

LITHOLOGY STRIP LOG

WellSight Systems

Scale 1:240 (5"=100') Imperial

Well Name: KGH MEAGHER # 11-11

Location: NW NW SEC 25, T1S, R104W 6TH PM, RIO BLANCO COUNTY, CO

Licence Number: API# 050-10769-00

Region: GILSONITE RIDGE

Spud Date: 07/10/2006

Drilling Completed: 07/16/06

Surface Coordinates: NESW , 2661' FSL ,2290' FWL, SECTION 11 - 1S - R104W

LAT. 39.974700 DEG N., LONG. 109.037247 DEG W.

Bottom Hole Coordinates: SAME

Ground Elevation (ft): 6029'

K.B. Elevation (ft): 6040'

Logged Interval (ft): 600' To: 5384' Total Depth (ft): 5384'

Formation: MESAVERDE, SEGO, BUCK TONGUE, CASTLEGATE, MANCOS

Type of Drilling Fluid: FRESH WATER, GEL/CHEM

Printed by WellSight Log Viewer from WellSight Systems 1-800-447-1534 www.WellSight.com

OPERATOR

Company: KGH OPERATING COMPANY

Address: PO BOX 2235

BILLINGS, MT 59103

GEOLOGIST

Name: DAN RODEN

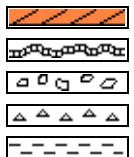
Company: WILDCAT EXPLORATION WELLOGGING CO.

Address: P.O. BOX 186

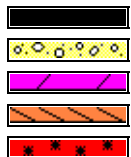
THERMOPOLIS, WYOMING

82443

ROCK TYPES



Anhy
Bent
Brec
Cht
Clyst



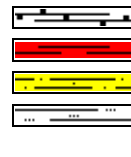
Coal
Congl
Dol
Gyp
Igne



Lmst
Meta
Mrlst
Salt
Shale



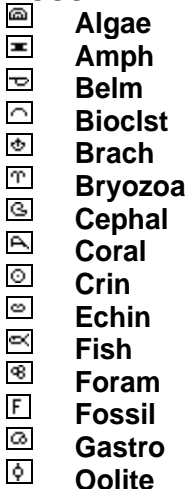
Shcol
Shgy
Sltst
Ss
Till



carb sh
red sh
shlyss
Sltly sh

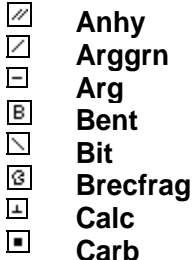
ACCESSORIES

FOSSIL



Ostra
Pelec
Pellet
Pisolite
Plant
Strom

MINERAL



Chtdk
Chtlt
Dol
Feldspar
Ferrpel
Ferr
Glau
Gyp
Hvymin
Kaol
Marl
Minxl
Nodule
Phos
Pyr
Salt

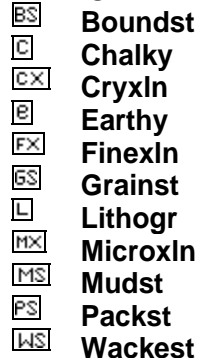


Sandy
Silt
Sil
Sulphur
Tuff

STRINGER

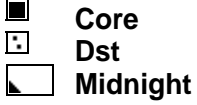


TEXTURE



OTHER SYMBOLS

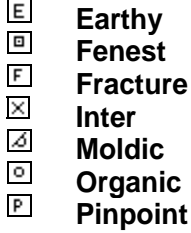
INTERVALS



EVENTS



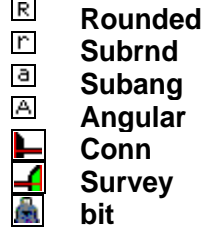
POROSITY TYPE



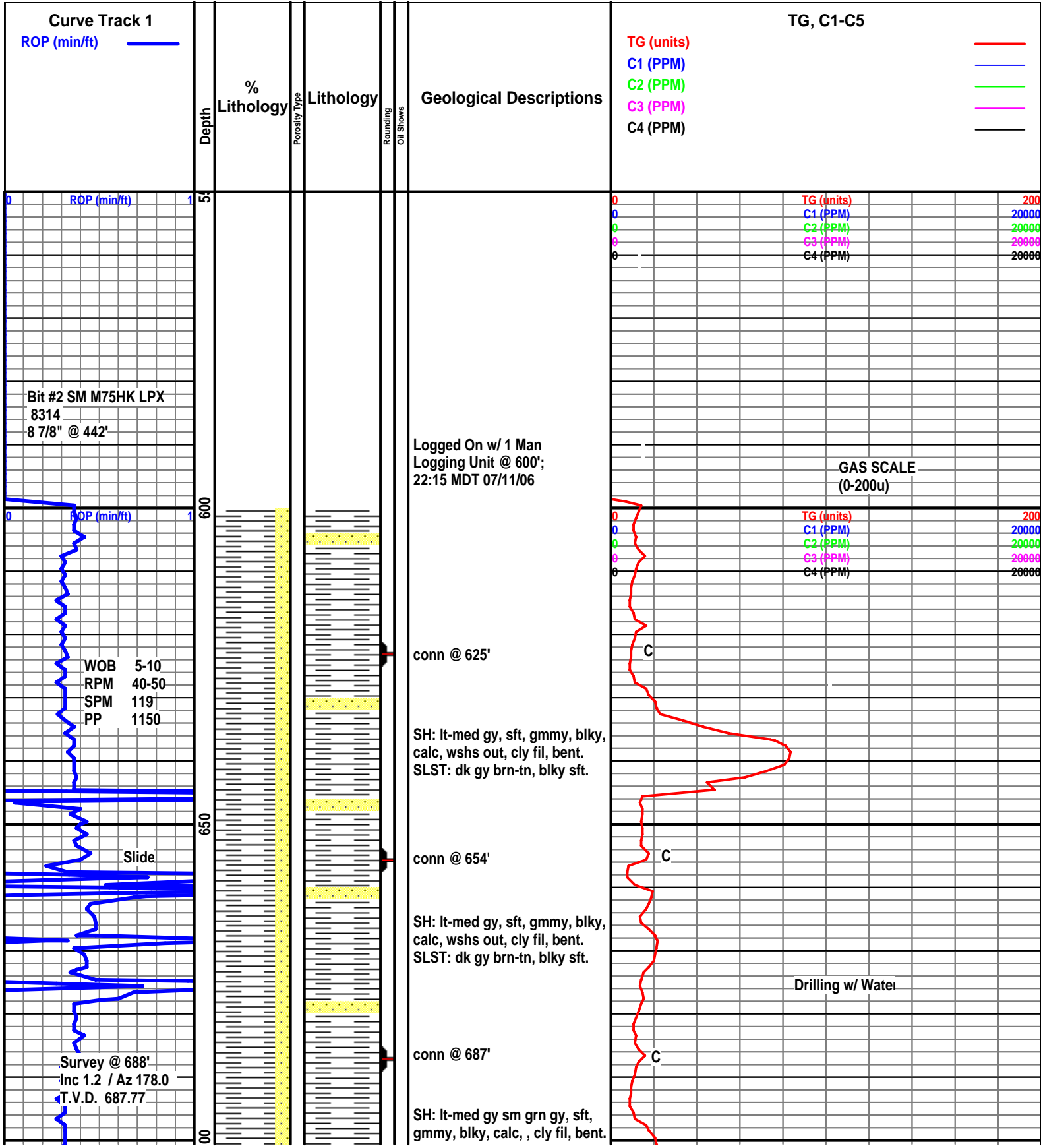
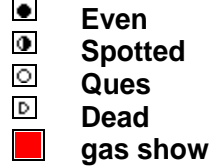
SORTING

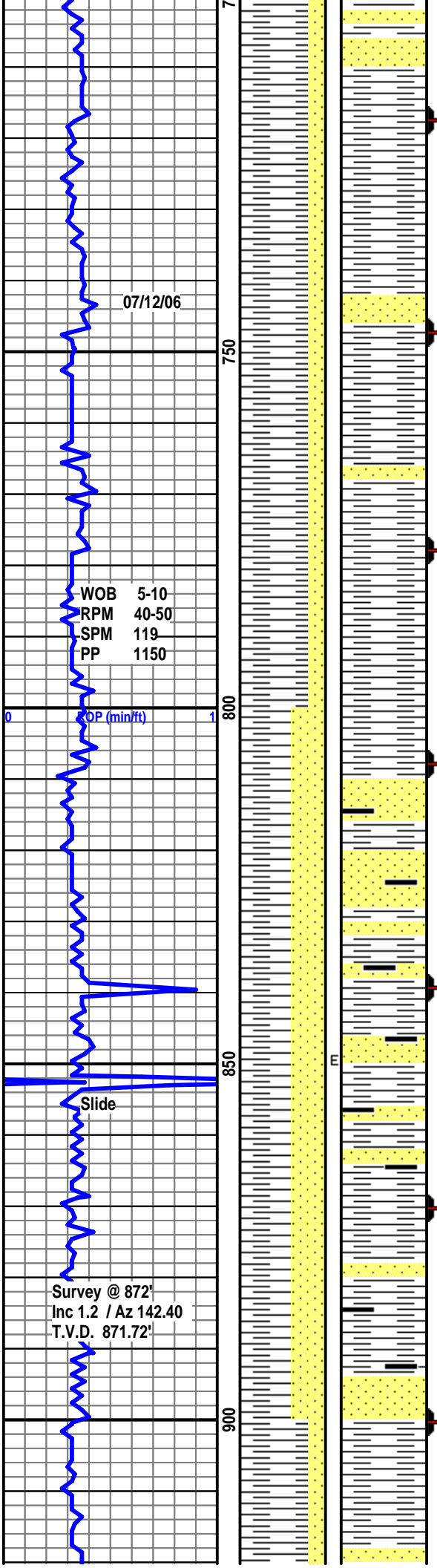


ROUNDING



OIL SHOWS





SLST: dk gy brn-tn, blk sft

conn @ 717'

SH: lt-med gy, sft, gmmy, blk, calc, wshs out, cly fil, bent.
SLST: dk gy brn-tn, blk sft.

conn @ 748'

SH: lt-med gy, sft, gmmy, blk, calc, wshs out, cly fil, bent.
SLST: dk gy brn-tn, blk sft.

conn @ 778'

SH: lt-med gy, sft, gmmy, blk, calc, wshs out, cly fil, bent.
SLST: dk gy brn-tn, blk sft.

conn @ 809'

SS: wh-clr-frst, vf-f gr, sbang-sbrnd, w cmt, s/p, w/ dk incl, v calc. Tr min fluor, NSOC. Tr Coal: strngrs, blk, vit

conn @ 840'

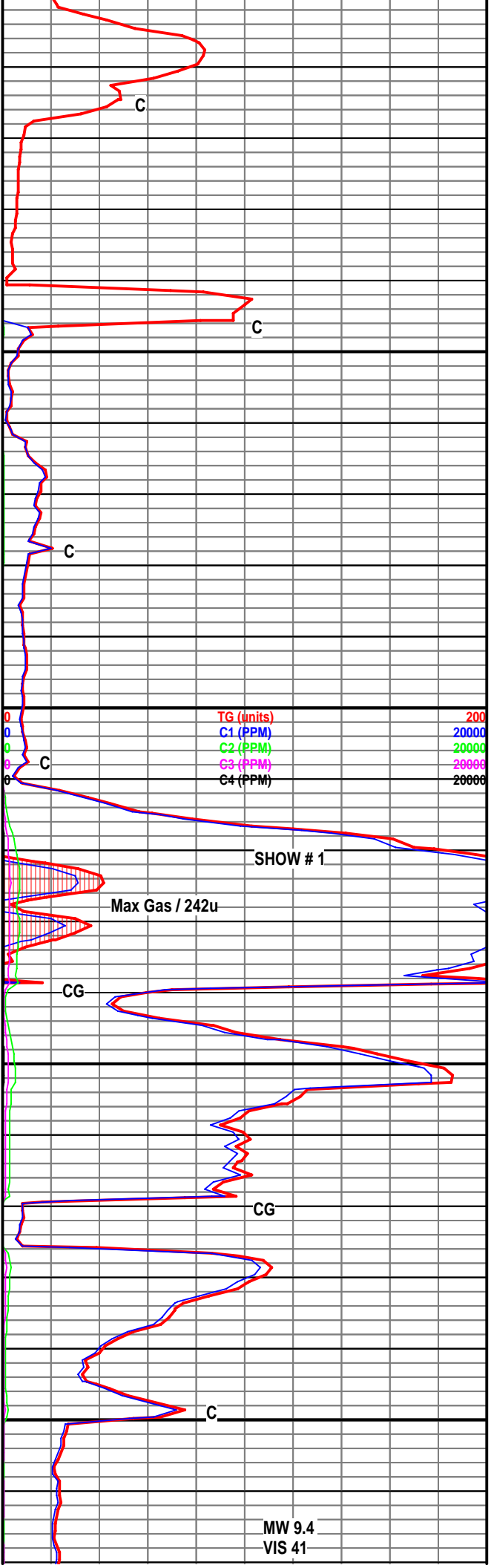
SS: wh-clr-frst, vf-f gr, sbang-sbrnd, w cmt, s/p, w/ dk incl, v calc. Tr min fluor, NSOC. Tr Coal: strngrs, blk, vit

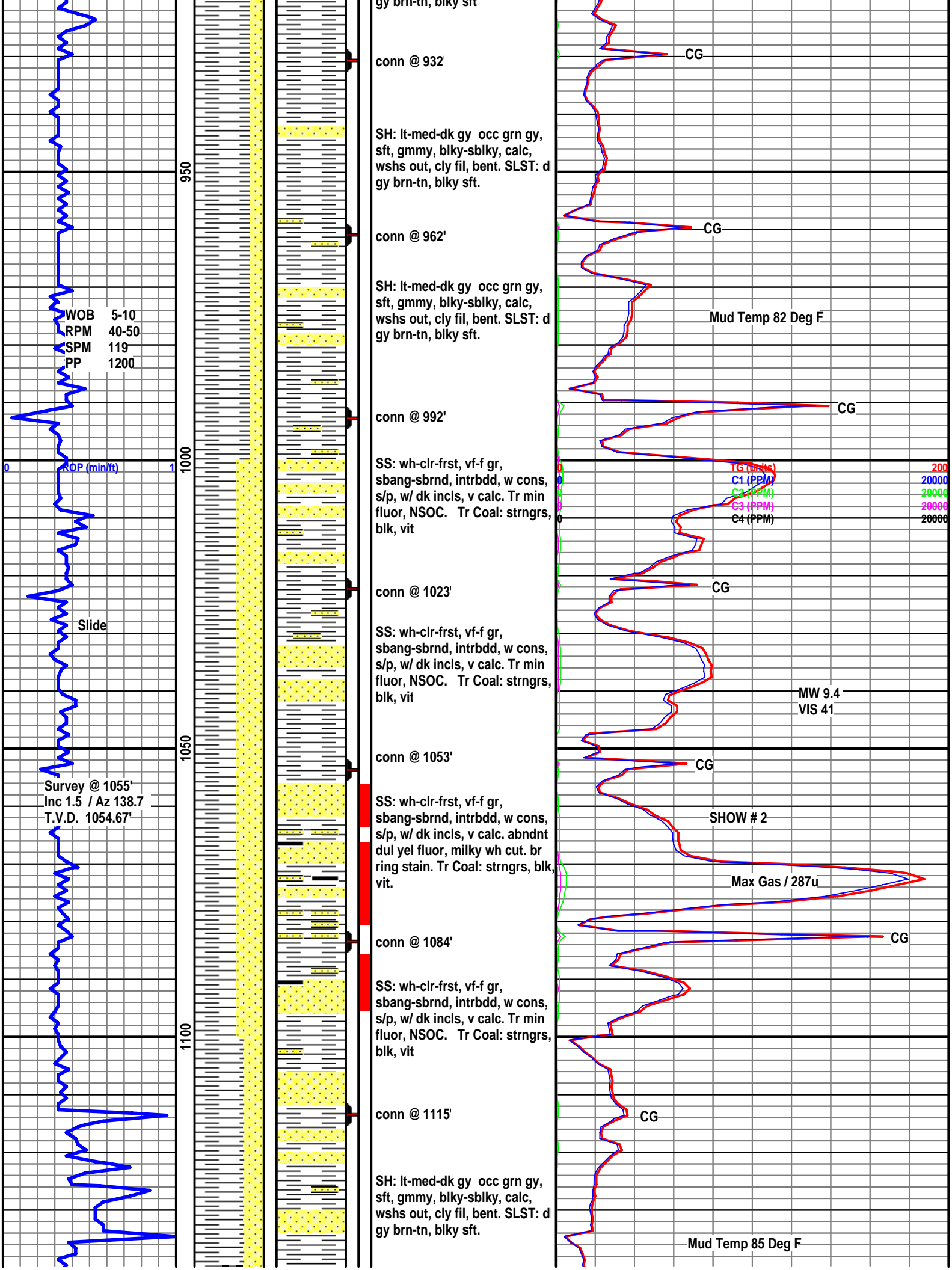
conn @ 870'

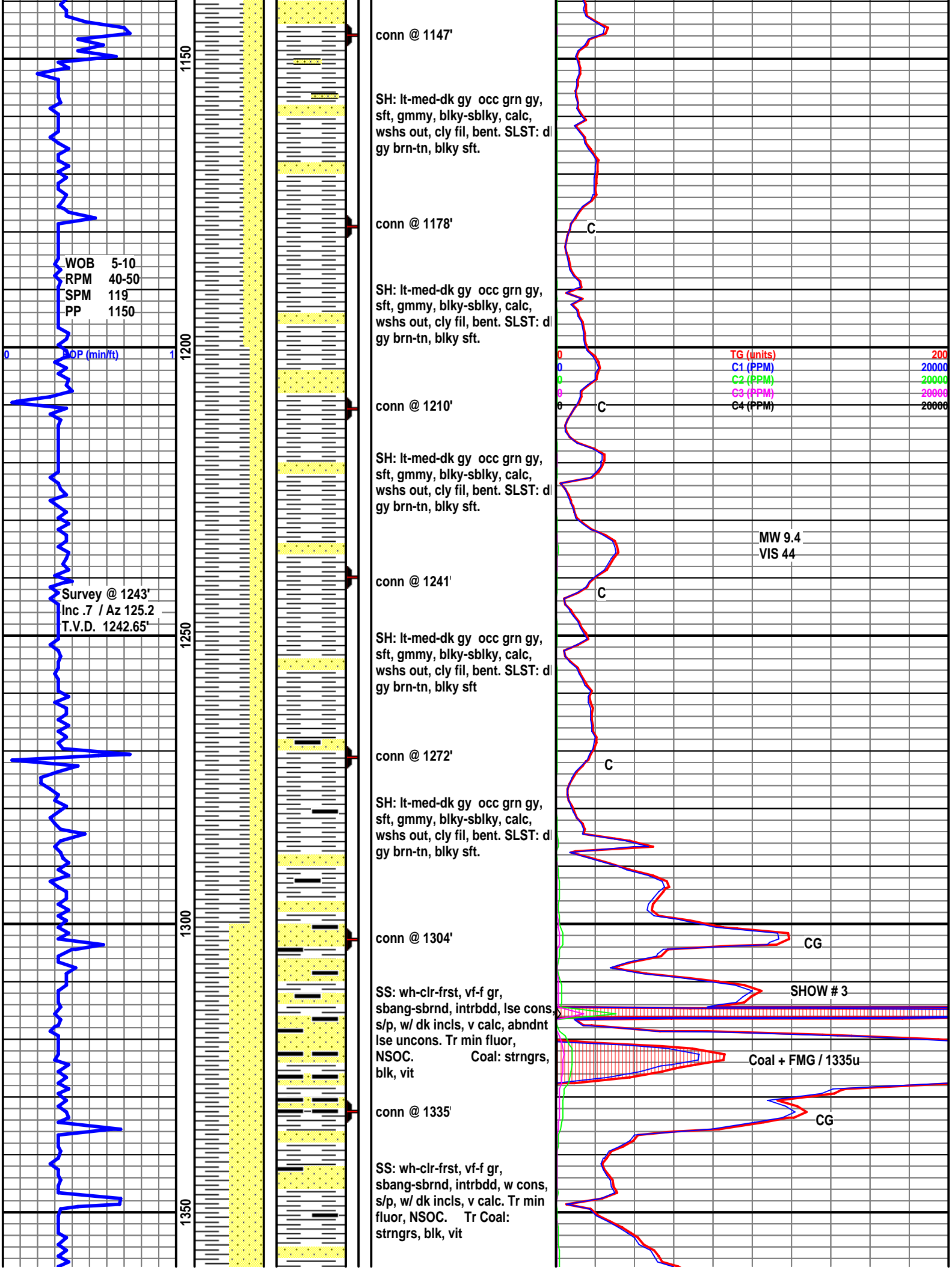
SS: wh-clr-frst, vf-f gr, sbang-sbrnd, w cmt, s/p, w/ dk incl, v calc. Tr min fluor, NSOC. Tr Coal: strngrs, blk, vit

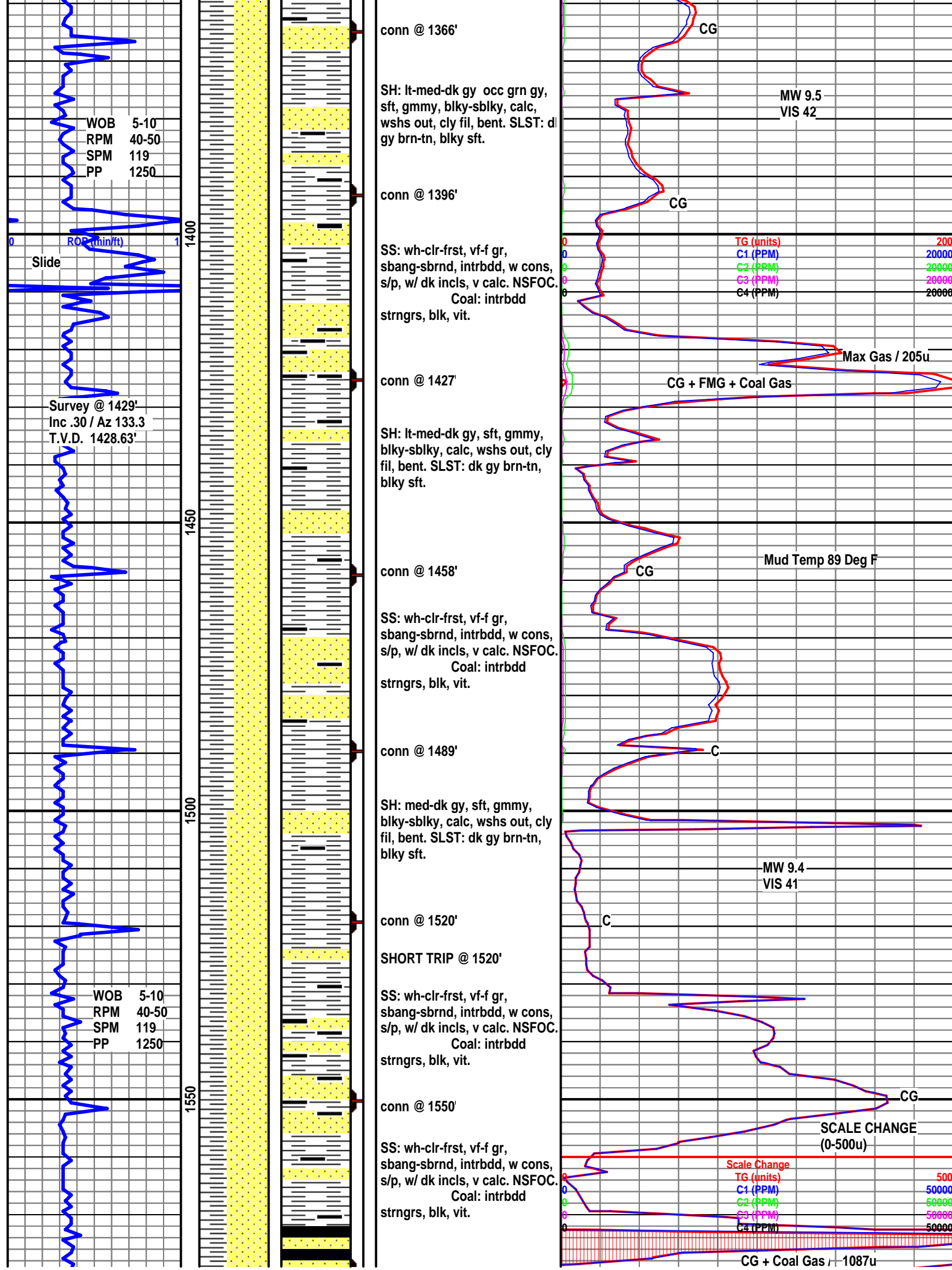
conn @ 901'

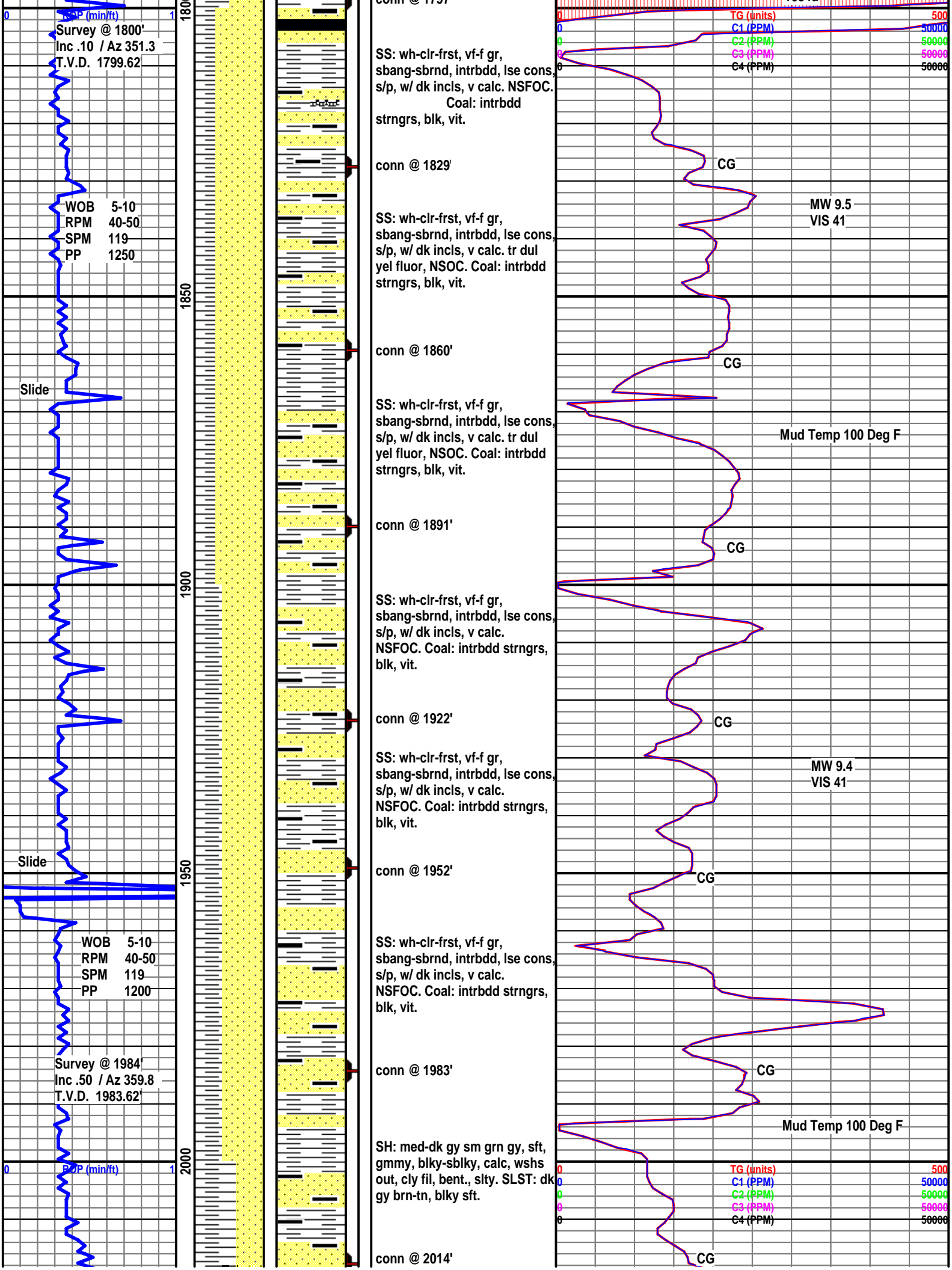
SH: lt-med-dk gy occ grn gy, sft, gmmy, blk-sblk, calc, wshs out, cly fil, bent. SLST: dk gy brn-tn, blk sft.

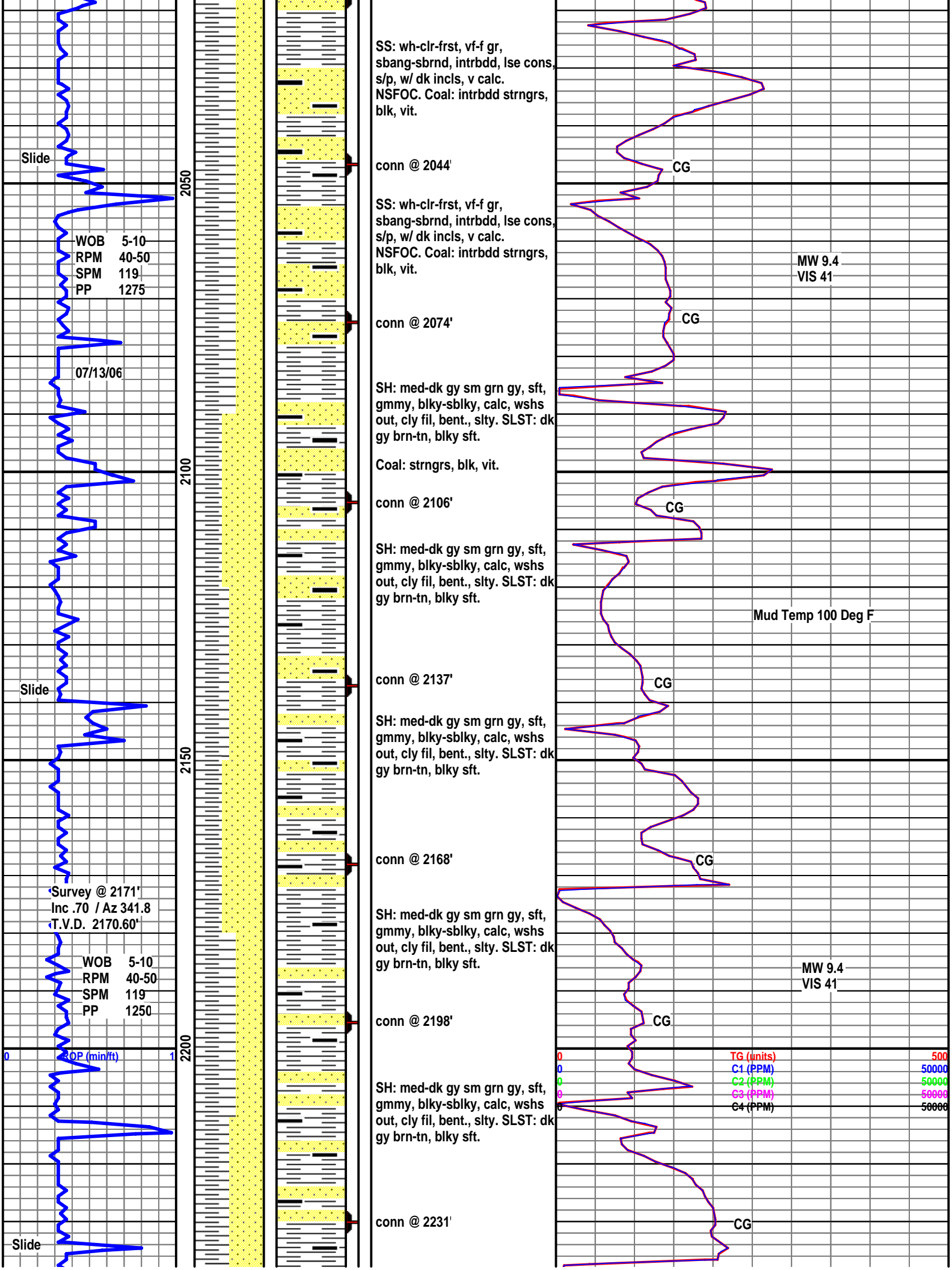


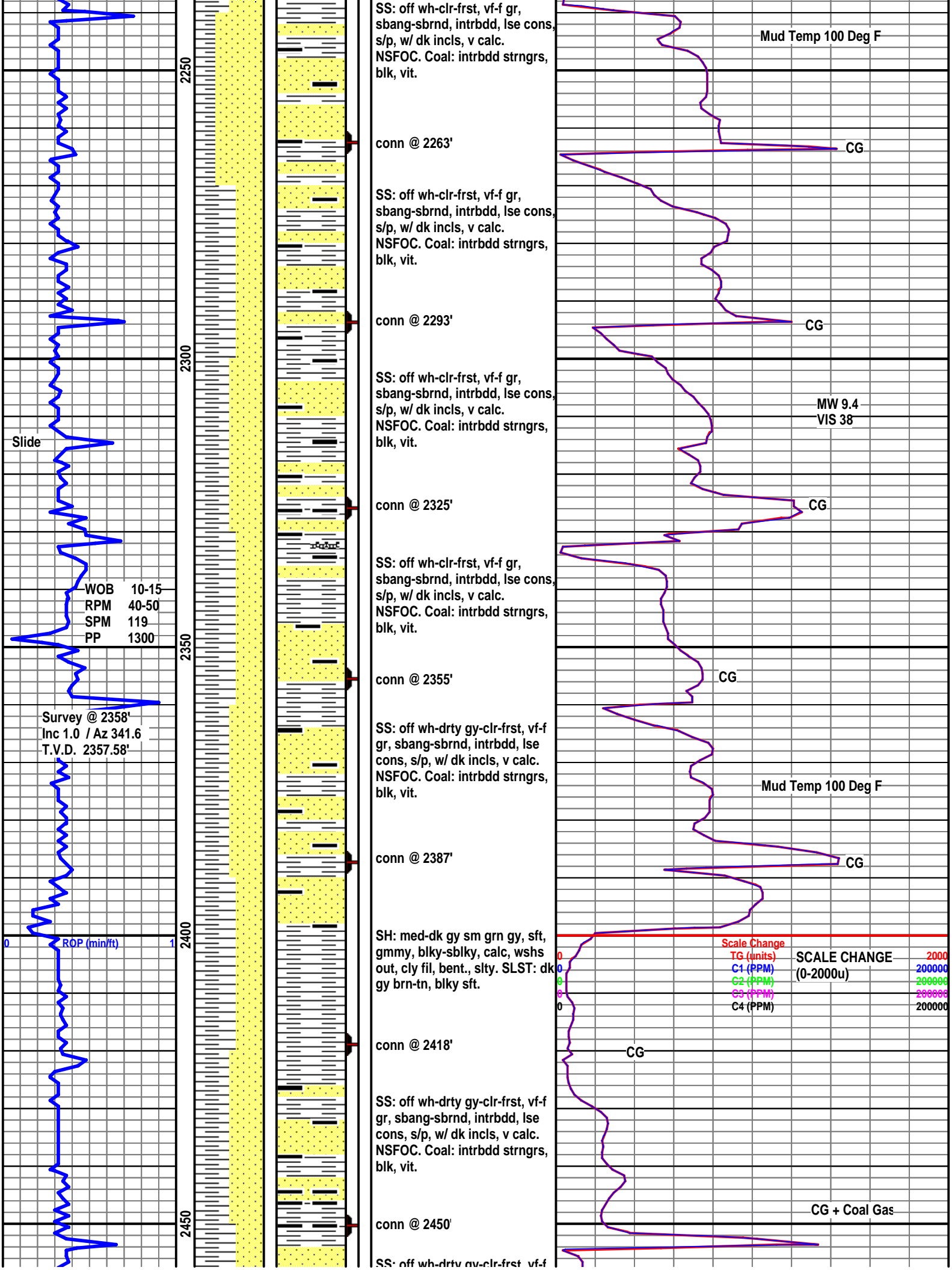


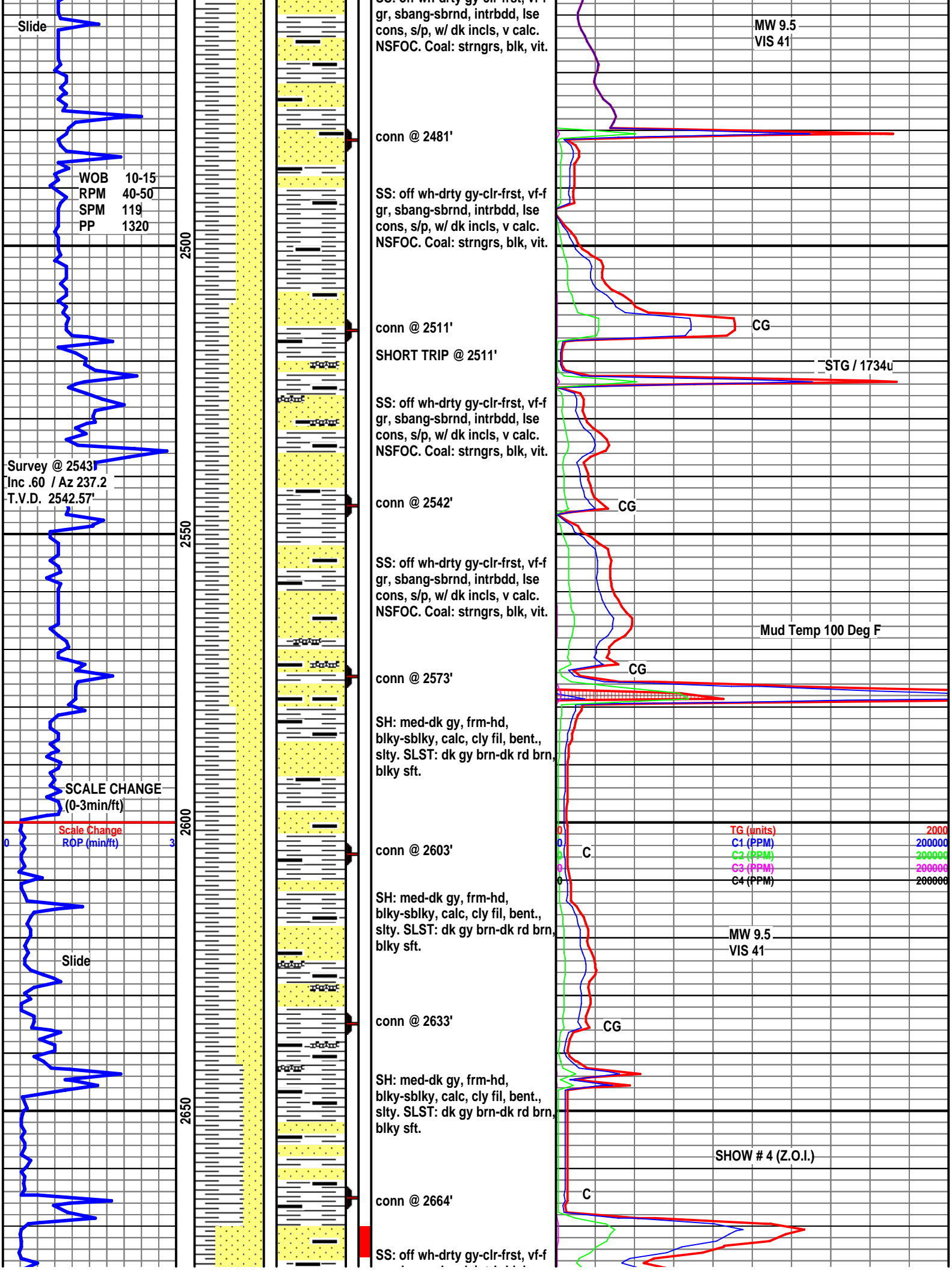












Slide

WOB 10-15
RPM 40-50
SPM 119
PP 1320

Survey @ 2543'
Inc .60 / Az 237.2
T.V.D. 2542.57'

SCALE CHANGE
(0-3min/ft)

Scale Change
ROP (min/ft)

Slide

conn @ 2481'

SS: off wh-dirty gy-clr-frst, vf-f
gr, sbang-sbrnd, intrbdd, lse
cons, s/p, w/ dk inclcs, v calc.
NSFOC. Coal: strngrs, blk, vit.

conn @ 2511'

SHORT TRIP @ 2511'

SS: off wh-dirty gy-clr-frst, vf-f
gr, sbang-sbrnd, intrbdd, lse
cons, s/p, w/ dk inclcs, v calc.
NSFOC. Coal: strngrs, blk, vit.

conn @ 2542'

SS: off wh-dirty gy-clr-frst, vf-f
gr, sbang-sbrnd, intrbdd, lse
cons, s/p, w/ dk inclcs, v calc.
NSFOC. Coal: strngrs, blk, vit.

conn @ 2573'

SH: med-dk gy, frm-hd,
blk-y-sblky, calc, cly fil, bent.,
slty. SLST: dk gy brn-dk rd brn,
blk-y sft.

conn @ 2603'

SH: med-dk gy, frm-hd,
blk-y-sblky, calc, cly fil, bent.,
slty. SLST: dk gy brn-dk rd brn,
blk-y sft.

conn @ 2633'

SH: med-dk gy, frm-hd,
blk-y-sblky, calc, cly fil, bent.,
slty. SLST: dk gy brn-dk rd brn,
blk-y sft.

conn @ 2664'

SS: off wh-dirty gy-clr-frst, vf-f

MW 9.5
VIS 41

CG

STG / 1734u

CG

Mud Temp 100 Deg F

CG

TG (units) 2000
C1 (PPM) 200000
C2 (PPM) 200000
C3 (PPM) 200000
C4 (PPM) 200000

MW 9.5
VIS 41

CG

SHOW # 4 (Z.O.I.)

C

CG.

