



**SUPERIOR**  
Black Lick, Pa.  
Mercer, Pa.  
Wooster, Oh.  
Cleveland, Ok.  
Trinidad, Co.

## DUAL INDUCTION LOG

Company XTO Energy Inc.  
Well Golden Eagle 32-04  
Field Purgatoire River  
County Las Animas State Colorado

Location: API # : 05 071 09140 00

487' FNL & 74' FWL

SEC 32 TWP 33S RGE 67W

Permanent Datum Ground Level Elevation 7501'  
Log Measured From Ground Level  
Drilling Measured From Ground Level

Other Services  
CDL  
NEUTRON  
Elevation  
K.B. -----  
D.F. -----  
G.L. 7501'

Date	7-24-07		
Run Number	One		
Depth Driller	2155'		
Depth Logger	2148'		
Bottom Logged Interval	2146'		
Top Log Interval	Surface Casing		
Casing Driller	8 5/8" @ 498'		
Casing Logger	496'		
Bit Size	7 7/8"		
Type Fluid in Hole	Water		
Density / Viscosity	///		
pH / Fluid Loss	///		
Source of Sample	///		
Rm @ Meas. Temp	///		
Rmf @ Meas. Temp	///		
Rmc @ Meas. Temp	///		
Source of Rmf / Rmc	///		
Rm @ BHT	///		
Time Circulation Stopped	8:30 A.M.		
Time Logger on Bottom	11:00 A.M.		
Maximum Recorded Temperature	102 DEG F		
Equipment Number	T697		
Location	Trinidad		
Recorded By	M. Norton		
Witnessed By	Mr. Don Johnson		

<<< Fold Here >>>

All interpretations are opinions based on inferences from electrical or other measurements and we cannot and do not guarantee the accuracy or correctness of any interpretation, and we shall not, except in the case of gross or willful negligence on our part, be liable or responsible for any loss, costs, damages, or expenses incurred or sustained by anyone resulting from any interpretation made by any of our officers, agents or employees. These interpretations are also subject to our general terms and conditions set out in our current Price Schedule.

### Comments

Well Directions:  
Second Bosque entrance four miles after Weston, first left, first right,  
at Y stay right, end on location.

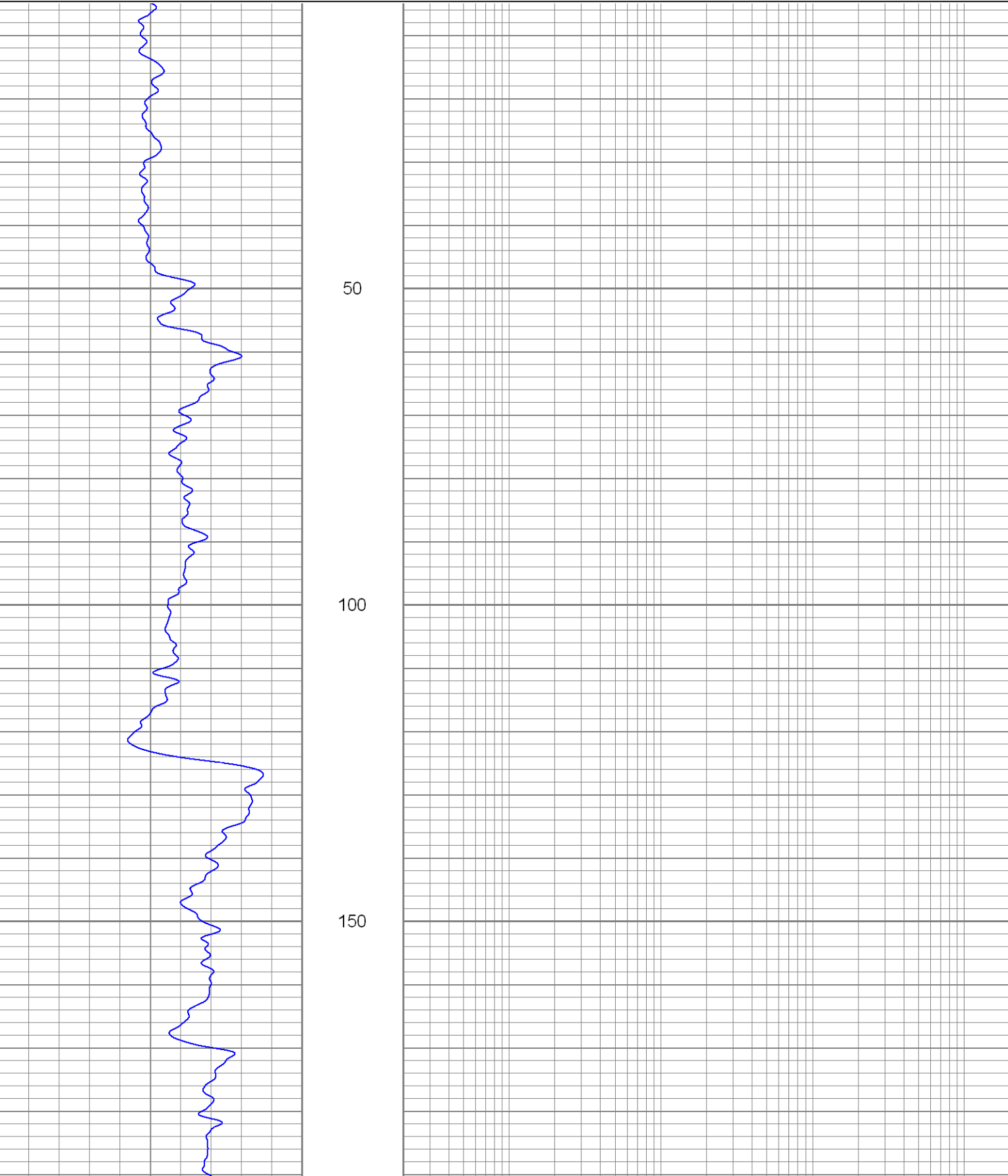


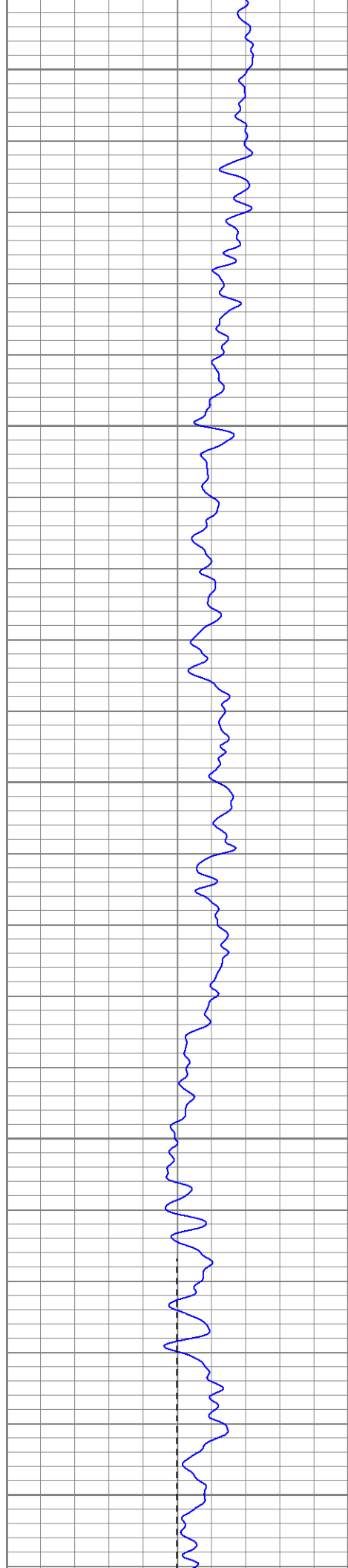
**SUPERIOR**  
Black Lick, Pa.  
Mercer, Pa.  
Wooster, Oh.  
Cleveland, Ok.  
Trinidad, Co.

# Main Pass

Database File: xtoge3204.db  
Dataset Pathname: pass2.1  
Presentation Format: dil  
Dataset Creation: Tue Jul 24 12:22:44 2007 by Calc Open-Cased 061129  
Charted by: Depth in Feet scaled 1:240

0	GR (GAPI)	200	0.2	RILM (Ohm-m)	2000
-100	SP (mV)	100	0.2	RILD (Ohm-m)	2000
			0.2	RLL3 (Ohm-m)	2000





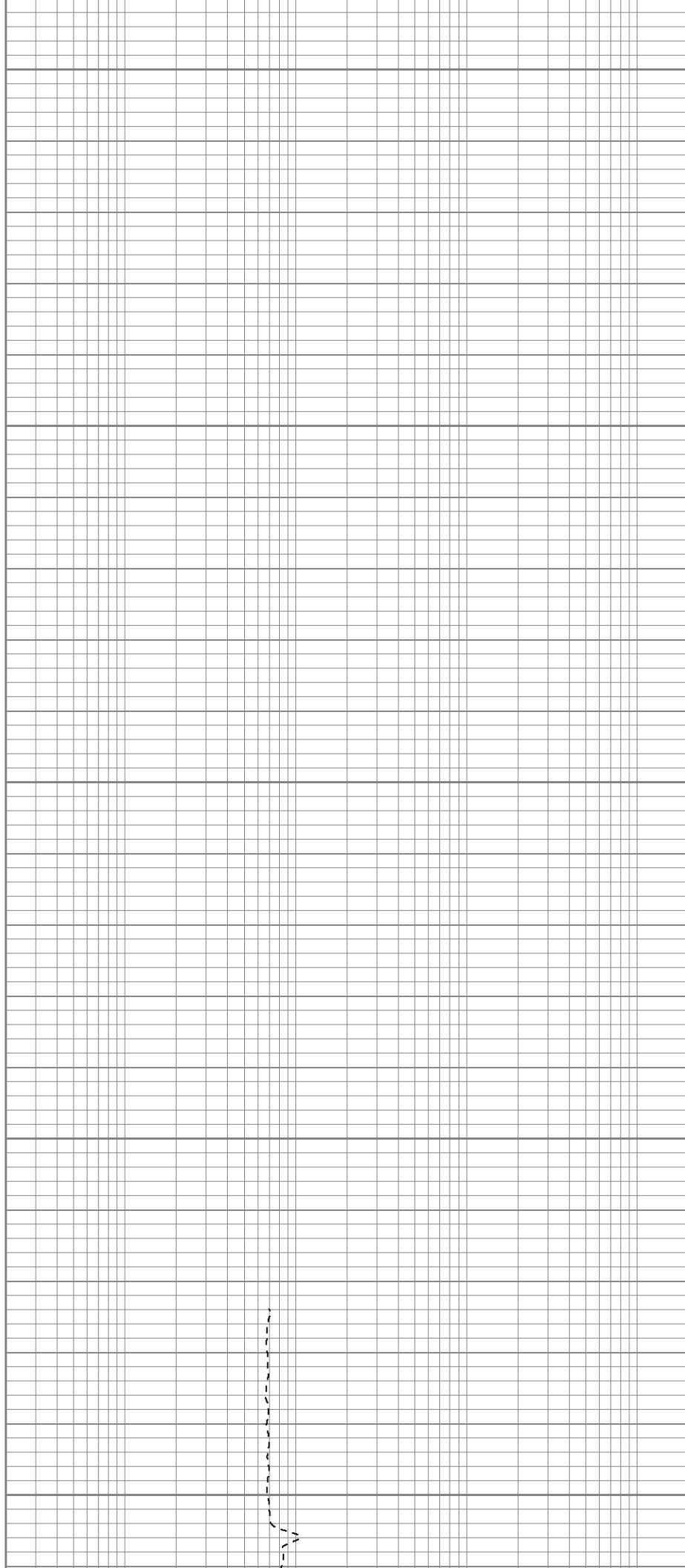
200

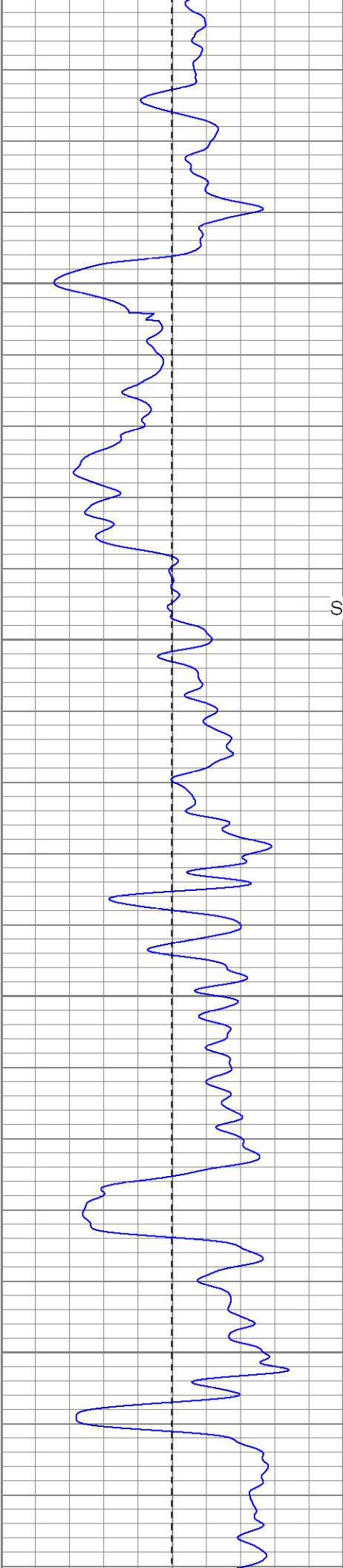
250

300

350

400





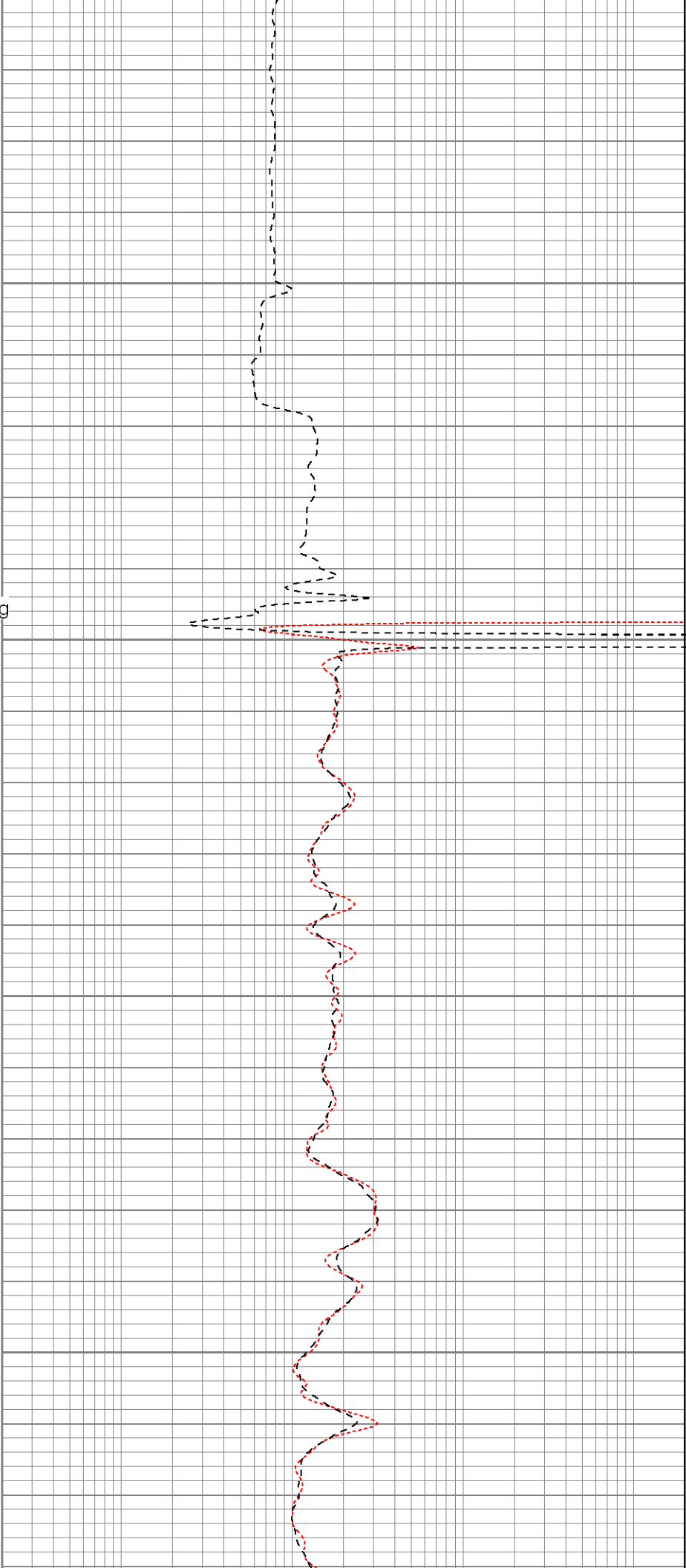
450

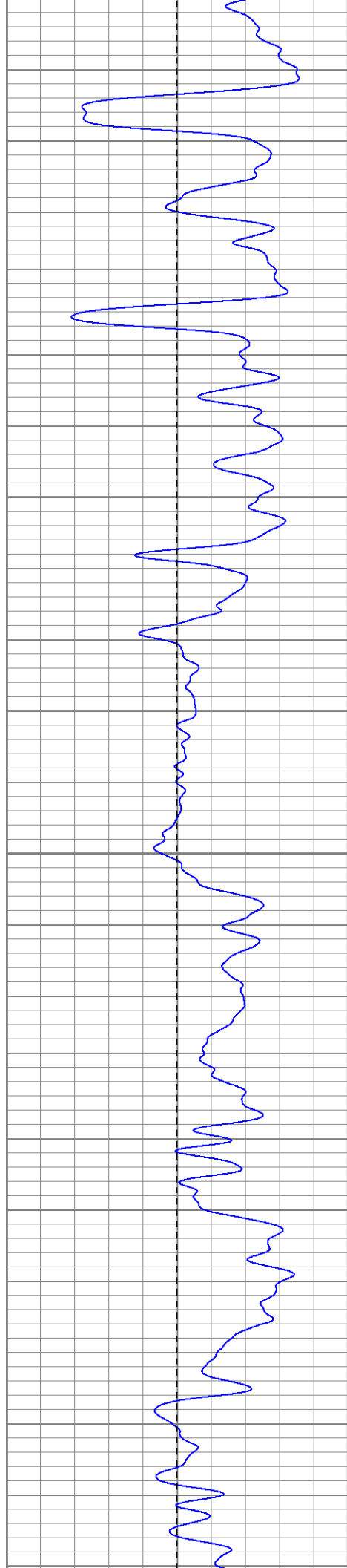
Surface Casing

500

550

600





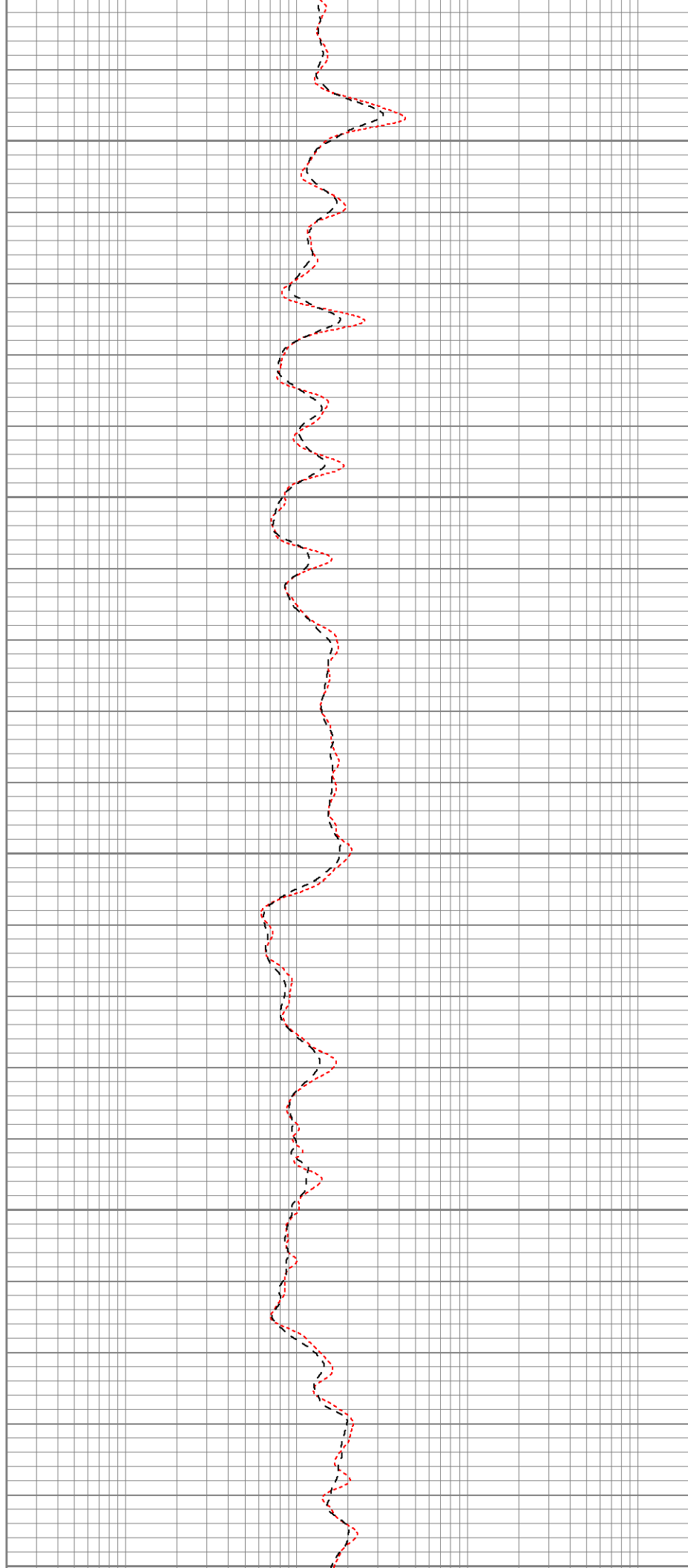
650

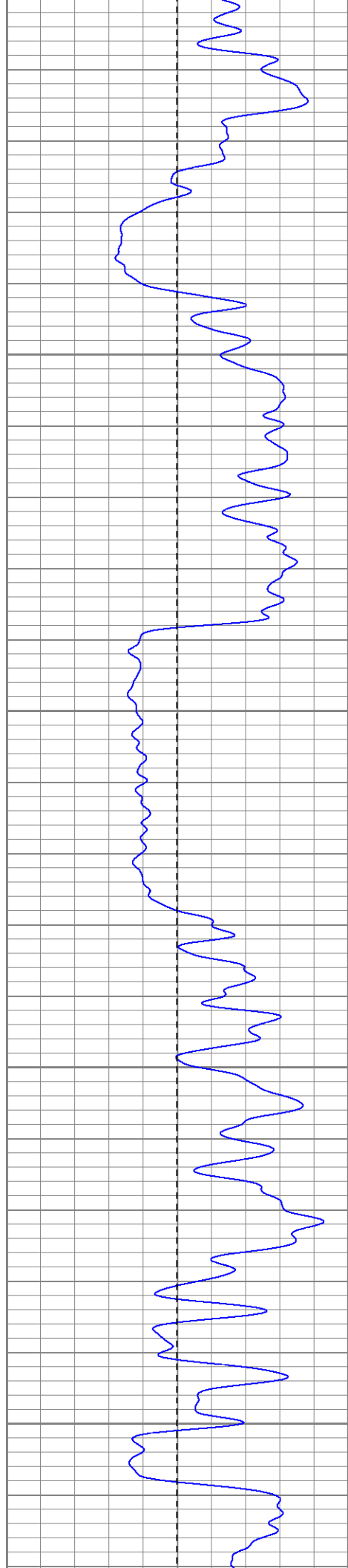
700

750

800

850





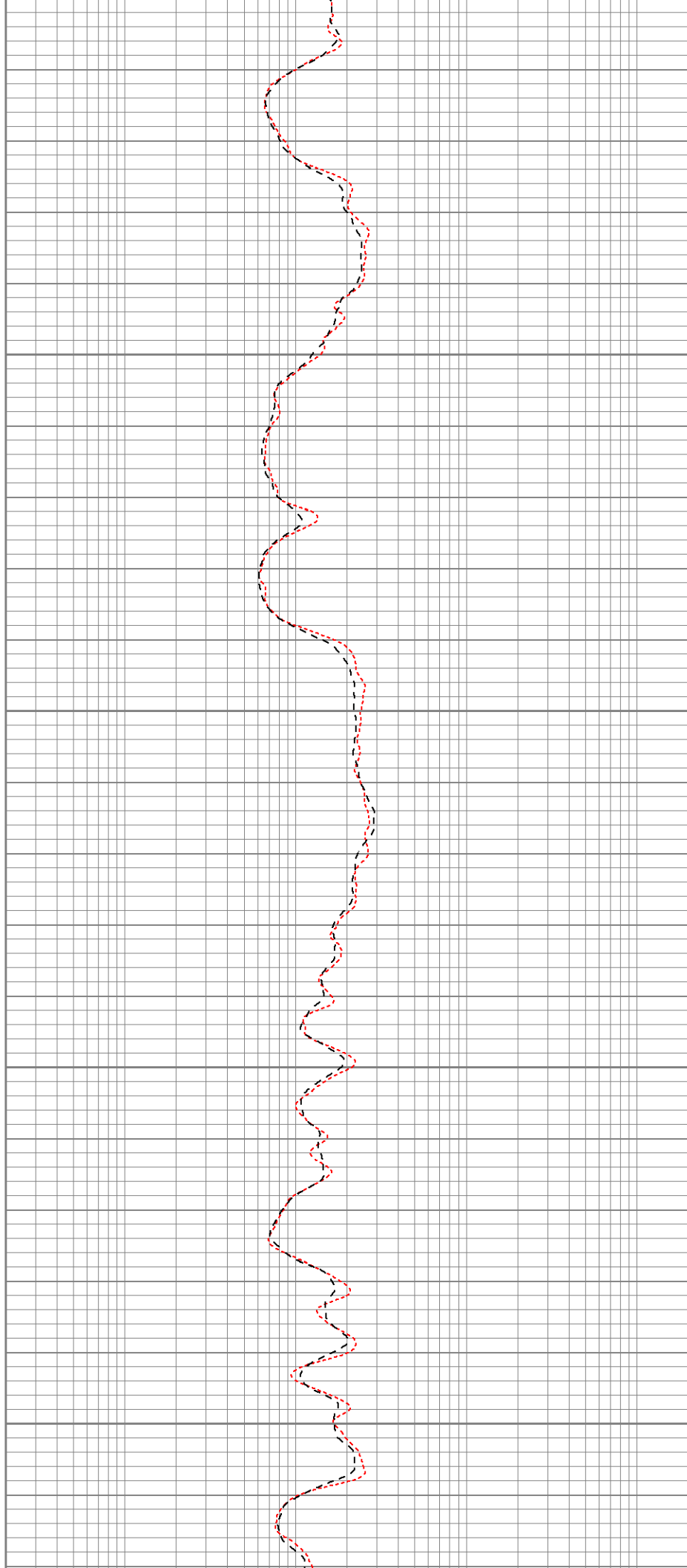
850

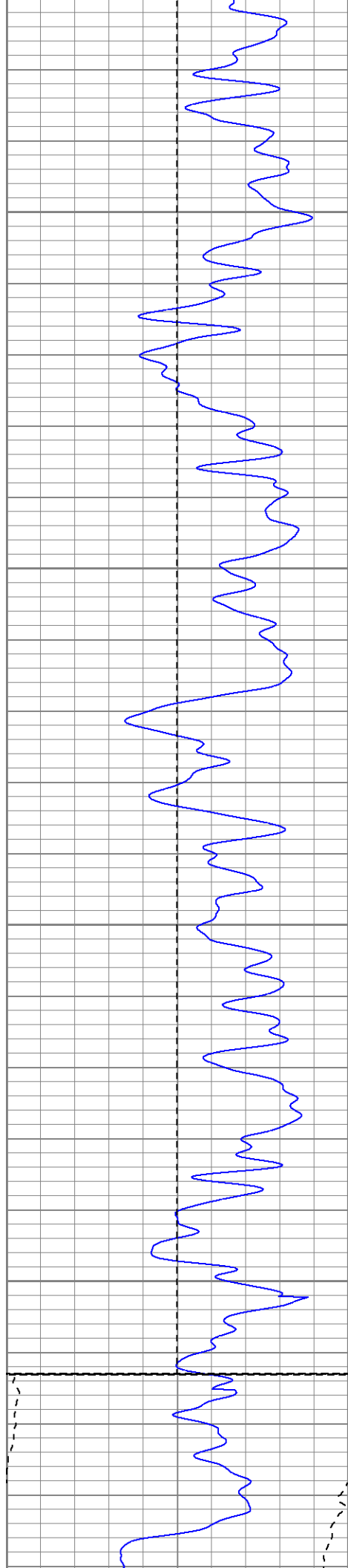
900

950

1000

1050





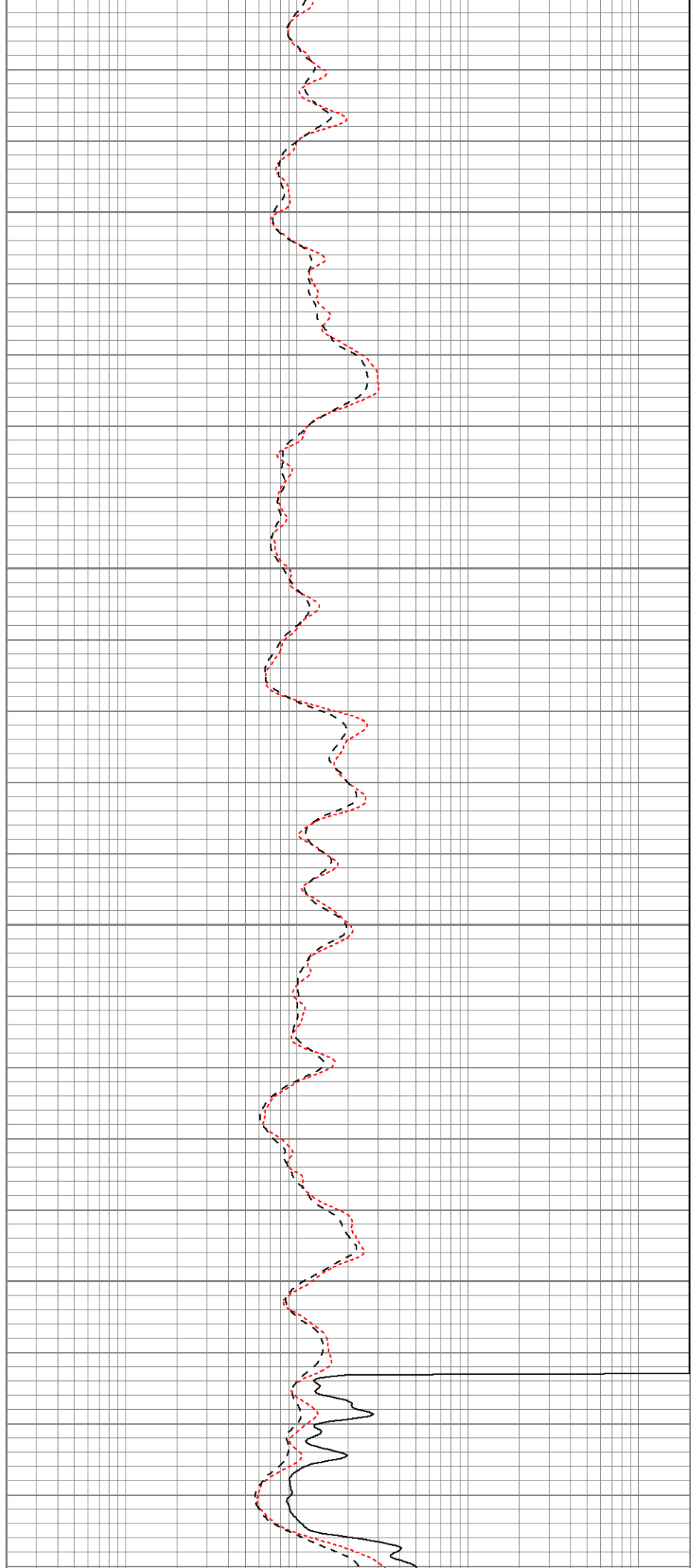
1100

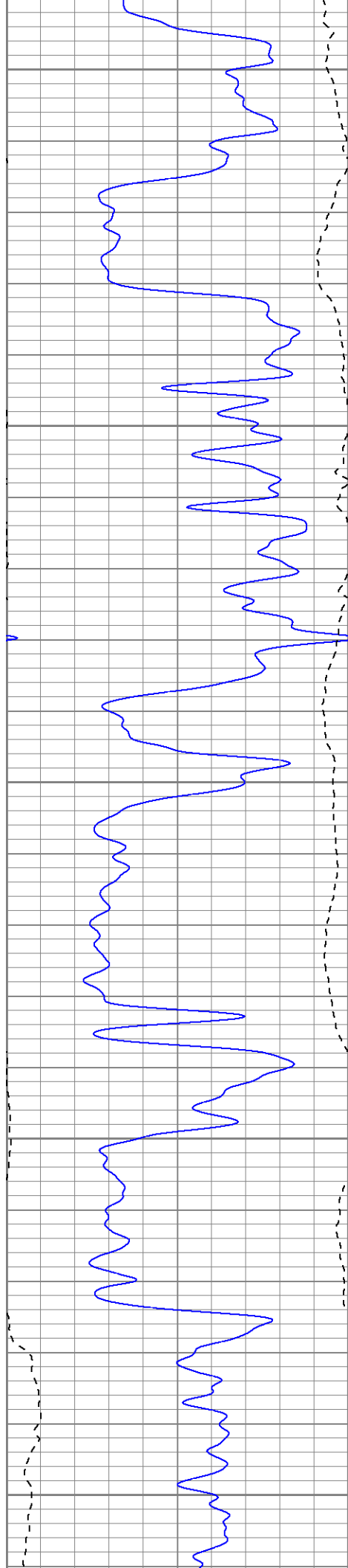
1150

1200

1250

Fluid Level





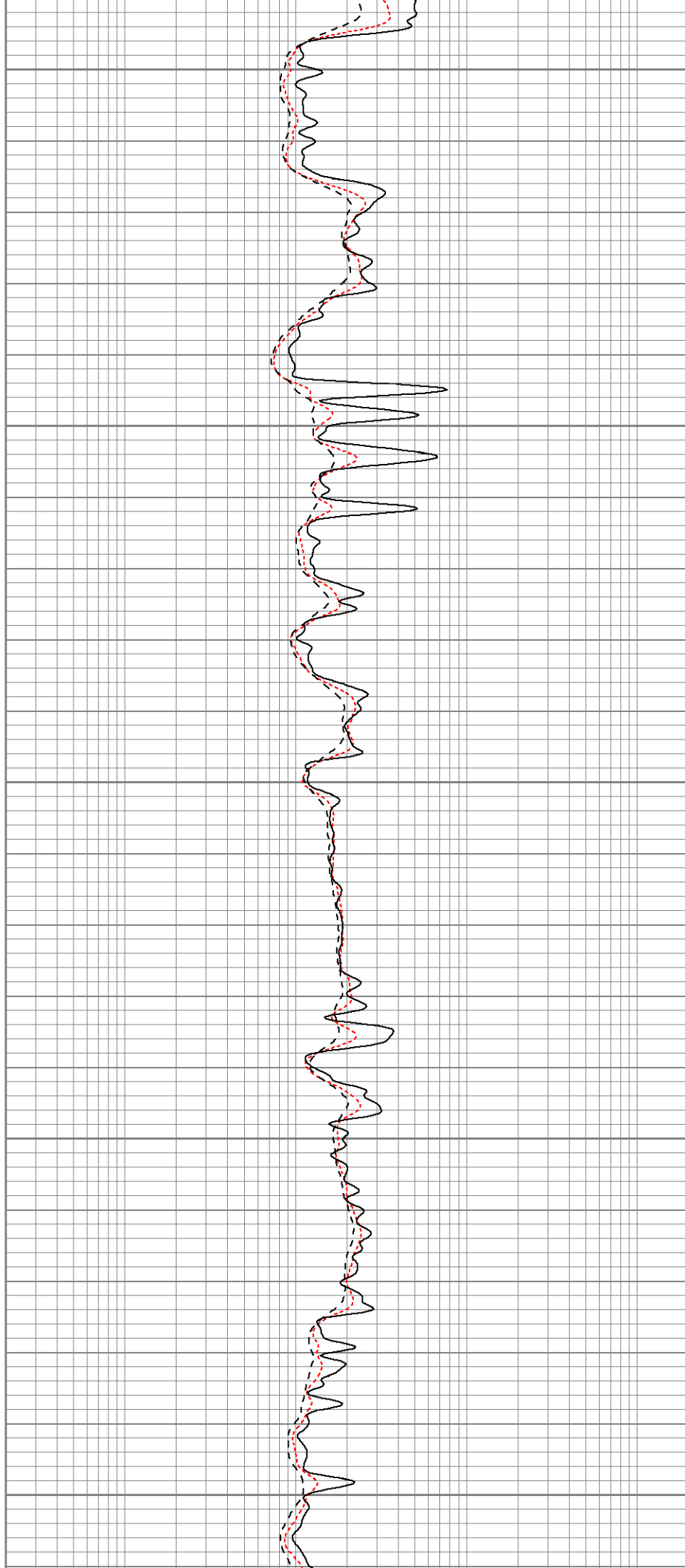
1300

1350

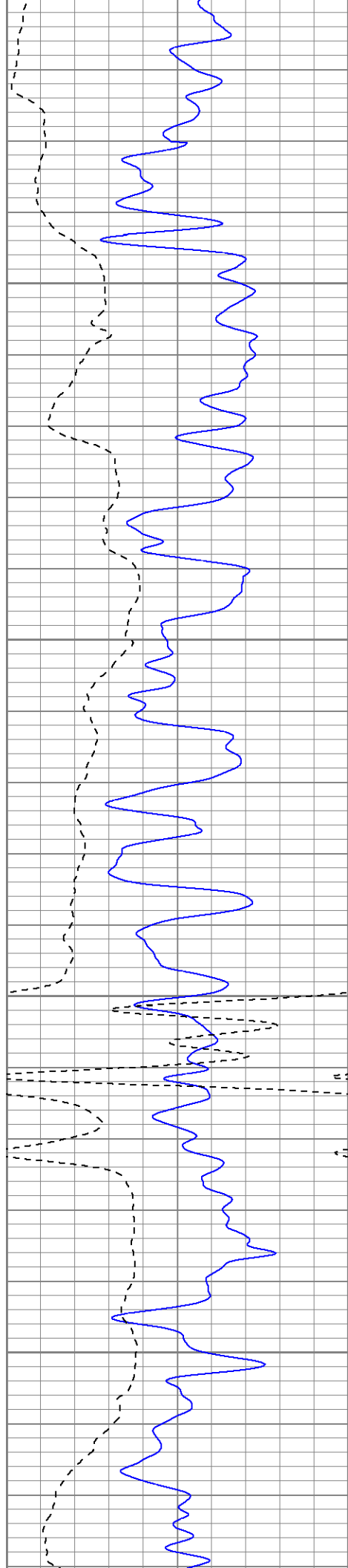
1400

1450

1500





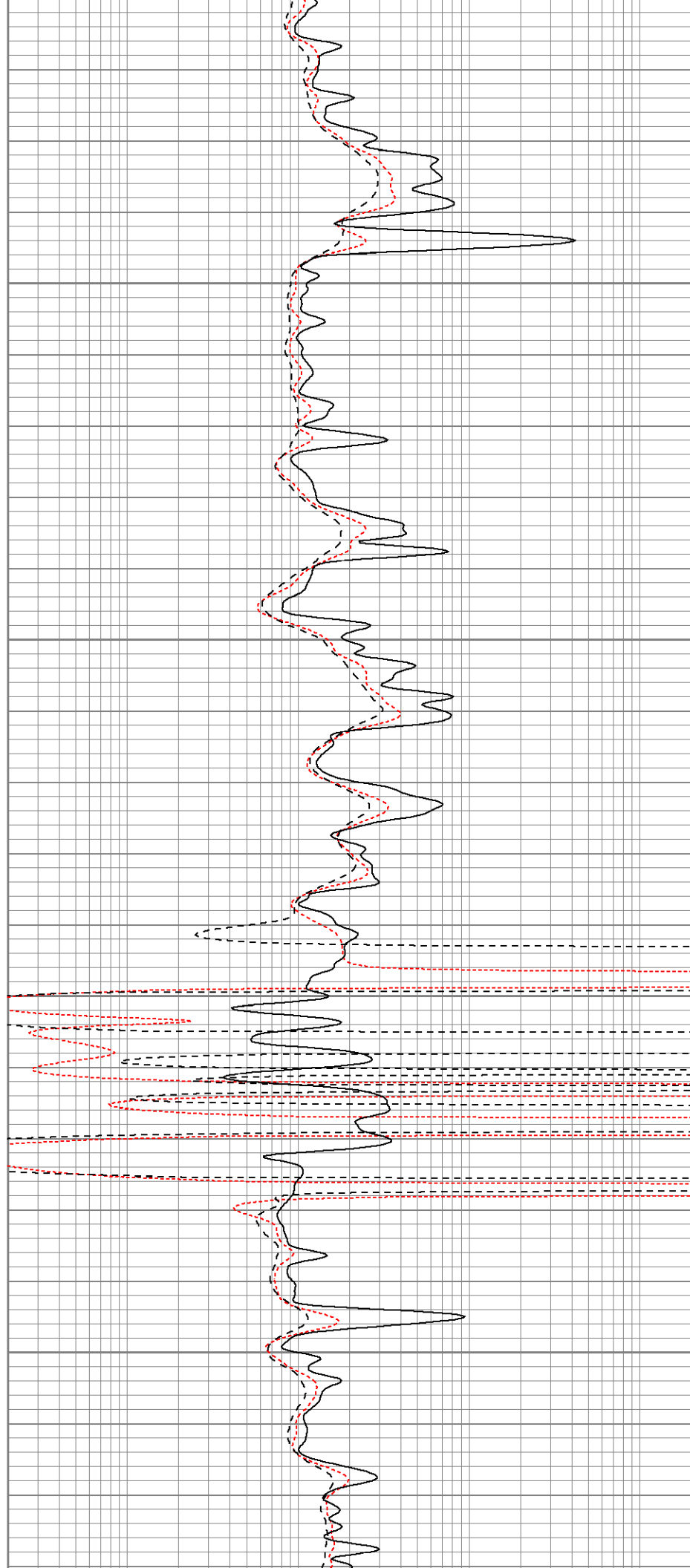


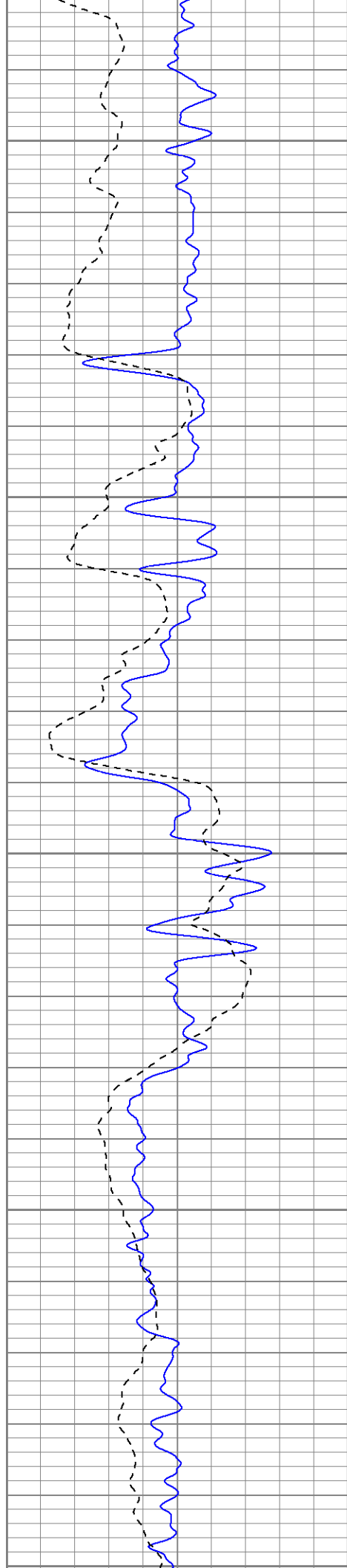
1550

1600

1650

1700





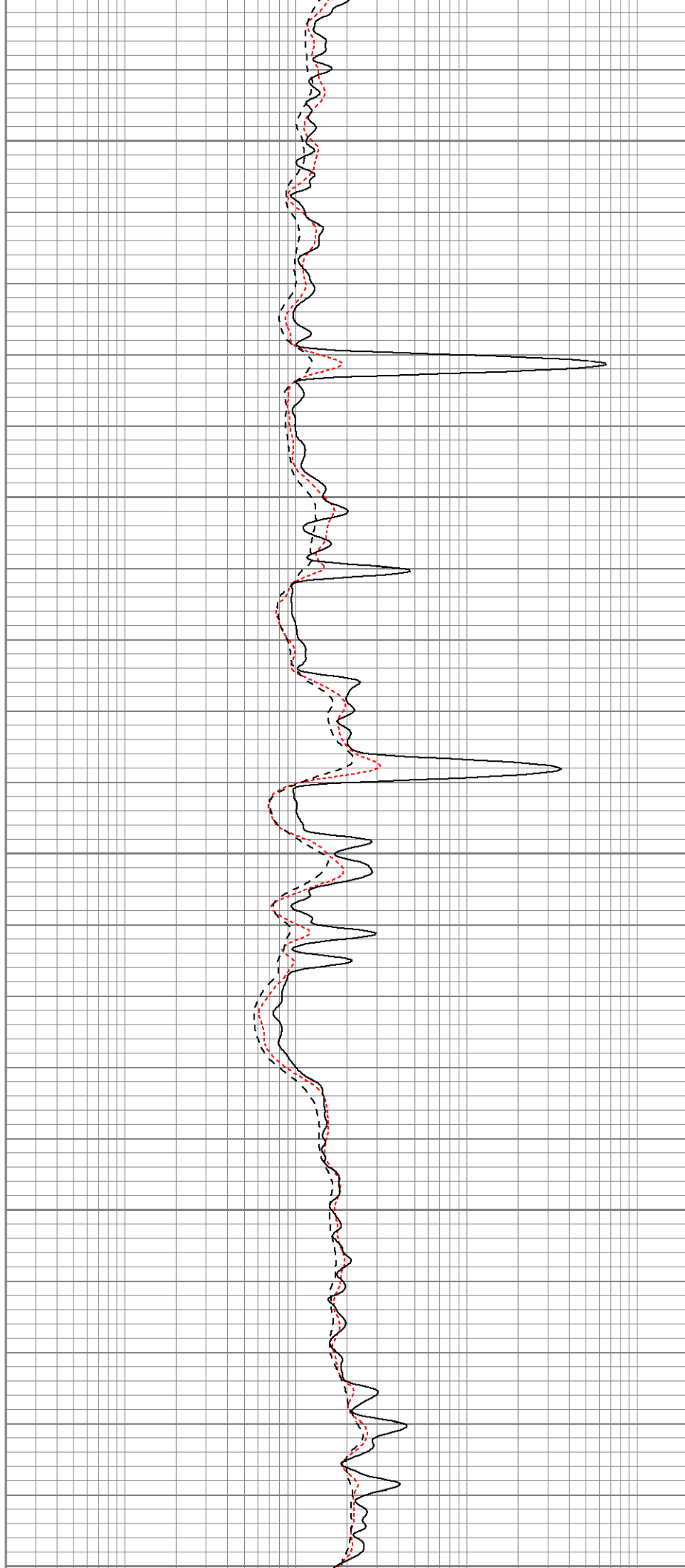
1750

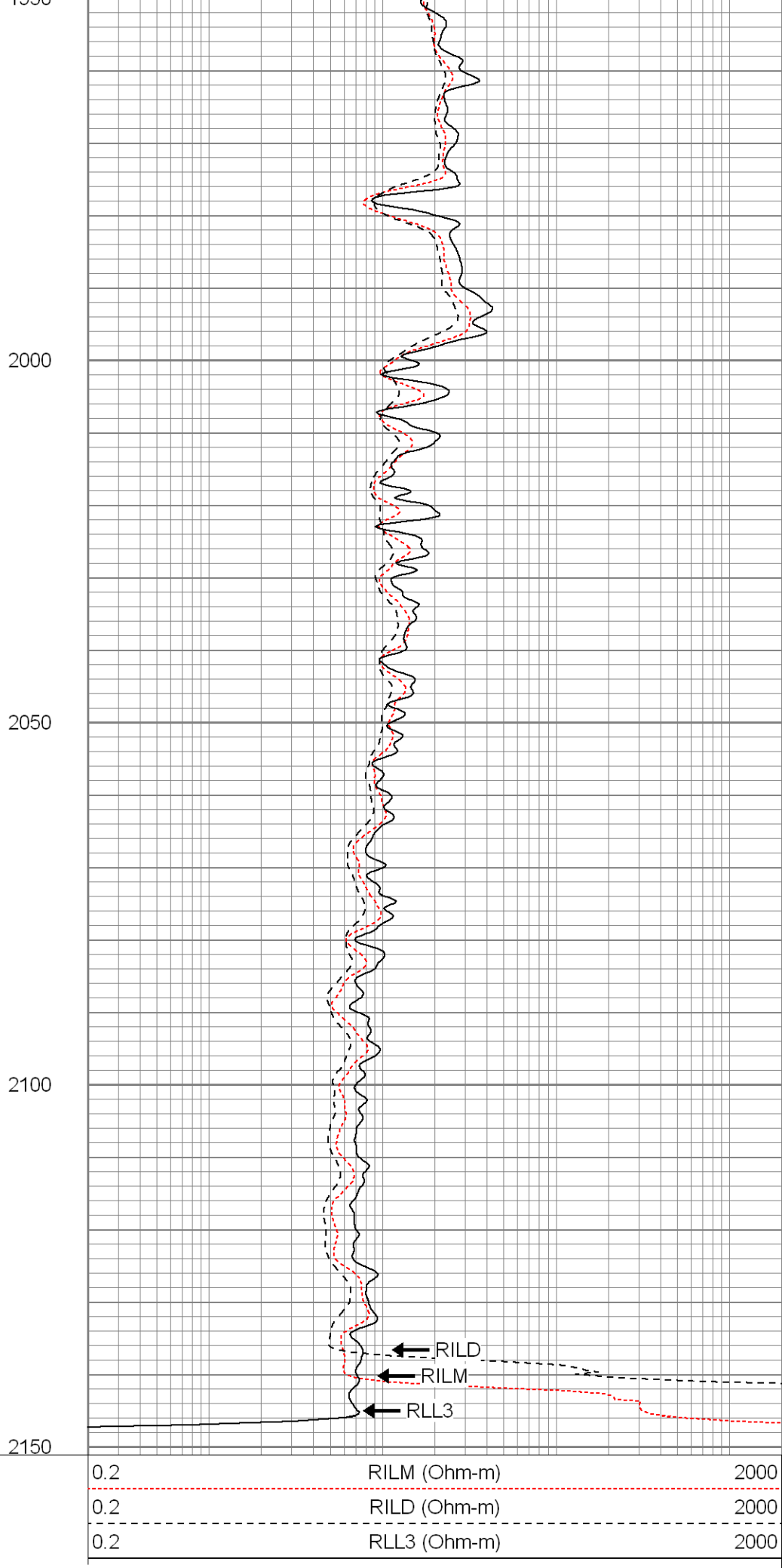
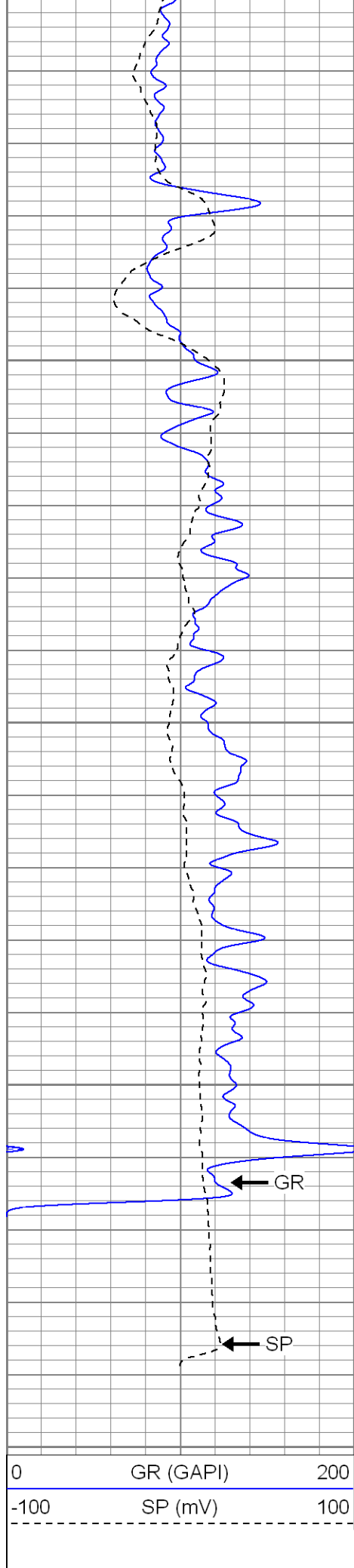
1800

1850

1900

1950







SUPERIOR

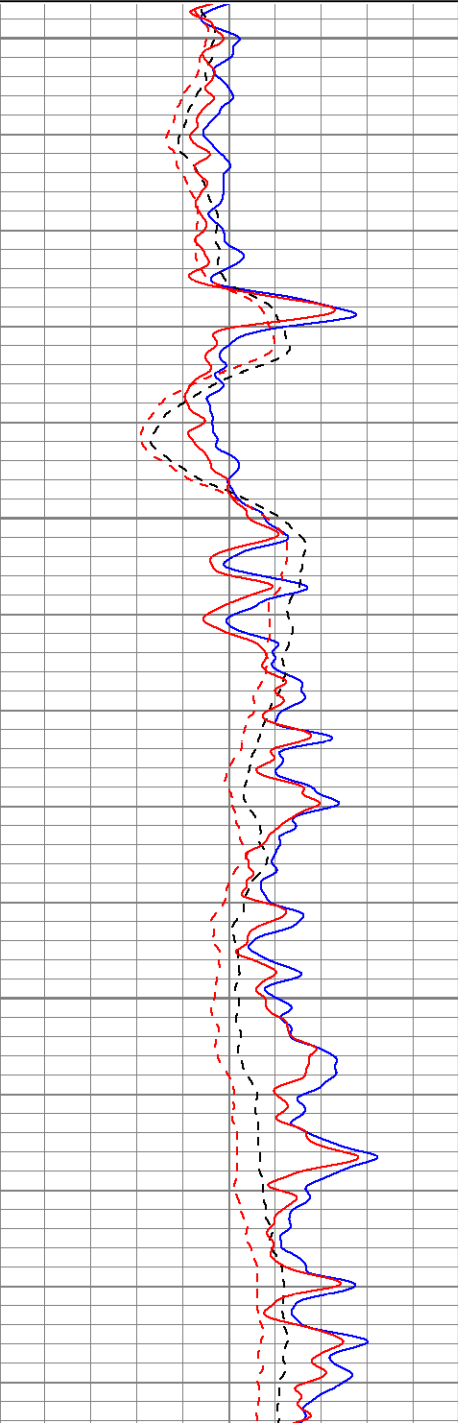
Black Lick, Pa.  
Mercer, Pa.  
Wooster, Oh.  
Cleveland, Ok.  
Trinidad, Co.

# Repeat Section

Database File: xtoge3204.db  
Dataset Pathname: pass1.1  
Presentation Format: dil  
Dataset Creation: Tue Jul 24 12:21:48 2007 by Calc Open-Cased 061129  
Charted by: Depth in Feet scaled 1:240

0	GR (GAPI)	200
-100	SP (mV)	100
0	GR-repeat (GAPI)	200
-100	SP-repeat (mV)	100

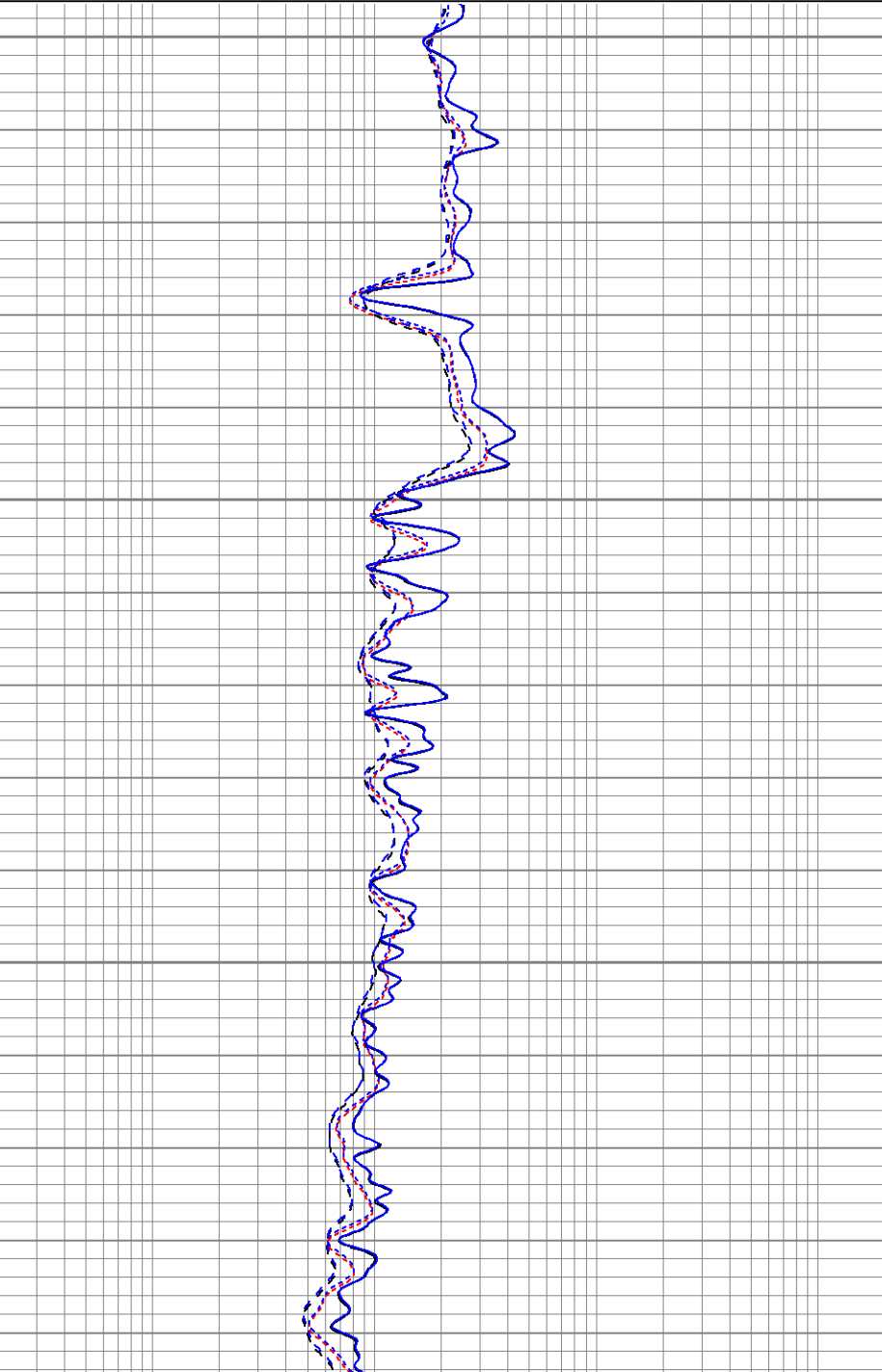
0.2	RILM (Ohm-m)	2000
0.2	RILD (Ohm-m)	2000
0.2	RLL3 (Ohm-m)	2000
0.2	RLL3-repeat (Ohm-m)	2000
0.2	RILM-repeat (Ohm-m)	2000
0.2	RILD-repeat (Ohm-m)	2000



1950

2000

2050





## Master Calibration




	Density			Far Detector	Near Detector	
Magnesium	1.710	g/cc		665.94	685.05	cps
Aluminum	2.590	g/cc		149.68	463.33	cps
Spine Angle = 75.32			Density/Spine Ratio = 0.570			
	Size			Reading		
Small Ring	7.85	in		4.15	V	
Large Ring	14.00	in		9.25	V	

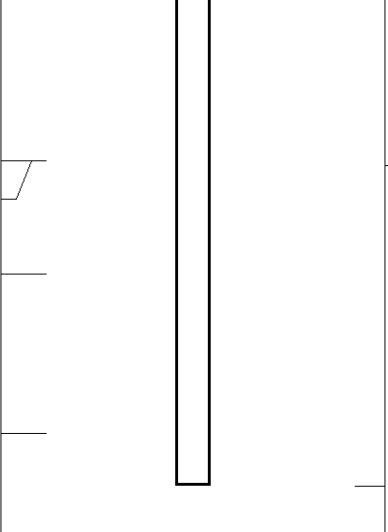
## Gamma Ray Calibration Report

Serial Number: 2001  
 Tool Model: OH  
 Performed: Tue Jul 10 07:42:35 2007  
  
 Calibrator Value: 1.0 GAPI  
  
 Background Reading: 0.0 cps  
 Calibrator Reading: 1.0 cps  
  
 Sensitivity: 0.1300 GAPI/cps

## Neutron Calibration Report

Serial Number: 5145  
 Tool Model: G  
 Performed: Sat Jul 21 07:01:21 2007  
  
 Calibrator Value: 1200 NAPI  
  
 Calibrator Reading: 1700 cps  
  
 Sensitivity: 1 NAPI/cps

Sensor	Offset (ft)	Schematic	Description	Len (ft)	OD (in)	Wt (lb)
NEU	37.19		None	0.75	1.50	5.00
			NEU-G (5145) Gearhart Epithermal	5.75	3.50	85.00
GR	31.62		GR-OH (2001) SIE	3.50	3.25	40.00
LSD DCAL SSD	23.45		CDL-poilex (2118)	8.79	4.00	275.00
	23.04					
	22.91					

CILD	10.60		DIL-G (5375) Gearhart	20.83	4.00	345.00
SP	10.60					
CILM	6.89					
RLL3	1.70					
Dataset: xtoge3204.db: field/well/run1/pass2 Total Length: 39.62 ft Total Weight: 750.00 lb O.D. 4.00 in						