

Patterson

**SINGLE
INDUCTION
LOG**

Company		Pioneer Natural Resources	
Well	Cowboy 14-5 Tr		
Field	Purgatoire River		
County	Las Animas	State	Colorado
Location:	API # : 05 071 08551 00		Other Services
	569' FSL & 1127' FWL		CDL
SEC 5	TWP 32S	RGE 66W	NEUTRON
Permanent Datum	Ground Level	Elevation	
Log Measured From	Kelly Bushing 4' Above G.L.	7798'	
Drilling Measured From	Kelly Bushing		

<<< Fold Here >>>

All interpretations are opinions based on inferences from electrical or other measurements and we cannot and do not guarantee the accuracy or correctness of any interpretation, and we shall not, except in the case of gross or willful negligence on our part, be liable or responsible for any loss, costs, damages, or expenses incurred or sustained by anyone resulting from any interpretation made by any of our officers, agents or employees. These interpretations are also subject to our general terms and conditions set out in our current Price Schedule.

Comments

Well Directions:
Aguilar West To Gulnare, Left At Jarose Gravel Pit, To Four-Way Right,
First Right, Then Next Left To Location.

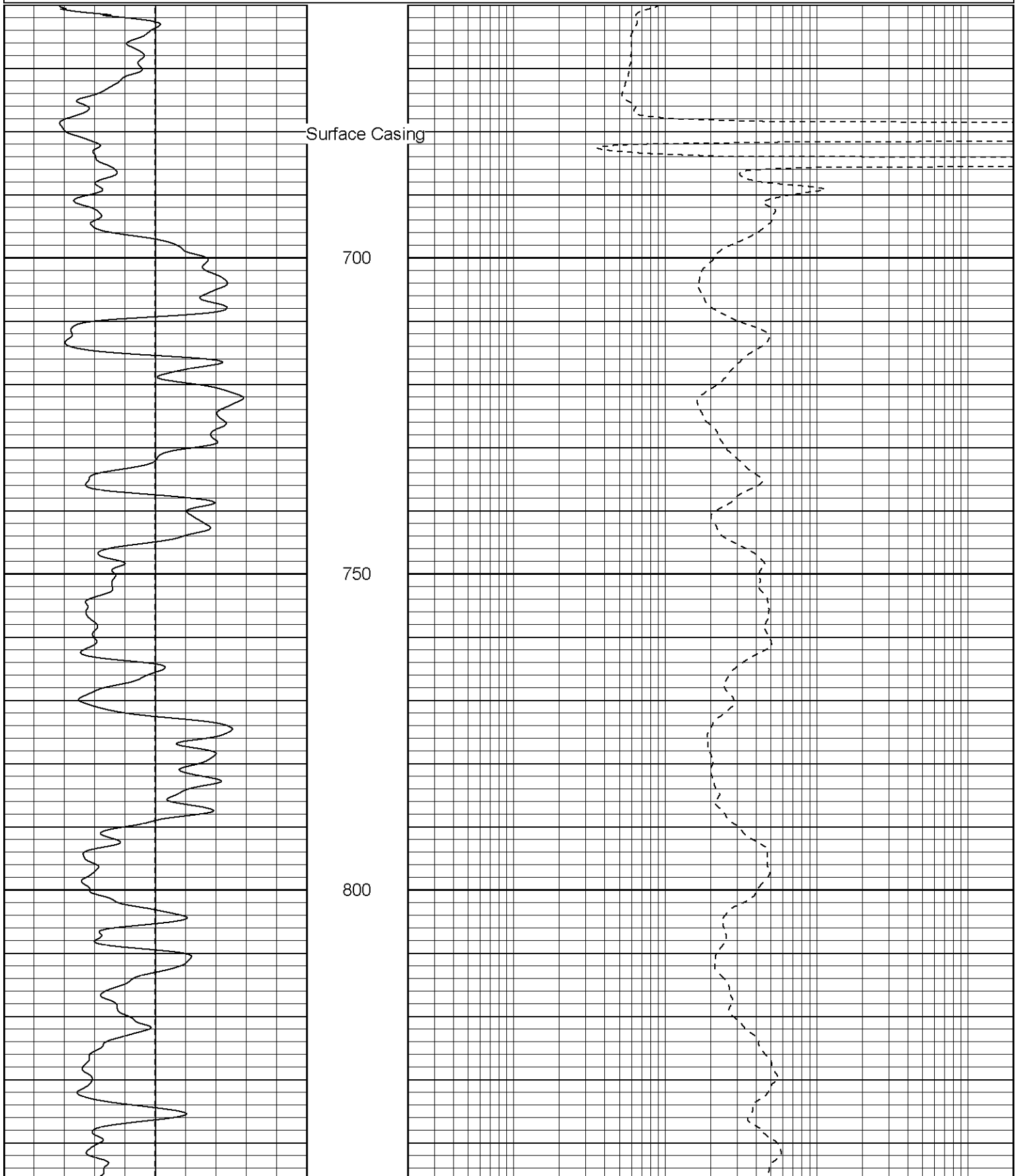
Patterson

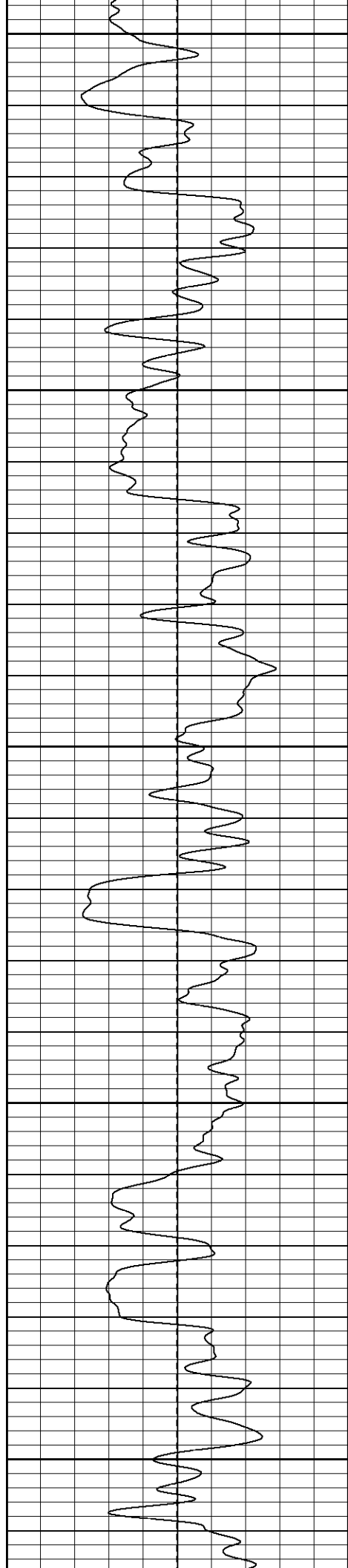
Main Pass

Database File: cowboytr.db
Dataset Pathname: pass2.1
Presentation Format: iel
Dataset Creation: Mon Oct 17 13:48:57 2005 by Calc Warrior 7.0 STD Ope
Charted by: Depth in Feet scaled 1:240

0	GR (GAPI)	200
-100	SP (mV)	100

0.2	DIR (Ohm-m)	2000
0.2	SN (Ohm-m)	2000





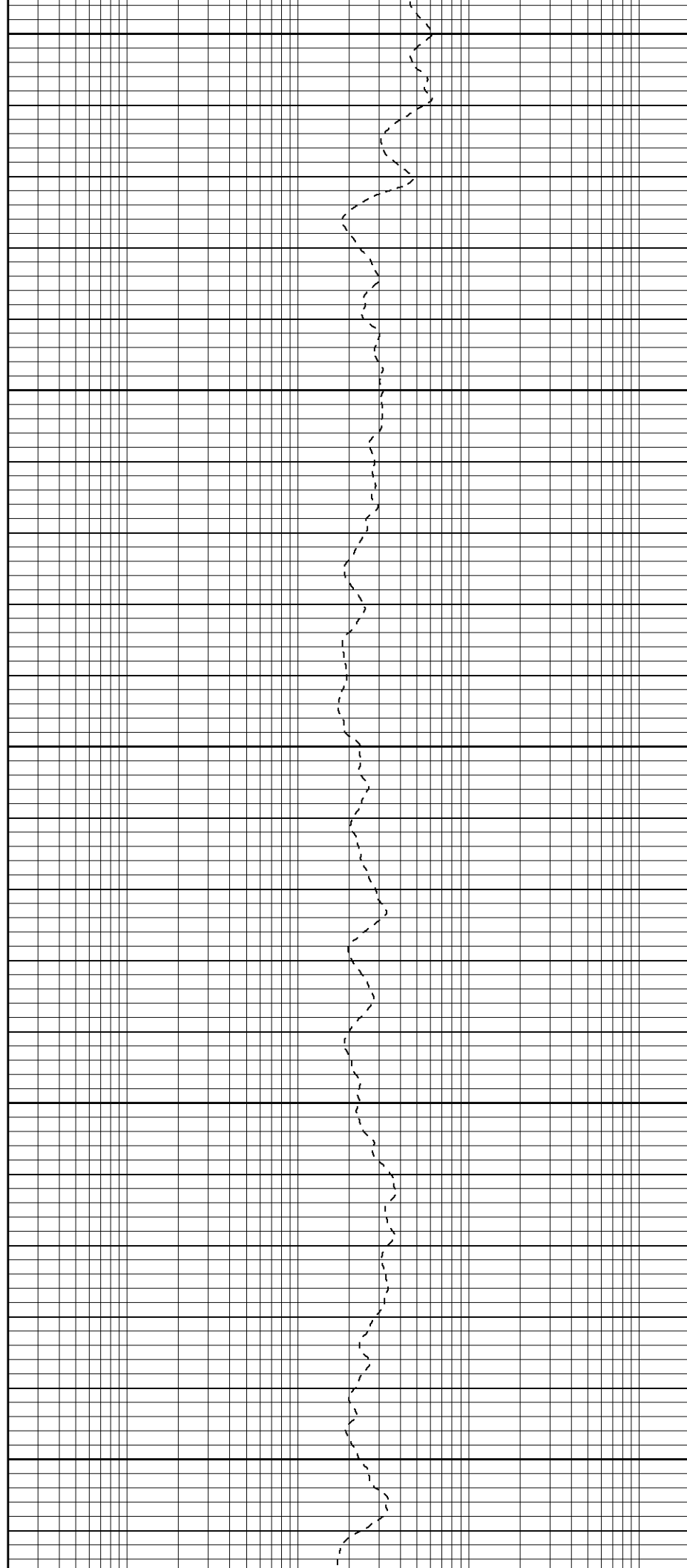
850

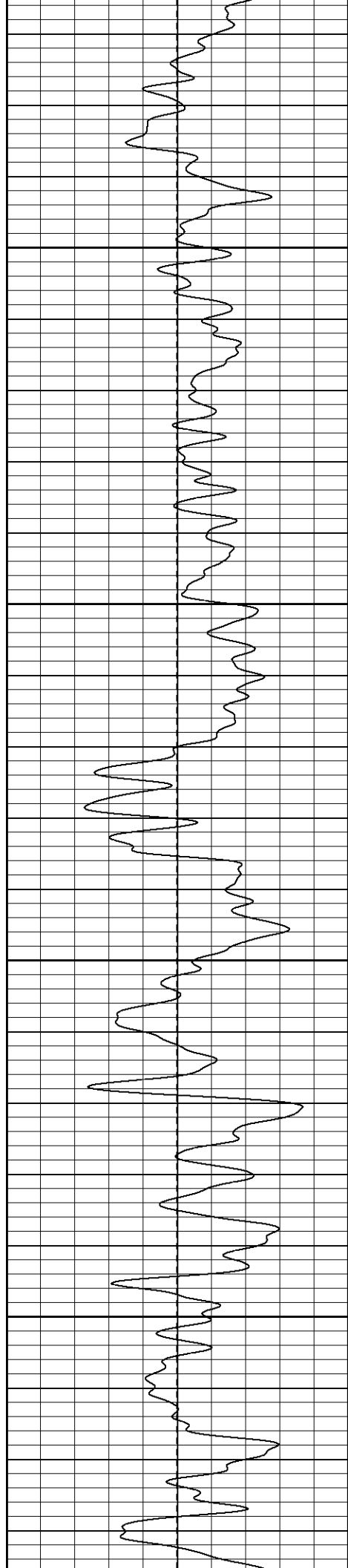
900

950

1000

1050



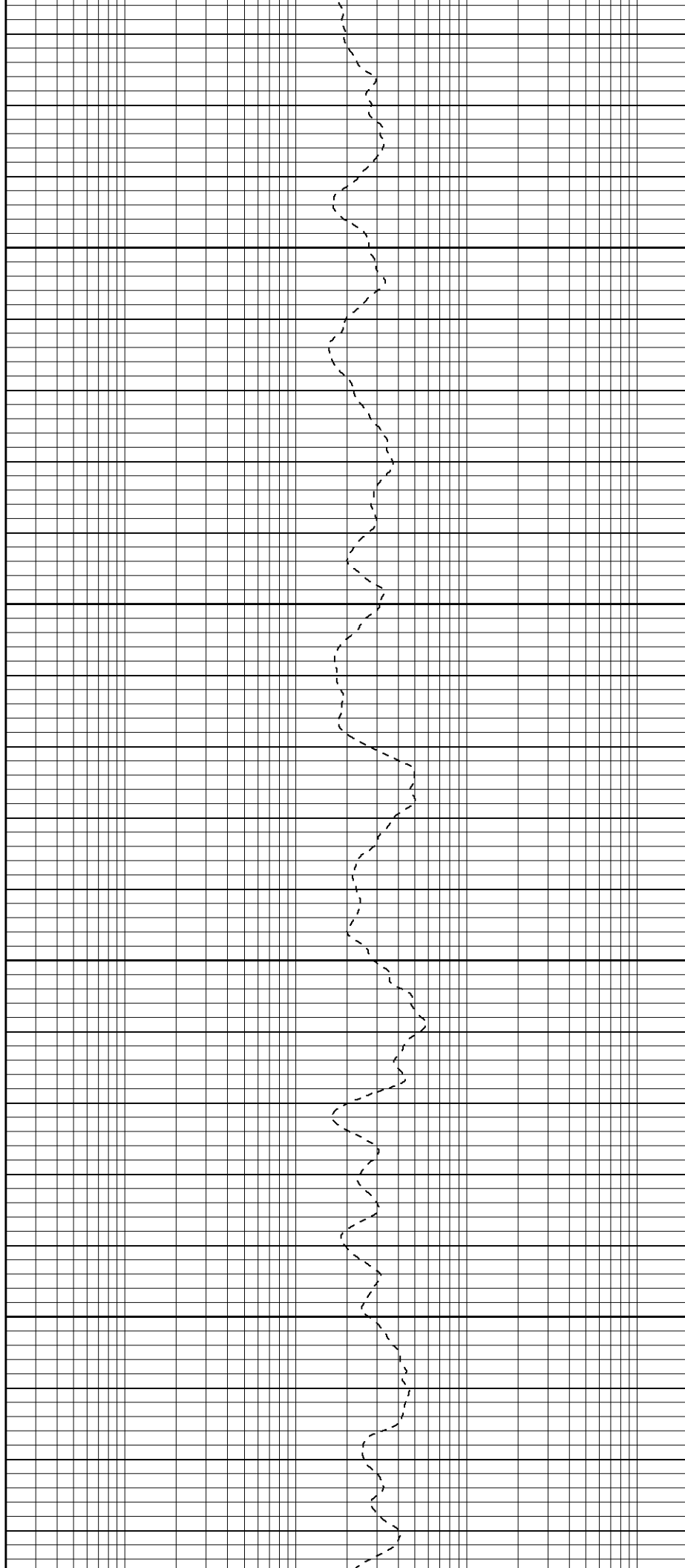


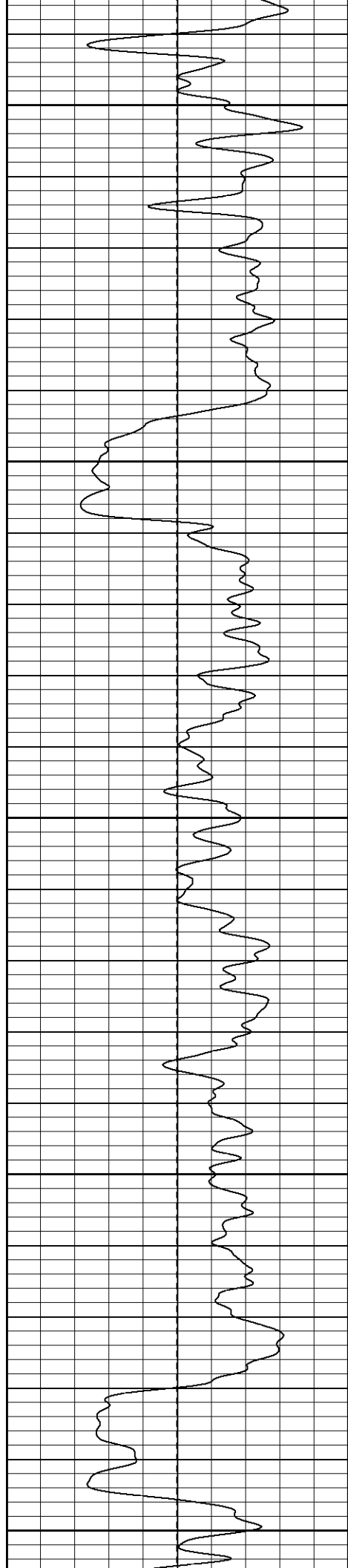
1100

1150

1200

1250





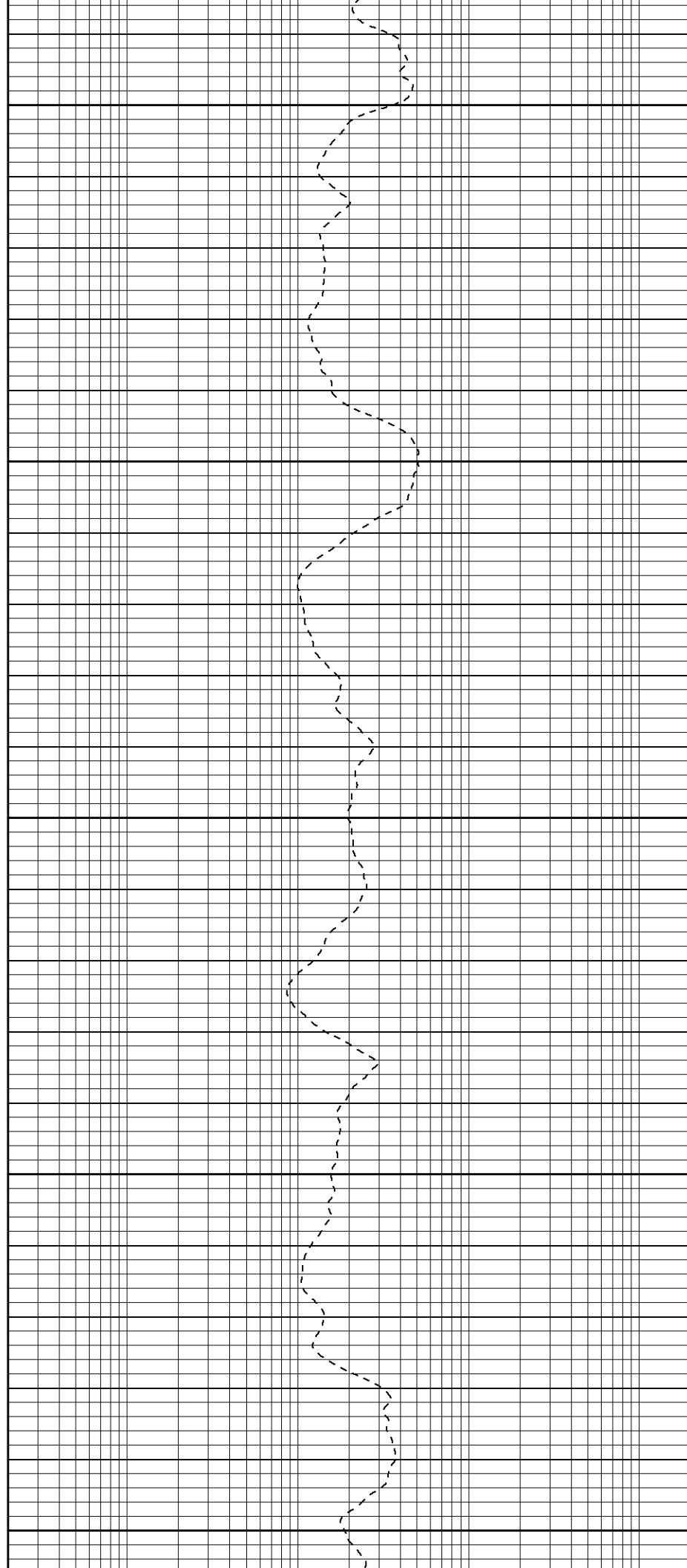
1300

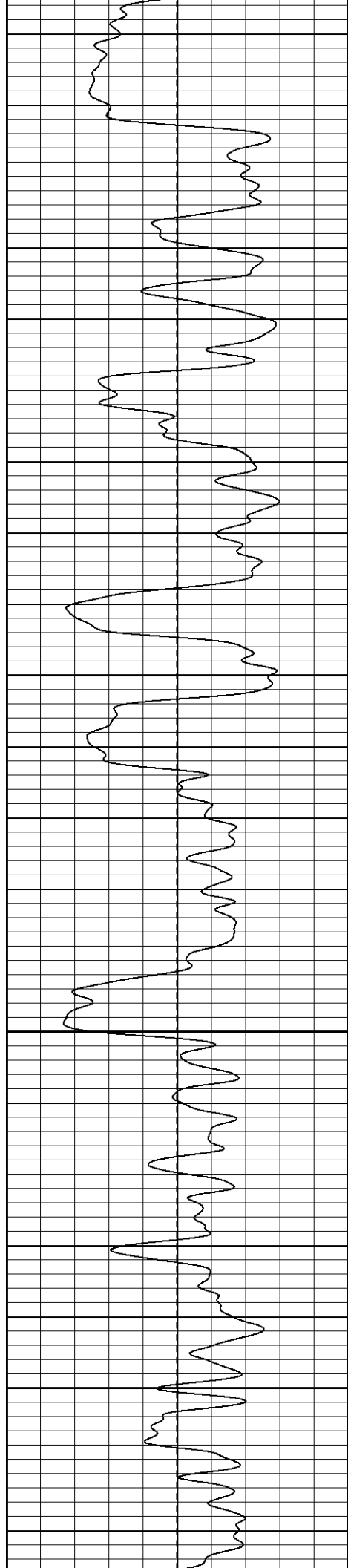
1350

1400

1450

1500



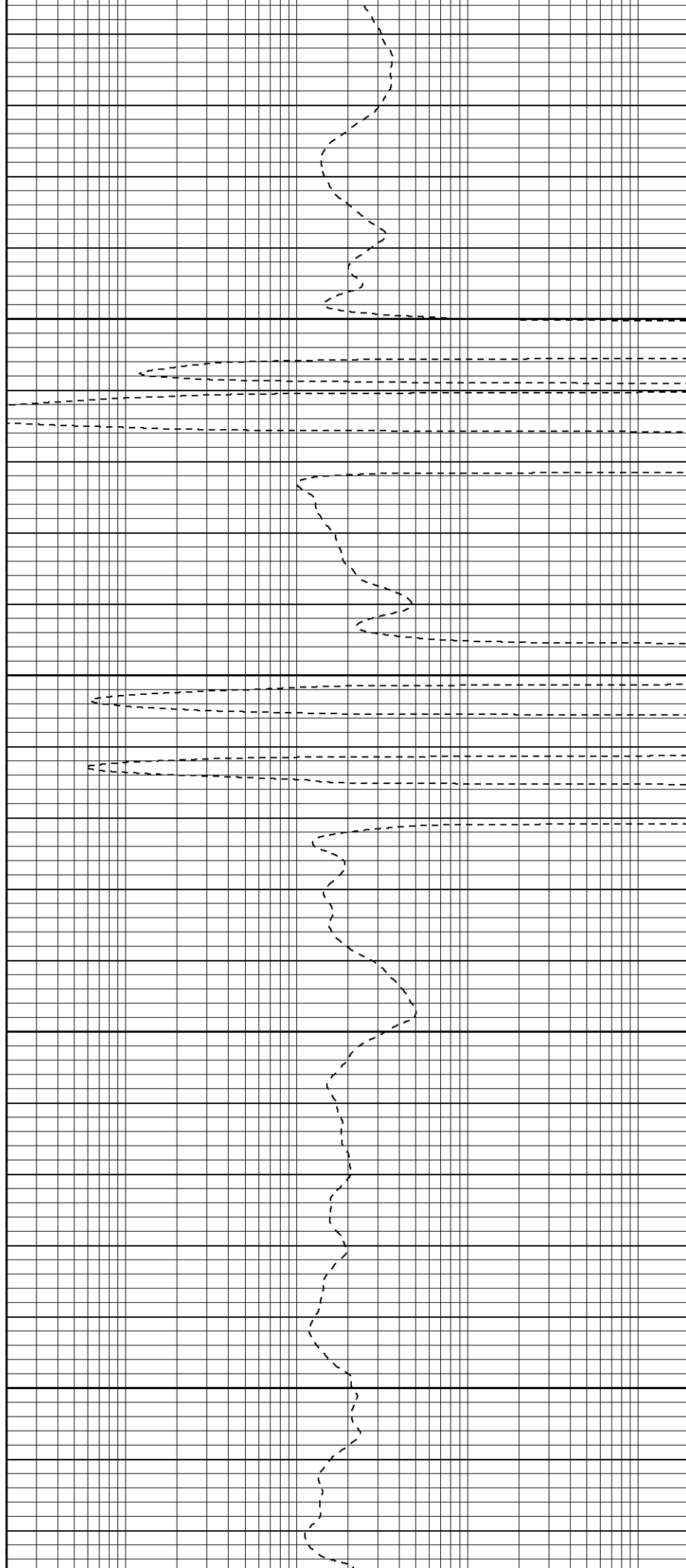


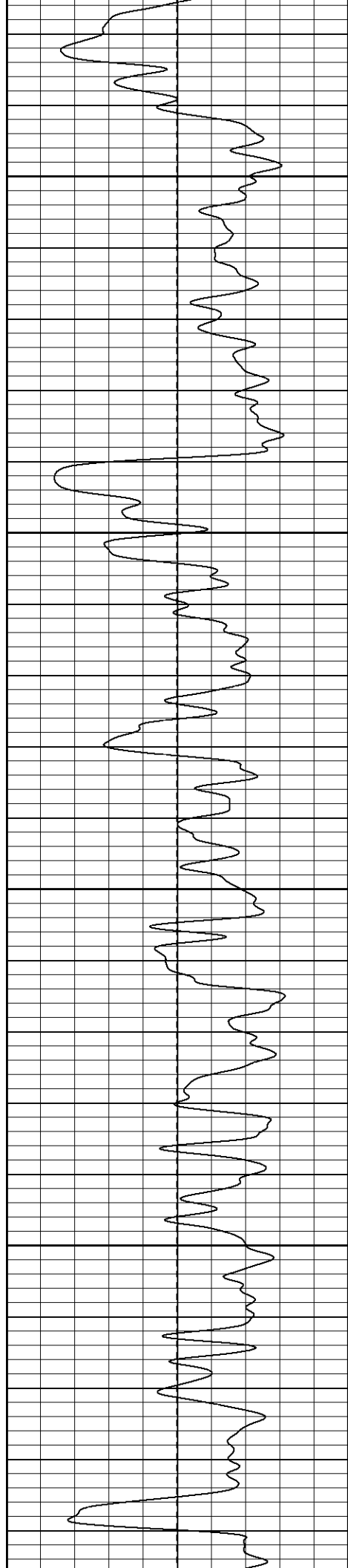
1550

1600

1650

1700



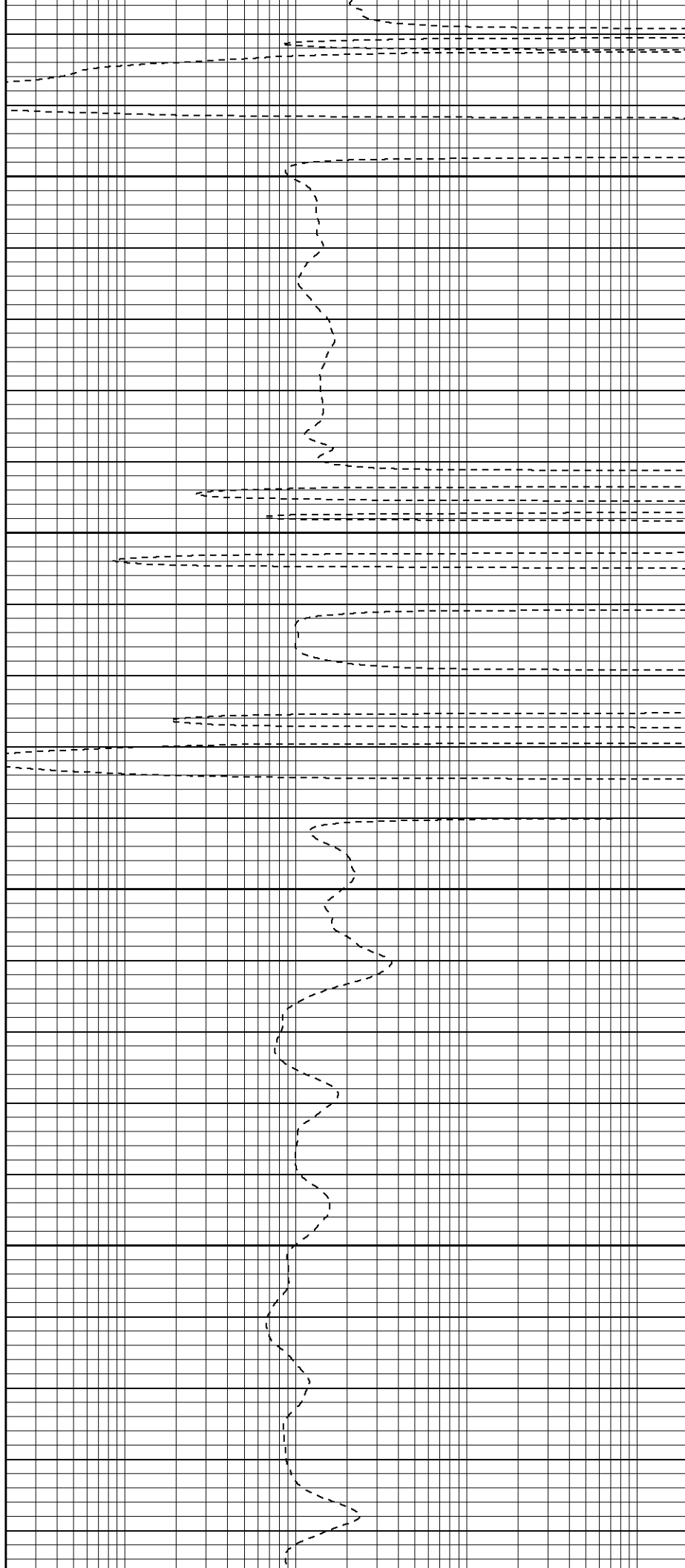


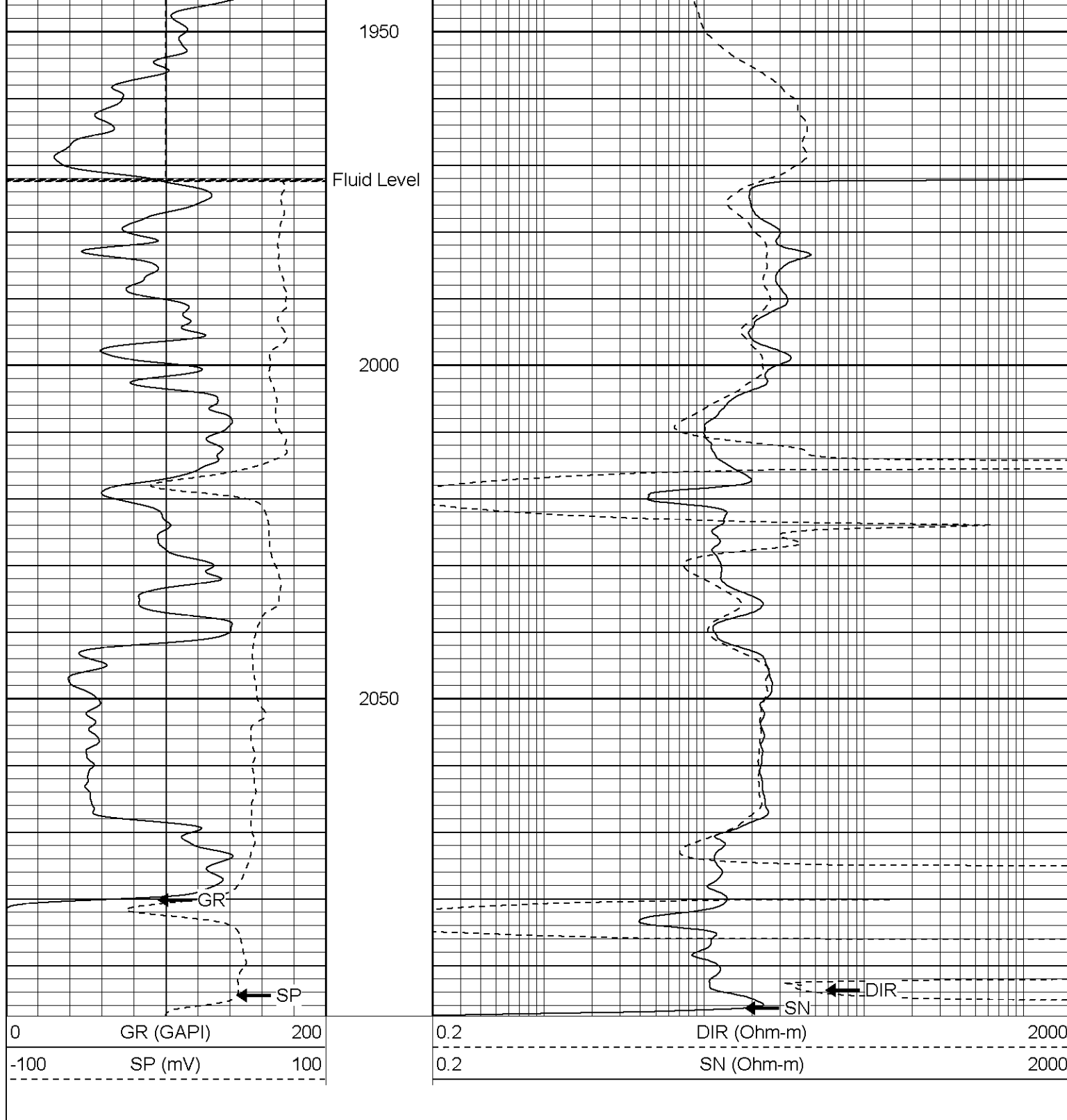
1750

1800

1850

1900

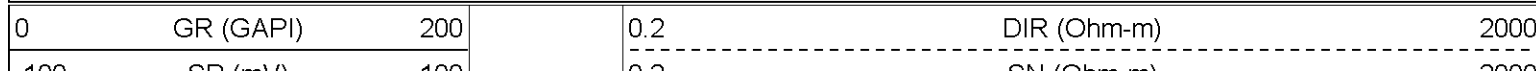




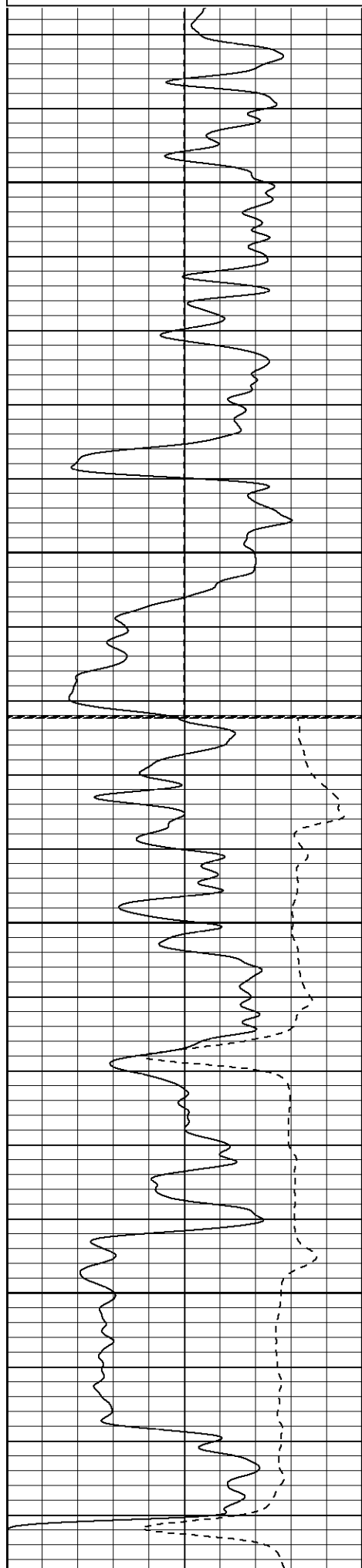
Patterson

Repeat Section

Database File: cowboytr.db
 Dataset Pathname: pass1.1
 Presentation Format: iel
 Dataset Creation: Mon Oct 17 13:48:18 2005 by Calc Warrior 7.0 STD Ope
 Charted by: Depth in Feet scaled 1:240



-100 SP (mV) 100



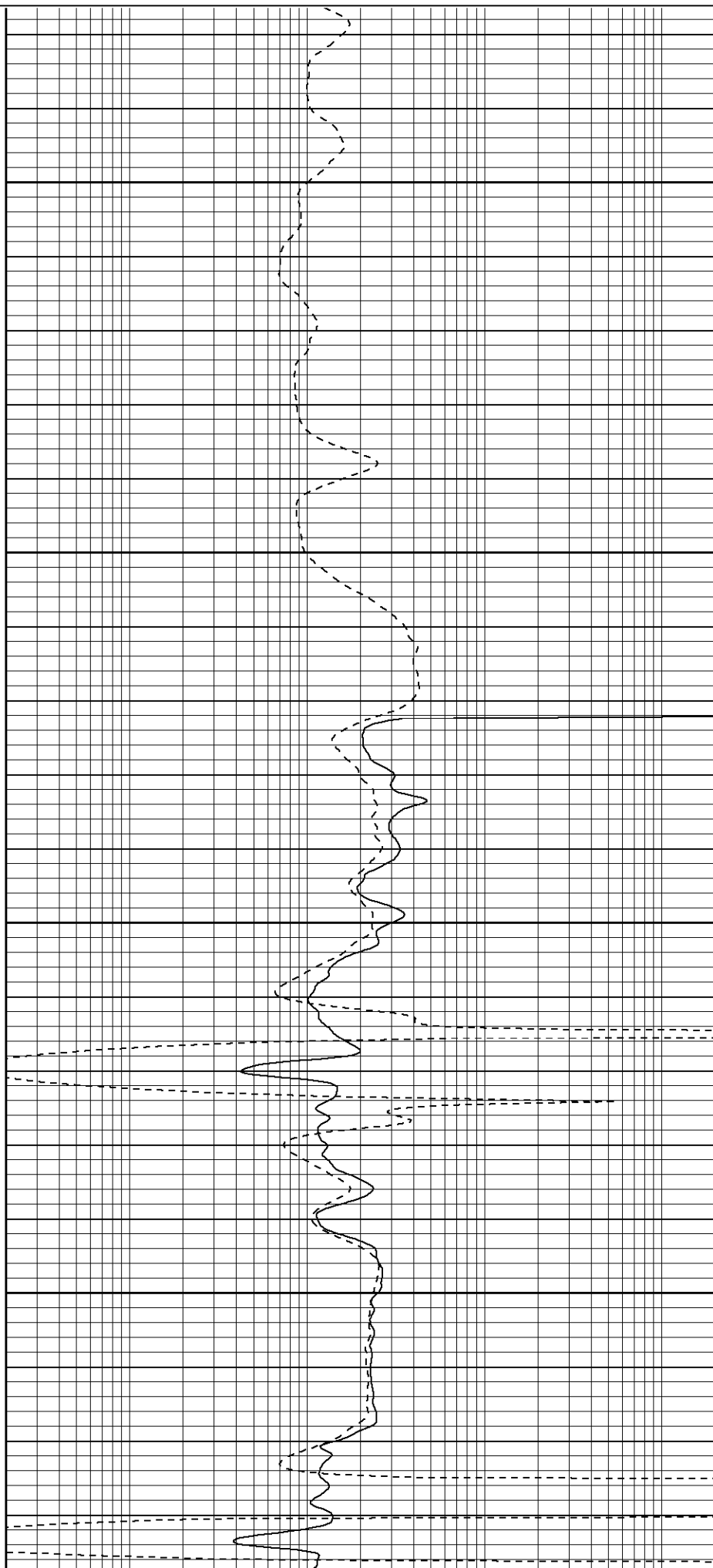
1900

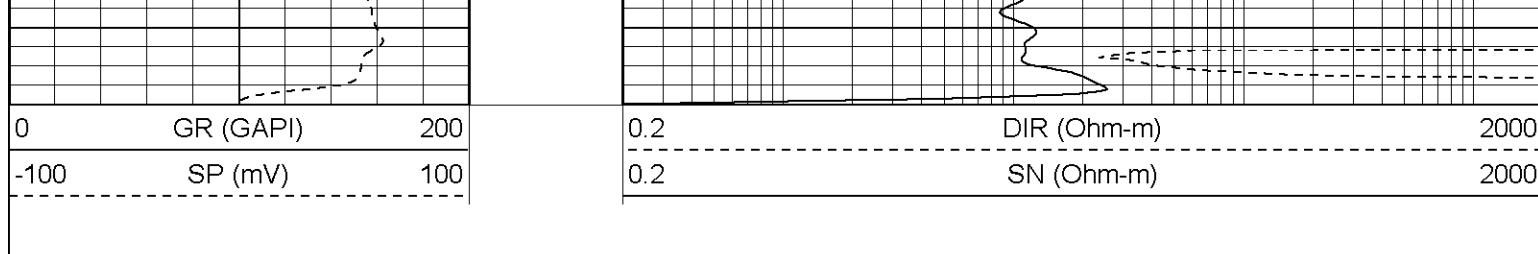
1950

2000

2050

0.2 SN (Orim-m) 2000





Induction Tool Calibration Report				
Serial Number:		106		
Tool Model:		G		
Downhole Cal Performed:		Tue Sep 13 18:52:33 2005		
Surface Cal Performed:		Mon Sep 12 13:52:08 2005		
Surface Calibration:		Air	Loop	
Conductivity Reference:		0.000	450.000	mmho
Conductivity Reading:		-0.060	0.634	V
Internal Reference:		Zero	Cal	
Conductivity Reference:		0.000	500.000	mmho
Conductivity Reading:		0.002	0.633	V
Downhole Calibration:		Internal Zero	Internal Cal	
Conductivity Reference:		0.004	449.717	mmho
Conductivity Reading:		37.351	470.551	V
Short Normal Reference:		0.000	17.000	Ohm-m
Short Normal Reading:		0.006	0.207	V
Results:		Gain	Offset	
Loop Conductivity:		648.669	38.920	
Downhole Correction:		1.038	-38.770	
Short Normal Resistivity:		90.000	0.000	

Gamma Ray Calibration Report				
Serial Number:		2001		
Tool Model:		OH		
Performed:		Wed Oct 05 13:37:01 2005		
Calibrator Value:		1.0	GAPI	
Background Reading:		0.0	cps	
Calibrator Reading:		1.0	cps	
Sensitivity:		0.2000	GAPI/cps	

Sensor	Offset (ft)	Schematic	Description	Len (ft)	OD (in)	Wt (lb)
CHD	19.50		None	0.75	1.50	5.00
GR	17.25		GR-OH (2001) SIE	3.50	3.25	40.00
DIC	6.89		IEL-G (106)	15.25	4.00	178.00

