



SUPERIOR
Black Lick, Pa.
Mercer, Pa.
Wooster, Oh.
Cleveland, Ok.
Trinidad, Co.

CEMENT BOND GAMMA RAY LOG

Company XTO Energy Inc.
Well New Elk 36-03
Field Purgatorie River
County Las Animas
State CO

Company XTO Energy Inc.
Well New Elk 36-03
Field Purgatorie River
County Las Animas
State CO

Location:

API # :

368' FNL & 1876 FWL

Other Services
Pressure
Control

SEC 36 TWP 33S RGE 68W

Permanent Datum Ground Level Elevation 7588'
Log Measured From Ground Level
Drilling Measured From Ground Level

Elevation
K.B. -----
D.F. -----
G.L. 7588'

Date

4-18-07

Run Number

Two

Depth Driller

1900'

Depth Logger

1380'

Bottom Logged Interval

1378'

Top Log Interval

Surface

Open Hole Size

7 7/8"

Type Fluid

Water

Density / Viscosity

///

Max. Recorded Temp.

///

Estimated Cement Top

76'

Time Well Ready

ROA

Time Logger on Bottom

9:45AM

Equipment Number

T0698

Location

Trinidad

Recorded By

J Sinerros

Witnessed By

Mr. Mike Polley

Borehole Record

Bit

From

To

Size

Weight

From

To

Tubing Record

From

To

Size

Weight

From

To

Size

Weight

From

To

Size

Weight

From

To

Size

Weight

From

To

Size

Weight

From

To

Size

Weight

From

To

Size

Weight

From

To

Size

Weight

From

To

Size

Weight

From

To

Size

Weight

From

To

Size

Weight

From

To

Size

Weight

From

To

Size

Weight

From

To

Size

Weight

From

To

Size

Weight

From

To

Size

Weight

From

To

Size

Weight

From

To

Size

Weight

From

To

Size

Weight

From

To

Size

Weight

From

To

Size

Weight

From

To

Size

Weight

From

To

Size

Weight

From

To

Size

Weight

From

To

Size

Weight

From

To

Size

Weight

From

To

Size

Weight

From

To

Size

Weight

From

To

Size

Weight

From

To

Size

Weight

From

To

Size

Weight

From

To

Size

Weight

From

To

Size

Weight

From

To

Size

Weight

From

To

Size

Weight

From

To

Size

Weight

From

To

Size

Weight

From

To

Size

Weight

From

To

Size

Weight

From

To

Size

Weight

From

To

Size

Weight

From

To

Size

Weight

From

To

Size

Weight

From

To

Size

Weight

From

To

Size

Weight

From

To

Size

Weight

From

To

Size

Weight

From

To

Size

Weight

From

To

Size

Weight

From

To

Size

Weight

From

To

Size

Weight

From

To

Size

Weight

From

To

Size

Weight

From

To

Size

Weight

From

To

Size

Weight

From

To

Size

Weight

From

To

Size

Weight

From

To

Size

Weight

From

To

Size

Weight

From

To

Size

Weight

From

To

Size

Weight

From

To

Size

Weight

From

To

Size

Weight

From

To

Size

Weight

From

To

Size

Weight

From

To

Size

Weight

From

To

Size

Weight

From

To

Size

Weight

From

To

Size

Weight

From

To

Size

Weight

From

To

Size

Weight

From

To

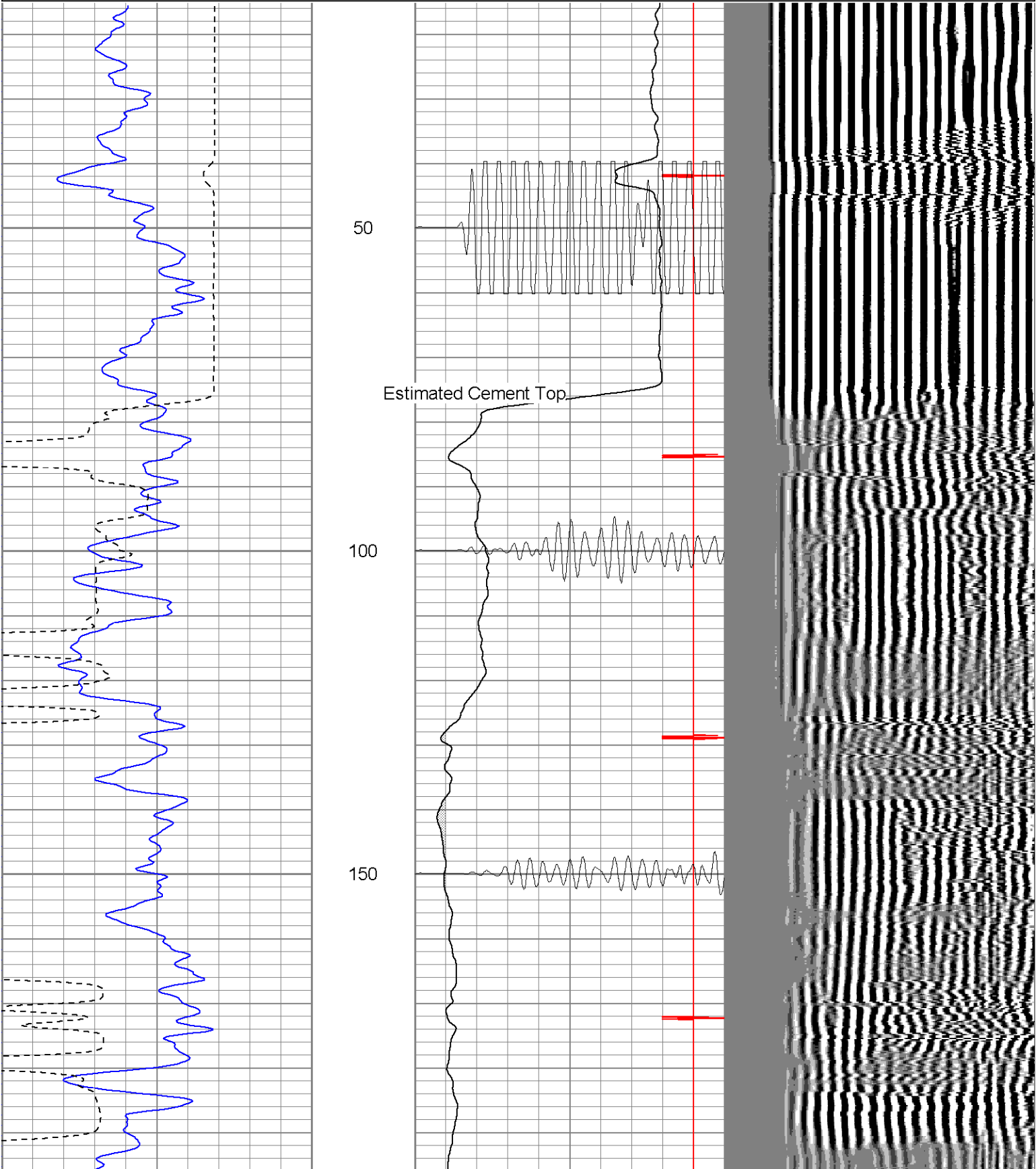
Size

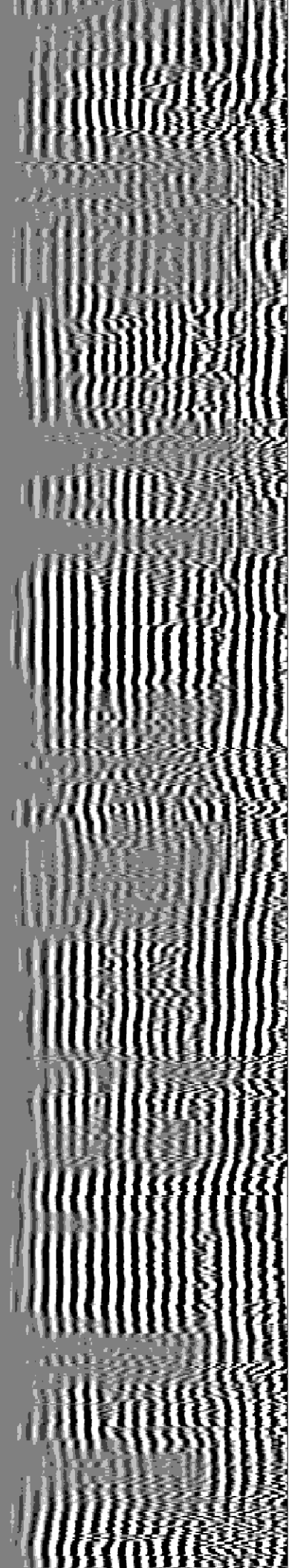
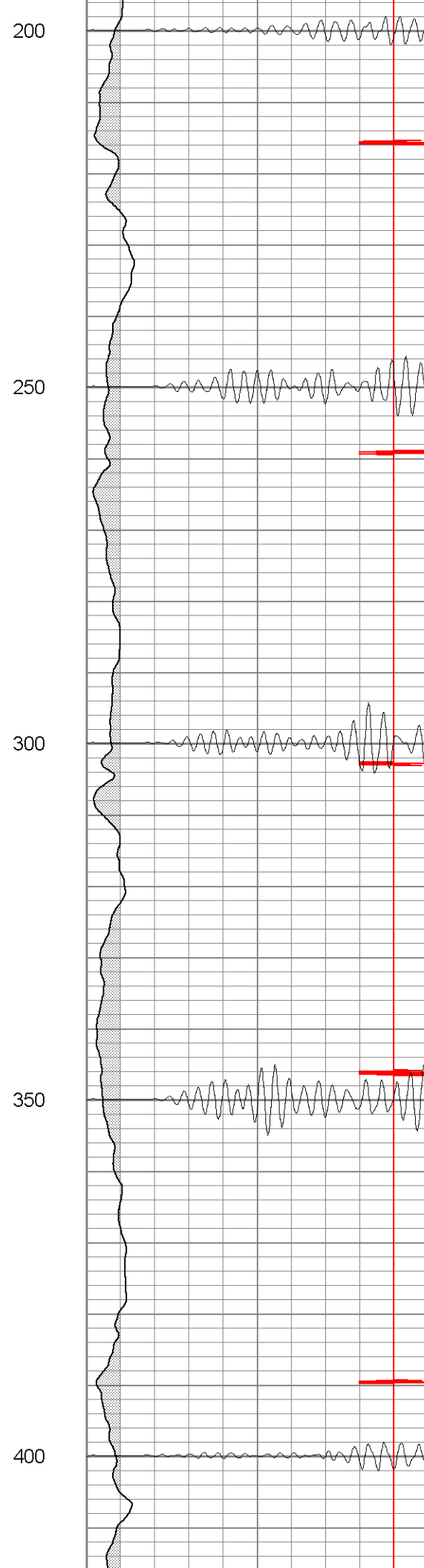
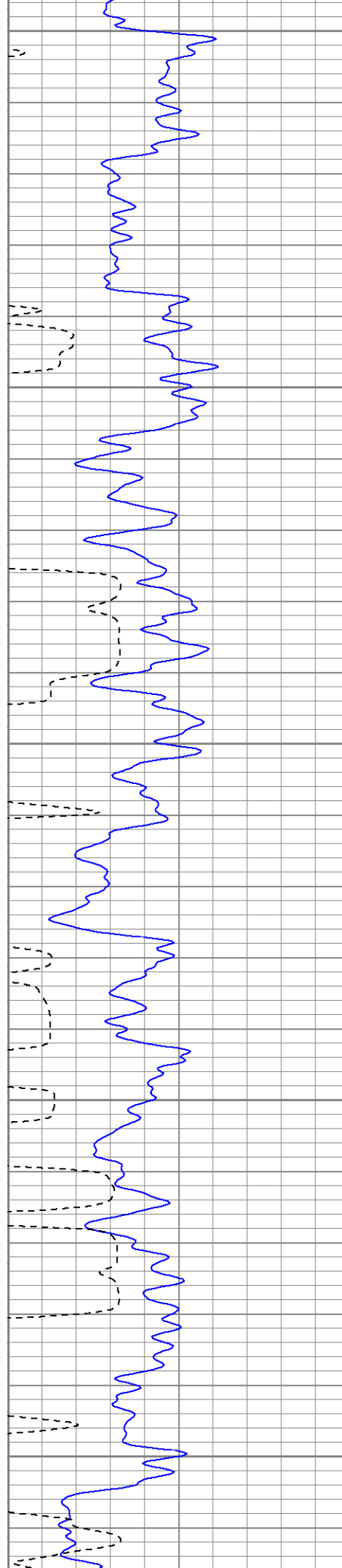
Weight

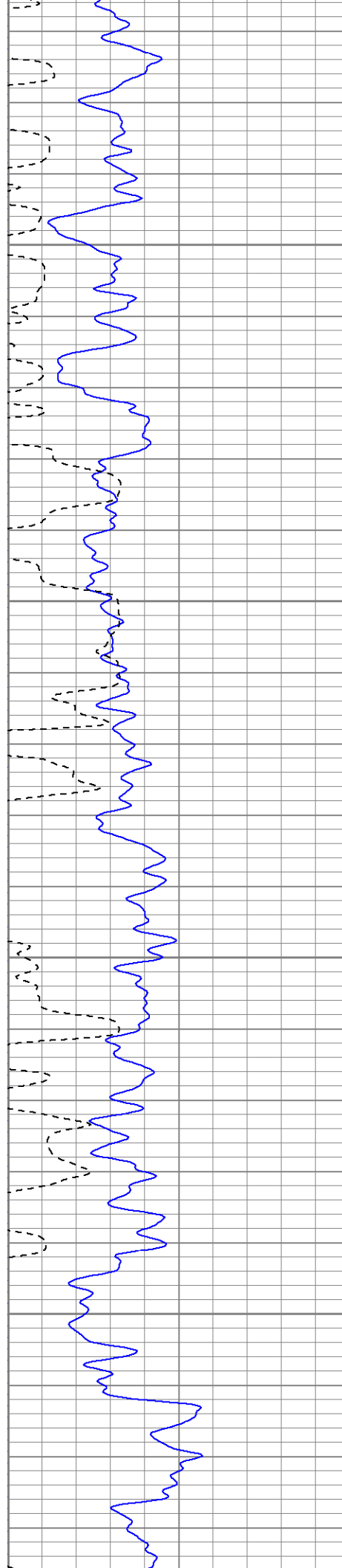
From

Database File: ne360341807b.db
Dataset Pathname: pass2
Presentation Format: cblrt
Dataset Creation: Wed Apr 18 09:56:10 2007 by Log Open-Cased 060407
Charted by: Depth in Feet scaled 1:240

0	GR (GAPI)	200	0	AMP3 (mV)	100	200	Variable Density	1200
200	GR (GAPI)	400	18	CCL	-2			
400	TT3 (usec)	200	200	CBL5	1200			





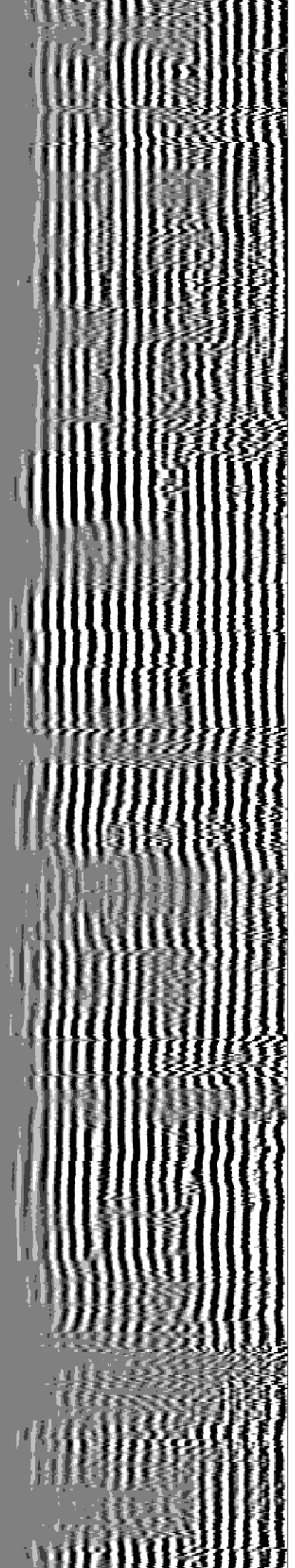


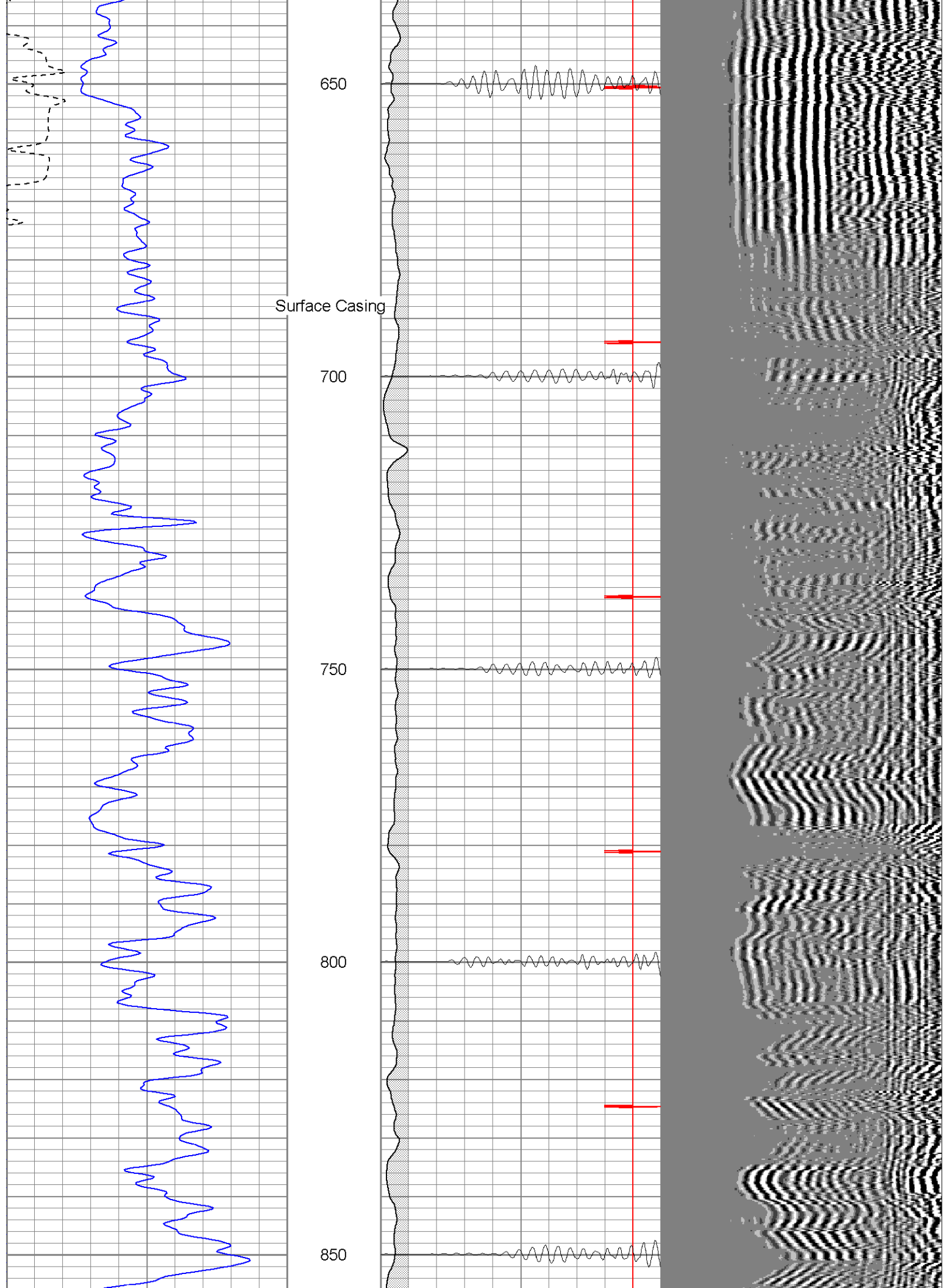
450

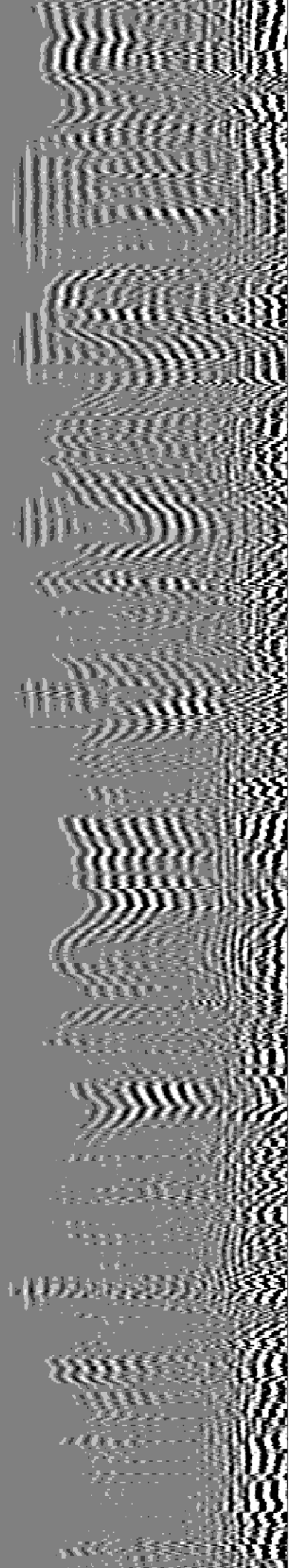
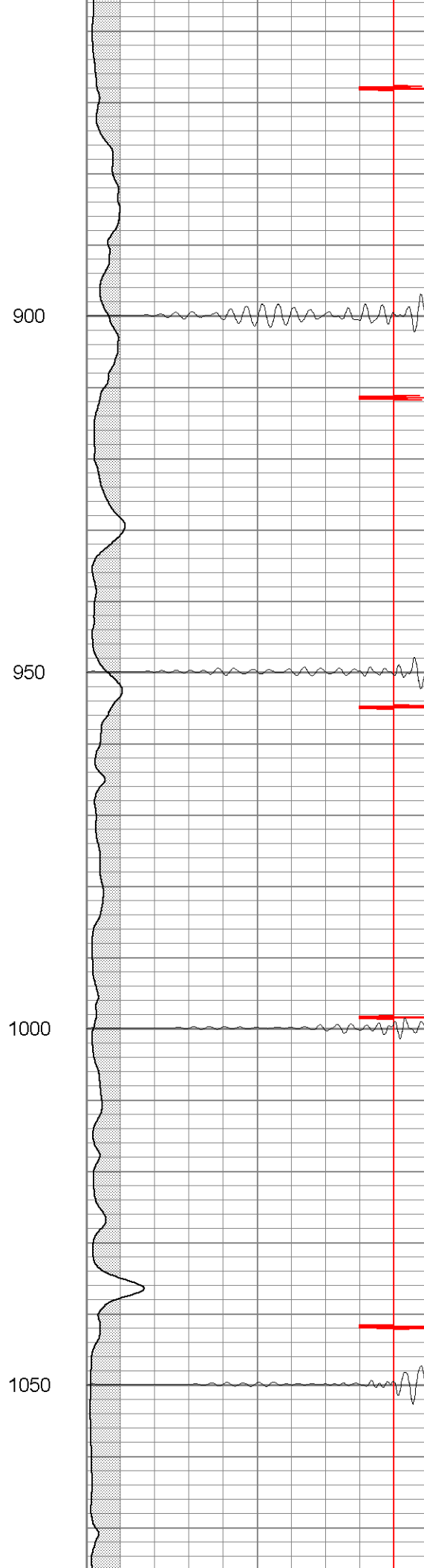
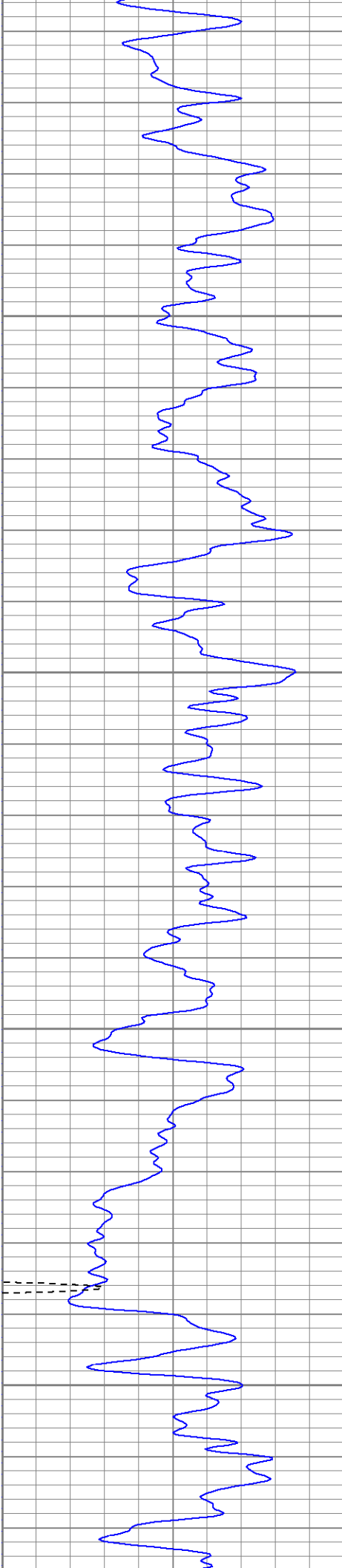
500

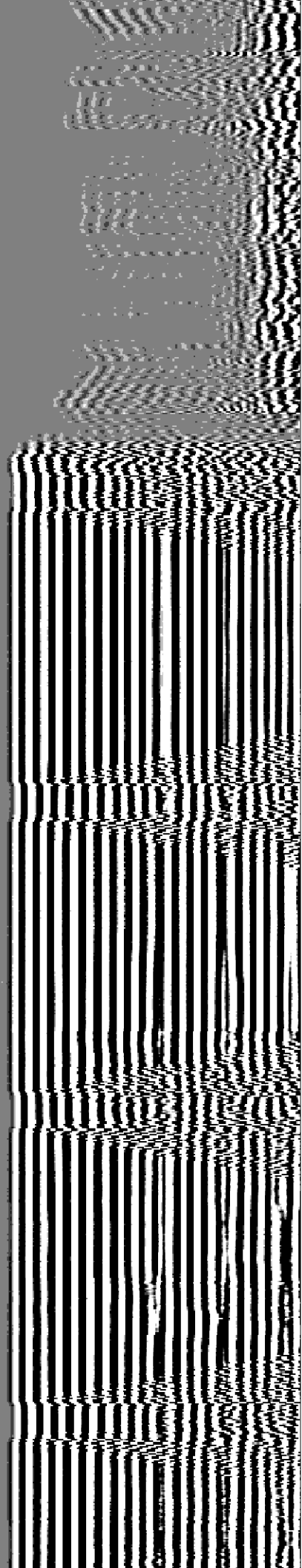
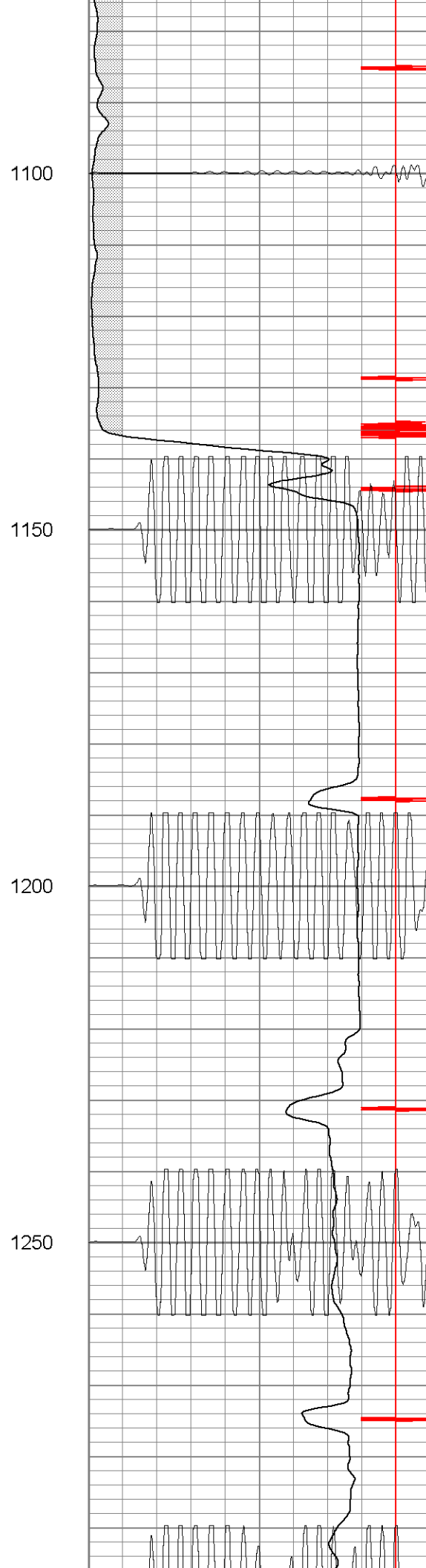
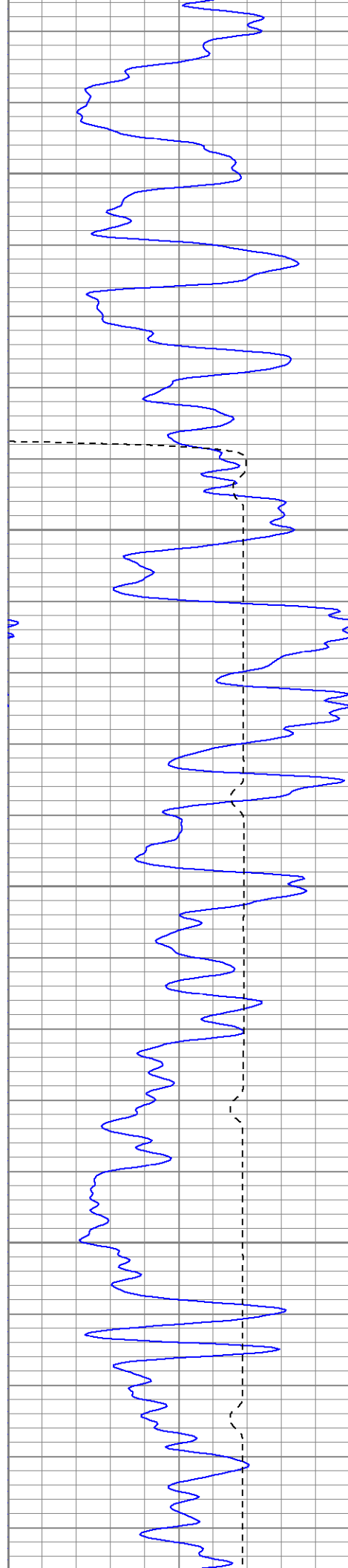
550

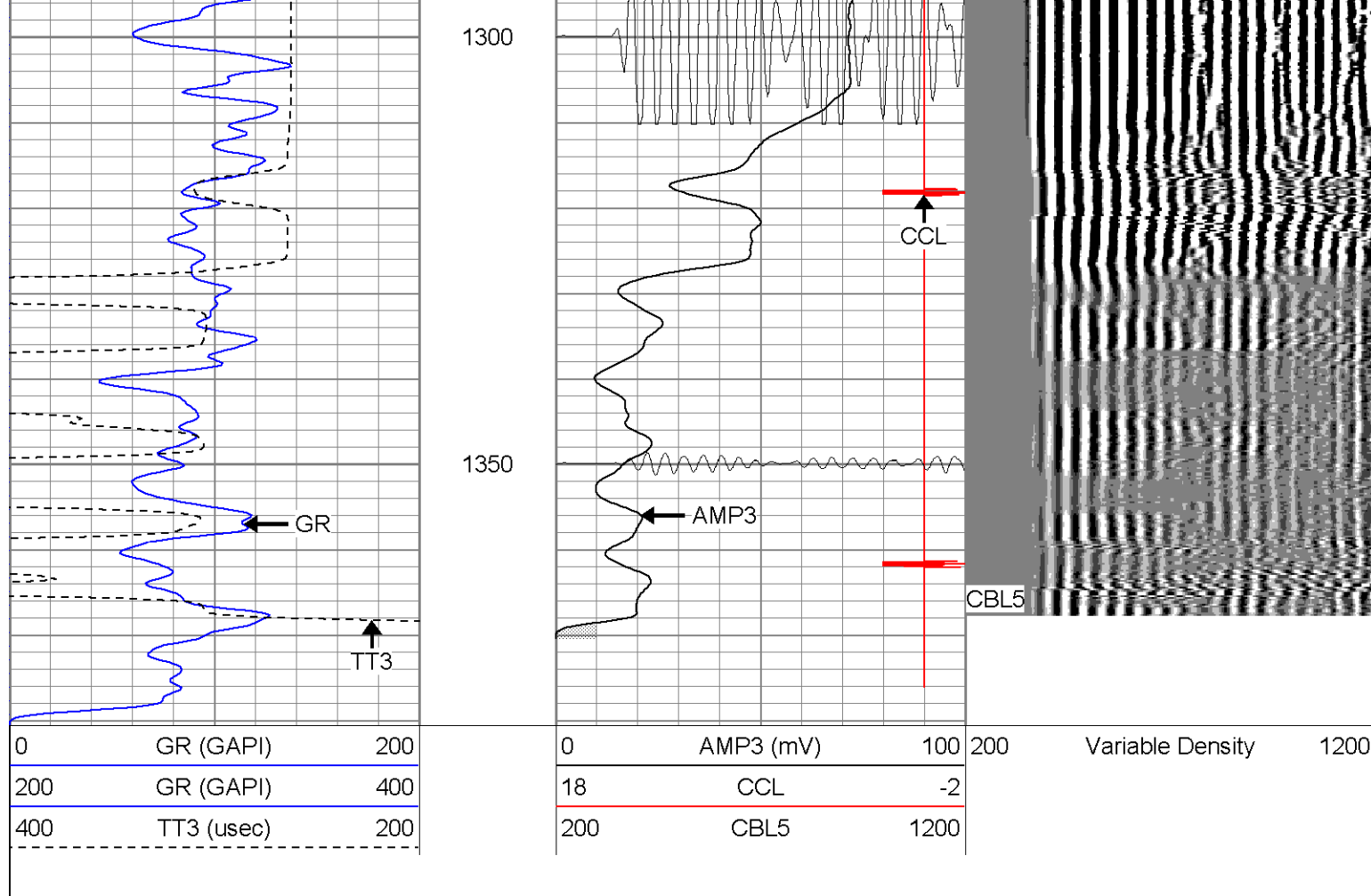
600









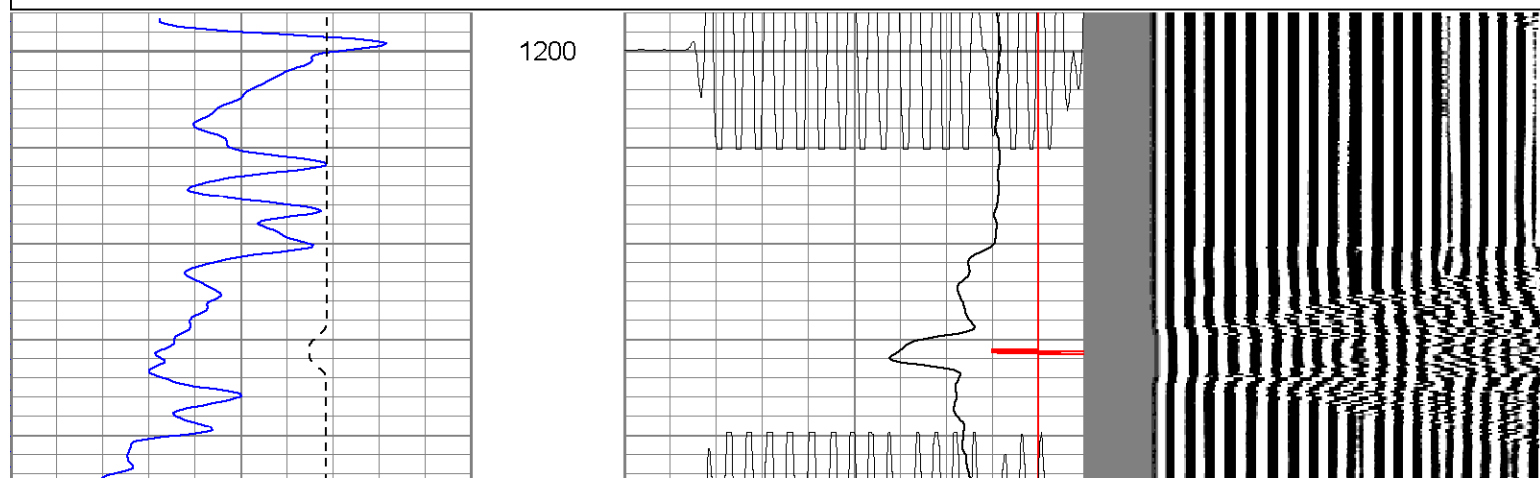
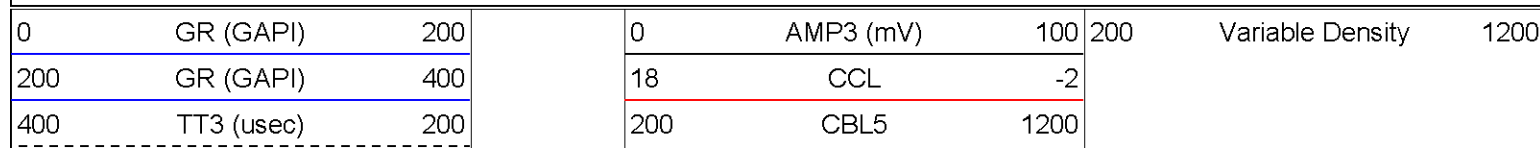


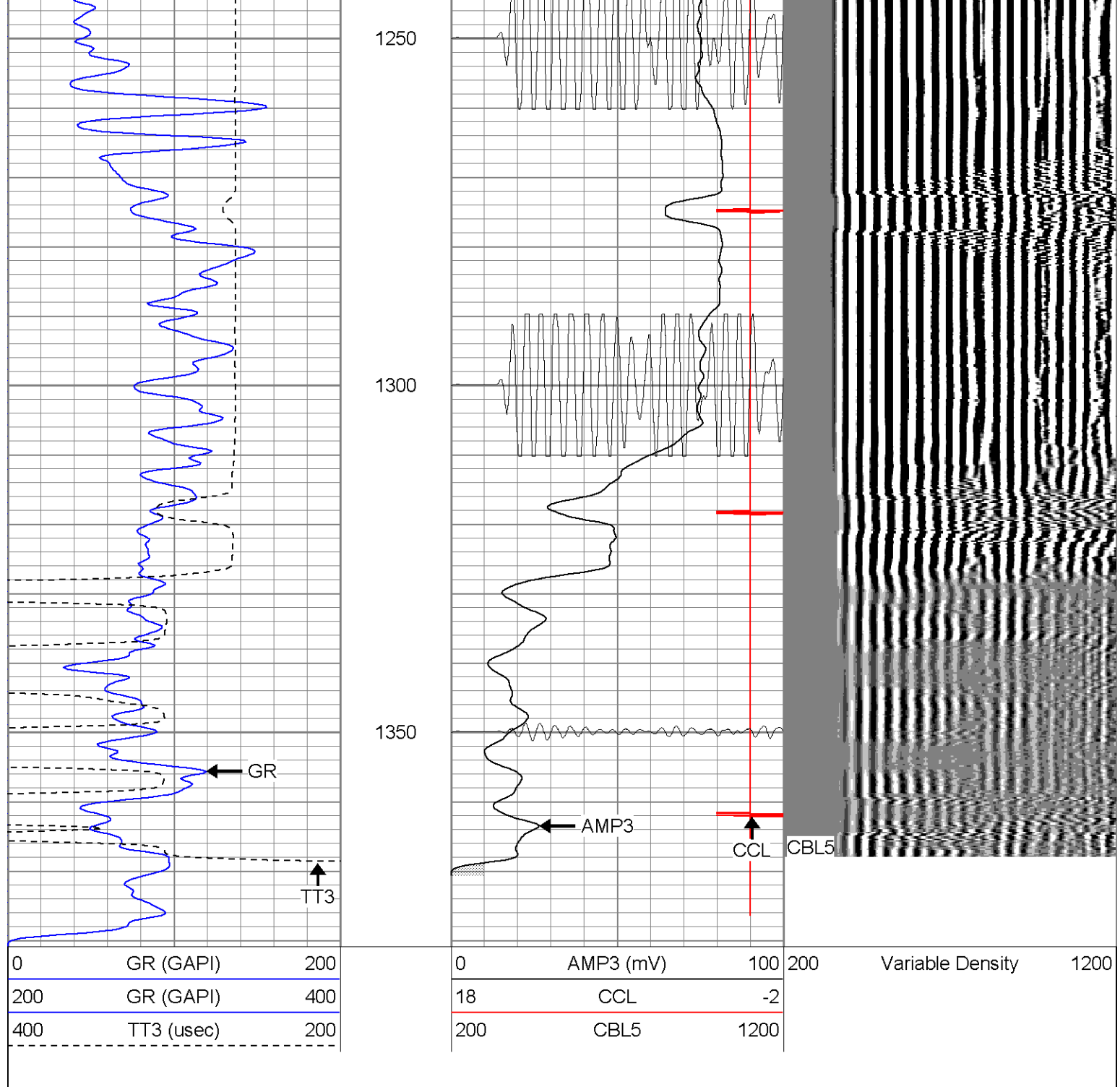
SUPERIOR

Black Lick, Pa.
Mercer, Pa.
Wooster, Oh.
Cleveland, Ok.
Trinidad, Co.

Repeat Section (0PSI)

Database File: ne360341807b.db
Dataset Pathname: pass1
Presentation Format: cblrt
Dataset Creation: Wed Apr 18 09:48:25 2007 by Log Open-Cased 060407
Charted by: Depth in Feet scaled 1:240





Calibration Report

Database File: ne360341807b.db
Dataset Pathname: pass1
Dataset Creation: Wed Apr 18 09:48:25 2007 by Log Open-Cased 060407

Gamma Ray Calibration Report

Serial Number: Titan2.75
Tool Model: 2.75
Performed: Thu Apr 12 13:38:58 2007

Calibrator Value: 200.0 GAPI

Background Reading: 40.0 cps
Calibrator Reading: 240.0 cps

Sensitivity: 1.1000 GAPI/cps

Cement Bond Log Calibration Report			
Serial Number:	Titan4		
Tool Model:	4		
Performed:	Thu Apr 12 14:22:52 2007		
Depth:	1054.62	ft	
Casing Diameter:	5.5	in	
	3' Spacing	5' Spacing	
Signal Zero:	0	1	mV
Calibrated Amplitude:	85	85	mV
Reading at Signal Zero:	0.00161133	0.0143555	V
Reading in Free Pipe:	1.82	1.65081	V
Gain:	46.7447	51.3306	
Offset:	0.15	0.263125	

Sensor	Offset (ft)	Schematic	Description	Len (ft)	OD (in)	Wt (lb)
CHD	20.38		CHD-None (0)	0.75	1.50	5.00
CENT	19.63		CENT-X (2)	3.00	1.69	25.00
WVF5	12.82		CBL-4 (Titan4)	8.15	2.25	110.00
WVF3	11.82					
CENT	8.48		CENT-X (1)	3.00	1.69	25.00
CCL	4.27		CCL-2.75 (Titan2.75)	1.71	2.75	15.00
GR	1.42	GR-2.75 (Titan2.75) Two Point	3.77	2.75	25.00	
Dataset: ne360341807b.db: field/well/run1/pass1 Total Length: 20.38 ft Total Weight: 205.00 lb O.D.: 2.75 in						