

CompanyXTO Energy Inc.  
Well Golden Eagle 20-04  
Field Purgatorie River  
County Las Animas  
State CO

Company XTO Energy Inc.  
Well Golden Eagle 20-04  
Field Purgatorie River  
County Las Animas State CO

Location: API #: 05 071 08599 00  
702' FNL & 487' FWL  
SEC 20 TWP 33S RGE 67W  
Permanent Datum Ground Level Elevation 7697'  
Log Measured From Ground Level  
Drilling Measured From Ground Level  
Other Services  
Elevation  
K.B. -----  
D.F. -----  
G.L. 7697'

Date	12/05/05					
Run Number	one					
Depth Driller	1205'					
Depth Logger	940'					
Bottom Logged Interval	938'					
Top Log Interval	10'					
Open Hole Size	11.25"					
Type Fluid	water					
Density / Viscosity	///					
Max. Recorded Temp.	82F					
Estimated Cement Top	105'					
Time Well Ready	8:40					
Time Logger on Bottom	8:56					
Equipment Number	T244					
Location	Trinidad					
Recorded By	Worley					
Witnessed By						
Borehole Record						Tubing Record
Run Number	Bit	From	To	Size	Weight	From To
Casing Record	Size		Wgt/Ft		Top	Bottom
Surface String	12 3/4"				00	18'
Prot. String						
Production String	8 5/8"				00	1193'
Liner						

<<< Fold Here >>>

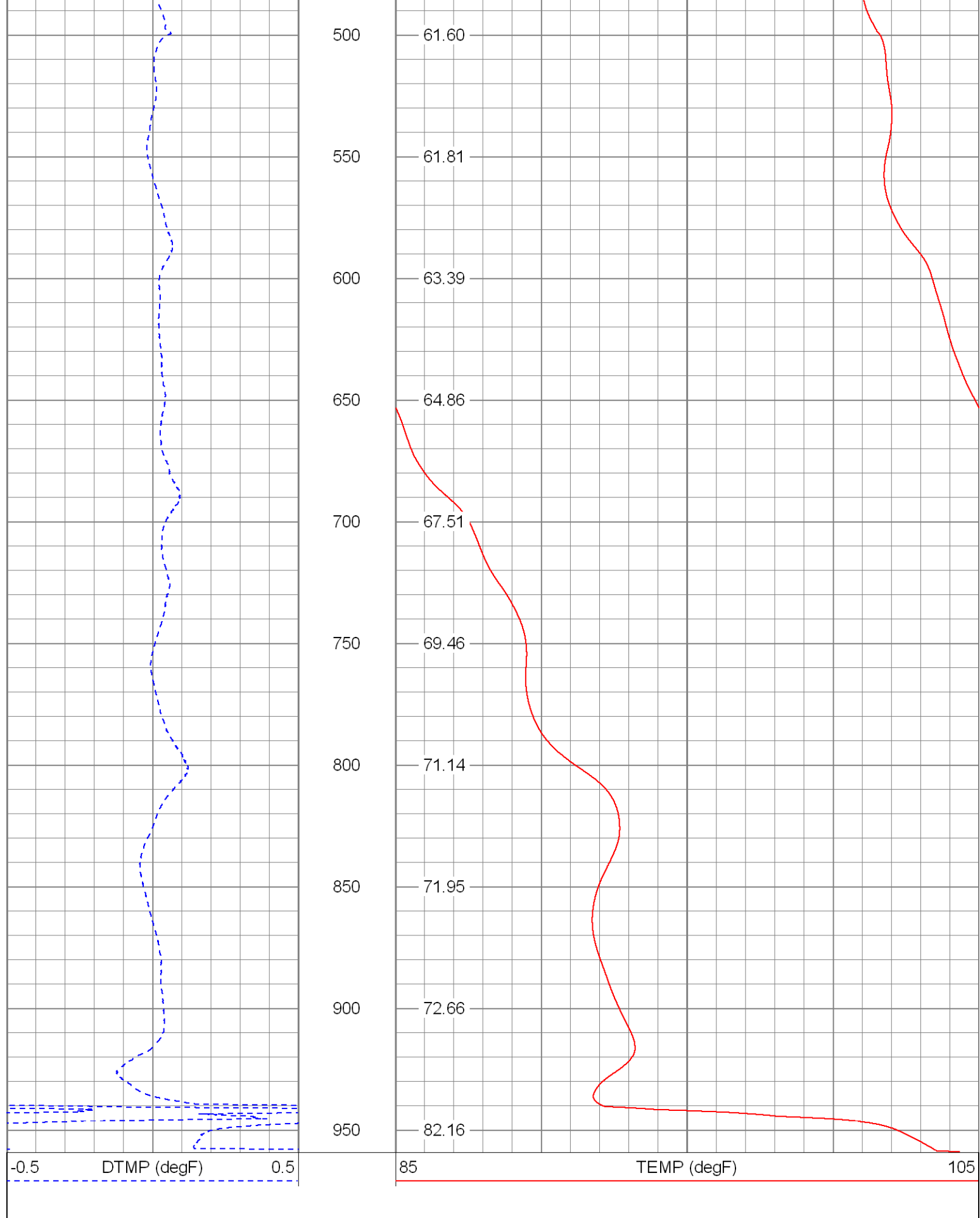
All interpretations are opinions based on inferences from electrical or other measurements and we cannot and do not guarantee the accuracy or correctness of any interpretation, and we shall not, except in the case of gross or willful negligence on our part, be liable or responsible for any loss, costs, damages, or expenses incurred or sustained by anyone resulting from any interpretation made by any of our officers, agents or employees. These interpretations are also subject to our general terms and conditions set out in our current Price Schedule.

Comments

4 Miles Past Weston On Hwy 12. Right Thru Gate, Stay On Main Rd To T, Left, Stay Left Up Hill To Locatio

Cement Was 12 Hours Old At Time Of Log.





### Temperature Calibration Report

Serial Number: 1  
Tool Model: C

Performed: Thu Mar 11 09:49:24 2004

	Reference	Reading
--	-----------	---------

Low Reference:	56.00 degF	590.26 cps
High Reference:	163.00 degF	1683.31cps

Gain:	0.10
Offset:	-1.78
Delta Spacing	2