

Patterson

**CEMENT BOND
GAMMA RAY**

Company XTO Energy Inc.
Well Golden Eagle 19-11
Field Purgatorie River
County Las Animas
State CO

Company XTO Energy Inc.
Well Golden Eagle 19-11
Field Purgatorie River
County Las Animas
State CO

Location: API # : 05 071 08696 00

SEC 19 TWP 33S RGE 67W

Permanent Datum Ground Level Elevation 7236'
Log Measured From Ground Level
Drilling Measured From Ground Level

Elevation

K.B. -----
D.F. -----
G.L. 7236'

Date 3/24/06

Run Number	one
Depth Driller	1950'
Depth Logger	1863'
Bottom Logged Interval	1859'
Top Log Interval	Surf.
Open Hole Size	7 7/8"
Type Fluid	water
Density / Viscosity	///
Max. Recorded Temp.	///
Estimated Cement Top	
Time Well Ready	4:16
Time Logger on Bottom	4:22
Equipment Number	T244
Location	Trinidad
Recorded By	Worley
Witnessed By	

Borehole Record		Tubing Record					
Run Number	Bit	From	To	Size	Weight	From	To

Casing Record	Size	Wgt/Ft	Top	Bottom
Surface String	8 5/8"		00	319'
Prot. String				
Production String	5 1/2"		00	NA
Liner				

<<< Fold Here >>>

All interpretations are opinions based on inferences from electrical or other measurements and we cannot and do not guarantee the accuracy or correctness of any interpretation, and we shall not, except in the case of gross or willful negligence on our part, be liable or responsible for any loss, costs, damages, or expenses incurred or sustained by anyone resulting from any interpretation made by any of our officers, agents or employees. These interpretations are also subject to our general terms and conditions set out in our current Price Schedule.

Comments

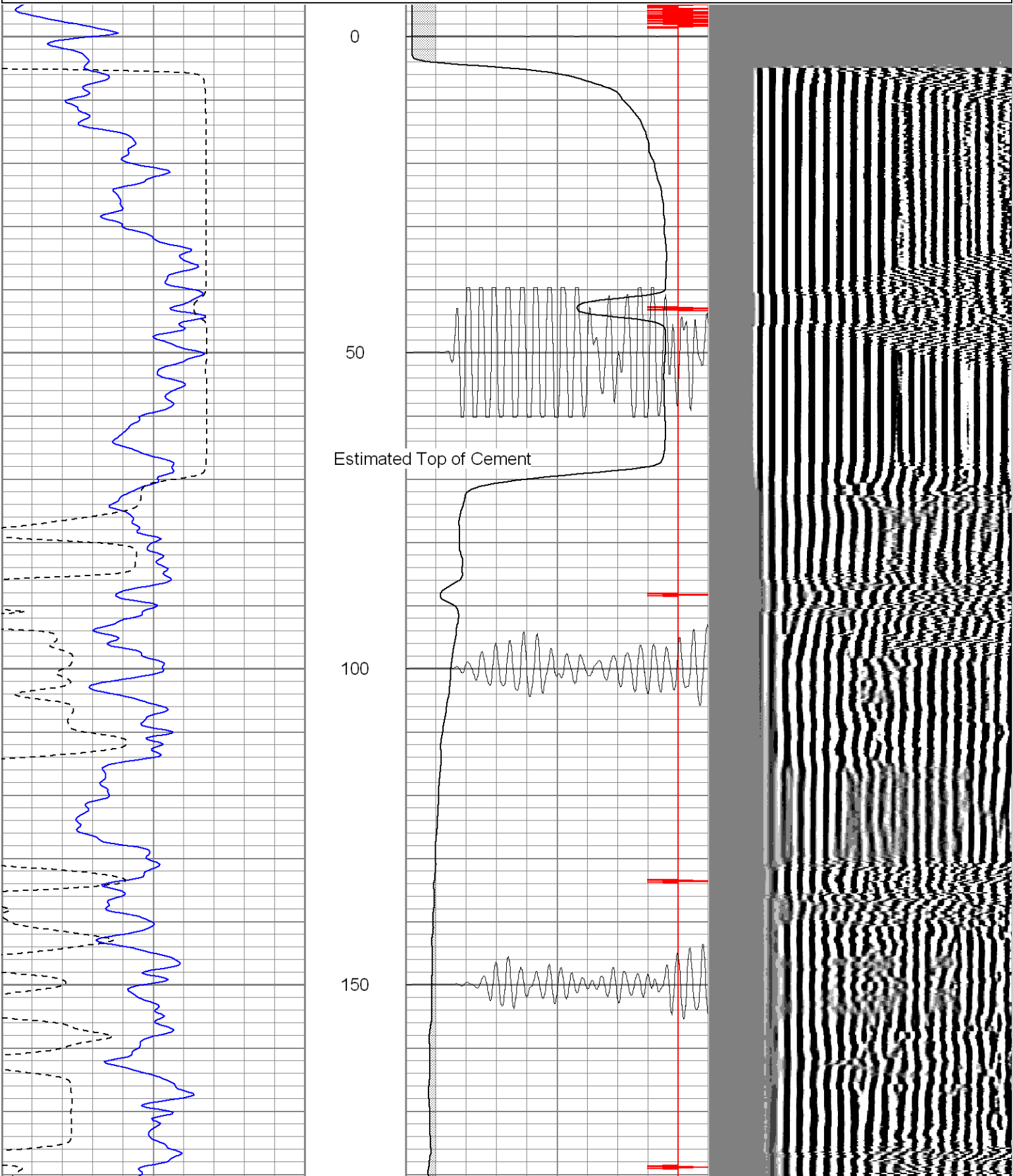
4 Miles Past Weston To Bosque Entrance Go .2 Miles And Turn Right
On Old Rail Track, Go 1.5 Miles And Turn Right To Location.

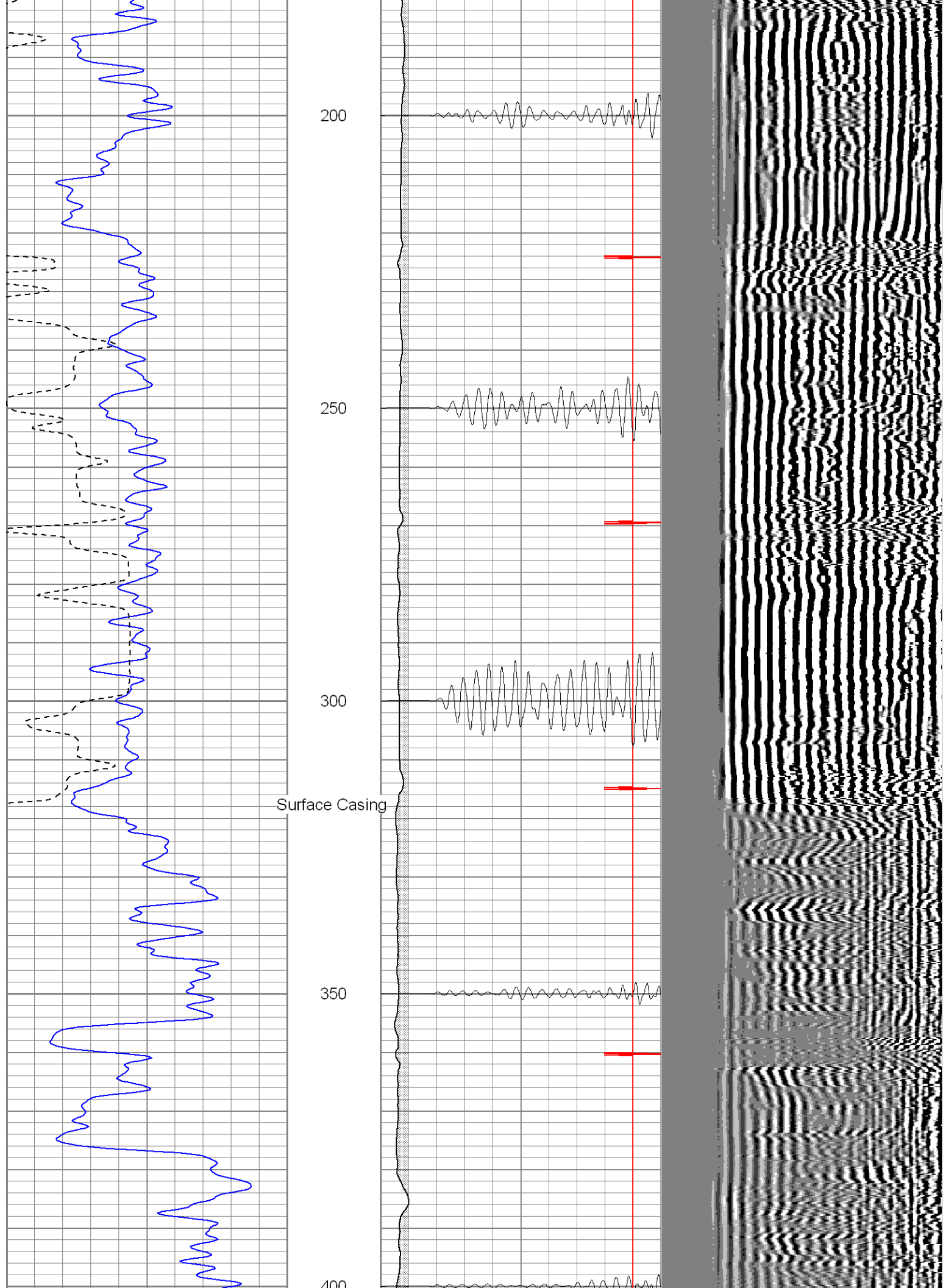
Patterson

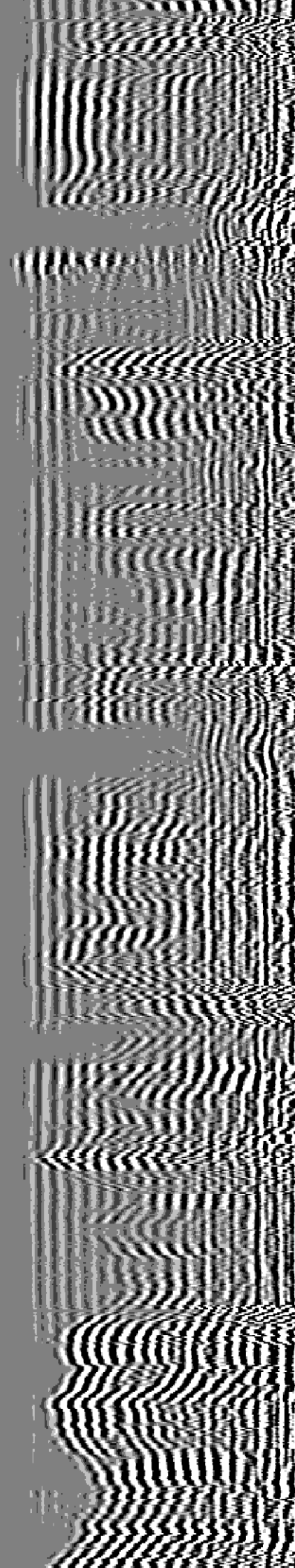
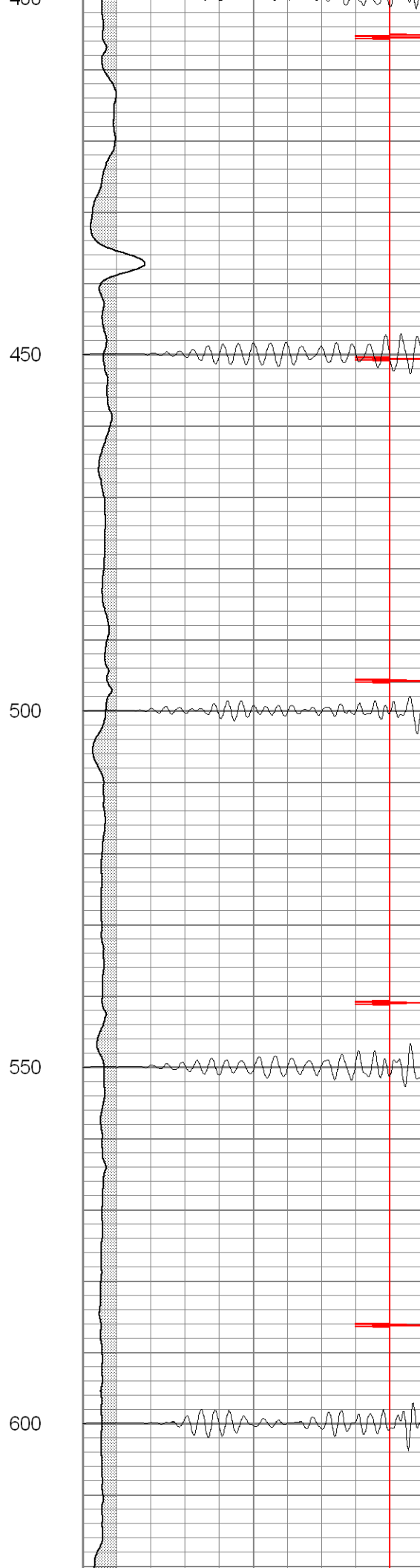
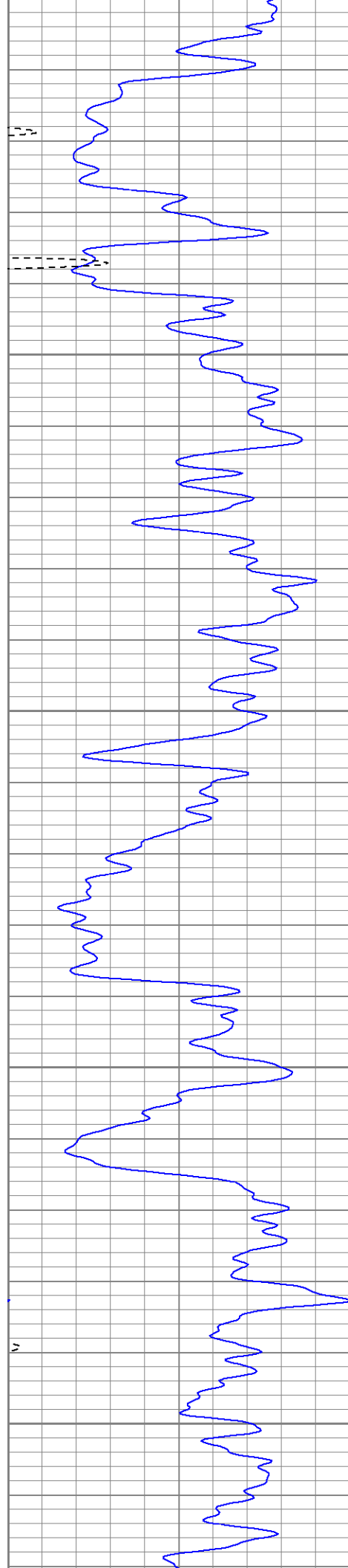
Main Pass

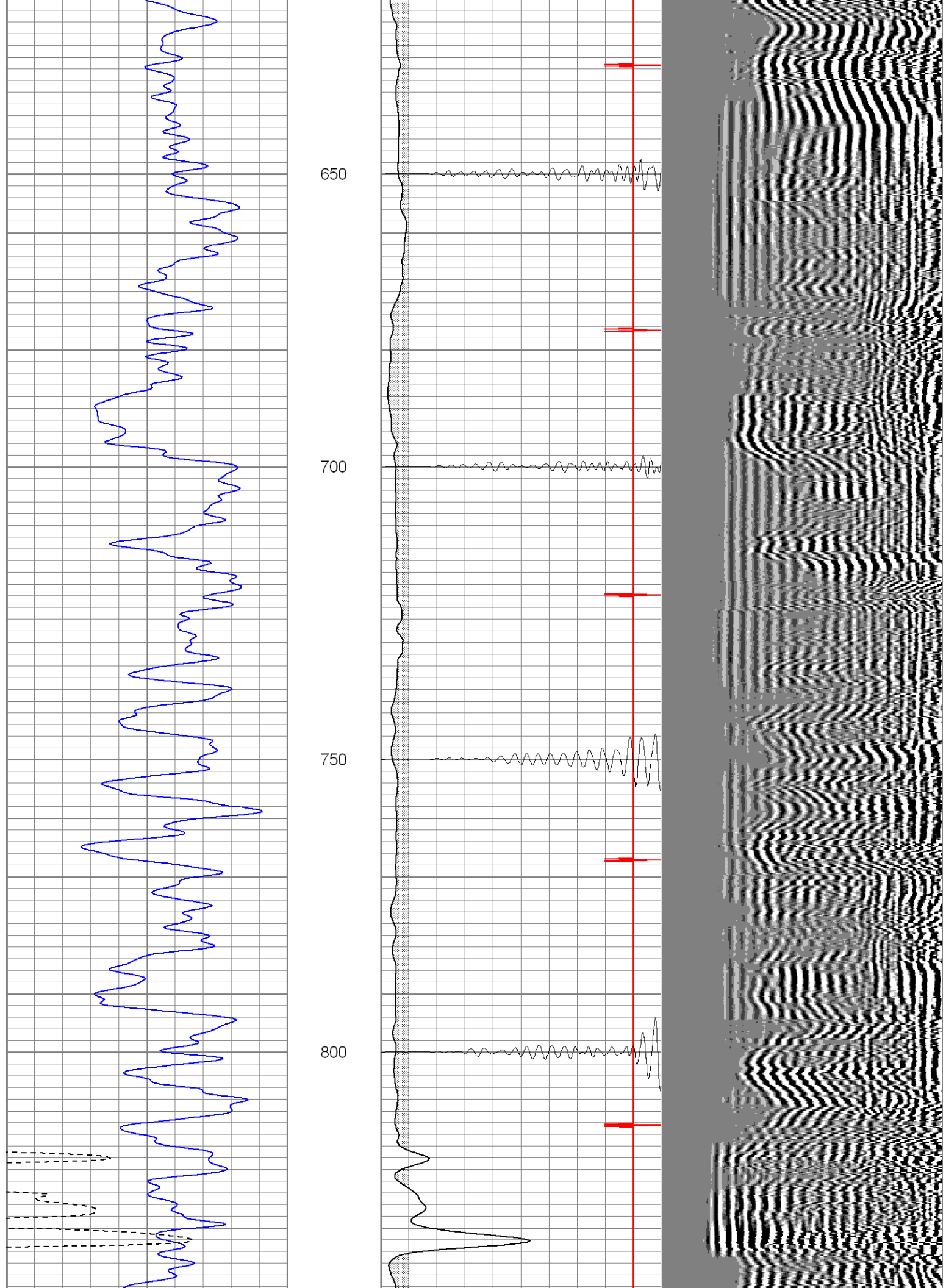
Database File: ge19-11b32406.db
Dataset Pathname: pass3
Presentation Format: cblrt
Dataset Creation: Fri Mar 24 16:29:29 2006 by Log Warrior 7.0 STD Cas
Charted by: Depth in Feet scaled 1:240

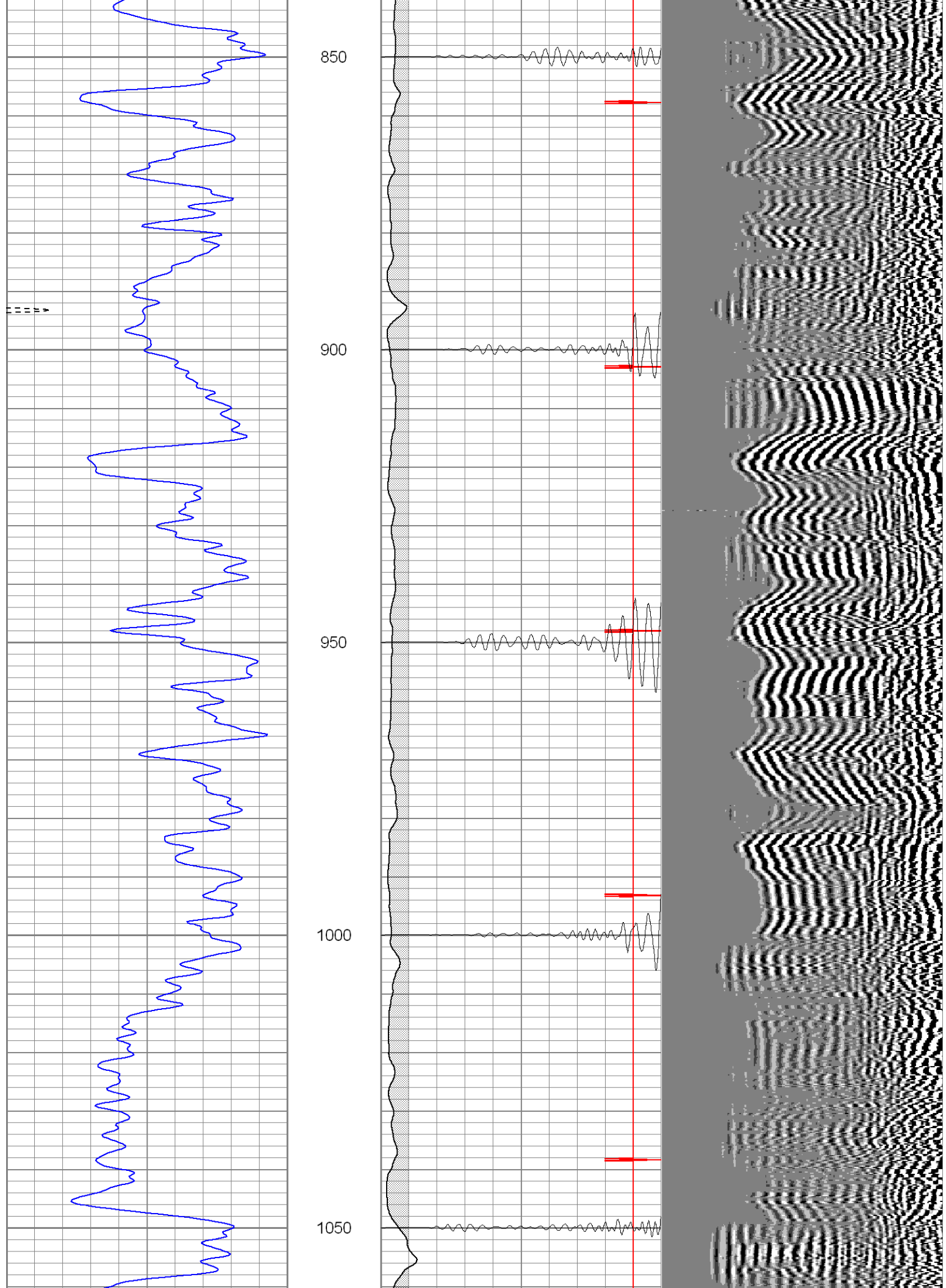
0	GR (GAPI)	200	0	AMP3 (mV)	100	200	Variable Density	1200
400	TT3 (usec)	200	18	CCL	-2			
			200	CBL5	1200			

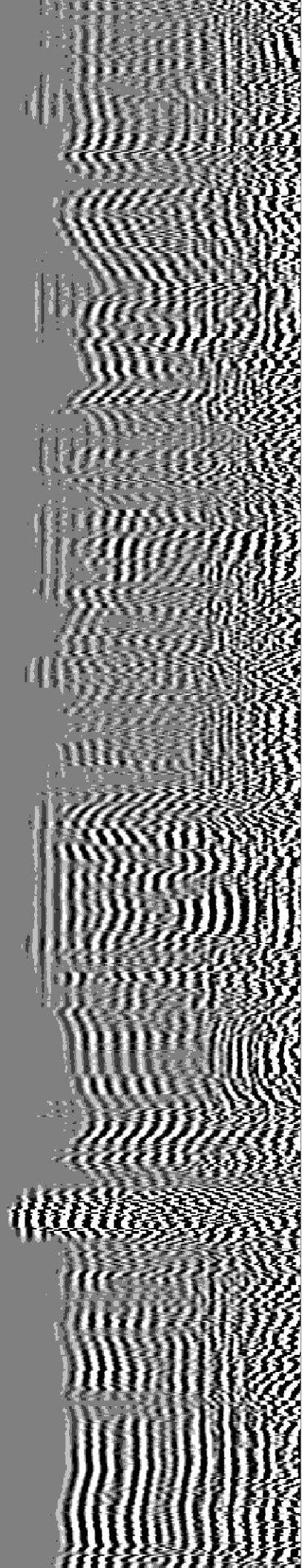
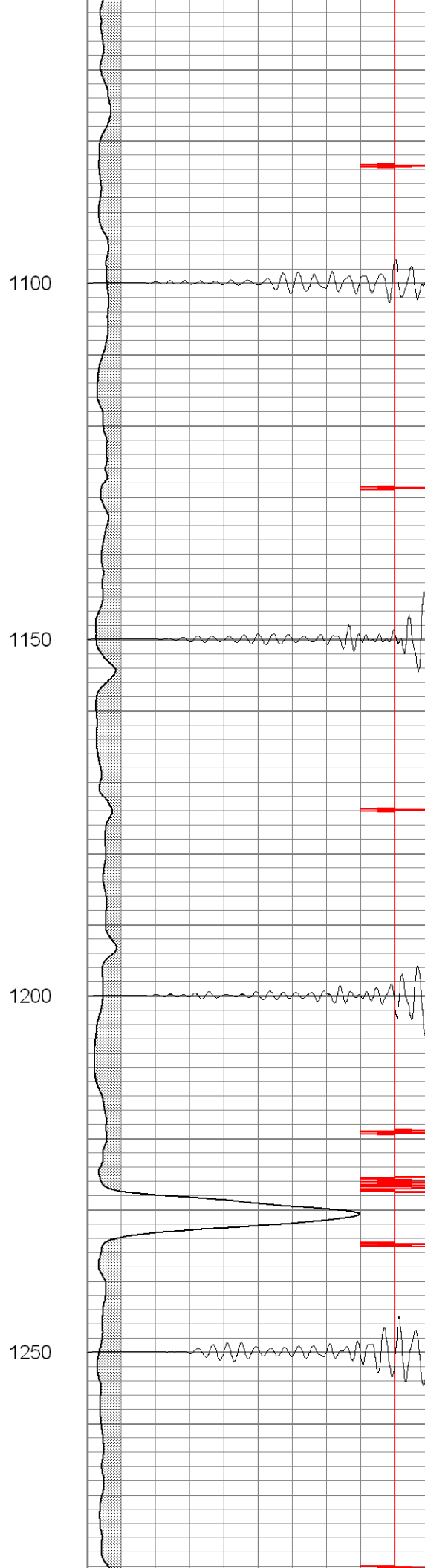
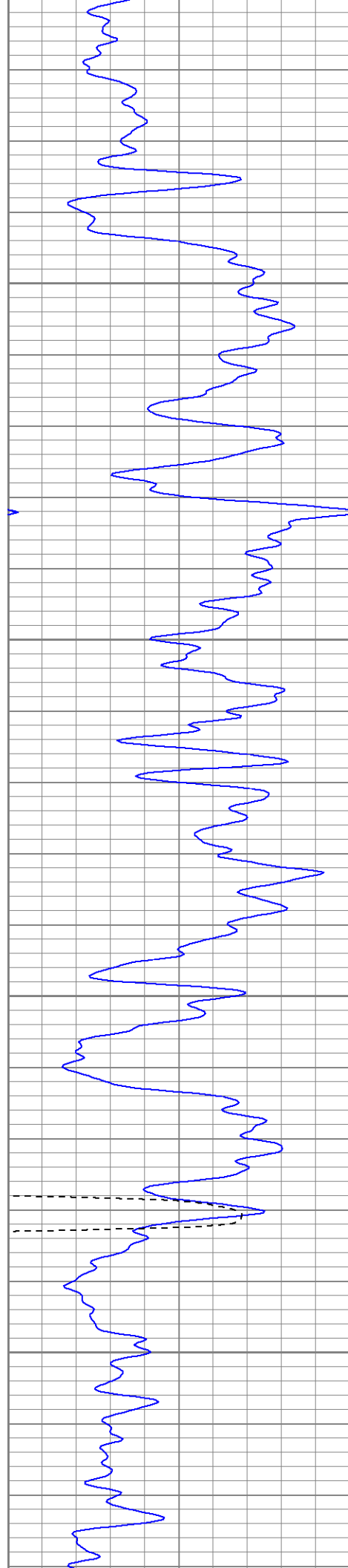


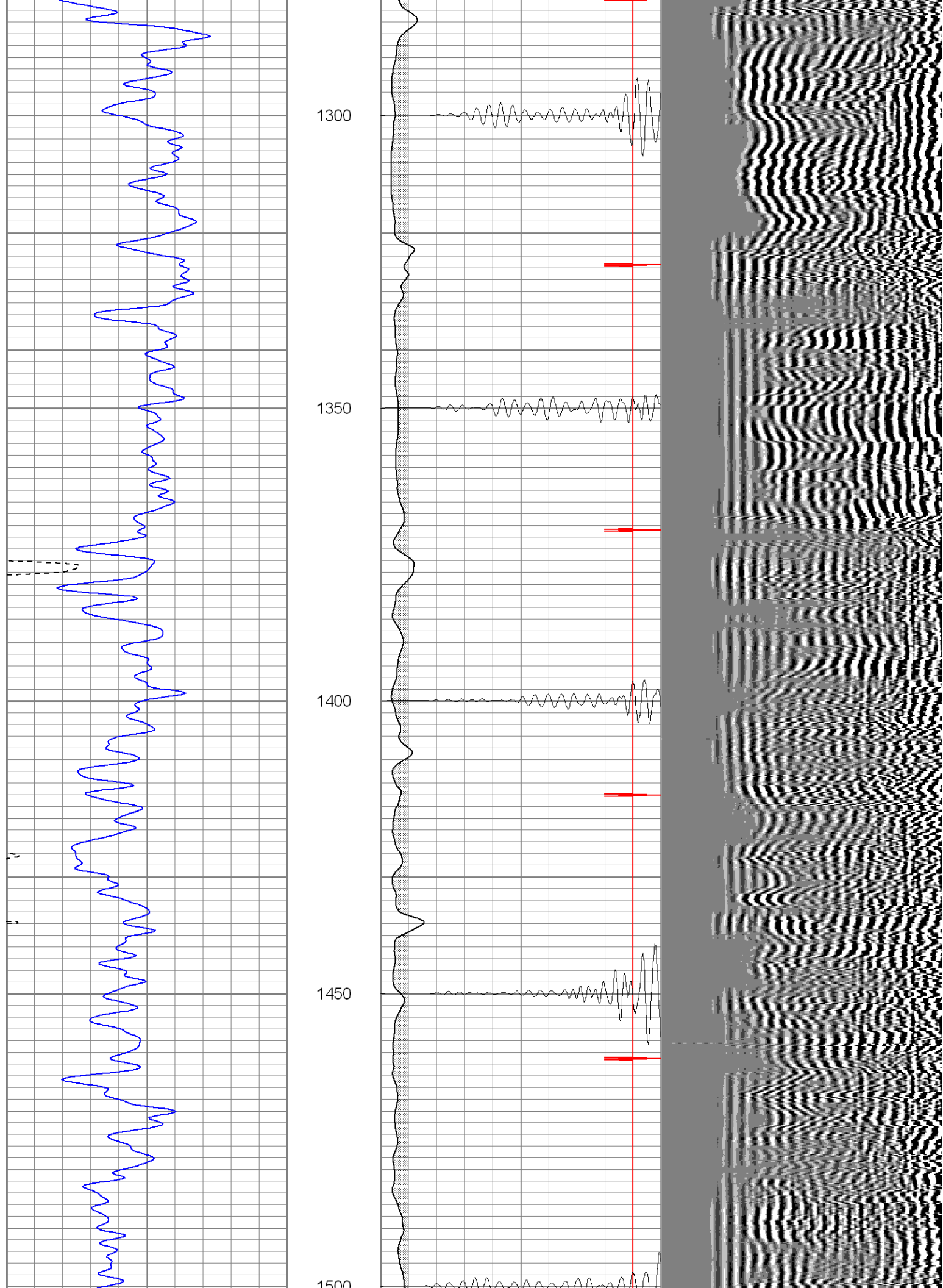


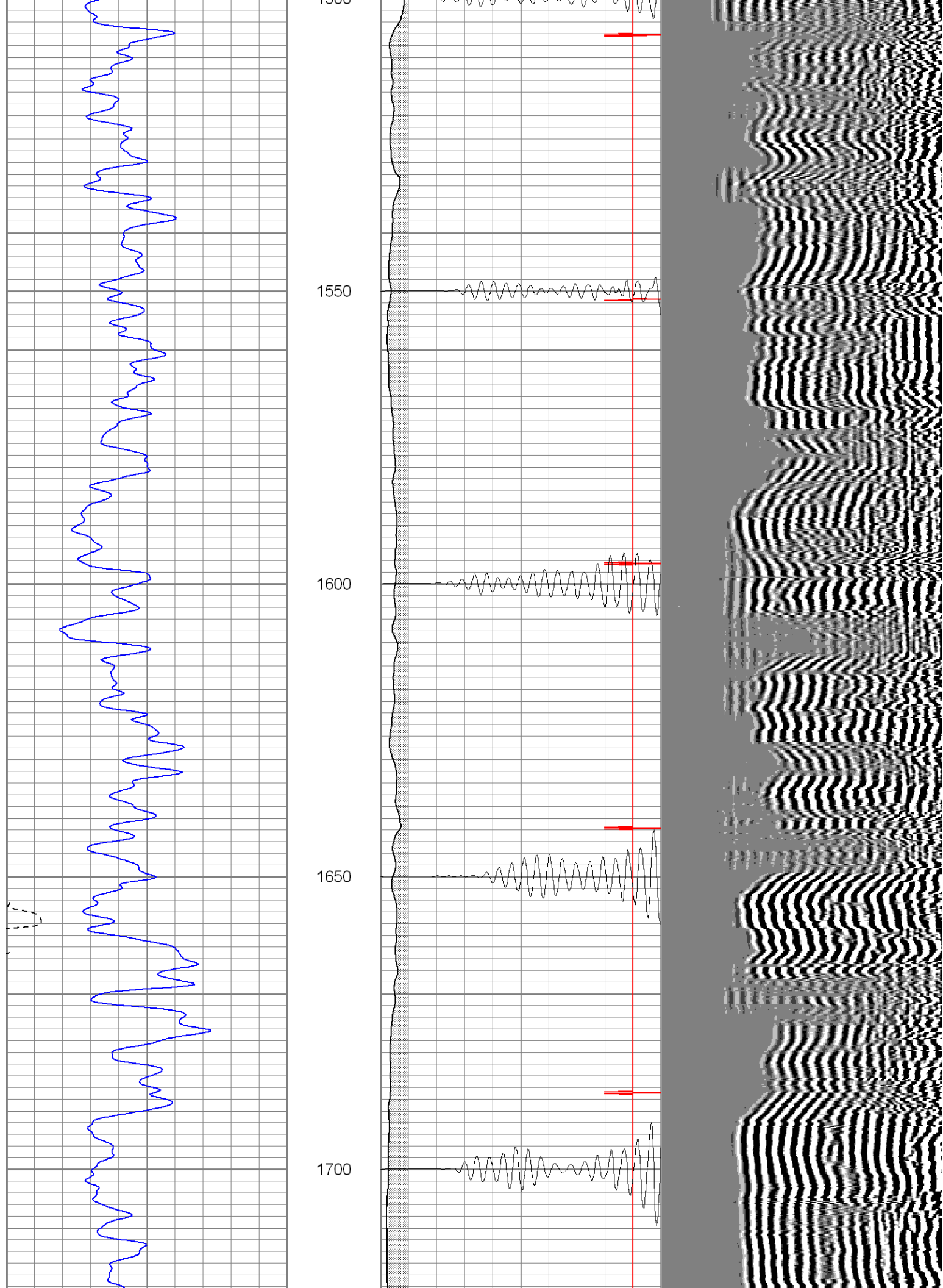


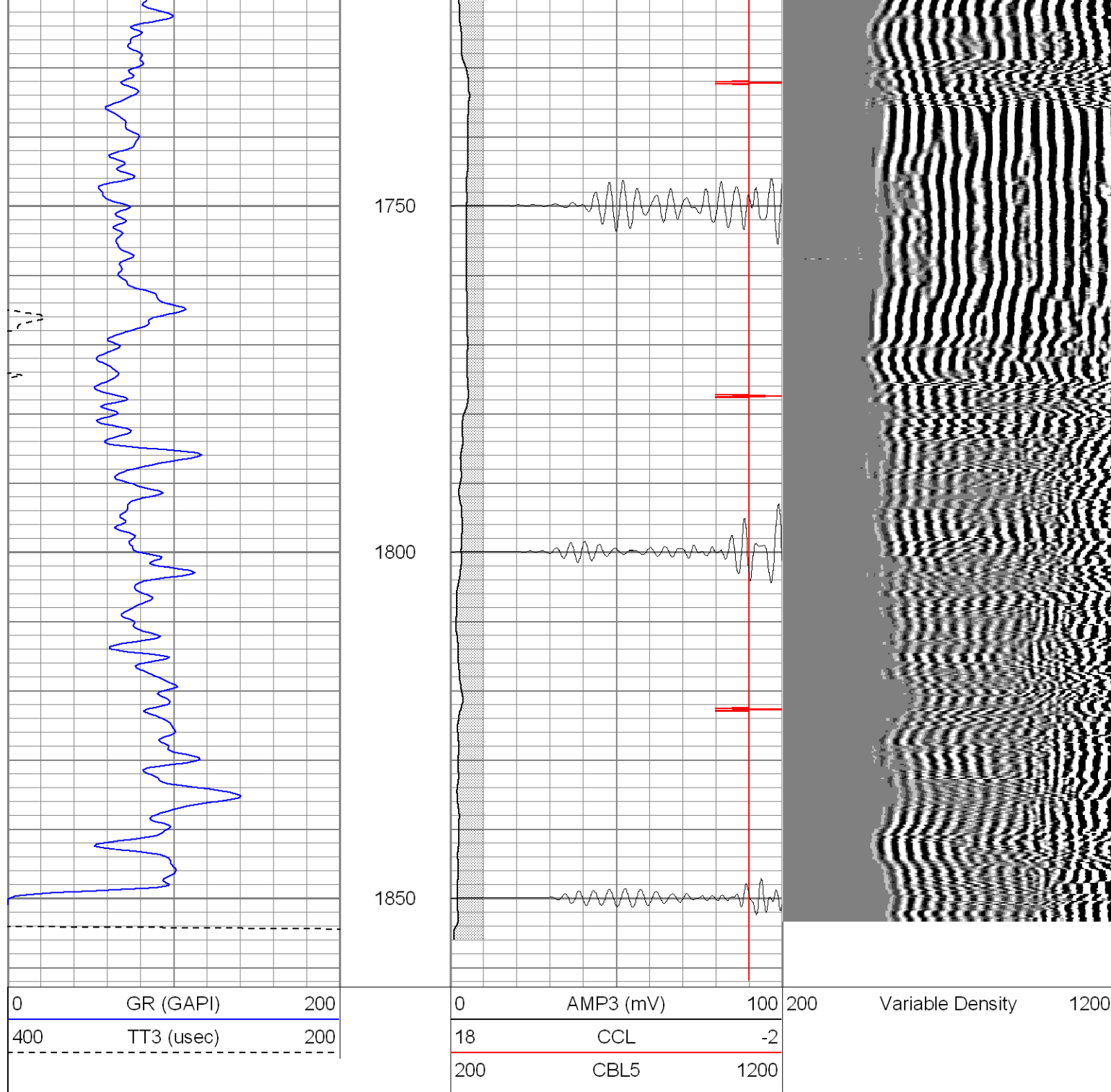








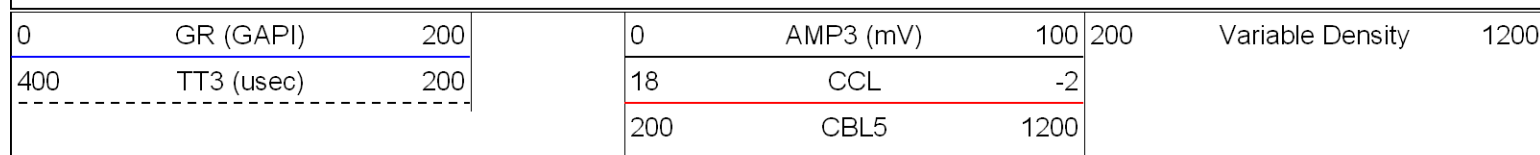


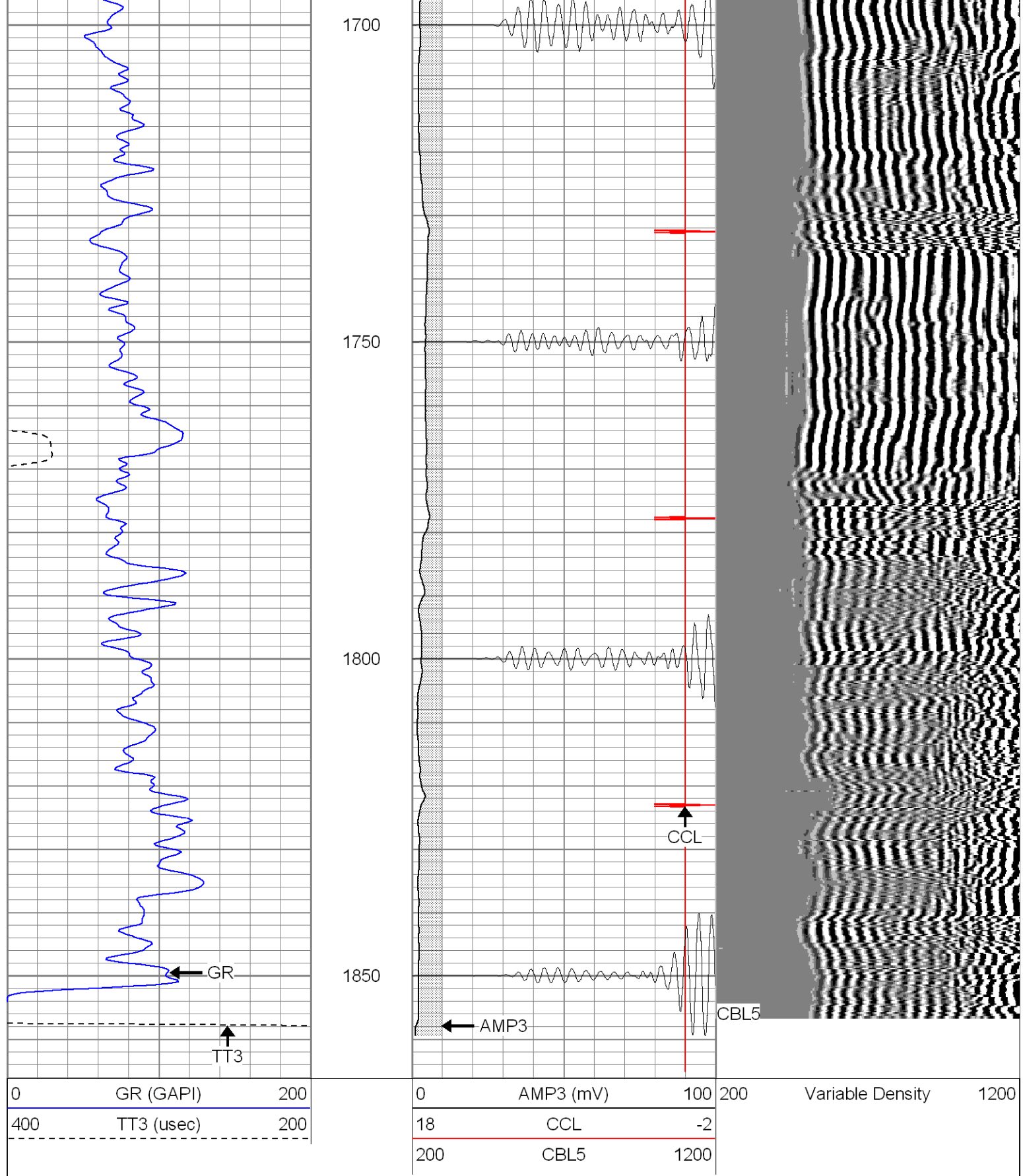


Patterson

Repeat Section

Database File: ge19-11b32406.db
Dataset Pathname: pass1
Presentation Format: cblrt
Dataset Creation: Fri Mar 24 16:23:40 2006 by Log Warrior 7.0 STD Cas
Charted by: Depth in Feet scaled 1:240





Cement Bond Log Calibration Report

Serial Number: Titan5
Tool Model: 2
Performed: Fri Mar 24 16:19:24 2006

Depth: 2158.27 ft
Casing Diameter: 5.5 in

	3' Spacing	5' Spacing	
Signal Zero:	0	0	mV
Calibrated Amplitude:	85	85	mV
Reading at Signal Zero:	-0.02	0	V
Reading in Free Pipe:	1.6	1.5	V
Gain:	52.4691	56.6667	
Offset:	1.04938	0	

Gamma Ray Calibration Report			
Serial Number:	Titan5		
Tool Model:	T2		
Performed:	Mon Jan 30 08:59:20 2006		
Calibrator Value:	1.0	GAPI	
Background Reading:	0.0	cps	
Calibrator Reading:	1.0	cps	
Sensitivity:	1.2000	GAPI/cps	