

BLANCO

Geological Services LLC

Scale 1:240 (5"=100') Imperial

Well Name: Corazon 13-10
Location: NW/SW Sec 10 , T33S, R66W
Licence Number: 05-071-08613
Spud Date: 11/27/05
Surface Coordinates: 2510' FSL 439' FWL

Region: Purgatoire River
Drilling Completed: 11/30/05

Bottom Hole Coordinates:

Ground Elevation (ft): 7165' K.B. Elevation (ft): 7170'
Logged Interval (ft): 515' To: 1890' Total Depth (ft): 1890'
Formation: Raton/Vermejo/Trinidad
Type of Drilling Fluid: Air/Mist

Printed by MUD.LOG from WellSight Systems 1-800-447-1534 www.WellSight.com

CORE

Contractor:
Core #:
Formation:
Core Interval: From: Cut:
 To: Recovered:

Bit type:
Size:
Coring Time:

OPERATOR

Company: Pioneer Natural Resources USA Inc.
Address: 1401 17th Street Suite 1200
Denver CO 80202

GEOLOGIST

Name: JoaQuin Gonzales/LeJon Gutierrez
Company: BLANCO Geological Services LLC
Address: 806 Robinson
Trinidad CO 81020
(719) 846-6433

Rig

Pense Drilling Rig #22

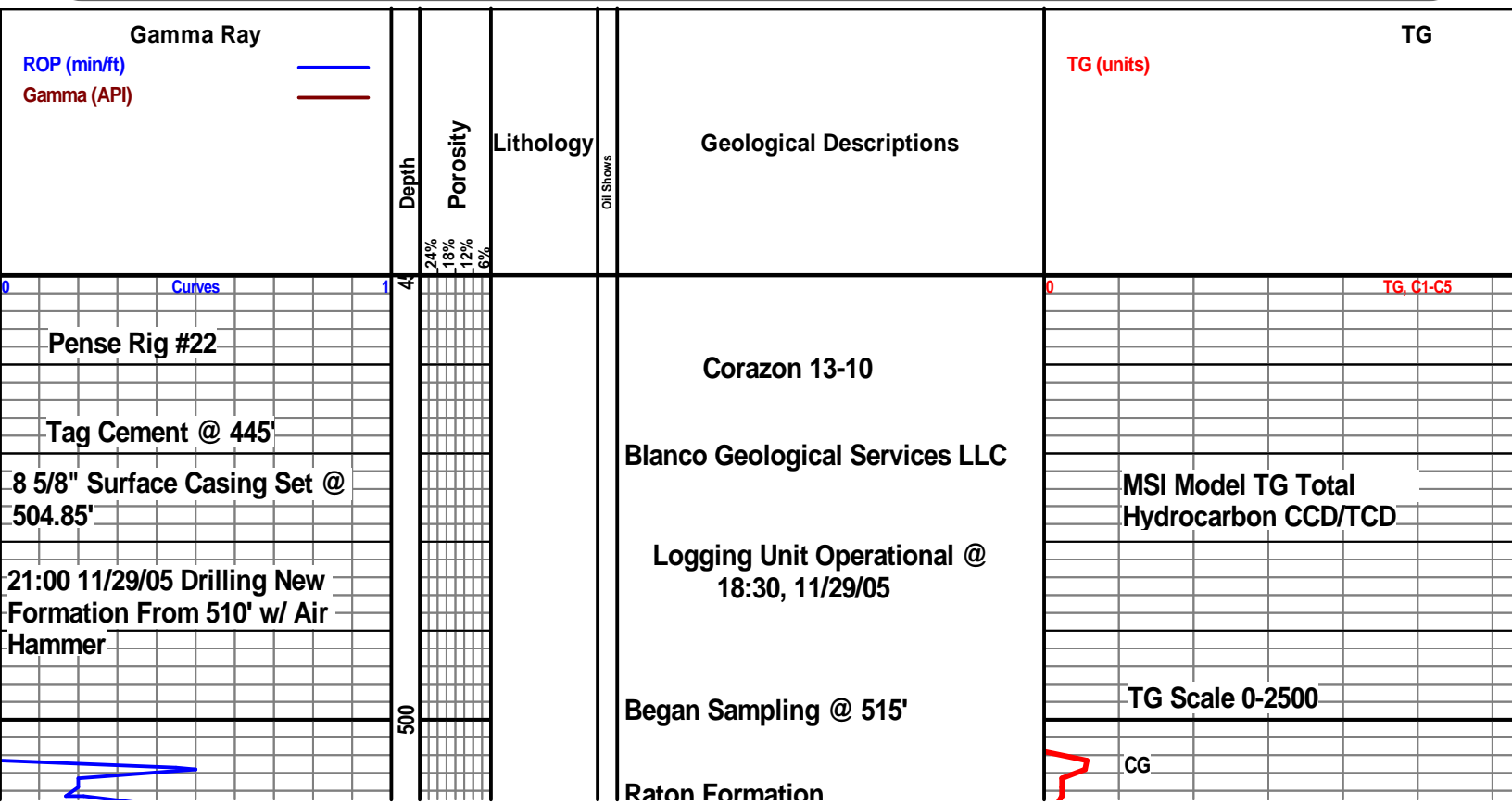
Comments

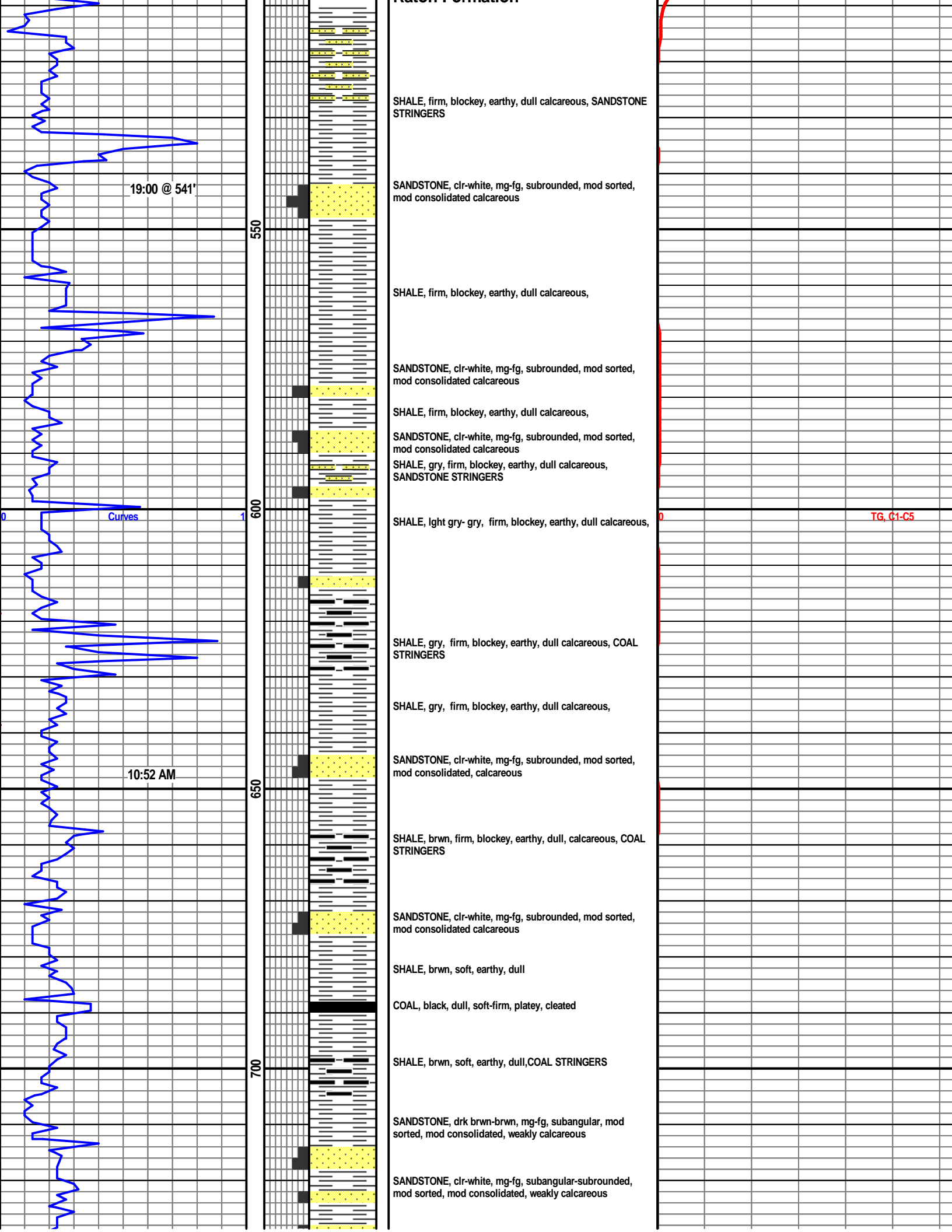
8 5/8" #24 Surface Casing set to 504.85'

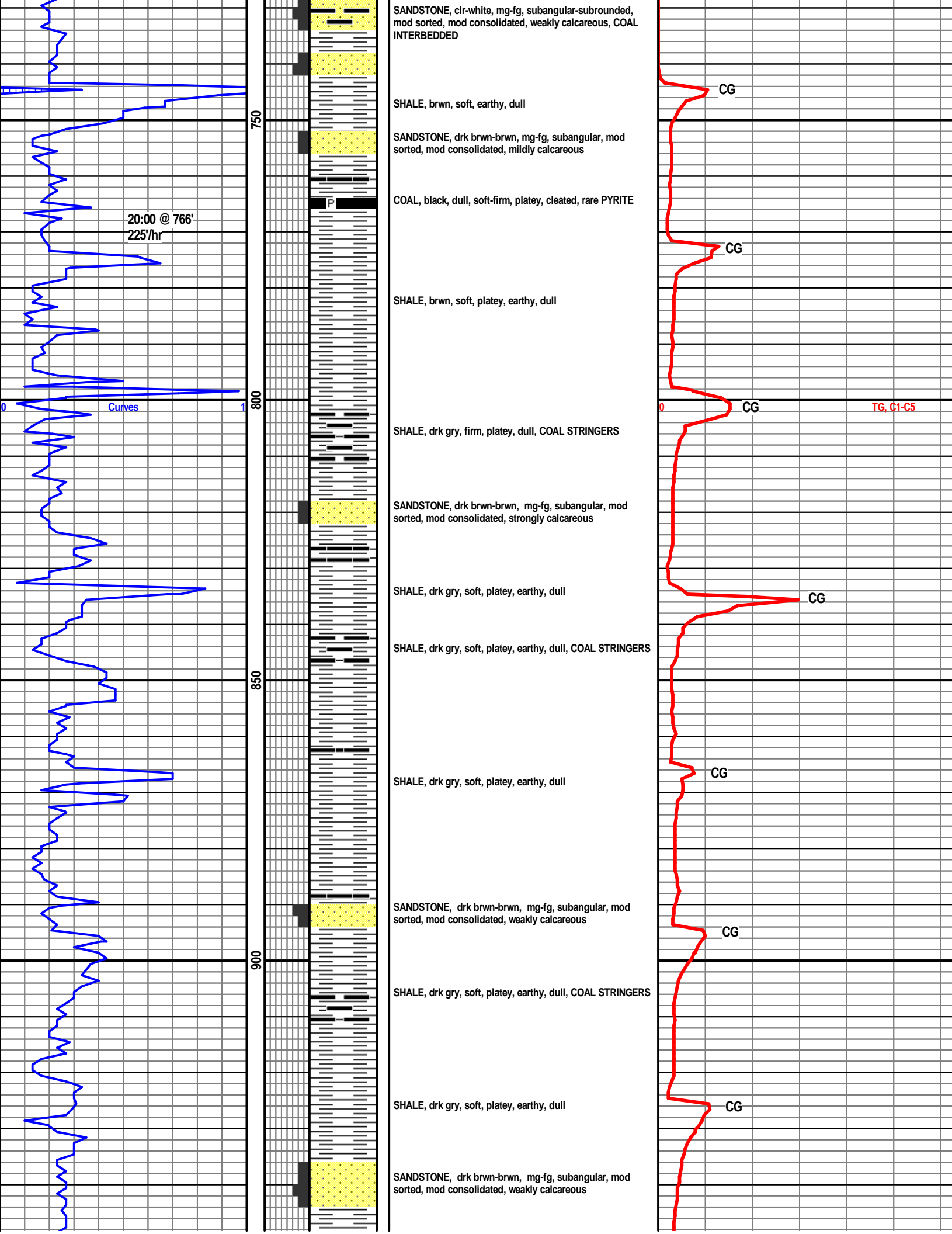
Shgy
Sltst
Ss
Till

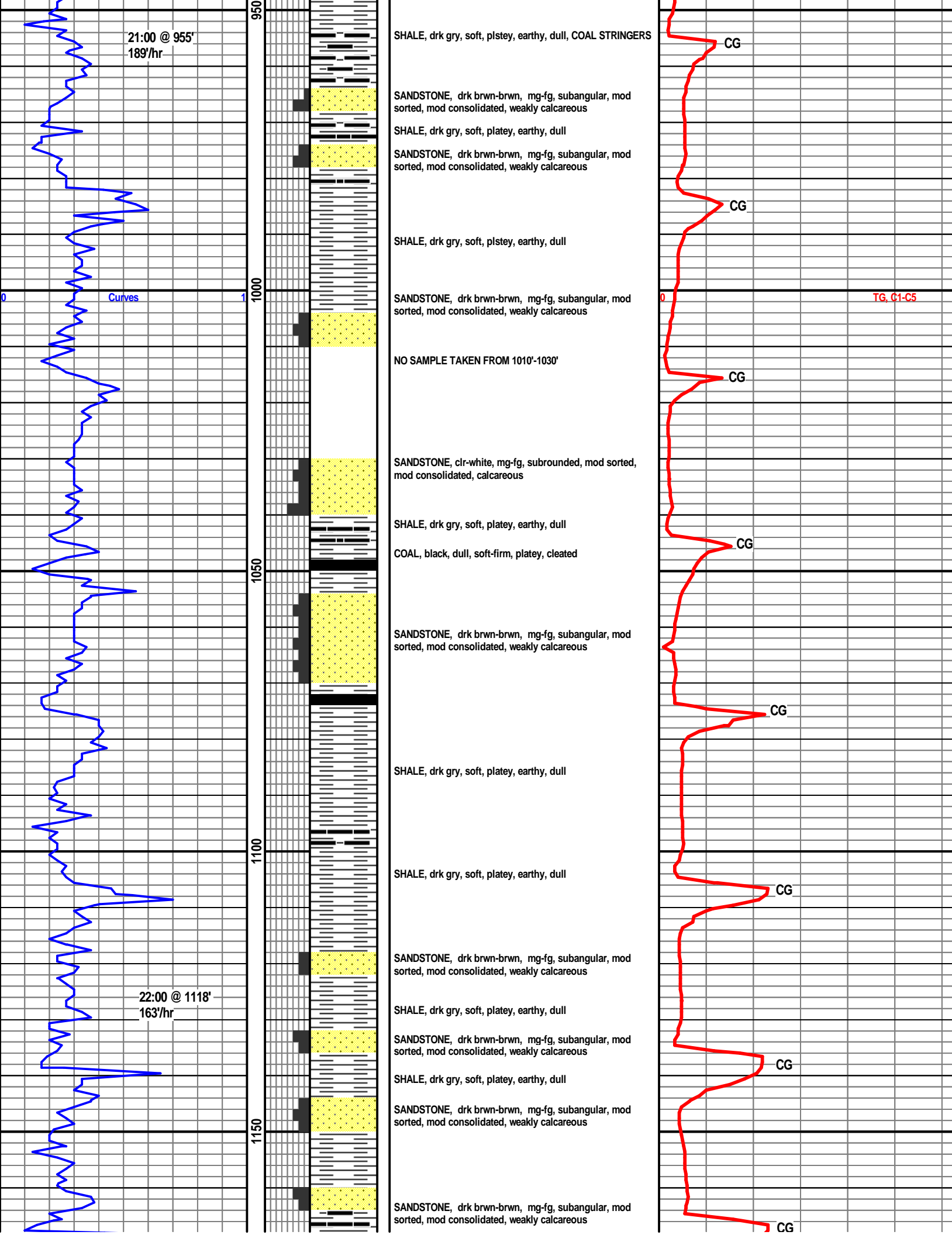
BS	Boundst
C	Chalky
CX	CryxIn
E	Earthy
FX	FinexIn
GS	Grainst
L	Lithogr
MX	MicroxIn
MS	Mudst
PS	Packst
WS	Wackest

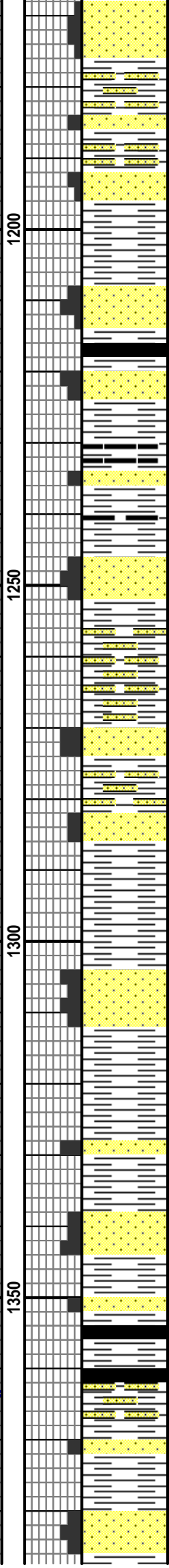
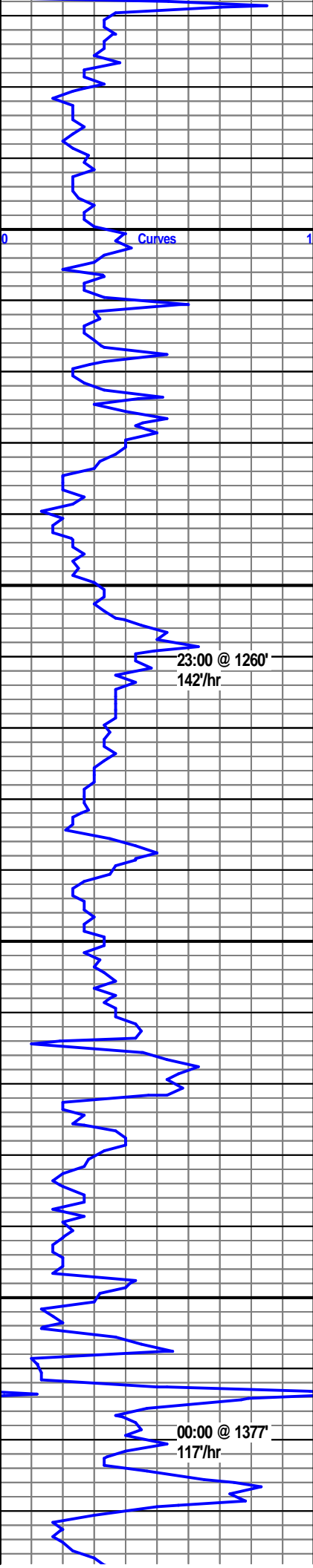
Rft
Sidewall
Srftcsg











SHALE, drk gry, soft, platey, earthy, dull,SANDSTONE STRINGERS

SHALE, drk gry, soft, platey, earthy, dull,SANDSTONE STRINGERS

SANDSTONE, drk brwn-brwn, mg-fg, subangular, mod sorted, mod consolidated, weakly calcareous

SHALE, gry, soft, platey, earthy, dull

SANDSTONE, drk brwn-brwn, mg-fg, subangular, mod sorted, mod consolidated, weakly calcareous, trace Coal

SANDSTONE, drk brwn-brwn, mg-fg, subangular, mod sorted, mod consolidated, weakly calcareous

SHALE, gry, soft, platey, earthy, dull

SHALE, gry, soft, platey, earthy, dull

SANDSTONE, drk brwn-brwn, mg-fg, subangular, mod sorted, mod consolidated, weakly calcareous

SHALE, drk gry, soft, platey, earthy, dull,SANDSTONE STRINGERS

SANDSTONE, drk brwn-brwn, mg-fg, subangular, mod sorted, mod consolidated, weakly calcareous

SHALE, drk gry, soft, platey, earthy, dull,SANDSTONE STRINGERS

SANDSTONE, drk brwn-brwn, mg-fg, subangular, mod sorted, mod consolidated, weakly calcareous

SHALE, gry, soft, platey, earthy, dull

SANDSTONE, clr-white, fg, subrounded, well sorted, mod consolidated, weakly calcareous

SHALE, drk gry-gry, soft, platey, earthy, dull

SHALE, drk gry-gry, soft, platey, earthy, dull

SANDSTONE, clr-white, fg, subrounded, well sorted, mod consolidated, weakly calcareous

SANDSTONE, clr-white, fg, subrounded, well sorted, mod consolidated, weakly calcareous

COAL, black, dull, firm, platey, cleated

SHALE, drk gry, soft, platey, earthy, dull,SANDSTONE STRINGERS

11/30/05

SHALE, drk gry-gry, soft, platey, earthy, dull

SANDSTONE, clr-white, fg, subrounded, well sorted, mod consolidated, weakly calcareous

