



SUPERIOR
Black Lick, Pa.
Mercer, Pa.
Wooster, Oh.
Cleveland, Ok.
Trinidad, Co.

DUAL INDUCTION LOG

Company XTO Energy Inc.
Well Golden Eagle 29-11
Field Purgatoire River
County Las Animas State Colorado

Location: API # : 05 071 09106 00

1673' FSL & 2145' FWL

SEC 29 TWP 33S RGE 67W

Permanent Datum Ground Level Elevation 7251'
Log Measured From Ground Level
Drilling Measured From Ground Level

Other Services
CDL
NEUTRON
Elevation
K.B. -----
D.F. -----
G.L. 7251'

Date 2-14-07

Run Number One

Depth Driller 1915'

Depth Logger 1918'

Bottom Logged Interval 1916'

Top Log Interval Surface Casing

Casing Driller 8 5/8" @ 738'

Casing Logger 738'

Bit Size 7 7/8"

Type Fluid in Hole Water

Density / Viscosity ///

pH / Fluid Loss ///

Source of Sample ///

Rm @ Meas. Temp ///

Rmf @ Meas. Temp ///

Rmc @ Meas. Temp ///

Source of Rmf / Rmc ///

Rm @ BHT ///

Time Circulation Stopped 3:00 A.M.

Time Logger on Bottom 5:00 A.M.

Maximum Recorded Temperature 91 DEG F

Equipment Number T0697

Location Trinidad

Recorded By M. Norton

Witnessed By Mr. Don Johnson

>>> Fold Here >>>

All interpretations are opinions based on inferences from electrical or other measurements and we cannot and do not guarantee the accuracy or correctness of any interpretation, and we shall not, except in the case of gross or willful negligence on our part, be liable or responsible for any loss, costs, damages, or expenses incurred or sustained by anyone resulting from any interpretation made by any of our officers, agents or employees. These interpretations are also subject to our general terms and conditions set out in our current Price Schedule.

Comments

Well Directions:

Second Bosque entrance four miles past Weston turn left,
at Y stay left on Ciruele Canyon, first drive thru location.



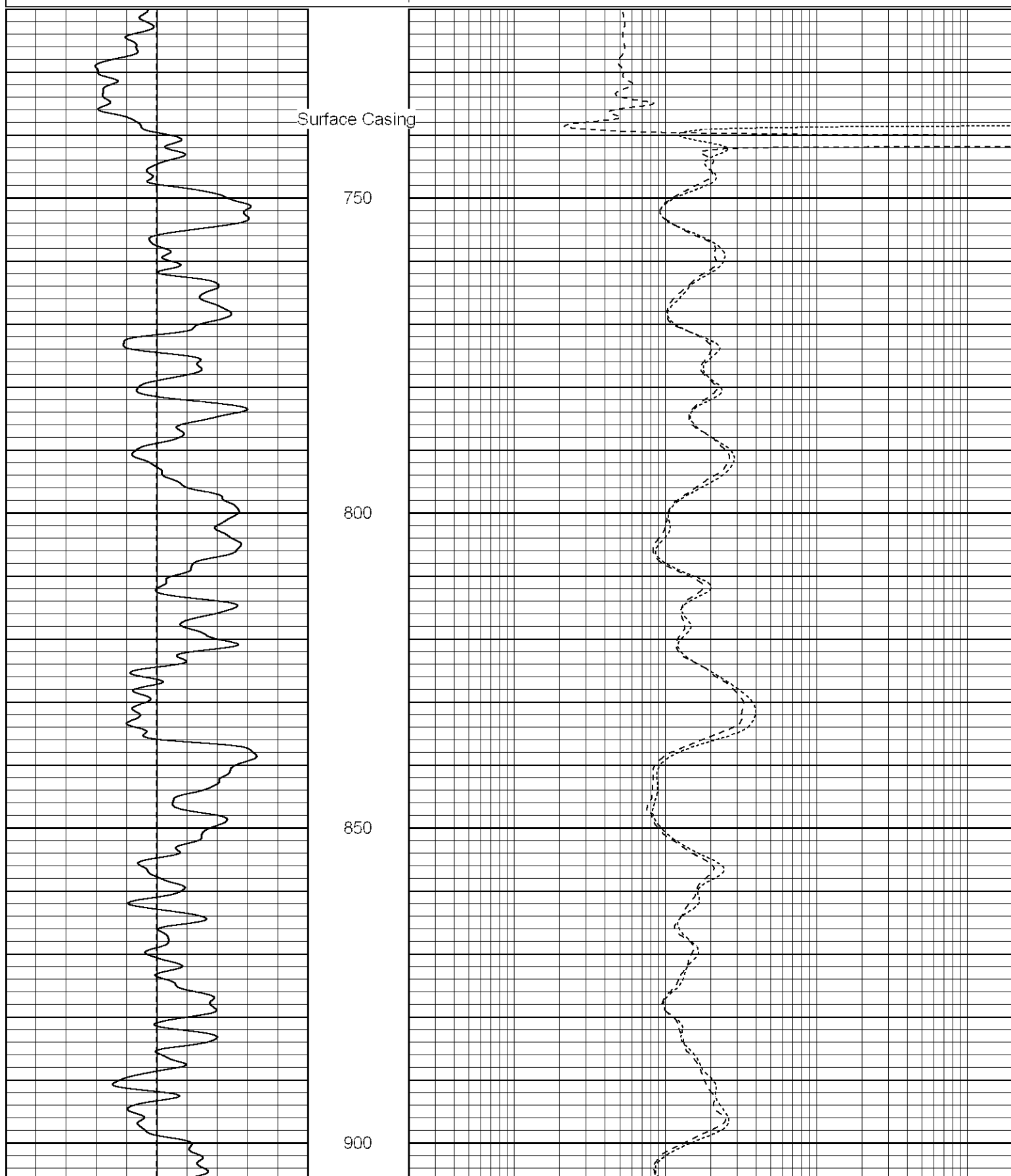
SUPERIOR
Black Lick, Pa.
Mercer, Pa.
Wooster, Oh.
Cleveland, Ok.
Trinidad, Co.

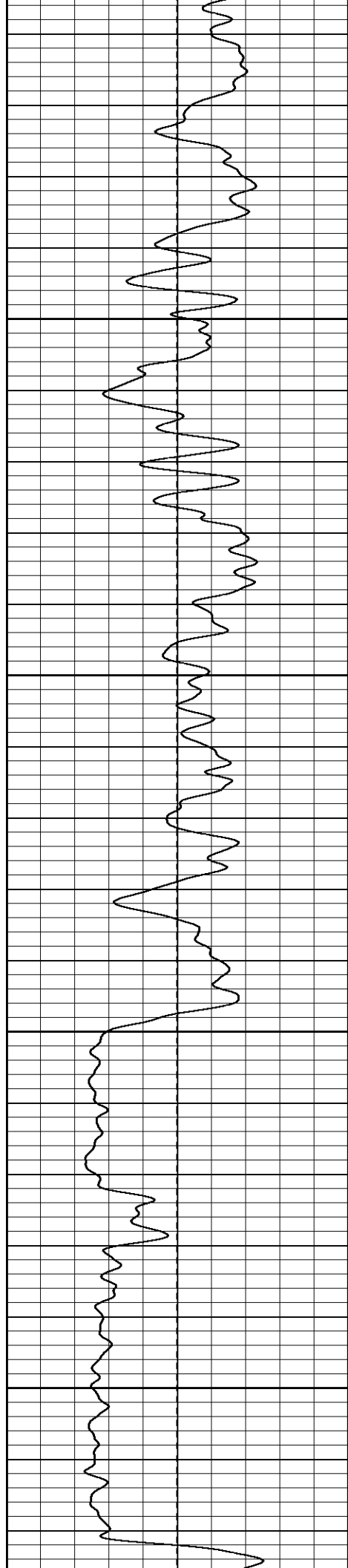
Main Pass

Database File: xtoge2911.db
Dataset Pathname: pass2.1
Presentation Format: dil
Dataset Creation: Wed Feb 14 06:38:34 2007 by Calc Open-Cased 061129
Charted by: Depth in Feet scaled 1:240

0	GR (GAPI)	200
-100	SP (mV)	100

0.2	RILM (Ohm-m)	2000
0.2	RILD (Ohm-m)	2000
0.2	RLL3 (Ohm-m)	2000



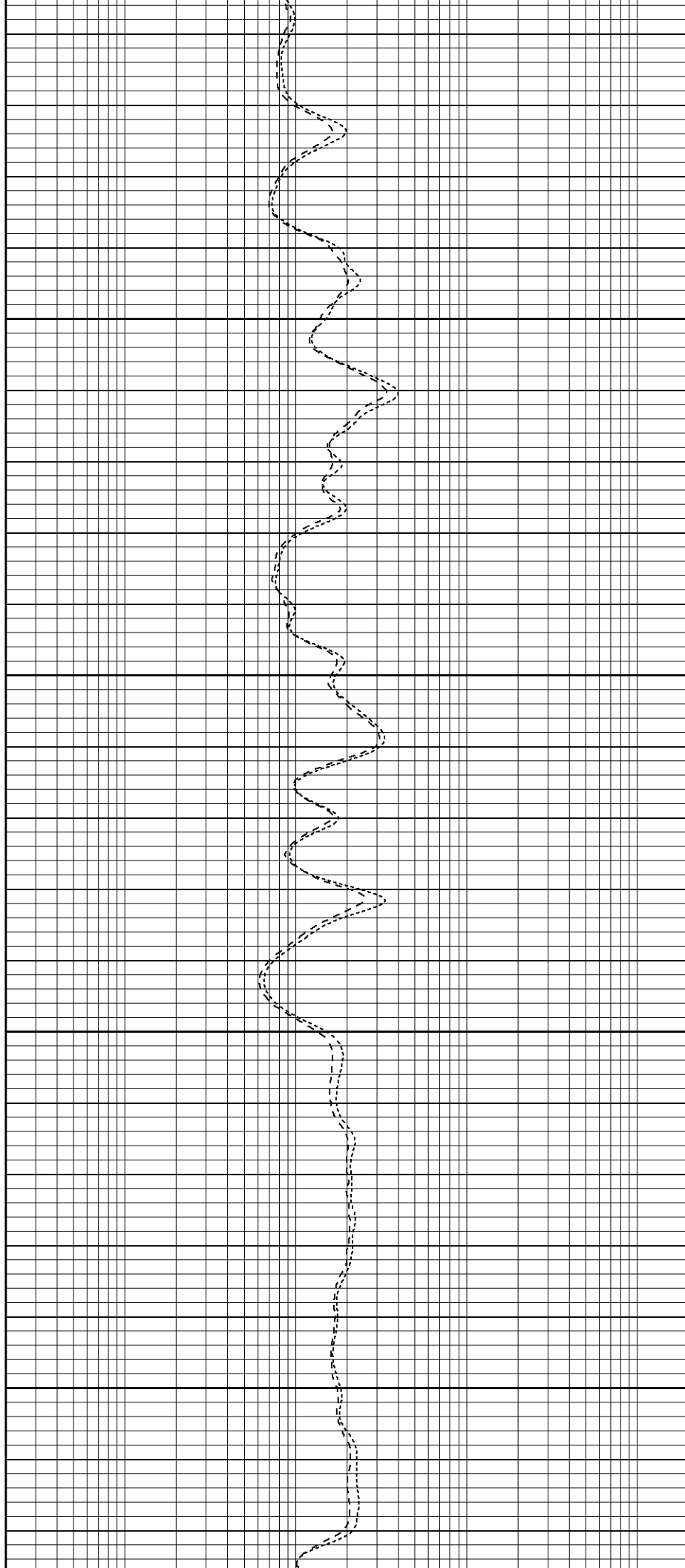


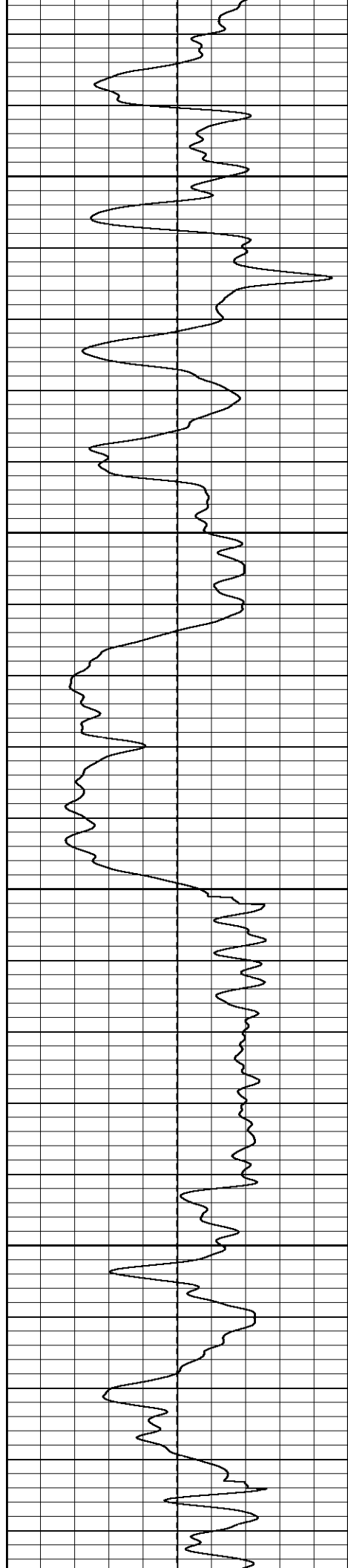
950

1000

1050

1100



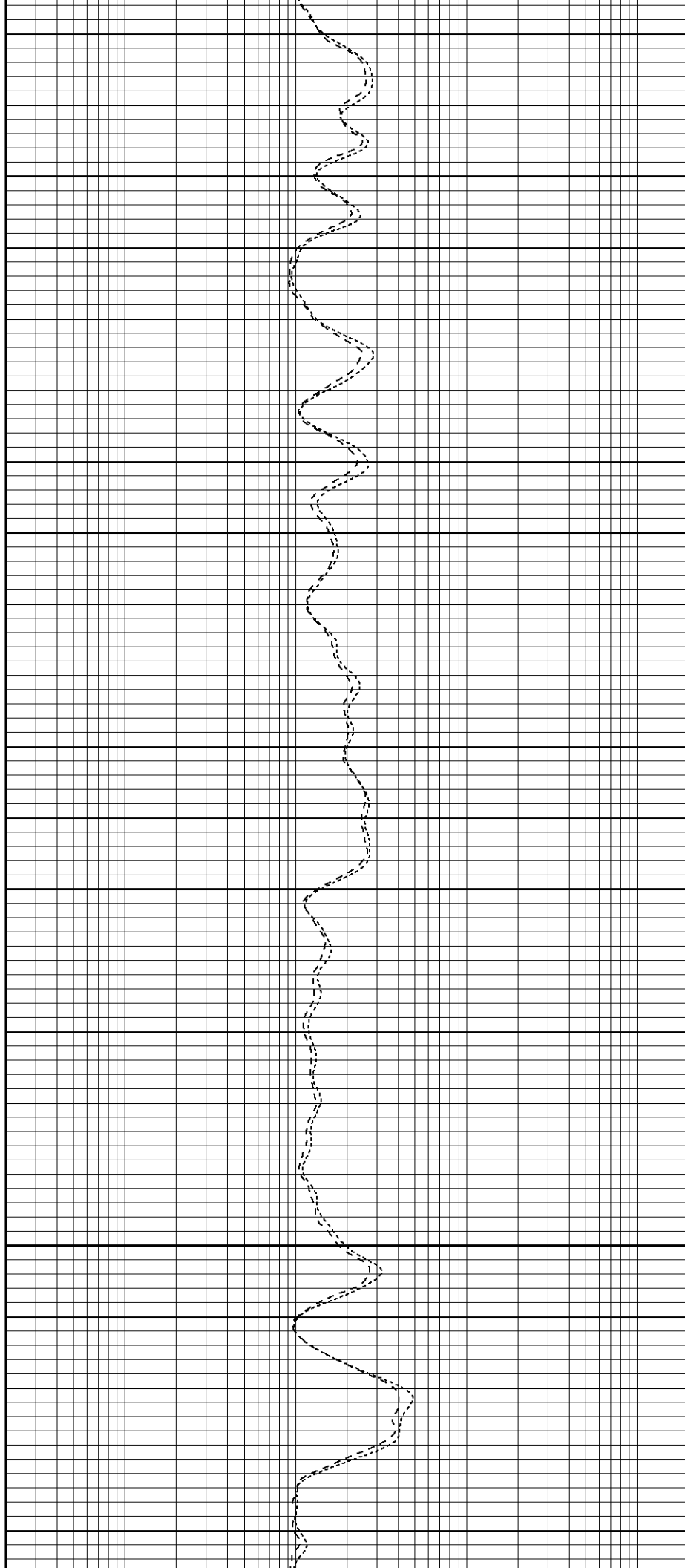


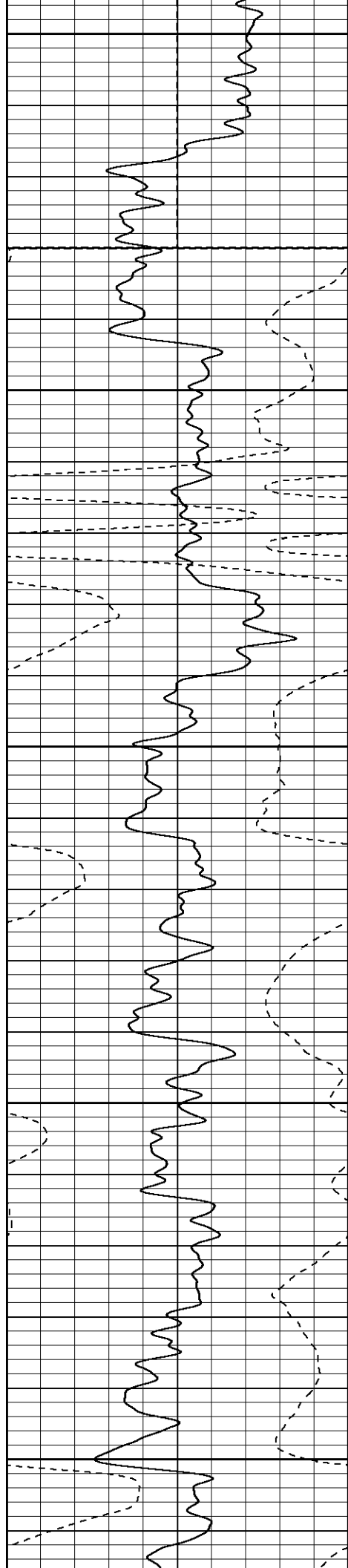
1150

1200

1250

1300





1350

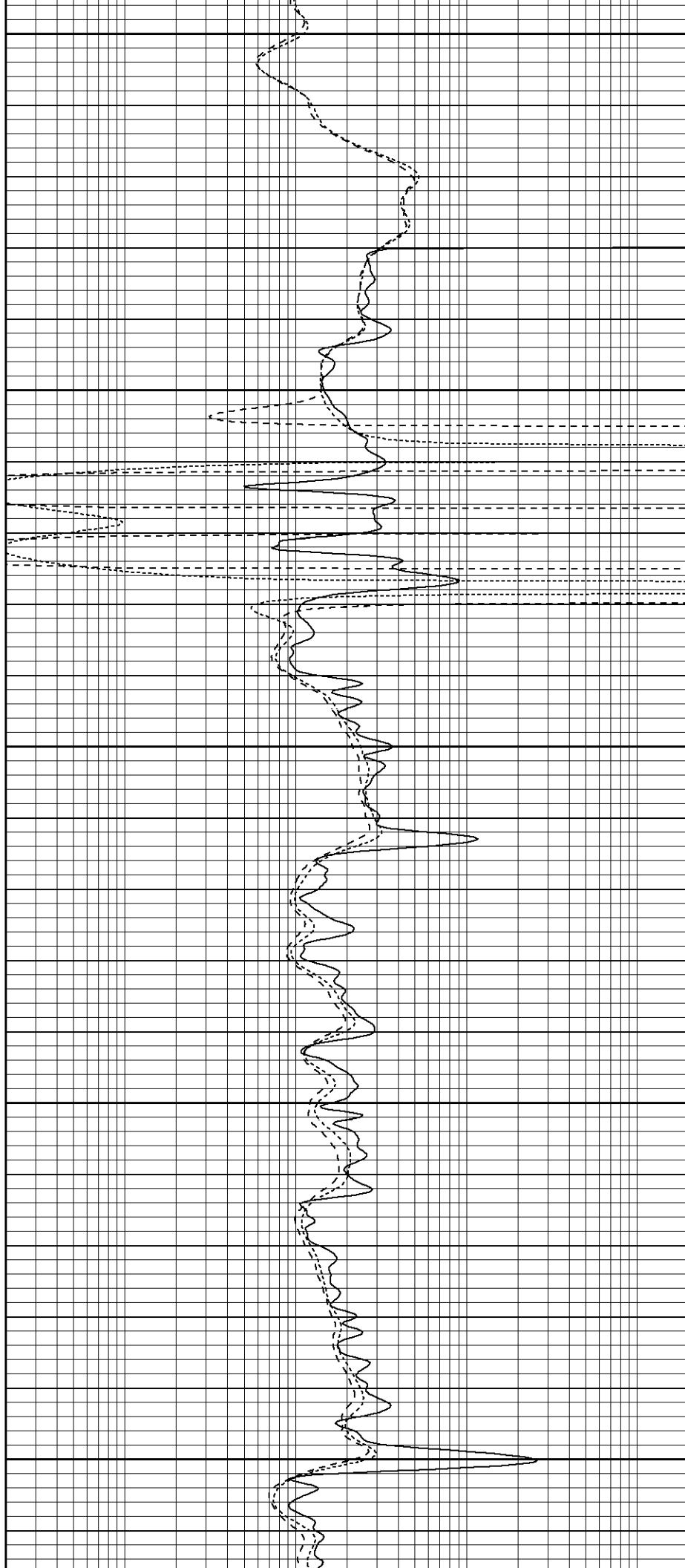
FOAM

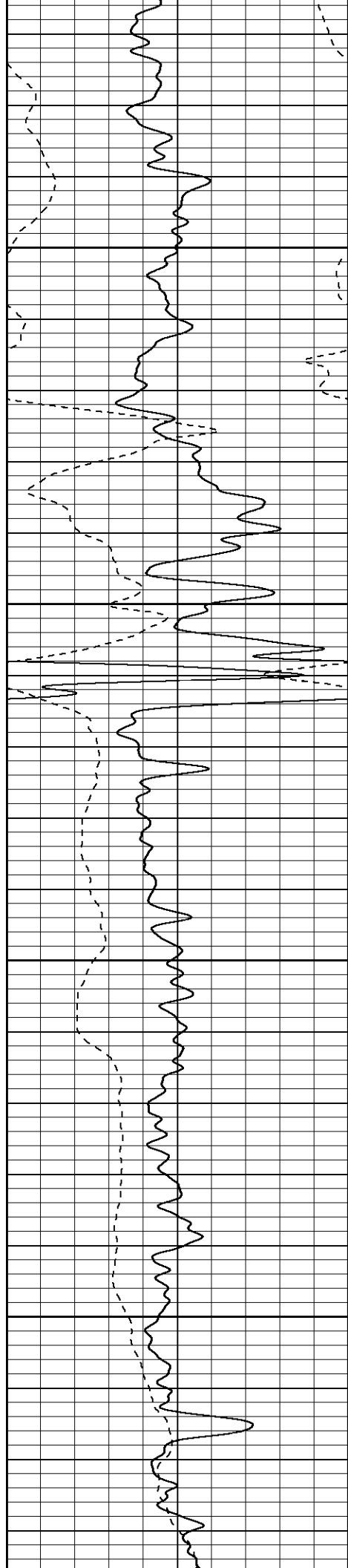
1400

1450

1500

1550



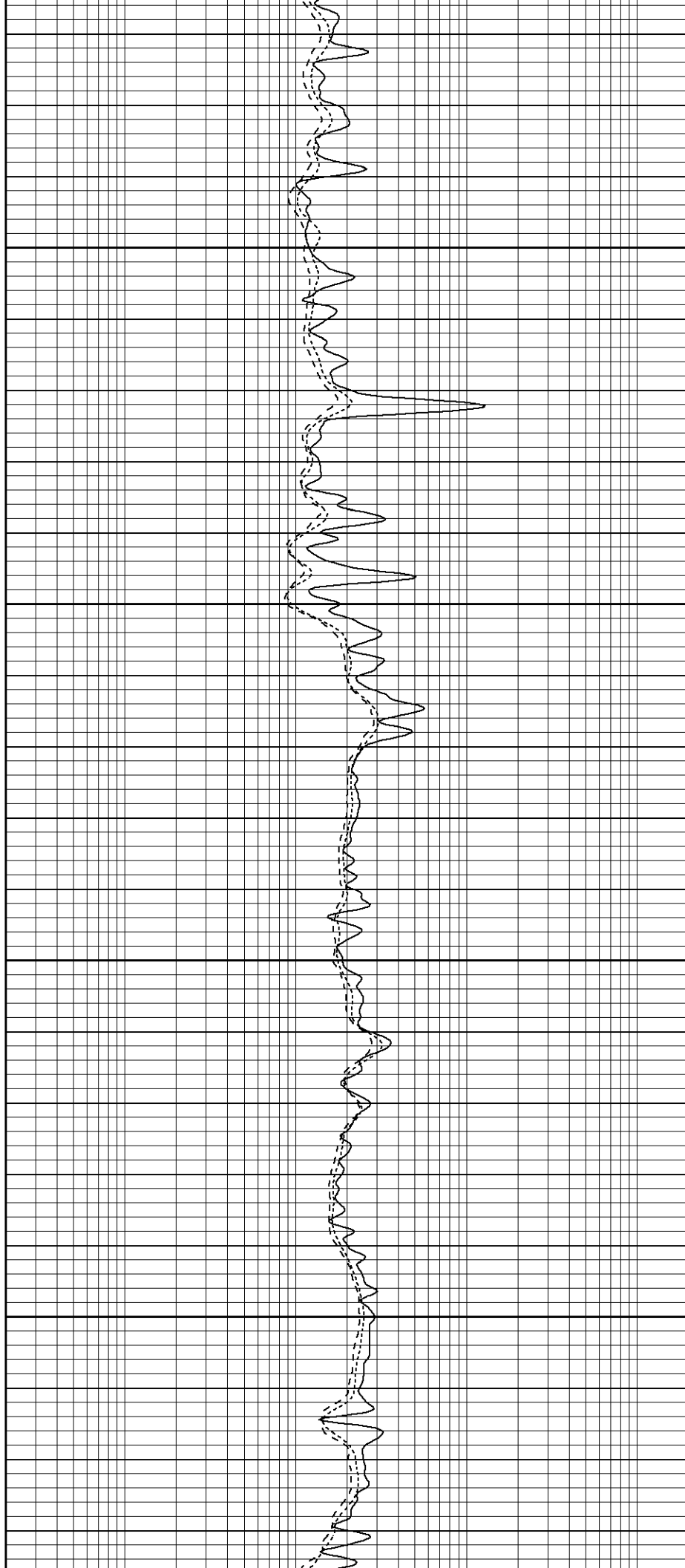


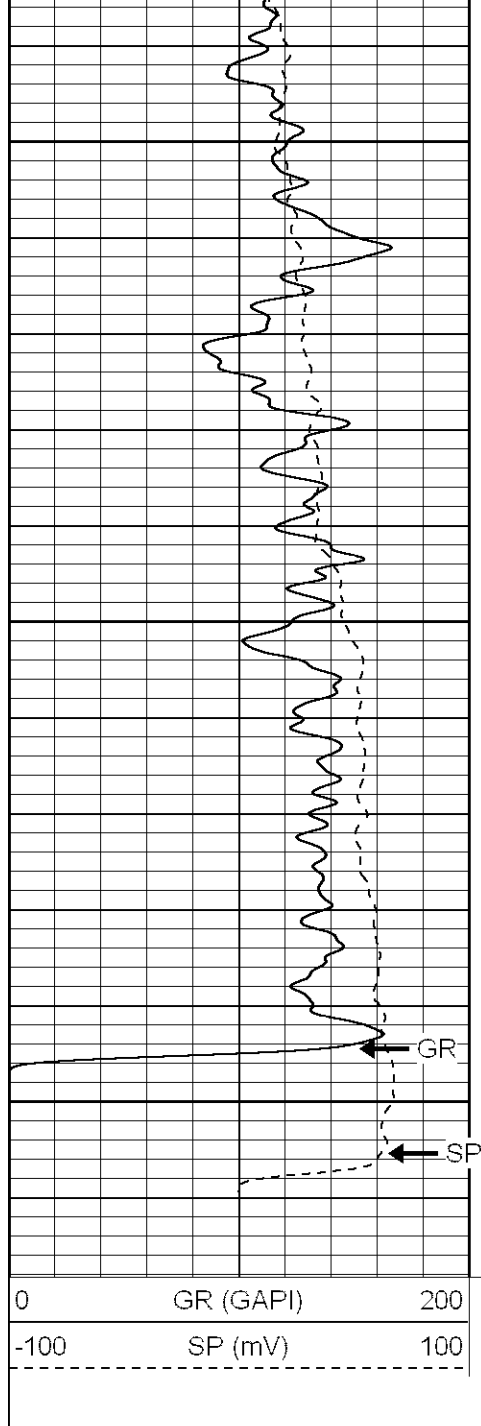
1600

1650

1700

1750





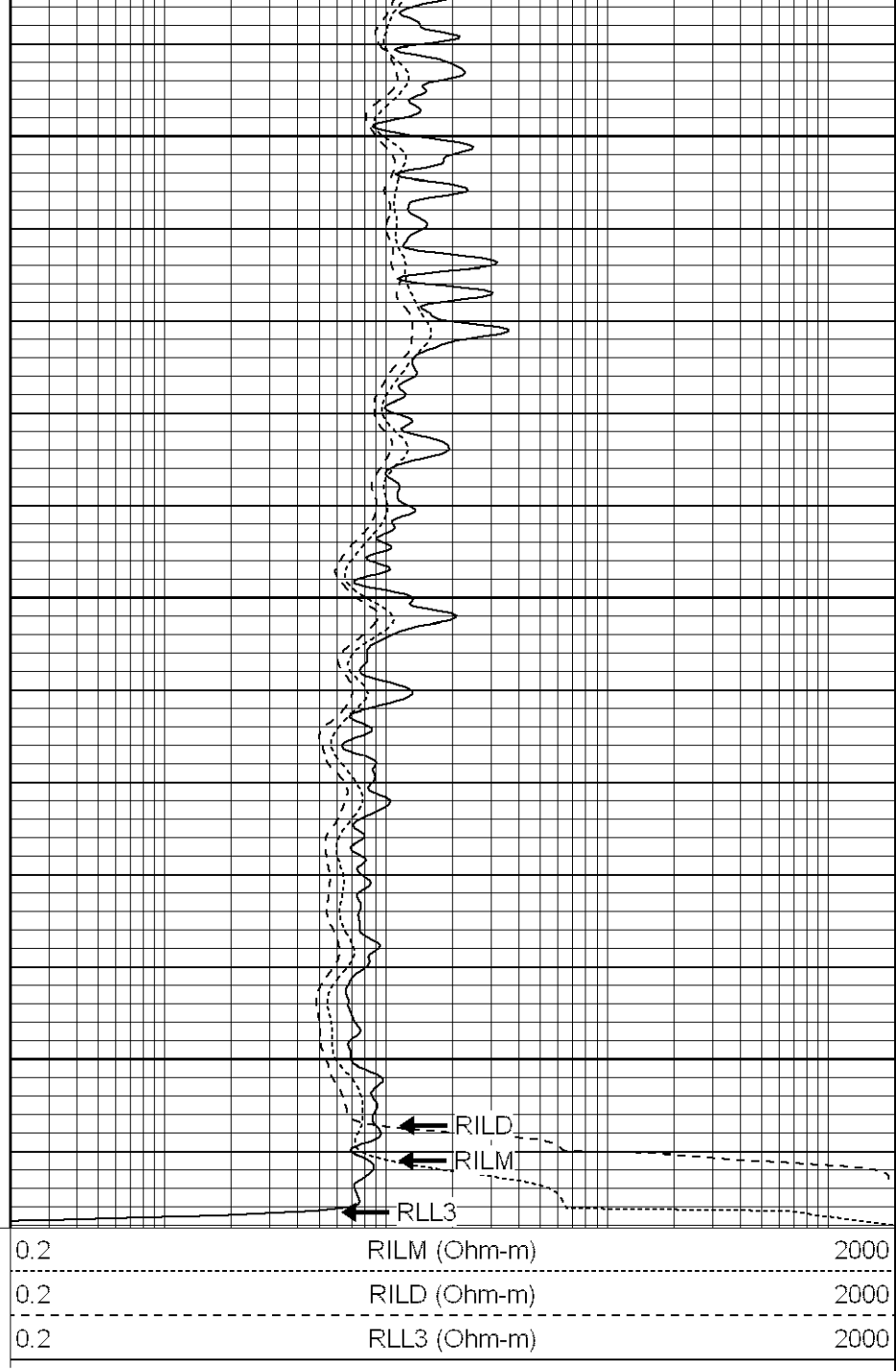
1800

1850

1900

GR

SP



RILD

RILM

RLL3

**SUPERIOR**

Black Lick, Pa.
 Mercer, Pa.
 Wooster, Oh.
 Cleveland, Ok.
 Trinidad, Co.

Repeat Section

Database File: xtoge2911.db
 Dataset Pathname: pass1.1
 Presentation Format: dil
 Dataset Creation: Wed Feb 14 06:37:58 2007 by Calc Open-Cased 061129
 Charted by: Depth in Feet scaled 1:240

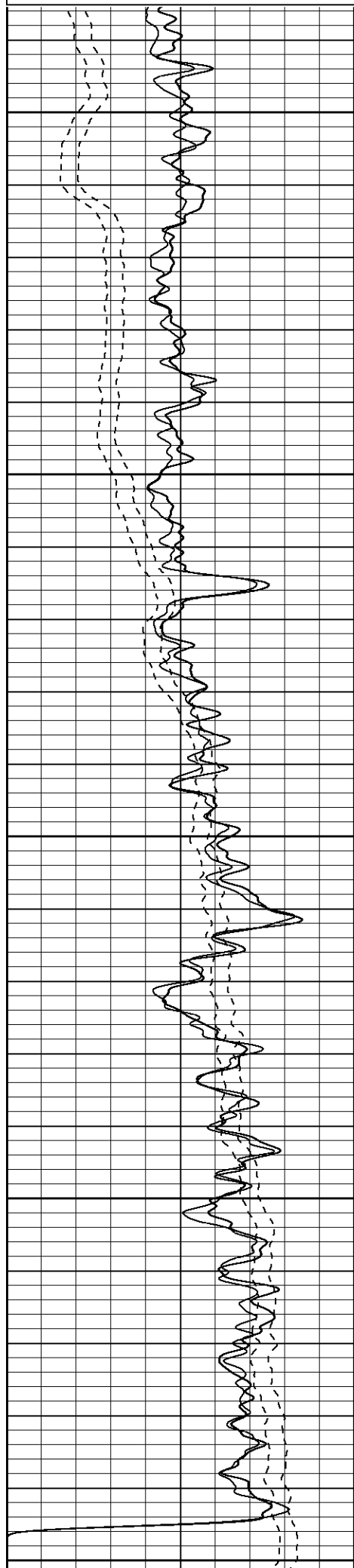
0	GR (GAPI)	200
-100	SP (mV)	100
0	GR-repeat (GAPI)	200
-100	SP-repeat (mV)	100

0.2	RILM (Ohm-m)	2000
0.2	RILD (Ohm-m)	2000
0.2	RLL3 (Ohm-m)	2000
0.2	RLL3-repeat (Ohm-m)	2000
0.2	RILM-repeat (Ohm-m)	2000
0.2	RILD-repeat (Ohm-m)	2000

0.2

RILD-repeat (Cm-H)

2000



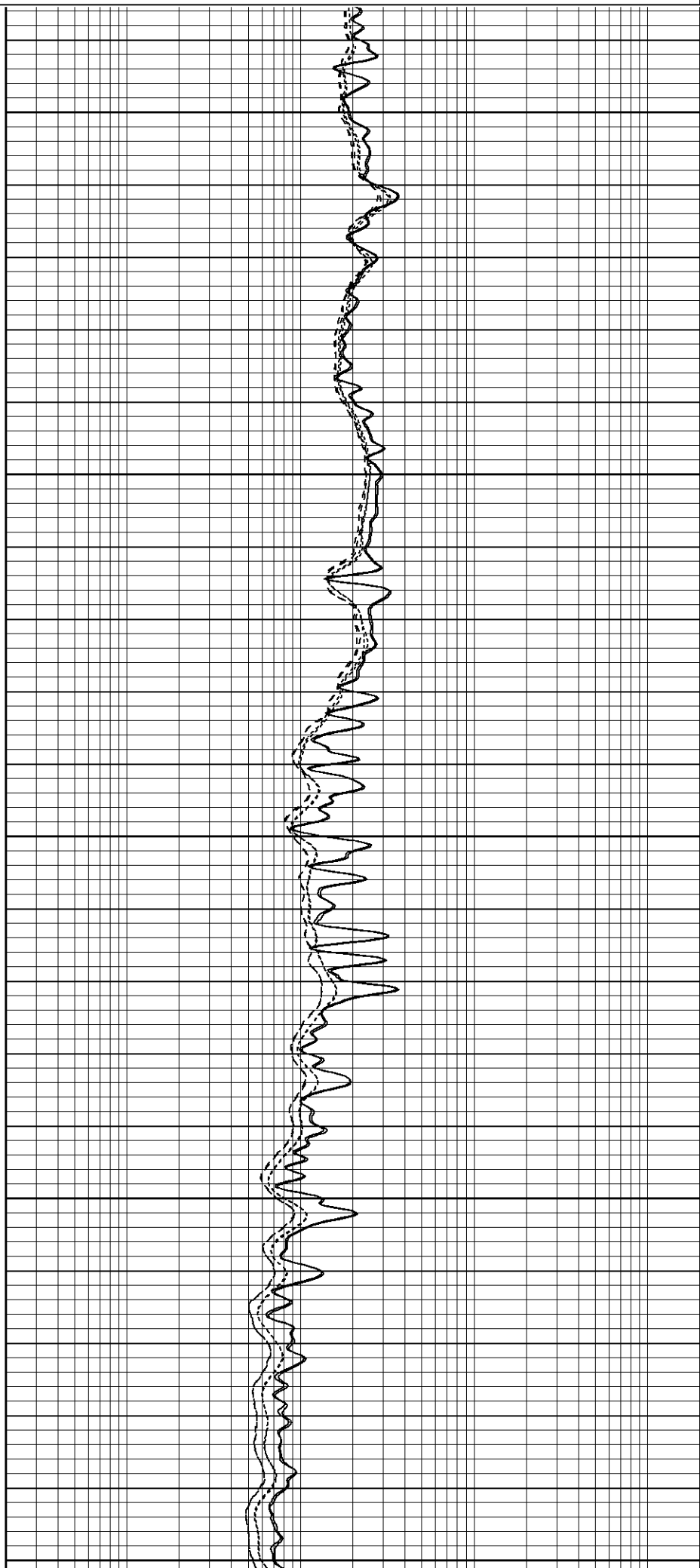
1700

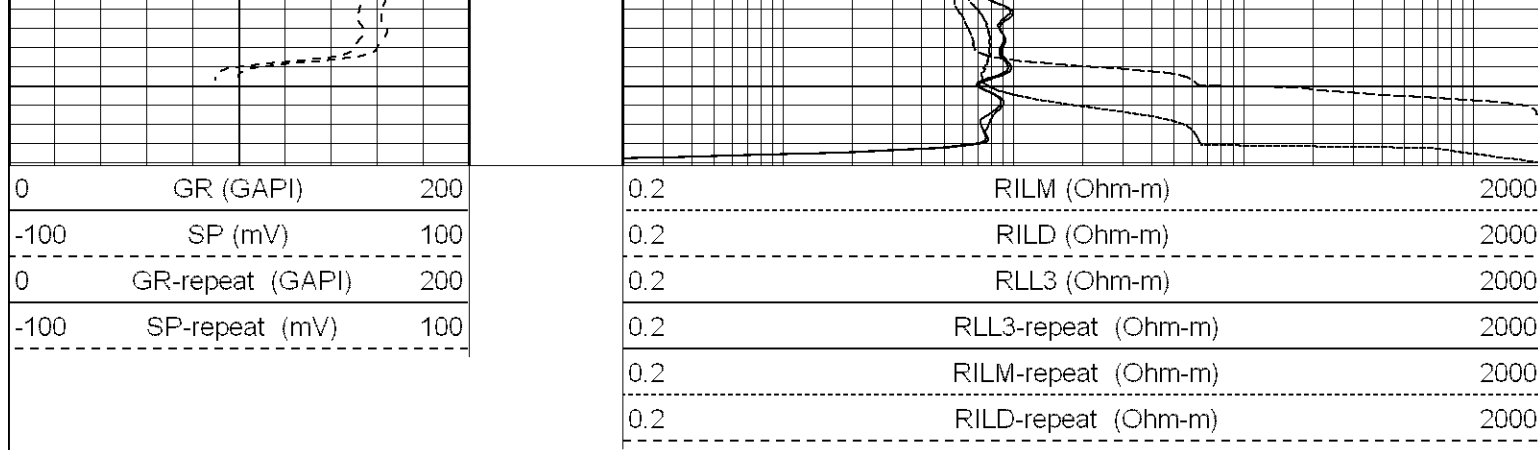
1750

1800

1850

1900





Calibration Report		
Database File:	xtoge2911.db	
Dataset Pathname:	pass2	
Dataset Creation:	Wed Feb 14 04:59:08 2007 by Log Open-Cased 061129	

Dual Induction Calibration Report

Serial-Model:	5375-G
Surface Cal Performed:	Fri Jan 19 08:02:09 2007
Downhole Cal Performed:	Sun Jan 21 14:02:19 2007

Surface Calibration								
Loop:	Readings				References		Results	
	Air	Loop			Air	Loop	m	b
Deep	0.001	0.620	V		0.000	500.000 mmho-m	807.659	-1.119
Medium	0.005	0.743	V		0.000	550.000 mmho-m	744.727	-3.505
Internal:	Readings				References		Results	
	Zero	Cal			Zero	Cal	m	b
Deep	0.001	0.620	V		0.000	500.000 mmho-m	807.698	-1.159
Medium	0.005	0.743	V		0.000	550.000 mmho-m	744.801	-3.569

Downhole Calibration								
Internal:	Readings				References		Results	
	Zero	Cal			Zero	Cal	m	b
Deep	0.123	499.901	mmho-m		0.039	500.015 mmho-m	1.000	-0.084
Medium	0.245	549.982	mmho-m		0.064	550.009 mmho-m	1.000	-0.182
Shallow	2.506	0.009	V		500.000	2.000 Ohm-m	145.000	0.000

Gamma Ray Calibration Report

Serial Number:	2001	
Tool Model:	OH	
Performed:	Sat Feb 03 02:20:45 2007	
Calibrator Value:	1.0	GAPI
Background Reading:	0.0	cps
Calibrator Reading:	1.0	cps
Sensitivity:	0.1700	GAPI/cps

Sensor	Offset (ft)	Schematic	Description	Len (ft)	OD (in)	Wt (lb)
--------	-------------	-----------	-------------	----------	---------	---------

