



SUPERIOR
Black Lick, Pa.
Mercer, Pa.
Wooster, Oh.
Cleveland, Ok.
Trinidad, Co.

COMPENSATED DENSITY LOG

Company	Pioneer Natural Resources	Company	Pioneer Natural Resources
Well	Lorencito 12-5-34-66	Well	Lorencito 12-5-34-66
Field	Purgatorie River	Field	Purgatorie River
County	Las Animas	County	Las Animas
State	CO	State	CO
Location:	API # : 05-071-09434-00 2623' FSL & 273' FWL	Other Services	SIL
Permanent Datum	SEC 5 TWP 34s RGE 66W	Elevation	
Log Measured From	Ground level	K.B. 7353	
Drilling Measured From	Kelly Bushing 9' A. G. L. Kelly Bushing	D.F. -----	
		G.L. 7344'	
Date	1-19-08		1-19-08
Run Number	One		Four
Depth Driller	2015'		2015'
Depth Logger	1504'		2020'
Bottom Logged Interval	1502'		2018'
Top Log Interval	Surface Casing		5.5" Casing
Casing Driller	8.625@261'		5.5" @ 1526'
Casing Logger	261'		1528'
Bit Size	7 7/8"		7 7/8"
Type Fluid in Hole	Water		Water
Density / Viscosity	///		///
pH / Fluid Loss	///		///
Source of Sample	///		///
Rm @ Meas. Temp	///		///
Rmf @ Meas. Temp	///		///
Rmc @ Meas. Temp	///		///
Source of Rmf / Rmc	///		///
Rm @ BHT	///		///
Time Circulation Stopped	4:30 AM		4:30 A.M.
Time Logger on Bottom	7:30 AM		3:15 P.M.
Maximum Recorded Temperature	85 DEG F		112 DEG F
Equipment Number	T0700		T0701
Location	Trinidad		Trinidad
Recorded By	Karl Lucero		C.Sisneros
Witnessed By	Mr. Neal Hawthorne		Mr. Neal Hawthorne

>>> Fold Here >>>

All interpretations are opinions based on inferences from electrical or other measurements and we cannot and do not guarantee the accuracy or correctness of any interpretation, and we shall not, except in the case of gross or willful negligence on our part, be liable or responsible for any loss, costs, damages, or expenses incurred or sustained by anyone resulting from any interpretation made by any of our officers, agents or employees. These interpretations are also subject to our general terms and conditions set out in our current Price Schedule.

Comments

Density Porosity Presented On Sandstone Matrix
Multiple passes ran thru 5.5" casing.
Merged all data.
Well Directions:
Lorencito, 1st right turn up hill, second drive through location.



SUPERIOR

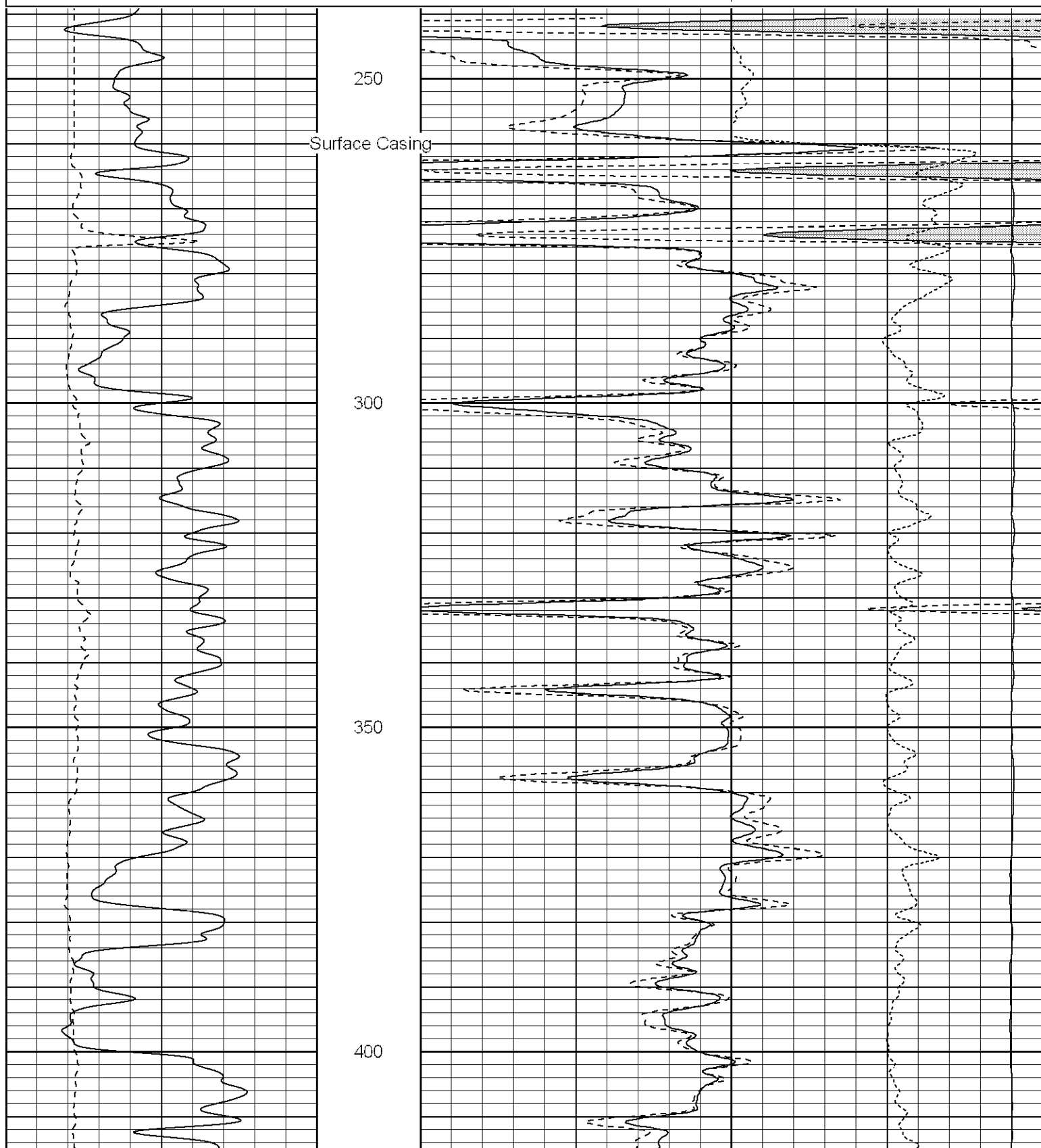
Black Lick, Pa.
Mercer, Pa.
Wooster, Oh.
Cleveland, Ok.
Trinidad, Co.

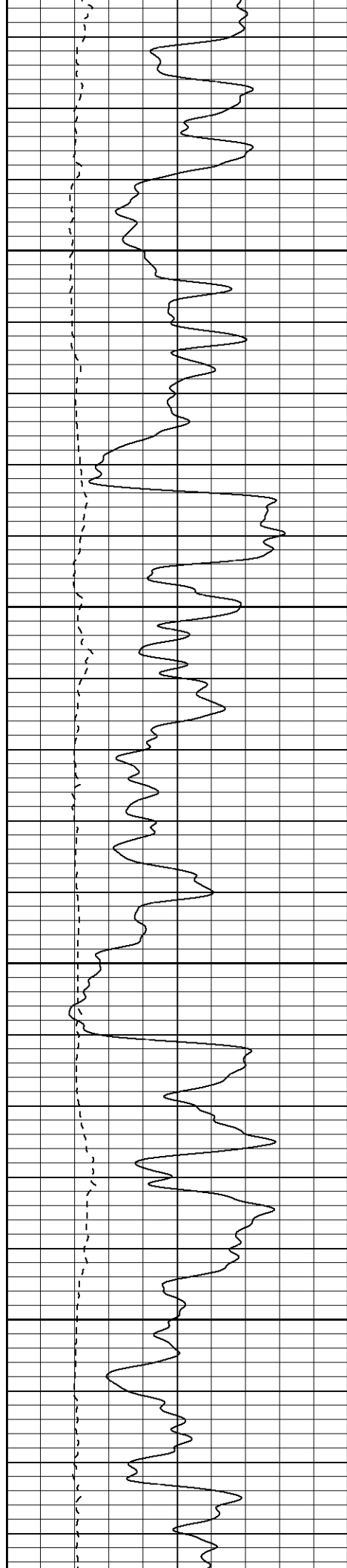
Main Pass

Database File: lorencito12-5-34-66.db
Dataset Pathname: pass1cdl
Presentation Format: cdl
Dataset Creation: Mon Jan 21 16:36:47 2008
Charted by: Depth in Feet scaled 1:240

0	GR (GAPI)	200
6	DCAL (in)	16

2	RHOB (g/cc)	3
1	RHOB (g/cc)	2
30	DPOR (pu)	-10
-0.5	RHOC (g/cc)	0.5
4000	LTEN (lb)	0



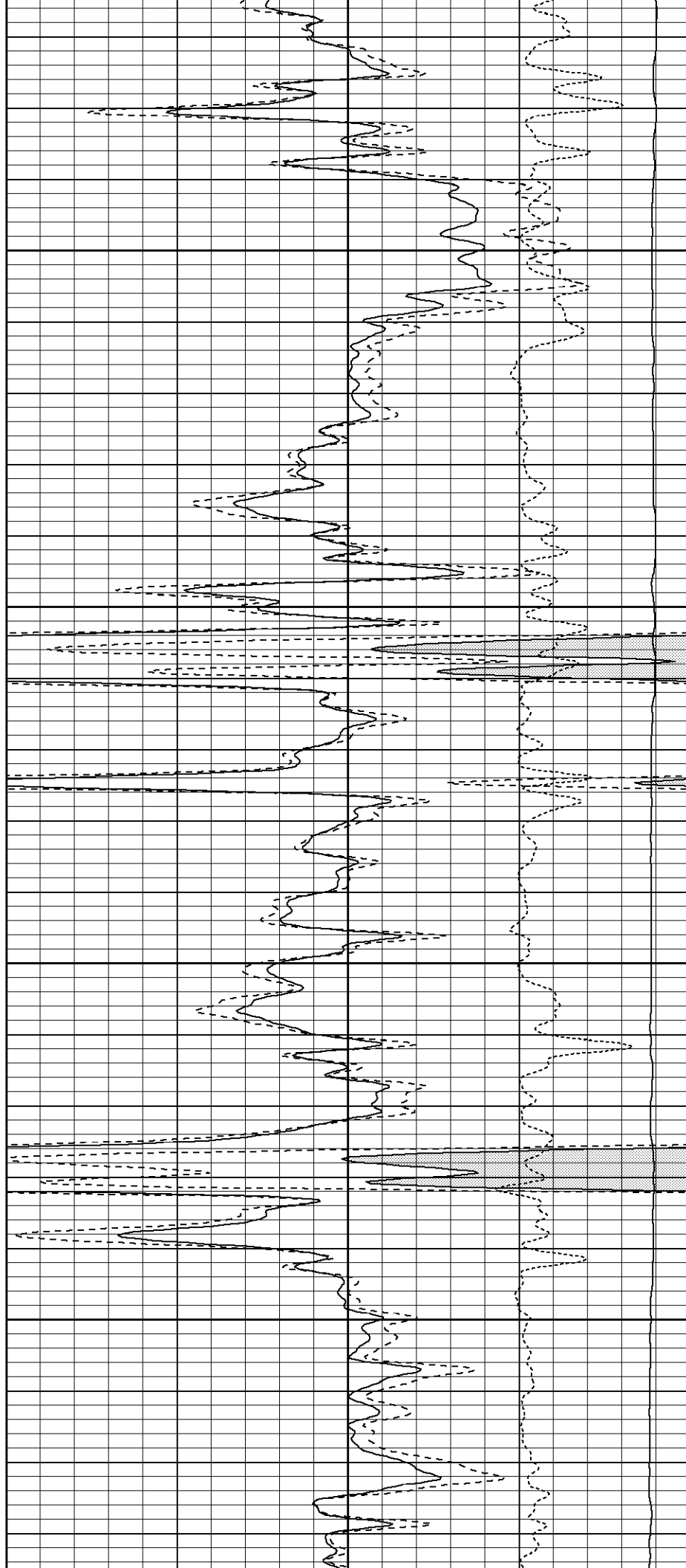


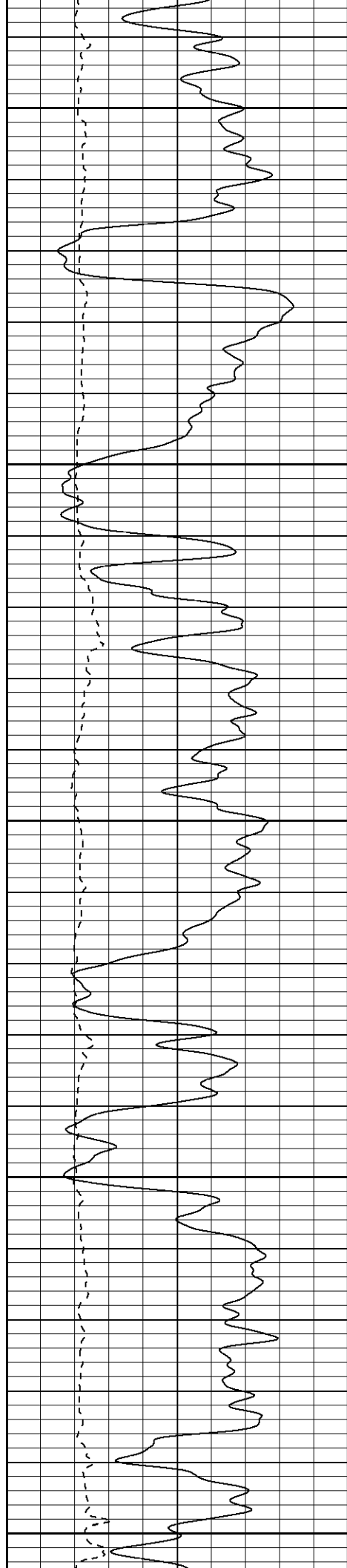
450

500

550

600





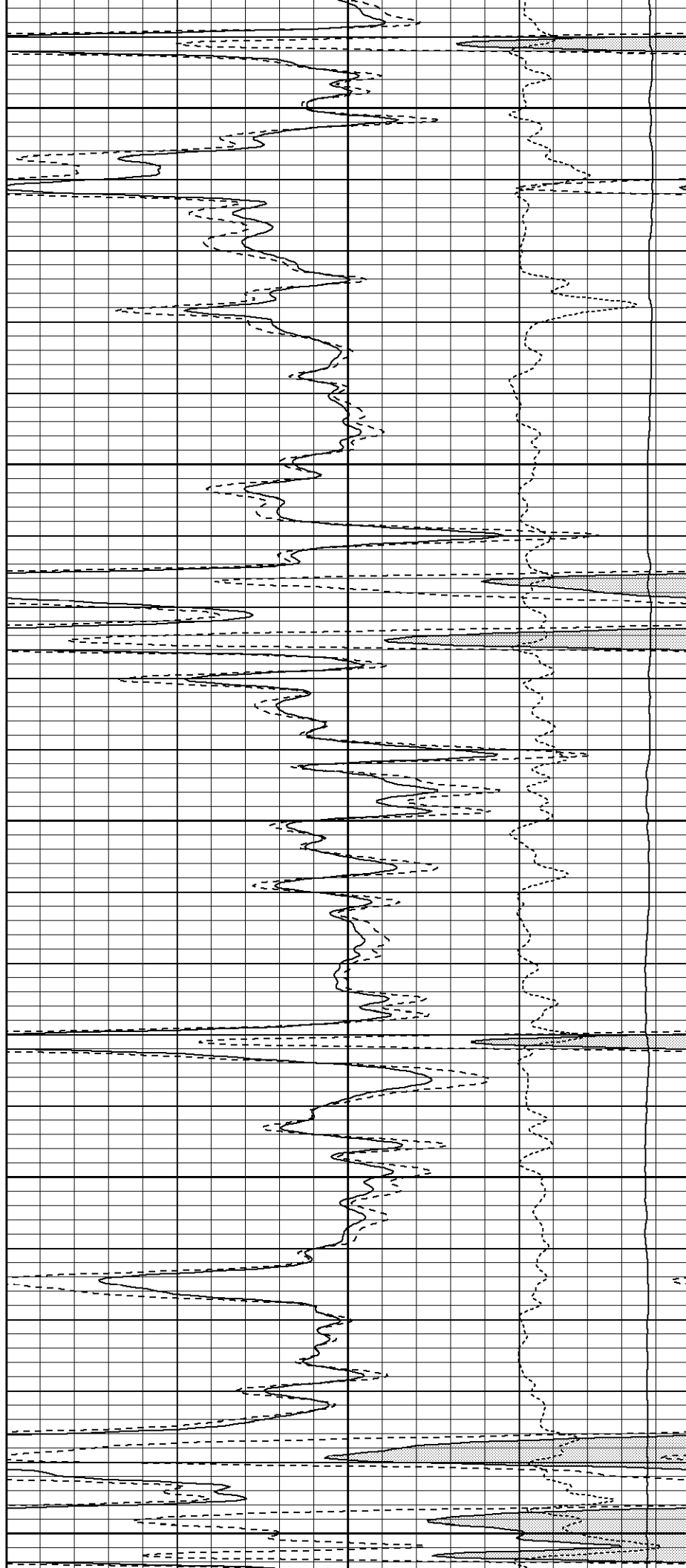
650

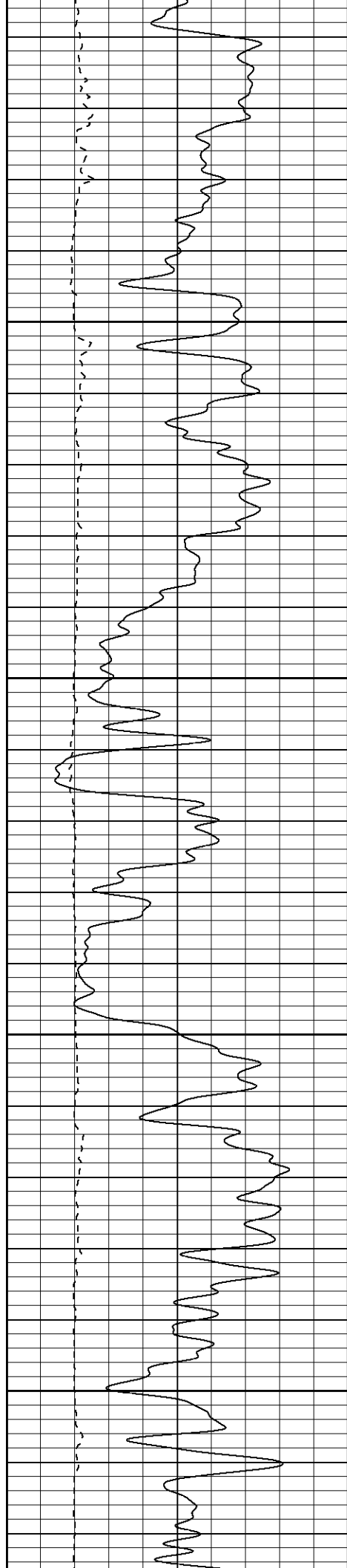
700

750

800

850



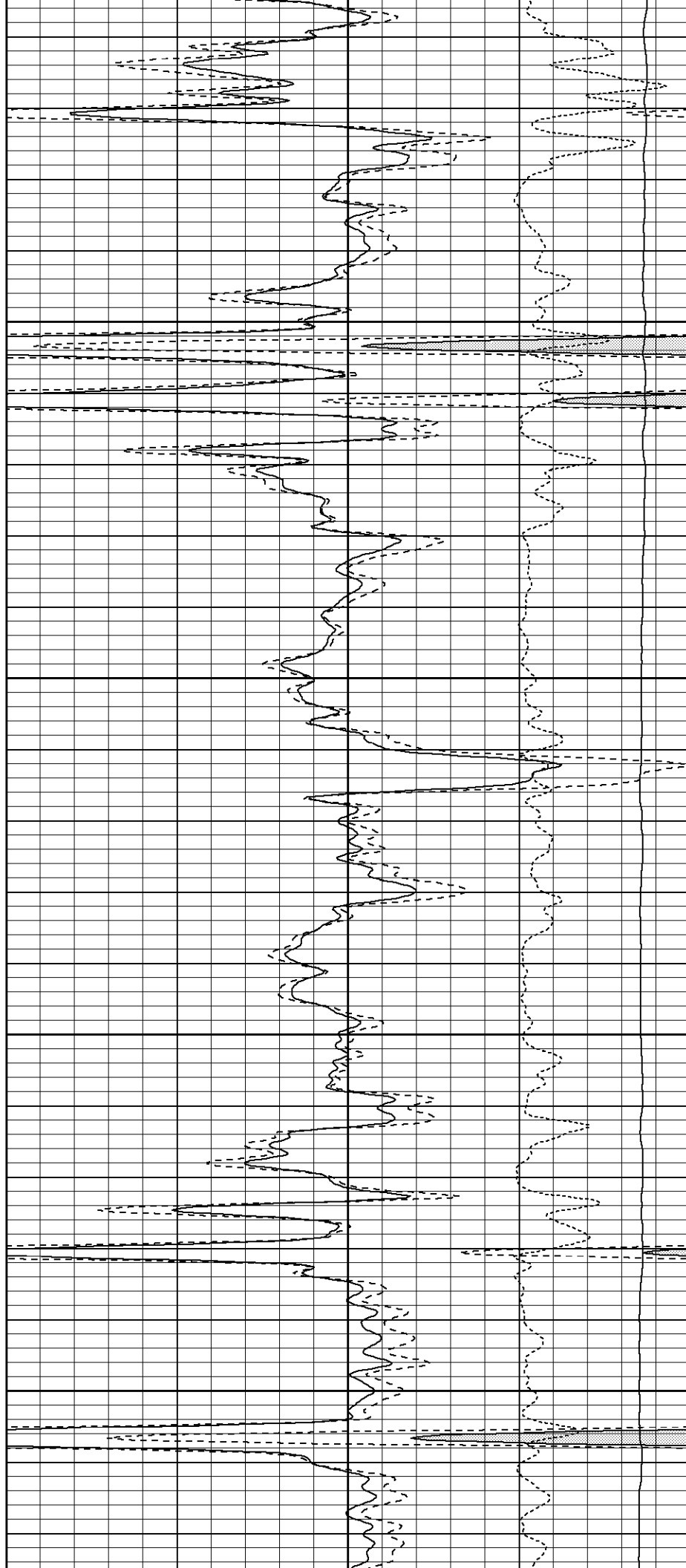


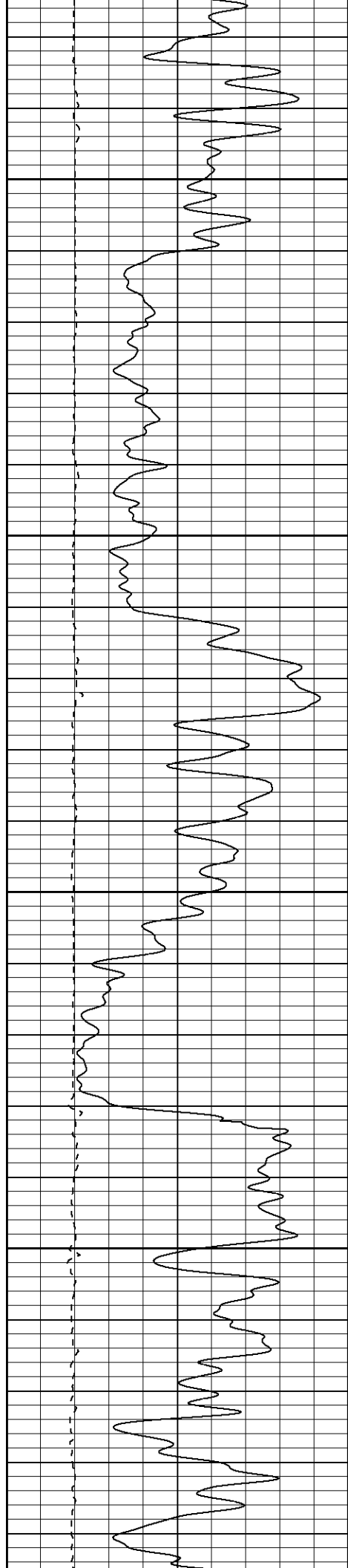
900

950

1000

1050



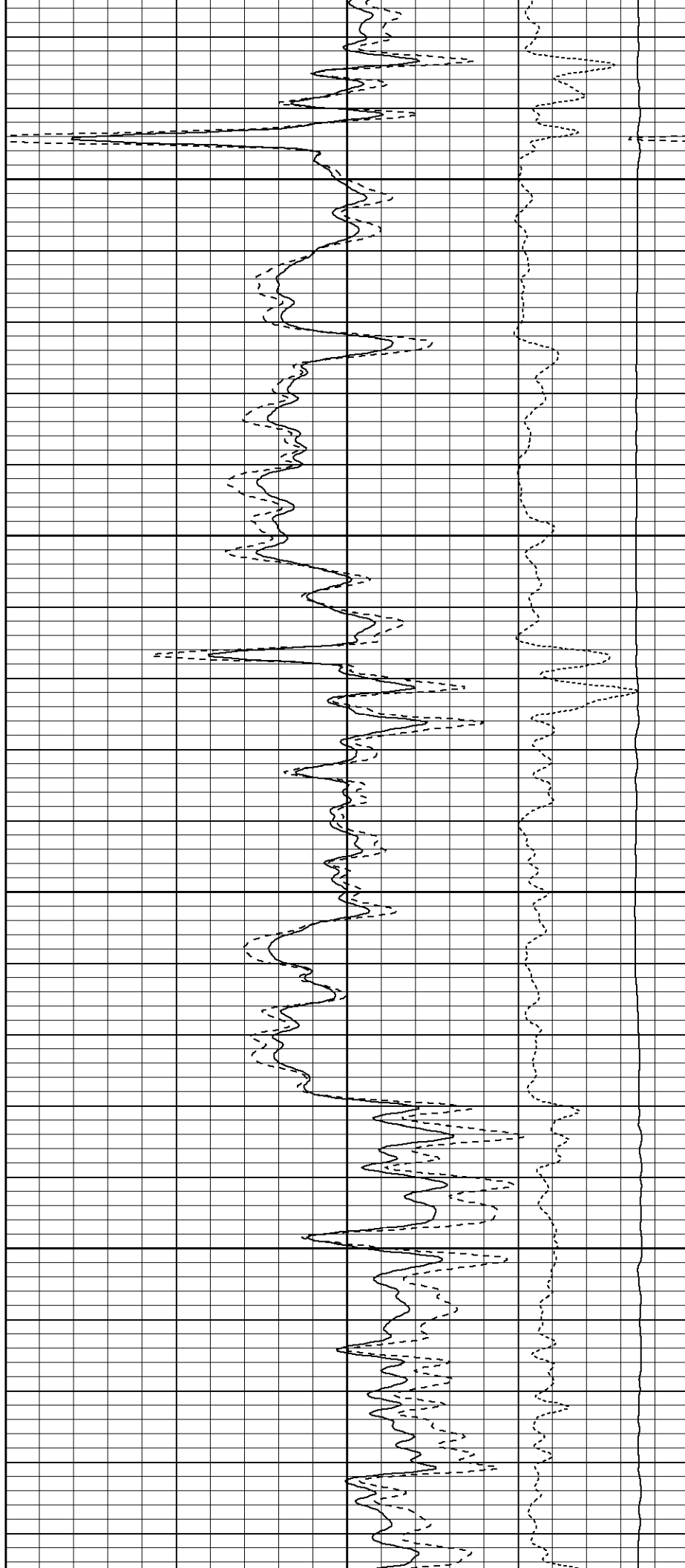


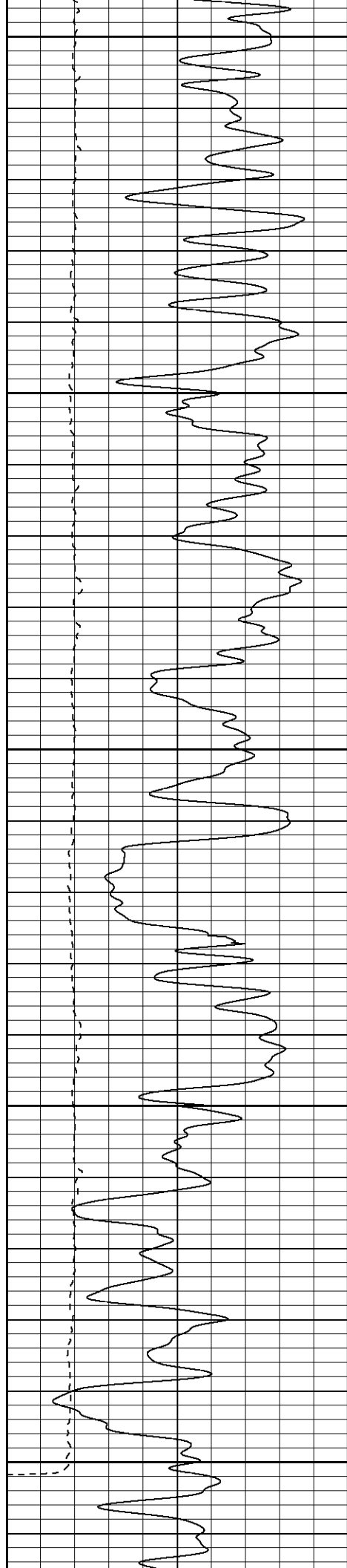
1100

1150

1200

1250





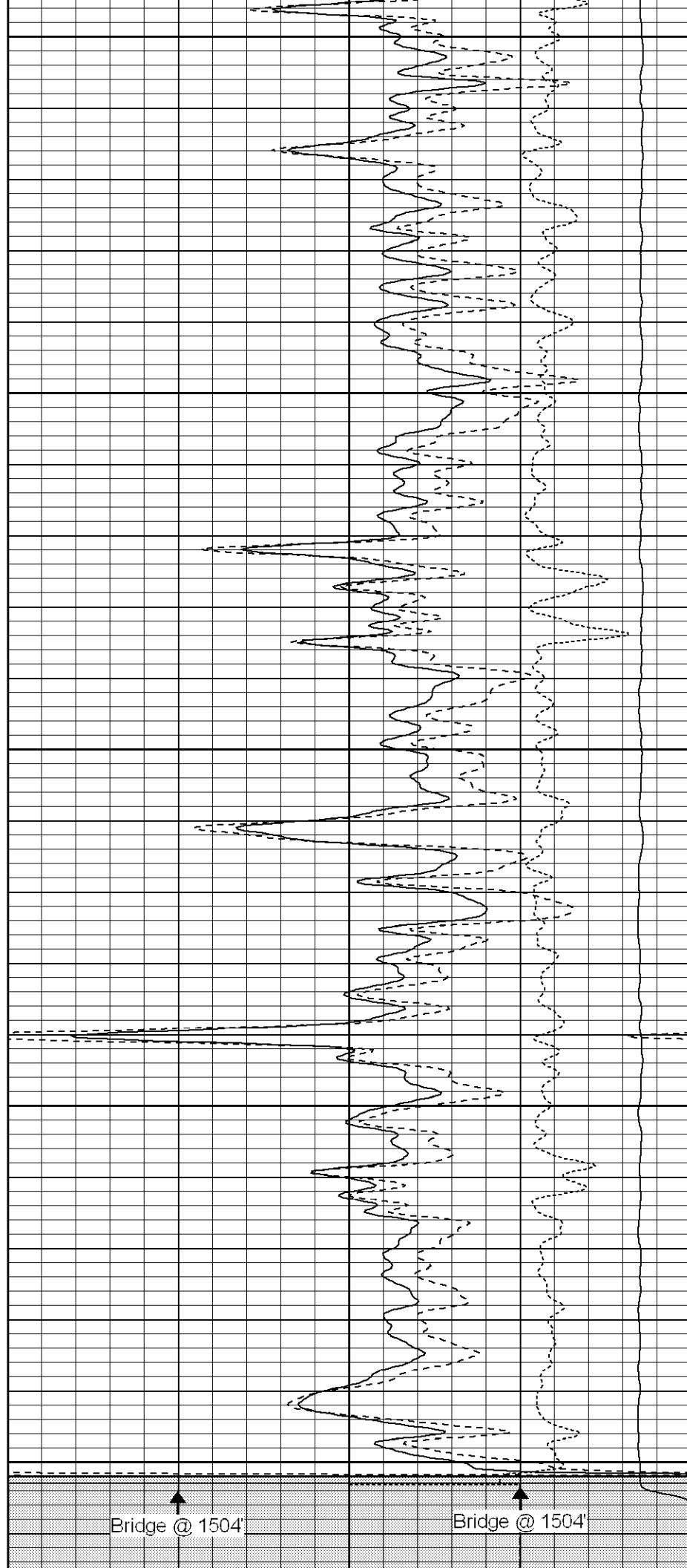
1300

1350

1400

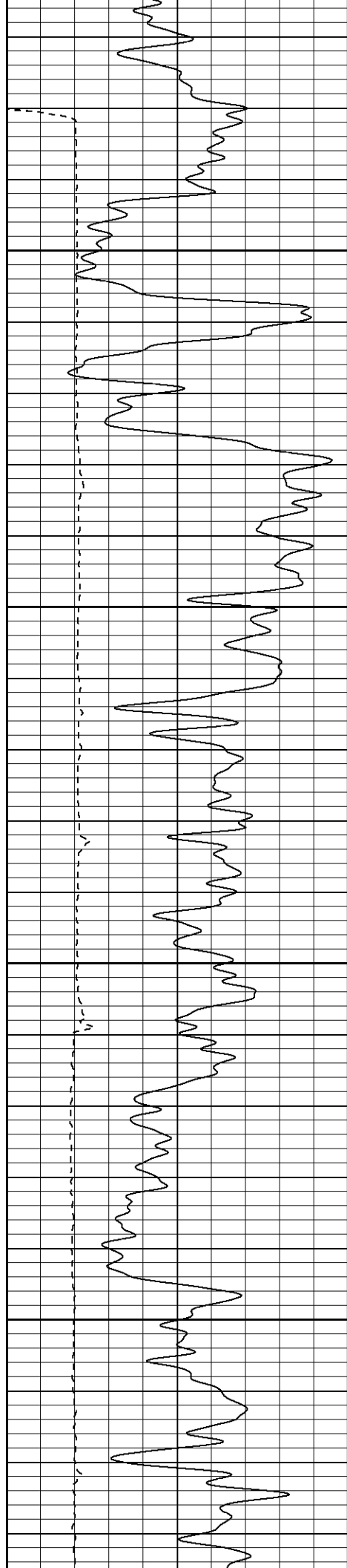
1450

1500



Bridge @ 1504'

Bridge @ 1504'

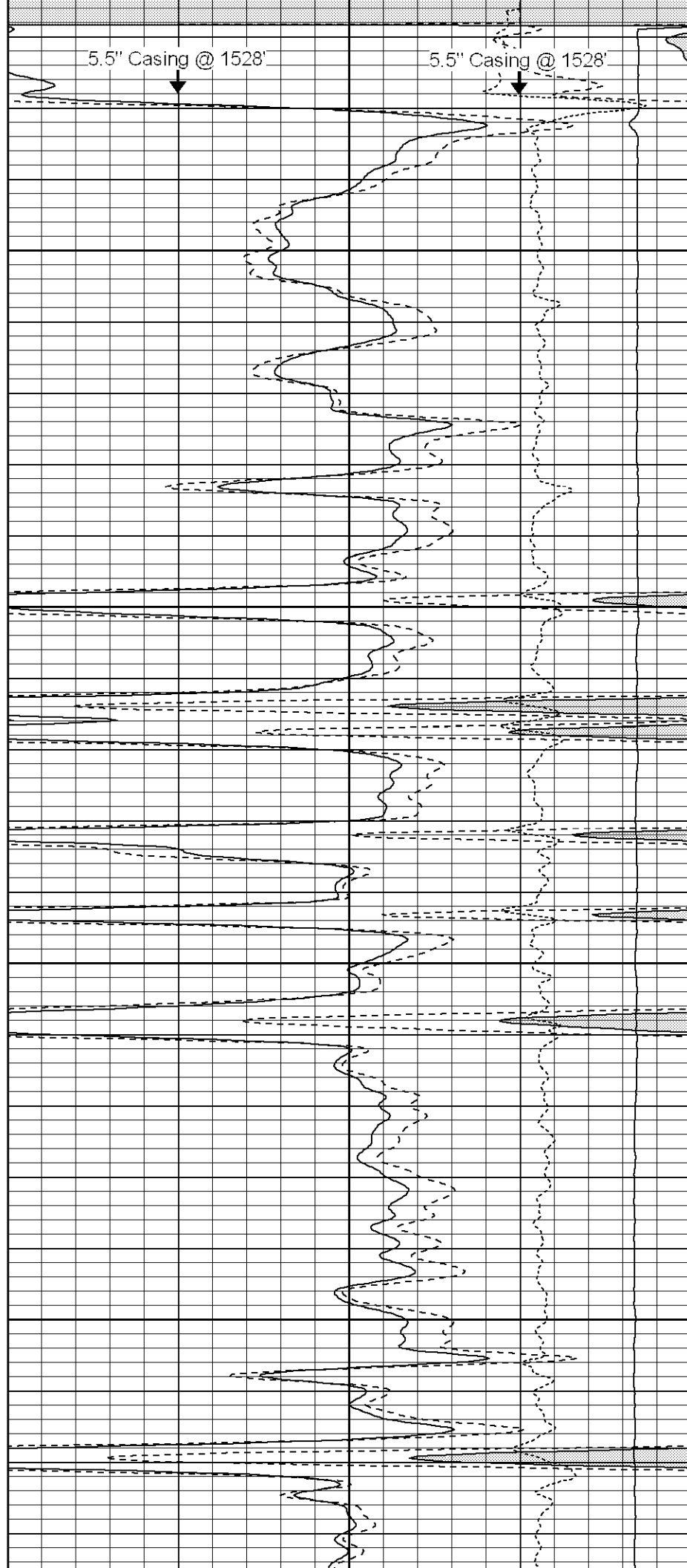


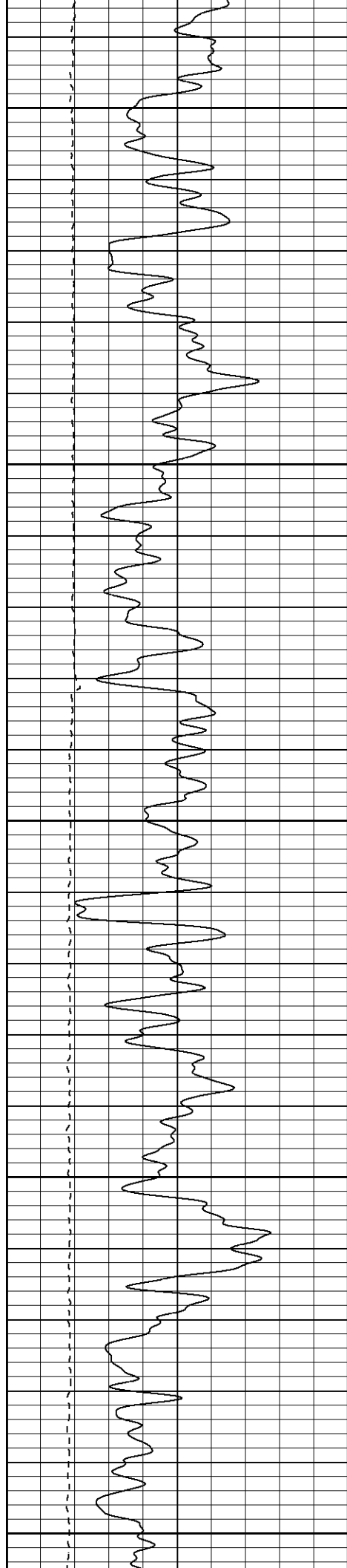
1550

1600

1650

1700





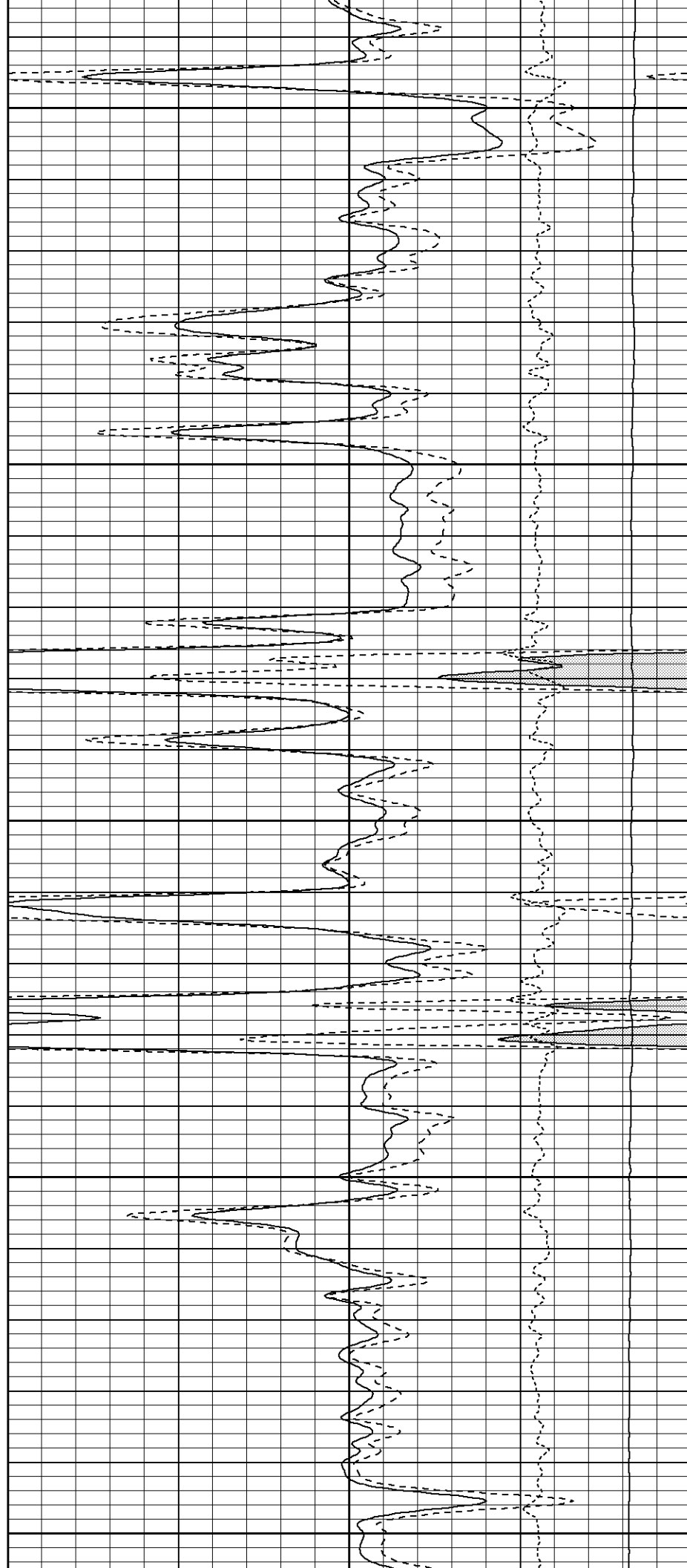
1750

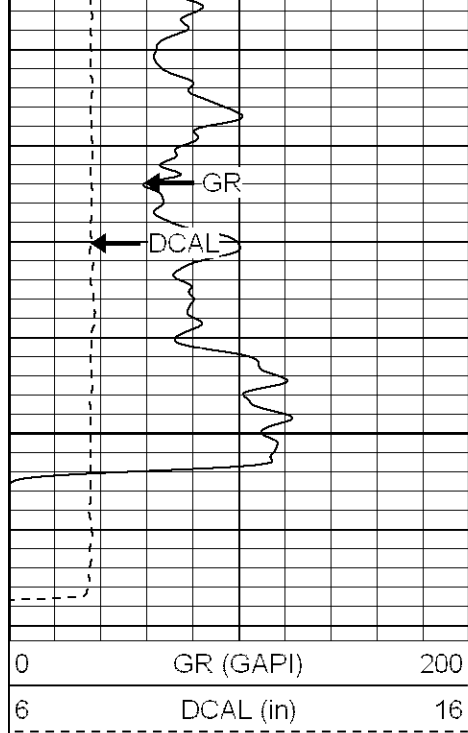
1800

1850

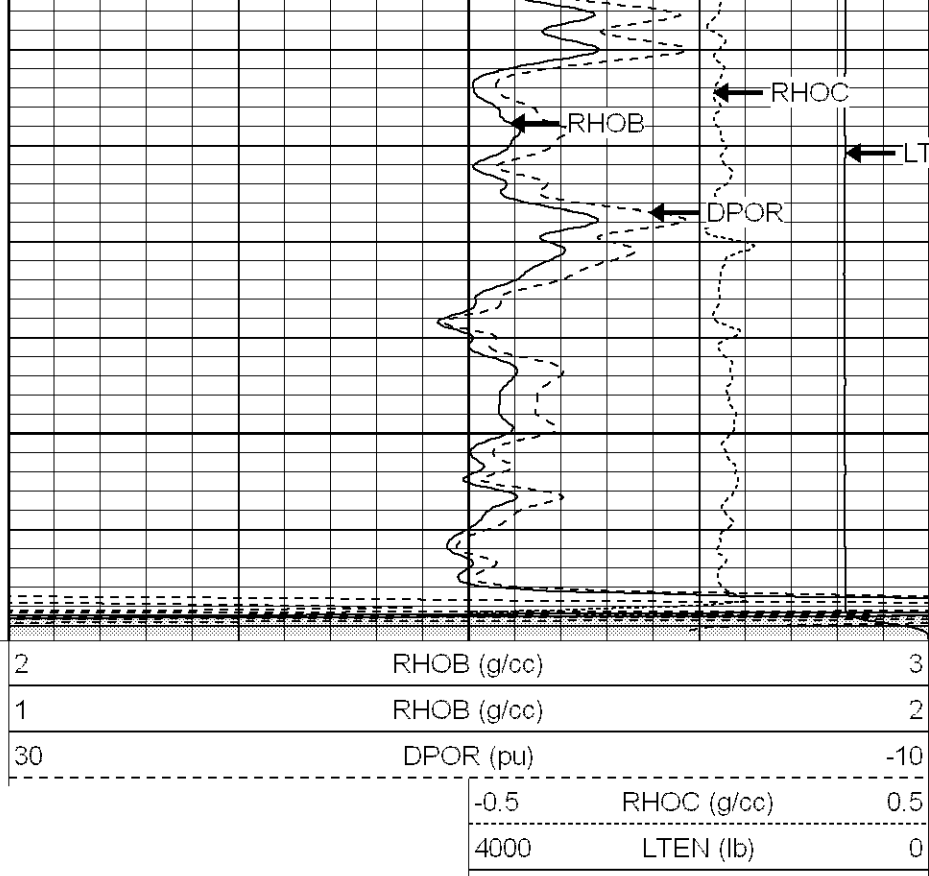
1900

1950





2000

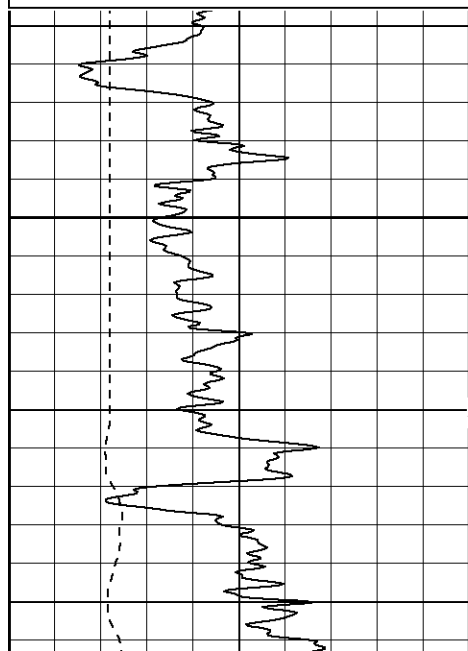
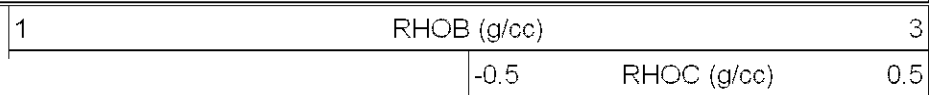
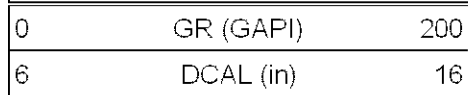


SUPERIOR

Black Lick, Pa.
Mercer, Pa.
Wooster, Oh.
Cleveland, Ok.
Trinidad, Co.

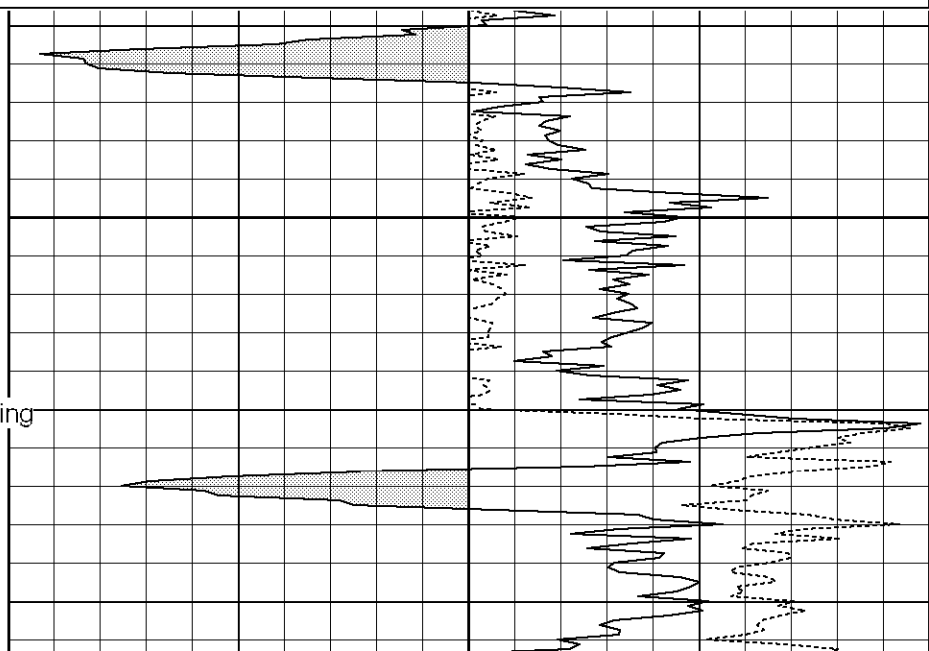
High Resolution Pass

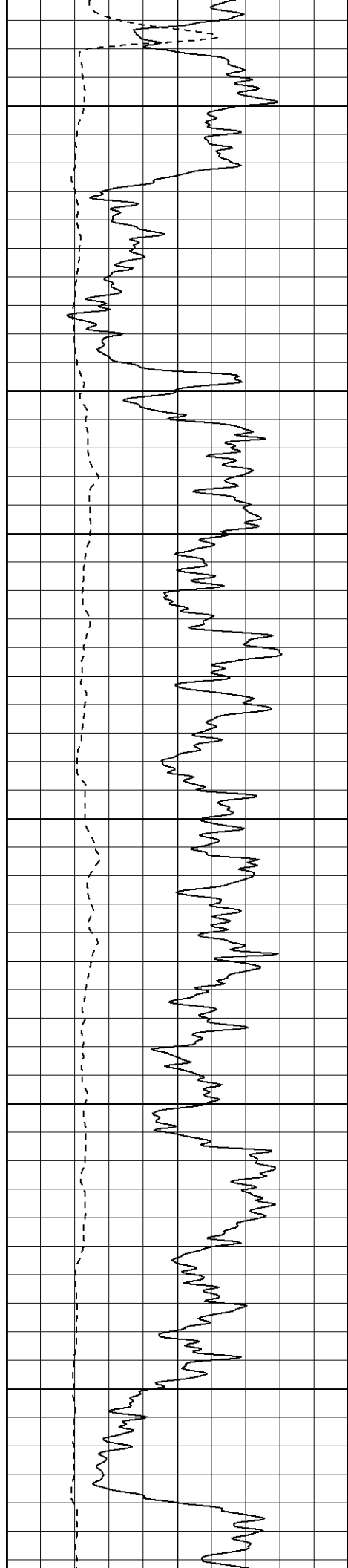
Database File: lorencito12-5-34-66.db
Dataset Pathname: pass1hr
Presentation Format: cdlhr
Dataset Creation: Mon Jan 21 17:16:22 2008
Charted by: Depth in Feet scaled 1:120



250

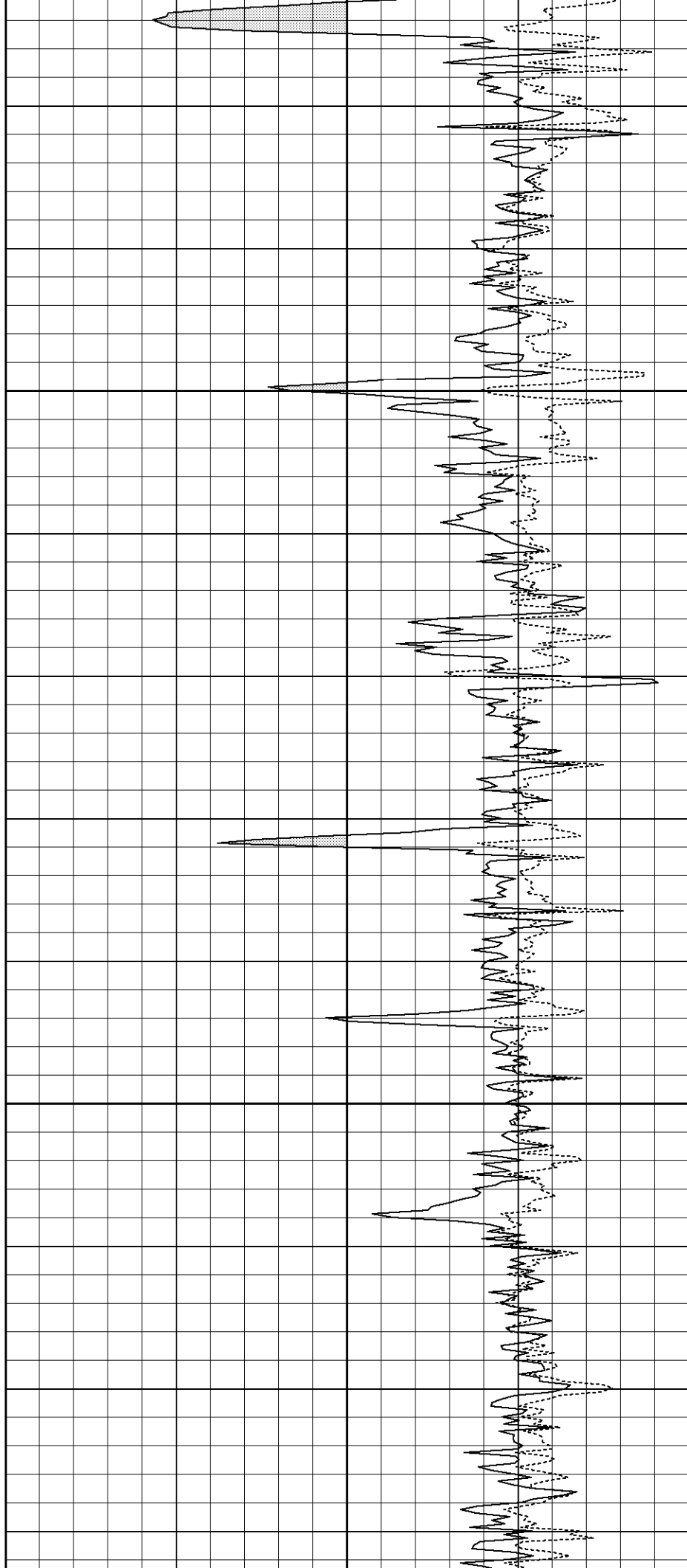
Surface Casing

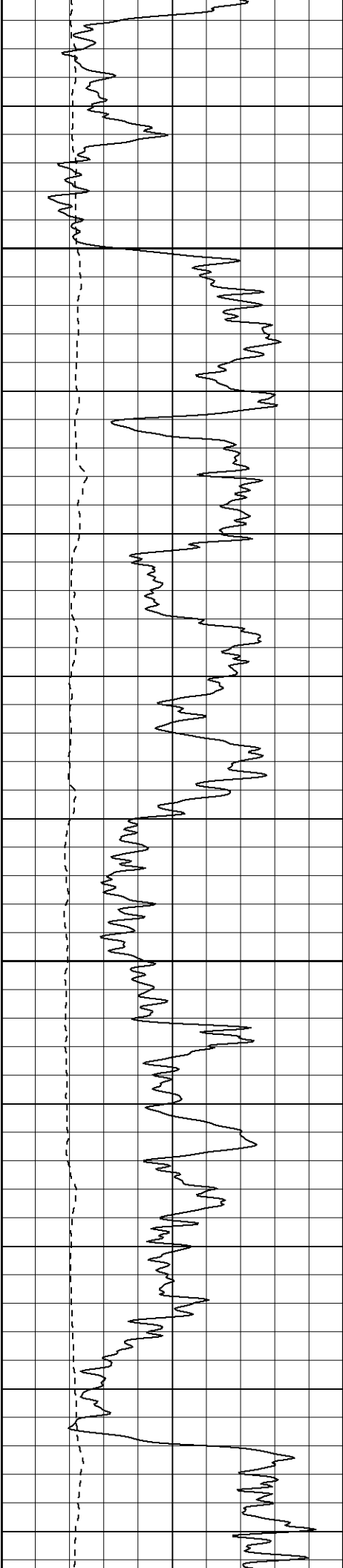




300

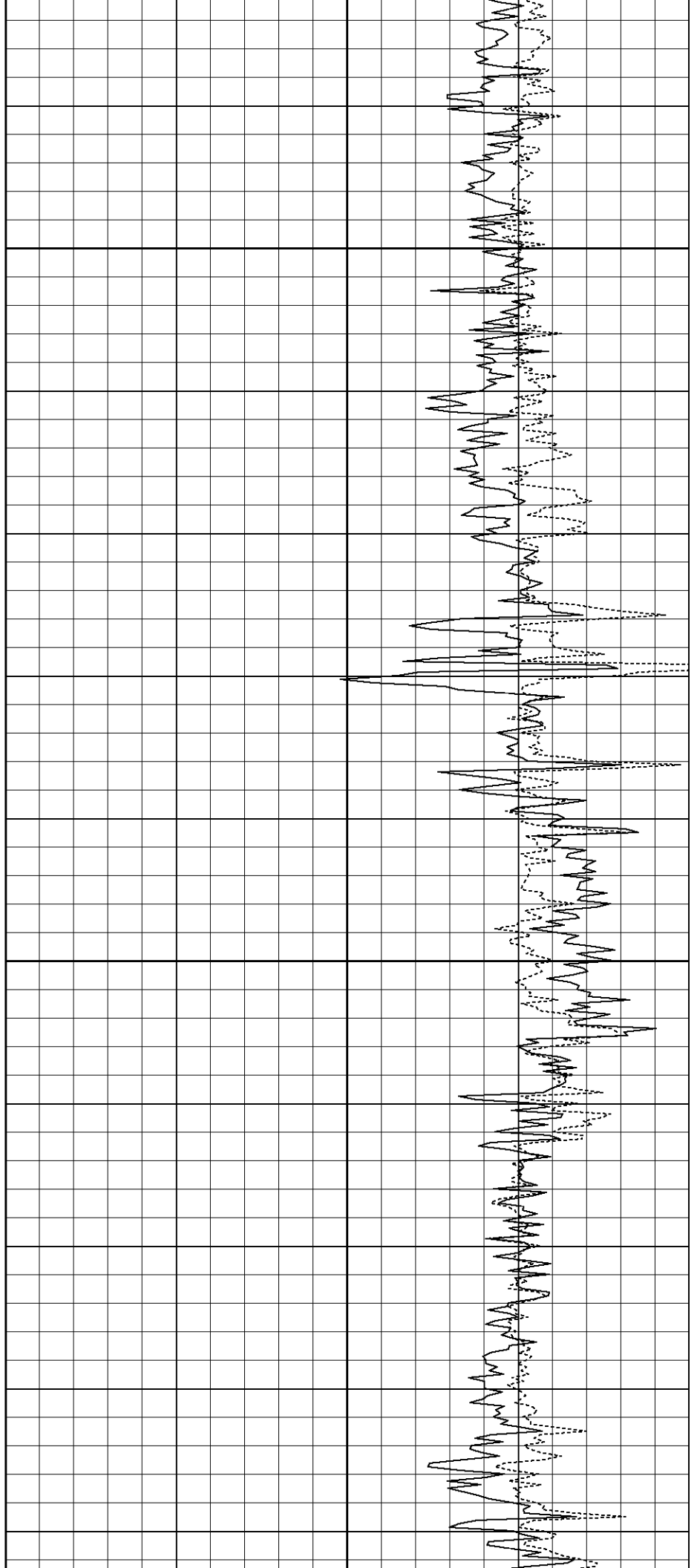
350

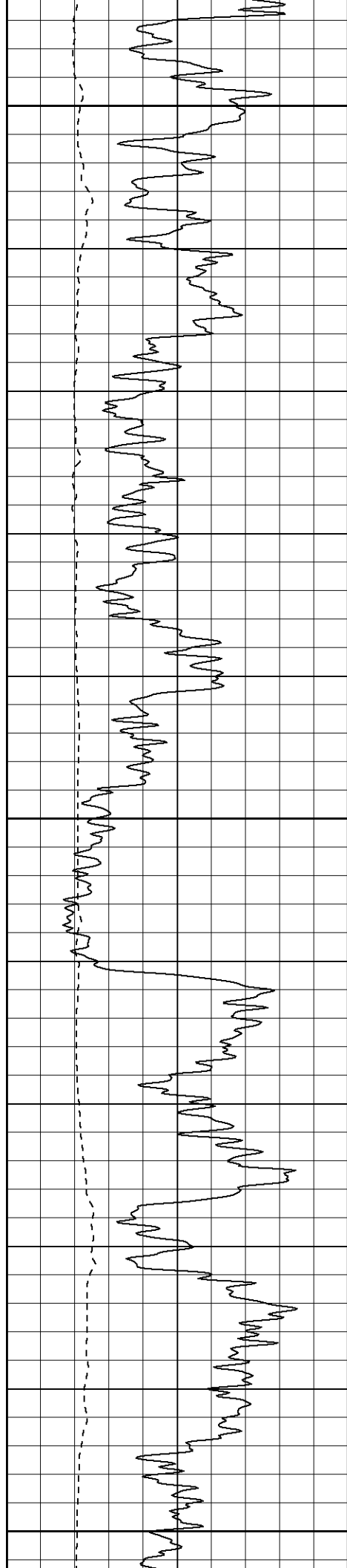




400

450

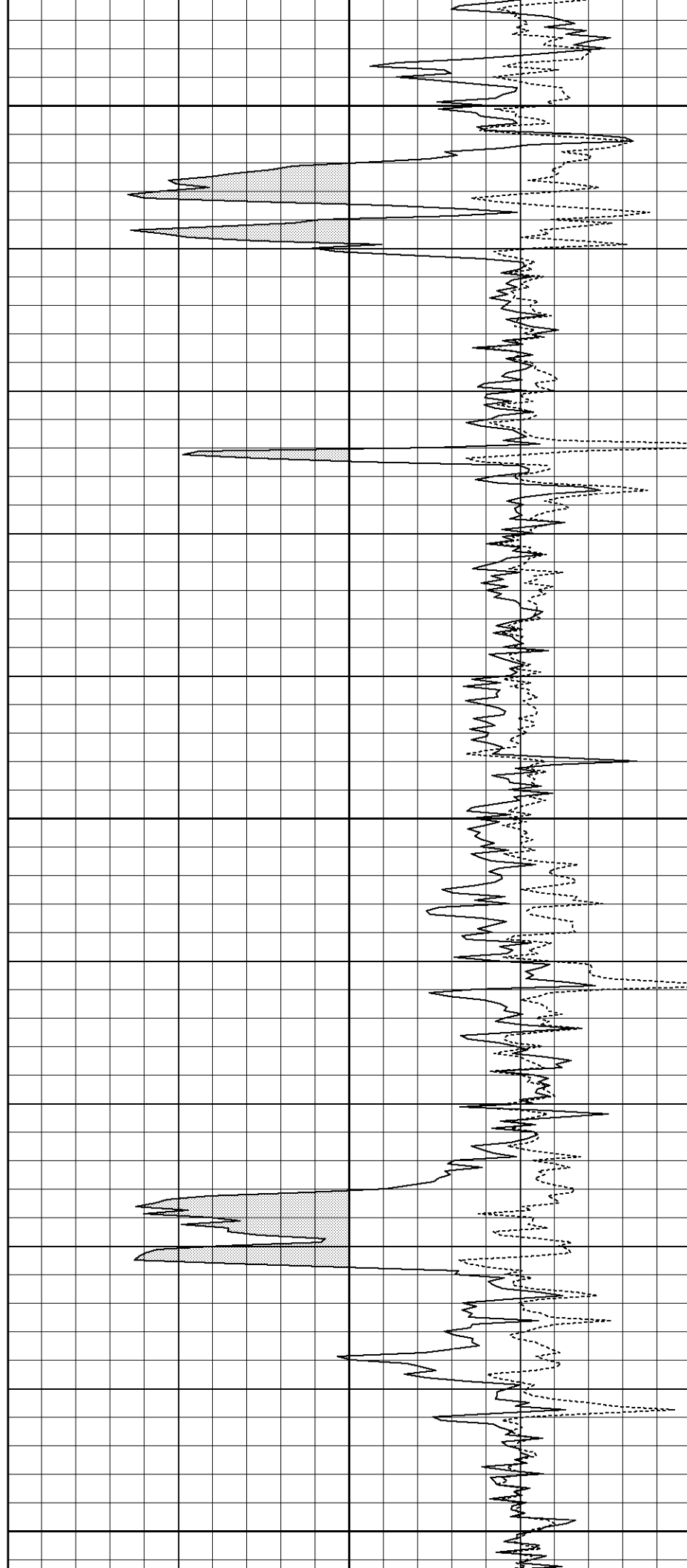


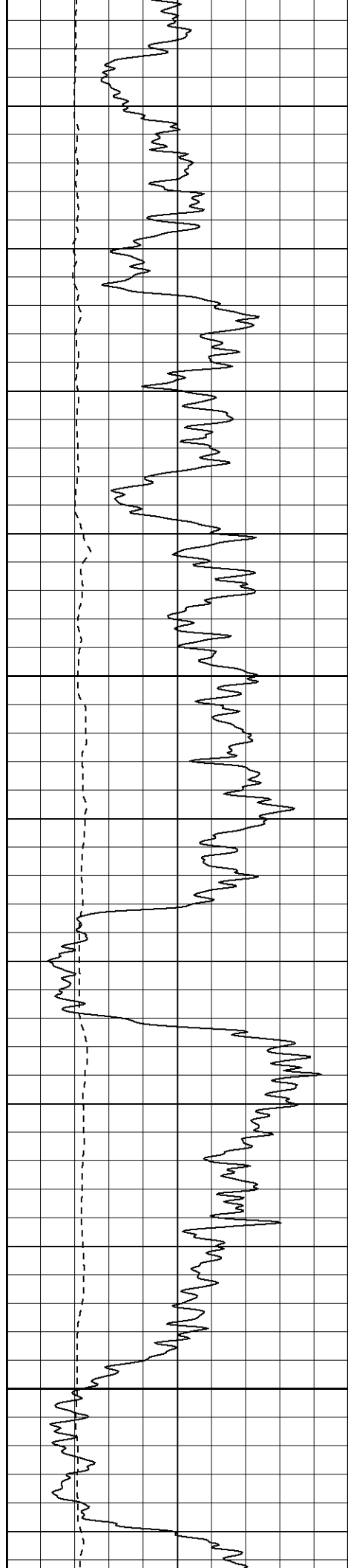


500

550

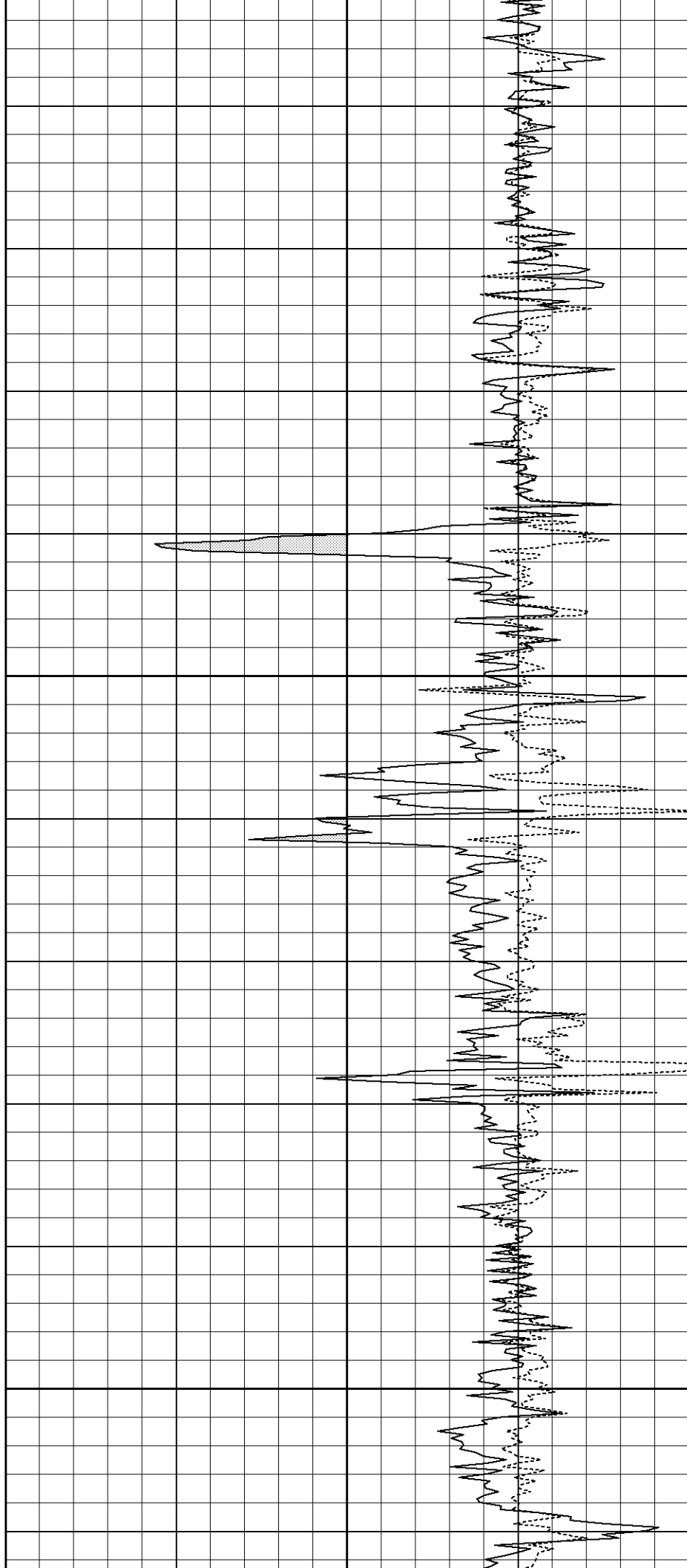
600

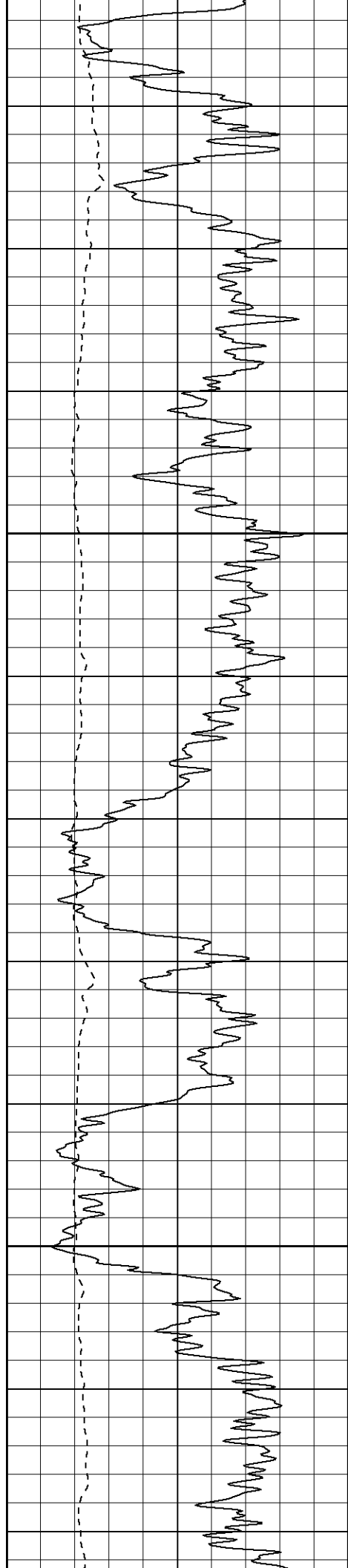




650

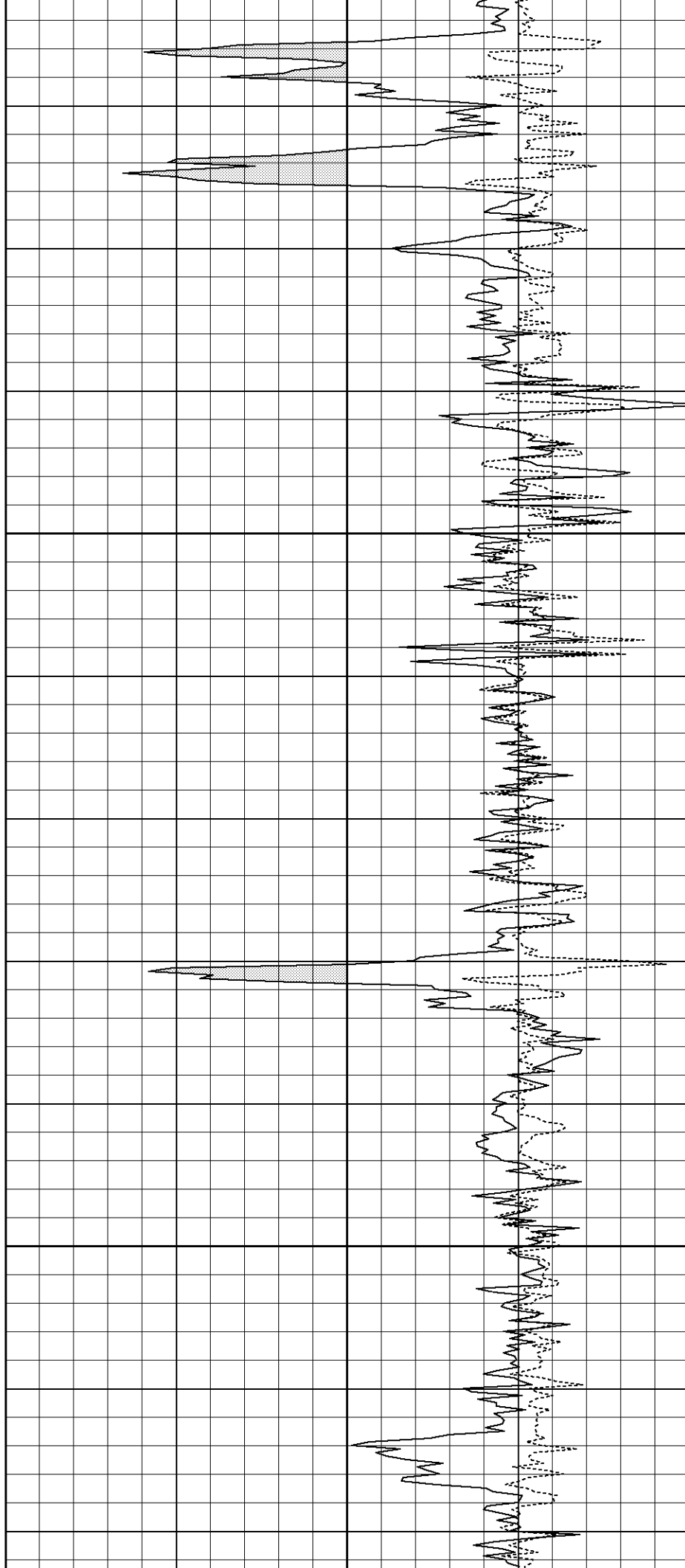
700

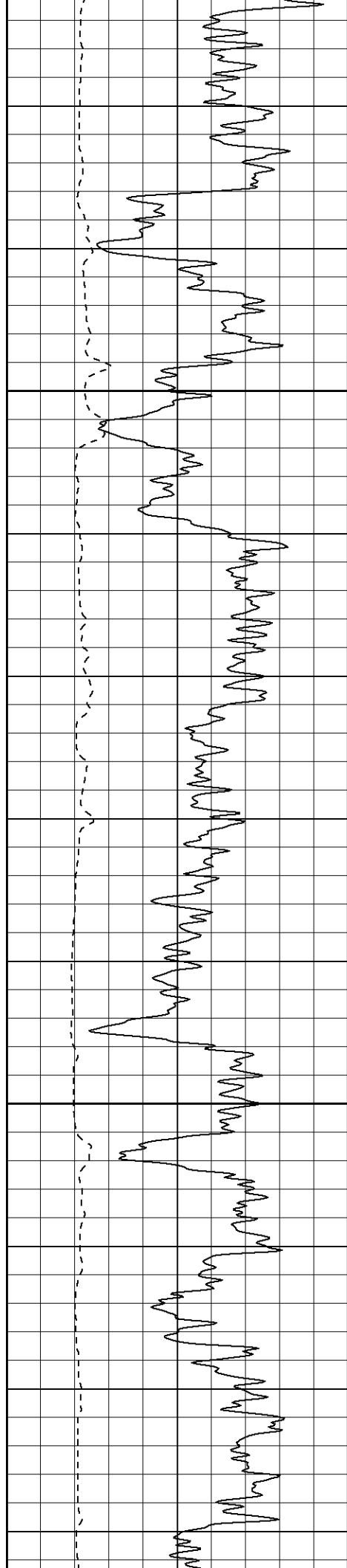




750

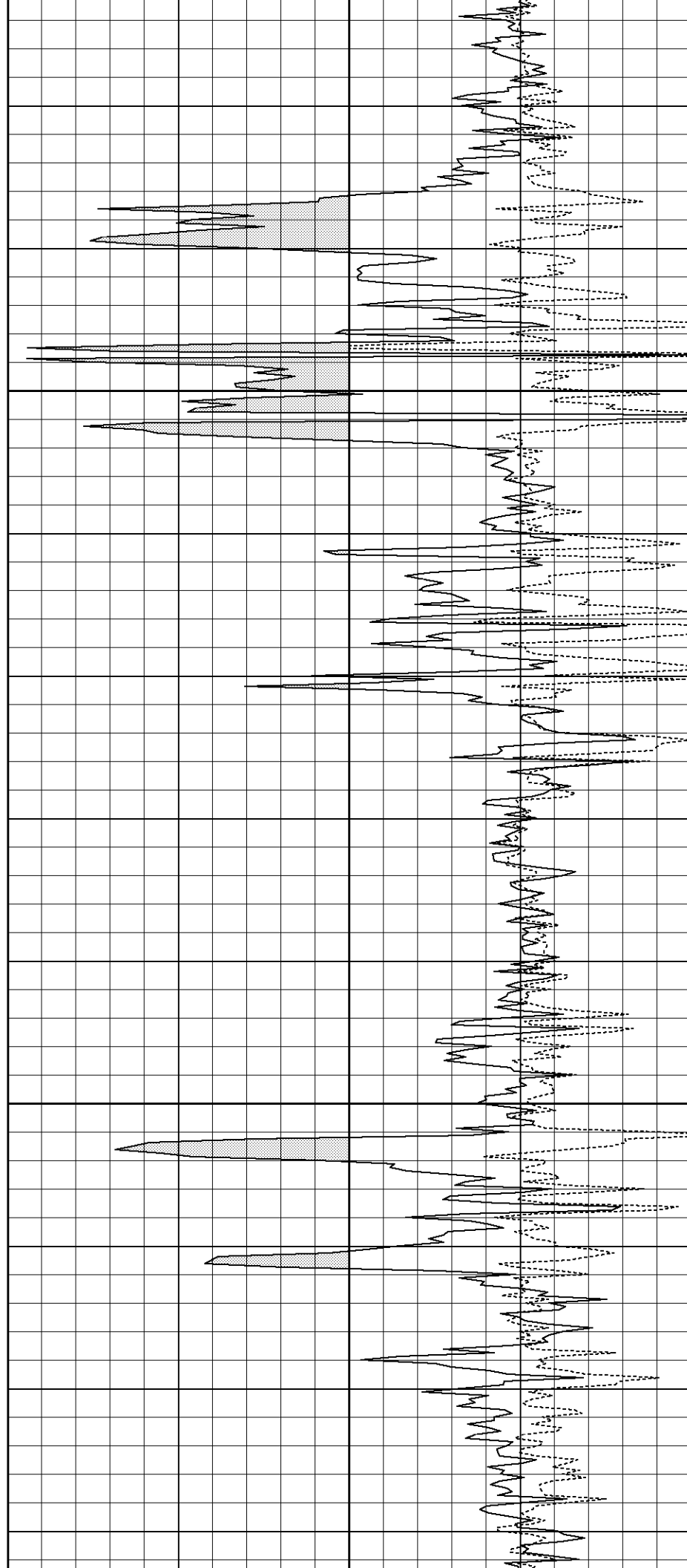
800

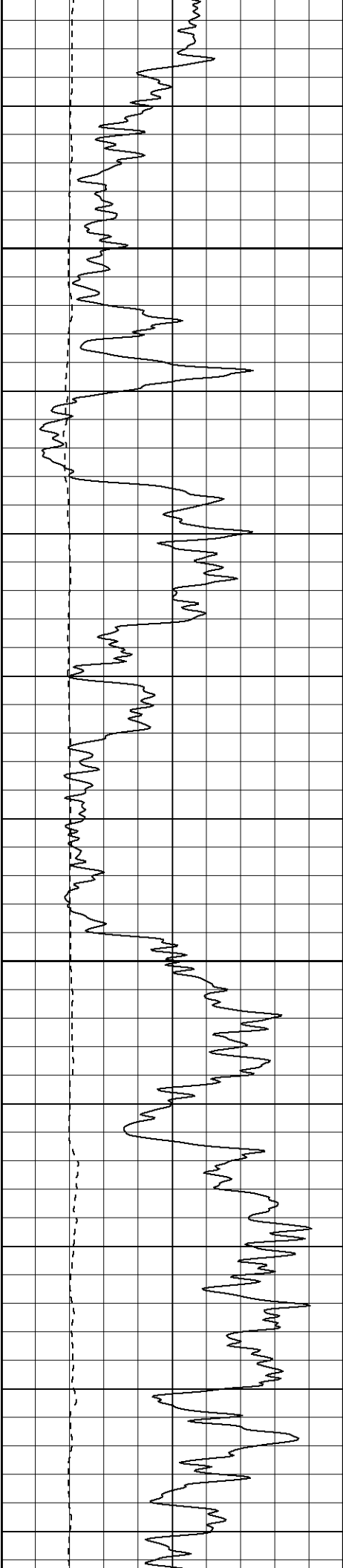




850

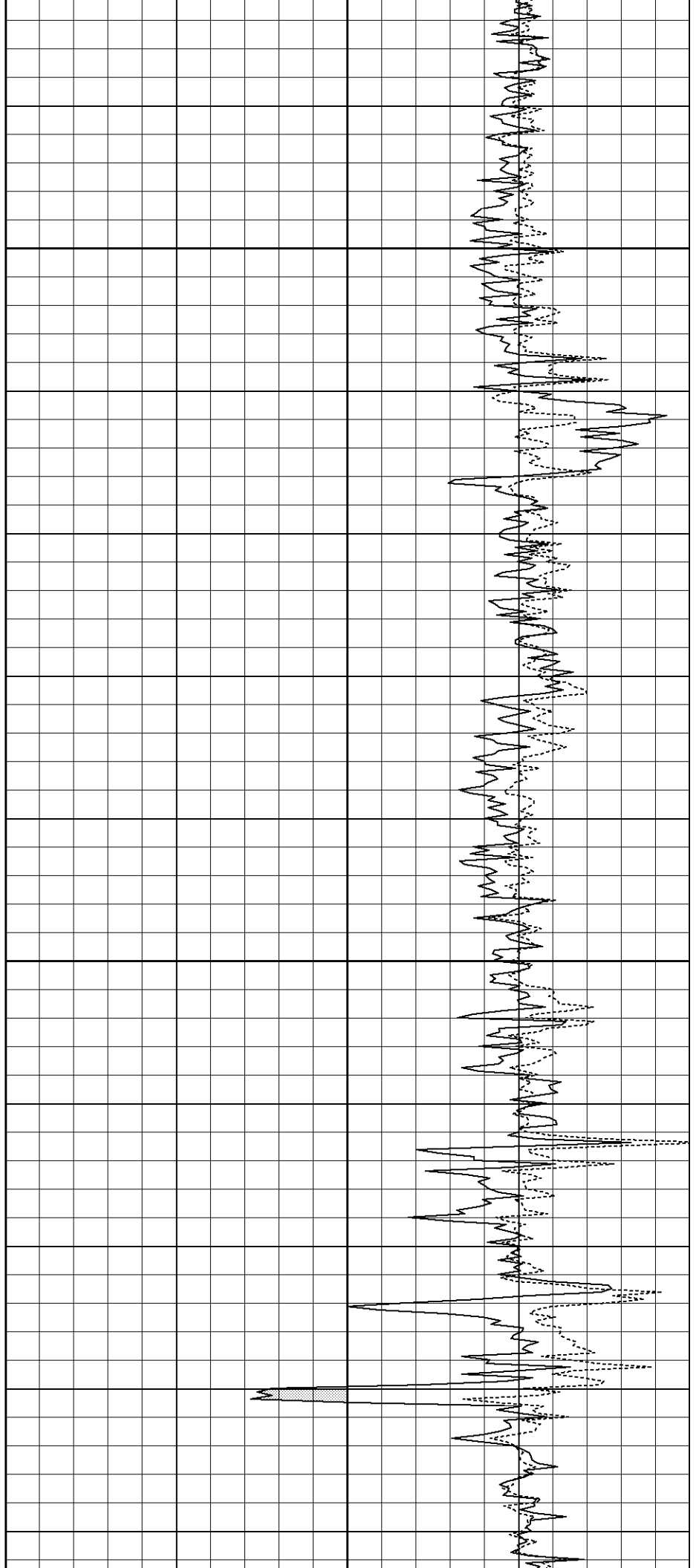
900

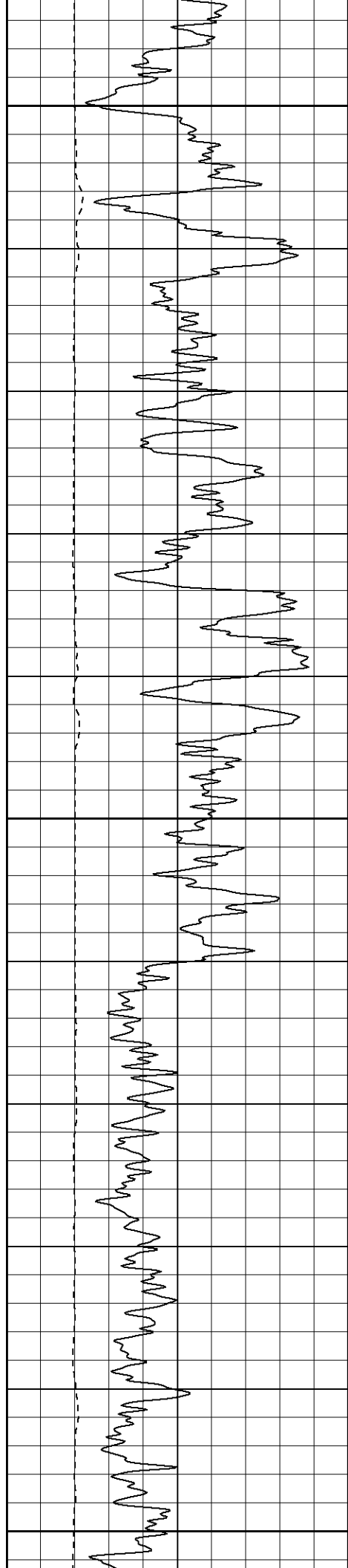




950

1000

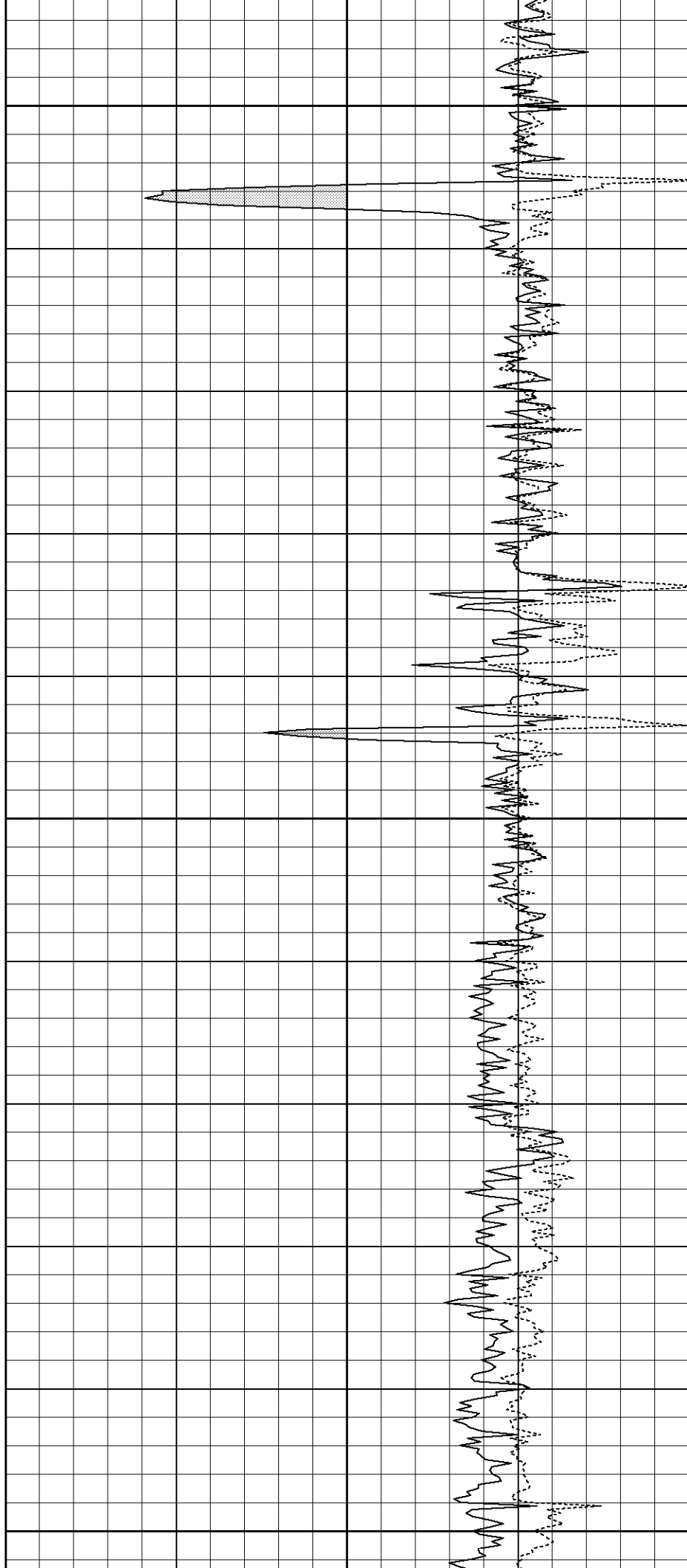


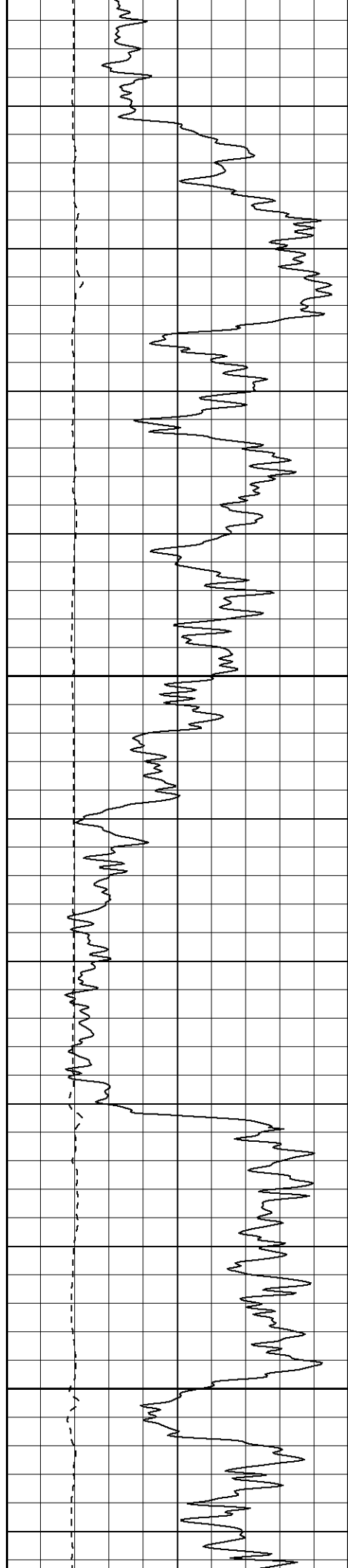


1050

1100

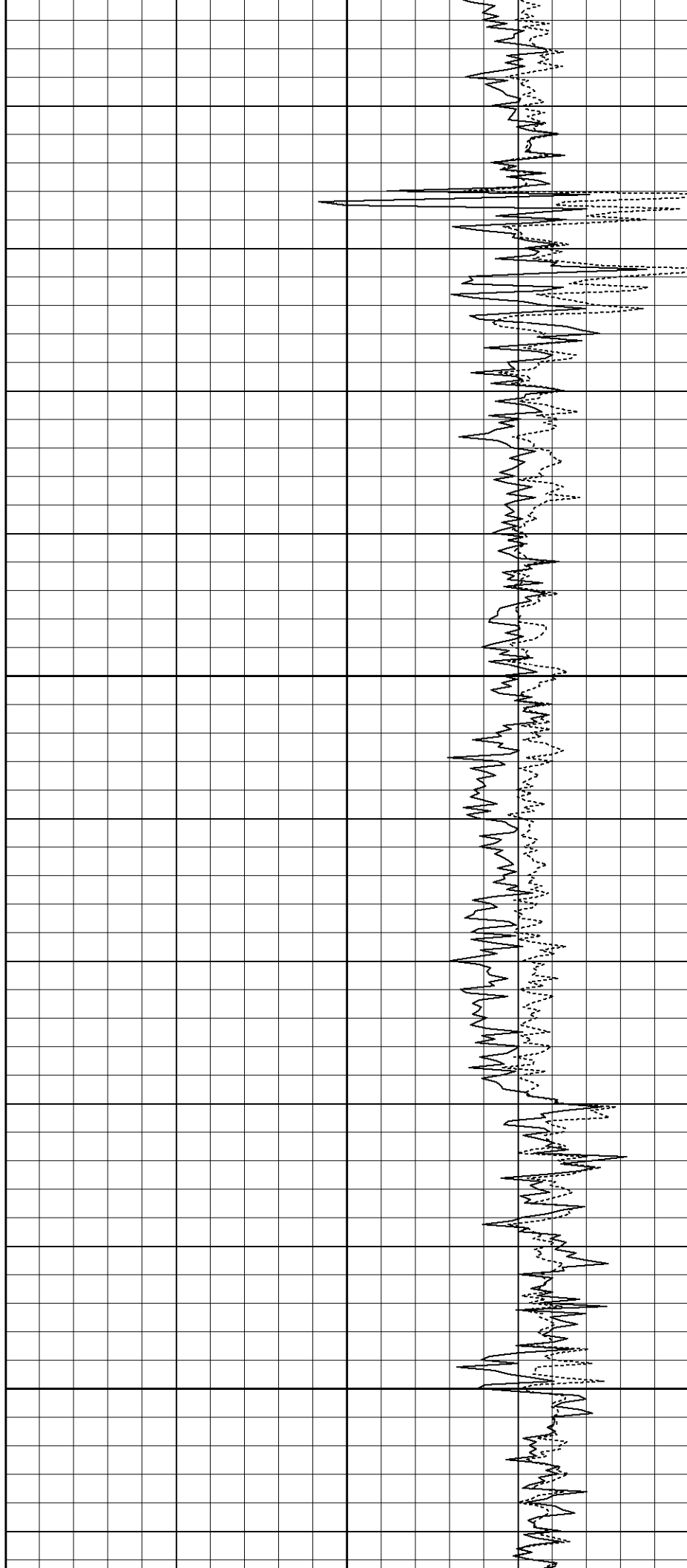
1150

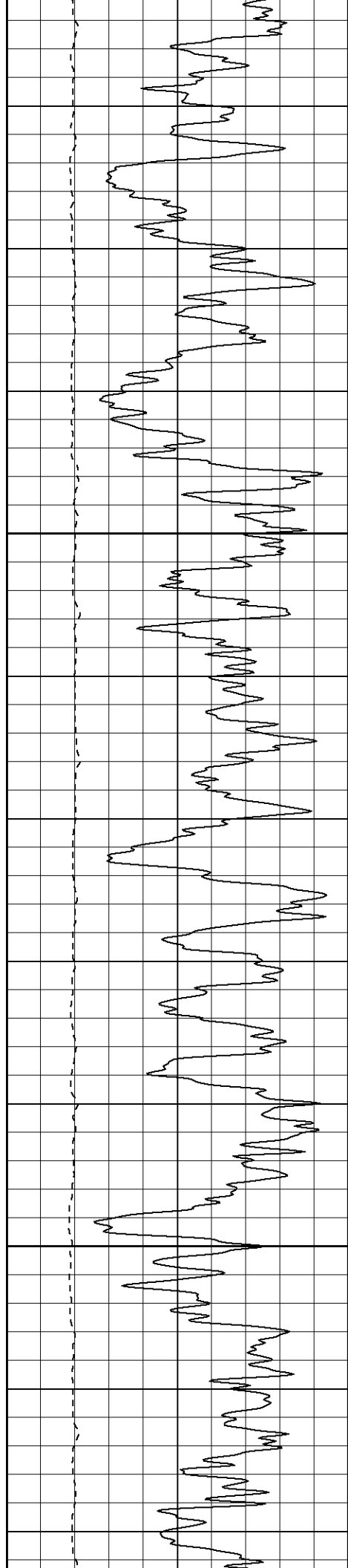




1200

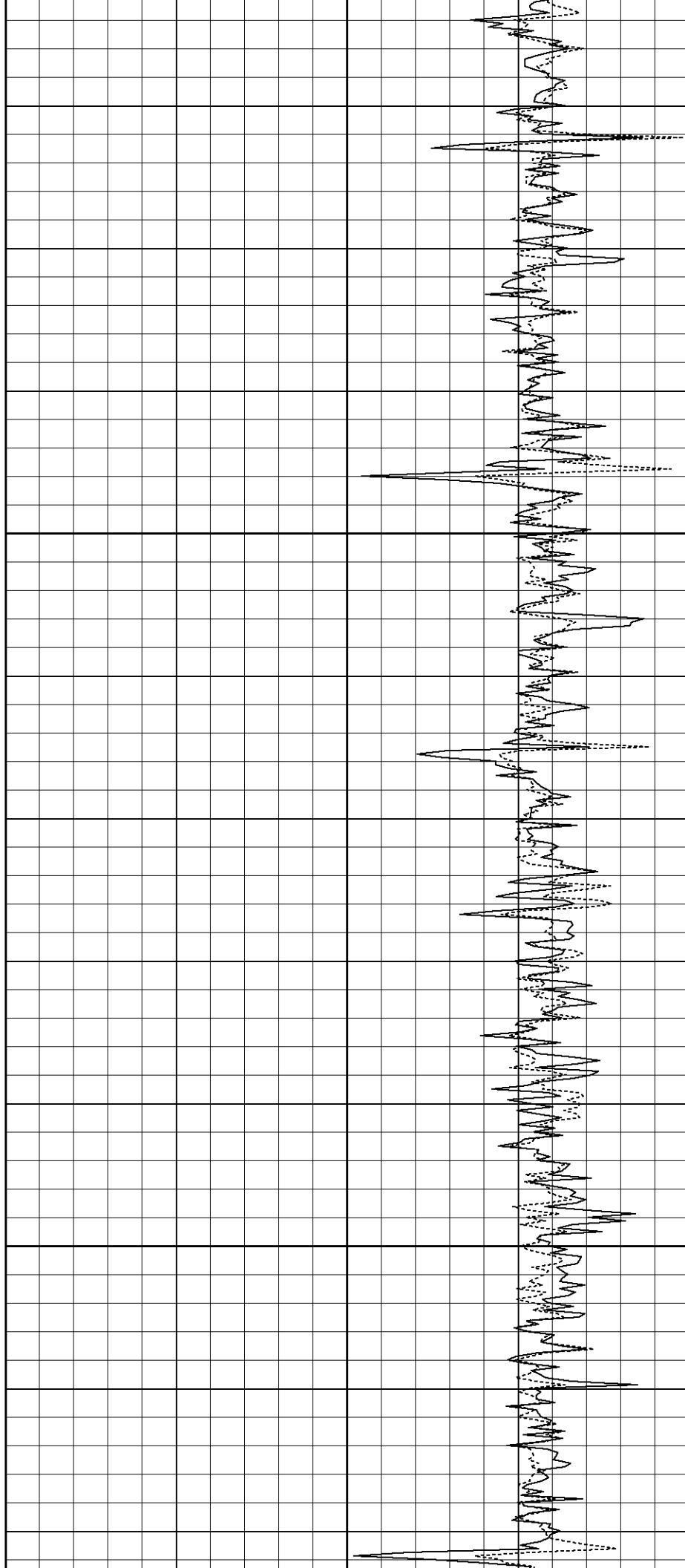
1250

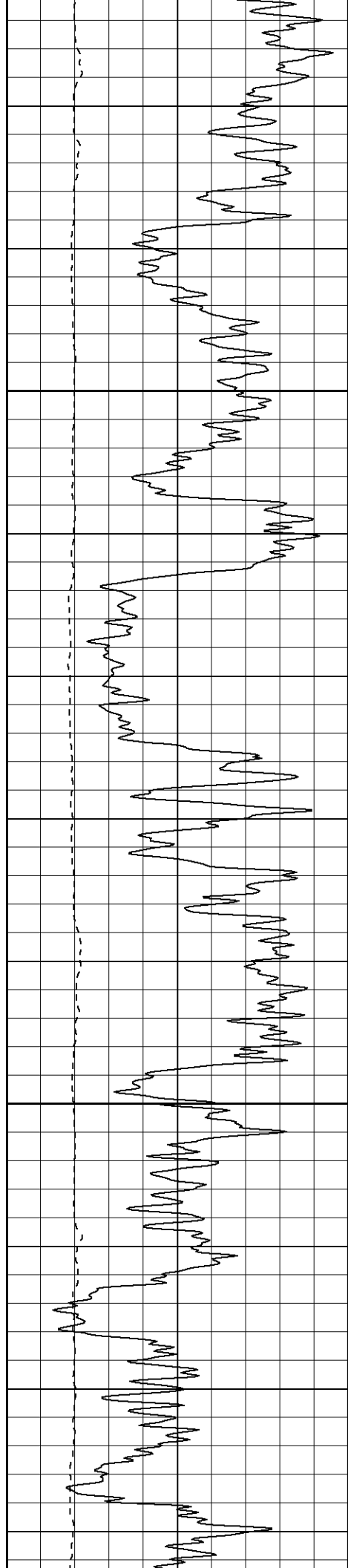




1300

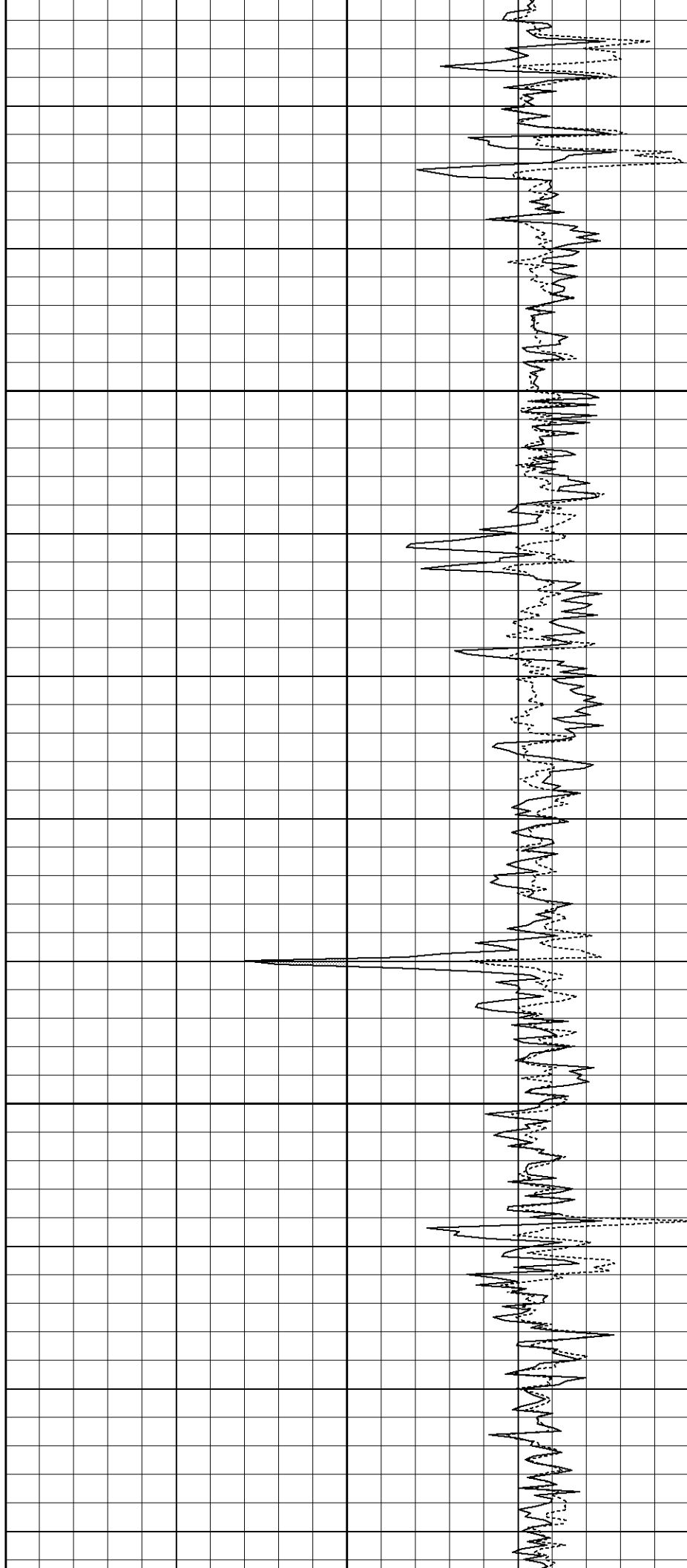
1350

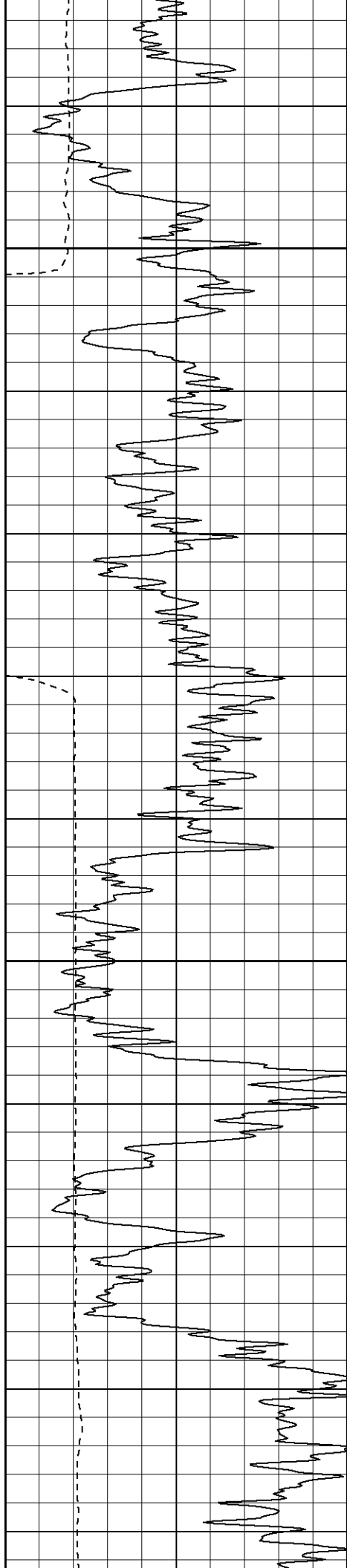




1400

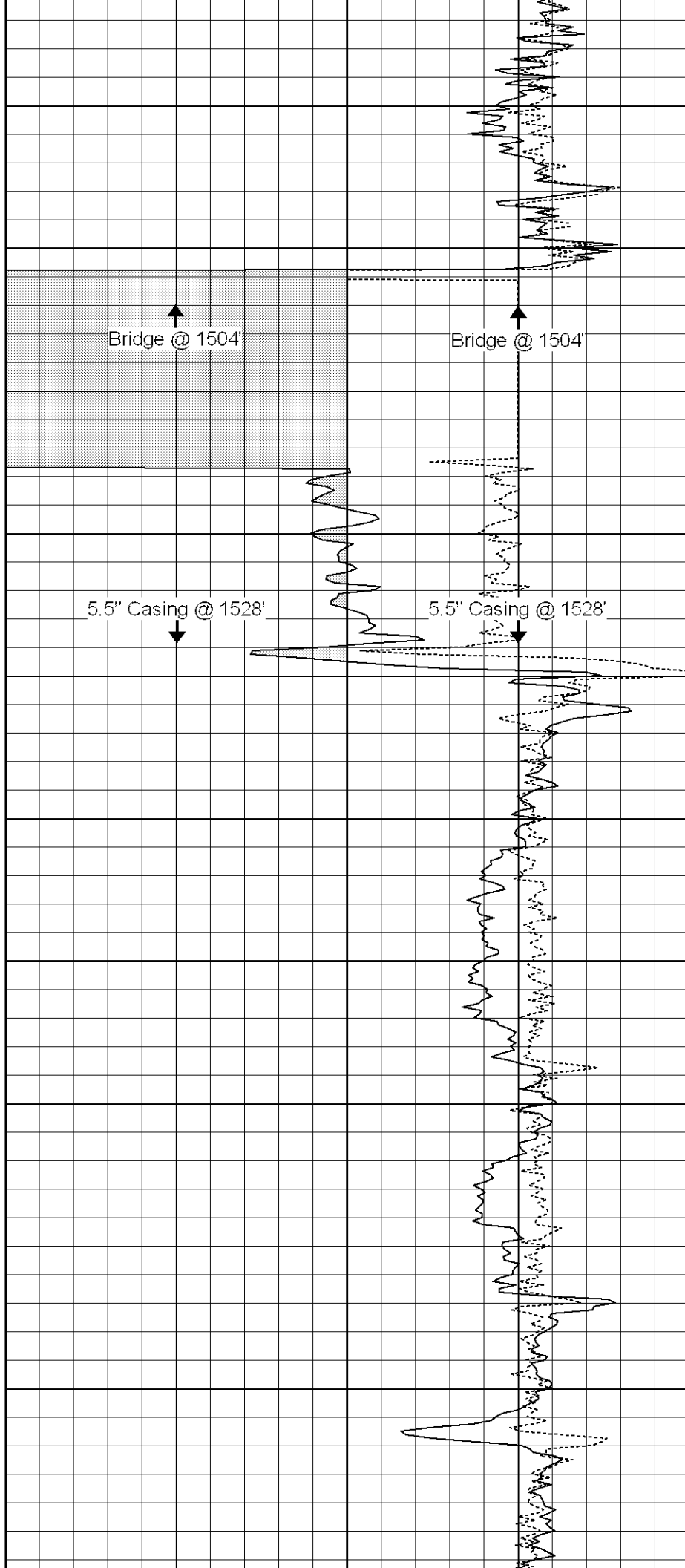
1450

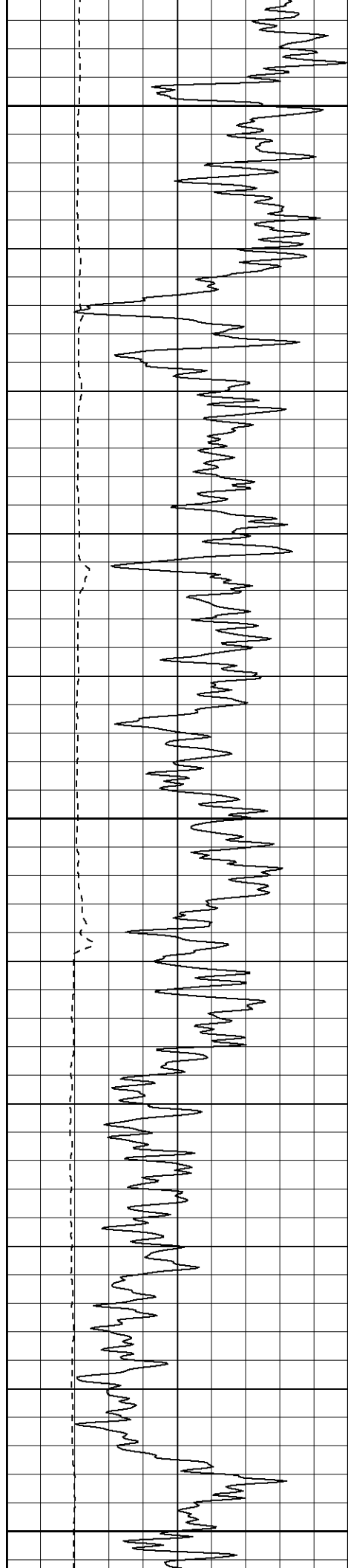




1500

1550

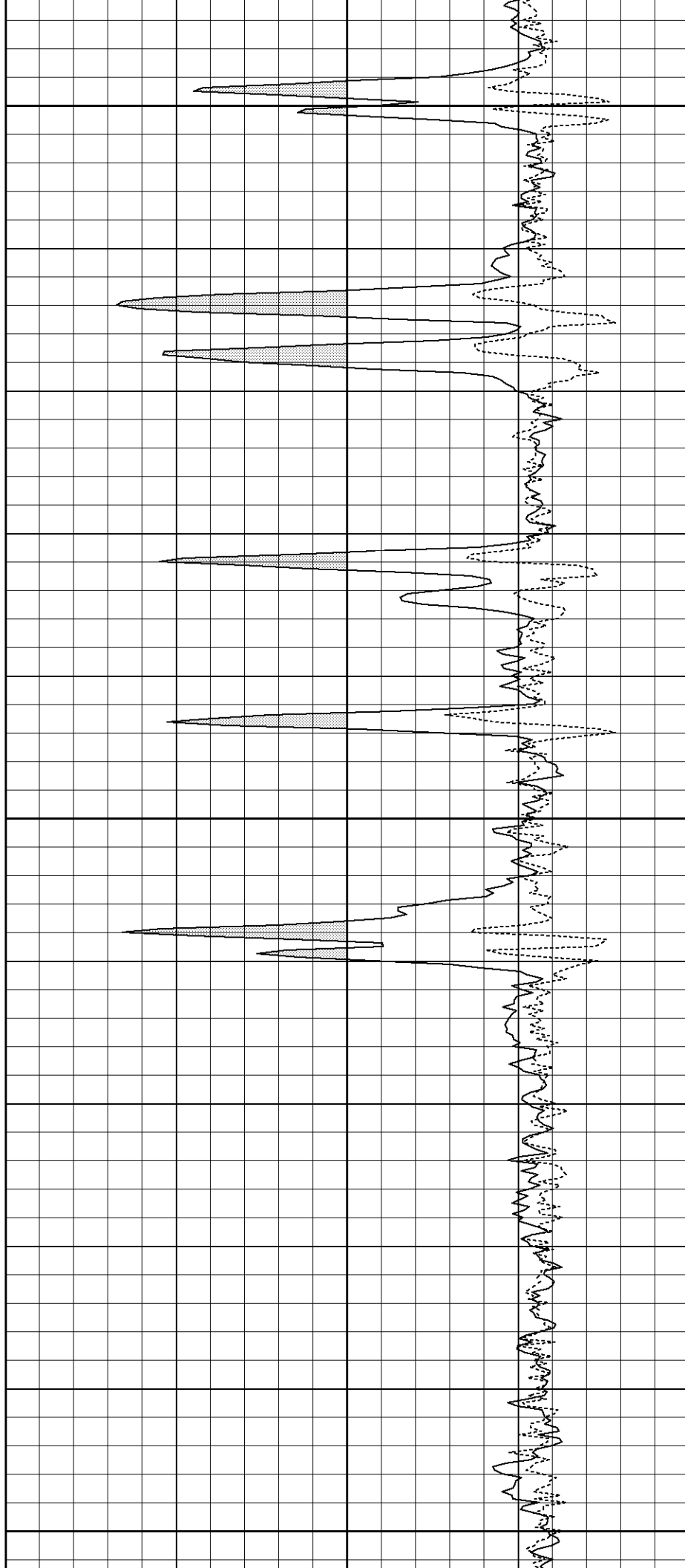


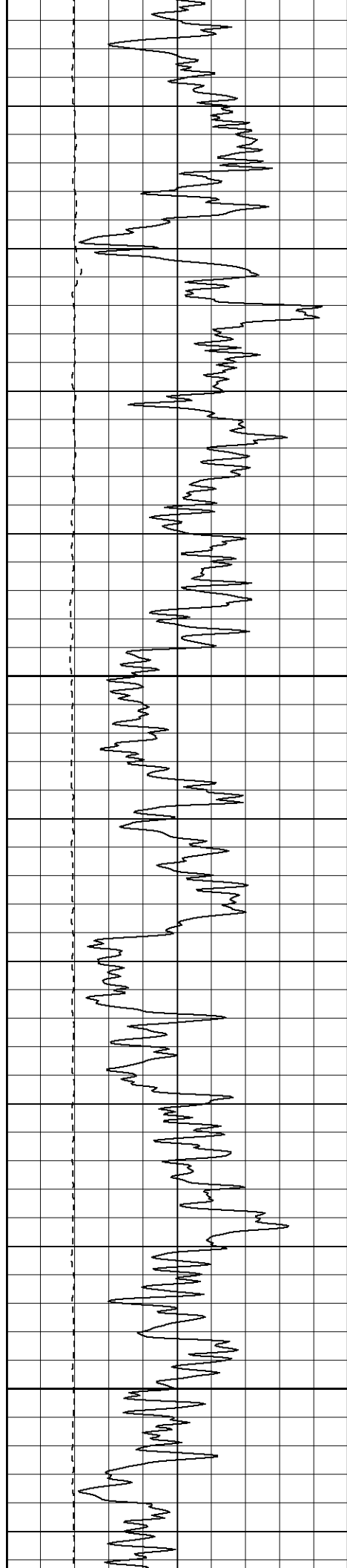


1600

1650

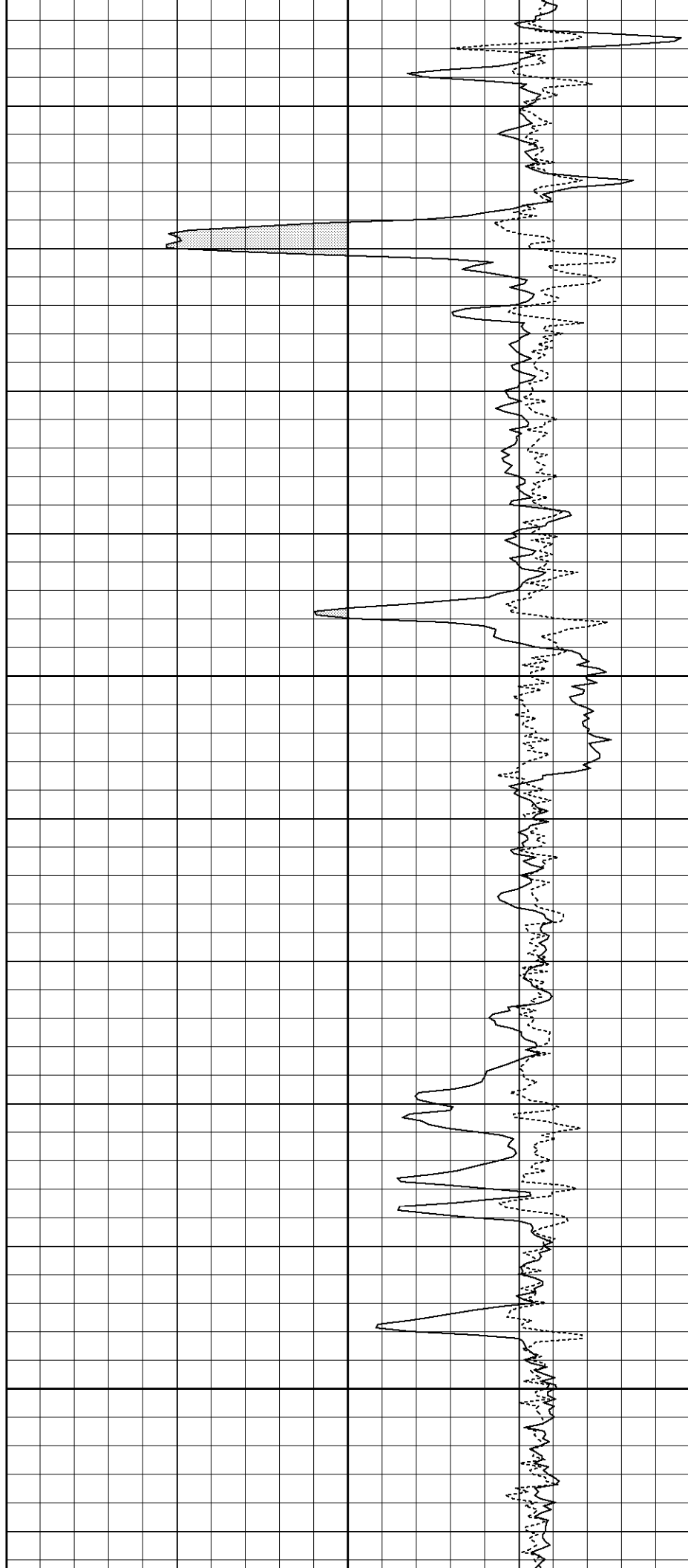
1700

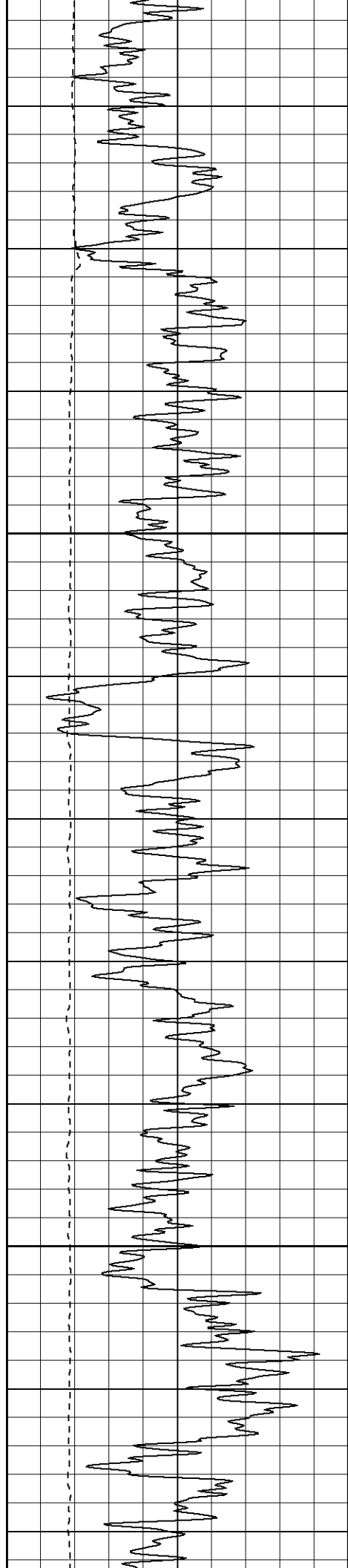




1750

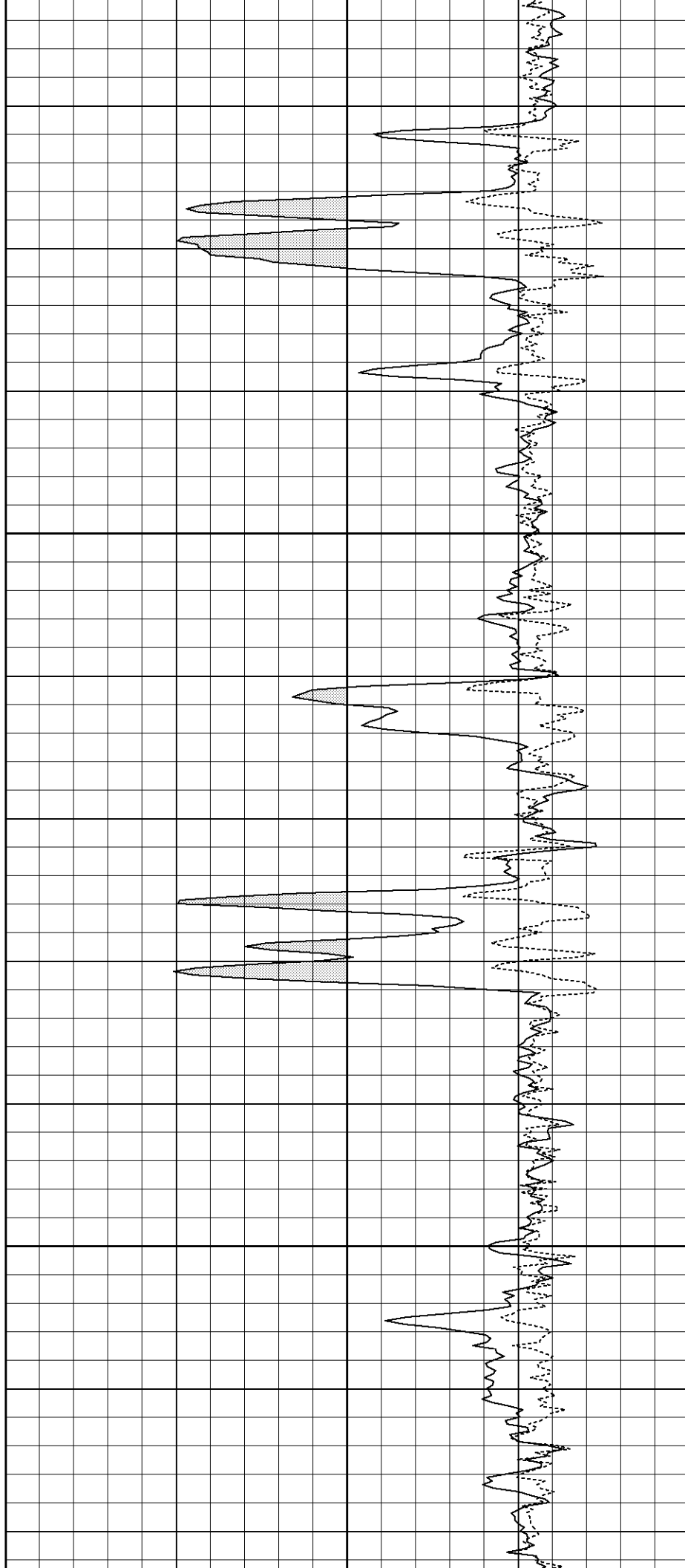
1800

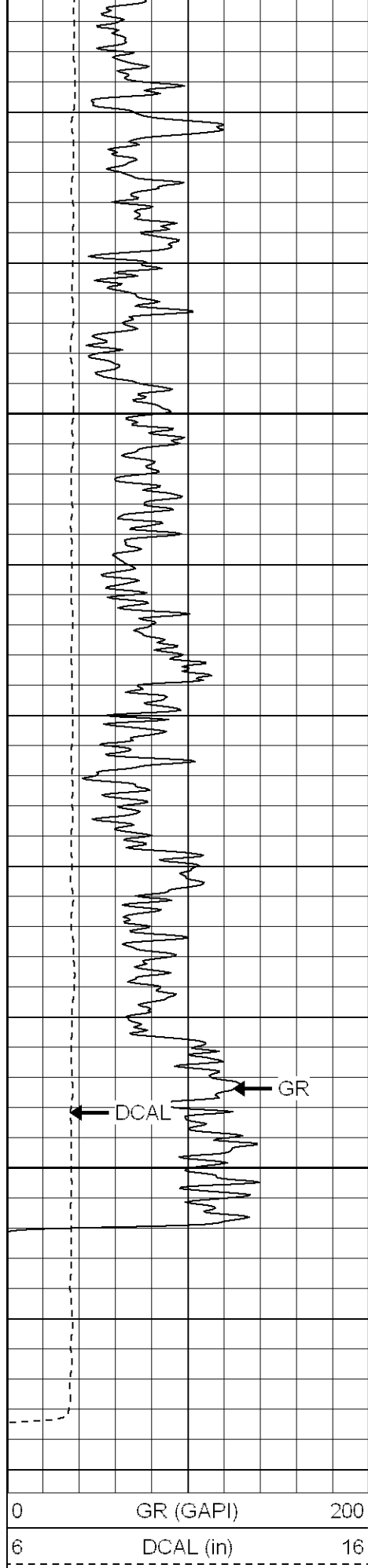




1850

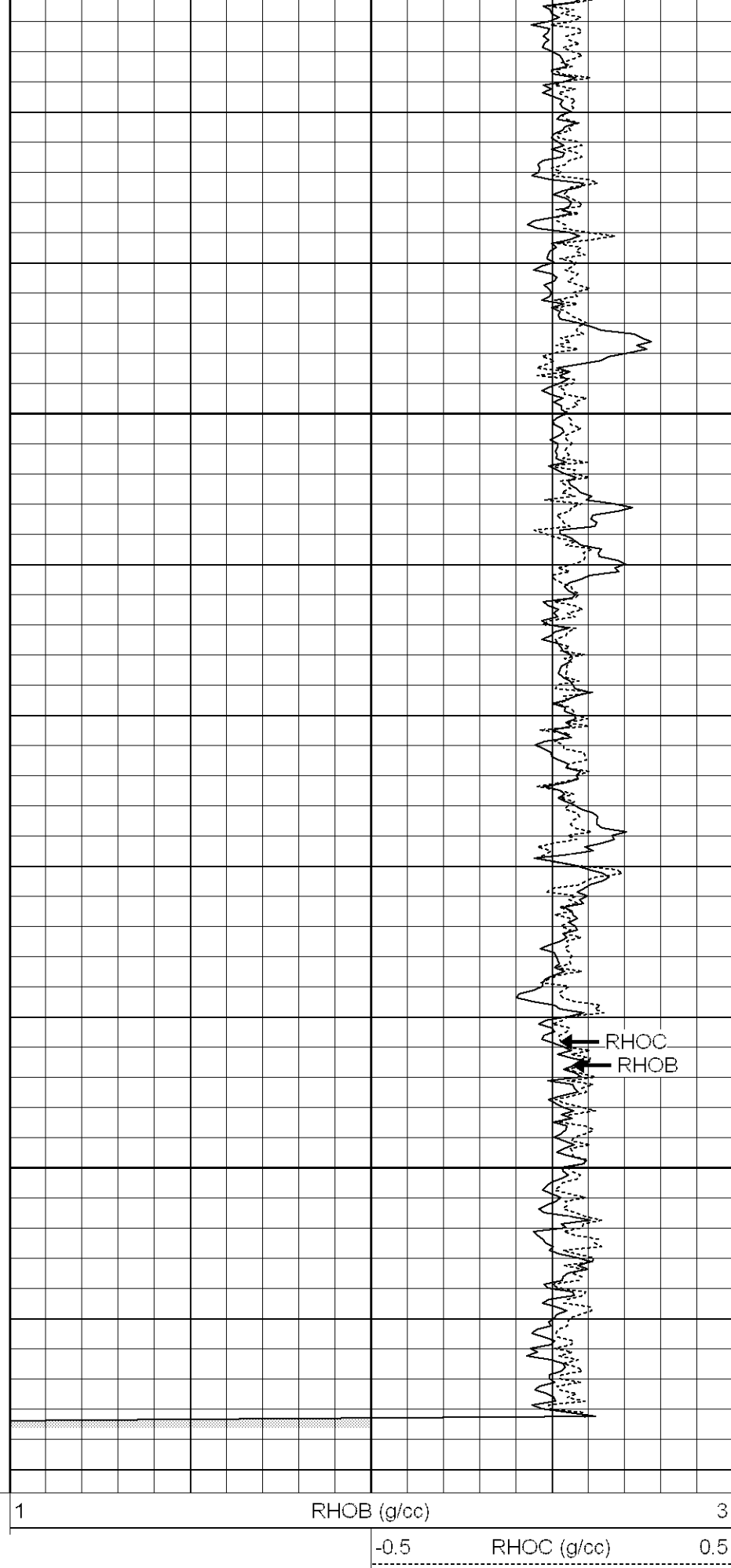
1900





1950

2000



Calibration Report

Database File: lorencito12-5-34-66.db
 Dataset Pathname: pass1
 Dataset Creation: Sat Jan 19 08:09:08 2008 by Log Open-Cased 070814

Induction Tool Calibration Report

Serial Number: 120
 Tool Model: G
 Downhole Cal Performed: Wed Jan 02 10:31:57 2008
 Surface Cal Performed: Wed Jan 02 10:31:36 2008

Surface Calibration:	Air	Loop	
Conductivity Reference:	0.000	500.000	mmho
Conductivity Reading:	0.006	0.642	V
Internal Reference:	Zero	Cal	
Conductivity Reference:	0.000	500.000	mmho
Conductivity Reading:	0.005	0.641	V

Downhole Calibration:	Internal Zero	Internal Cal	
Conductivity Reference:	-0.432	499.755	mmho
Conductivity Reading:	-0.086	499.856	V
Short Normal Reference:	2.000	17.000	Ohm-m
Short Normal Reading:	0.004	0.200	V

Results:	Gain	Offset
Loop Conductivity:	786.490	-4.700
Downhole Correction:	1.000	-0.346
Short Normal Resistivity:	76.754	1.667

Gamma Ray Calibration Report

Serial Number: 2000
 Tool Model: P2000
 Performed: Thu Jan 03 09:03:57 2008

Calibrator Value: 200.0 GAPI

Background Reading: 54.0 cps
 Calibrator Reading: 219.0 cps

Sensitivity: 0.2700 GAPI/cps

Sensor	Offset (ft)	Schematic	Description	Len (ft)	OD (in)	Wt (lb)
GR	12.54		GR-P2000 (2000)	3.50	3.25	40.00
W1	2.00					
W2	2.00					
W3	2.00					
W4	2.00					
SSD	2.00					
Q	2.00					
DCAL	2.00		LDT-PRB (001)	10.04	3.63	200.00

Dataset: lorencito12-5-34-66.db: field/well/run1/pass2
 Total Length: 13.54 ft
 Total Weight: 240.00 lb
 O.D. 3.63 in