

HALLIBURTON

ACOUSTIC CEMENT
BOND LOG

Company BILL BARRETT CORPORATION
 Well SCOTT 24A-25-692
 Field MAMM CREEK
 County GARFIELD State CO

Company BILL BARRETT CORPORATION
 Well SCOTT 24A-25-692
 Field MAMM CREEK
 County GARFIELD State CO

API No.: 050451465000 Serv #: 5706595
 Location: SURFACE:
 0328' FSL & 2356' FEL

Other Services

BOTTOM:
 0110' FSL & 2013' FWL

RMTE

Sec: 25 Twp:06S Rge: 92W

Permanent Datum

GROUND LEVEL Elevation 5628'

Elevation

Log Measured From KB , 15 Ft. above perm. datum

Drilling Measured From KB

K.B. 5643'
D.F. 5642'
G.L. 5628'

Date @ Time Logged 24 FEB 2008 @ 08:30

Type Fluid in Hole

FRESH WATER

Run No. ONE

Density of Fluid

8.4 PPG

Depth - Driller 7249'

Fluid Level

FULL

Depth - Logger 7170'

Cement Top Est. Logged

3900'

Bottom - Logged Interval 7162'

Equipment / Location

10026060 / GU

Top - Log Interval 3700'

Recorded by

D. BARNES

Max. Recorded Temp. 210 F

Witnessed by

N/A

CEMENTING DATA

Protection

Liner

Date / Time Cemented

String

String

Primary / Squeeze

String

Expected

String

Compressive Strength

psi@ hrs

psi@ hrs

Cement Volume

psi@ hrs

psi@ hrs

Cement Type / Weight

psi@ hrs

psi@ hrs

Formulation

psi@ hrs

psi@ hrs

Mud Type / Mud Wgt.

psi@ hrs

psi@ hrs

Run Number

psi@ hrs

psi@ hrs

ONE

psi@ hrs

psi@ hrs

TWO

psi@ hrs

psi@ hrs

<<< Fold Here >>>

HALLIBURTON DOES NOT GUARANTEE THE ACCURACY OF ANY INTERPRETATION OF THE LOG DATA, CONVERSION OF LOG DATA TO PHYSICAL ROCK PARAMETERS OR RECOMMENDATIONS WHICH MAY BE GIVEN BY HALLIBURTON PERSONNEL OR WHICH APPEAR ON THE LOG OR IN ANY OTHER FORM. ANY USER OF SUCH DATA, INTERPRETATIONS, CONVERSIONS, OR RECOMMENDATIONS AGREES THAT HALLIBURTON IS NOT RESPONSIBLE EXCEPT WHERE DUE TO GROSS NEGLIGENCE OR WILLFUL MISCONDUCT, FOR ANY LOSS, DAMAGES, OR EXPENSES RESULTING FROM THE USE THEREOF.

Comments

CBL/GR/CCL RAN IN COMBINATION

CORRELATED TO WEATHERFORD TEMPERATURE/CCL LOG DATED 5 FEB 2008

LOG INTERVALS PER CUSTOMER REQUEST

SHORT JOINT: 5147' TO 5177' & 6825' TO 6855'

YOUR CREW TODAY: J. STEWART, R. COSSEY, C. LARSEN

****THANK YOU FOR CHOOSING HALLIBURTON ENERGY SERVICES; GRAND JUNCTION, CO****

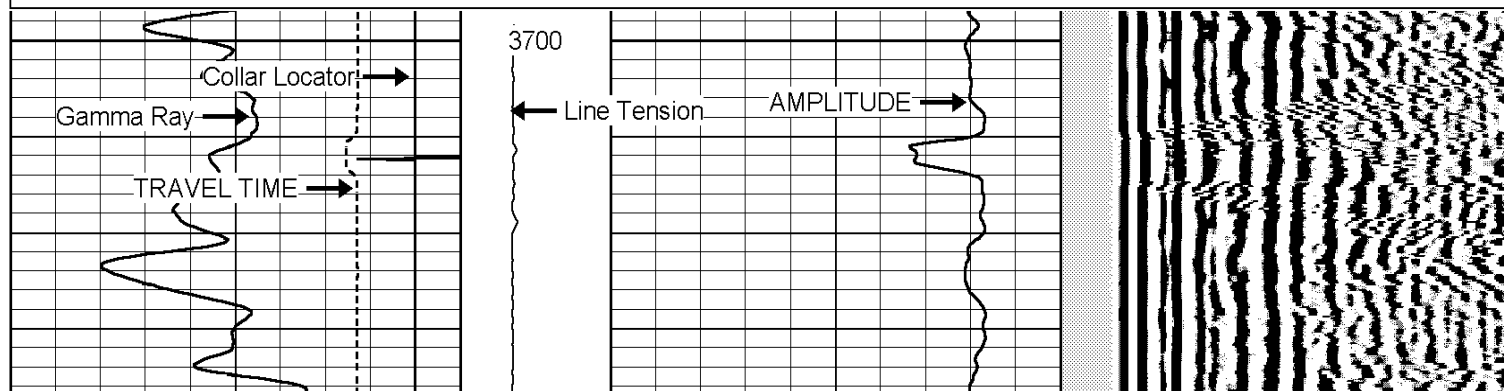
*** (970) 523 - 3600 ***

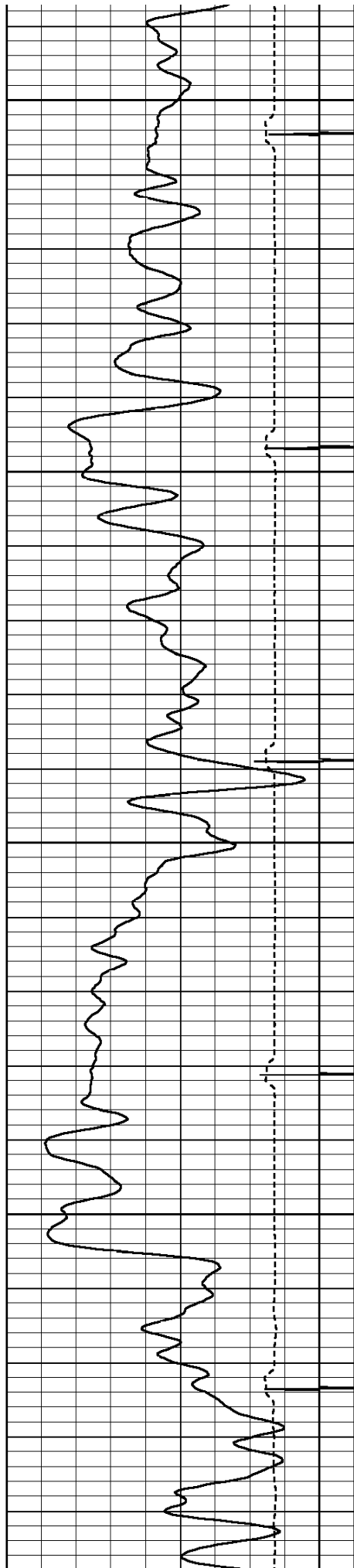
The Well Name, Location, Borehole Description, and / or Cementing Data Furnished by Client							
EQUIPMENT DATA							
GR		CCL		CBL			
Run No.	ONE	Run No.	ONE	Run No.	ONE	Run No.	
Serial No.	400	Serial No.	400	Serial No.	400	Serial No.	
Model No.	CBL_DC	Model No.	CBL_DC	Model No.	CBL_DC	Model No.	
Diameter	3.25"	Diameter	3.25"	Diameter	3.25"	Diameter	
LOGGING DATA							
General Data							
Pass	Depths		Well Head	Speed	Logging Run Comments		
No.	From	To	Pressure	Ft/Min			
ONE			0 PSI	60	MAIN LOG SECTION		
	GR		CCL		AMPLITUDE		
Pass	Scale		Scale		Scale		Scale
No.	L	R	L	R	L	R	L
ONE	0	200	-9	1	0	100	
DIRECTIONAL INFORMATION							
Maximum Deviation			deg. @		KOP		

<h1 style="margin: 0;">HALLIBURTON</h1>	<h2 style="margin: 0;">ACOUSTIC CEMENT BOND LOG</h2> <p style="margin: 10px 0 0 0;">MAIN LOG SECTION</p> <p style="margin: 0 0 0 0;">5"=100'</p>
---	--

Database File: scott_24a_25_692_cbl.db
Dataset Pathname: CBL/F_CBL
Presentation Format: cbl_main
Dataset Creation: Sun Feb 24 09:47:28 2008 by Calc Halliburton Casedho
Charted by: Depth in Feet scaled 1:240

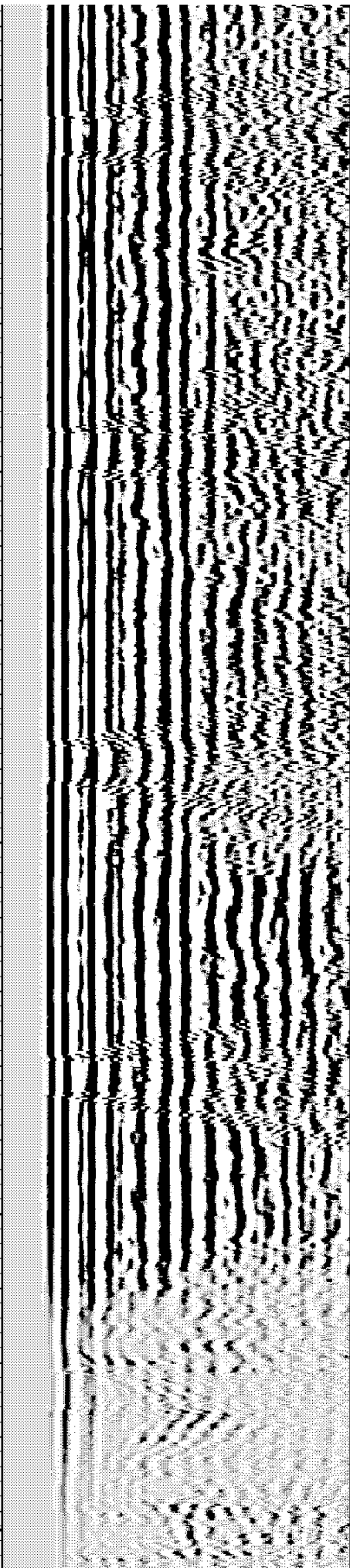
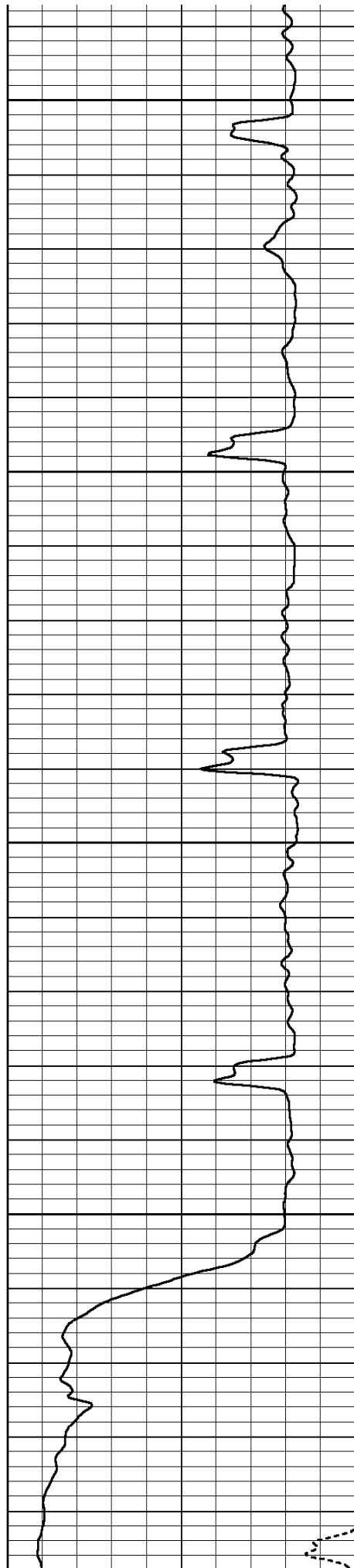
360	TRAVEL TIME (usec)	160	TENSION	0	AMP AMPLITUDE (mV)	10	200	MSG	1200
-9	Collar Locator	1	0	(lb)2000	0	AMPLITUDE (mV)	100		
0	Gamma Ray (GAPI)	200							

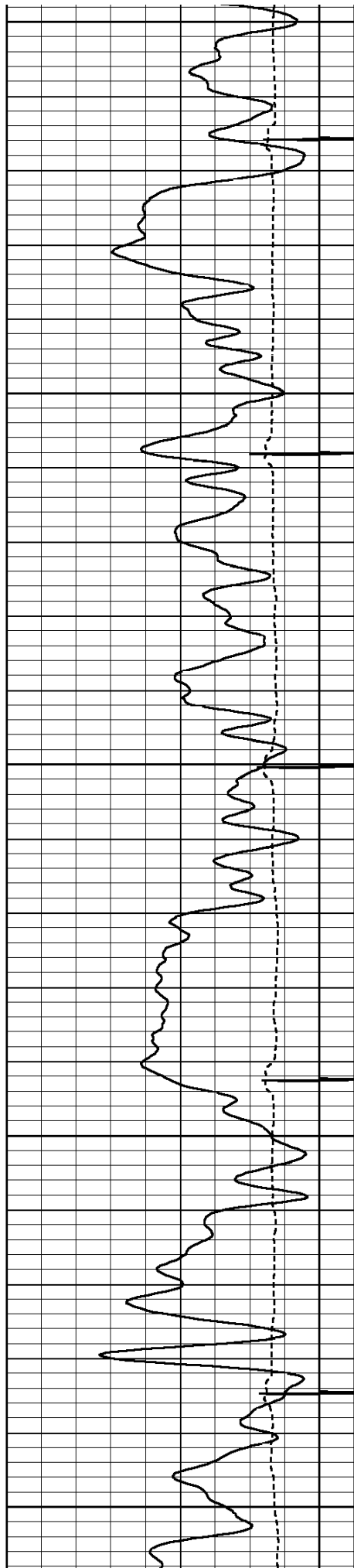




3800

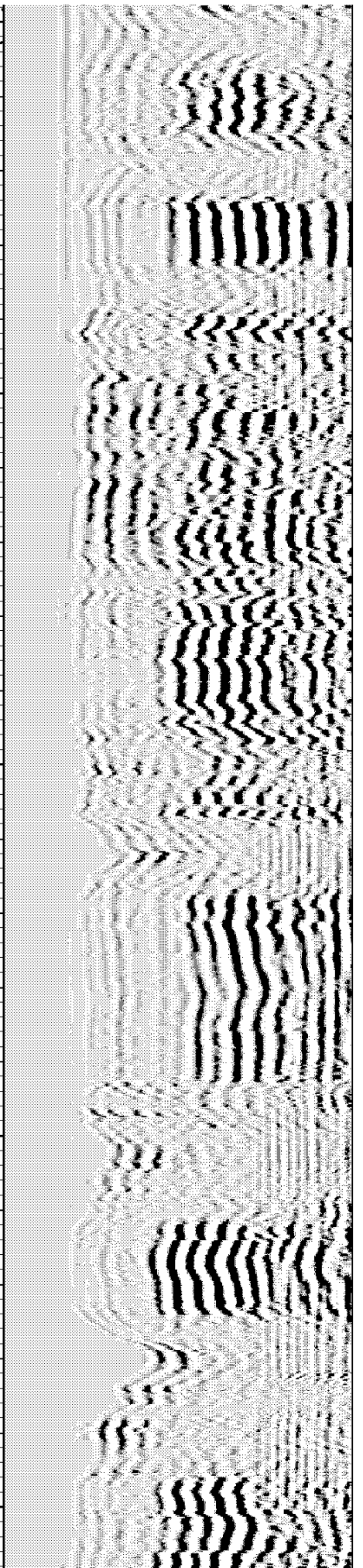
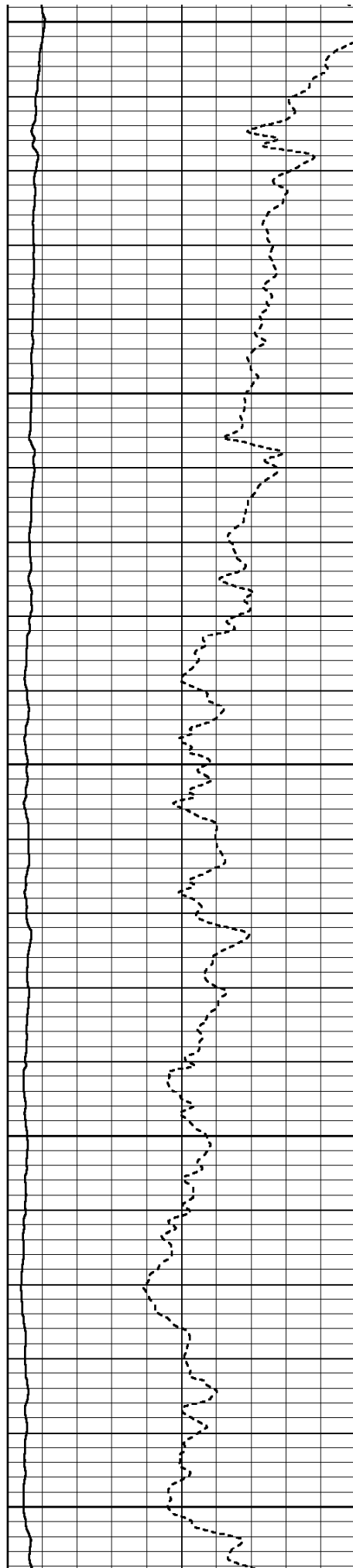
3900

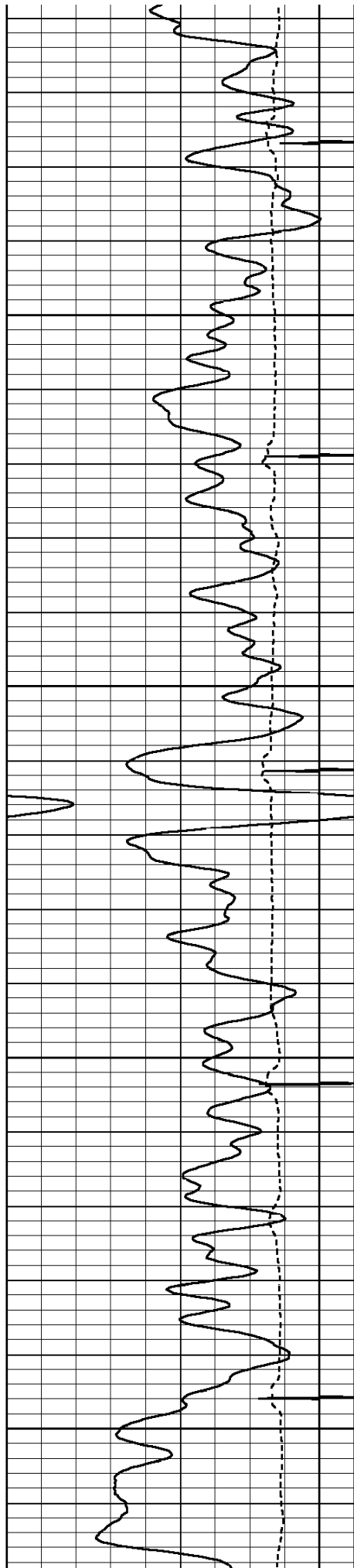




4000

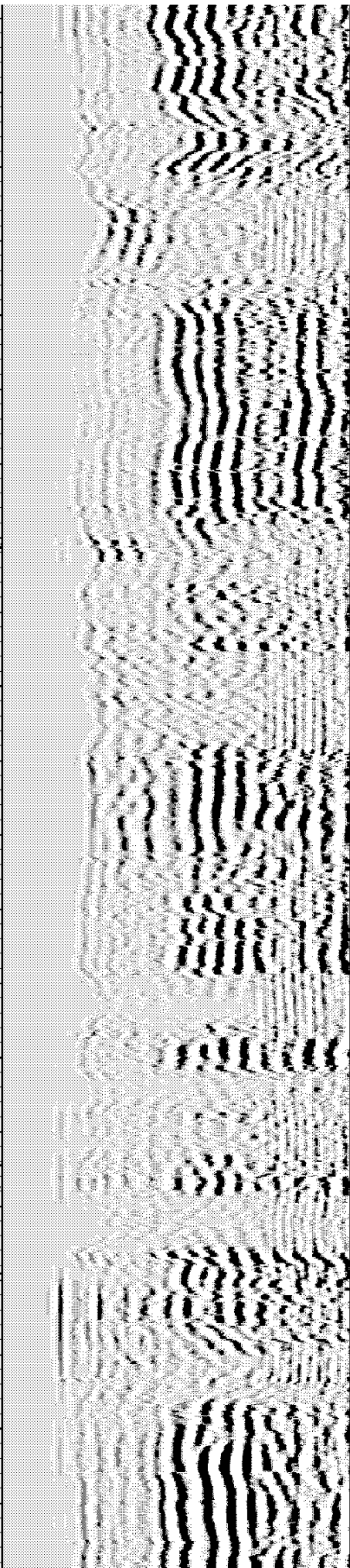
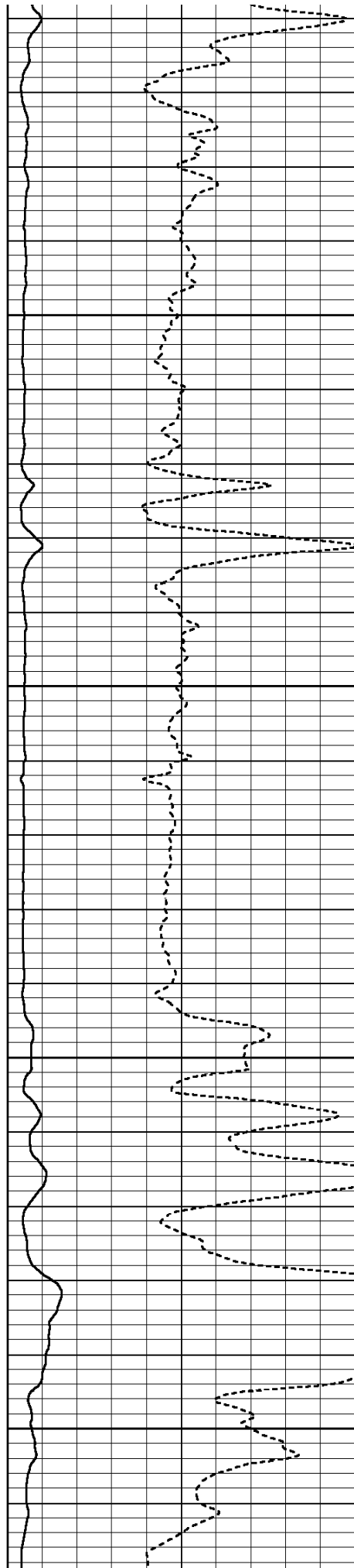
4100

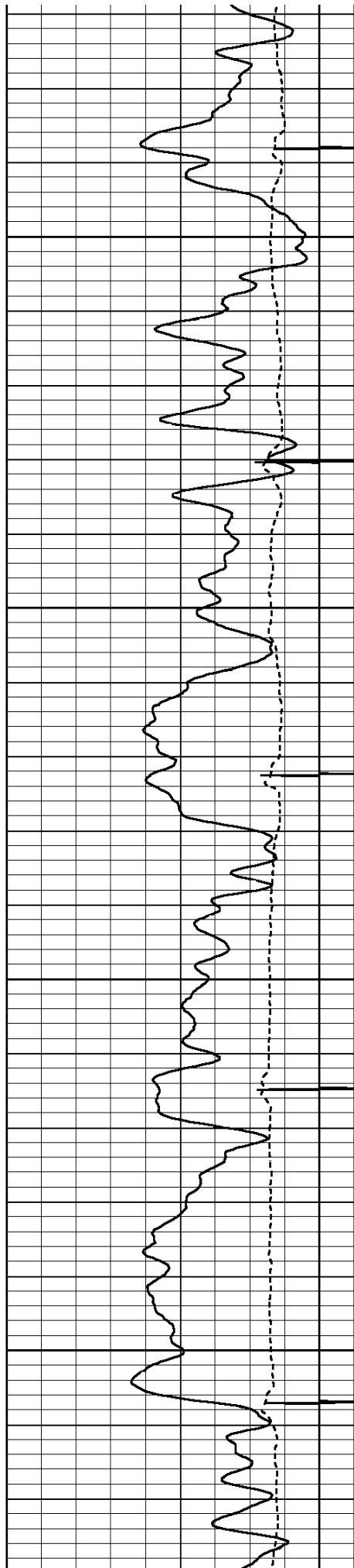




4200

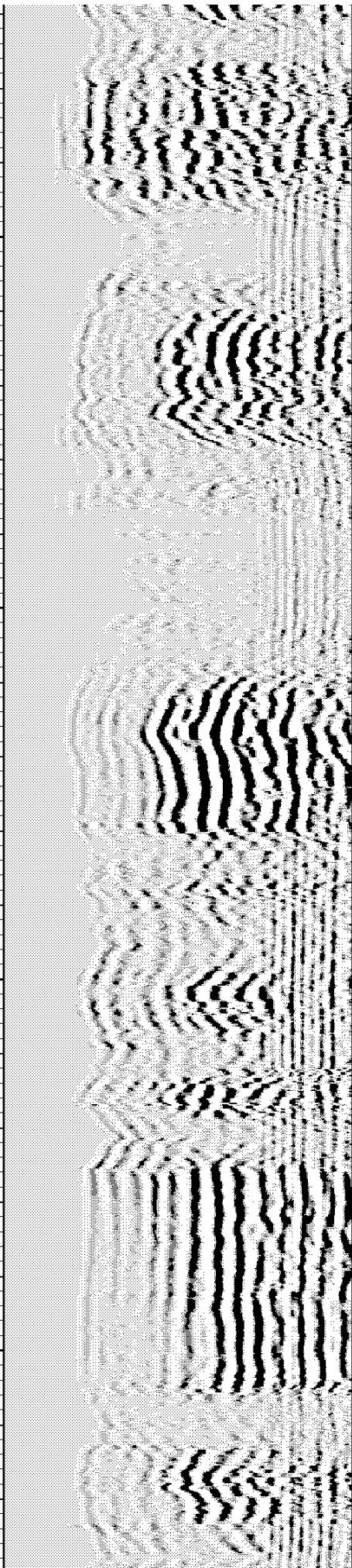
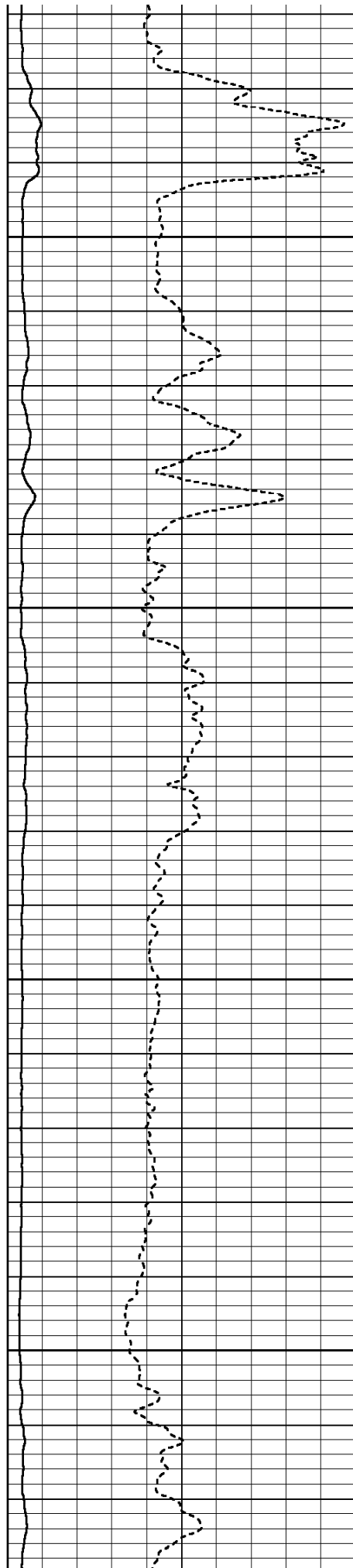
4300

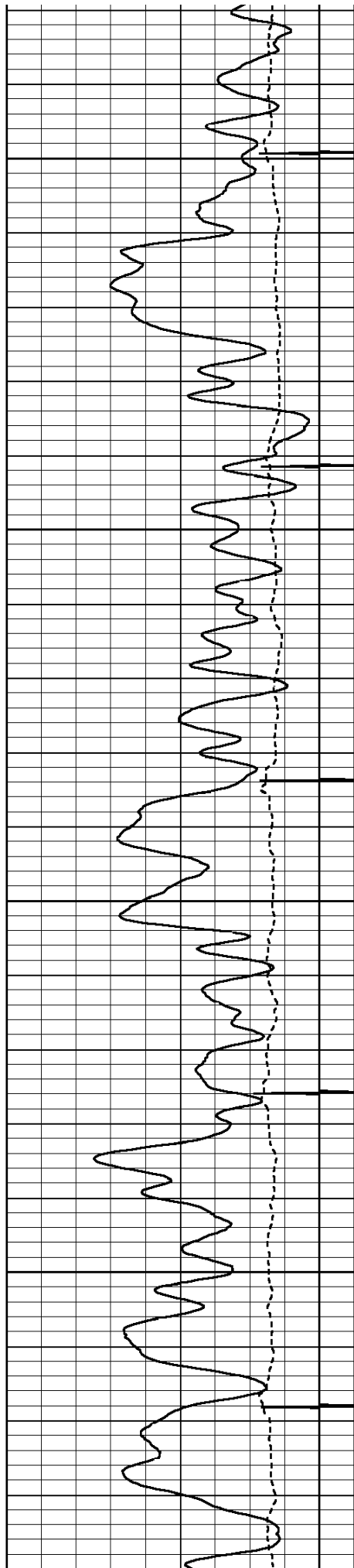




4400

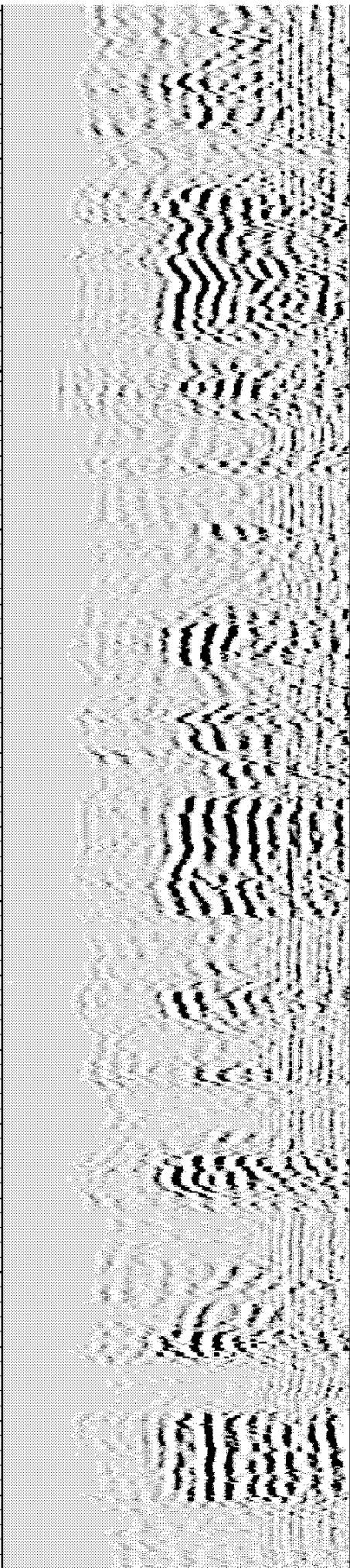
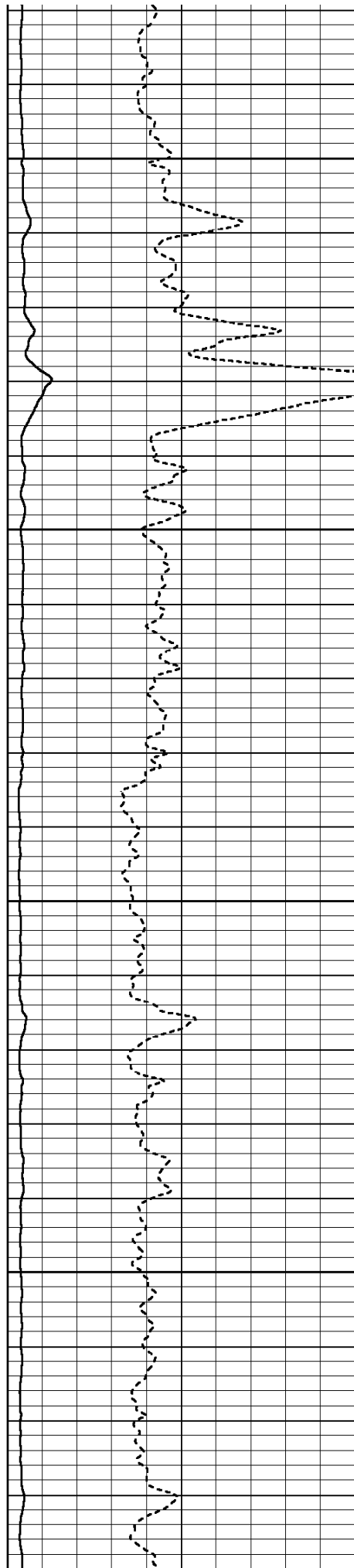
4500

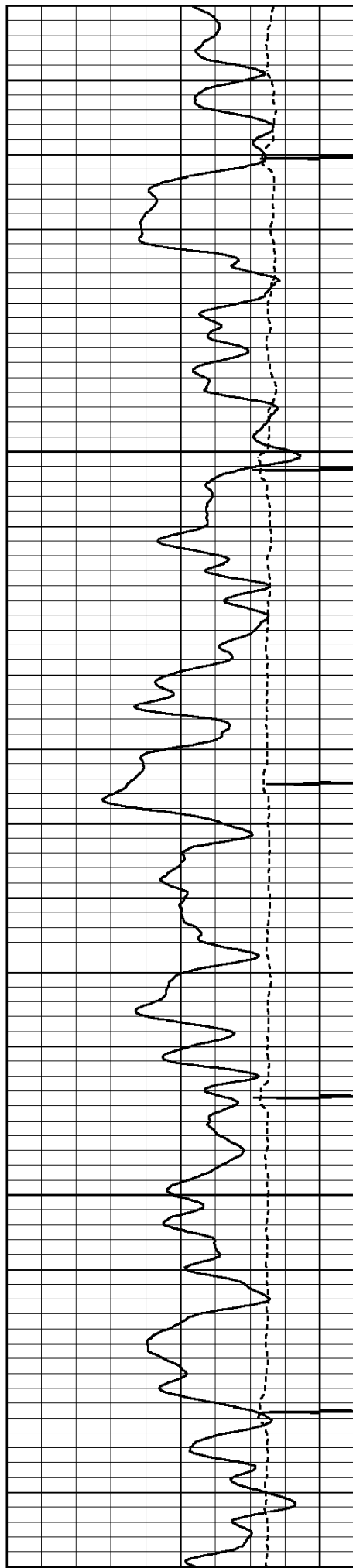




4600

4700

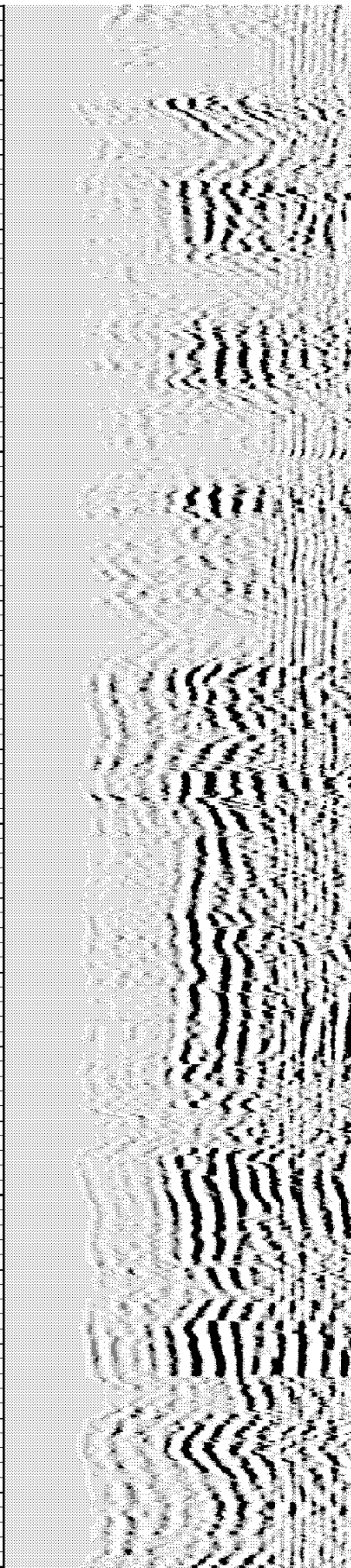
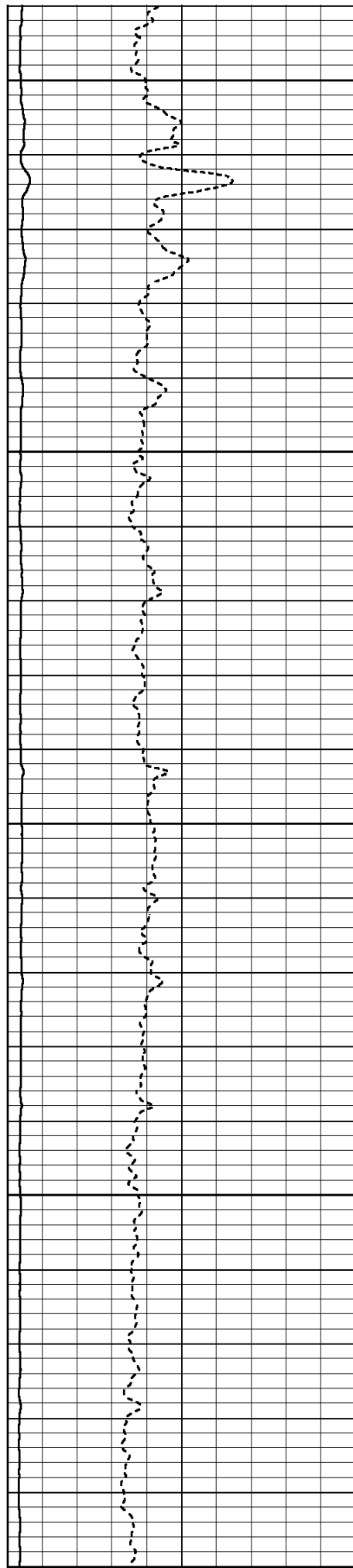


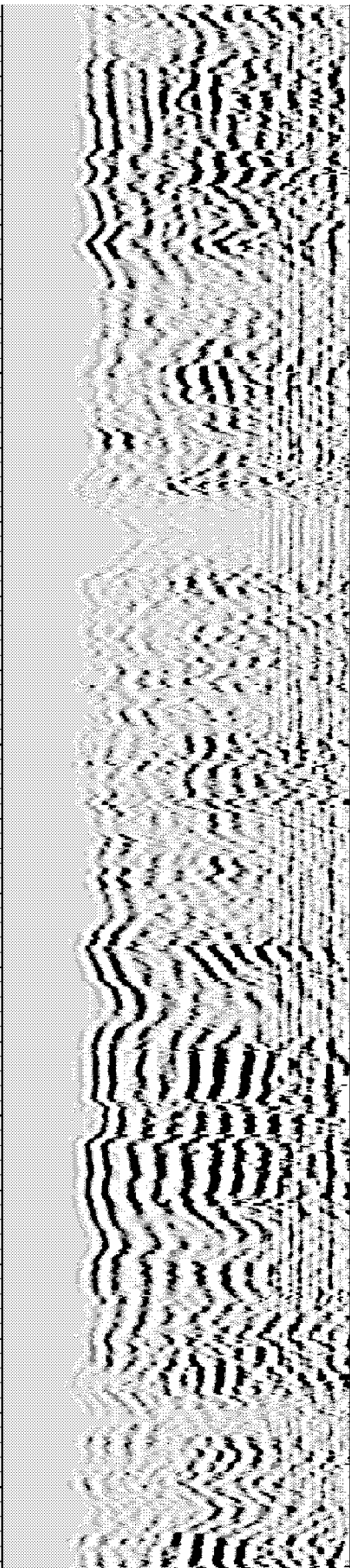
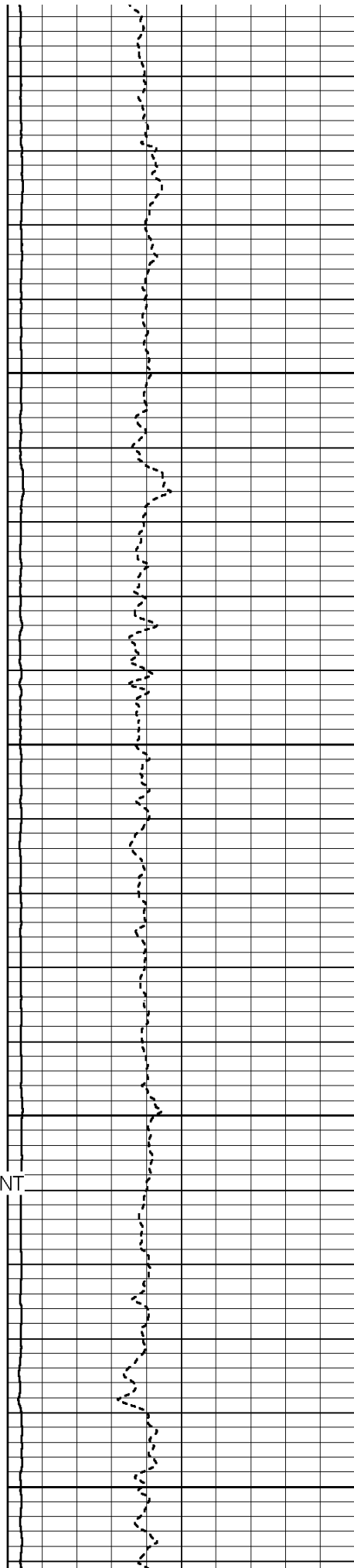
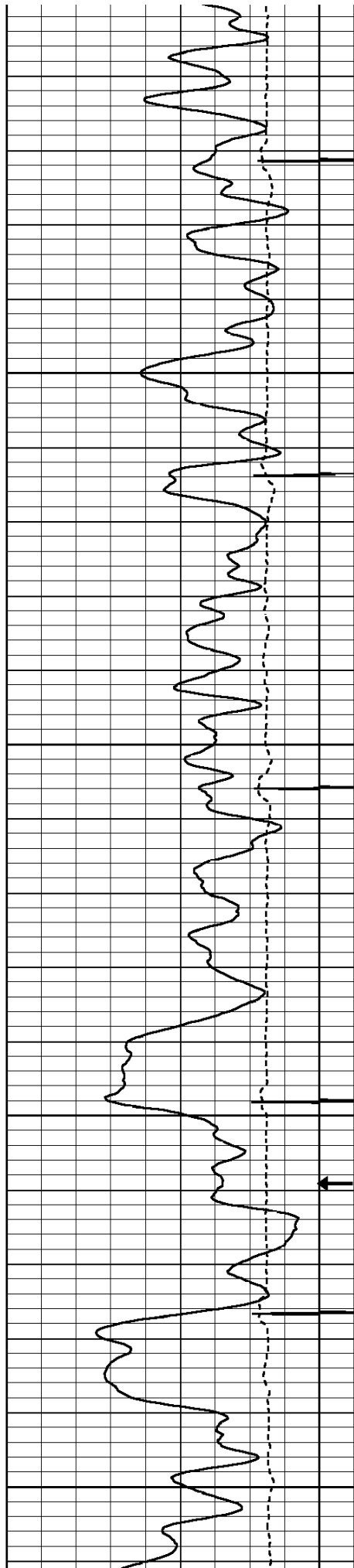


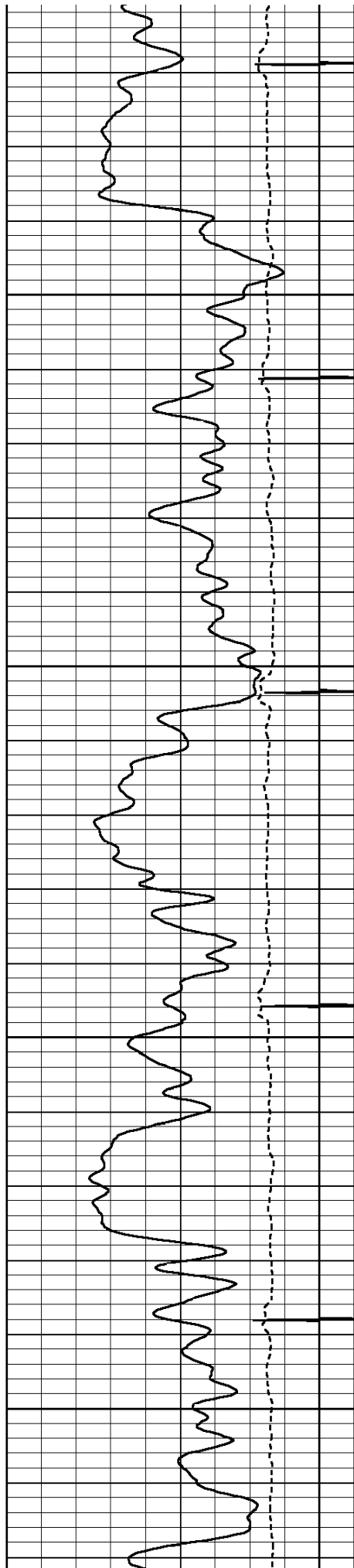
4800

4900

5000

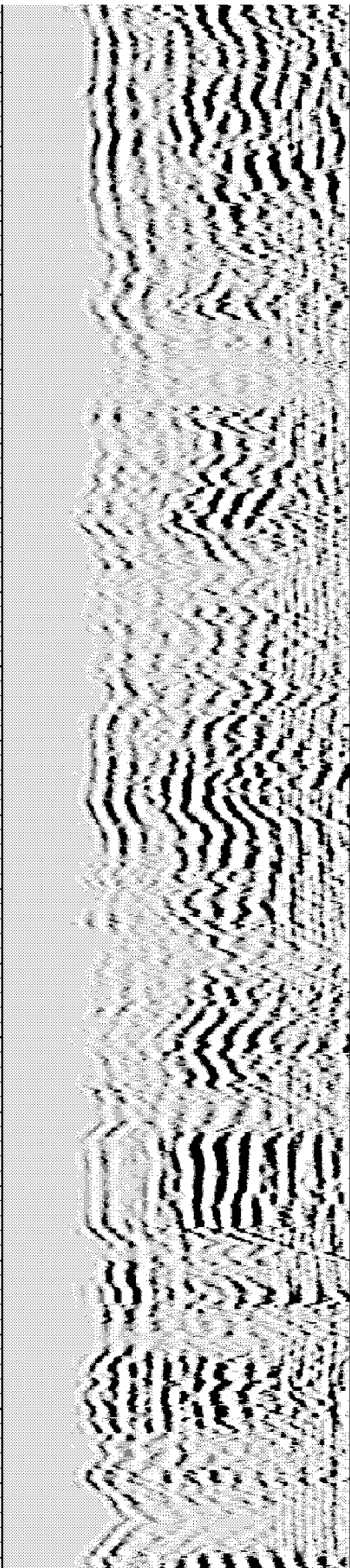
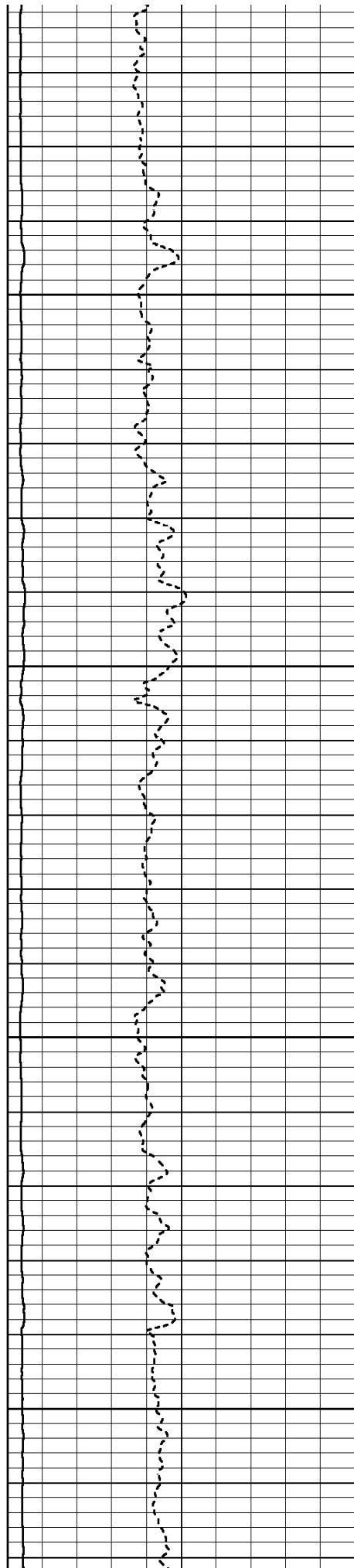


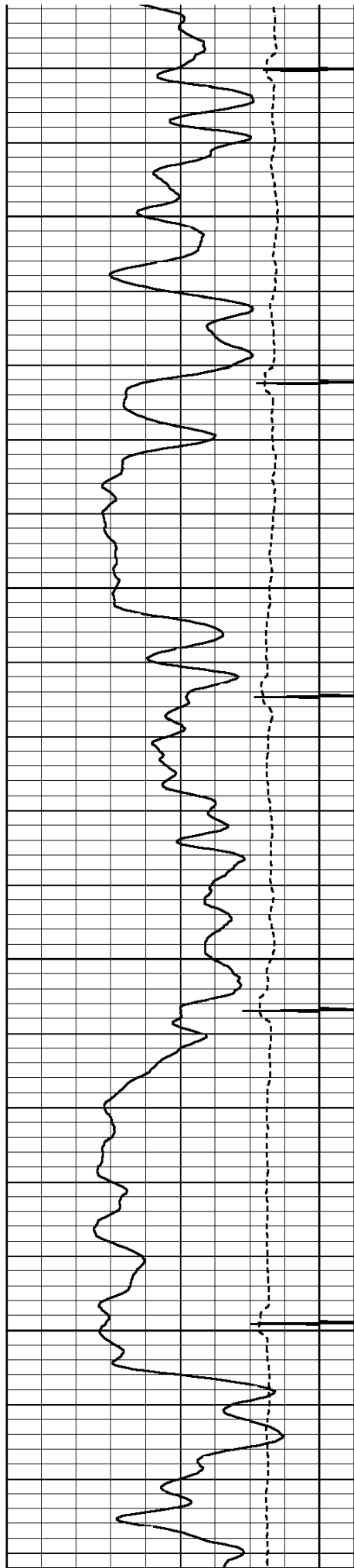




5300

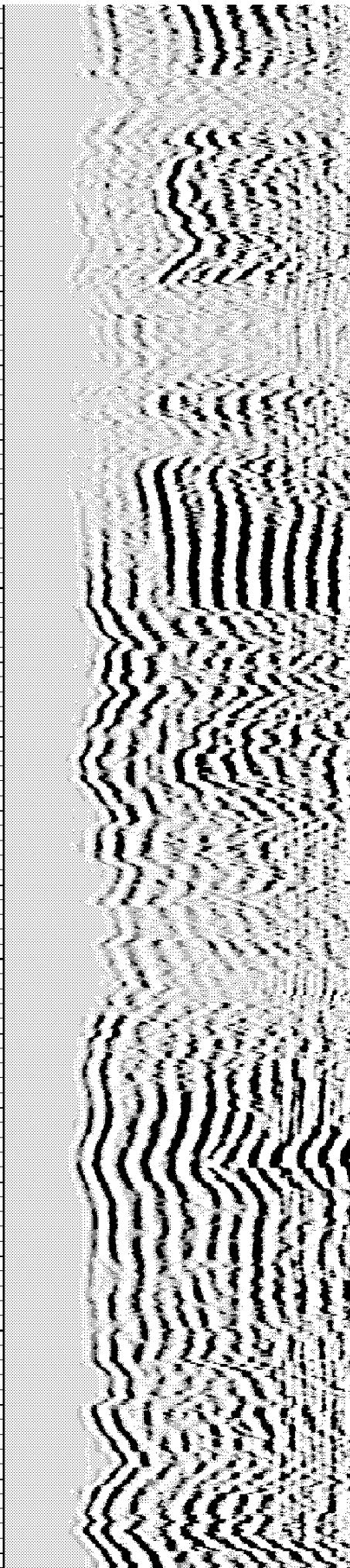
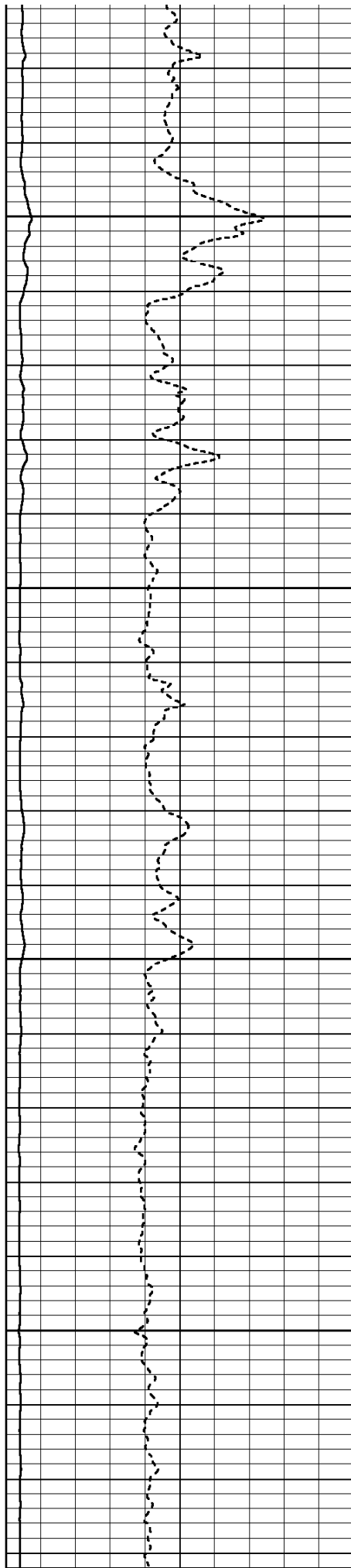
5400

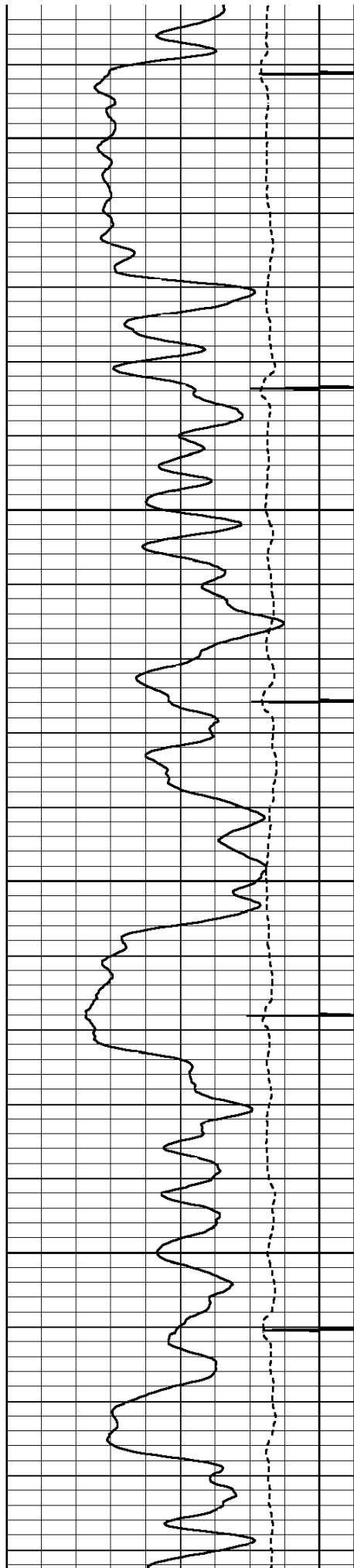




5500

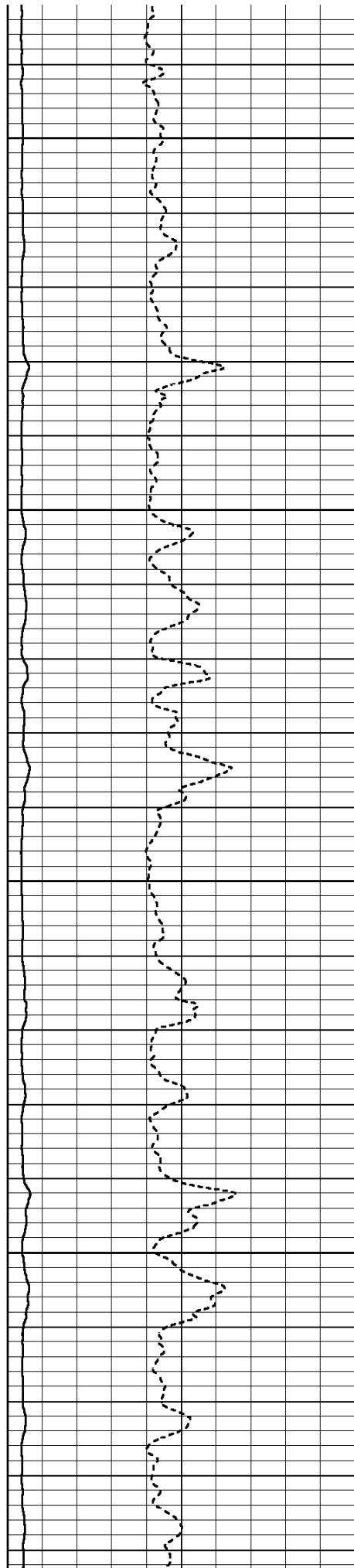
5600

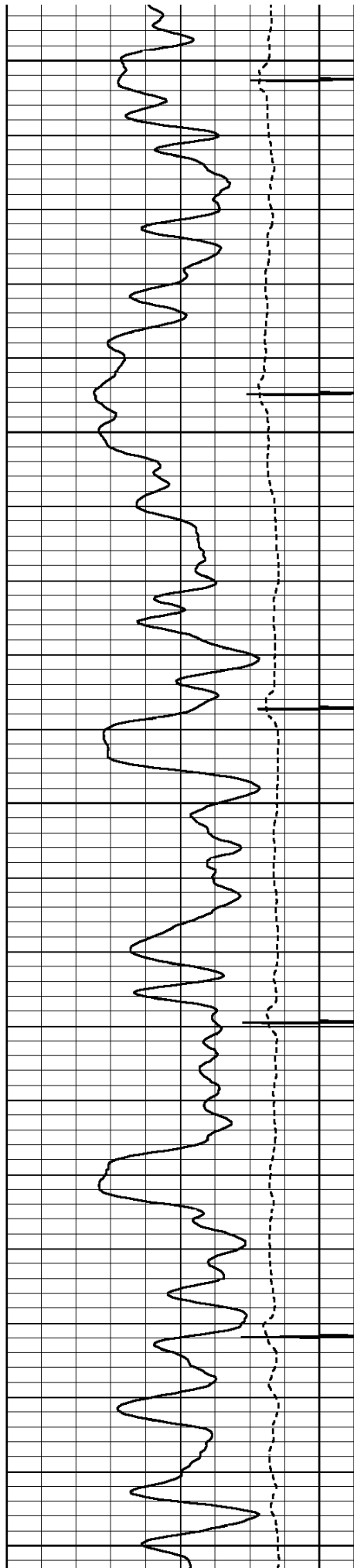




5700

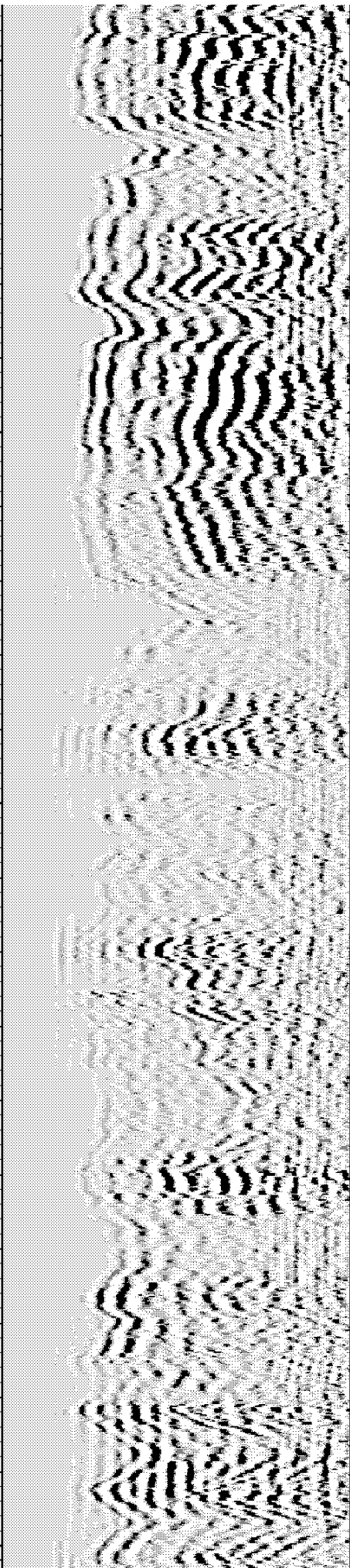
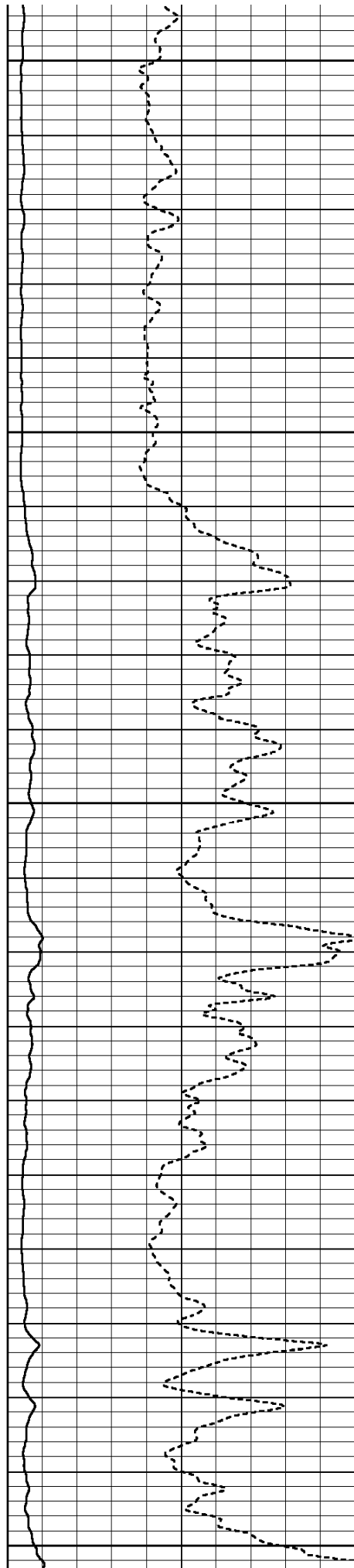
5800

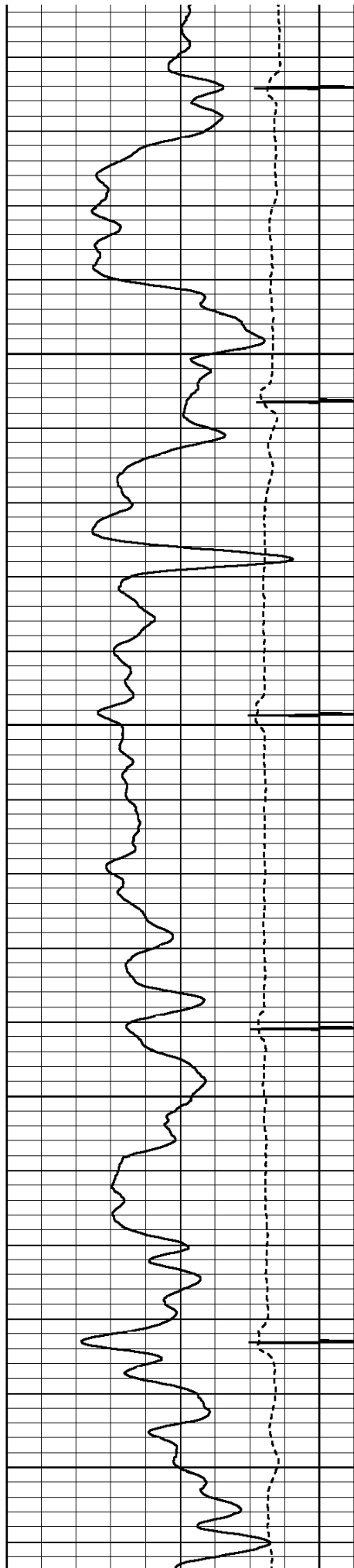




5900

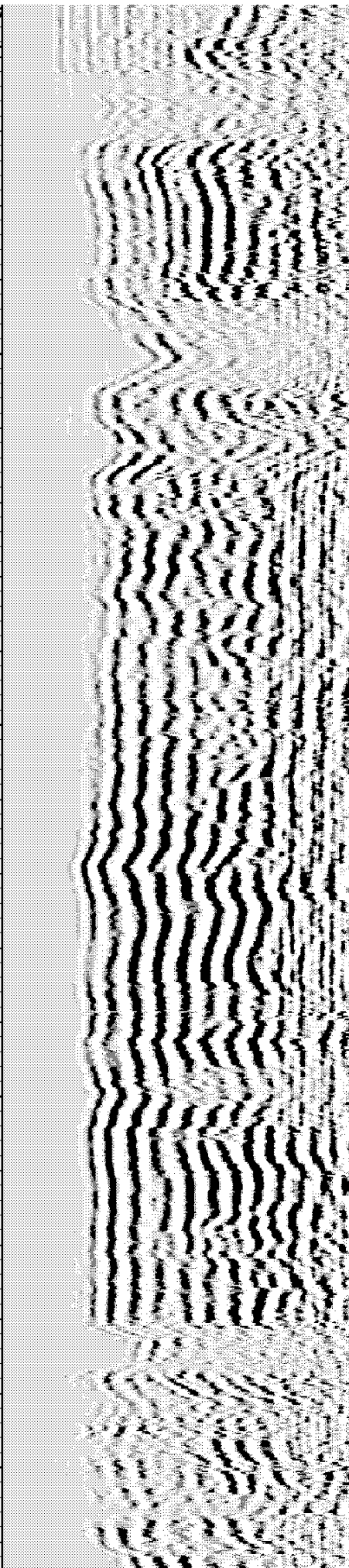
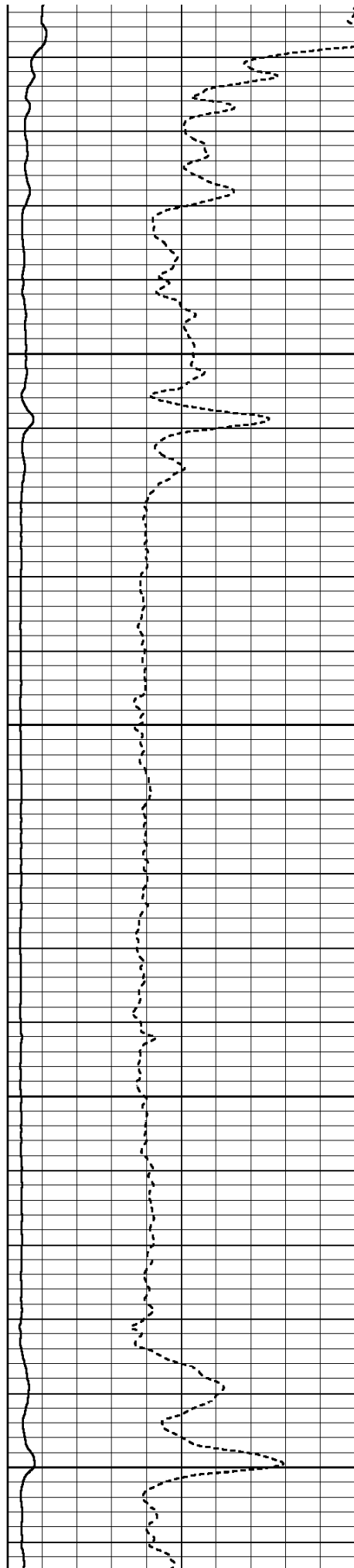
6000

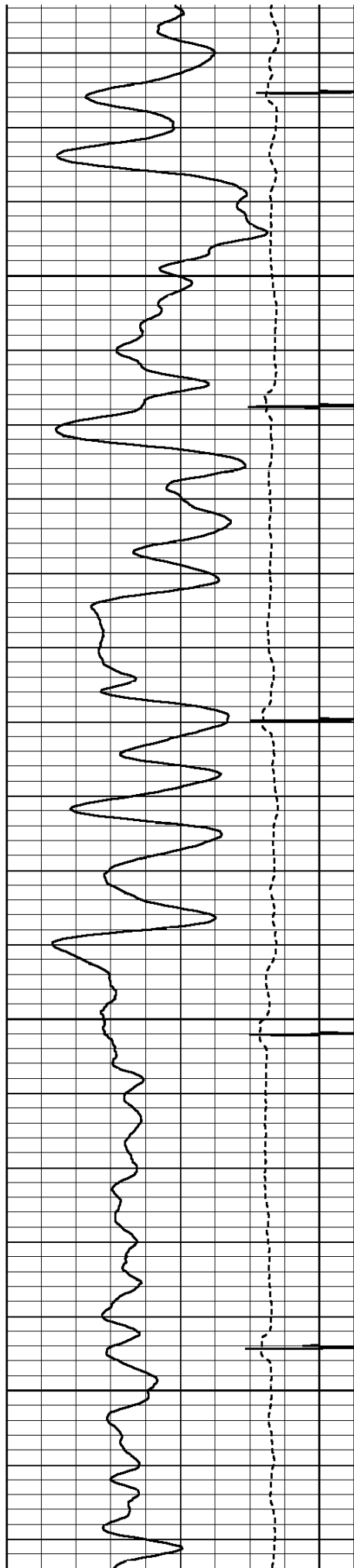




6100

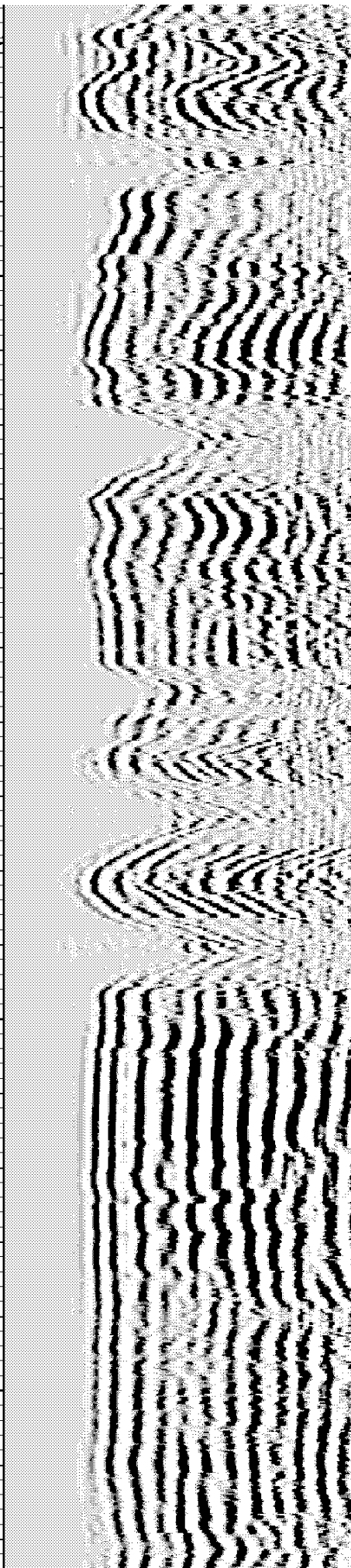
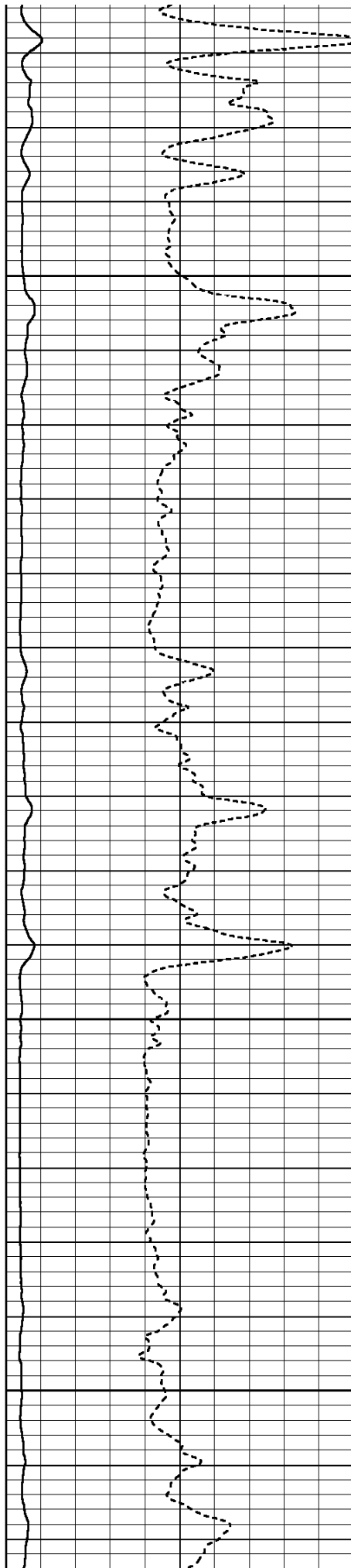
6200

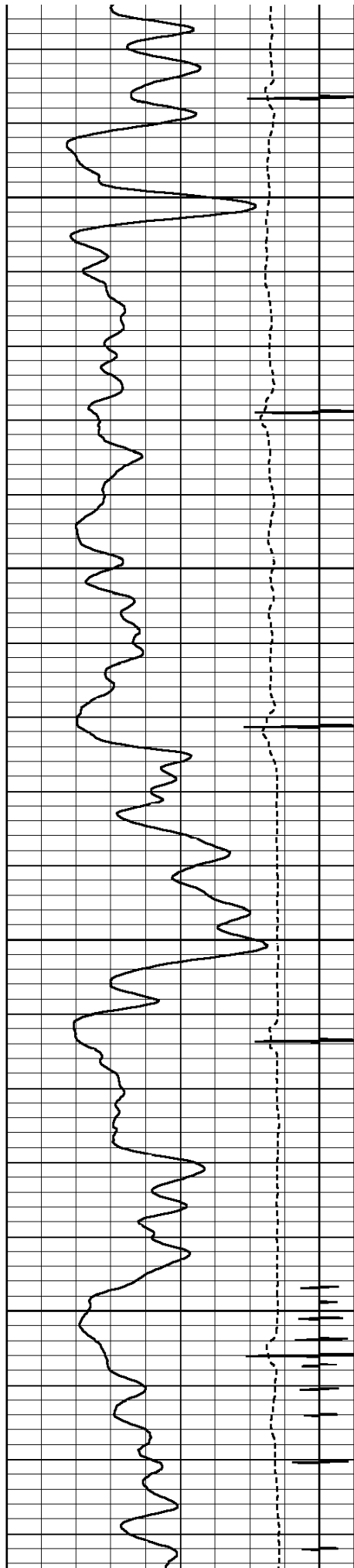




6300

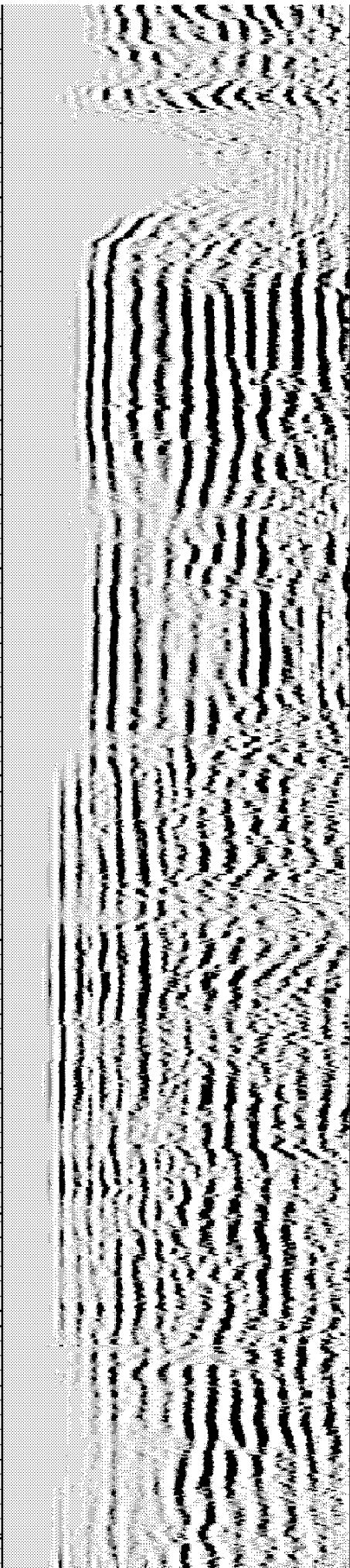
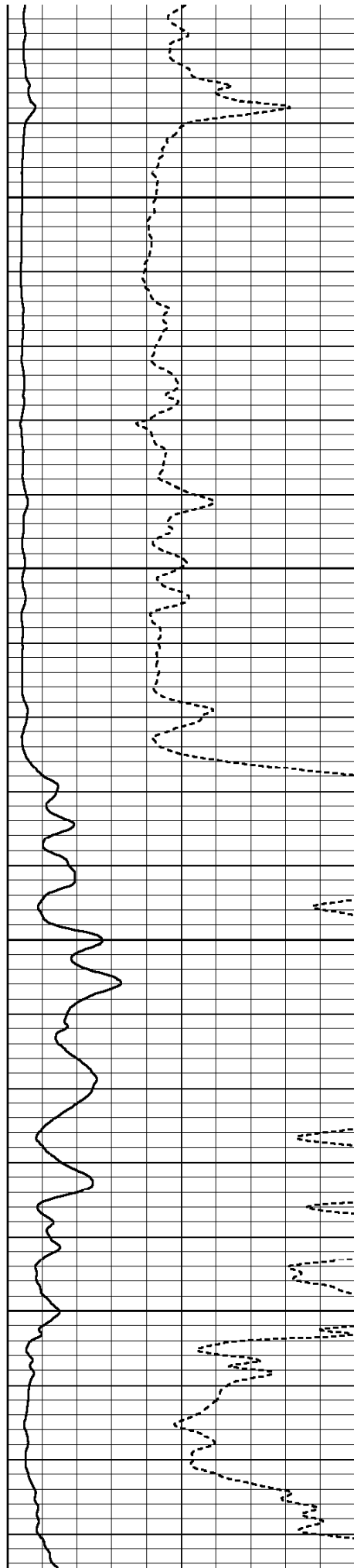
6400

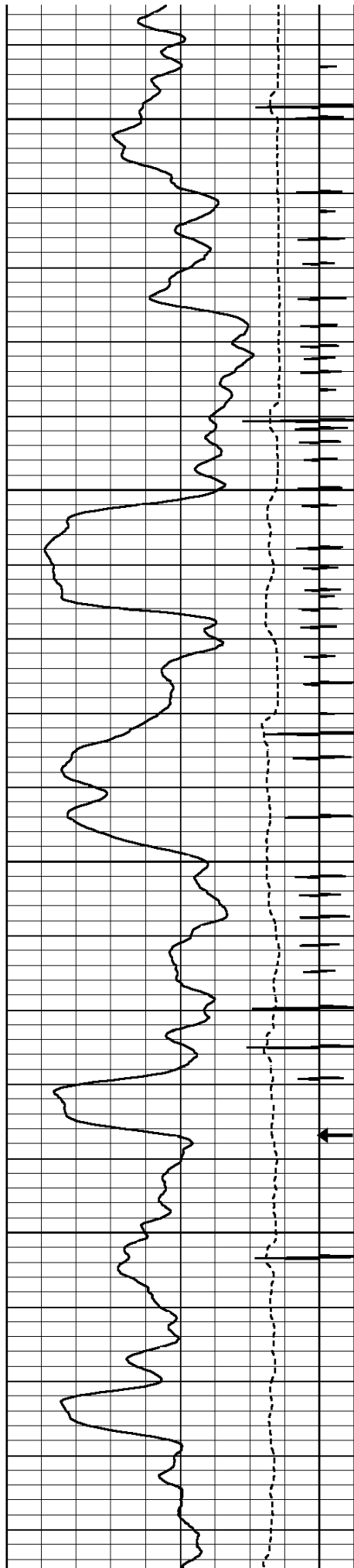




6500

6600

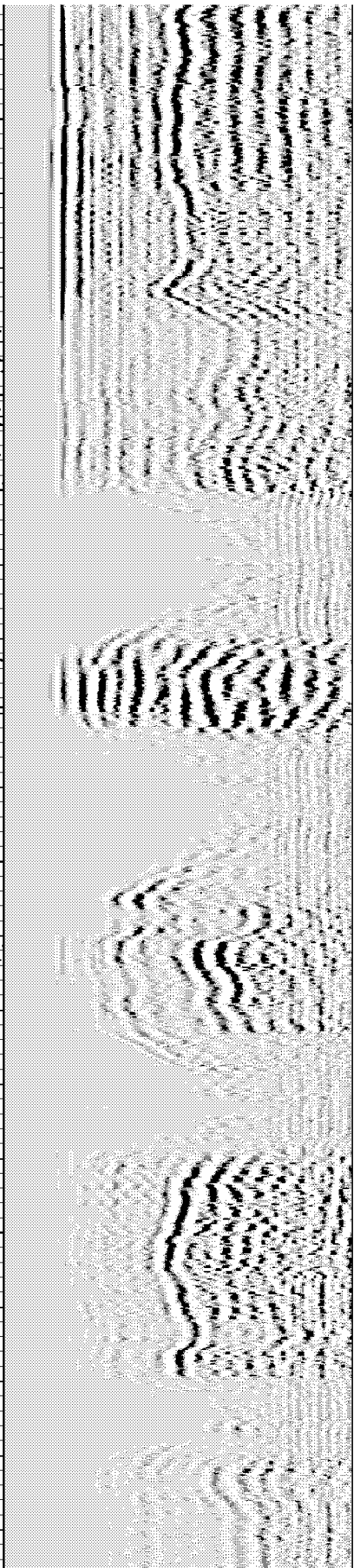
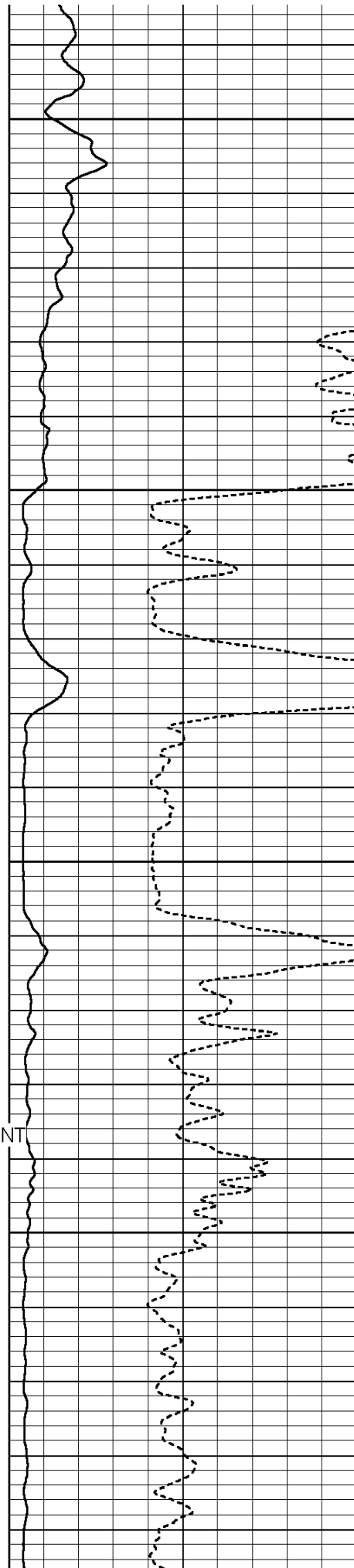


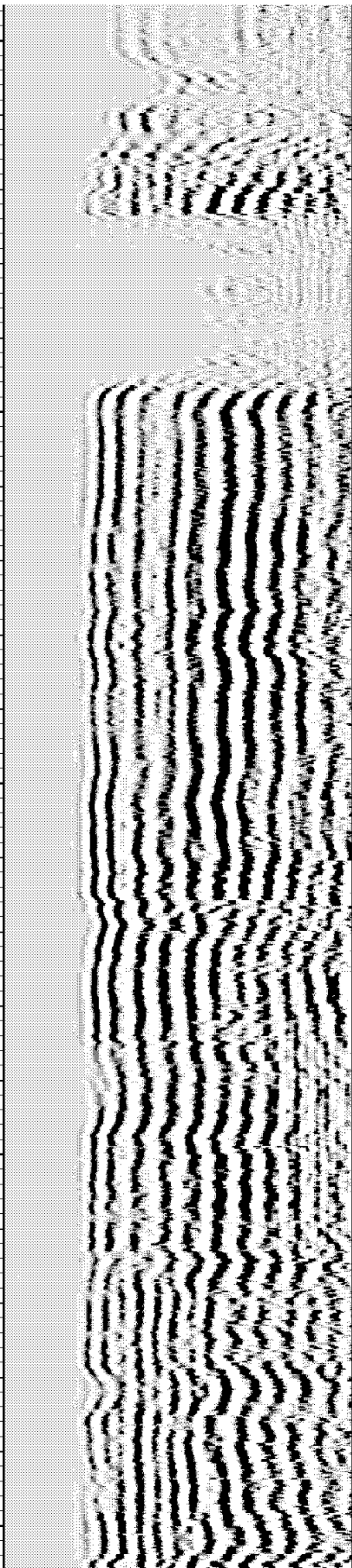
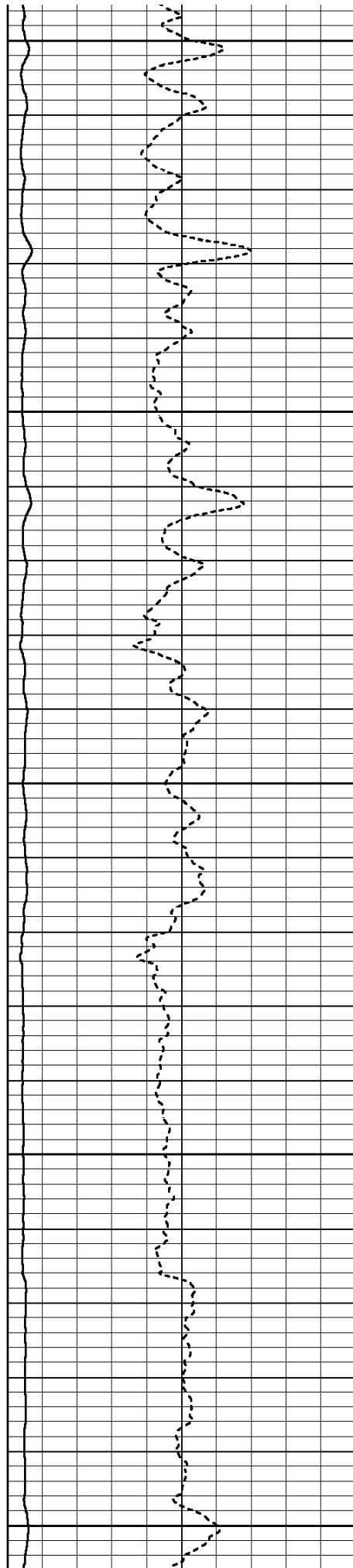
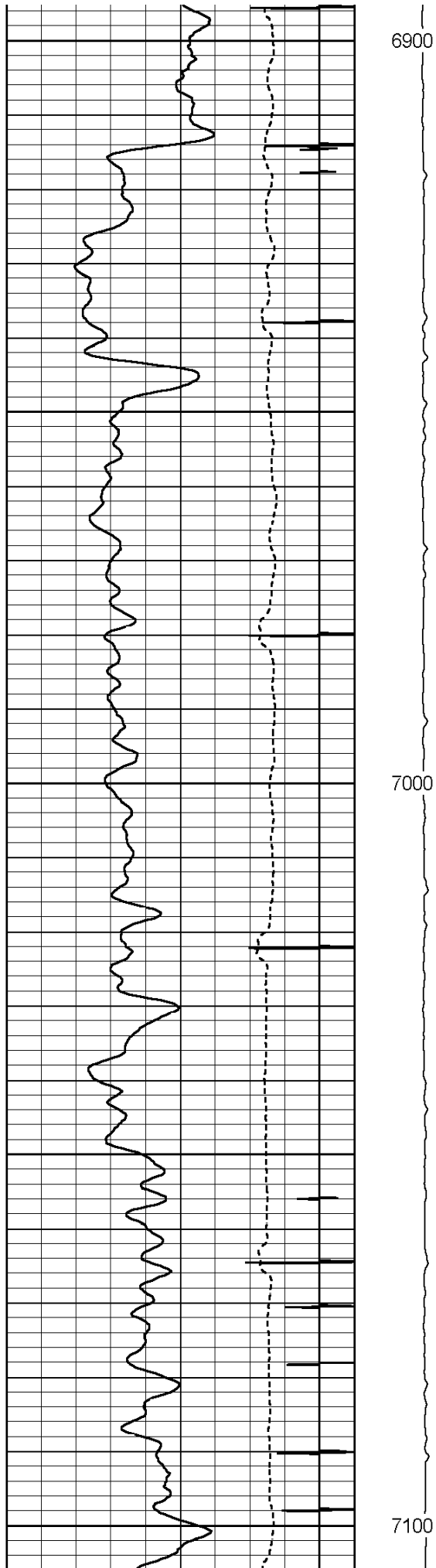


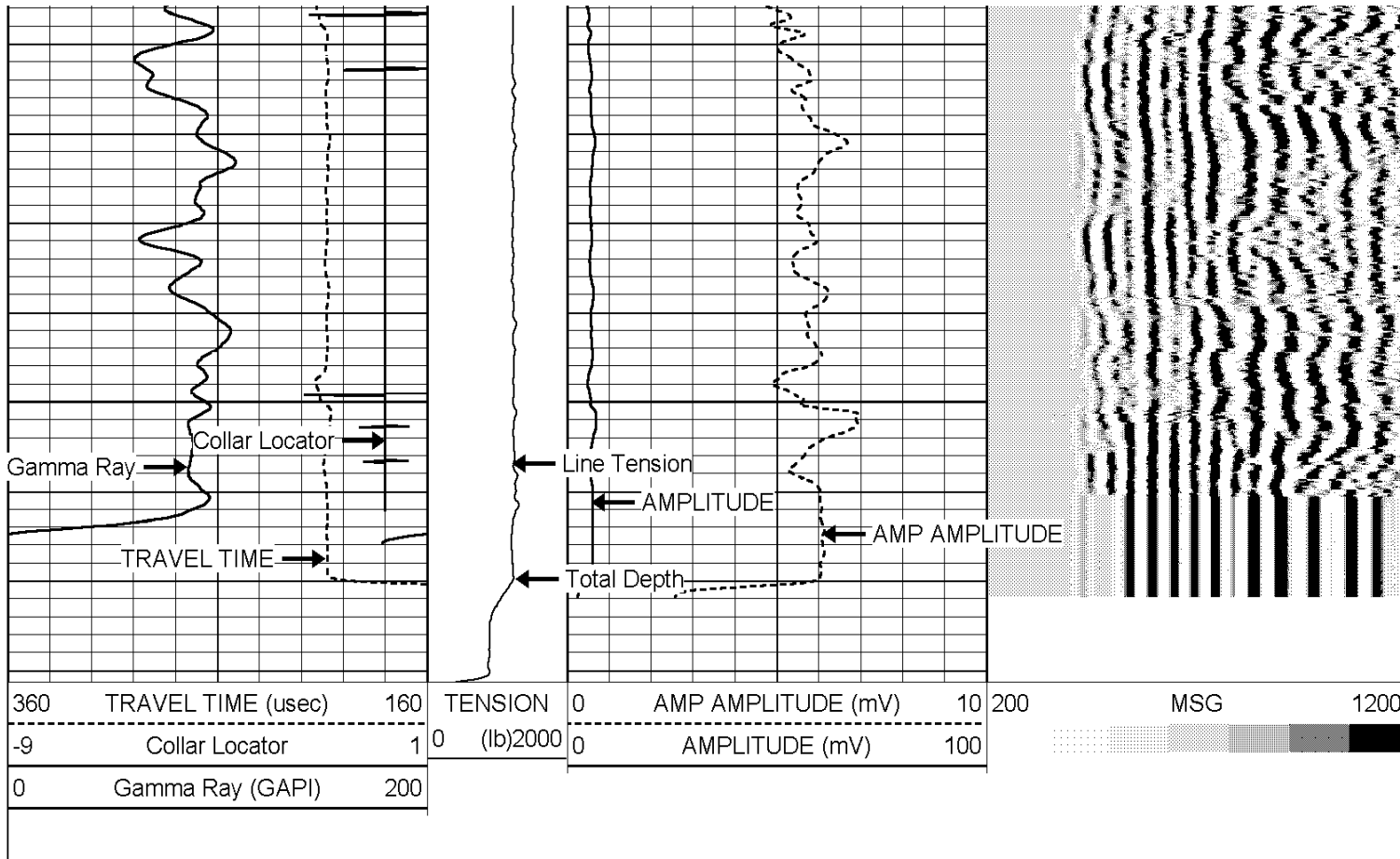
6700

6800

SHORT JOINT







HALLIBURTON

ACOUSTIC CEMENT BOND LOG

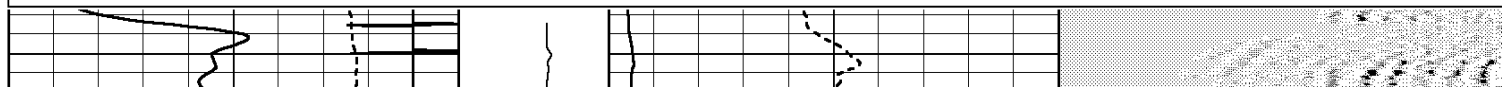
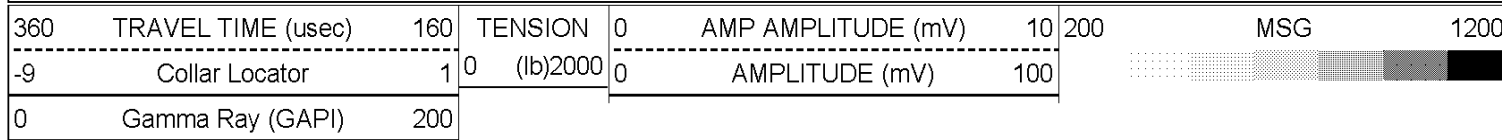
MAIN LOG SECTION
5"=100'

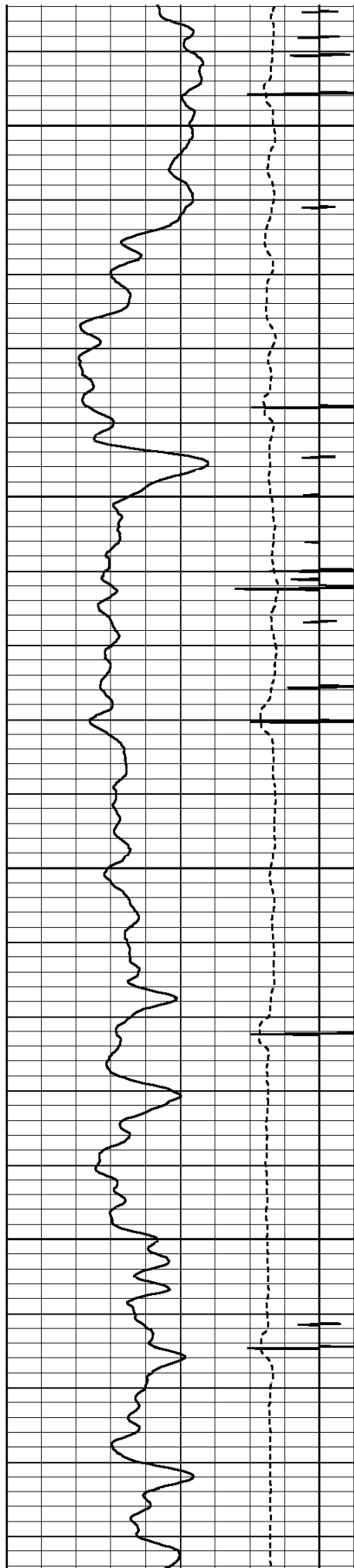
HALLIBURTON

ACOUSTIC CEMENT BOND LOG

REPEAT LOG SECTION
5"=100'

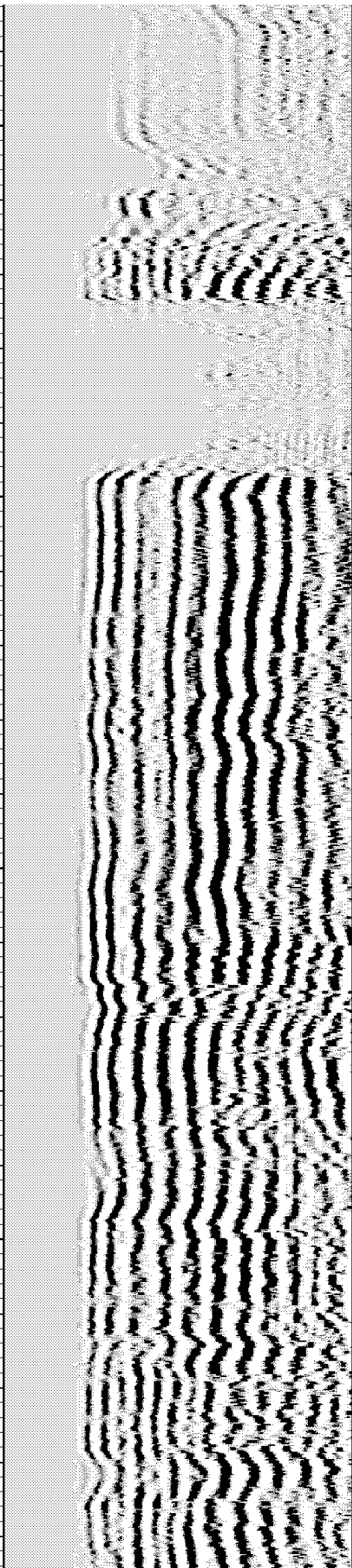
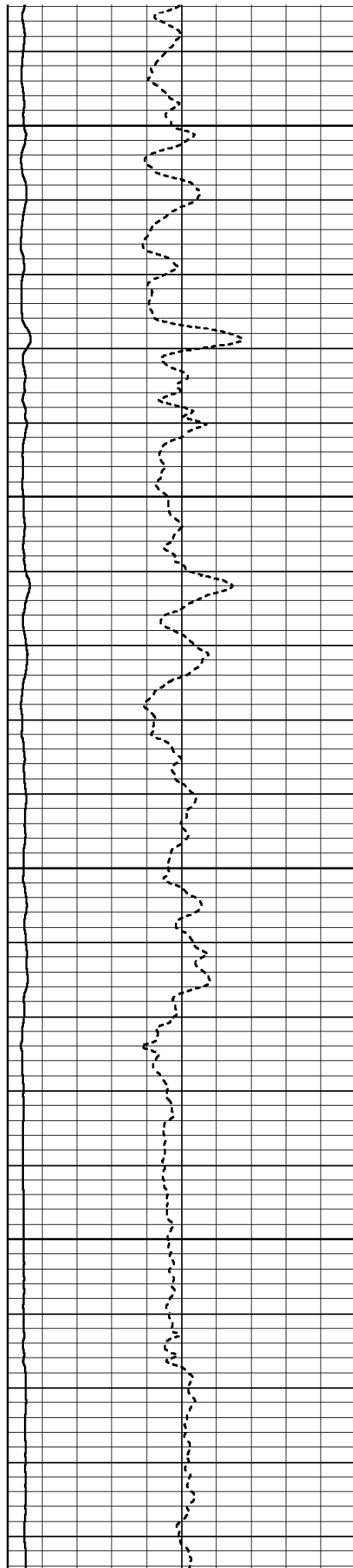
Database File: scott_24a_25_692_cbl.db
 Dataset Pathname: CBL/REPEAT1
 Presentation Format: cbl_main
 Dataset Creation: Sun Feb 24 09:48:45 2008 by Calc Halliburton Casedho
 Charted by: Depth in Feet scaled 1:240

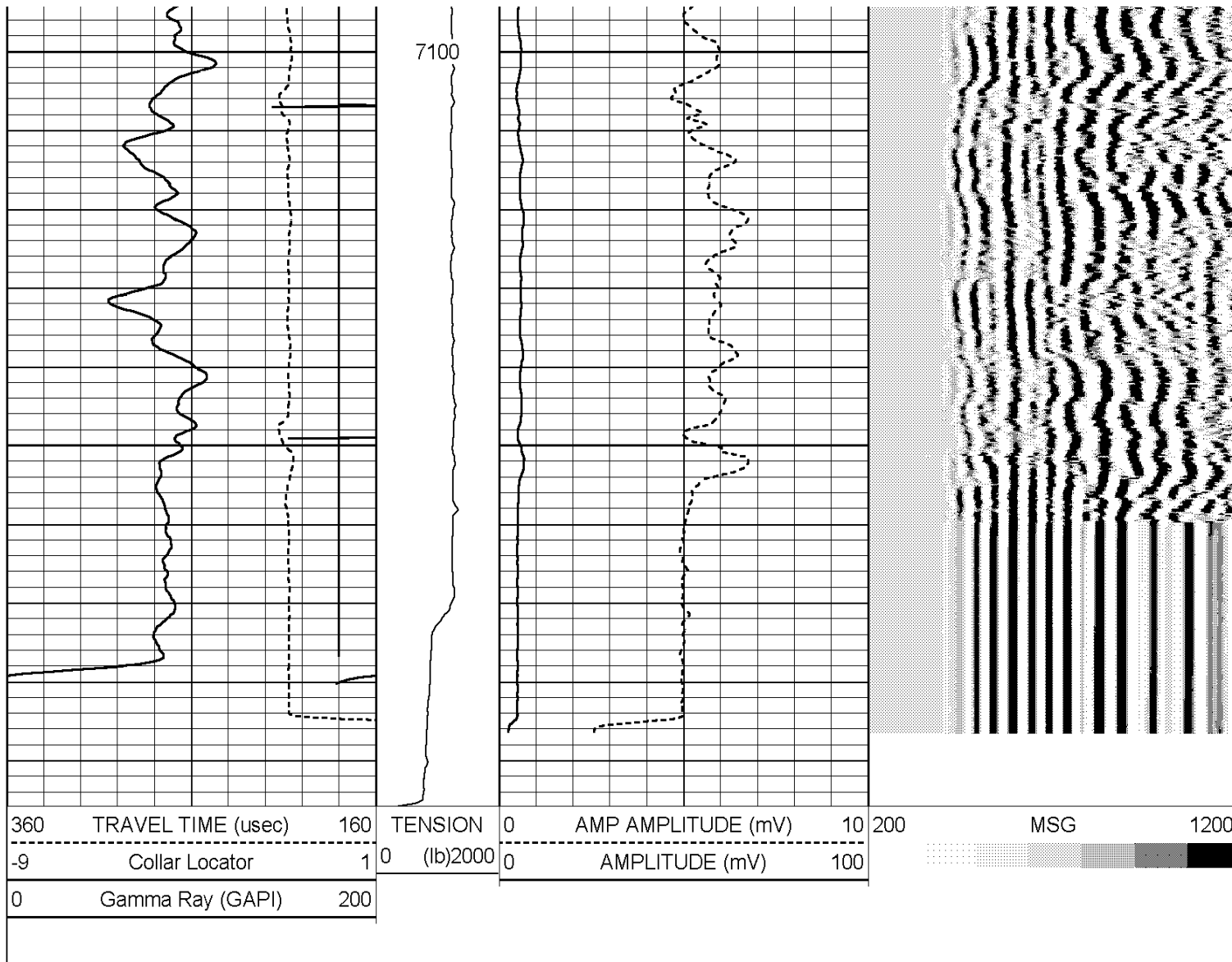




6900

7000





ACOUSTIC CEMENT BOND LOG

HALLIBURTON

REPEAT LOG SECTION
5"=100'

ACOUSTIC CEMENT BOND LOG

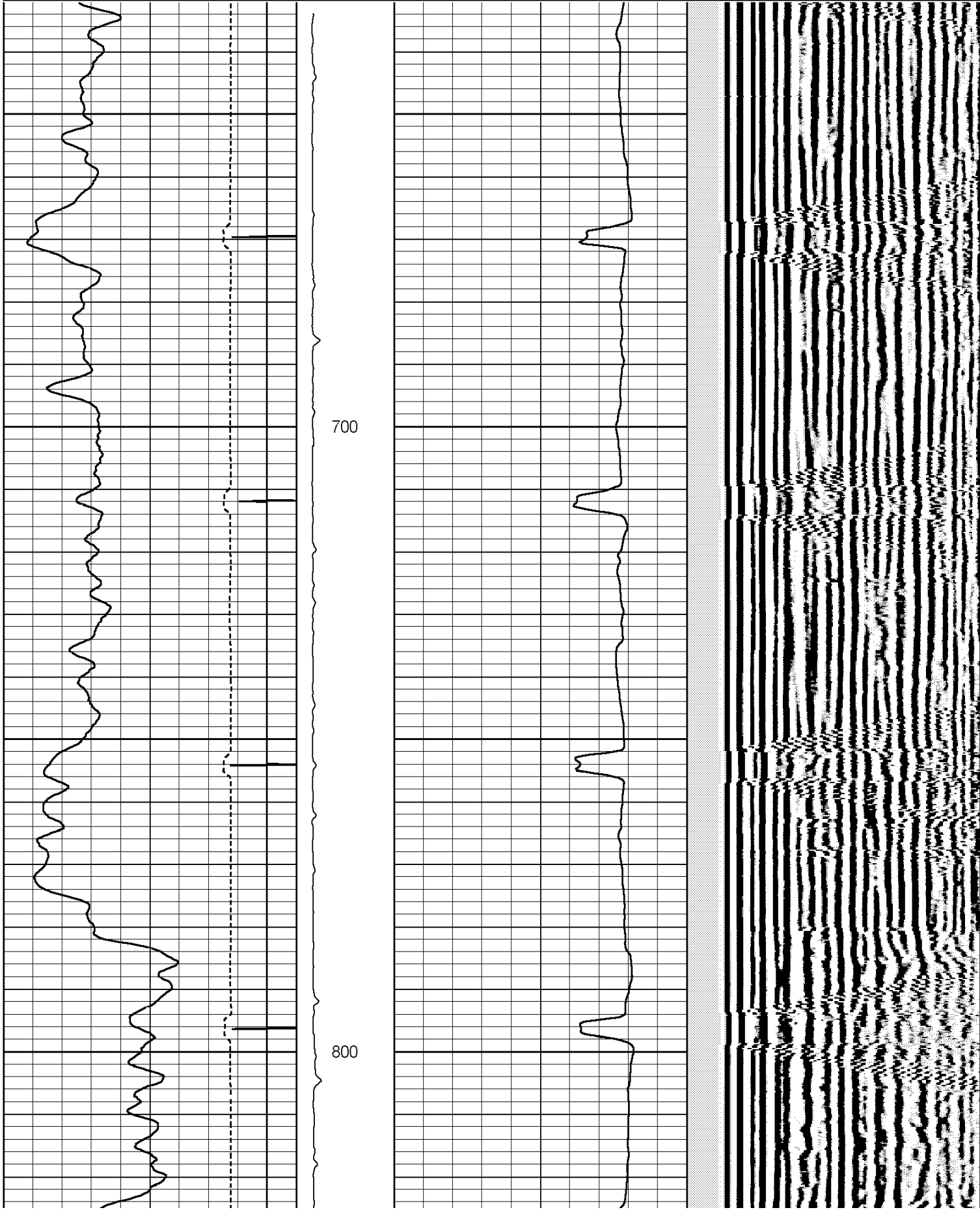
HALLIBURTON

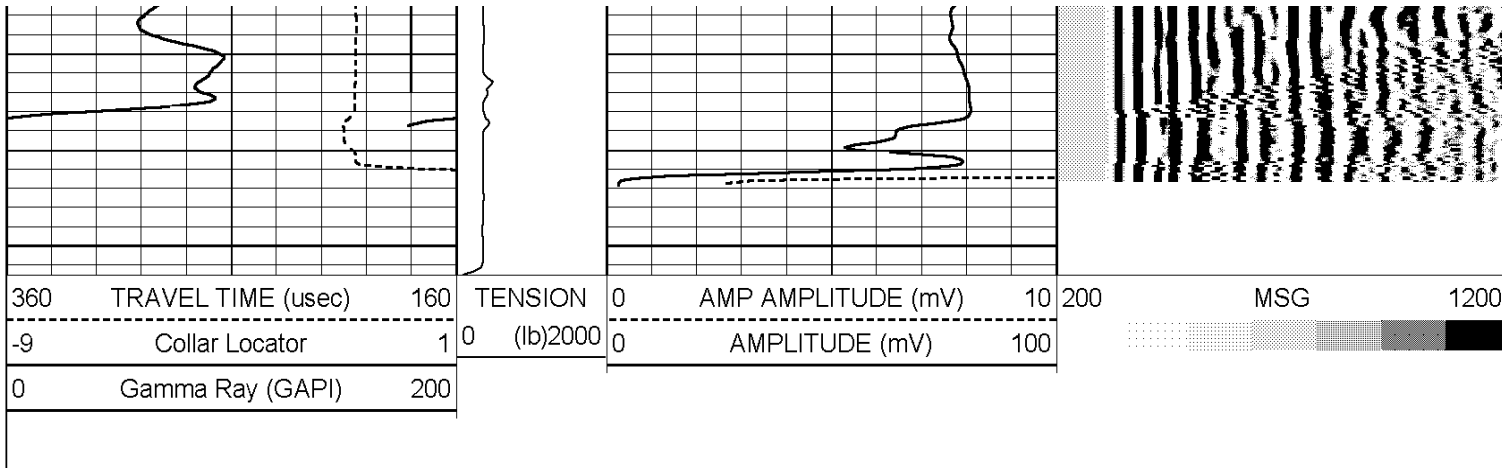
SURFACE CASING SHOE AREA
5"=100'

Database File: scott_24a_25_692_cbl.db
Dataset Pathname: CBL/S_CASE
Presentation Format: cbl_main
Dataset Creation: Sun Feb 24 10:06:51 2008 by Log Halliburton Casedho
Charted by: Depth in Feet scaled 1:240

360	TRAVEL TIME (uSec)	160	TENSION	0	AMP AMPLITUDE (mV)	10	200	MSG	1200
-----	--------------------	-----	---------	---	--------------------	----	-----	-----	------

700	TIME (ms)	100	0	0	0	100	
-9	Collar Locator	1	0	(lb)2000	0	AMPLITUDE (mV)	100
0	Gamma Ray (GAPI)	200					





ACOUSTIC CEMENT BOND LOG

HALLIBURTON

SURFACE CASING SHOE AREA
5"=100'

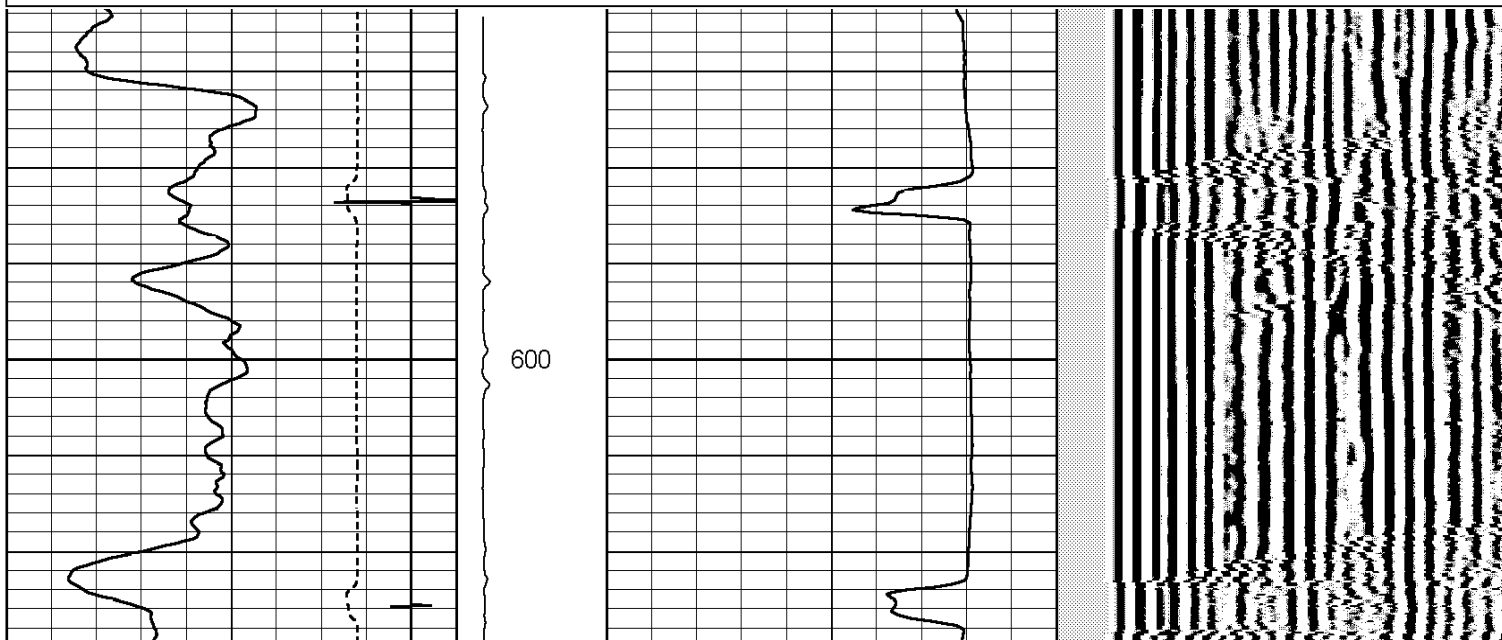
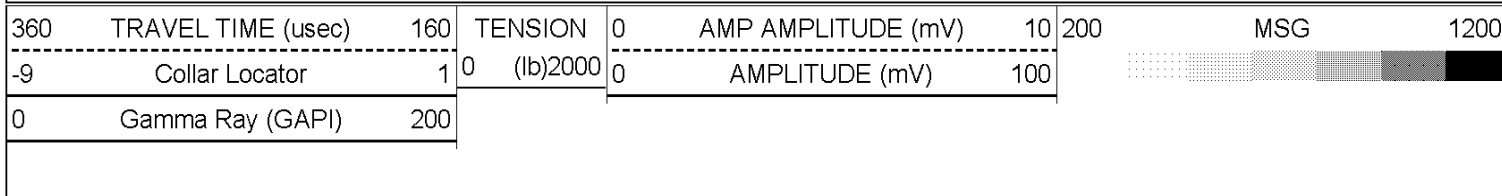


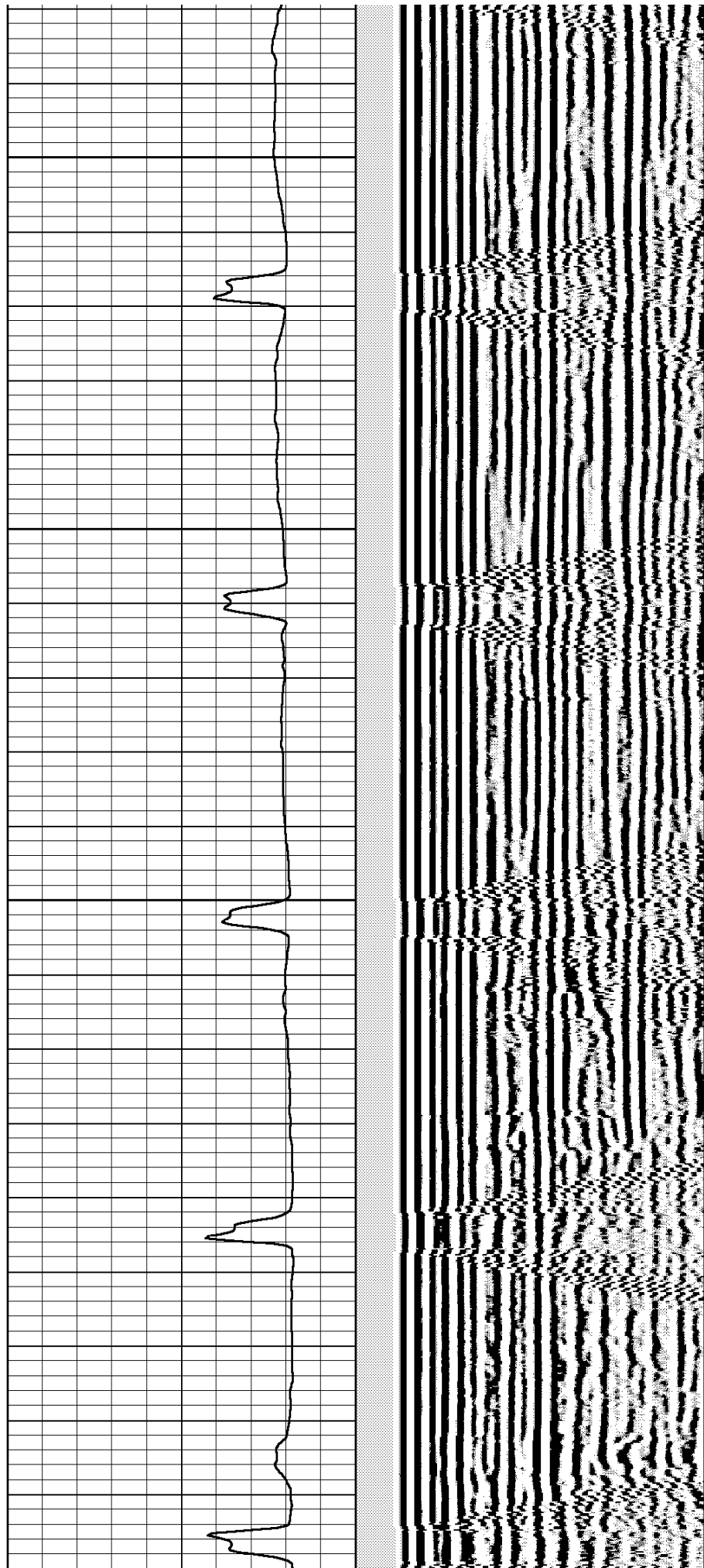
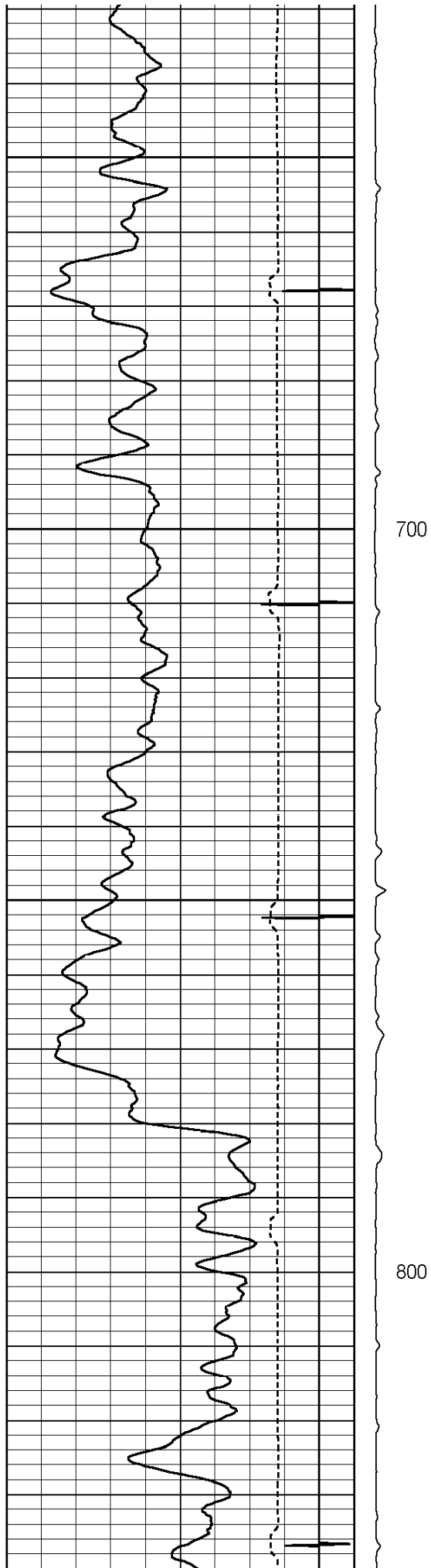
ACOUSTIC CEMENT BOND LOG

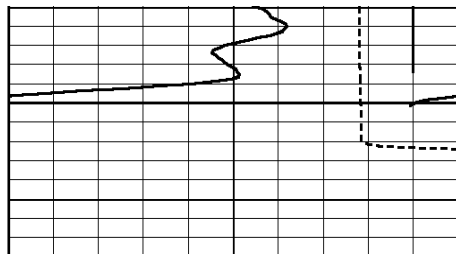
HALLIBURTON

FREE PIPE LOG SECTION
5"=100'

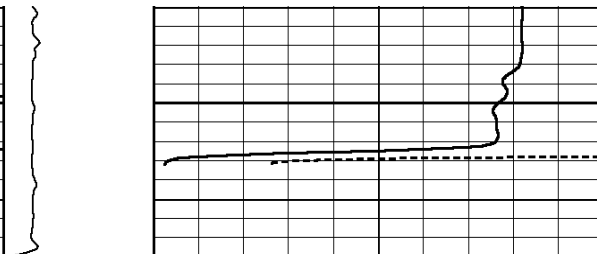
Database File: scott_24a_25_692_cbl.db
Dataset Pathname: CBL/FREE1
Presentation Format: cbl_main
Dataset Creation: Sun Feb 24 07:53:31 2008 by Log Halliburton Casedho
Charted by: Depth in Feet scaled 1:240







360	TRAVEL TIME (uSec)	160
-9	Collar Locator	1
0	Gamma Ray (GAPI)	200



TENSION	0	AMP AMPLITUDE (mV)	10
0	(lb)2000	0	AMPLITUDE (mV)
			100



200	MSG	1200
-----	-----	------

HALLIBURTON

ACOUSTIC CEMENT BOND LOG

FREE PIPE LOG SECTION

5"=100'

Calibration Report

Database File: scott_24a_25_692_cbl.db
 Dataset Pathname: CBL/S_CASE
 Dataset Creation: Sun Feb 24 10:06:51 2008 by Log Halliburton Casedho

Gamma Ray Calibration Report

Type / Serial: CBL_DC / 400

SHOP CALIBRATION

Sun Feb 24 09:50:12 2008

	Counts/Sec.	Gain	Offset	Jig	Units
Background	136.1				cps
Calibrator	496.5				cps
		0.4893			GAPI/cps

PRIMARY VERIFICATION

Sun Feb 24 07:34:55 2008

Background	64.7				cps
Calibrator	319.1				cps
Difference				254.4	GAPI

BEFORE SURVEY VERIFICATION

Background	0.0				cps
Calibrator	0.0				cps
Difference				0.0	GAPI

AFTER SURVEY VERIFICATION

Background	0.0				cps
Calibrator	0.0				cps
Difference				0.0	GAPI

Segmented Cement Bond Log Calibration Report

Serial Number:	400
Tool Model:	CBL_DC
Calibration Casing Diameter:	4.500 in
Calibration Depth:	731.280 ft

Master Calibration, performed Sun Feb 24 07:51:27 2008:

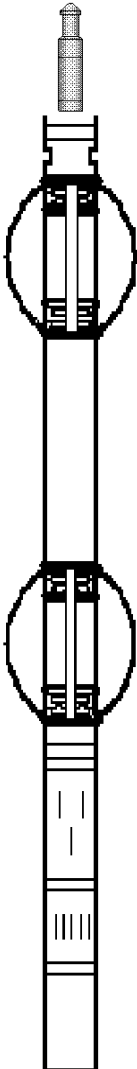
	Raw (v)		Calibrated (mv)		Results	
	Zero	Cal	Zero	Cal	Gain	Offset
3'	-0.011	1.462	2.000	81.196	53.789	2.578
CAL						
5'	-0.011	1.299	2.000	81.196	60.459	2.657

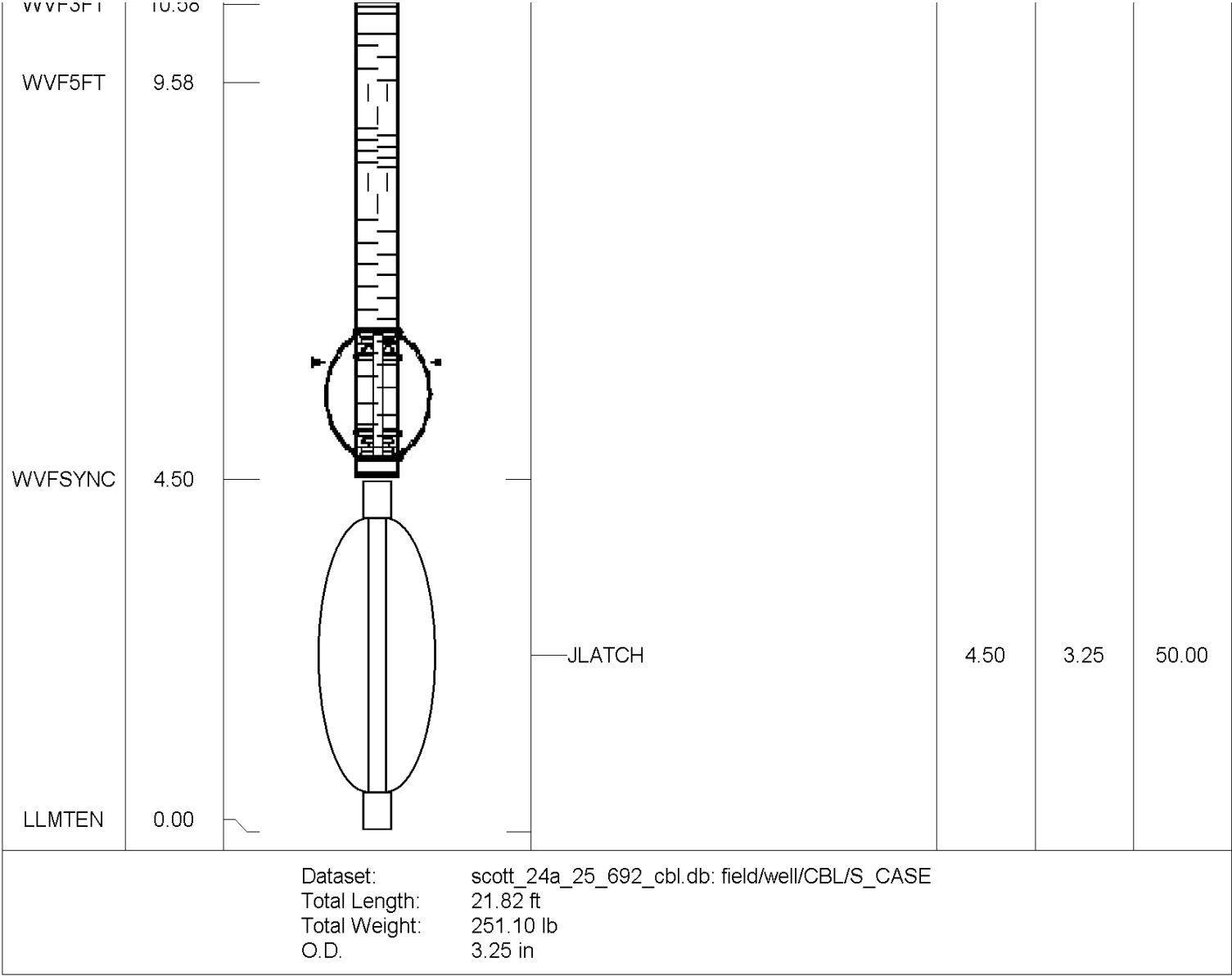
Internal Reference Calibration, performed Wed Dec 31 17:00:00 1969:

	Raw (v)		Calibrated (v)		Results	
	Zero	Cal	Zero	Cal	Gain	Offset
CAL						

Air Zero Calibration, performed Sun Feb 24 07:37:40 2008:

	Raw (v)		Calibrated (v)		Results	
	Zero		Zero		Offset	
3'	0.000		0.000		0.000	
5'	0.000		0.000		0.000	

Sensor	Offset (ft)	Schematic	Description	Len (ft)	OD (in)	Wt (lb)
CCL	19.00		STNDRD Standard Cable Head - F.N. 1 3/8"	1.15	1.44	1.10
GR	16.83					
WV/52FT	10.50		CBT_CBL_DC-CBL_DC (400) G-Type 3 1/4" Standard CBL TOOL@@	16.17	3.25	200.00



Company	BILL BARRETT CORPORATION			
Well	SCOTT 24A-25-692			
Field	MAMM CREEK			
County	GARFIELD	State	CO	
HALLIBURTON		ACOUSTIC CEMENT BOND LOG		