



SUPERIOR
Black Lick, Pa.
Mercer, Pa.
Wooster, Oh.
Cleveland, Ok.
Trinidad, Co.

DUAL INDUCTION LOG

Company XTO Energy Inc.
Well Golden Eagle 31-06
Field Purgatoire River
County Las Animas State Colorado

Location: API # : 05 071 09279 00

2436' FNL & 2133' FWL

SEC 31 TWP 33S RGE 67W

Permanent Datum	Ground Level	Elevation	7885'
Log Measured From	Ground Level		
Drilling Measured From	Ground Level		

Other Services
CDL
NEUTRON
Elevation
K.B. -----
D.F. -----
G.L. 7885'

Date	6-20-07		
Run Number	One		
Depth Driller	2450'		
Depth Logger	2450'		
Bottom Logged Interval	2448'		
Top Log Interval	Surface Casing		
Casing Driller	8 5/8" @ 494'		
Casing Logger	495'		
Bit Size	7 7/8"		
Type Fluid in Hole	Water		
Density / Viscosity	///		
pH / Fluid Loss	///		
Source of Sample	///		
Rm @ Meas. Temp	///		
Rmf @ Meas. Temp	///		
Rmc @ Meas. Temp	///		
Source of Rmf / Rmc	///		
Rm @ BHT	///		
Time Circulation Stopped	3:00 P.M.		
Time Logger on Bottom	5:15 P.M.		
Maximum Recorded Temperature	115 DEG F		
Equipment Number	T697		
Location	Trinidad		
Recorded By	M. Norton		
Witnessed By	Mr. Don Johnson		

<<< Fold Here >>>

All interpretations are opinions based on inferences from electrical or other measurements and we cannot and do not guarantee the accuracy or correctness of any interpretation, and we shall not, except in the case of gross or willful negligence on our part, be liable or responsible for any loss, costs, damages, or expenses incurred or sustained by anyone resulting from any interpretation made by any of our officers, agents or employees. These interpretations are also subject to our general terms and conditions set out in our current Price Schedule.

Comments

Well Directions:

First Bosque entrance just before Weston, first right at Cherry Canyon, stay left at Y, stay on main road approx. five and half miles, turn right to location.



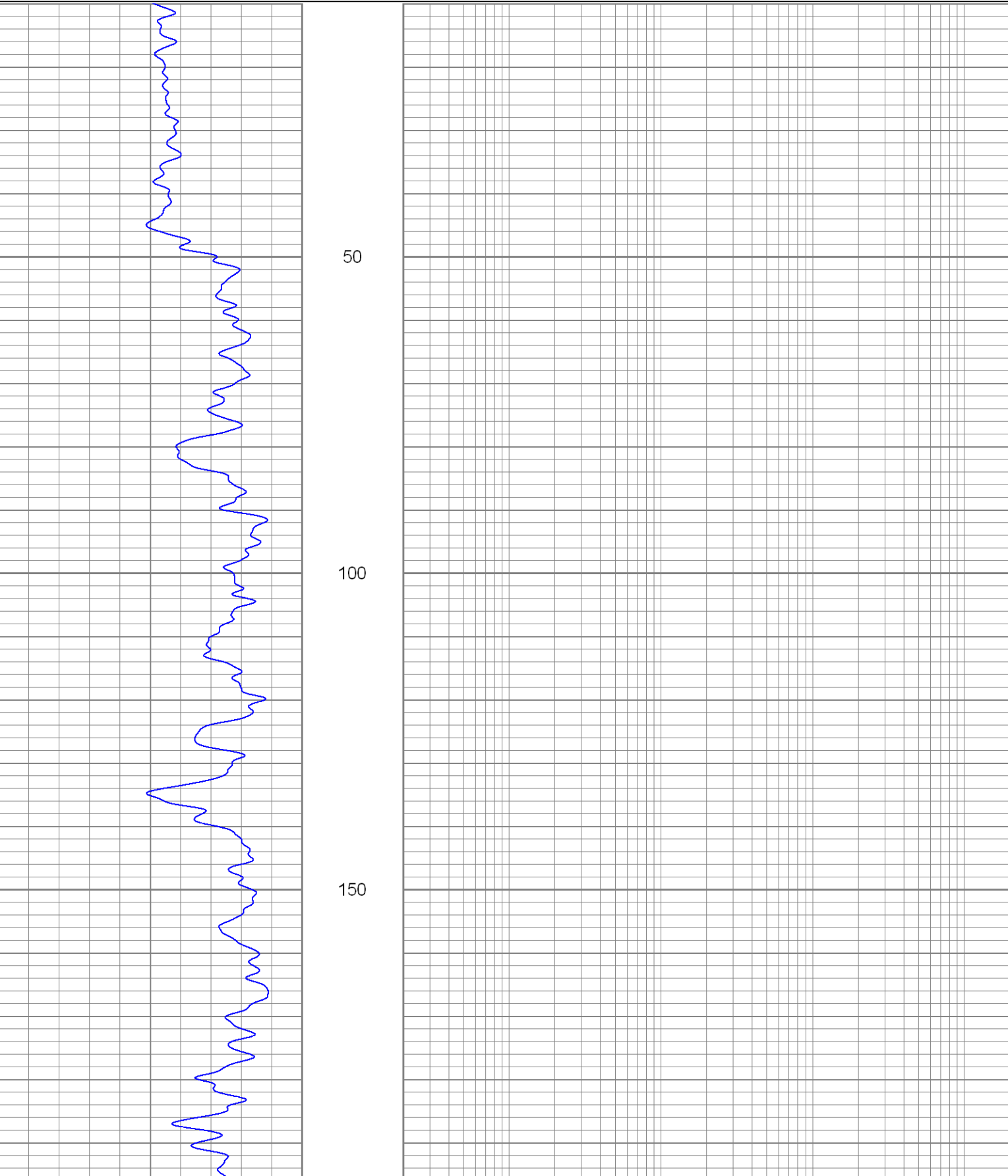
SUPERIOR

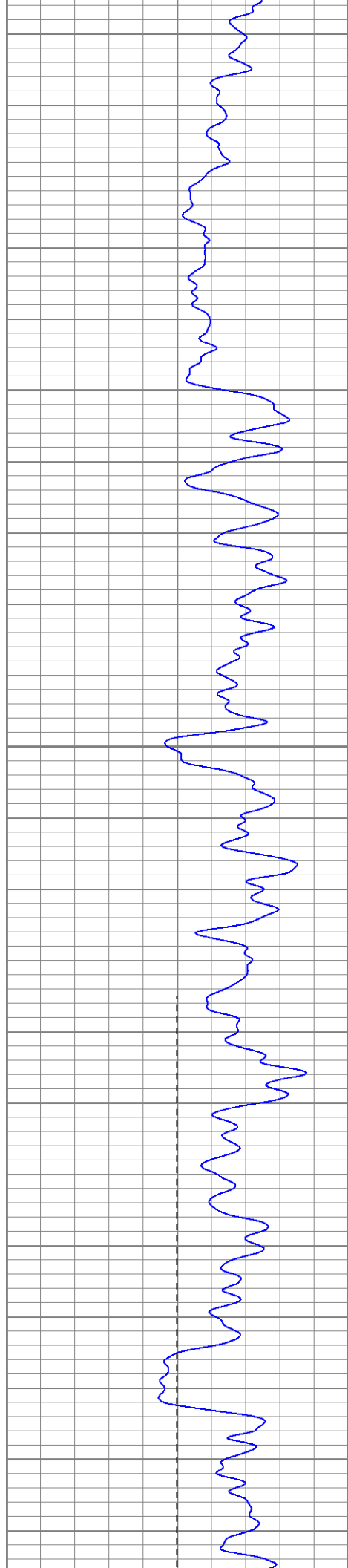
Black Lick, Pa.
Mercer, Pa.
Wooster, Oh.
Cleveland, Ok.
Trinidad, Co.

Main Pass

Database File: xtoge3106.db
Dataset Pathname: pass2.1
Presentation Format: dil
Dataset Creation: Wed Jun 20 18:45:28 2007 by Calc Open-Cased 061129
Charted by: Depth in Feet scaled 1:240

0	GR (GAPI)	200	0.2	RILM (Ohm-m)	2000
-100	SP (mV)	100	0.2	RILD (Ohm-m)	2000
			0.2	RLL3 (Ohm-m)	2000





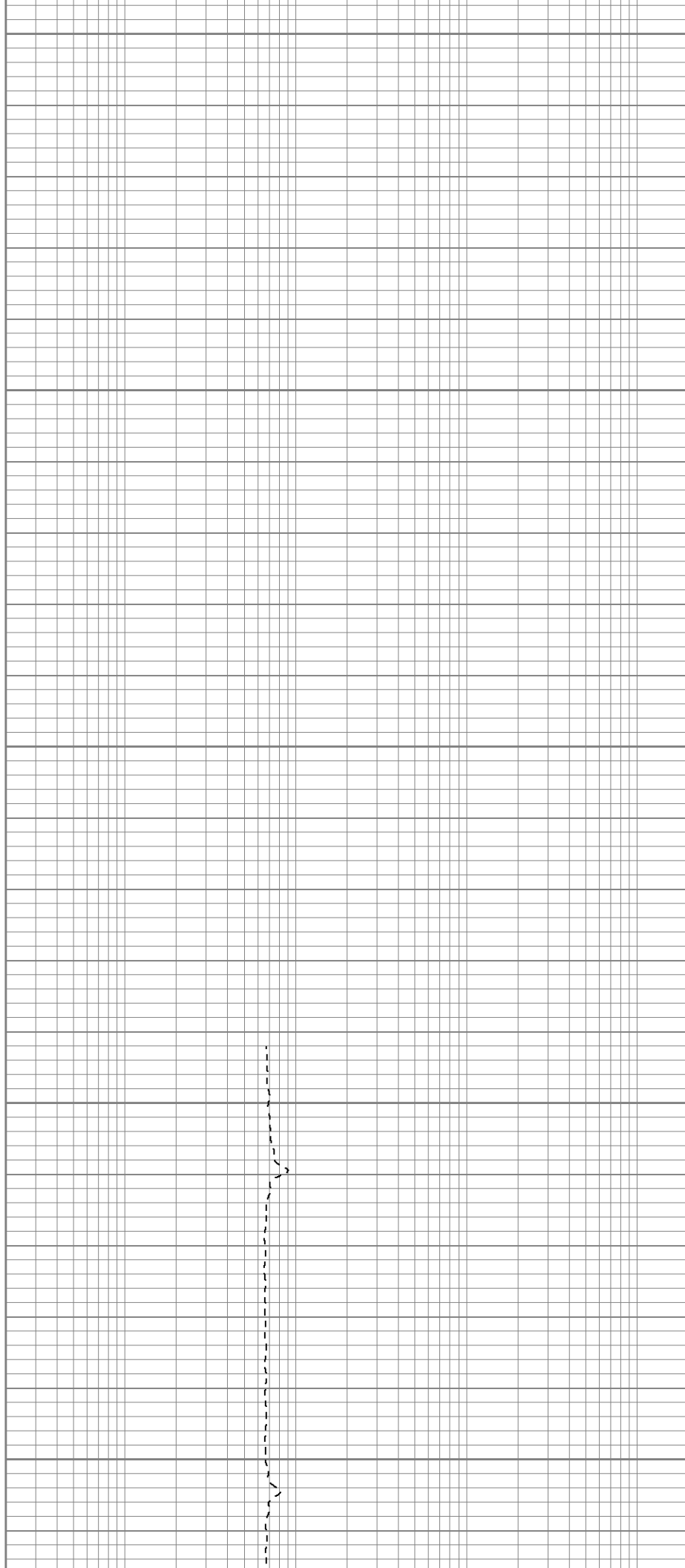
200

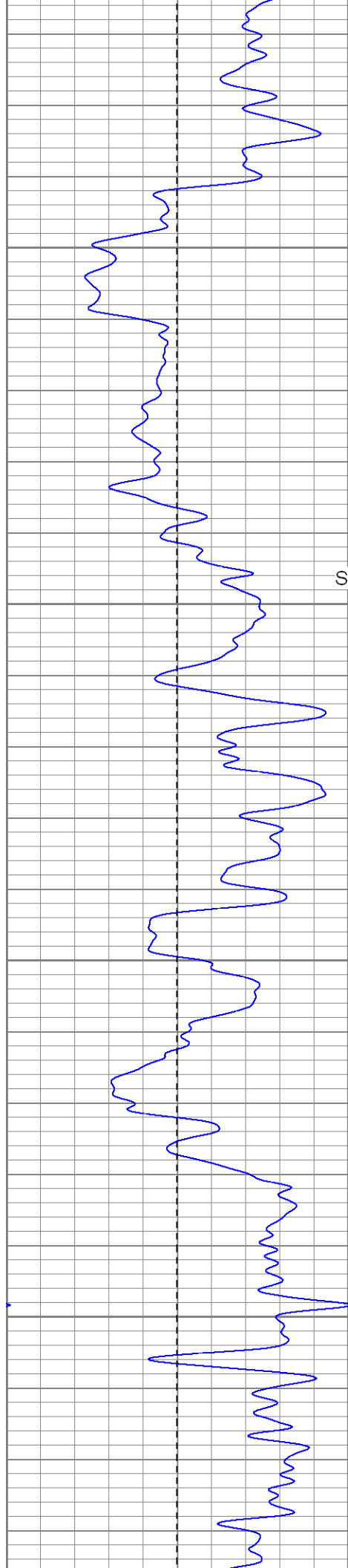
250

300

350

400





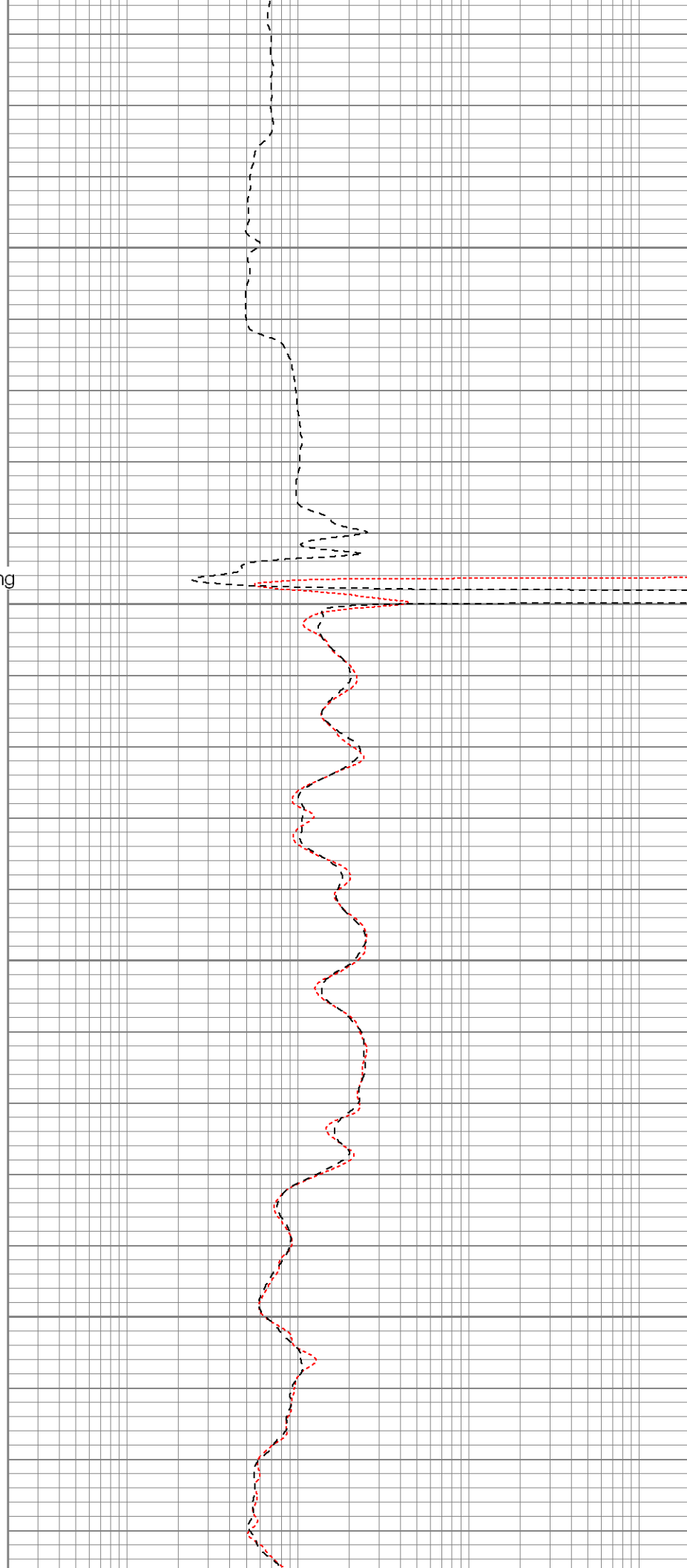
450

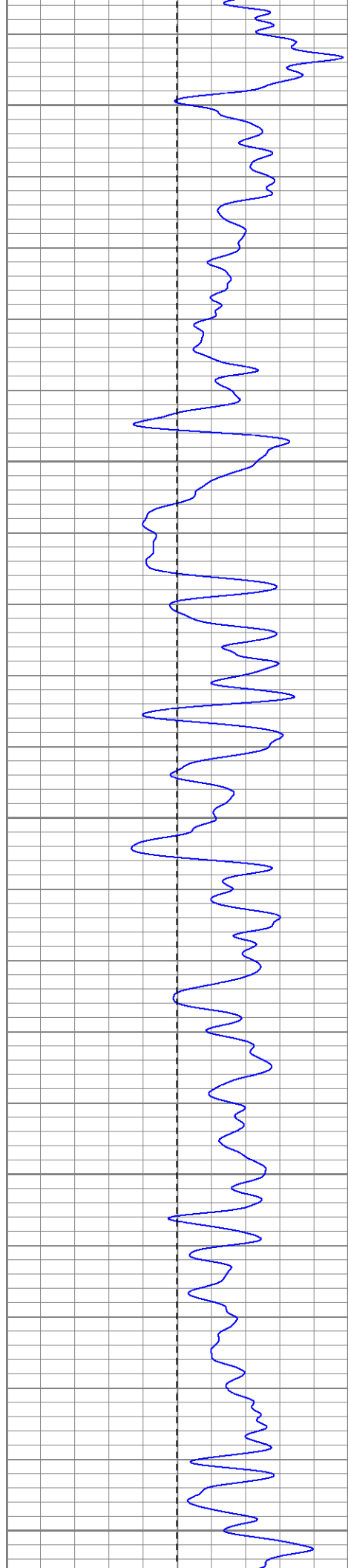
Surface Casing

500

550

600





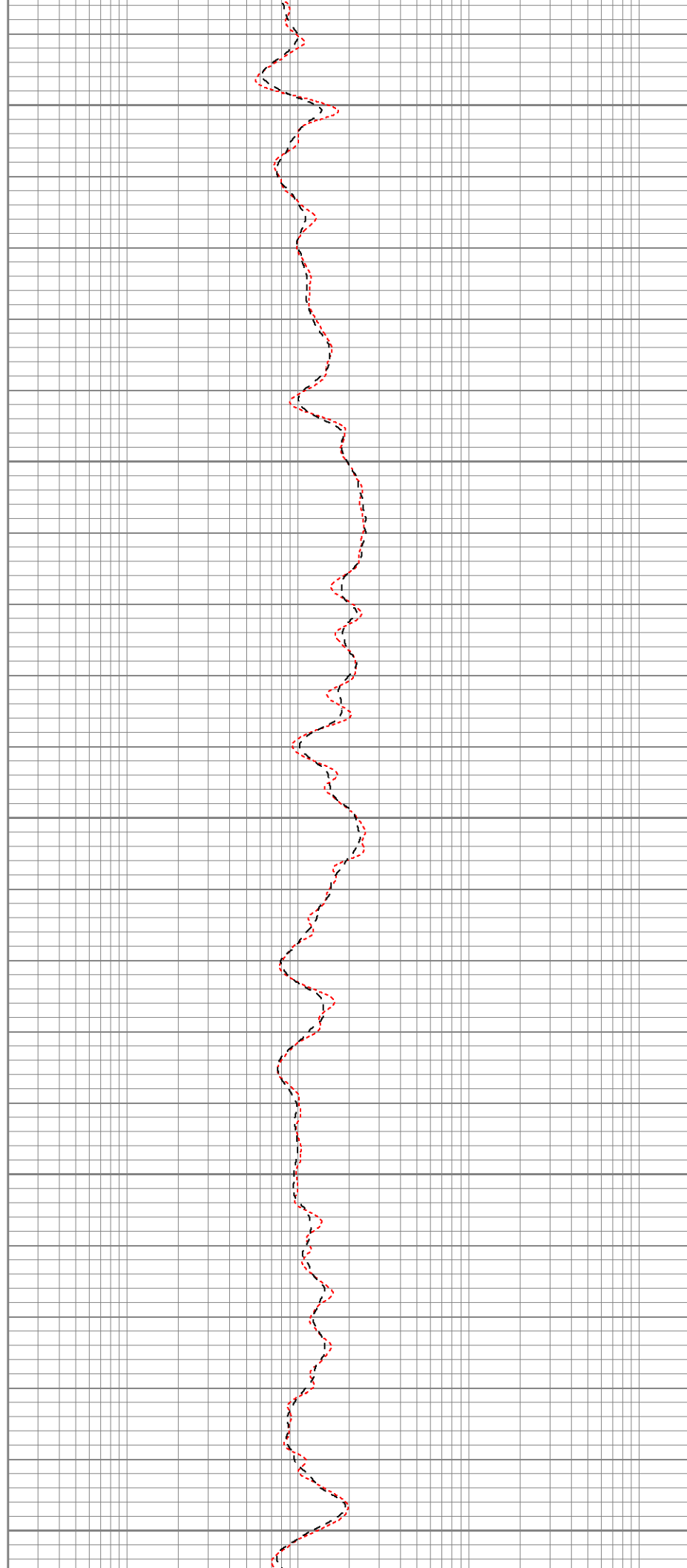
650

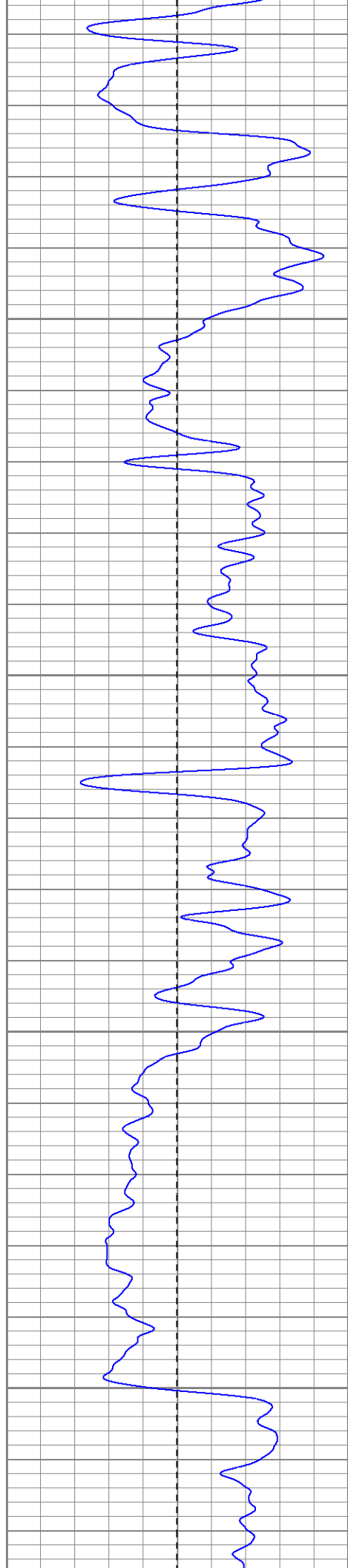
700

750

800

850



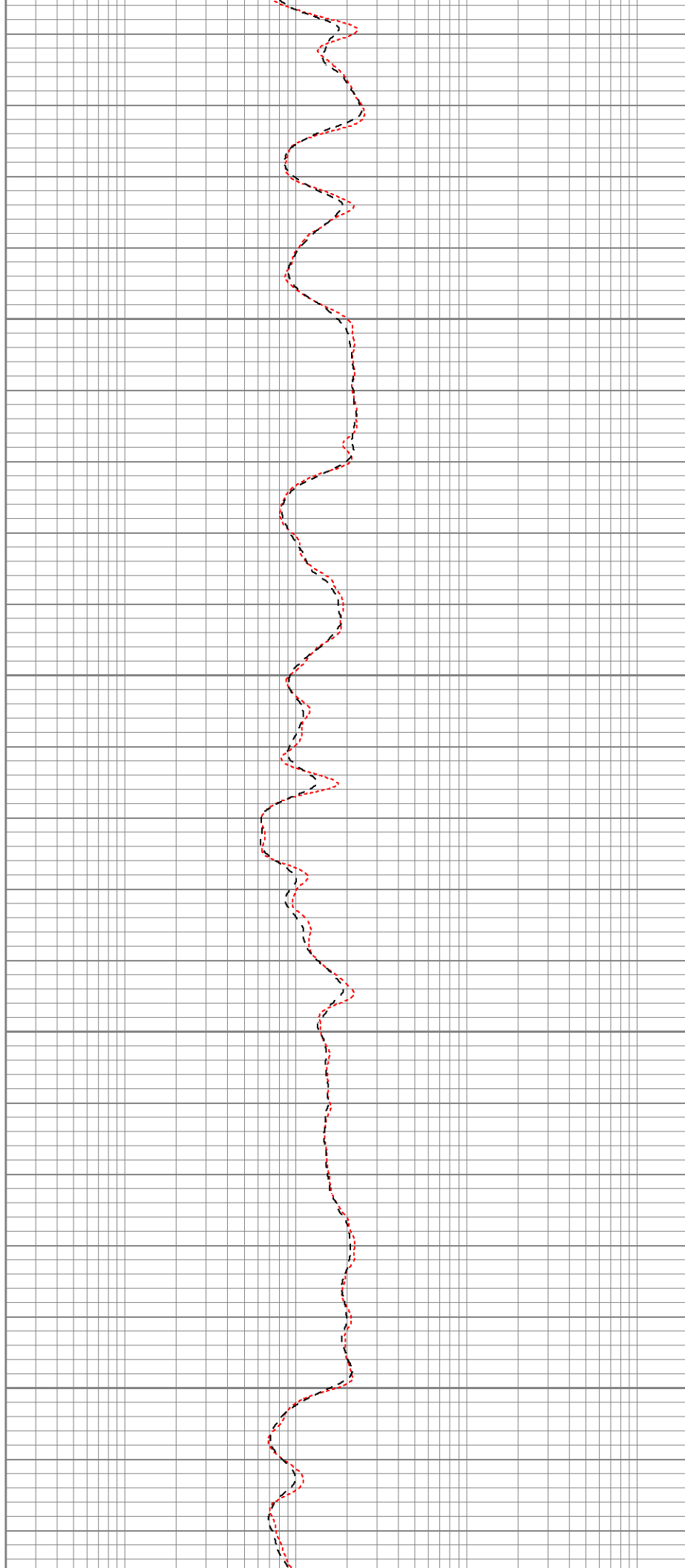


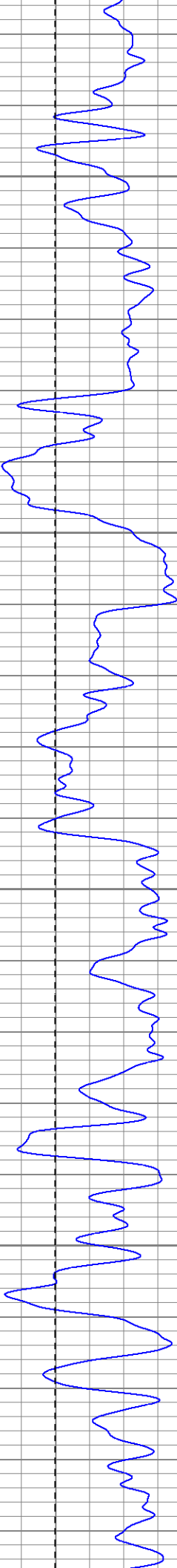
900

950

1000

1050



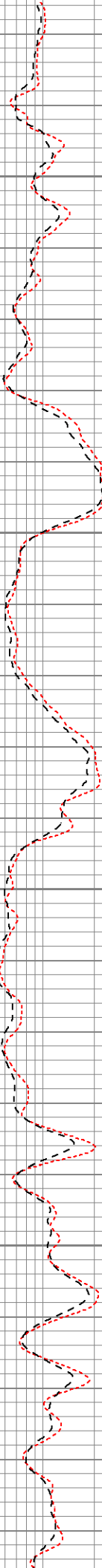


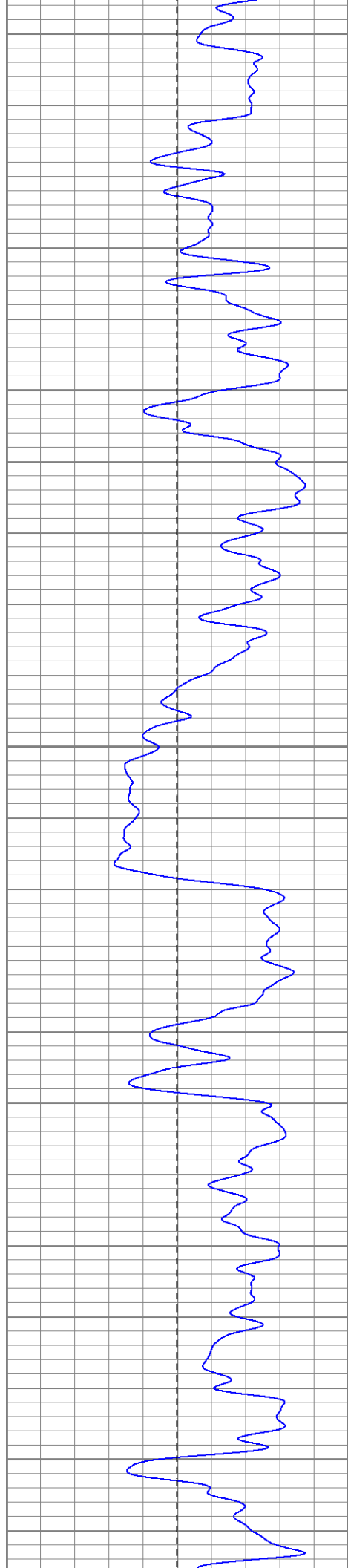
1100

1150

1200

1250





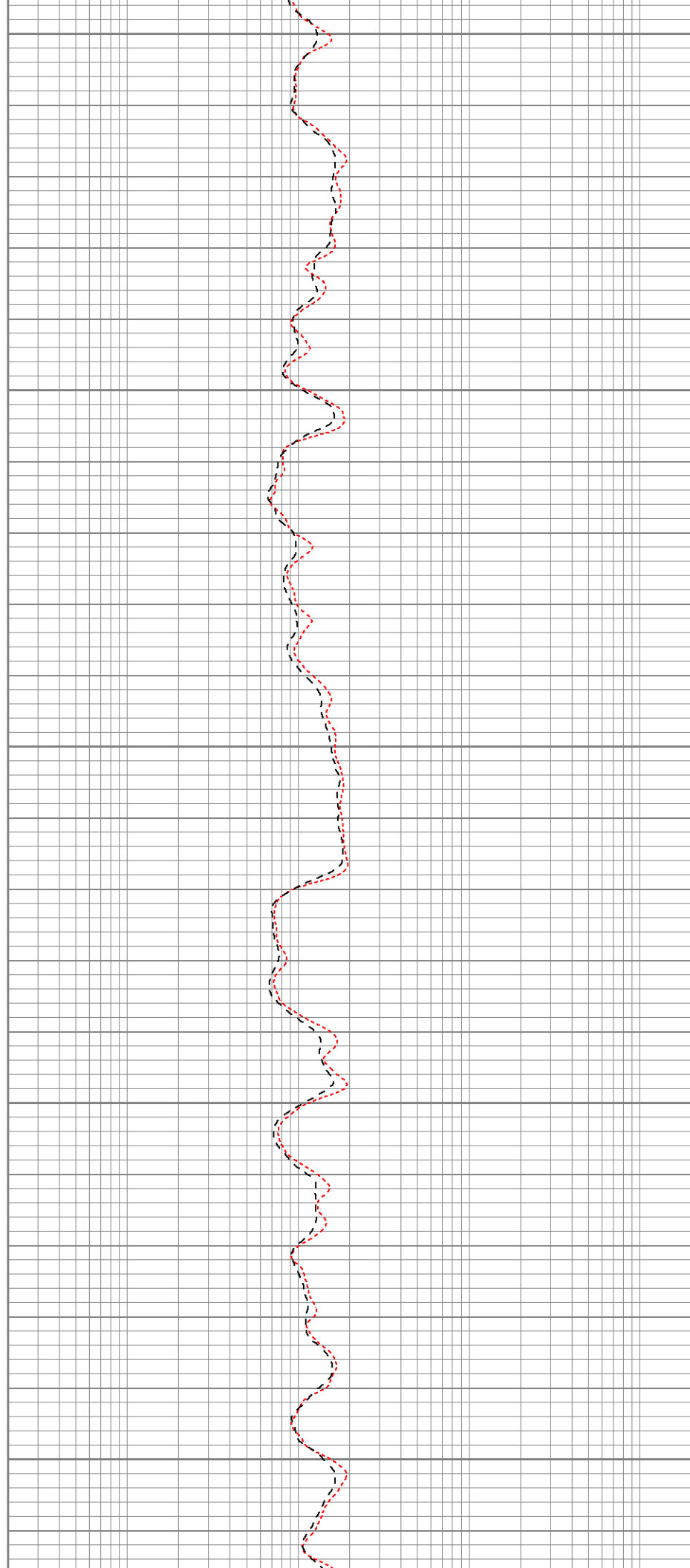
1300

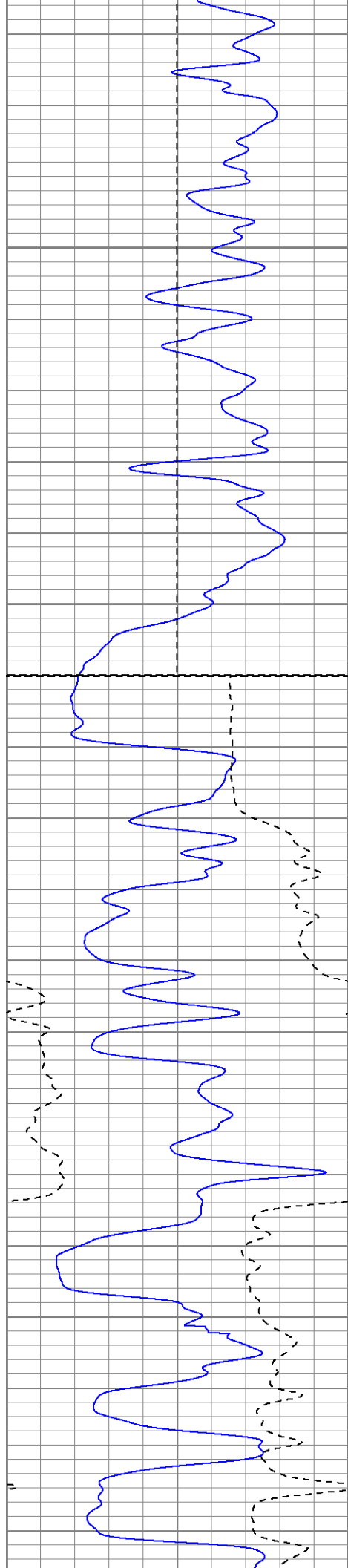
1350

1400

1450

1500





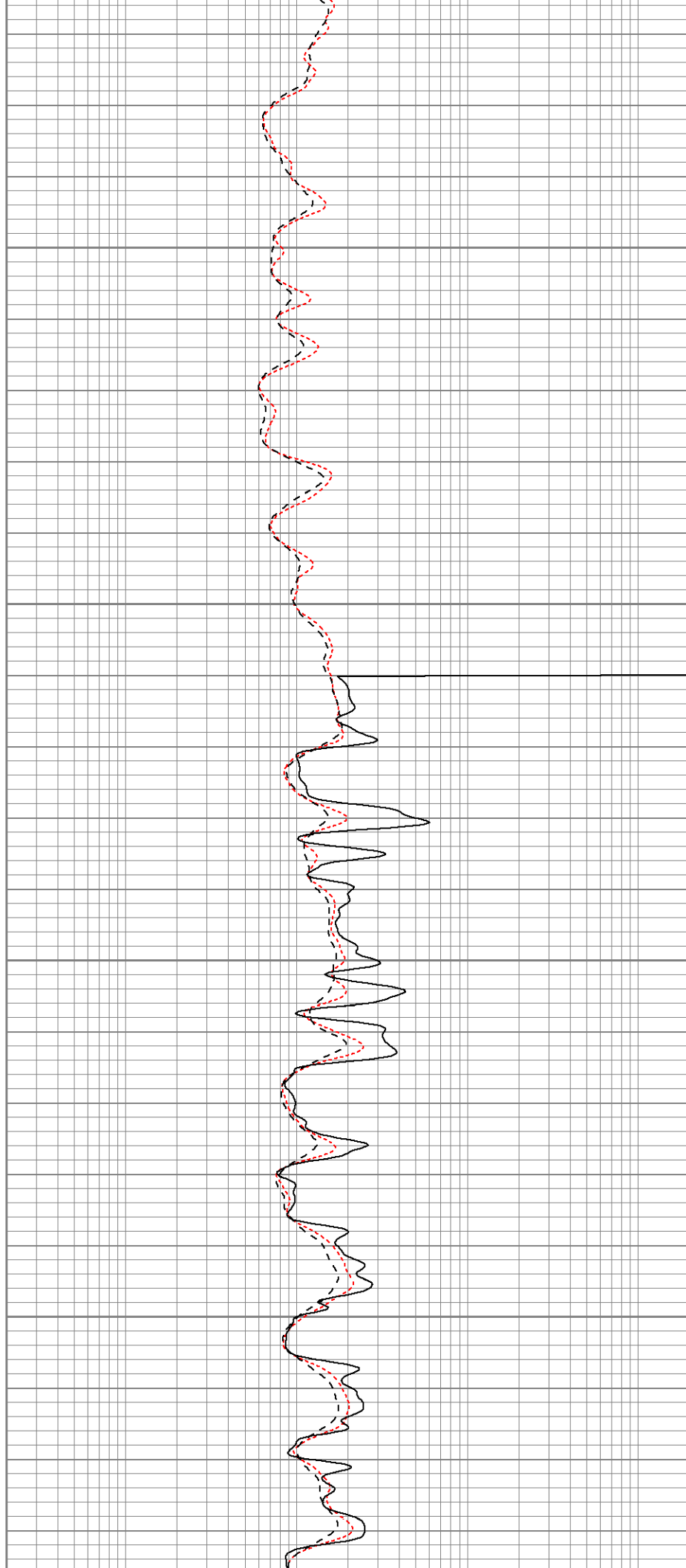
1550

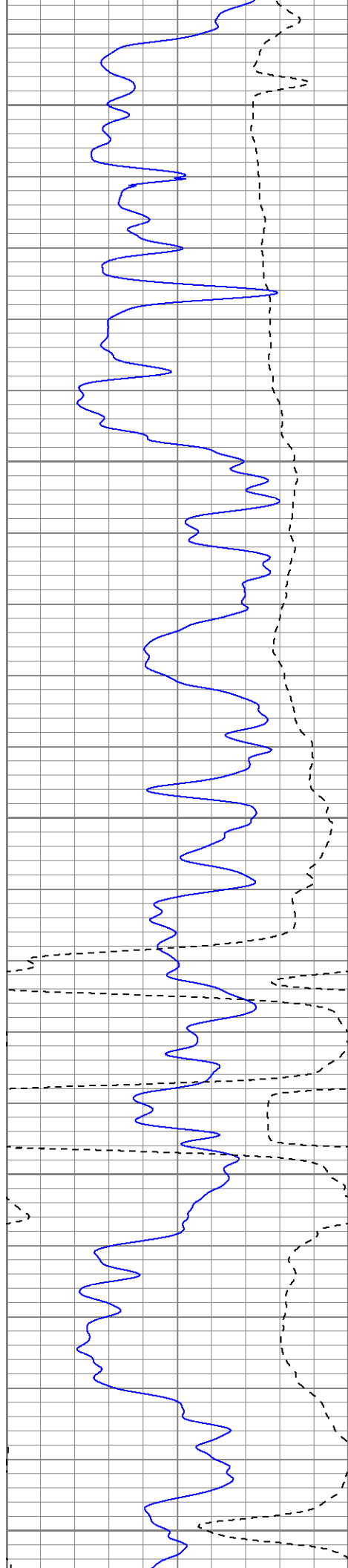
1600

Fluid Level

1650

1700





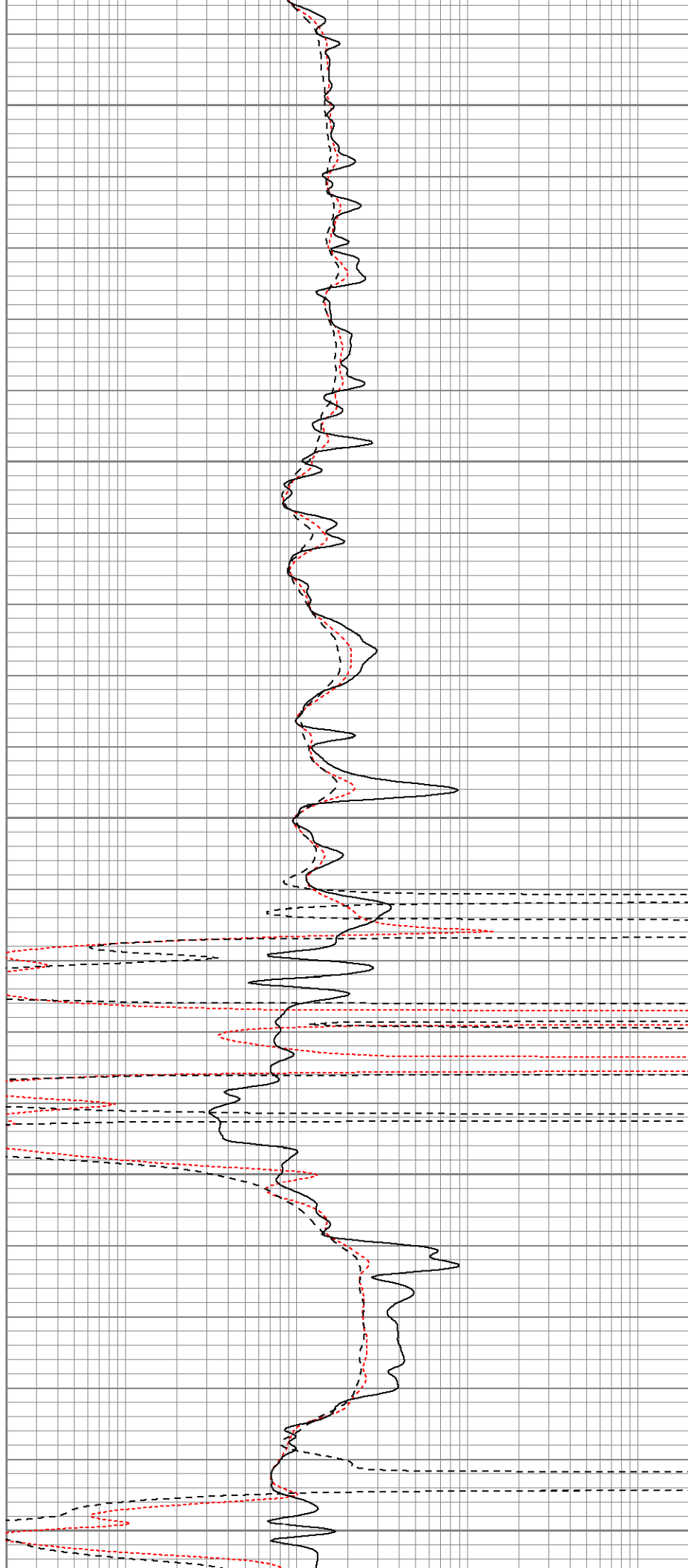
1750

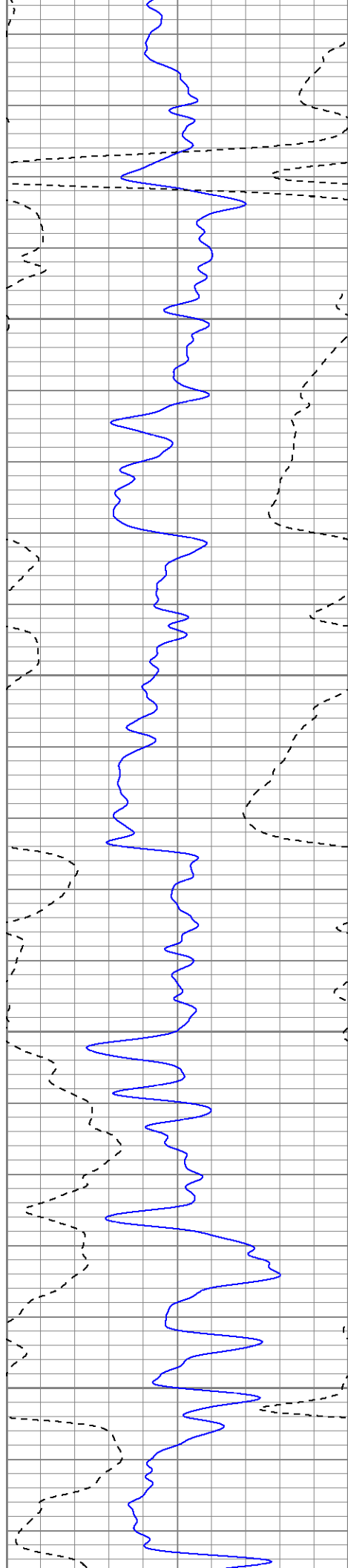
1800

1850

1900

1950



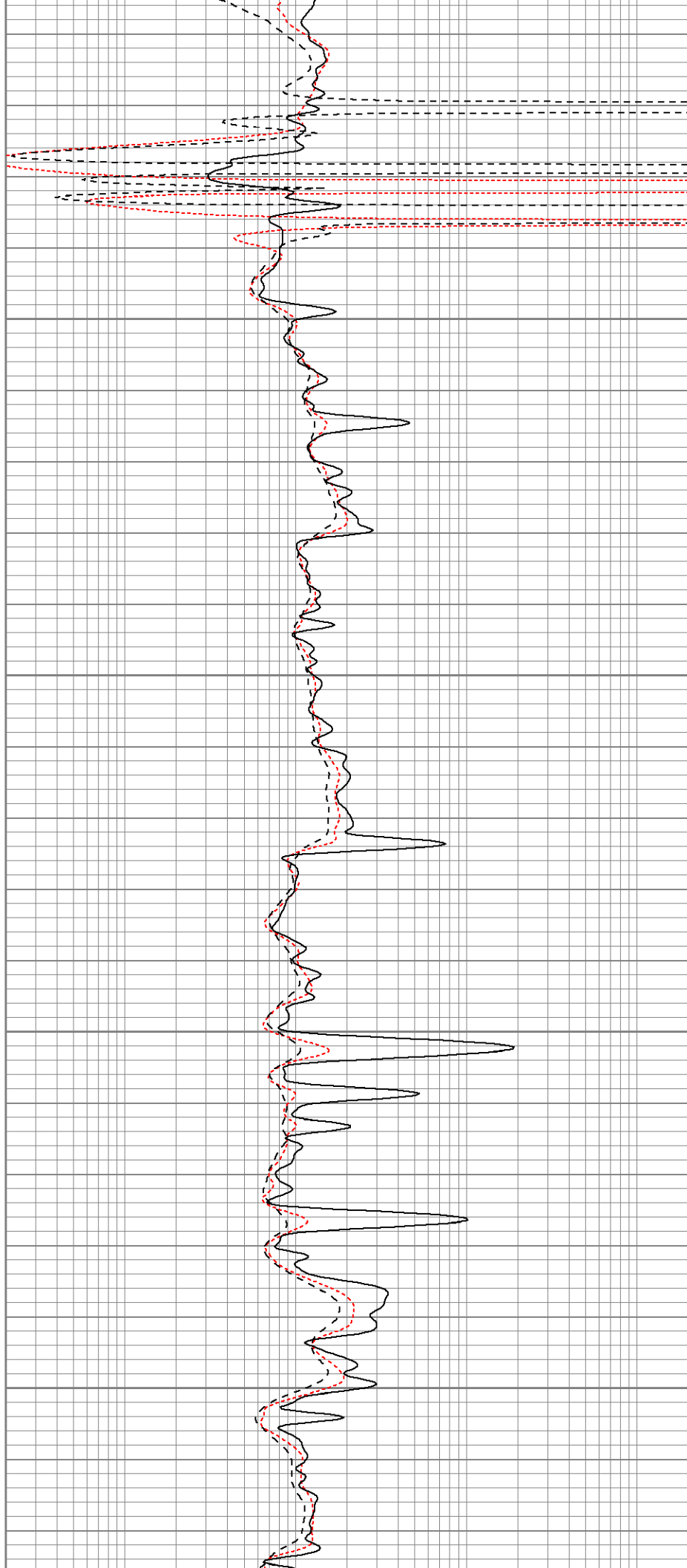


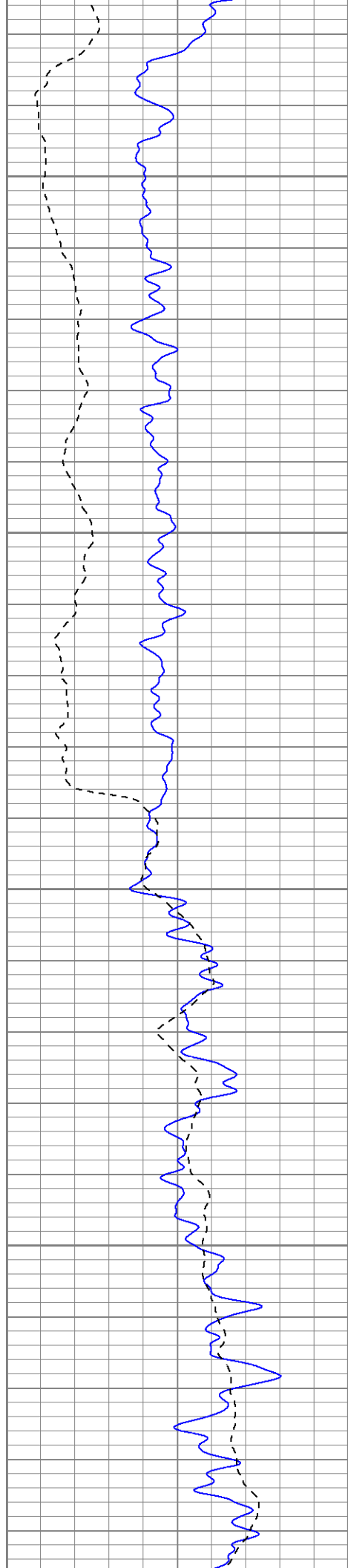
2000

2050

2100

2150



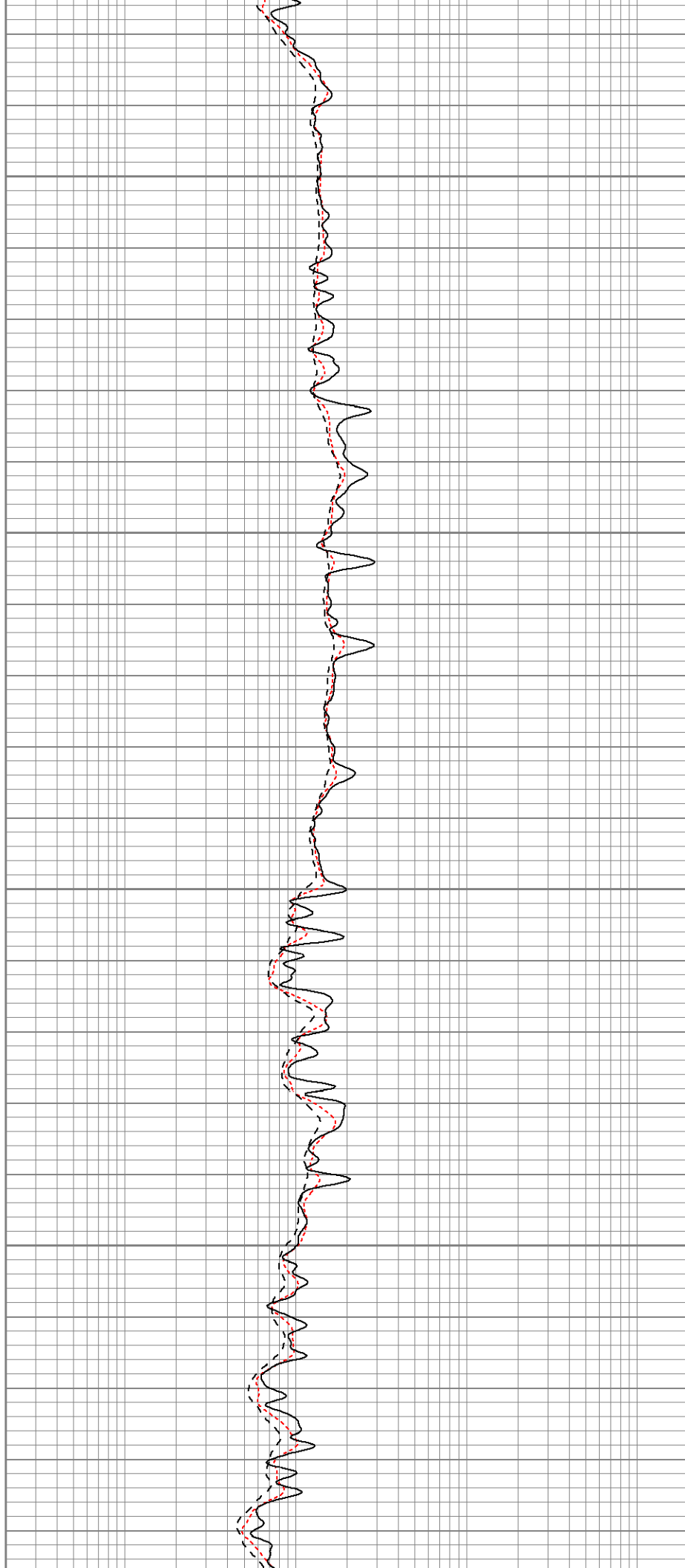


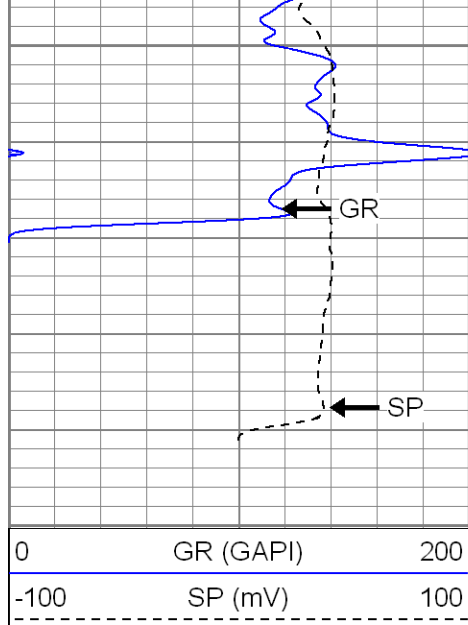
2200

2250

2300

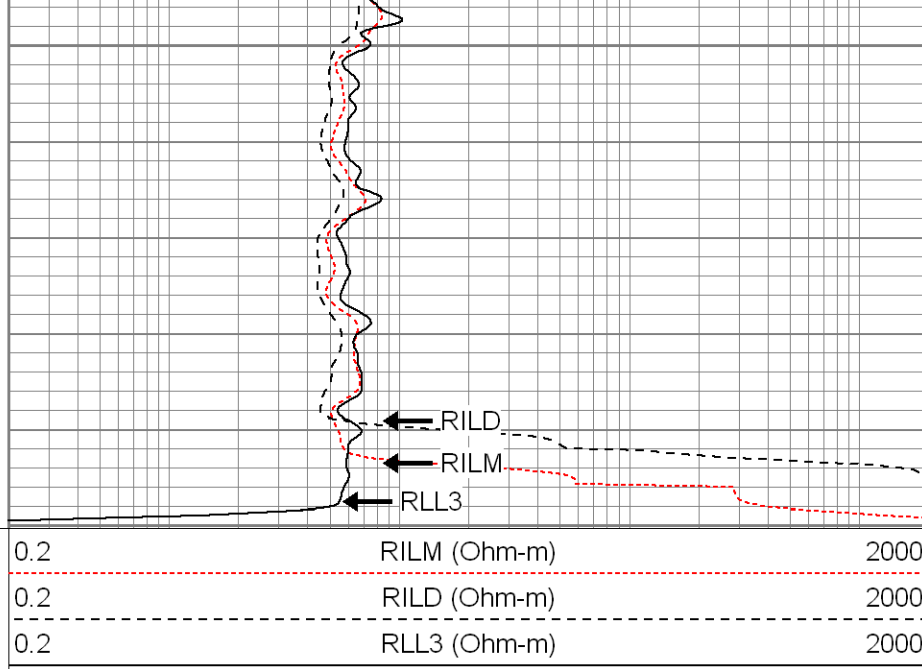
2350





2400

2450



SUPERIOR

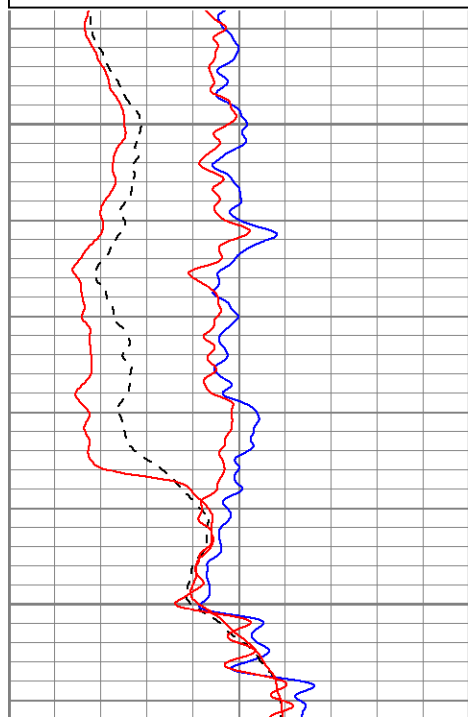
Black Lick, Pa.
Mercer, Pa.
Wooster, Oh.
Cleveland, Ok.
Trinidad, Co.

Repeat Section

Database File: xtoge3106.db
Dataset Pathname: pass1.1
Presentation Format: dil
Dataset Creation: Wed Jun 20 18:43:48 2007 by Calc Open-Cased 061129
Charted by: Depth in Feet scaled 1:240

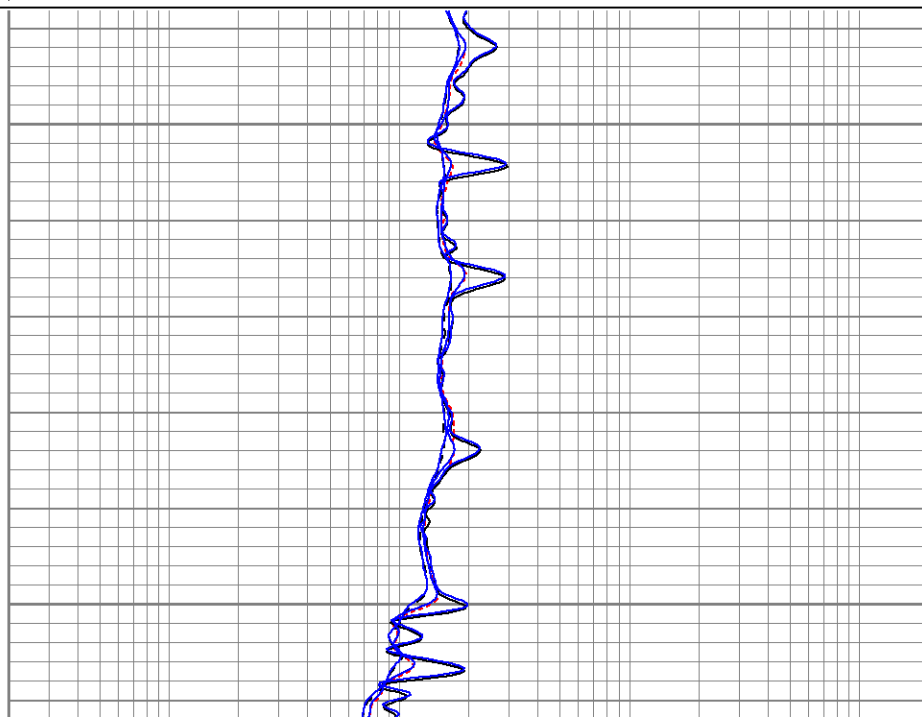
0	GR (GAPI)	200
-100	SP (mV)	100
0	GR-repeat (GAPI)	200
-100	SP-repeat (mV)	100

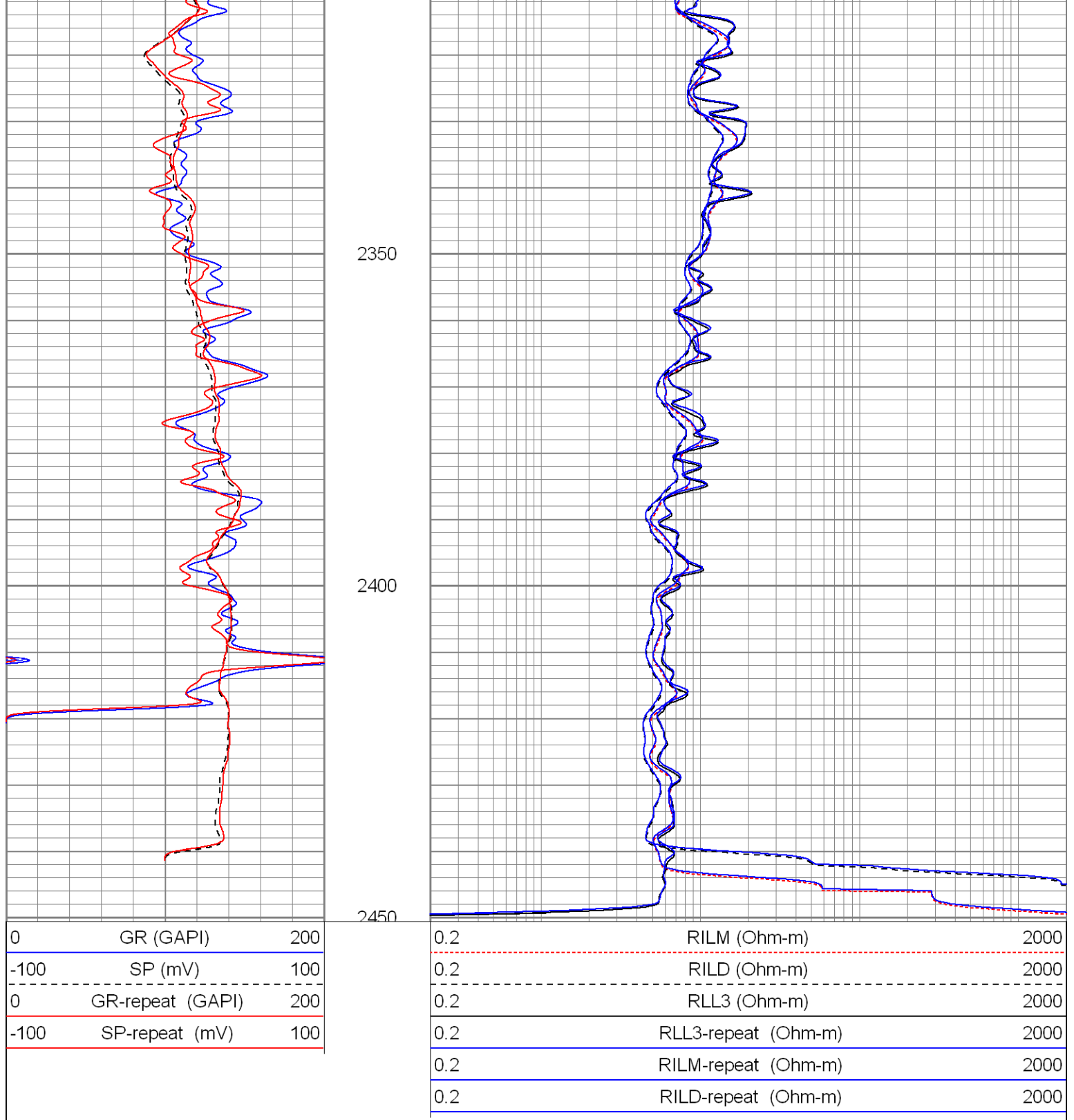
0.2	RILM (Ohm-m)	2000
0.2	RILD (Ohm-m)	2000
0.2	RLL3 (Ohm-m)	2000
0.2	RLL3-repeat (Ohm-m)	2000
0.2	RILM-repeat (Ohm-m)	2000
0.2	RILD-repeat (Ohm-m)	2000



2250

2300





Calibration Report

Database File: xtoge3106.db
 Dataset Pathname: pass2
 Dataset Creation: Wed Jun 20 17:29:02 2007 by Log Open-Cased 061129

Dual Induction Calibration Report

Serial-Model: 5375-G
 Surface Cal Performed: Thu Apr 26 17:31:10 2007
 Downhole Cal Performed: Thu Apr 26 17:31:26 2007

Surface Calibration

Readings

References

Results

Readings			References			Results		
Loop:	Air	Loop		Air	Loop		m	b
Deep	0.001	0.620	V	0.000	500.000	mmho-m	807.659	-1.119
Medium	0.005	0.743	V	0.000	550.000	mmho-m	744.727	-3.505
Internal:	Zero	Cal		Zero	Cal		m	b
Deep	0.001	0.620	V	0.000	500.000	mmho-m	807.698	-1.159
Medium	0.005	0.743	V	0.000	550.000	mmho-m	744.801	-3.569
Downhole Calibration								
Readings			References			Results		
Internal:	Zero	Cal		Zero	Cal		m	b
Deep	0.123	499.901	mmho-m	0.039	500.015	mmho-m	1.000	-0.084
Medium	0.245	549.982	mmho-m	0.064	550.009	mmho-m	1.000	-0.182
Shallow	2.506	0.009	V	500.000	2.000	Ohm-m	85.000	0.000
Compensated Density Calibration Report								
Serial-Model:				2118-poilex				
Source / Verifier:				/				
Master Calibration Performed:				Mon May 14 16:51:32 2007				
Master Calibration								
Density			Far Detector		Near Detector			
Magnesium	1.710	g/cc	665.94		685.05		cps	
Aluminum	2.590	g/cc	149.68		463.33		cps	
Spine Angle = 75.32			Density/Spine Ratio = 0.570					
Size			Reading					
Small Ring	7.85	in	4.15		V			
Large Ring	14.00	in	9.25		V			
Gamma Ray Calibration Report								
Serial Number:			2001					
Tool Model:			OH					
Performed:			Tue May 29 19:51:06 2007					
Calibrator Value:			1.0		GAPI			
Background Reading:			0.0		cps			
Calibrator Reading:			1.0		cps			
Sensitivity:			0.1700		GAPI/cps			
Neutron Calibration Report								
Serial Number:			5145					
Tool Model:			G					
Performed:			Mon Apr 23 18:30:25 2007					
Calibrator Value:			1200		NAPI			
Calibrator Reading:			1700		cps			
Sensitivity:			1		NAPI/cps			

Sensor	Offset (ft)	Schematic	Description	Len (ft)	OD (in)	Wt (lb)
NEU	37.19		None	0.75	1.50	5.00
			NEU-G (5145) Gearhart Epithermal	5.75	3.50	85.00
GR	31.62		GR-OH (2001) SIE	3.50	3.25	40.00
LSD DCAL SSD	23.45		CDL-poilex (2118)	8.79	4.00	275.00
	23.04					
	22.91					
CILD SP	10.60		DIL-G (5375) Gearhart	20.83	4.00	345.00
	10.60					
CILM	6.89					
RLL3	1.70					
Dataset: xtoge3106.db: field/well/run1/pass2 Total Length: 39.62 ft Total Weight: 750.00 lb O.D. 4.00 in						