

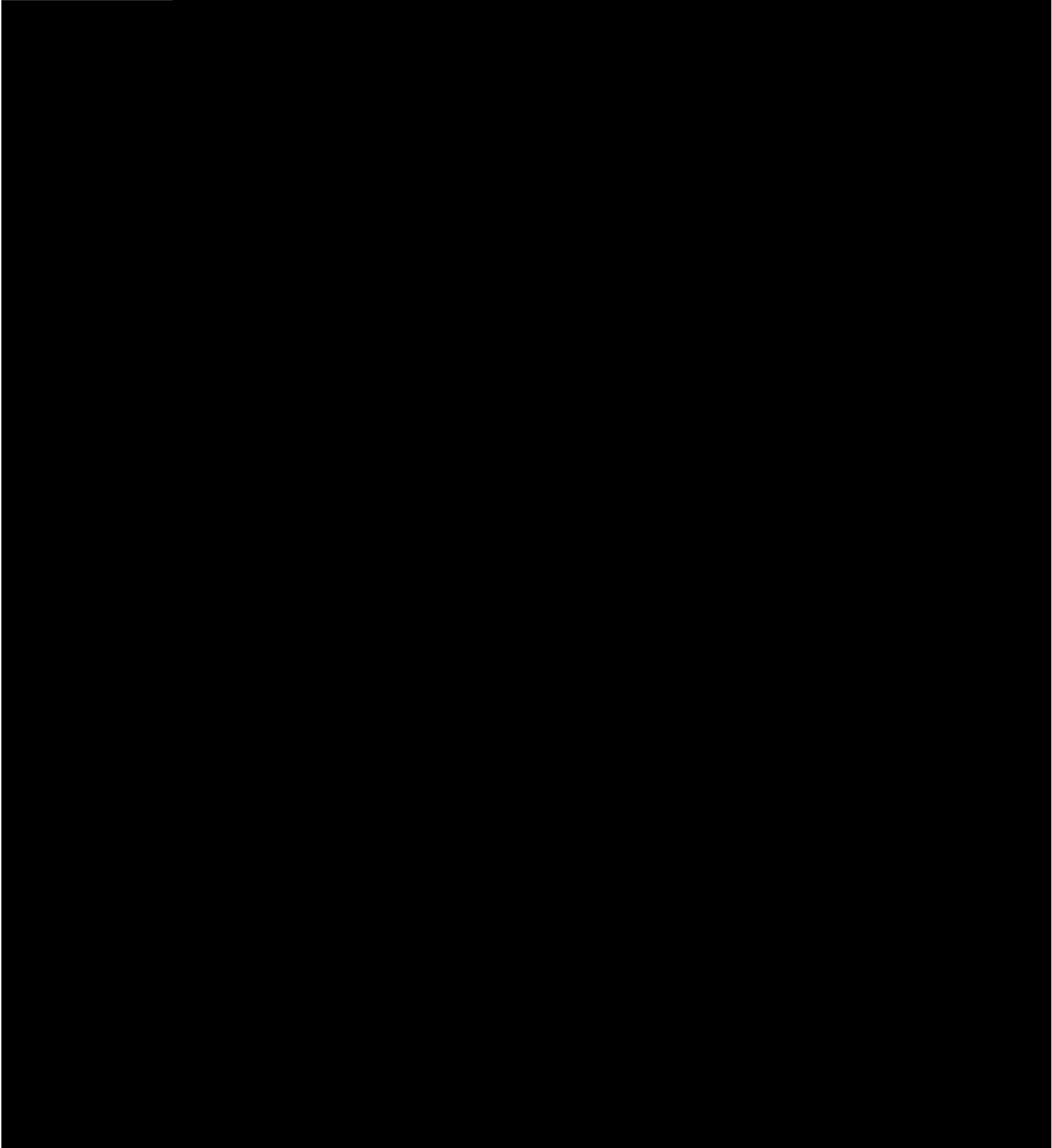
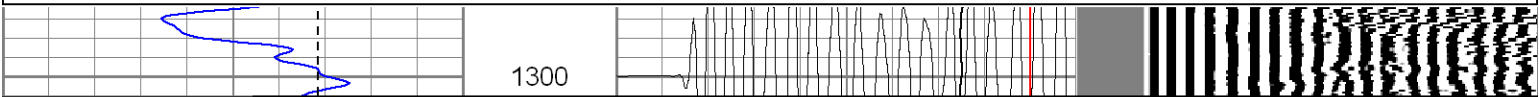
**Patterson**

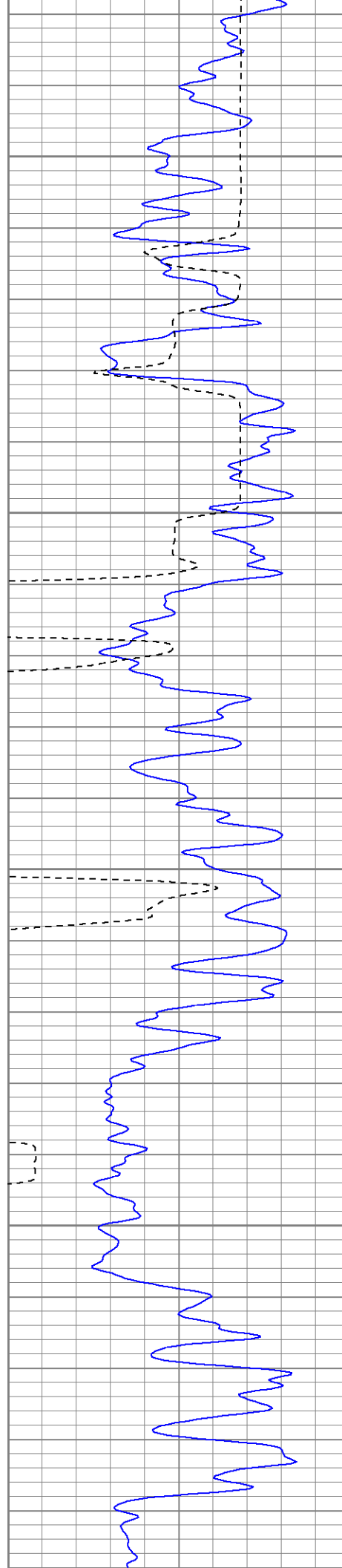
**CEMENT BOND  
GAMMA RAY**

CompanyXTO Energy Inc.				Company XTO Energy Inc.			
Well Golden Eagle 32-05				Well Golden Eagle 32-05			
Field Purgatorie River				Field Purgatorie River			
County Las Animas				County Las Animas			
State CO				State CO			
Location: API # : 05 071 08656 00				Other Serv			
SEC 32 TWP 33S RGE 67W				Elevation			
Permanent Datum Ground Level				K.B. -----			
Log Measured From Ground Level				D.F. -----			
Drilling Measured From Ground Level				G.L. 7932'			
2979' FNL & 1487' FWL							
Date 3/2/06							
Run Number one							
Depth Driller 2665'							
Depth Logger 2558'							
Bottom Logged Interval 2554'							
Top Log Interval Surf.							
Open Hole Size 7 7/8"							
Type Fluid water							
Density / Viscosity ///							
Max. Recorded Temp. ///							
Estimated Cement Top 1488'							
Time Well Ready 2:55							
Time Logger on Bottom 3:05							
Equipment Number T244							
Location Trinidad							
Recorded By Worley							
Witnessed By							
Borehole Record				Tubing Record			
Run Number Bit From To Size Weight From To							
Casing Record				Size Wgt/Ft Top Bottom			
Surface String 8 5/8"				00 724'			
Prot. String							
Production String 5 1/2"				00 NA			
Liner							

Database File: ge32-05b3206.db  
Dataset Pathname: pass2  
Presentation Format: cblrt  
Dataset Creation: Thu Mar 02 15:09:19 2006 by Log Warrior 7.0 STD Cas  
Charted by: Depth in Feet scaled 1:240

0	GR (GAPI)	200	0	AMP3 (mV)	100	200	Variable Density	1200
400	TT3 (usec)	200	18	CCL	-2			
			200	CBL5	1200			





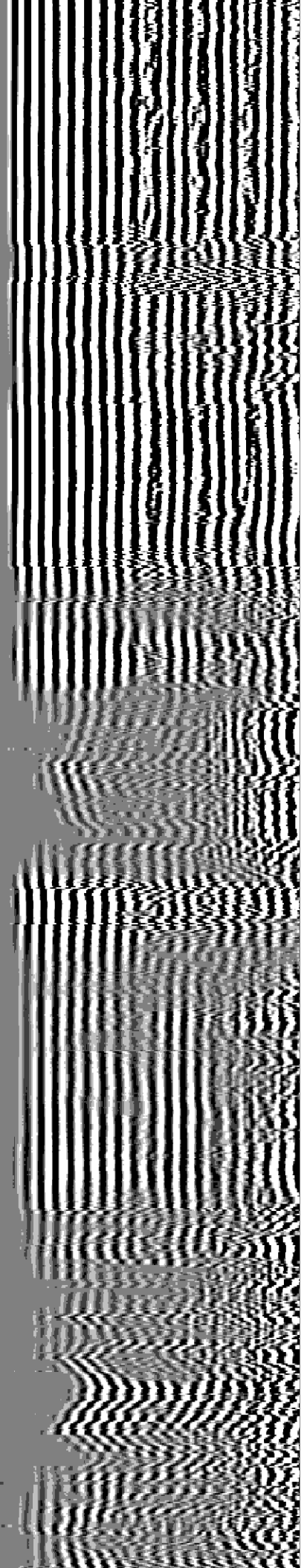
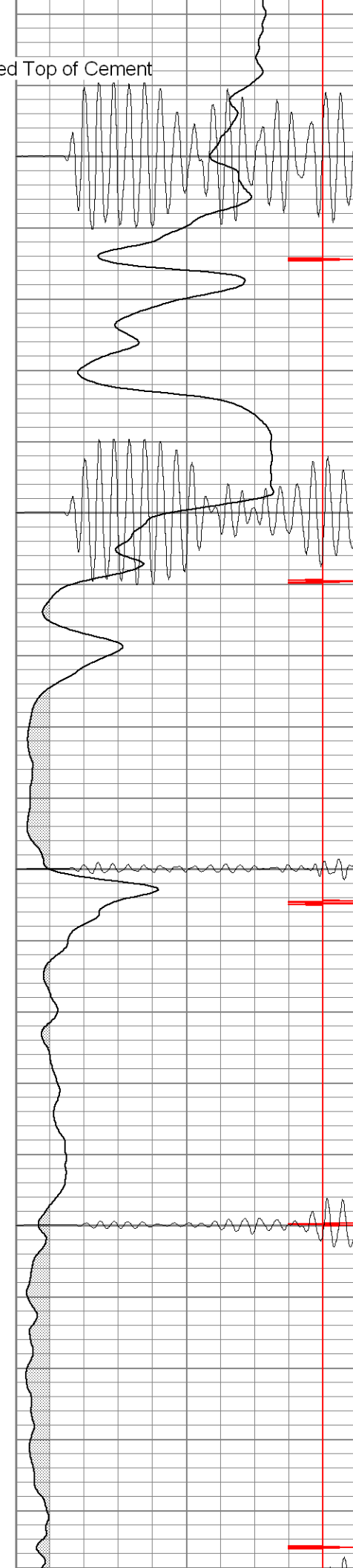
Estimated Top of Cement

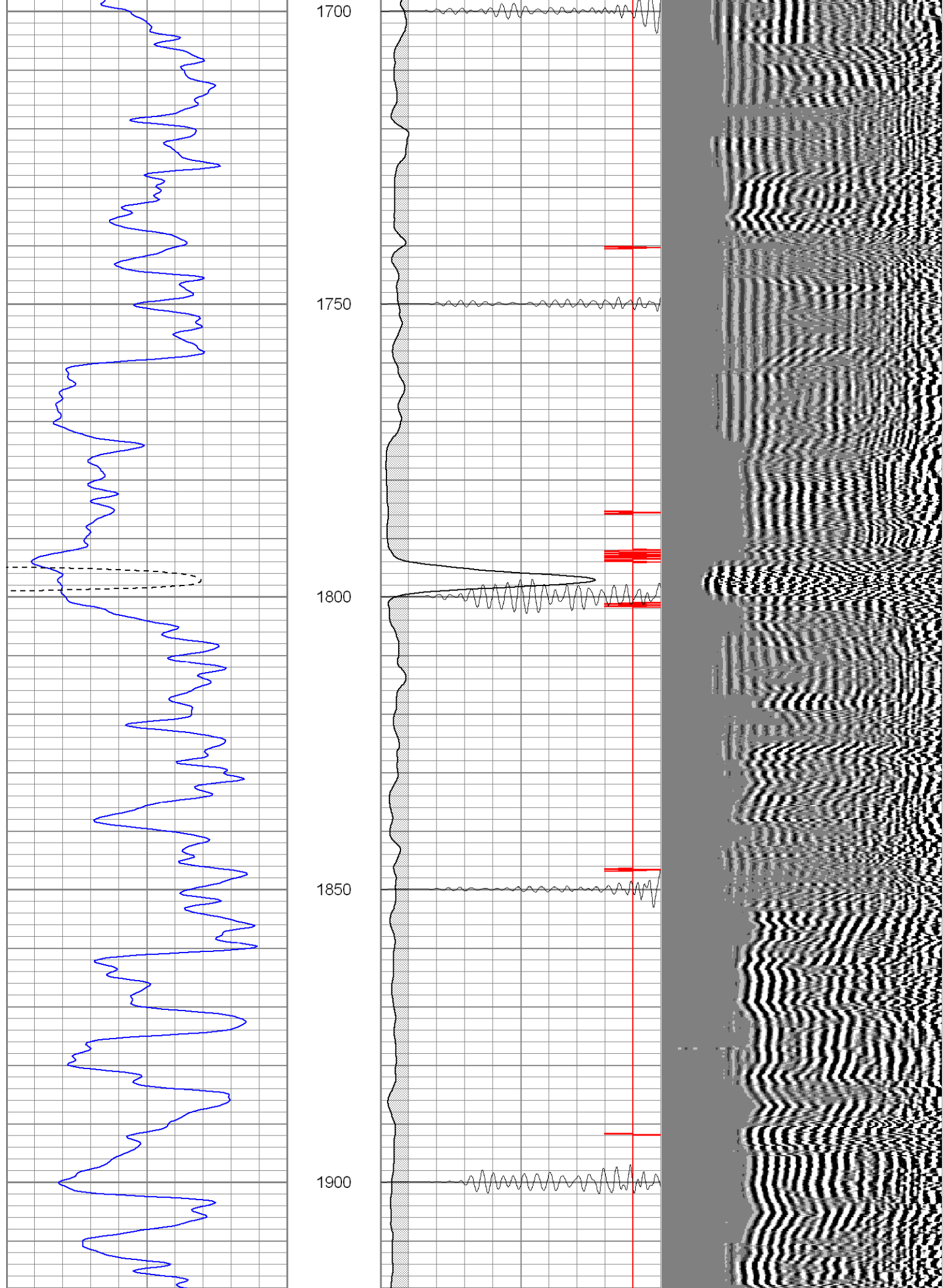
1500

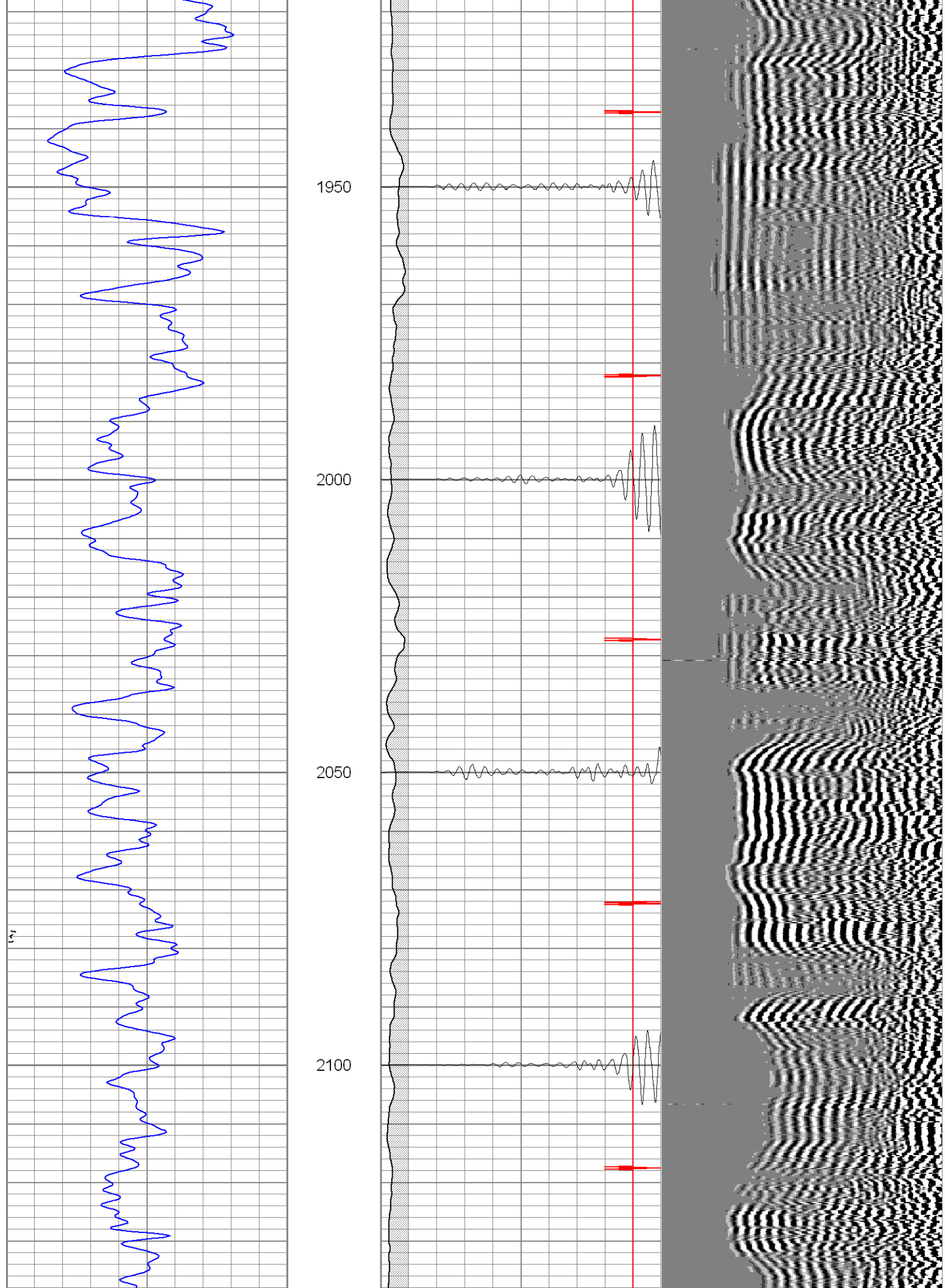
1550

1600

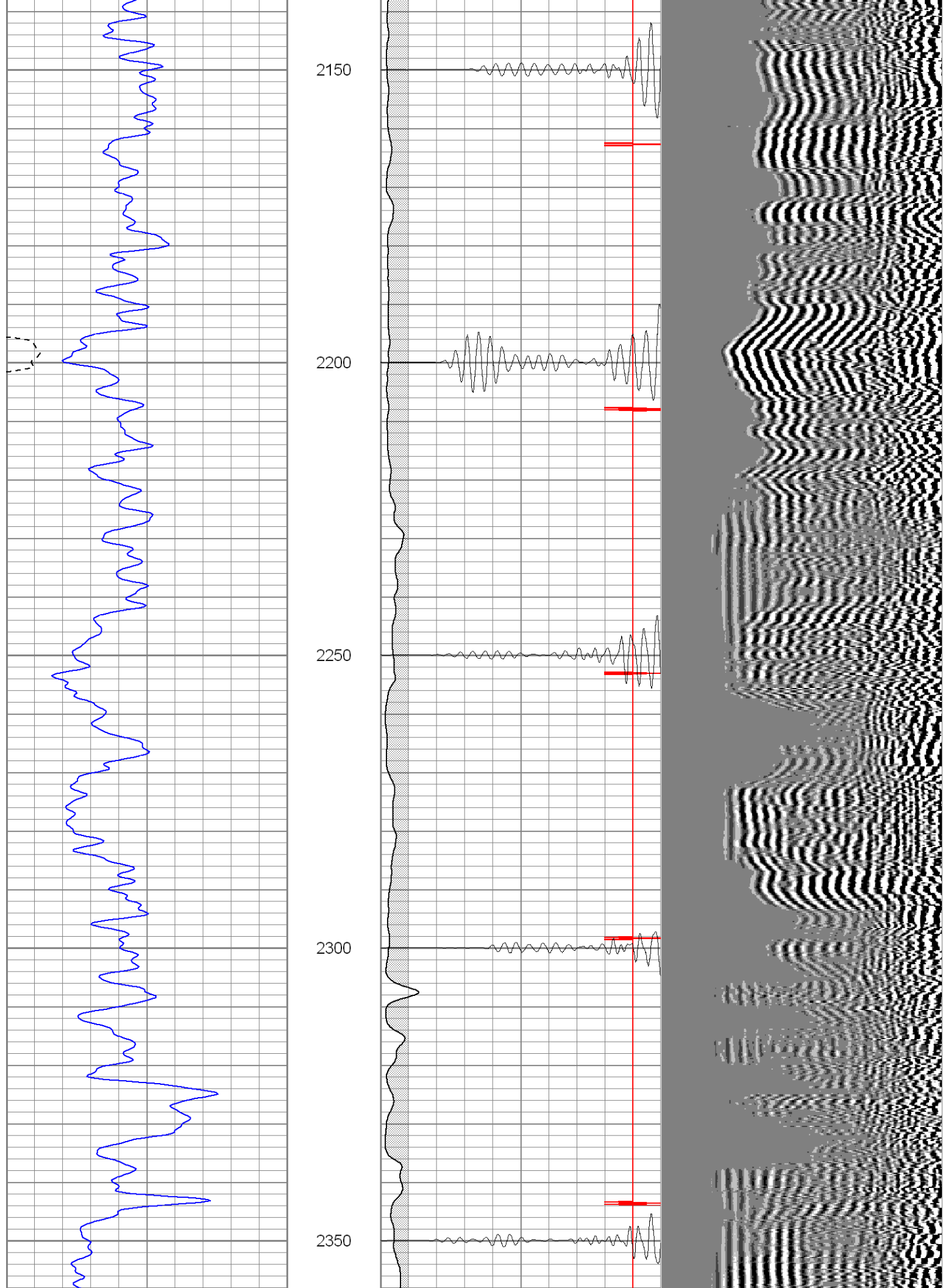
1650

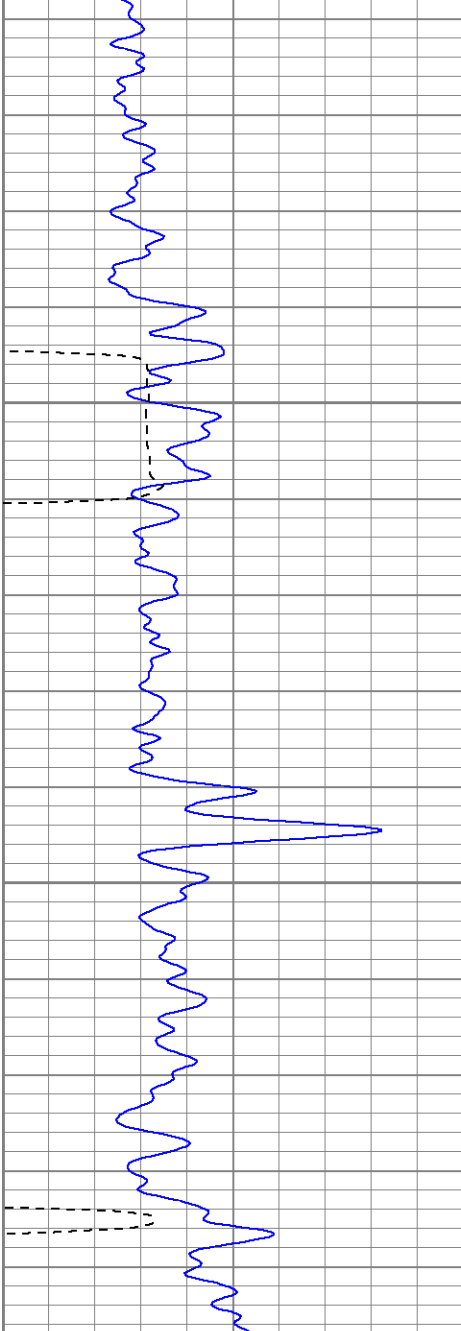






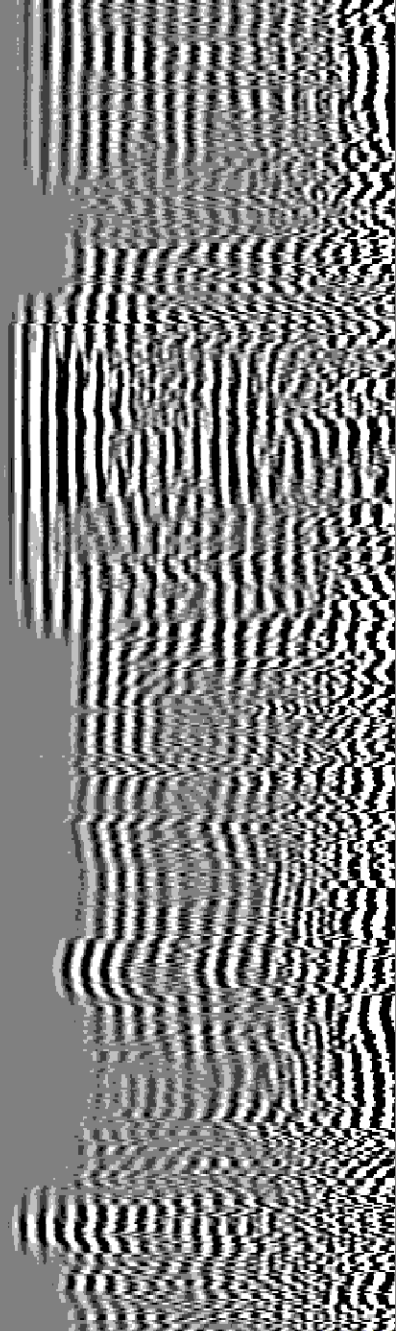
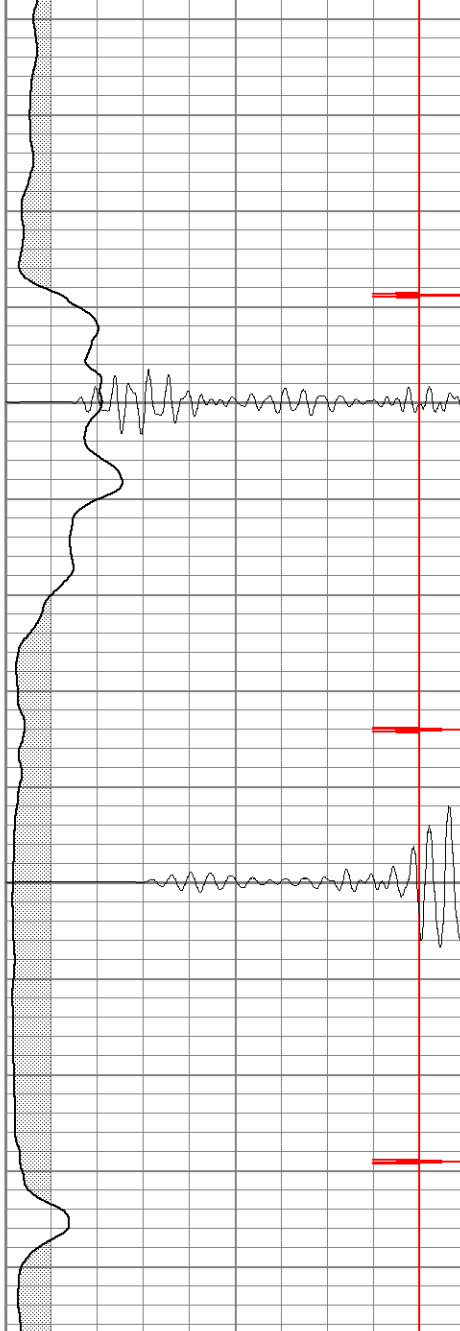






2400

2450

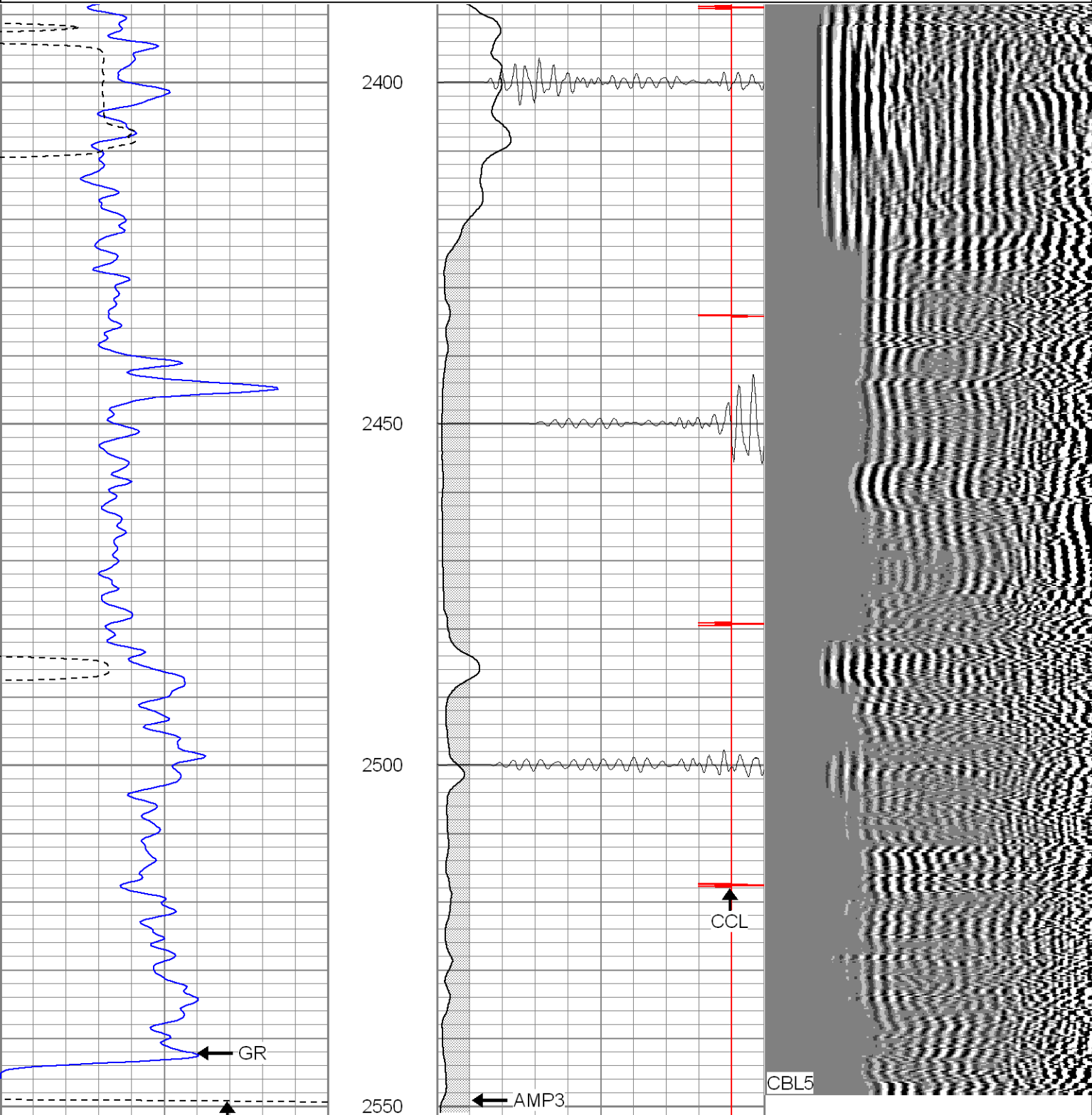


Database File: ge32-05b3206.db  
Dataset Pathname: pass1  
Presentation Format: cblrt  
Dataset Creation: Thu Mar 02 15:03:14 2006 by Log Warrior 7.0 STD Cas  
Charted by: Depth in Feet scaled 1:240

0	GR (GAPI)	200
400	TT3 (usec)	200

0	AMP3 (mV)	100
18	CCL	-2
200	CBL5	1200

200 Variable Density 1200





[illegible]