



**SUPERIOR**  
Black Lick, Pa.  
Mercer, Pa.  
Wooster, Oh.  
Cleveland, Ok.  
Trinidad, Co.

## CEMENT BOND LOG

Company XTO Energy Inc.  
Well Apache Canyon 31-14  
Field Purgatorie River  
County Las Animas  
State CO

Company XTO Energy Inc.

Well Apache Canyon 31-14

Field Purgatorie River

County Las Animas State CO

Location: API #: 05 071 09277 00

496' FSL & 1575' FWL

SEC 31 TWP 33S RGE 67W

Other Services  
Pressure  
control

Permanent Datum Ground Level Elevation 8208'  
Log Measured From Ground Level  
Drilling Measured From Ground Level

Elevation  
K.B. -----  
D.F. -----  
G.L. 8208'

Date	7-2-07				
Run Number	One				
Depth Driller	2700'				
Depth Logger	2611'				
Bottom Logged Interval	2608'				
Top Log Interval	Surface				
Open Hole Size	7 7/8				
Type Fluid	Water				
Density / Viscosity	///				
Max. Recorded Temp.	120F				
Estimated Cement Top	234'				
Time Well Ready	ROA				
Time Logger on Bottom	5:00PM				
Equipment Number	T0698				
Location	Trinidad				
Recorded By	J. Sisneros				
Witnessed By	Mr. Mike Polley				
Borehole Record					
Run Number	Bit	From	To	Size	Weight
					</

<<< Fold Here >>>

All interpretations are opinions based on inferences from electrical or other measurements and we cannot and do not guarantee the accuracy or correctness of any interpretation, and we shall not, except in the case of gross or willful negligence on our part, be liable or responsible for any loss, costs, damages, or expenses incurred or sustained by anyone resulting from any interpretation made by any of our officers, agents or employees. These interpretations are also subject to our general terms and conditions set out in our current Price Schedule.

### Comments

Lower Bosque Entrance, first right to Cherry Canyon, stay left at Y, stay on main road for 5.5 miles turn right , first location.



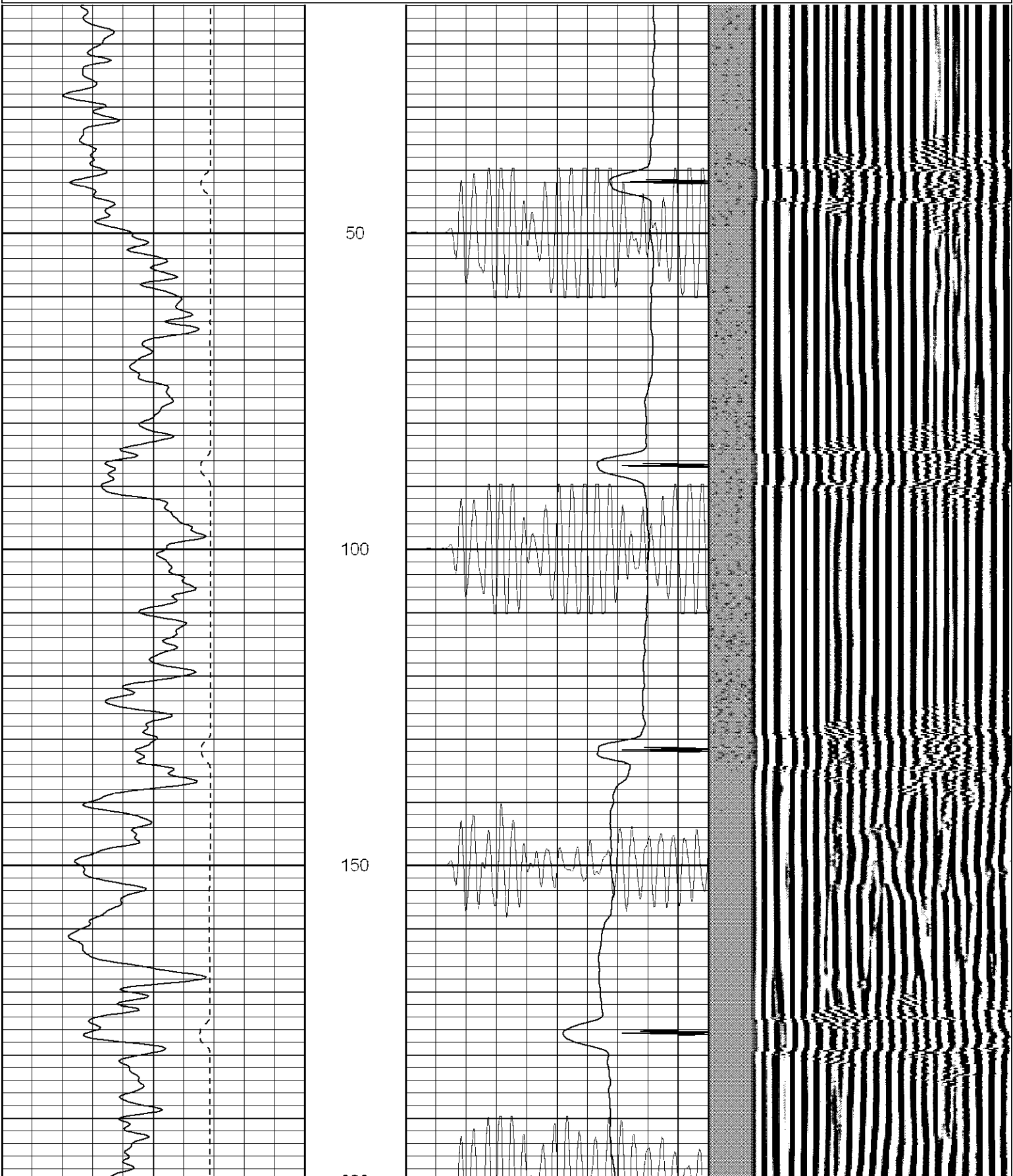
**SUPERIOR**

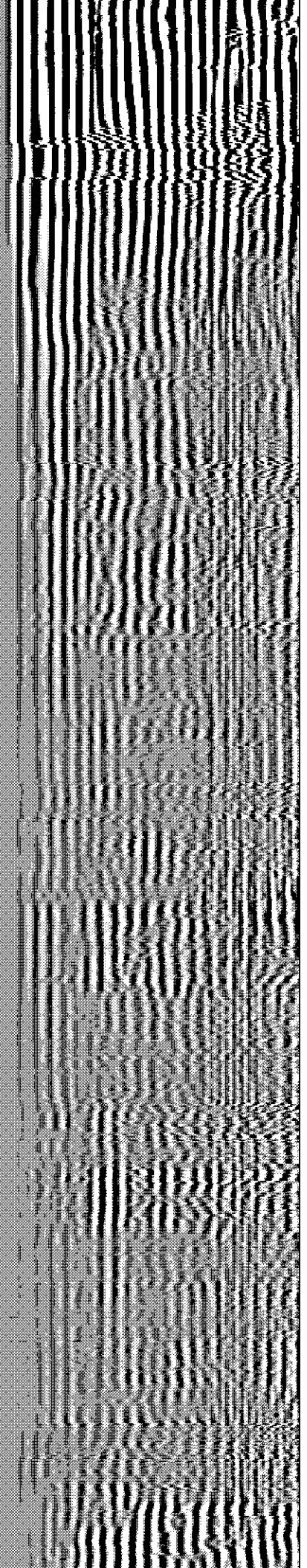
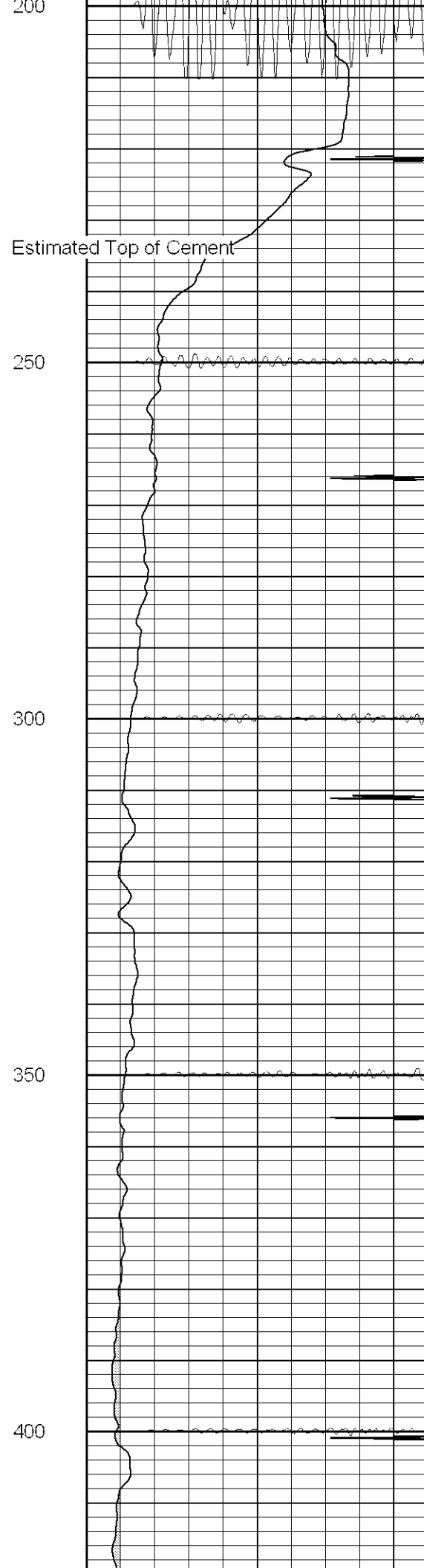
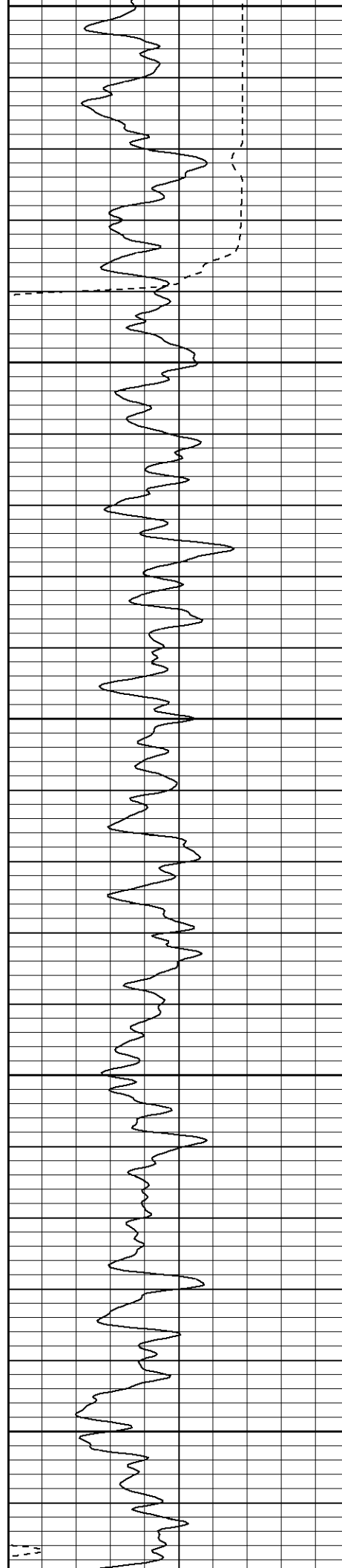
Black Lick, Pa.  
Mercer, Pa.  
Wooster, Oh.  
Cleveland, Ok.  
Trinidad, Co.

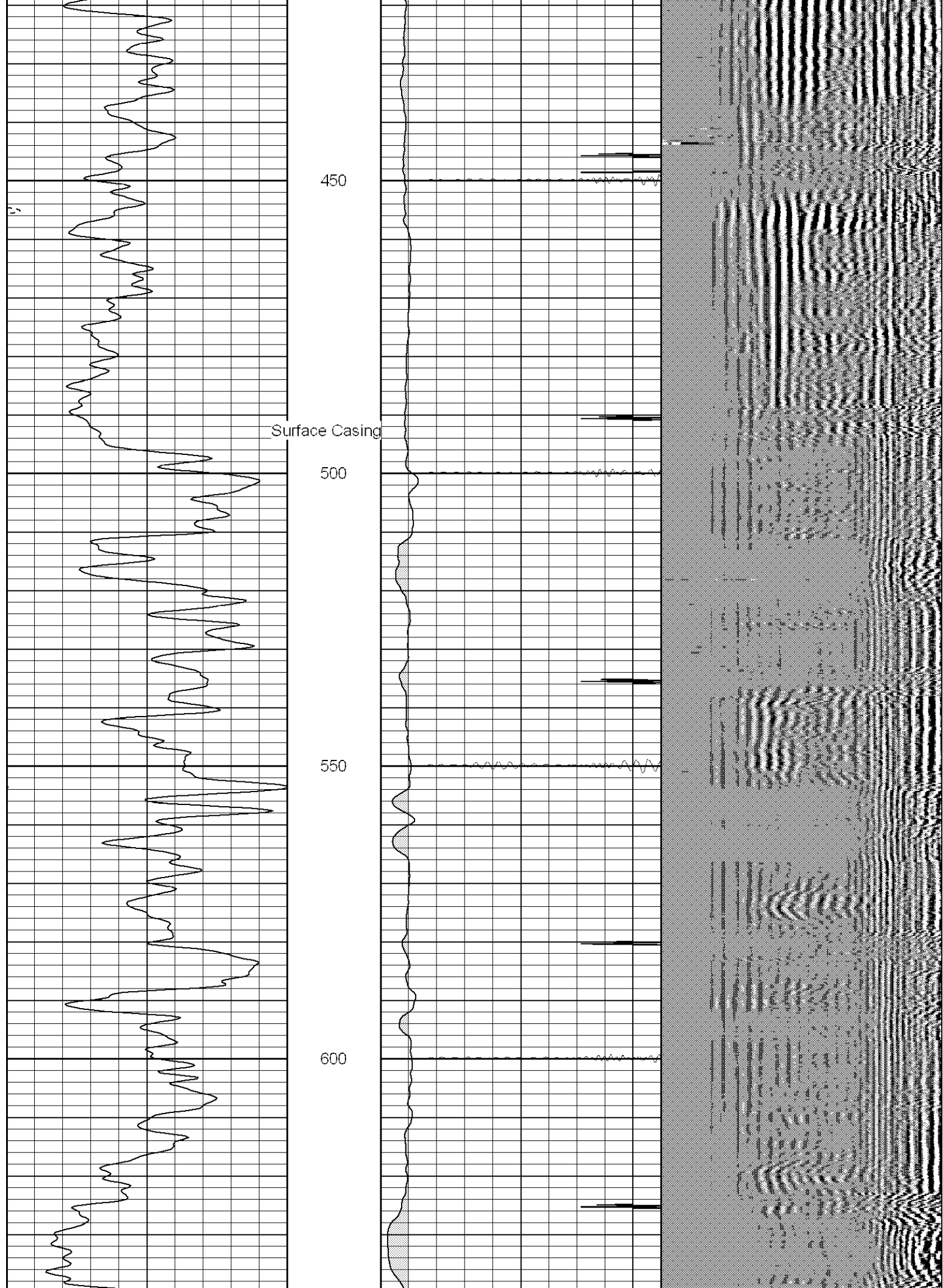
# Main Pass (1000PSI)

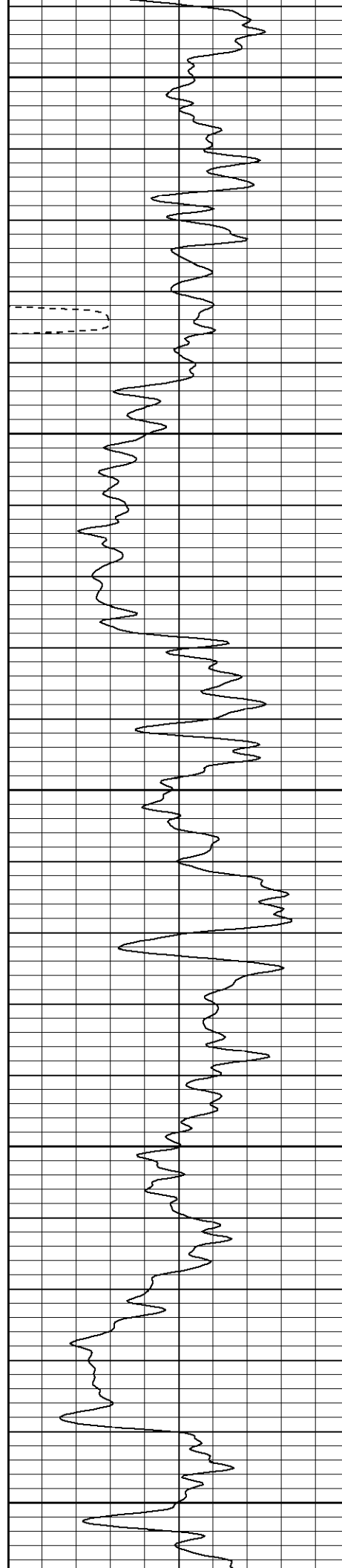
Database File: ac31147207b.db  
Dataset Pathname: pass2  
Presentation Format: cblrt  
Dataset Creation: Mon Jul 02 18:02:13 2007 by Log Open-Cased 061129  
Charted by: Depth in Feet scaled 1:240

0	GR (GAPI)	200	0	AMP3 (mV)	100	200	Variable Density	1200
400	TT3 (usec)	200	18	CCL	-2			
-----			200	CBL5	1200			









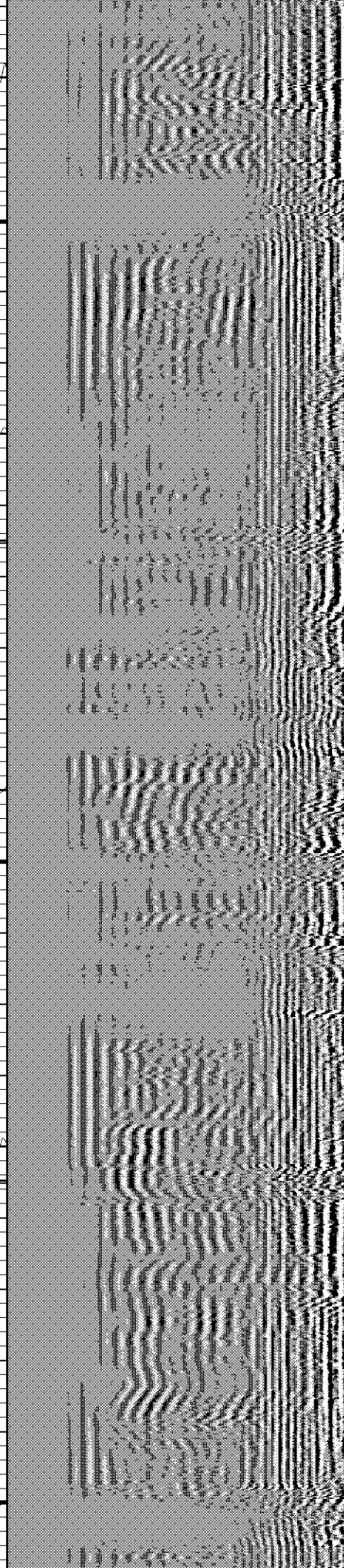
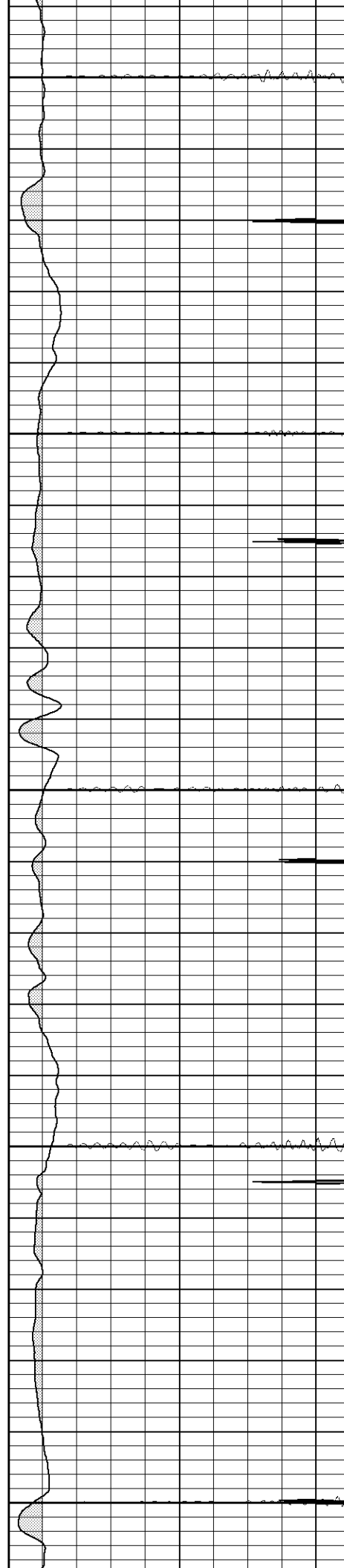
650

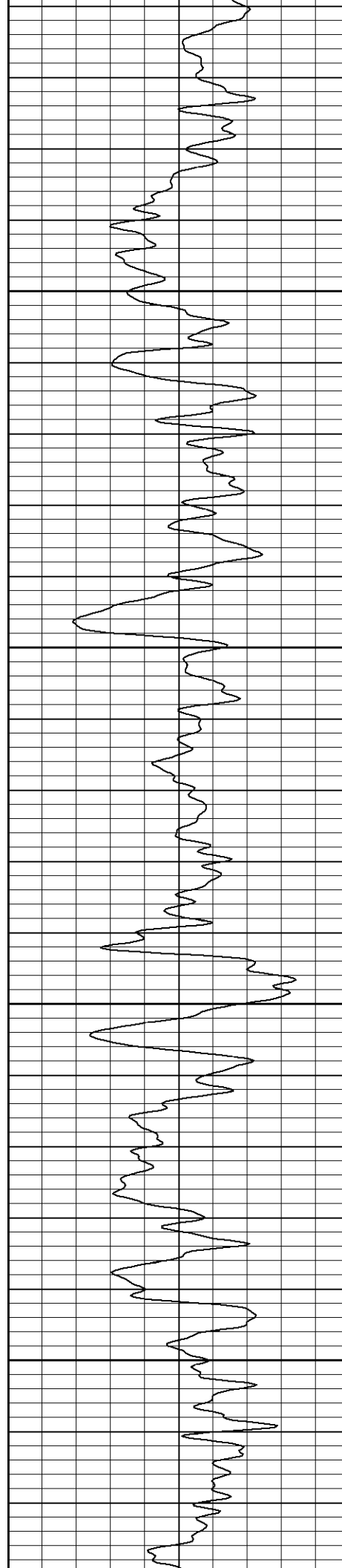
700

750

800

850



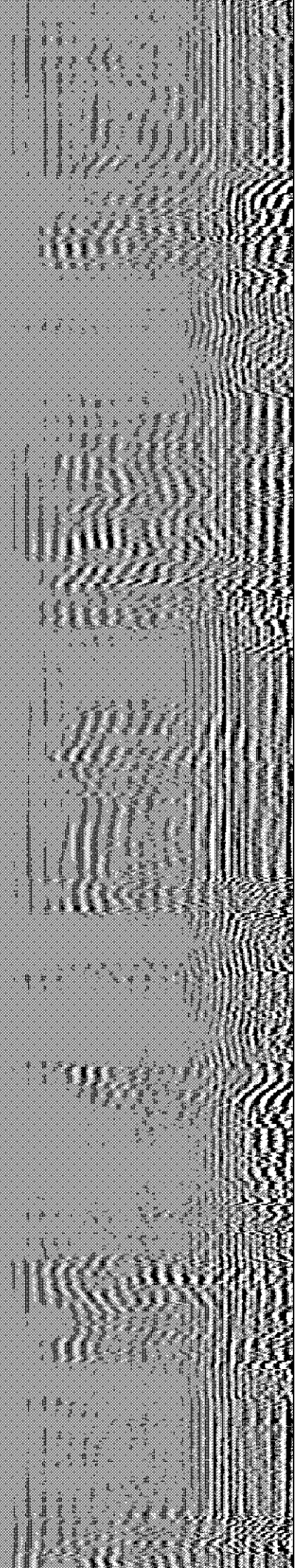
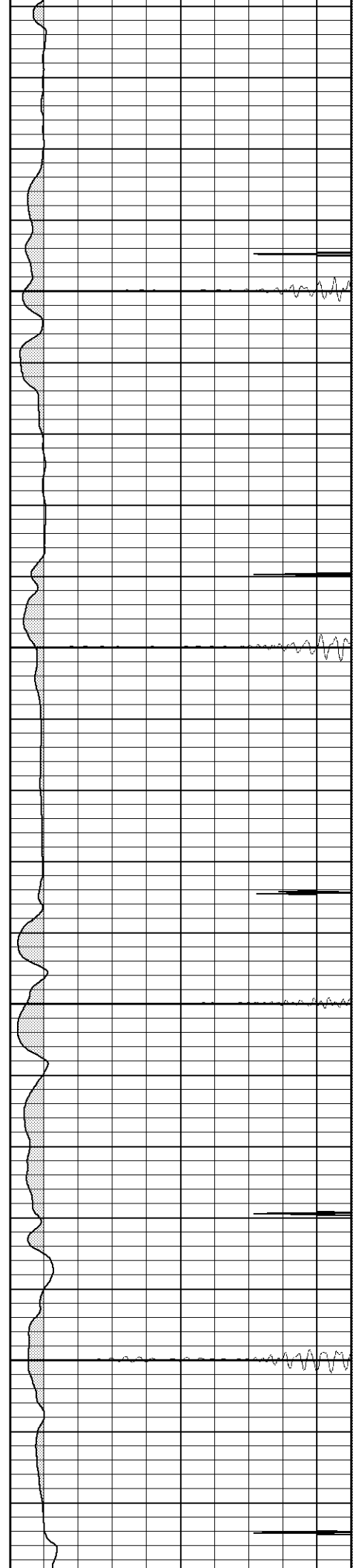


900

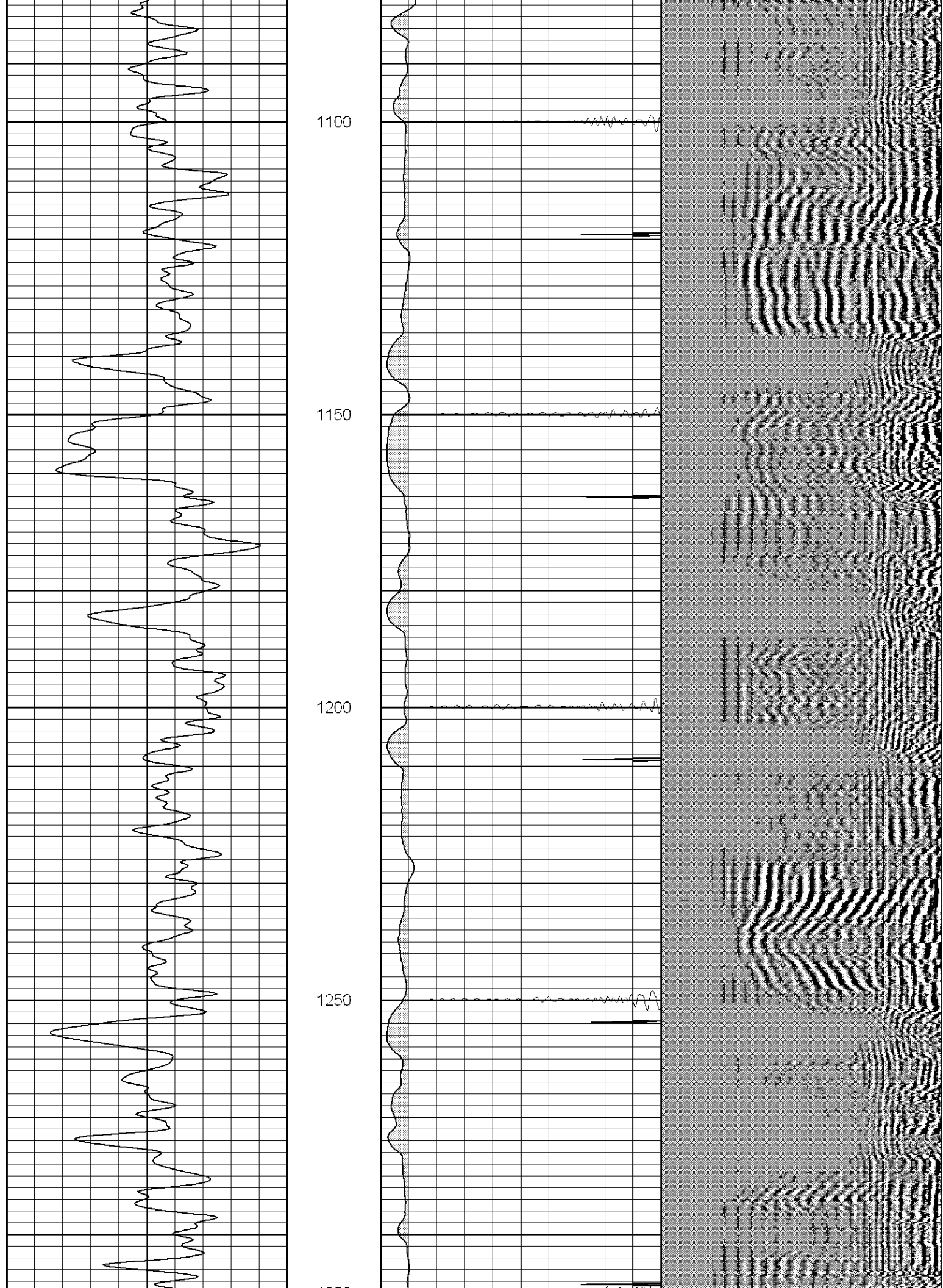
950

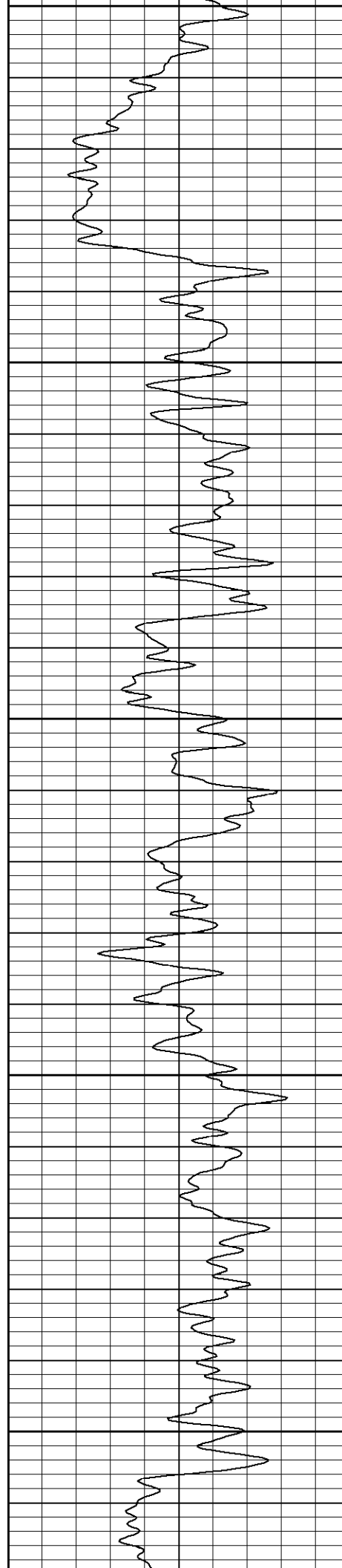
1000

1050









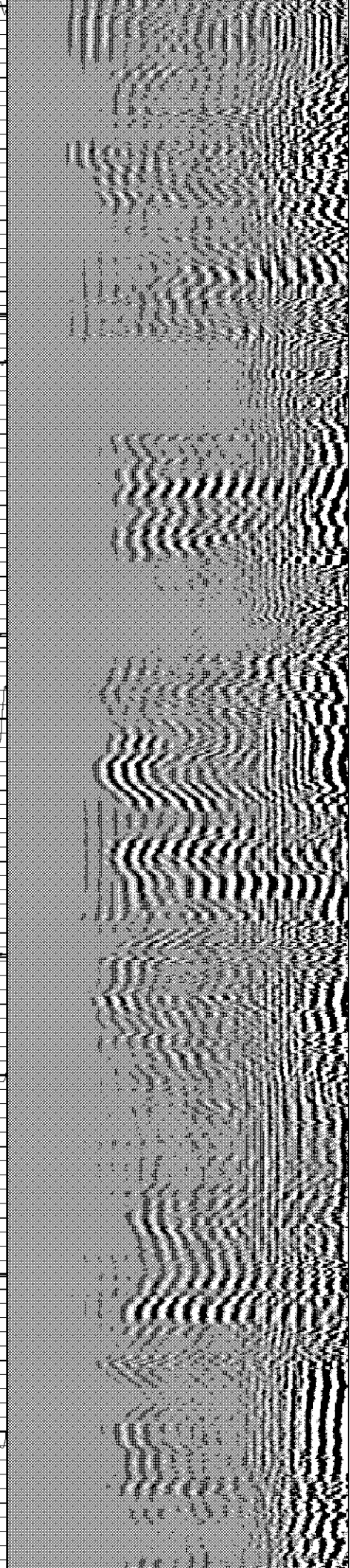
1300

1350

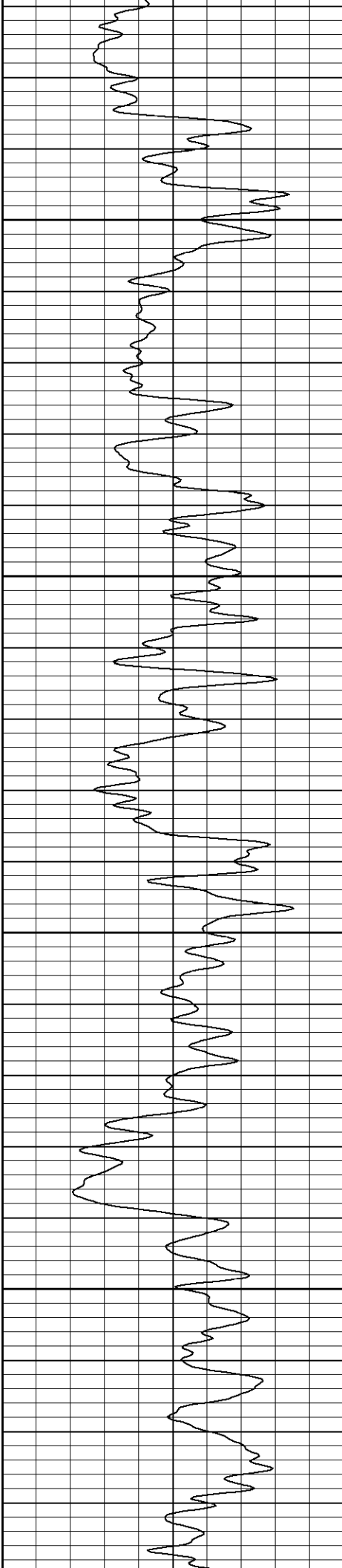
1400

1450

1500





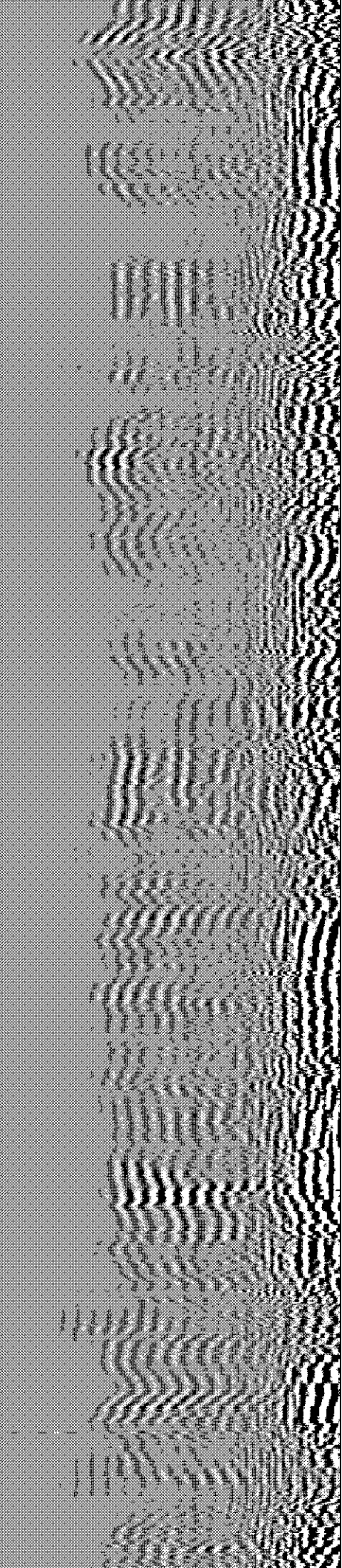
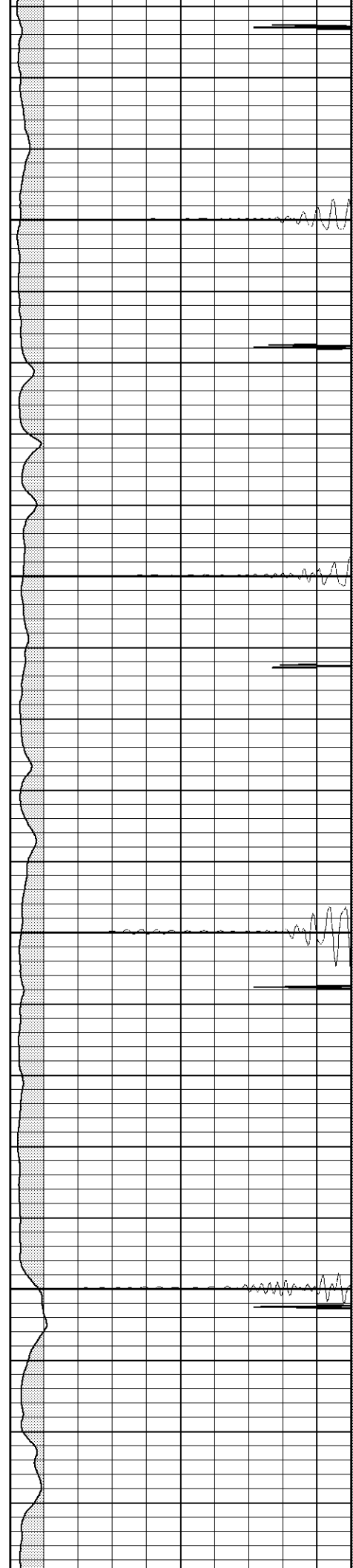


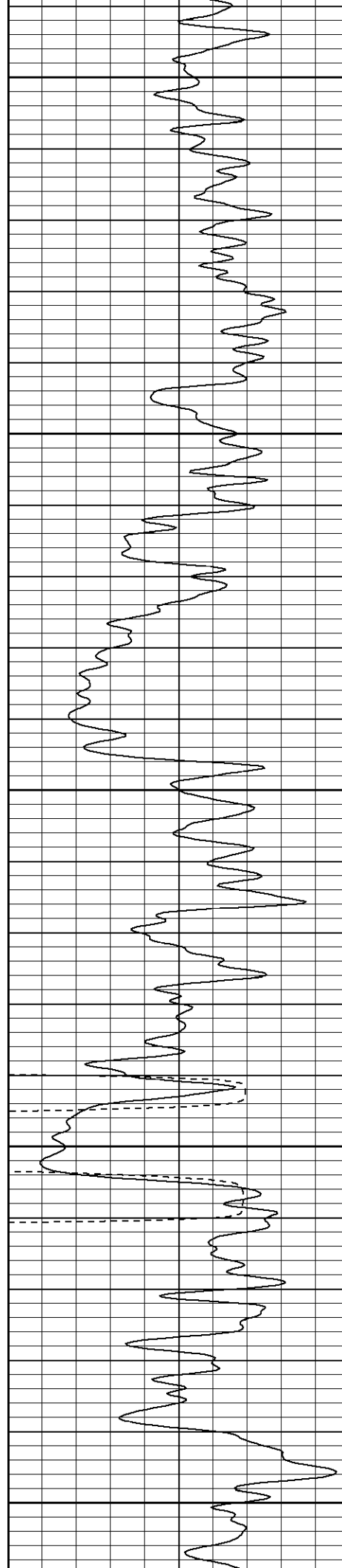
1550

1600

1650

1700





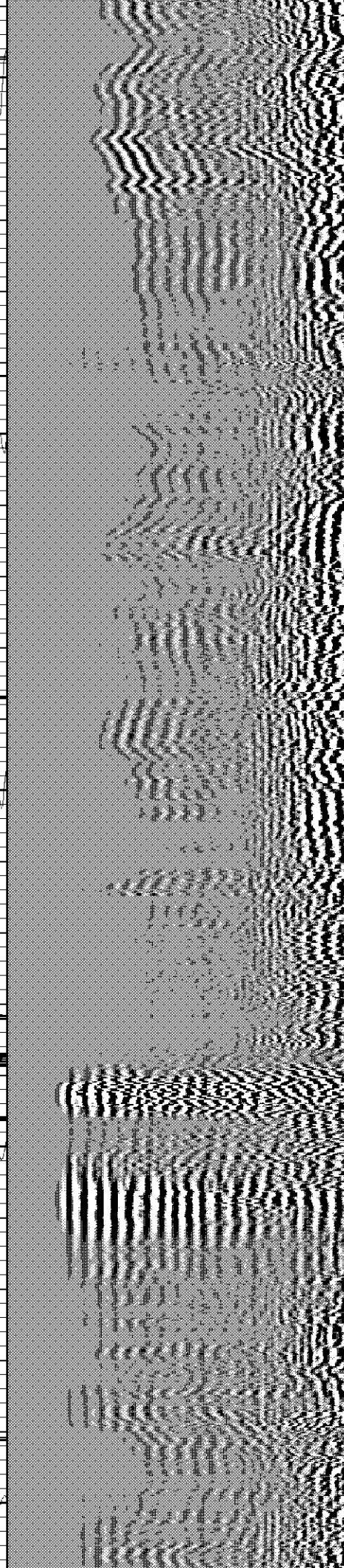
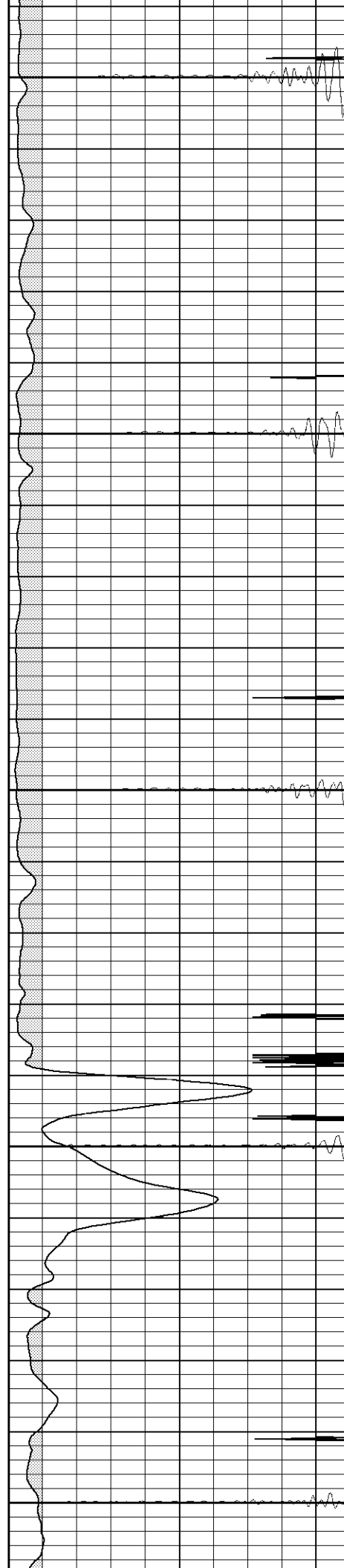
1750

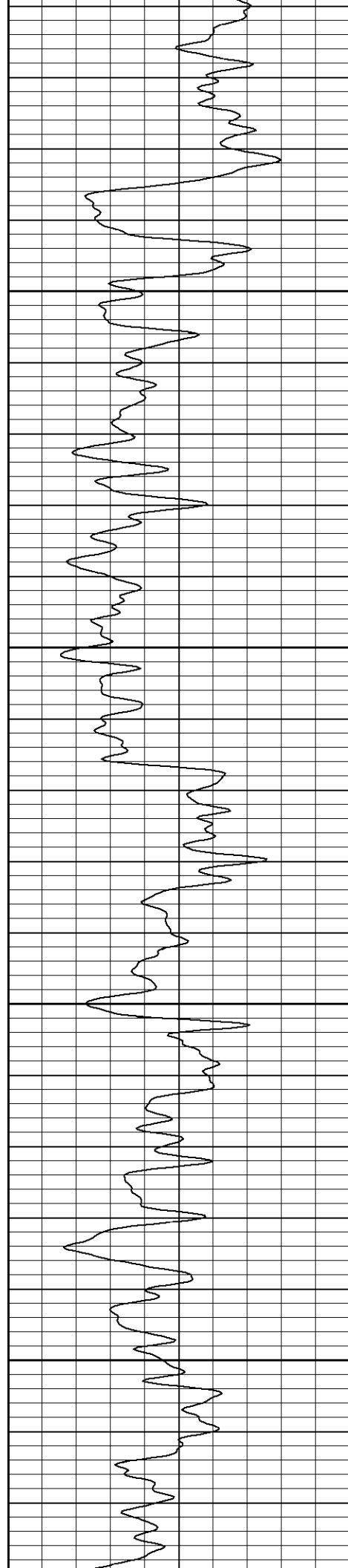
1800

1850

1900

1950



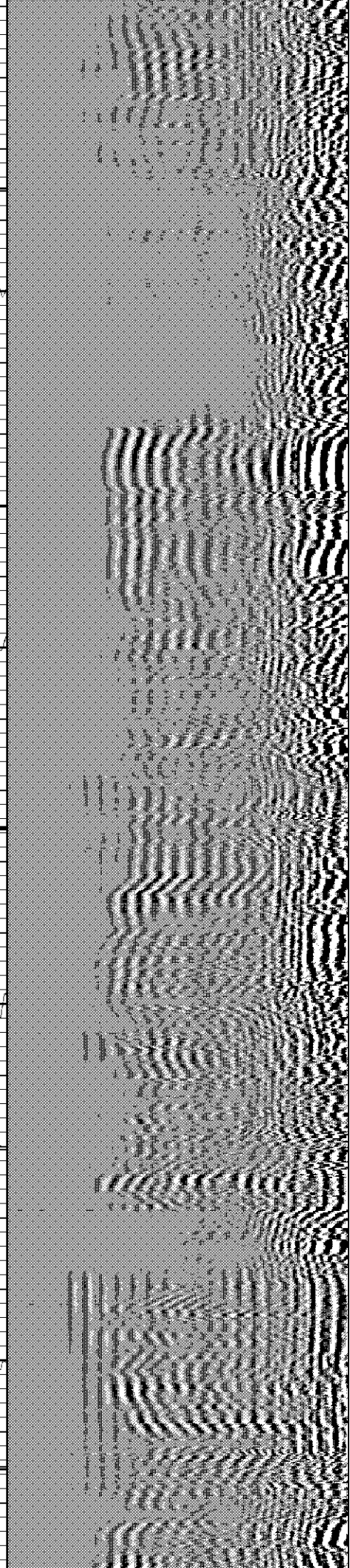
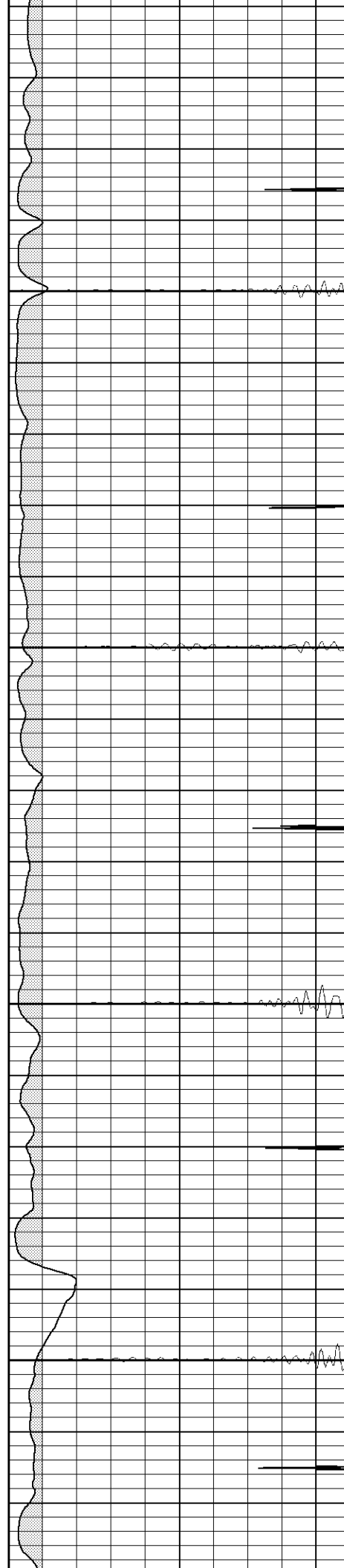


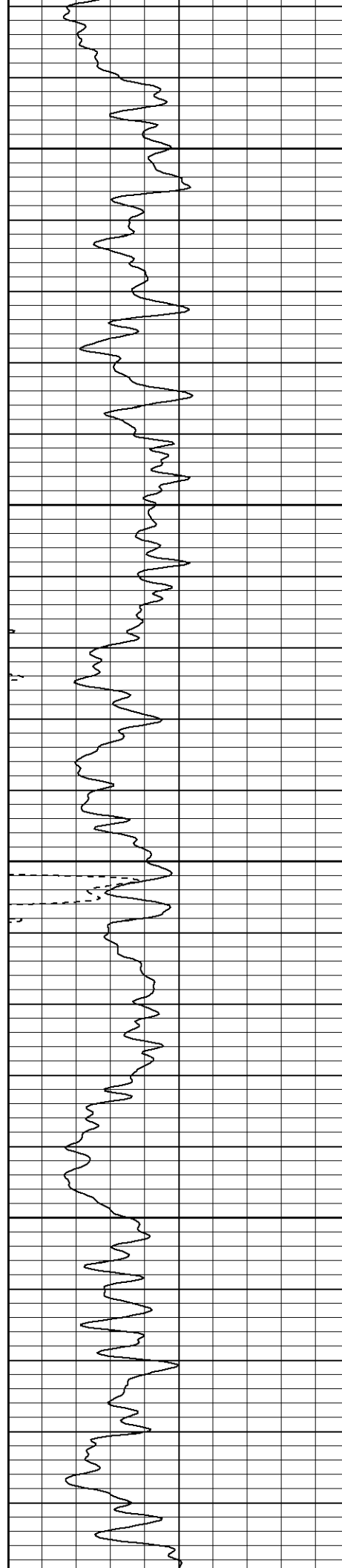
2000

2050

2100

2150



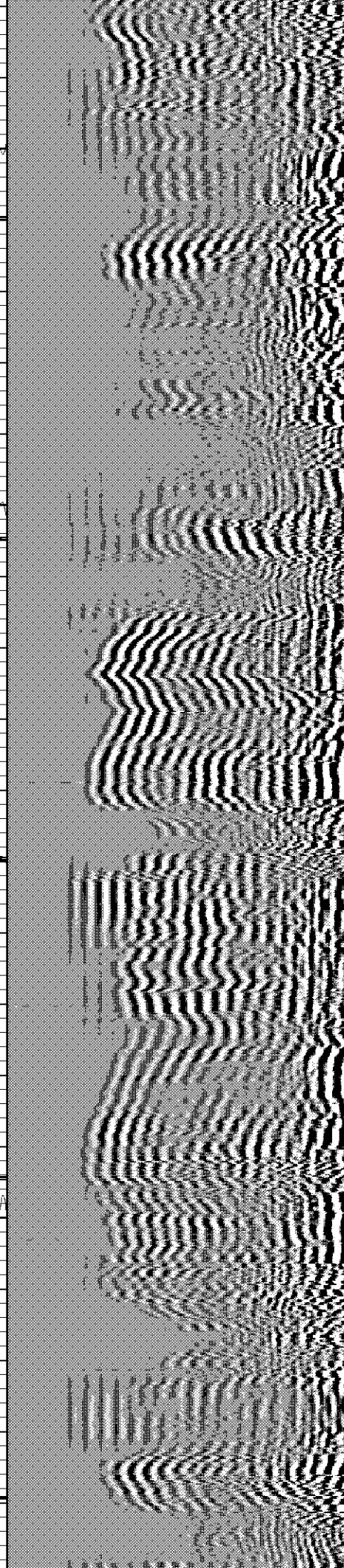
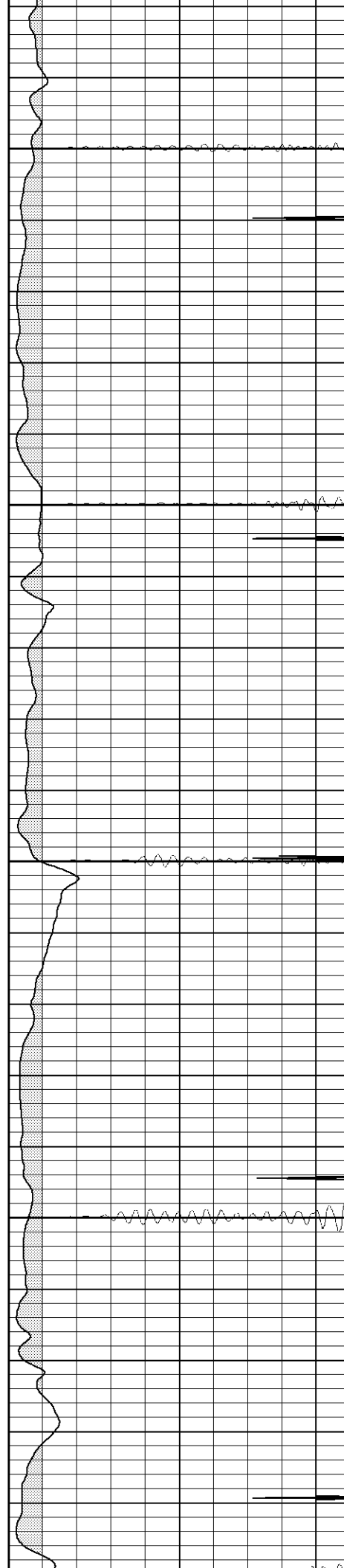


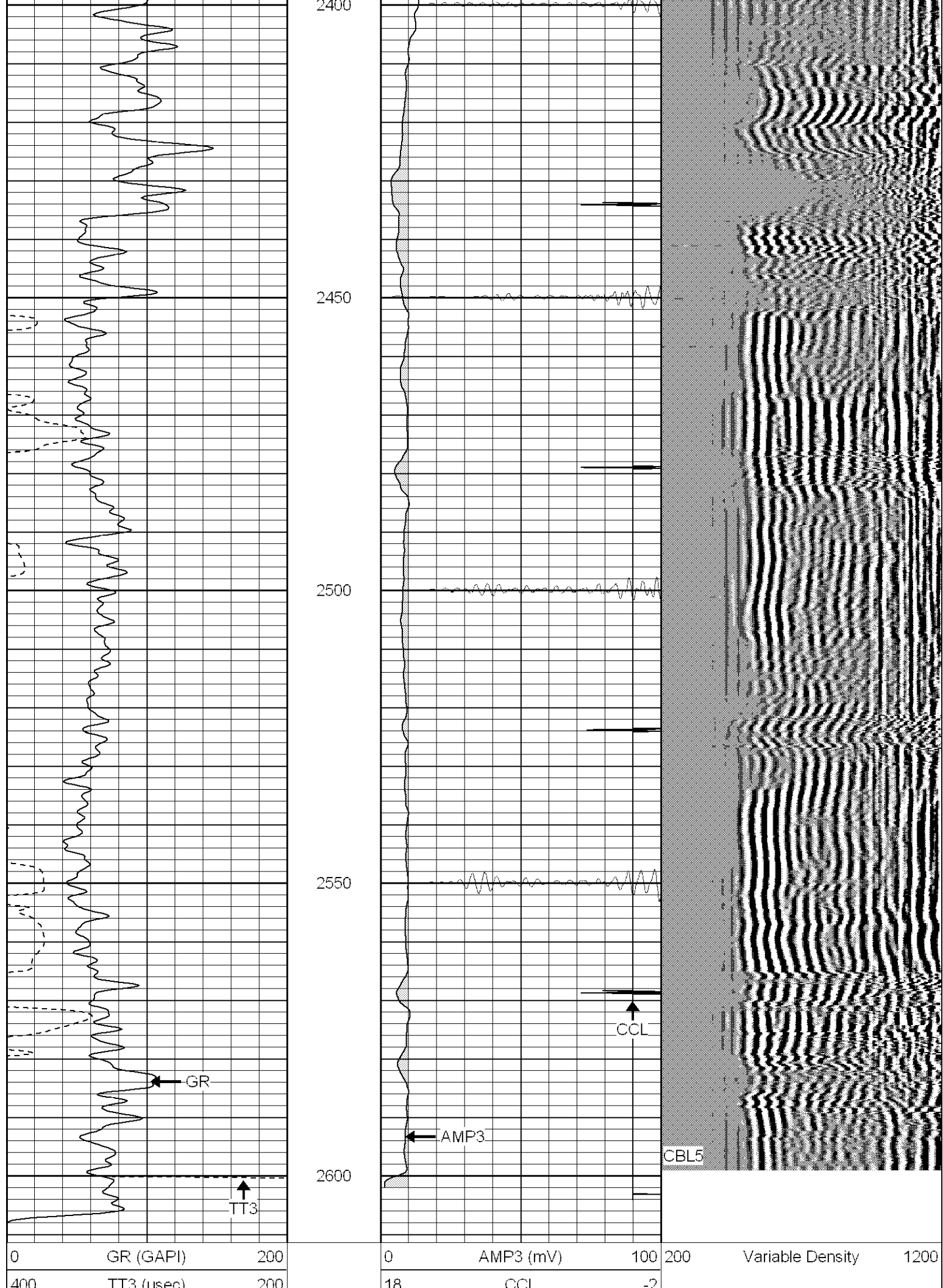
2200

2250

2300

2350







100	TT3 (usec)	200
-----	------------	-----

100	CCL	200
200	CBL5	1200



**SUPERIOR**

Black Lick, Pa.  
 Mercer, Pa.  
 Wooster, Oh.  
 Cleveland, Ok.  
 Trinidad, Co.

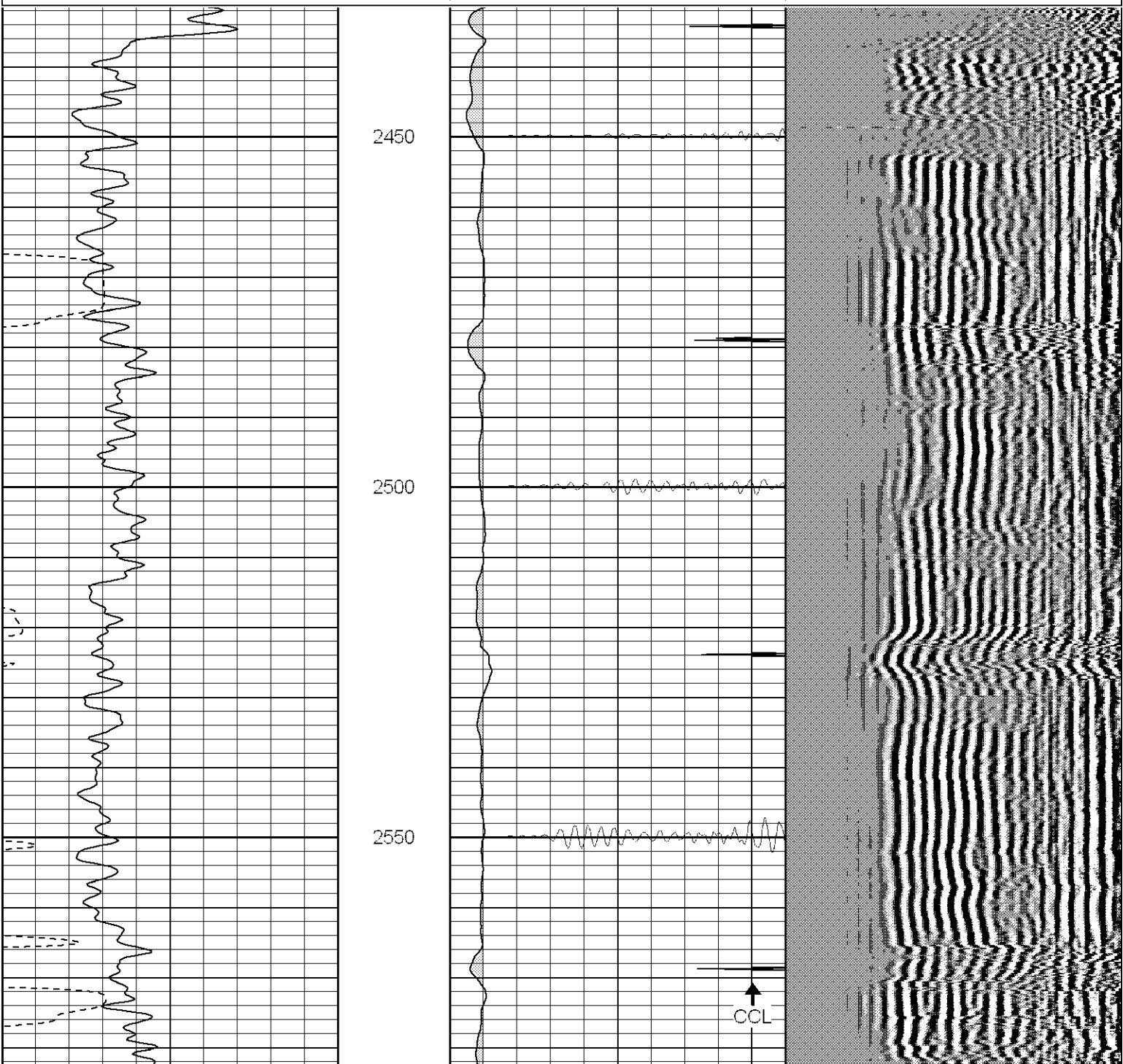
# Repeat Section (0PSI)

Database File: ac31147207b.db  
 Dataset Pathname: pass1  
 Presentation Format: cblrt  
 Dataset Creation: Mon Jul 02 17:55:43 2007 by Log Open-Cased 061129  
 Charted by: Depth in Feet scaled 1:240

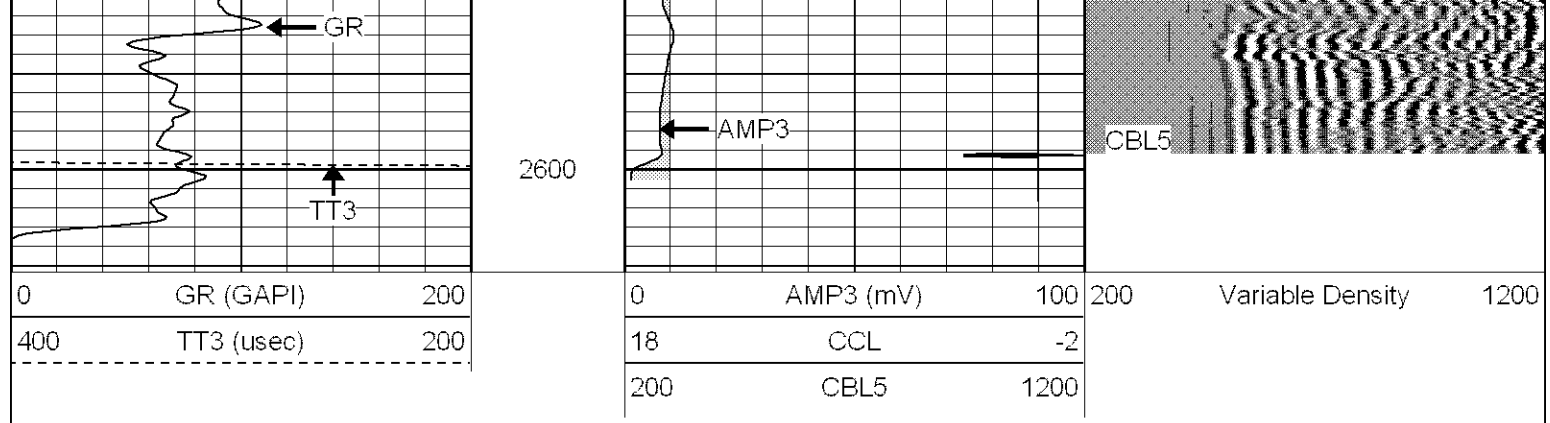
0	GR (GAPI)	200
400	TT3 (usec)	200
-----		

0	AMP3 (mV)	100
18	CCL	-2
200	CBL5	1200

200 Variable Density 1200







Calibration Report			
Database File:	ac31147207b.db		
Dataset Pathname:	pass1		
Dataset Creation:	Mon Jul 02 17:55:43 2007 by Log Open-Cased 061129		
Gamma Ray Calibration Report			
Serial Number:	Titan1		
Tool Model:	T1		
Performed:	Wed Jun 20 16:43:46 2007		
Calibrator Value:	200.0	GAPI	
Background Reading:	54.0	cps	
Calibrator Reading:	219.0	cps	
Sensitivity:	1.5000	GAPI/cps	
Cement Bond Log Calibration Report			
Serial Number:	Titan4		
Tool Model:	T4		
Performed:	Tue Jun 26 11:32:40 2007		
Depth:	74.8132	ft	
Casing Diameter:	5.5	in	
	3' Spacing	5' Spacing	
Signal Zero:	0	0	mV
Calibrated Amplitude:	85	71.921	mV
Reading at Signal Zero:	0.0239014	0.020166	V
Reading in Free Pipe:	1.73	1.63755	V
Gain:	49.8213	44.4675	
Offset:	1.5	-0.896733	

Sensor	Offset (ft)	Schematic	Description	Len (ft)	OD (in)	Wt (lb)
			CHD-None (0)	0.75	1.50	5.00
			CENT-X (2)	3.00	1.69	25.00
WVF5	12.30		CBL-T4 (Titan4)	8.15	2.25	110.00
WVF3	11.30					
CCL	7.10		CCL-T1 (Titan1)	1.33	3.13	15.00

