



SUPERIOR
Black Lick, Pa.
Mercer, Pa.
Wooster, Oh.
Cleveland, Ok.
Trinidad, Co.

CEMENT BOND LOG

Company XTO Energy Inc.
Well Hill Ranch 16-09 VX
Field Purgatorie River
County Las Animas
State CO

Company XTO Energy Inc.
Well Hill Ranch 16-09 VX
Field Purgatorie River
County Las Animas State CO

Location: API #: 05 071 09207 00

3354' FNL & 511' FEL

SEC 16 TWP 35S RGE 67W

Permanent Datum Ground Level Elevation 7824'
Log Measured From Ground Level
Drilling Measured From Ground Level

Other Services
Pressure
control
Elevation
K.B. -----
D.F. -----
G.L. 7824'

| | | | | | |
|------------------------|---------|---------------|-----|--------|--------|
| Date | 4-27-07 | One | | | |
| Run Number | | 2335' | | | |
| Depth Driller | | 2257' | | | |
| Depth Logger | | 2255' | | | |
| Bottom Logged Interval | | Surface | | | |
| Top Log Interval | | 8 5/8" | | | |
| Open Hole Size | | Water | | | |
| Type Fluid | | /// | | | |
| Density / Viscosity | | /// | | | |
| Max. Recorded Temp. | | 104' | | | |
| Estimated Cement Top | | ROA | | | |
| Time Well Ready | | 12:30PM | | | |
| Time Logger on Bottom | | T0698 | | | |
| Equipment Number | | Trinidad | | | |
| Location | | J. Sisneros | | | |
| Recorded By | | Mr. Doug Wood | | | |
| Witnessed By | | | | | |
| Run Number | Bit | From | To | Size | Weight |
| | | | | | From |
| | | | | | To |
| Casing Record | Size | Wgt/Ft | Top | Bottom | |
| Surface String | 8 5/8" | | | 483' | |
| Prot. String | | | | | |
| Production String | 5.5" | | | | |
| Liner | | | | | |

<<< Fold Here >>>

All interpretations are opinions based on inferences from electrical or other measurements and we cannot and do not guarantee the accuracy or correctness of any interpretation, and we shall not, except in the case of gross or willful negligence on our part, be liable or responsible for any loss, costs, damages, or expenses incurred or sustained by anyone resulting from any interpretation made by any of our officers, agents or employees. These interpretations are also subject to our general terms and conditions set out in our current Price Schedule.

Comments

Lorencito to XTO, At white dumpster stay left, drive to Dead Horse, stay right go to bottom of hill, at Y stay left, first drive thru location, location on left side.



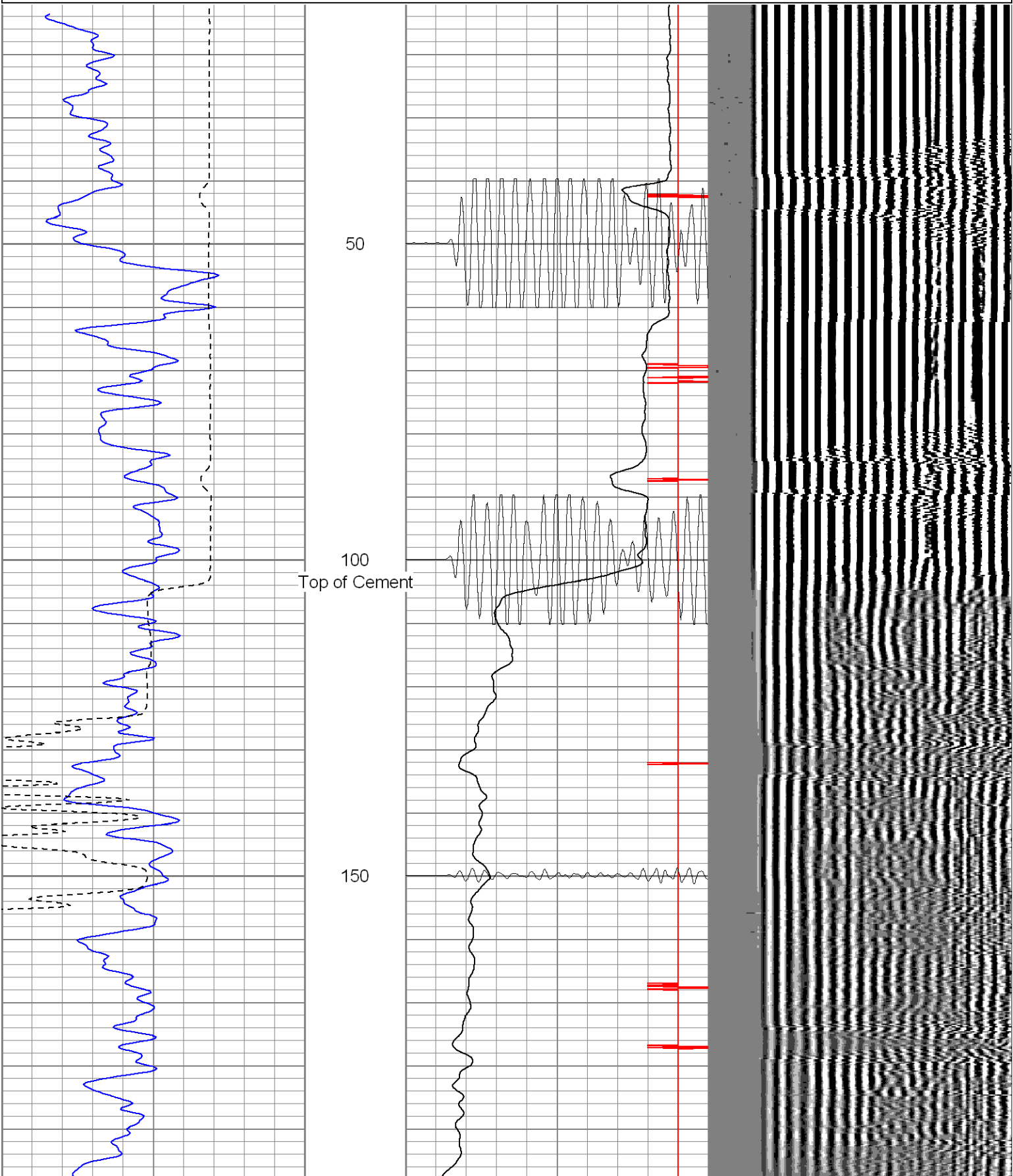
SUPERIOR

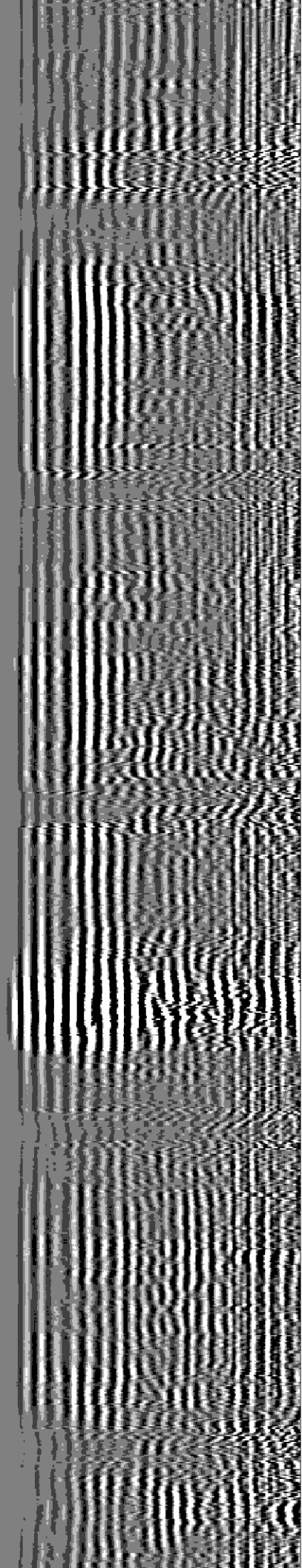
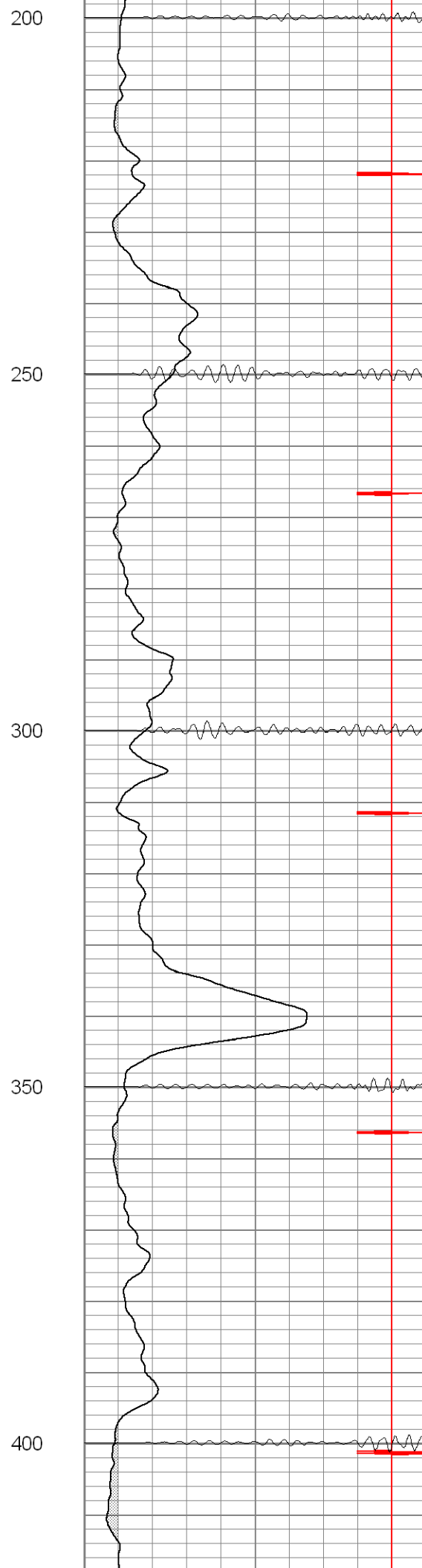
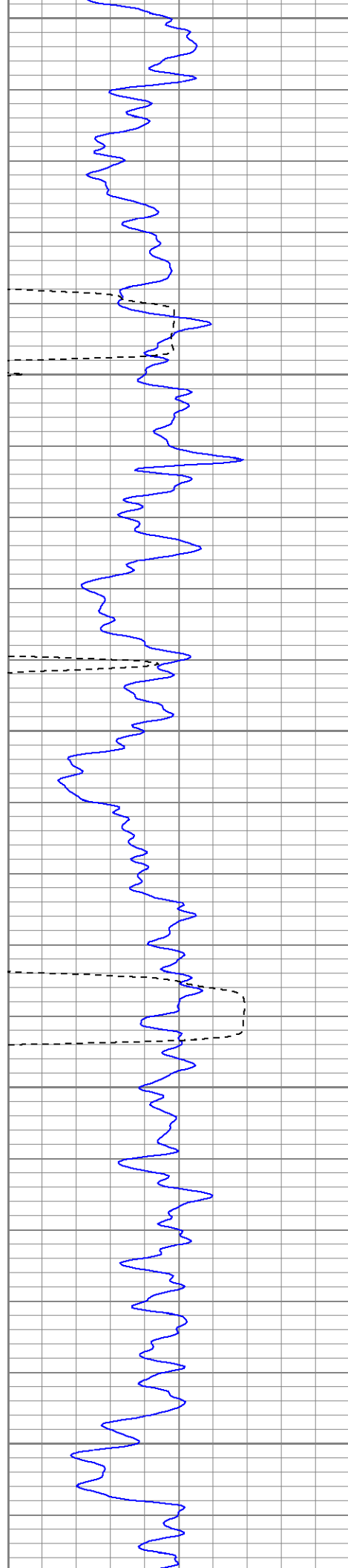
Black Lick, Pa.
Mercer, Pa.
Wooster, Oh.
Cleveland, Ok.
Trinidad, Co.

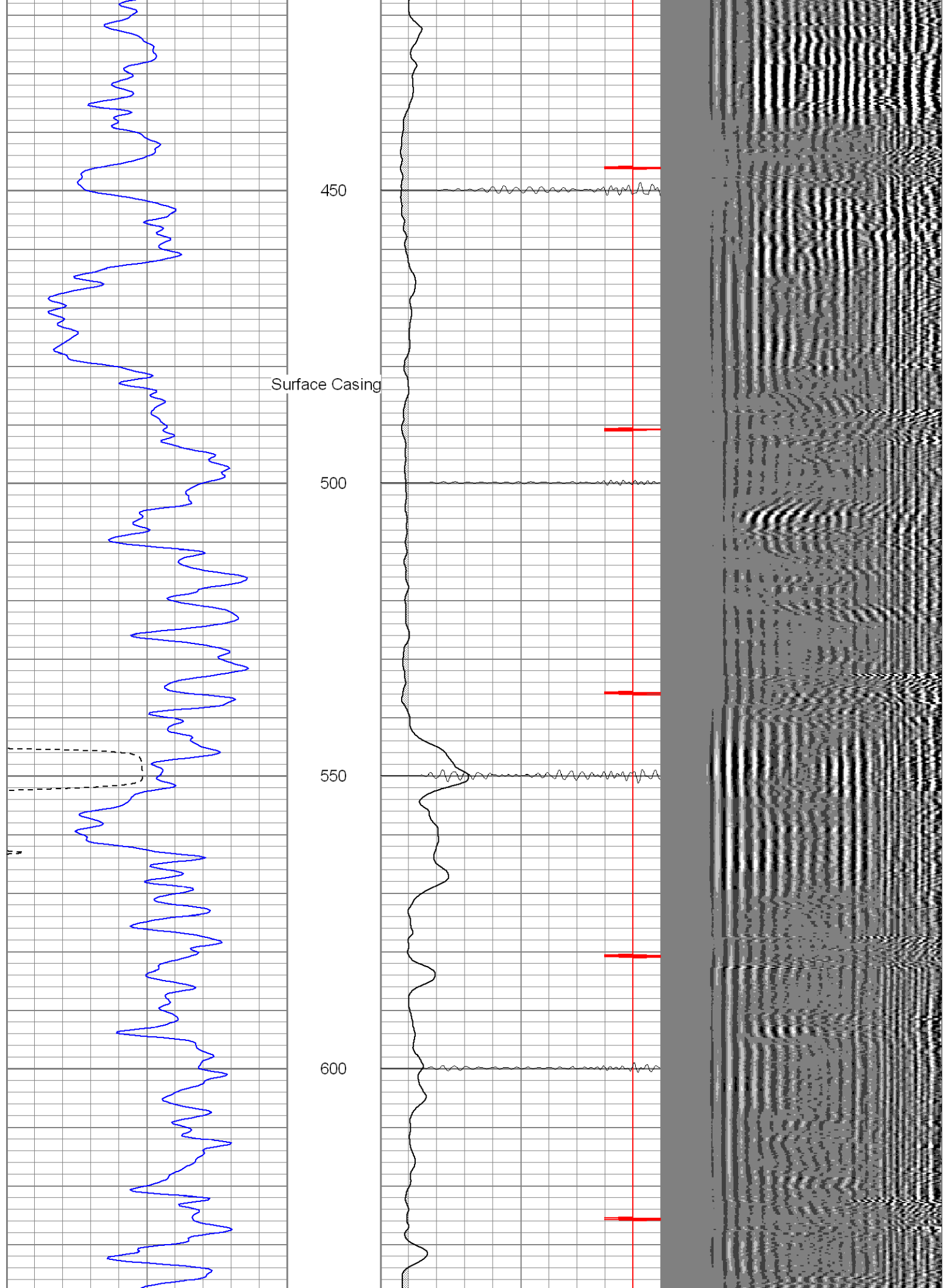
Main Pass (1000PSI)

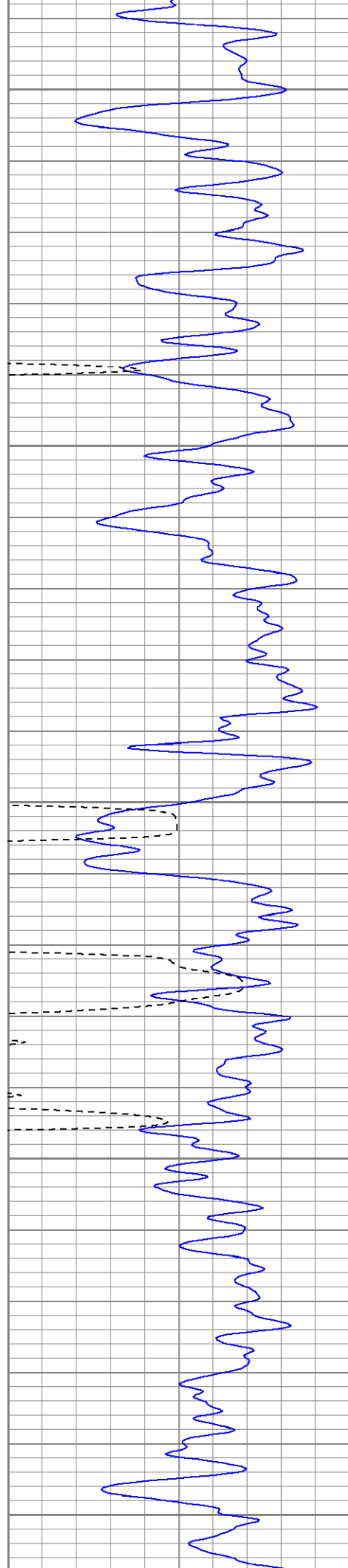
Database File: hr1609vx42707b.db
Dataset Pathname: pass2.2
Presentation Format: cblrt
Dataset Creation: Fri Apr 27 13:11:44 2007 by Calc Open-Cased 061129
Charted by: Depth in Feet scaled 1:240

| | | | | | | | | |
|-----|------------|-----|-----|-----------|------|-----|------------------|------|
| 0 | GR (GAPI) | 200 | 0 | AMP3 (mV) | 100 | 200 | Variable Density | 1200 |
| 400 | TT3 (usec) | 200 | 18 | CCL | -2 | | | |
| | | | 200 | CBL5 | 1200 | | | |









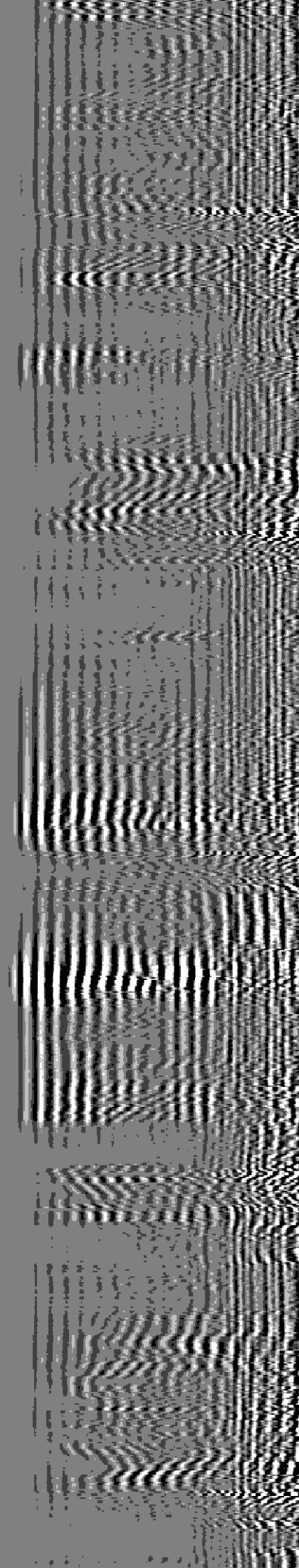
650

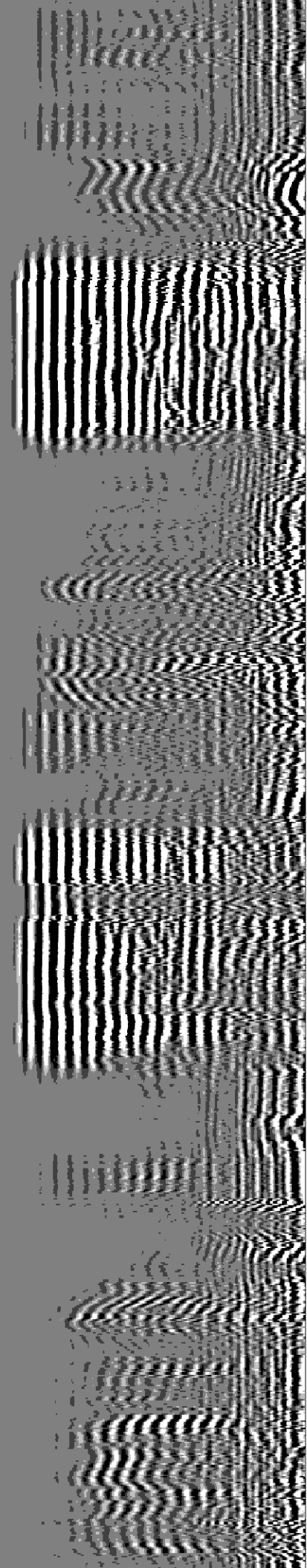
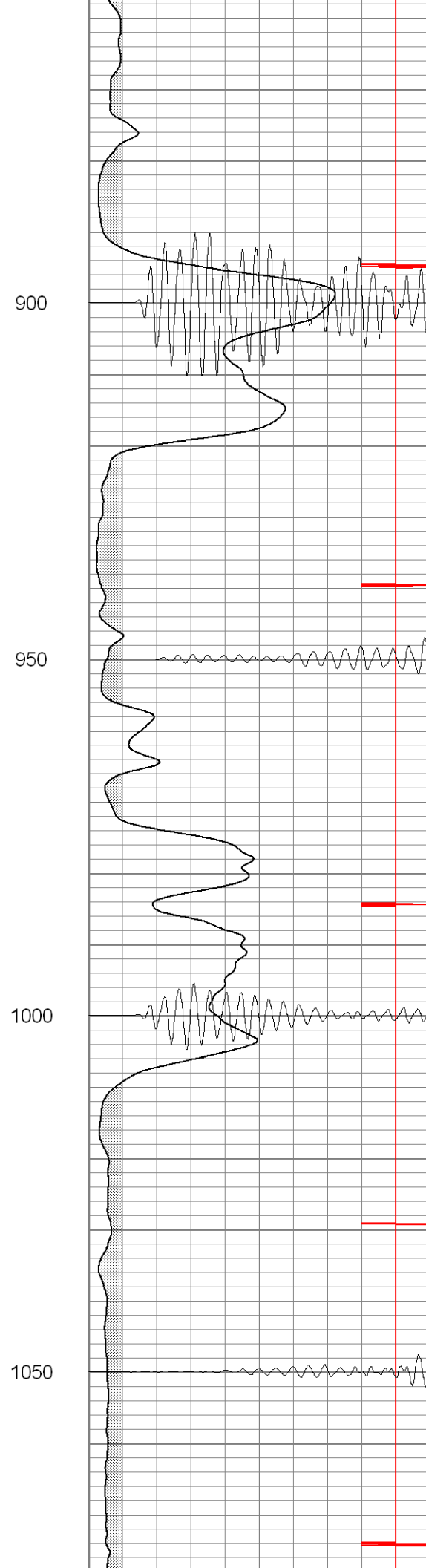
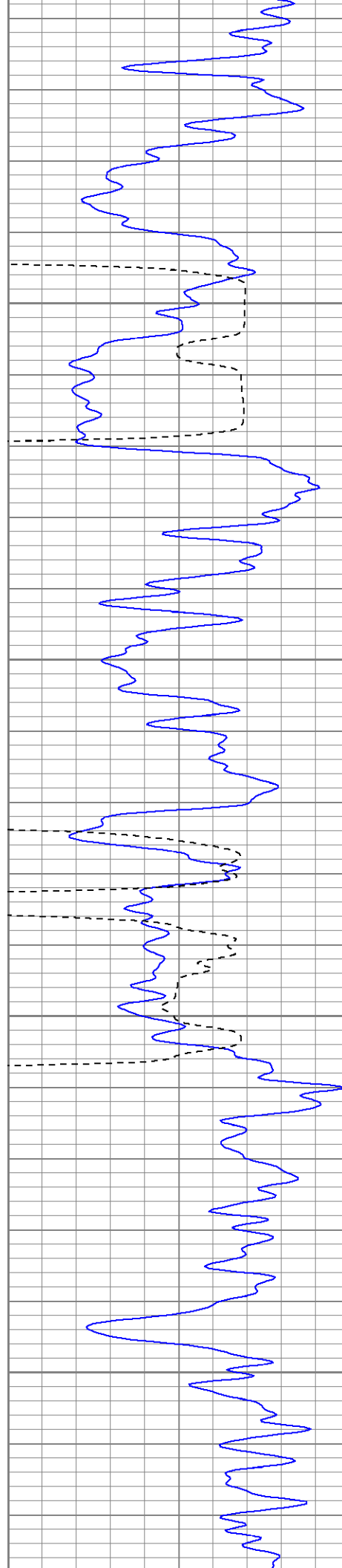
700

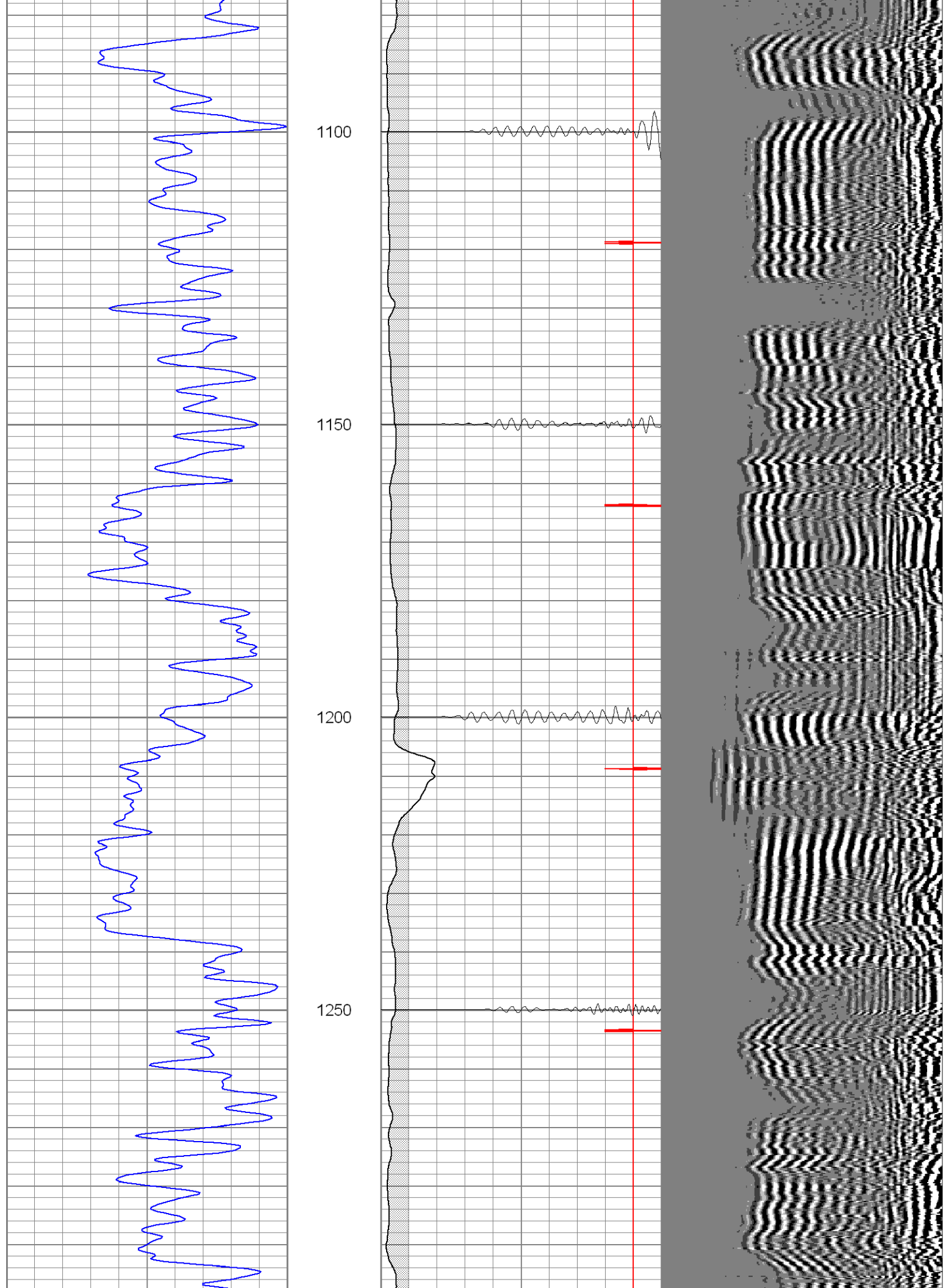
750

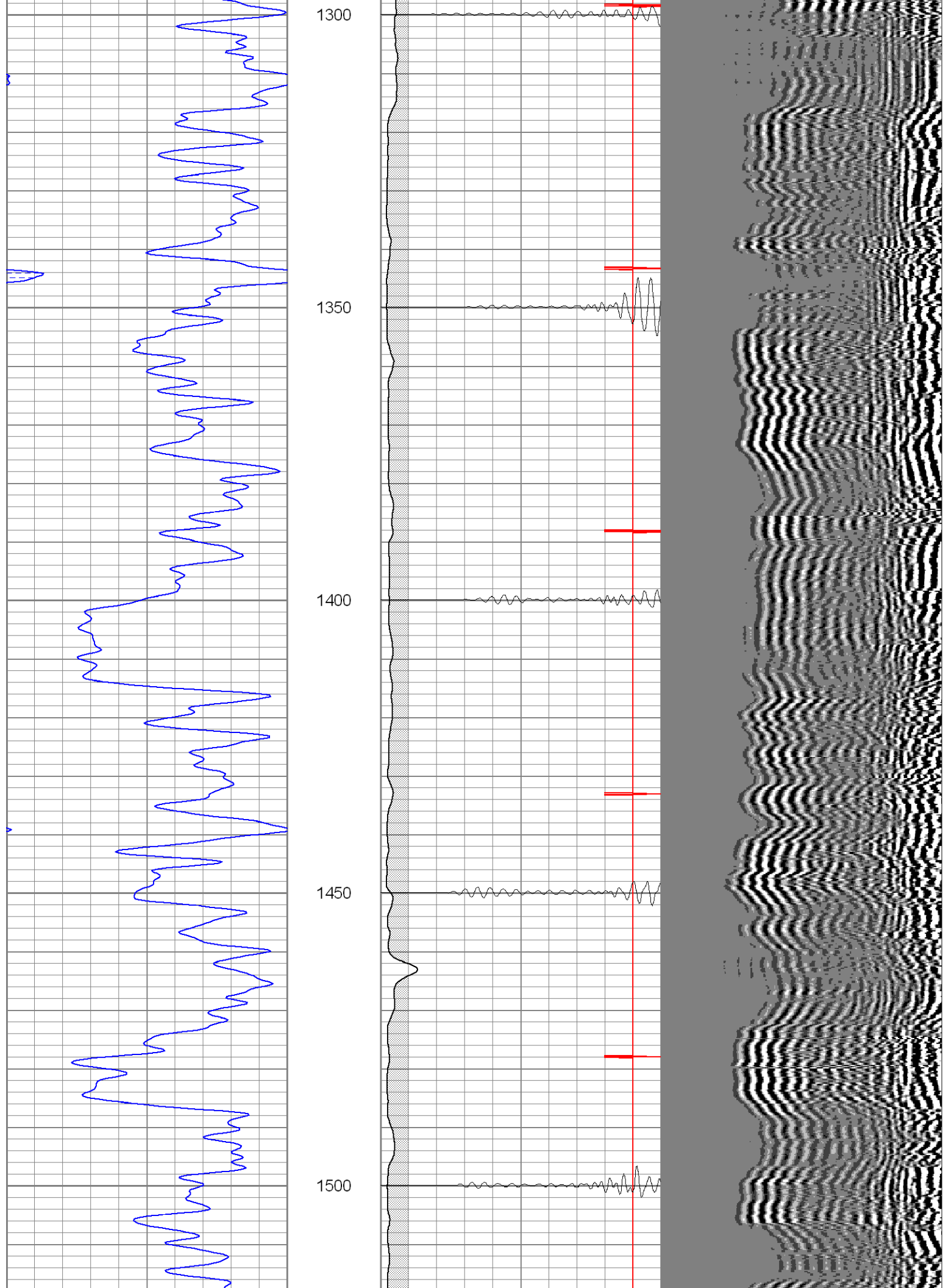
800

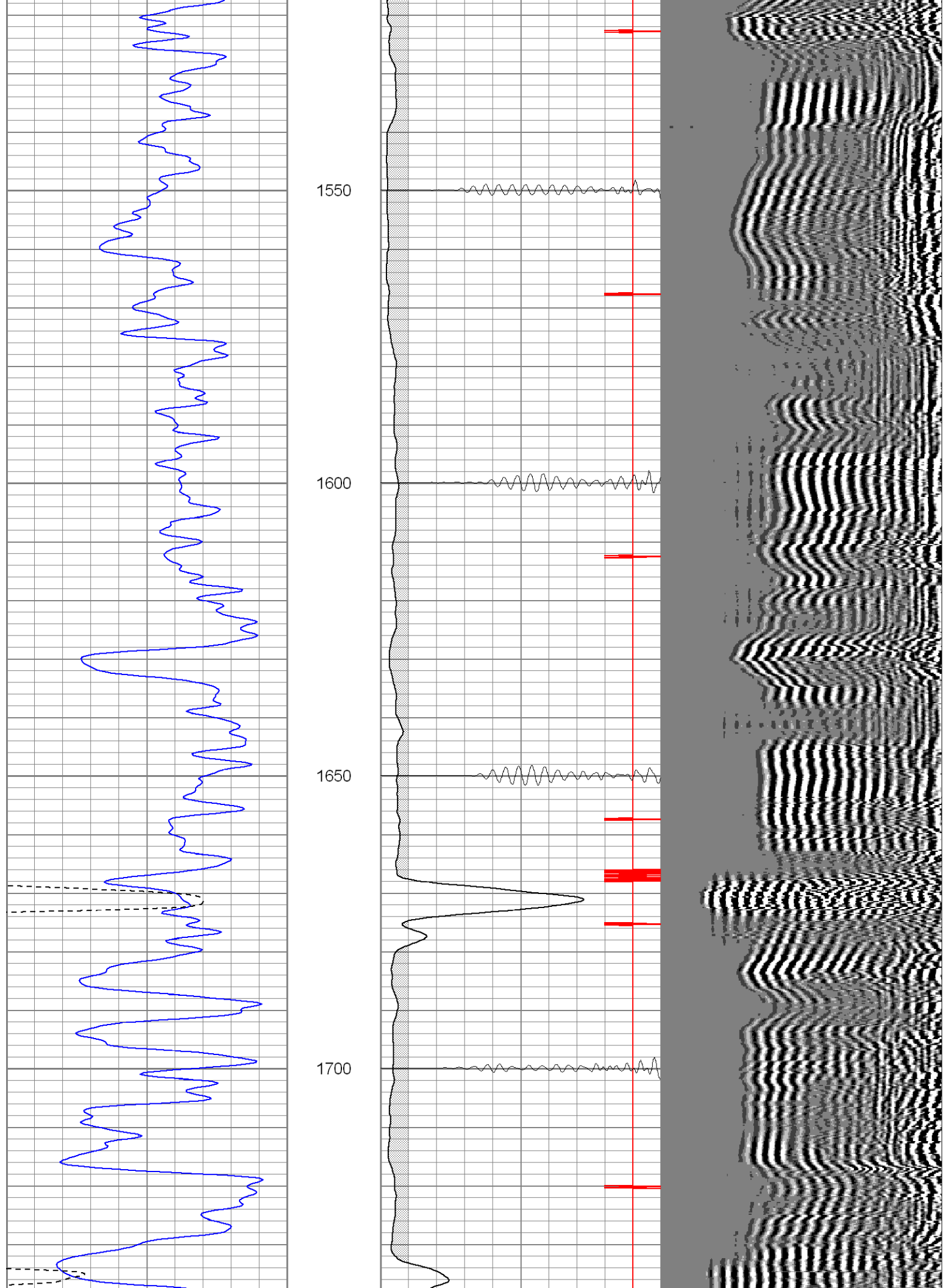
850

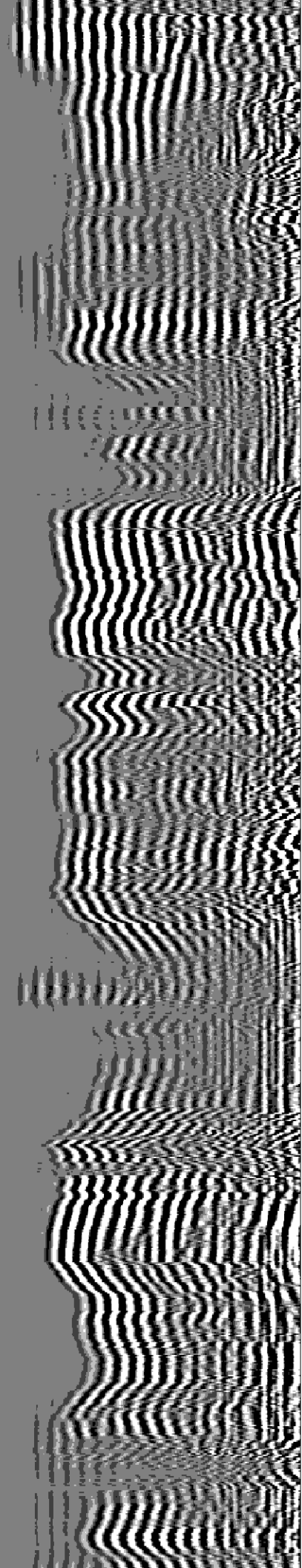
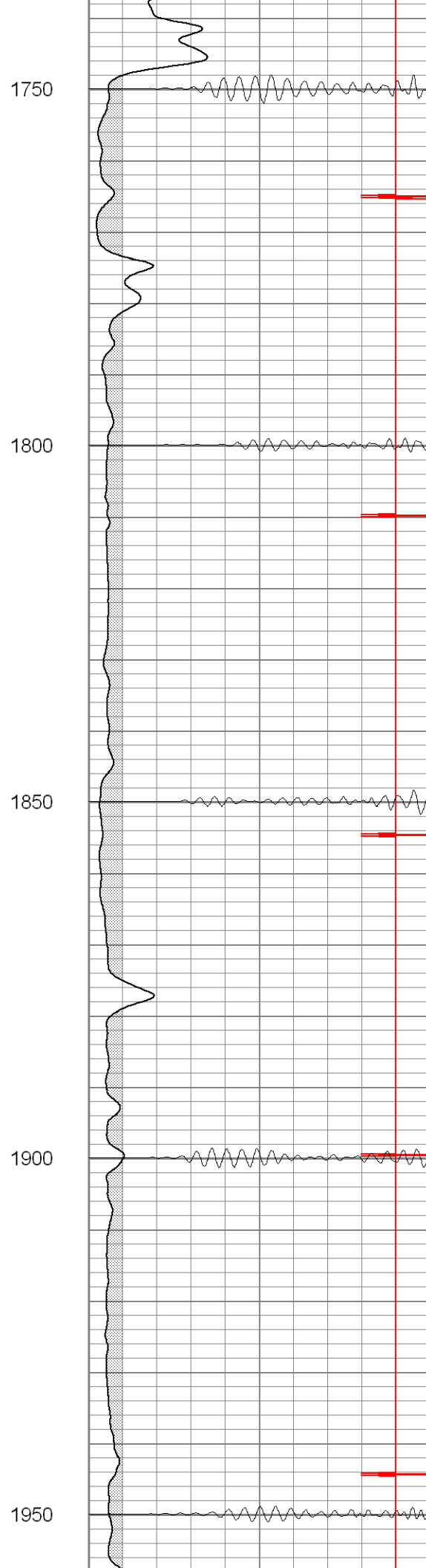
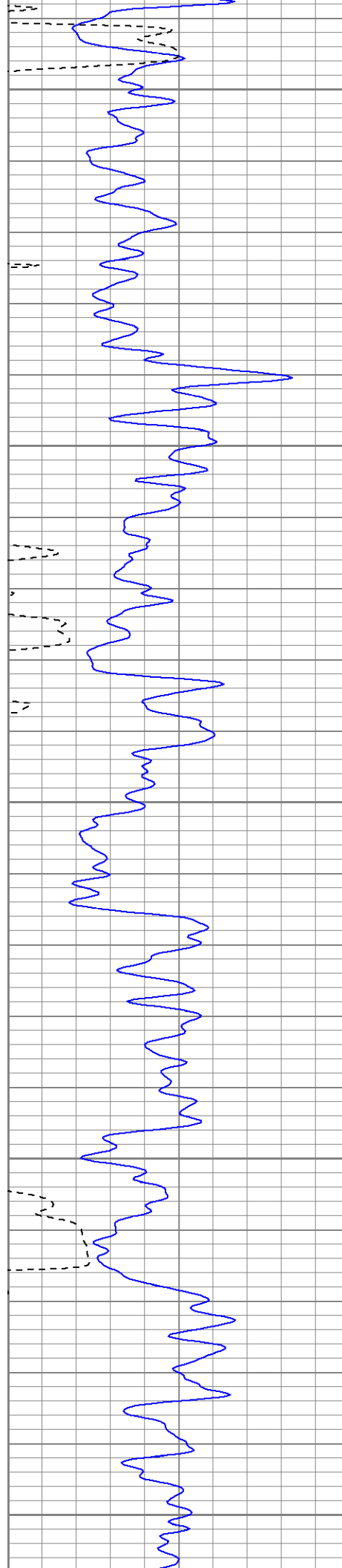


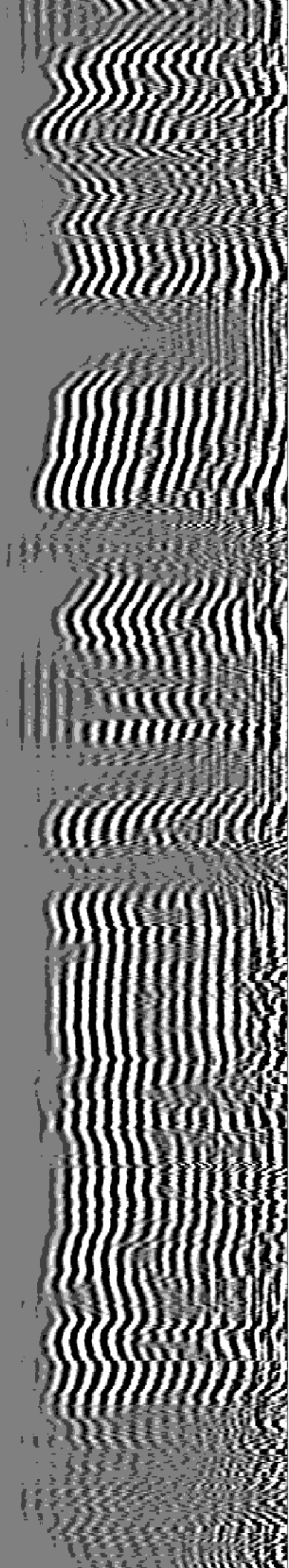
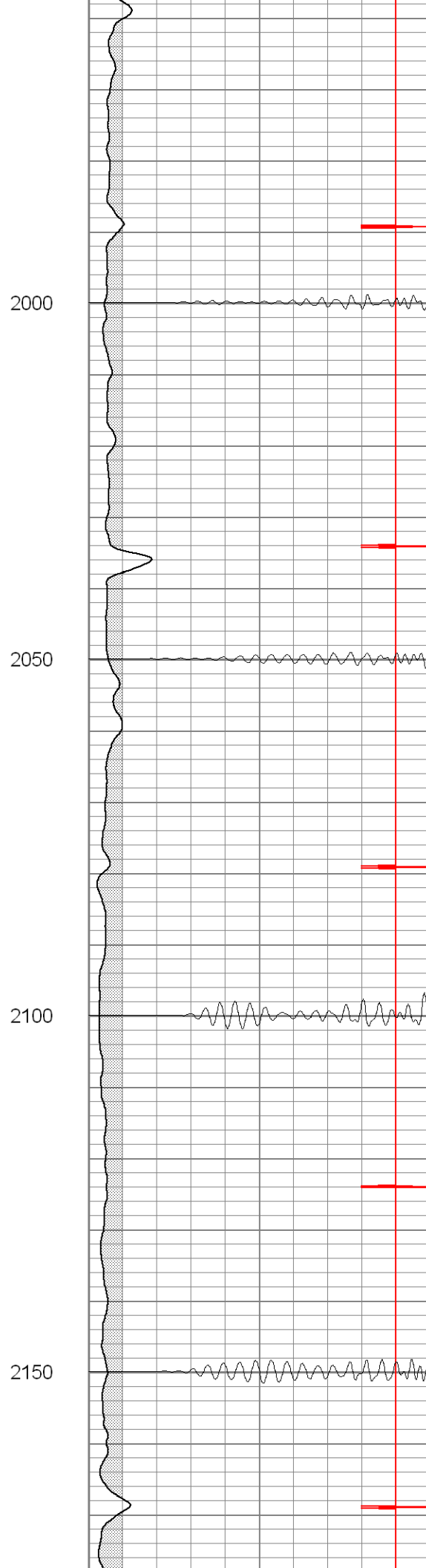
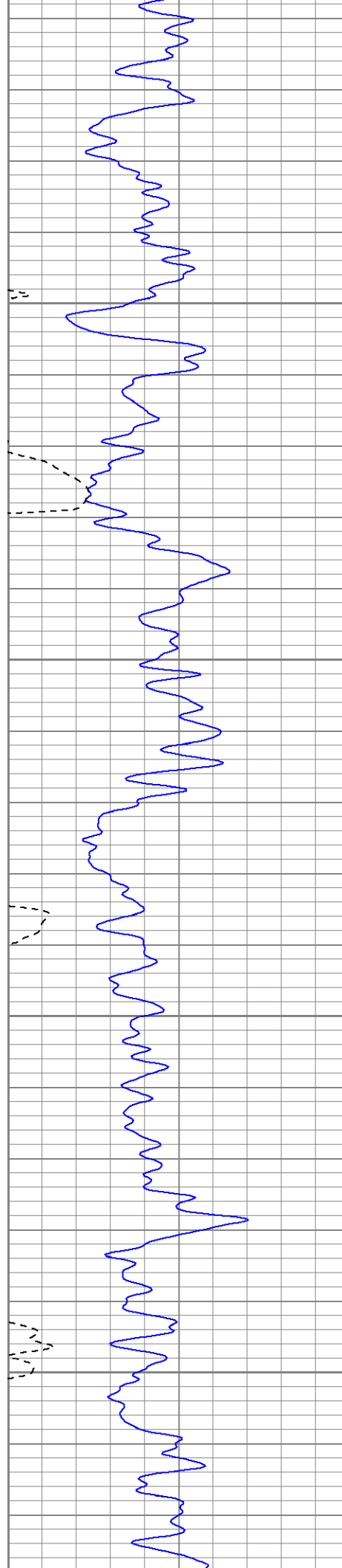


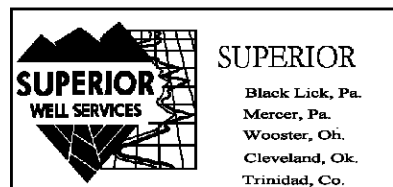
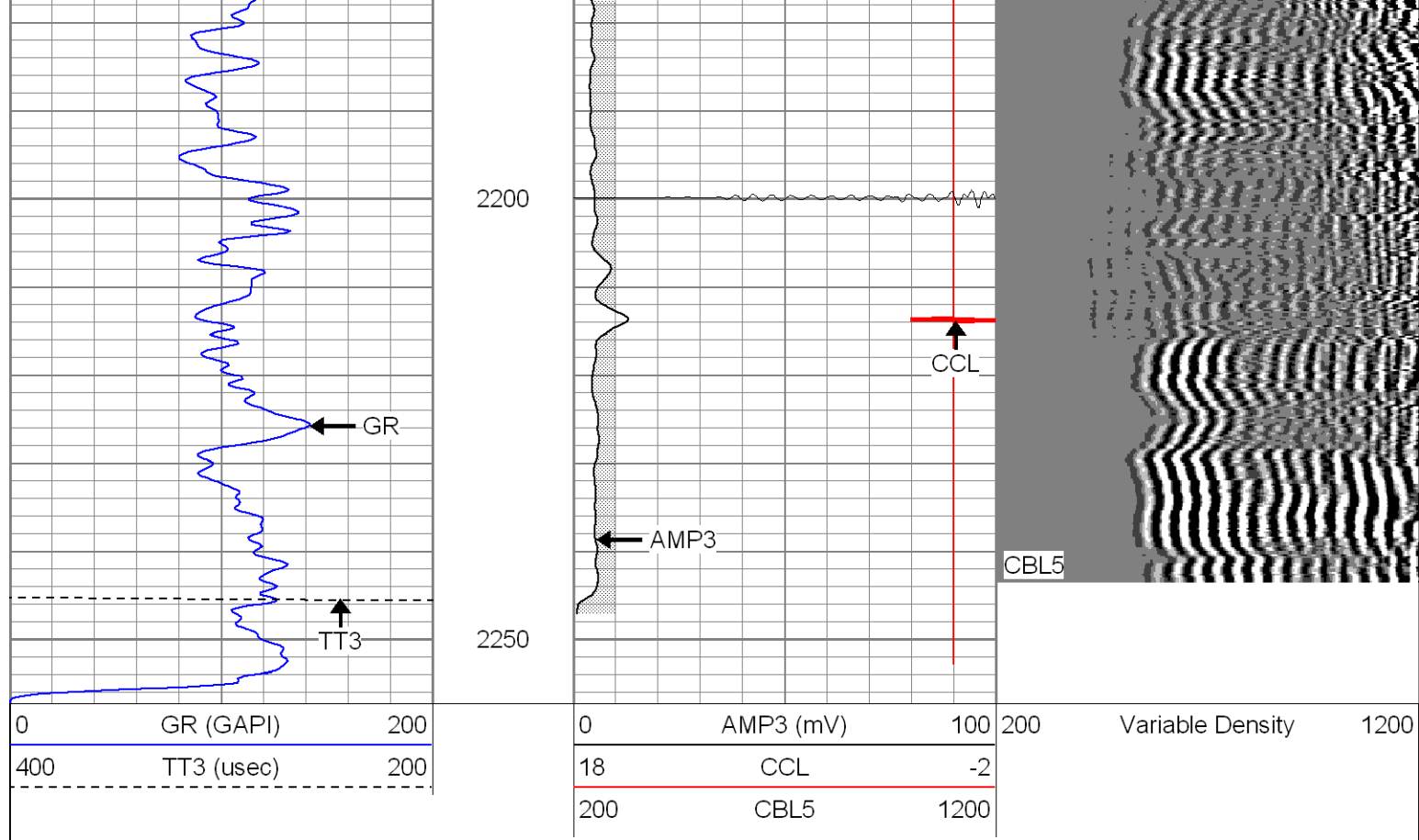






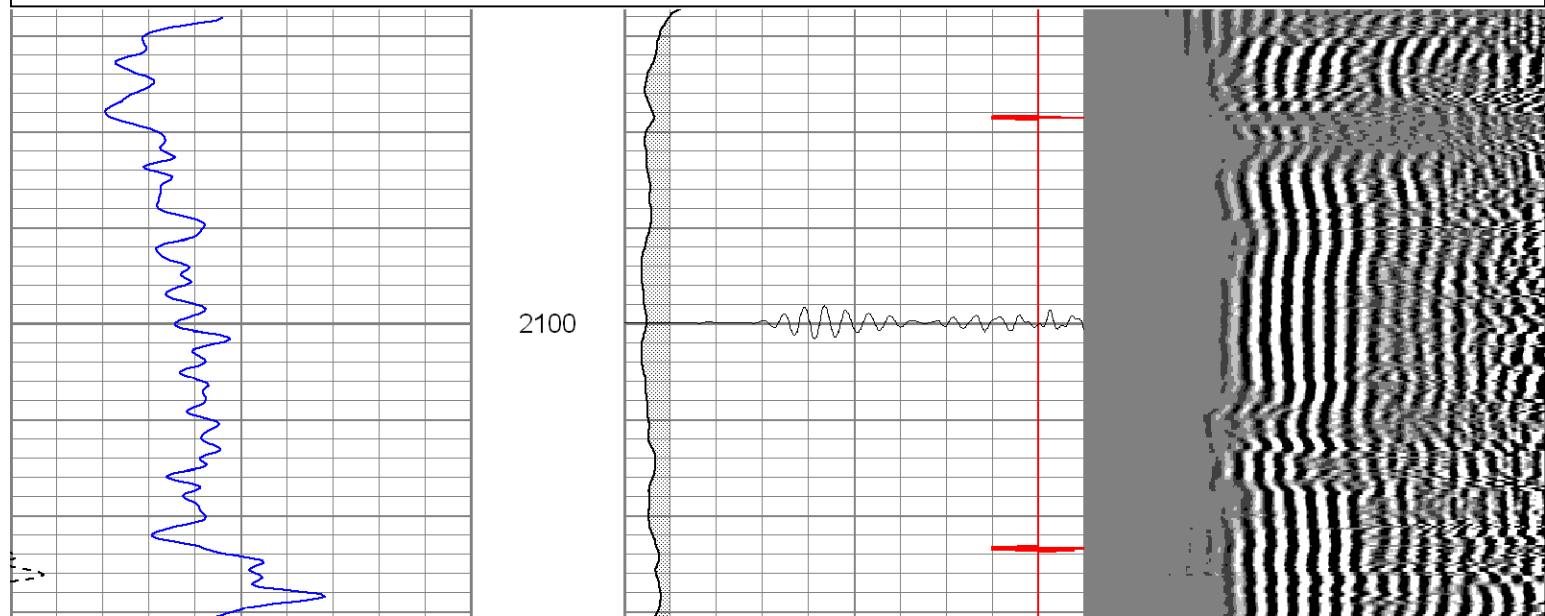
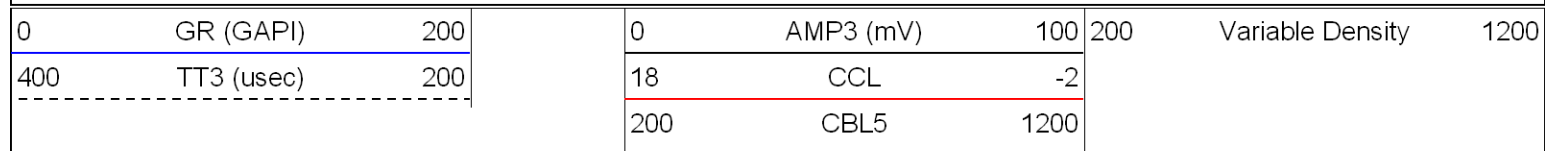


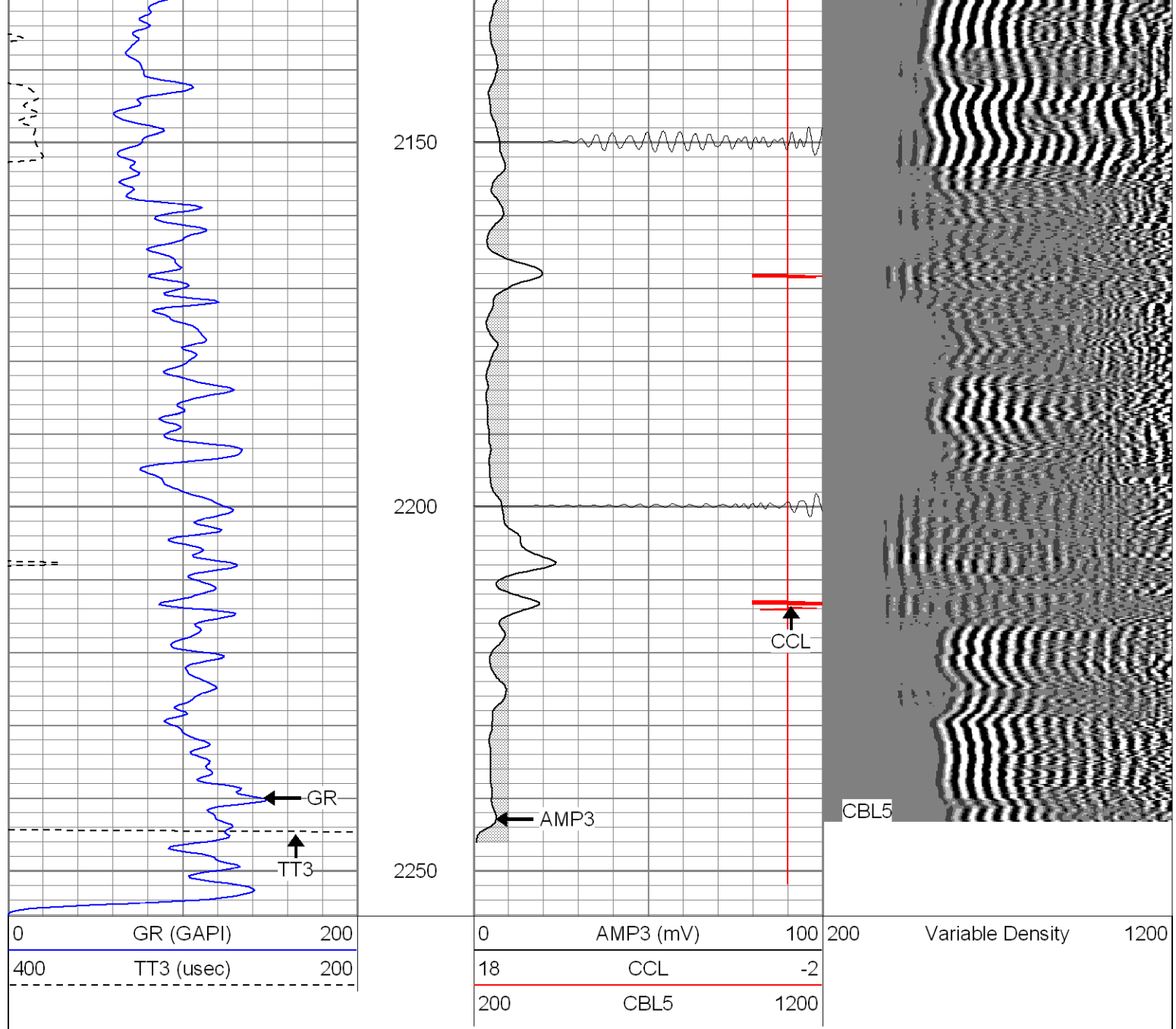




Repeat Section (0PSI)

Database File: hr1609vx42707b.db
 Dataset Pathname: pass1
 Presentation Format: cblrt
 Dataset Creation: Fri Apr 27 11:59:24 2007 by Log Open-Cased 061129
 Charted by: Depth in Feet scaled 1:240





| | | |
|------------------------------------|---|----------|
| Calibration Report | | |
| Database File: | hr1609vx42707b.db | |
| Dataset Pathname: | pass1 | |
| Dataset Creation: | Fri Apr 27 11:59:24 2007 by Log Open-Cased 061129 | |
| Gamma Ray Calibration Report | | |
| Serial Number: | 2.75 | |
| Tool Model: | T3 | |
| Performed: | Thu Apr 26 15:45:55 2007 | |
| Calibrator Value: | 1.0 | GAPI |
| Background Reading: | 0.0 | cps |
| Calibrator Reading: | 1.0 | cps |
| Sensitivity: | 1.1500 | GAPI/cps |
| Cement Bond Log Calibration Report | | |
| Serial Number: | Titan4 | |
| Tool Model: | T4 | |

Thu Apr 26 16:55:02 2007

| | |
|---------|----|
| 74.8132 | ft |
| 5.5 | in |

5' Spacing

| | | |
|-----------|----------|----|
| 0 | 0 | mV |
| 85 | 71.921 | mV |
| 0.0239014 | 0.020166 | V |
| 1.35 | 1.63755 | V |

| | |
|---------|-----------|
| 64.0978 | 44.4675 |
| 1 | -0.896733 |

[illegible]