



SUPERIOR
Black Lick, Pa.
Mercer, Pa.
Wooster, Oh.
Cleveland, Ok.
Trinidad, Co.

GAMMA NEUTRON LOG

Company XTO Energy Inc.
Well Hill Ranch 31-08
Field Purgatorie River
County Las Animas State CO

Location: API #: 05 071 09200 00
2081' FNL & 227' FEL

Other Services
Cbl

SEC 31 TWP 34S RGE 67W

Permanent Datum Ground Level Elevation 8214'
Log Measured From Ground Level
Drilling Measured From Ground Level

Elevation
K.B. -----
D.F. -----
G.L. 8214'

Date 4-17-07

Run Number	One
Depth Driller	2785'
Depth Logger	2683'
Bottom Logged Interval	2681'
Top Log Interval	1800'
Open Hole Size	7 7/8"
Type Fluid	Water
Density / Viscosity	///
Max. Recorded Temp.	///
Estimated Cement Top	136'
Time Well Ready	ROA
Time Logger on Bottom	3:30PM
Equipment Number	T0698
Location	Trinidad
Recorded By	J Sinerros
Witnessed By	Mr. Ryan Rensink

Borehole Record		Tubing Record					
Run Number	Bit	From	To	Size	Weight	From	To

Casing Record	Size	Wgt/Ft	Top	Bottom
Surface String	8 5/8"		00	482'
Prot. String				
Production String	5 1/2"		00	N/A
Liner				

<<< Fold Here >>>

All interpretations are opinions based on inferences from electrical or other measurements and we cannot and do not guarantee the accuracy or correctness of any interpretation, and we shall not, except in the case of gross or willful negligence on our part, be liable or responsible for any loss, costs, damages, or expenses incurred or sustained by anyone resulting from any interpretation made by any of our officers, agents or employees. These interpretations are also subject to our general terms and conditions set out in our current Price Schedule.

Comments

First Bosque Just before Weston, up Little Bingham thru Hill Ranch cattle guard,
second right, first location on right.



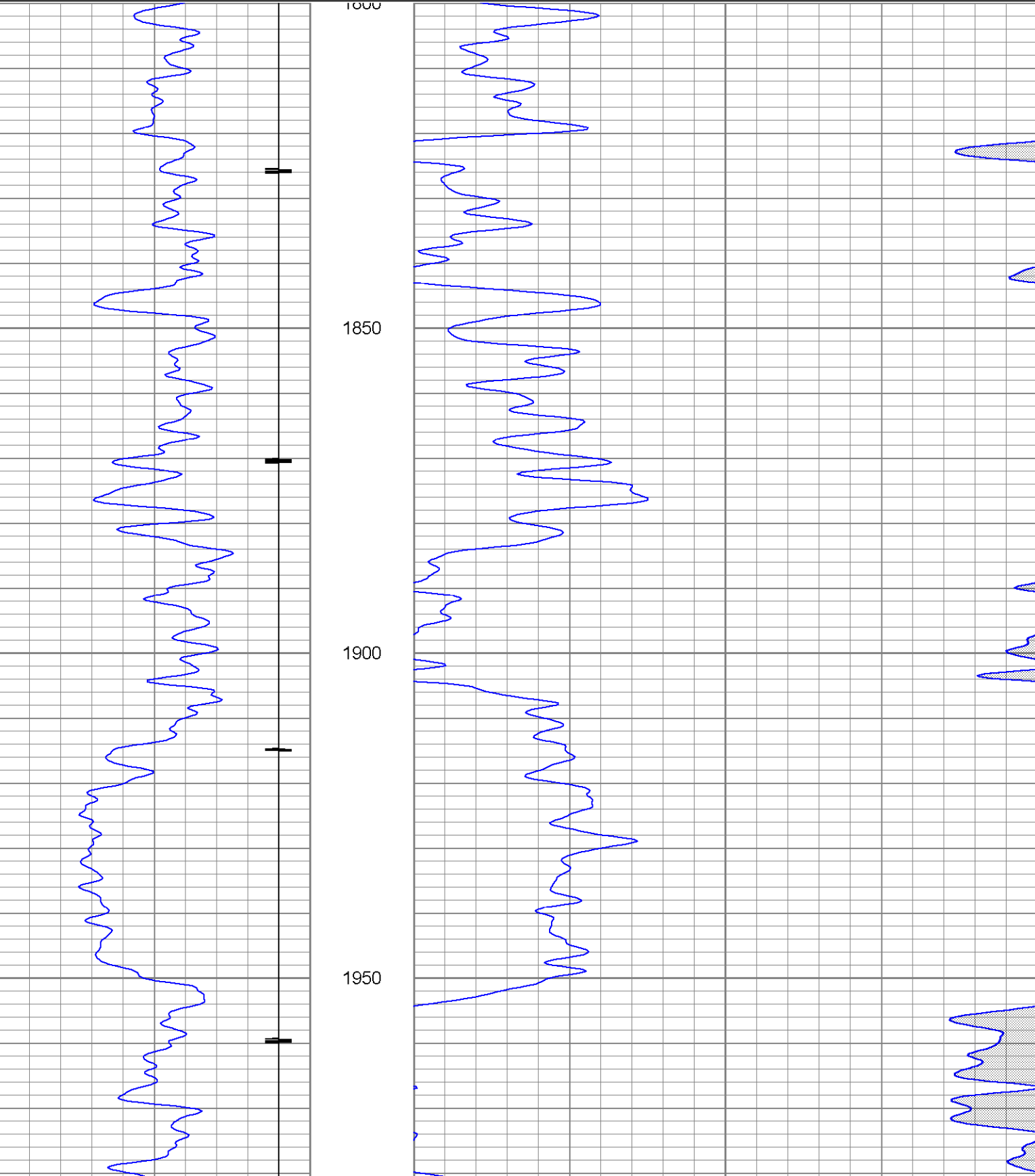
SUPERIOR

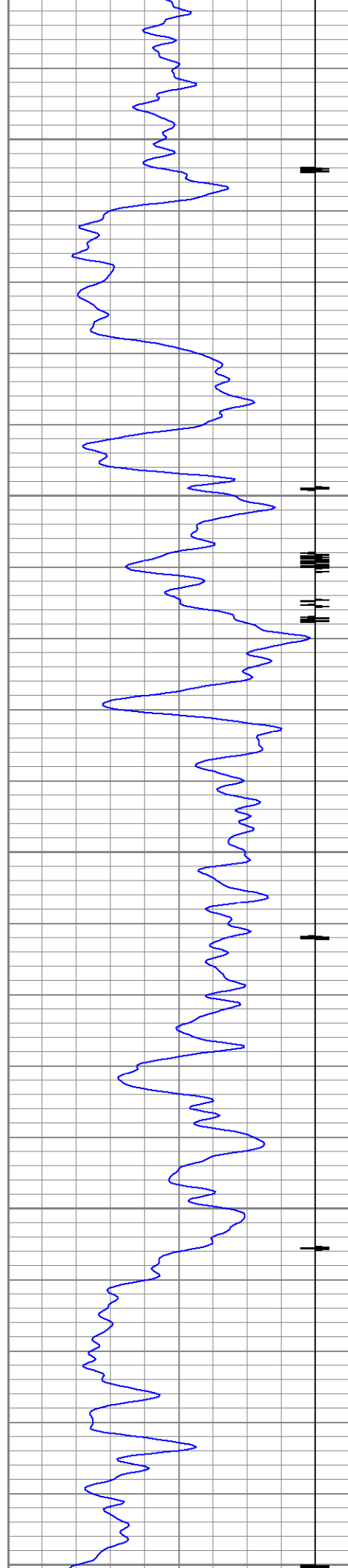
Black Lick, Pa.
Mercer, Pa.
Wooster, Oh.
Cleveland, Ok.
Trinidad, Co.

Main Pass

Database File: xtohr3108bn41707.db
Dataset Pathname: pass2.2
Presentation Format: gr-n-ccl
Dataset Creation: Wed Apr 18 07:04:27 2007 by Calc Open-Cased 060407
Charted by: Depth in Feet scaled 1:240

45	CCL	-5	30	NPOR (pu)	-10
0	GR (GAPI)	200	70	NPOR (pu)	30
200	GR (GAPI)	400			





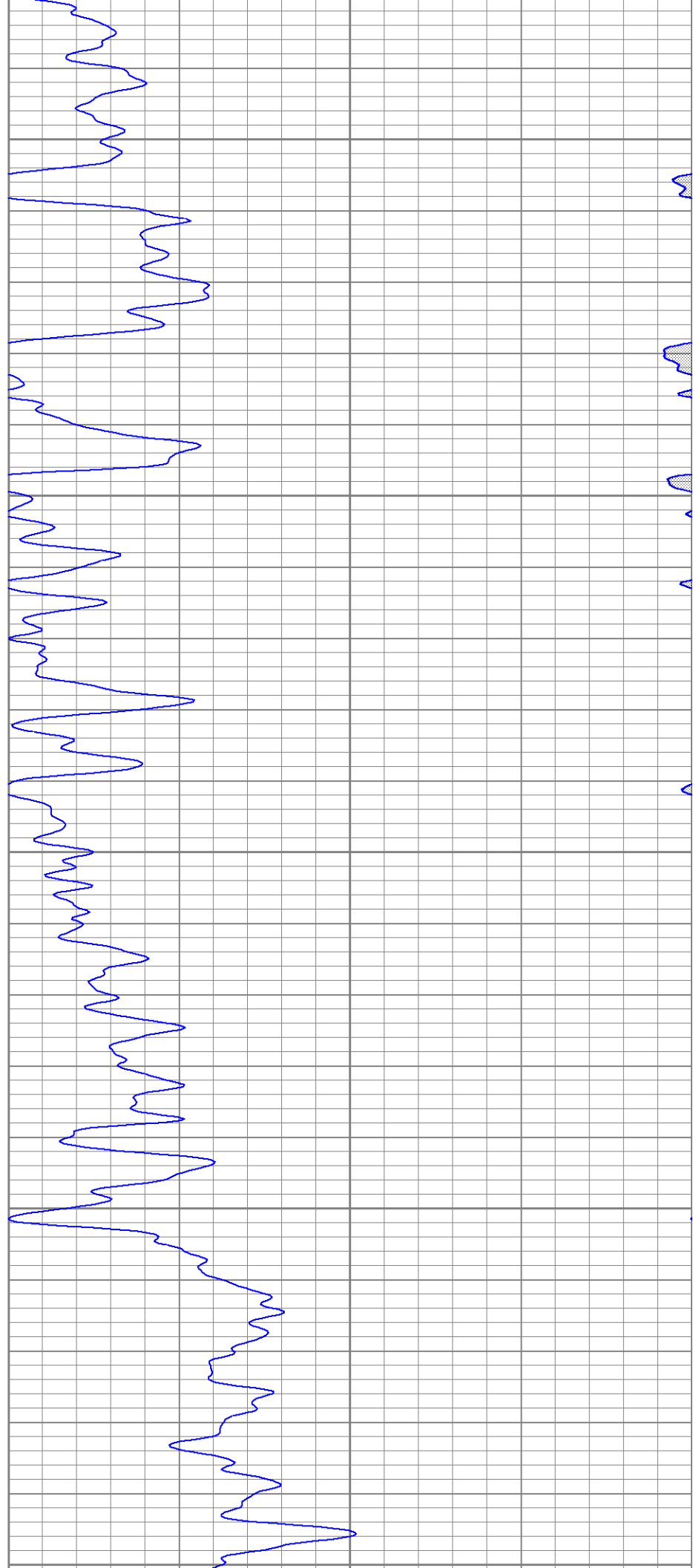
2000

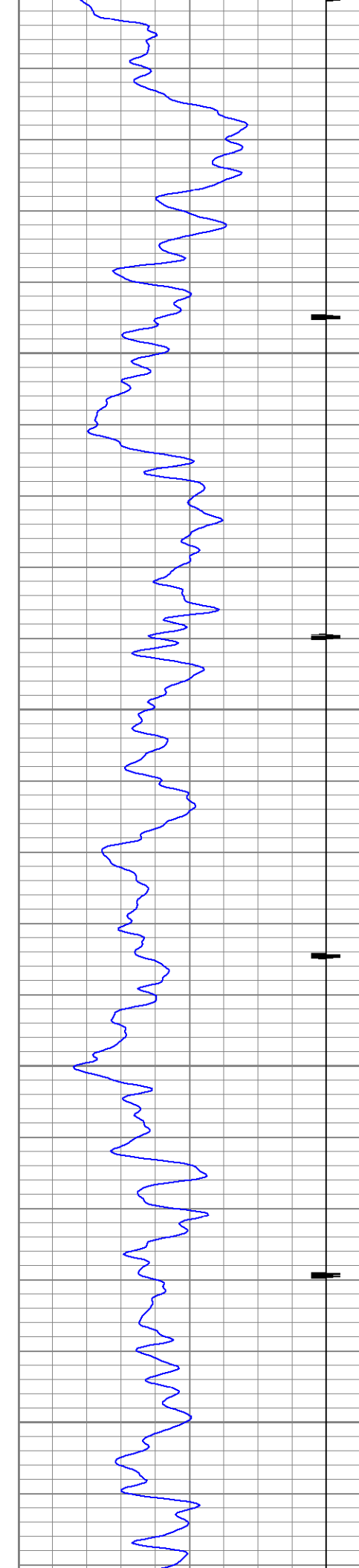
2050

2100

2150

2200





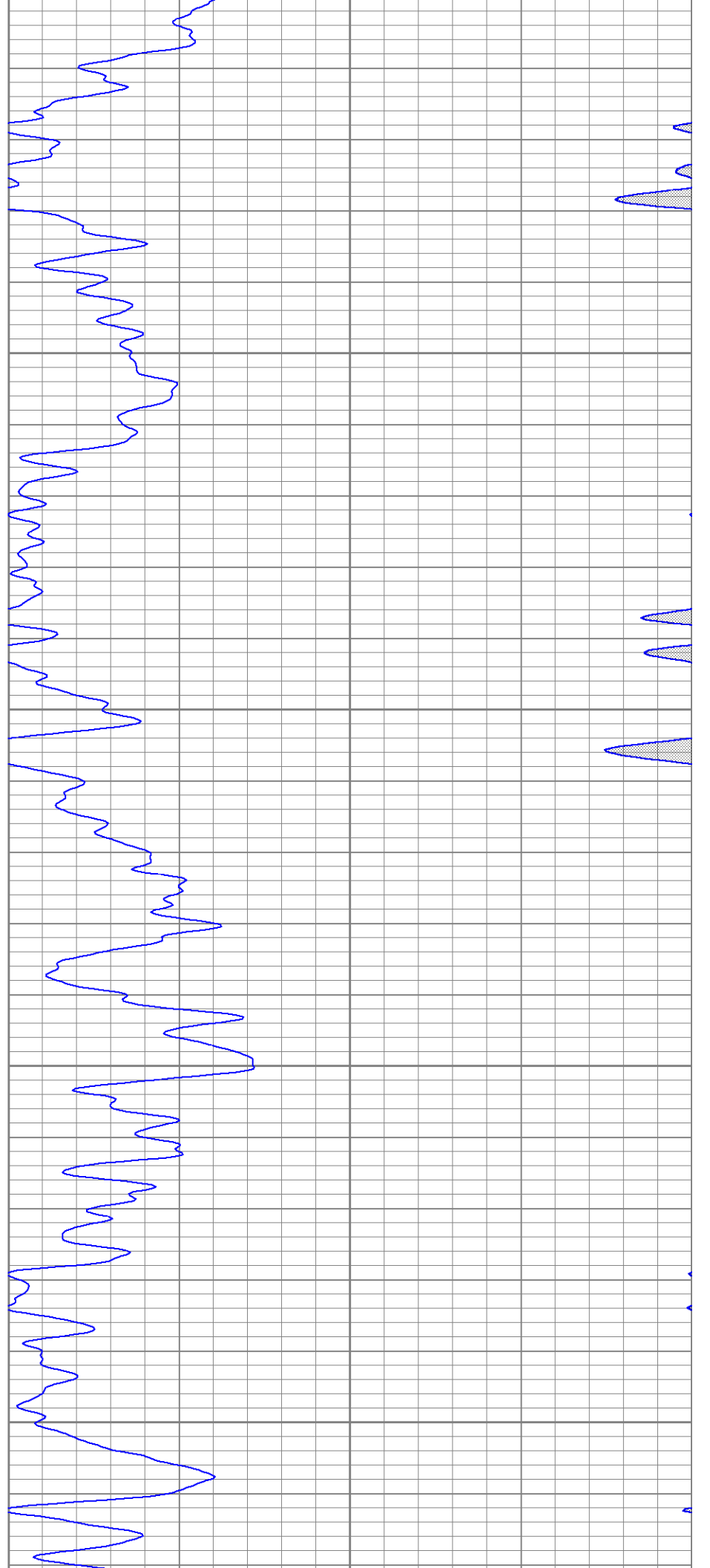
2200

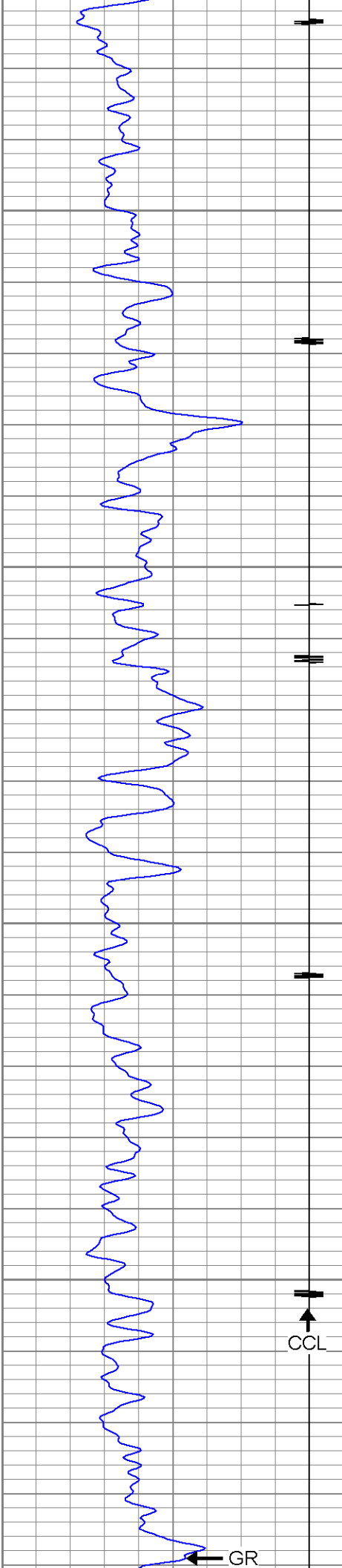
2250

2300

2350

2400



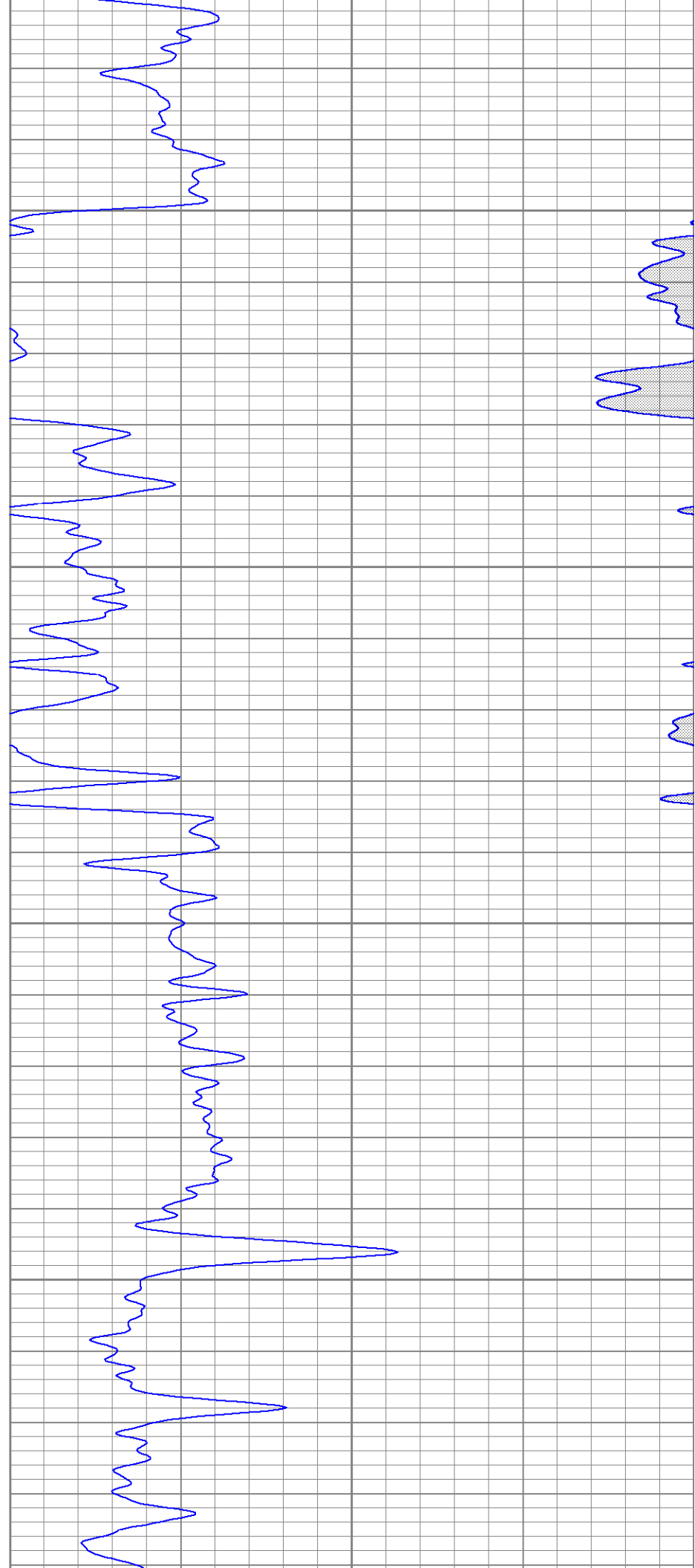


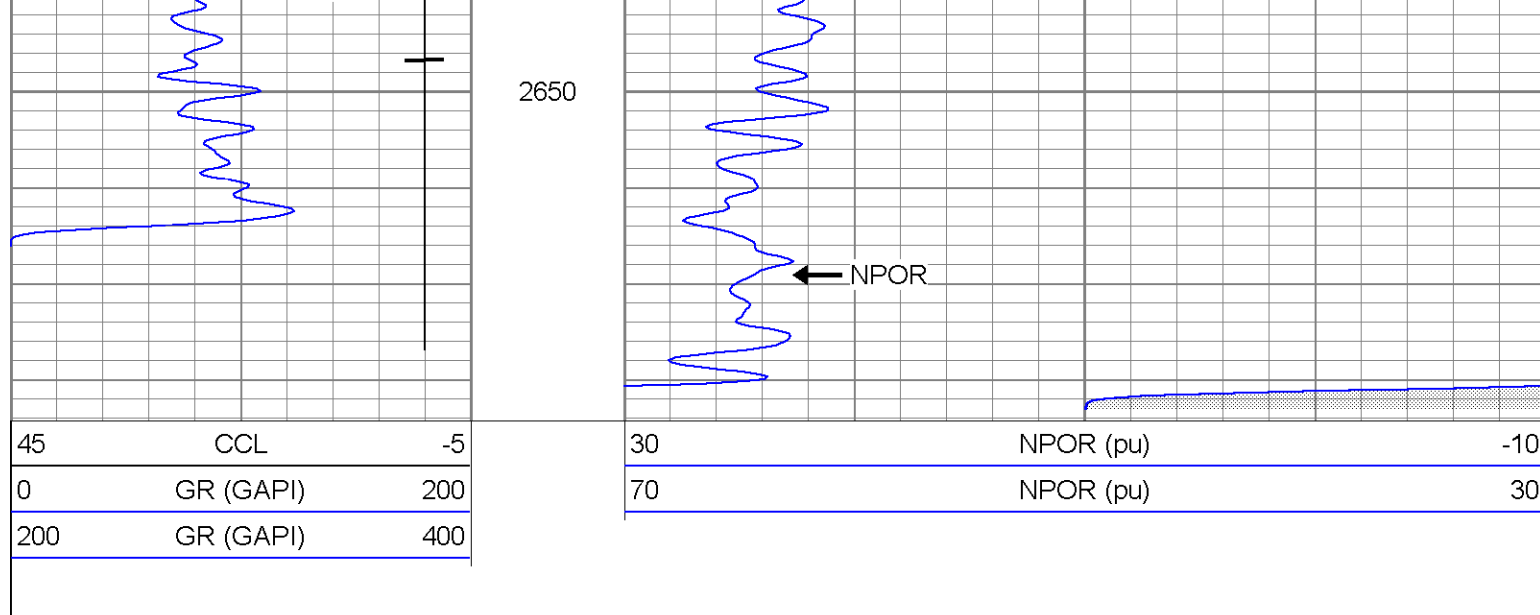
2450

2500

2550

2600







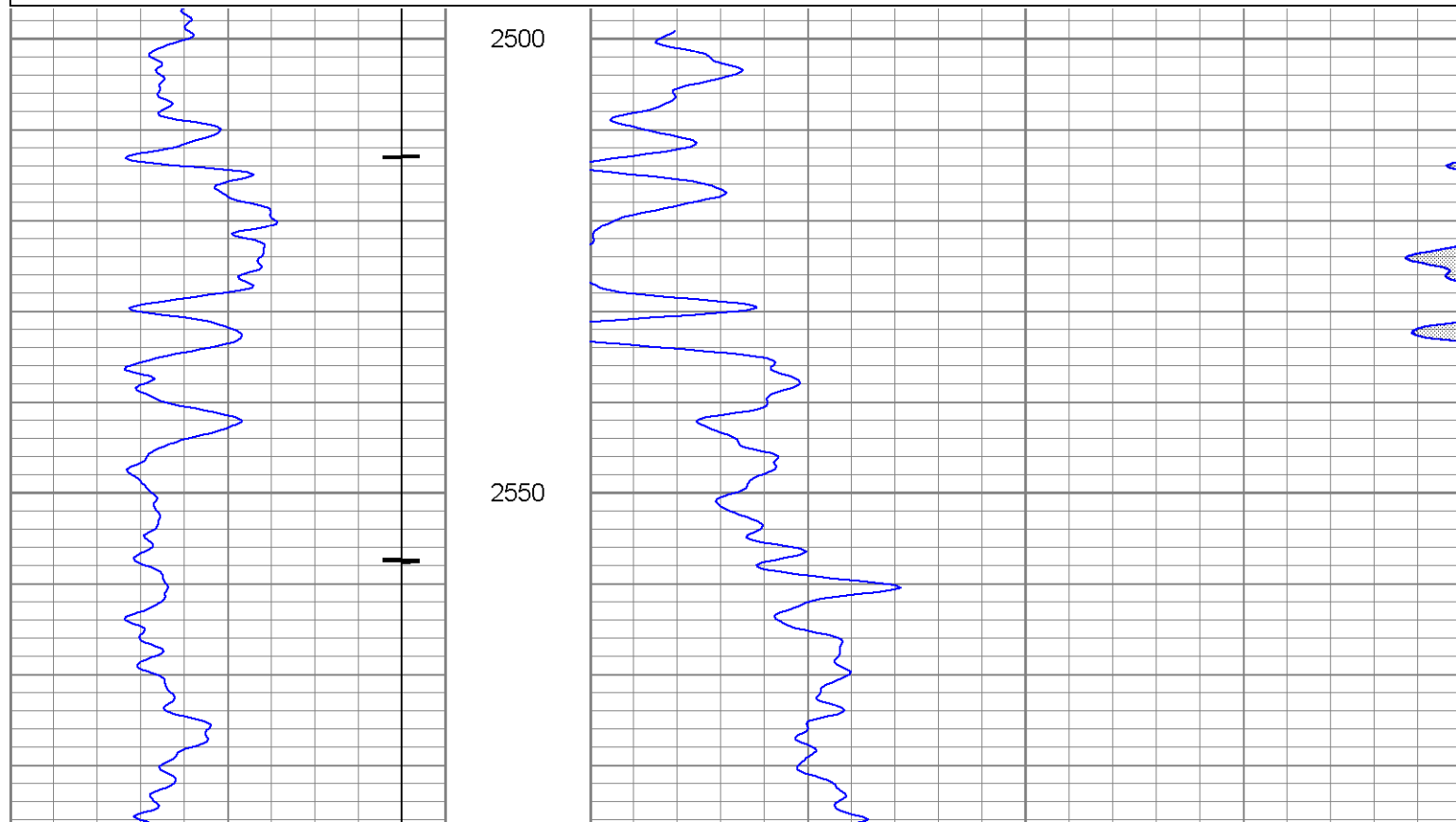
SUPERIOR
WELL SERVICES

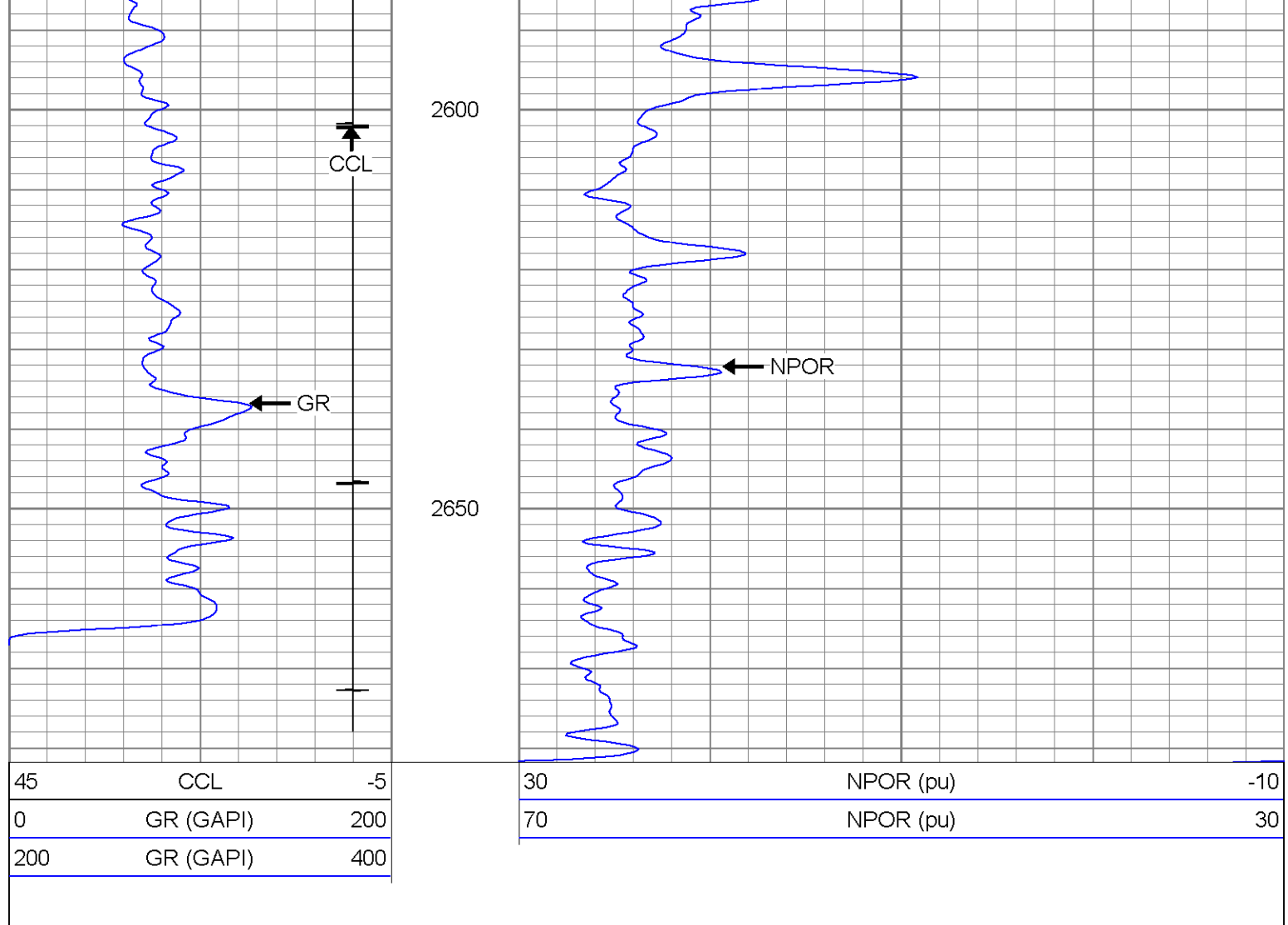
Black Lick, Pa.
Mercer, Pa.
Wooster, Oh.
Cleveland, Ok.
Trinidad, Co.

Repeat Section

Database File: xtohr3108bn41707.db
 Dataset Pathname: pass1.2
 Presentation Format: gr-n-ccl
 Dataset Creation: Wed Apr 18 07:14:48 2007 by Calc Open-Cased 060407
 Charted by: Depth in Feet scaled 1:240

45	CCL	-5	30	NPOR (pu)	-10
0	GR (GAPI)	200	70	NPOR (pu)	30
200	GR (GAPI)	400			





Calibration Report

Database File: xtohr3108bn41707.db
Dataset Pathname: pass1
Dataset Creation: Tue Apr 17 16:05:03 2007 by Log Open-Cased 060407

Neutron Calibration Report

Serial Number: Titan
Tool Model: T
Performed: Thu Apr 12 15:50:20 2007

Calibrator Value: 1200 NAPI
Calibrator Reading: 1700 cps
Sensitivity: 1 NAPI/cps

Cement Bond Log Calibration Report

Serial Number: Titan2
Tool Model: 2
Performed: Tue Apr 17 12:40:40 2007

Depth: 377.484 ft
Casing Diameter: 5.5 in

	3' Spacing	5' Spacing	
Signal Zero:	1	1	mV
Calibrated Amplitude:	85	81.921	mV

Reading at Signal Zero:	-0.02	0.0181641	V
Reading in Free Pipe:	1.6	1.33	V
Gain:	51.8519	61.6853	
Offset:	1	-0.120458	

Gamma Ray Calibration Report

Serial Number:	TITAN2	
Tool Model:	T2	
Performed:	Mon Apr 16 12:08:03 2007	
Calibrator Value:	200.0	GAPI
Background Reading:	54.0	cps
Calibrator Reading:	219.0	cps
Sensitivity:	0.9000	GAPI/cps

Sensor	Offset (ft)	Schematic	Description	Len (ft)	OD (in)	Wt (lb)
CHD	20.42		CHD-None (0)	0.75	1.50	5.00
GR	18.41		GR-T2 (TITAN2)	2.52	2.44	25.00
WVF5	14.26		CBL-2 (Titan2)	7.23	2.44	110.00
WVF3	13.26					
CENT	9.92		CENT-X (1)	3.00	1.69	25.00
CCL	5.71		CCL-T2 (Titan2)	1.91	2.75	15.00
NEU	1.41		NEU-T (Titan)	5.01	1.69	21.00
Dataset: xtohr3108bn41707.db: field/well/run1/pass1 Total Length: 20.42 ft Total Weight: 201.00 lb O.D. 2.75 in						