

BRAN-DEX		WIRELINE SERVICES	
CEMENT BOND		GAMMA RAY	
COLAR CORRELATION LOG			
Company K.P. KAUFFMAN CO.		Company K.P. KAUFFMAN CO.	
Well CAMENISCH 2 - 32		Well CAMENISCH 2 - 32	
Field WATTENBERG		Field WATTENBERG	
County WELD		County WELD	
State COLORADO		State COLORADO	
Location: API # : 05 - 123 - 24571 - 00		Location: SEC 32 TWP 4 N RGE 67 W	
Permanent Datum		Permanent Datum	
Log Measured From KELLY BUSHING		Log Measured From KELLY BUSHING	
Drilling Measured From KELLY BUSHING		Drilling Measured From KELLY BUSHING	
Elevation K.B. 4994		Elevation D.F. 4993	
Elevation G.L. 4982		Elevation G.L. 4982	
NONE		Other Services	
Run Number ONE		Run Number ONE	
Depth Driller 7946		Depth Driller 7946	
Depth Logger 7891		Depth Logger 7891	
Bottom Logged Interval 7884		Bottom Logged Interval 7884	
Top Log Interval 3140		Top Log Interval 3140	
Open Hole Size 7 7/8		Open Hole Size 7 7/8	
Type Fluid WATER		Type Fluid WATER	
Density / Viscosity		Density / Viscosity	
Max. Recorded Temp. NOT RECORDED		Max. Recorded Temp. NOT RECORDED	
Estimated Cement Top 3260		Estimated Cement Top 3260	
Time Well Ready		Time Well Ready	
Time Logger on Bottom		Time Logger on Bottom	
Equipment Number 455/MAST/WHITE		Equipment Number 455/MAST/WHITE	
Location BRIGHTON		Location BRIGHTON	
Recorded By HAYES		Recorded By HAYES	
Witnessed By MR. RICK OHLEMEIER		Witnessed By MR. RICK OHLEMEIER	
Borehole Record		Borehole Record	
Run Number		Run Number	
Bit		Bit	
From		From	
To		To	
Size		Size	
Weight		Weight	
From		From	
To		To	
Tubing Record		Tubing Record	
Run Number		Run Number	
Bottom		Bottom	
Top		Top	
Wgt/Ft		Wgt/Ft	
Size		Size	
Casing Record		Casing Record	
Surface String		Surface String	
Prot String		Prot String	
Production String		Production String	
Liner		Liner	

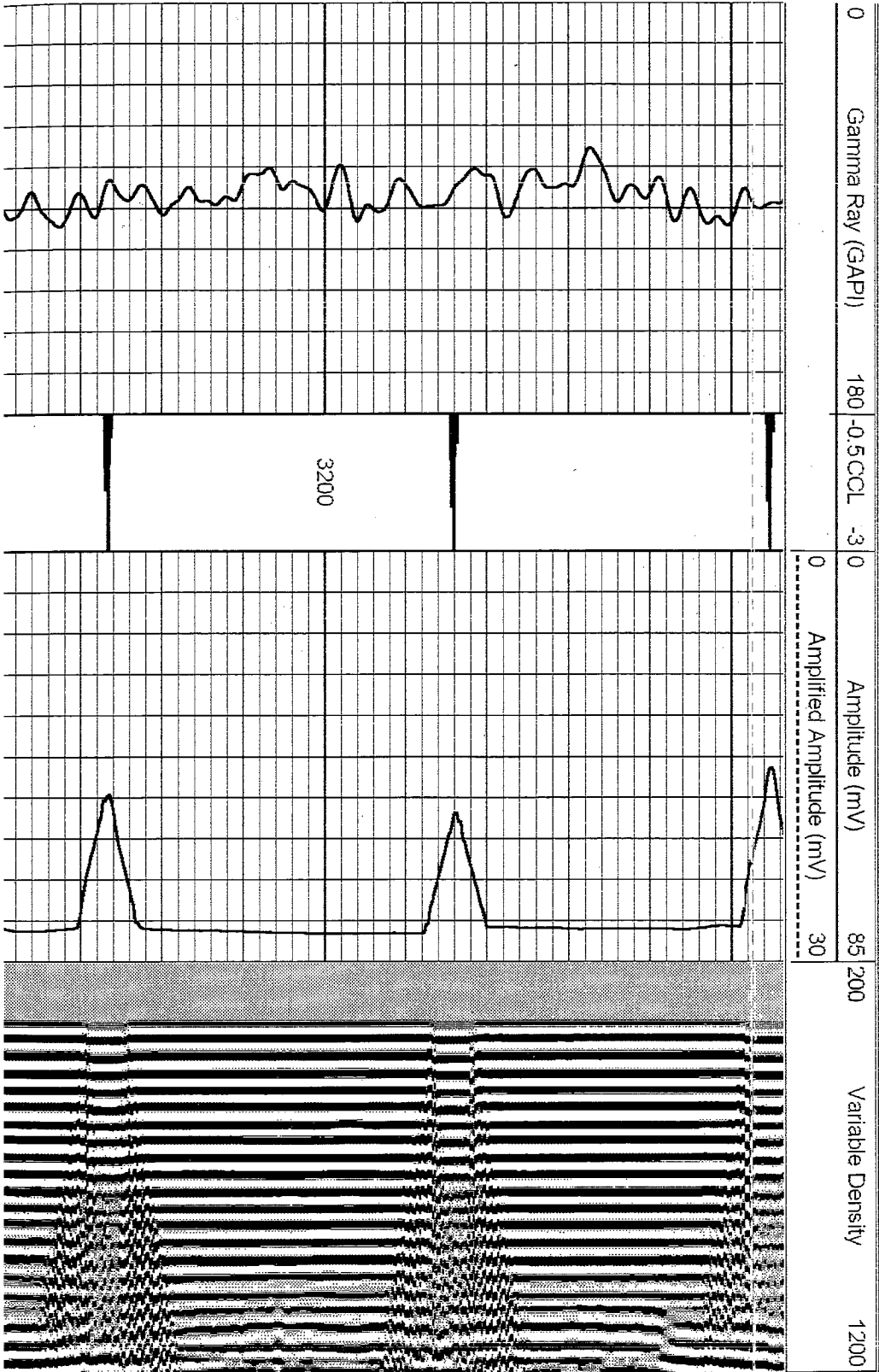
<<< Fold Here >>>

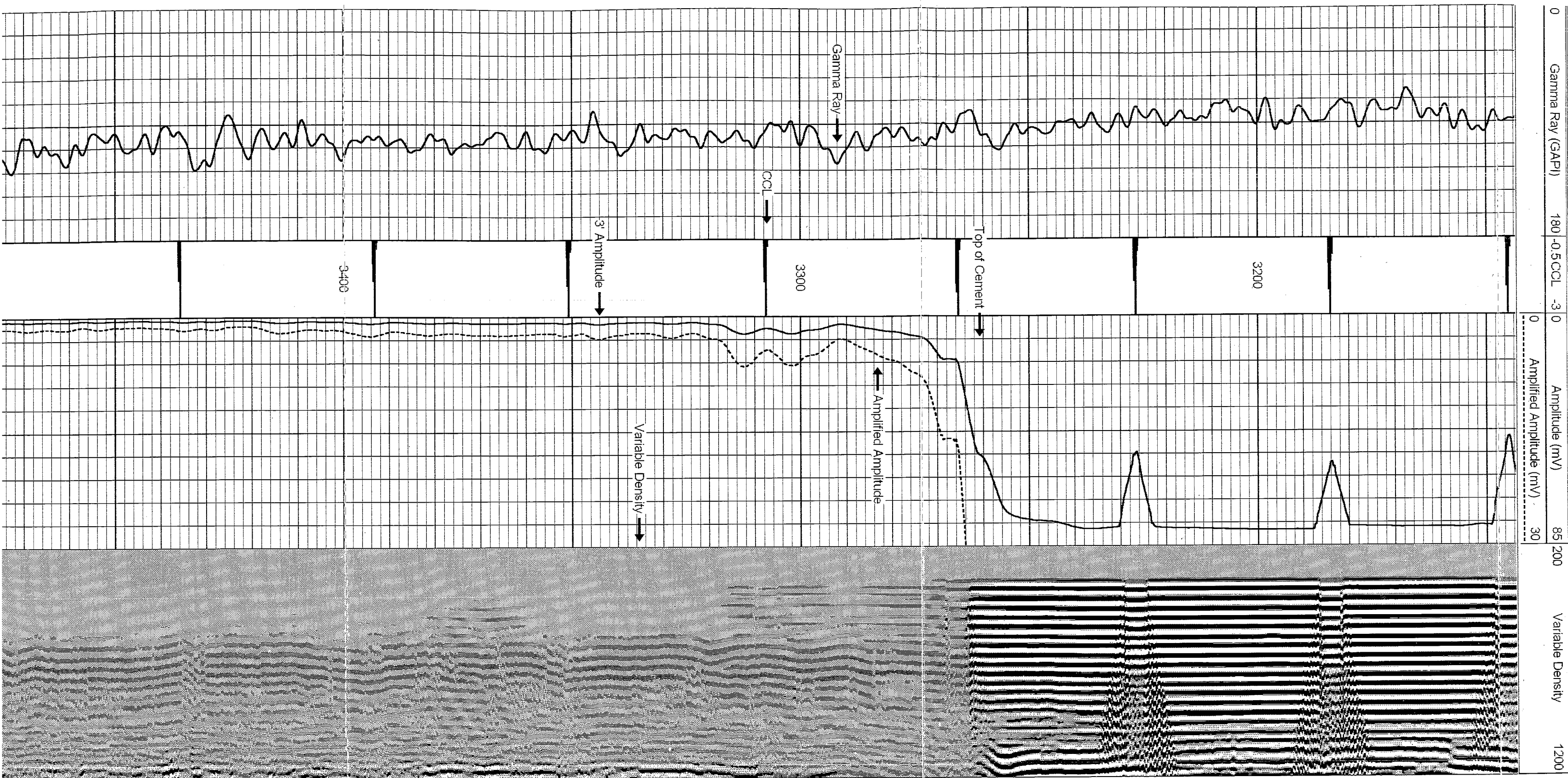
All interpretations are opinions based on inferences from electrical or other measurements and we cannot and do not guarantee the accuracy or correctness of any interpretation, and we shall not, except in the case of gross or willful negligence on our part, be liable or responsible for any loss, costs, damages, or expenses incurred or sustained by anyone resulting from any interpretation made by any of our officers, agents or employees. These interpretations are also subject to our general terms and conditions set out in our current Price Schedule.

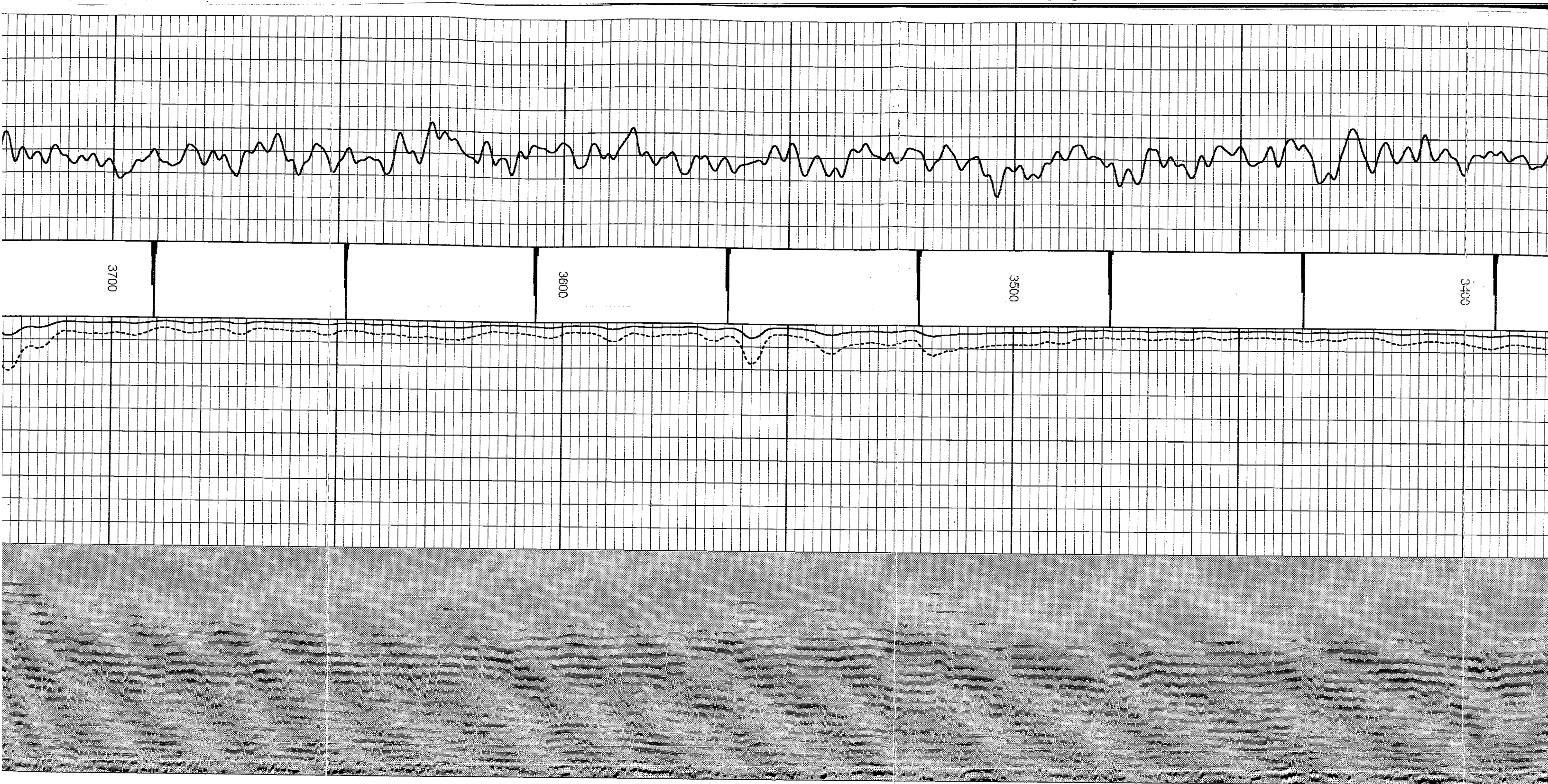
Comments

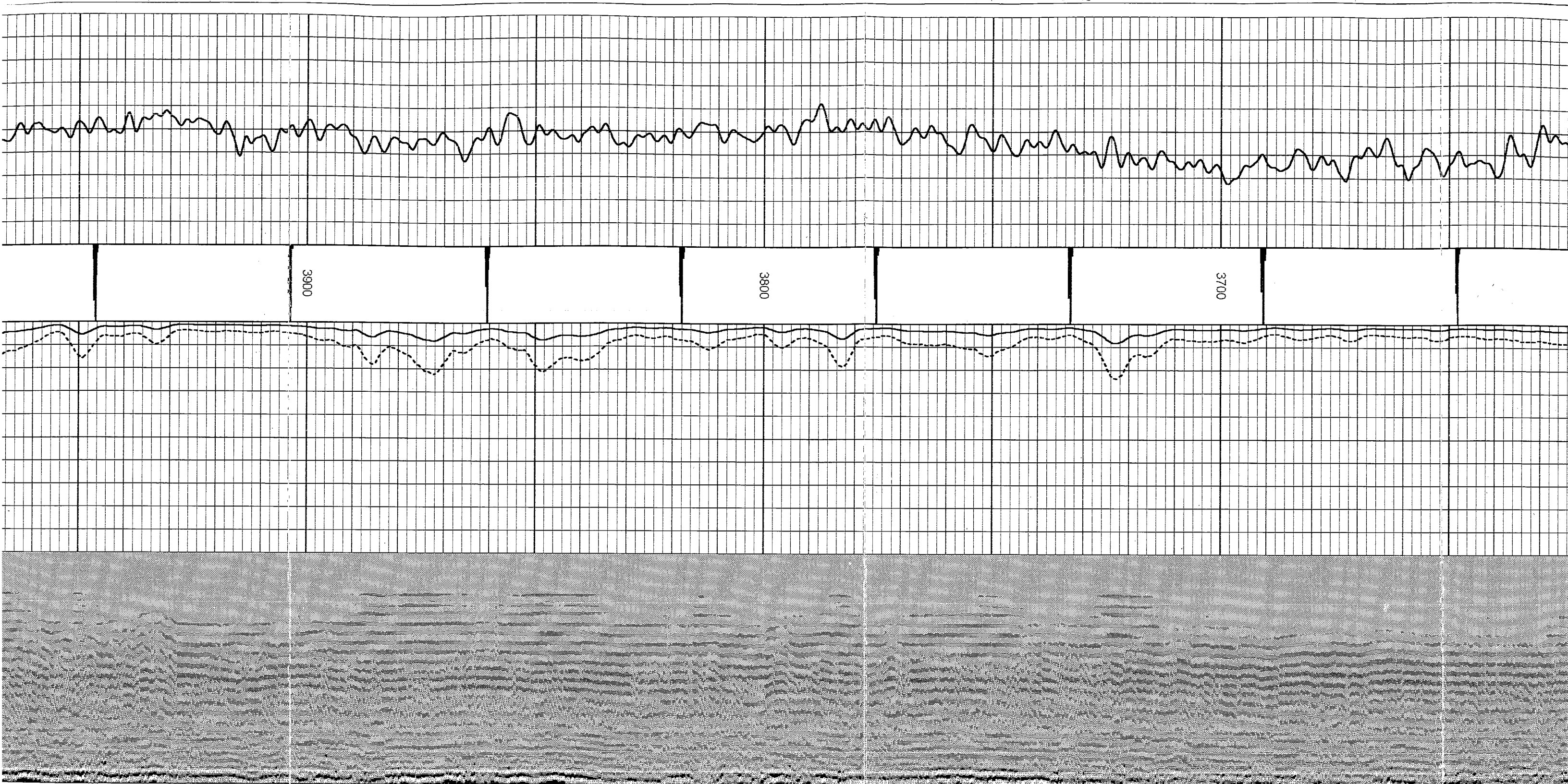
LOG CORRELATED TO CD/CNDI LOG
DATED 3 - 11 - 2007
LOG SPLIT AT 5500
FOR CORRELATION PURPOSES

Database File: camenisch2-32.db
Dataset Pathname: pass2
Presentation Format: cbix
Dataset Creation: Thu Apr 05 10:25:08 2007 by Log Warrior 7.0 STD Cas
Charted by: Depth in Feet scaled 1:240

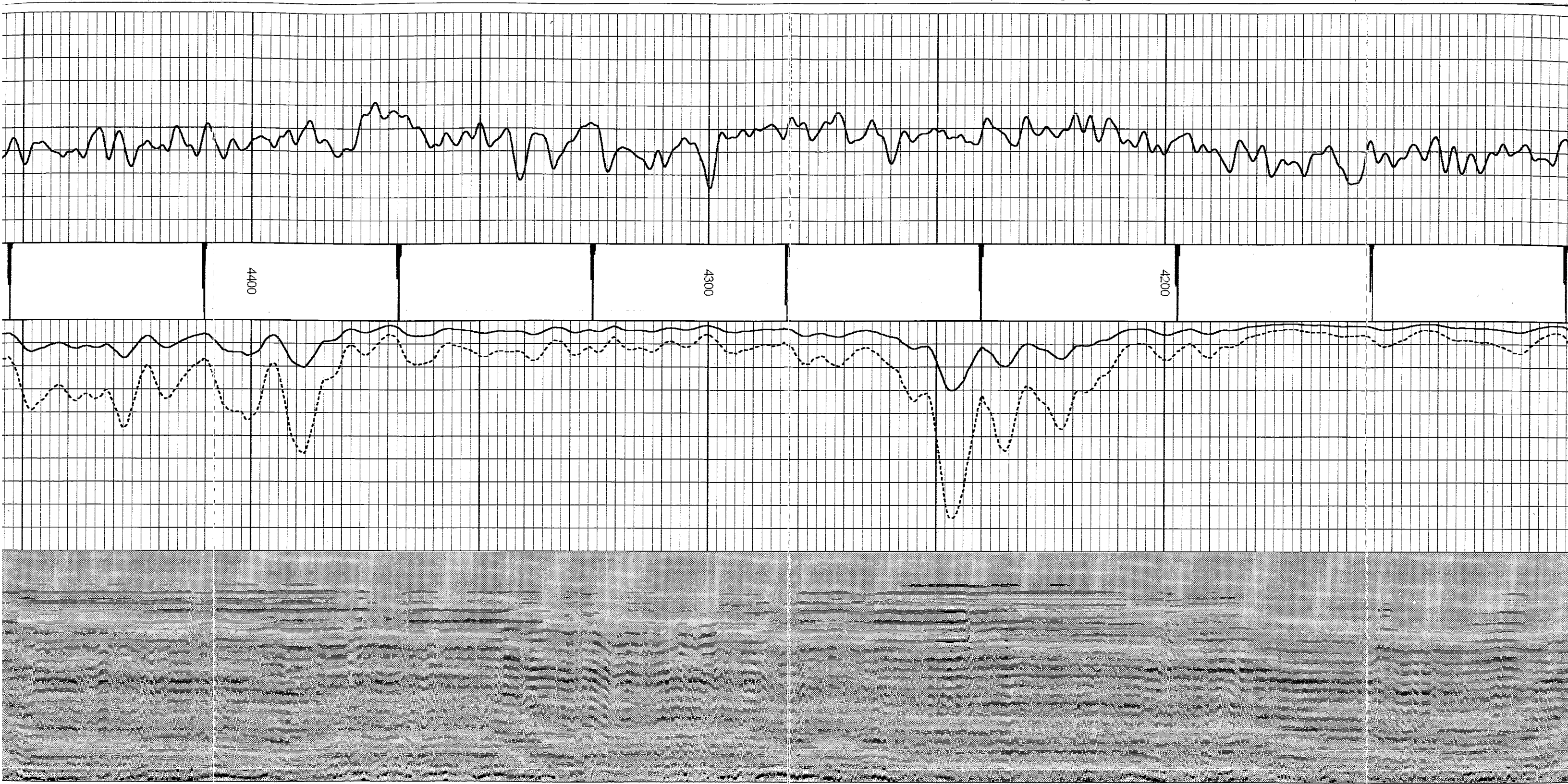


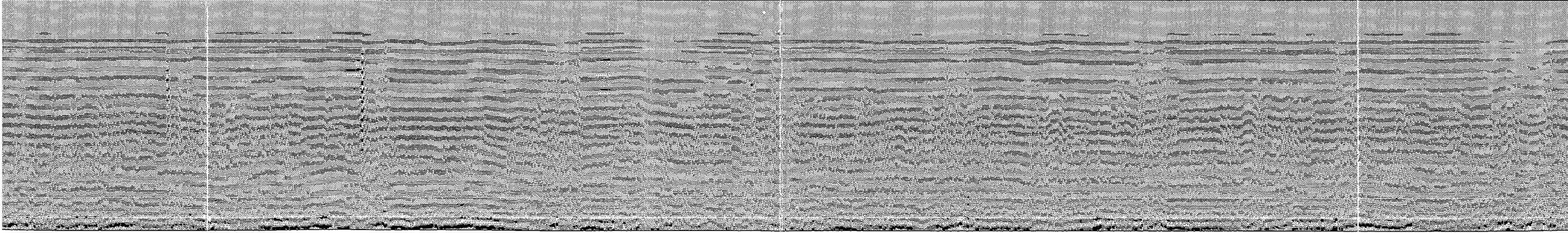
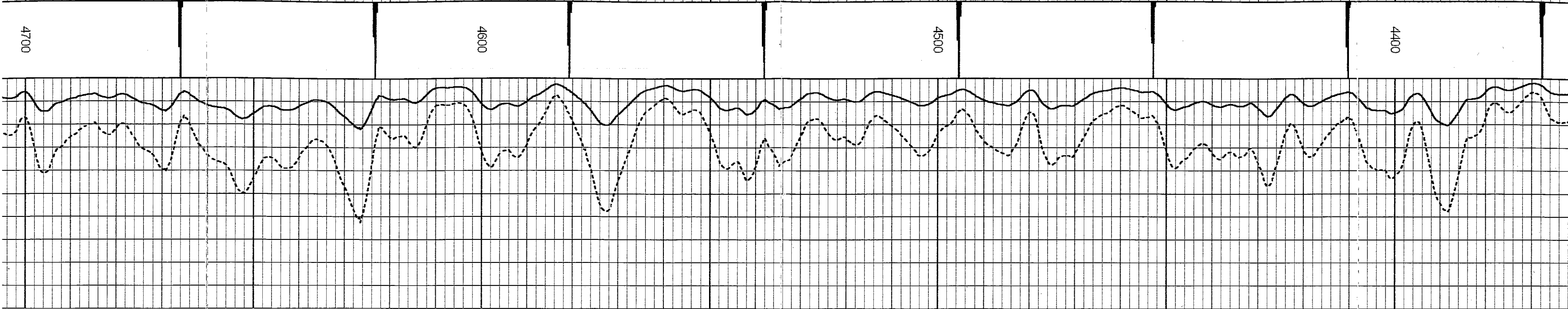
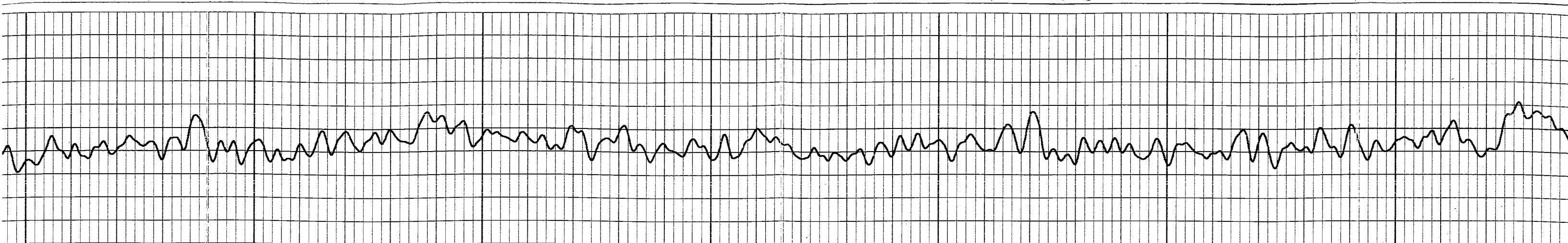


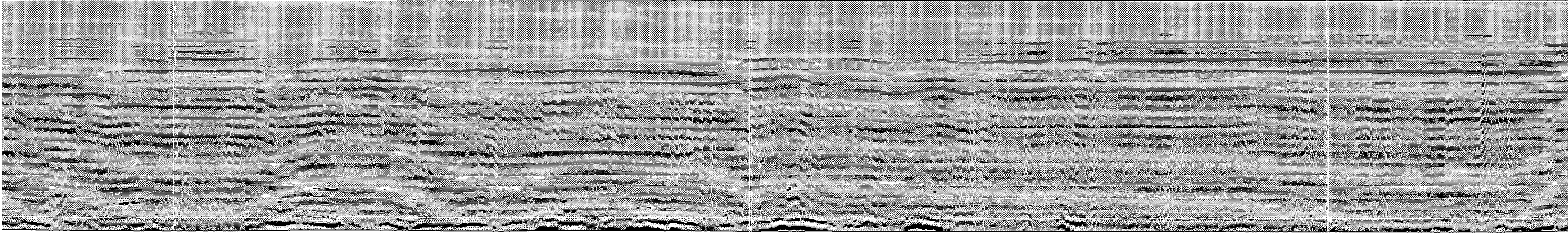
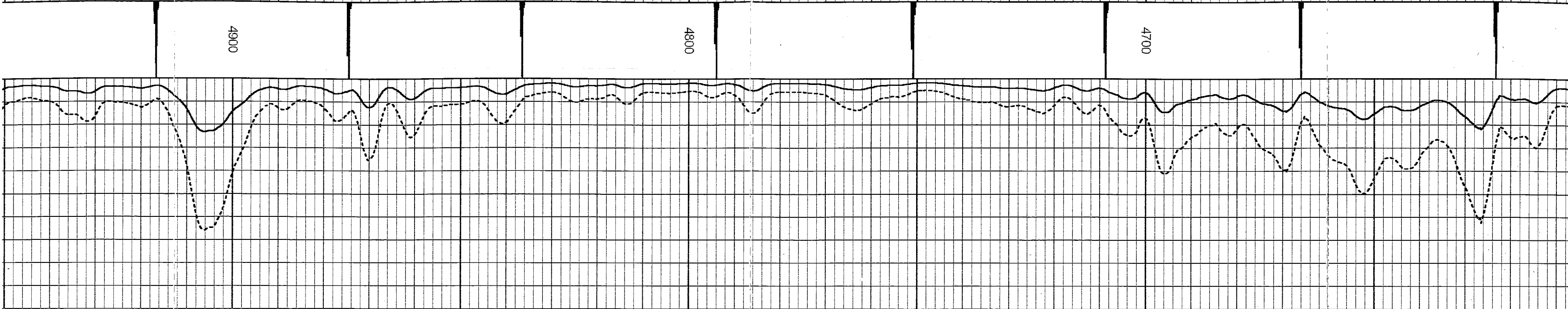
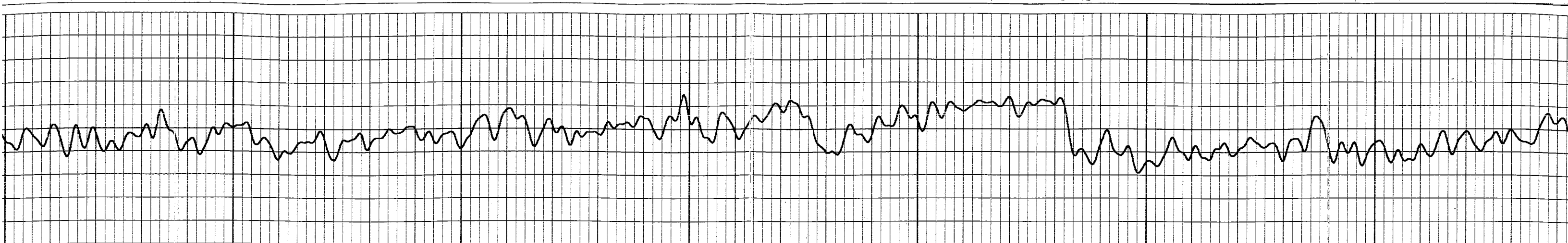








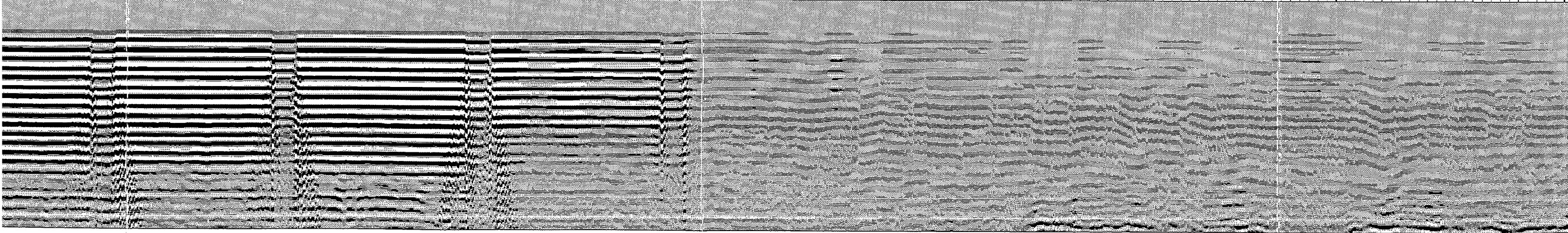
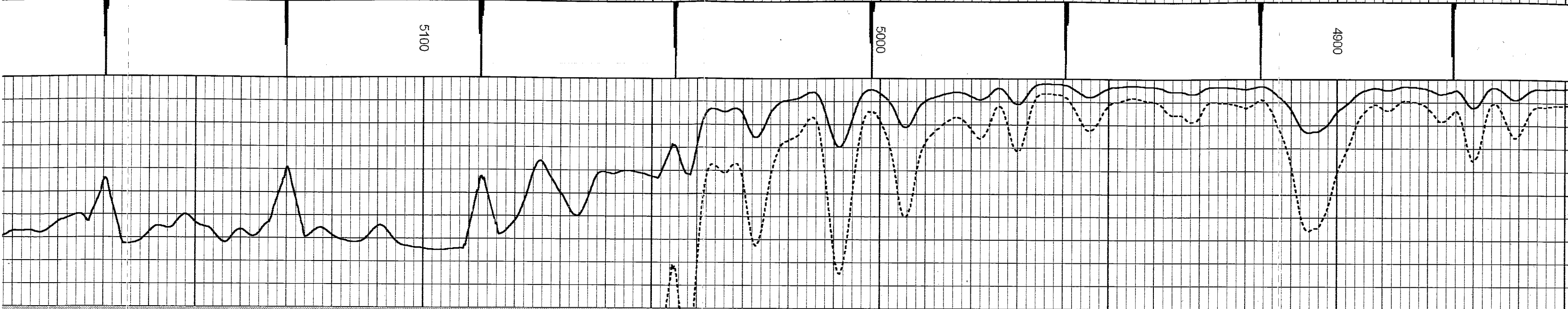
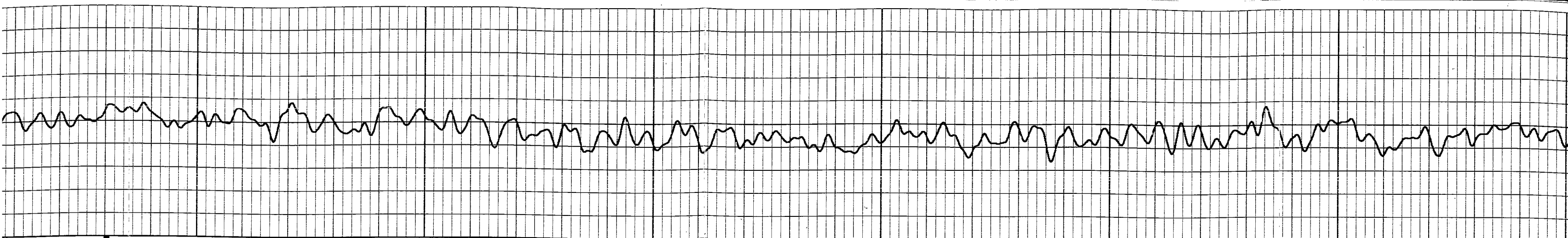


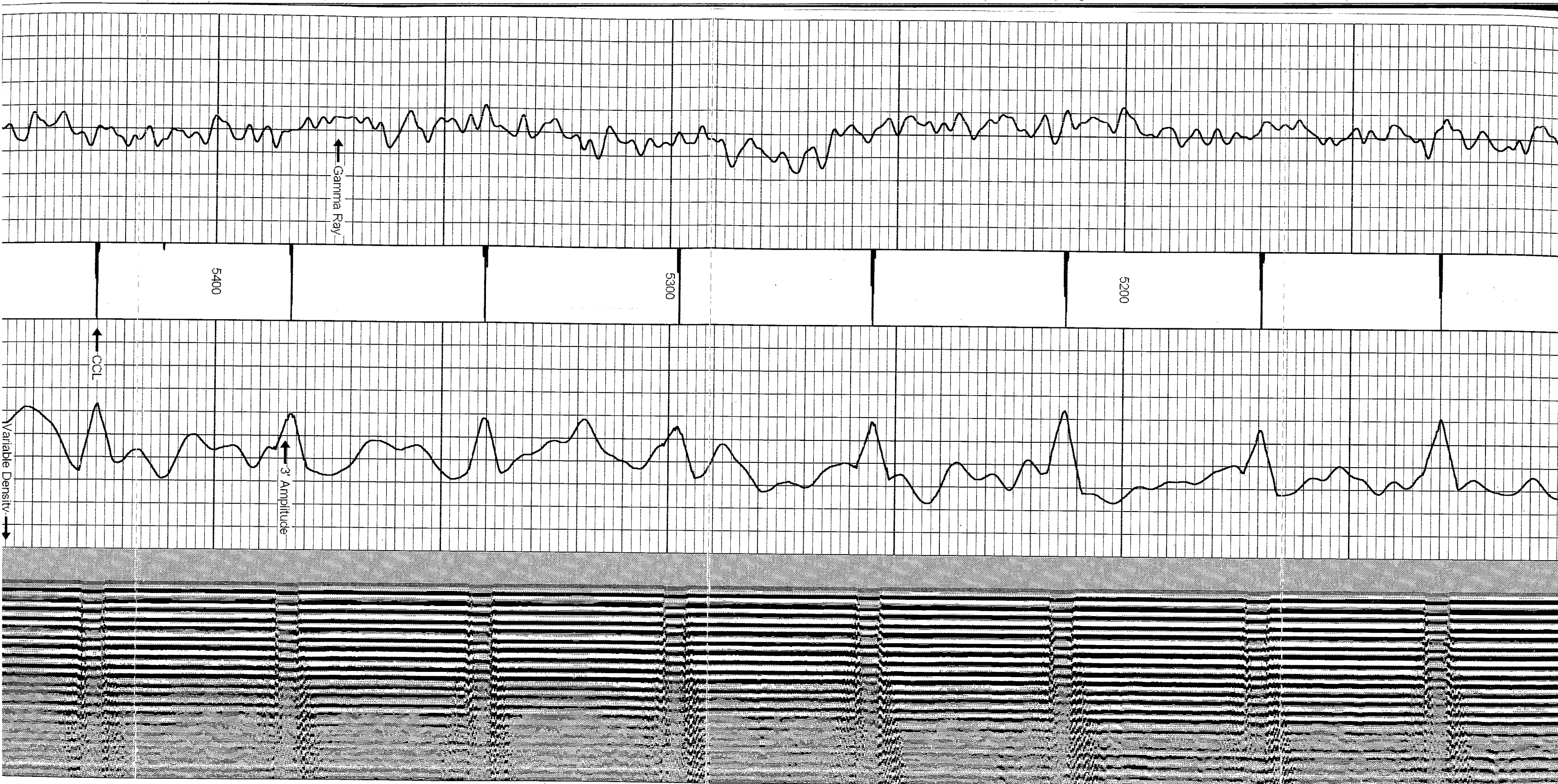


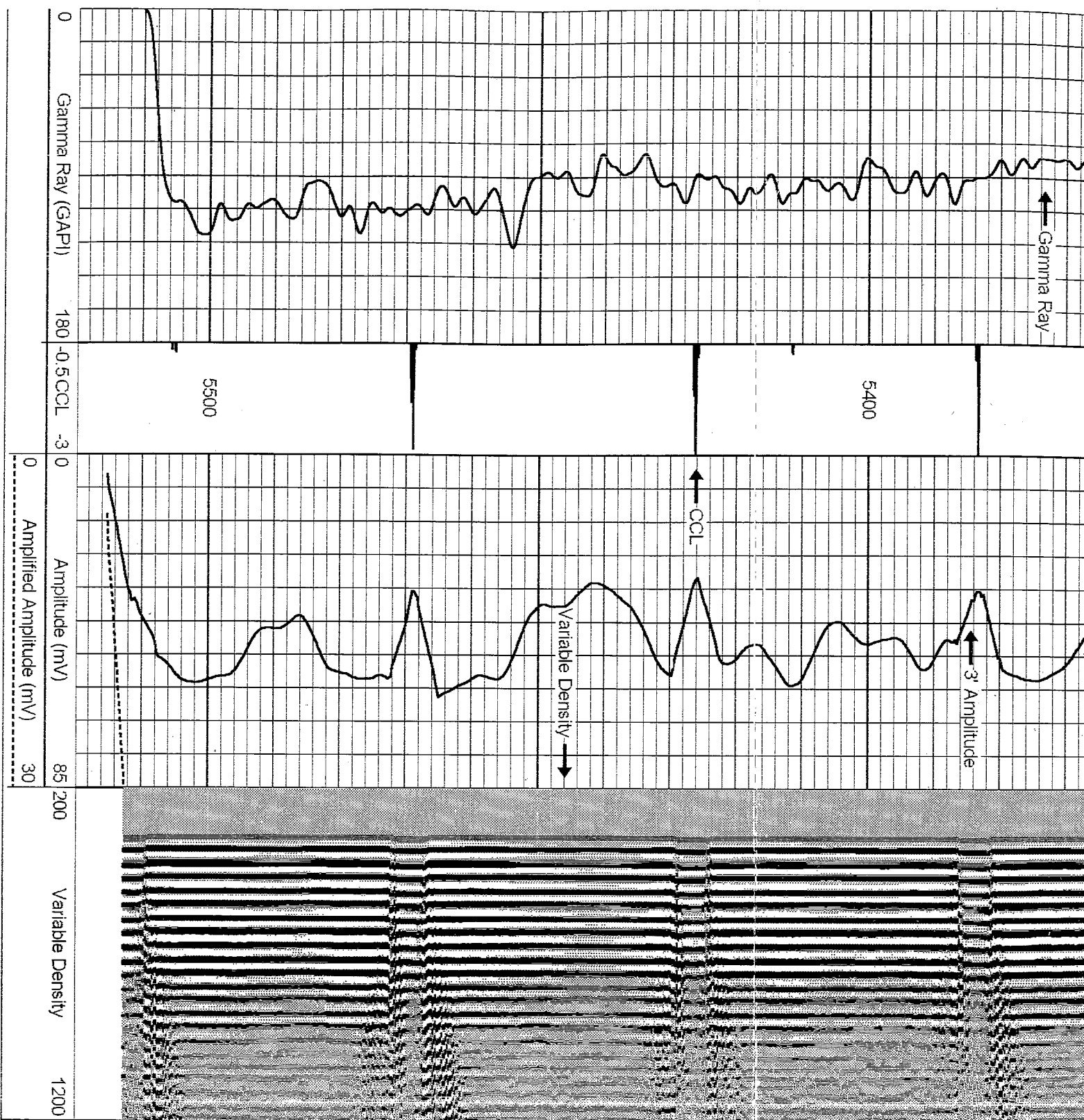
4900

4800

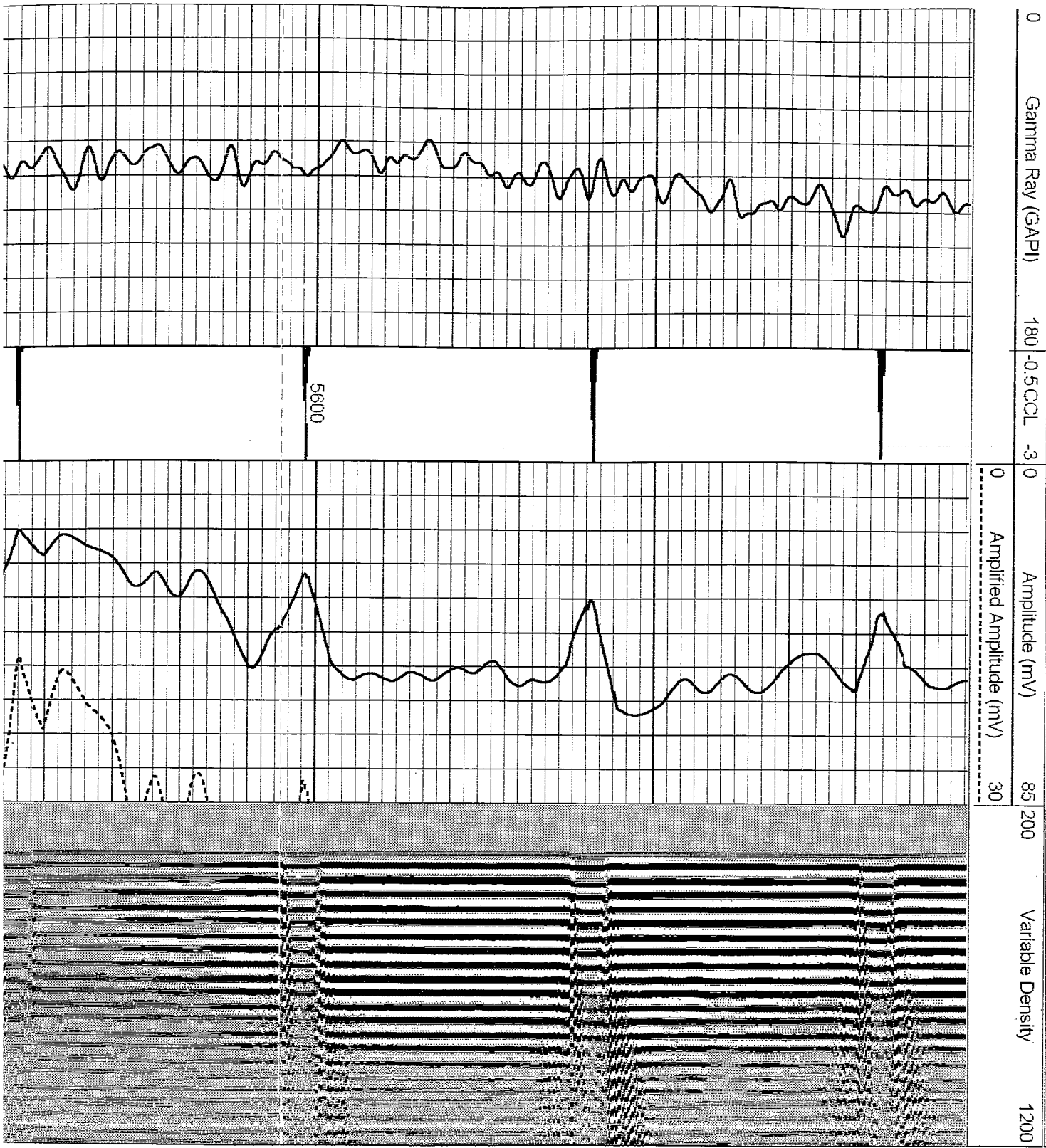
4700

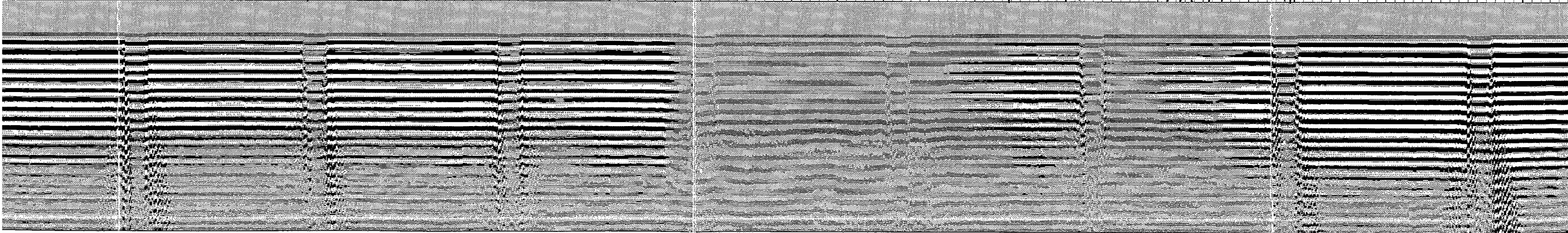
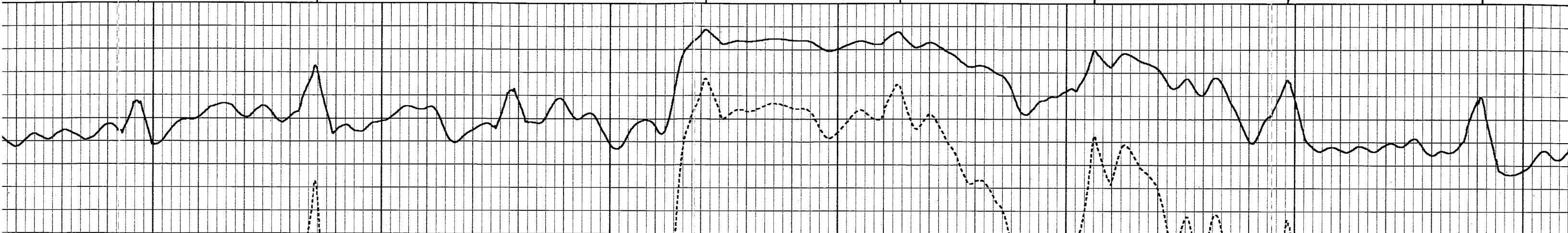
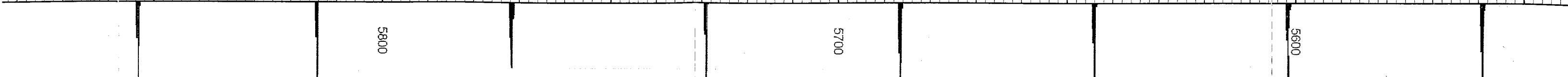
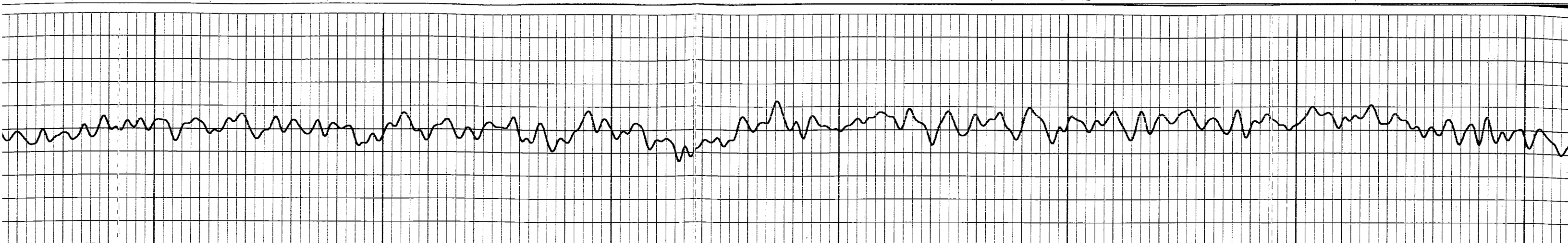




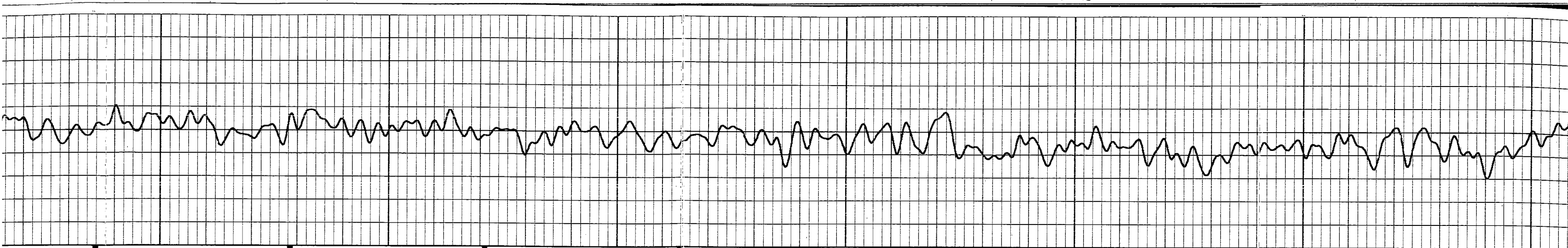


Database File: carmenisch2-32.db
Dataset Pathname: pass1
Presentation Format: cbix
Dataset Creation: Thu Apr 05 09:38:34 2007 by Log Warrior 7.0 STD Cas
Charted by: Depth in Feet scaled 1:240

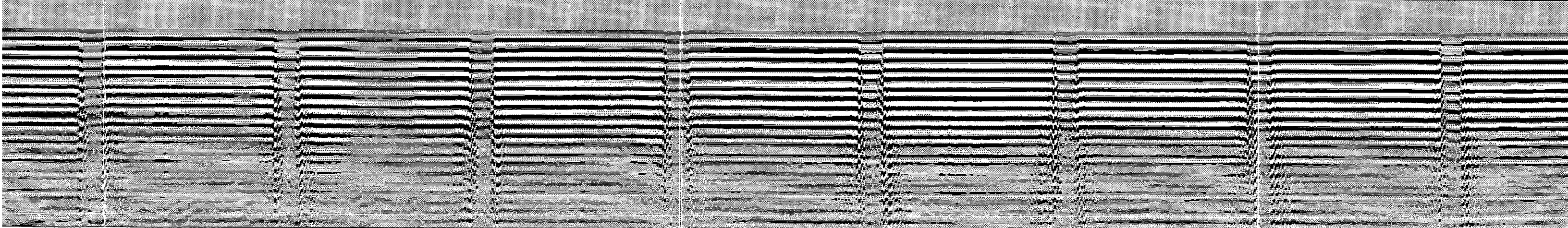
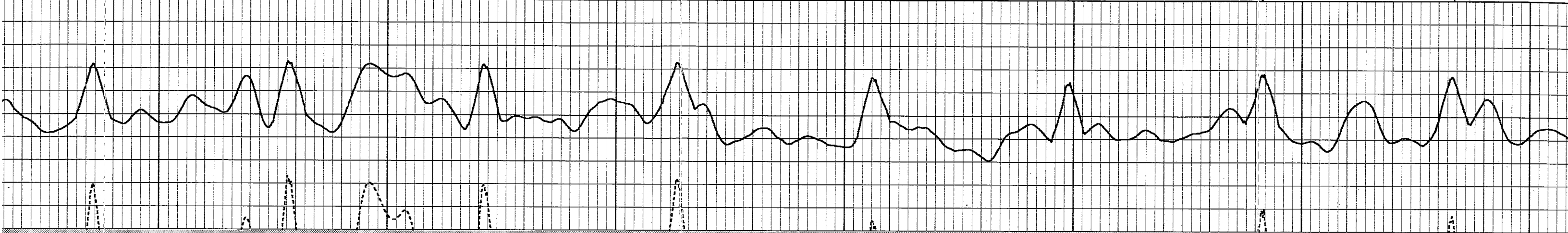


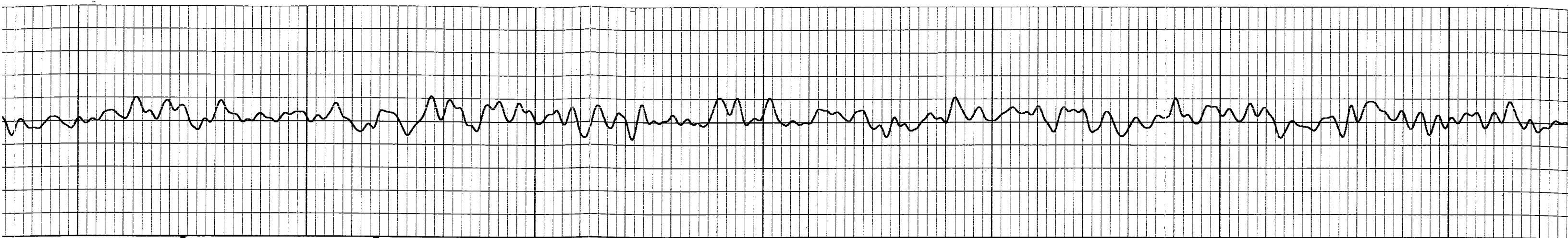




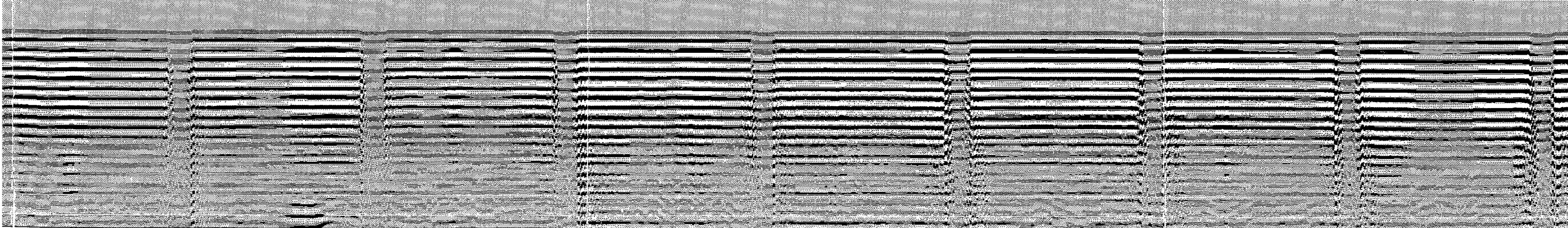
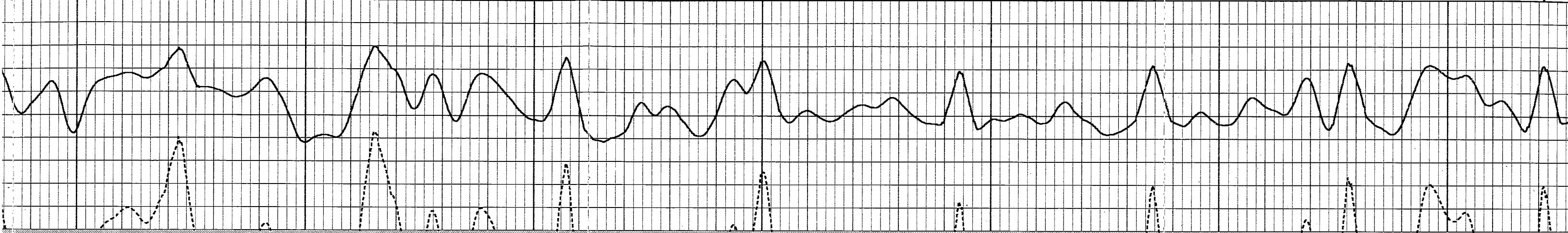


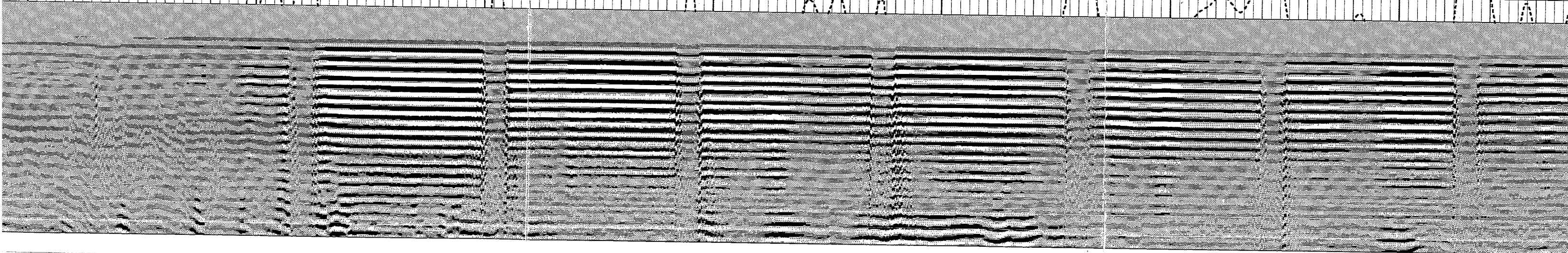
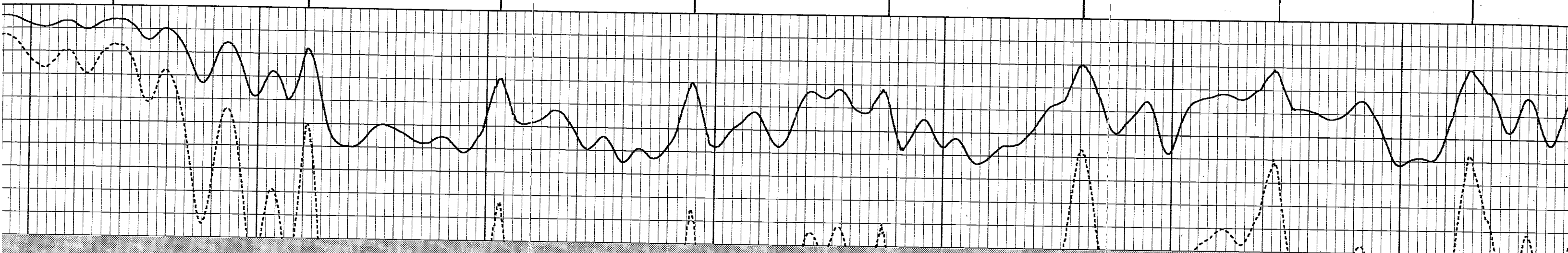
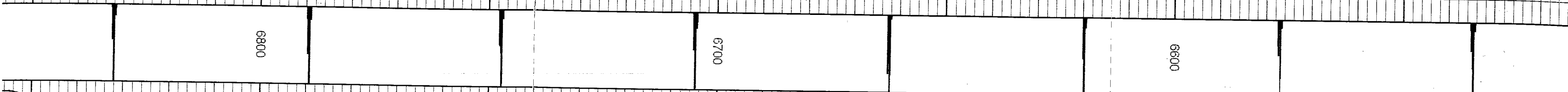
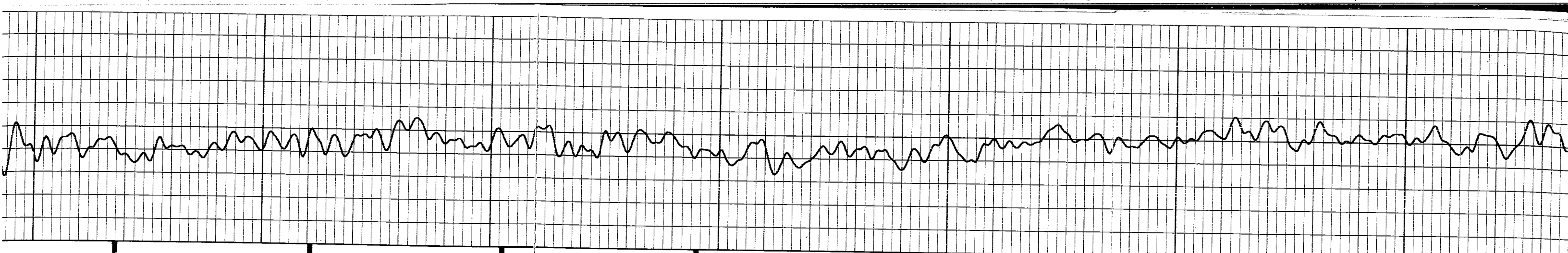
		6300		6200			6100	
--	--	------	--	------	--	--	------	--

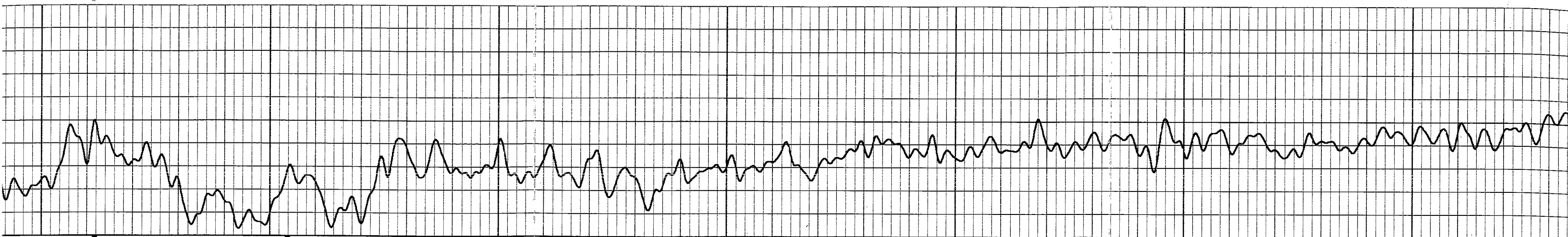




6600		6500			6400			6300	
------	--	------	--	--	------	--	--	------	--





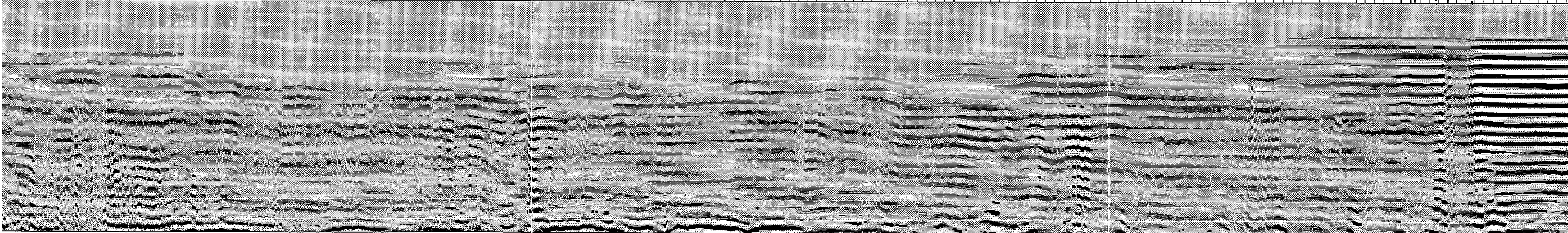
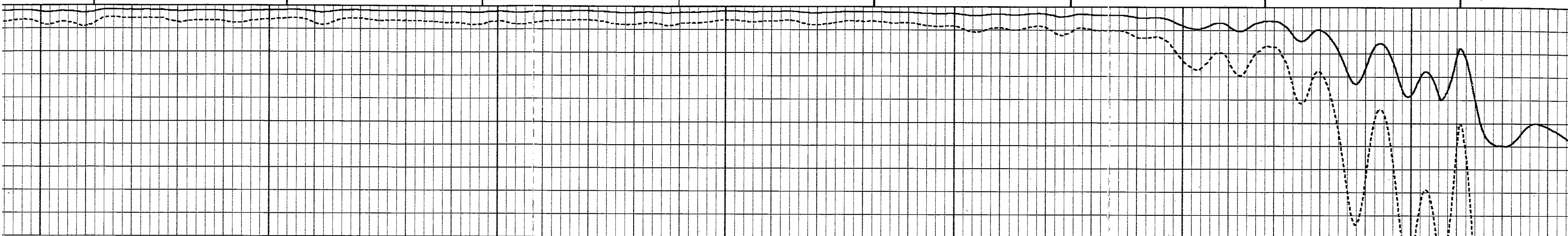


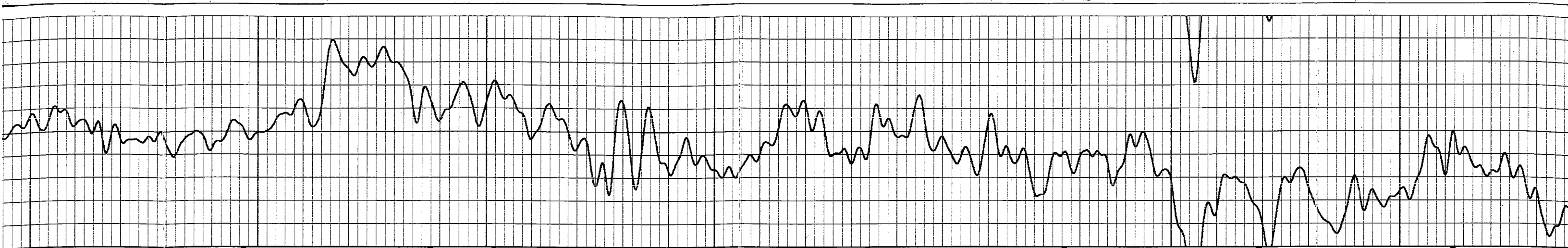
7100

7000

6900

6800





7400

Marker Joint

7300

7200

7100

