



PHOENIX SURVEYS, INC.

DUAL INDUCTION
GUARD LOG
GAMMA RAY

Company EnCana Energy Resources Inc.

Well Dinner 6-5-14

Field Wattenberg

County Weld State Colorado

Company
Well
Field
County
State/Prv

Location SHL: 1768' FSL & 860' FEL NE SE
BHL: 1983' FSL & 1327' FEL NE CNSE
Sec - 14, Twp - 4N, Rge - 66W

Permanent Datum
Log Measured From
Drilling Measured From

GL KB
KB

Elevation 4720

K B 4726
D.F. 4726
G.L. 4720

Other Services
Density
Neutron

Date January 11, 2005

Run Number 1

Depth Driller 7515

Depth Logger 7505

Bottom Logged Interval 7505

Top Log Interval Casing

Casing Driller 461

Casing Logger 461

Bit Size 7-7/8"

Type Fluid in Hole Chem-Gel

Density / Viscosity 9.6 / 61

pH / Fluid Loss 9.0 / 63

Source of Sample Flowline

Rm @ Meas. Temp 3.98 @ 63° F

Rmt @ Meas. Temp 3.40 @ 63° F

Rmc @ Meas. Temp 4.35 @ 63° F

Source of Rmt / Rmc Meas / Calc

Rm @ BHT 1.16 @ 217° F

Time Circulation Stopped 1800

Time Logger on Bottom 0030

Maximum Recorded Temperature 217° F

Equipment Number 4041

Location Brighton, CO

Recorded By Shaun Schuman

Witnessed By Dale Brousseau

<<< Fold Here >>>

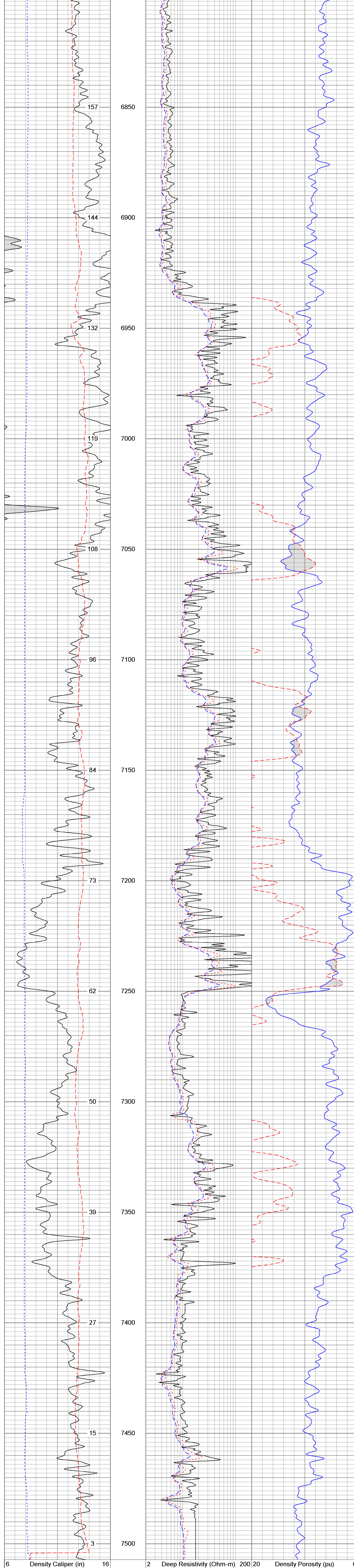
All interpretations are opinions based on inferences from electrical or other measurements and we cannot and do not guarantee the accuracy or correctness of any interpretation, and we shall not, except in the case of gross or willful negligence on our part, be liable or responsible for any loss, costs, damages, or expenses incurred or sustained by anyone resulting from any interpretation made by any of our officers, agents or employees. These interpretations are also subject to our general terms and conditions set out in our current Price Schedule.

Comments

Annular volume is calculated for 4.5" casing.
Caza Drilling Rig 55.
Thank you for using Phoenix Surveys.
API # 05-123-22408-00

Database File: 4819.db
Dataset Pathname: main
Presentation Format: PDC
Dataset Creation: Tue Jan 11 00:08:02 2005
Charted by: Depth in Feet scaled 1:240

6	Density Caliper (in)	16	2	Deep Resistivity (Ohm-m)	200	20	Density Porosity (pu)	0
0	Gamma Ray (GAPI)	200	2	Medium Resistivity (Ohm-m)	200	20	Neutron Porosity (pu)	0
0	SP (mV)	200	2	Shallow Resistivity (Ohm-m)	200			



6	Density Caliper (in)	16	2	Deep Resistivity (Ohm-m)	200	20	Density Porosity (pu)	0
0	Gamma Ray (GAPI)	200	2	Medium Resistivity (Ohm-m)	200	20	Neutron Porosity (pu)	0
0	SP (mV)	200	2	Shallow Resistivity (Ohm-m)	200			