

Patterson

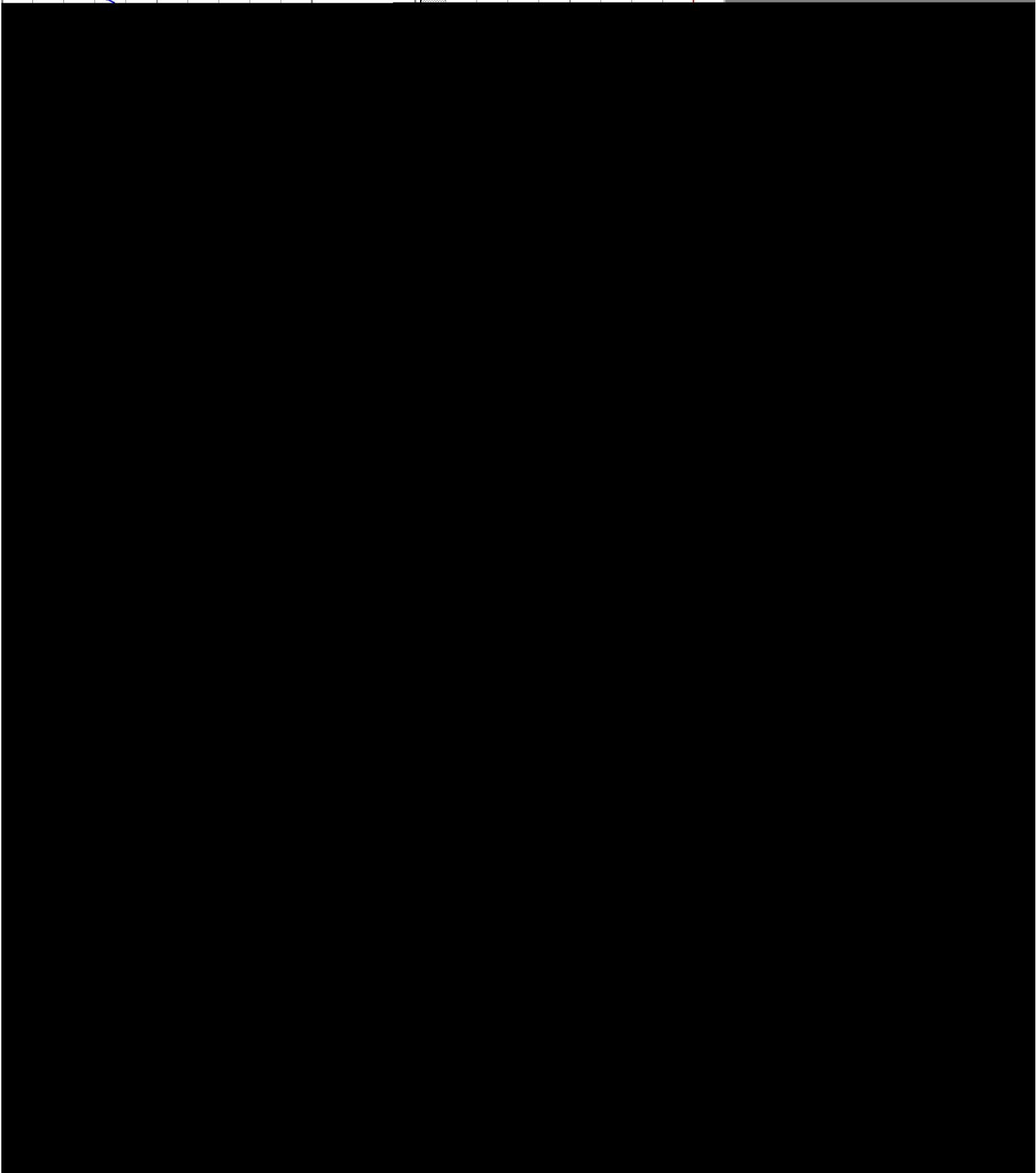
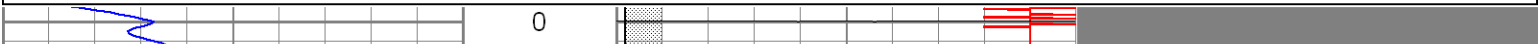
CompanyXTO Energy Inc.
WellGolden Eagle 28-14
FieldPurgatorie River
CountyLas Animas
StateCO

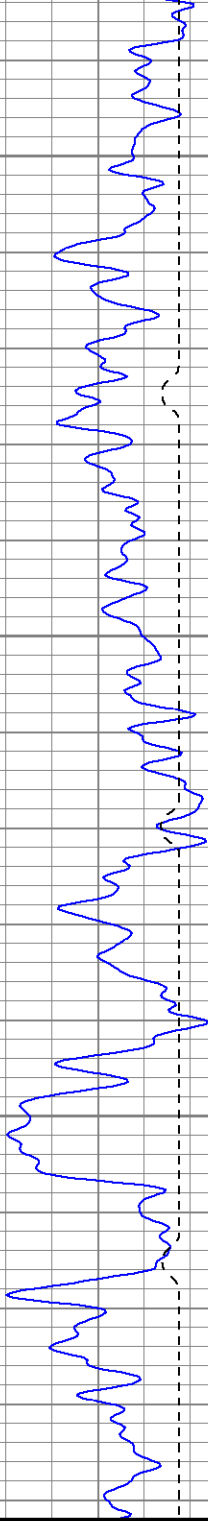
Company XTO
Well Gol
Field Pur
County Las
Location:
SEC 2
Permanent Datum
Log Measured From
Drilling Measured From

| Date | |
|------------------------|---------|
| Run Number | |
| Depth Driller | |
| Depth Logger | |
| Bottom Logged Interval | |
| Top Log Interval | |
| Open Hole Size | |
| Type Fluid | |
| Density / Viscosity | |
| Max. Recorded Temp. | |
| Estimated Cement Top | |
| Time Well Ready | |
| Time Logger on Bottom | |
| Equipment Number | |
| Location | |
| Recorded By | |
| Witnessed By | |
| Borehole Record | |
| Run Number | BitFrom |
| | |
| | |
| | |
| | |
| Casing Record | Size |
| Surface String | 8 5/8" |
| Prot. String | |
| Production String | 5 1/2" |
| Liner | |

Database File: ge28-14b8406.db
Dataset Pathname: pass2.2
Presentation Format: cblrt
Dataset Creation: Fri Aug 04 08:36:35 2006 by Calc Warrior 7.0 STD Cas
Charted by: Depth in Feet scaled 1:240

| | | | | | | | | |
|-----|------------|-----|-----|-----------|------|-----|------------------|------|
| 0 | GR (GAPI) | 200 | 0 | AMP3 (mV) | 100 | 200 | Variable Density | 1200 |
| 400 | TT3 (usec) | 200 | 18 | CCL | -2 | | | |
| | | | 200 | CBL5 | 1200 | | | |

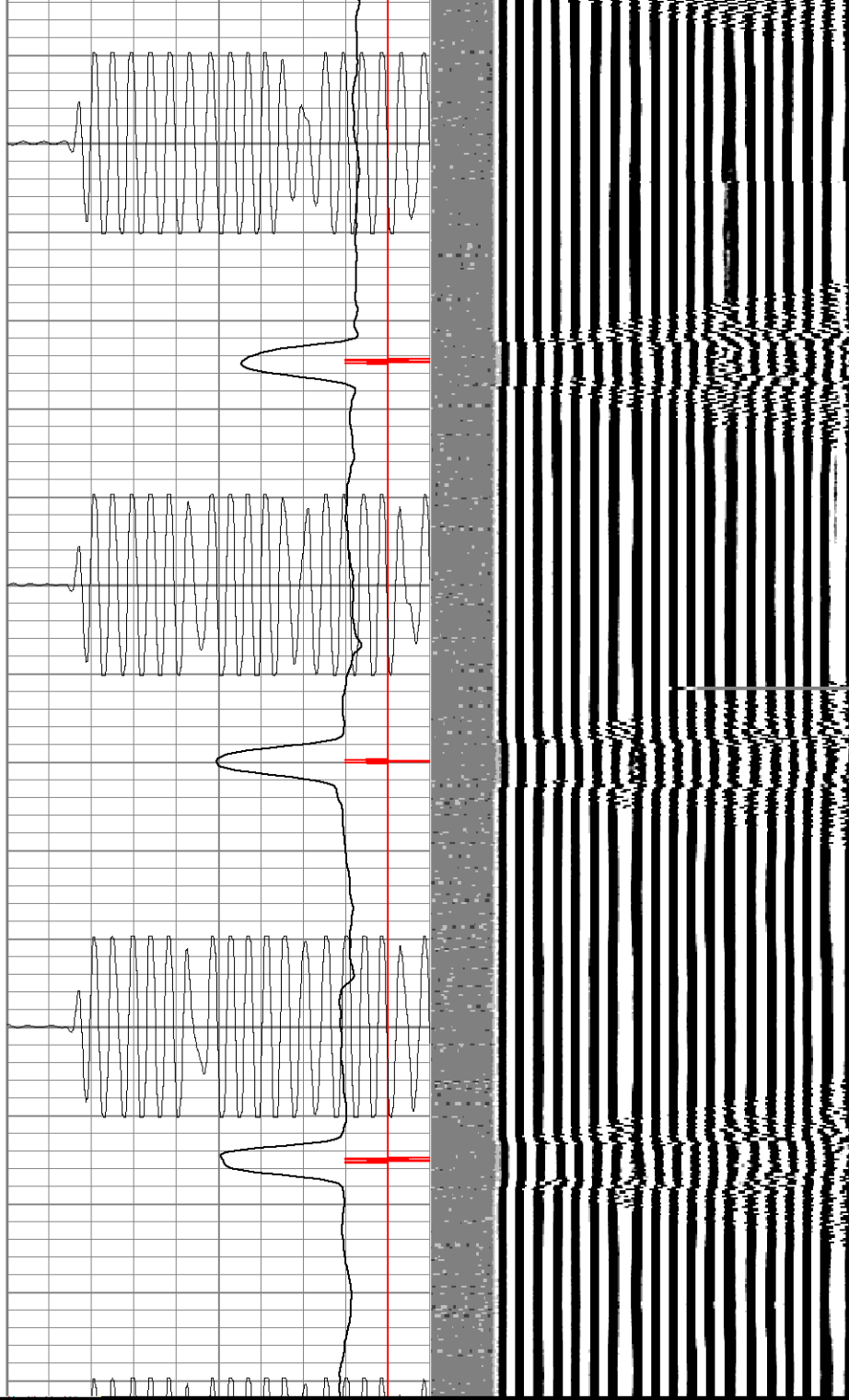


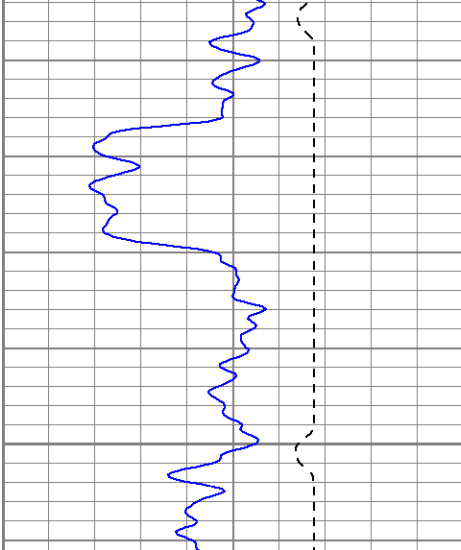


200

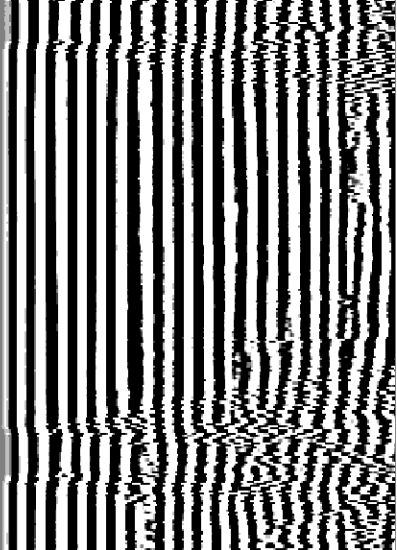
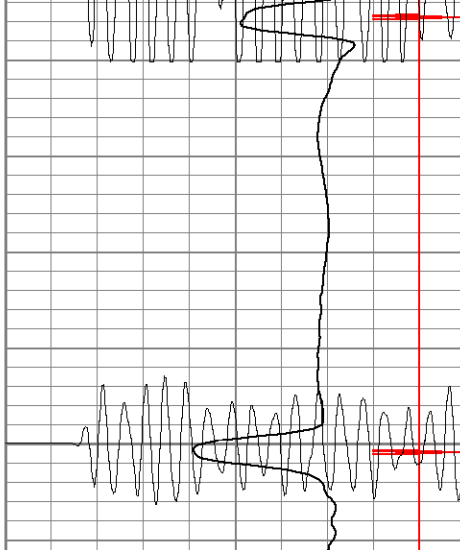
250

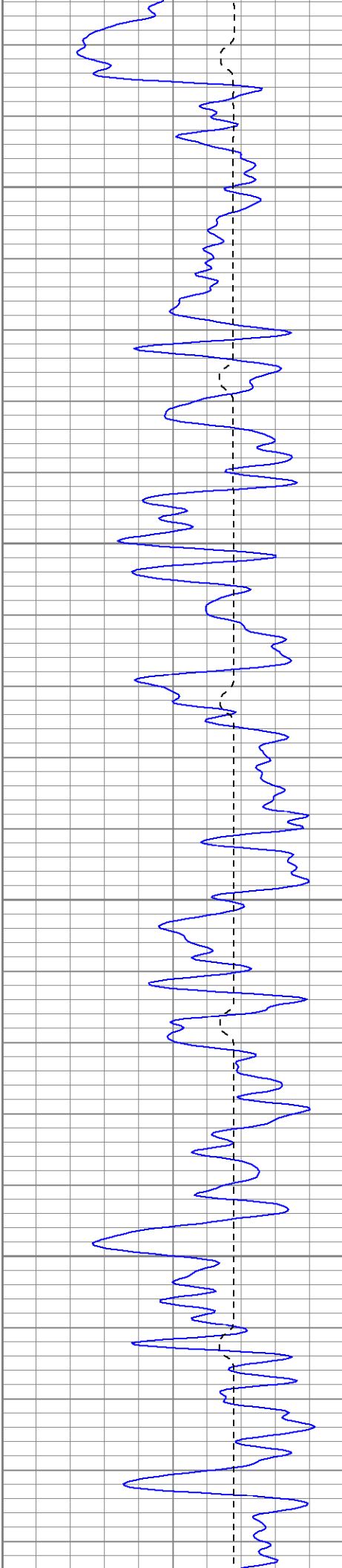
300





450



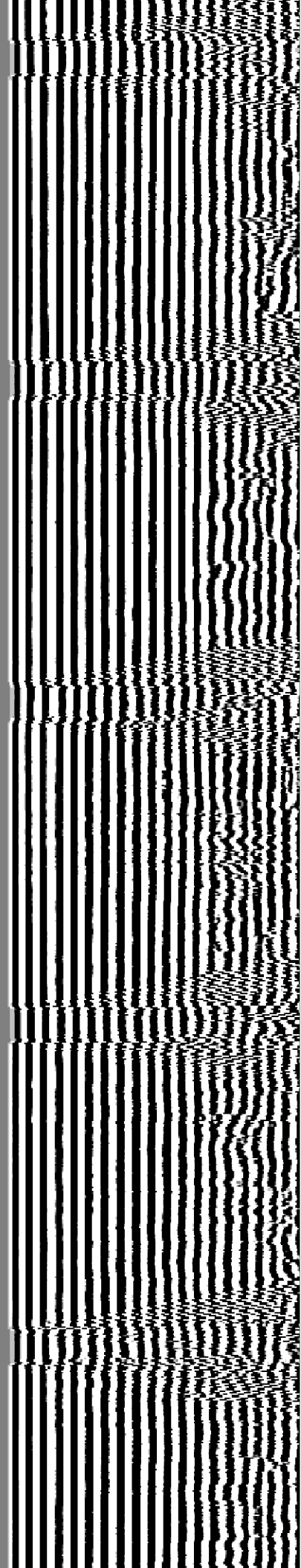
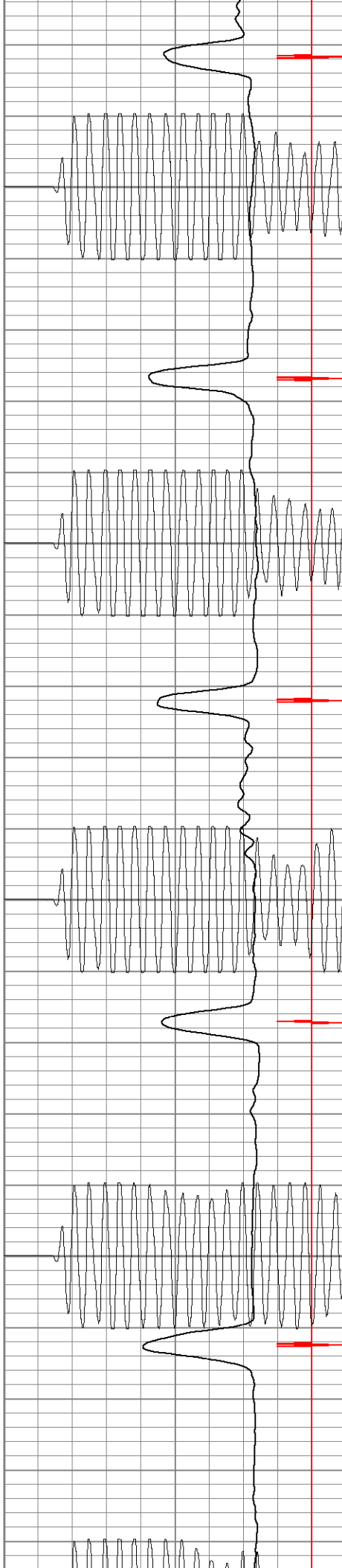


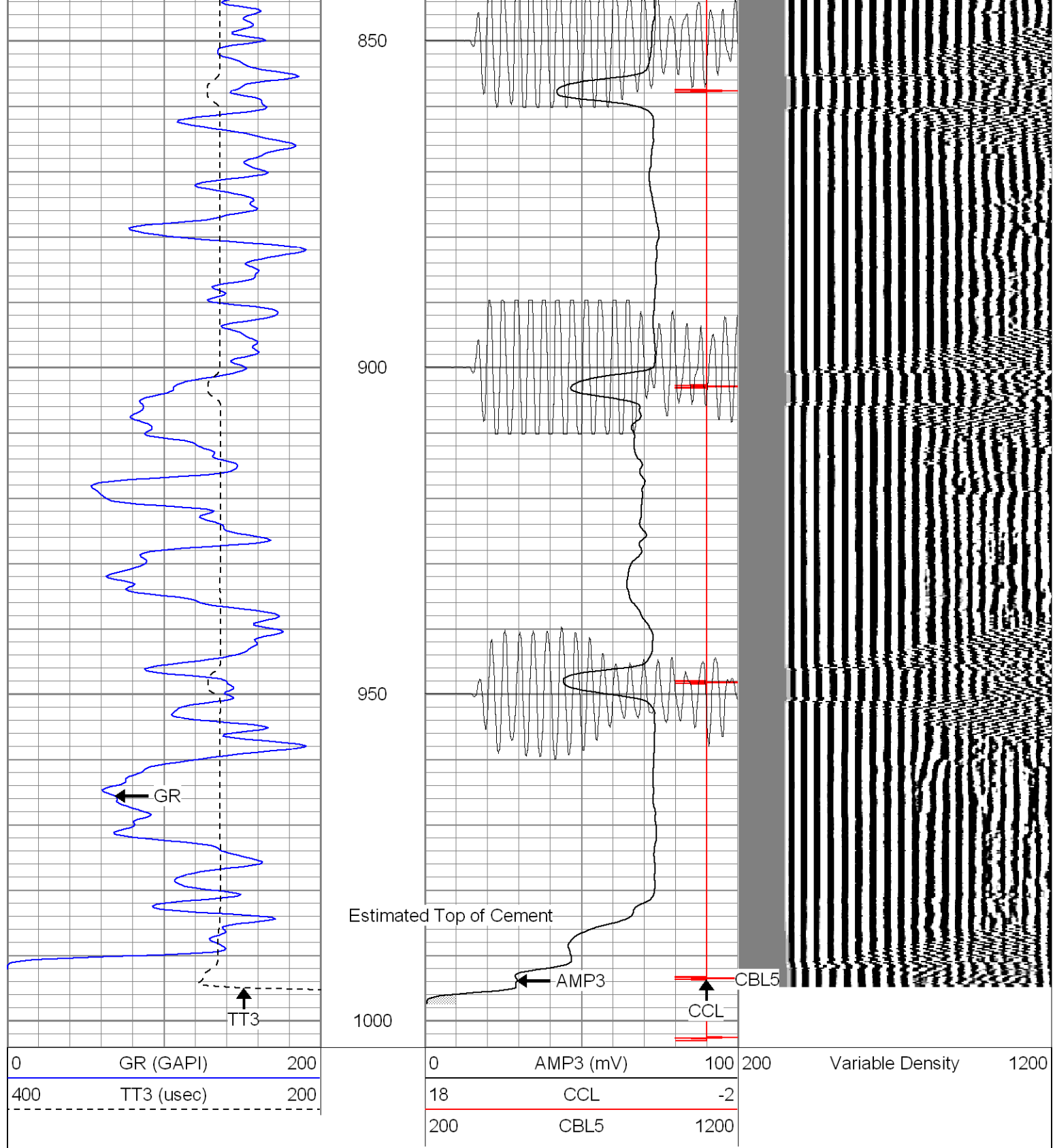
650

700

750

800





Patterson

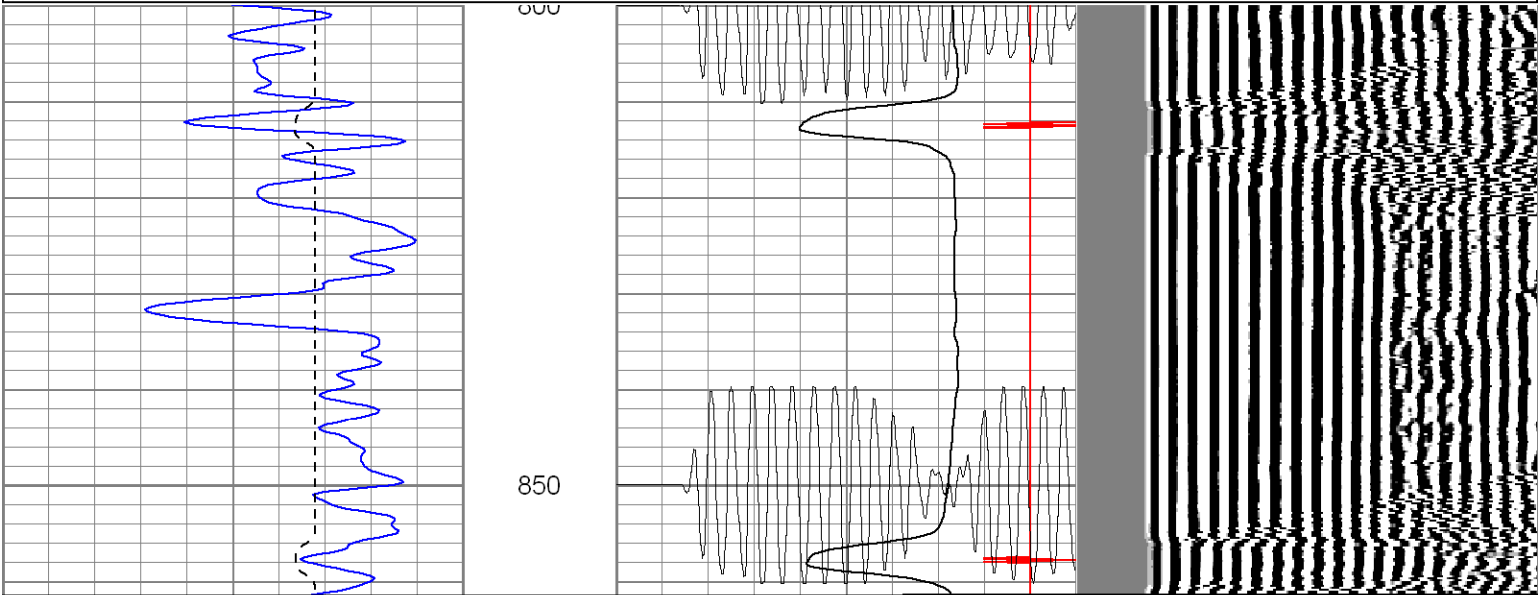
Repeat Section

Database File: ge28-14b8406.db
Dataset Pathname: pass1.2
Presentation Format: cblrt
Dataset Creation: Fri Aug 04 08:03:57 2006 by Calc Warrior 7.0 STD Cas
Charted by: Depth in Feet scaled 1:240

| | | |
|-----|------------|-----|
| 0 | GR (GAPI) | 200 |
| 400 | TT3 (usec) | 200 |
| | | |

| | | |
|-----|-----------|------|
| 0 | AMP3 (mV) | 100 |
| 18 | CCL | -2 |
| 200 | CBL5 | 1200 |

| | | |
|-----|------------------|------|
| 200 | Variable Density | 1200 |
|-----|------------------|------|



| | | | | | | | | |
|-----|------------|-----|-----|-----------|------|-----|------------------|------|
| 0 | GR (GAPI) | 200 | 0 | AMP3 (mV) | 100 | 200 | Variable Density | 1200 |
| 400 | TT3 (usec) | 200 | 18 | CCL | -2 | | | |
| | | | 200 | CBL5 | 1200 | | | |

| Cement Bond Log Calibration Report | | | | | | | | |
|------------------------------------|--------------------------|----------|------------|--|--|----|--|--|
| Serial Number: | Titan5 | | | | | | | |
| Tool Model: | 2 | | | | | | | |
| Performed: | Fri Aug 04 07:30:41 2006 | | | | | | | |
| Depth: | 0 | ft | | | | | | |
| Casing Diameter: | 0 | in | | | | | | |
| | 3' Spacing | | 5' Spacing | | | | | |
| Signal Zero: | 0 | | 0 | | | mV | | |
| Calibrated Amplitude: | 85 | | 85 | | | mV | | |
| Reading at Signal Zero: | -0.01 | | 0.00866699 | | | V | | |
| Reading in Free Pipe: | 1.1 | | 1.4 | | | V | | |
| Gain: | 76.5766 | | 61.0925 | | | | | |
| Offset: | 0.765766 | | -0.529488 | | | | | |
| Gamma Ray Calibration Report | | | | | | | | |
| Serial Number: | Titan5 | | | | | | | |
| Tool Model: | T2 | | | | | | | |
| Performed: | Fri Aug 04 07:30:47 2006 | | | | | | | |
| Calibrator Value: | 1.0 | GAPI | | | | | | |
| Background Reading: | 0.0 | cps | | | | | | |
| Calibrator Reading: | 1.0 | cps | | | | | | |
| Sensitivity: | 1.2000 | GAPI/cps | | | | | | |