

Patterson

**CEMENT BOND
LOG**

Company XTO Energy, Inc.
Well Golden Eagle 20-11
Field Purgatorie River
County Las Animas State Colorado

Location: API # :
2119' FSL & 2197' FWL
SEC 20 TWP 33S RGE 67W
Permanent Datum Ground Level Elevation 7752'
Log Measured From Ground Level
Drilling Measured From Ground Level
Other Services
K.B. -----
D.F. -----
G.L. 7752'

Company XTO Energy, Inc.
Well Golden Eagle 20-11
Field Purgatorie River
County Las Animas
State Colorado

Date 9-26-06

Run Number	One	
Depth Driller	2494'	
Depth Logger	2370'	
Bottom Logged Interval	2368'	
Top Log Interval	Surface	
Open Hole Size	7 7/8"	
Type Fluid	Water	
Density / Viscosity	////	
Max. Recorded Temp.	122 DEG F	
Estimated Cement Top	58'	
Time Well Ready	Portable Mast	
Time Logger on Bottom	9:05 A.M.	
Equipment Number	T096	
Location	Trinidad	
Recorded By	S. Allen	
Witnessed By	Mr. Don Johnson	

Borehole Record			Tubing Record				
Run Number	Bit	From	To	Size	Weight	From	To

Casing Record	Size	Wgt/Ft	Top	Bottom
Surface String	8 5/8"		00	1044'
Prot. String				
Production String	5 1/2"		00	N/A
Liner				

<<< Fold Here >>>

All interpretations are opinions based on inferences from electrical or other measurements and we cannot and do not guarantee the accuracy or correctness of any interpretation, and we shall not, except in the case of gross or willful negligence on our part, be liable or responsible for any loss, costs, damages, or expenses incurred or sustained by anyone resulting from any interpretation made by any of our officers, agents or employees. These interpretations are also subject to our general terms and conditions set out in our current Price Schedule.

Comments

Cement has had 37 Hours to Cure Since Pumping was Completed.

Well Directions:

4 Miles West of Weston on Hwy 12(Next to Carl Chavez Place)-Turn Right-Follow Road to "T"-
Turn Right-Follow Road to Compressor-Drive on Right Side of Compressor-1st Right-
At "Y" Stay Left-Follow Road to Location.

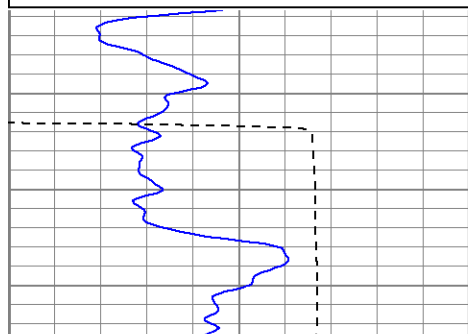
Patterson

Main Pass

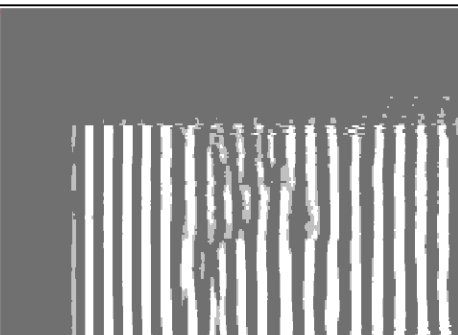
Database File: c:\warrior\data\cto\ge2011-092606b.db
Dataset Pathname: pass2
Presentation Format: cblrt
Dataset Creation: Tue Sep 26 09:13:25 2006 by Log Warrior 7.0 STD Ope
Charted by: Depth in Feet scaled 1:240

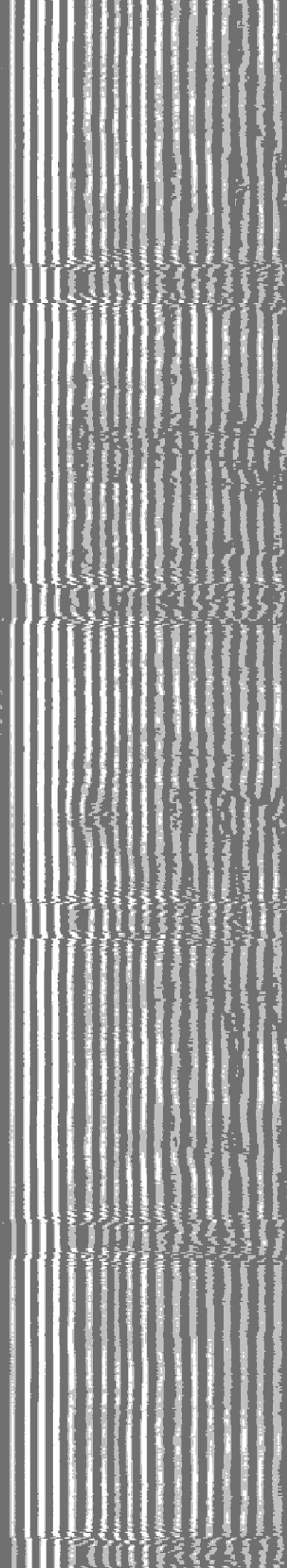
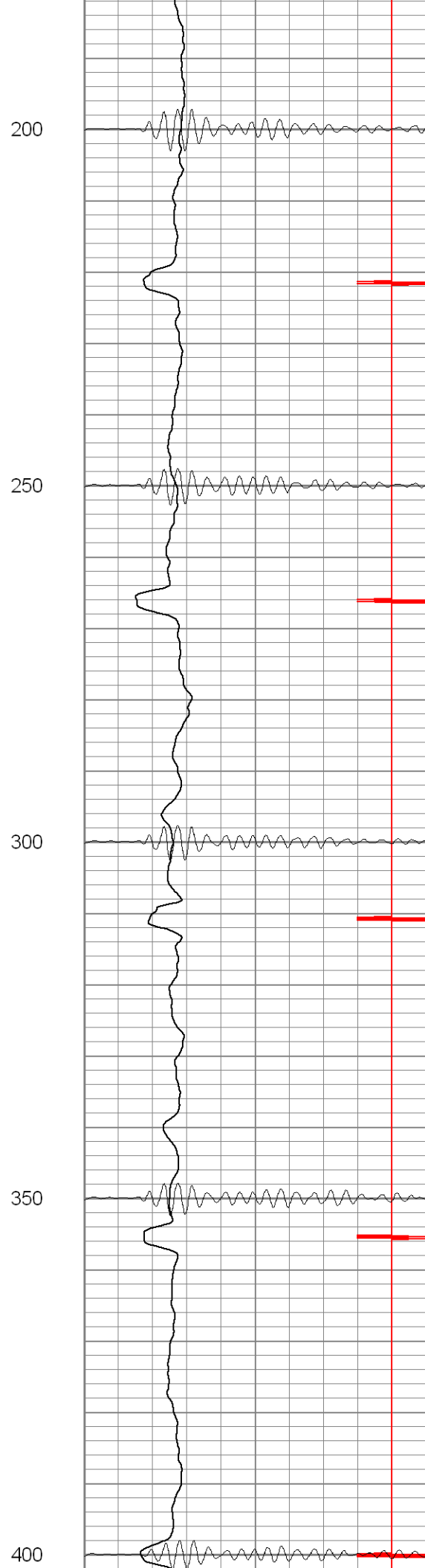
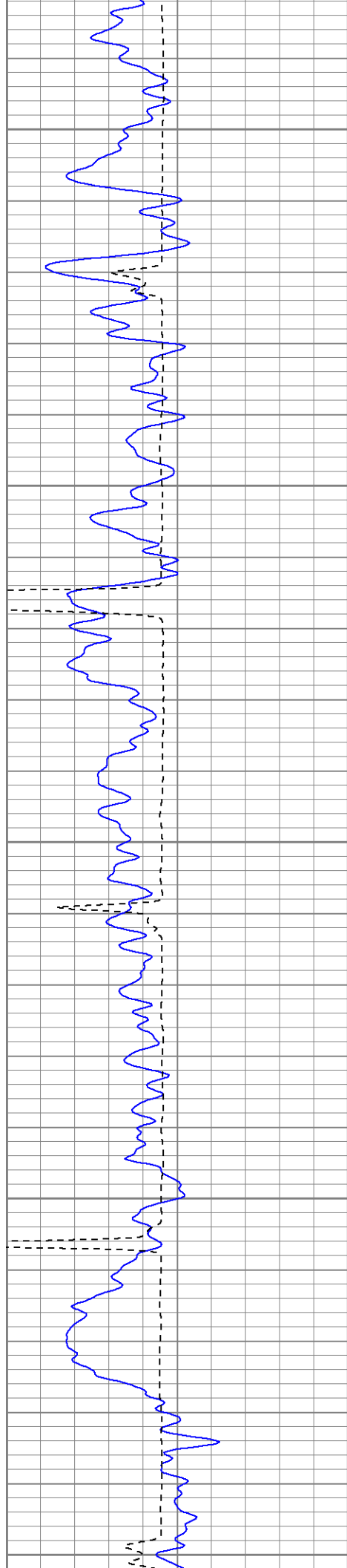
0	GR (GAPI)	200
400	TT3 (usec)	200
<hr/>		
200	GR (GAPI)	400

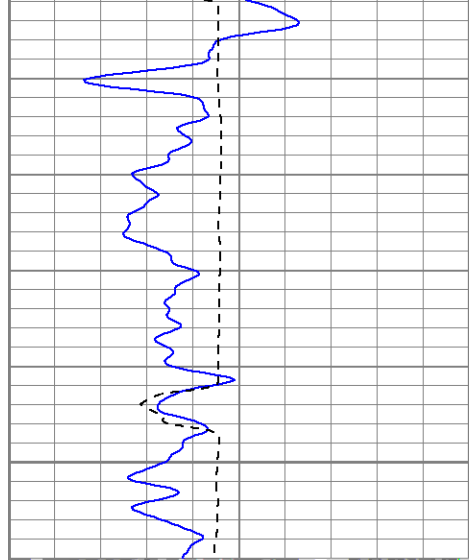
0	Amplitude (mV)	100
18	CCL	-2
<hr/>		
200	CBL5	1200



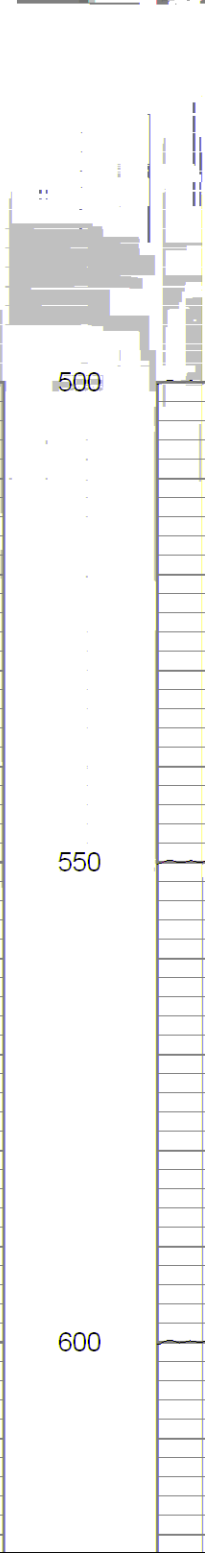
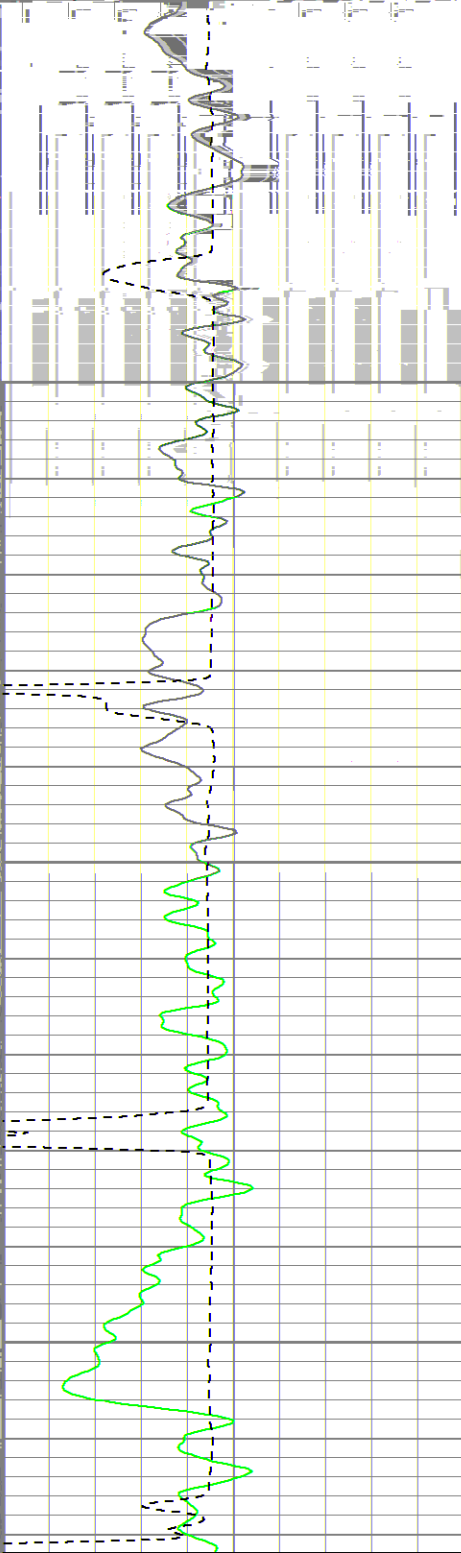
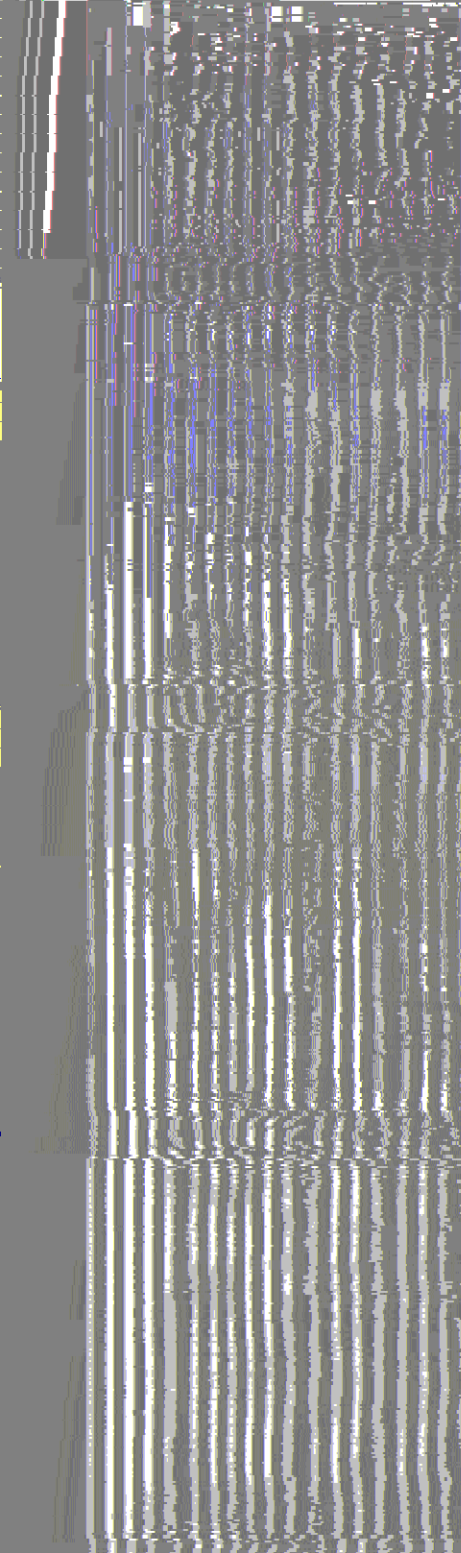
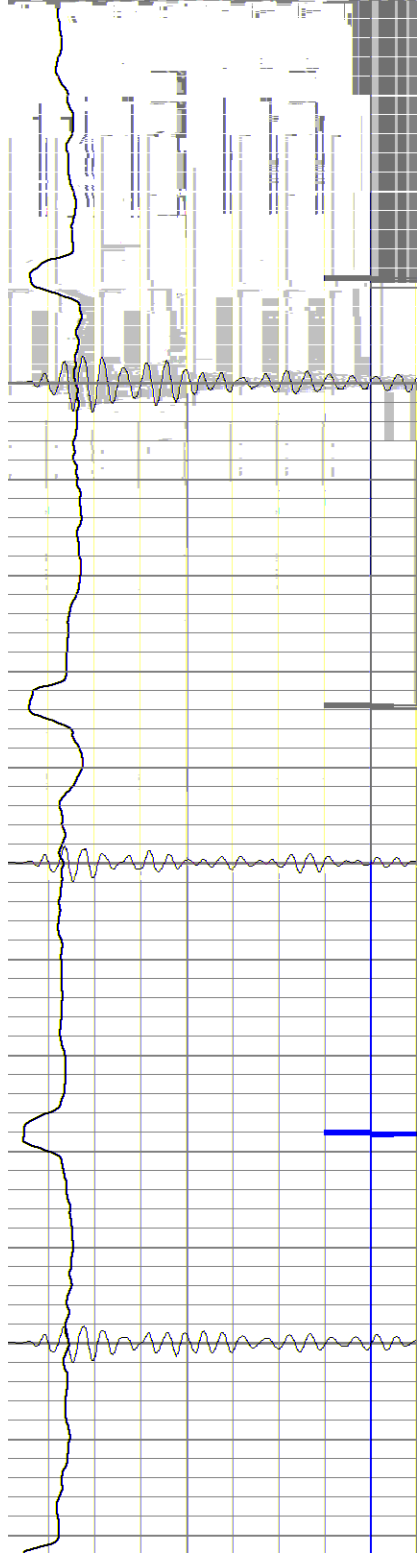
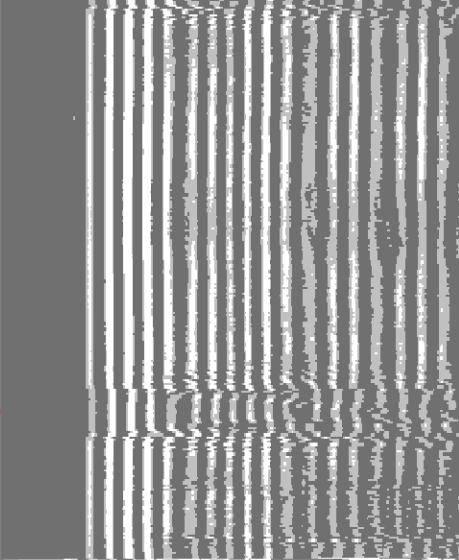
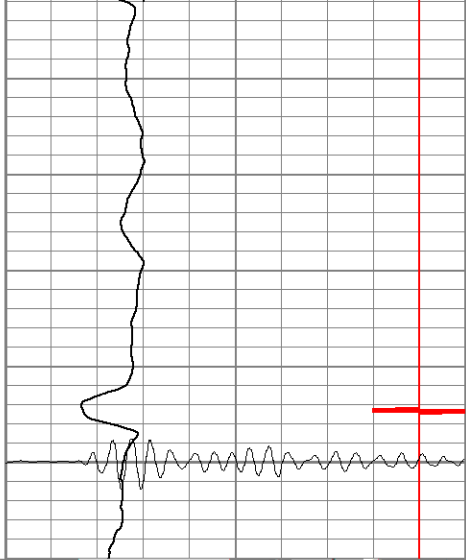
Fluid Level







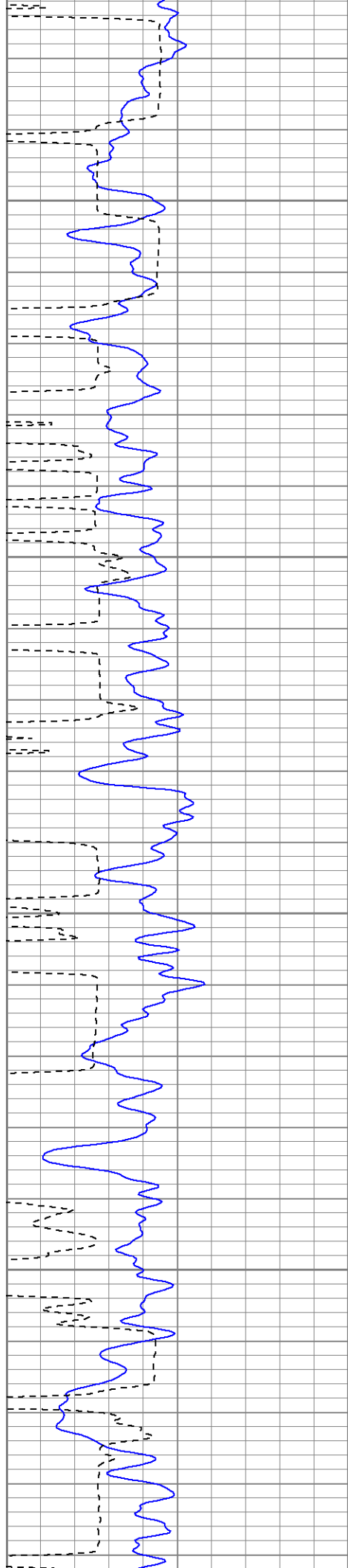
450



500

550

600

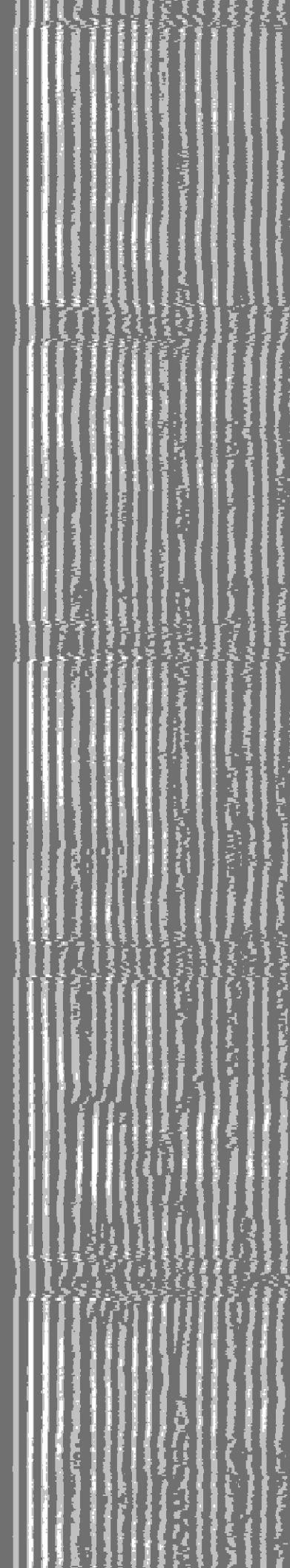
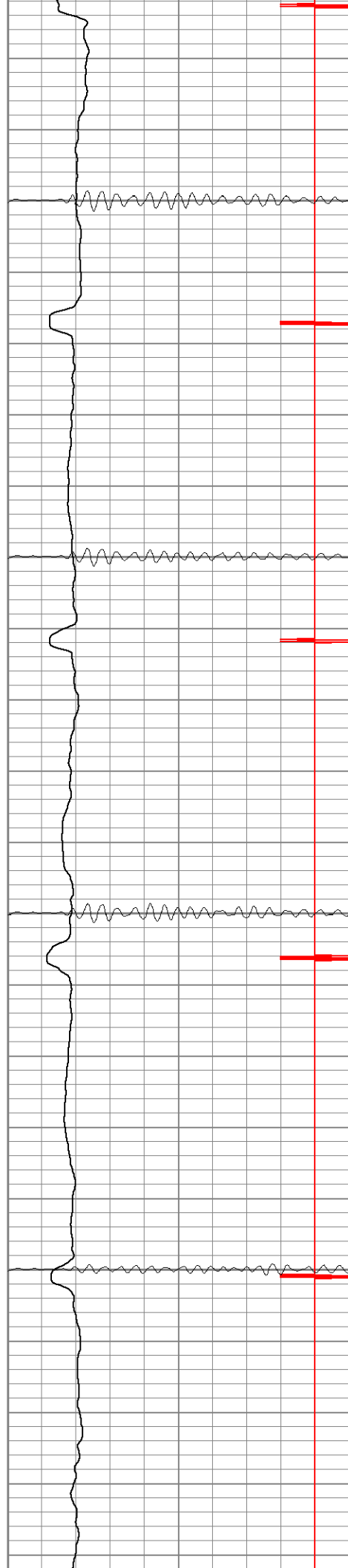


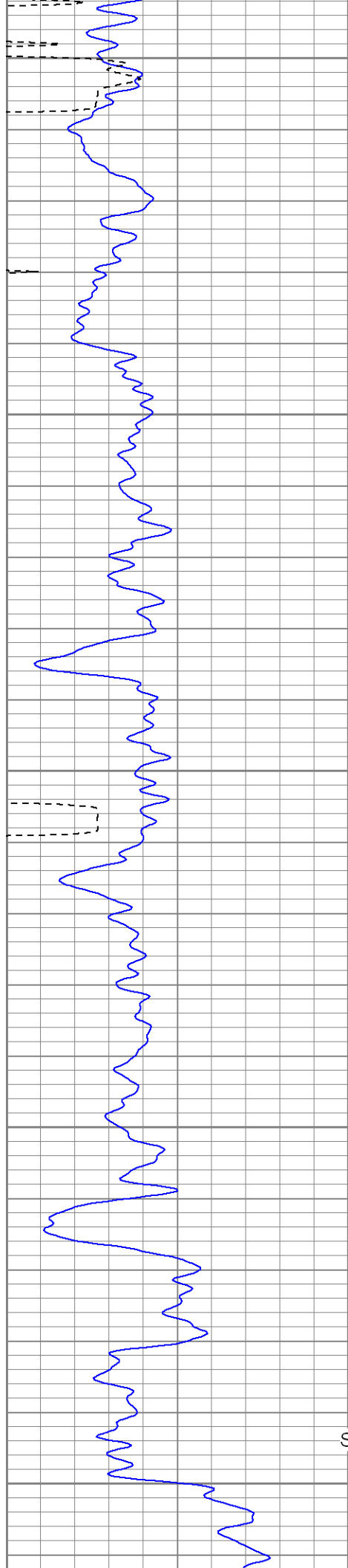
650

700

750

800





850

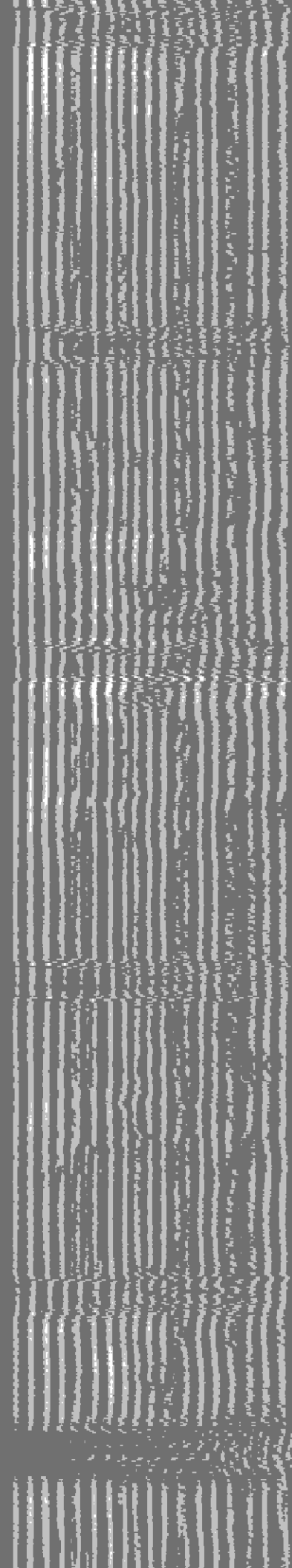
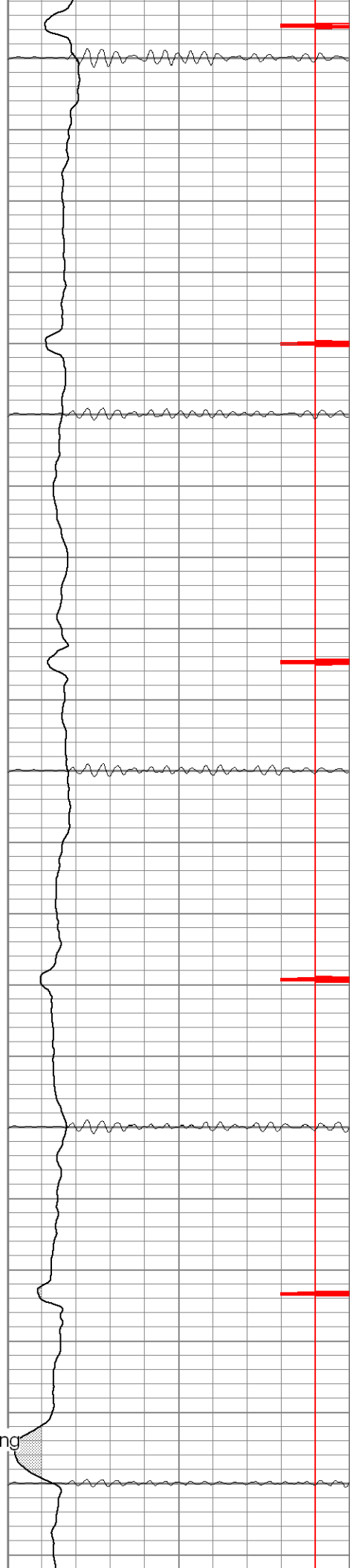
900

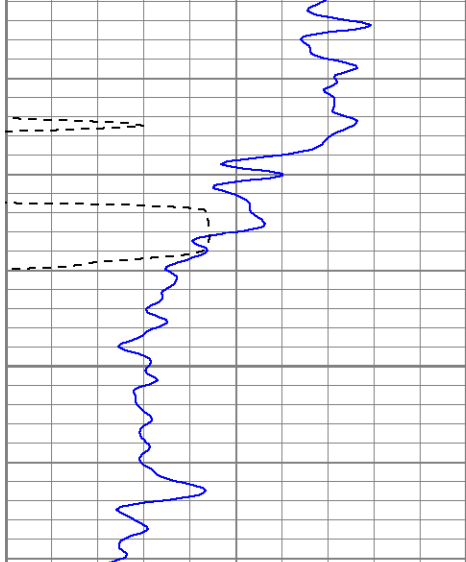
950

1000

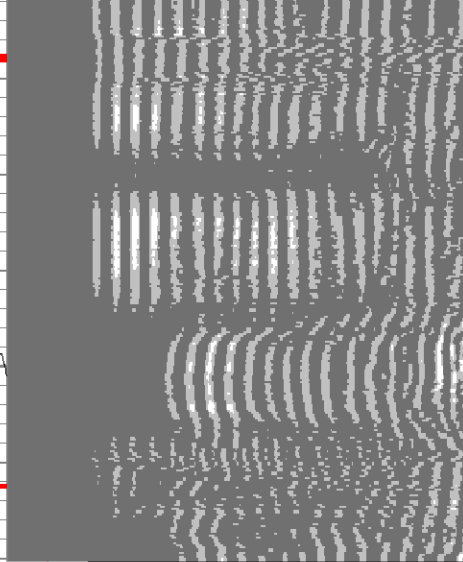
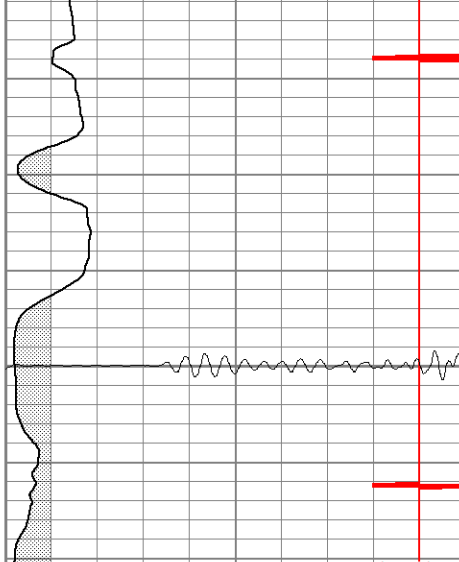
1050

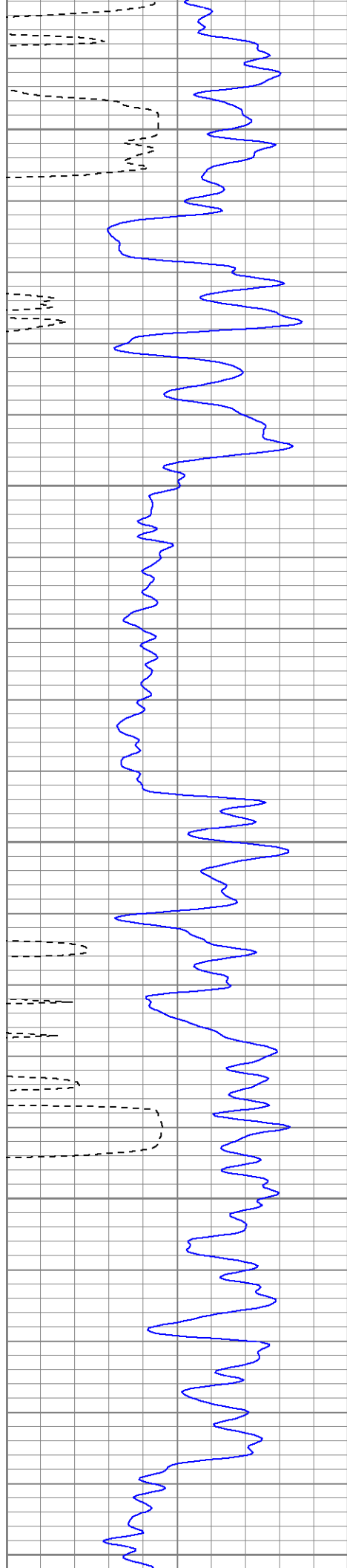
Surface Casing





1100





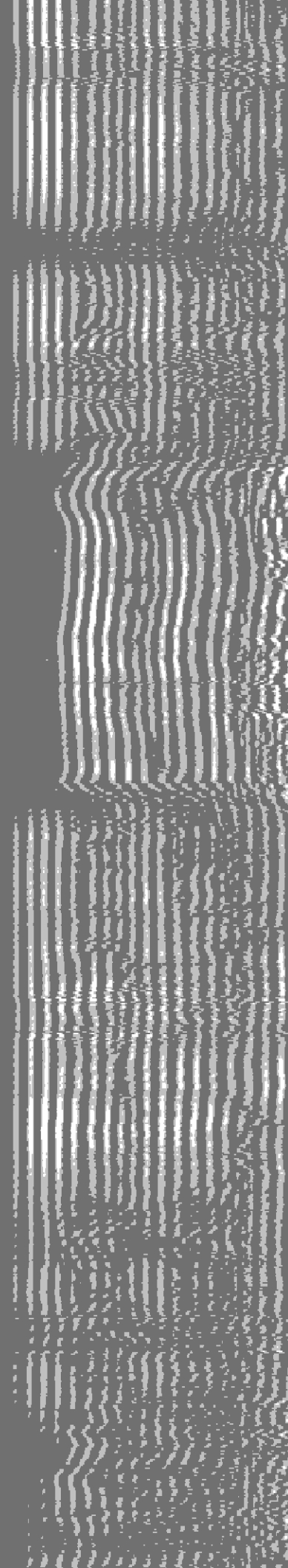
1300

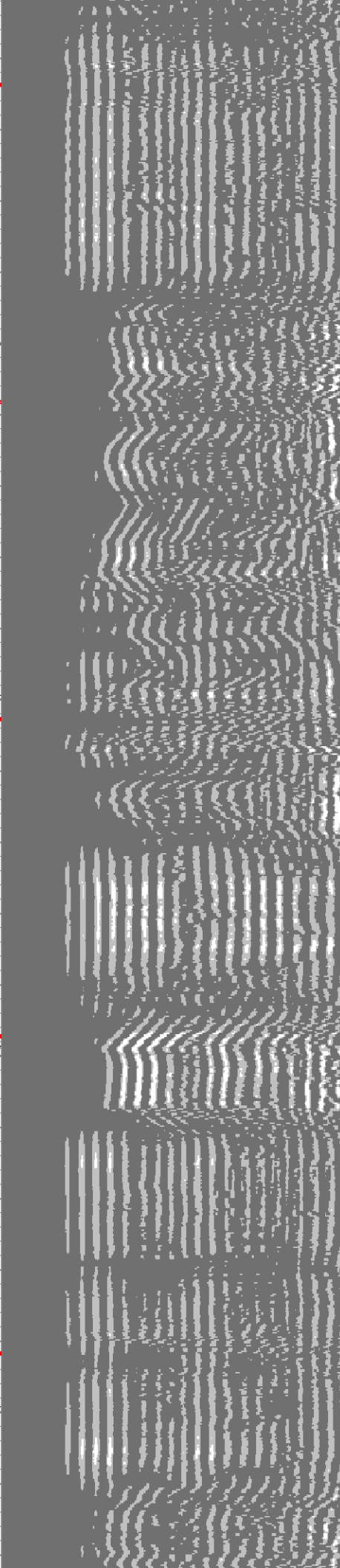
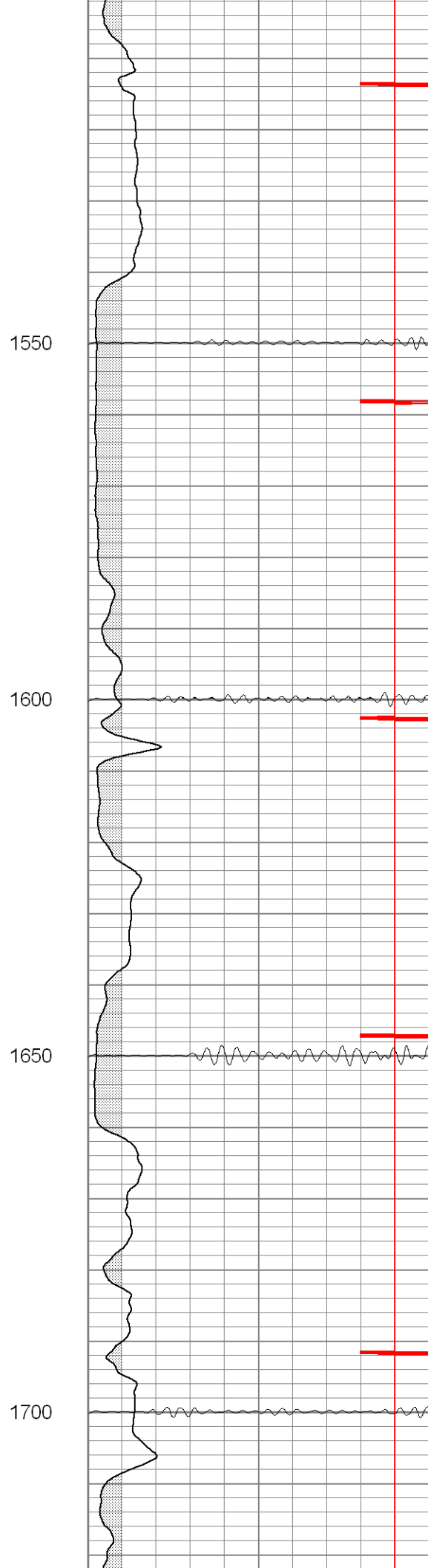
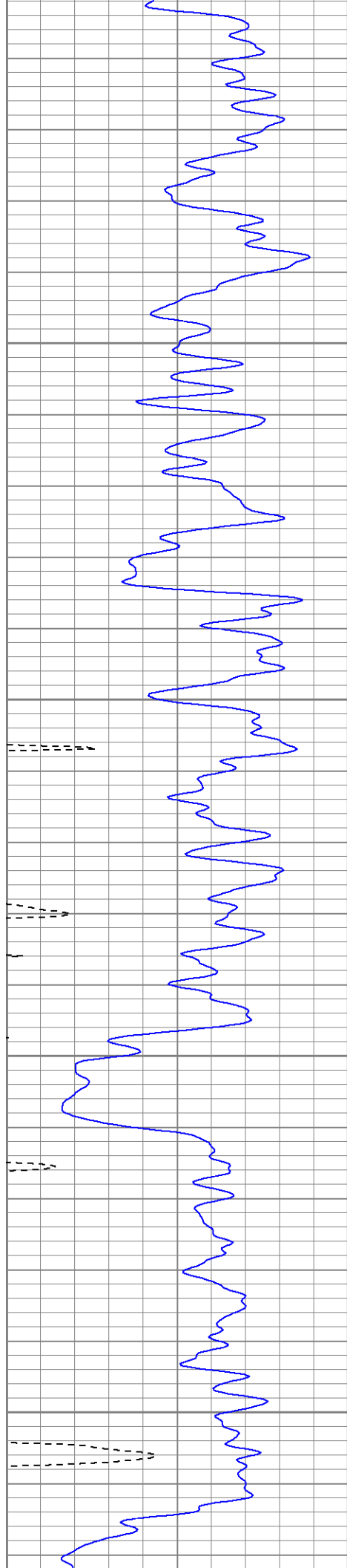
1350

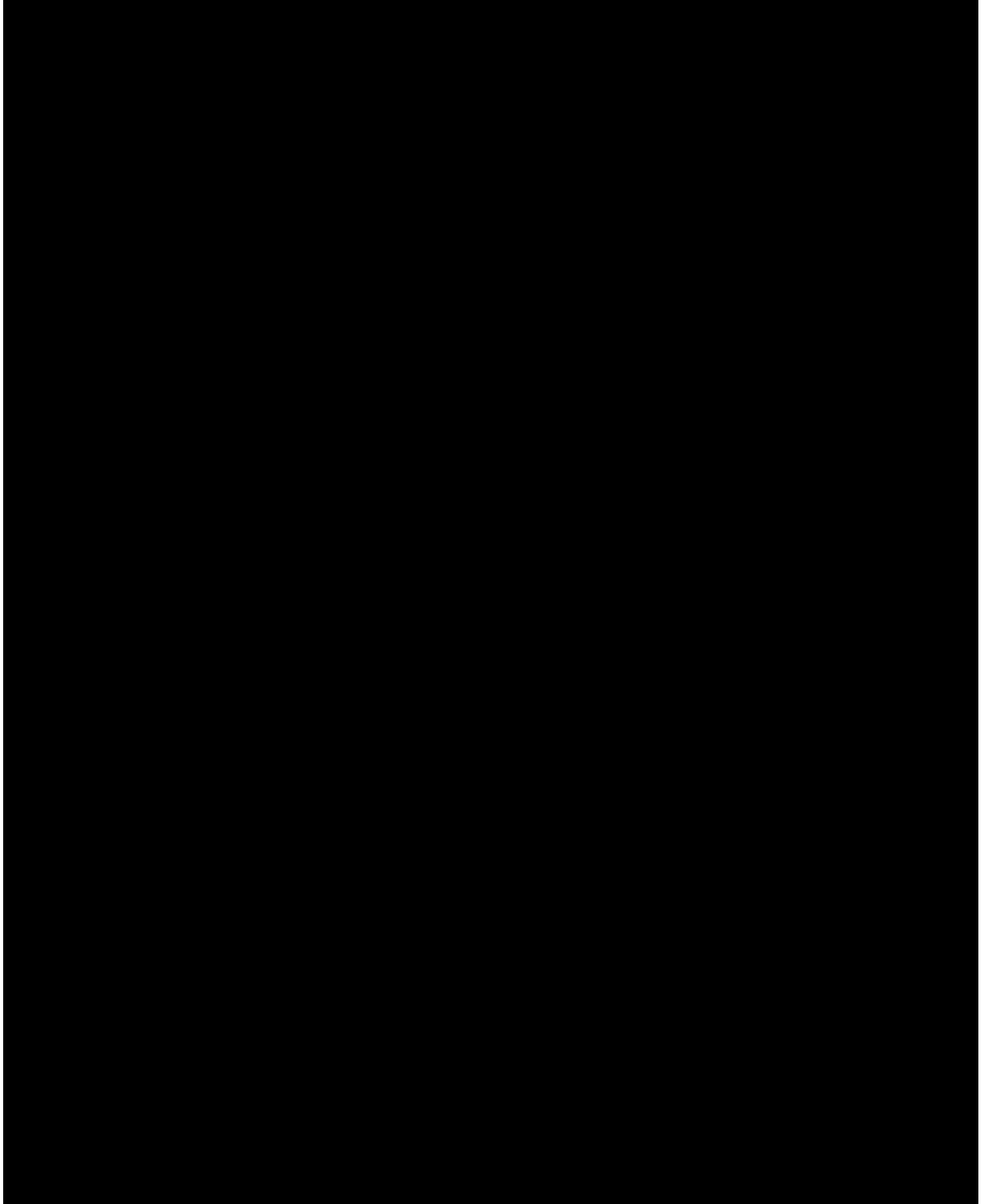
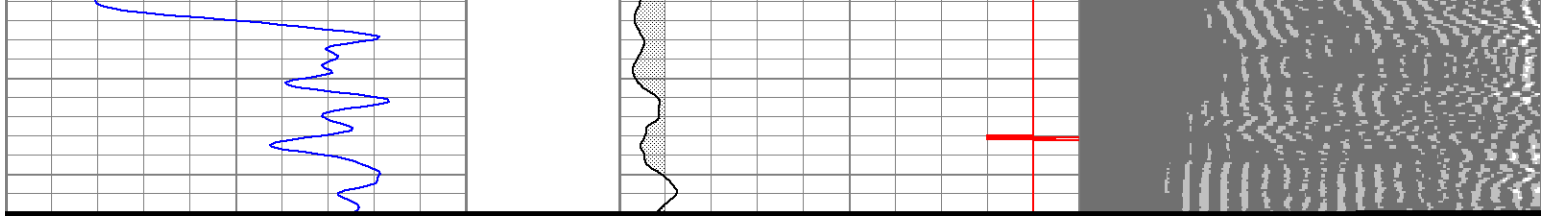
1400

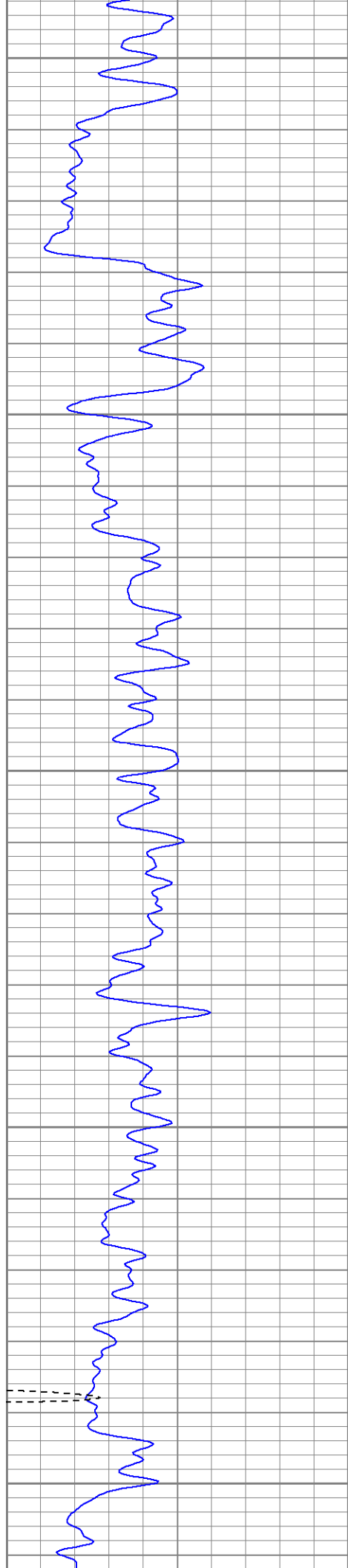
1450

1500









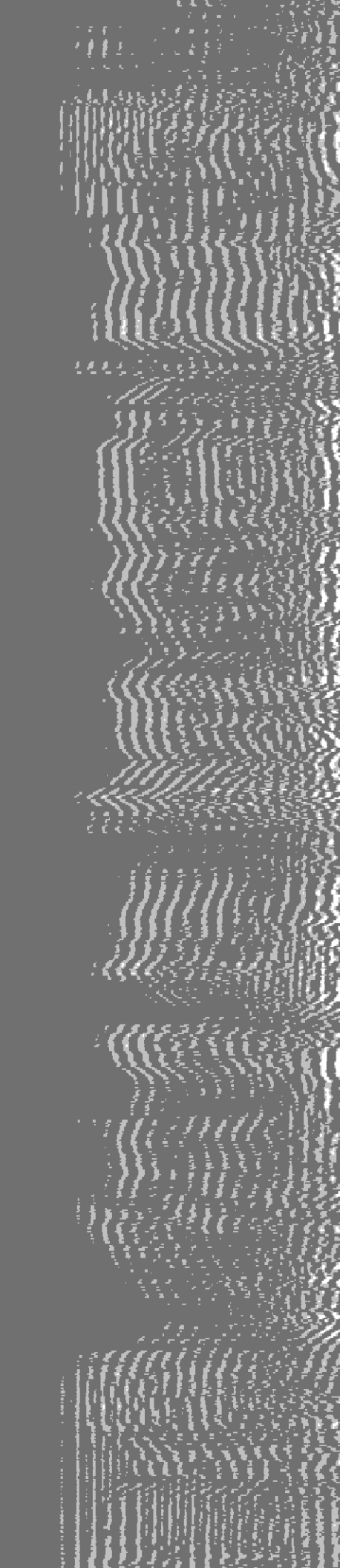
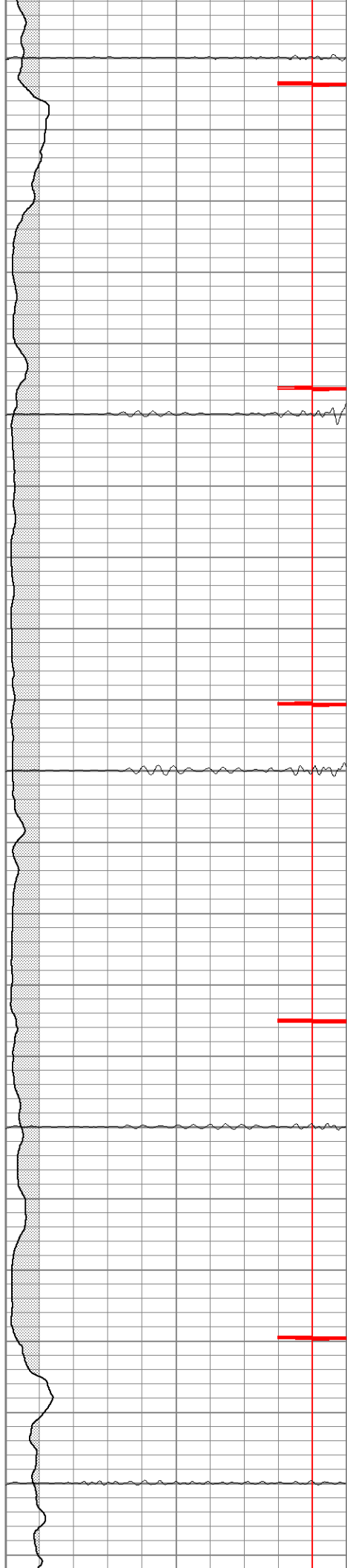
1950

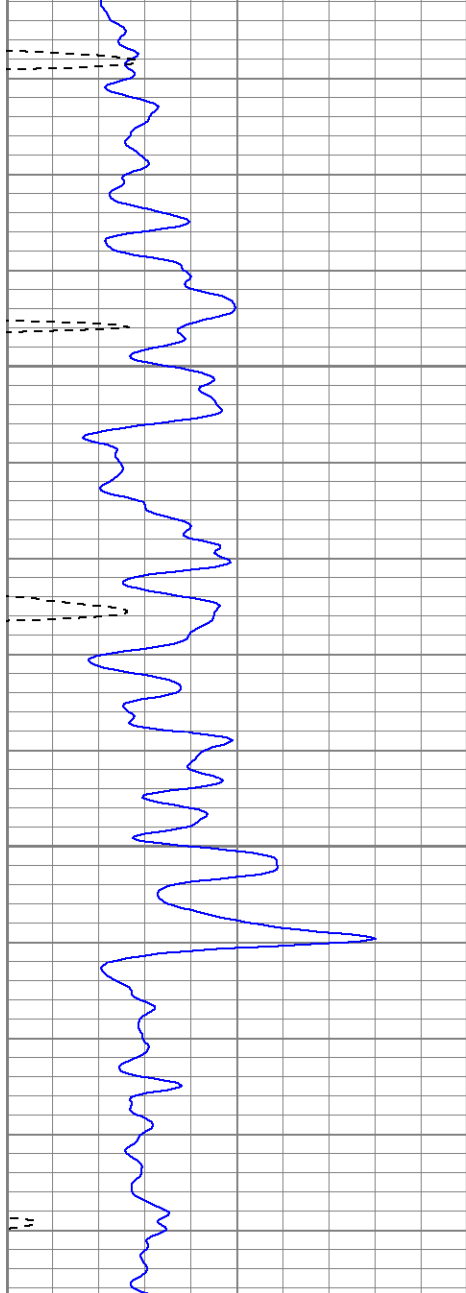
2000

2050

2100

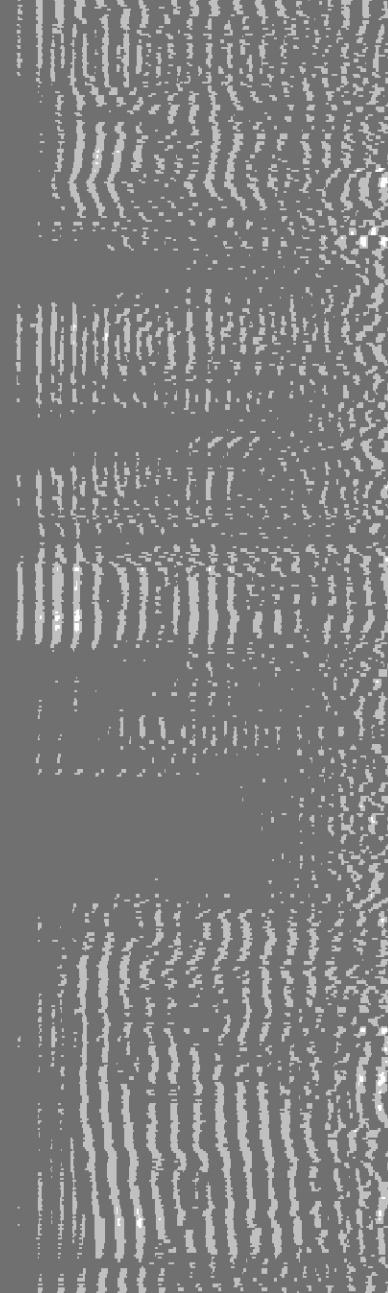
2150





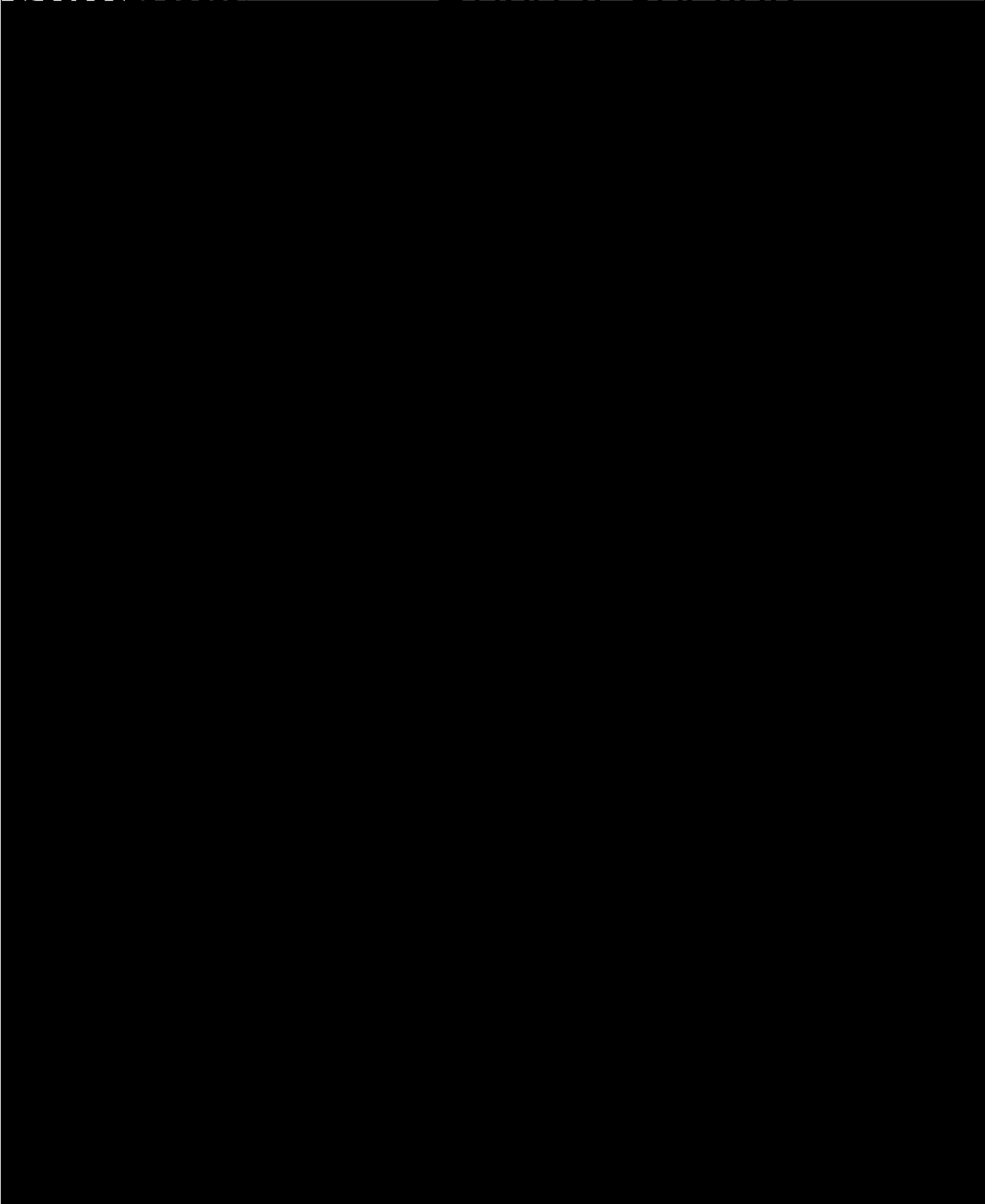
2200

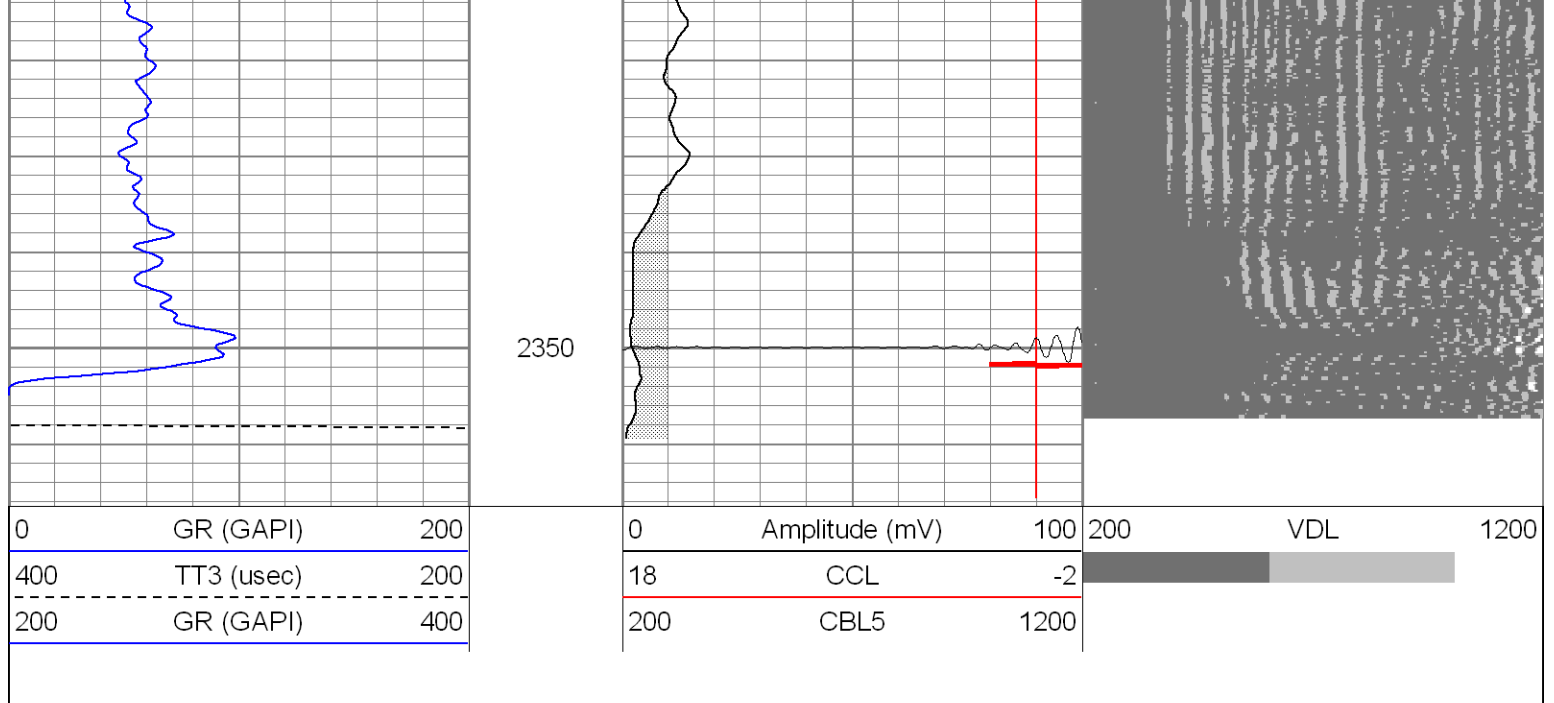
2250



200	GR (GAPI)	400	200	CBL5	1200

Bottom	Repeat Section
---------------	-----------------------





Cement Bond Log Calibration Report

Serial Number: Titan3
 Tool Model: T3
 Performed: Mon Jul 24 11:50:08 2006

Depth: 41.715 ft
 Casing Diameter: 5.5 in

	3' Spacing	5' Spacing	
Signal Zero:	1	1	mV
Calibrated Amplitude:	72	72	mV
Reading at Signal Zero:	0	0.00661621	V
Reading in Free Pipe:	1	1.3	V

Gain: 71
 Offset: 1

54.8948
 0.636805

Gamma Ray Calibration Report

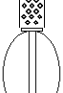
Serial Number: Titan3
 Tool Model: T2
 Performed: Tue Aug 29 11:43:58 2006

Calibrator Value: 200.0 GAPI

Background Reading: 54.0 cps
 Calibrator Reading: 219.0 cps

Sensitivity: 1.1500 GAPI/cps

Sensor	Offset (ft)	Schematic	Description	Len (ft)	OD (in)	Wt (lb)
GR	13.40		GR-T2 (Titan3)	2.52	2.44	25.00
WVF5	9.24		CBL-T3 (Titan3)	7.23	2.44	110.00
WVF3	8.24					

CENT	4.91				
CCL	0.70				
		Dataset: /field/well/run1/_plots/_/jobs_/cbl Total Length: 14.66 ft Total Weight: 175.00 lb O.D. 2.75 in			