

# CEMENT BOND LOG

Company XTO Energy Inc.

Well Apache Canyon 25-01

Field	Purgatorie River
1	1
2	2
3	3
4	4
5	5
6	6
7	7
8	8
9	9
10	10
11	11
12	12
13	13
14	14
15	15
16	16
17	17
18	18
19	19
20	20
21	21
22	22
23	23
24	24
25	25
26	26
27	27
28	28
29	29
30	30
31	31
32	32
33	33
34	34
35	35
36	36
37	37
38	38
39	39
40	40
41	41
42	42
43	43
44	44
45	45
46	46
47	47
48	48
49	49
50	50
51	51
52	52
53	53
54	54
55	55
56	56
57	57
58	58
59	59
60	60
61	61
62	62
63	63
64	64
65	65
66	66
67	67
68	68
69	69
70	70
71	71
72	72
73	73
74	74
75	75
76	76
77	77
78	78
79	79
80	80
81	81
82	82
83	83
84	84
85	85
86	86
87	87
88	88
89	89
90	90
91	91
92	92
93	93
94	94
95	95
96	96
97	97
98	98
99	99
100	100

County Las Animas State CO

Location: API #: 05 071 09283 00  
882' FNL & 322' FEL

Other Services  
Pressure  
Control

SEC 25 TWP 34S RGE 68W

Permanent Datum	Ground Level	Elevation	79661
-----------------	--------------	-----------	-------

Drilling Measured From Ground Level	G.L. 7961'
1	1
2	2
3	3
4	4
5	5
6	6
7	7
8	8
9	9
10	10
11	11
12	12
13	13
14	14
15	15
16	16
17	17
18	18
19	19
20	20
21	21
22	22
23	23
24	24
25	25
26	26
27	27
28	28
29	29
30	30
31	31
32	32
33	33
34	34
35	35
36	36
37	37
38	38
39	39
40	40
41	41
42	42
43	43
44	44
45	45
46	46
47	47
48	48
49	49
50	50
51	51
52	52
53	53
54	54
55	55
56	56
57	57
58	58
59	59
60	60
61	61
62	62
63	63
64	64
65	65
66	66
67	67
68	68
69	69
70	70
71	71
72	72
73	73
74	74
75	75
76	76
77	77
78	78
79	79
80	80
81	81
82	82
83	83
84	84
85	85
86	86
87	87
88	88
89	89
90	90
91	91
92	92
93	93
94	94
95	95
96	96
97	97
98	98
99	99
100	100

Date	7-31-07
------	---------

Run Number	One
1	0.000
2	0.000
3	0.000
4	0.000
5	0.000
6	0.000
7	0.000
8	0.000
9	0.000
10	0.000
11	0.000
12	0.000
13	0.000
14	0.000
15	0.000
16	0.000
17	0.000
18	0.000
19	0.000
20	0.000
21	0.000
22	0.000
23	0.000
24	0.000
25	0.000
26	0.000
27	0.000
28	0.000
29	0.000
30	0.000
31	0.000
32	0.000
33	0.000
34	0.000
35	0.000
36	0.000
37	0.000
38	0.000
39	0.000
40	0.000
41	0.000
42	0.000
43	0.000
44	0.000
45	0.000
46	0.000
47	0.000
48	0.000
49	0.000
50	0.000
51	0.000
52	0.000
53	0.000
54	0.000
55	0.000
56	0.000
57	0.000
58	0.000
59	0.000
60	0.000
61	0.000
62	0.000
63	0.000
64	0.000
65	0.000
66	0.000
67	0.000
68	0.000
69	0.000
70	0.000
71	0.000
72	0.000
73	0.000
74	0.000
75	0.000
76	0.000
77	0.000
78	0.000
79	0.000
80	0.000
81	0.000
82	0.000
83	0.000
84	0.000
85	0.000
86	0.000
87	0.000
88	0.000
89	0.000
90	0.000
91	0.000
92	0.000
93	0.000
94	0.000
95	0.000
96	0.000
97	0.000
98	0.000
99	0.000
100	0.000

Depth Logger	2300'
--------------	-------

Bottom Logged Interval	2298'
------------------------	-------

Open Hole Size	7 7/8
----------------	-------

density / viscosity	///
type fluid	water

Max. Recorded Temp.	110F
---------------------	------

Time Well Ready	BOA
Estimated Cement Top	Surface

Time Logger on Bottom	2:00PM
-----------------------	--------

| Trinidad |  |

recorded by	J. Sissner
-------------	------------

### Borehole Record

Learning Objectives	Dir	11011	10



String	Size	W
Surface	8 5/8"	

rot. String	rot. String
1	1
2	2
3	3
4	4
5	5
6	6
7	7
8	8
9	9
10	10
11	11
12	12
13	13
14	14
15	15
16	16
17	17
18	18
19	19
20	20
21	21
22	22
23	23
24	24
25	25
26	26
27	27
28	28
29	29
30	30
31	31
32	32
33	33
34	34
35	35
36	36
37	37
38	38
39	39
40	40
41	41
42	42
43	43
44	44
45	45
46	46
47	47
48	48
49	49
50	50
51	51
52	52
53	53
54	54
55	55
56	56
57	57
58	58
59	59
60	60
61	61
62	62
63	63
64	64
65	65
66	66
67	67
68	68
69	69
70	70
71	71
72	72
73	73
74	74
75	75
76	76
77	77
78	78
79	79
80	80
81	81
82	82
83	83
84	84
85	85
86	86
87	87
88	88
89	89
90	90
91	91
92	92
93	93
94	94
95	95
96	96
97	97
98	98
99	99
100	100

inner		
-------	--	--


<<< Fold Here >>>

All interpretations are opinions based on inferences from electrical or other measurements and we cannot and do not guarantee the accuracy or correctness of any interpretation, and we shall not, except in the case of gross or willful negligence on our part, be liable or responsible for any loss, costs, damages, or expenses incurred or sustained by anyone resulting from any interpretation made by any of our officers, agents or employees. These interpretations are also subject to our general terms and conditions set out in our current Price Schedule.

---

Comments

Lower Bosque Entrance, stay on main rd. past camp ground, drive thru gate, second left, drive thru one location, at Y stay left, 1st drive through location

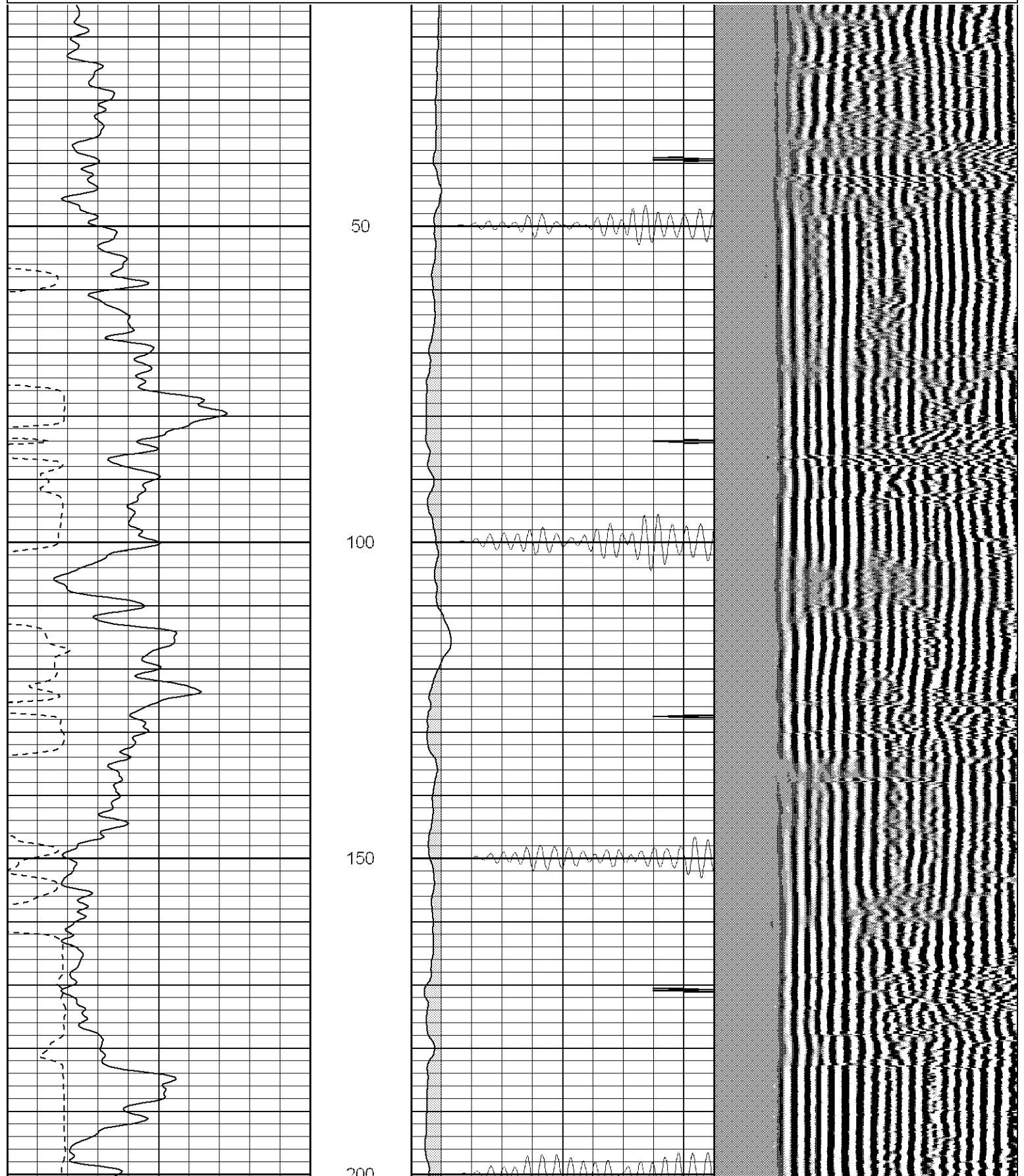


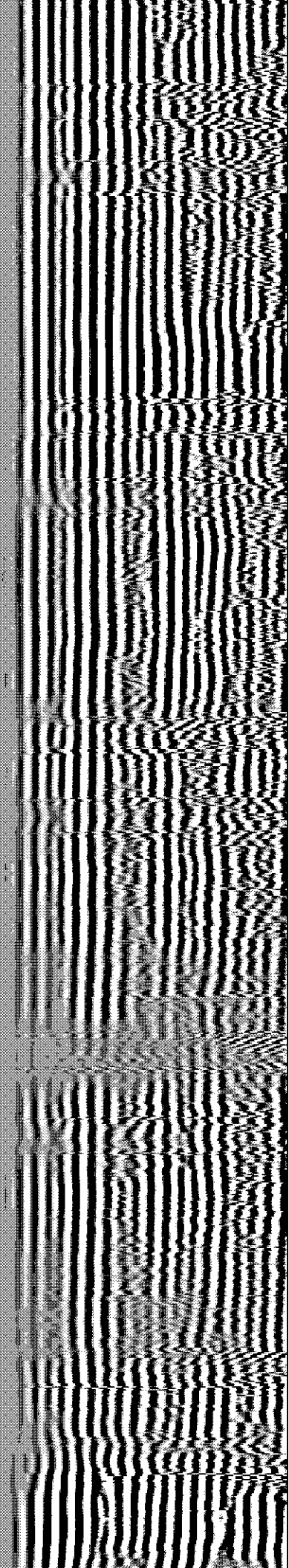
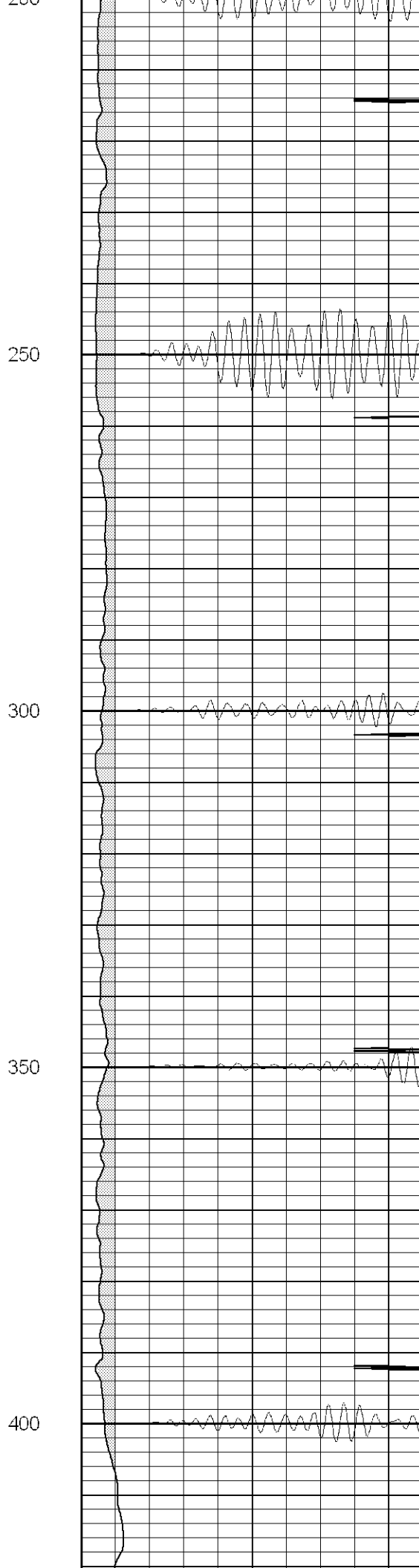
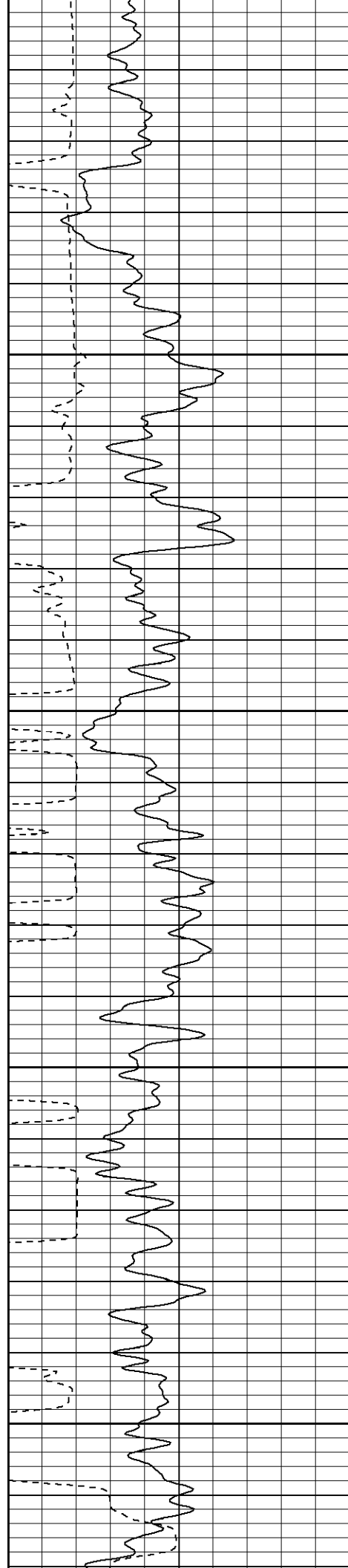
Black Lick, Pa.  
Mercer, Pa.  
Wooster, Oh.  
Cleveland, Ok.  
Trinidad, Co.

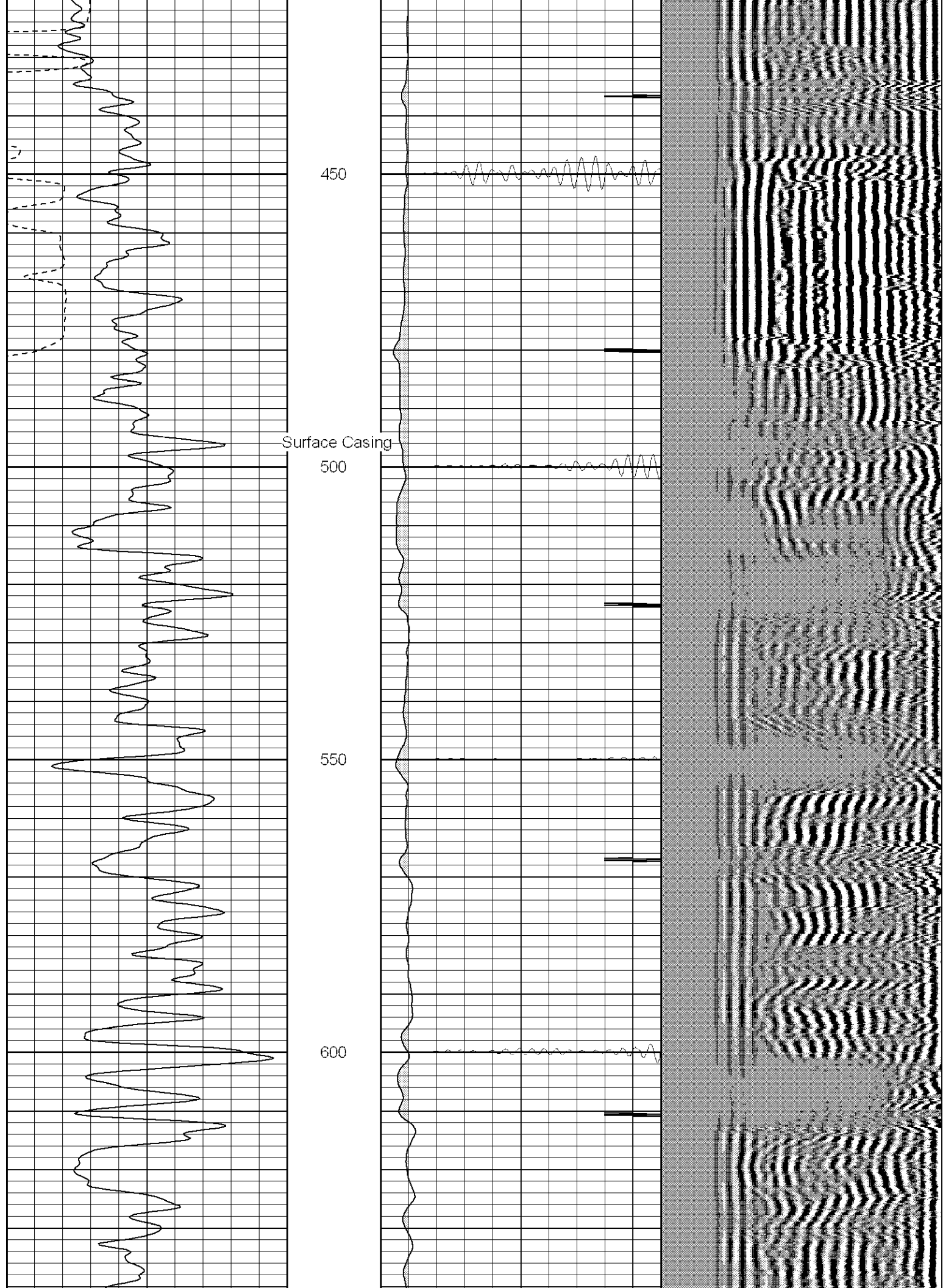
## Main Pass (1000PSI)

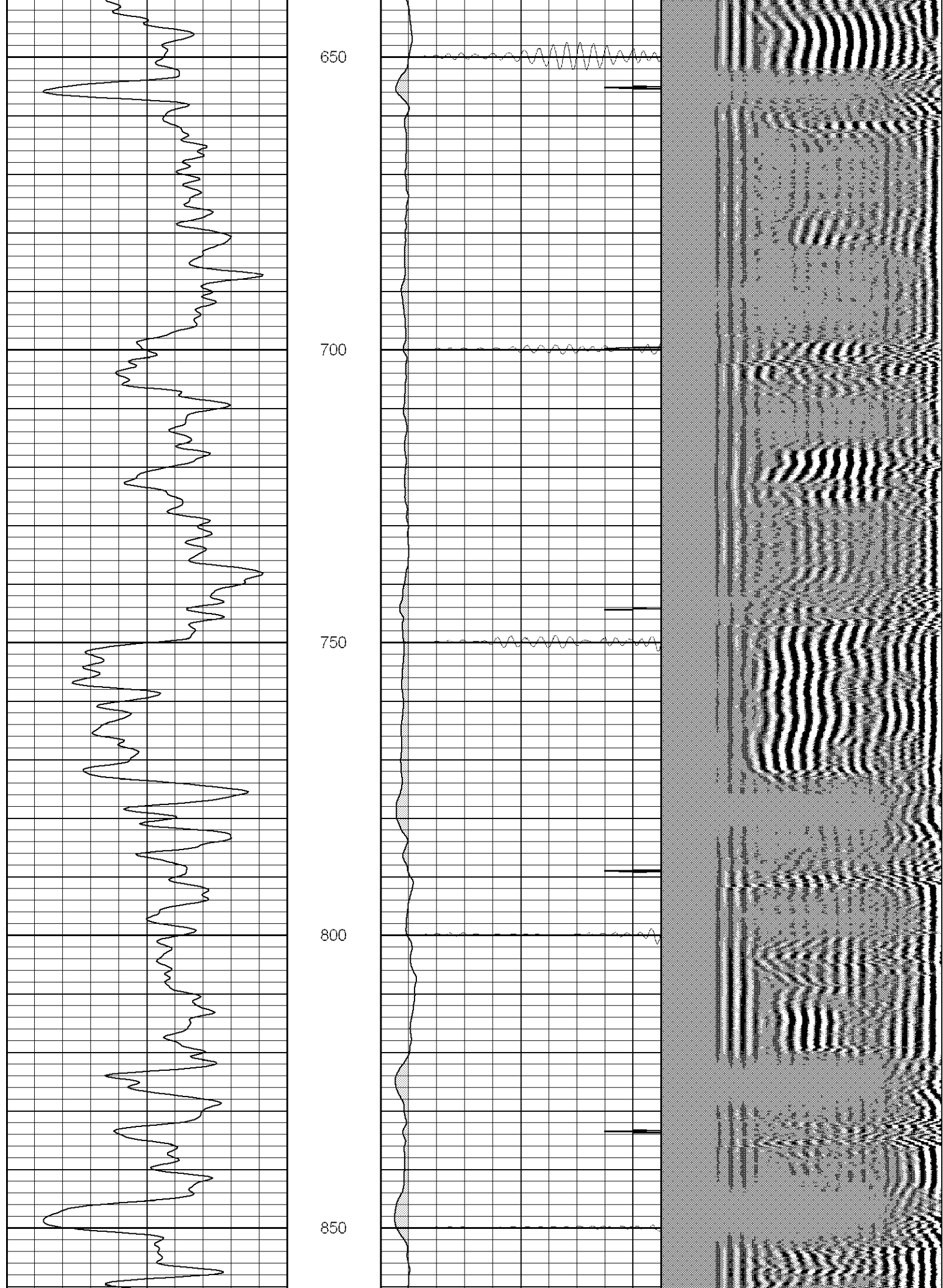
Database File: ac250173107b.db  
Dataset Pathname: pass4  
Presentation Format: cblrt  
Dataset Creation: Wed Aug 01 06:53:49 2007  
Charted by: Depth in Feet scaled 1:240

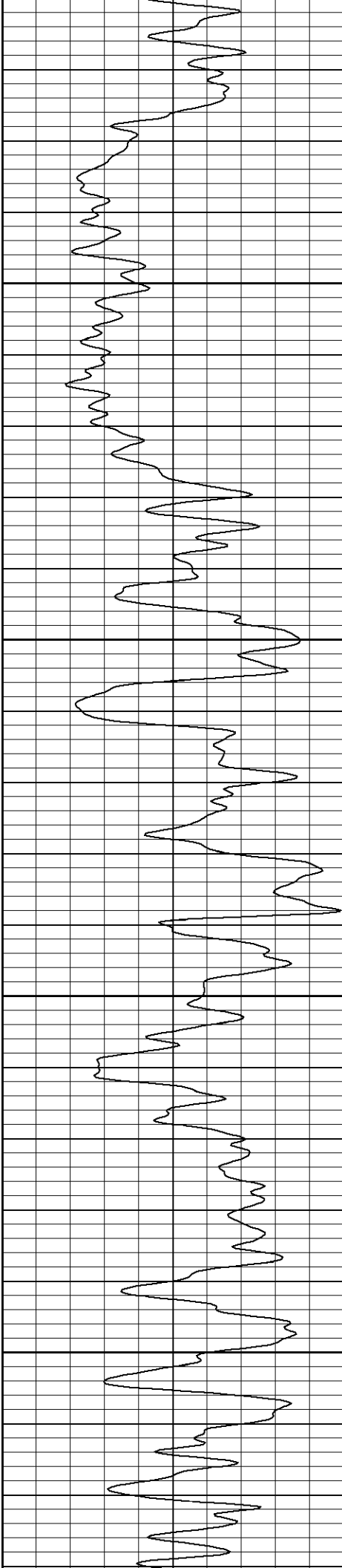
0	GR (GAPI)	200	0	AMP3 (mV)	100	200	Variable Density	1200
400	TT3 (usec)	200	18	CCL	-2			
			200	CBL5	1200			









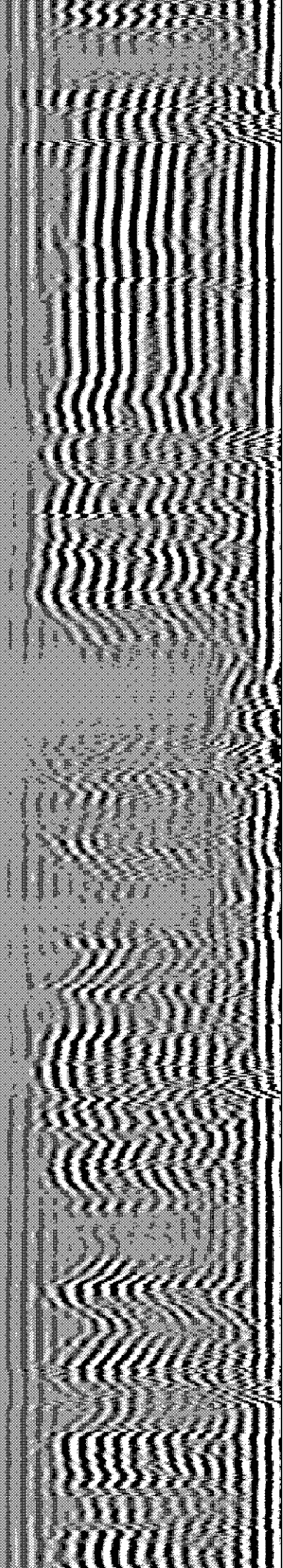
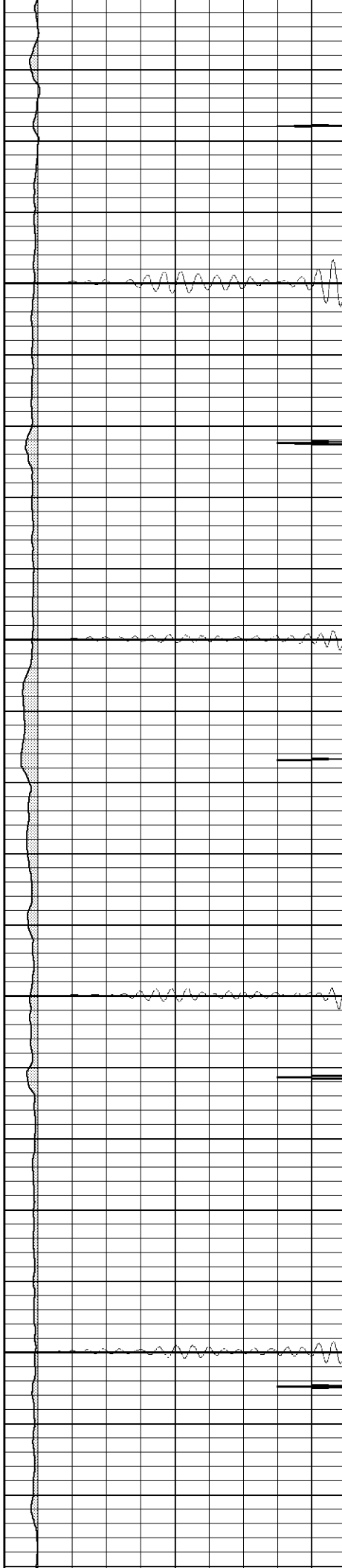


900

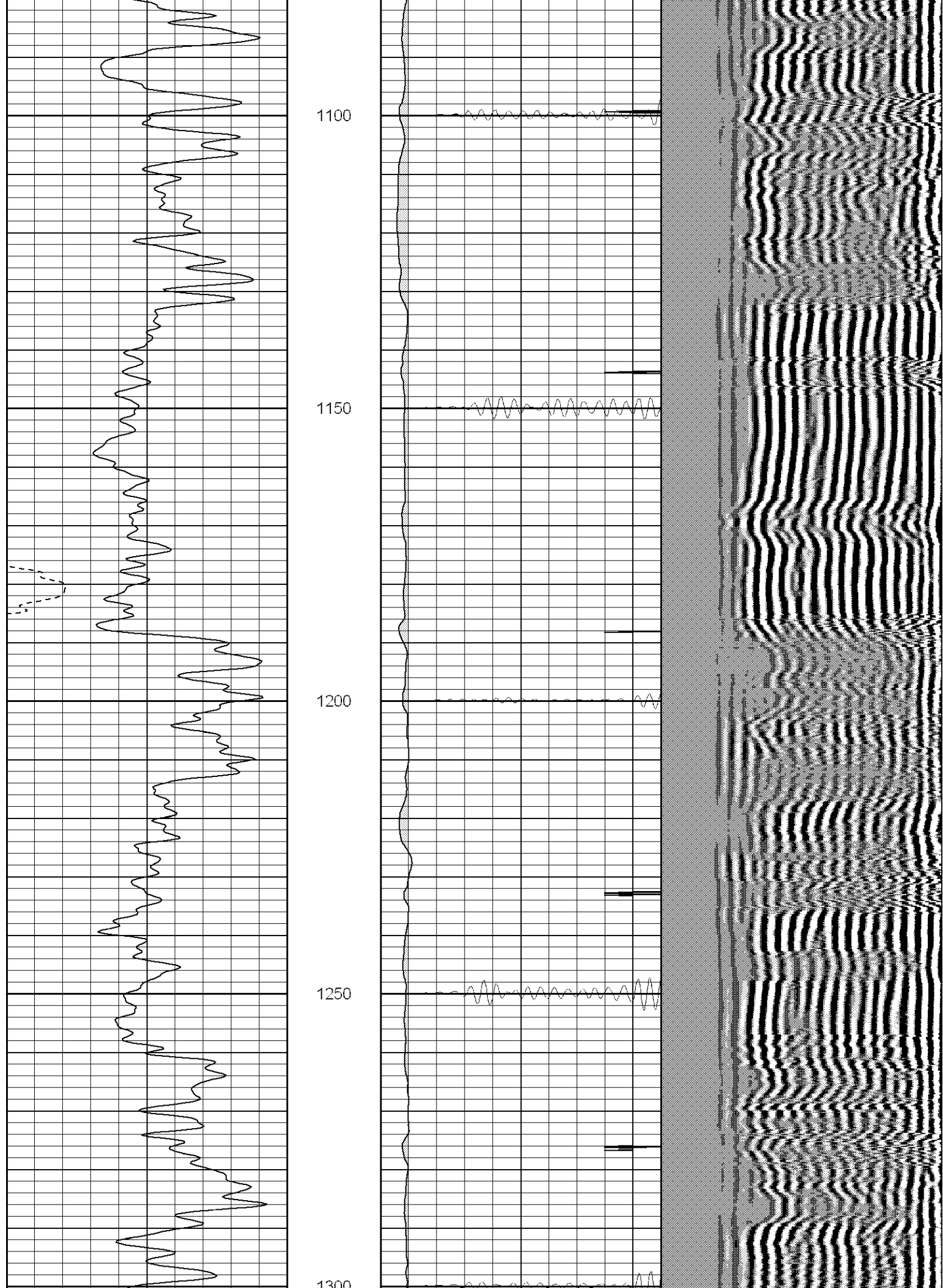
950

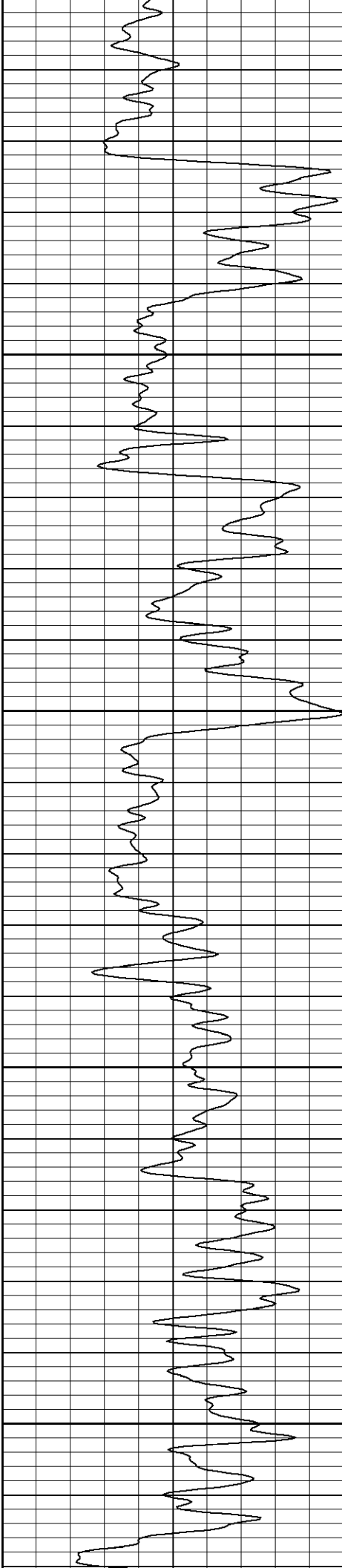
1000

1050

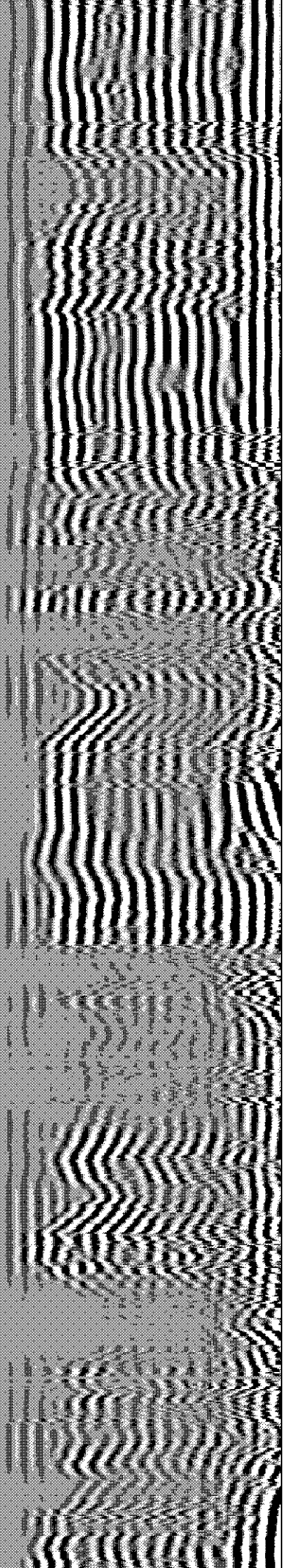
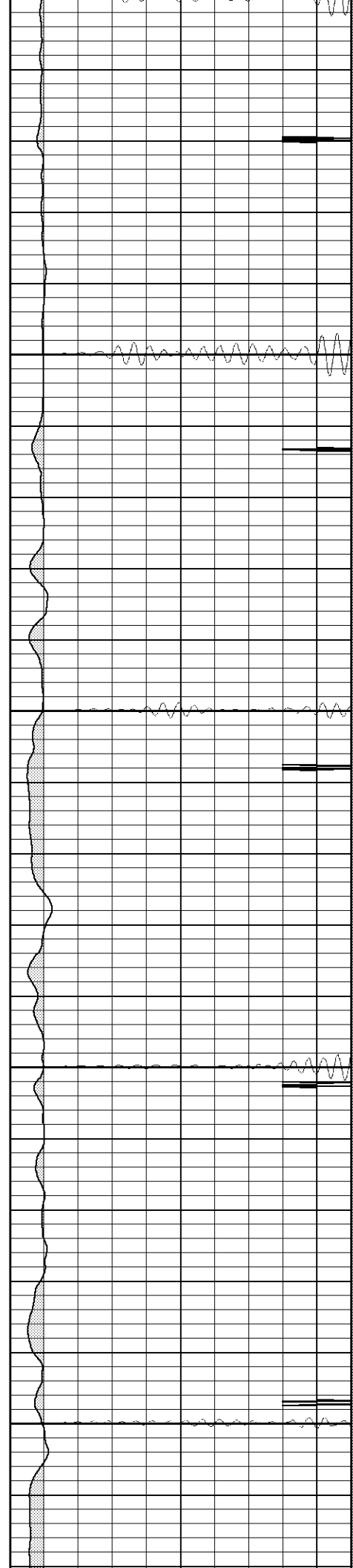




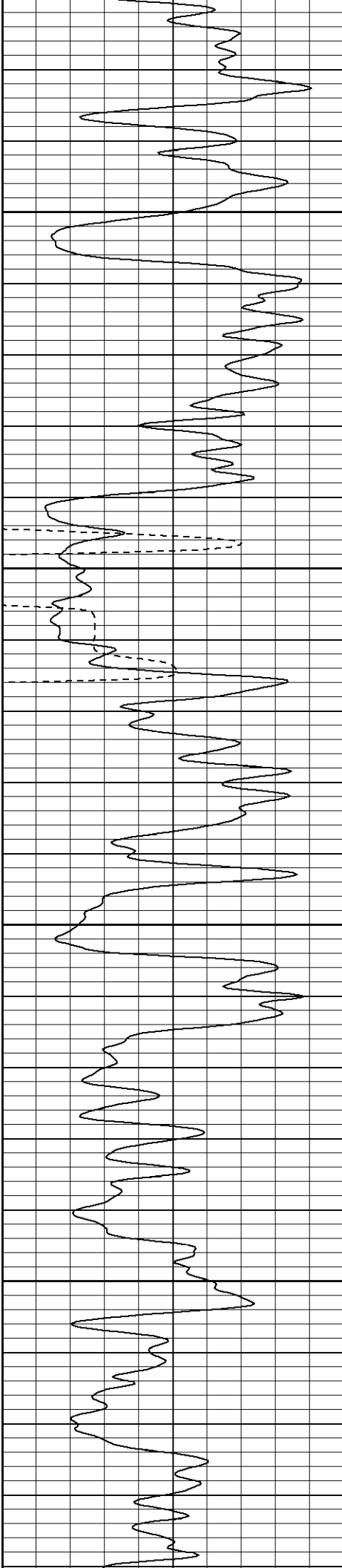




1500  
1350  
1400  
1450  
1500





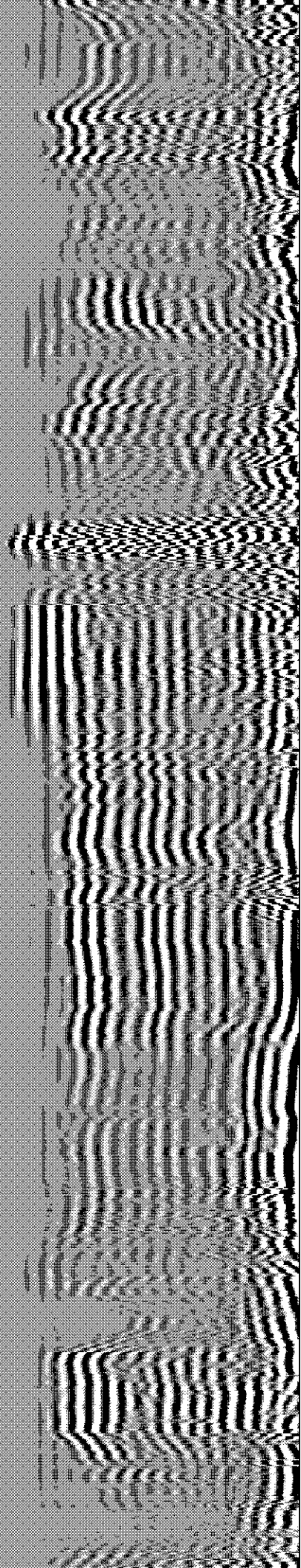
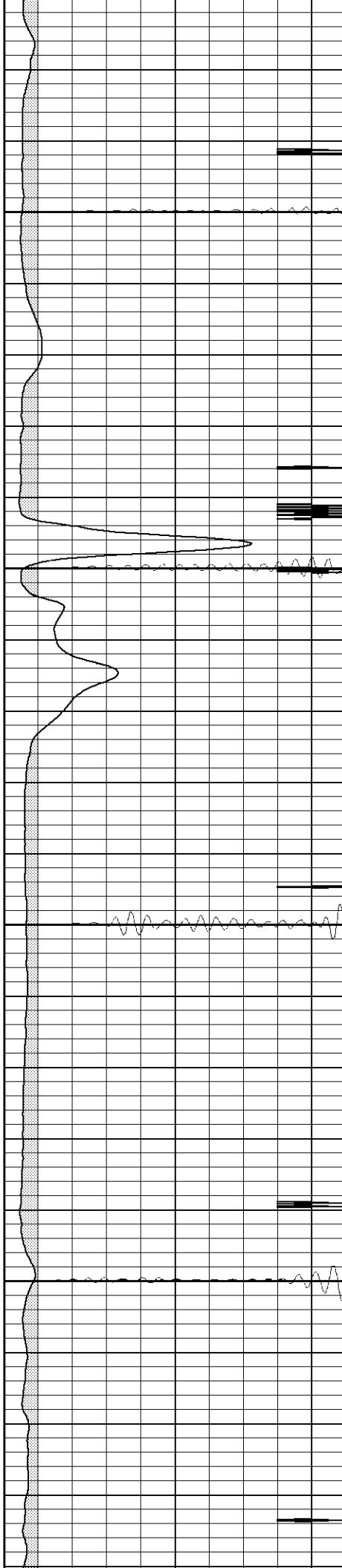


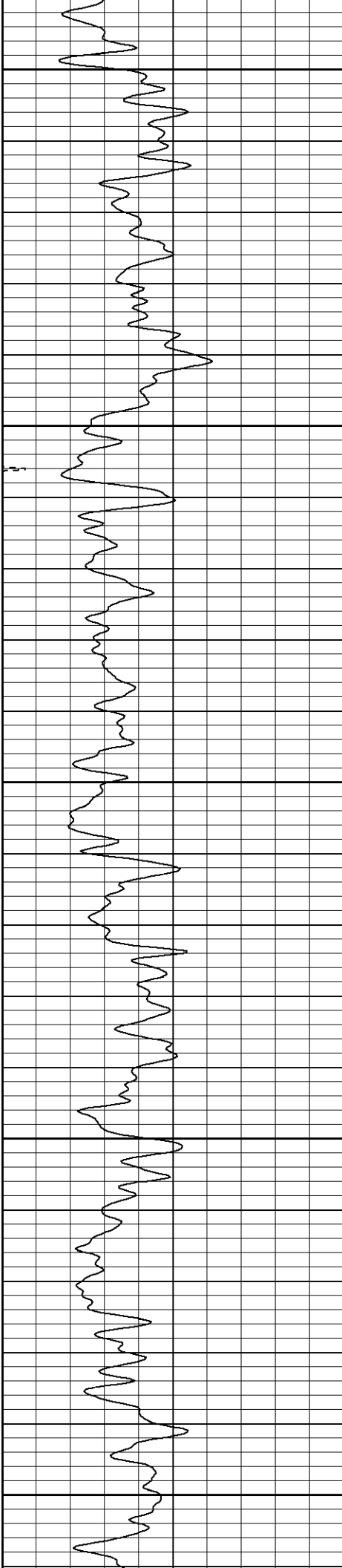
1550

1600

1650

1700





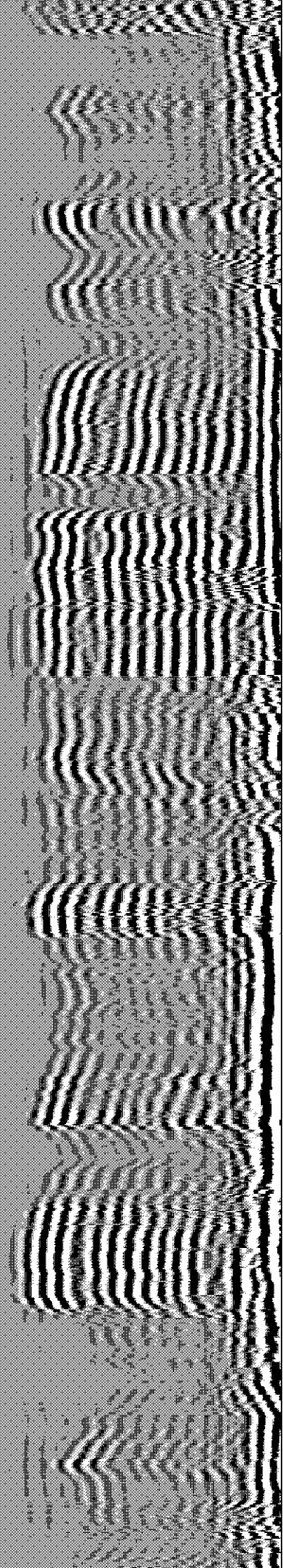
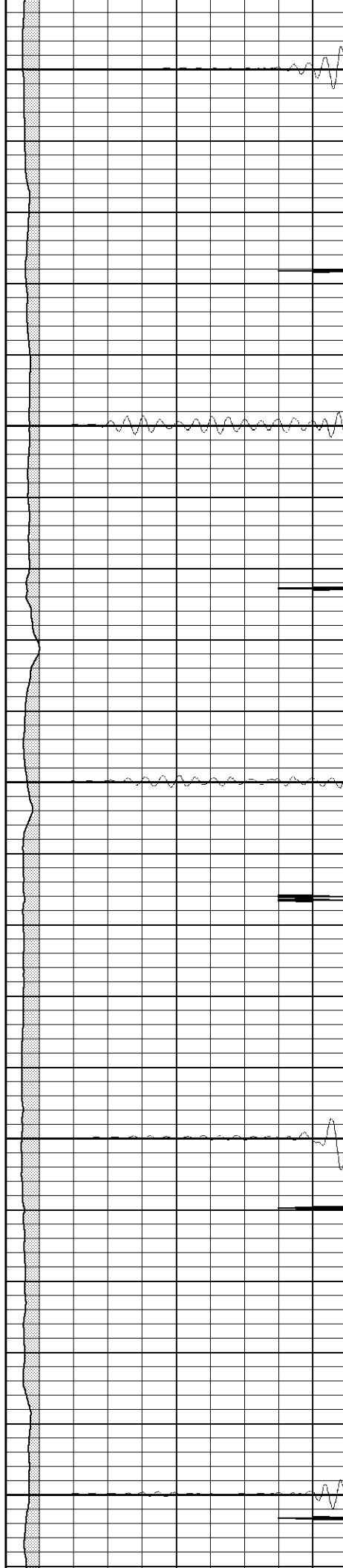
1750

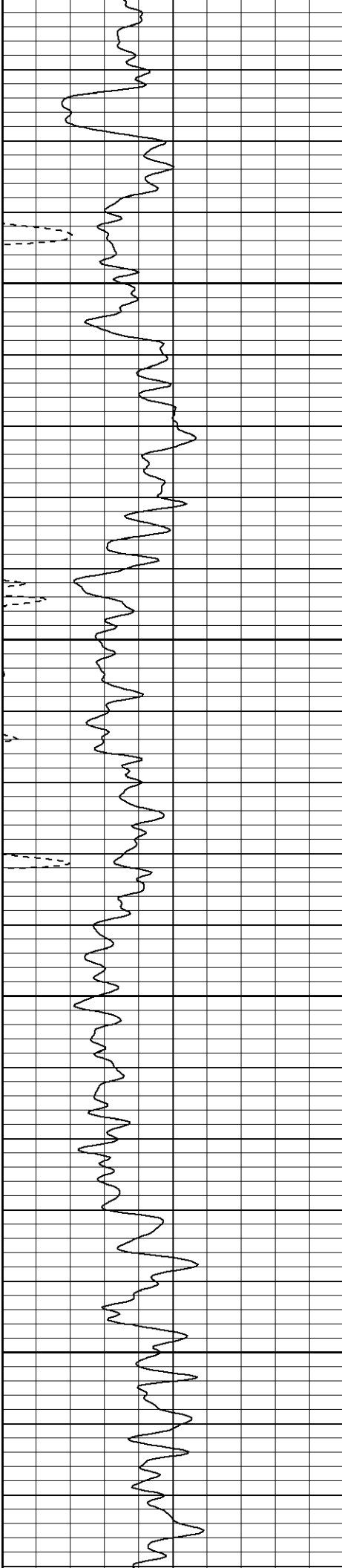
1800

1850

1900

1950



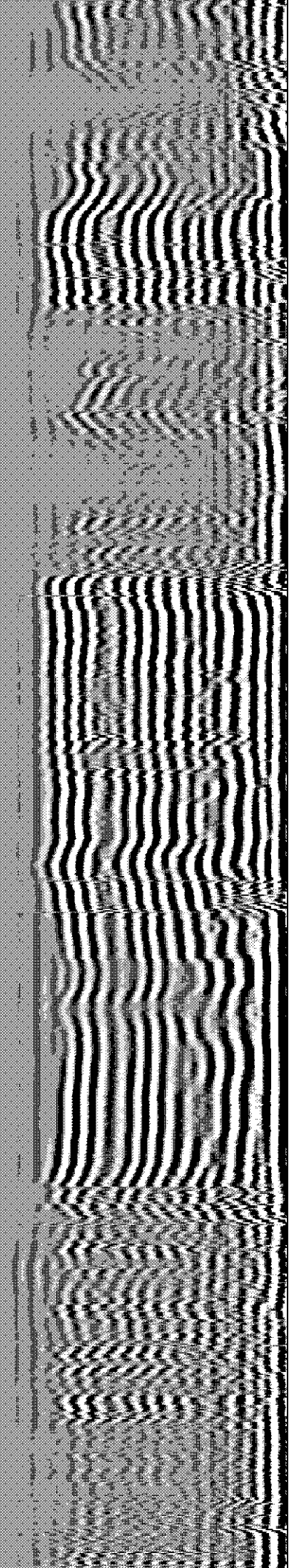
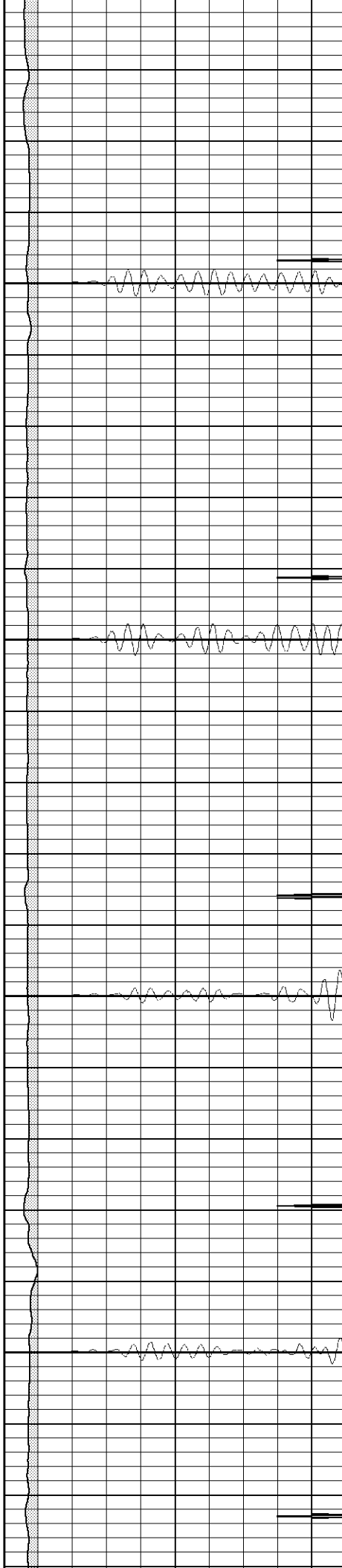


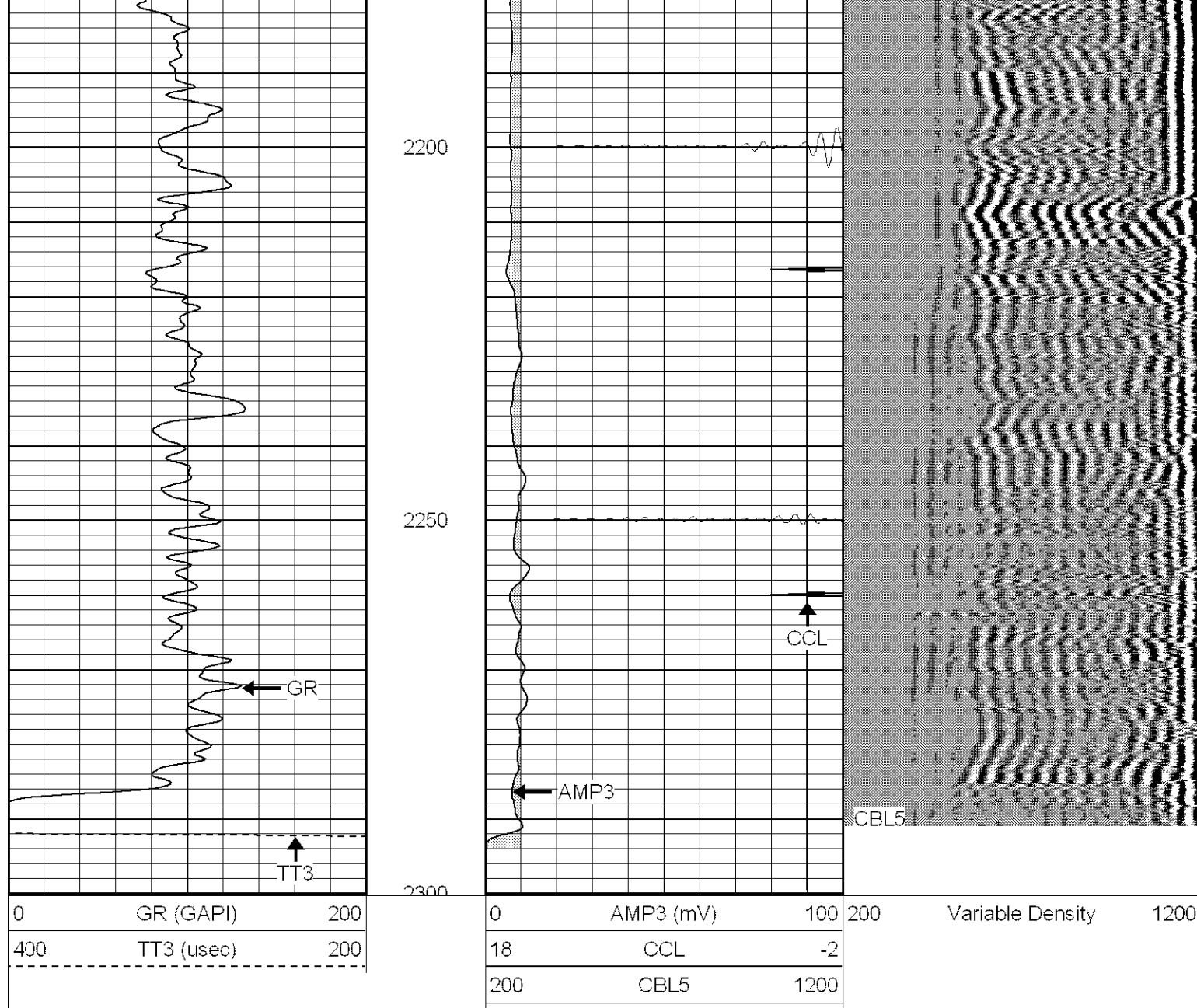
2000

2050

2100

2150



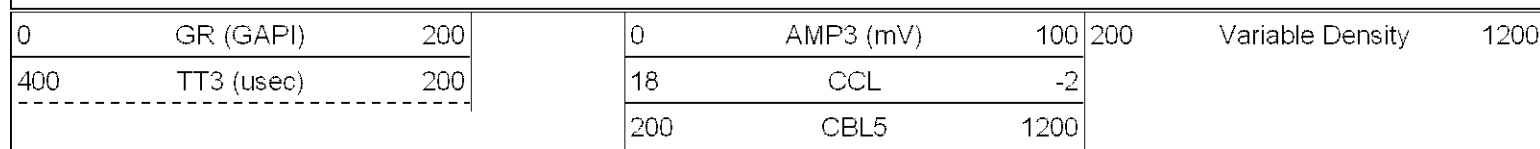


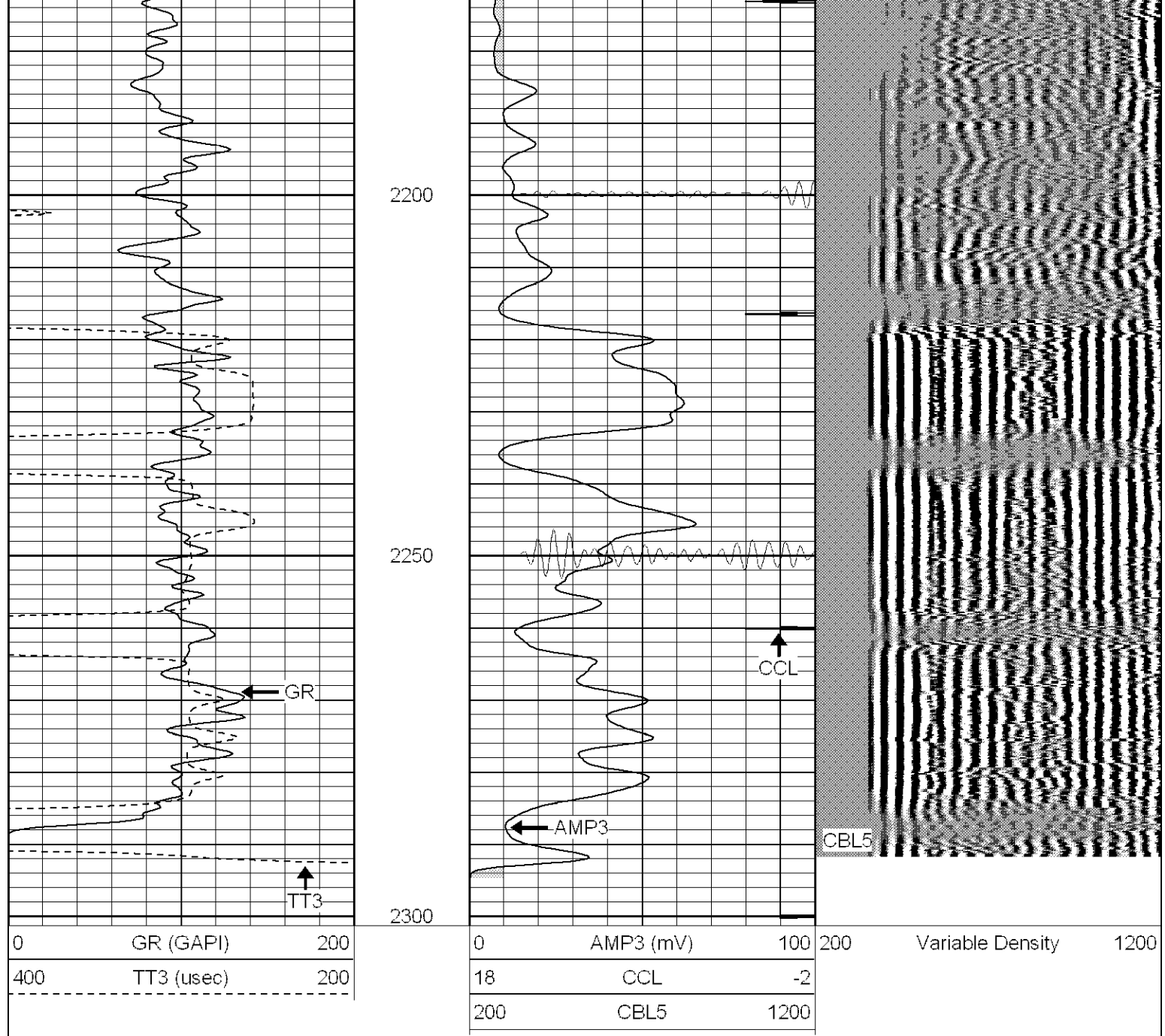
**SUPERIOR**

Black Lick, Pa.  
Mercer, Pa.  
Wooster, Oh.  
Cleveland, Ok.  
Trinidad, Co.

# Repeat Section (0PSI)

Database File: ac250173107b.db  
Dataset Pathname: pass1  
Presentation Format: cblrt  
Dataset Creation: Tue Jul 31 14:10:41 2007 by Log Open-Cased 070508  
Charted by: Depth in Feet scaled 1:240





### Calibration Report

Database File: ac250173107b.db  
 Dataset Pathname: pass1  
 Dataset Creation: Tue Jul 31 14:10:41 2007 by Log Open-Cased 070508

### Cement Bond Log Calibration Report

Serial Number:	Titan6		
Tool Model:	T6		
Performed:	Wed Jul 25 10:45:02 2007		
Depth:	734.977	ft	
Casing Diameter:	5.5	in	
	3' Spacing	5' Spacing	
Signal Zero:	0	0	mV
Calibrated Amplitude:	85	85	mV
Reading at Signal Zero:	0.0194092	0.0207275	V
Reading in Free Pipe:	0.7	2	V
Gain:	124.991	124.951	

Gain:	[24.89]	42.945]
Offset:	0.5	-0.890144

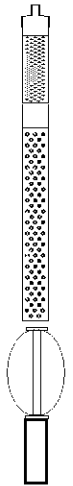
# Gamma Ray Calibration Report

Serial Number: Titan6  
Tool Model: T6  
Performed: Tue Jul 24 11:46:21 2007

Calibrator Value:	1.0	GAPI
-------------------	-----	------

Background Reading:	0.0	cps
Calibrator Reading:	1.0	cps

Sensitivity: 1.2000 GAPJ/cps

Sensor	Offset (ft)	Schematic	Description	Len (ft)	OD (in)	Wt (lb)	
GR	13.64		CHD-None (0)	0.75	1.50	5.00	
			GR-T6 (Titan6)	2.52	2.25	25.00	
WVF5	9.49						
WVF3	8.49			CBL-T6 (Titan6) Titan 6	7.23	2.44	110.00
				CENT-X (1)	3.00	1.69	25.00
CCL	0.83		CCL-T5 (Titan5)	2.15	2.75	15.00	
Dataset: ac250173107b.db: field/well/run1/pass1 Total Length: 15.66 ft Total Weight: 180.00 lb O.D. 2.75 in							