

Patterson

**CEMENT BOND
GAMMA RAY**

Company Pioneer Natural Resources
Well Predator 42-15
Field Purgatorie River
County Las Animas
State CO

Company Pioneer Natural Resources
Well Predator 42-15
Field Purgatorie River
County Las Animas
State CO

Location: API #: 05 071 08531 00
2275' FNL & 569' FEL
SEC 15 TWP 33S RGE 65S
Permanent Datum Ground Level Elevation 6611'
Log Measured From Kelly Bushing 4' Above G.L.
Drilling Measured From Kelly Bushing
Other Services
TEMP./
DEVI. SURV.
Elevation
K.B. 6615'
D.F. -----
G.L. 6615'

Date	10/10/05
Run Number	one
Depth Driller	850'
Depth Logger	820'
Bottom Logged Interval	816'
Top Log Interval	Surf.
Open Hole Size	7 7/8"
Type Fluid	water
Density / Viscosity	///
Max. Recorded Temp.	82F
Estimated Cement Top	Surf.
Time Well Ready	ROA
Time Logger on Bottom	2:00
Equipment Number	T244
Location	Trinidad
Recorded By	Worley
Witnessed By	
Borehole Record	
Run Number	Bit From To Size Weight From To
Casing Record	Size Wgt/Ft Top Bottom
Surface String	8 5/8" 00 569'
Prot. String	
Production String	5 1/2" 00 NA
Liner	

<<< Fold Here >>>

All interpretations are opinions based on inferences from electrical or other measurements and we cannot and do not guarantee the accuracy or correctness of any interpretation, and we shall not, except in the case of gross or willful negligence on our part, be liable or responsible for any loss, costs, damages, or expenses incurred or sustained by anyone resulting from any interpretation made by any of our officers, agents or employees. These interpretations are also subject to our general terms and conditions set out in our current Price Schedule.

Comments

Bon Carbo Left Just Before Hootch House, First Left, Thru Gate(0000),
First Left, First Left To Location.

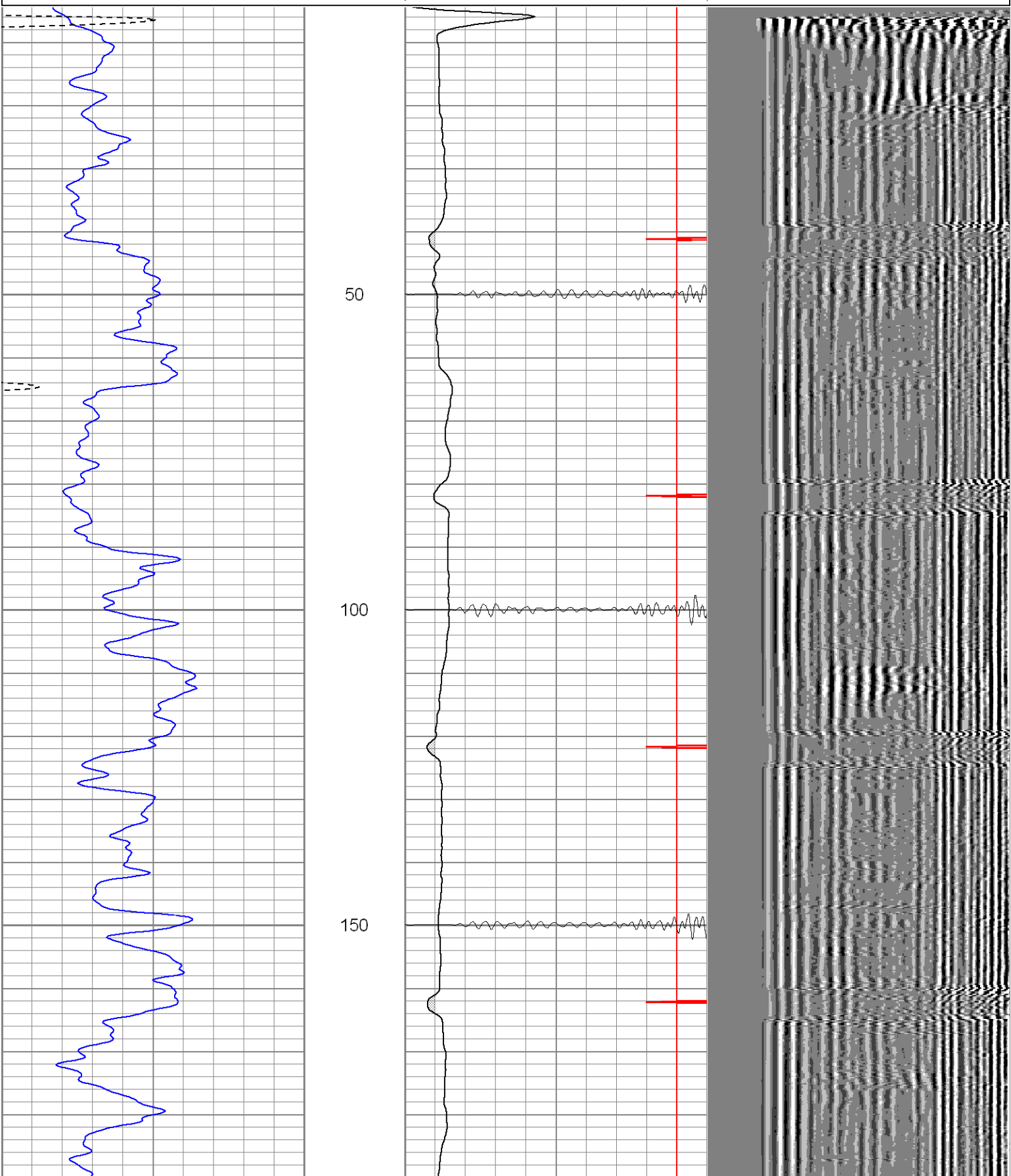
2 Degrees Of Deviation @ T.D.

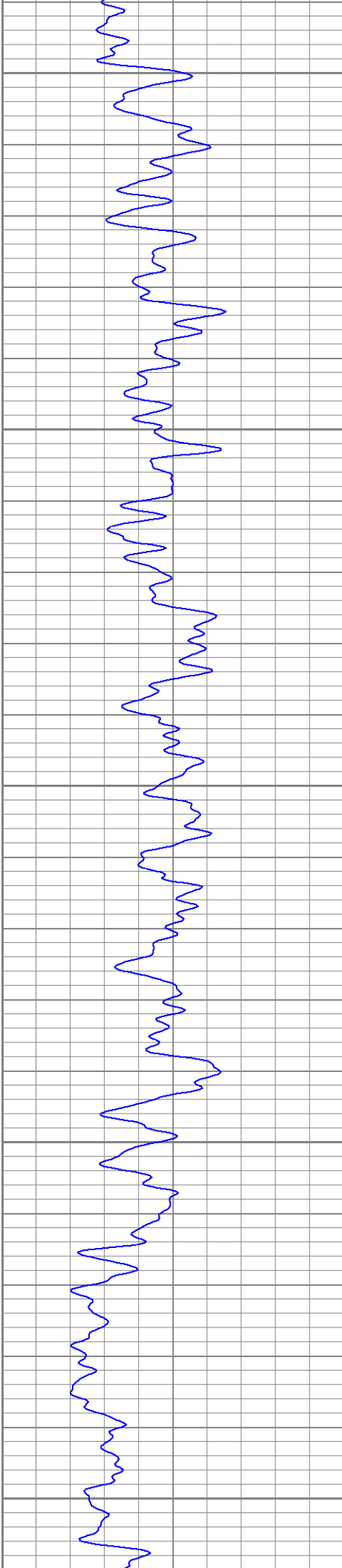
Patterson

Main Pass

Database File: predator101005b.db
Dataset Pathname: pass2
Presentation Format: cblrt
Dataset Creation: Mon Oct 10 14:06:14 2005 by Log Warrior 7.0 STD Cas
Charted by: Depth in Feet scaled 1:240

0	GR (GAPI)	200	0	AMP3 (mV)	100	200	Variable Density	1200
400	TT3 (usec)	200	18	CCL	-2			
			200	CBL5	1200			





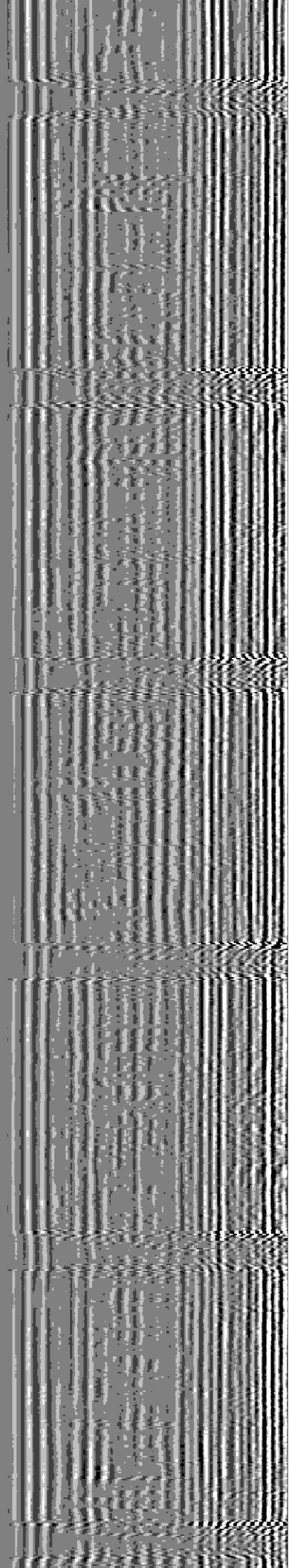
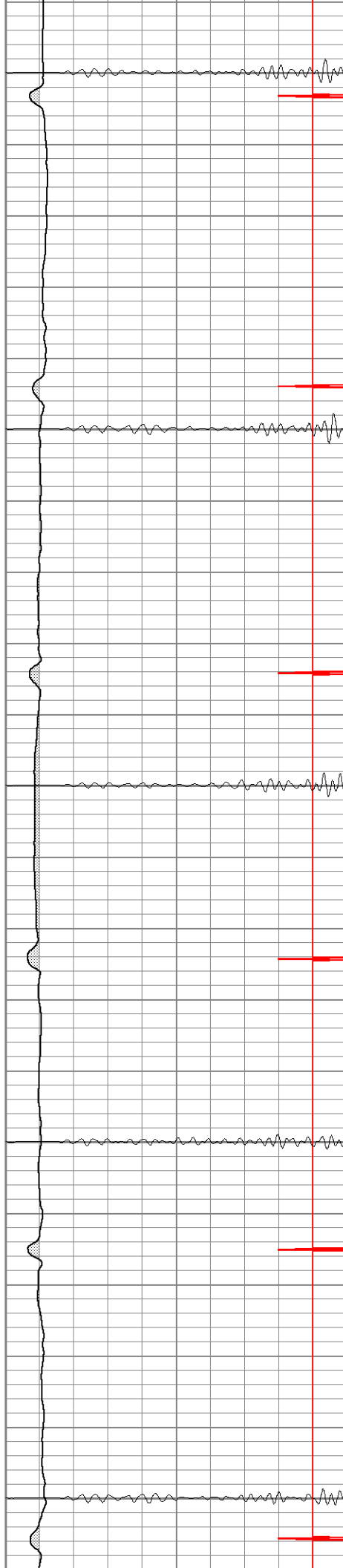
200

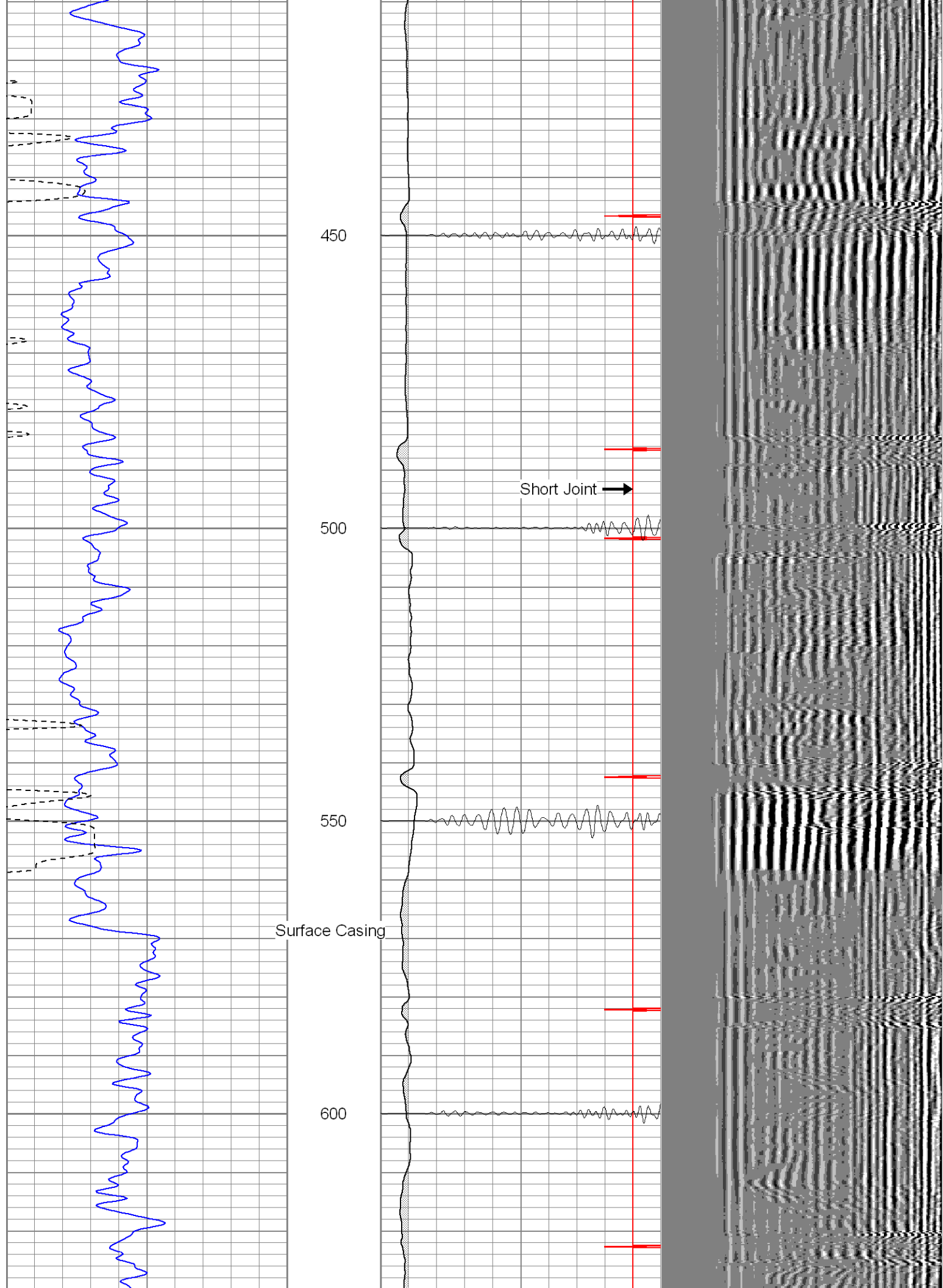
250

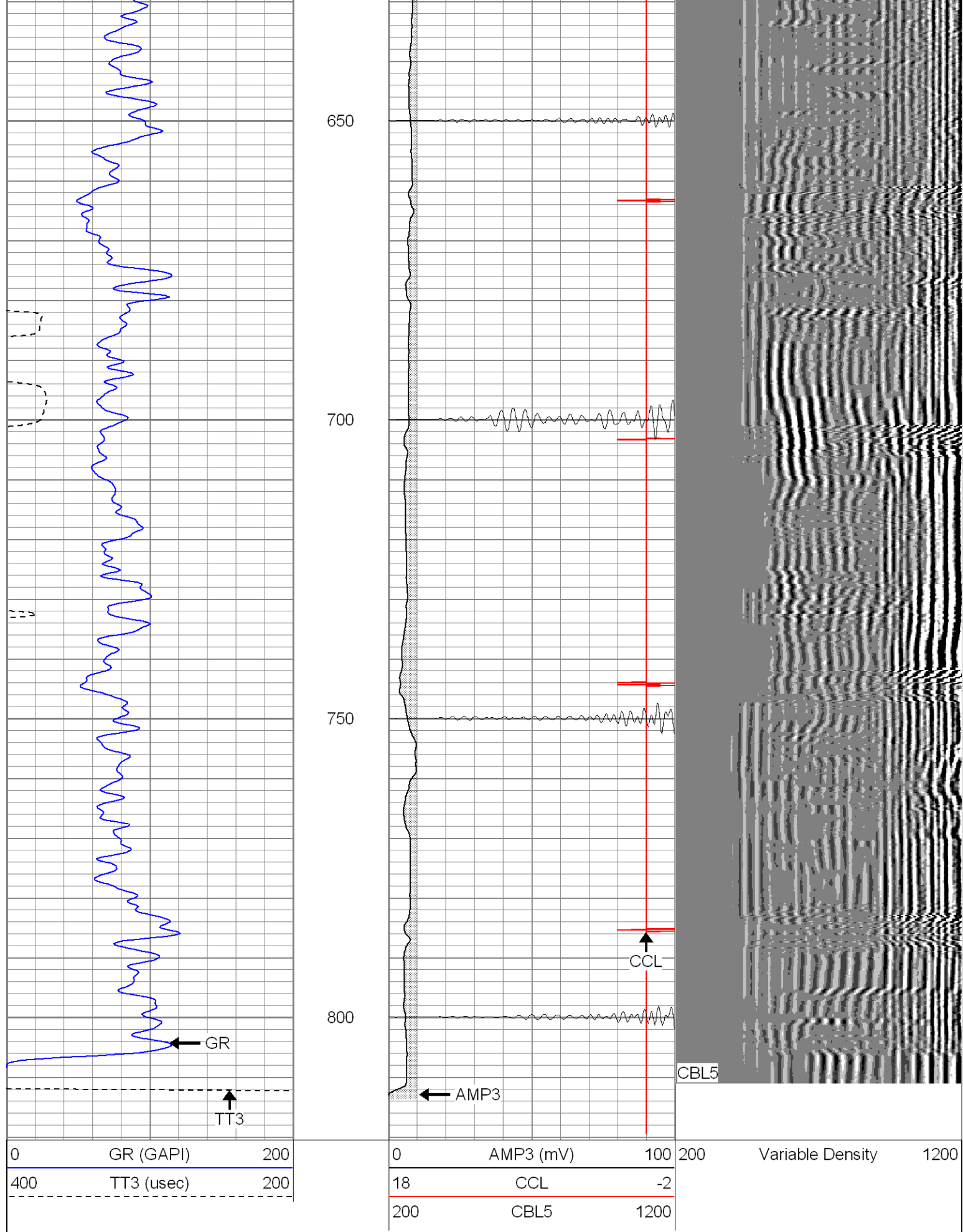
300

350

400

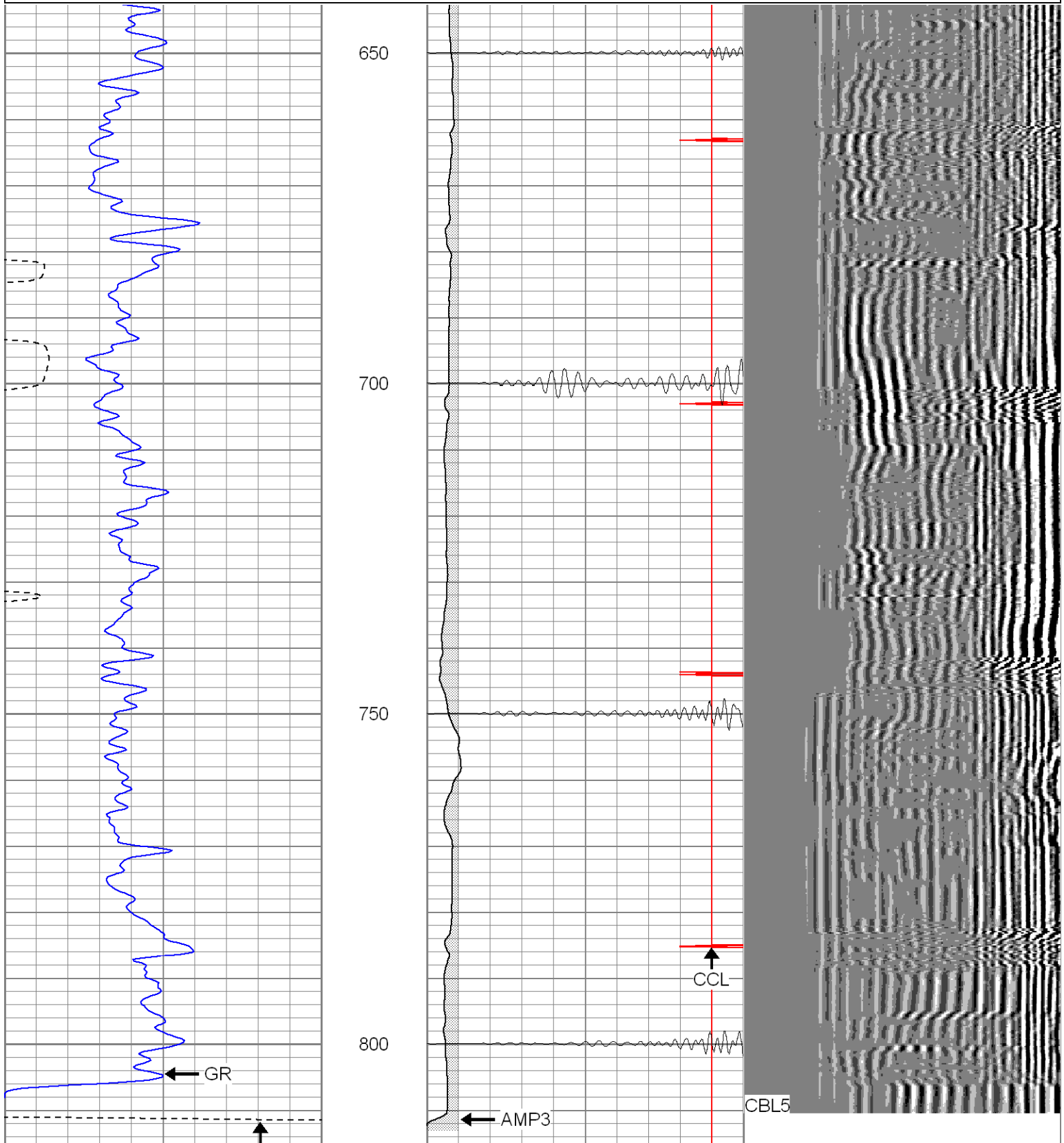






Database File: predator101005b.db
 Dataset Pathname: pass1
 Presentation Format: cblrt
 Dataset Creation: Mon Oct 10 14:00:18 2005 by Log Warrior 7.0 STD Cas
 Charted by: Depth in Feet scaled 1:240

0	GR (GAPI)	200	0	AMP3 (mV)	100	200	Variable Density	1200
400	TT3 (usec)	200	18	CCL	-2			
			200	CBL5	1200			



Cement Bond Log Calibration Report			
Serial Number:	Titan3		
Tool Model:	T3		
Performed:	Mon Oct 10 13:53:52 2005		
Depth:	0	ft	
Casing Diameter:	0	in	
	3' Spacing	5' Spacing	
Signal Zero:	1	1	mV
Calibrated Amplitude:	85	85	mV
Reading at Signal Zero:	0.02	0.01	V
Reading in Free Pipe:	1.3	2.3	V
Gain:	65.625	36.6812	
Offset:	-0.3125	0.633188	
Gamma Ray Calibration Report			
Serial Number:	Titan3		
Tool Model:	T2		
Performed:	Mon Oct 10 13:53:58 2005		
Calibrator Value:	1.0	GAPI	
Background Reading:	0.0	cps	
Calibrator Reading:	1.0	cps	
Sensitivity:	1.3000	GAPI/cps	