

Company XTO Energy Inc.		Company XTO Energy Inc.	
Well Golden Eagle 32-10		Well Golden Eagle 32-10	
Field Purgatoire River		Field Purgatoire River	
County Las Animas		County Las Animas	
State Colorado		State Colorado	
Location:		API # : 05 071 08651 00	Other Services
SEC 32 TWP 33S RGE 67W		CDL NEUTRON	
Permanent Datum	Ground Level	Elevation	7752'
Log Measured From	Ground Level		
Drilling Measured From	Ground Level		
Date		2-28-06	
Run Number	One		
Depth Driller	2455'		
Depth Logger	2455'		
Bottom Logged Interval	2453'		
Top Log Interval	Surface Casing		
Casing Driller	8 5/8" @ 541'		
Casing Logger	544'		
Bit Size	7 7/8"		
Type Fluid in Hole	Water		
Density / Viscosity	///		
pH / Fluid Loss	///		
Source of Sample	///		
Rm @ Meas. Temp	///		
Rmf @ Meas. Temp	///		
Rmc @ Meas. Temp	///		
Source of Rmf / Rmc	///		
Rm @ BHT	///		
Time Circulation Stopped	12:30 A.M.		
Time Logger on Bottom	3:10 A.M.		
Maximum Recorded Temperature	106 DEG F		
Equipment Number	T720		
Location	Trinidad		
Recorded By	M. Norton		
Witnessed By	Mr. Dalton King		

<<< Fold Here >>>

All interpretations are opinions based on inferences from electrical or other measurements and we cannot and do not guarantee the accuracy or correctness of any interpretation, and we shall not, except in the case of gross or willful negligence on our part, be liable or responsible for any loss, costs, damages, or expenses incurred or sustained by anyone resulting from any interpretation made by any of our officers, agents or employees. These interpretations are also subject to our general terms and conditions set out in our current Price Schedule.

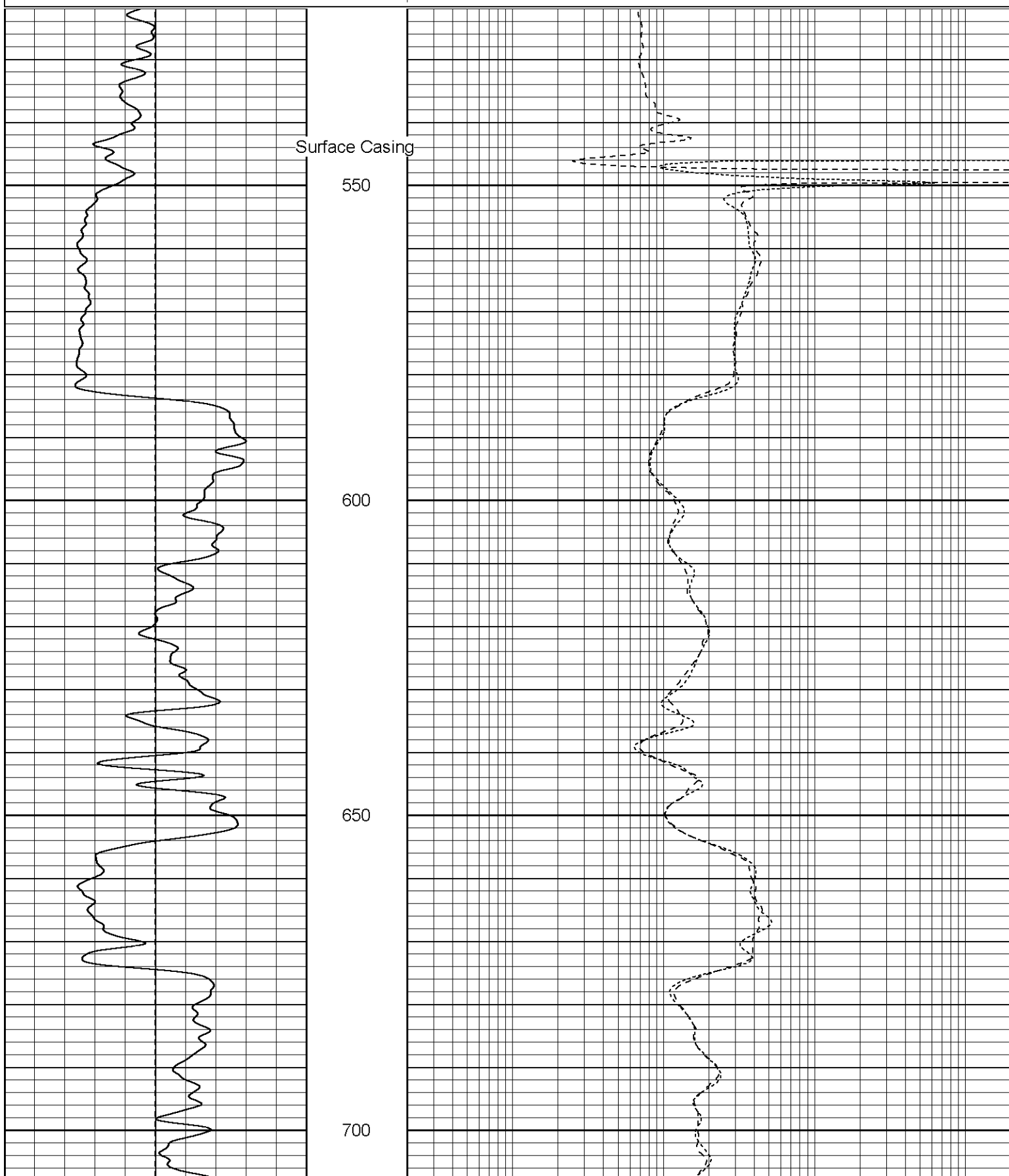
Comments

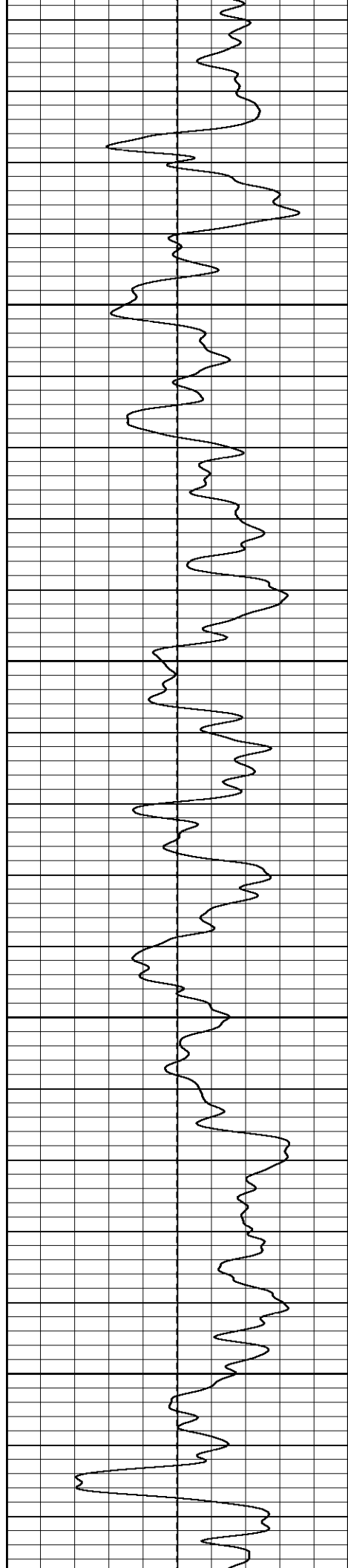
Well Directions:
First Bosque Entrance, Right On Cherry Canyon, Stay Left
Thru Gate, Stay On Main Road, First Right (Hard Right), Next Left To Location.

Database File: xtoge3210.db
Dataset Pathname: pass2.2
Presentation Format: dil
Dataset Creation: Tue Feb 28 07:22:36 2006 by Calc Warrior 7.0 STD Ope
Charted by: Depth in Feet scaled 1:240

0	GR (GAPI)	200
-100	SP (mV)	100

0.2	RILM (Ohm-m)	2000
0.2	RILD (Ohm-m)	2000
0.2	RLL3 (Ohm-m)	2000



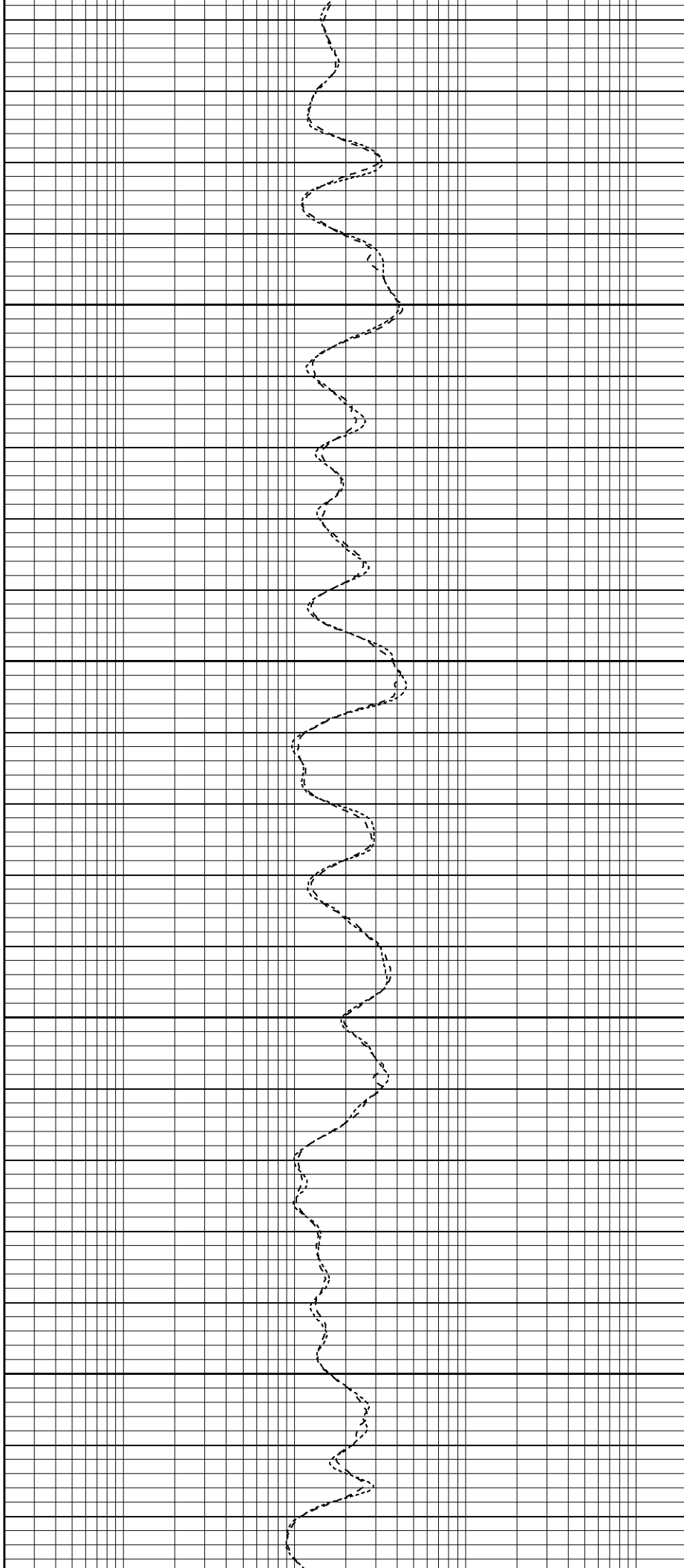


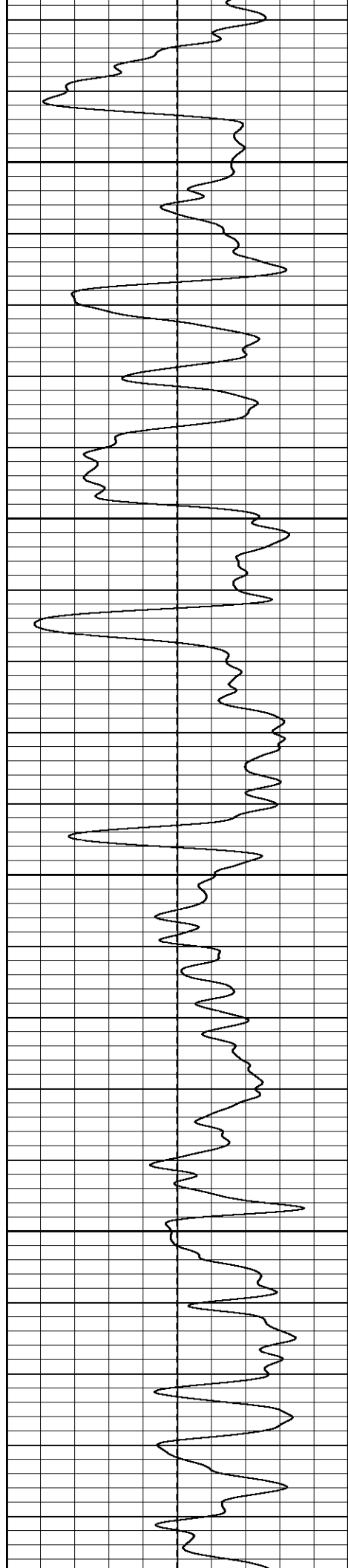
750

800

850

900



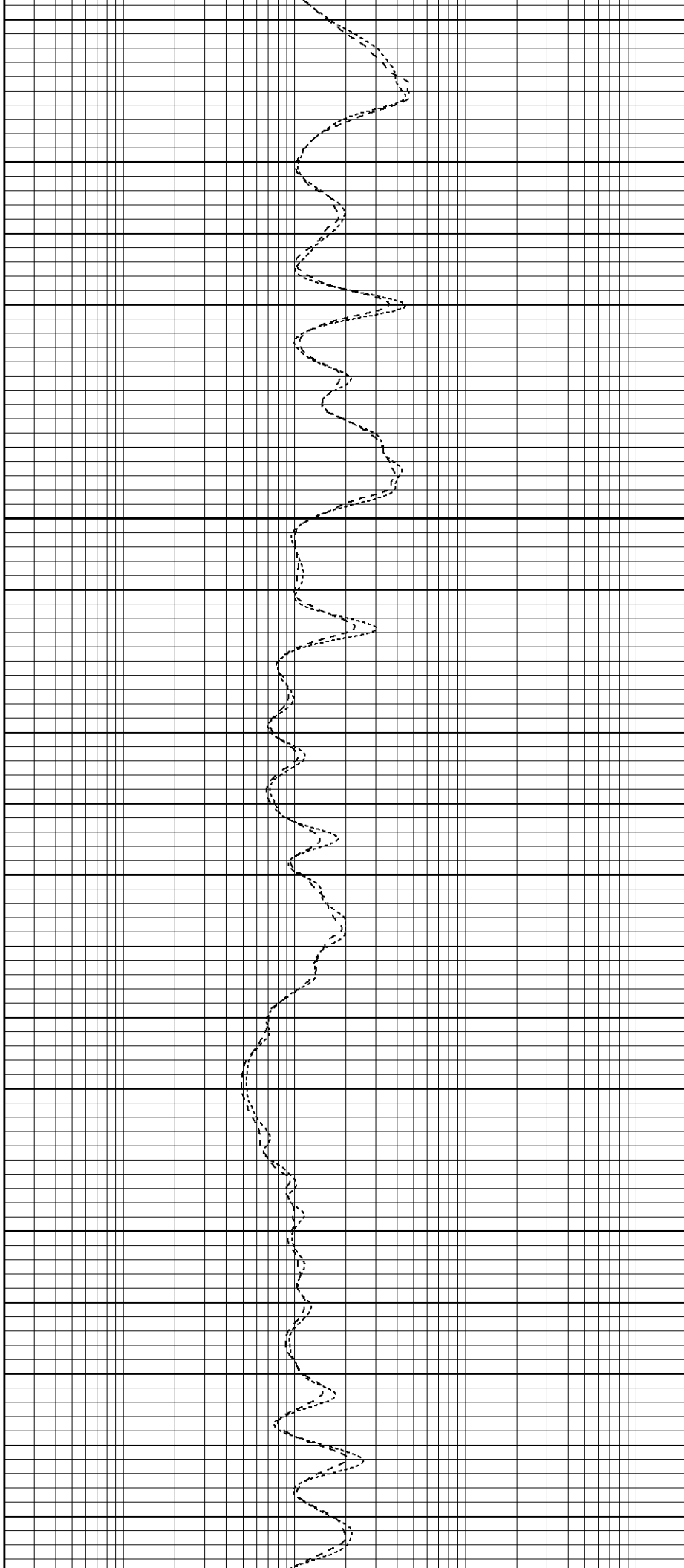


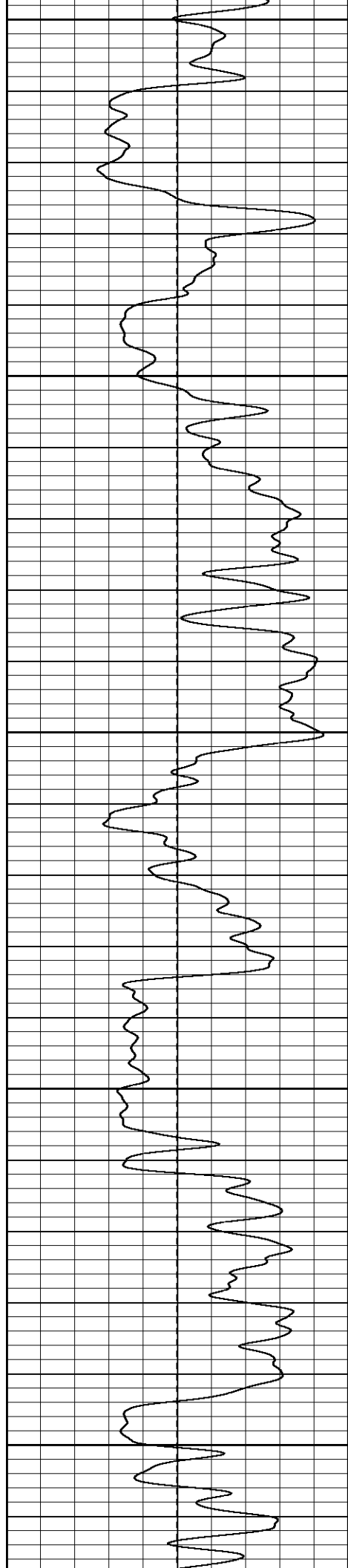
950

1000

1050

1100





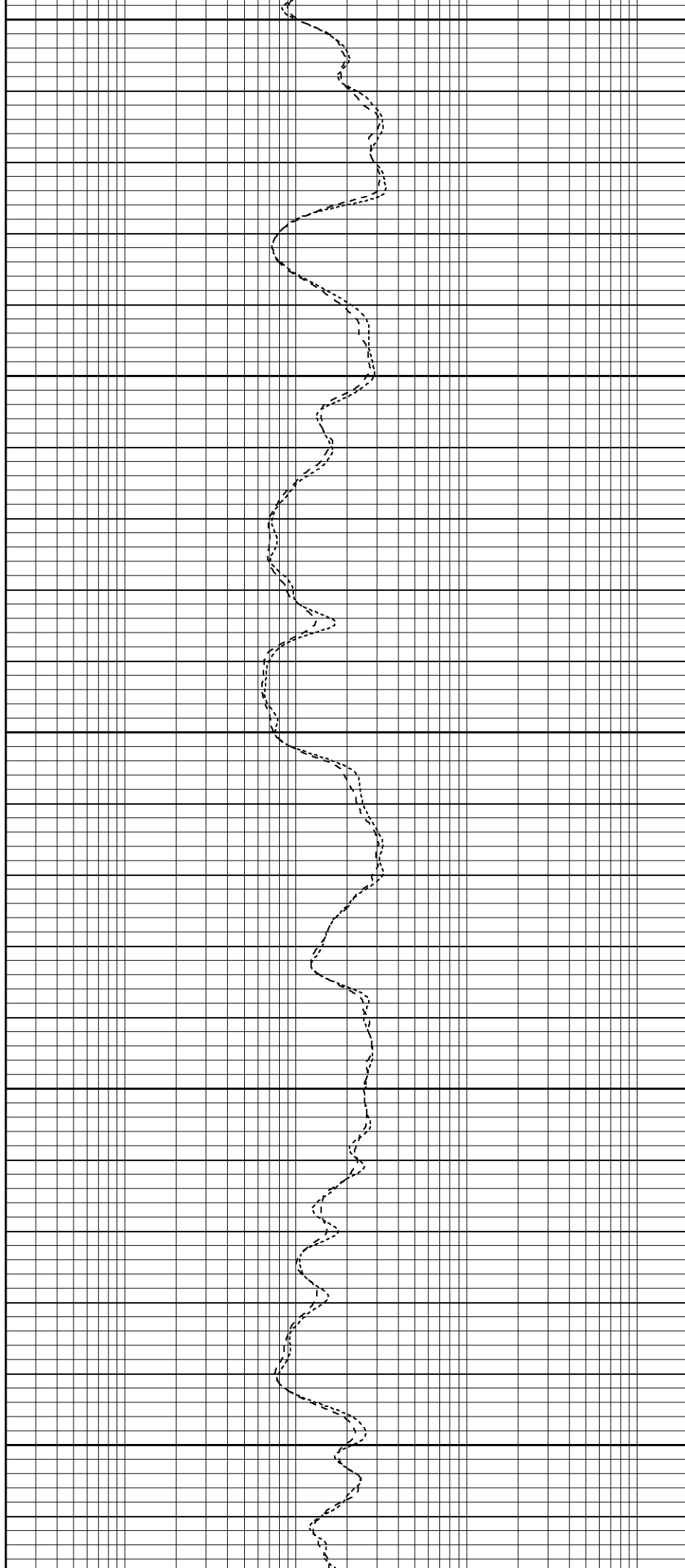
1150

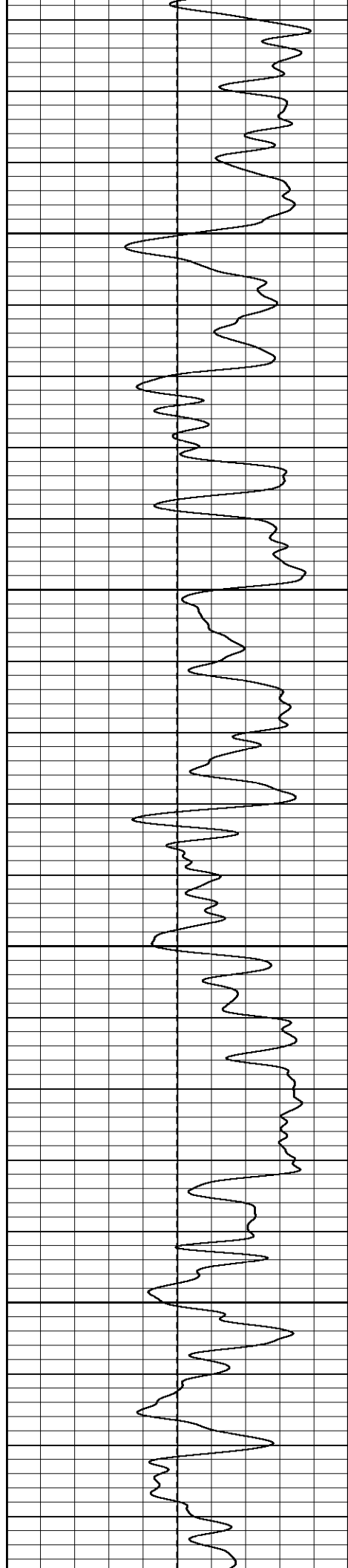
1200

1250

1300

1350



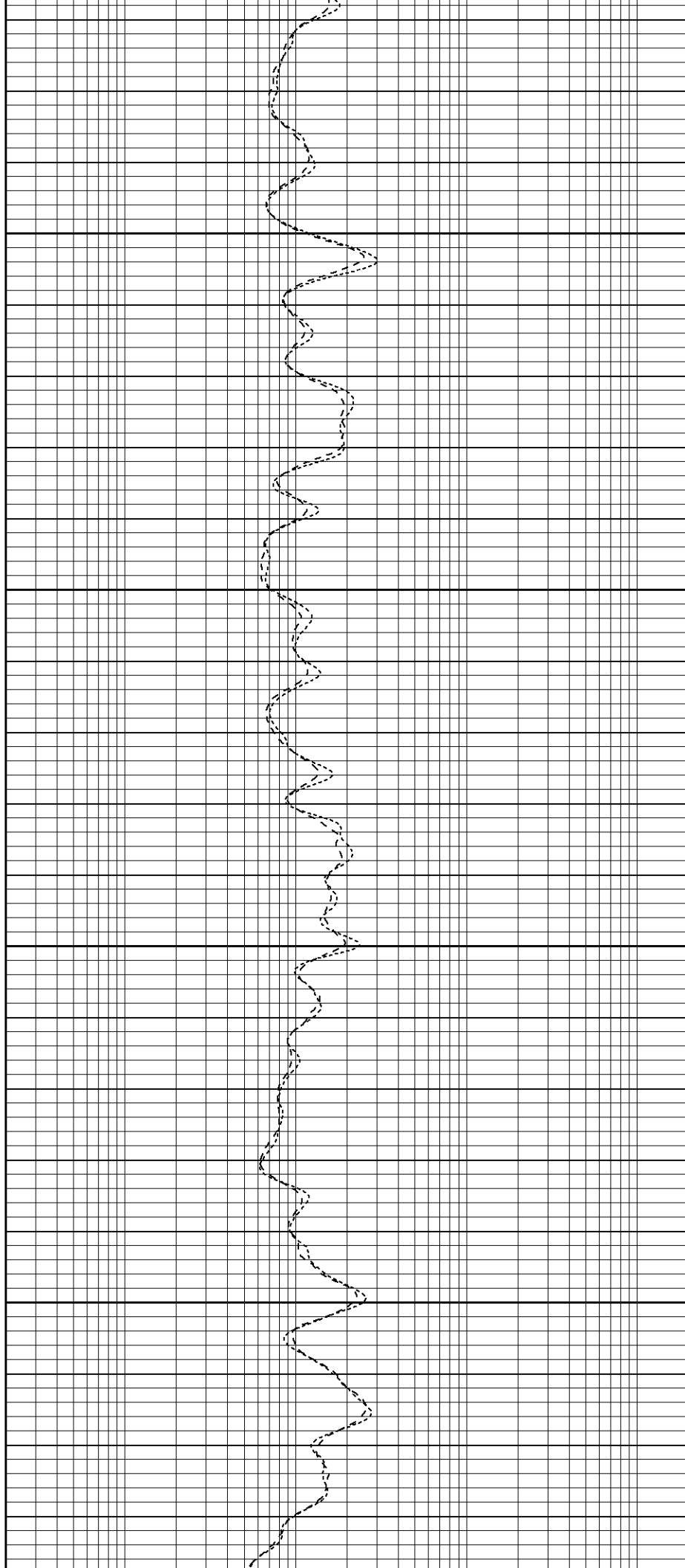


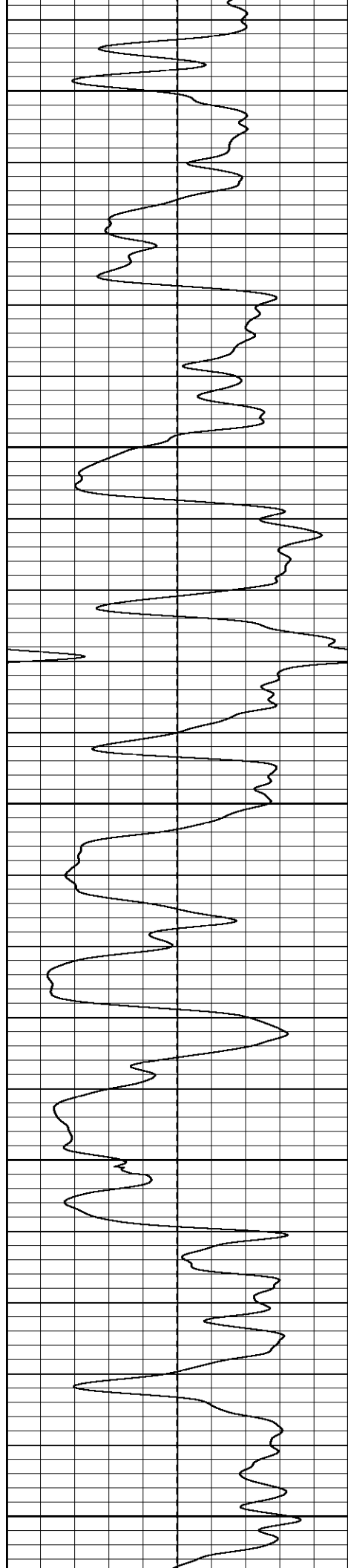
1400

1450

1500

1550





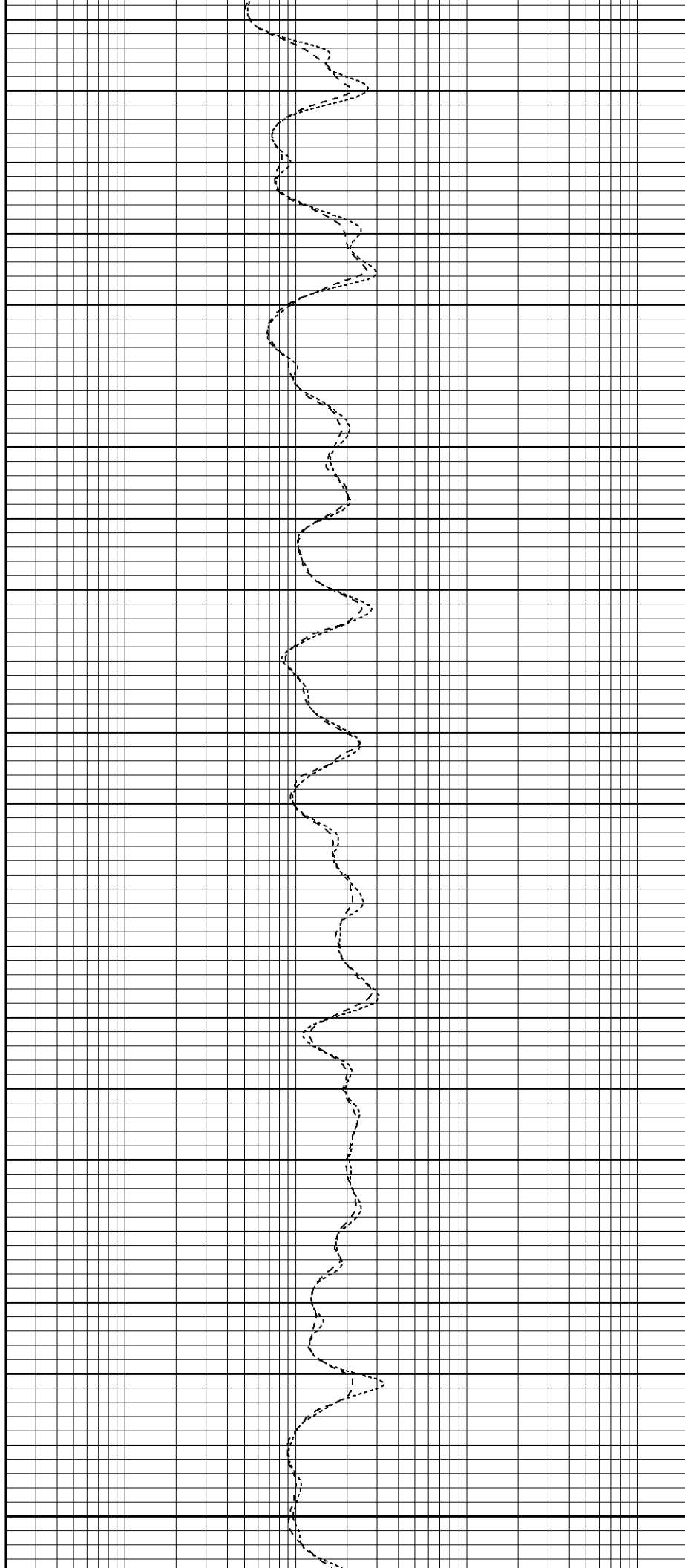
1600

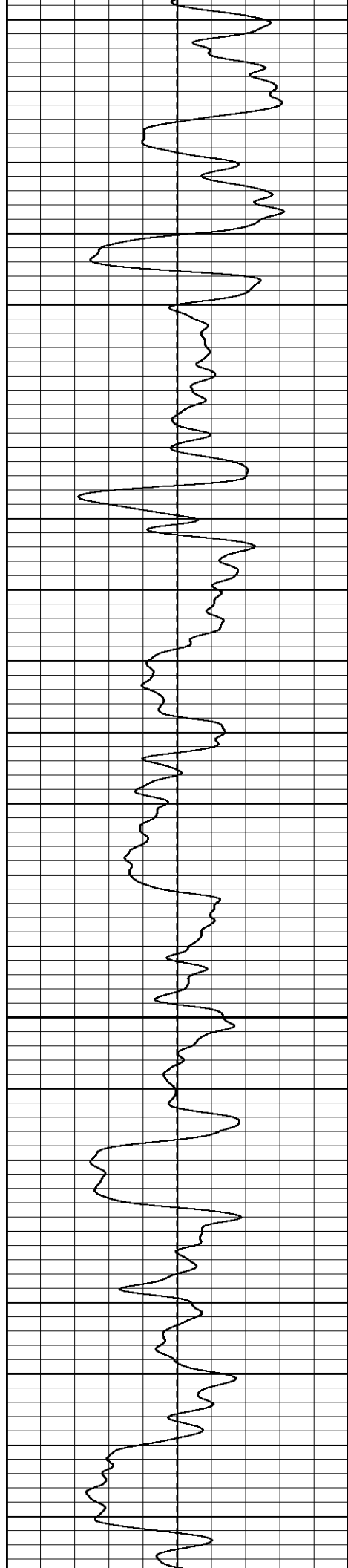
1650

1700

1750

1800



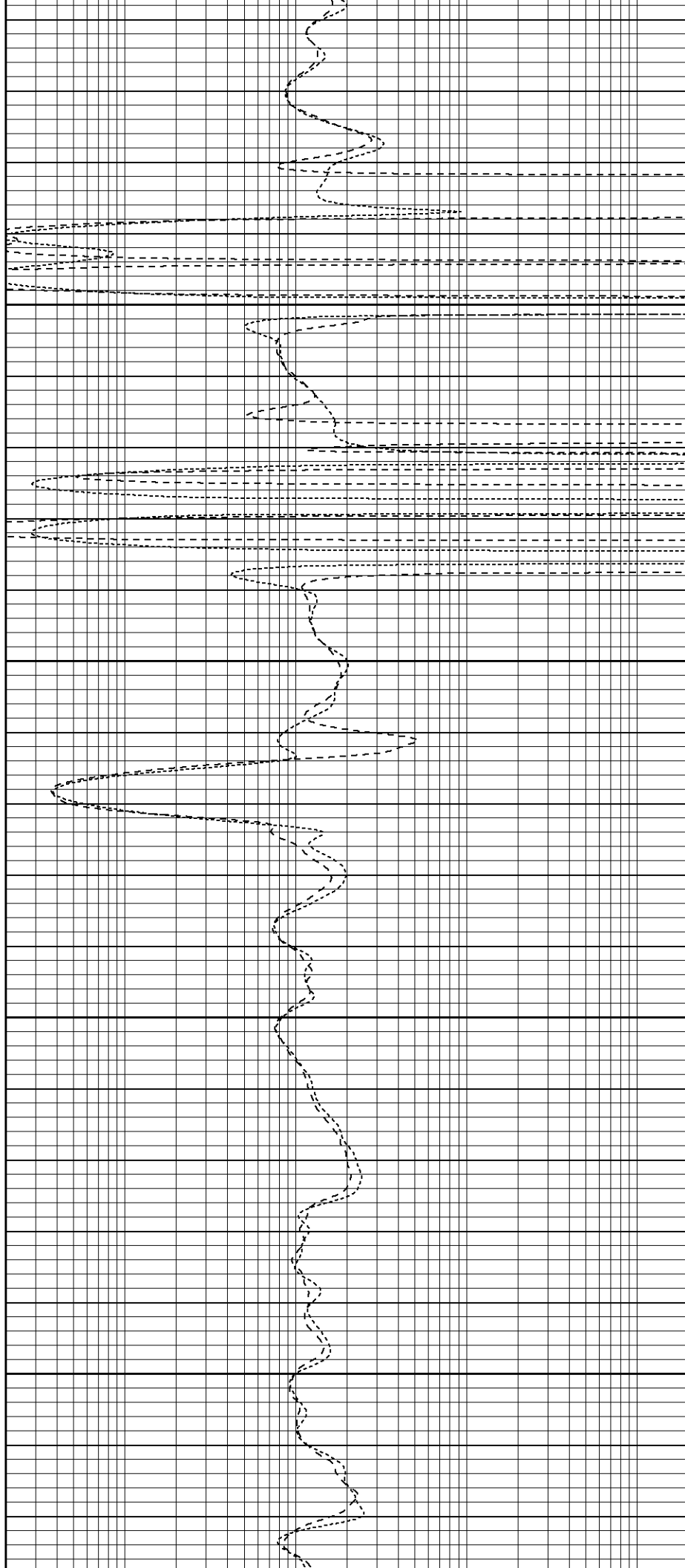


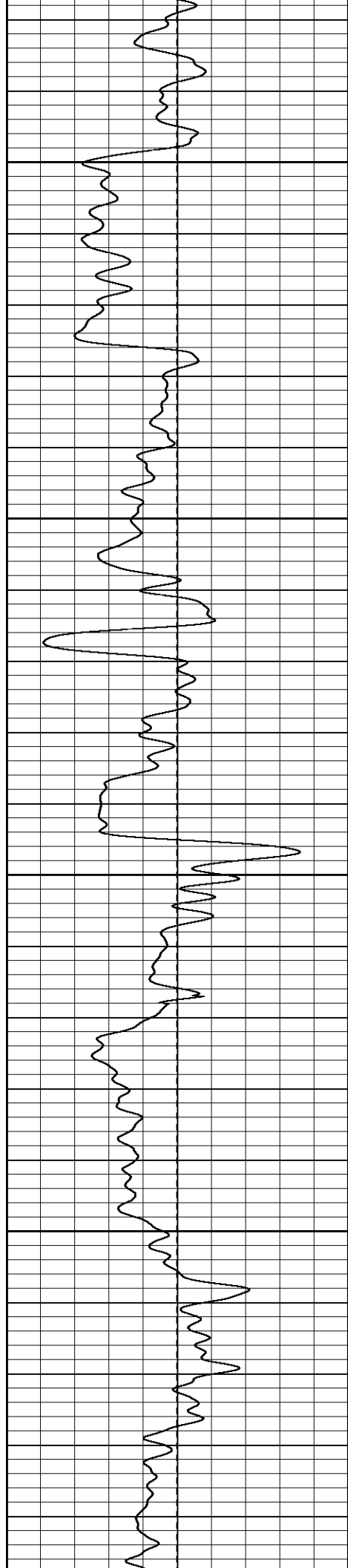
1850

1900

1950

2000



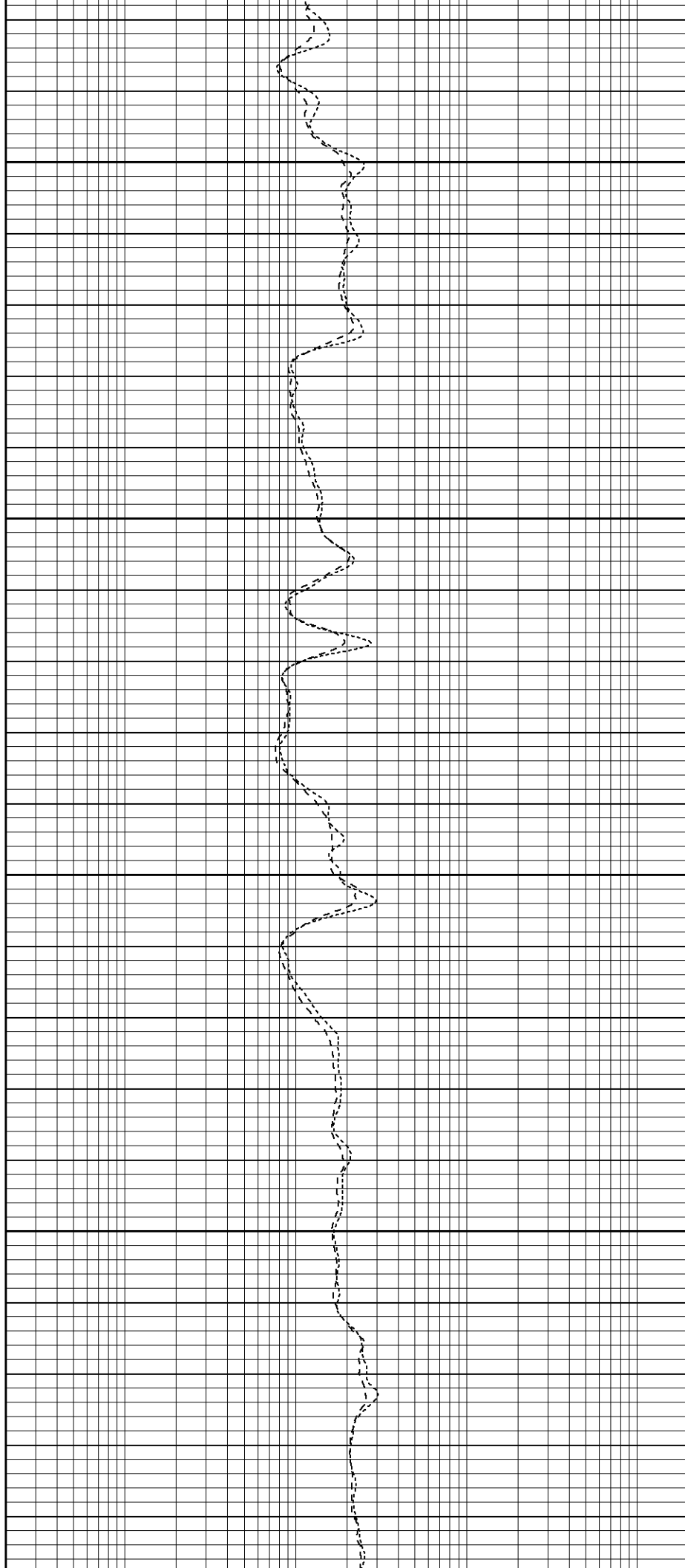


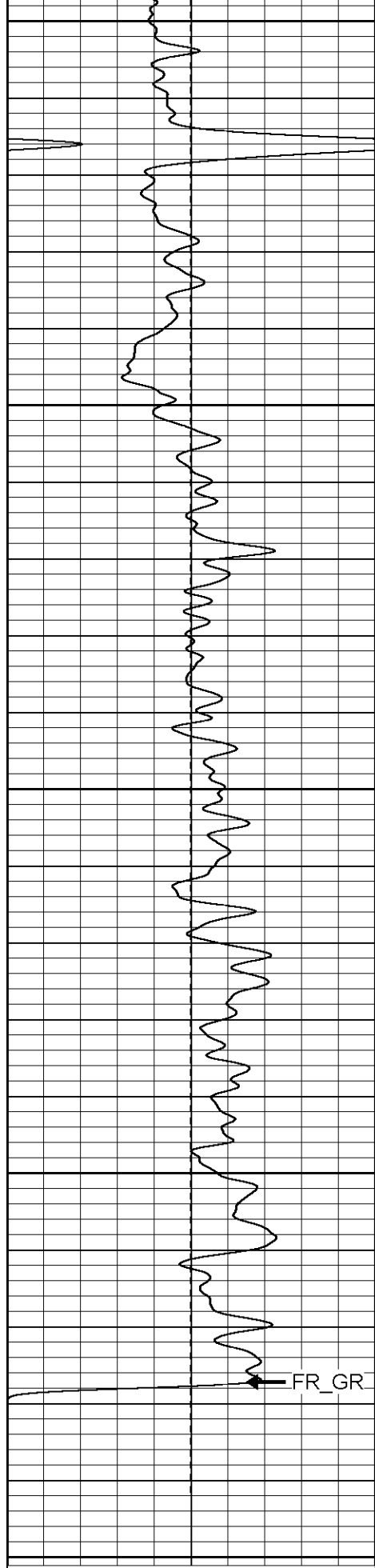
2050

2100

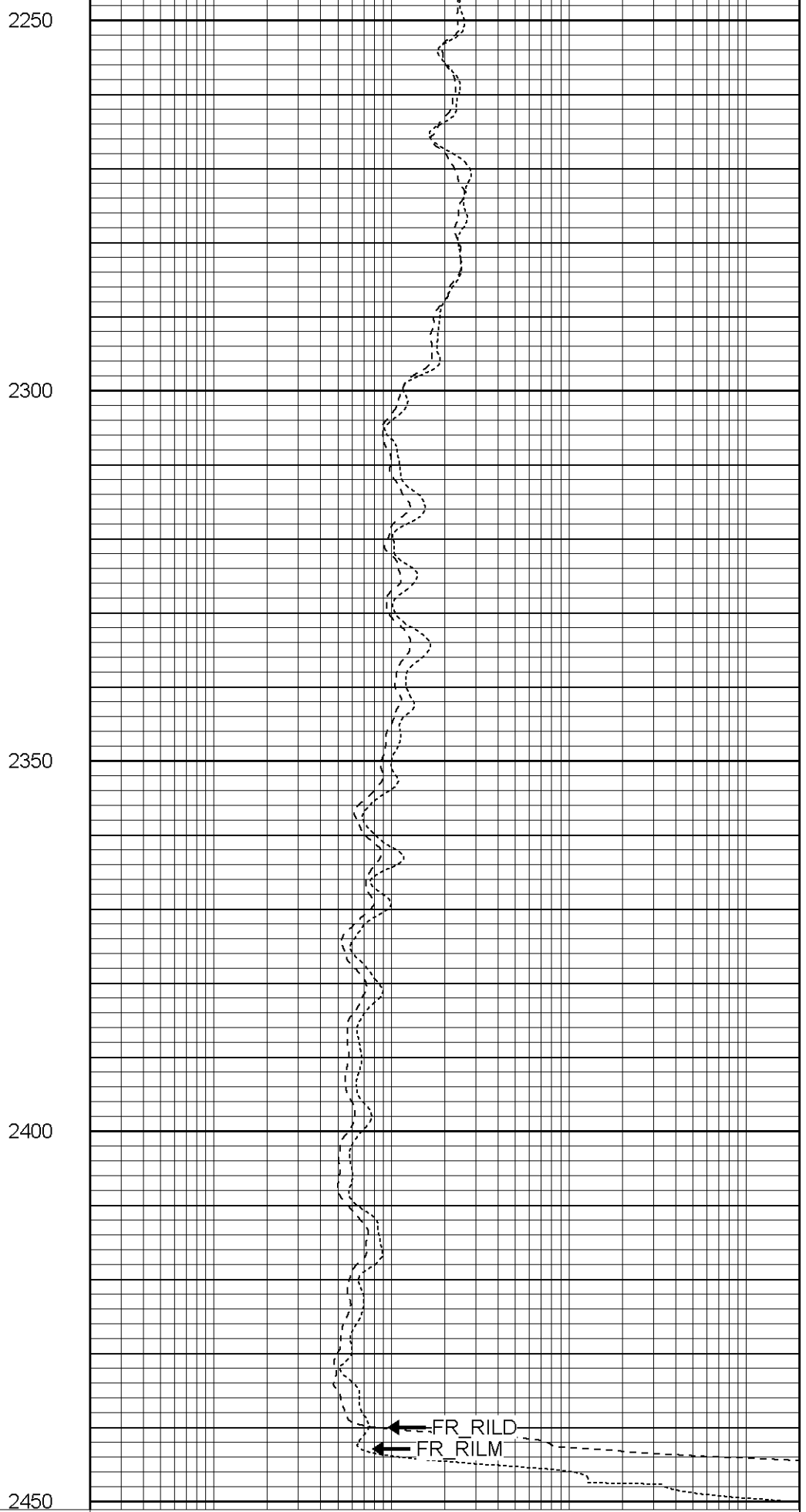
2150

2200





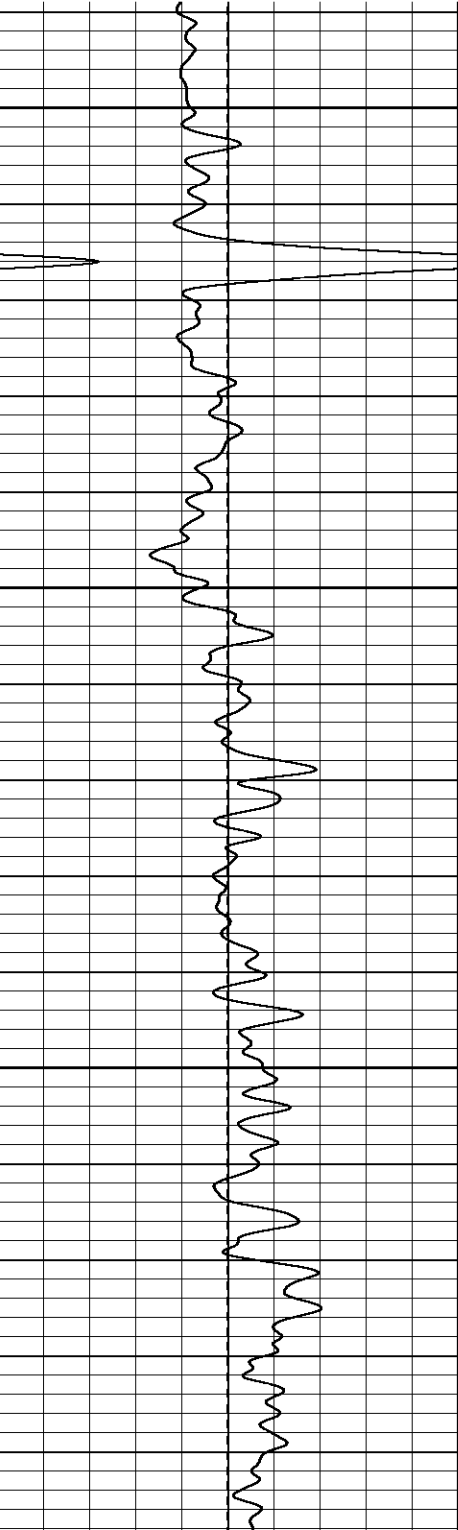
0	GR (GAPI)	200
-100	SP (mV)	100



0.2	RILM (Ohm-m)	2000
0.2	RILD (Ohm-m)	2000
0.2	RLL3 (Ohm-m)	2000

Database File: xtoge3210.db
Dataset Pathname: pass1.2
Presentation Format: dil
Dataset Creation: Tue Feb 28 07:26:01 2006 by Calc Warrior 7.0 STD Ope
Charted by: Depth in Feet scaled 1:240

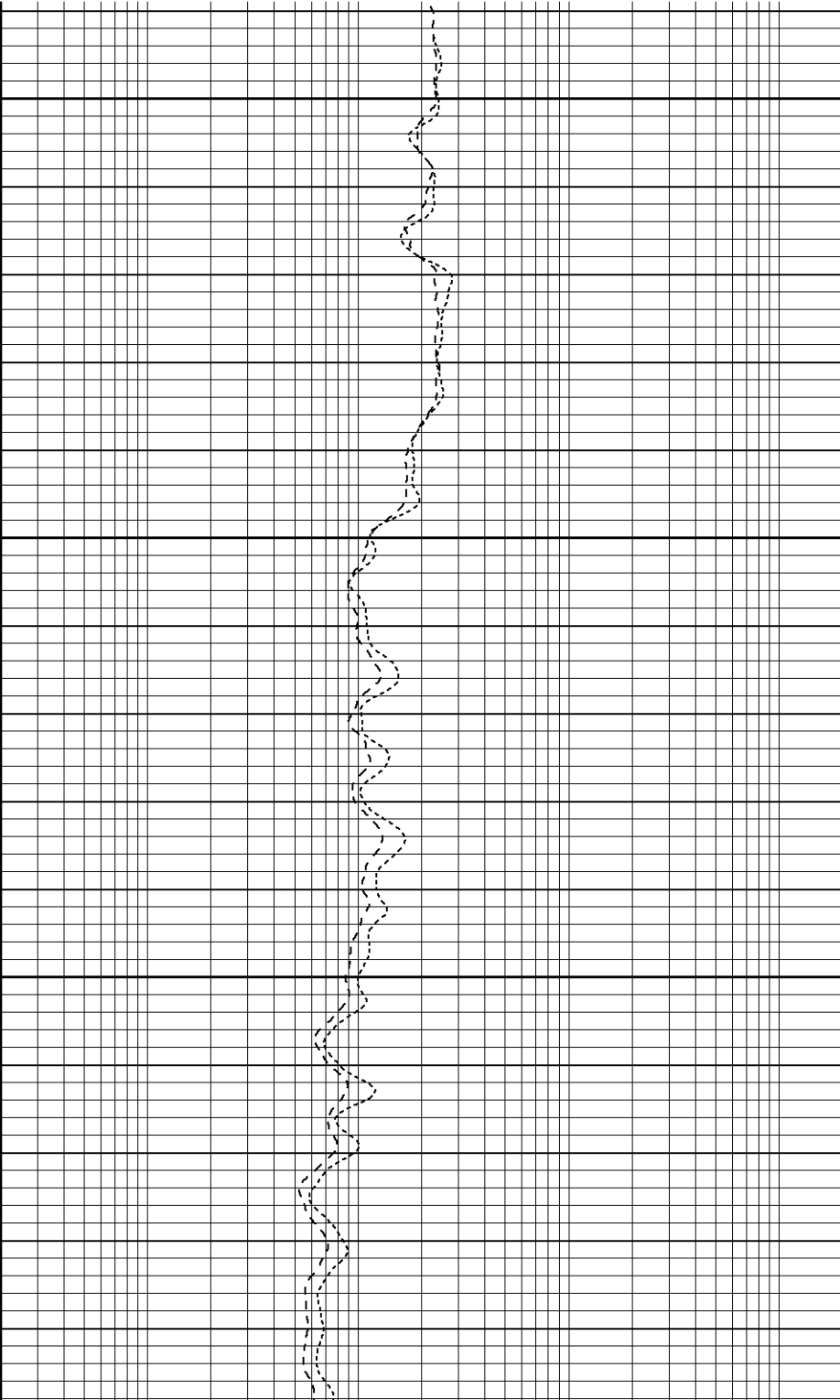
0	GR (GAPI)	200	0.2	RILM (Ohm-m)	2000
-100	SP (mV)	100	0.2	RILD (Ohm-m)	2000
			0.2	RLL3 (Ohm-m)	2000

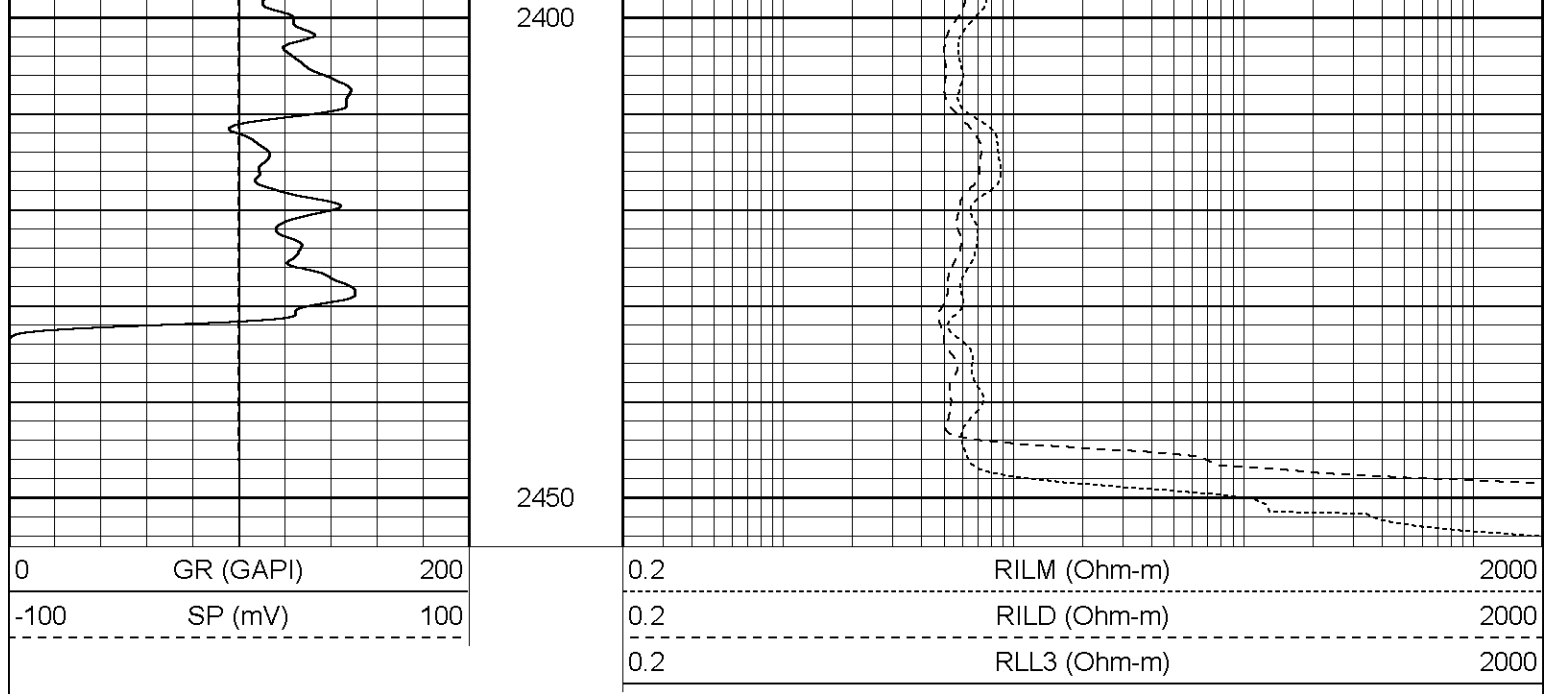


2250

2300

2350





Dual Induction Calibration Report

Serial-Model: 5375-G
 Surface Cal Performed: Mon Feb 13 13:52:53 2006
 Downhole Cal Performed: Tue Feb 14 23:23:54 2006

Surface Calibration

Readings				References			Results	
Loop:	Air	Loop		Air	Loop		m	b
Deep	0.000	0.633	V	0.000	500.000	mmho-m	789.538	0.000
Medium	-0.010	0.752	V	0.000	550.000	mmho-m	722.258	7.223
Internal:	Zero	Cal		Zero	Cal		m	b
Deep	0.012	0.636	V	0.000	500.000	mmho-m	800.610	-9.578
Medium	0.016	0.752	V	0.000	550.000	mmho-m	747.389	-12.066

Downhole Calibration

Readings				References			Results	
Internal:	Zero	Cal		Zero	Cal		m	b
Deep	1.512	503.799	mmho-m	0.280	502.577	mmho-m	1.000	-1.232
Medium	0.922	551.464	mmho-m	0.370	550.401	mmho-m	0.999	-0.551
Shallow	2.522	0.024	V	500.000	2.000	Ohm-m	135.000	0.000

Gamma Ray Calibration Report

Serial Number: 2001
 Tool Model: OH
 Performed: Tue Feb 14 10:15:47 2006
 Calibrator Value: 1.0 GAPI
 Background Reading: 0.0 cps
 Calibrator Reading: 1.0 cps
 Sensitivity: 0.2000 GAPI/cps

[illegible]