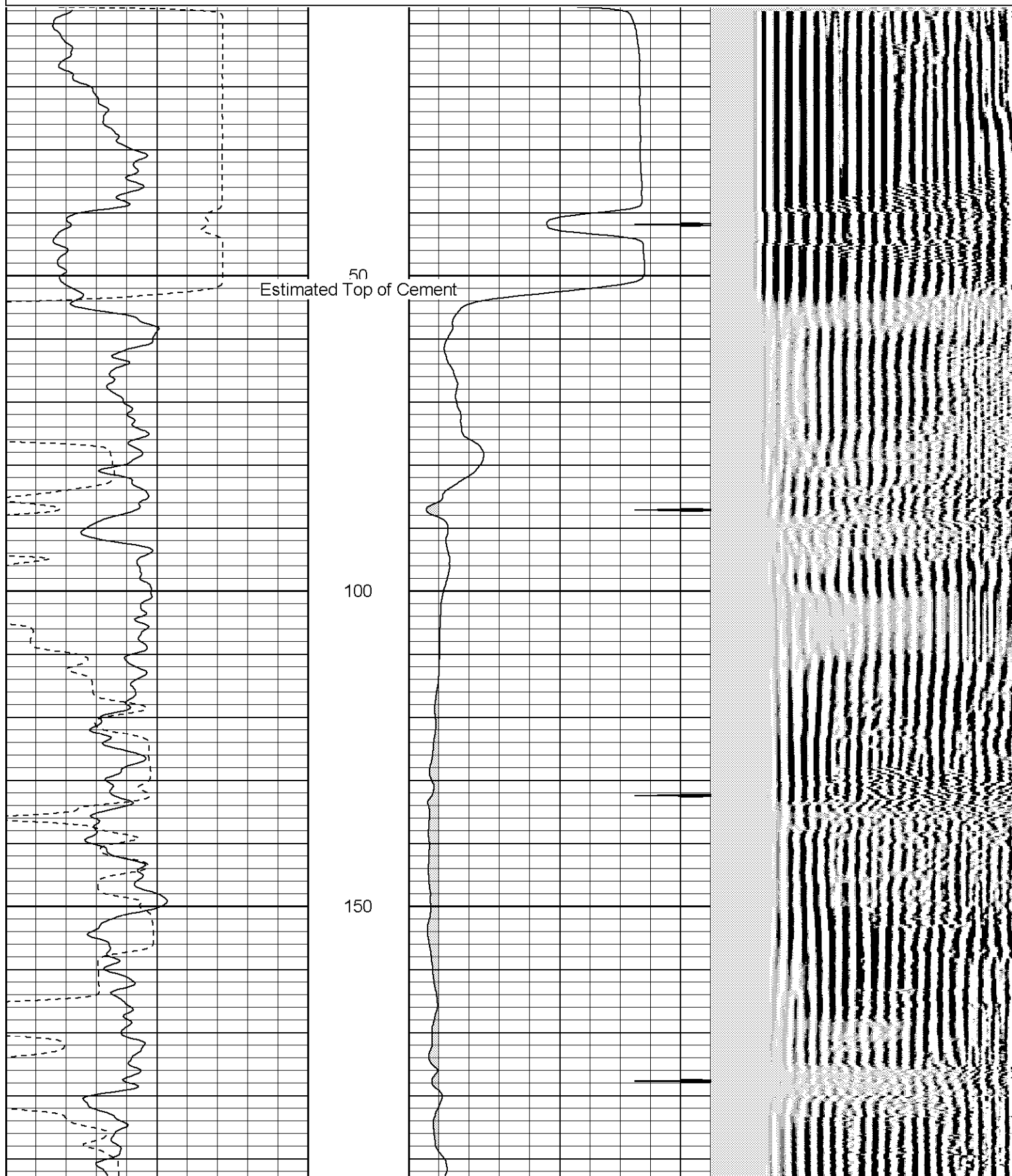


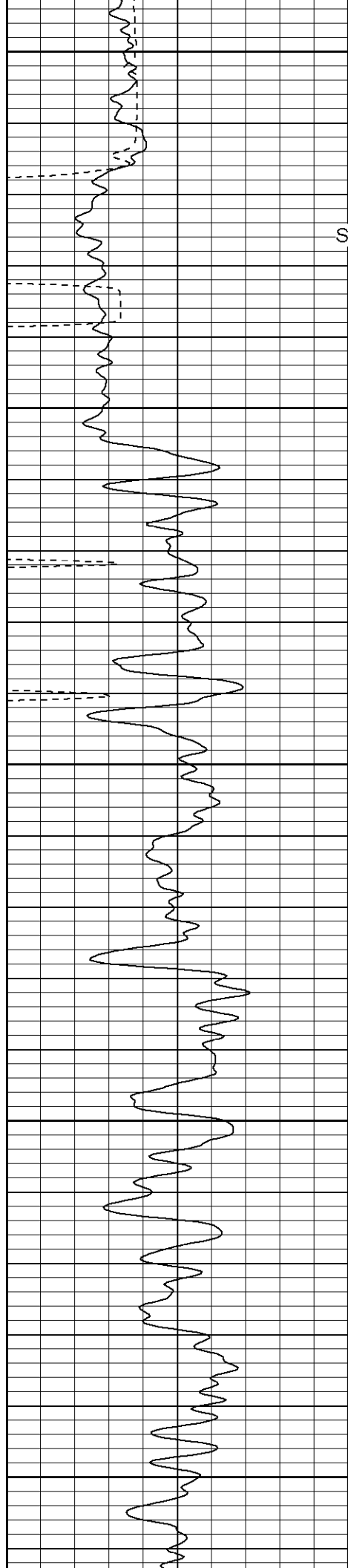
CEMENT BOND LOG

<<< Fold Here >>>
All interpretations are opinions based on inferences from electrical or other measurements and we cannot and do not guarantee the accuracy or correctness of any interpretation, and we shall not, except in the case of gross or willful negligence on our part, be liable or responsible for any loss, costs, damages, or expenses incurred or sustained by anyone resulting from any interpretation made by any of our officers, agents or employees. These interpretations are also subject to our general terms and conditions set out in our current Price Schedule.
Comments
<p>Well Directions: ThreeMiles west Of weston Turn Left, At Y Stay Left On Ceruila Canyon, At Windmill Stay Left, First Location.</p>

Database File: xtoge3108032906b.db
Dataset Pathname: pass3.1
Presentation Format: cblrt
Dataset Creation: Wed Mar 29 15:07:23 2006 by Calc Warrior 7.0 STD Ope
Charted by: Depth in Feet scaled 1:240

0	GR (GAPI)	200	0	AMP3 (mV)	100	200	Variable Density	1200
400	TT3 (usec)	200	18	CCL	-2			
<hr style="border-top: 1px dashed black;"/>								





Surface Casing

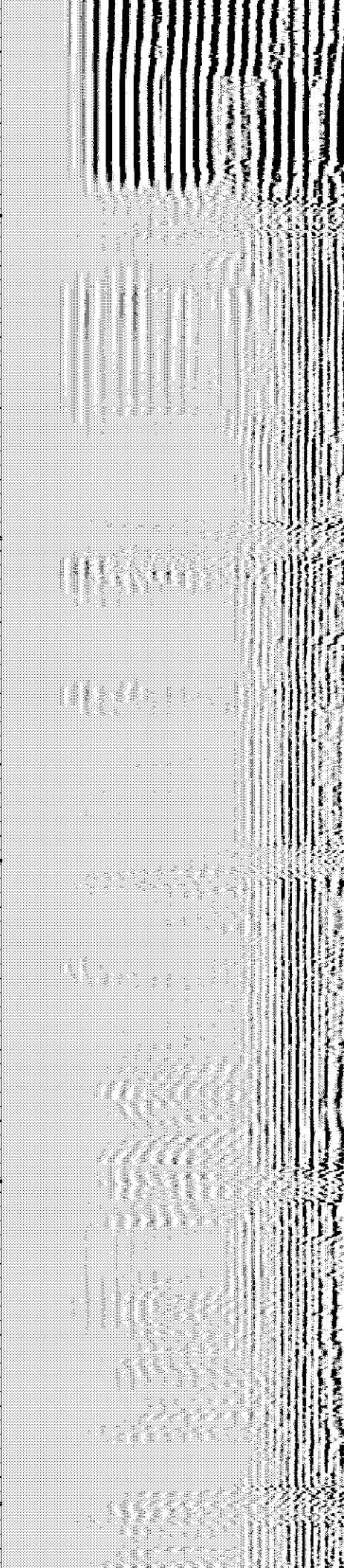
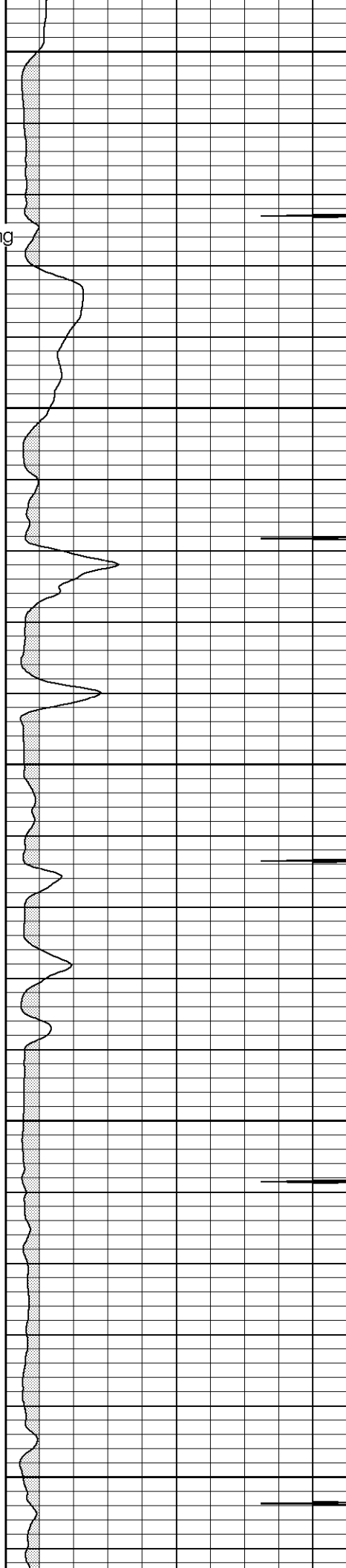
200

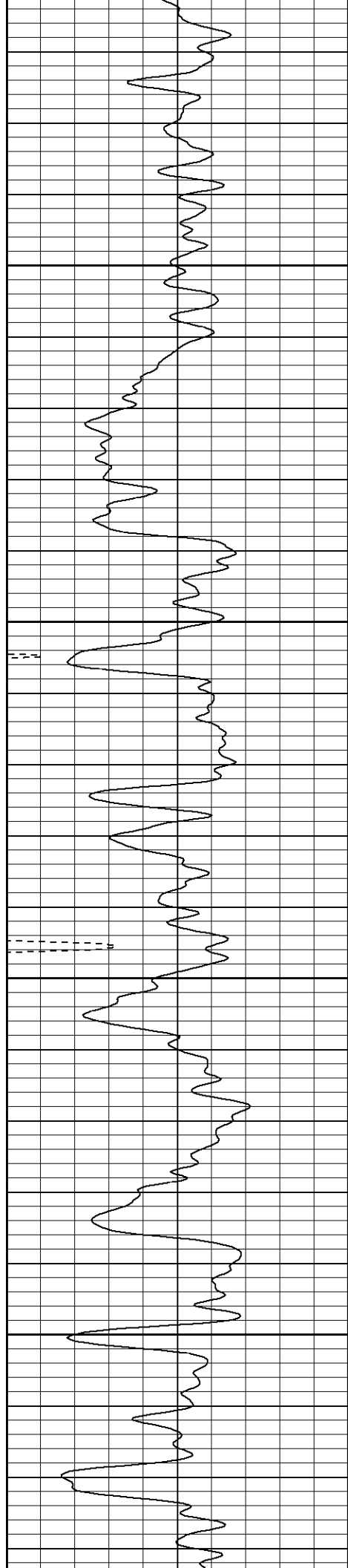
250

300

350

400



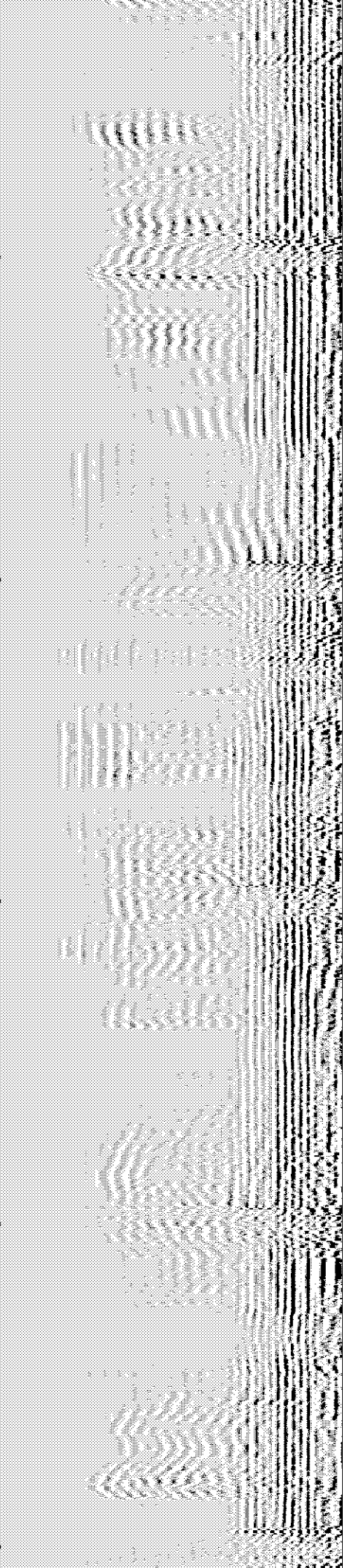
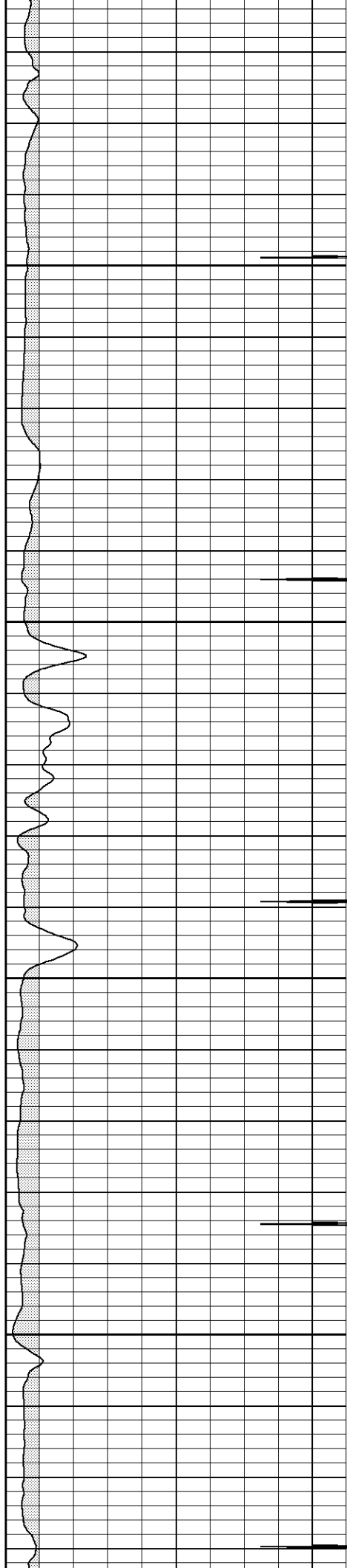


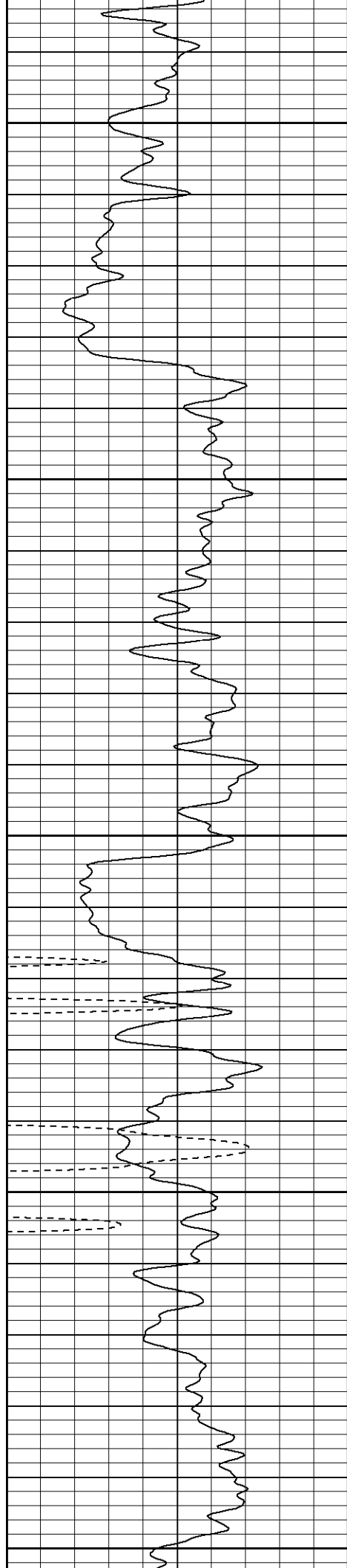
450

500

550

600





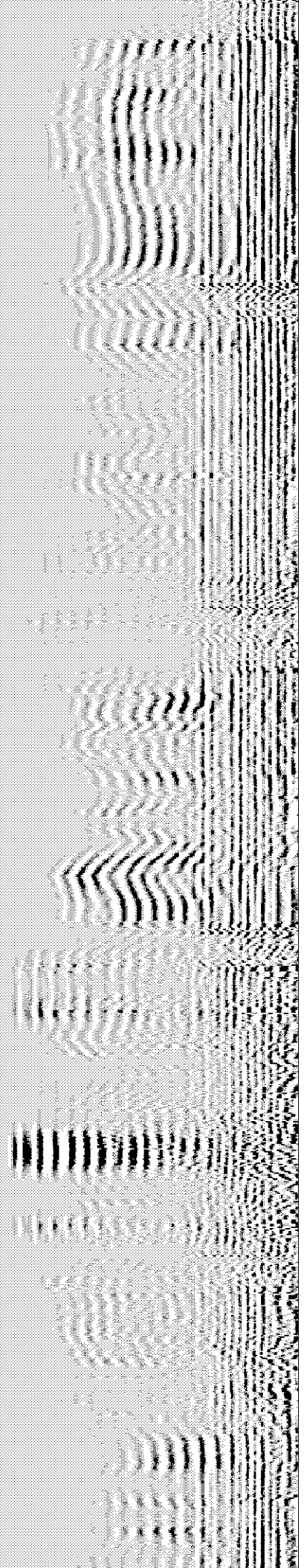
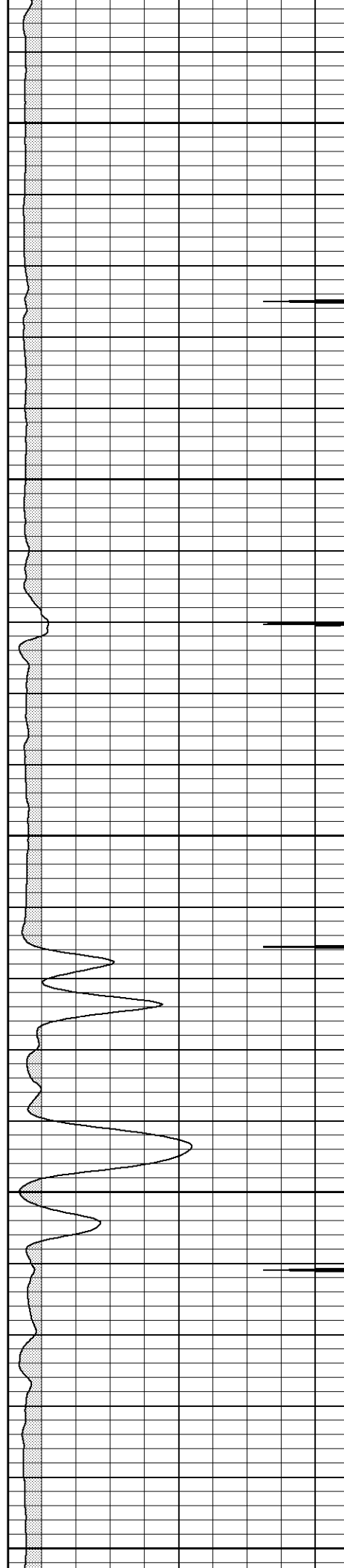
650

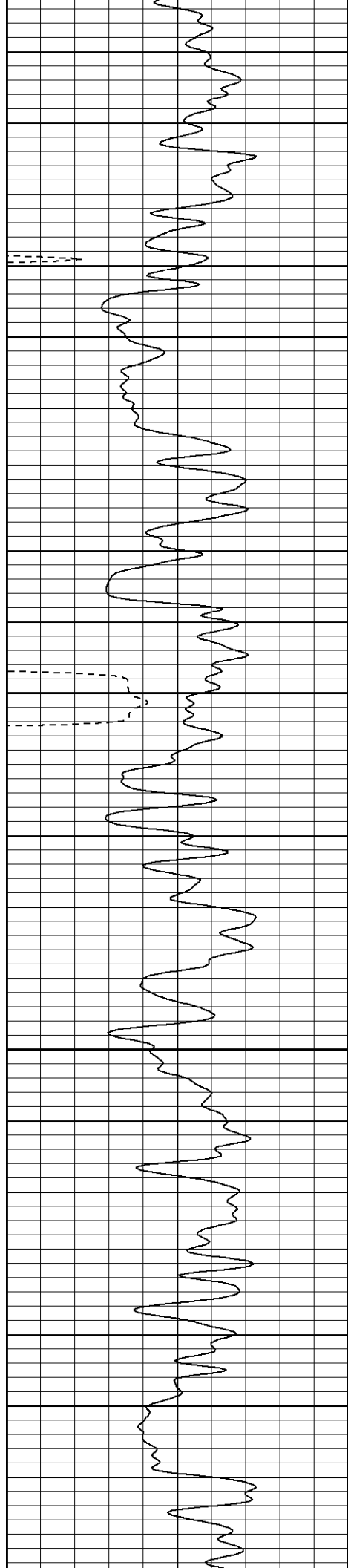
700

750

800

850



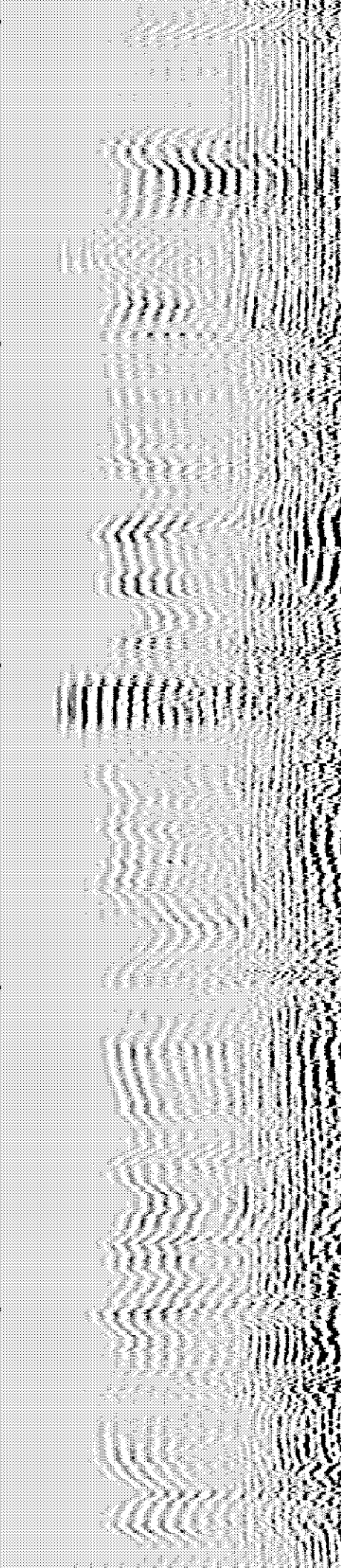
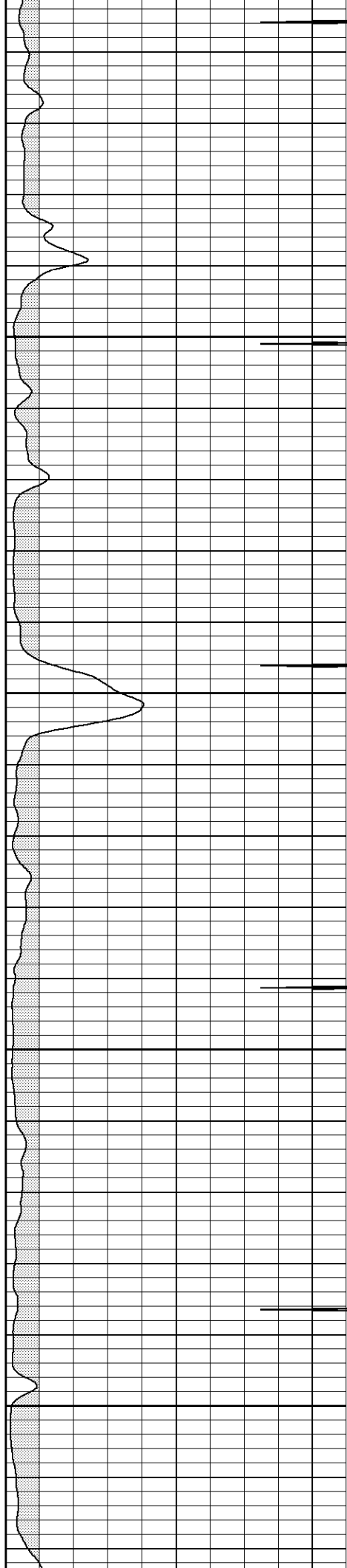


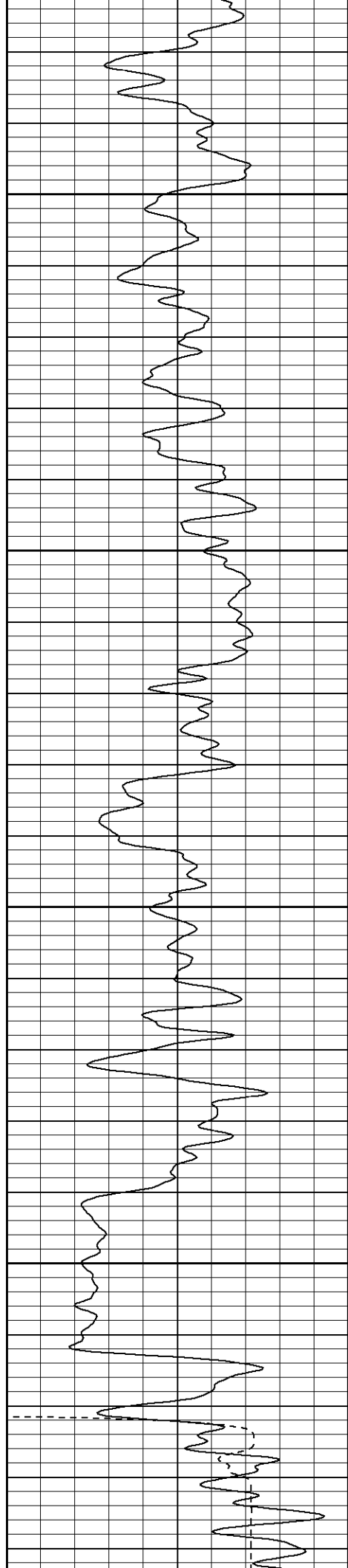
900

950

1000

1050





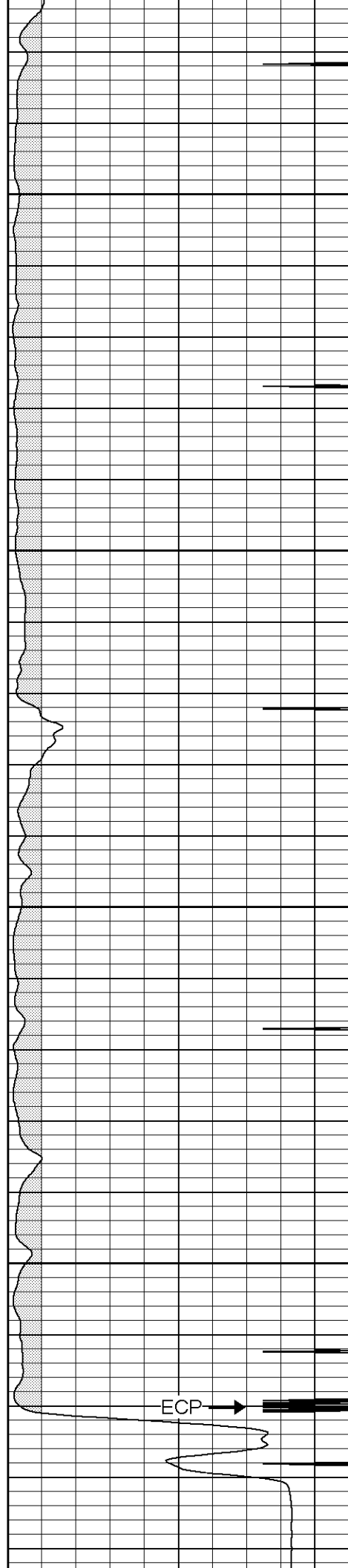
1100

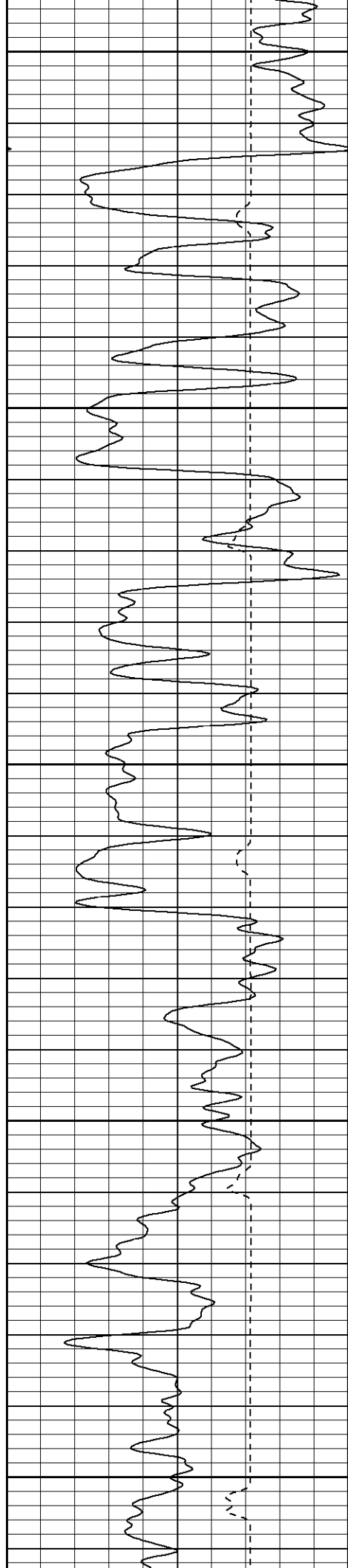
1150

1200

1250

ECP →





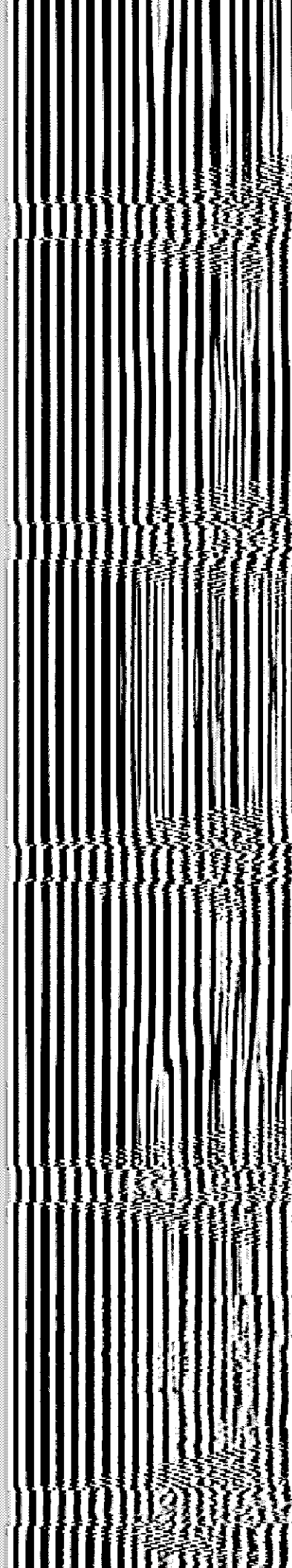
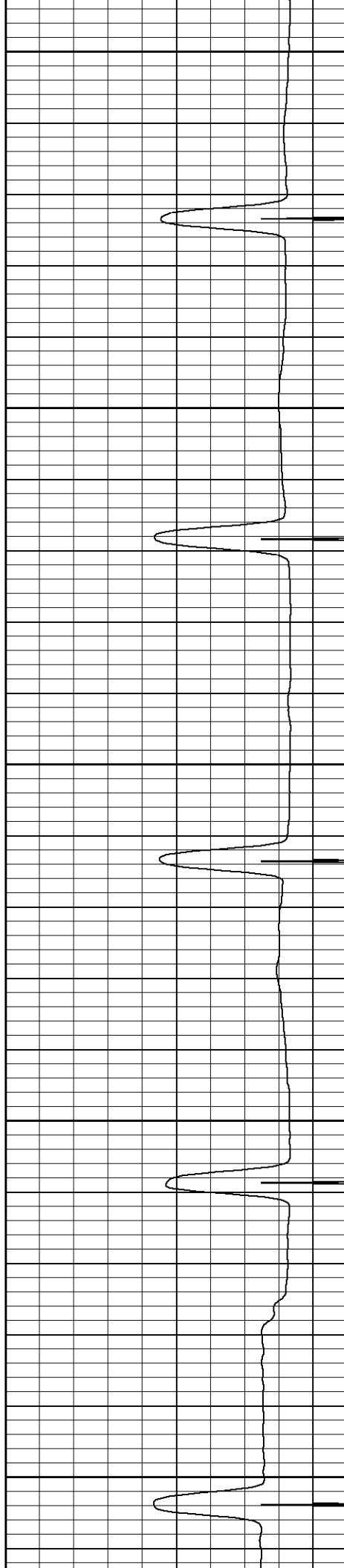
1300

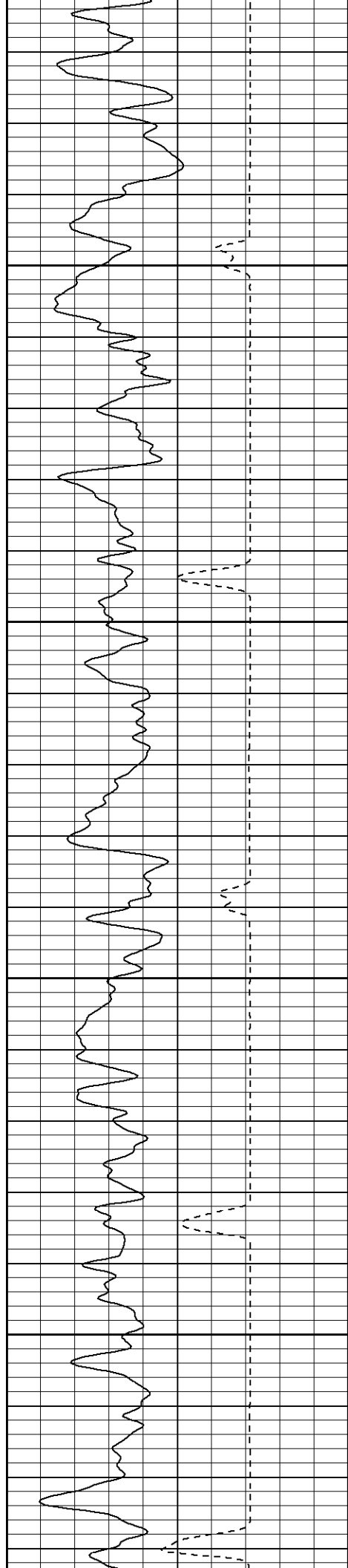
1350

1400

1450

1500



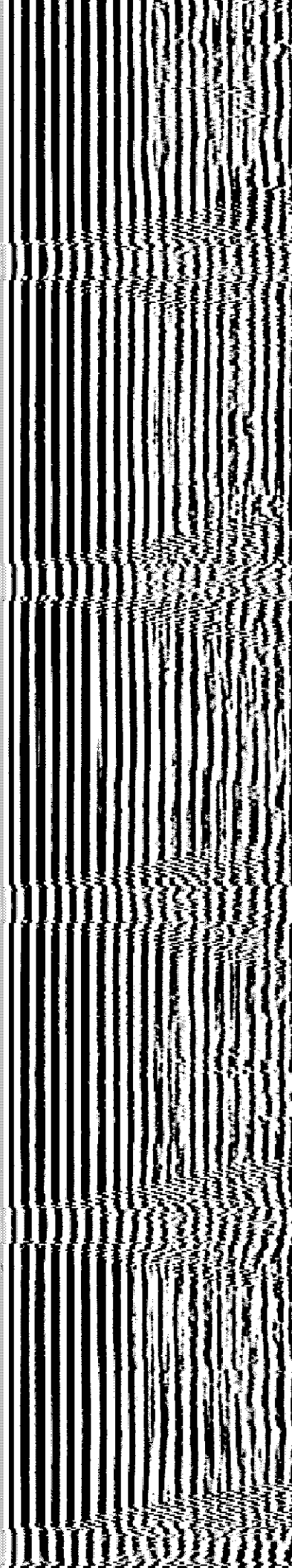
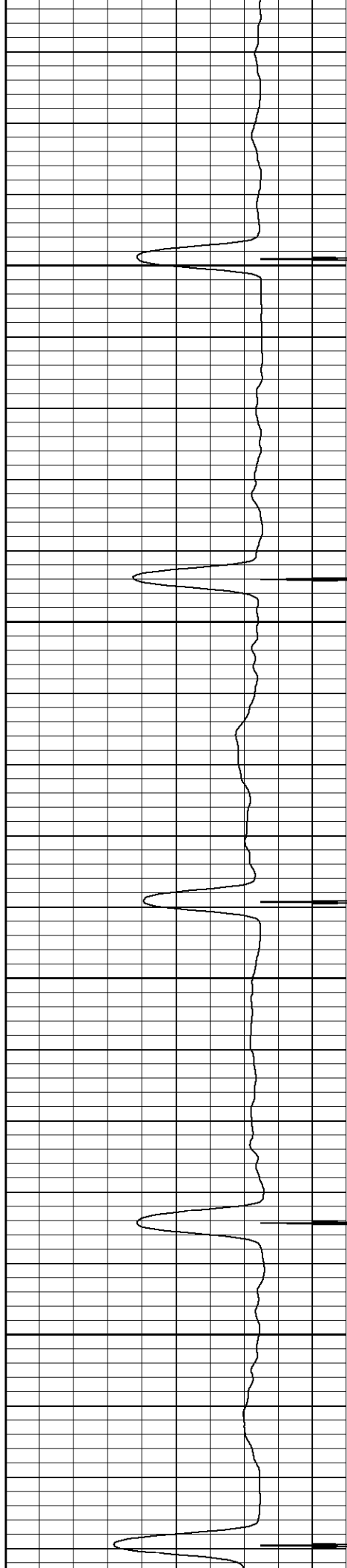


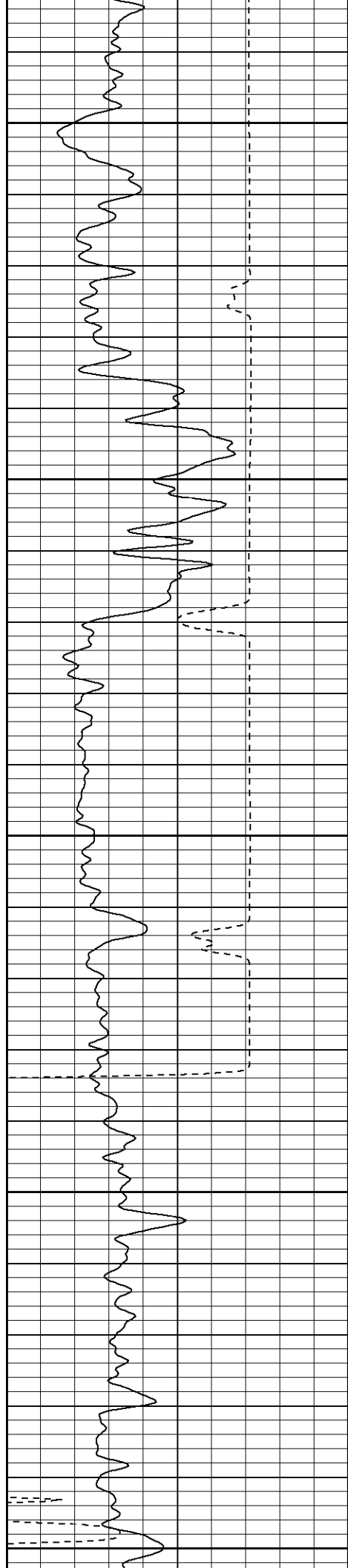
1550

1600

1650

1700





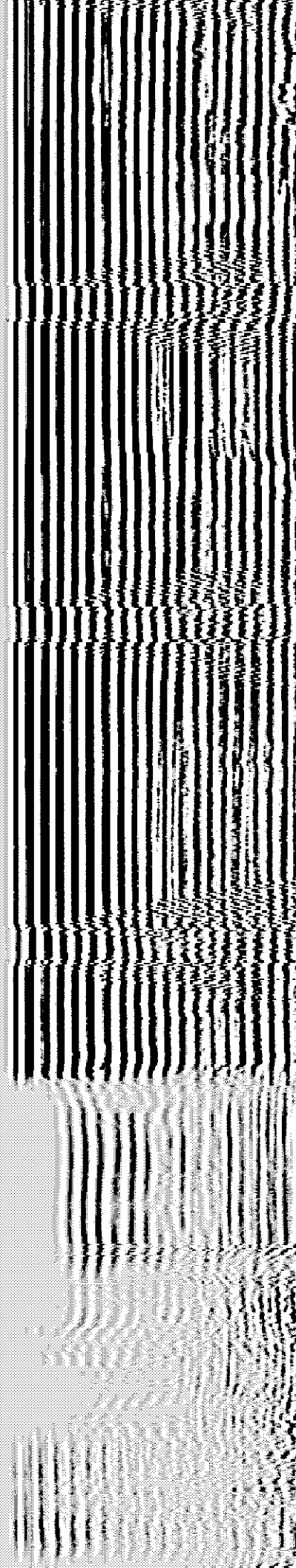
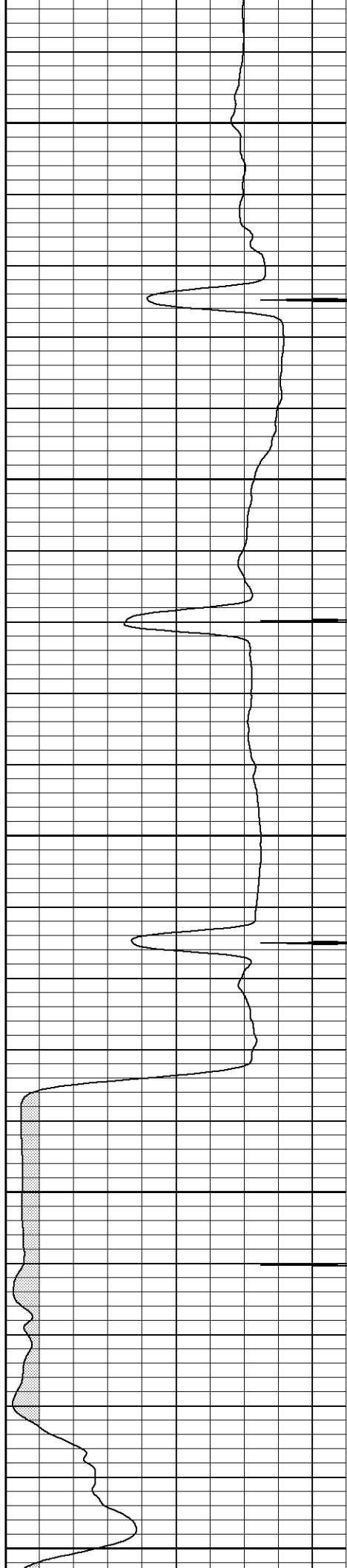
1750

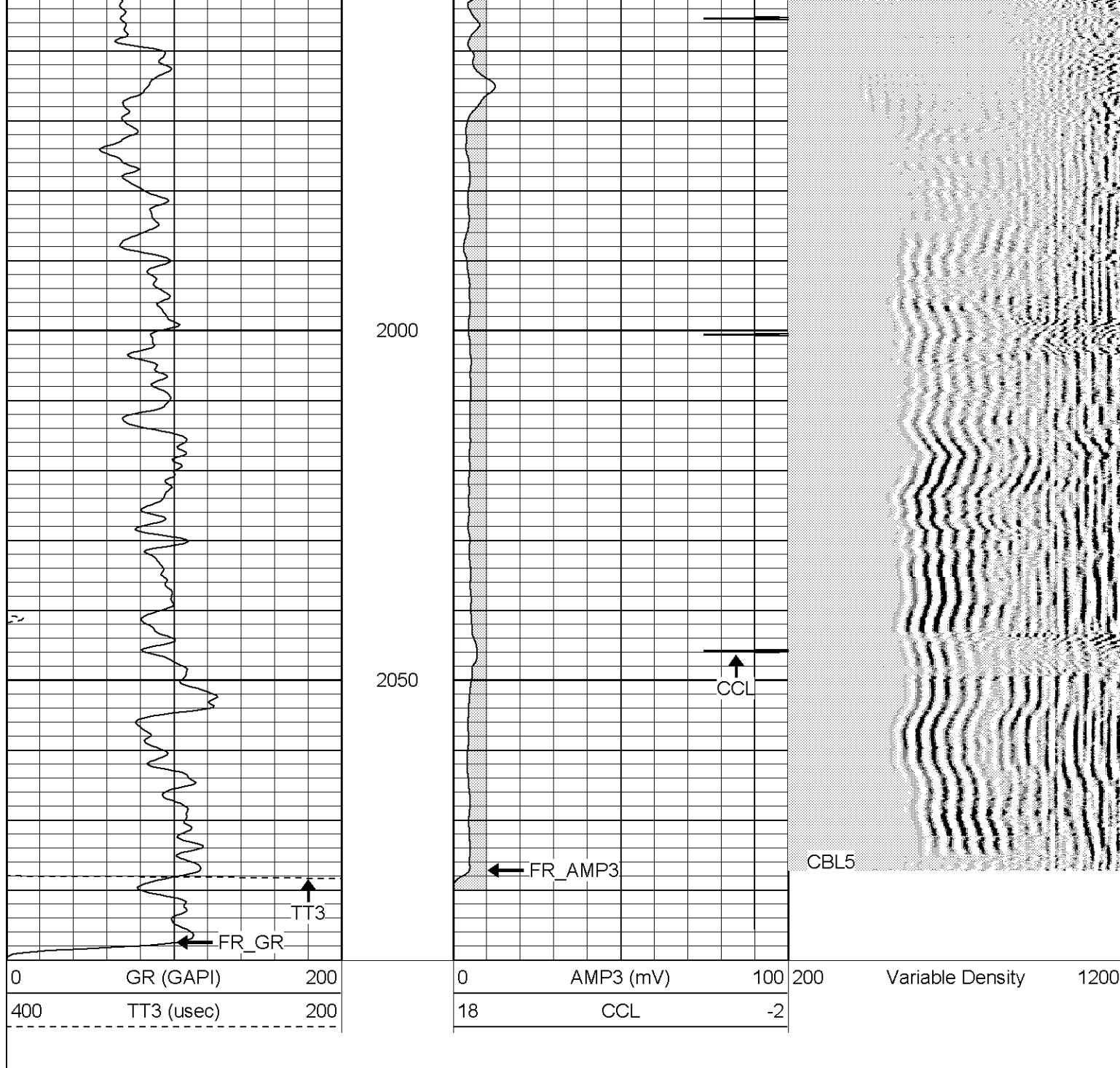
1800

1850

1900

1950



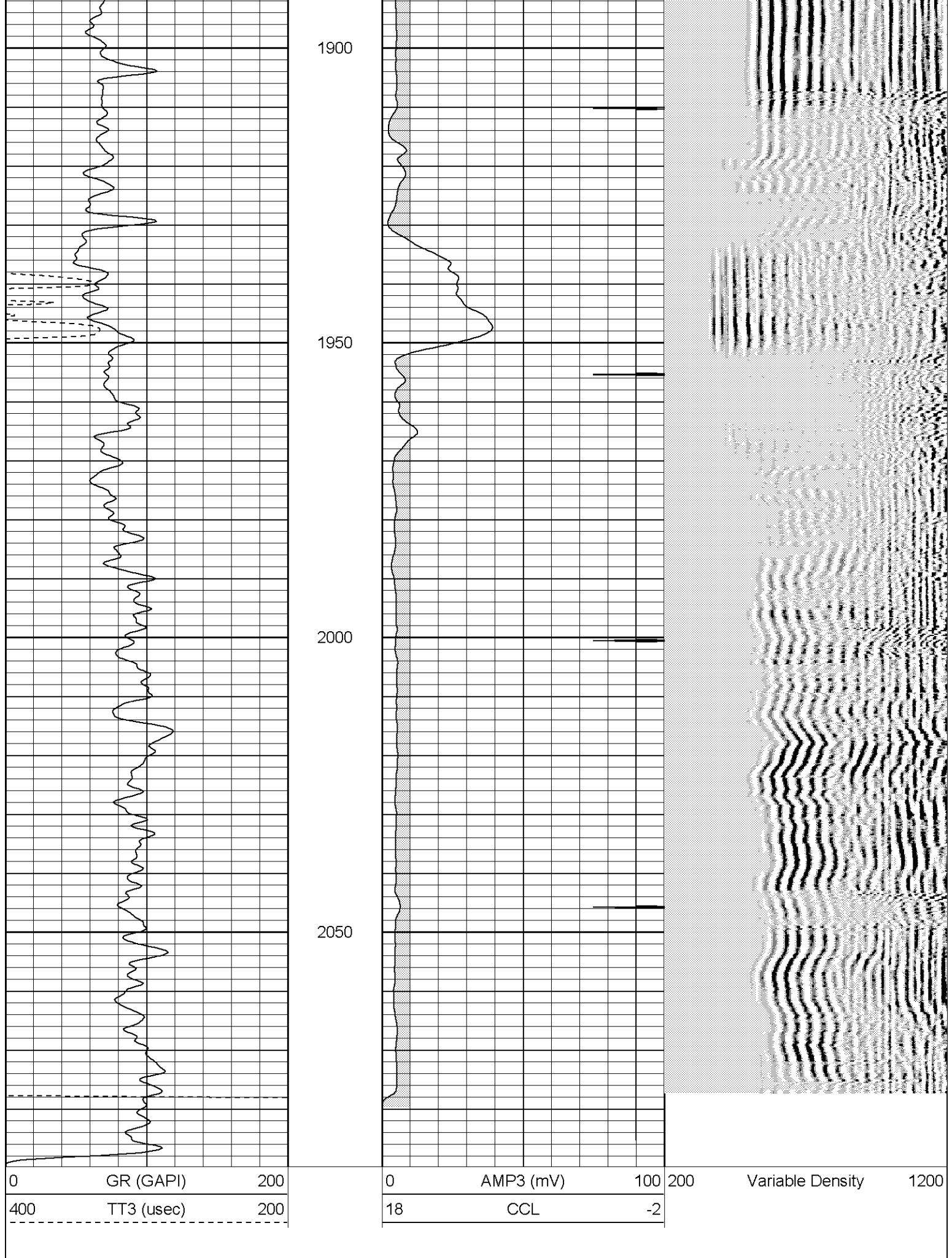


Patterson

Repeat Section

Database File: xtoge3108032906b.db
 Dataset Pathname: pass2.1
 Presentation Format: cblrt
 Dataset Creation: Wed Mar 29 15:04:35 2006 by Calc Warrior 7.0 STD Ope
 Charted by: Depth in Feet scaled 1:240

0	GR (GAPI)	200	0	AMP3 (mV)	100	200	Variable Density	1200
400	TT3 (usec)	200	18	CCL	-2			



Gamma Ray Calibration Report

Serial Number: 2.75
 Tool Model: Titan2.75
 Performed: Mon Jan 16 14:02:16 2006

 Calibrator Value: 1.0 GAPI

 Background Reading: 0.0 cps
 Calibrator Reading: 1.0 cps

 Sensitivity: 0.7500 GAPI/cps

Cement Bond Log Calibration Report

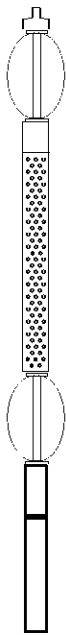
Serial Number: Titan4
 Tool Model: T4
 Performed: Fri Mar 24 14:26:56 2006

 Depth: 1421.41 ft
 Casing Diameter: 5.5 in

 3' Spacing 5' Spacing

 Signal Zero: 1 mV
 Calibrated Amplitude: 85 mV
 Reading at Signal Zero: 0.01 V
 Reading in Free Pipe: 1.3 V

 Gain: 65.1163 49.1228
 Offset: 0.348837 1.49123

Sensor	Offset (ft)	Schematic	Description	Len (ft)	OD (in)	Wt (lb)
CHD	20.38		None	0.75	1.50	5.00
CENT	19.63		X	3.00	1.69	25.00
WVF5	12.82		CBL-T4 (Titan4) Titan4	8.15	2.25	110.00
WVF3	11.82					
CENT	8.48		X	3.00	1.69	25.00
CCL	4.27		CCL-Titan2.75 (2.75)	1.71	2.75	15.00
GR	1.42		GR-Titan2.75 (2.75)	3.77	2.75	40.00

Dataset: /field/well/run1/_plots/_jobs/_cbl
 Total Length: 20.38 ft
 Total Weight: 220.00 lb
 O.D. 2.75 in