



SUPERIOR
Black Lick, Pa.
Mercer, Pa.
Wooster, Oh.
Cleveland, Ok.
Trinidad, Co.

DUAL INDUCTION LOG

Company XTO Energy Inc.
Well Apache Canyon 31-12
Field Purgatory River
County Las Animas State Colorado

Location: API # : 071 09120 00

2482' FSL & 331' FWL

SEC 31 TWP 33S RGE 67W

Permanent Datum Ground Level Elevation 7743'
Log Measured From Ground Level
Drilling Measured From Ground Level

Other Services
CDL
NEUTRON
Elevation
K.B. -----
D.F. -----
G.L. 7743'

Date 3-7-07

Run Number One

Depth Driller 2200'

Depth Logger 2200'

Bottom Logged Interval 2198'

Top Log Interval Surface Casing

Casing Driller 8 5/8" @ 500'

Casing Logger 500'

Bit Size 7 7/8"

Type Fluid in Hole Water

Density / Viscosity ///

pH / Fluid Loss ///

Source of Sample ///

Rm @ Meas. Temp ///

Rmf @ Meas. Temp ///

Rmc @ Meas. Temp ///

Source of Rmf / Rmc ///

Rm @ BHT ///

Time Circulation Stopped 3:30 P.M.

Time Logger on Bottom 6:15 P.M.

Maximum Recorded Temperature 99 DEG F

Equipment Number T0697

Location Trinidad

Recorded By M. Norton

Witnessed By Mr. Don Johnson

>>> Fold Here >>>

All interpretations are opinions based on inferences from electrical or other measurements and we cannot and do not guarantee the accuracy or correctness of any interpretation, and we shall not, except in the case of gross or willful negligence on our part, be liable or responsible for any loss, costs, damages, or expenses incurred or sustained by anyone resulting from any interpretation made by any of our officers, agents or employees. These interpretations are also subject to our general terms and conditions set out in our current Price Schedule.

Comments

Well Directions:

Second Bosque entrance four miles past Weston turn left,
at Y stay left on Ciruele Canyon, drive to wind mill stay right,
stay on main road second drive thru location.



SUPERIOR

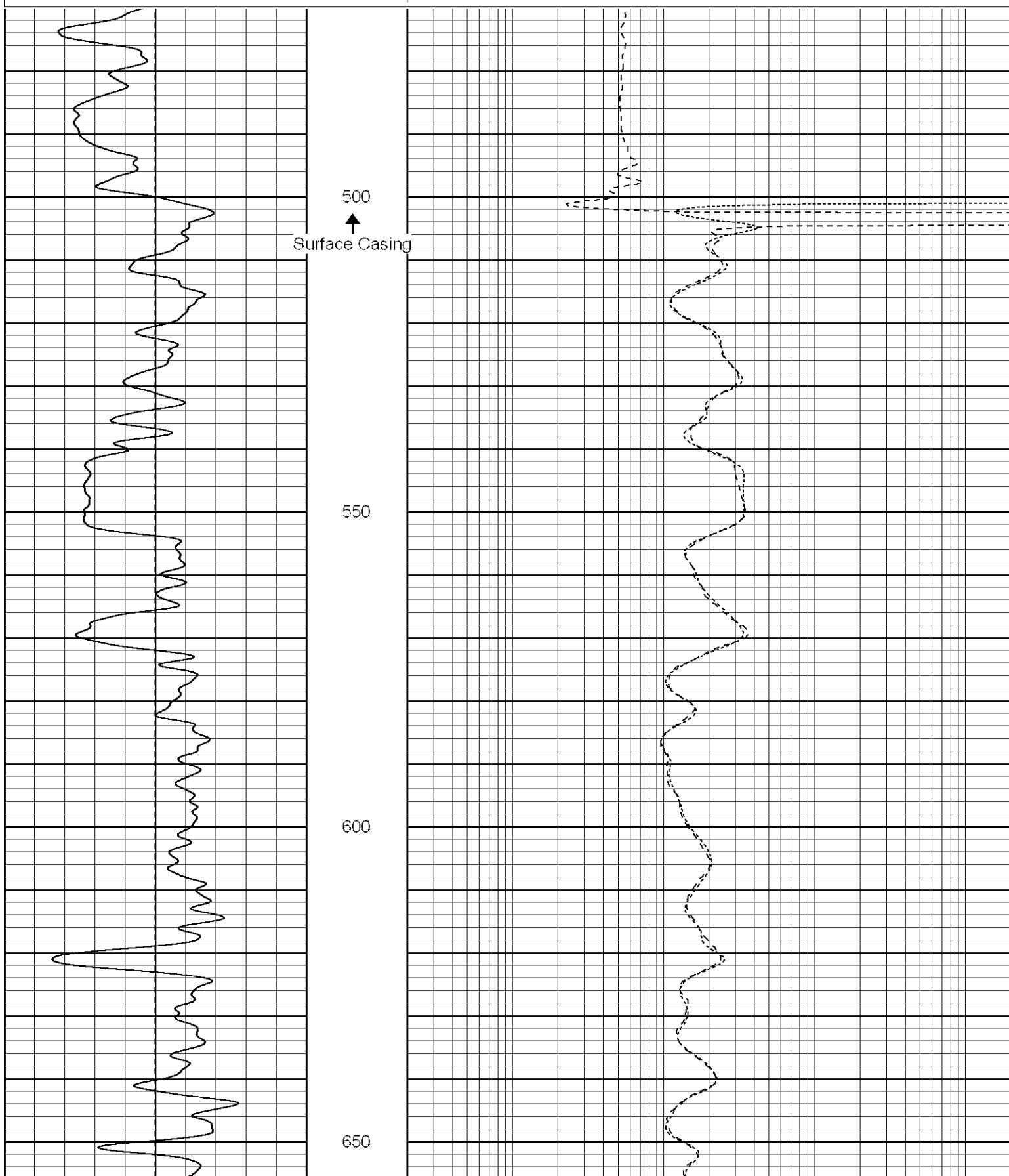
Black Lick, Pa.
Mercer, Pa.
Wooster, Oh.
Cleveland, Ok.
Trinidad, Co.

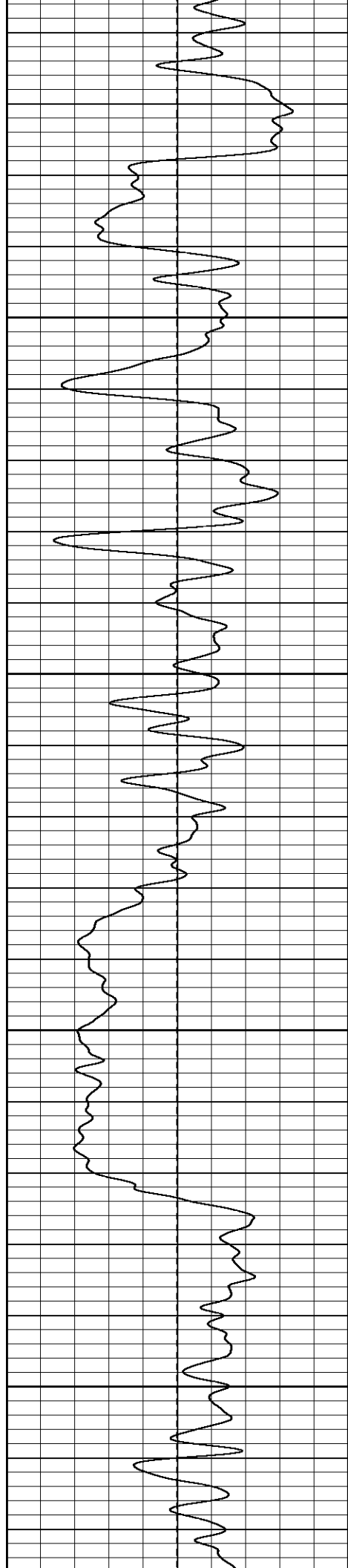
Main Pass

Database File: xtoac3112.db
Dataset Pathname: pass2.1
Presentation Format: dil
Dataset Creation: Wed Mar 07 20:06:19 2007 by Calc Open-Cased 061129
Charted by: Depth in Feet scaled 1:240

0	GR (GAPI)	200
-100	SP (mV)	100

0.2	RILM (Ohm-m)	2000
0.2	RILD (Ohm-m)	2000
0.2	RLL3 (Ohm-m)	2000



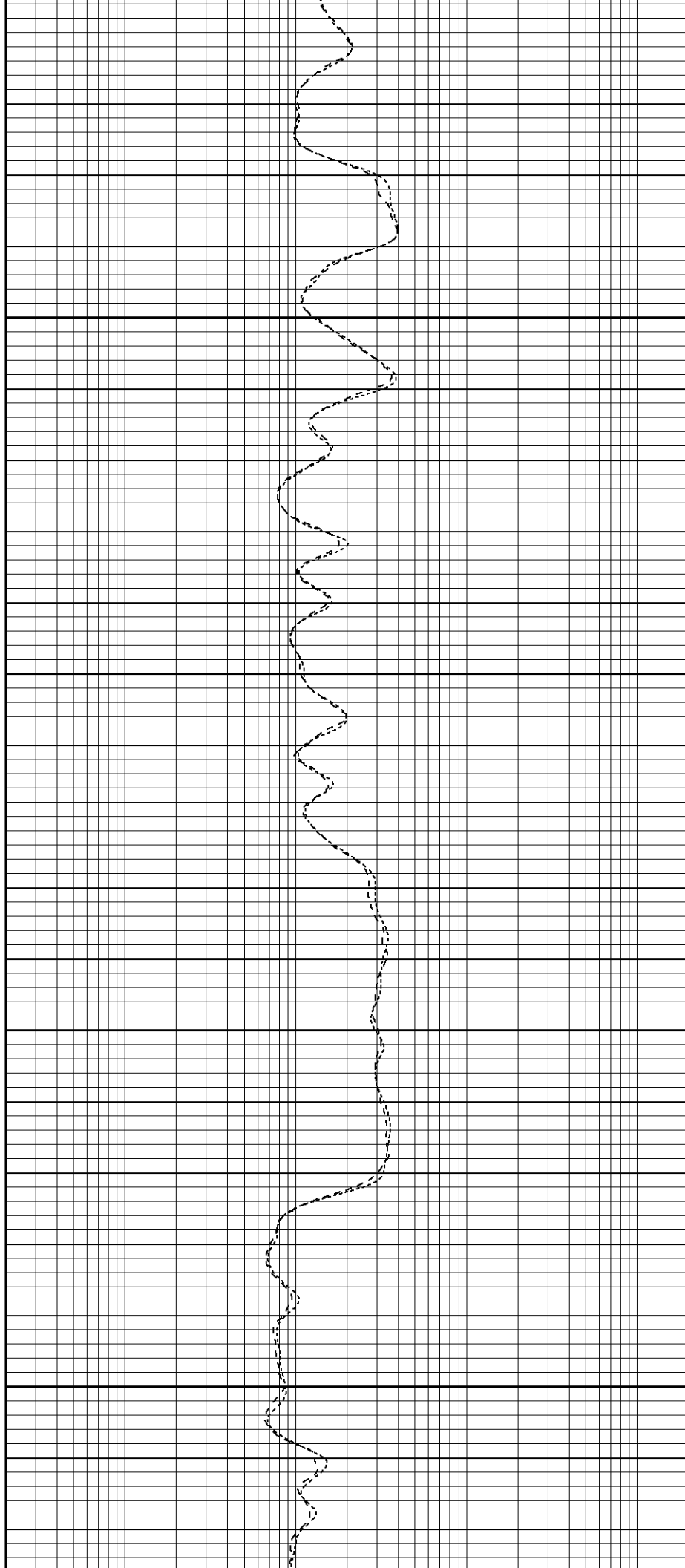


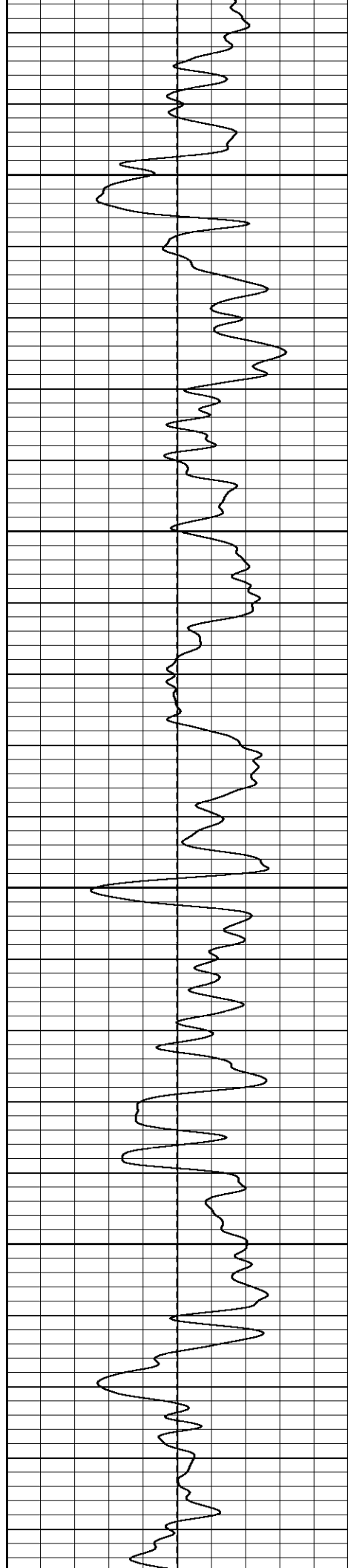
700

750

800

850



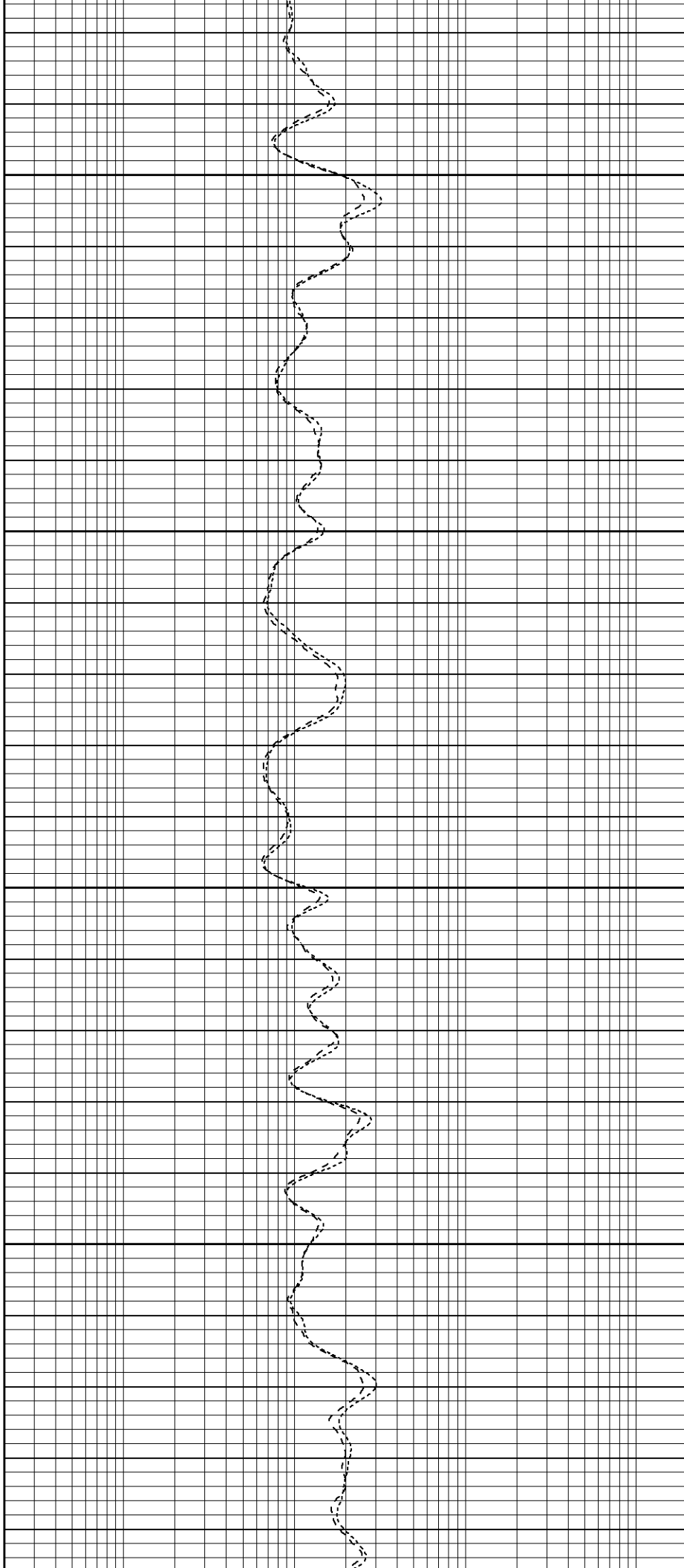


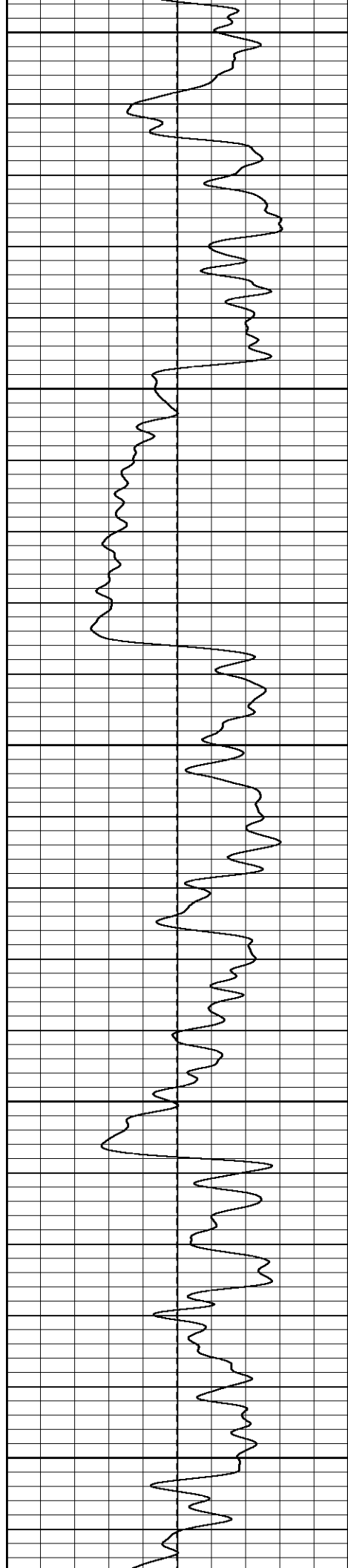
900

950

1000

1050





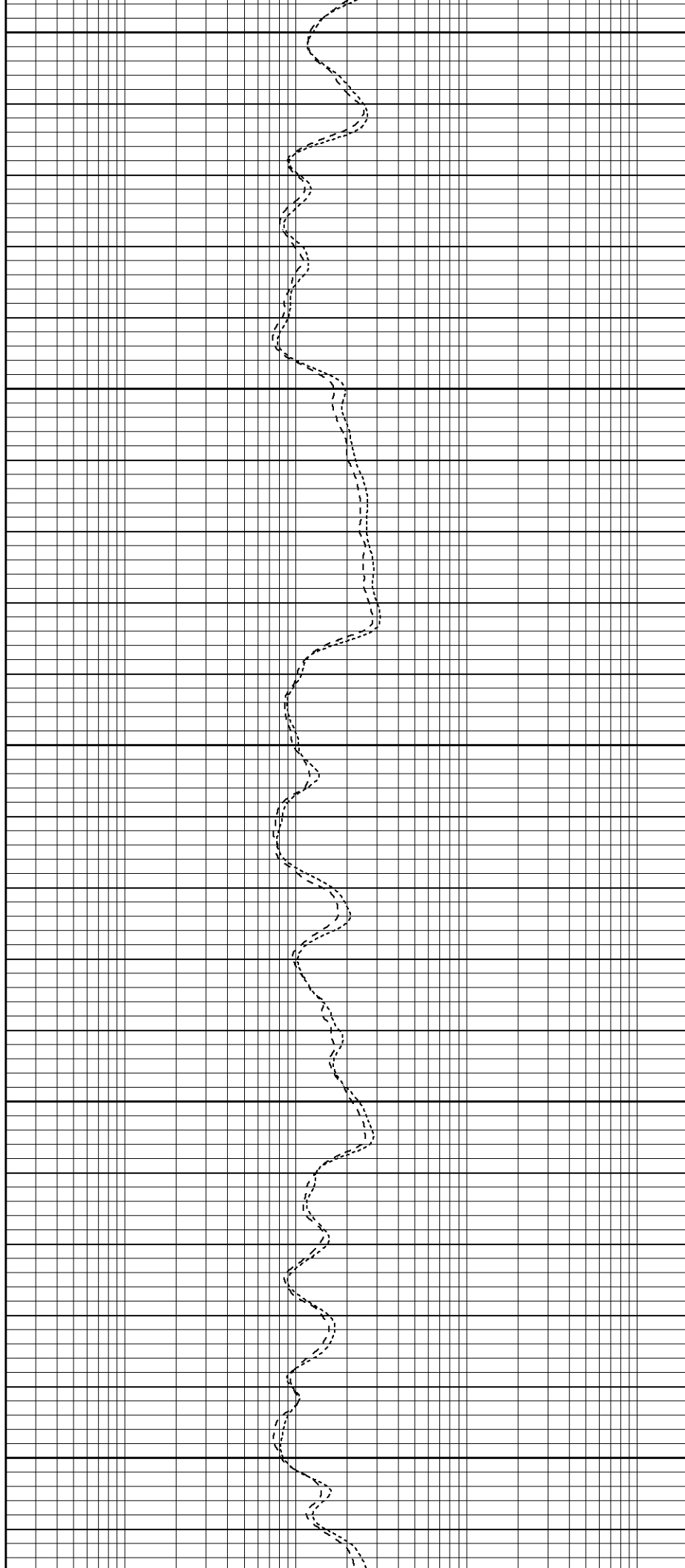
1100

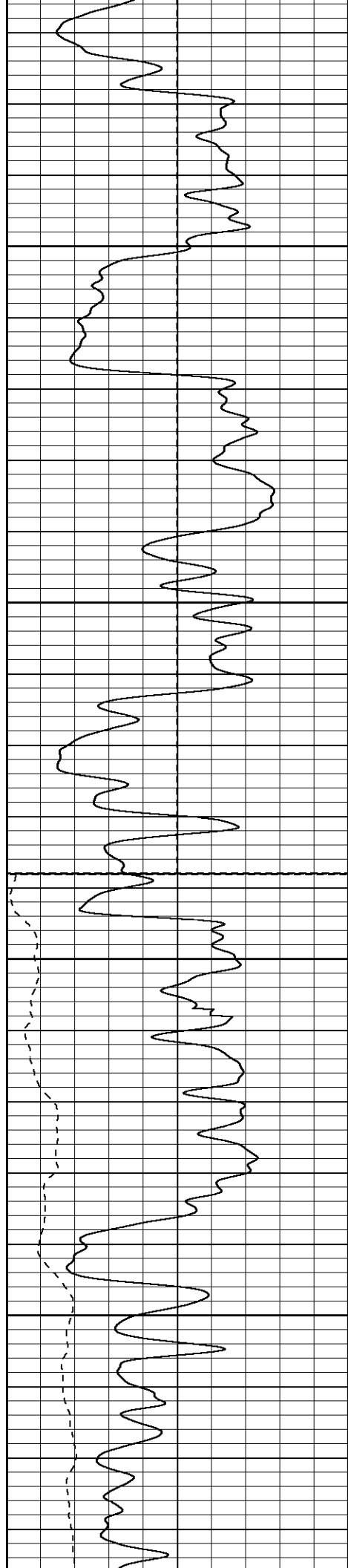
1150

1200

1250

1300





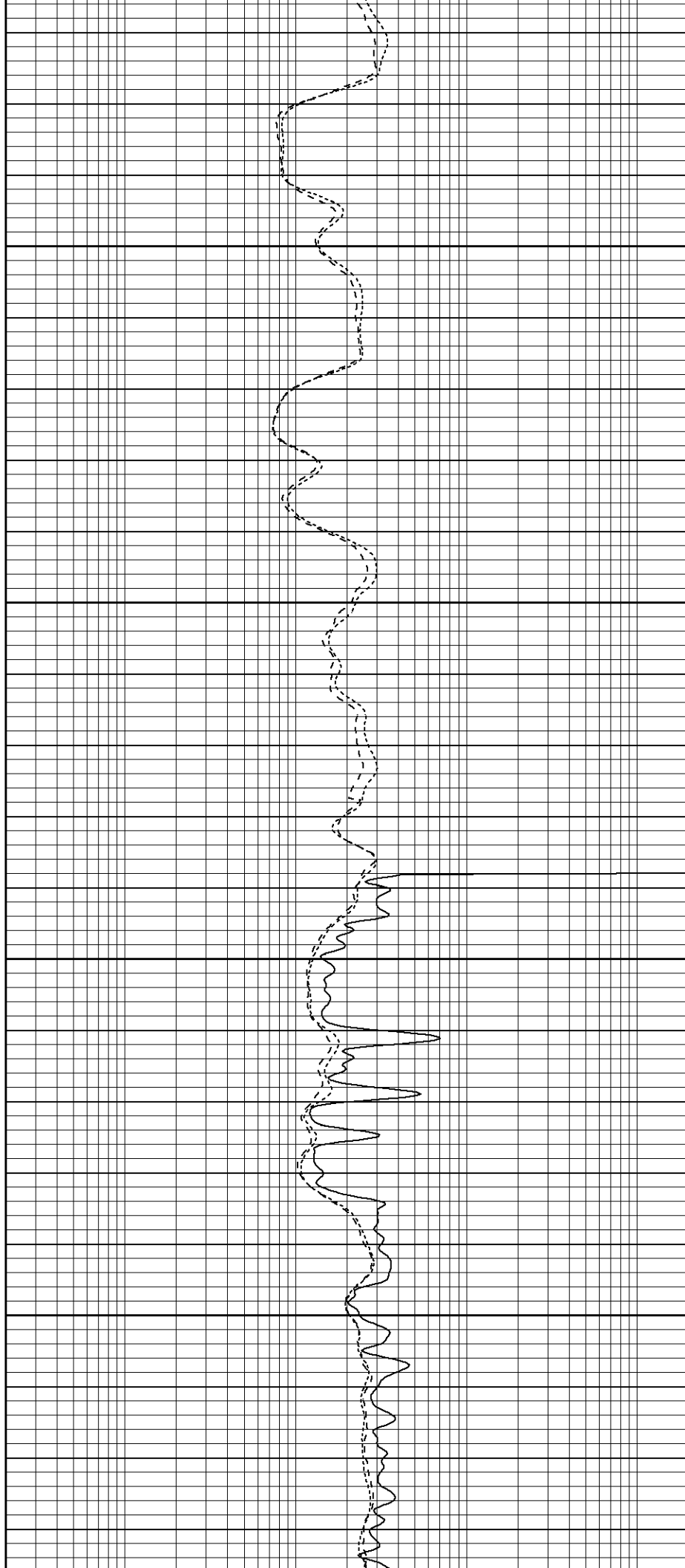
1350

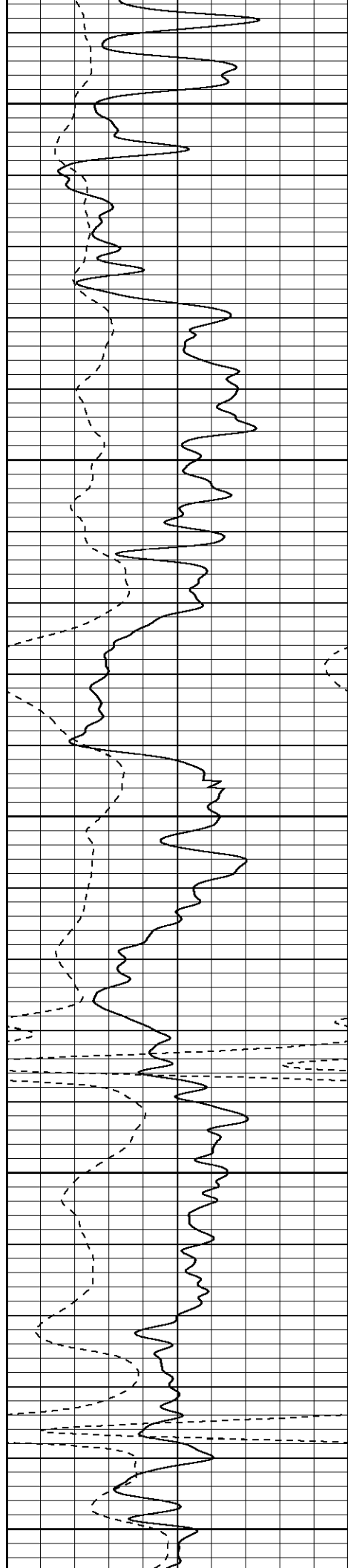
1400

Fluid Level

1450

1500





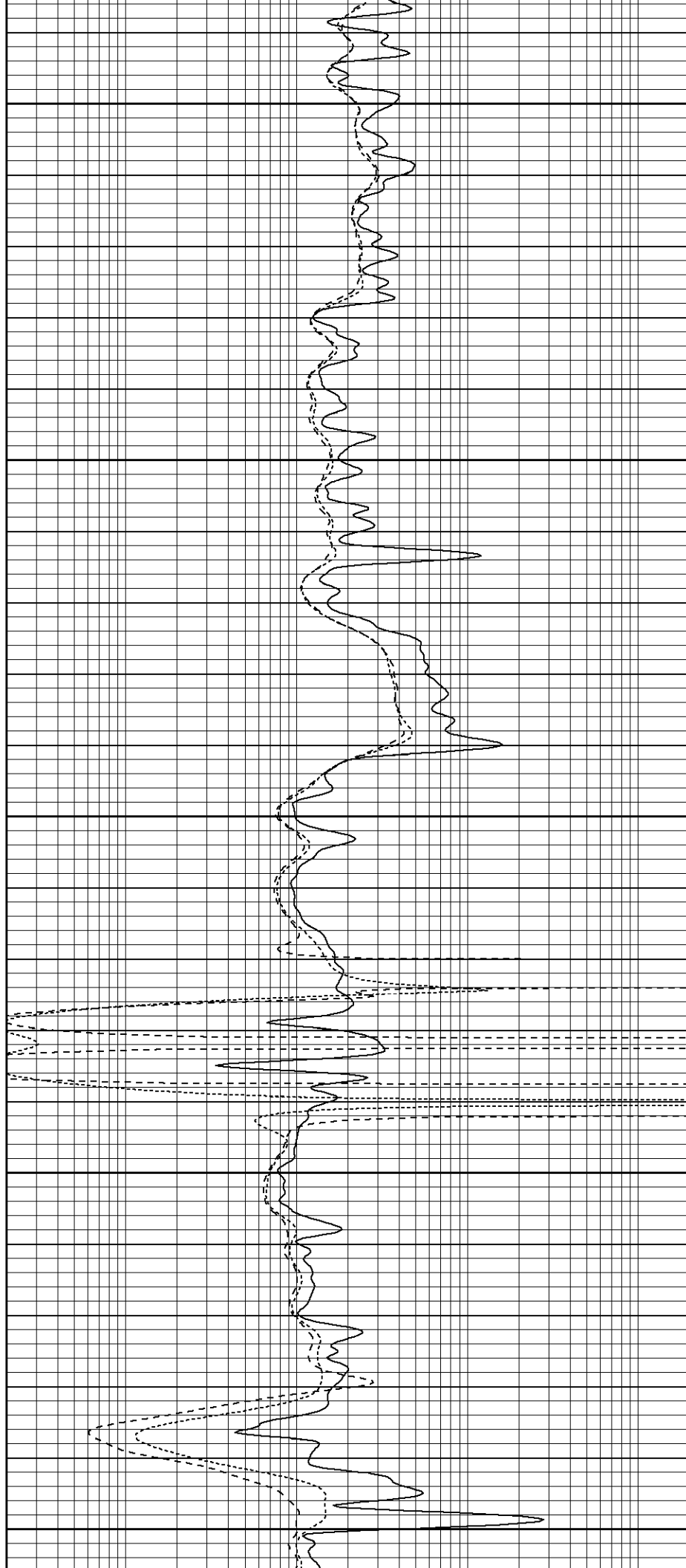
1550

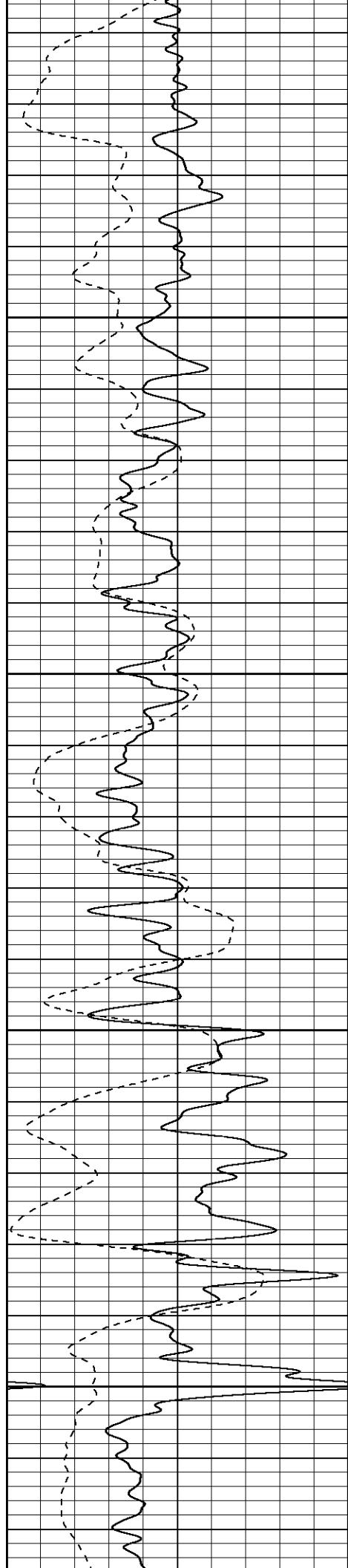
1600

1650

1700

1750



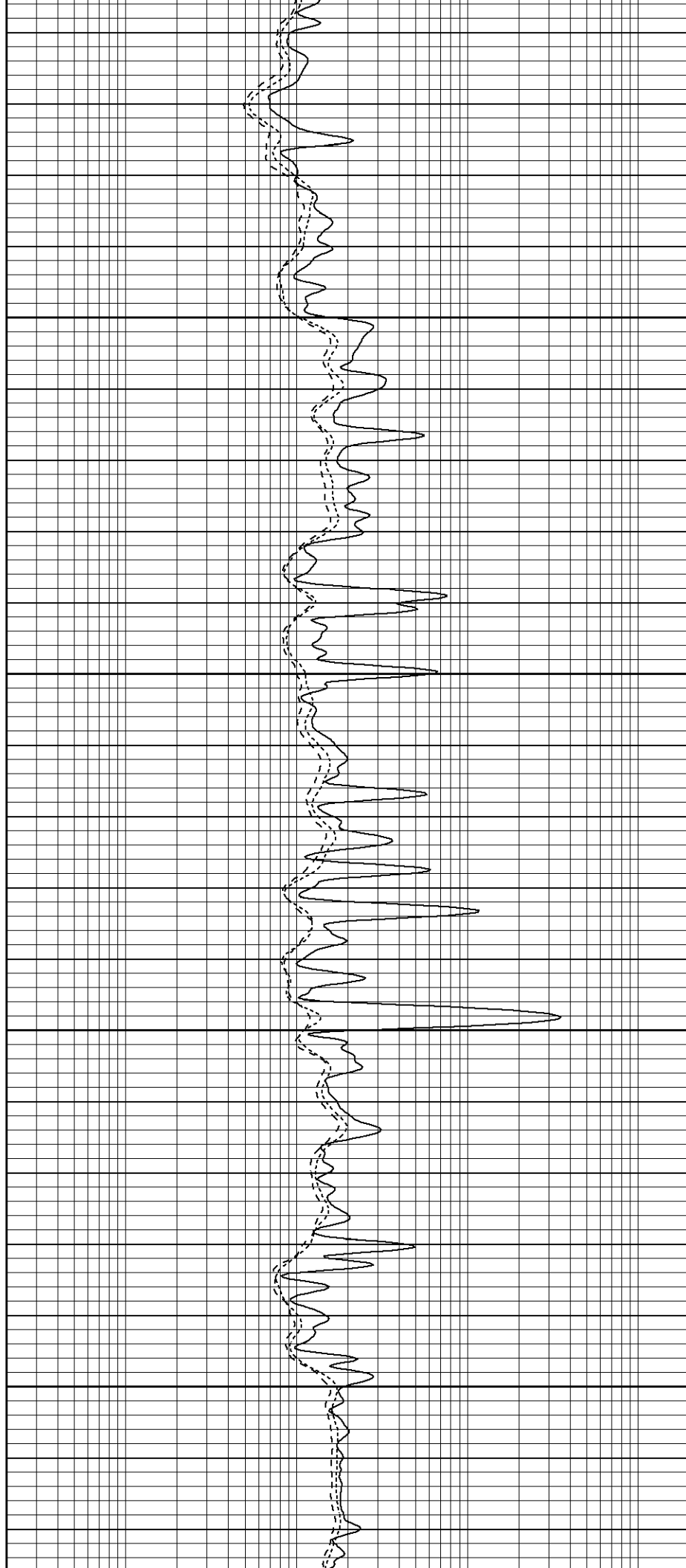


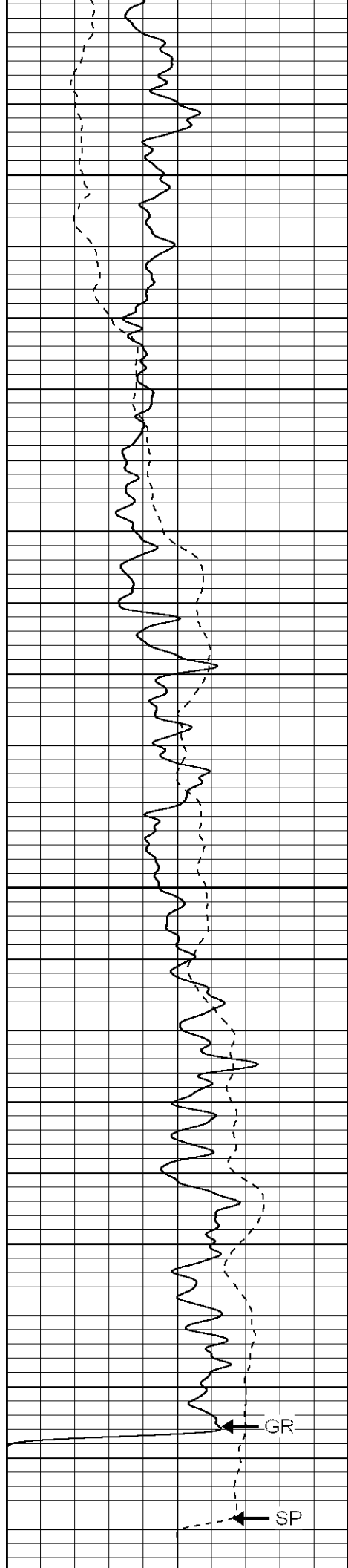
1800

1850

1900

1950





2000

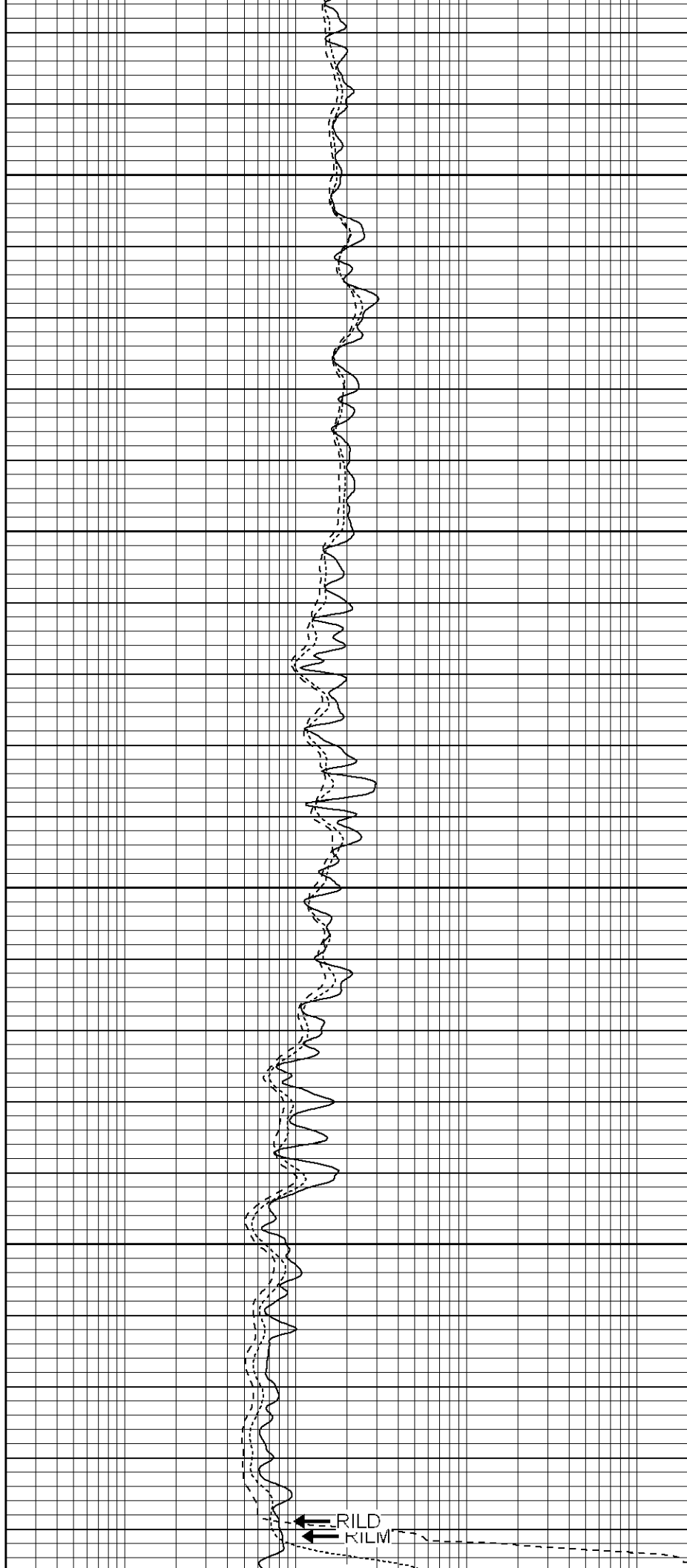
2050

2100

2150

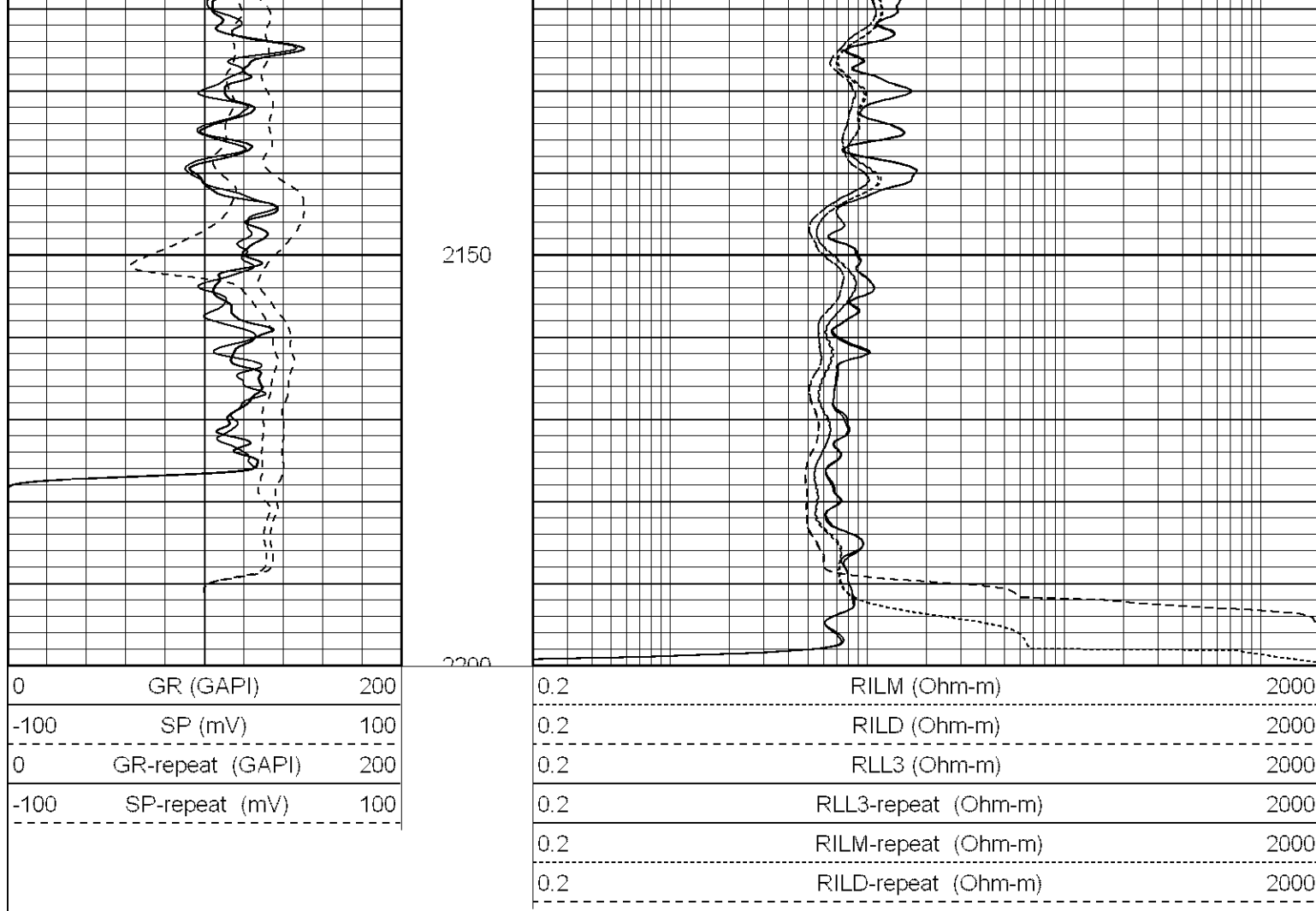
GR

SP



RILD

KILM



Calibration Report

Database File: xtoac3112.db
 Dataset Pathname: pass2
 Dataset Creation: Wed Mar 07 18:17:39 2007 by Log Open-Cased 061129

Dual Induction Calibration Report

Serial-Model: 5375-G
 Surface Cal Performed: Fri Jan 19 08:02:09 2007
 Downhole Cal Performed: Sun Jan 21 14:02:19 2007

Surface Calibration

Loop:	Readings			References			Results	
	Air	Loop		Air	Loop		m	b
Deep	0.001	0.620	V	0.000	500.000	mmho-m	807.659	-1.119
Medium	0.005	0.743	V	0.000	550.000	mmho-m	744.727	-3.505
Internal:	Zero	Cal		Zero	Cal		m	b
Deep	0.001	0.620	V	0.000	500.000	mmho-m	807.698	-1.159
Medium	0.005	0.743	V	0.000	550.000	mmho-m	744.801	-3.569

Downhole Calibration

Internal:	Readings			References			Results	
	Zero	Cal		Zero	Cal		m	b
Deep	0.123	499.901	mmho-m	0.039	500.015	mmho-m	1.000	-0.084

Gamma Ray Calibration Report		
Serial Number:	2001	
Tool Model:	OH	
Performed:	Sat Feb 03 02:20:45 2007	
Calibrator Value:	1.0	GAPI
Background Reading:	0.0	cps
Calibrator Reading:	1.0	cps
Sensitivity:	0.1700	GAPI/cps