

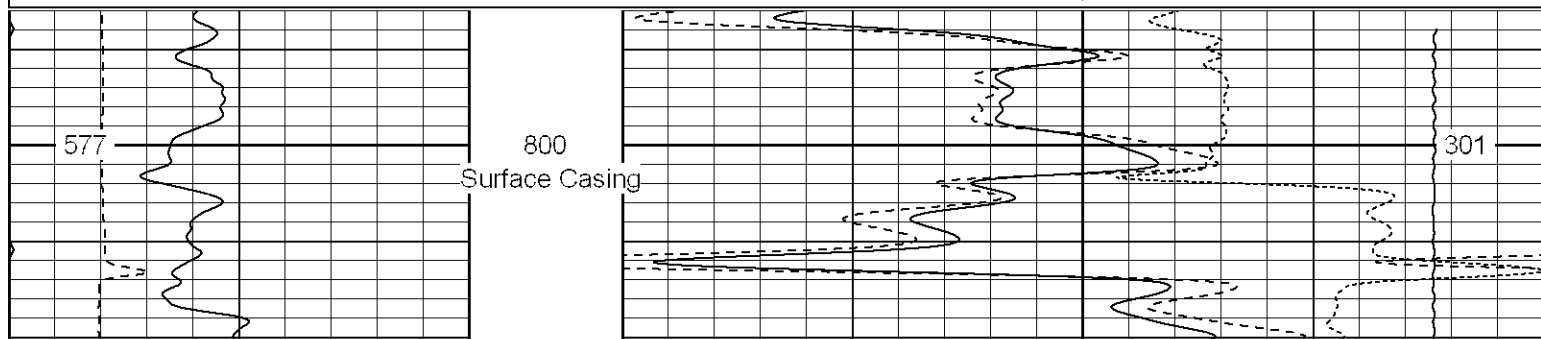


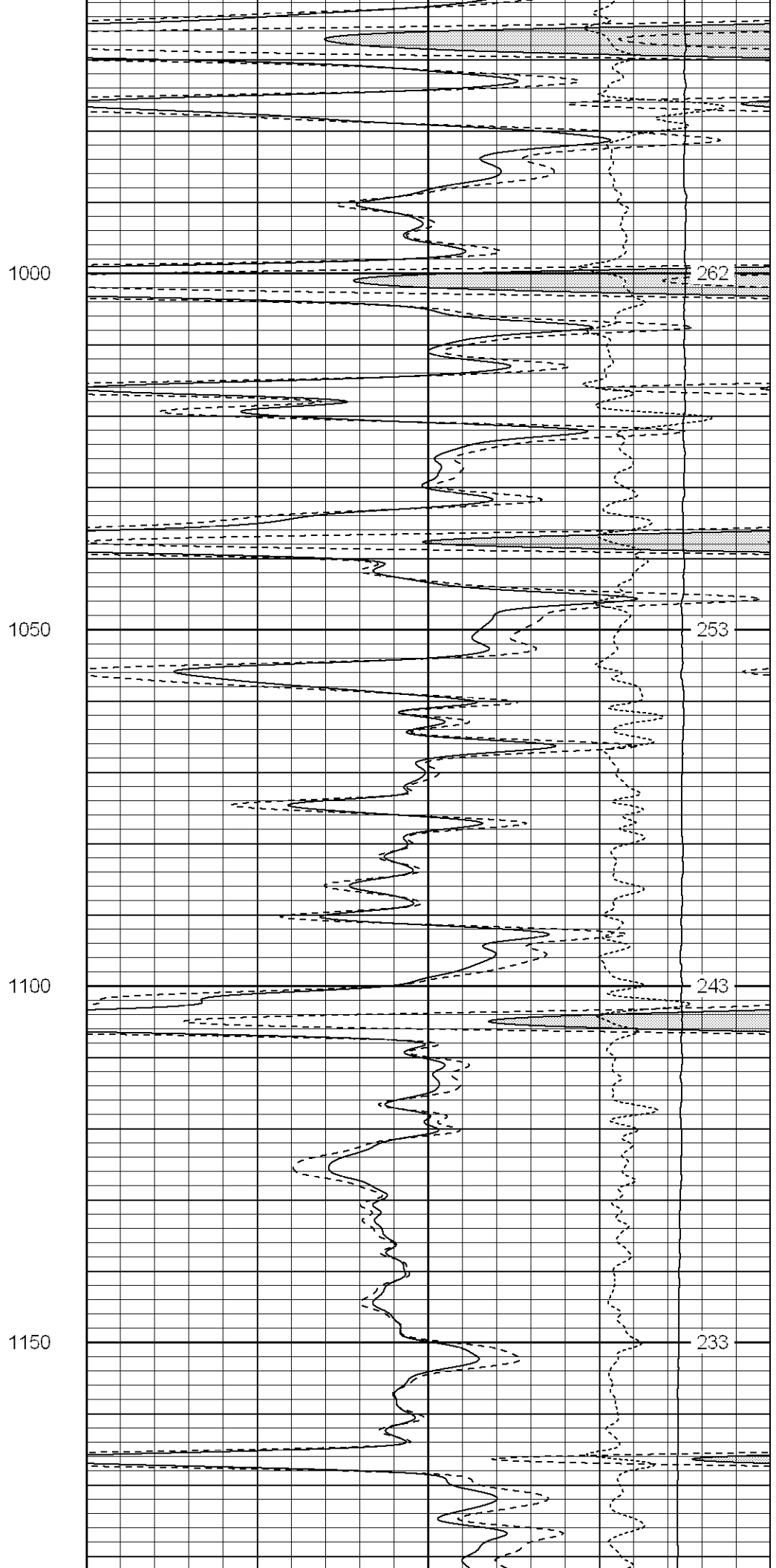
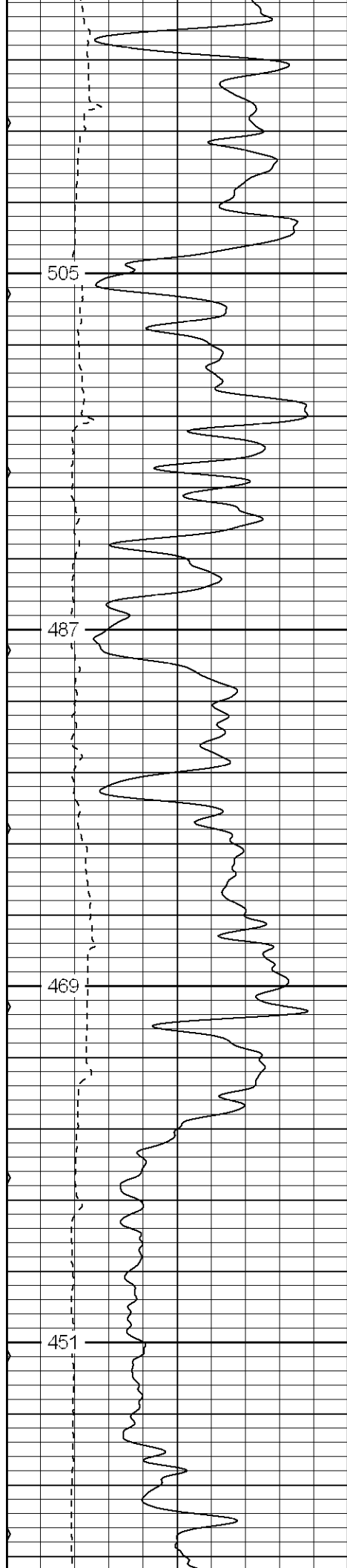
Company XTO Energy Inc.
Well Apache Canyon 12-04
Field

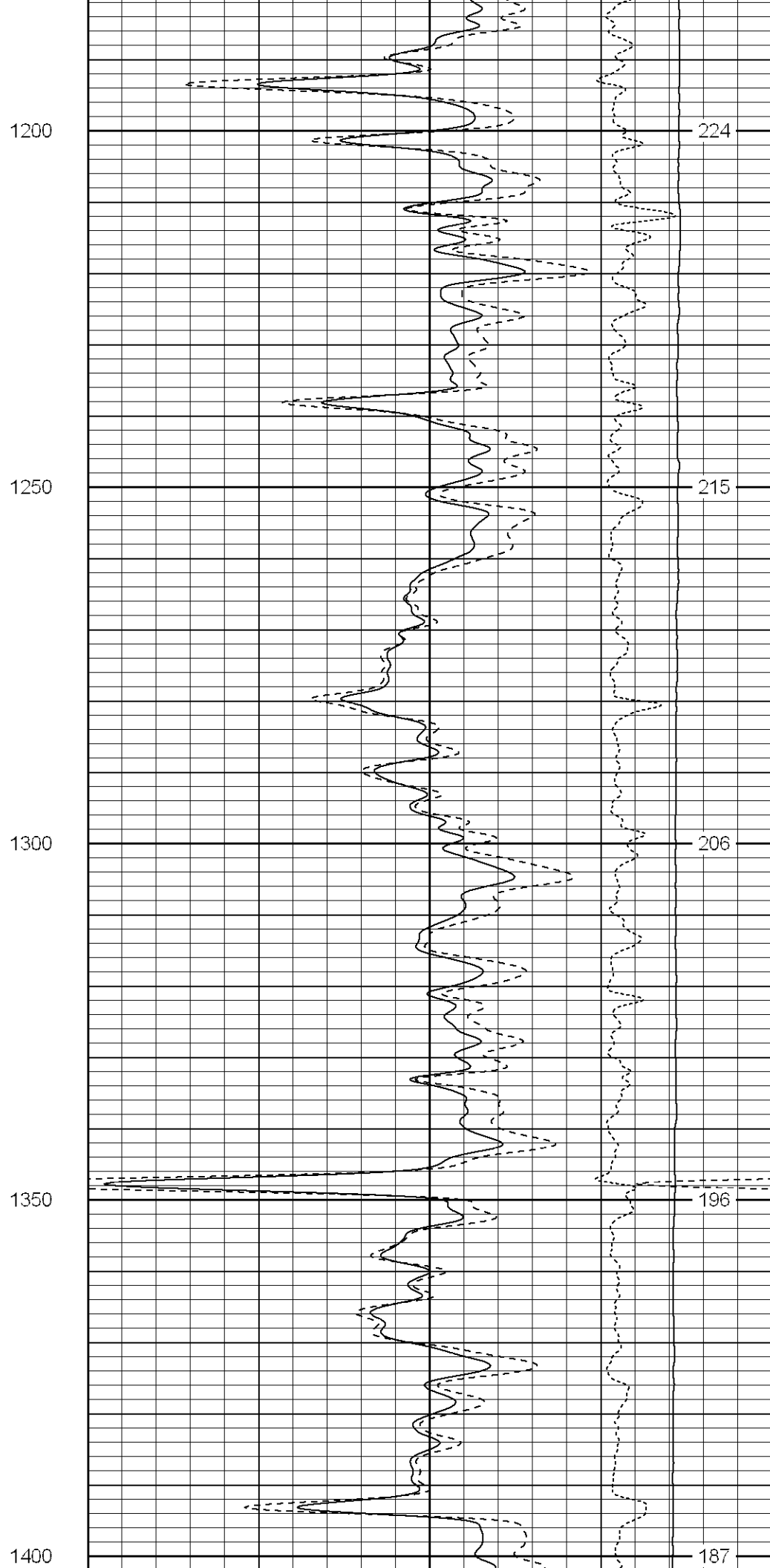
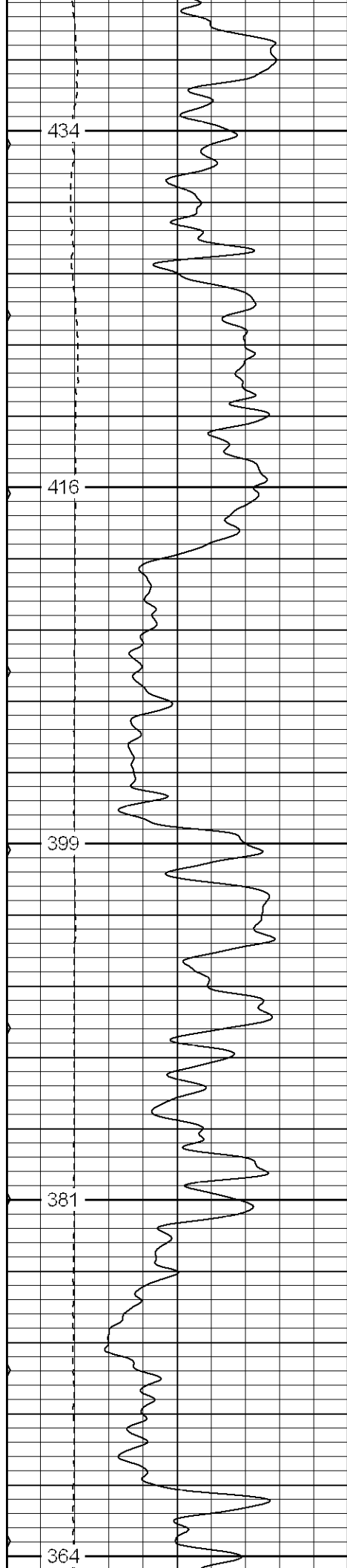
Date
Run Numb
Depth Drill
Depth Log
Bottom Log
Top Log In
Casing Drill
Casing Log
Bit Size
Type Fluid
Density / V
pH / Fluid I
Source of
Rm @ Me
Rmf @ Me
Rmc @ Me
Source of
Rm @ BHT
Time Circu
Time Logg
Maximum I
Equipment
Location
Recorded I
Witnessed

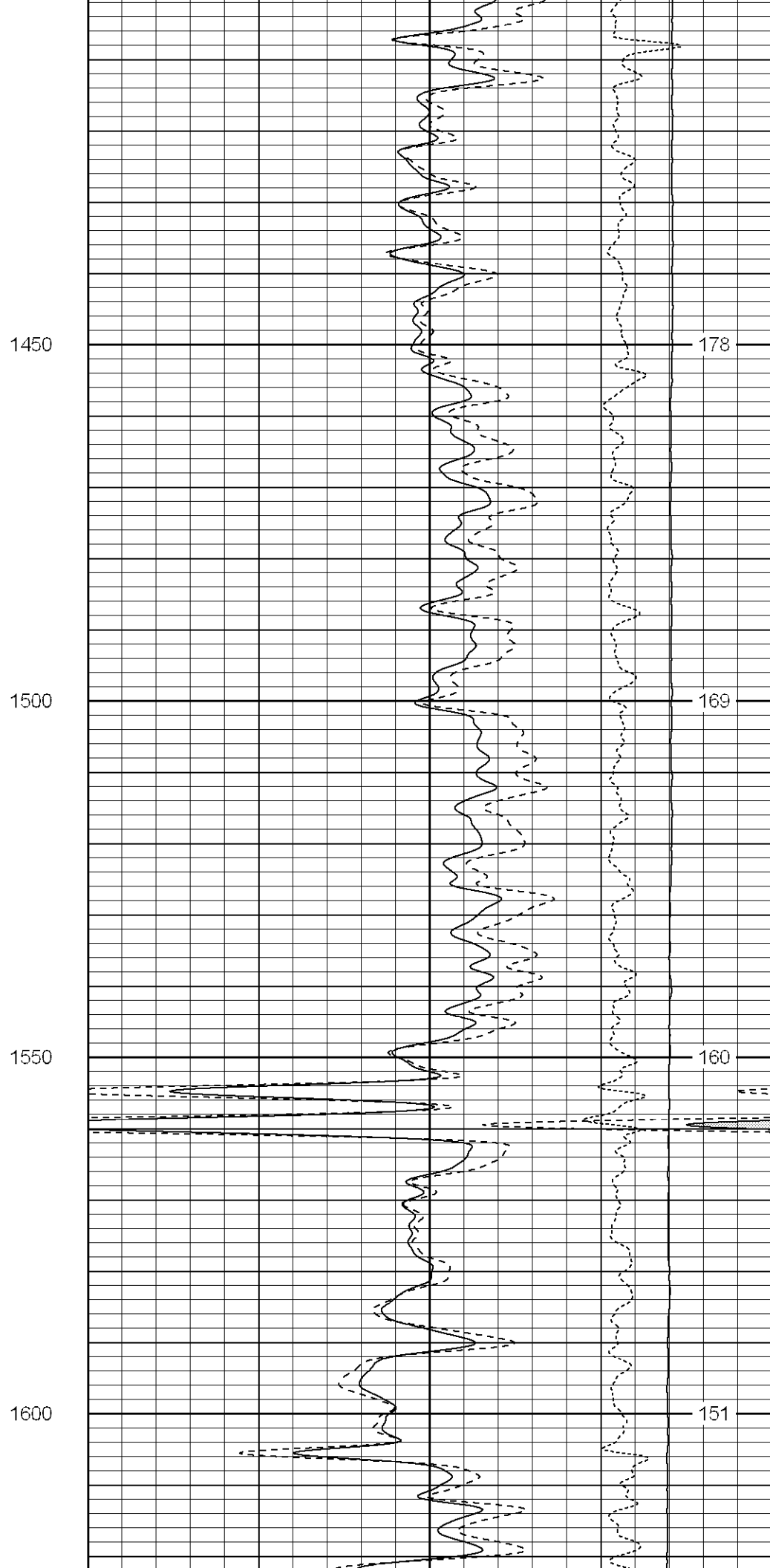
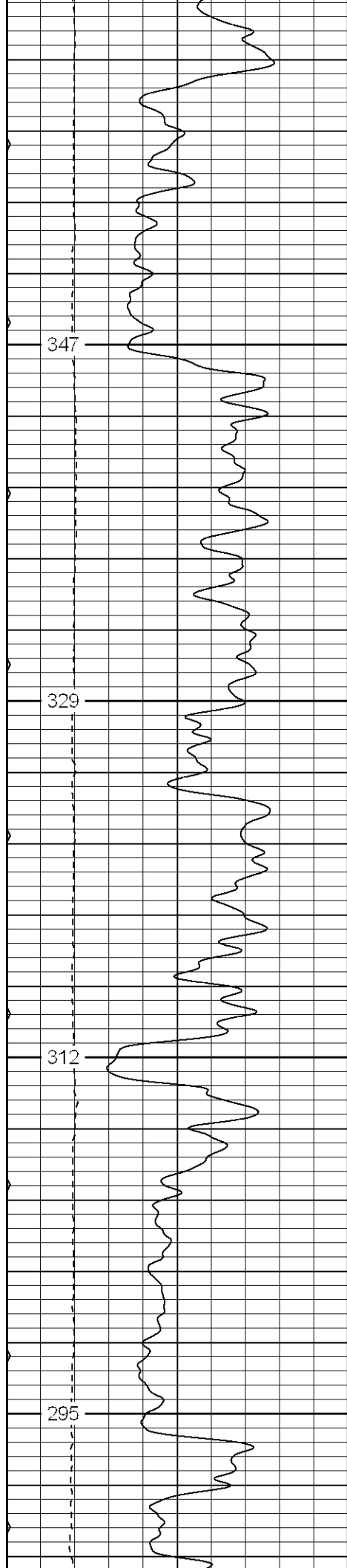
Database File: xtoac1204.db
 Dataset Pathname: pass2.1
 Presentation Format: cdl
 Dataset Creation: Sun Aug 06 09:22:40 2006 by Calc Warrior 7.0 STD Ope
 Charted by: Depth in Feet scaled 1:240

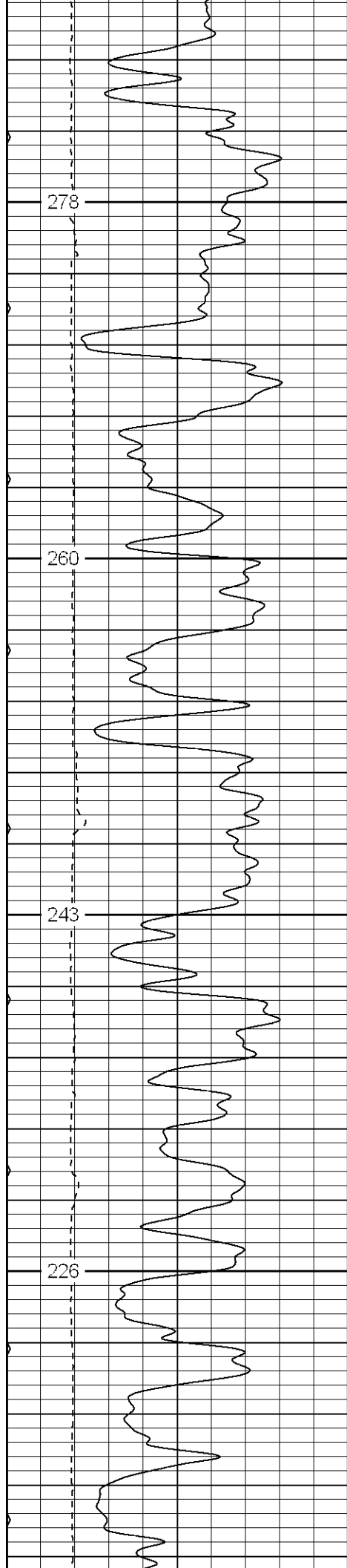
0	GR (GAPI)	200	2	RHOB (g/cc)	3	
6	DCAL (in)	16	1	RHOB (g/cc)	2	
0	MINMK	80	30	DPOR (pu)	-10	
				-0.5	RHOC (g/cc)	0.5
				4000	LTEN (lb)	0









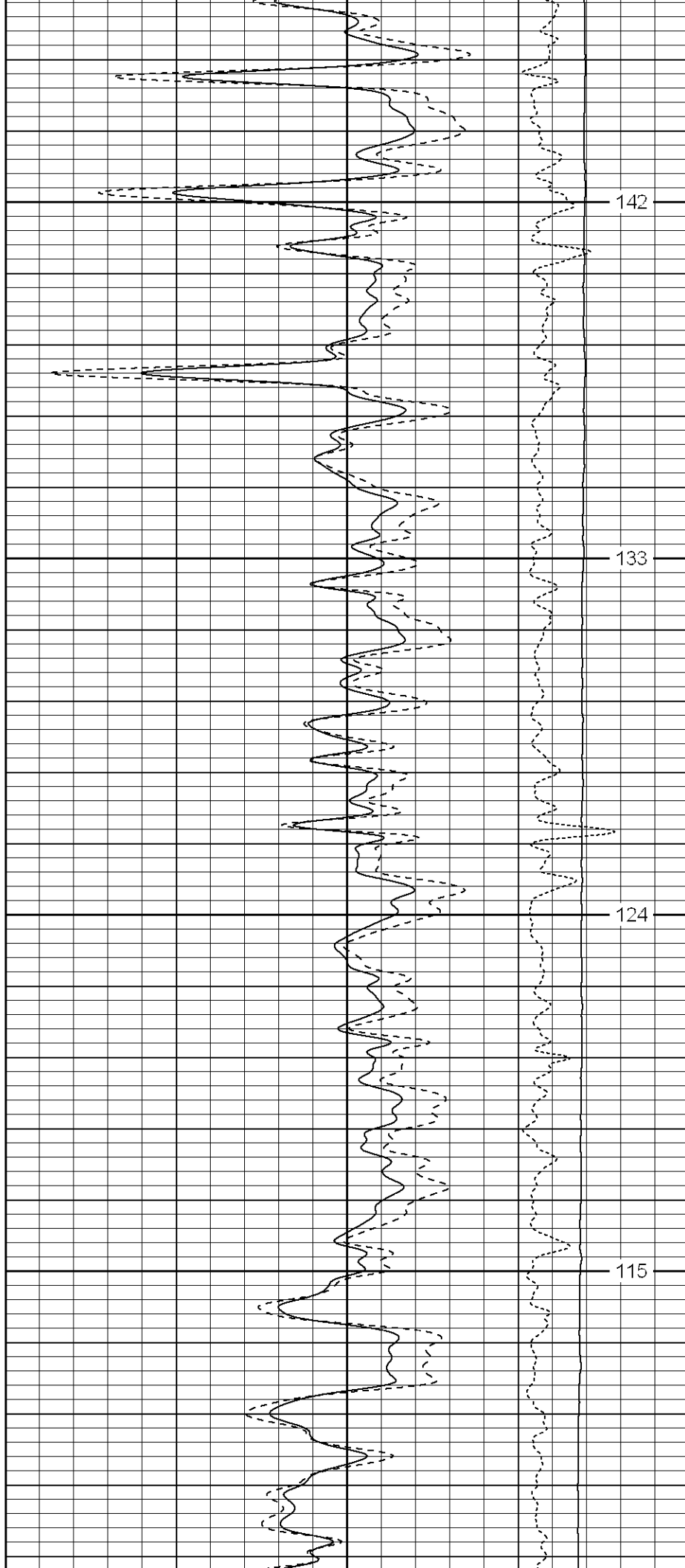


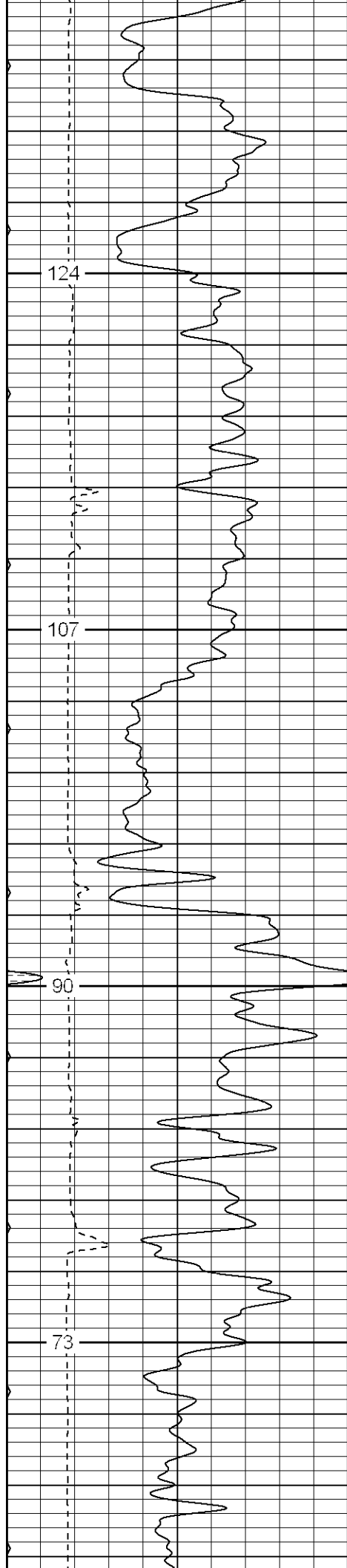
1650

1700

1750

1800



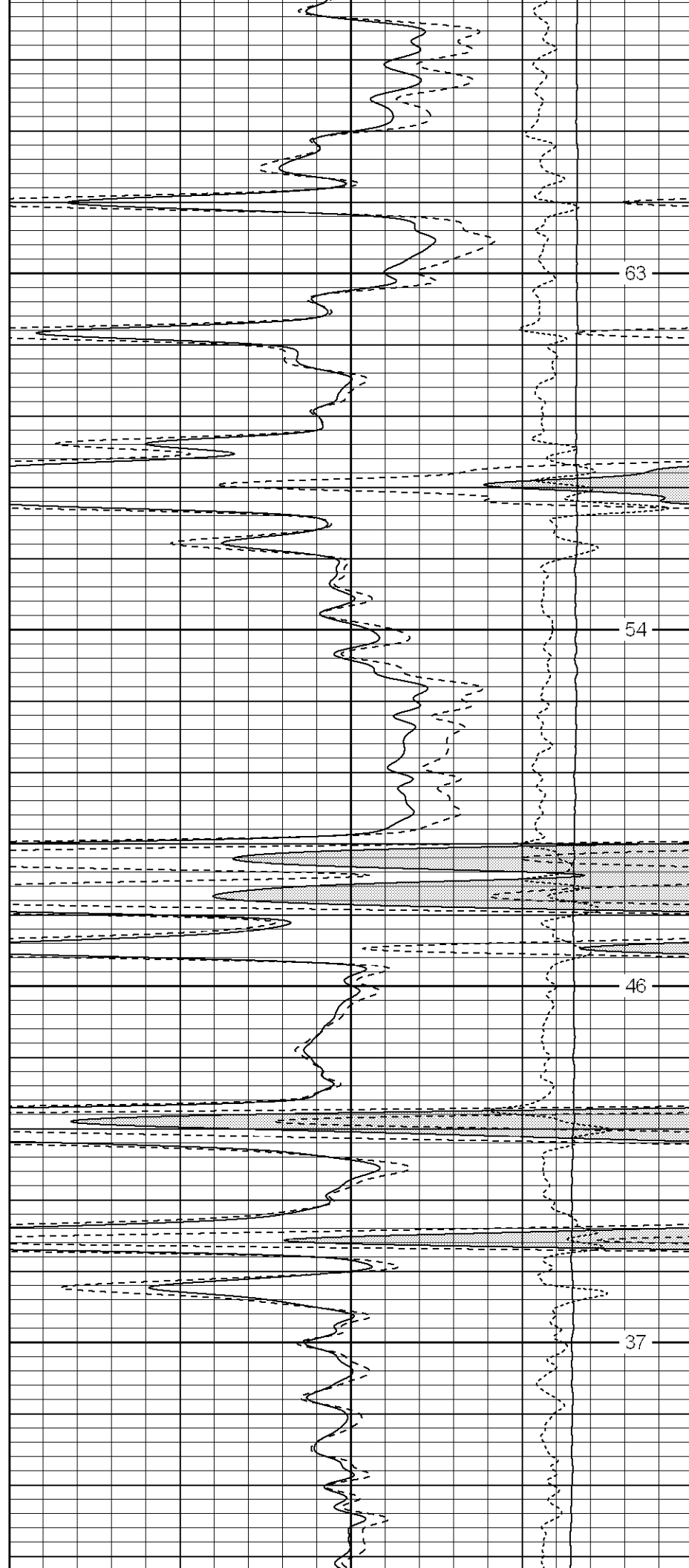


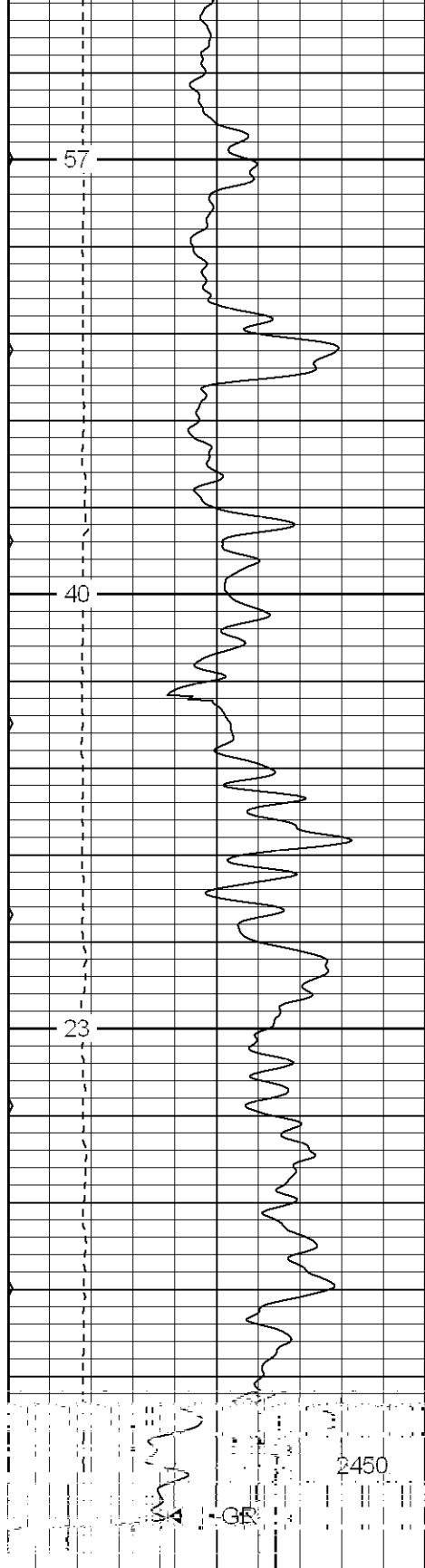
2100

2150

2200

2250

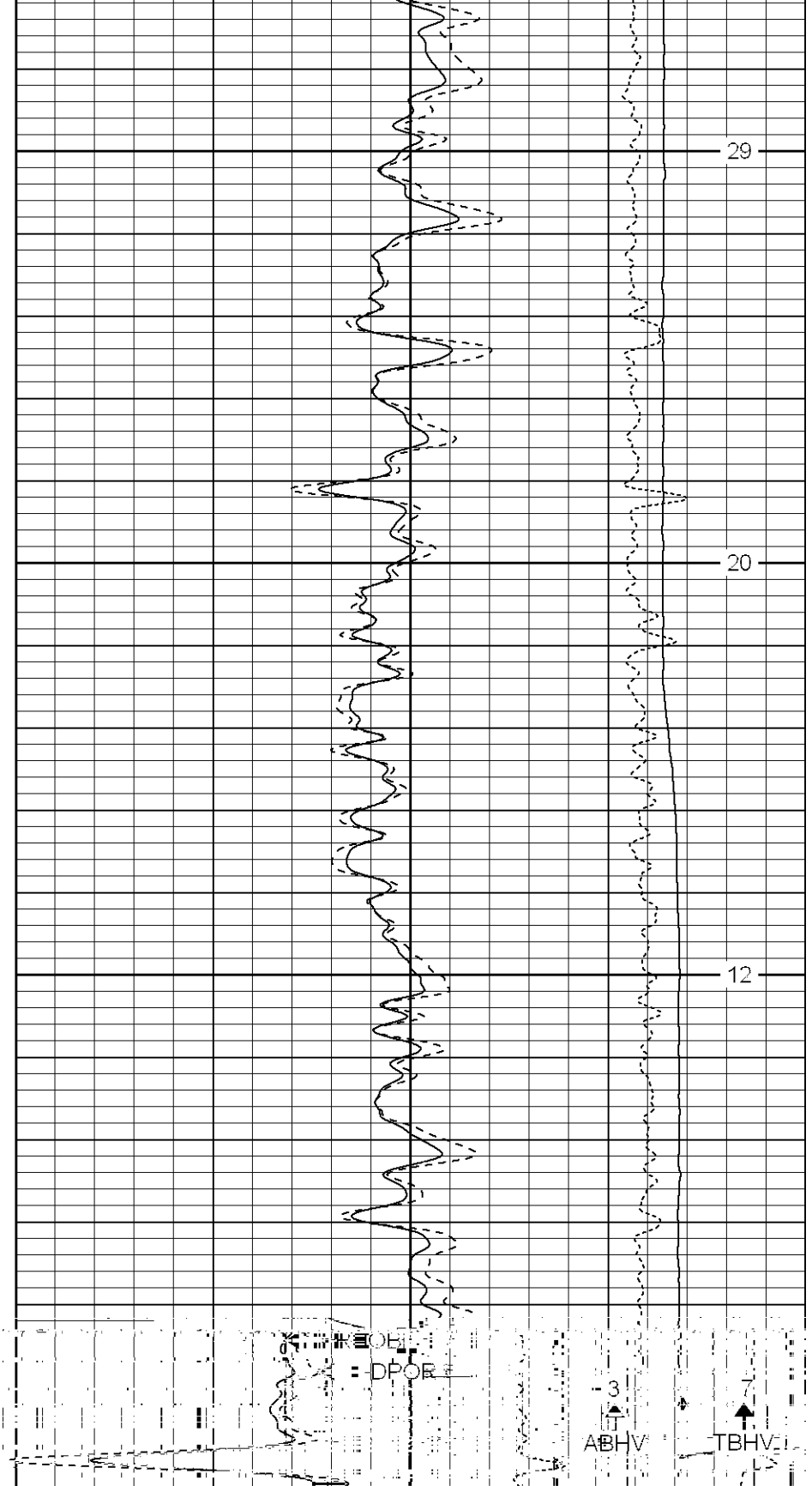




2300

2350

2400



29

20

12

2450

GR

DPOB

3
ABHV

7
TBHV

6	DCAL (in)	16
0	MINMK	80

1	RHOB (g/cc)	2
30	DPOR (pu)	-10
-0.5	RHOC (g/cc)	0.5
4000	LTEN (lb)	0

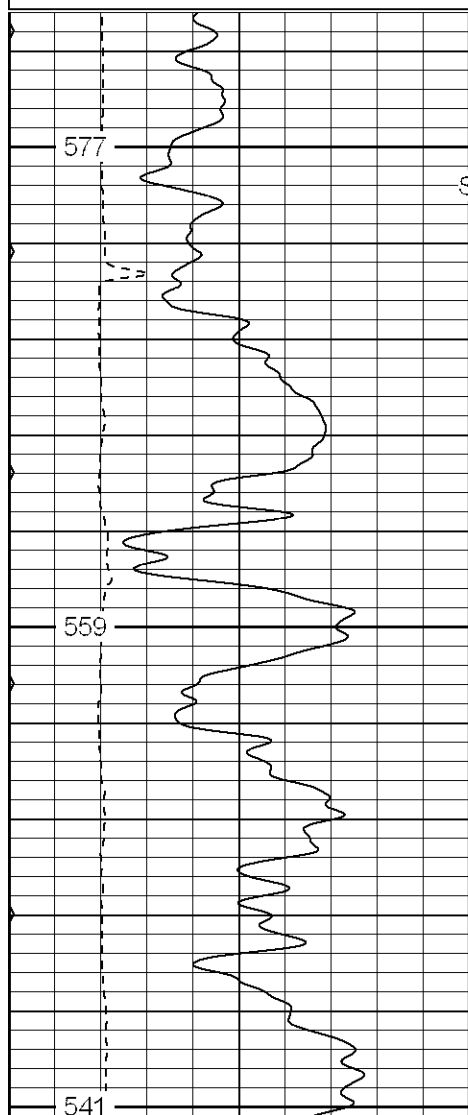
Patterson

Main Pass

Database File: xtoac1204.db
Dataset Pathname: pass2.1
Presentation Format: cdnl
Dataset Creation: Sun Aug 06 09:22:40 2006 by Calc Warrior 7.0 STD Ope
Charted by: Depth in Feet scaled 1:240

0	GR (GAPI)	200
6	DCAL (in)	16
0	MINMK	80

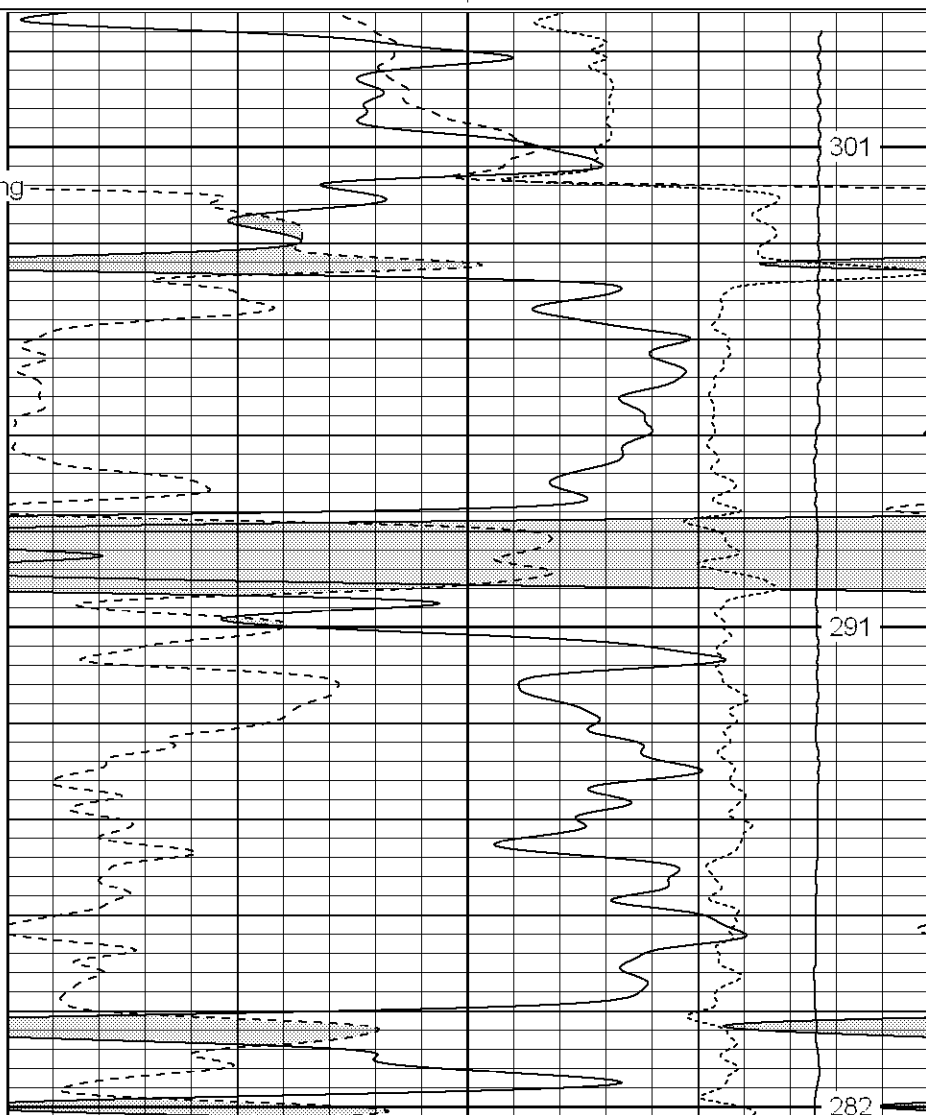
30	NPOR (pu)	-10
30	DPOR (pu)	-10
-0.5	RHOC (g/cc)	0.5
4000	LTEN (lb)	0

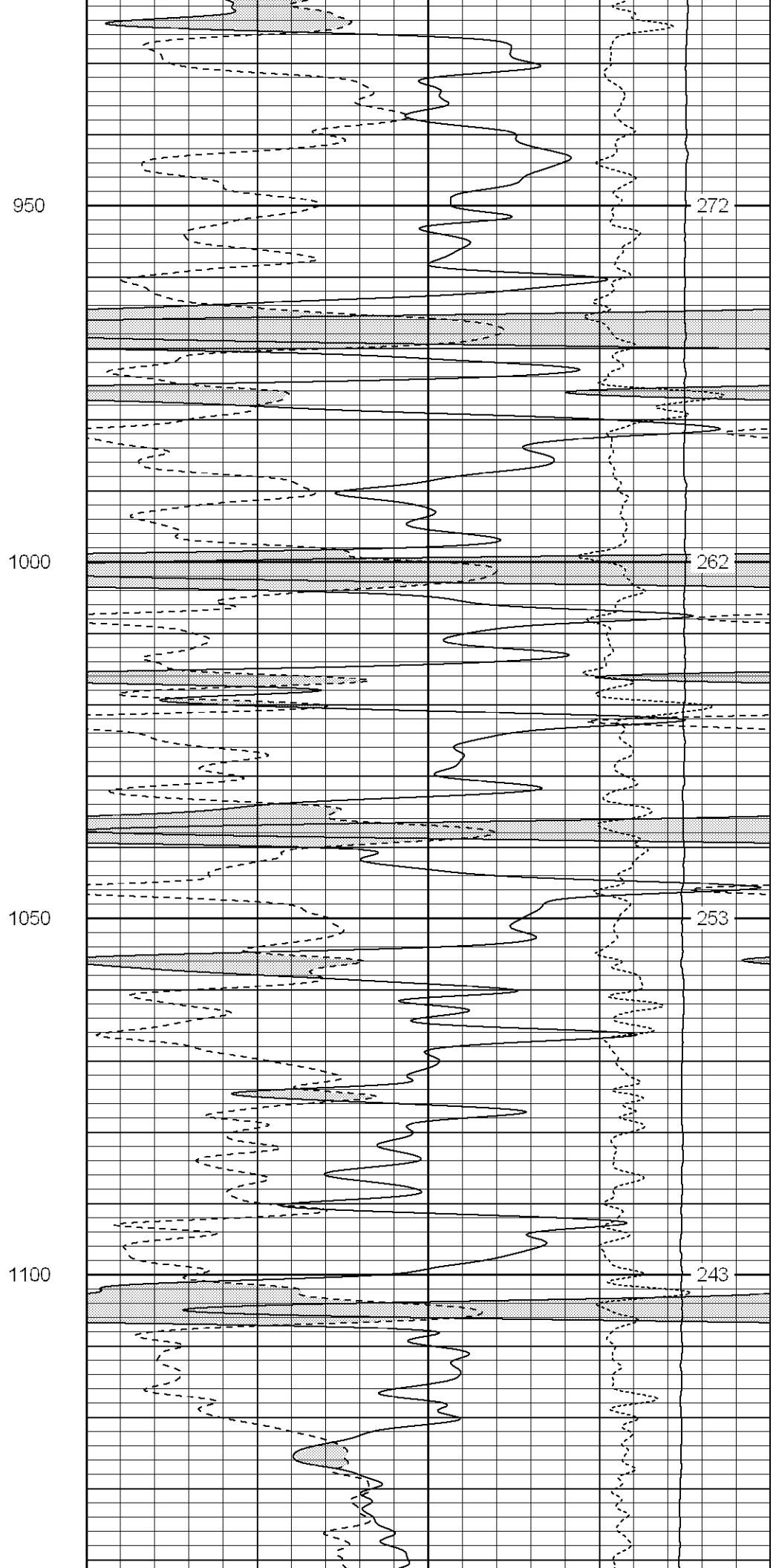
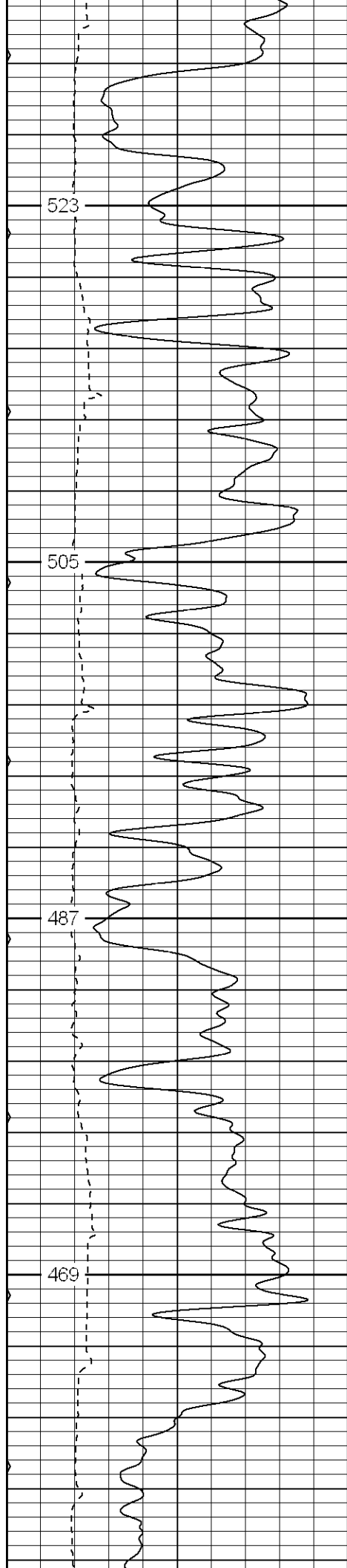


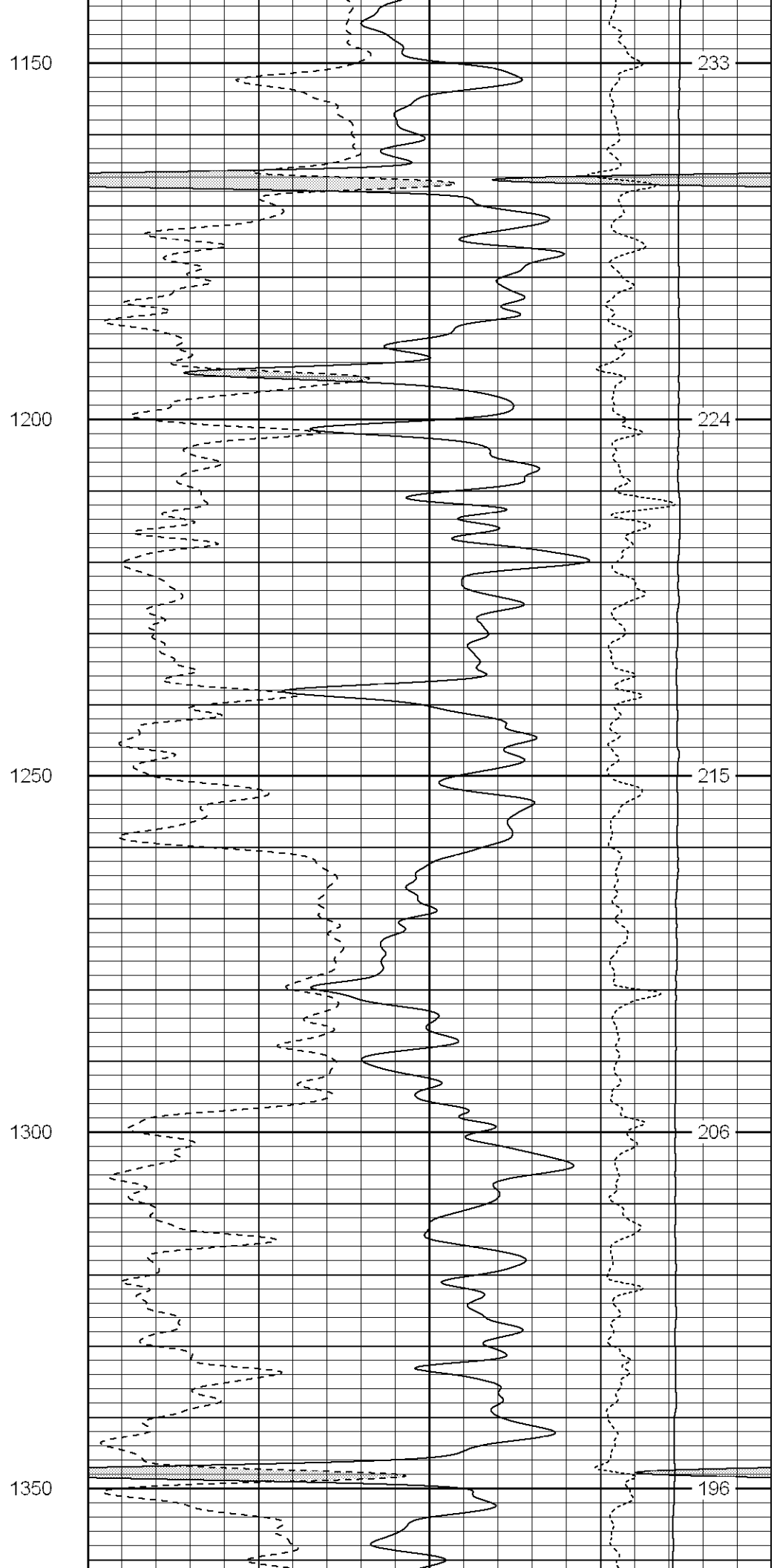
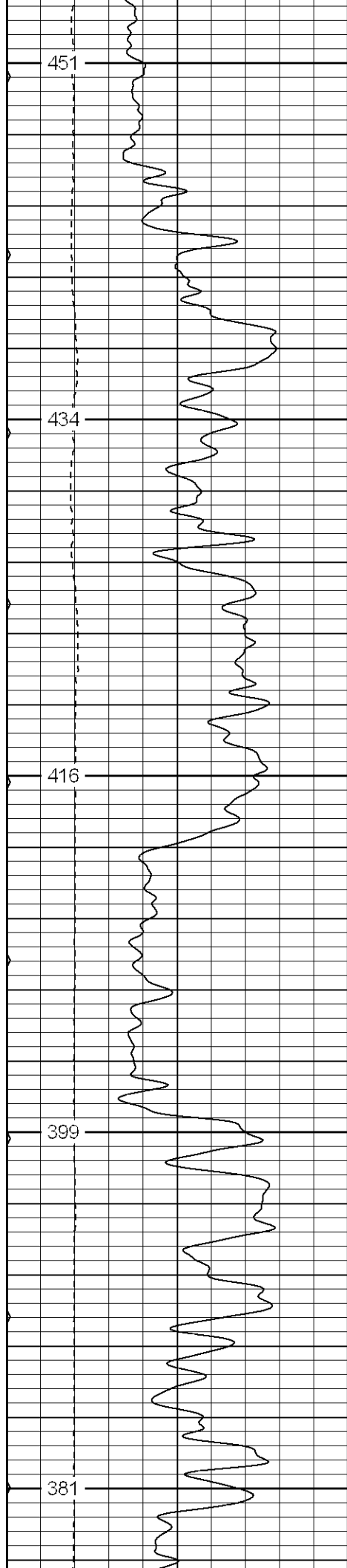
800
Surface Casing

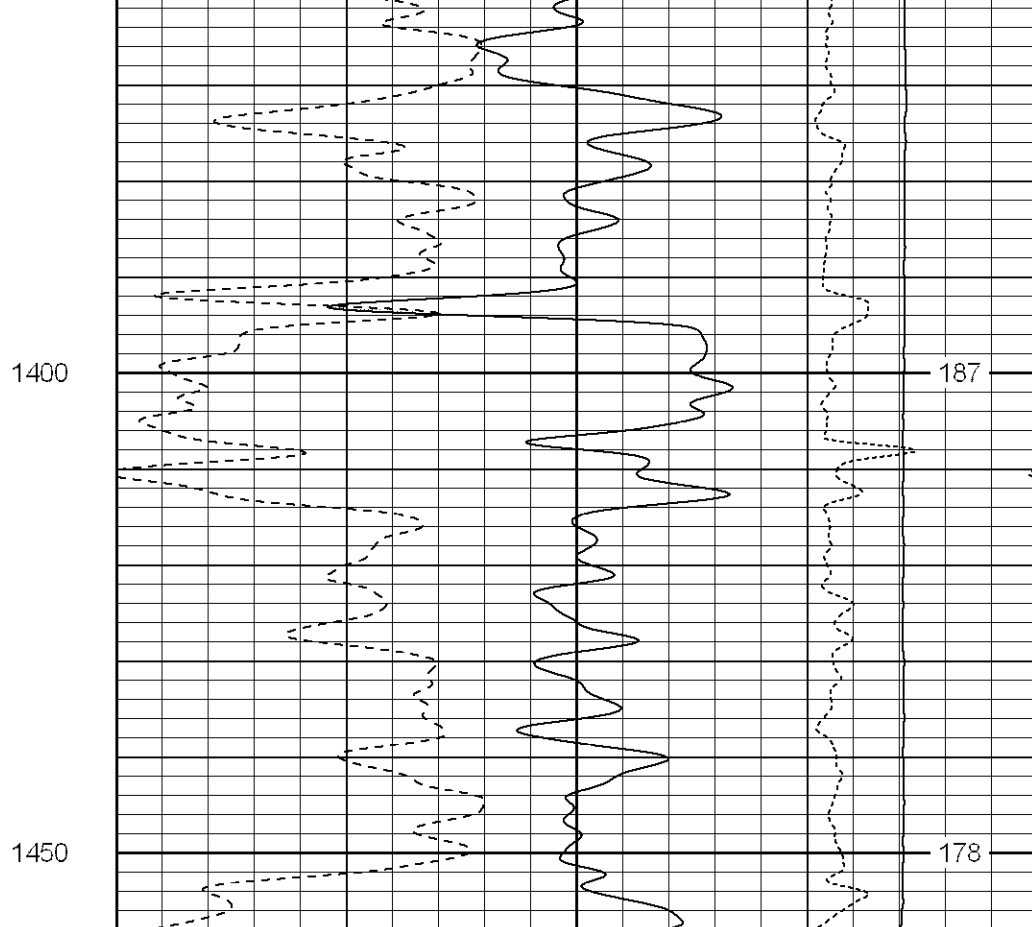
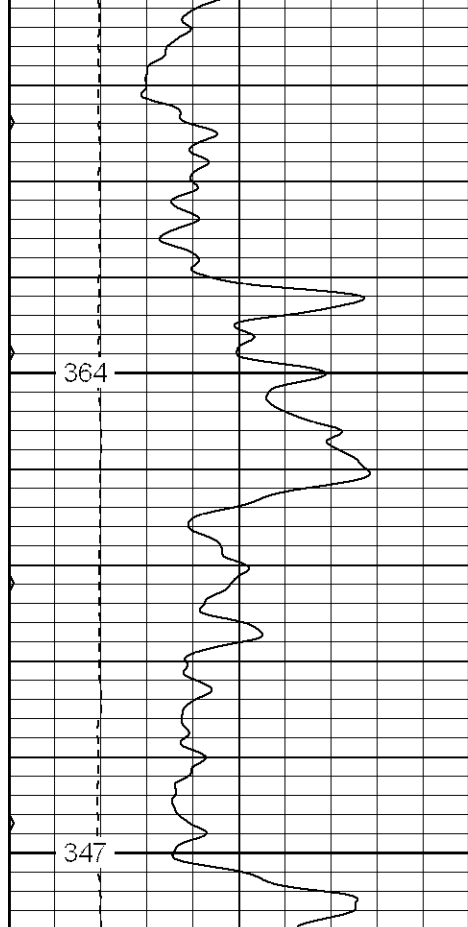
850

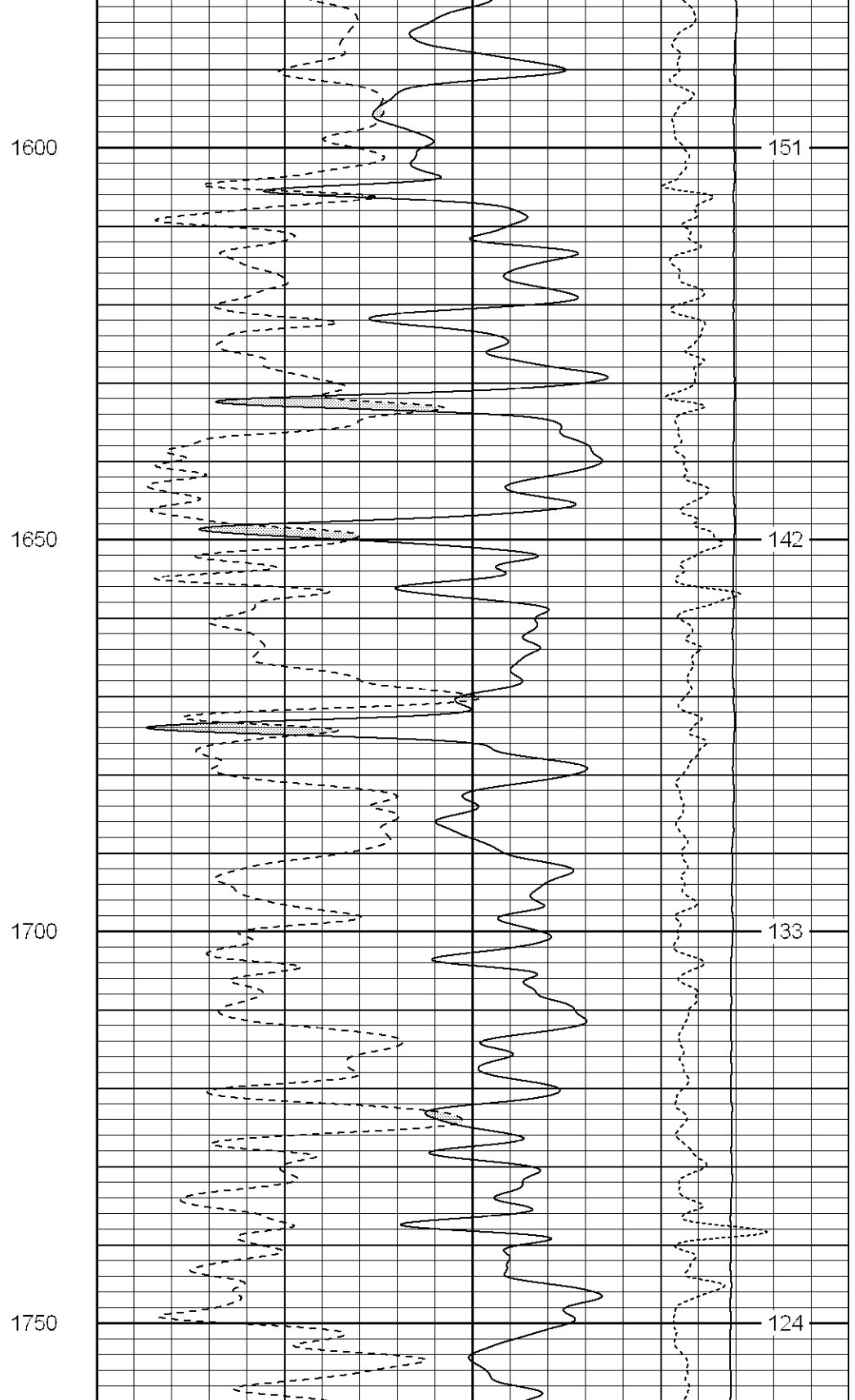
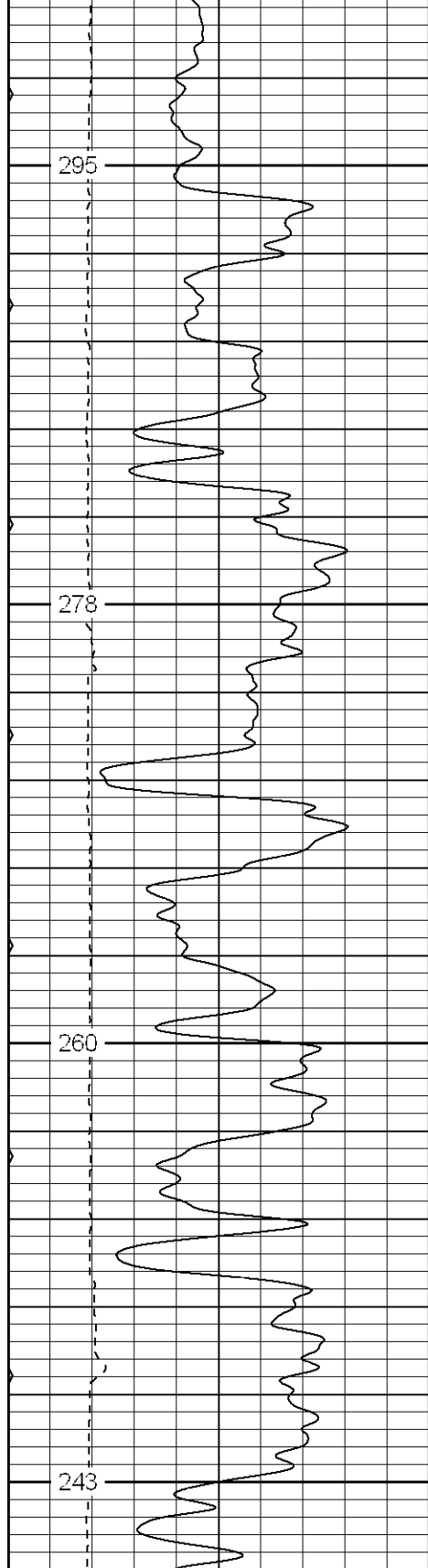
900

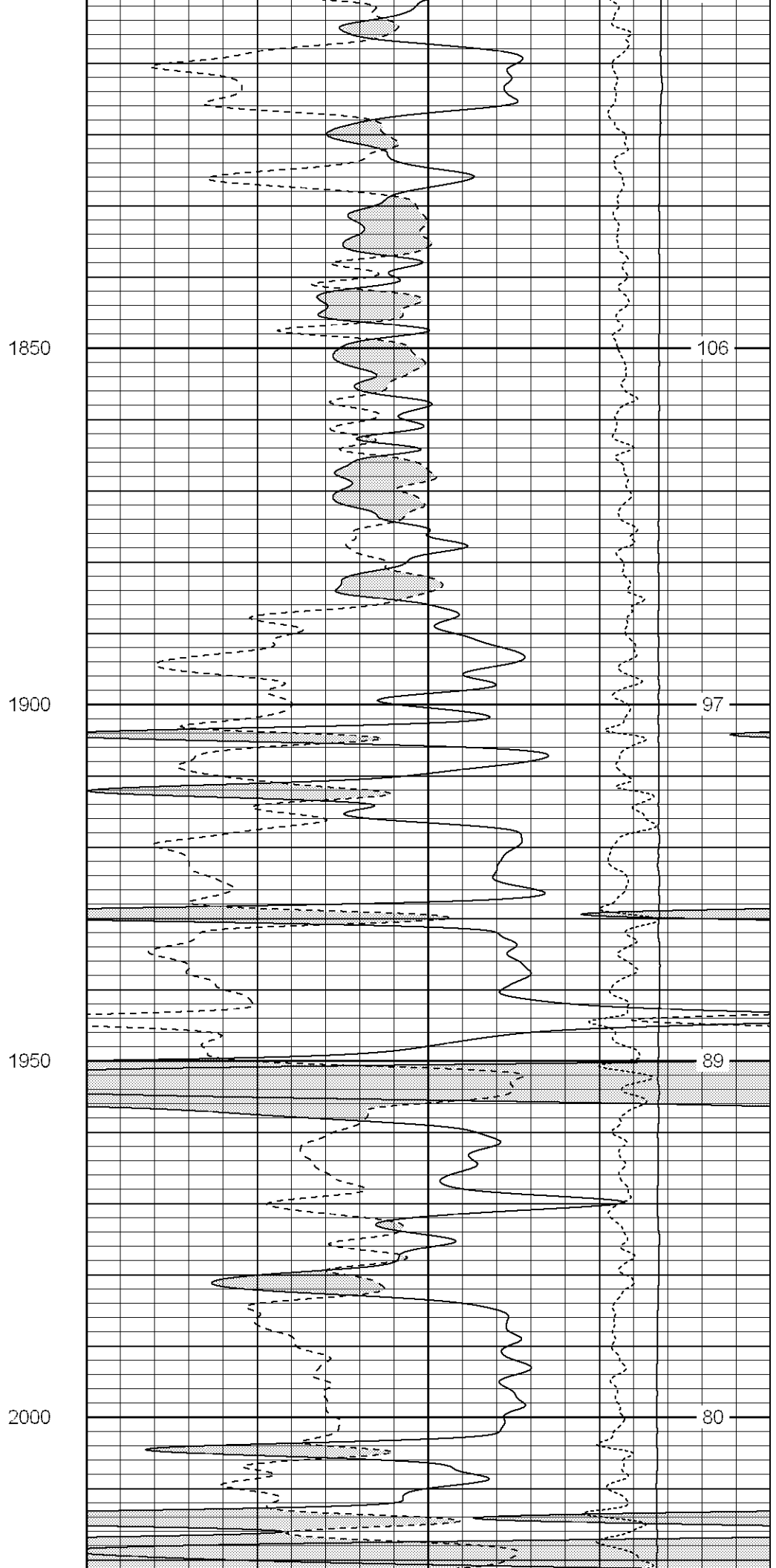
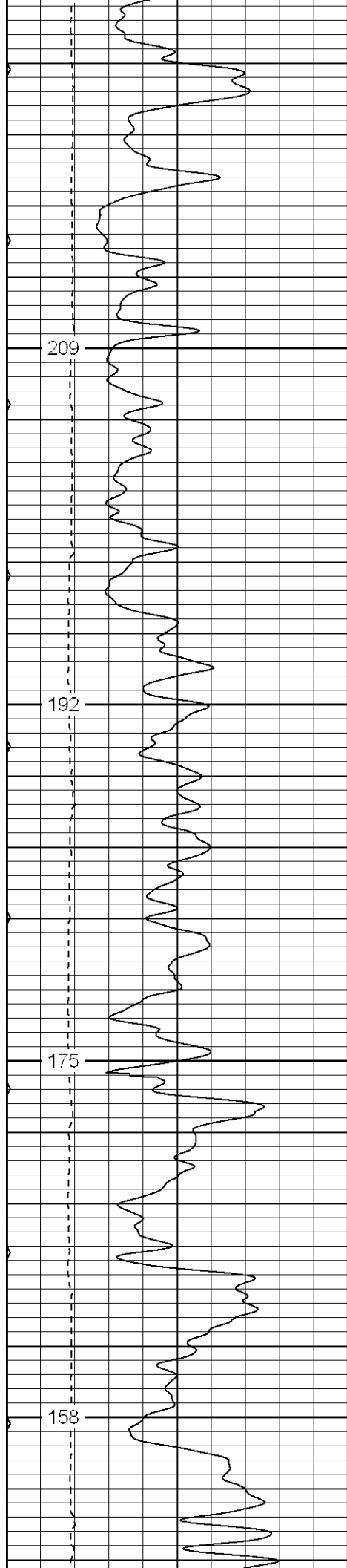


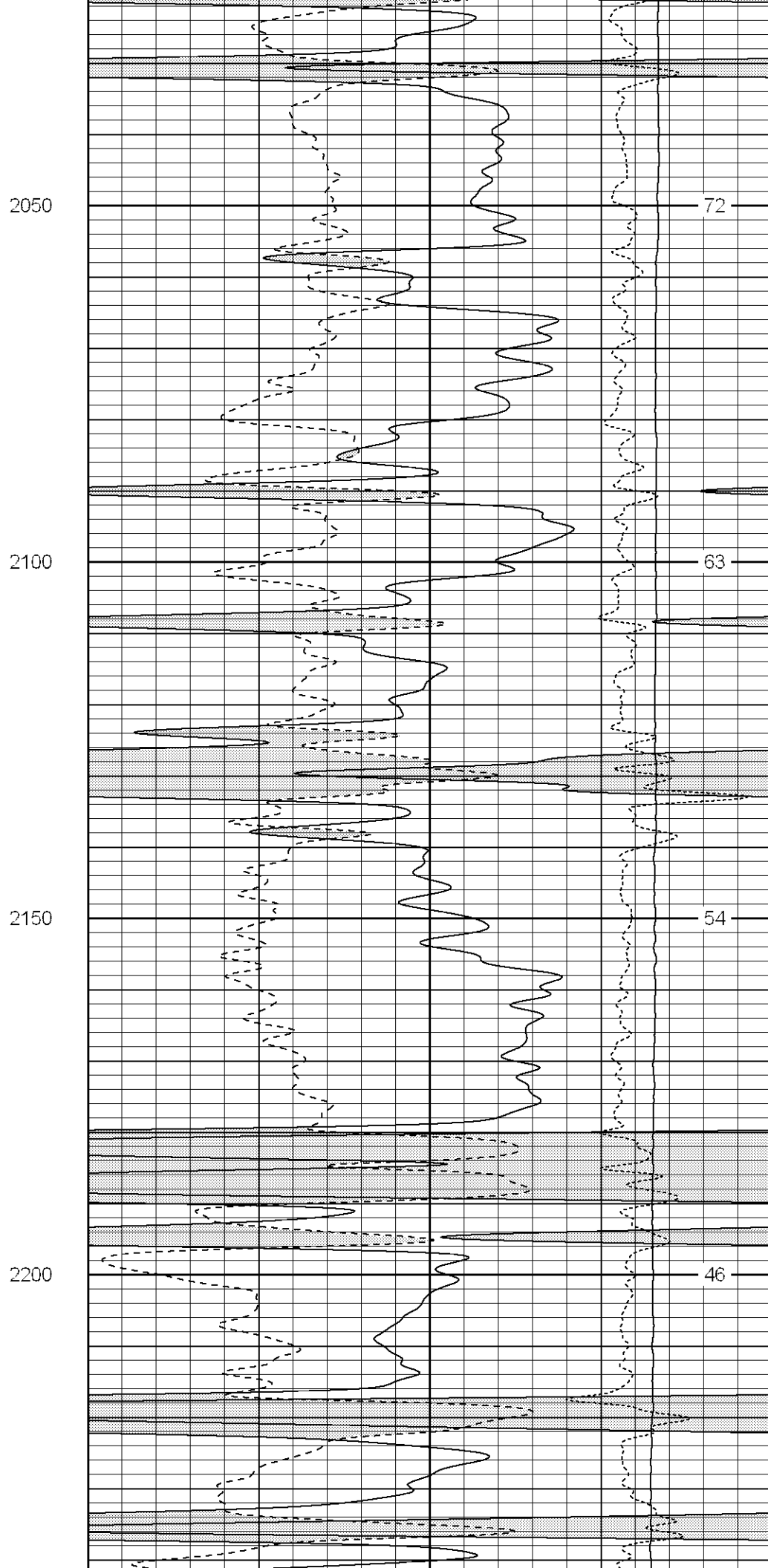
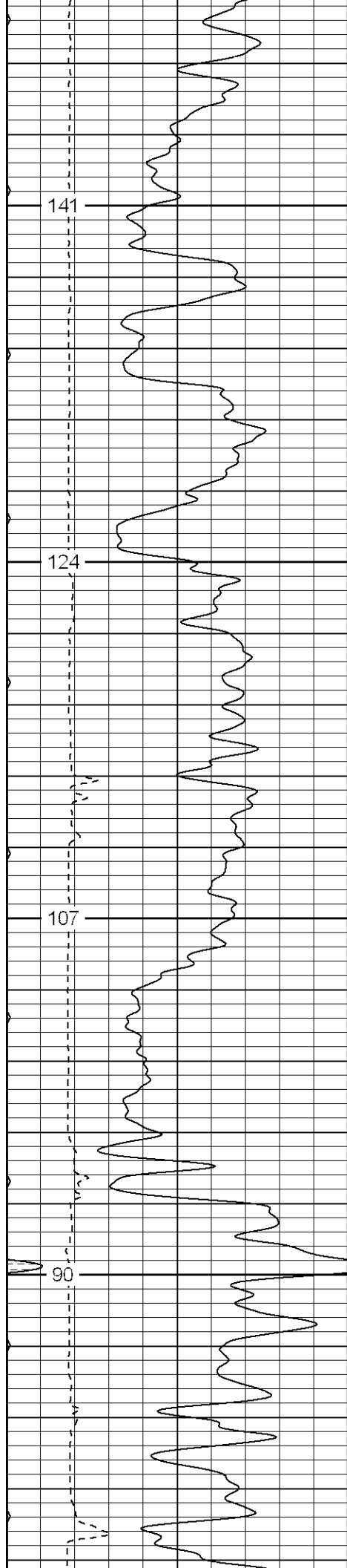


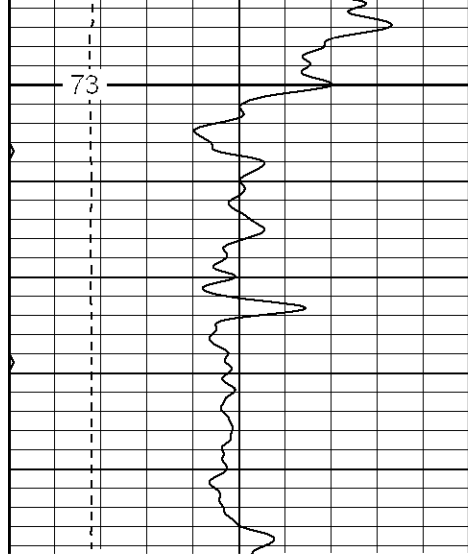




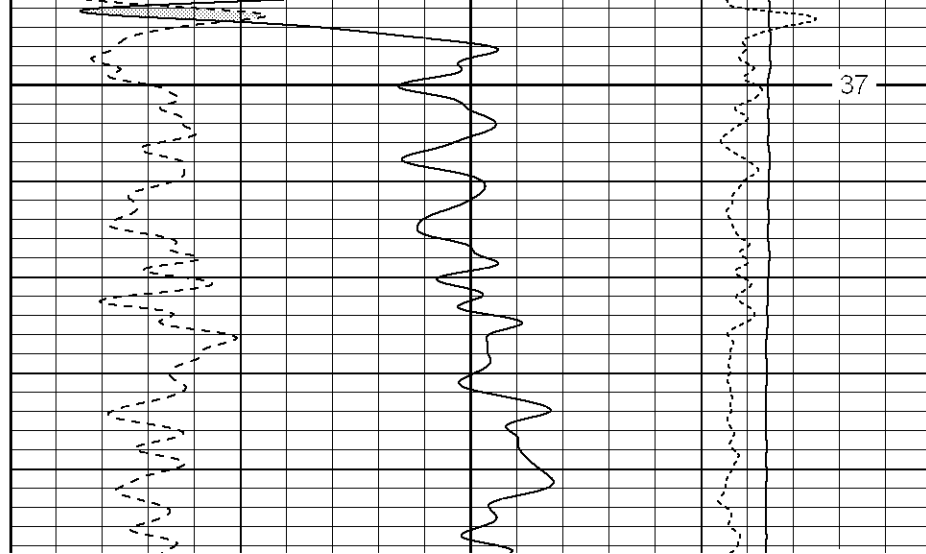


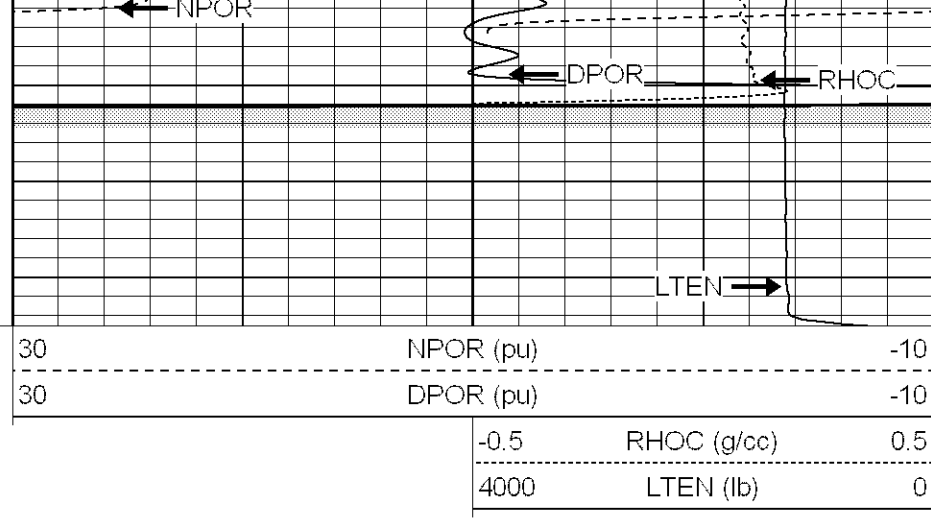
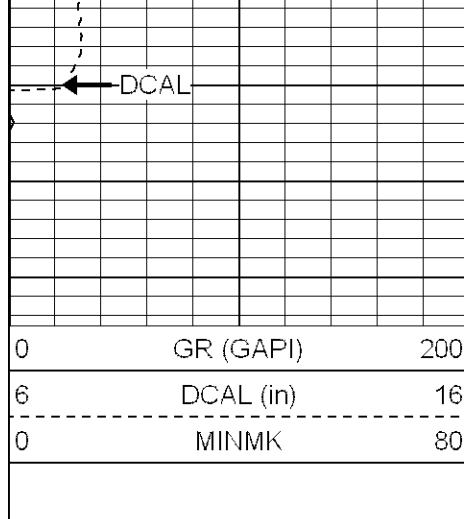






2250

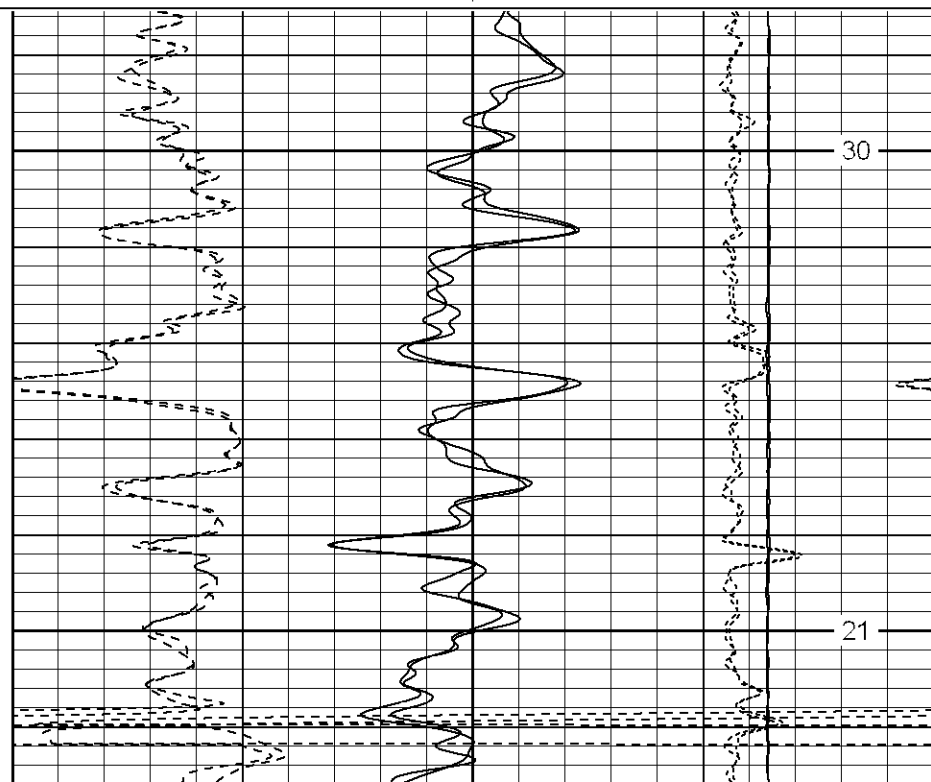
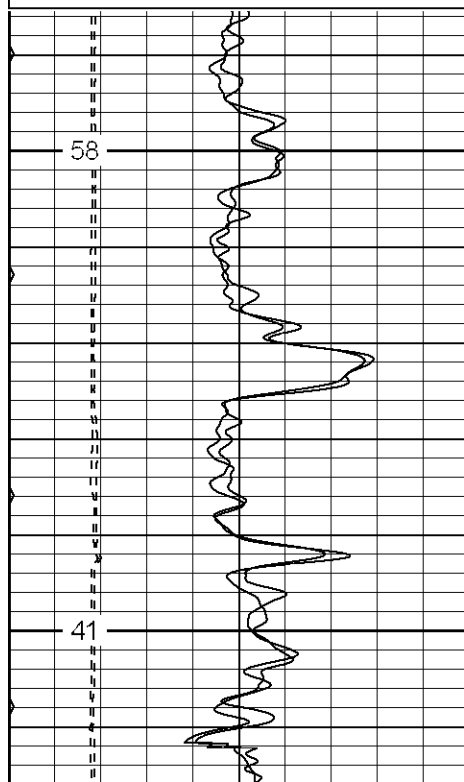
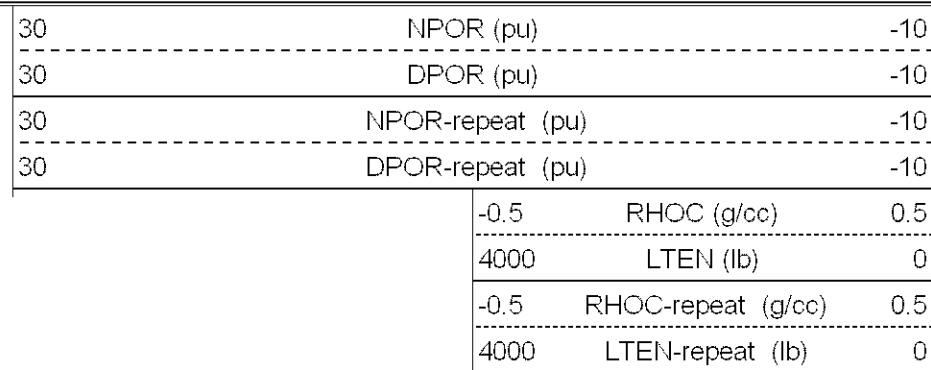
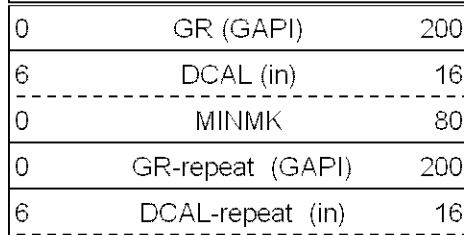


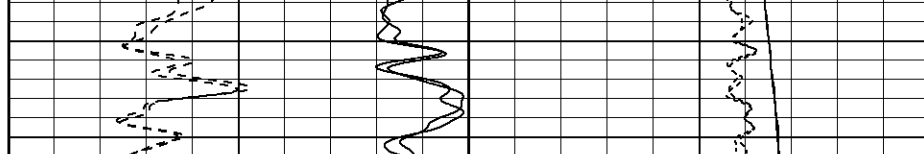
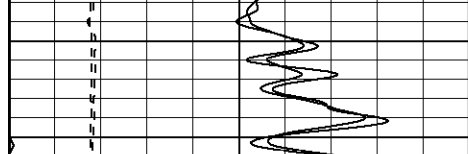


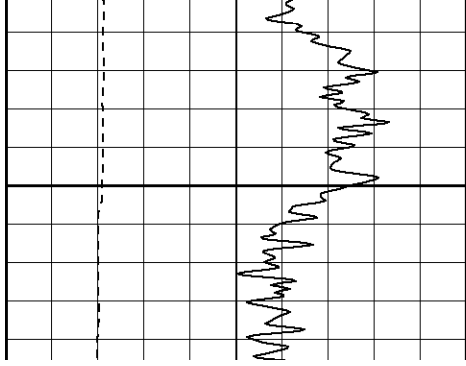
Patterson

Repeat Pass

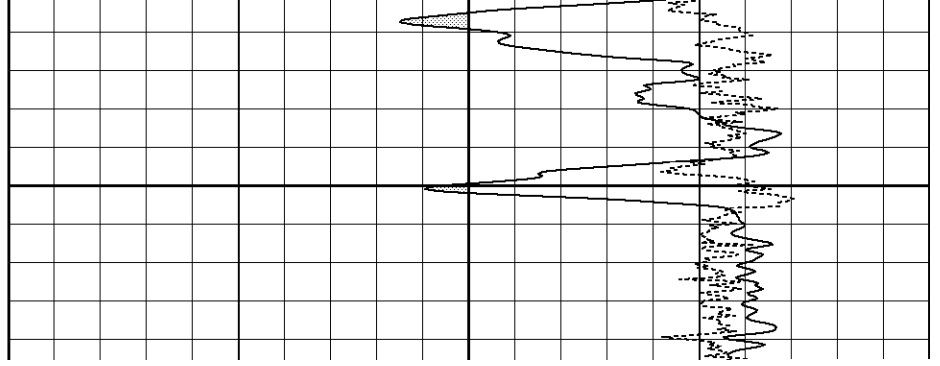
Database File: xtoac1204.db
 Dataset Pathname: pass1.1
 Presentation Format: cdnl
 Dataset Creation: Sun Aug 06 08:41:16 2006 by Calc Warrior 7.0 STD Ope
 Charted by: Depth in Feet scaled 1:240







900

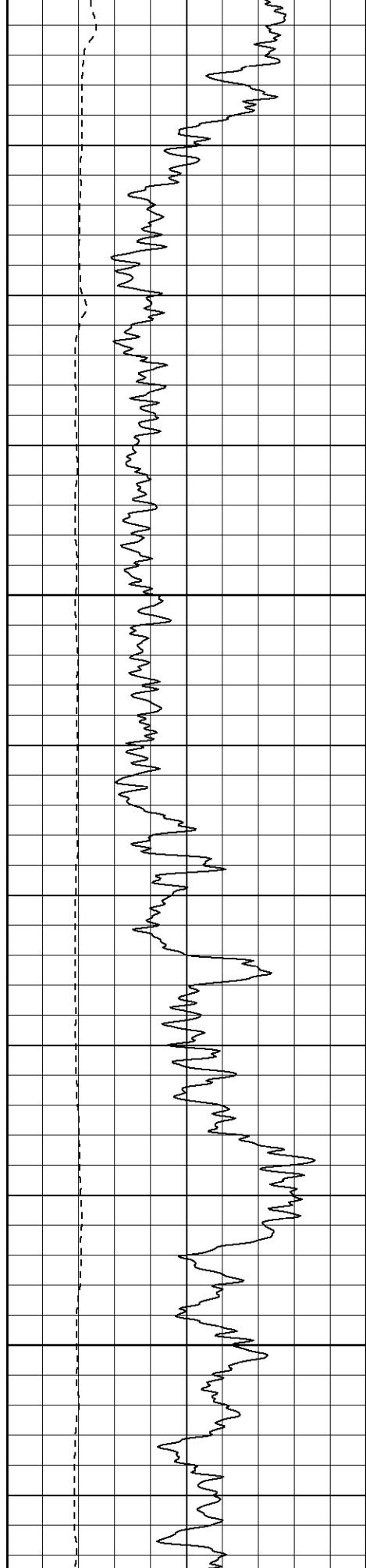


W

1000

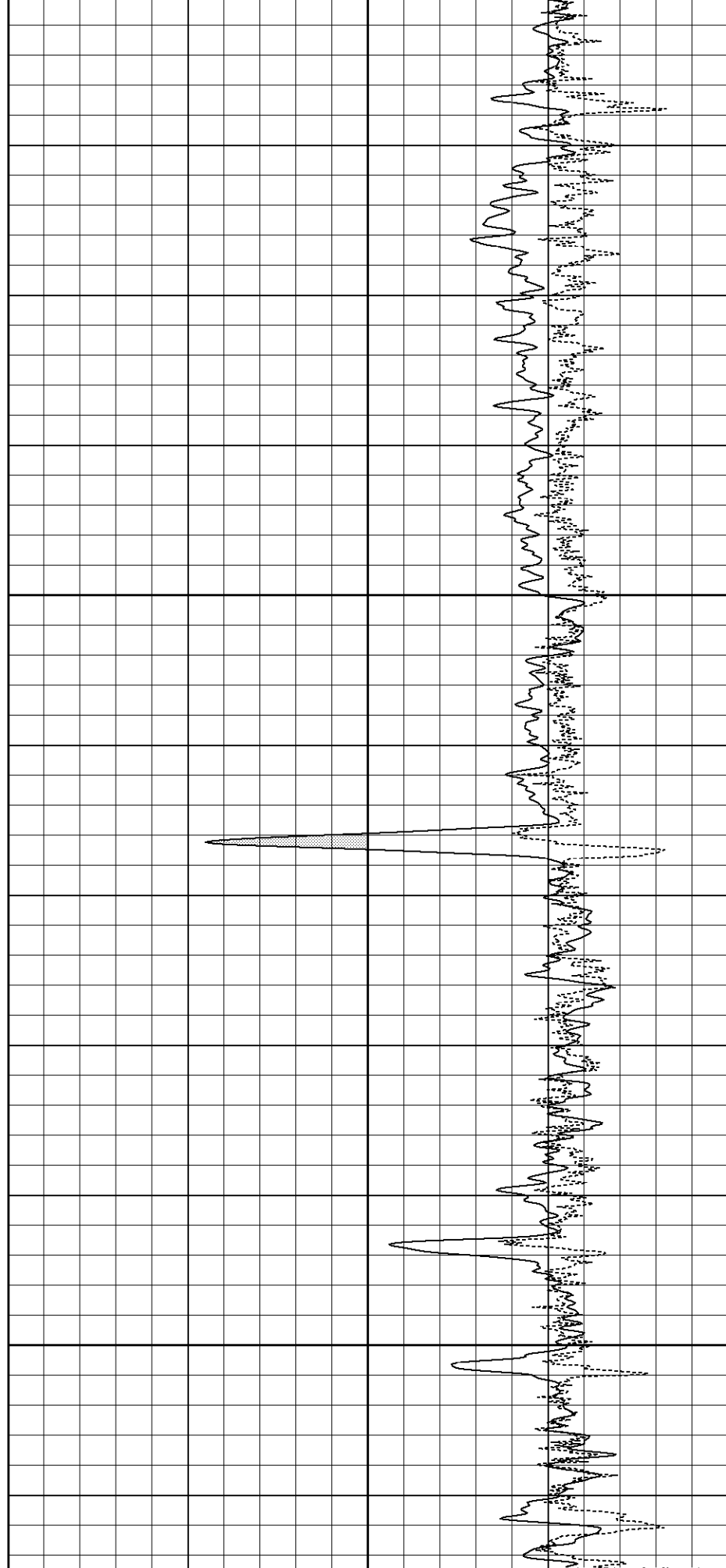
W

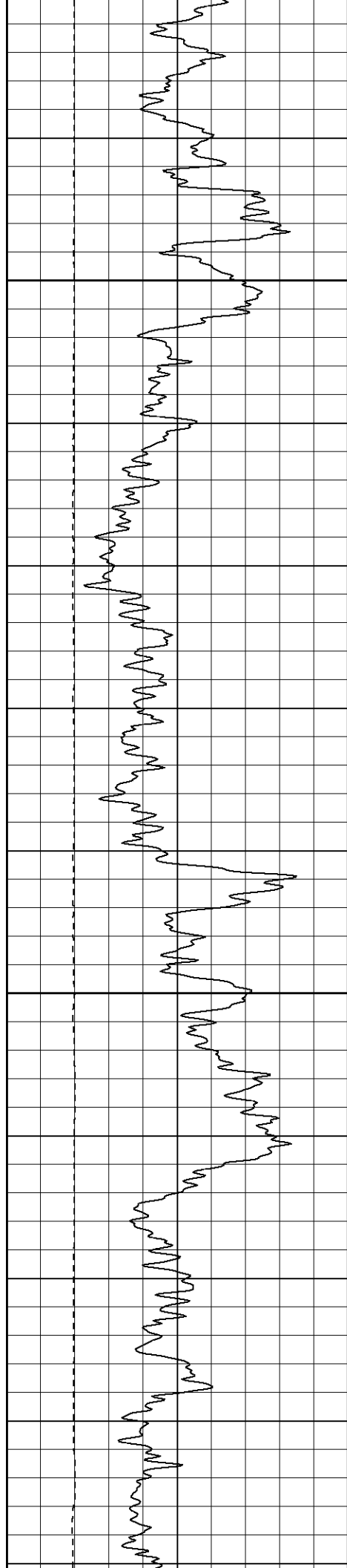
W



1150

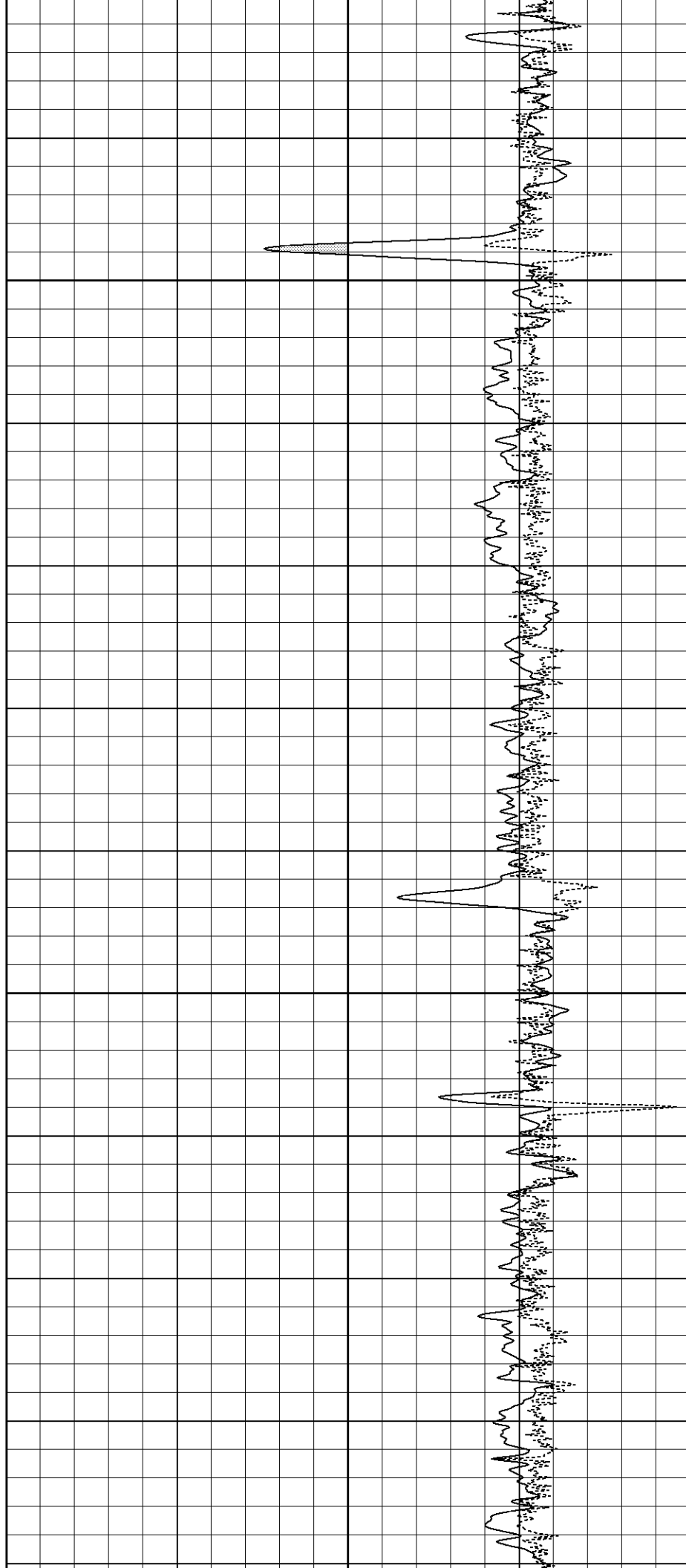
1200

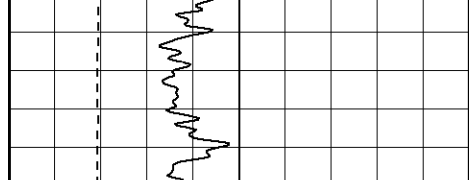




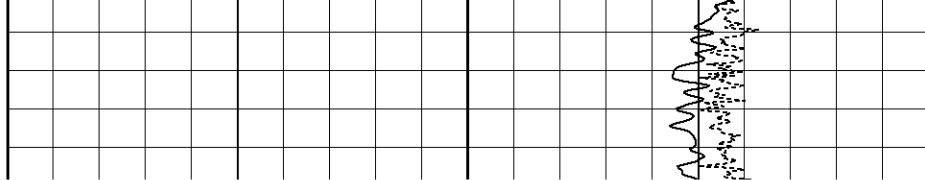
1350

1400





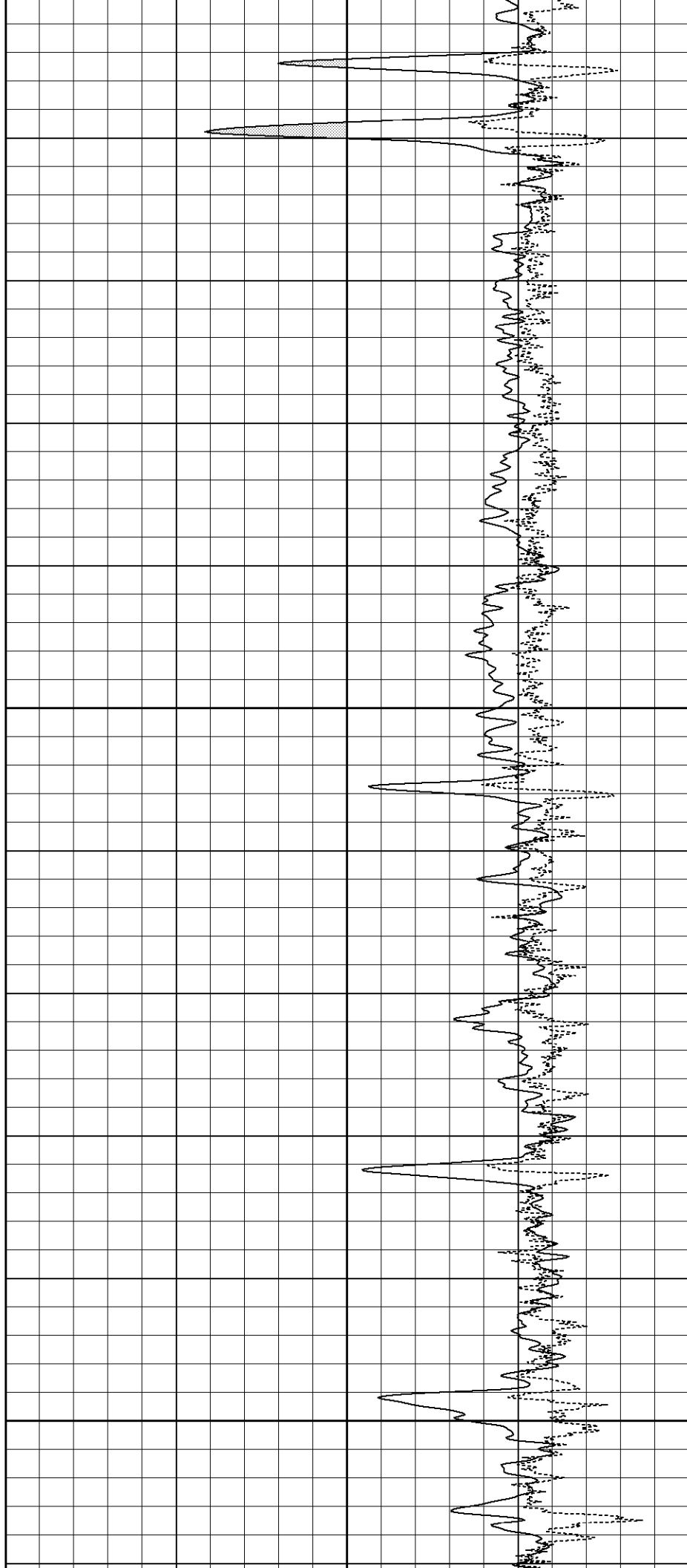
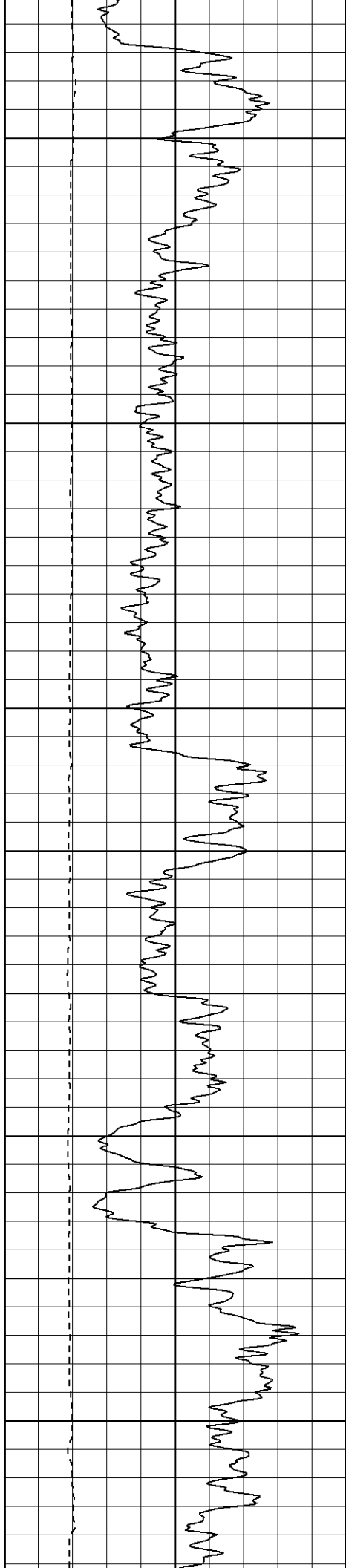
1.50

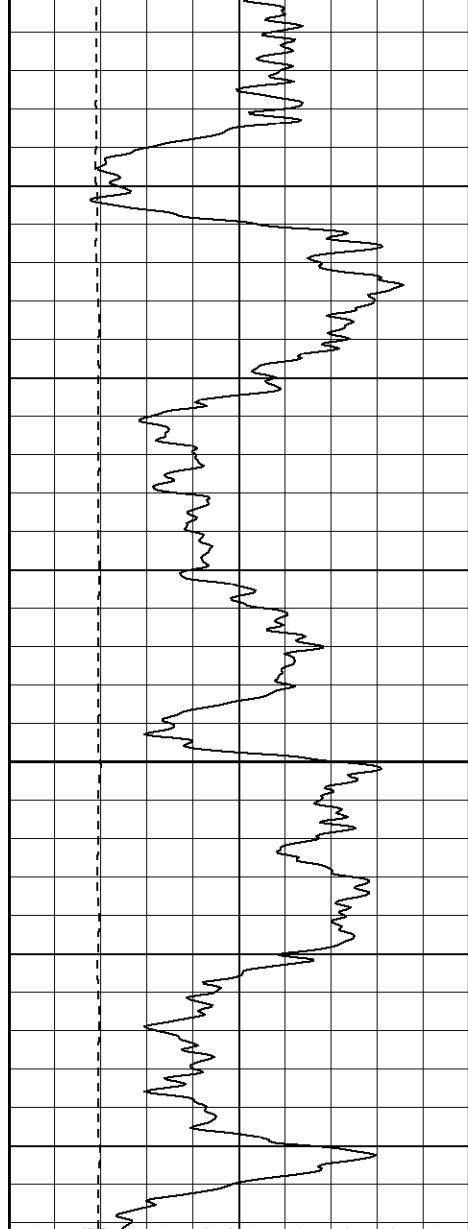


1630

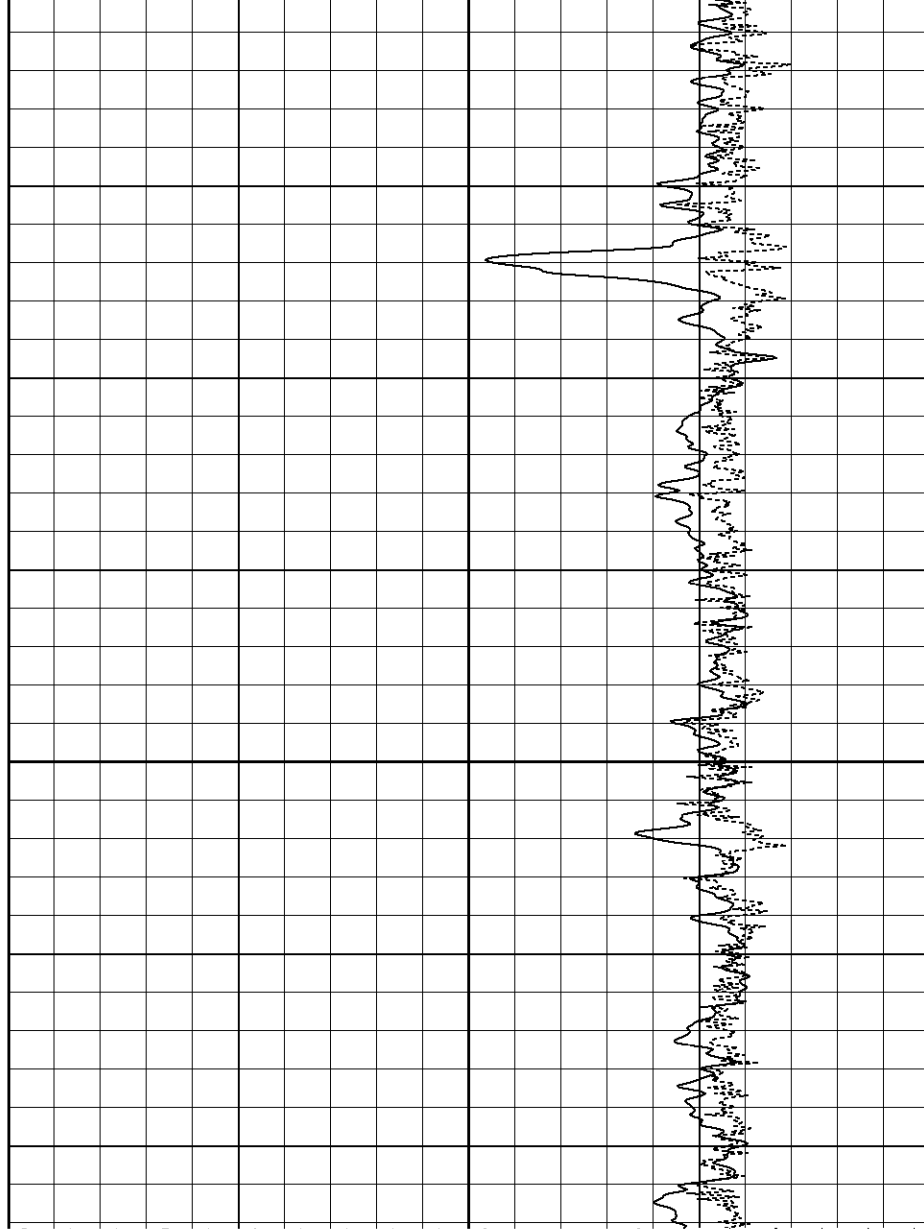
1600

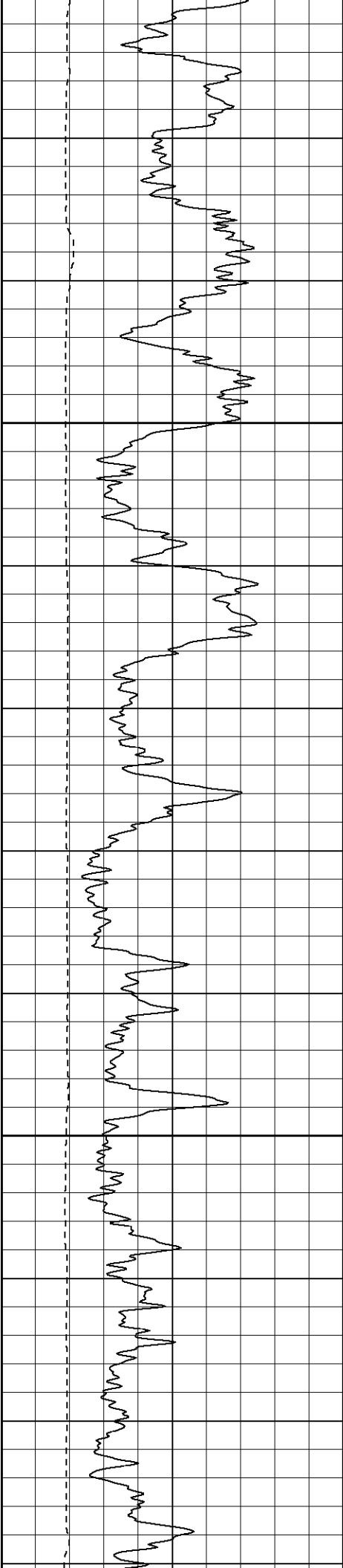
1650





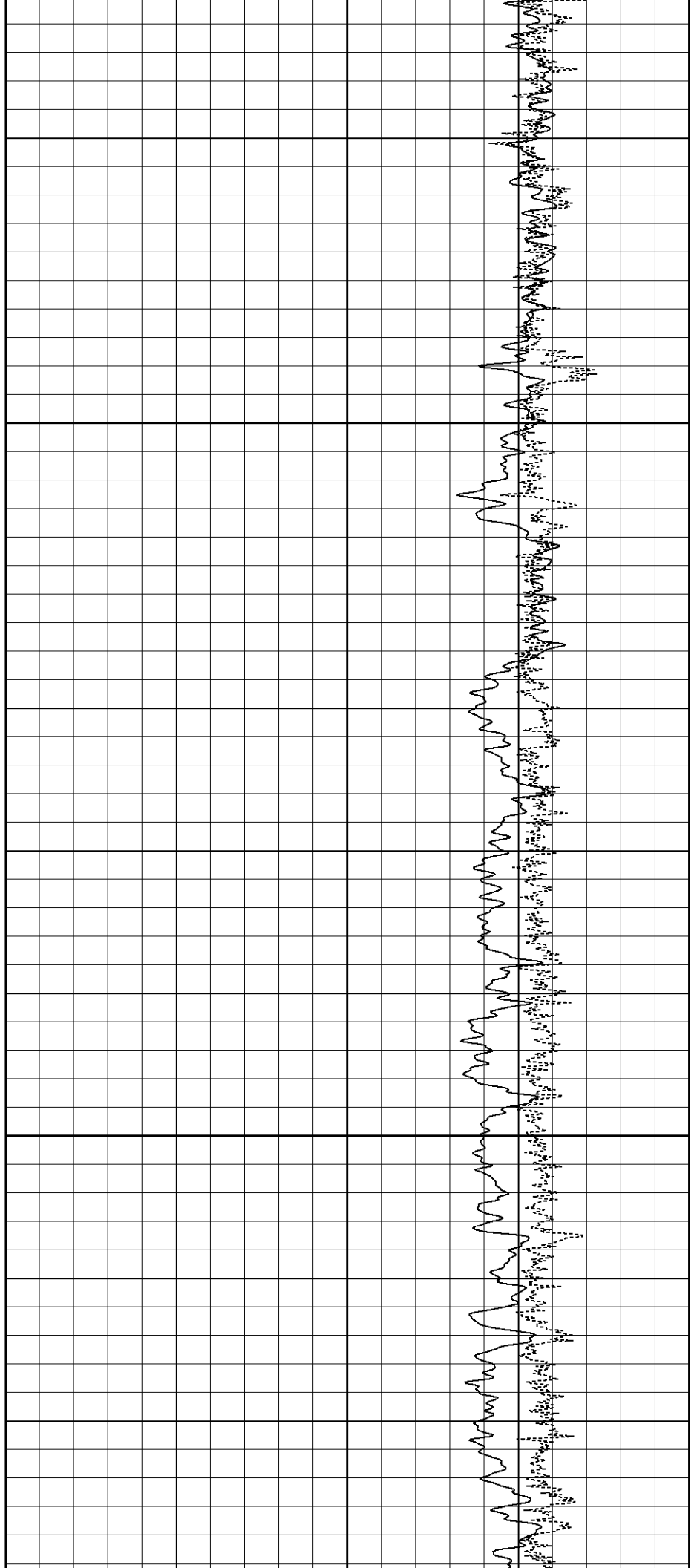
1700

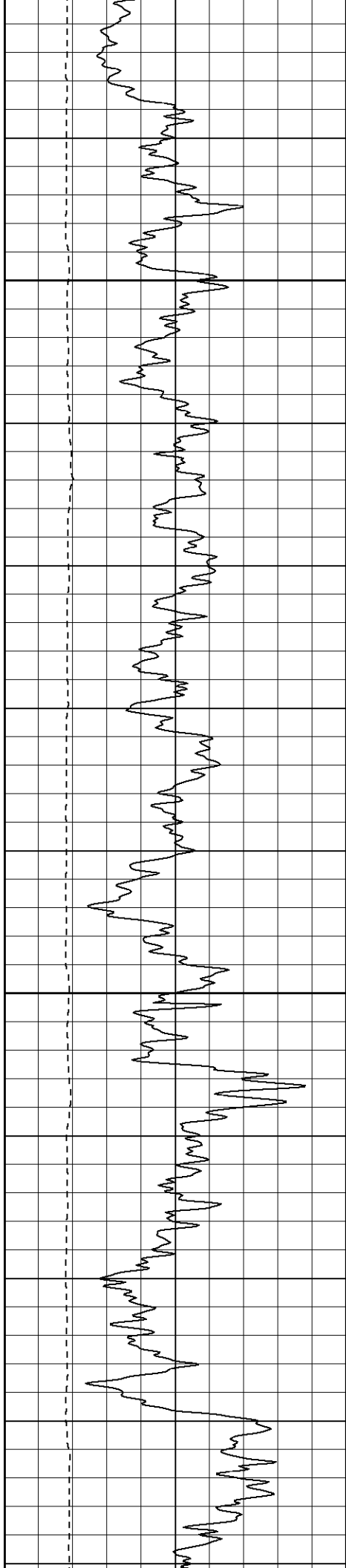




1800

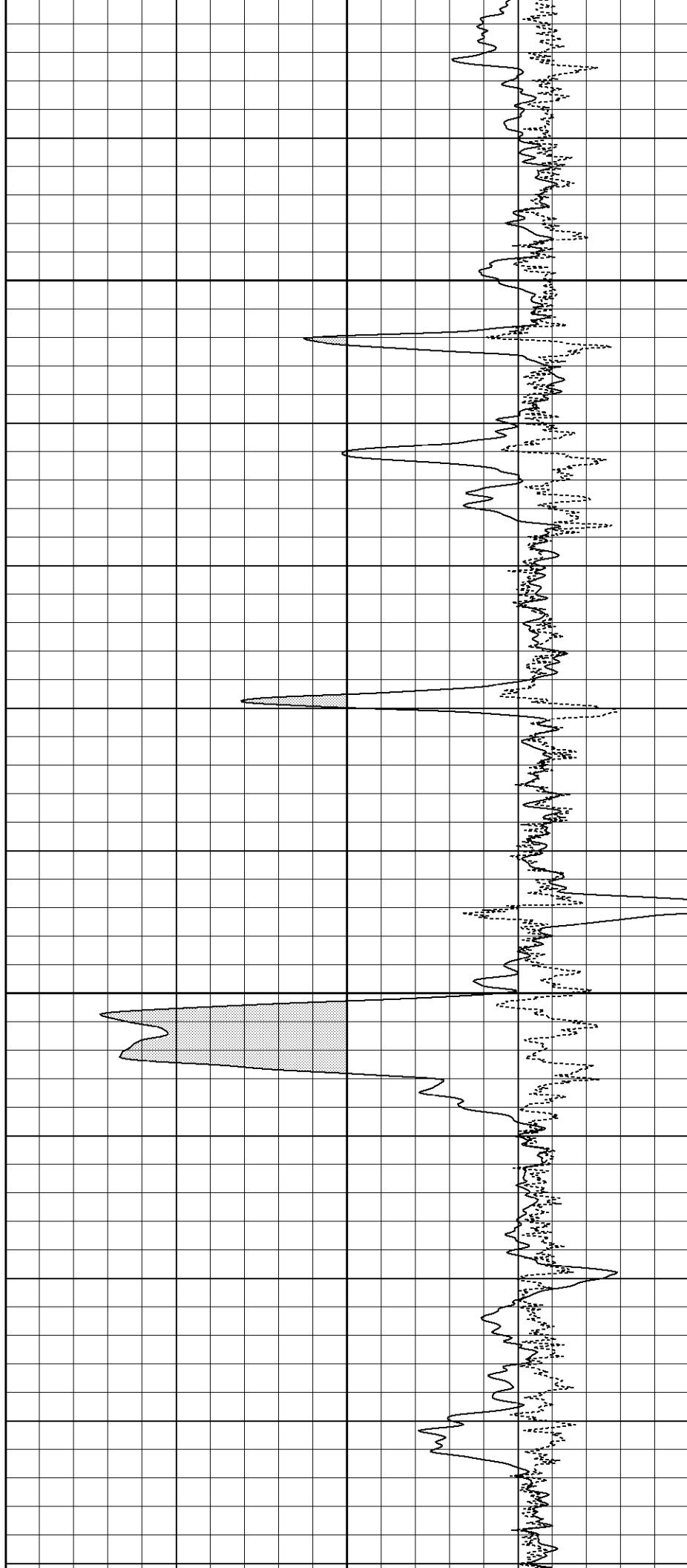
1850

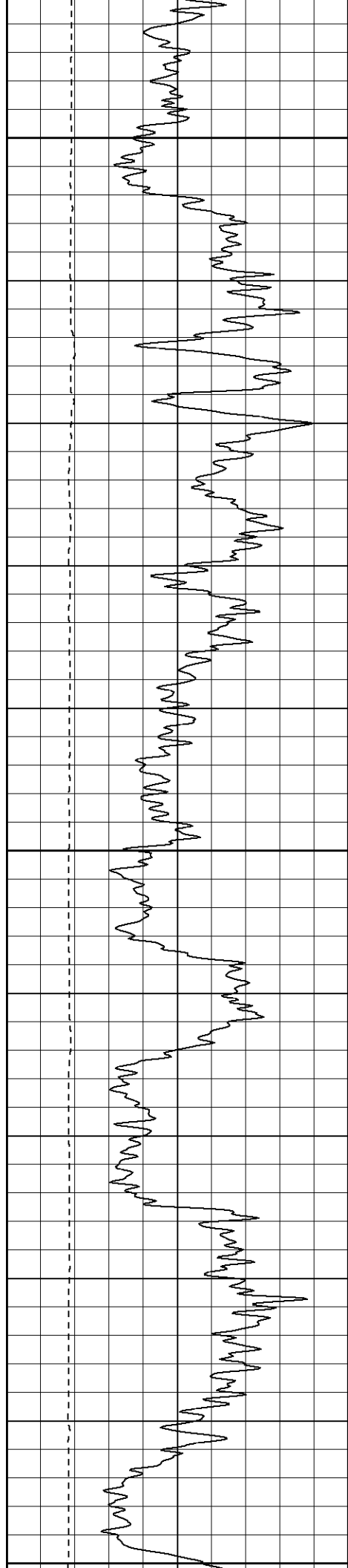




1900

1950

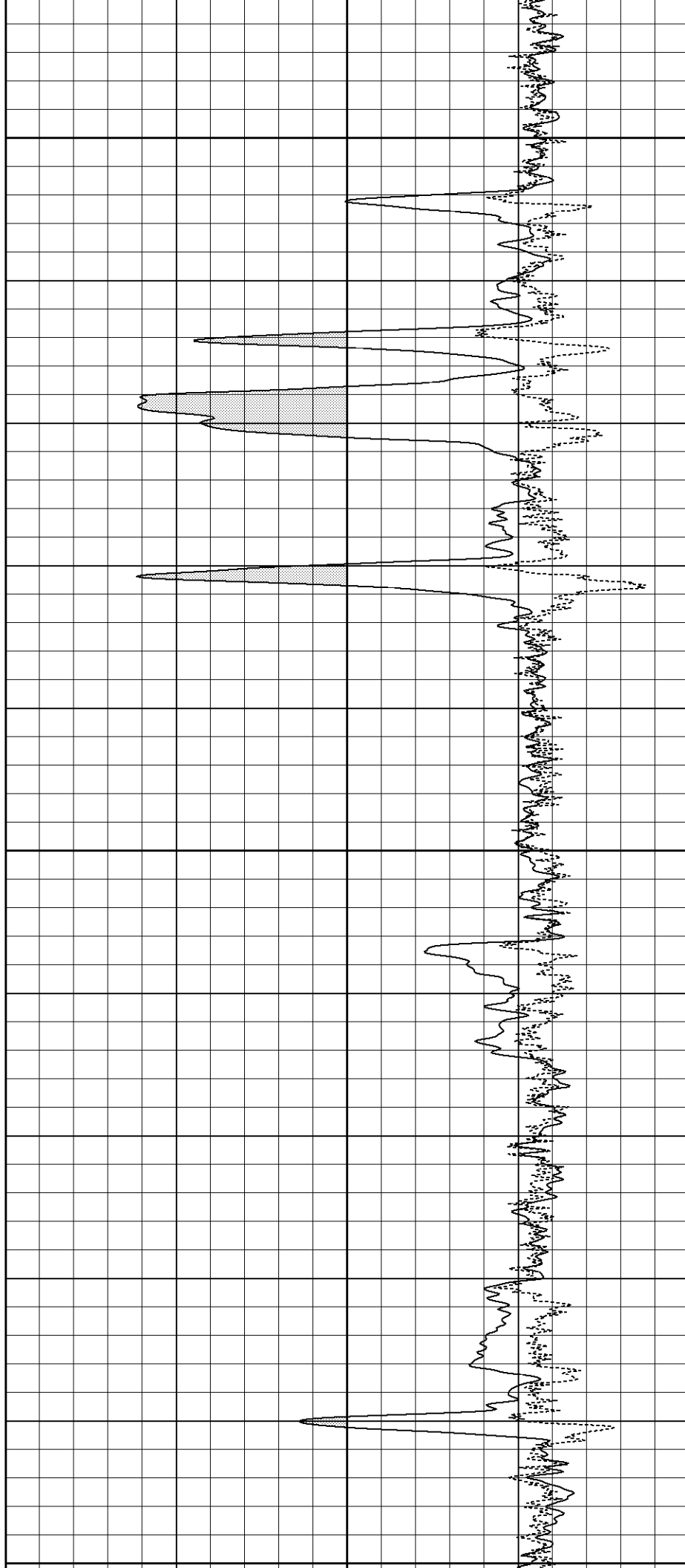


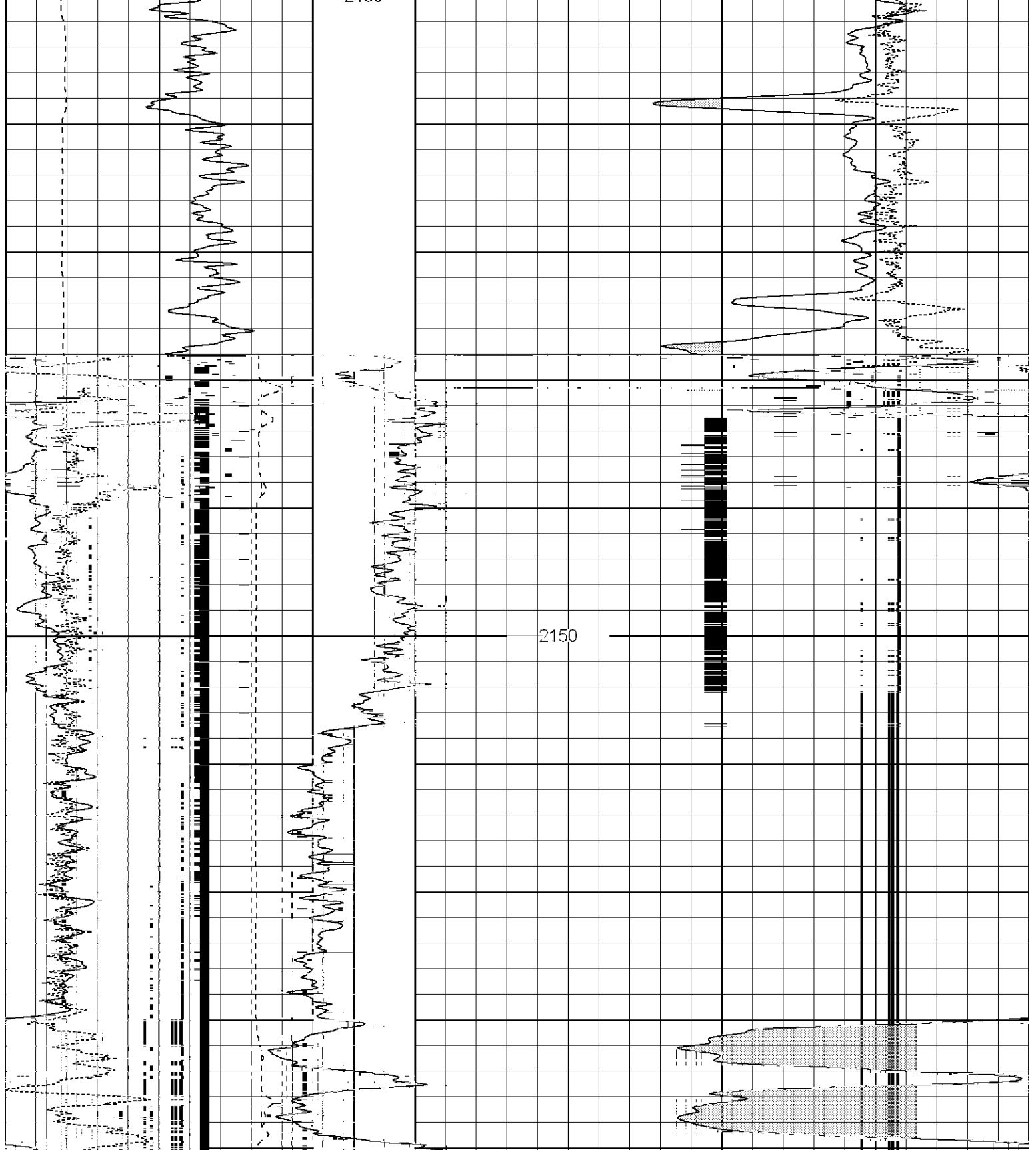


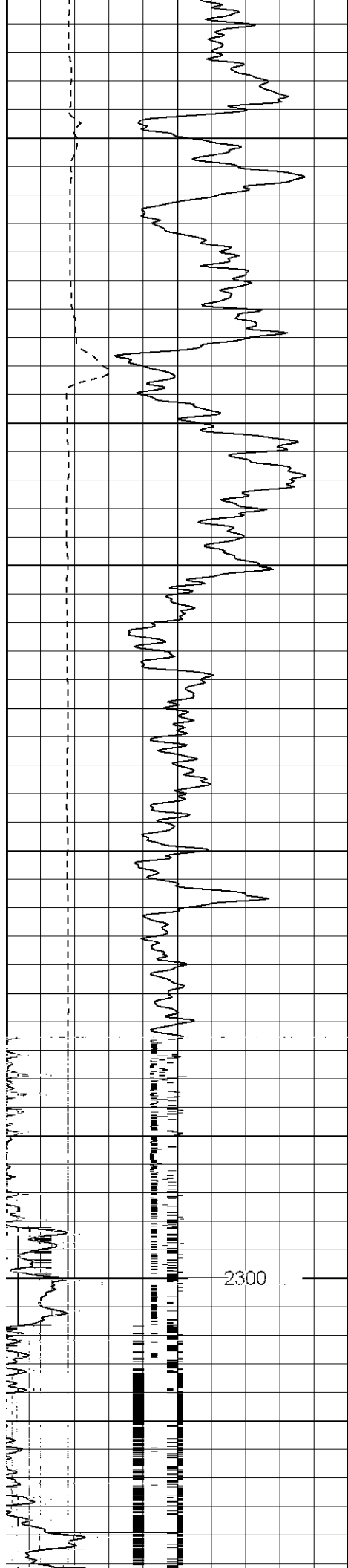
2000

2050

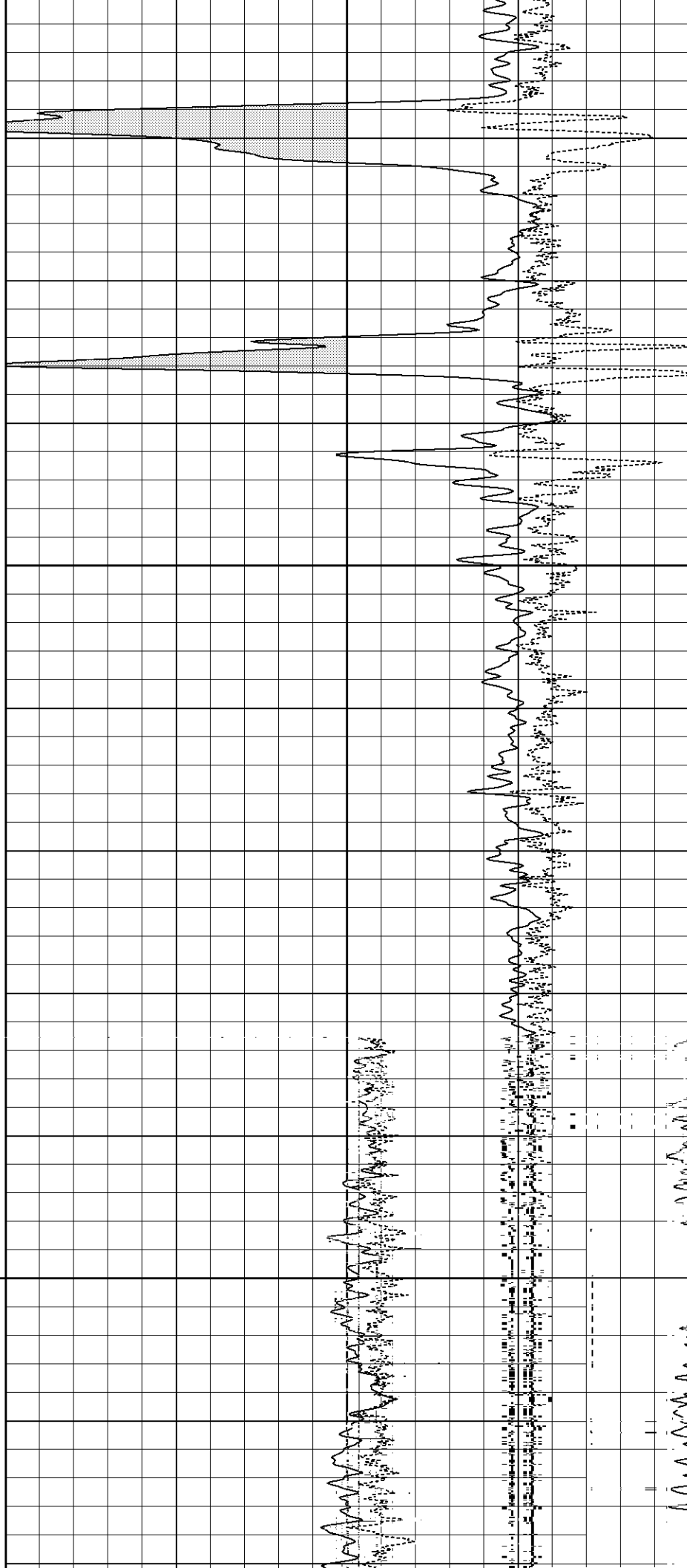
2100



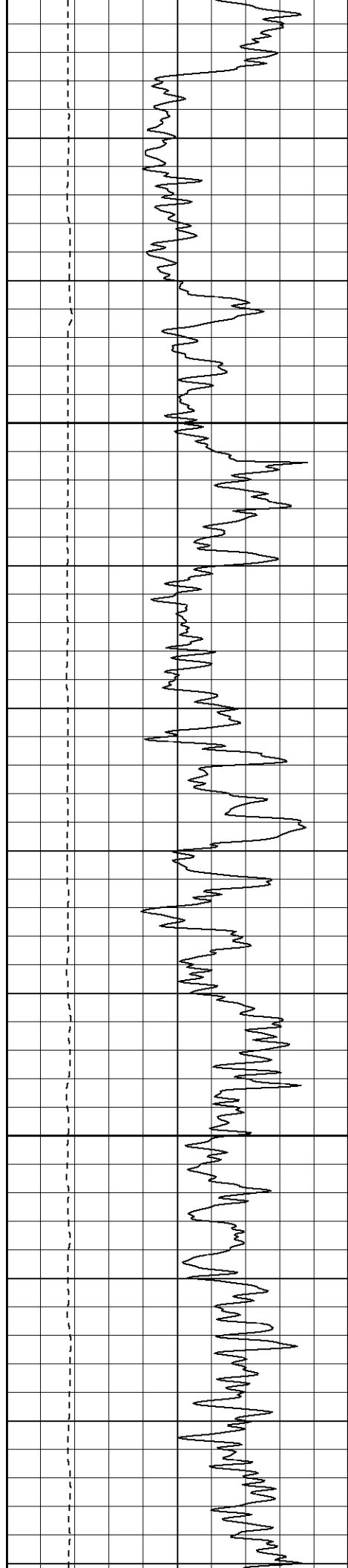




2250

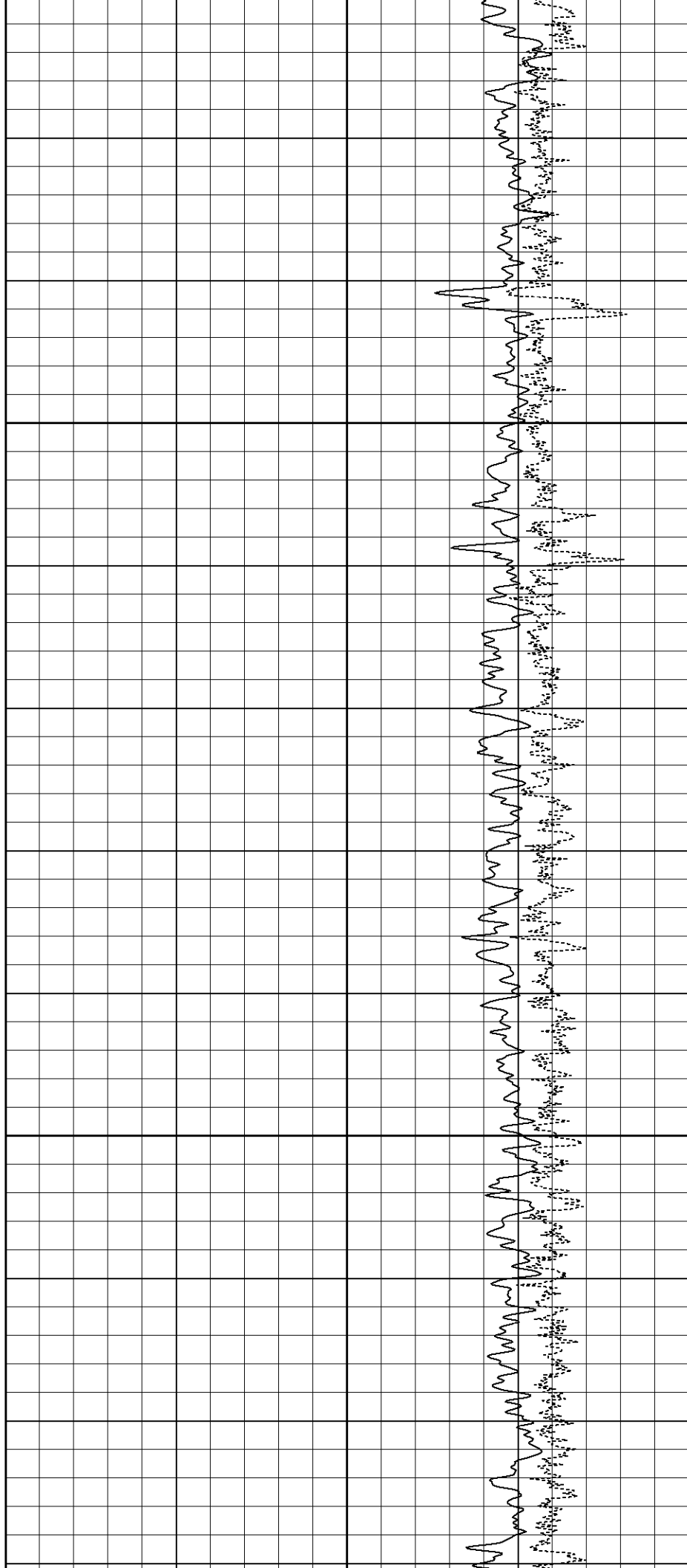


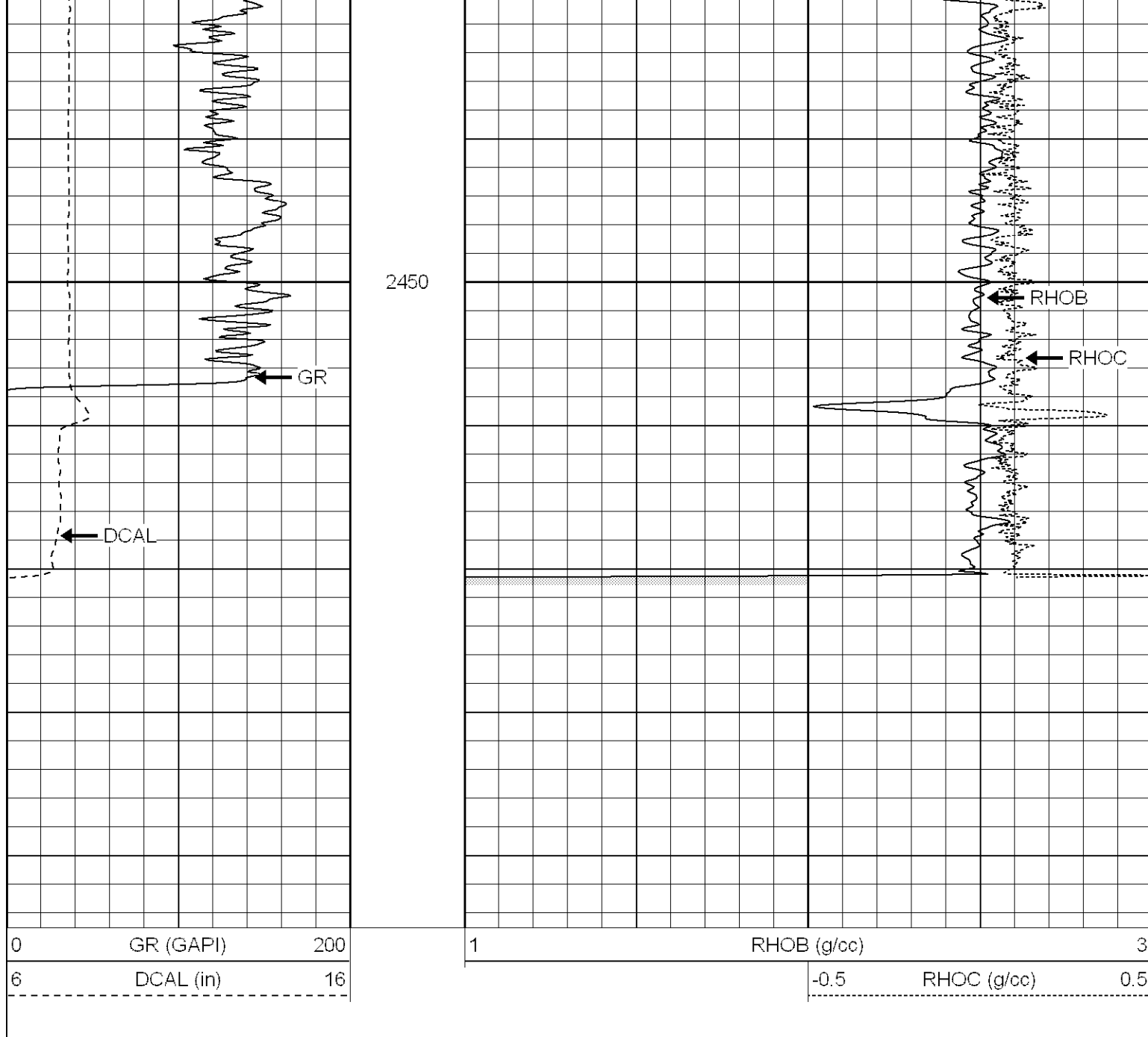
2300



2350

2400





Dual Induction Calibration Report

Serial-Model: 5375-G
 Surface Cal Performed: Sat Jul 29 15:03:01 2006
 Downhole Cal Performed: Mon Jul 31 11:03:57 2006

Surface Calibration

Readings				References			Results	
Loop:	Air	Loop		Air	Loop		m	b
Deep	0.020	0.626	V	0.000	500.000	mmho-m	825.140	-16.503
Medium	0.010	0.749	V	0.000	550.000	mmho-m	744.284	-7.677
Internal:	Zero	Cal		Zero	Cal		m	b
Deep	0.007	0.626	V	0.000	500.000	mmho-m	808.280	-5.935
Medium	0.010	0.749	V	0.000	550.000	mmho-m	744.155	-7.535

Downhole Calibration

Internal:	Readings			References			Results	
	Zero	Cal		Zero	Cal		m	b
Deep	-0.286	500.148	mmho-m	-0.118	499.985	mmho-m	0.999	0.168
Medium	-0.377	549.918	mmho-m	-0.141	549.955	mmho-m	1.000	0.236
Shallow	2.509	0.018	V	500.000	2.000	Ohm-m	149.883	-4.800

Compensated Density Calibration Report

Serial-Model: 902-2.75POH
Source / Verifier: /
Master Calibration Performed: Mon Jul 24 12:29:01 2006

Master Calibration

	Density		Far Detector	Near Detector	
Magnesium	1.710	g/cc	1017.78	494.16	cps
Aluminum	2.590	g/cc	182.34	245.43	cps
Spine Angle = 67.95			Density/Spine Ratio = 0.474		

