

Patterson

**SINGLE
INDUCTION
LOG**

Company **Pioneer Natural Resources**
Well **Settler 12-3**
Field **Purgatorie River**
County **Las Animas** State **Colorado**

Location: API # : 05 071 08166 00
2108 FNL & 112' FWL
SEC 3 TWP 35S RGE 65W
Permanent Datum Ground Level Elevation 7344'
Log Measured From Kelly Bushing 4' Above G.L.
Drilling Measured From Kelly Bushing
Other Services
CDL
NEUTRON
Elevation
K.B. 7348'
D.F. -----
G.L. 7344'

Company **Pioneer Natural Resources**
Well **Settler 12-3**
Field **Purgatorie River**
County **Las Animas**
State **Colorado**

Date	12-10-04	
Run Number	One	
Depth Driller	1615'	
Depth Logger	1621'	
Bottom Logged Interval	1619'	
Top Log Interval	Surface Casing	
Casing Driller	8 5/8" @ 254'	
Casing Logger	254'	
Bit Size	7 7/8"	
Type Fluid in Hole	Water	
Density / Viscosity	//	
pH / Fluid Loss	//	
Source of Sample	//	
Rm @ Meas. Temp	//	
Rmft @ Meas. Temp	//	
Rmc @ Meas. Temp	//	
Source of Rmft / Rmc	//	
Rm @ BHT	//	
Time Circulation Stopped	8:30 a.m.	
Time Logger on Bottom	10:45 a.m.	
Maximum Recorded Temperature	104 DEG F	
Equipment Number	T632	
Location	Trinidad	
Recorded By	M. Norton	
Witnessed By	Mr. Tom Beardslee	

<<< Fold Here >>>

All interpretations are opinions based on inferences from electrical or other measurements and we cannot and do not guarantee the accuracy or correctness of any interpretation, and we shall not, except in the case of gross or willful negligence on our part, be liable or responsible for any loss, costs, damages, or expenses incurred or sustained by anyone resulting from any interpretation made by any of our officers, agents or employees. These interpretations are also subject to our general terms and conditions set out in our current Price Schedule.

Comments

Well Directions:
Longs Canyon Left Before Fourth Gate Thru The Coach, Then Thru The Rock Hopper
Top Of The Hill Stay Right Dead End On Location.

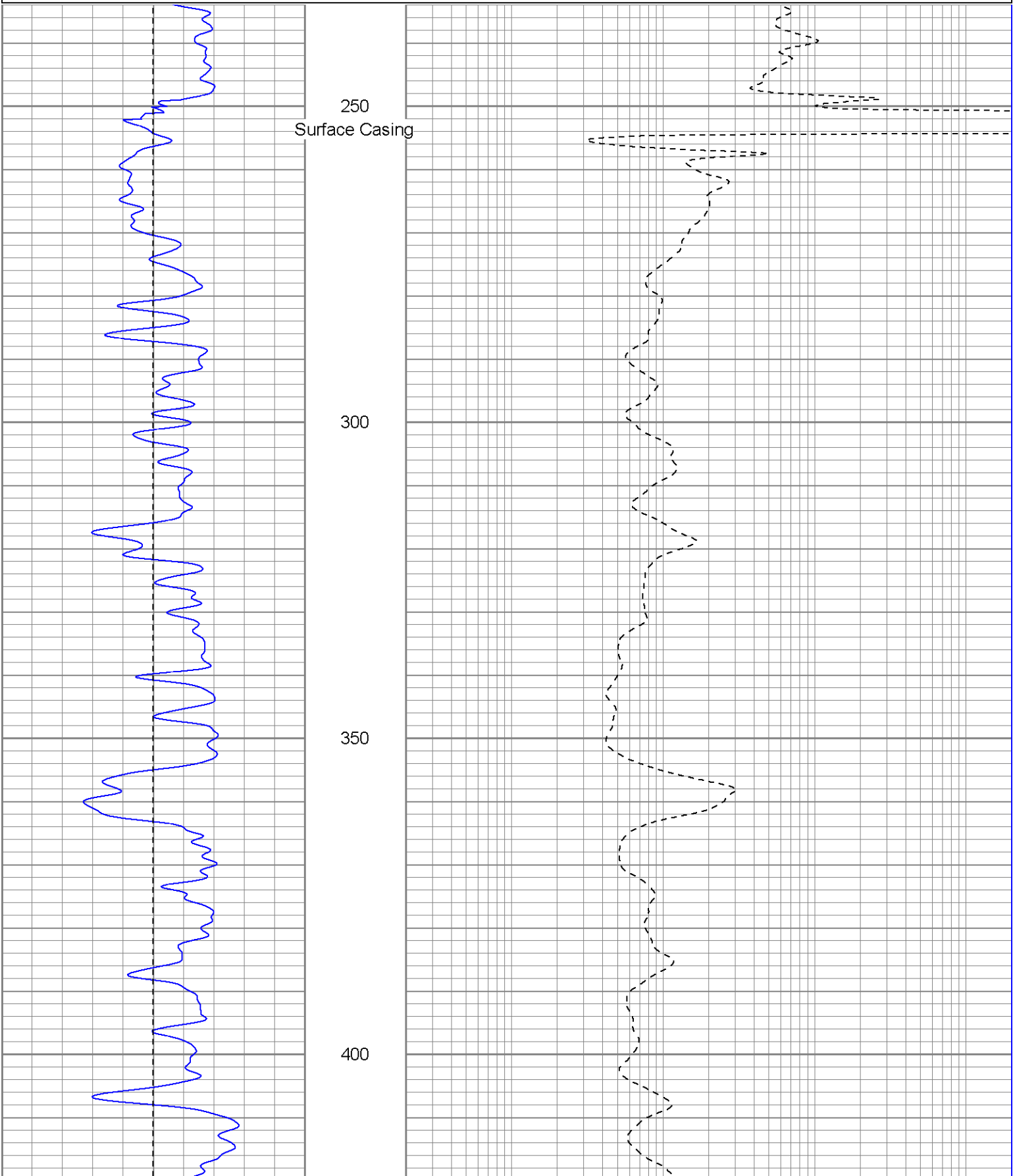
Patterson

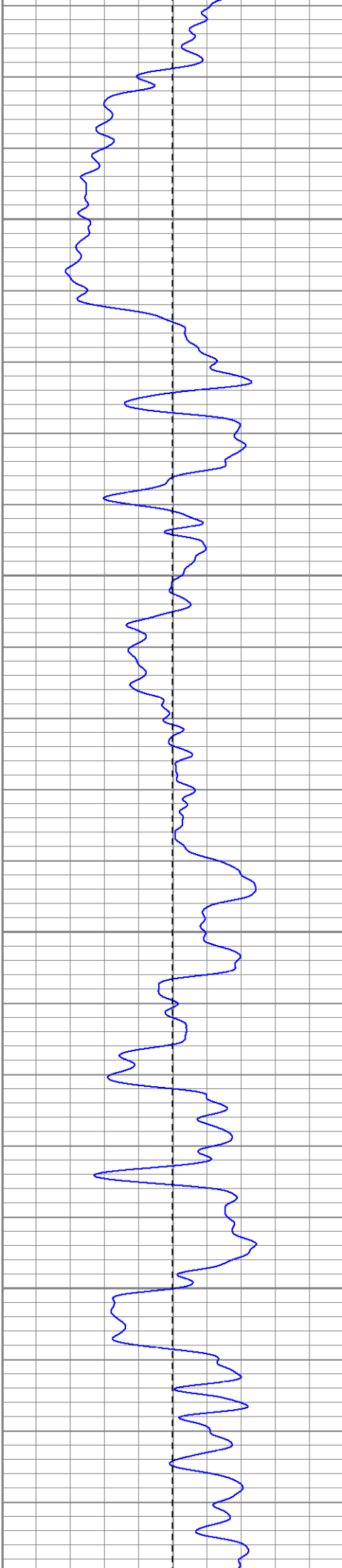
Main Pass

Database File: settler.db
Dataset Pathname: pass1.1
Presentation Format: iel
Dataset Creation: Fri Dec 10 11:40:59 2004 by Calc Warrior 7.0 STD Ope
Charted by: Depth in Feet scaled 1:240

0	GR (GAPI)	200
-100	SP (mV)	100

0.2	DIR (Ohm-m)	2000
0.2	SN (Ohm-m)	2000



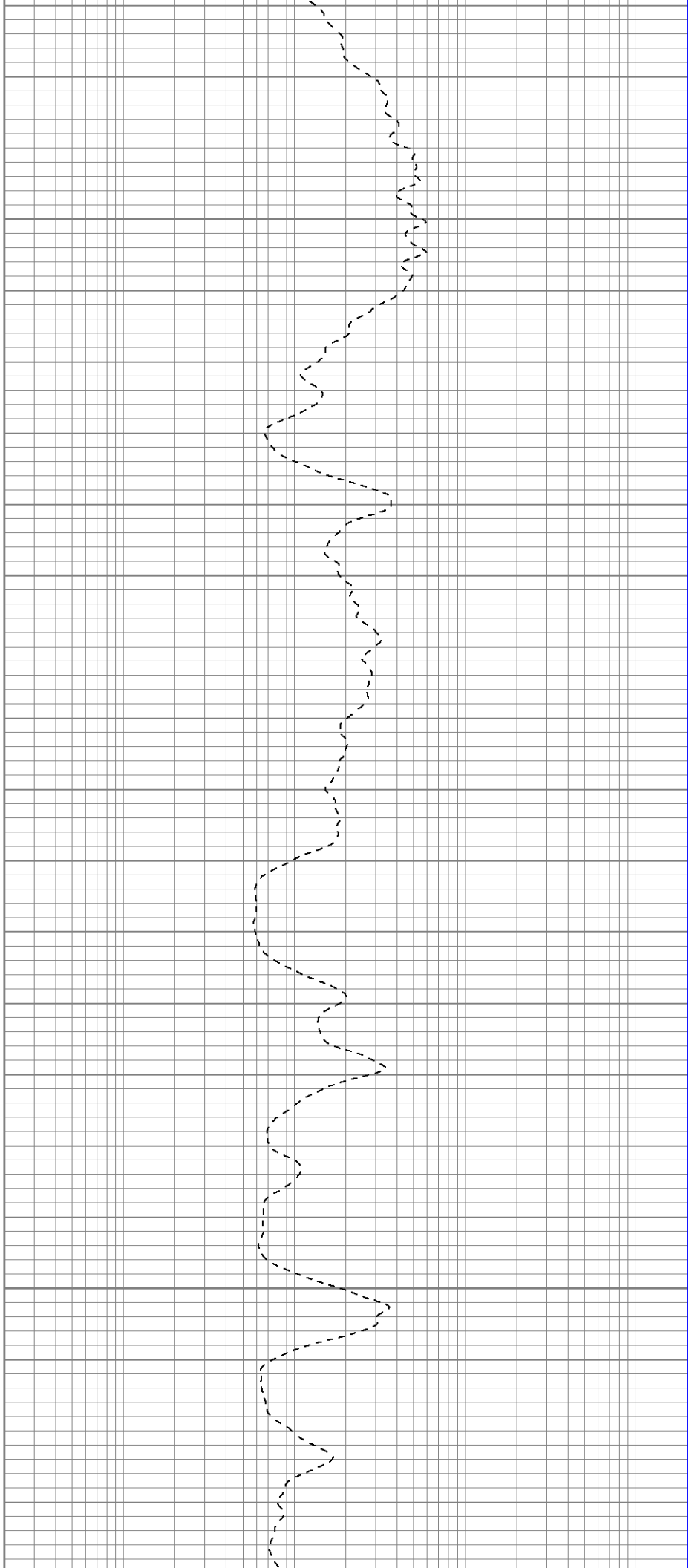


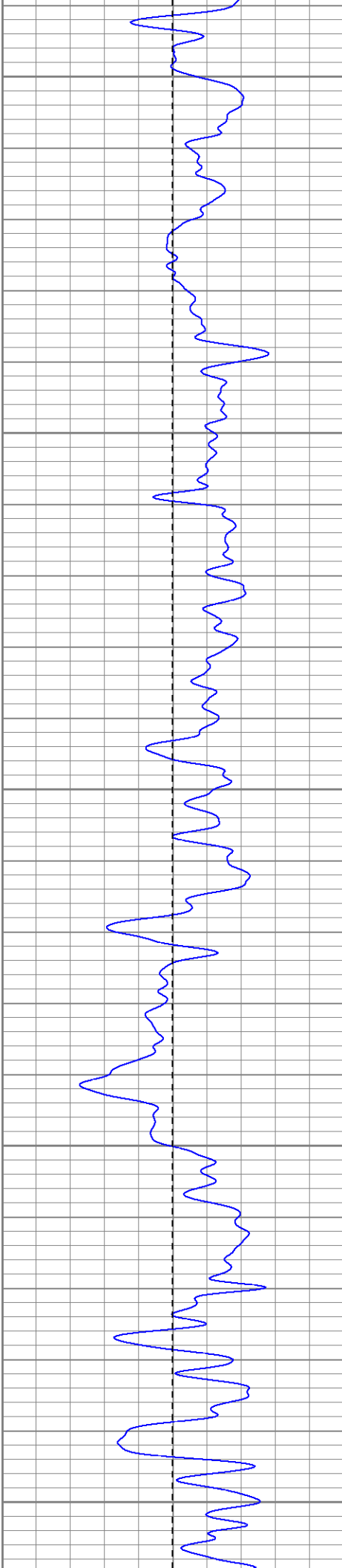
450

500

550

600





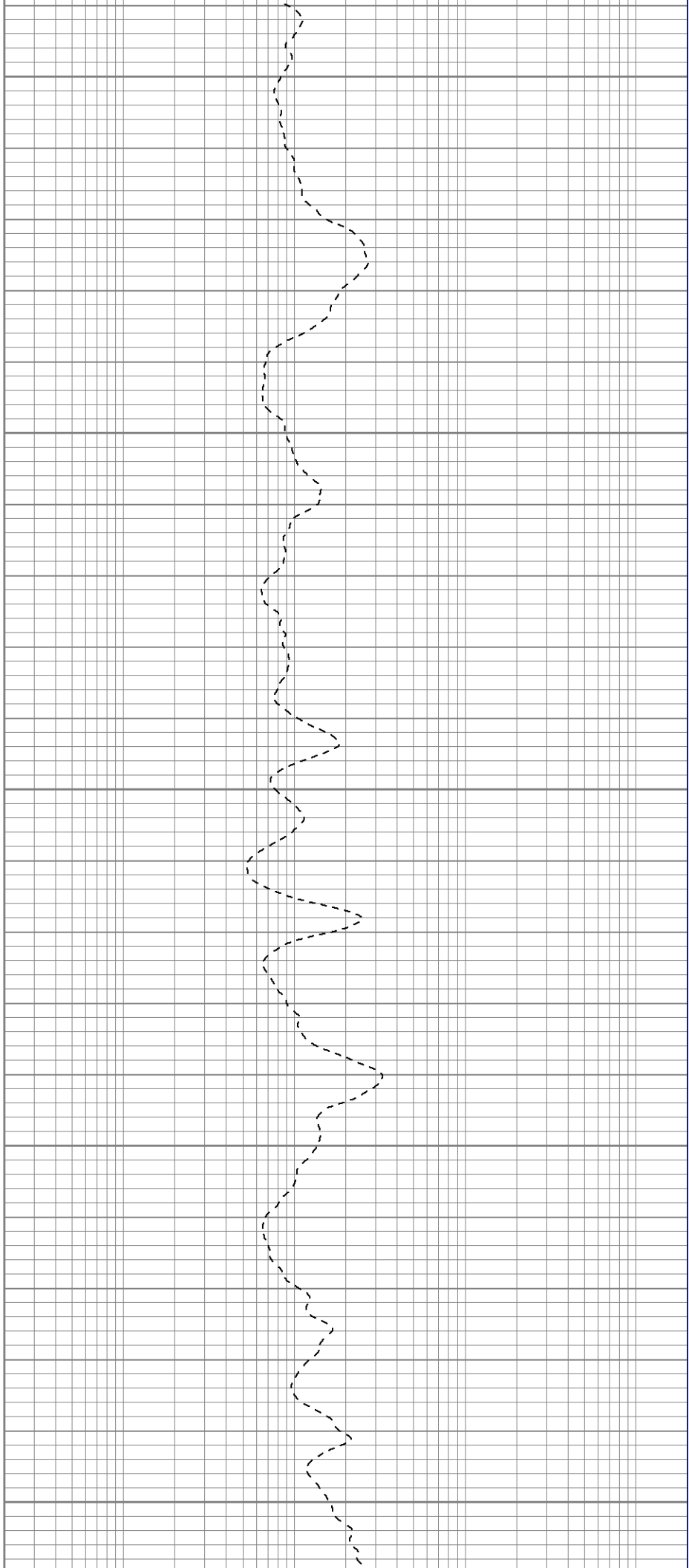
650

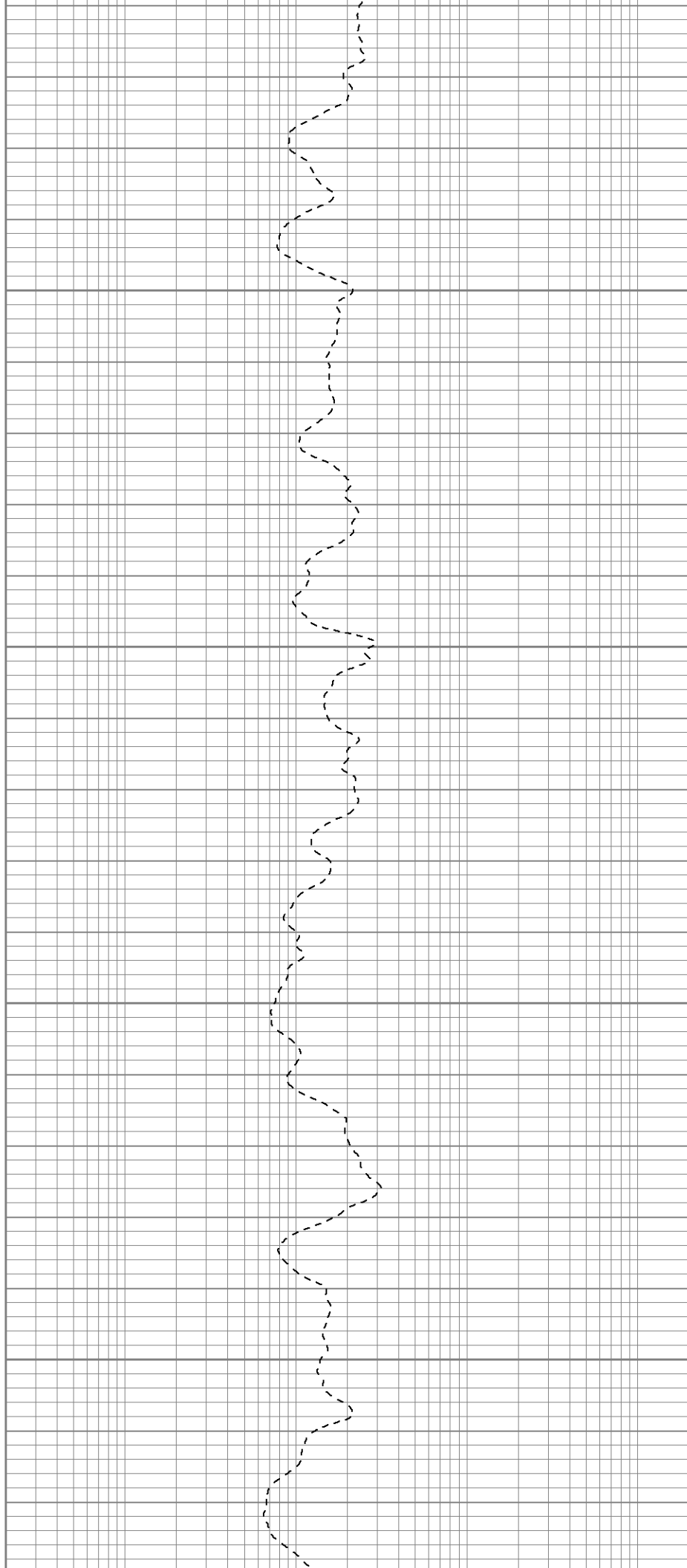
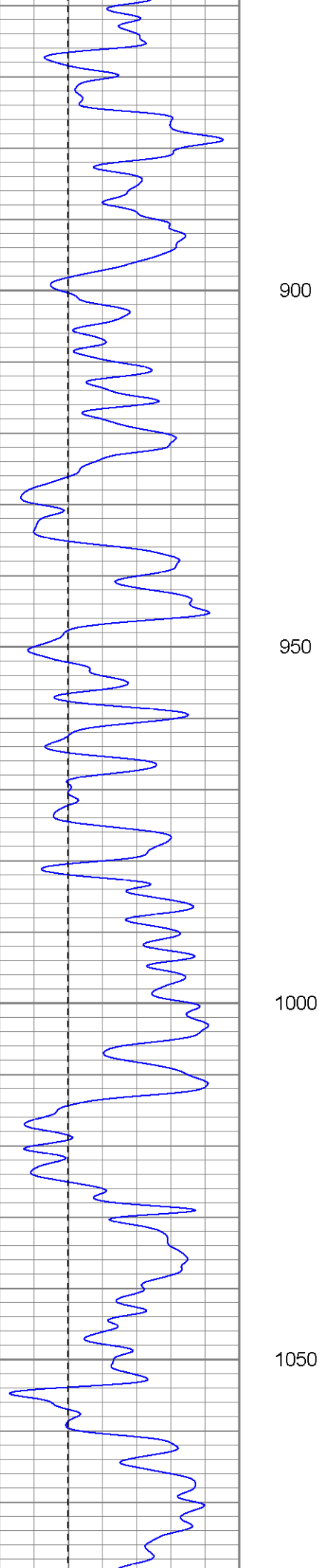
700

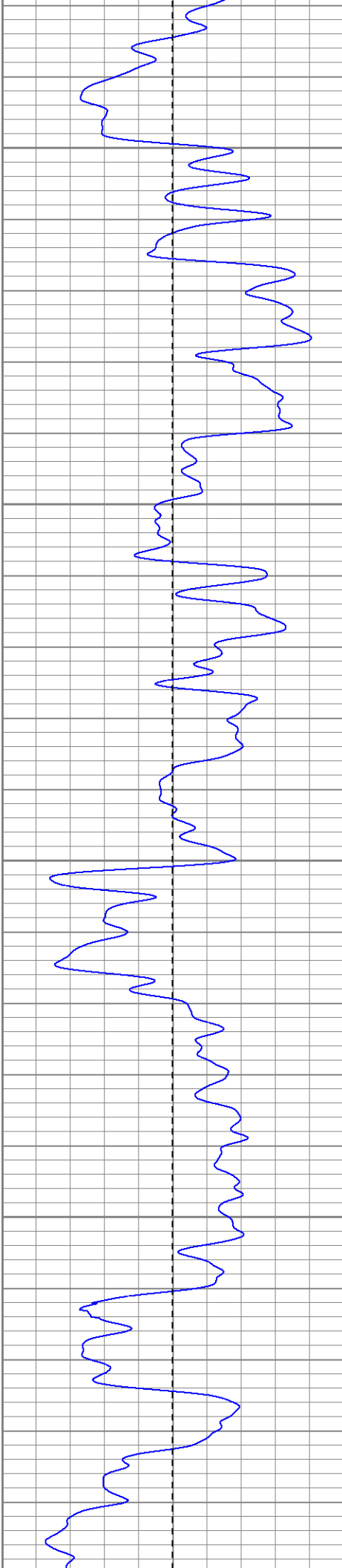
750

800

850







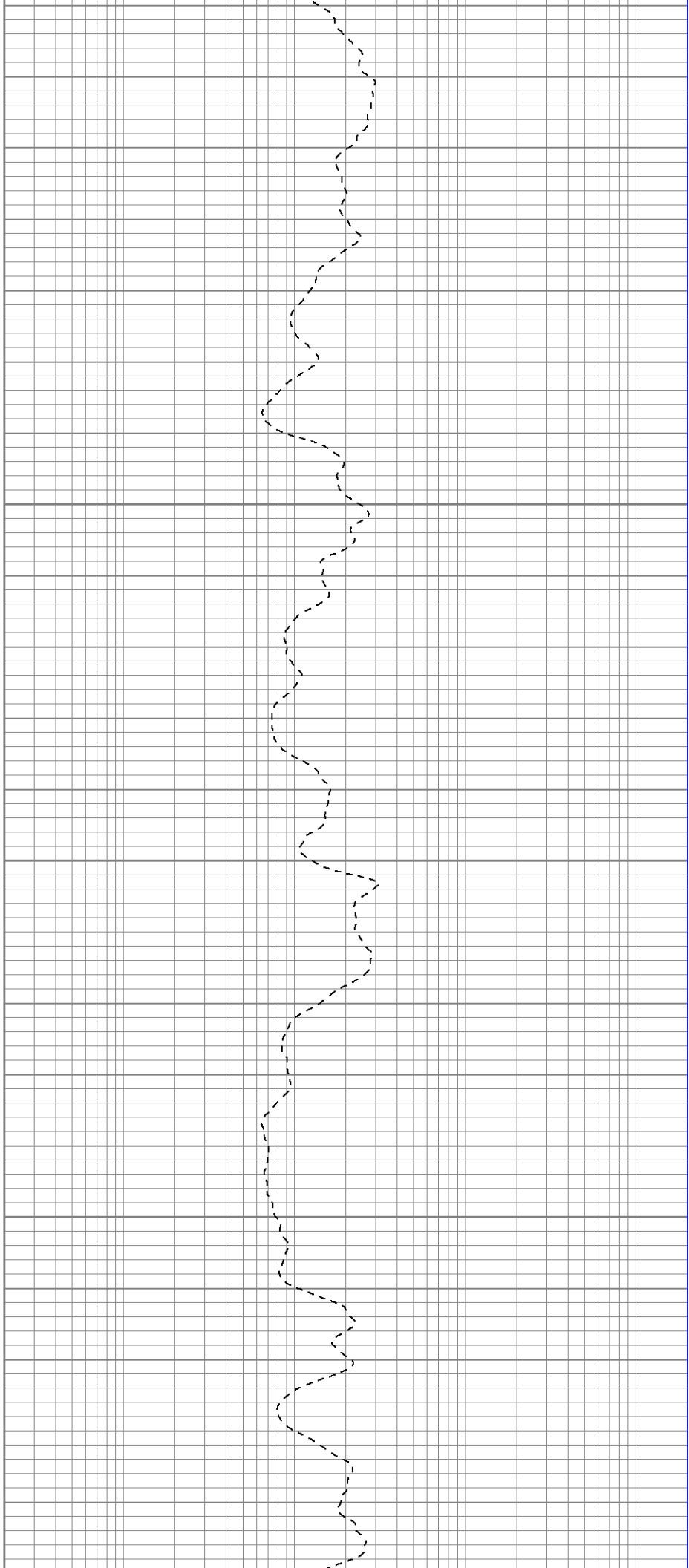
1100

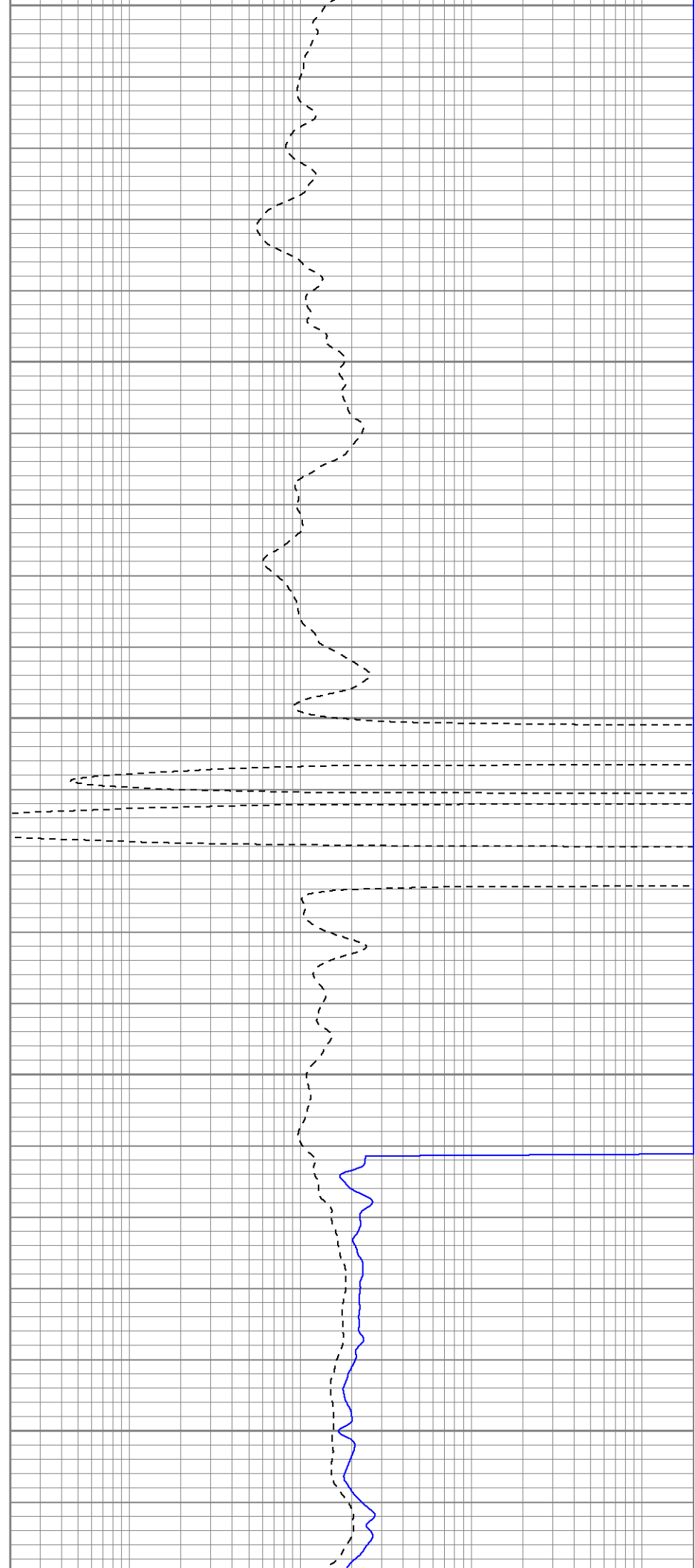
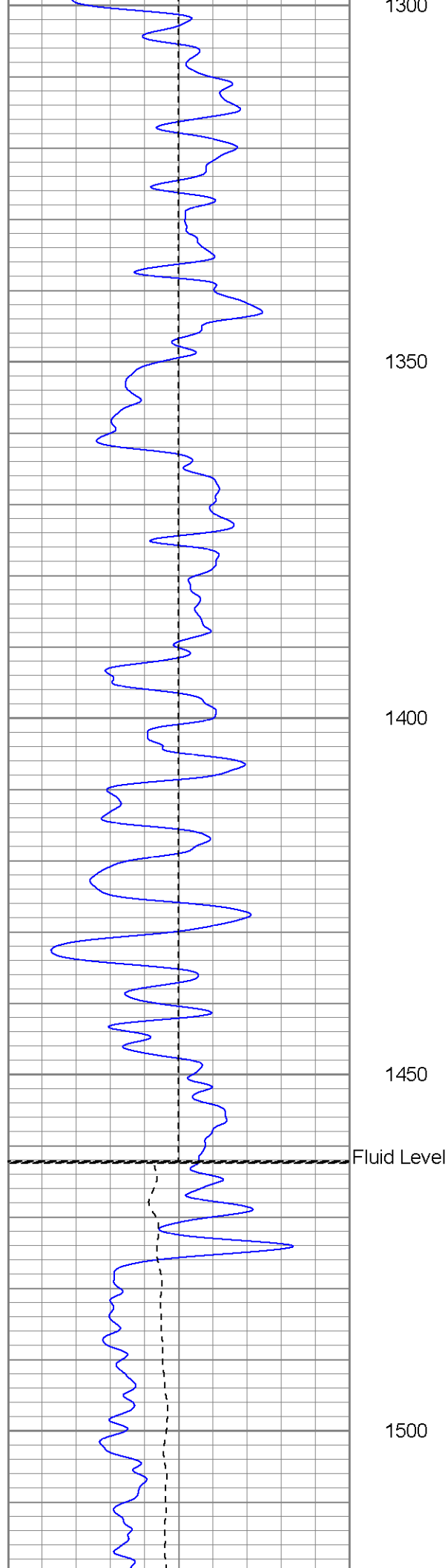
1150

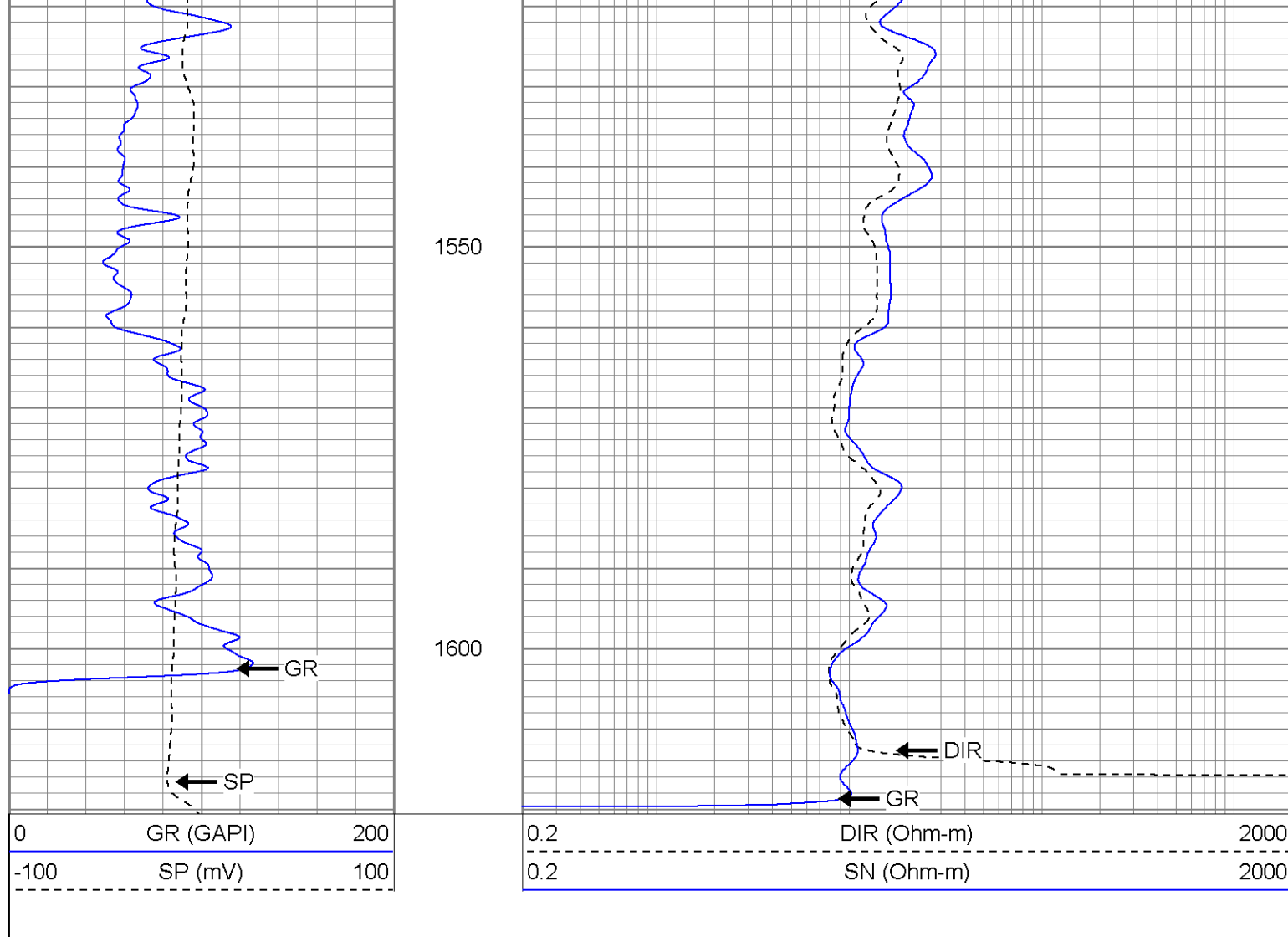
1200

1250

1300







Induction Tool Calibration Report

Serial Number: 9007
 Tool Model: G
 Downhole Cal Performed: Thu Dec 09 09:55:55 2004
 Surface Cal Performed: Thu Dec 09 09:54:25 2004

Surface Calibration:	Air	Loop	
Conductivity Reference:	0.000	550.000	mmho
Conductivity Reading:	-0.008	0.690	V
Internal Reference:	Zero	Cal	
Conductivity Reference:	0.000	500.000	mmho
Conductivity Reading:	0.004	0.692	V


Downhole Calibration:	Internal Zero	Internal Cal	
Conductivity Reference:	-2.651	551.500	mmho
Conductivity Reading:	6.663	525.624	V
Short Normal Reference:	0.000	17.000	Ohm-m
Short Normal Reading:	0.011	0.209	V

Results:	Gain	Offset
Loop Conductivity:	787.871	6.078
Downhole Correction:	1.059	-3.458
Short Normal Resistivity:	79.000	-4.000

Gamma Ray Calibration Report

Serial Number: 2000
 Tool Model: PROBE

Performed:	Thu Dec 09 09:54:11 2004	
Calibrator Value:	200.0	GAPI
Background Reading:	80.0	cps
Calibrator Reading:	255.0	cps
Sensitivity:	0.2600	GAPI/cps

Sensor	Offset (ft)	Schematic	Description	Len (ft)	OD (in)	Wt (lb)
GR	16.75		GR-PROBE (2000)	3.58	3.25	40.00
DIC	6.89		IEL-G (9007)	15.25	4.00	178.00
SP SN	1.50 1.00					
		Dataset:	/field/well/run1/_plots/_jobs_/sil			
		Total Length:	18.83 ft			
		Total Weight:	218.00 lb			
		O.D.	4.00 in			