

Patterson

**CEMENT BOND
GAMMA RAY**

Company XTO Energy Inc.
Well Apache Canyon 13-6
Field Purgatorie River
County Las Animas
State CO

Company XTO Energy Inc.
Well Apache Canyon 13-6
Field Purgatorie River
County Las Animas State CO

Location:		API # : 05 017 08481		Other Services
2063' FNL & 1456' FWL				
SEC 13 TWP 34S RGE 68W				
Permanent Datum	Ground Level	Elevation	8190'	
Log Measured From	Ground Level			
Drilling Measured From	Ground Level			
		Elevation	K.B. 8190' D.F. 8190' G.L. 8190'	

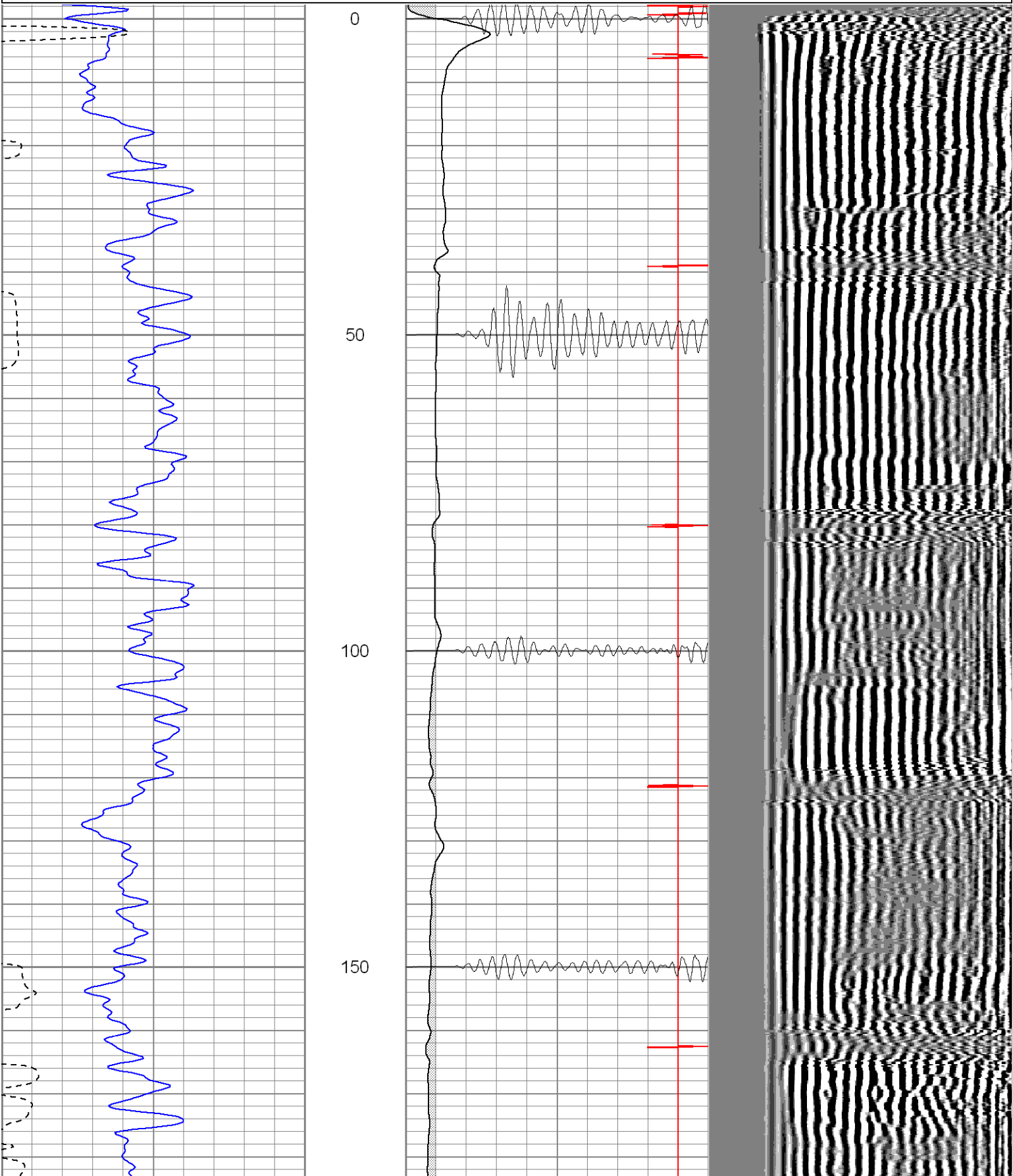
Date	2/16/06						
Run Number	three						
Depth Driller	2340'						
Depth Logger	768'						
Bottom Logged Interval	764'						
Top Log Interval							
Open Hole Size	7 7/8"						
Type Fluid	water						
Density / Viscosity	///						
Max. Recorded Temp.	///						
Estimated Cement Top	Surf.						
Time Well Ready	8:05						
Time Logger on Bottom	8:10						
Equipment Number	T244						
Location	Trinidad						
Recorded By	Worley						
Witnessed By	Mr. Polley						
Borehole Record					Tubing Record		
Run Number	Bit	From	To	Size	Weight	From	To
Casing Record	Size		Wgt/Ft		Top	Bottom	
Surface String	8 5/8"				00	205'	
Prot. String							
Production String	5 1/2"				00	NA	
Liner							

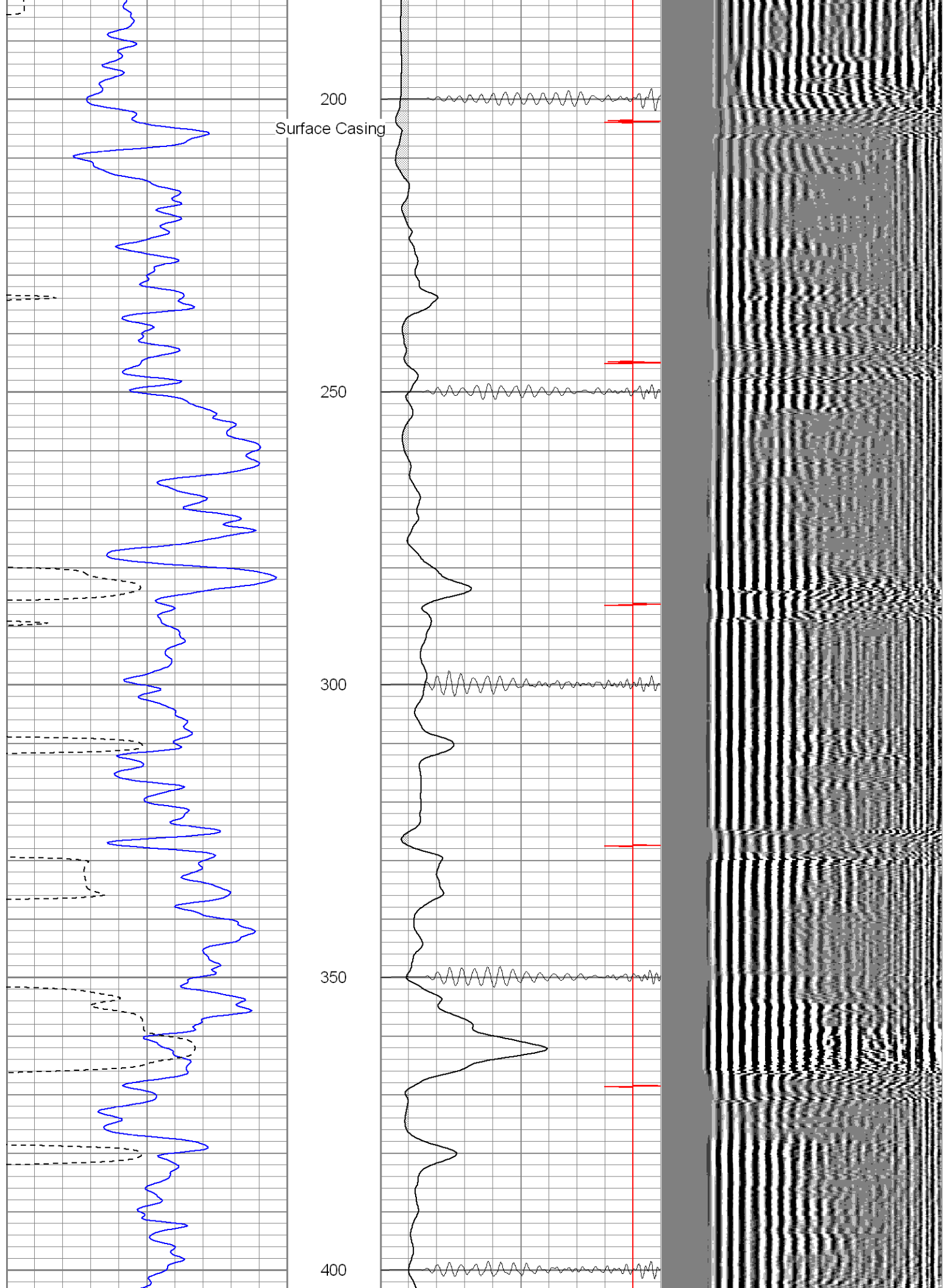
<<< Fold Here >>>

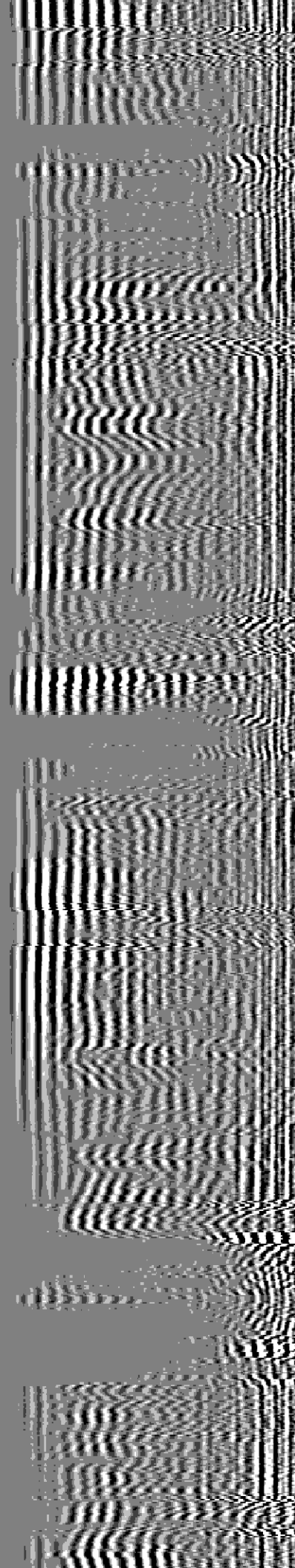
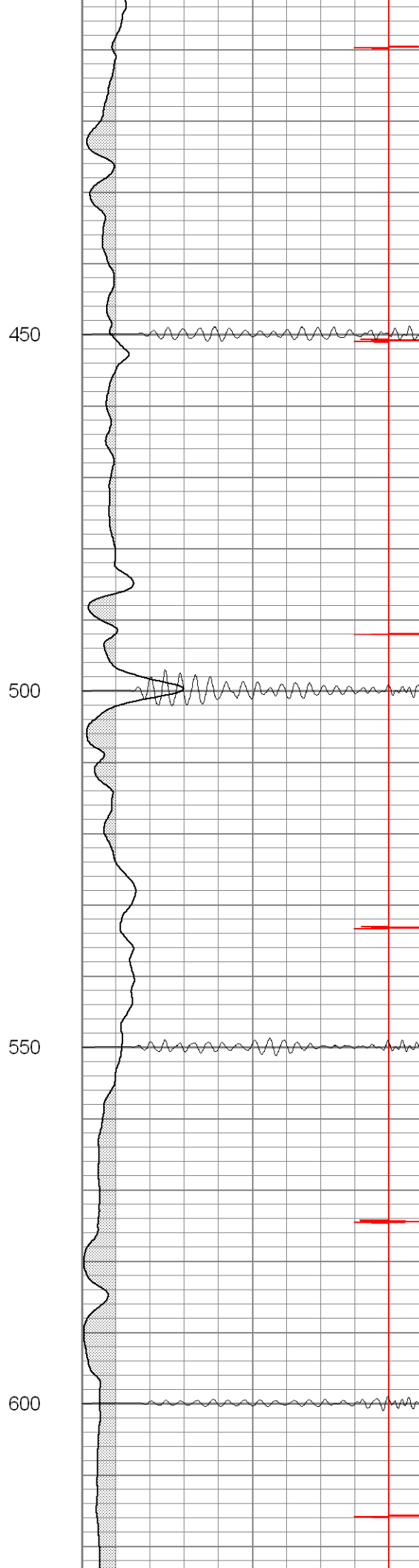
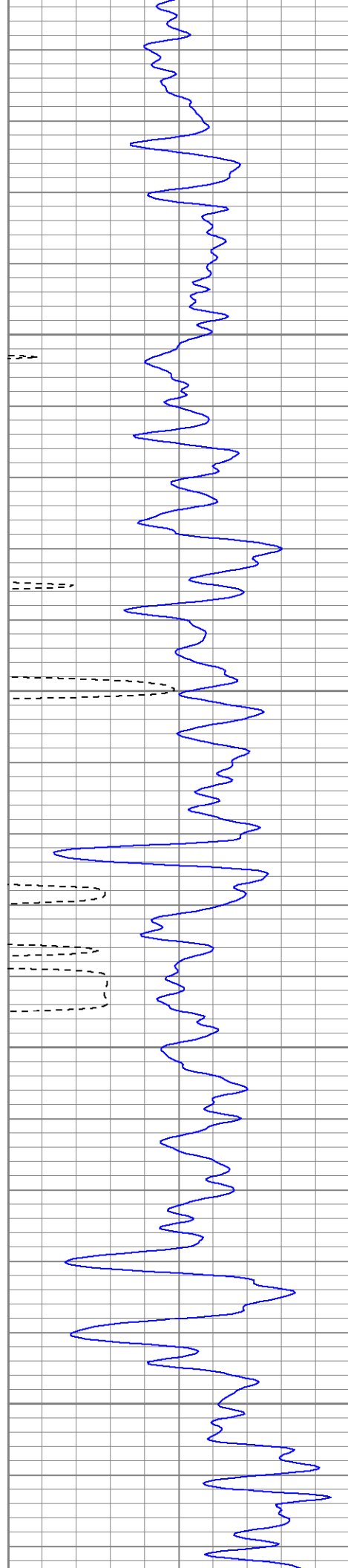
All interpretations are opinions based on inferences from electrical or other measurements and we cannot and do not guarantee the accuracy or correctness of any interpretation, and we shall not, except in the case of gross or willful negligence on our part, be liable or responsible for any loss, costs, damages, or

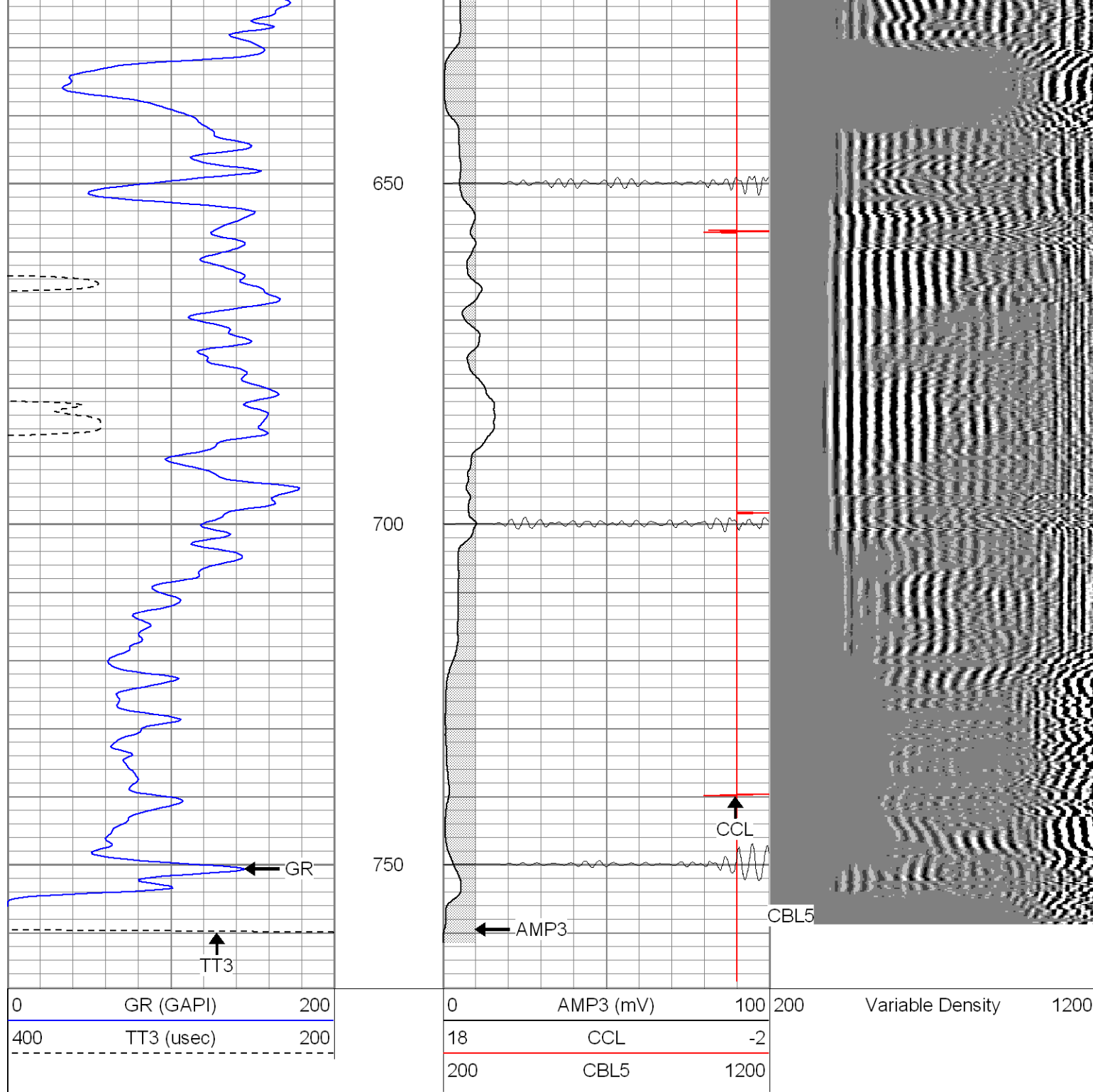
Database File: ac13-6b21606.db
Dataset Pathname: pass2
Presentation Format: cblrt
Dataset Creation: Thu Feb 16 08:18:10 2006 by Log Warrior 7.0 STD Cas
Charted by: Depth in Feet scaled 1:240

0	GR (GAPI)	200	0	AMP3 (mV)	100	200	Variable Density	1200
400	TT3 (usec)	200	18	CCL	-2			
			200	CBL5	1200			





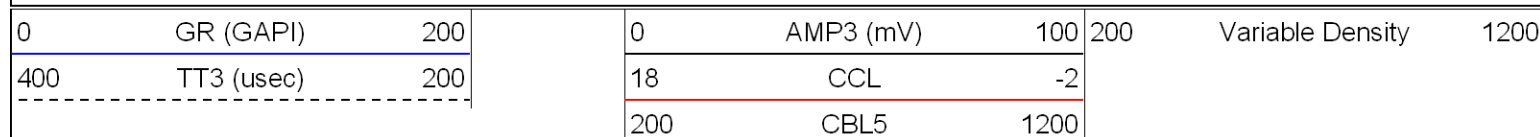


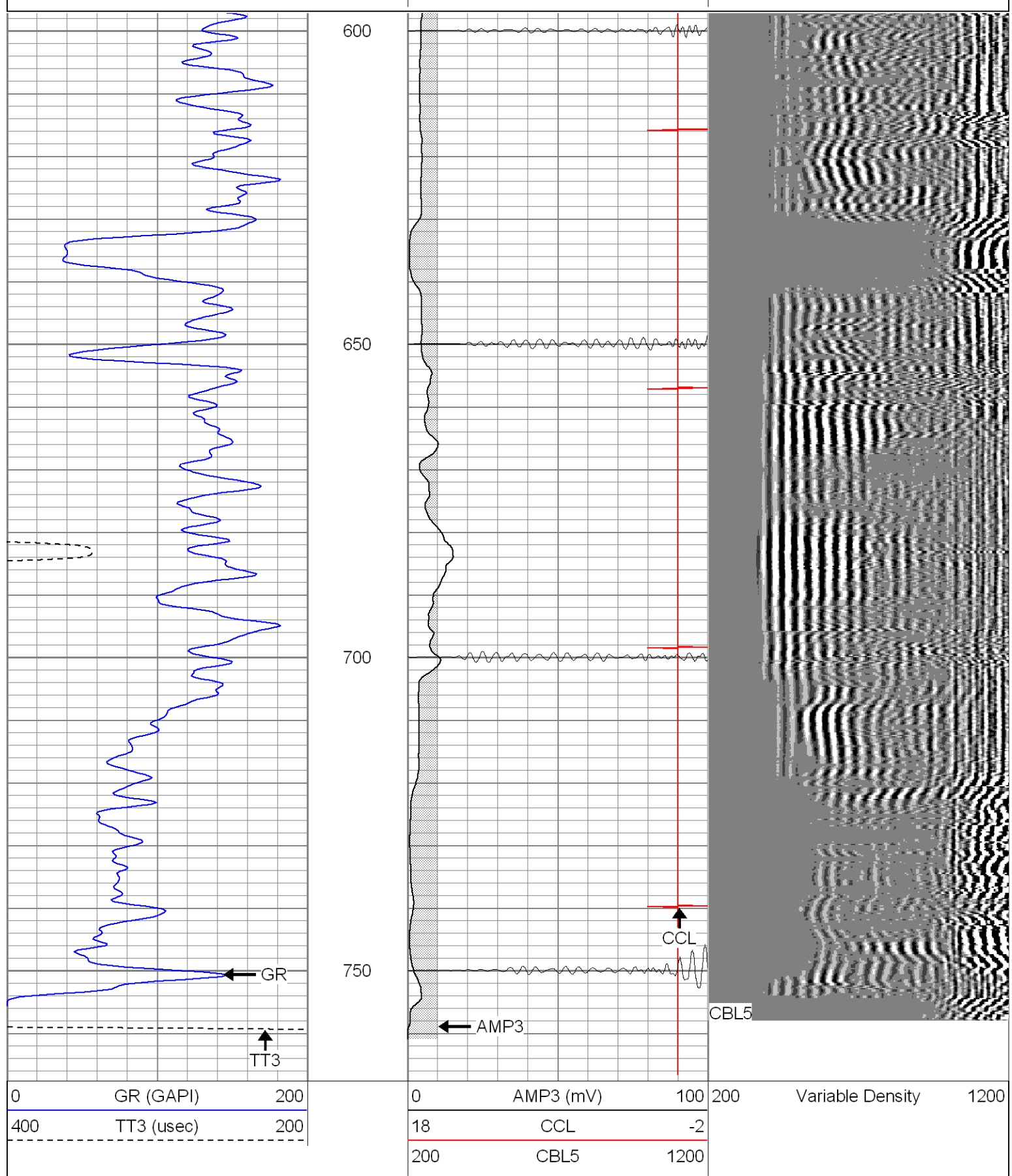


Patterson

Repeat Section

Database File: ac13-6b21606.db
 Dataset Pathname: pass1
 Presentation Format: cblrt
 Dataset Creation: Thu Feb 16 08:12:07 2006 by Log Warrior 7.0 STD Cas
 Charted by: Depth in Feet scaled 1:240





Cement Bond Log Calibration Report

Serial Number: Titan5
Tool Model: 2
Performed: Wed Feb 15 13:17:34 2006

Depth: 2158.27 ft
Casing Diameter: 5.5 in

Casing Diameter:

3.0

in

3' Spacing

5' Spacing

Signal Zero:

0

0

mV

Calibrated Amplitude:

85

85

mV

Reading at Signal Zero:

0

0

V

Reading in Free Pipe:

1.4

1.5

V

Gain:

60.7143

56.6667

Offset:

0

0

Gamma Ray Calibration Report

Serial Number:

Titan5

Tool Model:

T2

Performed:

Mon Jan 30 08:59:20 2006

Calibrator Value:

1.0

GAPI

Background Reading:

0.0

cps

Calibrator Reading:

1.0

cps

Sensitivity:

1.2000

GAPI/cps