

**Patterson**

**DUAL  
INDUCTION  
LOG**

Company XTO Energy Inc.		Company XTO Energy Inc.	
Well Apache Canyon 24-04		Well Apache Canyon 24-04	
Field Purgatoire River		Field Purgatoire River	
County Las Animas		County Las Animas	
State Colorado		State Colorado	
Location: API # : 05 071 08687 00		Other Services cdl neutron	
SEC 24 TWP 34S RGE 68W		Elevation	
Permanent Datum	Ground Level	Elevation	8004'
Log Measured From	Ground Level	K.B. -----	
Drilling Measured From	Ground Level	D.F. -----	
		G.L. 8004'	
Date	02-17-06		
Run Number	One		
Depth Driller	2220'		
Depth Logger	2183'		
Bottom Logged Interval	2181'		
Top Log Interval	Surface Casing		
Casing Driller	8 5/8" @ 228'		
Casing Logger	228'		
Bit Size	7 7/8"		
Type Fluid in Hole	Water		
Density / Viscosity	///		
pH / Fluid Loss	///		
Source of Sample	///		
Rm @ Meas. Temp	///		
Rmf @ Meas. Temp	///		
Rmc @ Meas. Temp	///		
Source of Rmf / Rmc	///		
Rm @ BHT	///		
Time Circulation Stopped	7:30 a.m.		
Time Logger on Bottom	10:30 a.m.		
Maximum Recorded Temperature	100		
Equipment Number	T677		
Location	Trinidad		
Recorded By	L. Smith		
Witnessed By	Mr. Don Johnson		

>>> Fold Here >>>

All interpretations are opinions based on inferences from electrical or other measurements and we cannot and do not guarantee the accuracy or correctness of any interpretation, and we shall not, except in the case of gross or willful negligence on our part, be liable or responsible for any loss, costs, damages, or expenses incurred or sustained by anyone resulting from any interpretation made by any of our officers, agents or employees. These interpretations are also subject to our general terms and conditions set out in our current Price Schedule.

**Comments**

Up Big Bingham to Y stay left thru gate, stay on main rd 3.4 miles to Y, stay right to location, left fork goes down a hill.

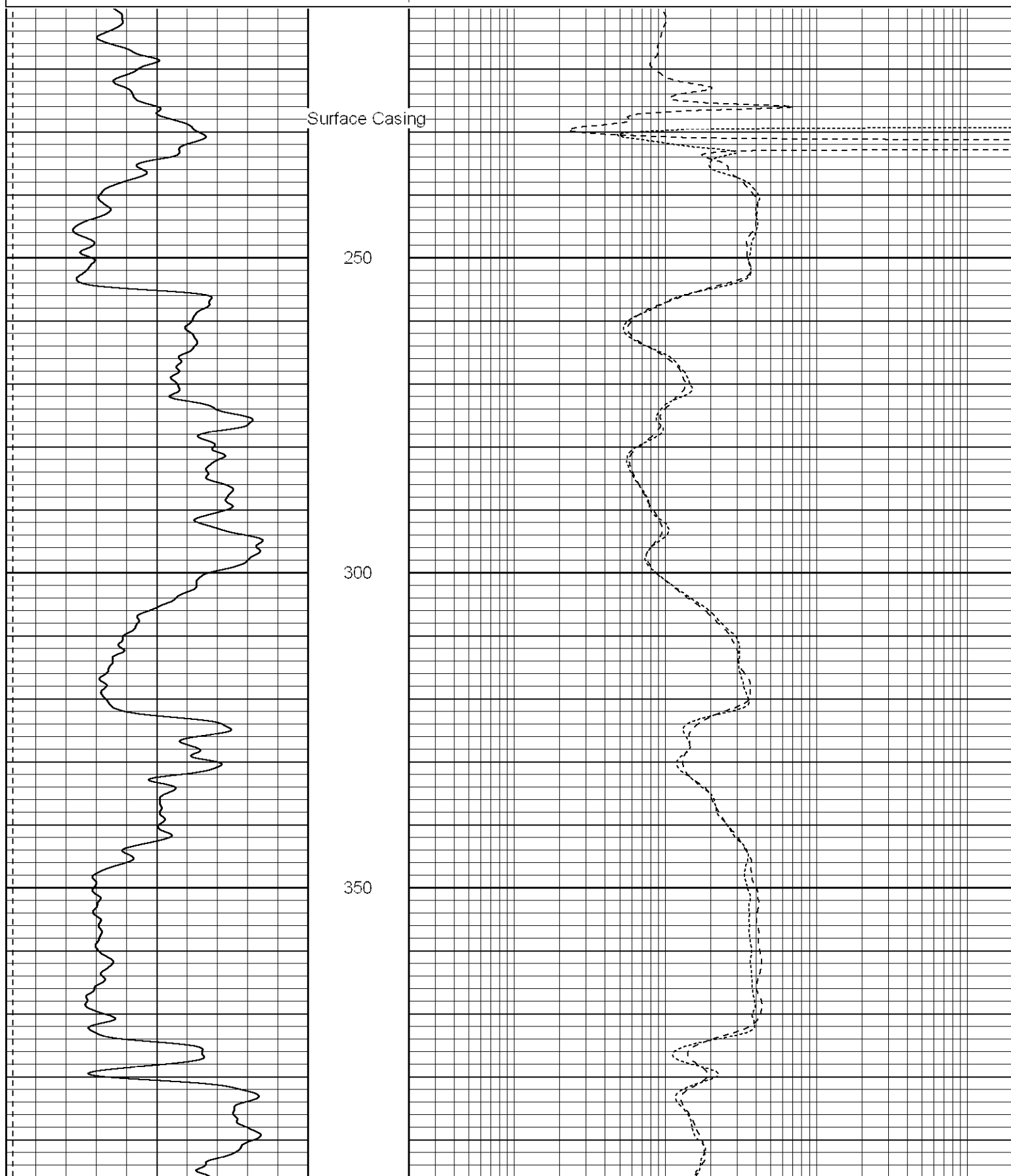
**Patterson**

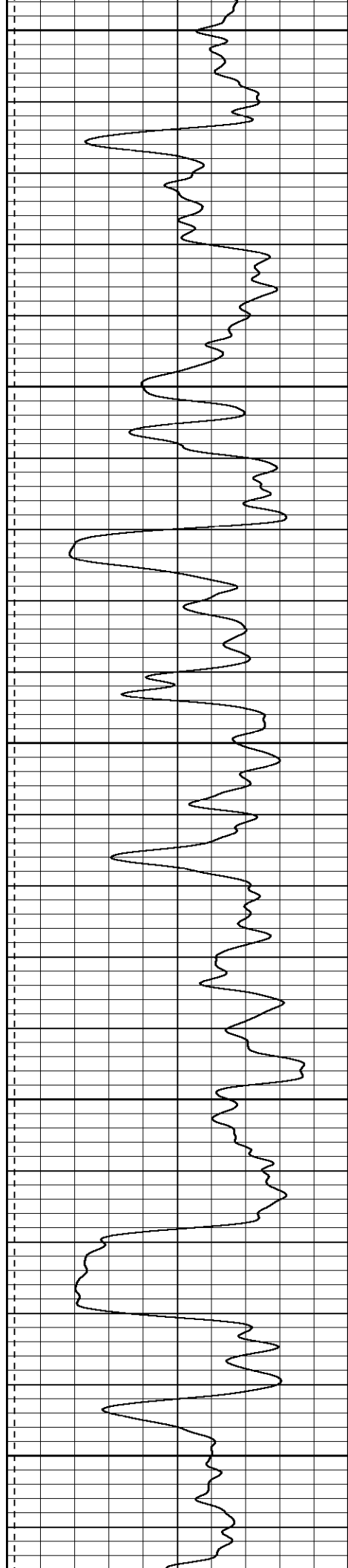
**Main Pass**

Database File: xtoac2404.db  
Dataset Pathname: pass2.2  
Presentation Format: dil  
Dataset Creation: Fri Feb 17 12:19:28 2006 by Calc Warrior 7.0 STD Ope  
Charted by: Depth in Feet scaled 1:240

0	GR (GAPI)	200
-200	SP (mV)	0

0.2	RILD (Ohm-m)	2000
0.2	RILM (Ohm-m)	2000
0.2	RLL3 (Ohm-m)	2000





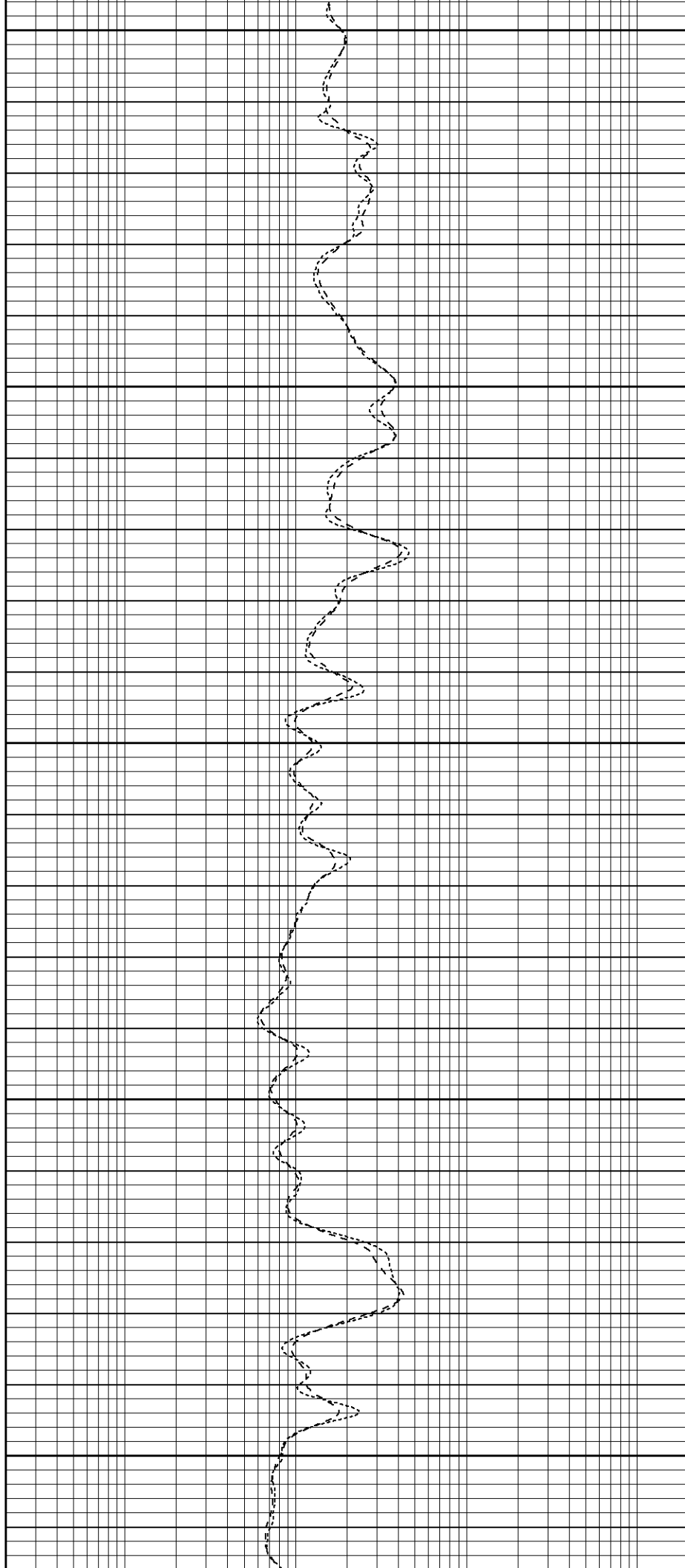
400

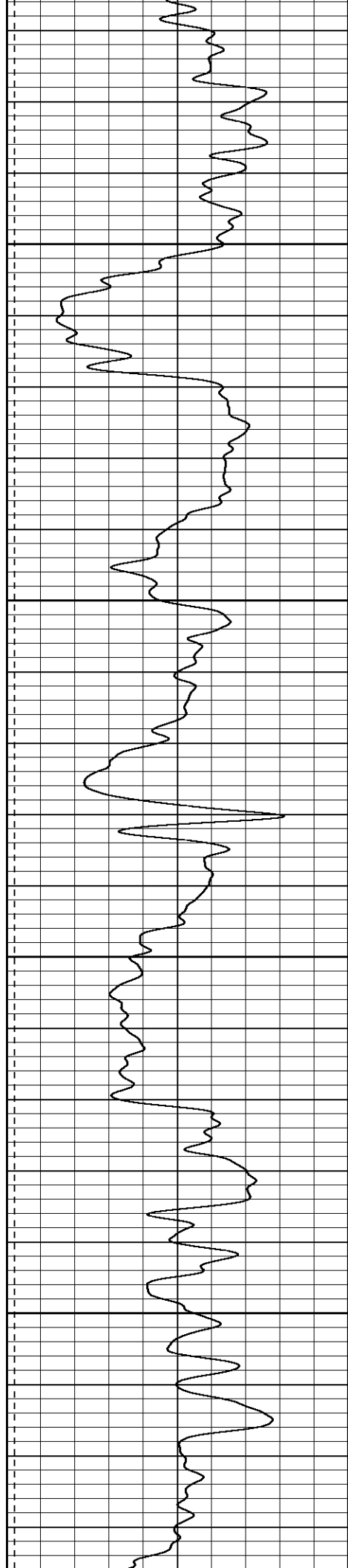
450

500

550

600



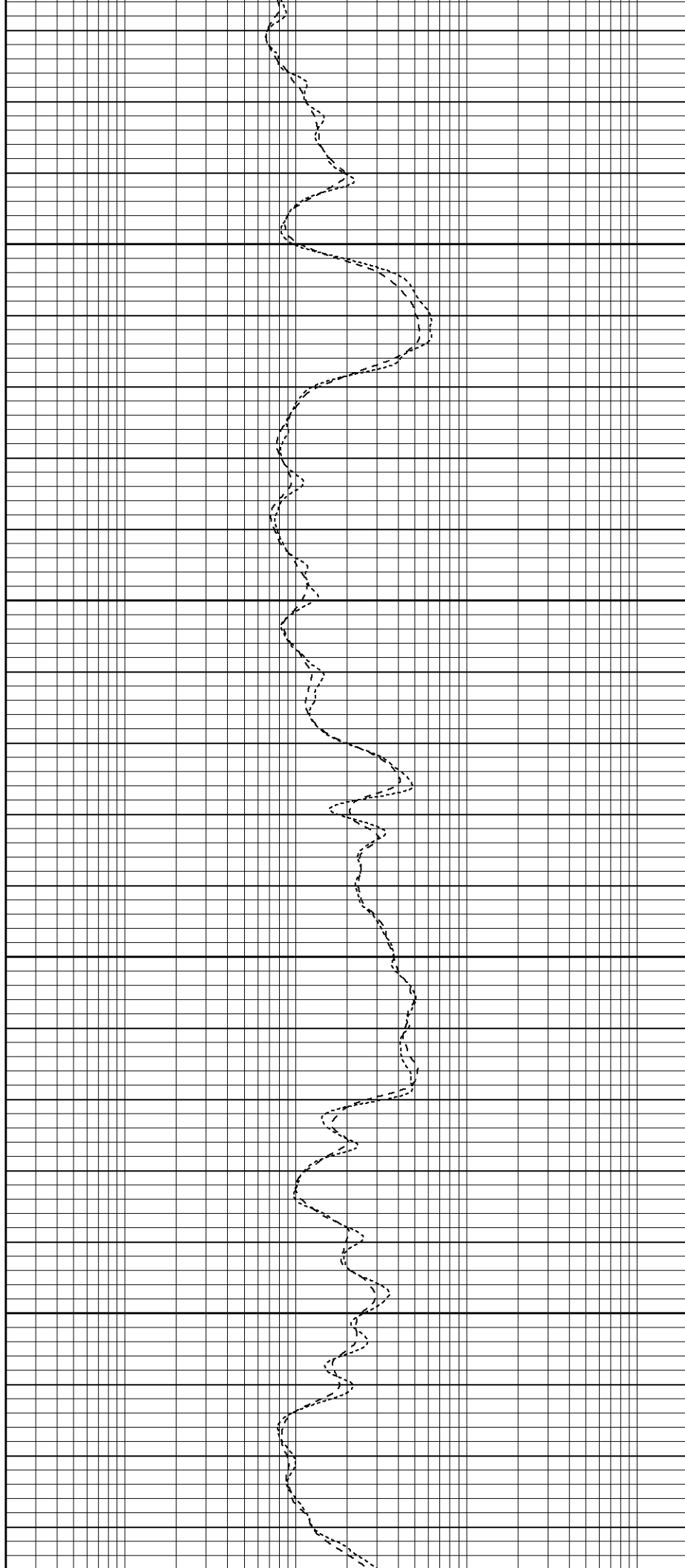


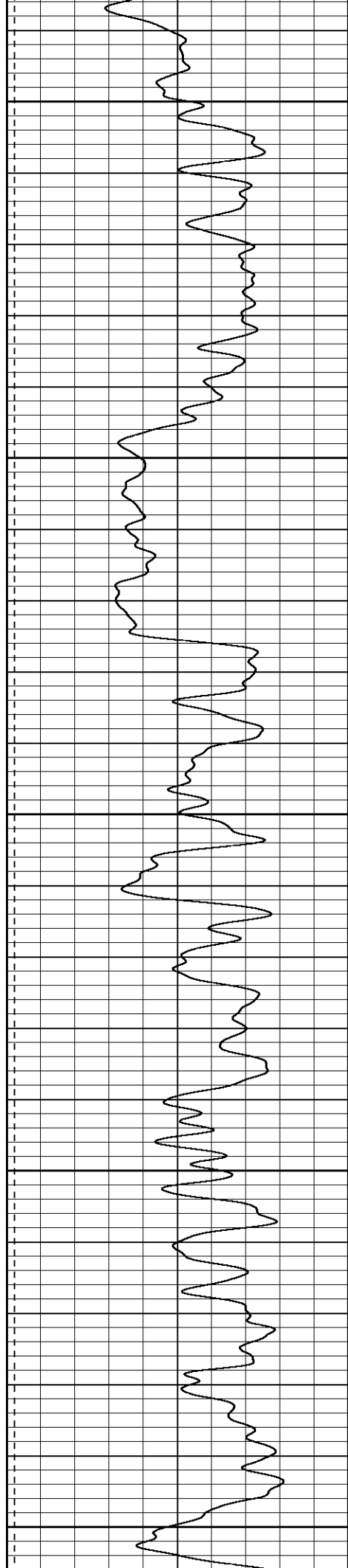
650

700

750

800





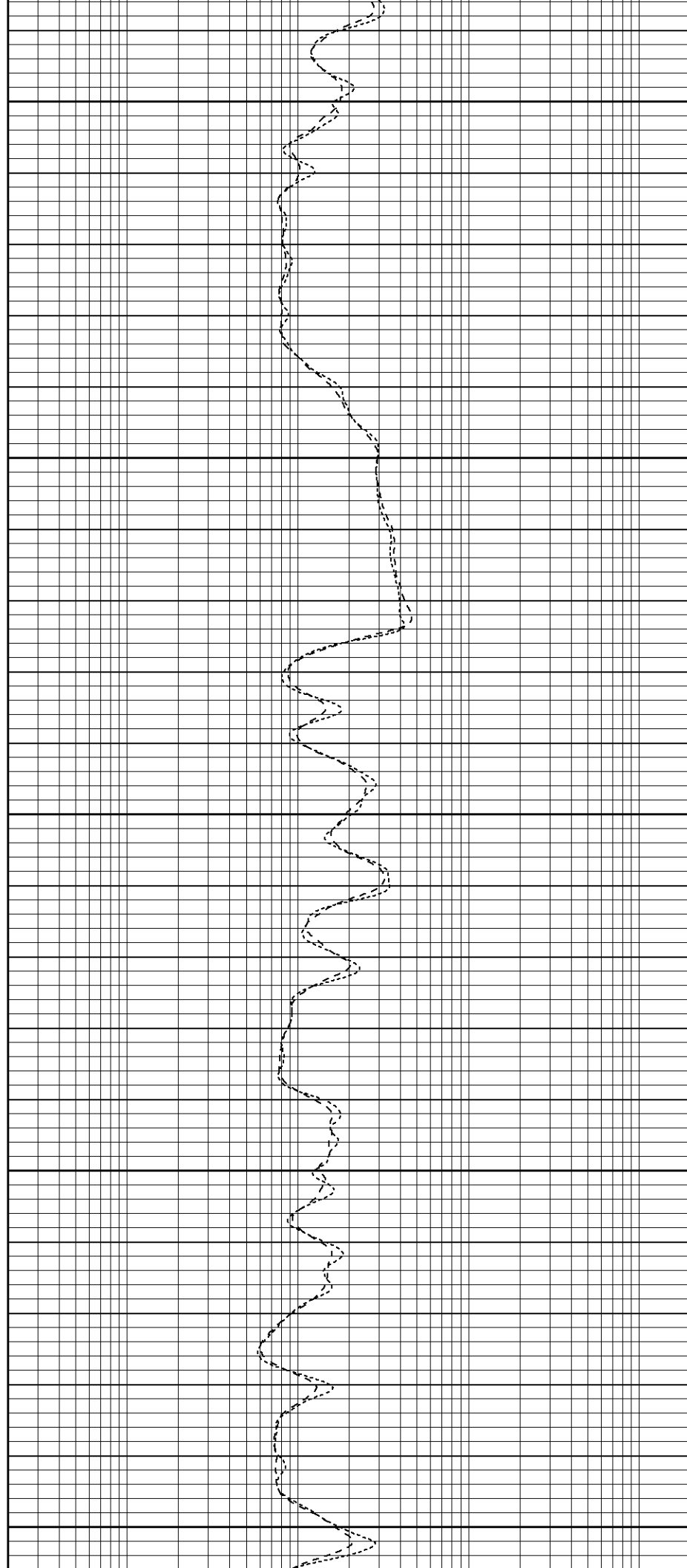
850

900

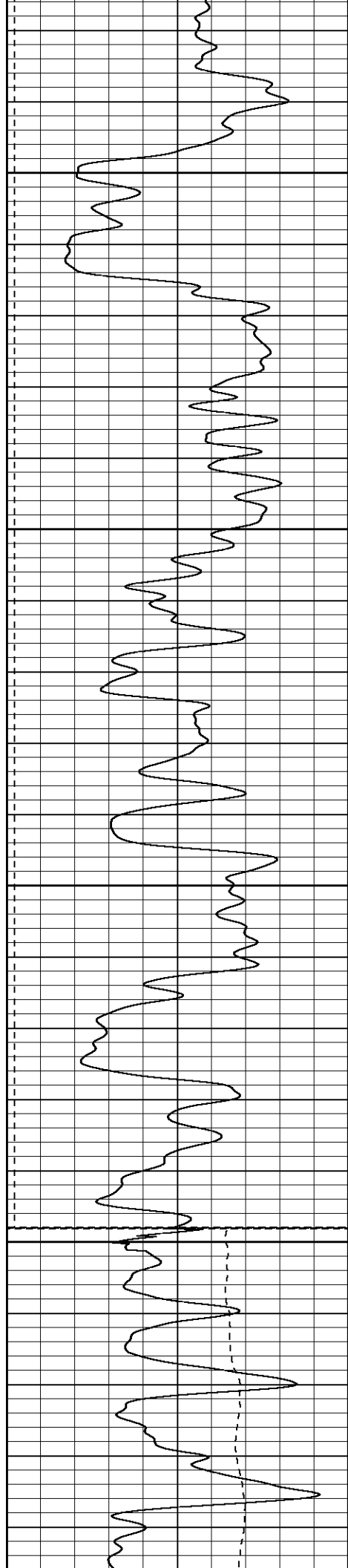
950

1000

1050





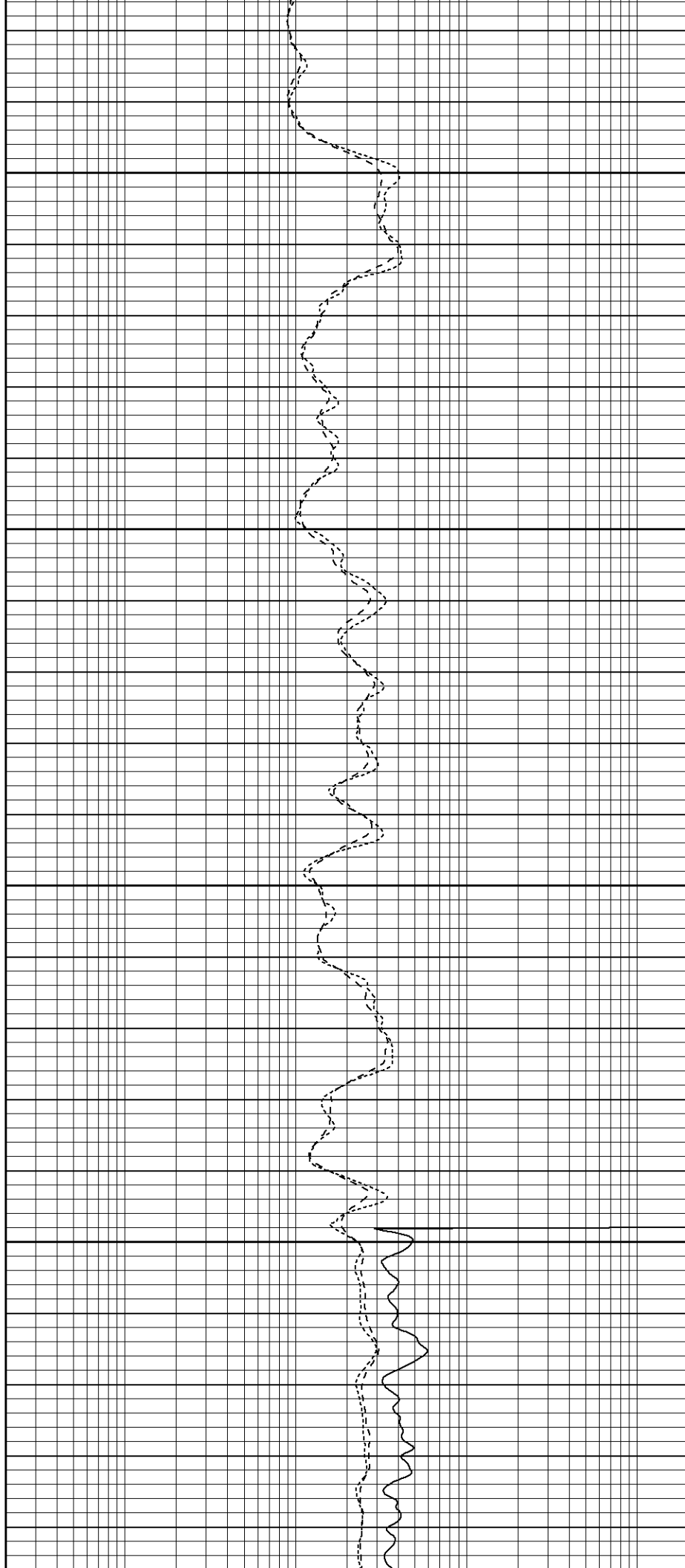


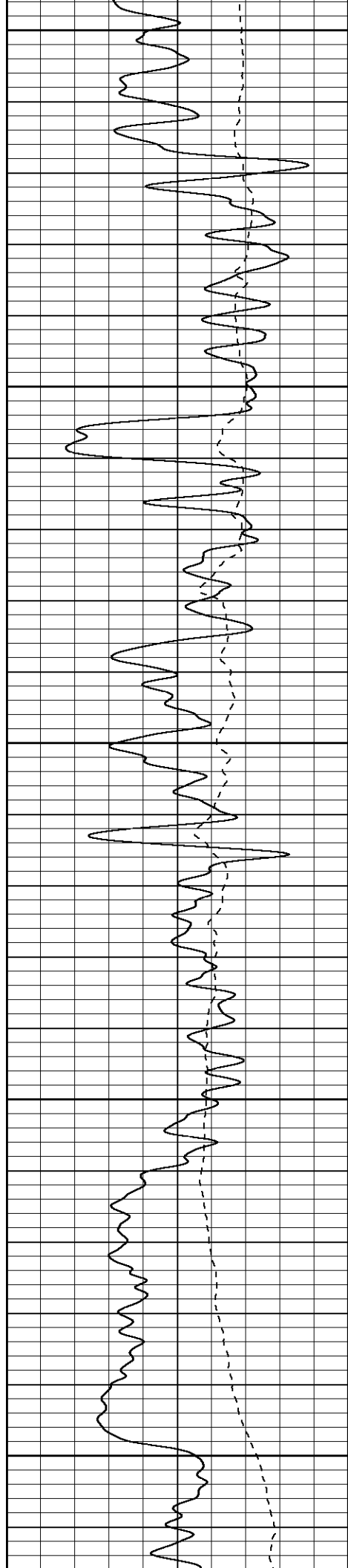
1300

1350

1400

Fluid Level  
1450





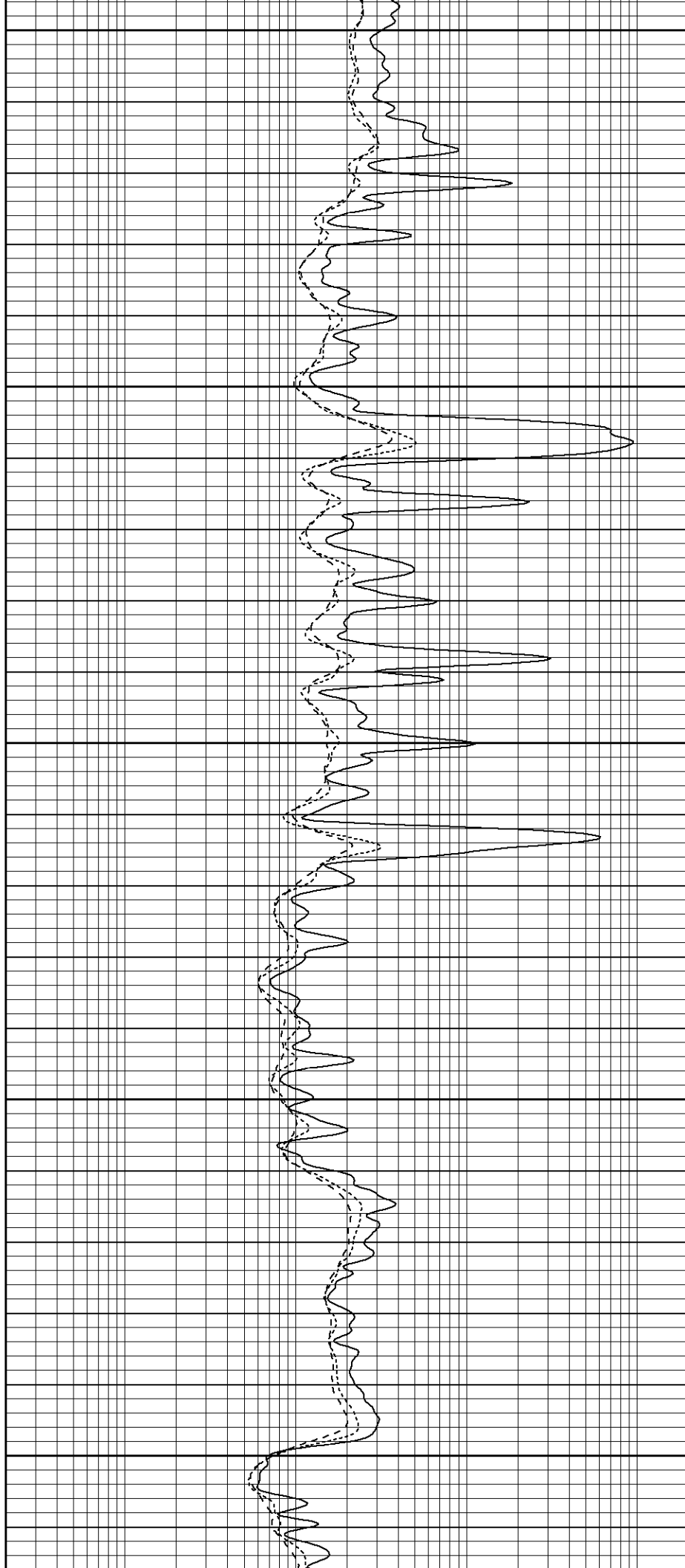
1500

1550

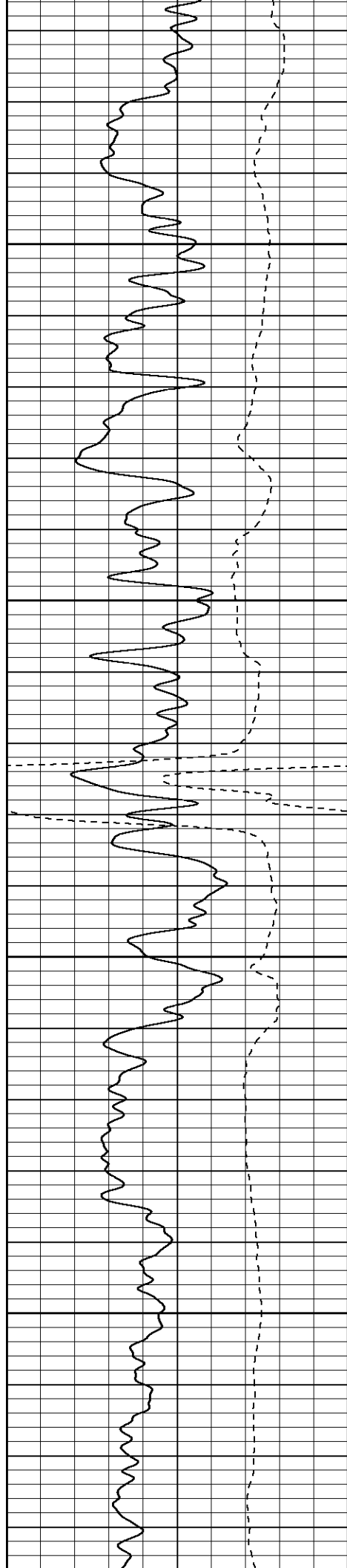
1600

1650

1700





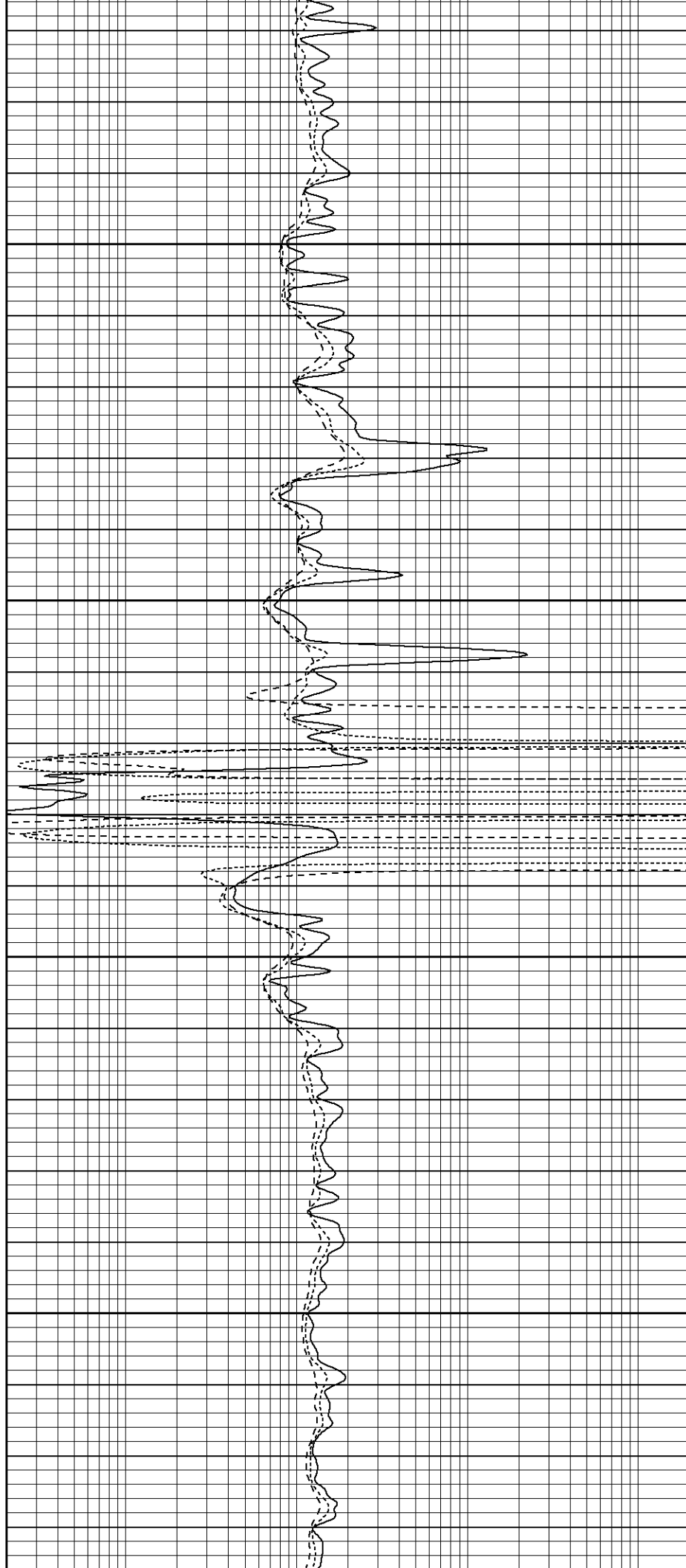


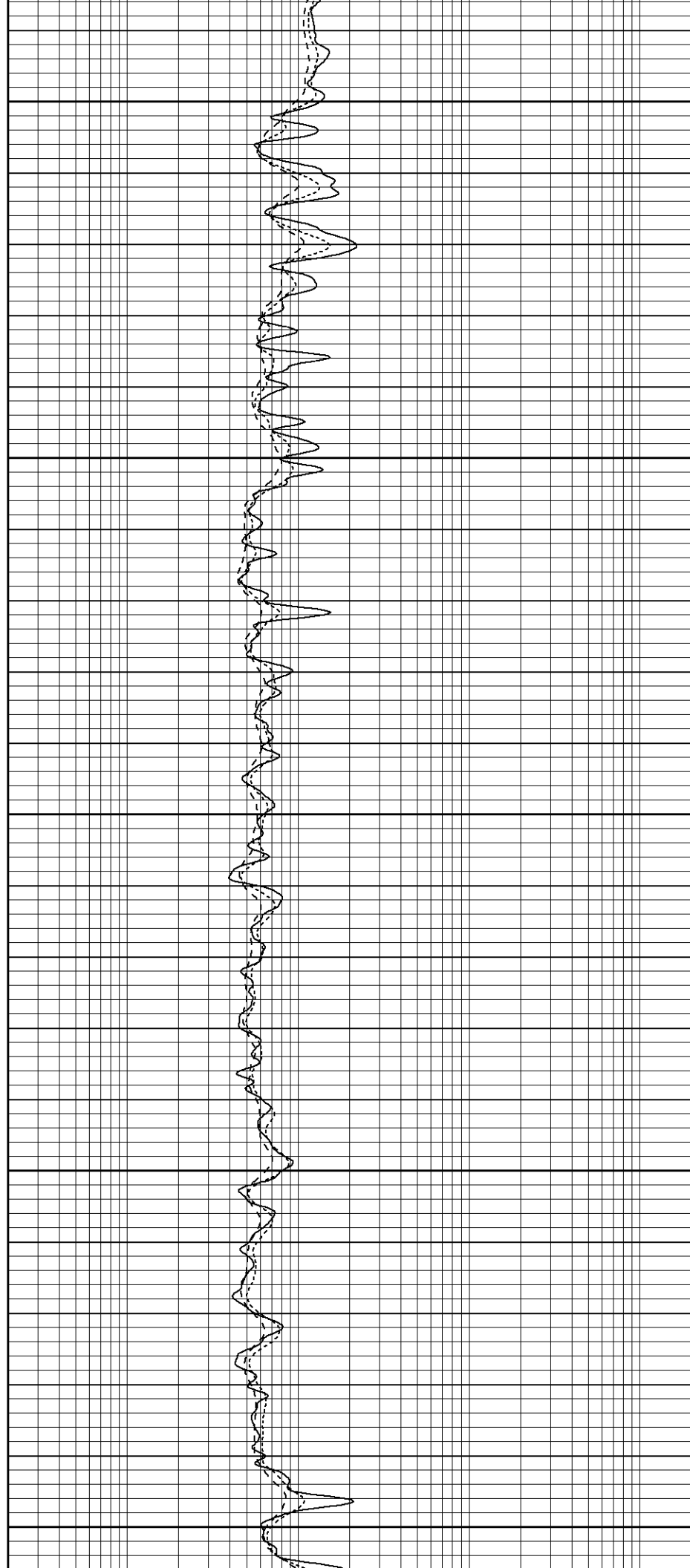
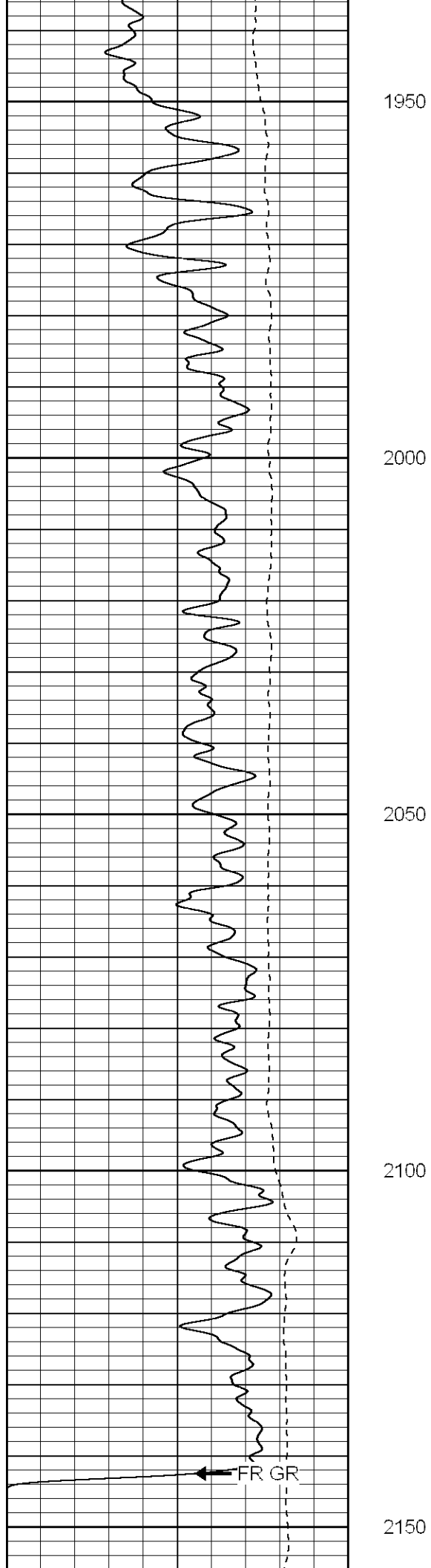
1750

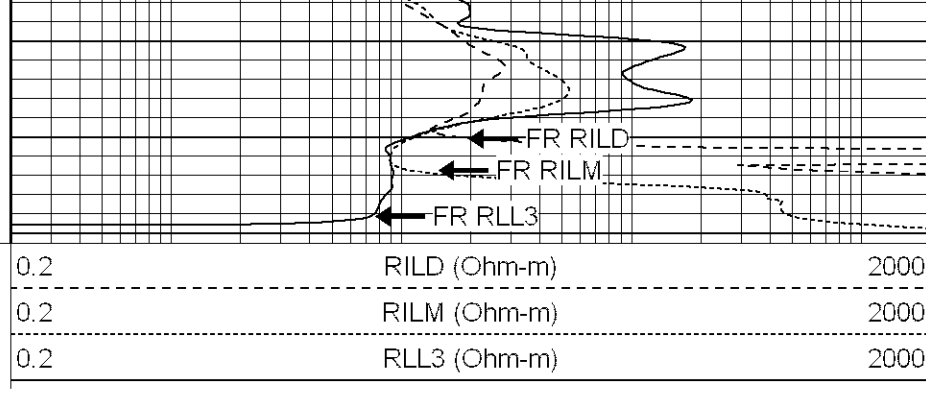
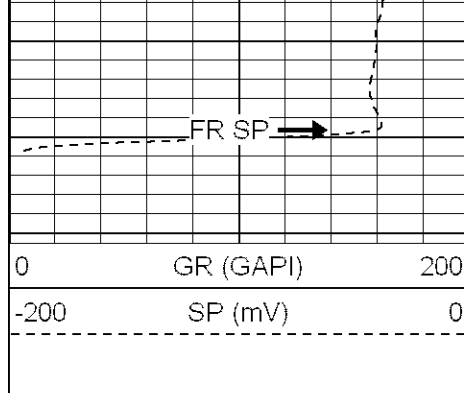
1800

1850

1900



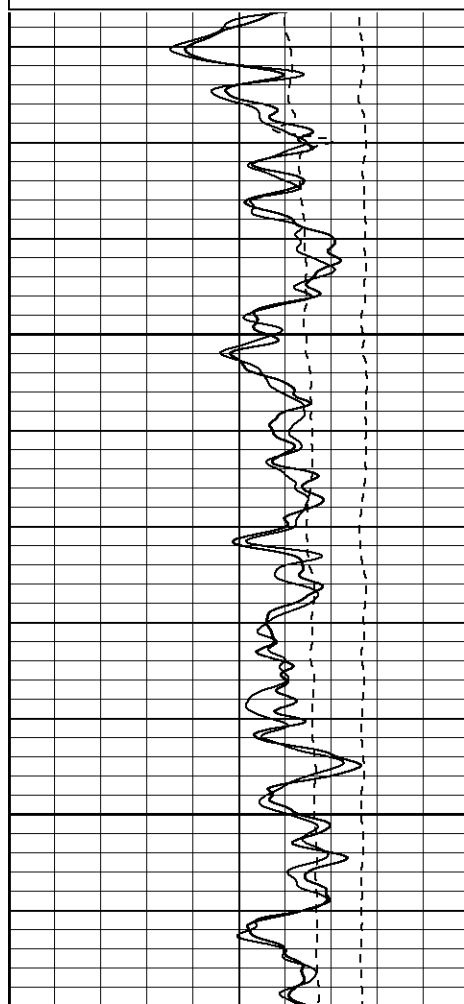
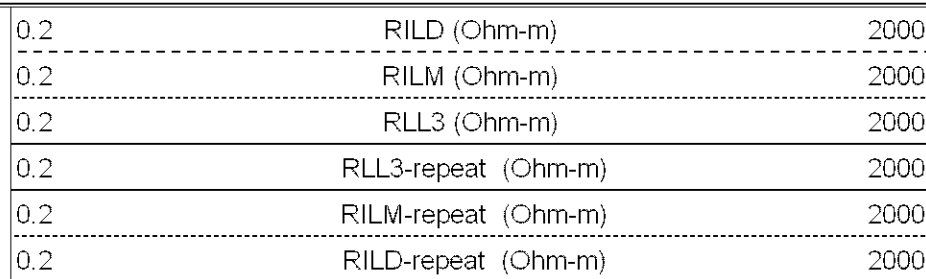
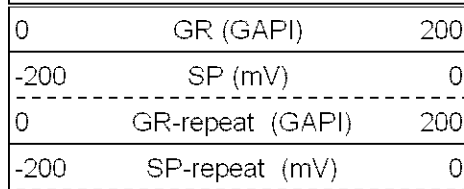




**Patterson**

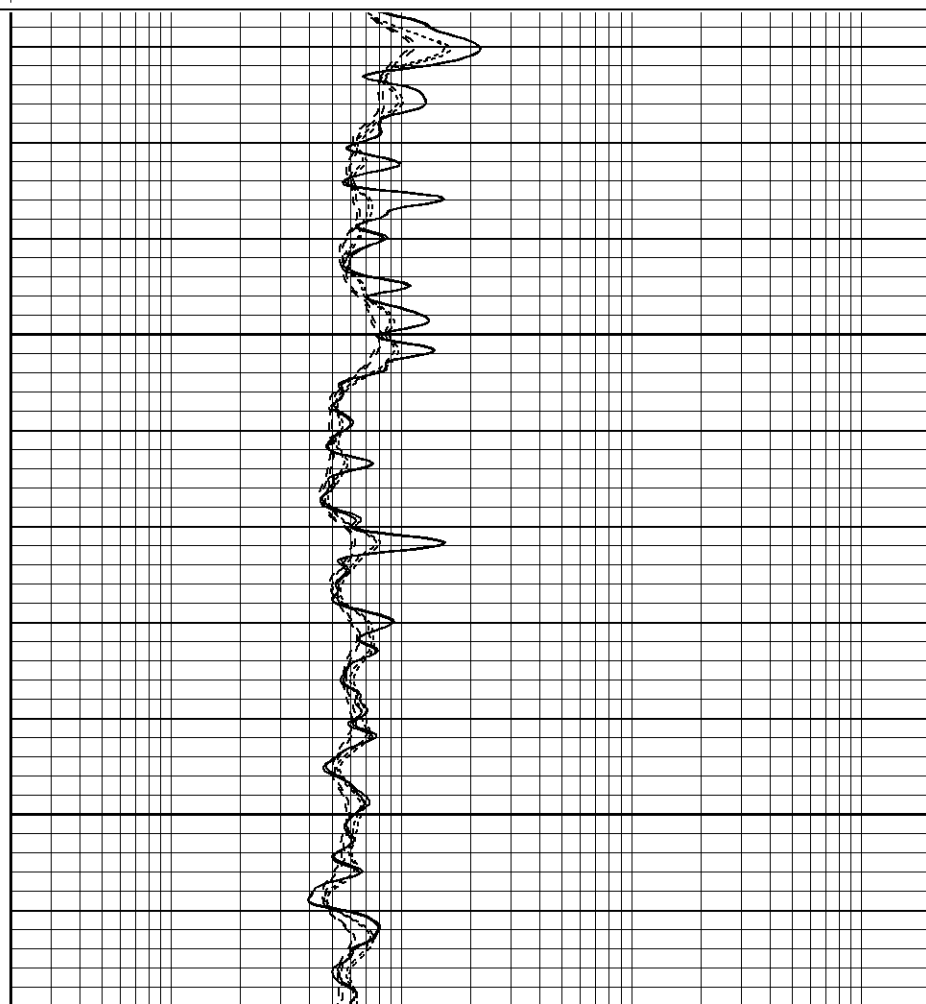
# Repeat Pass

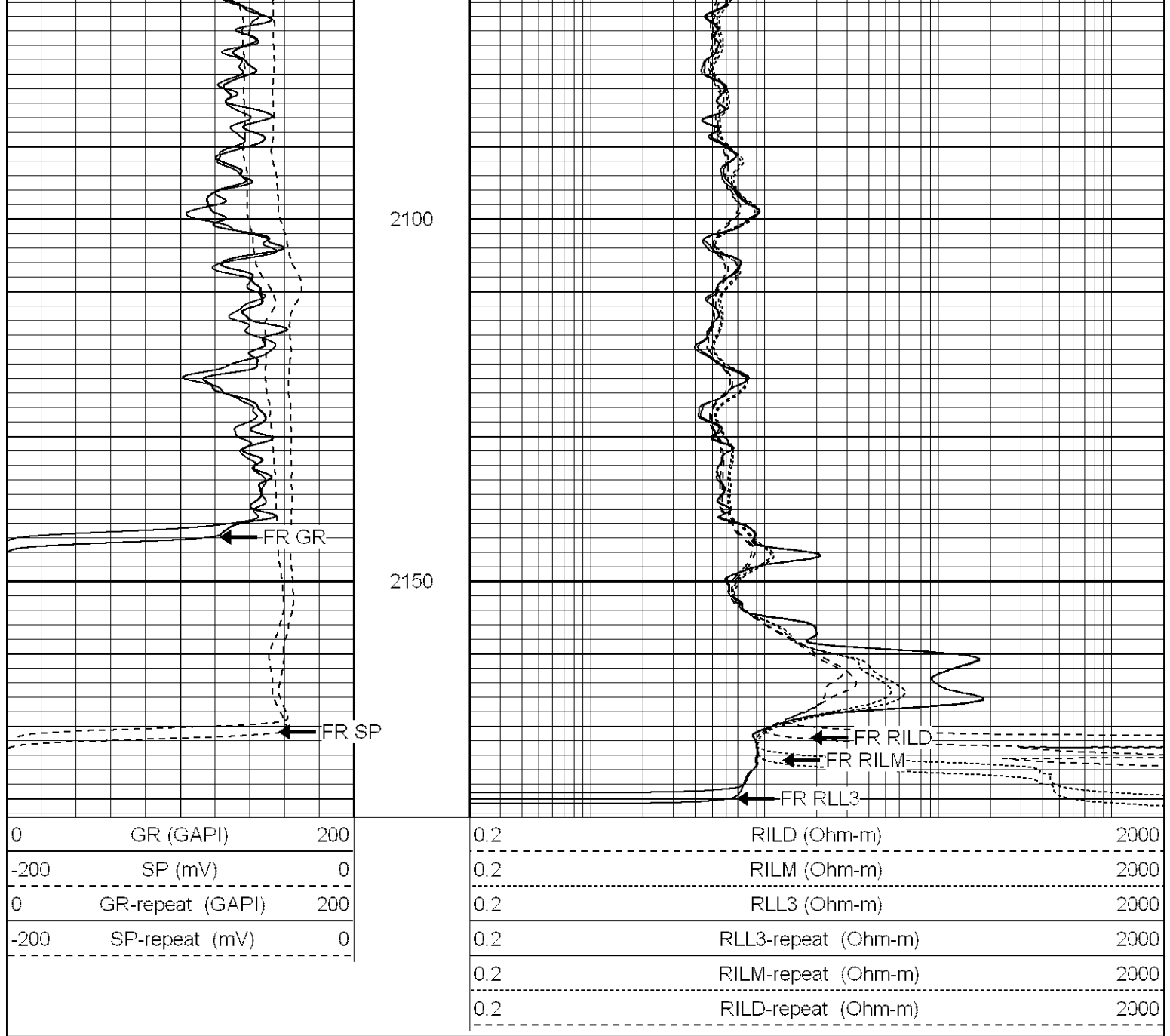
Database File: xtoac2404.db  
 Dataset Pathname: pass1.1  
 Presentation Format: dil  
 Dataset Creation: Fri Feb 17 11:40:10 2006 by Calc Warrior 7.0 STD Ope  
 Charted by: Depth in Feet scaled 1:240



2000

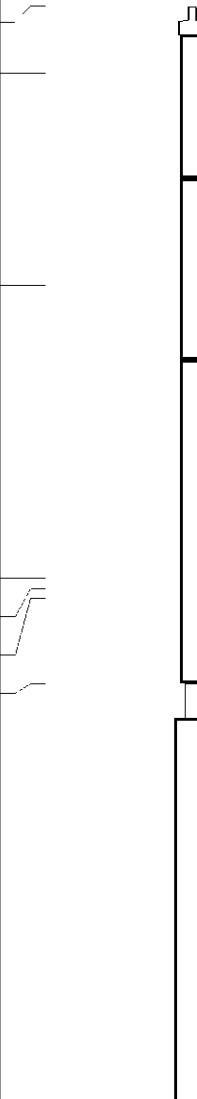
2050





Dual Induction Calibration Report					
Serial-Model:		5375-G			
Surface Cal Performed:		Mon Feb 13 14:55:47 2006			
Downhole Cal Performed:		Tue Feb 14 01:05:06 2006			
Compensated Density Calibration Report					
Serial-Model:		902-2.75POH			
Source / Verifier:		/			
Master Calibration Performed:		Thu Feb 02 11:11:37 2006			
Master Calibration					
	Density		Far Detector	Near Detector	
Magnesium	1.710	g/cc	937.77	456.05	cps
Aluminum	2.590	g/cc	165.72	224.56	cps
Spine Angle = 67.77			Density/Spine Ratio = 0.470		
	Size		Reading		

	Size		Reading	
Small Ring	8.68	in	2.31	V
Large Ring	17.00	in	4.47	V
Neutron Calibration Report				
Serial Number:	802			
Tool Model:	2.75POH			
Performed:	Thu Feb 16 09:30:49 2006			
Calibrator Value:	1	NAPI		
Calibrator Reading:	1	cps		
Sensitivity:	1	NAPI/cps		
Gamma Ray Calibration Report				
Serial Number:	804			
Tool Model:	2.75POH			
Performed:	Thu Feb 09 14:37:22 2006			
Calibrator Value:	1.0	GAPI		
Background Reading:	0.0	cps		
Calibrator Reading:	1.0	cps		
Sensitivity:	0.8100	GAPI/cps		

Sensor	Offset (ft)	Schematic	Description	Len (ft)	OD (in)	Wt (lb)
CHD	39.37		None	0.75	1.50	5.00
GR	37.64		GR-2.75POH (804) Probe	3.73	2.75	43.00
NEU	32.10		NEU-2.75POH (802) Probe Epithermal	4.75	2.75	58.00
LSD	24.47		CDL-2.75POH (902) Probe	8.43	2.75	106.00
DCAL	24.19		Probe	0.89	3.50	20.00
SSD	23.95					
10pin	21.72					

CILD SP	10.60 10.60		DIL-G (5375) Gearhart	20.83	4.00	345.00
CILM	6.89					
RLL3	1.70					
Dataset: /field/well/run1/_plots/_jobs_/dil Total Length: 39.37 ft Total Weight: 577.00 lb O.D. 4.00 in						