

CEMENT BOND LOG

Company XTO Energy Inc.

Well Apache Canyon 35-07

Field Purgatoire River

County Las Animas State Colorado

Location: API #: 05 071 09320 00

2561' FNL & 1466' FEL

SEC 35 TWP 33S RGE 67W

Permanent Datum	Ground Level	Elevation	6953
-----------------	--------------	-----------	------

Drilling Measured From	Ground Level	G.L. 6953

	9-06-07
--	---------

	1980'
--	-------

$\frac{1}{a!}$	1808'
----------------	-------

	7 7/8"
--	--------

	///
--	-----

Top	Surface
-----	---------

om	10:45 A.M.
----	------------

	Trinidad
--	----------

Bit	From	To
-----	------	----

[illegible]

	g/c
--	-----

	C/N	
--	-------	--

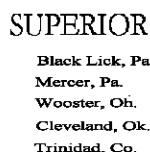
Elevation	K.B. --- D.F. --- G.L. 6953'
-----------	------------------------------------

<<< Fold Here >>>

All interpretations are opinions based on inferences from electrical or other measurements and we cannot and do not guarantee the accuracy or correctness of any interpretation, and we shall not, except in the case of gross or willful negligence on our part, be liable or responsible for any loss, costs, damages, or expenses incurred or sustained by anyone resulting from any interpretation made by any of our officers, agents or employees. These interpretations are also subject to our general terms and conditions set out in our current Price Schedule.

Comments

Well Directions:
First Bosque entrance, right on Cherry Canyon,
at Y stay right, second right to location.



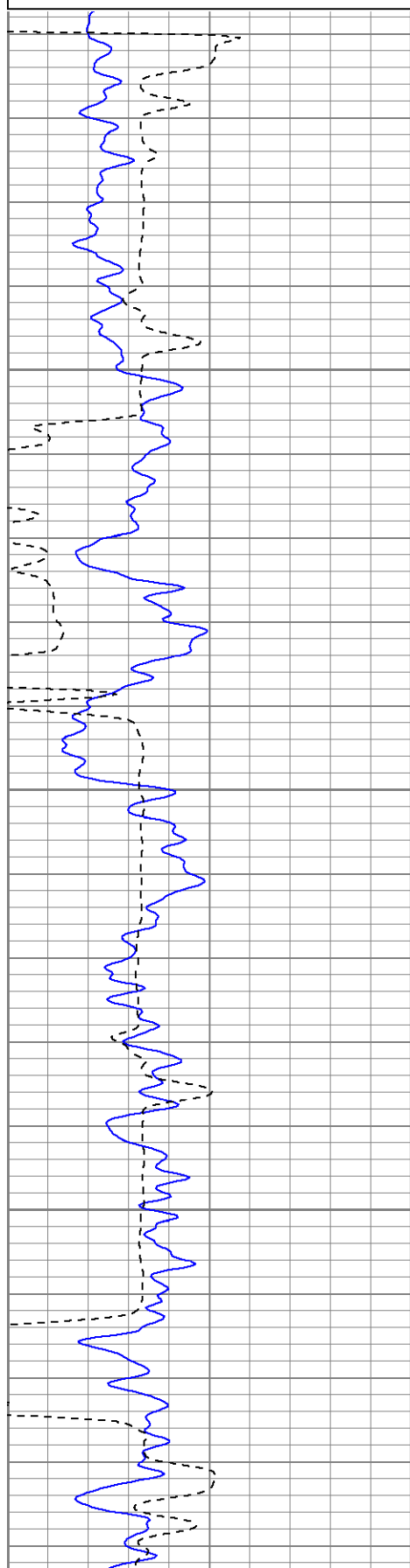
Main Pass

Database File: xtoac3507-090507b.db
Dataset Pathname: pass2
Presentation Format: cblrt
Dataset Creation: Thu Sep 06 10:45:25 2007 by Log Open-Cased 061129
Charted by: Depth in Feet scaled 1:240

0	GR (GAPI)	200
400	TT3 (usec)	200

0	AMP3 (mV)	100
18	CCL	-2
200	CBL5	1200

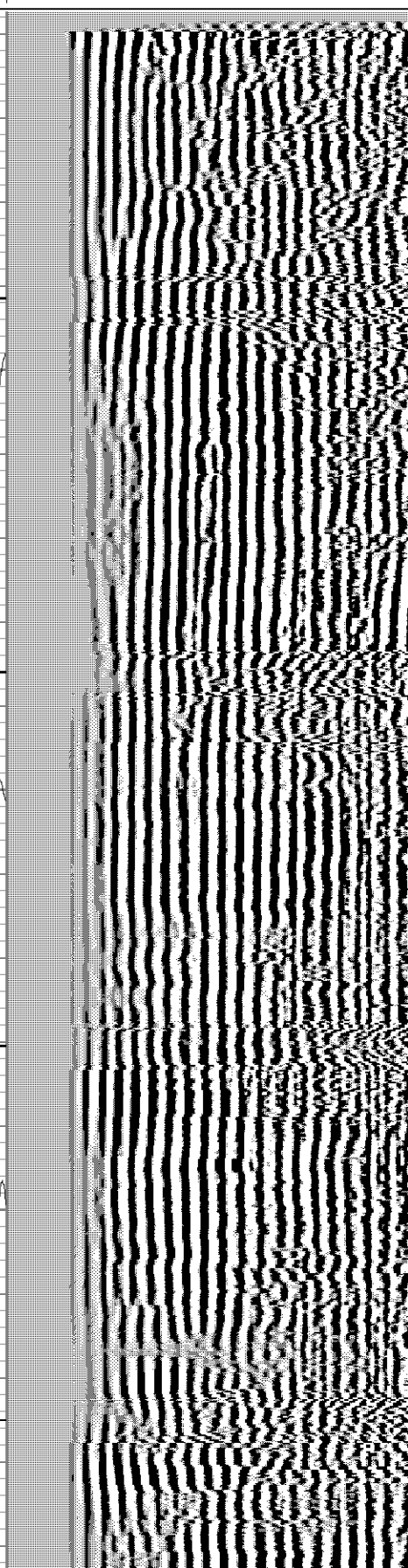
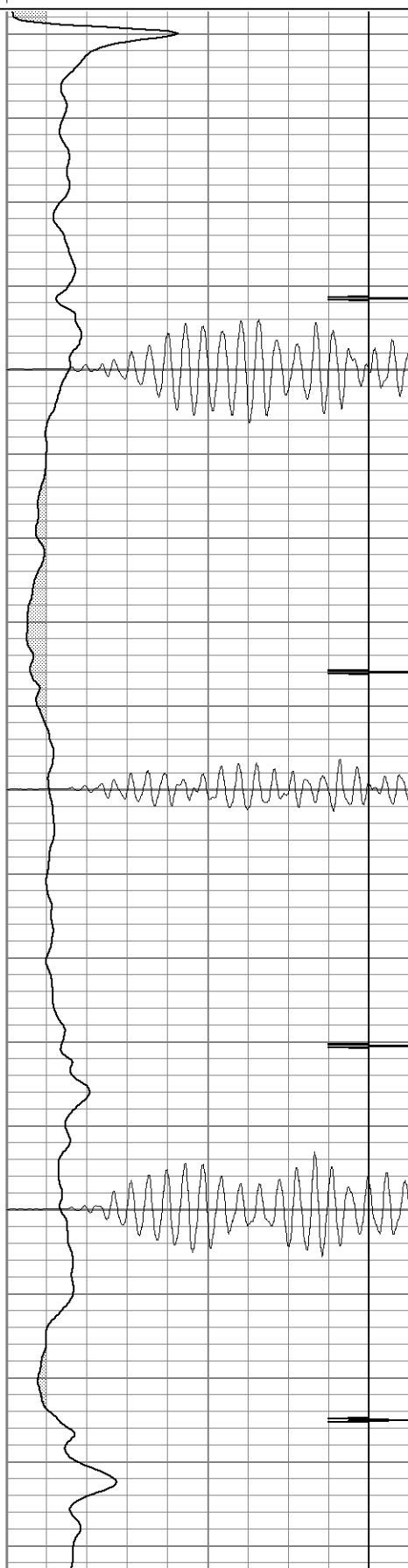
200	Variable Density	1200
-----	------------------	------

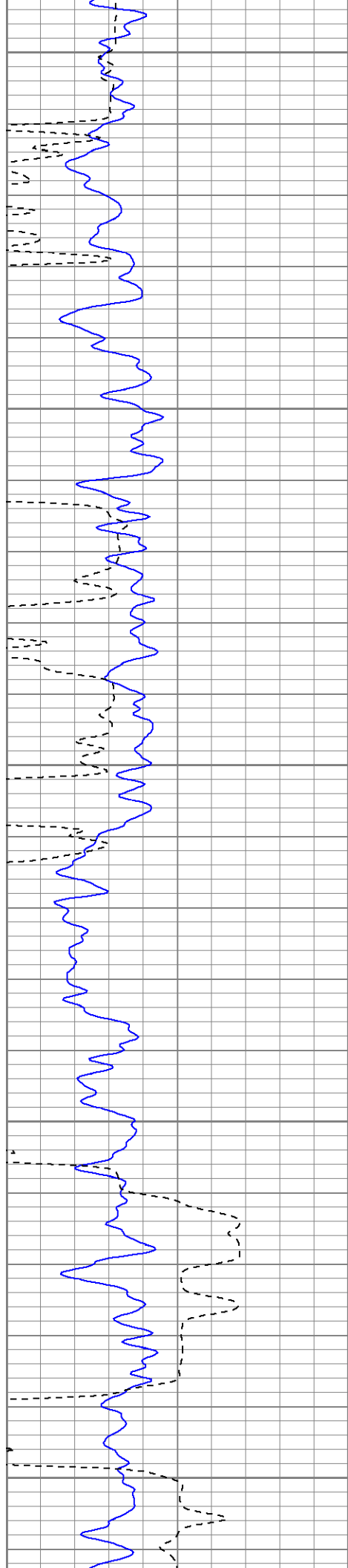


50

100

150





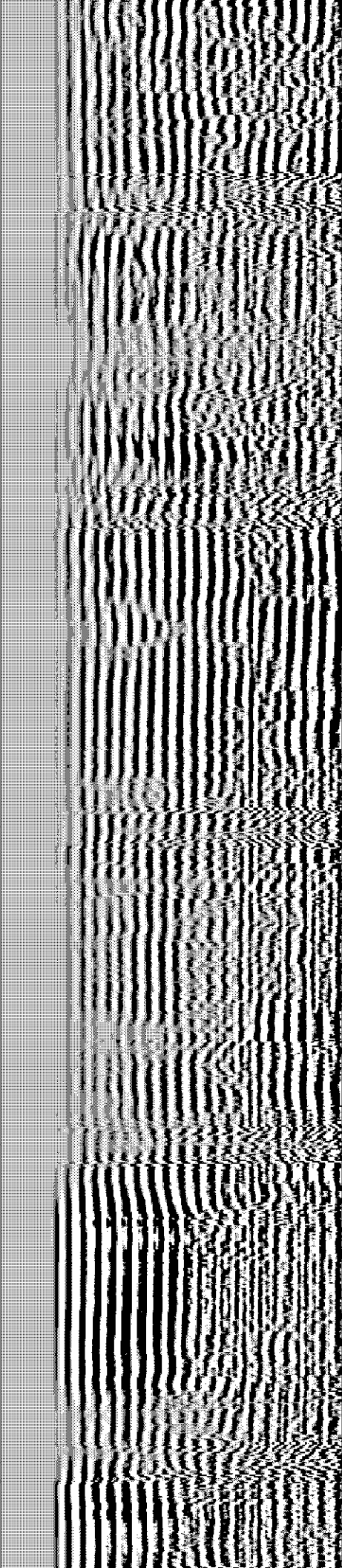
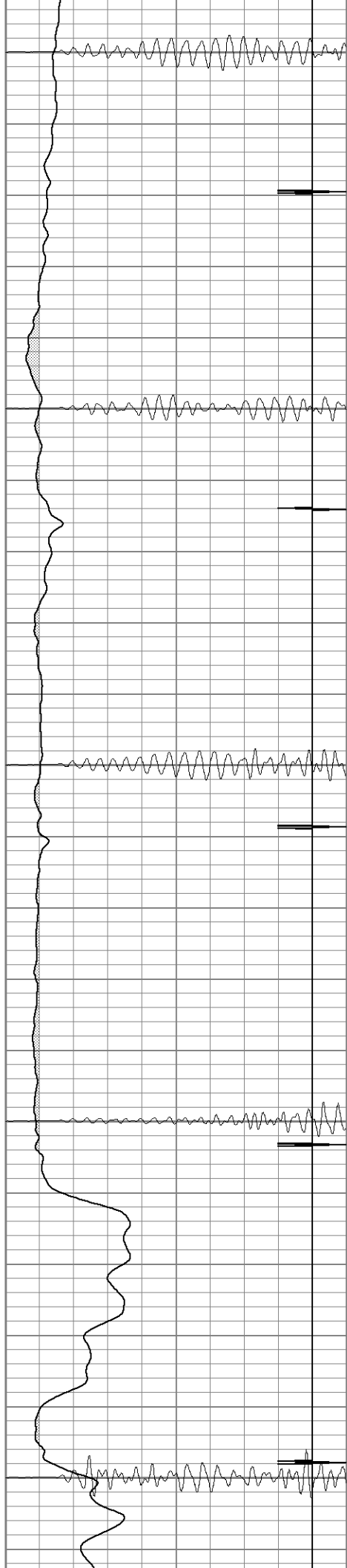
200

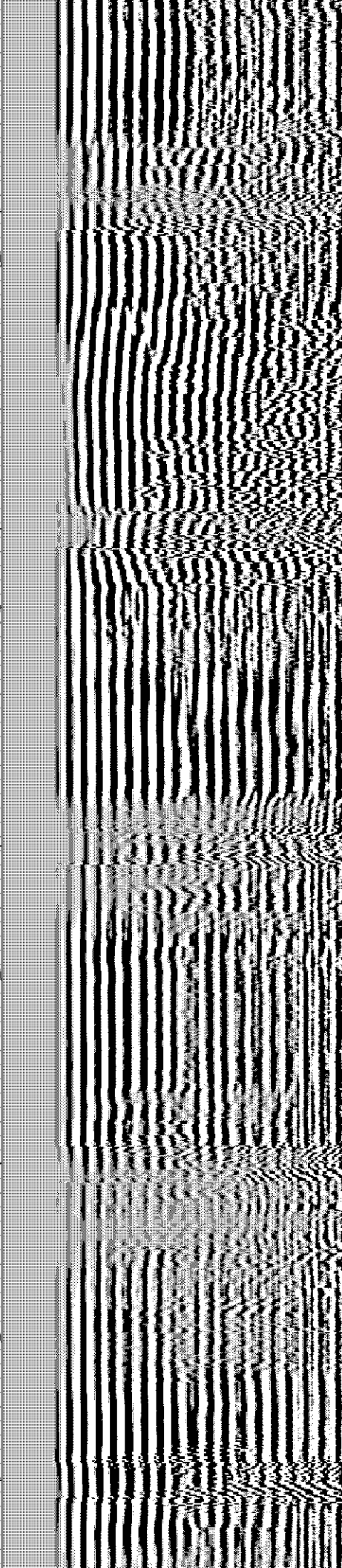
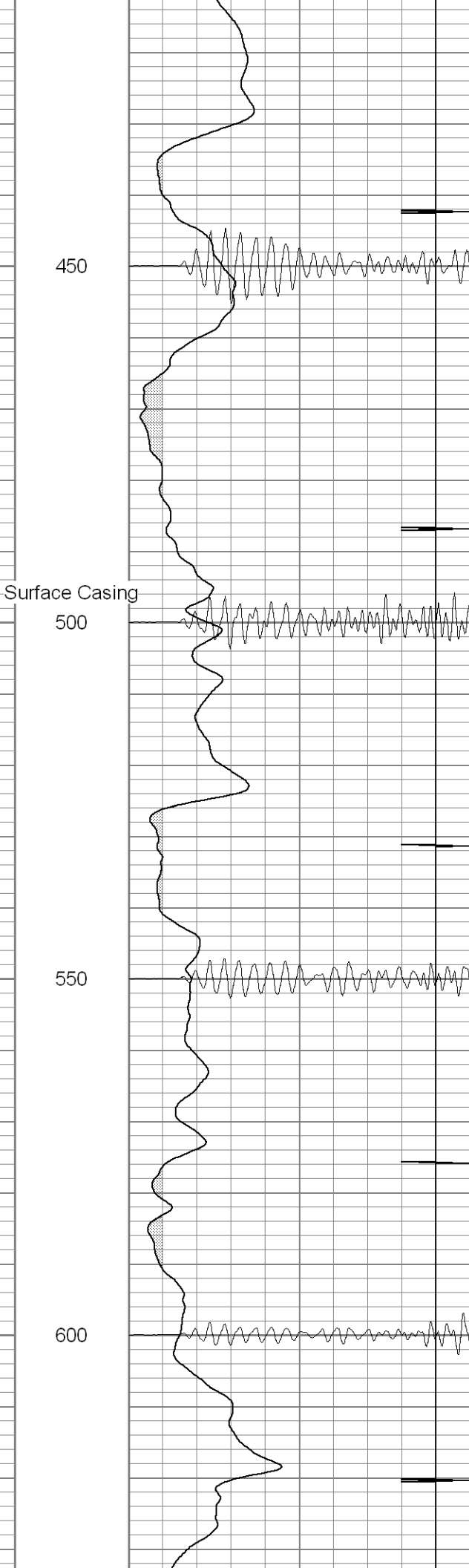
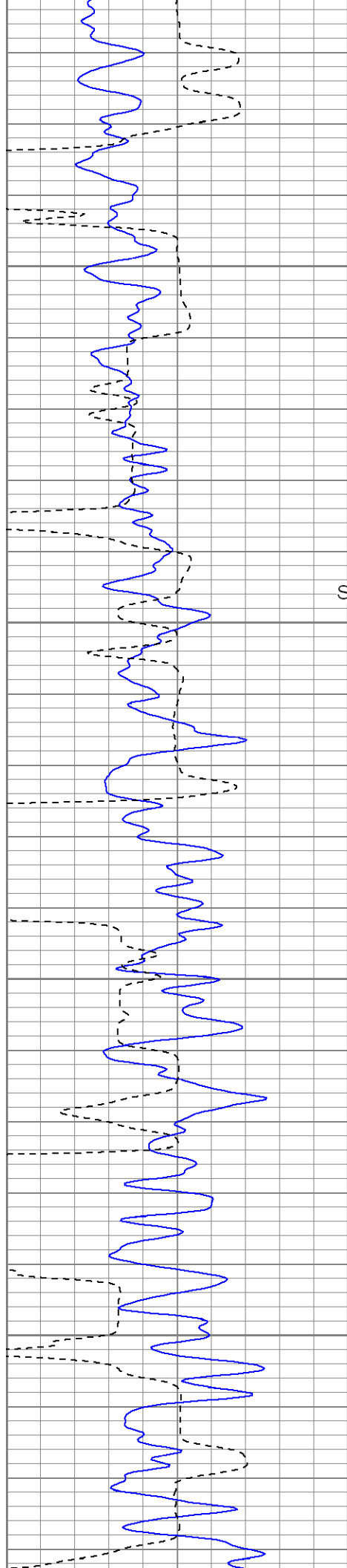
250

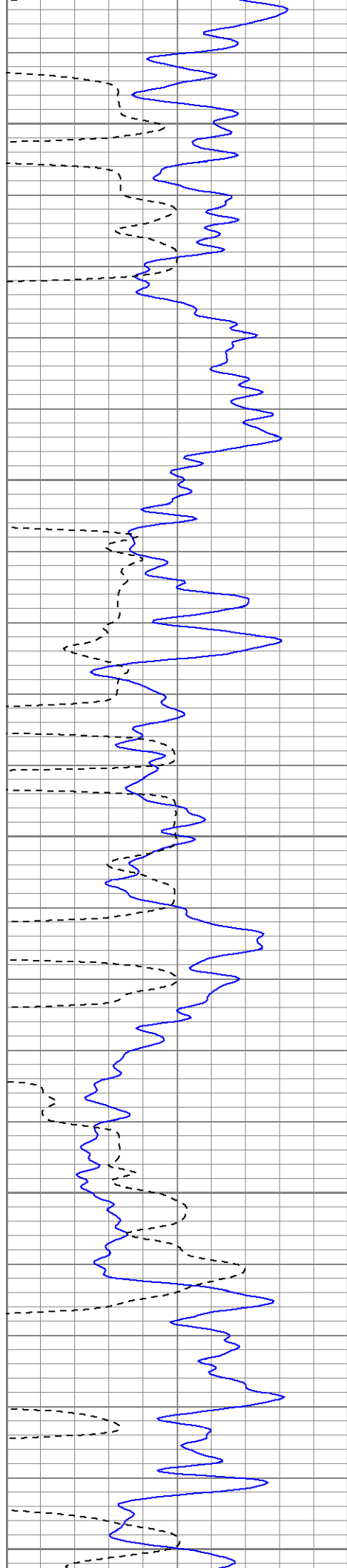
300

350

400







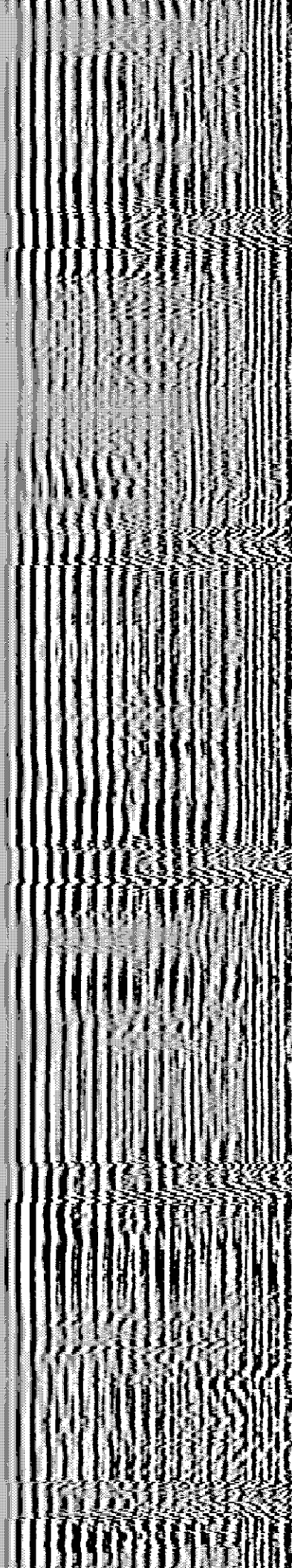
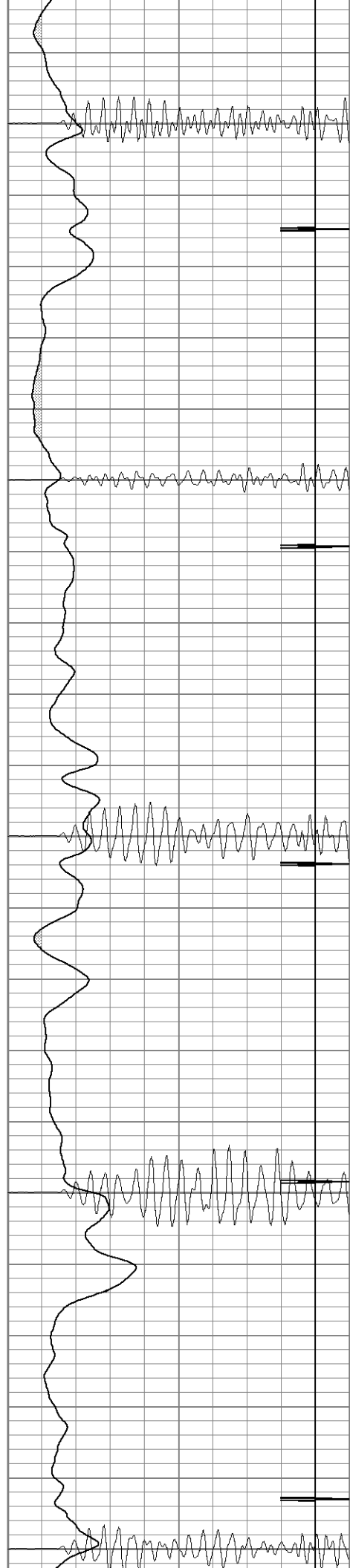
650

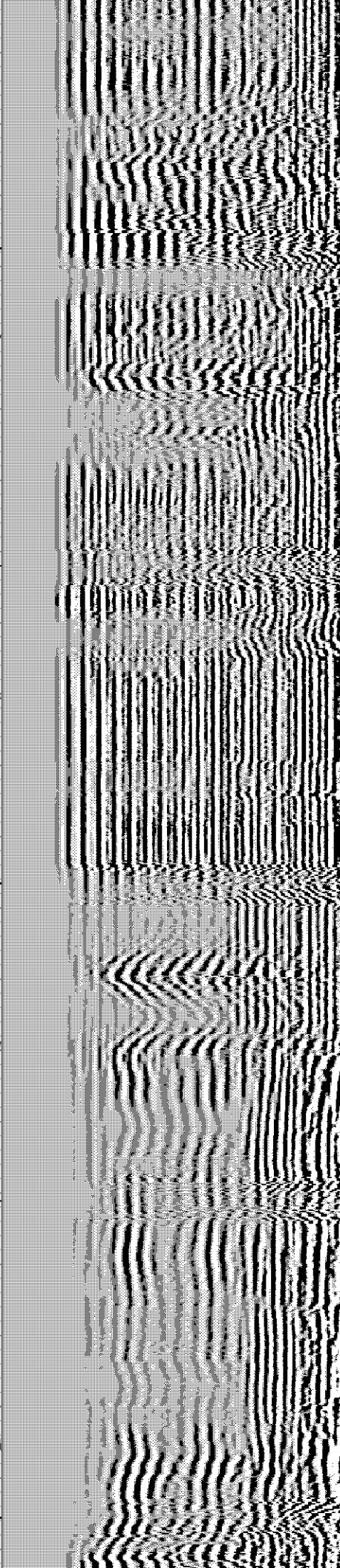
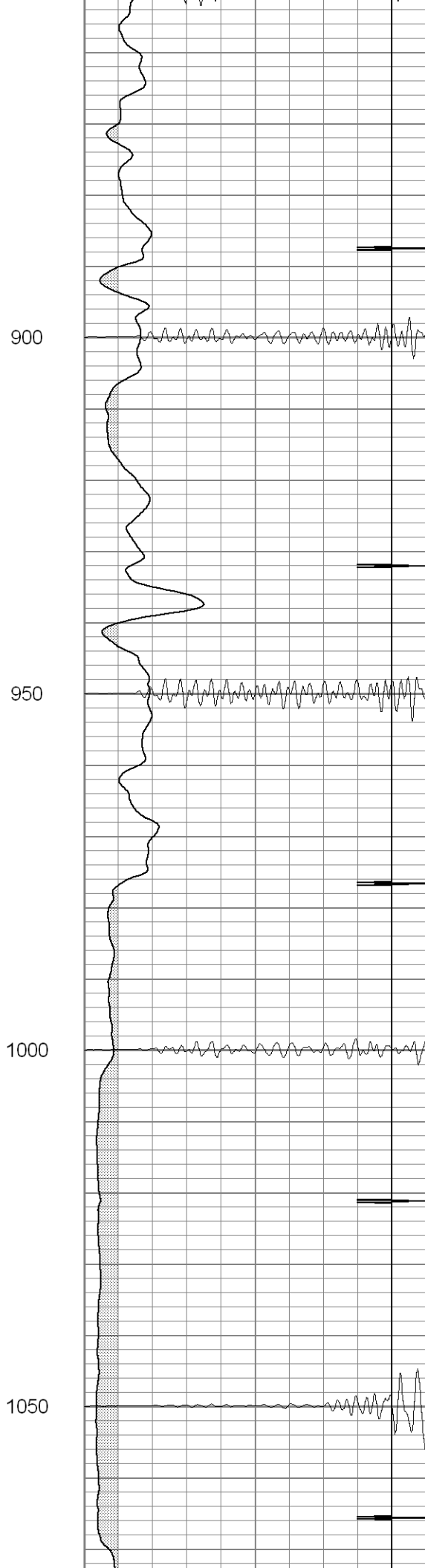
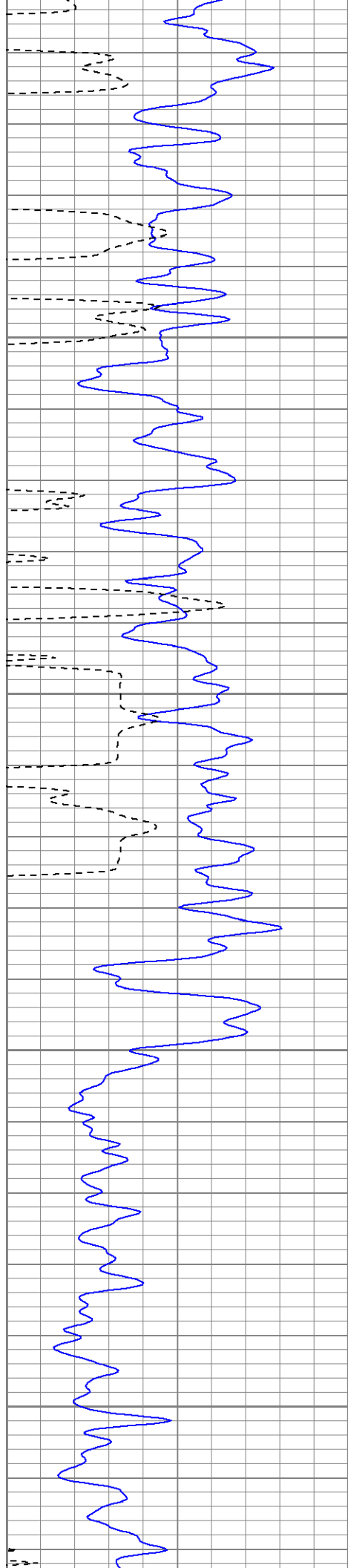
700

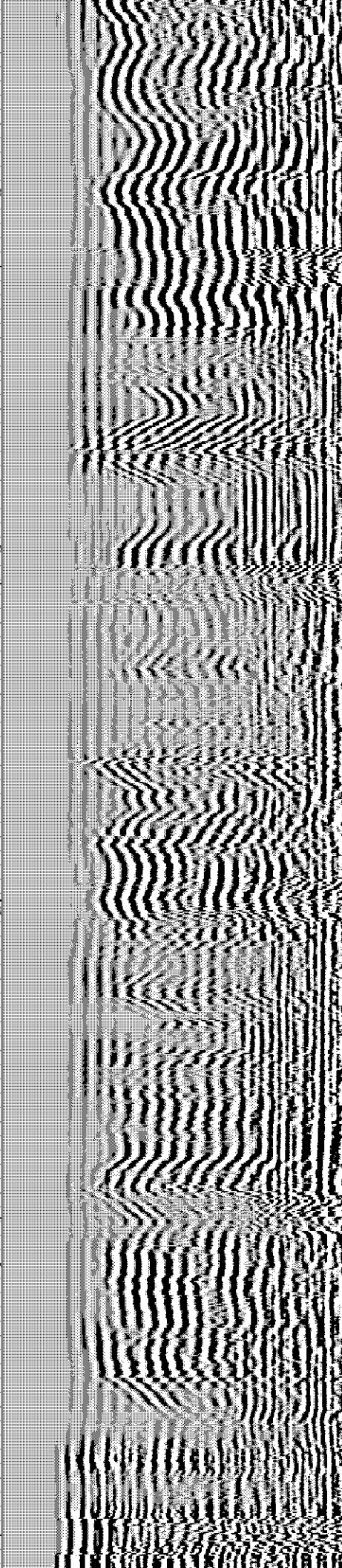
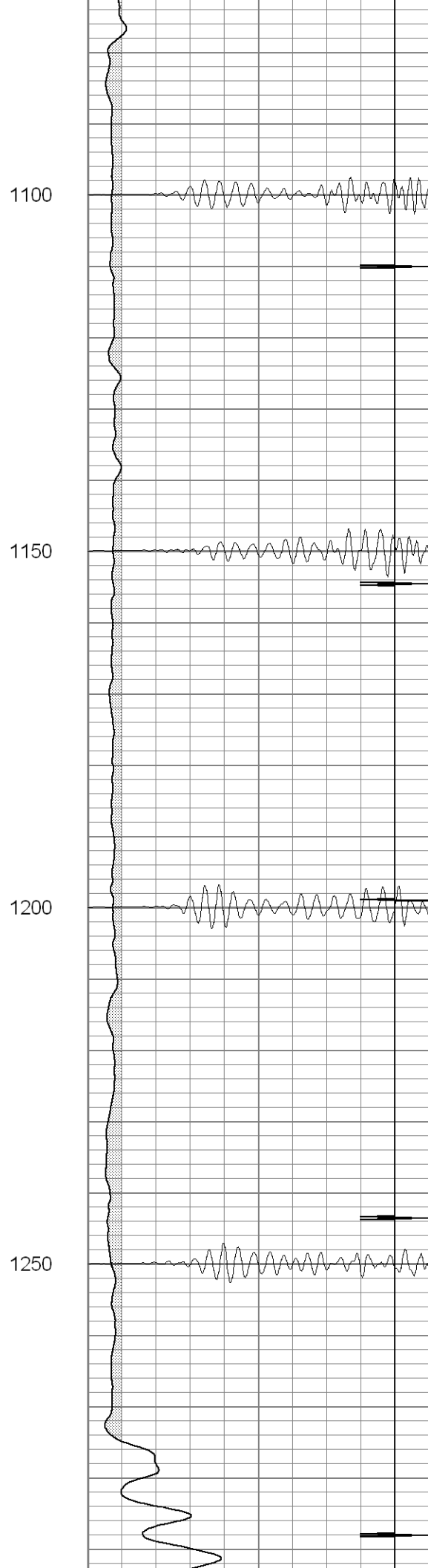
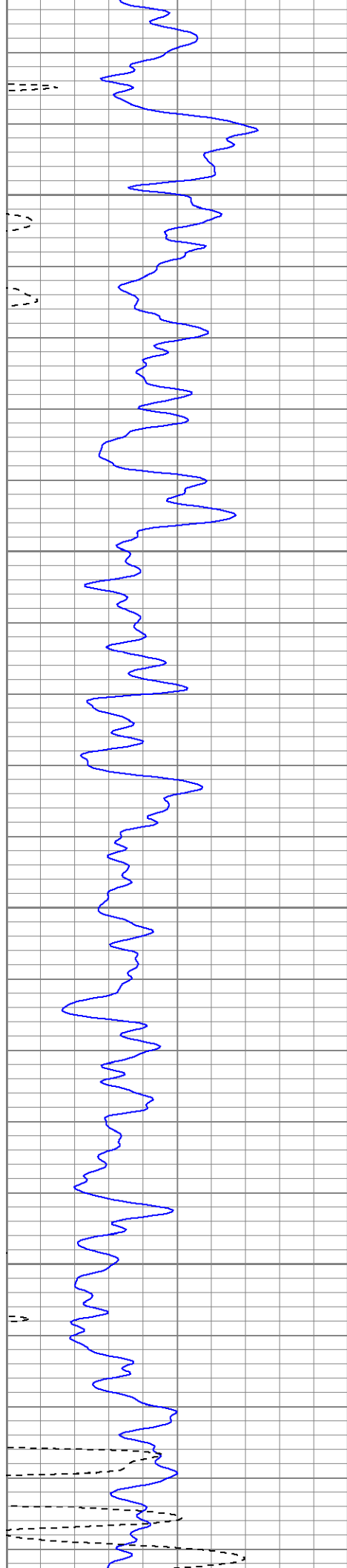
750

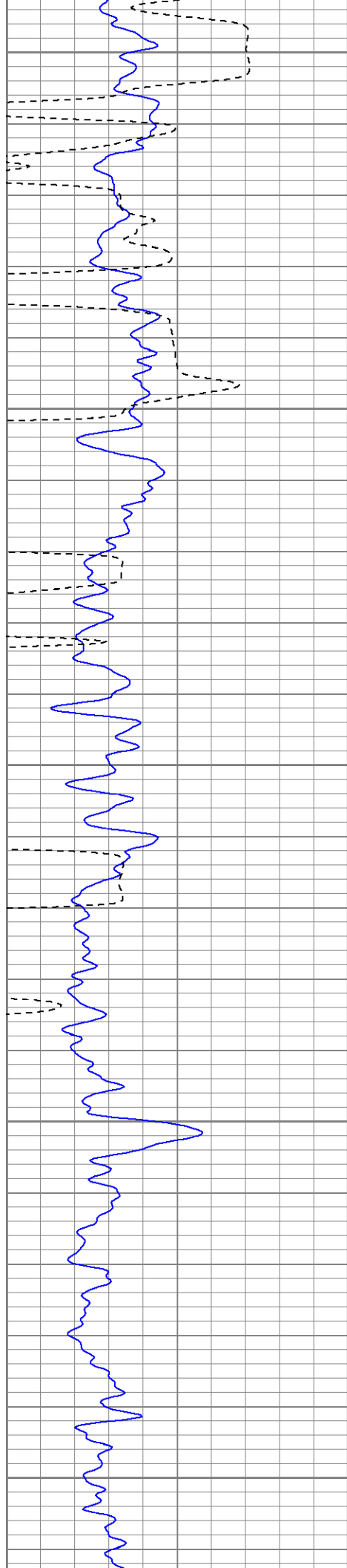
800

850









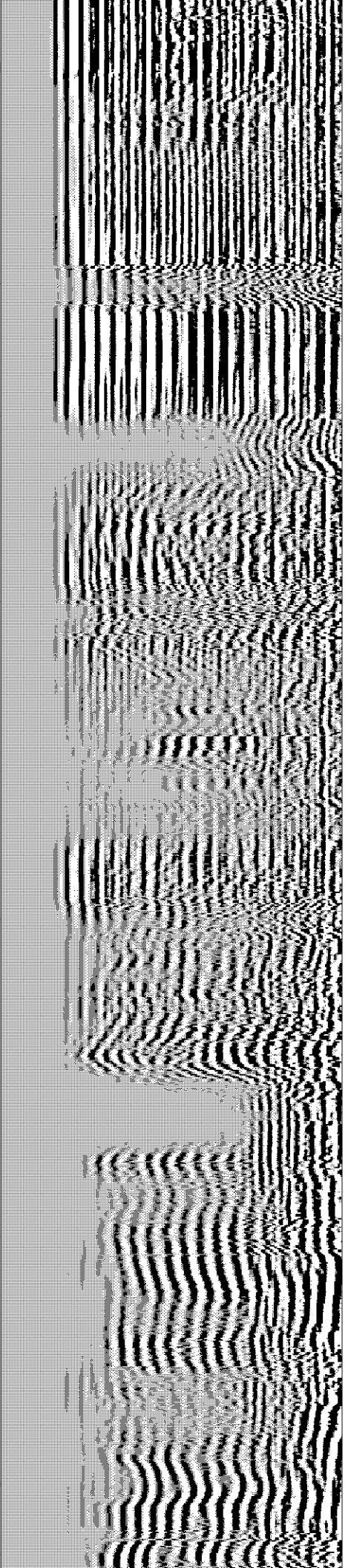
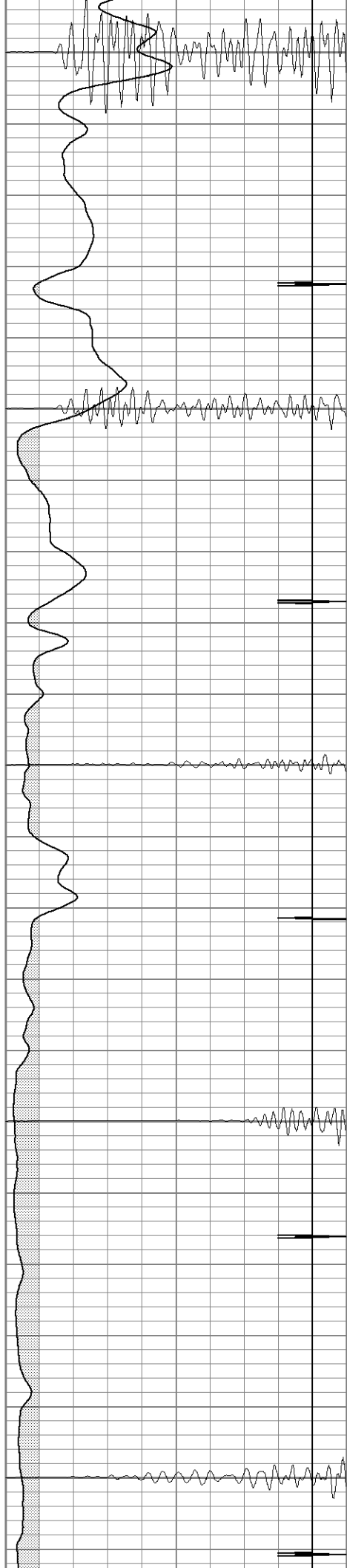
1300

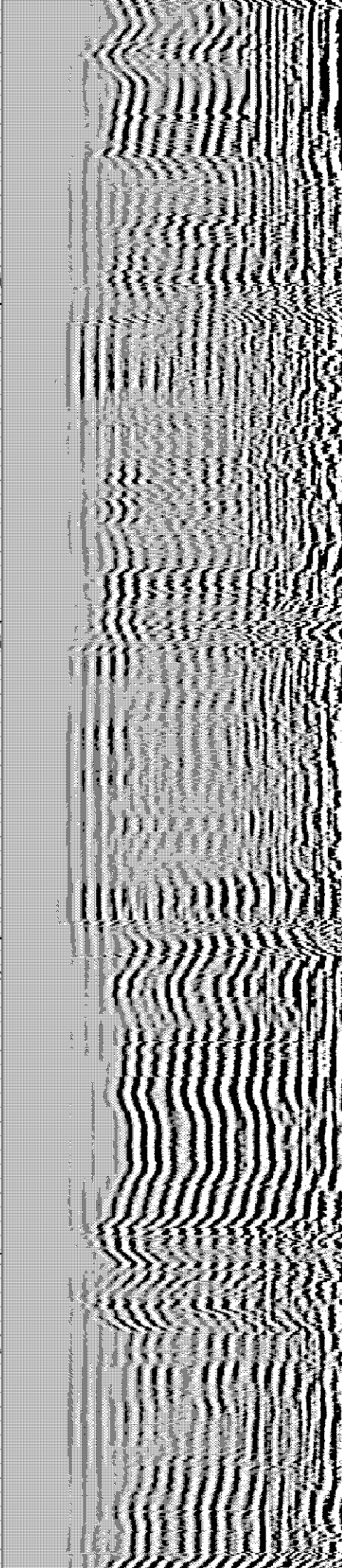
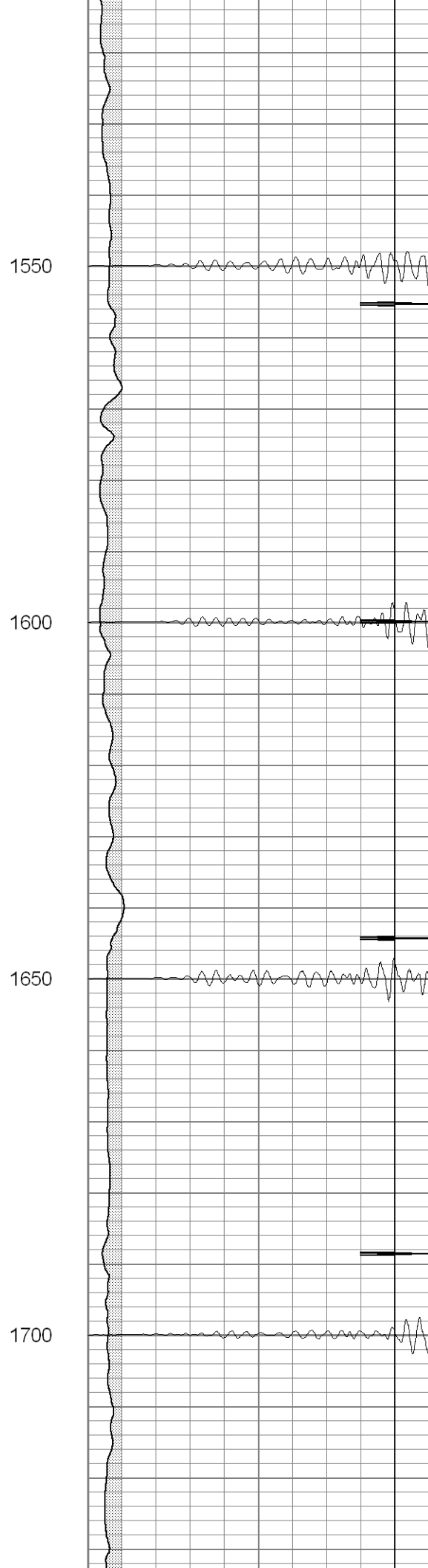
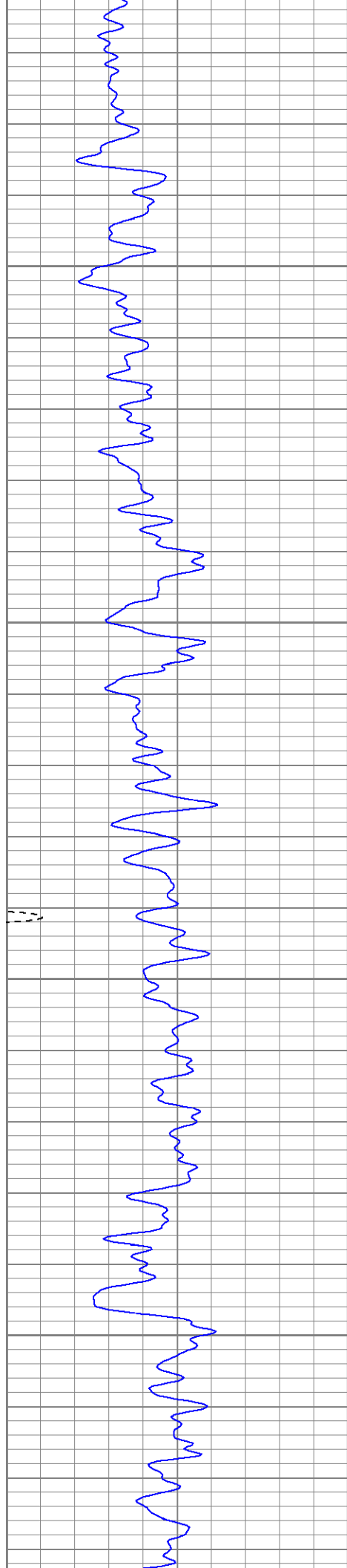
1350

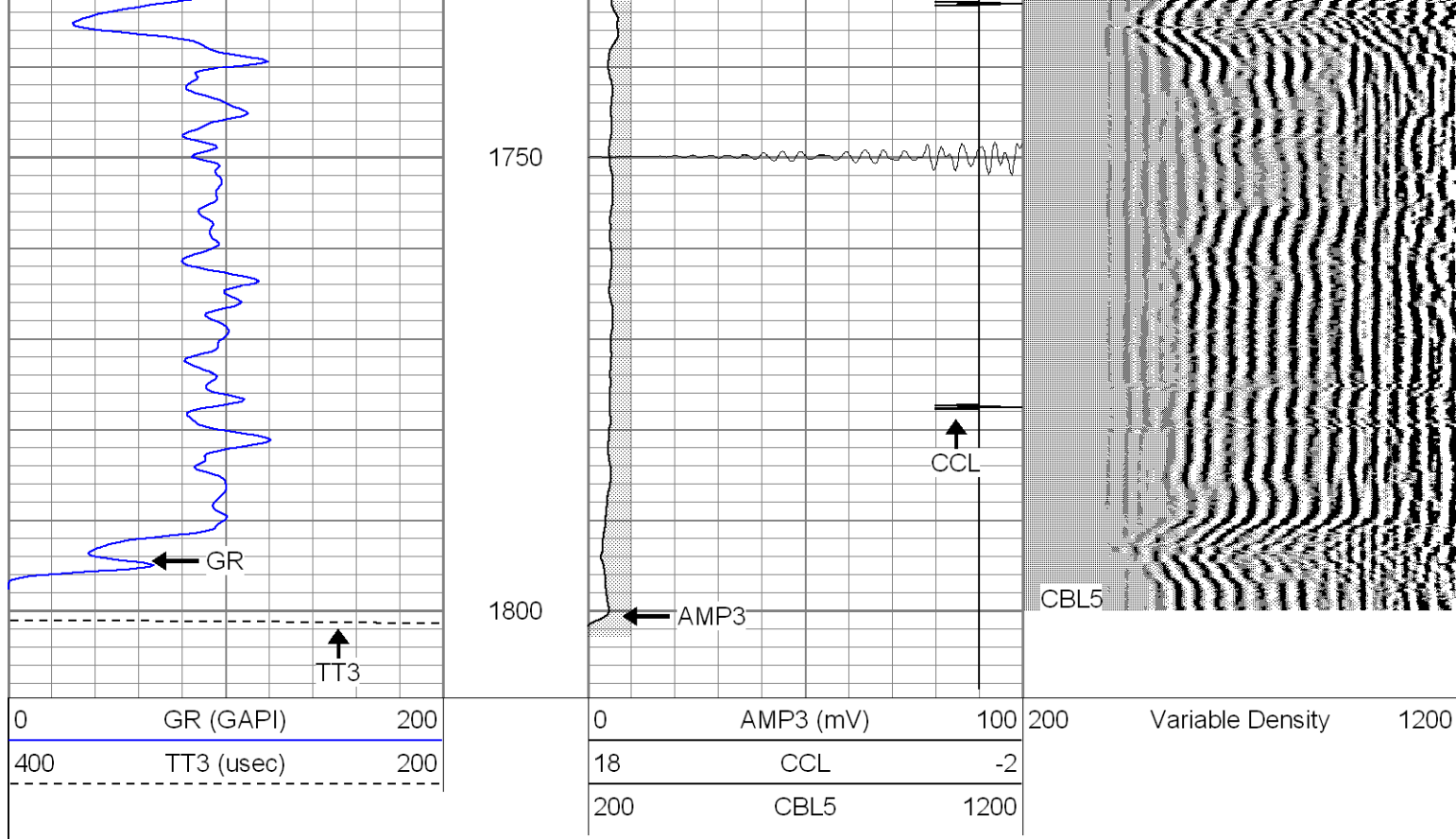
1400

1450

1500





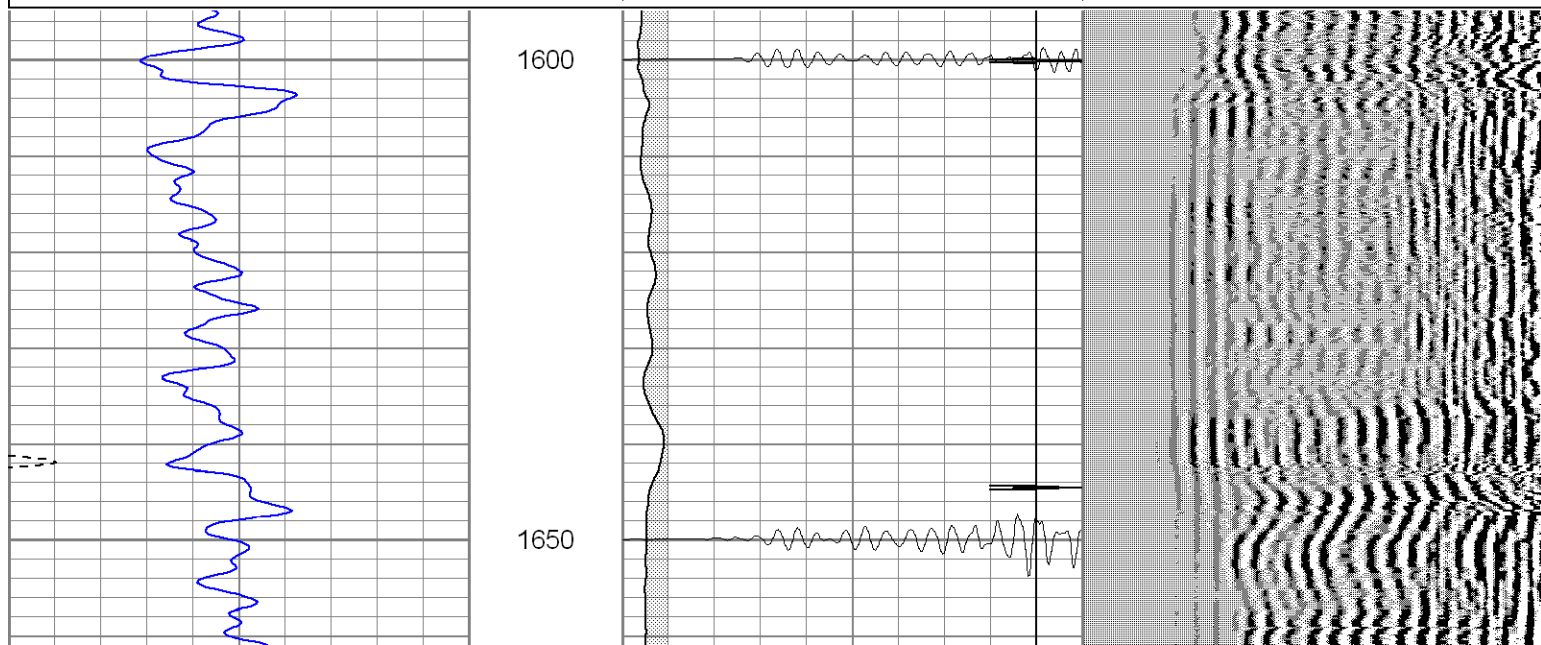
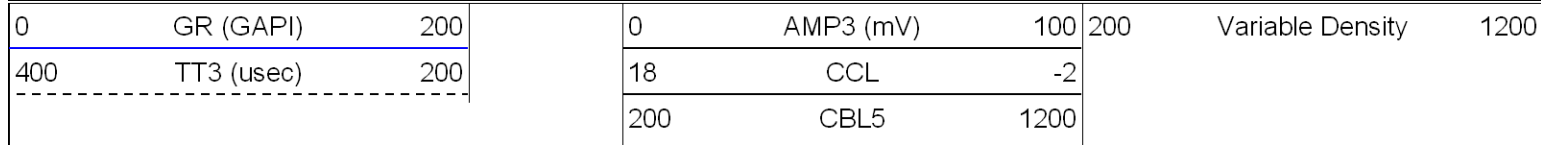


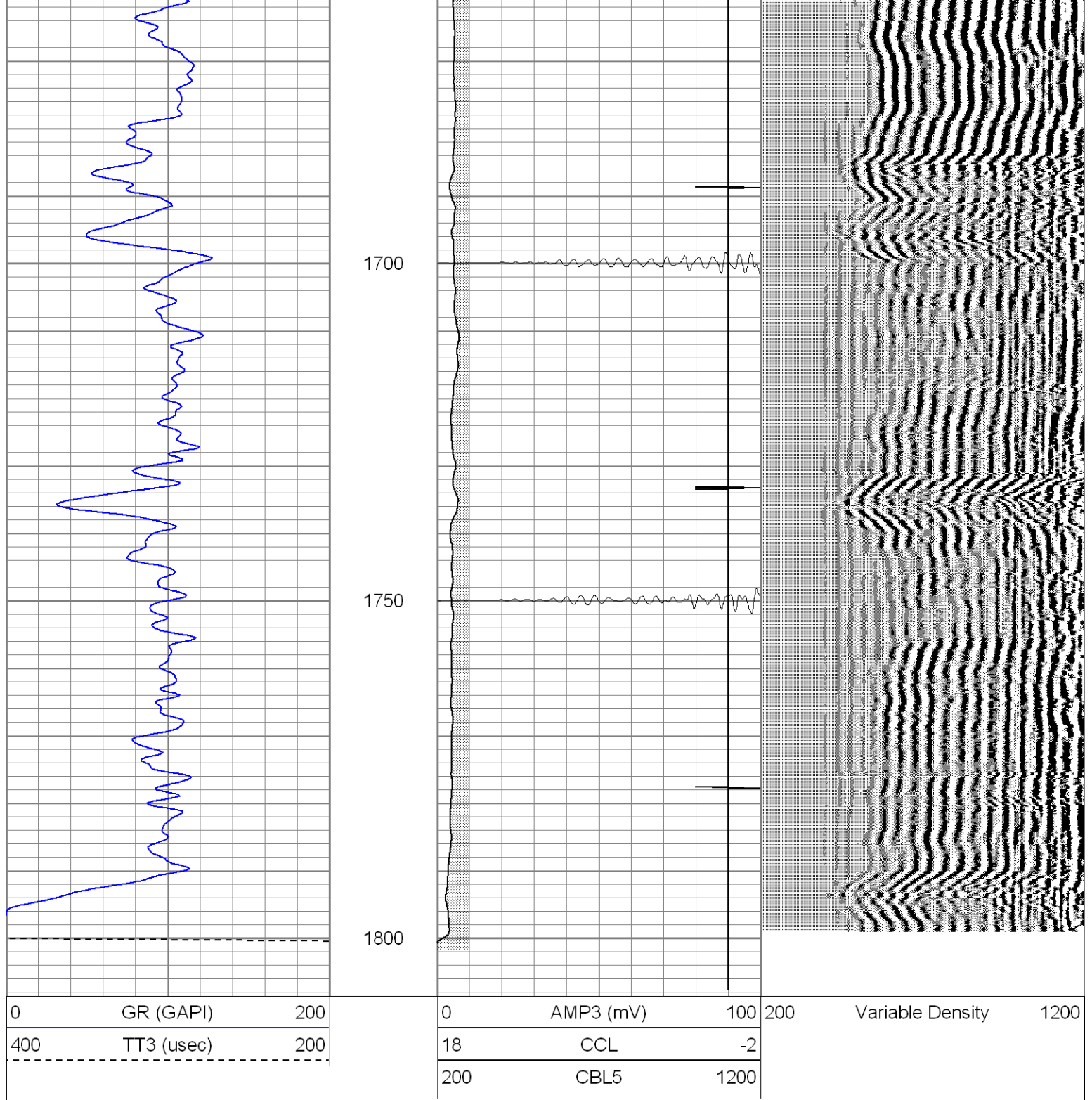
SUPERIOR

Black Lick, Pa.
Mercer, Pa.
Wooster, Oh.
Cleveland, Ok.
Trinidad, Co.

Repeat Section

Database File: xtoac3507-090507b.db
Dataset Pathname: pass1
Presentation Format: cblrt
Dataset Creation: Thu Sep 06 10:38:16 2007 by Log Open-Cased 061129
Charted by: Depth in Feet scaled 1:240





Calibration Report

Database File: xtohr2514-090607b.db
Dataset Pathname: pass5
Dataset Creation: Tue Sep 04 15:44:23 2007 by Log Open-Cased 061129

Cement Bond Log Calibration Report

Serial Number: Titan5
Tool Model: T5
Performed: Thu Sep 06 10:34:40 2007

Depth: 0 ft
Casing Diameter: 0 in

3' Spacing

5' Spacing

Gamma Ray Calibration Report		
Serial Number:	Titan5	
Tool Model:	T5	
Performed:	Tue Sep 04 15:44:27 2007	
Calibrator Value:	1.0	GAPI
Background Reading:	0.0	cps
Calibrator Reading:	1.0	cps
Sensitivity:	1.0000	GAPI/cps

Sensor	Offset (ft)	Schematic	Description	Len (ft)	OD (in)	W/t (lb)	
GR	13.64		None	0.75	1.50	5.00	
			GR-T5 (Titan5)	2.52	2.44	25.00	
WVF5	9.49						
WVF3	8.49			CBL-T5 (Titan5)	7.23	2.25	110.00
				X	3.00	1.69	25.00
CCL	0.83		CCL-T5 (Titan5) Long	2.15	2.75	15.00	
Dataset: xtoac3507-090507b.db: field/well/run1/pass2 Total Length: 15.66 ft Total Weight: 180.00 lb O.D. 2.75 in							