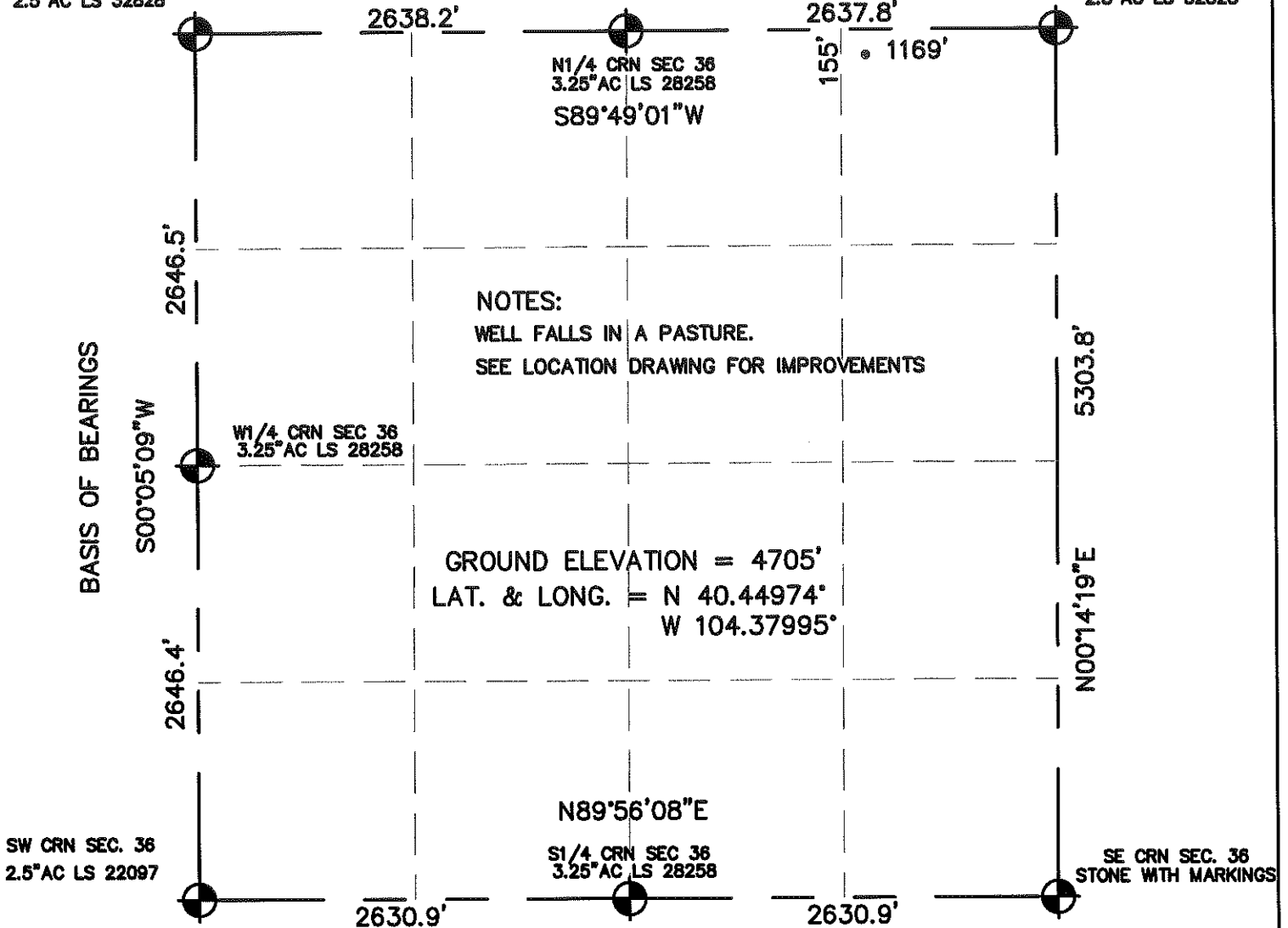


WELL LOCATION CERTIFICATE

NW CRN SEC 36
2.5°AC LS 32828

SECTION 36, TOWNSHIP 6 NORTH, RANGE 63 WEST, 6TH P.M.

NE CRN SEC 36
2.5°AC LS 32828



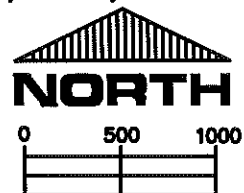
NOTES:
WELL FALLS IN A PASTURE.
SEE LOCATION DRAWING FOR IMPROVEMENTS

GROUND ELEVATION = 4705'
LAT. & LONG. = N 40.44974°
W 104.37995°

I HEREBY STATE TO PETROLEUM DEV. CORP. THAT THIS WELL LOCATION CERTIFICATE FOR THE WELL WELLS RANCH 36R IS LOCATED 155' FNL & 1169' FEL, SEC. 36, T6N, R63W, 6PM.

LEGEND

- = FOUND MONUMENT
- = PROPOSED WELL
- = IMPROVEMENTS (AS LABELED)



SCALE 1" = 1000'

ELEVATION SOURCE = USGS 7.5' QUAD.MAP CONTOURS
NGVD 1929 DATUM.

LAT. & LONG. ARE DIFFERENTIALLY CORRECTED (NAD'83)
USING (DGPS) WITH (PDOP) VALUES LESS THAN SIX (6).

SHOWN DISTANCES ARE FIELD MEASURED - EXTERIOR SECTION LINES
ARE DRAWN TO SCALE (BEST APPROX. OR FOUND MONUMENT).

DISTANCES TO WELL SHOWN PERPENDICULAR
TO SECTION LINES.

THOMAS G. CARLSON, PLS 24657
HORSESHOE SURVEYING, LLC

THIS IS NOT A MONUMENTED BOUNDARY SURVEY, IT IS ONLY A
DRAWING INTENDED TO DEPICT THE WELL LOCATION TO SECTION LINES.

PREPARED BY:		HORSESHOE SURVEYING, LLC PO BOX 150458 LAKEWOOD, CO 80215 (720)872-0196		WELL NAME: WELLS RANCH 36R	
DRAWING DATE: 12-22-09				LOCATION: WELD COUNTY, CO NE1/4, SEC. 36, T6N, R63W, 6TH P.M.	
FIELD DATE: 12-22-09	BY: TGC	CHKD:		JOB NO.	SHEET NO. 1 OF 1

