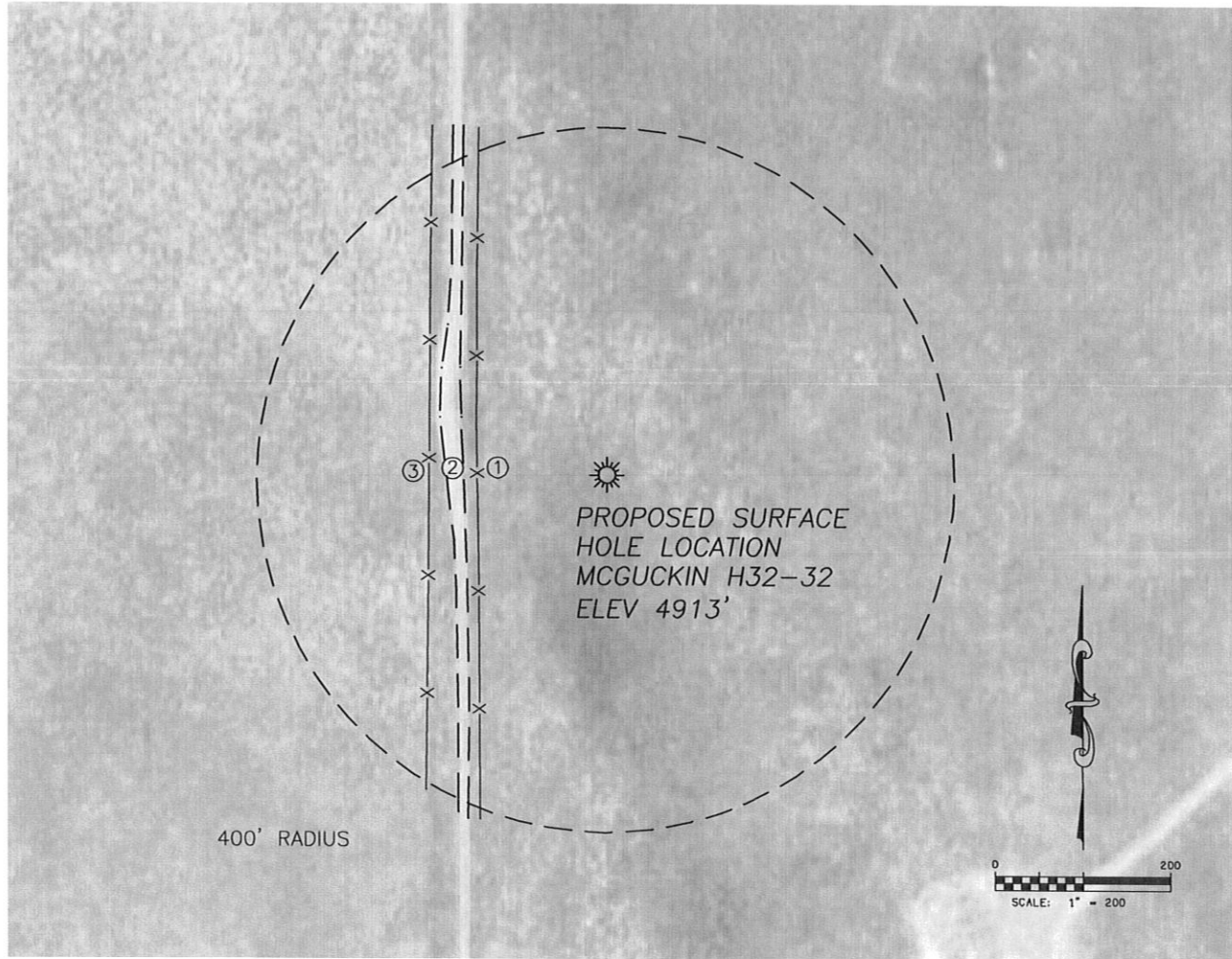


LOCATION DRAWING

DALEY LAND SURVEYING, INC. PARKER, CO. 80134 303 953 9841

VISIBLE IMPROVEMENTS SKETCH
MCGUCKIN H32-32

SECTION 32, TOWNSHIP 3 NORTH, RANGE 65 WEST OF THE 6TH PRINCIPAL MERIDIAN



①
FENCELINE
149' W

②
EDGE ROAD
165' W
184' W

③
FENCELINE
204' W