

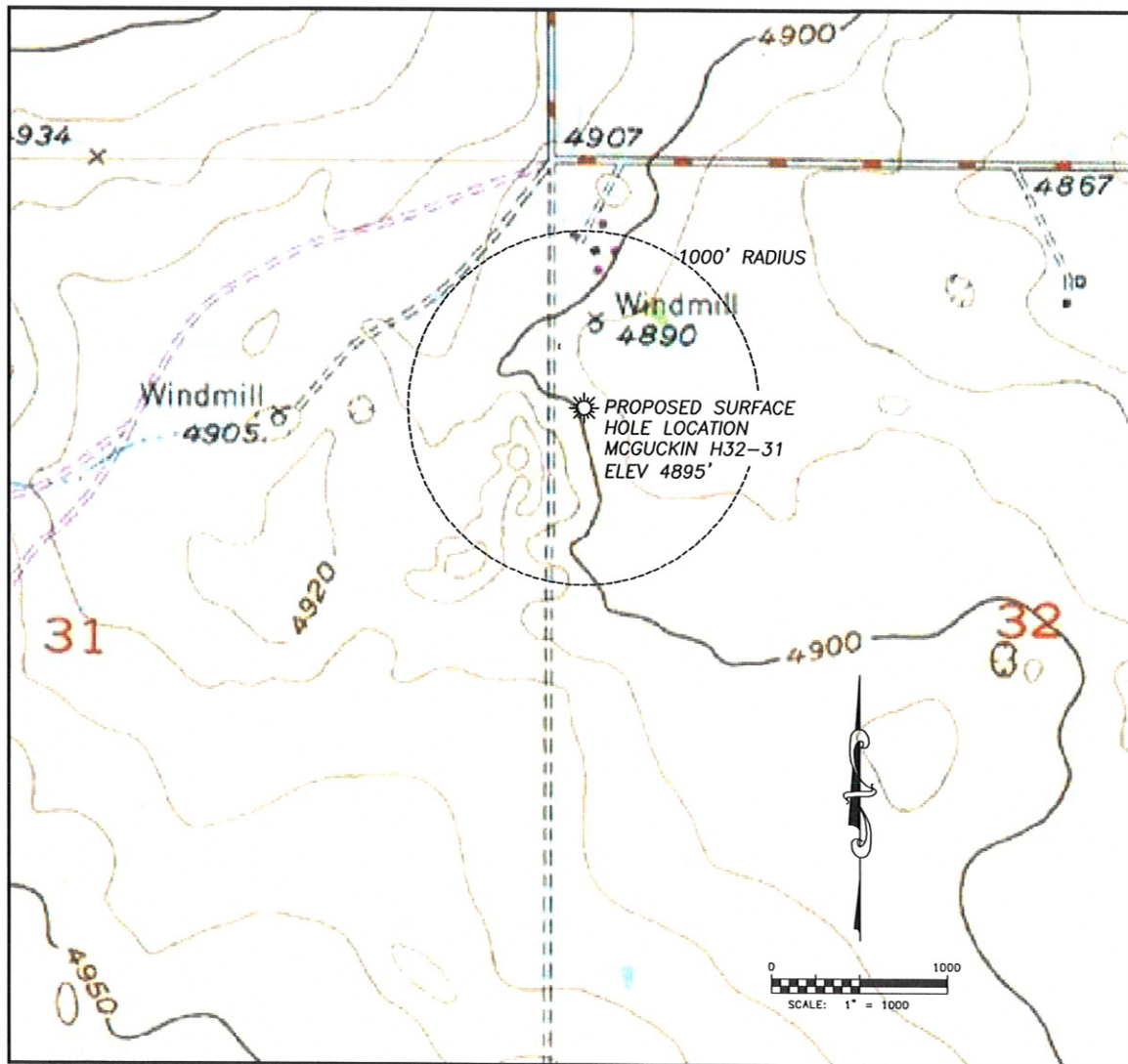
DALEY LAND SURVEYING, INC.

PARKER, CO. 80134

303 953 9841

## HYDROLOGY MAP MCGUCKIN H32-31

SECTION 32, TOWNSHIP 3 NORTH, RANGE 65 WEST OF THE 6TH PRINCIPAL MERIDIAN



NO VISIBLE SURFACE WATER WITHIN 1000' OF PROPOSED WELL LOCATION