

EOG RESOURCES, INC.
RANDALL CREEK #04-32H
LOCATED IN WELD COUNTY, COLORADO
SECTION 32, T12N, R62W, 6th P.M.



PHOTO: VIEW OF LOCATION STAKE

CAMERA ANGLE: WESTERLY

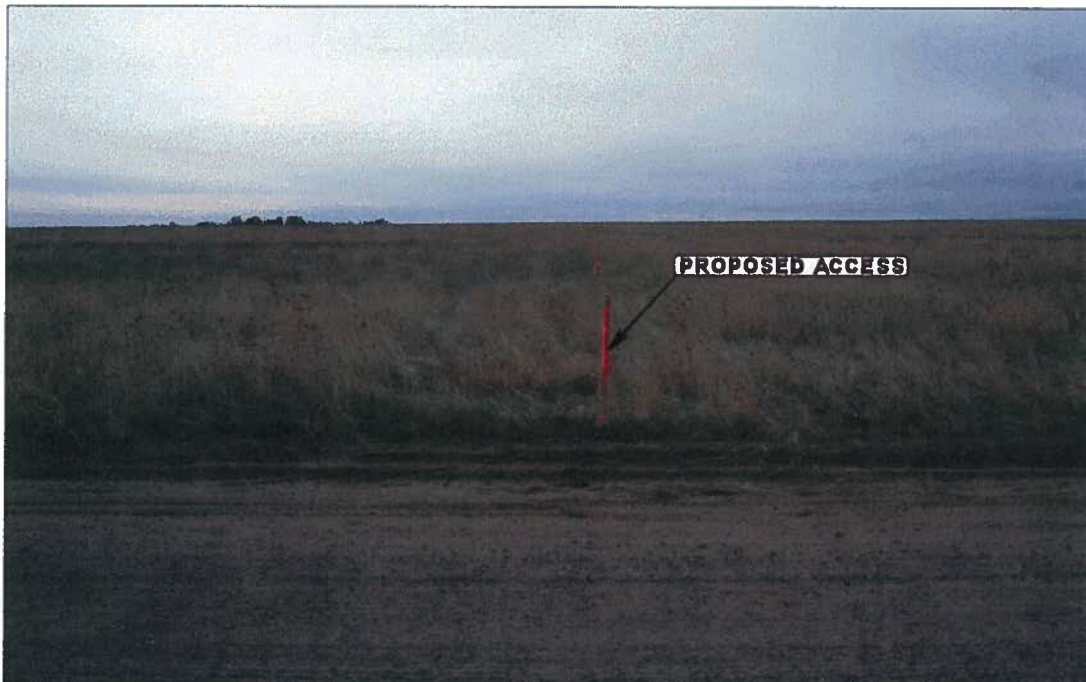


PHOTO: VIEW FROM BEGINNING OF PROPOSED ACCESS

CAMERA ANGLE: SOUTHERLY



UELS

Uintah Engineering & Land Surveying

85 South 200 East Vernal, Utah 84078
435-789-1017 FAX (435) 789-1813

LOCATION PHOTOS

01 21 10
MONTH DAY YEAR

TAKEN BY: A.F.

DRAWN BY: J.H.

REVISED: 00-00-00

PHOTO
P 1

EOG RESOURCES, INC.
RANDALL CREEK #04-32H
LOCATED IN WELD COUNTY, COLORADO
SECTION 32, T12N, R62W, 6th P.M.



PHOTO: VIEW OF LOCATION STAKE

CAMERA ANGLE: SOUTHERLY



PHOTO: VIEW OF LOCATION STAKE

CAMERA ANGLE: WESTERLY



UELS

Uintah Engineering & Land Surveying
85 South 200 East Vernal, Utah 84078
435-789-1017 FAX (435) 789-1813

LOCATION PHOTOS

01 21 10
MONTH DAY YEAR

TAKEN BY: A.F.

DRAWN BY: J.H.

REVISED: 00-00-00

PHOTO
P 3