

T12N, R62W, 6th P.M.

EOG RESOURCES, INC.

Well location, RANDALL CREEK #04-32H, located as shown in the NE 1/4 NE 1/4 of Section 32, T12N, R62W, 6th P.M., Weld County, Colorado.

BASIS OF ELEVATION

SPOT ELEVATION AT THE NORTHEAST CORNER OF SECTION 1, T11N, R63W, 6th P.M. TAKEN FROM THE HEREFORD, QUADRANGLE, COLORADO, WELD COUNTY, 7.5 MINUTE QUAD (TOPOGRAPHIC MAP) PUBLISHED BY THE UNITED STATES DEPARTMENT OF THE INTERIOR, GEOLOGICAL SURVEY. SAID ELEVATION IS MARKED AS BEING 5352 FEET.

BASIS OF BEARINGS

BASIS OF BEARINGS IS A G.P.S. OBSERVATION.

2010 UELS Alum.
Cap RLS #17492
Lat: 40.973386°
Long: 104.334847°

N89°49'06"E - 5030.73' (Meas.)

RANDALL CREEK #04-32H
Elev. Ungraded Ground = 5346'

N00°35'50"E - 5316.85' (Meas.)

S00°05'20"E - 5265.33' (Meas.)

32

NOTE:
SEE ADDENDUM TO LEGAL PLAT FOR
EXISTING IMPROVEMENTS WITHIN 400'
OF THE PROPOSED DISTURBANCE.

Bottom Hole

2010 UELS Alum.
Cap
Lat: 40.958936°
Long: 104.334825°

T12N

S89°14'40"W - 5094.75' (Meas.)

T11N

2009 Alum. Cap
RLS #17492
Lat: 40.958758°
Long: 104.353264°

LEGEND:

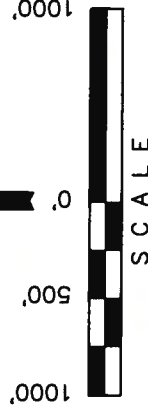
└─ = 90° SYMBOL

● = PROPOSED WELL HEAD.

▲ = SECTION CORNERS LOCATED.

PDOP = 1.4

NAD 83 (TARGET BOTTOM HOLE)	NAD 83 (SURFACE LOCATION)
LATITUDE = 40°57'38.02" (40.960561)	LATITUDE = 40°58'18.20" (40.972000)
LONGITUDE = 104°20'13.20" (104.337000)	LONGITUDE = 104°20'21.08" (104.339189)
NAD 27 (TARGET BOTTOM HOLE)	NAD 27 (SURFACE LOCATION)
LATITUDE = 40°57'38.08" (40.960578)	LATITUDE = 40°58'18.26" (40.972017)
LONGITUDE = 104°20'11.36" (104.336489)	LONGITUDE = 104°20'19.24" (104.338678)
STATE PLANE NAD 83	STATE PLANE NAD 83
N: 1594893.336 E: 3321219.837	N: 1599052.930 E: 3320580.743
STATE PLANE NAD 27	STATE PLANE NAD 27
N: 594890.872 E: 2321369.214	N: 599050.493 E: 2320710.153



CERTIFICATE

THIS IS TO CERTIFY THAT THE ABOVE PLAT WAS PREPARED FROM FIELD NOTES OF ACTUAL SURVEYS MADE BY ME OR UNDER MY SUPERVISION AND THAT THE SAME ARE TRUE AND CORRECT TO THE BEST OF MY KNOWLEDGE AND BELIEF.

REGISTERED LAND SURVEYOR
REGISTRATION NO. 817492
STATE OF COLORADO

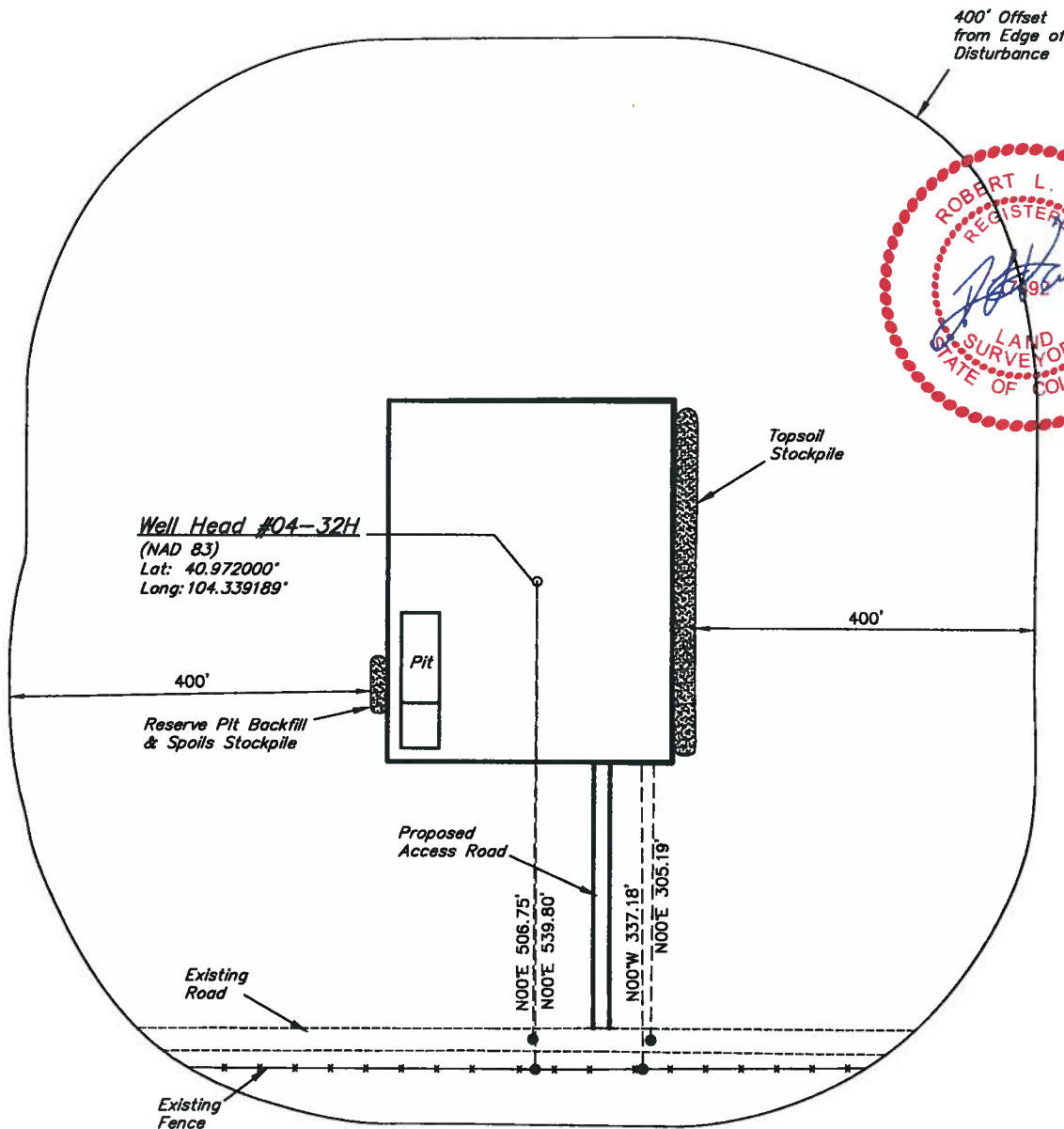
UNTAH ENGINEERING & LAND SURVEYING

85 SOUTH 200 EAST - VERNAL, UTAH 84078

(435) 789-1017

SCALE 1" = 1000'	DATE SURVEYED: 01-14-10	DATE DRAWN: 01-19-10
PARTY A.F. J.J. C.H.	REFERENCES G.L.O. PLAT	
WEATHER COLD	FILE	
		EOG RESOURCES, INC.

400' Offset from Edge of Disturbance



UINTAH ENGINEERING & LAND SURVEYING
85 So. 200 East * Vernal, Utah 84078 * (435) 789-1017