

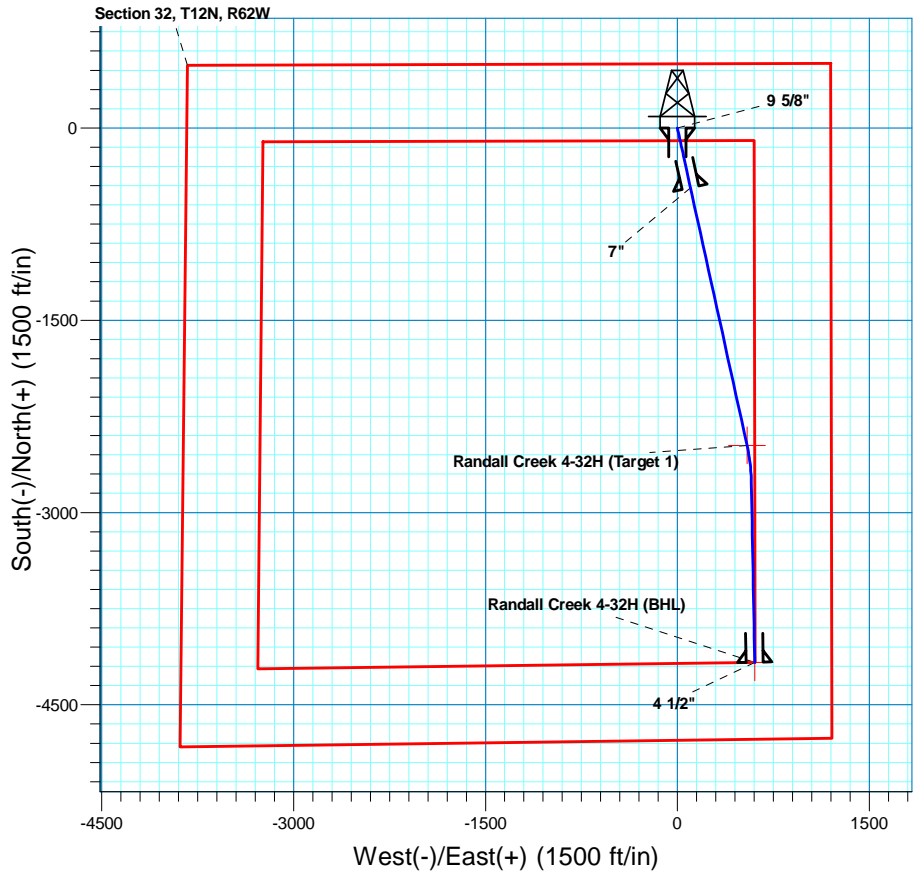
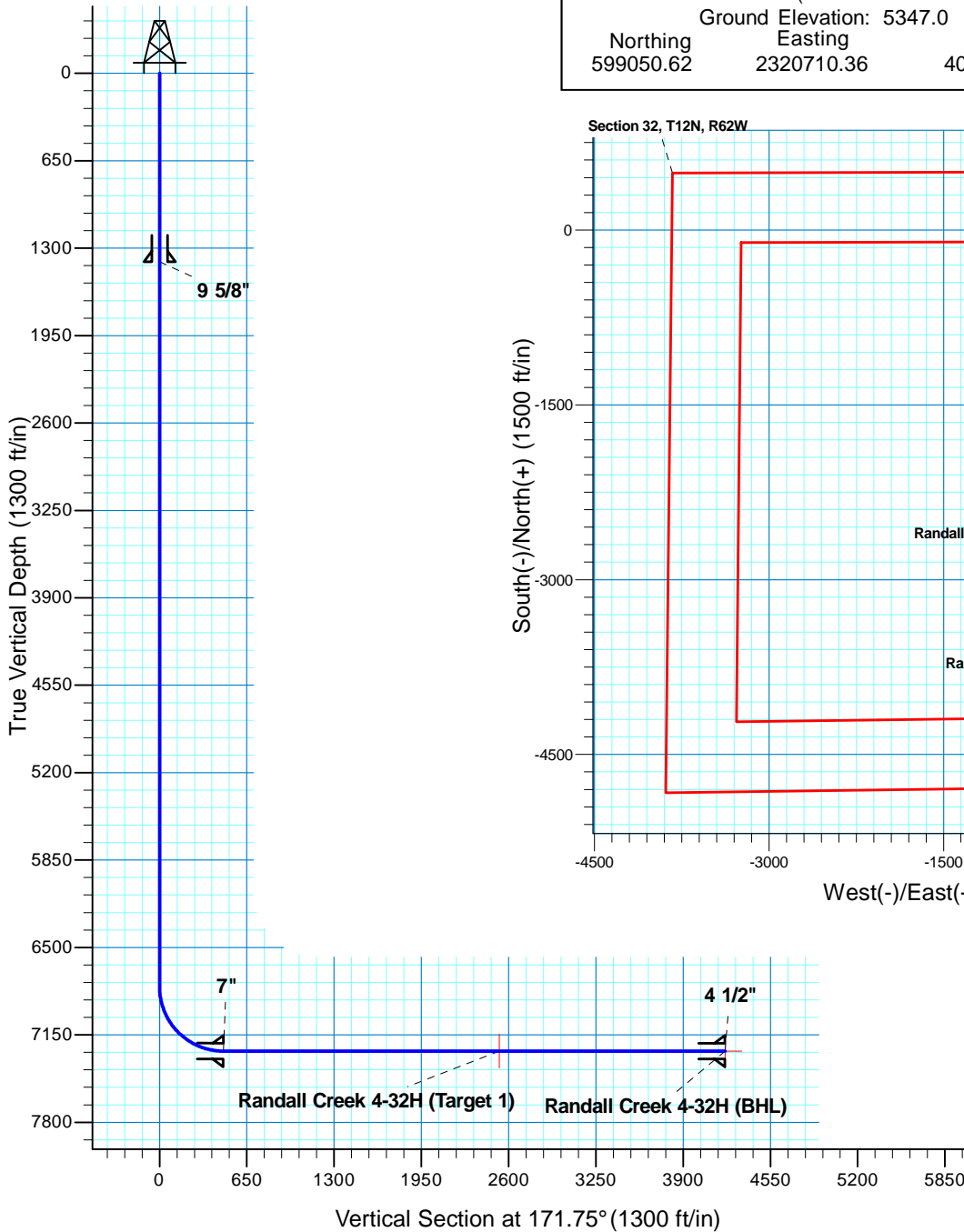
# Randall Creek 4-32H

Section 32 T12N R62W

Weld County, CO



Surface Location			
NAD 1927 (NADCON CONUS) Colorado North 501			
Ground Elevation: 5347.0 RIG @ 5372.0ft (TBD)			
Northing	Easting	Latitude	Longitude
599050.62	2320710.36	40° 58' 19.261 N	104° 20' 19.241 W



**T M**  
 Azimuths to True North  
 Magnetic North: 8.83°  
 Magnetic Field  
 Strength: 53633.9snT  
 Dip Angle: 67.64°  
 Date: 1/26/2010  
 Model: IGRF200510

Project: DJ - Hereford Ranch  
 Site: Randall Creek 04-32H  
 Well: Randall Creek 4-32H  
 Plan: APD

## SECTION DETAILS

Sec	MD	Inc	Azi	TVD	+N/-S	+E/-W	DLeg	TFace	VSec	Target
1	0.0	0.00	0.00	0.0	0.0	0.0	0.00	0.00	0.0	
2	6793.5	0.00	0.00	6793.5	0.0	0.0	0.00	0.00	0.0	
3	7543.5	90.00	167.60	7271.0	-466.3	102.5	12.00	167.60	476.2	
4	9601.7	90.00	167.60	7271.0	-2476.5	544.5	0.00	0.00	2529.0	Randall Creek 4-32H (Target 1)
5	9884.3	90.00	178.90	7271.0	-2756.7	577.6	4.00	90.00	2811.1	Randall Creek 4-32H (BHL)
6	11295.7	90.00	178.90	7271.0	-4167.8	604.6	0.00	0.00	4211.5	Randall Creek 4-32H (BHL)

## TARGET DETAILS

Name	TVD	+N/-S	+E/-W	Northing	Easting	Latitude	Longitude	Shape
Randall Creek 4-32H (BHL)	7271.0	-4167.8	604.6	594891.05	2321369.53	40° 57' 38.081 N	104° 20' 11.360 W	Point
Randall Creek 4-32H (Target 1)	7271.0	-2476.5	544.5	596581.46	2321287.24	40° 57' 54.792 N	104° 20' 12.144 W	Po int