

# BLANCO

Geological Services LLC

Scale 1:240 (5"=100') Imperial

Well Name: Sadie 14-5  
Location: SW/SW Sec 5 T32S R65W  
Licence Number: 05-071-09226-00  
Spud Date: 05/13/2007  
Surface Coordinates: 795' FSL & 839' FWL

Las Animas County  
Region: Purgatoire River  
Drilling Completed: 05/15/2007

## Bottom Hole Coordinates:

Ground Elevation (ft): 7496'      K.B. Elevation (ft): 7500'  
Logged Interval (ft): 730'      To: 2050'      Total Depth (ft): 2050'  
Formation: Raton / Vermejo / Trinidad  
Type of Drilling Fluid: Air/Mist

Printed by MUD.LOG from WellSight Systems 1-800-447-1534 [www.WellSight.com](http://www.WellSight.com)

## OPERATOR

Company: Pioneer Natural Resources USA Inc  
Address: 1401 17th Street, Suite 1200  
Denver, CO 80202

## GEOLOGIST

Name: Ali Kaleli  
Company: Blanco Geological Services LLC  
Address: 806 Robinson Ave  
Trinidad, CO 81082  
(719) 846-3364

## Rig


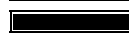


PNR #3





## Comments

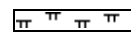

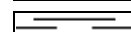
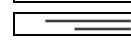
8 5/8" #24 Surface Casing set to 759.14 ft




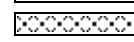
## ROCK TYPES

 Anhy  
 Bent  
 Brec  
 Cht

 Clyst  
 Coal  
 Congl  
 Dol

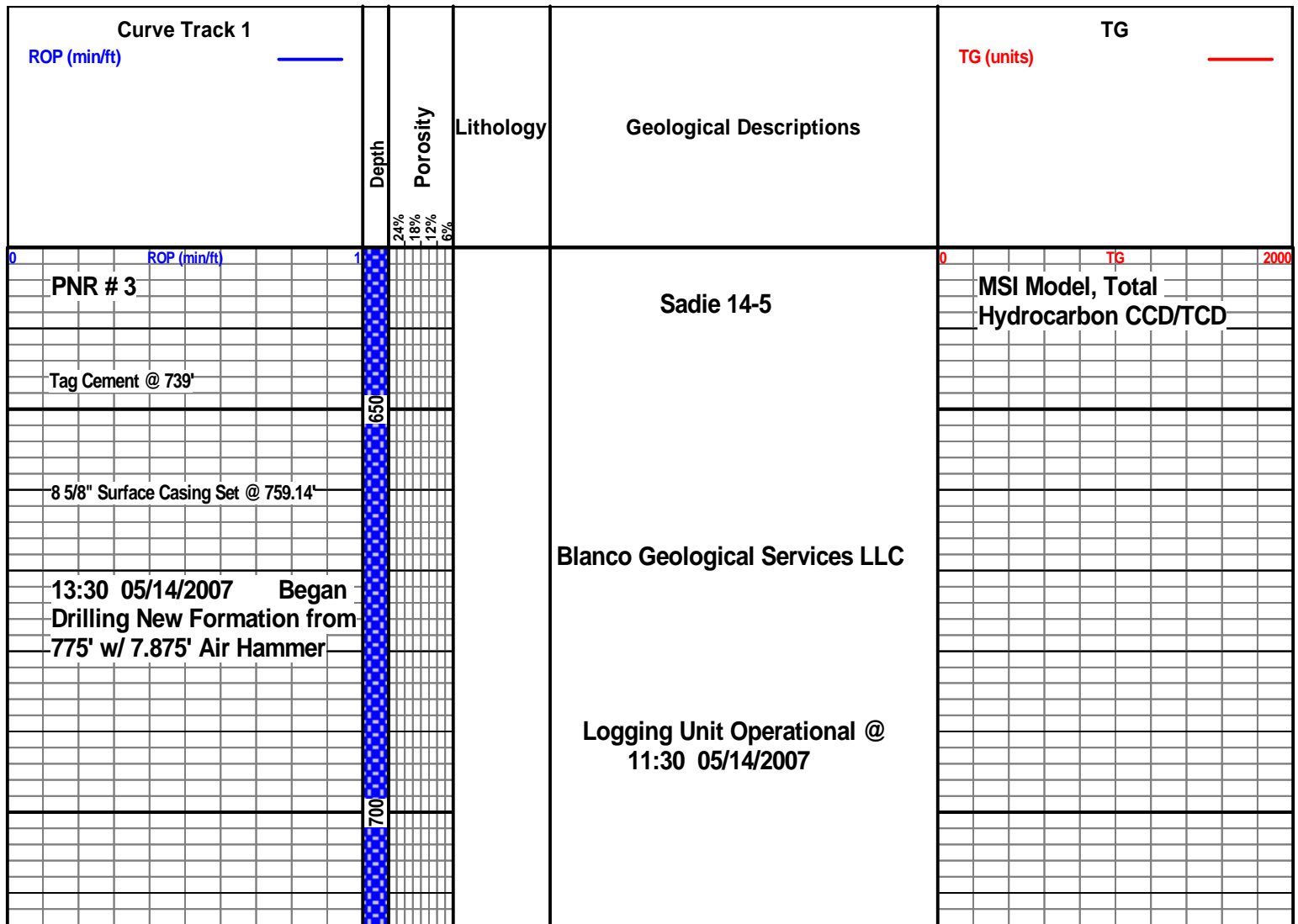
 Gyp  
 Igne  
 Lmst  
 Meta

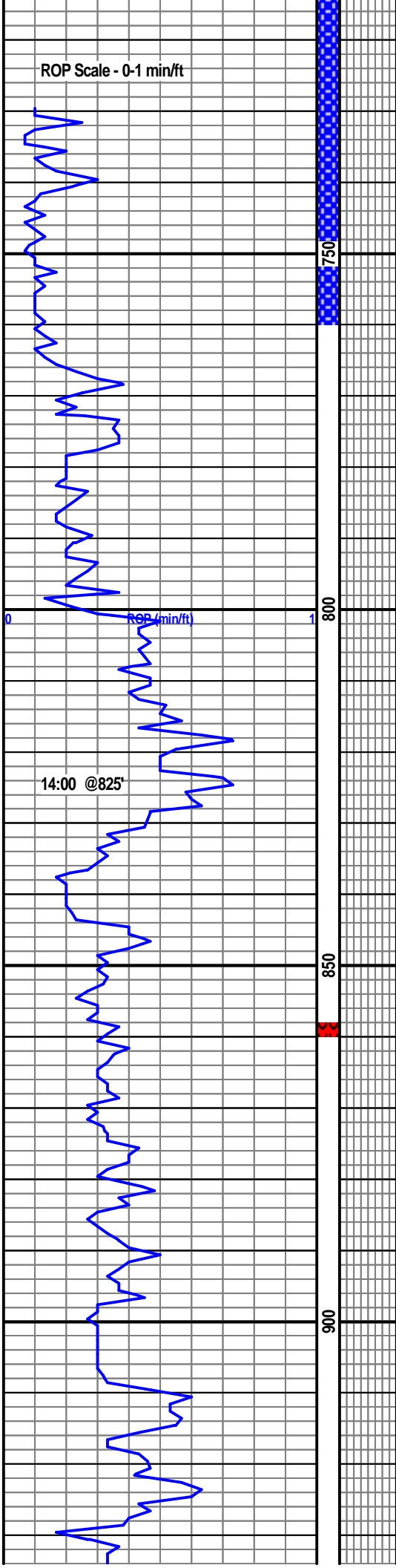
 Mrlst  
 Salt  
 Shale  
 Shcol

 Shgy  
 Sltst  
 Ss  
 Till

<b>BS</b>	<b>Boundst</b>
<b>C</b>	<b>Chalky</b>
<b>CX</b>	<b>CryxIn</b>
<b>E</b>	<b>Earthy</b>
<b>FX</b>	<b>FinexIn</b>
<b>GS</b>	<b>Grainst</b>
<b>L</b>	<b>Lithogr</b>
<b>MX</b>	<b>MicroxIn</b>
<b>MS</b>	<b>Mudst</b>
<b>PS</b>	<b>Packst</b>
<b>WS</b>	<b>Wackest</b>

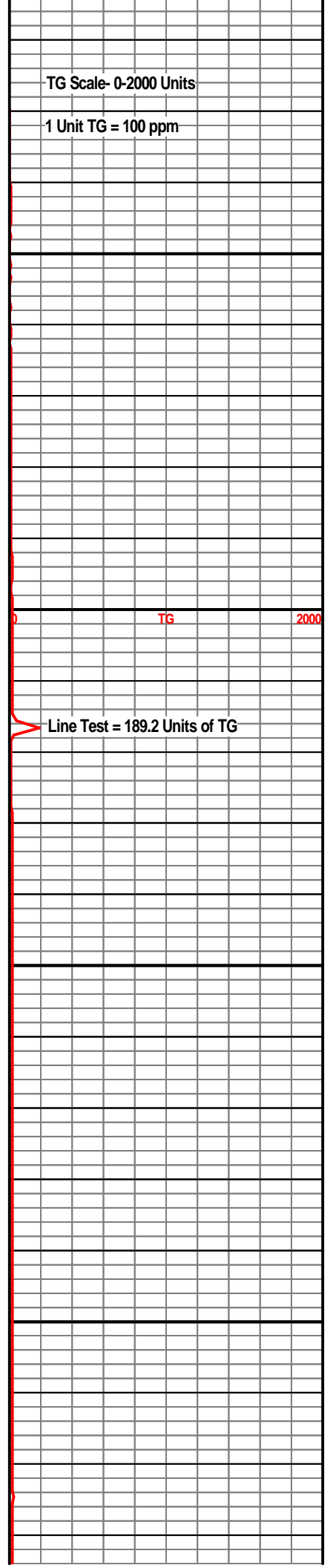
Rft  
Sidewall  
Srftcsg

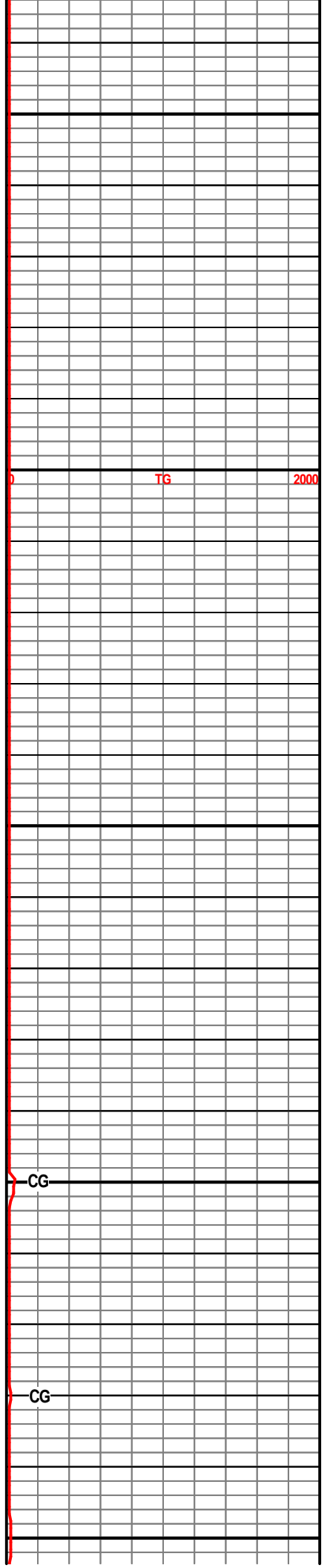
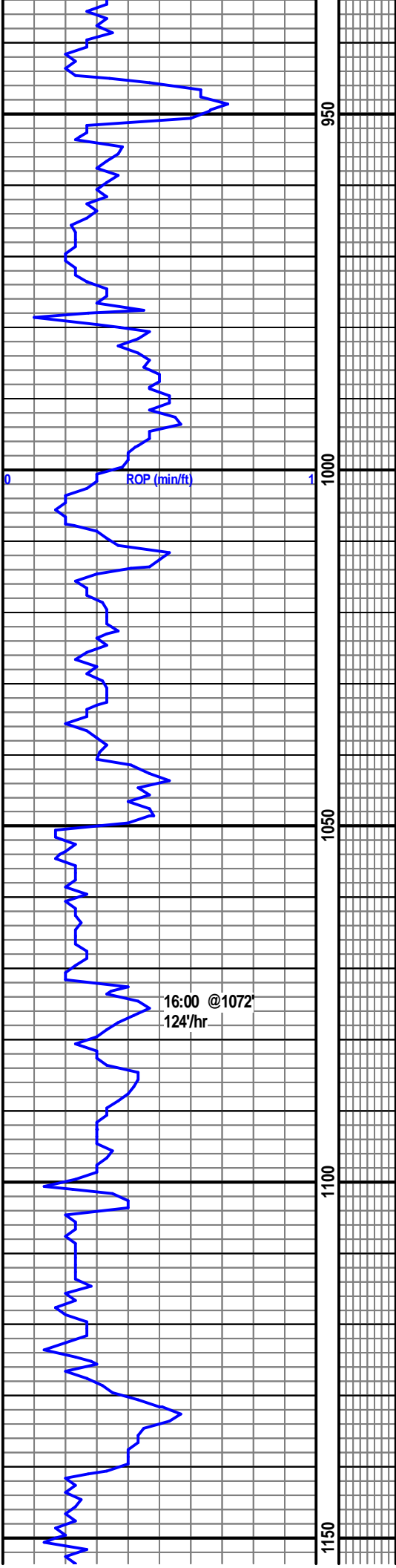


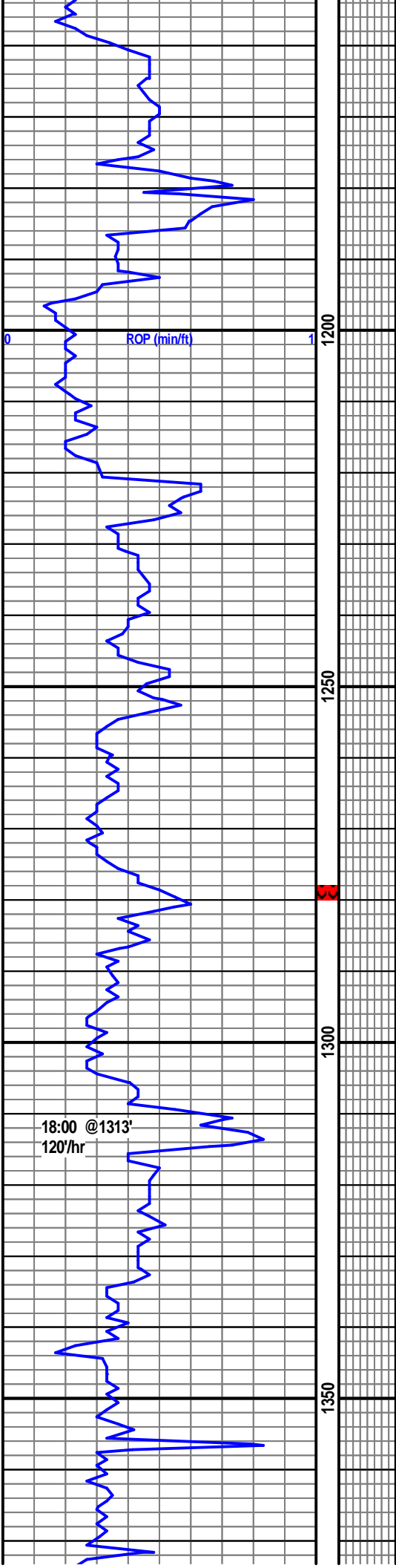


CV

Raton Formation







CV

