



SUPERIOR
Black Lick, Pa.
Mercer, Pa.
Wooster, Oh.
Cleveland, Ok.
Trinidad, Co.

CEMENT BOND LOG

Company XTO Energy Inc.
Well Apache Canyon 05-11
Field Purgatorie River
County Las Animas
State CO

Company XTO Energy Inc.

Well Apache Canyon 05-11

Field Purgatorie River

County Las Animas State CO

Location: API #: 05 071 09132 00

SEC 06 TWP 34S RGE 67W

Permanent Datum Ground Level Elevation 7490'

Log Measured From Ground Level

Drilling Measured From Ground Level

Elevation

K.B. -----

D.F. -----

G.L. 7490'

Date 7-11-07

Run Number One

Depth Driller 2110'

Depth Logger 2046'

Bottom Logged Interval 2044'

Top Log Interval Surface

Open Hole Size 7 7/8

Type Fluid Water

Density / Viscosity ///

Max. Recorded Temp. 112F

Estimated Cement Top 224'

Time Well Ready ROA

Time Logger on Bottom 3:30PM

Equipment Number T0698

Location Trinidad

Recorded By J. Sisneros

Witnessed By Mr. Terry Maxwell

Borehole Record				Tubing Record			
Run Number	Bit	From	To	Size	Weight	From	To
Casing Record							
Surface String		Size 8 5/8"		Wgt/Ft		Top	Bottom 496'
Prot. String							
Production String		5.5"					
Liner							

<<< Fold Here >>>

All interpretations are opinions based on inferences from electrical or other measurements and we cannot and do not guarantee the accuracy or correctness of any interpretation, and we shall not, except in the case of gross or willful negligence on our part, be liable or responsible for any loss, costs, damages, or expenses incurred or sustained by anyone resulting from any interpretation made by any of our officers, agents or employees. These interpretations are also subject to our general terms and conditions set out in our current Price Schedule.

Comments

Lower Bosque Entrance, first right to Alamosito Canyon, go through gate, at windmill turn right, first drive through location.



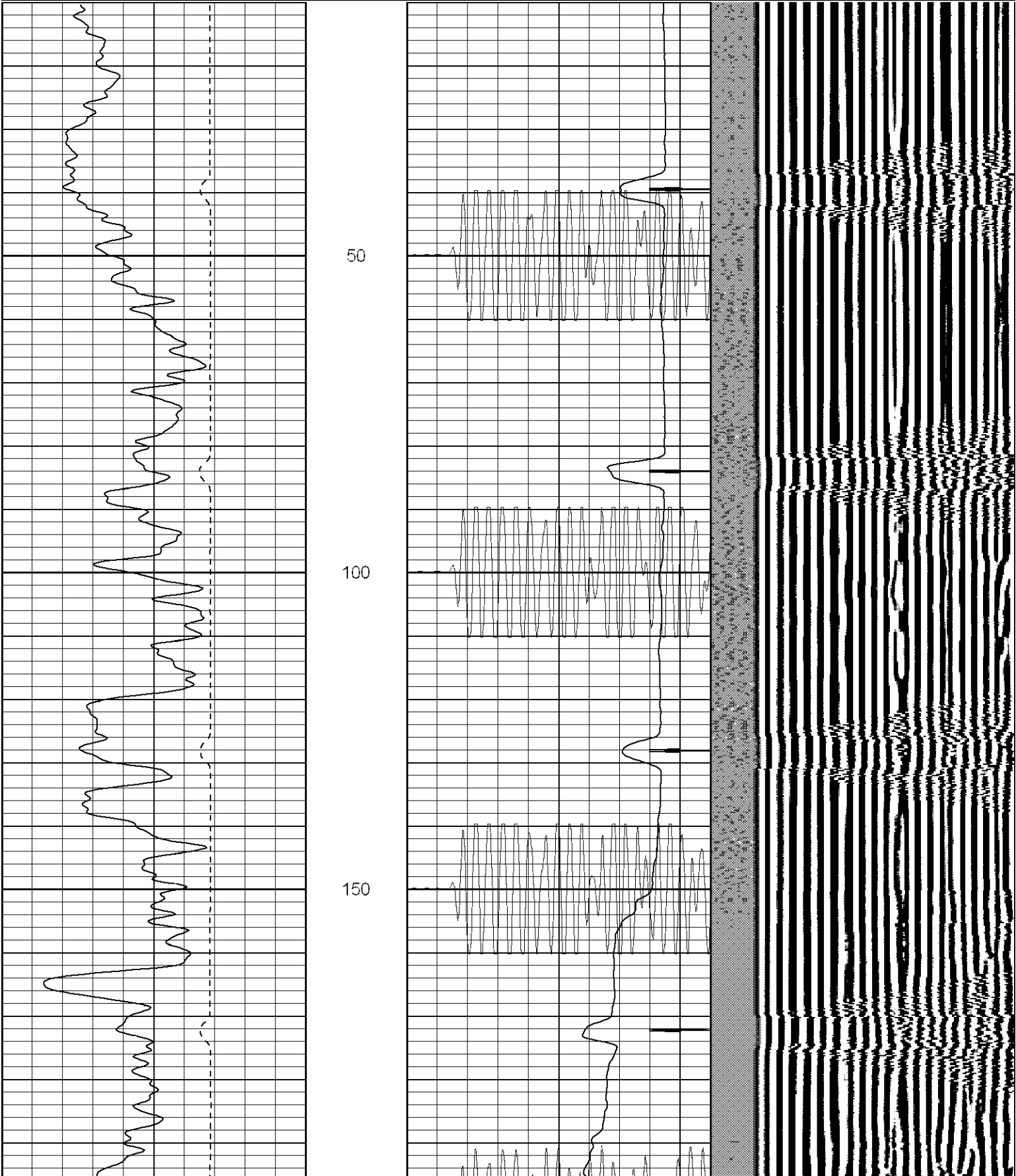
SUPERIOR

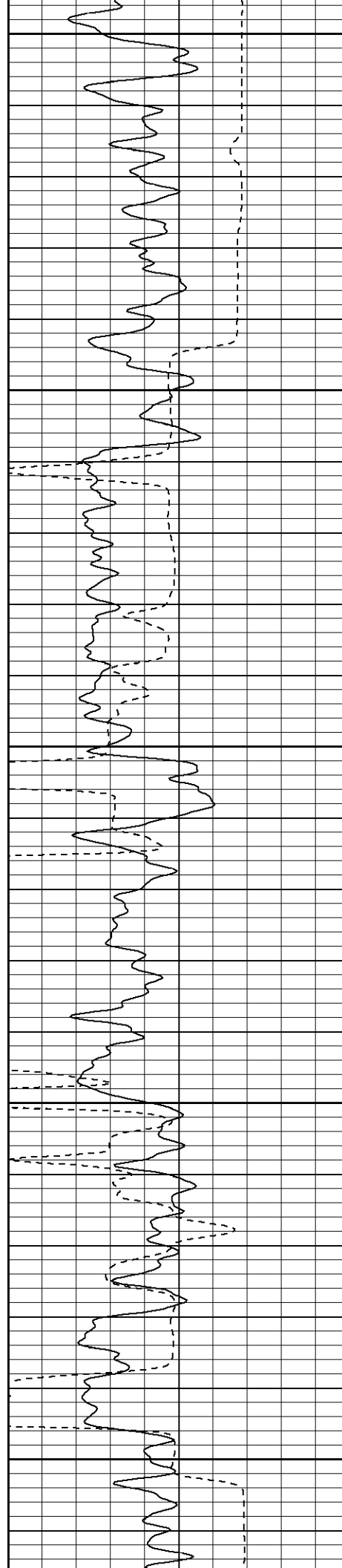
Black Lick, Pa.
Mercer, Pa.
Wooster, Oh.
Cleveland, Ok.
Trinidad, Co.

Main Pass

Database File: ac051171107b.db
Dataset Pathname: pass5.1
Presentation Format: cblrt
Dataset Creation: Wed Jul 11 16:36:23 2007 by Calc Open-Cased 070508
Charted by: Depth in Feet scaled 1:240

0	GR (GAPI)	200	0	AMP3 (mV)	100	200	Variable Density	1200
400	TT3 (usec)	200	18	CCL	-2			
-----			200	CBL5	1200			





200

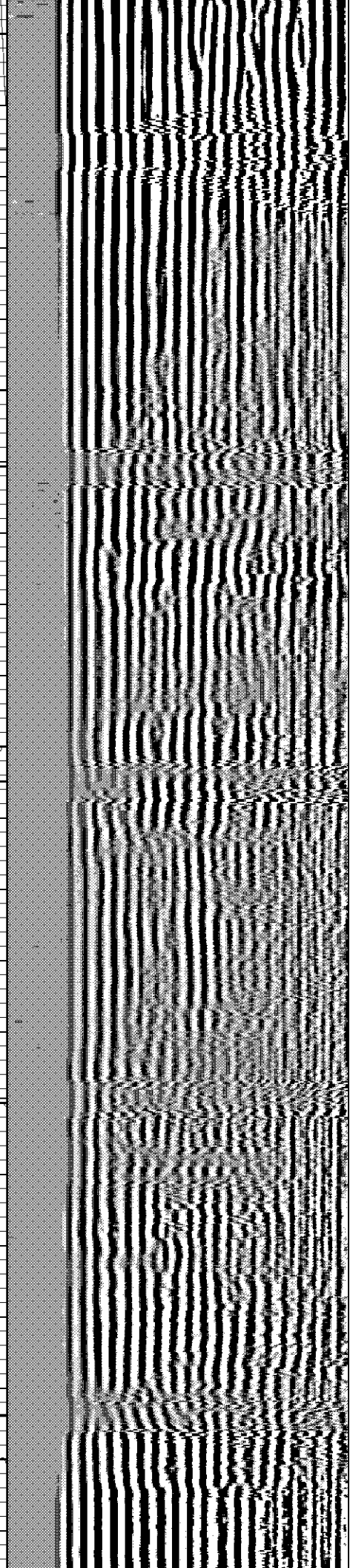
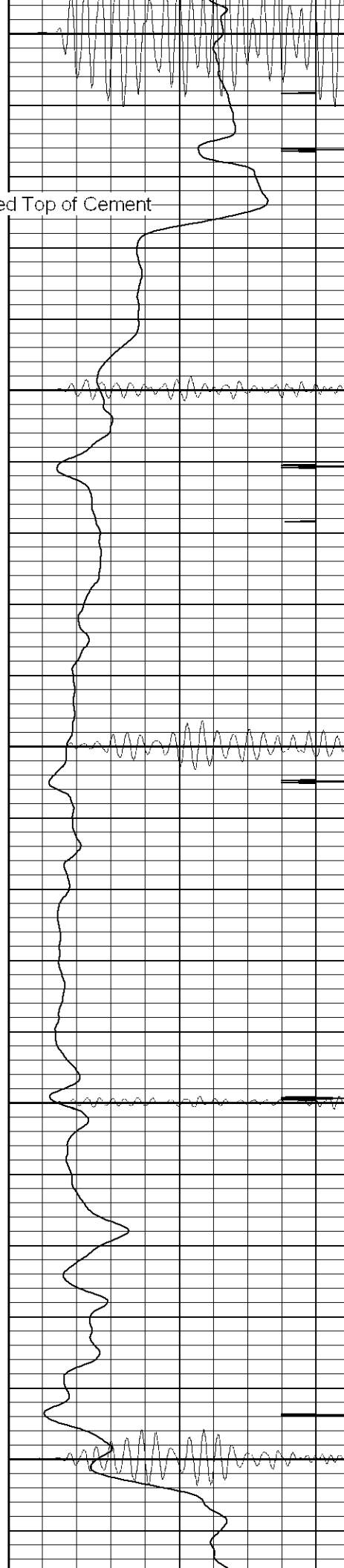
Estimated Top of Cement

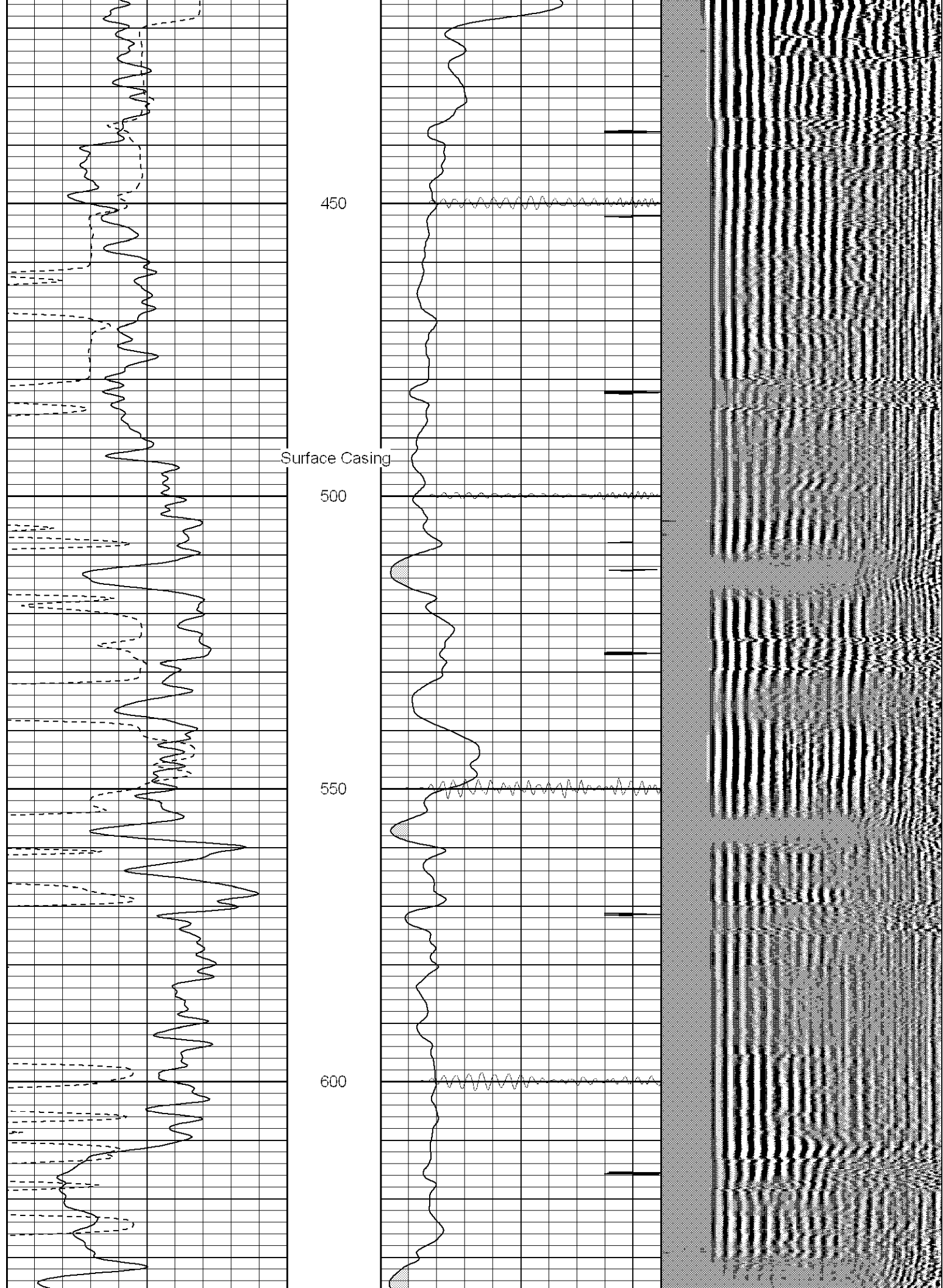
250

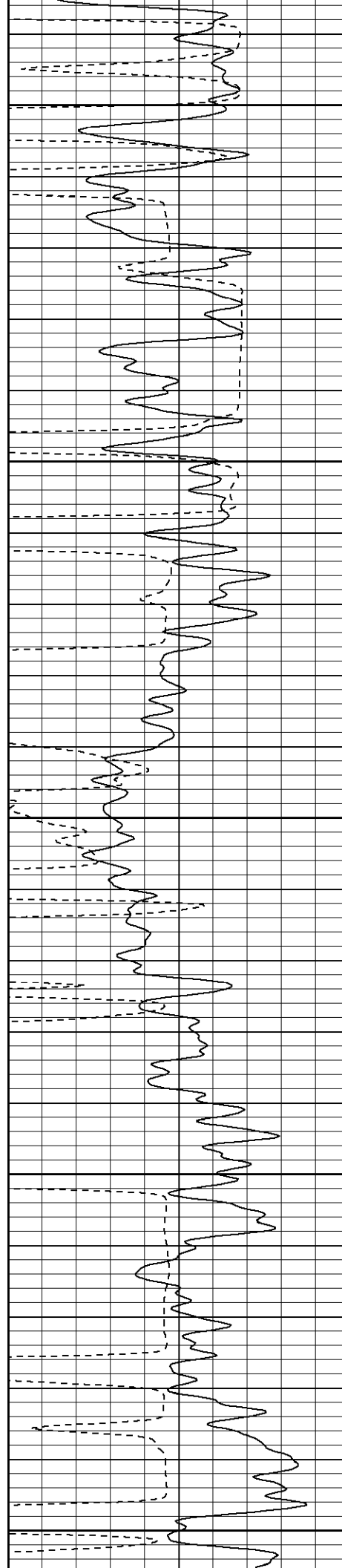
300

350

400







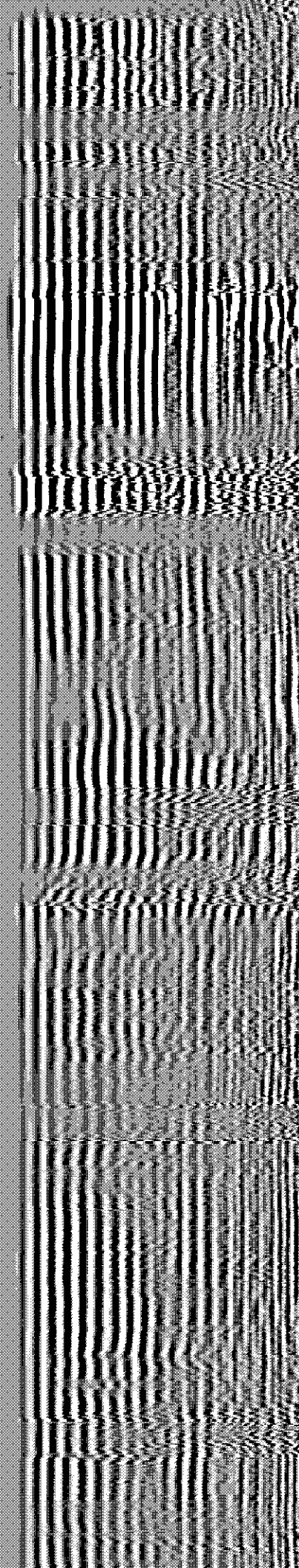
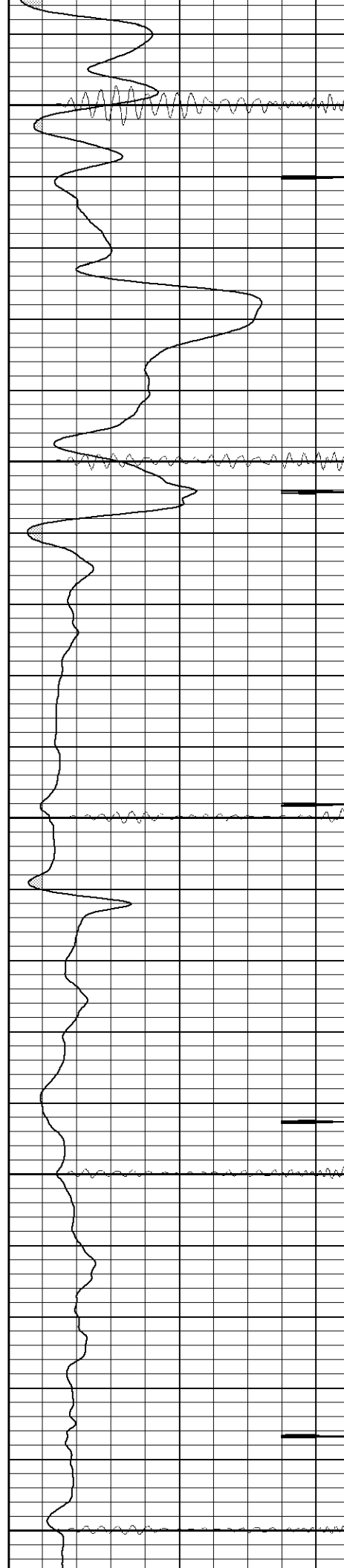
650

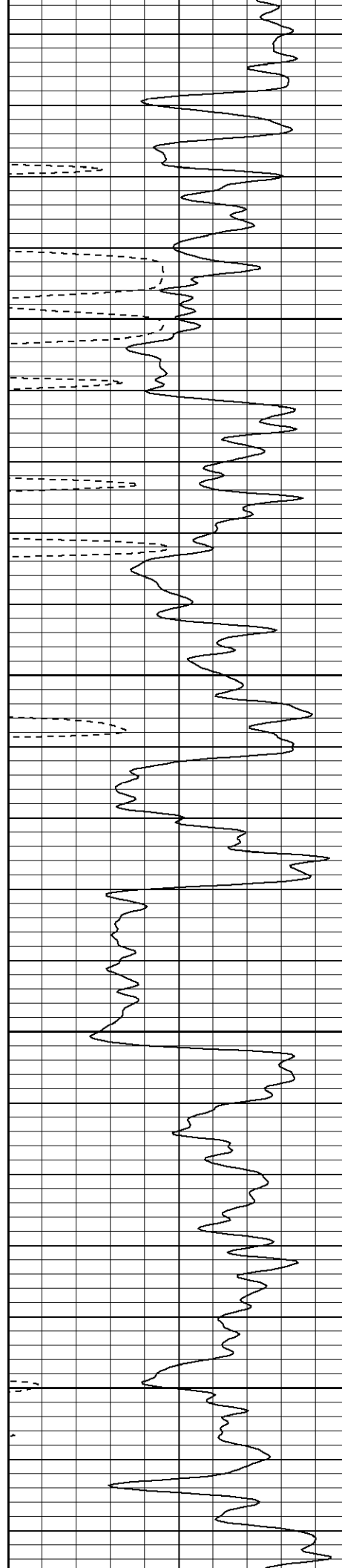
700

750

800

850



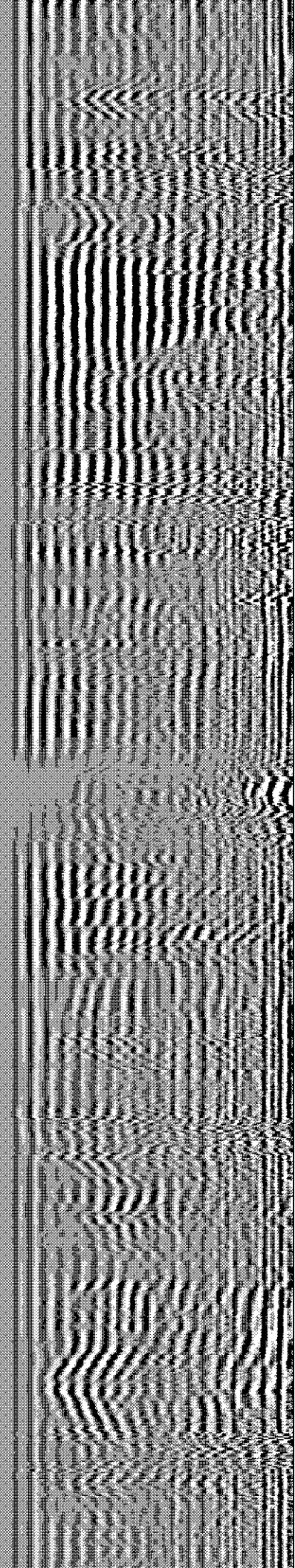
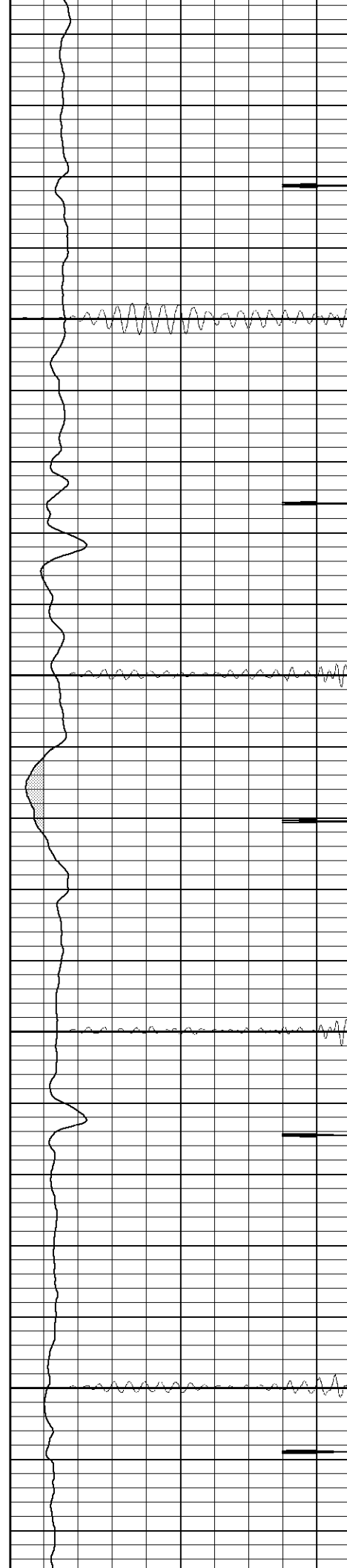


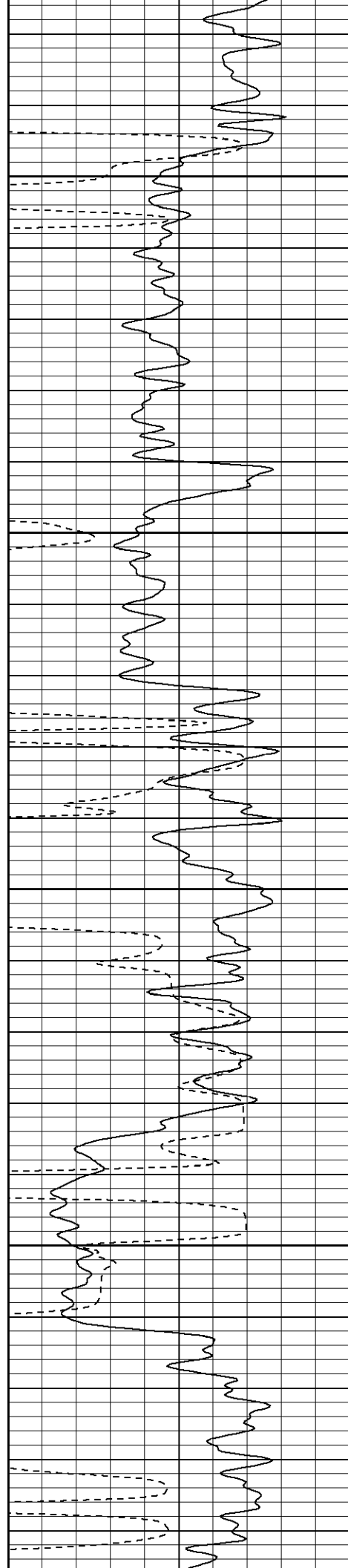
900

950

1000

1050



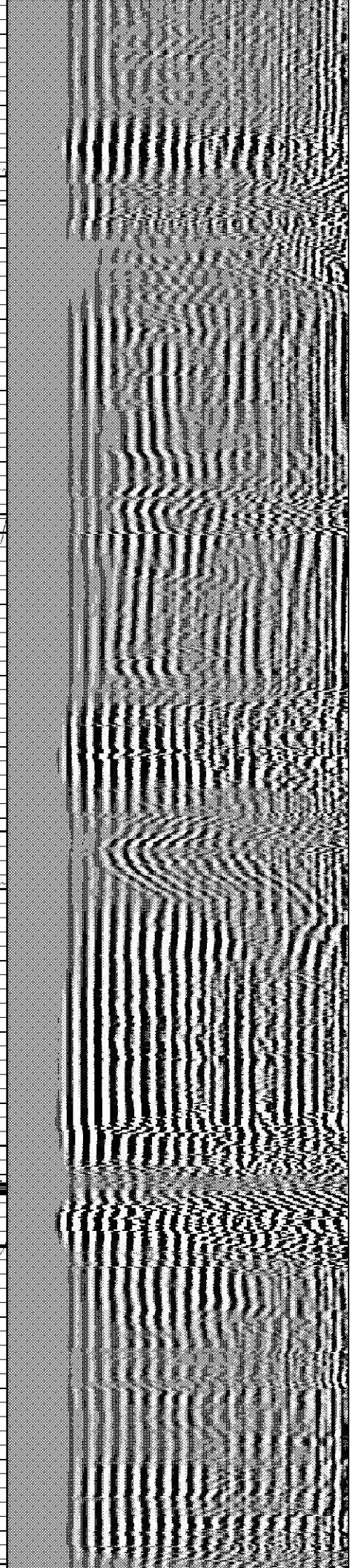


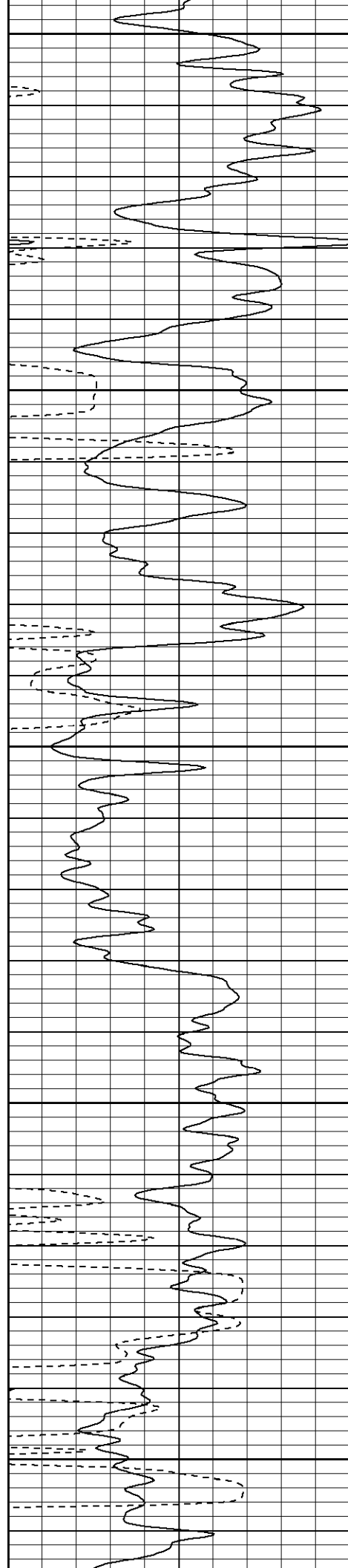
1100

1150

1200

1250





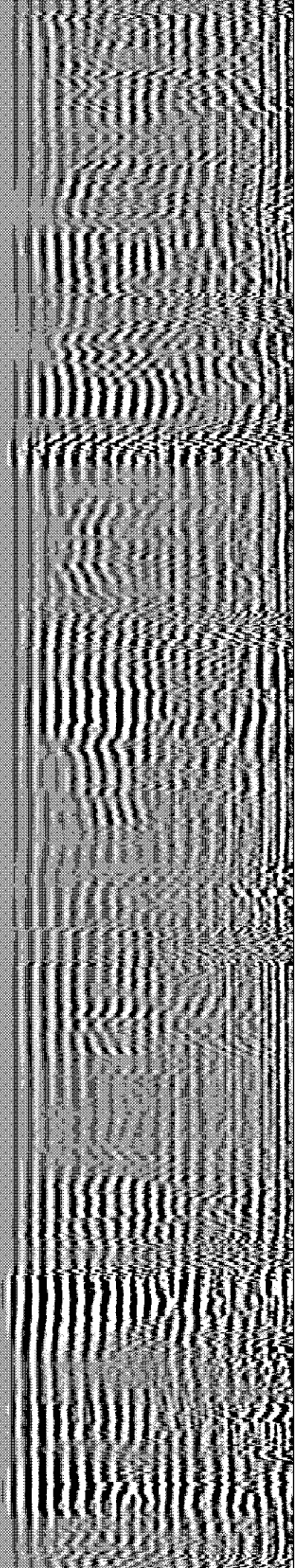
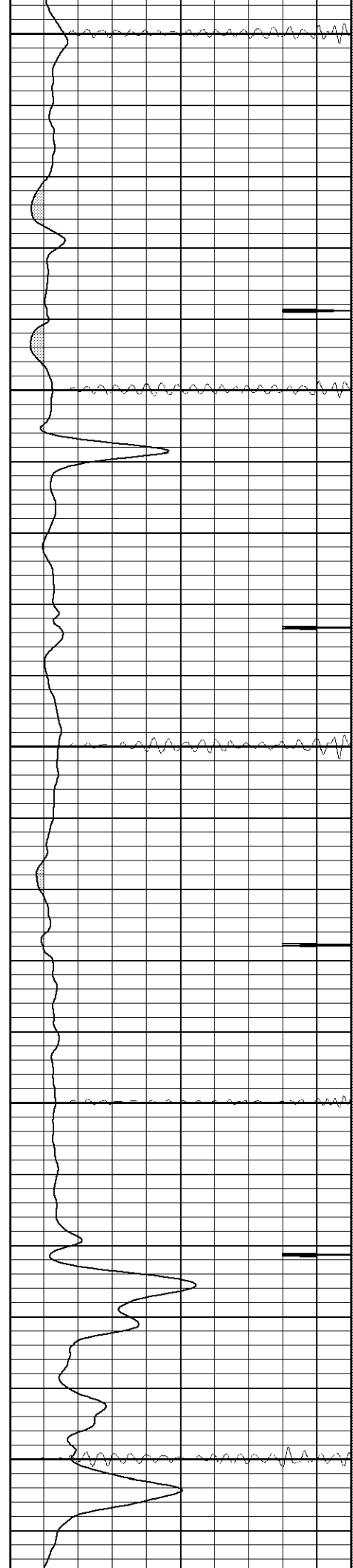
1300

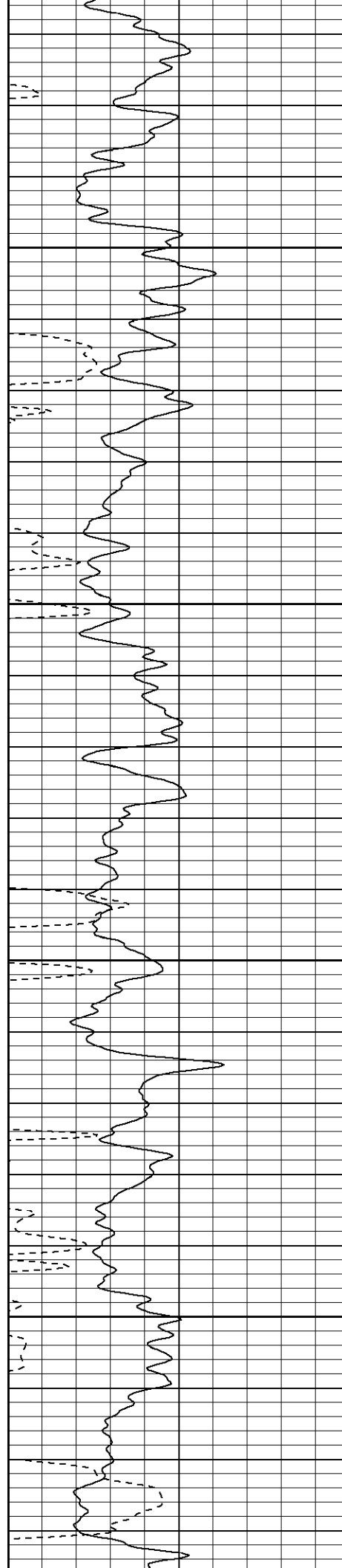
1350

1400

1450

1500



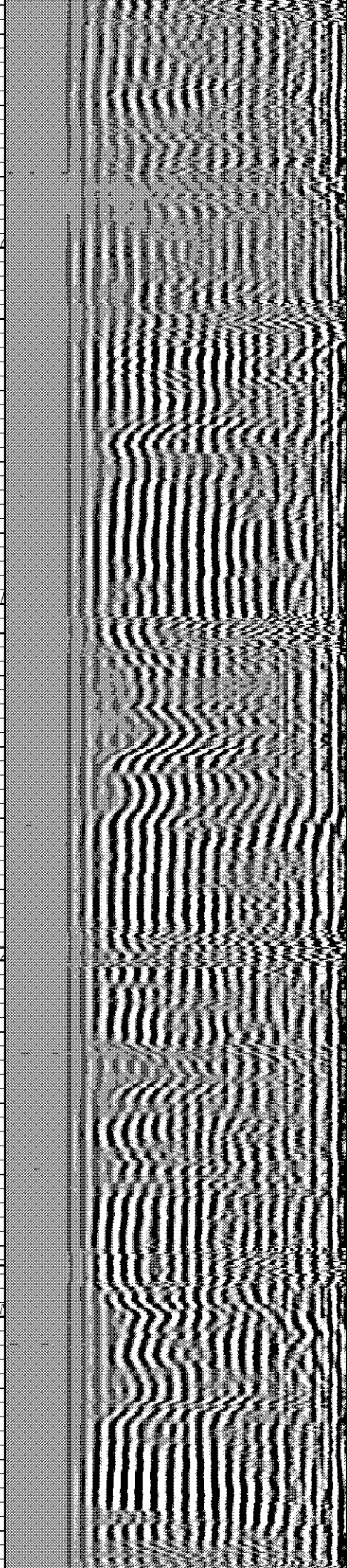
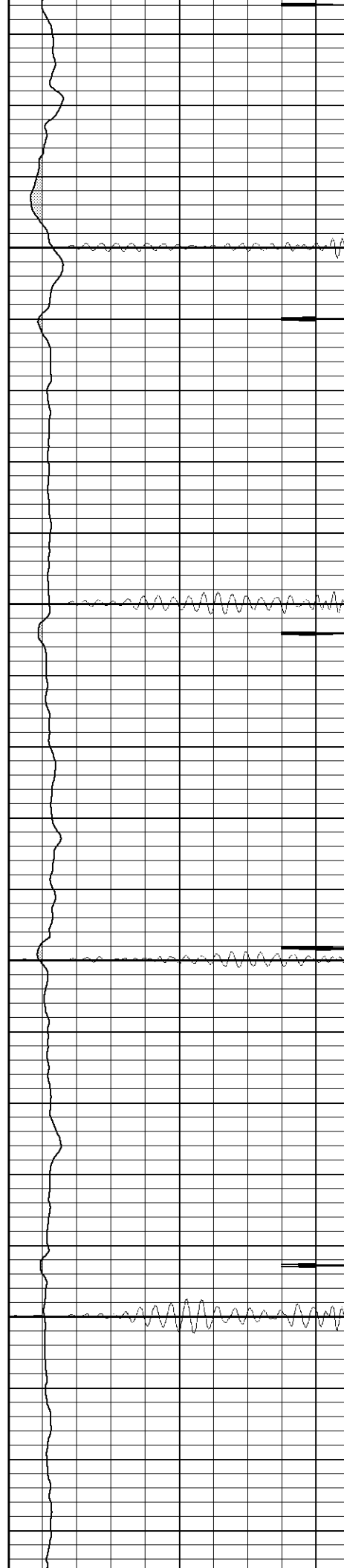


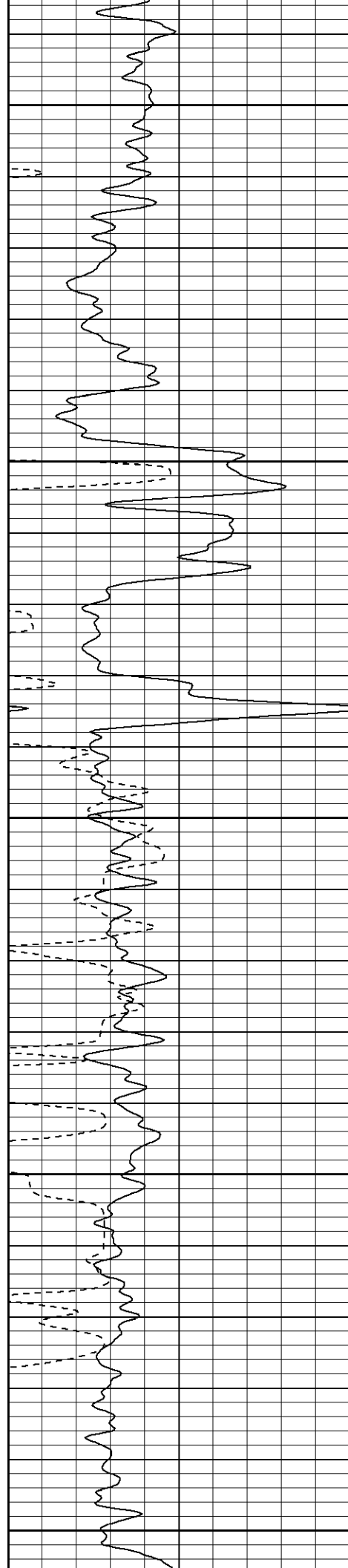
1550

1600

1650

1700





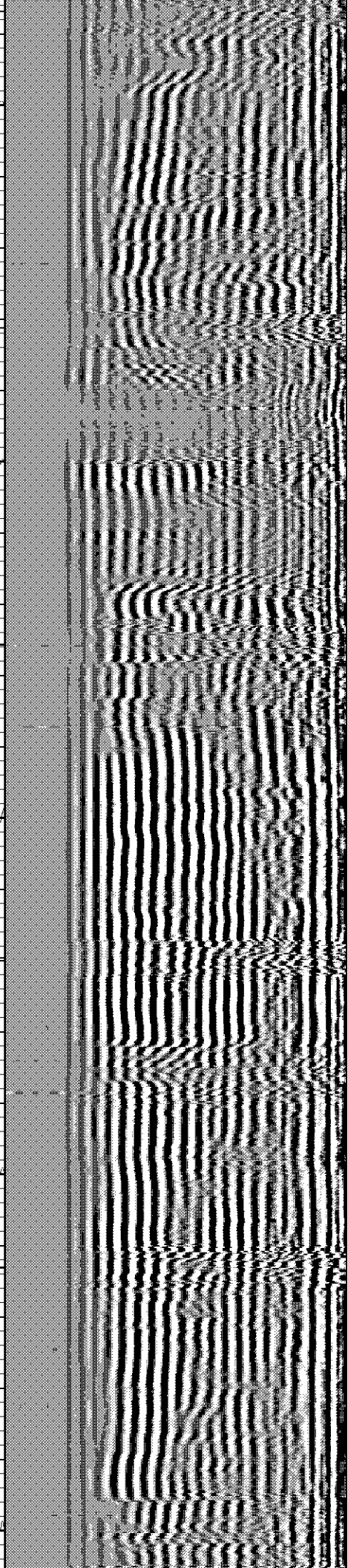
1750

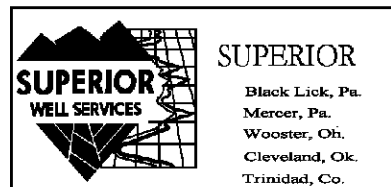
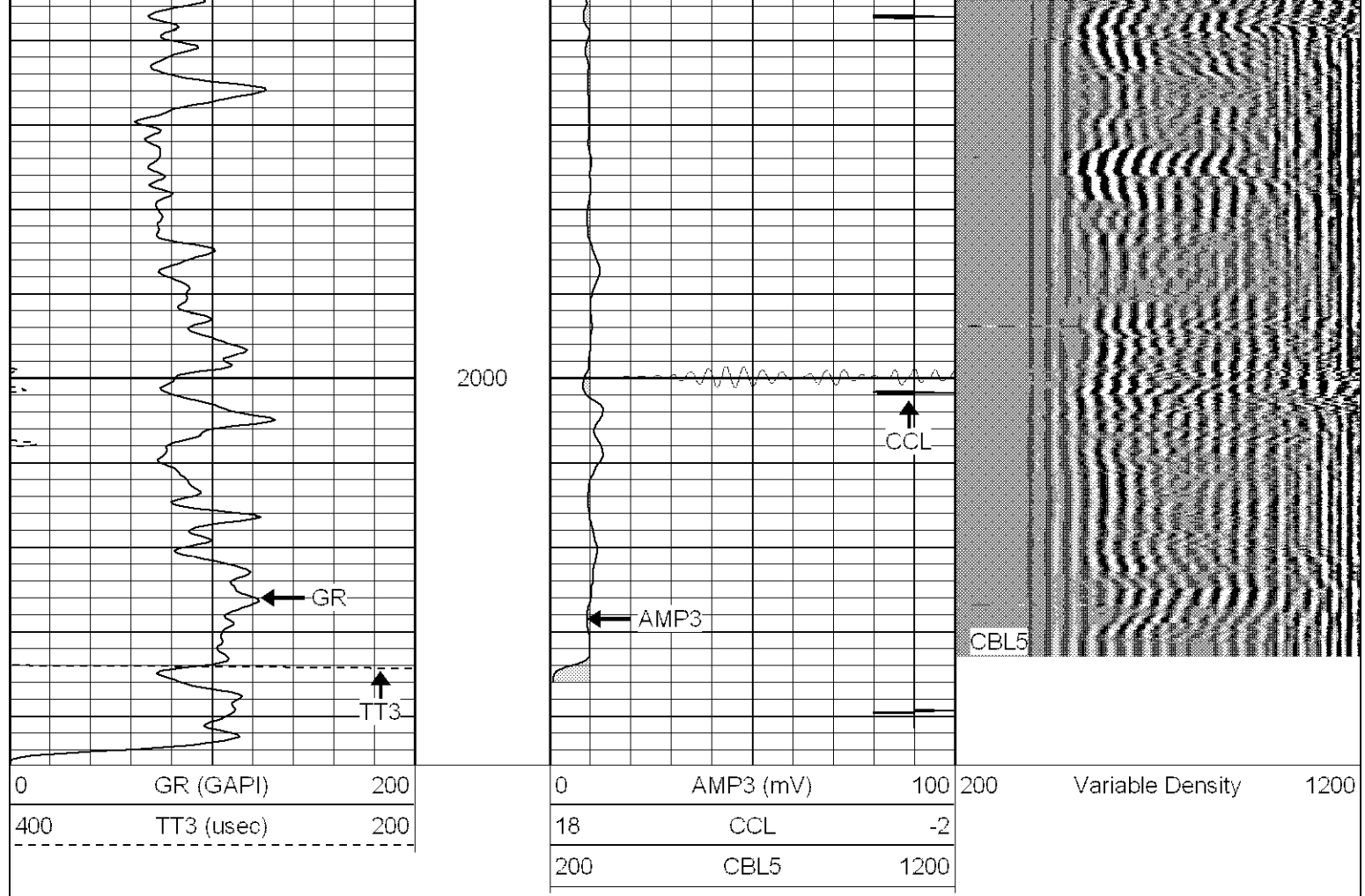
1800

1850

1900

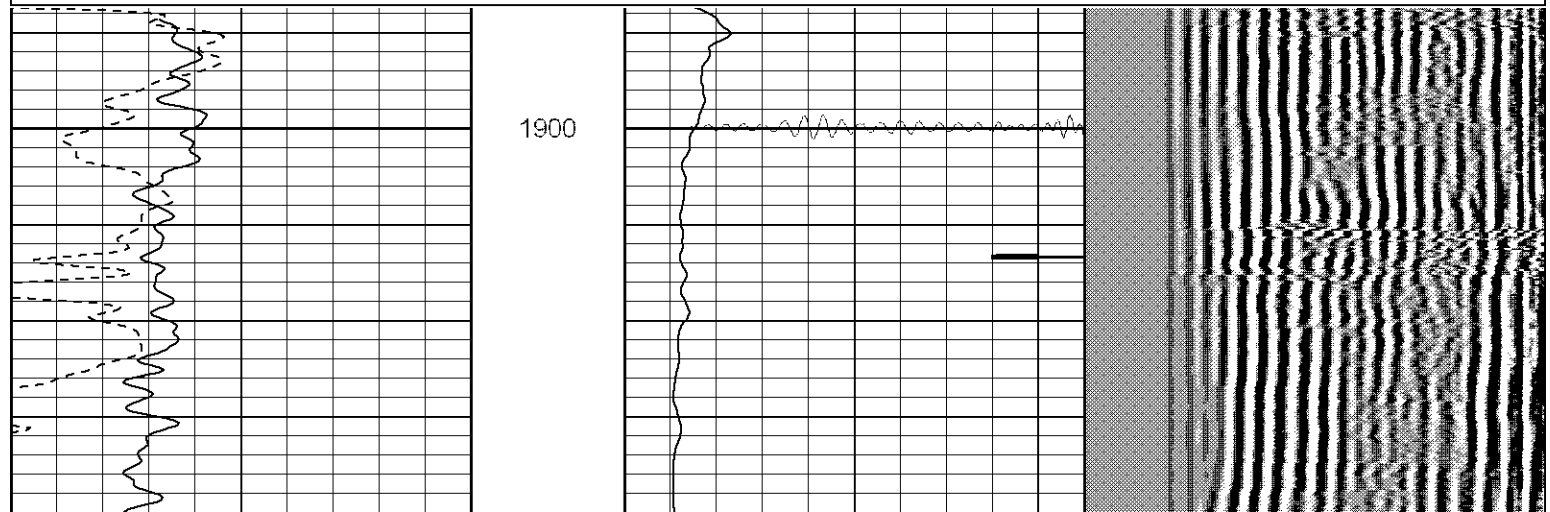
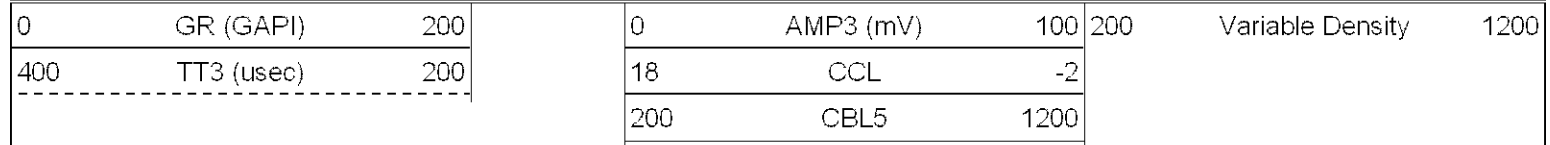
1950

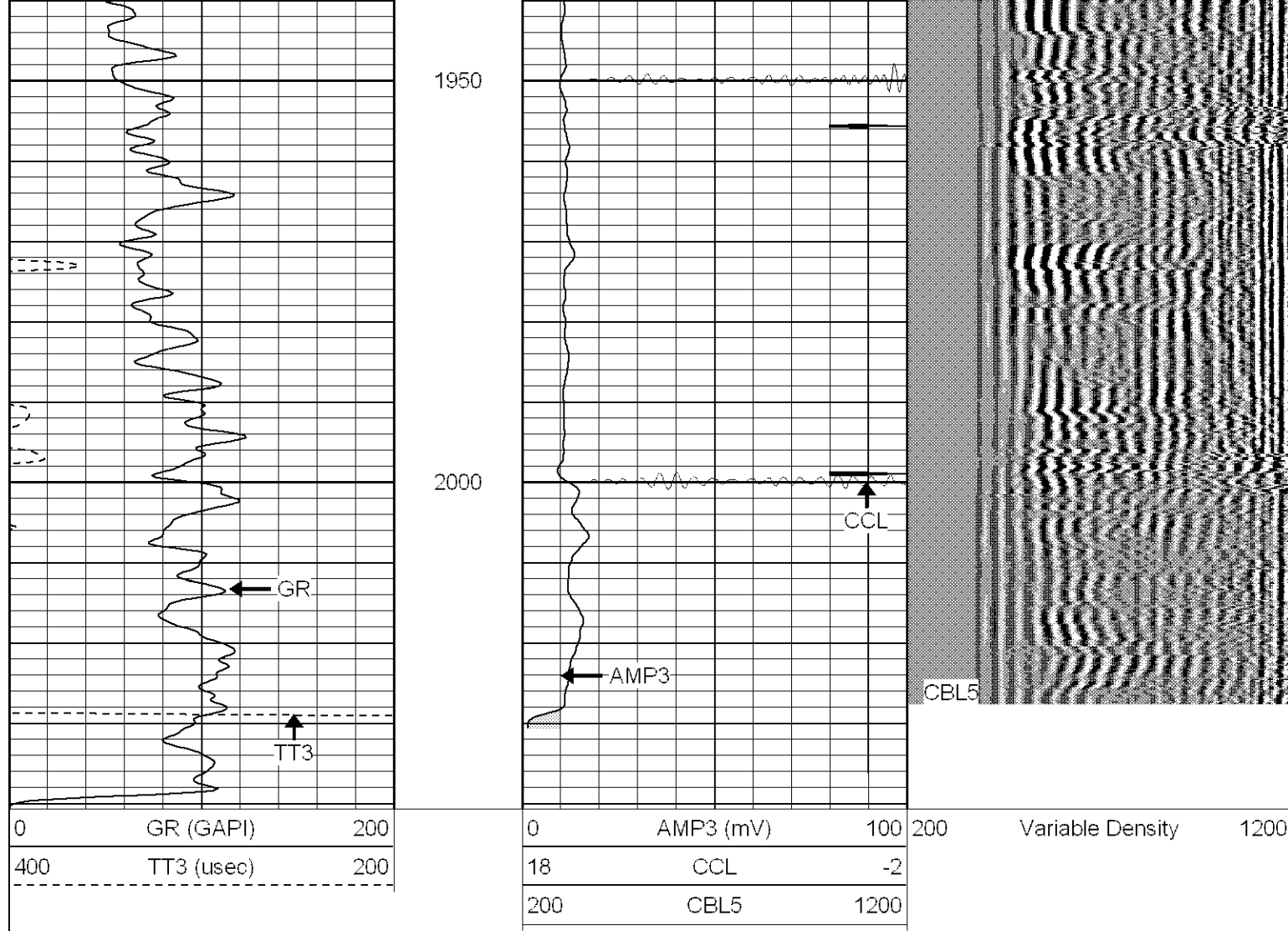




Repeat Section

Database File: ac051171107b.db
 Dataset Pathname: pass1
 Presentation Format: cblrt
 Dataset Creation: Wed Jul 11 14:50:26 2007 by Log Open-Cased 070508
 Charted by: Depth in Feet scaled 1:240





Calibration Report

Database File: ac051171107b.db
 Dataset Pathname: pass1
 Dataset Creation: Wed Jul 11 14:50:26 2007 by Log Open-Cased 070508

Gamma Ray Calibration Report

Serial Number: 2.75
 Tool Model: T3
 Performed: Wed Jul 11 12:58:25 2007

Calibrator Value: 1.0 GAPI

Background Reading: 0.0 cps
 Calibrator Reading: 1.0 cps

Sensitivity: 1.0000 GAPI/cps

Cement Bond Log Calibration Report

Serial Number: Titan4
 Tool Model: T4
 Performed: Tue Jun 26 11:32:40 2007

Depth: 74.8132 ft
 Casing Diameter: 5.5 in

3' Spacing 5' Spacing

Signal Zero: 0 0 mV

Gain:	50.4122	44.4675
Offset:	1.5	-0.896733

[illegible]