

Patterson

CEMENT BOND LOG

Company Pioneer Natural Resources		Company Pioneer Natural Resources	
Well	Settler 12-3	Well	Settler 12-3
Field	Purgatorie River	Field	Purgatorie River
County	Las Animas	County	Las Animas
State	Colorado	State	Colorado
Location:		API # : 05-071-08166-00	
SEC 3 TWP 35S RGE 65W		Other Services	
Permanent Datum	Ground Level	Elevation	7344'
Log Measured From	Kelly Bushing 4' Above G.L.	Elevation	K.B. 7348'
Drilling Measured From	Kelly Bushing	D.F.	-----
		G.L.	7344'
Date	12/16/04		
Run Number	One		
Depth Driller	1615'		
Depth Logger	1594'		
Bottom Logged Interval	1590'		
Top Log Interval	Surface		
Open Hole Size	7 7/8"		
Type Fluid	Water		
Density / Viscosity	////		
Max. Recorded Temp.	115 DEG F		
Estimated Cement Top	24'		
Time Well Ready	Portable Mast		
Time Logger on Bottom	11:20		
Equipment Number	T244		
Location	Trinidad		
Recorded By	Allen		
Witnessed By			
Borehole Record		Tubing Record	
Run Number	Bit	From	To
		Size	Weight
			From
			To
Casing Record	Size	Wgt/Ft	Top
Surface String	8 5/8"		00
Prot. String			
Production String	5 1/2"		00
Liner			N/A

<<< Fold Here >>>

All interpretations are opinions based on inferences from electrical or other measurements and we cannot and do not guarantee the accuracy or correctness of any interpretation, and we shall not, except in the case of gross or willful negligence on our part, be liable or responsible for any loss, costs, damages, or expenses incurred or sustained by anyone resulting from any interpretation made by any of our officers, agents or employees. These interpretations are also subject to our general terms and conditions set out in our current Price Schedule.

Comments

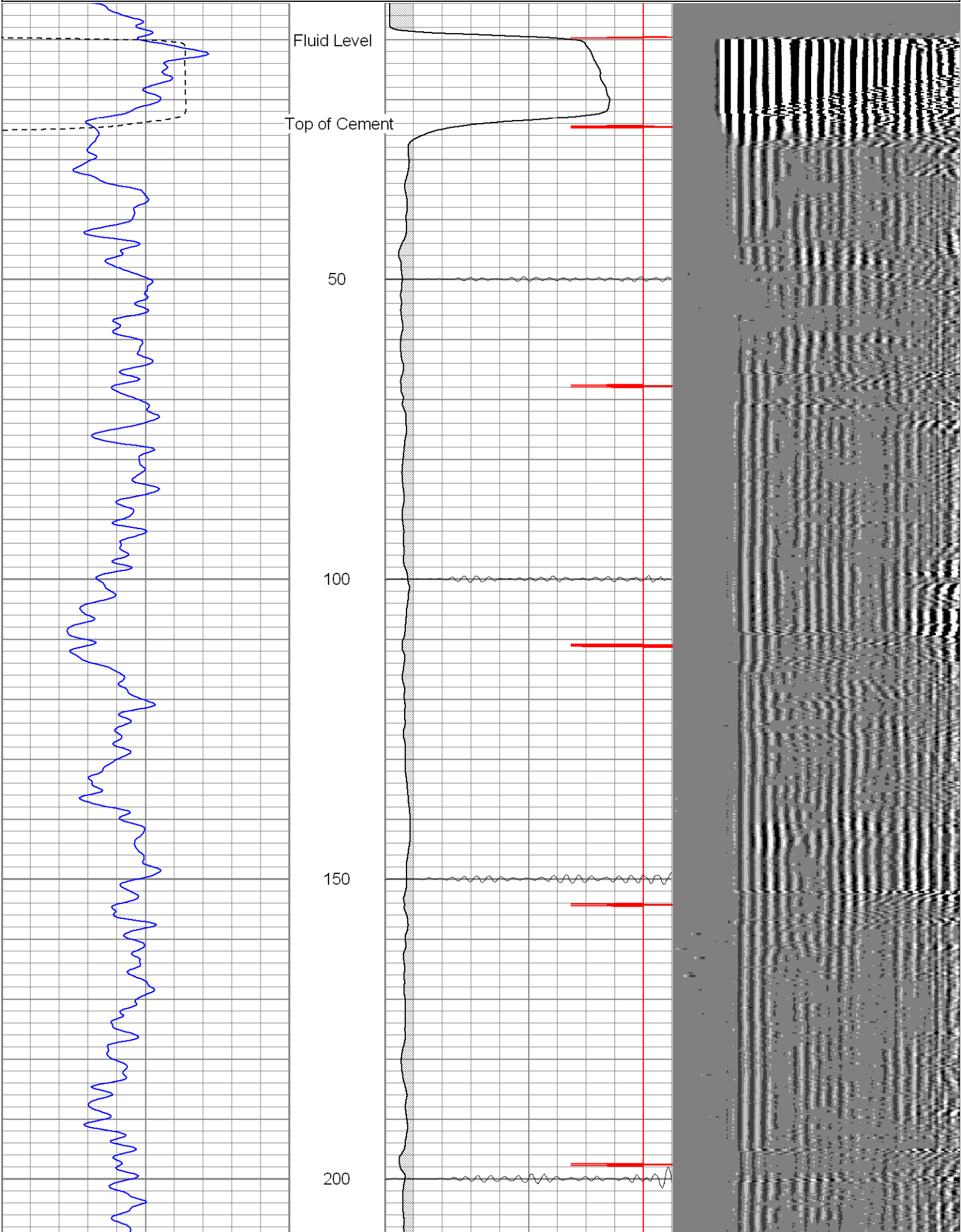
1 Degree of Deviation at Logger TD.
Well Directions:
Long Canyon-Left Before 4th gate-Across Creek-Take 1st Right-Go Through Coach and Rock Hopper
Locations-Past Rock Hopper to Top of Hill-Turn Right-Dead End on Location.

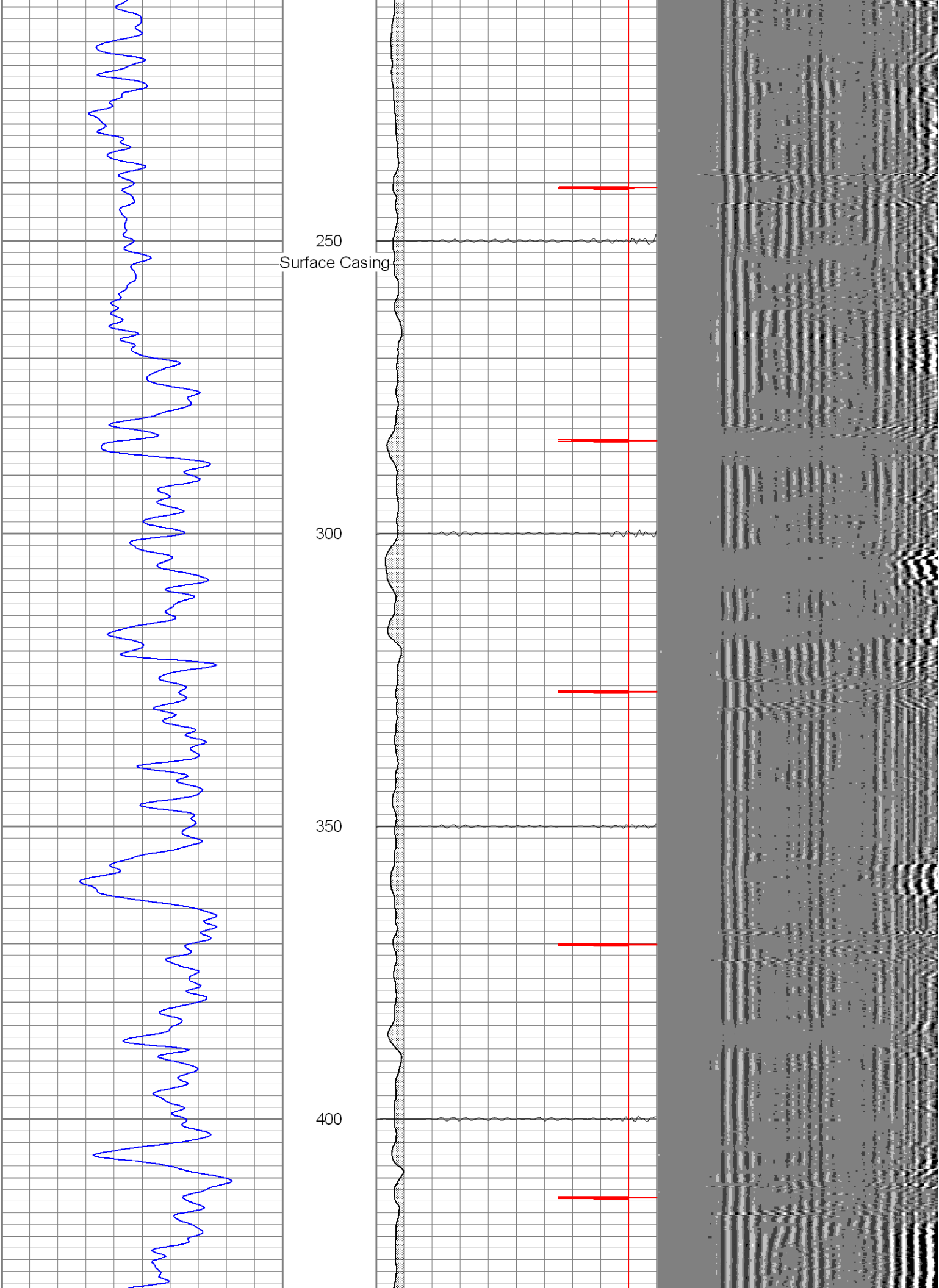
Database File: settler121604b.db
Dataset Pathname: pass2
Presentation Format: cblrt
Dataset Creation: Thu Dec 16 11:32:42 2004 by Log Warrior 7.0 STD Cas
Charted by: Depth in Feet scaled 1:240

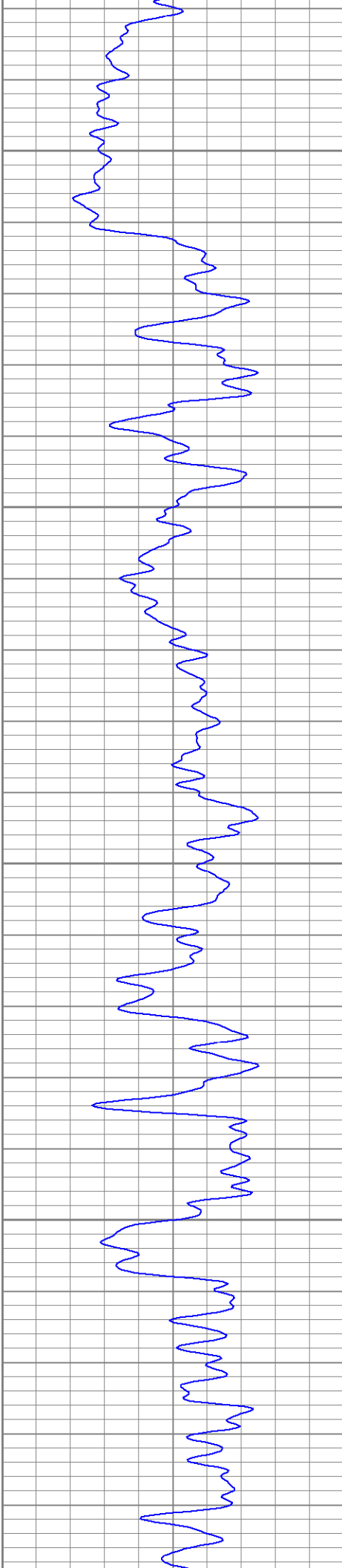
0	GR (GAPI)	200
400	TT3 (usec)	200

0	AMP3 (mV)	100
18	CCL	-2
200	CBL5	1200

200	Variable Density	1200
-----	------------------	------





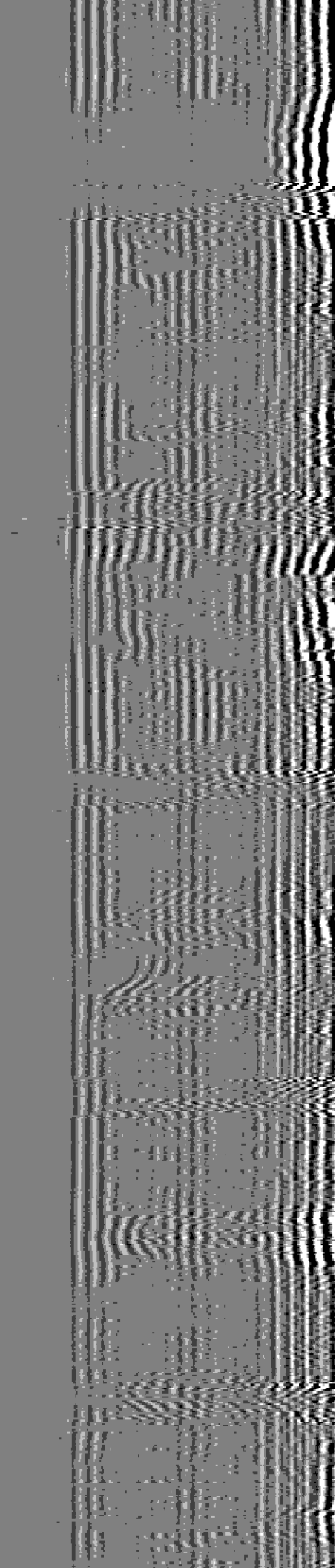


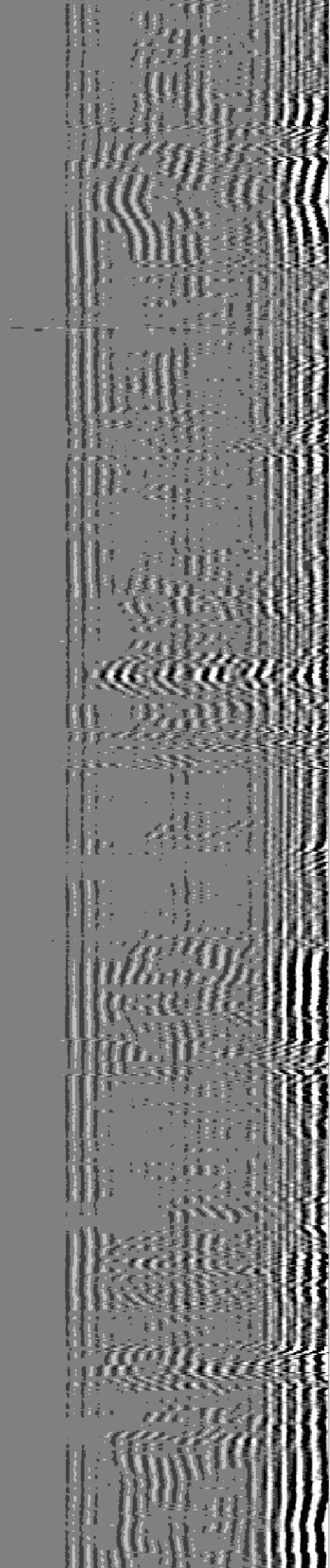
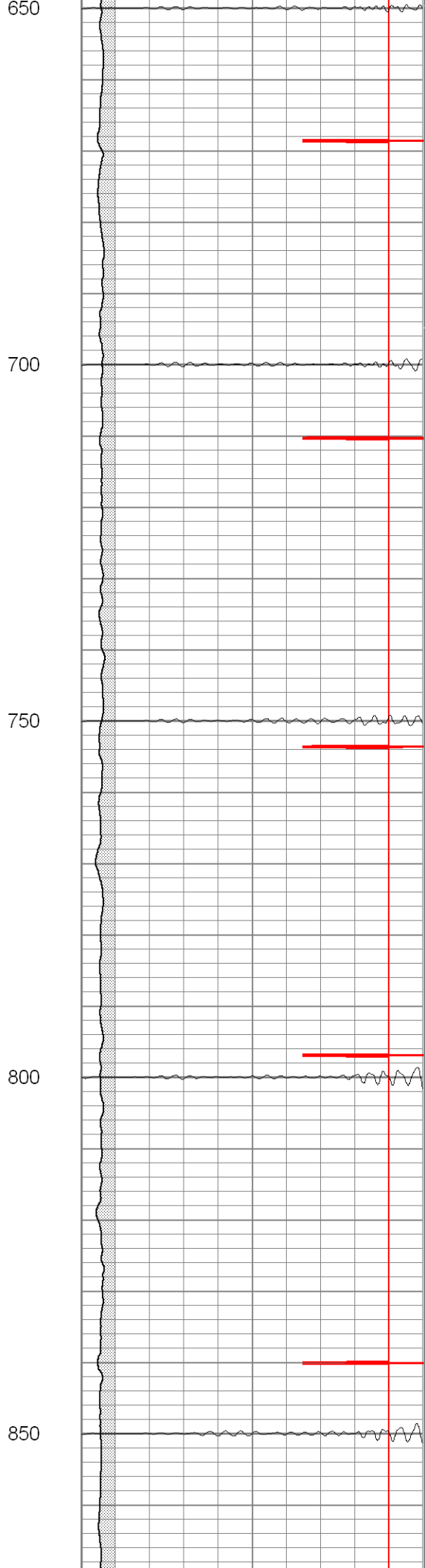
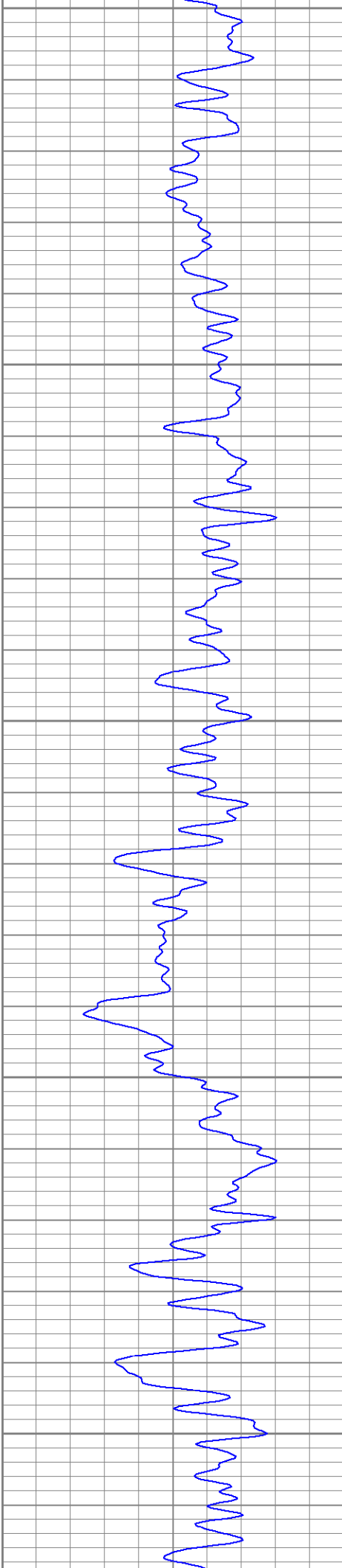
450

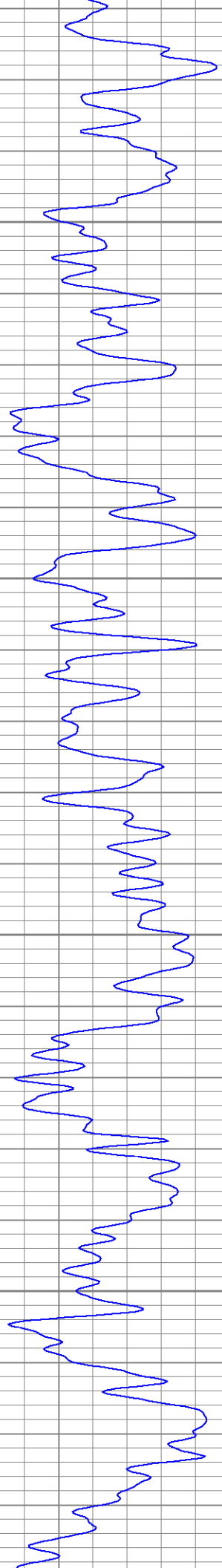
500

550

600





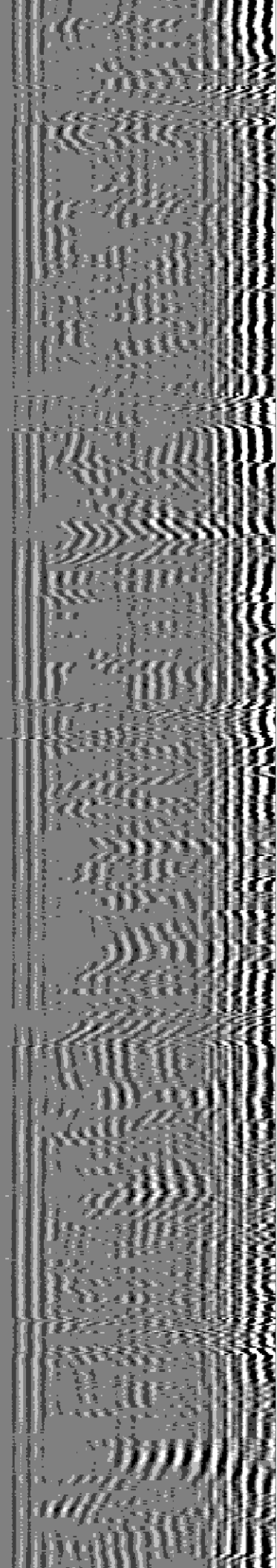


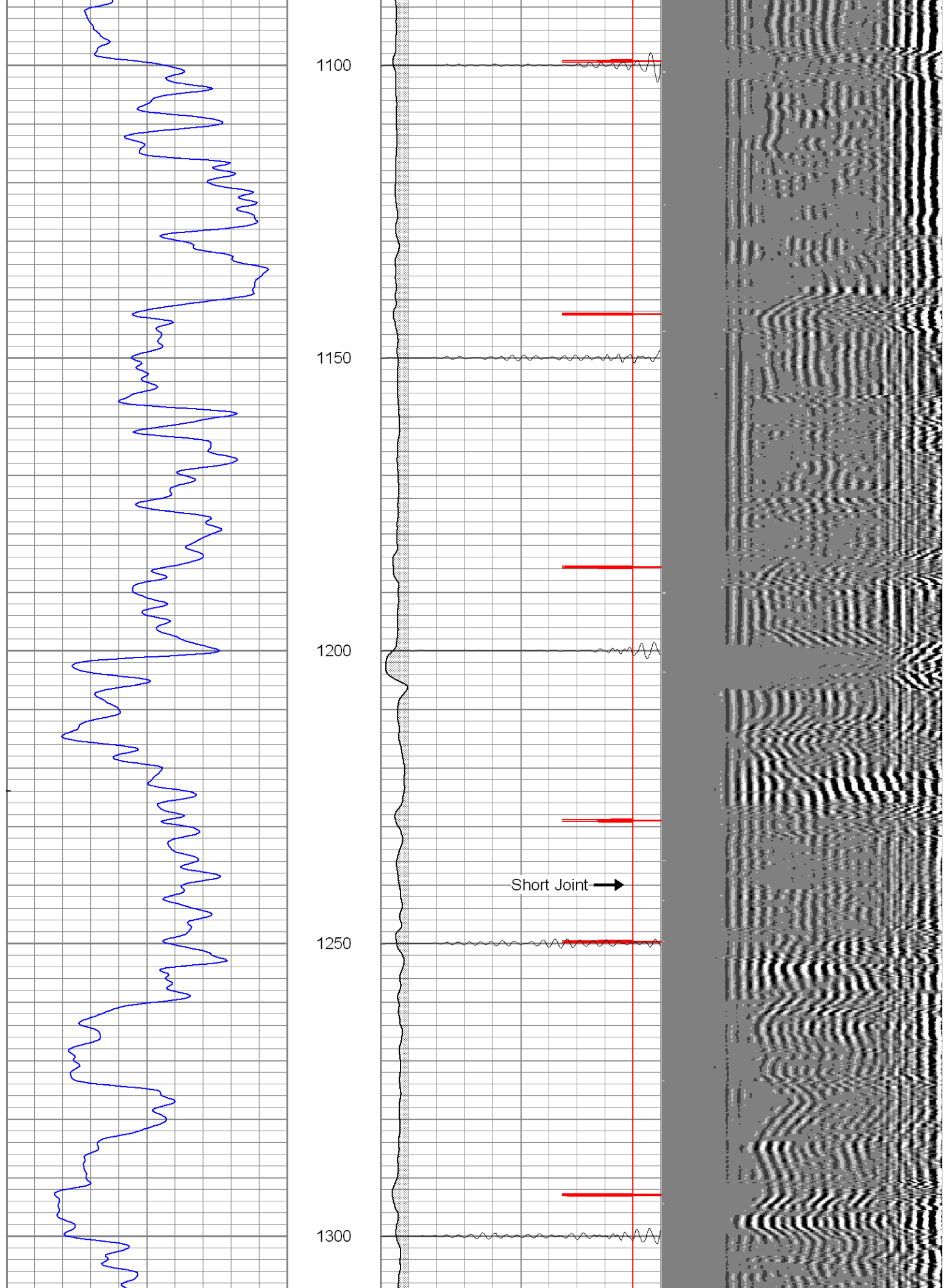
900

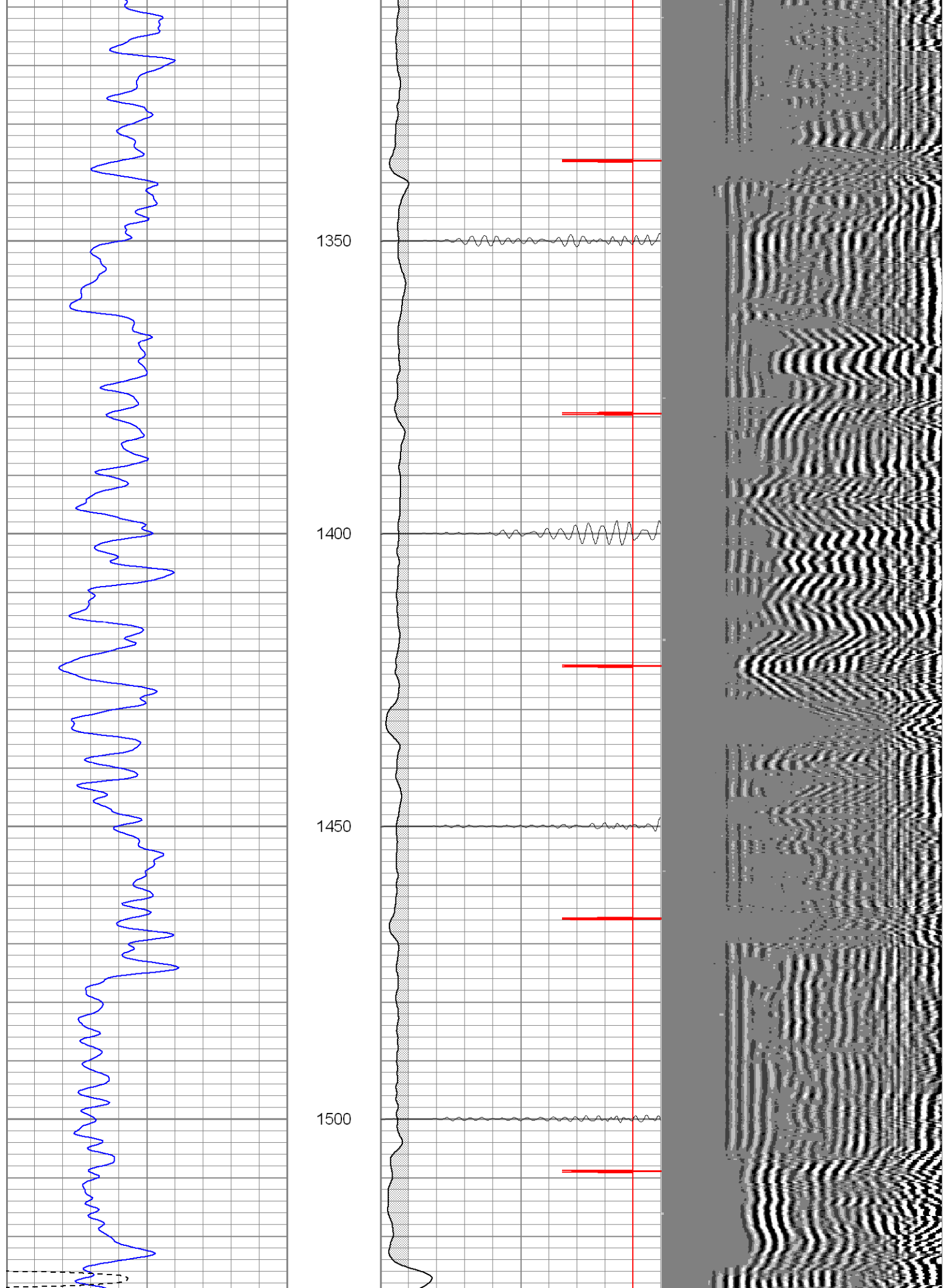
950

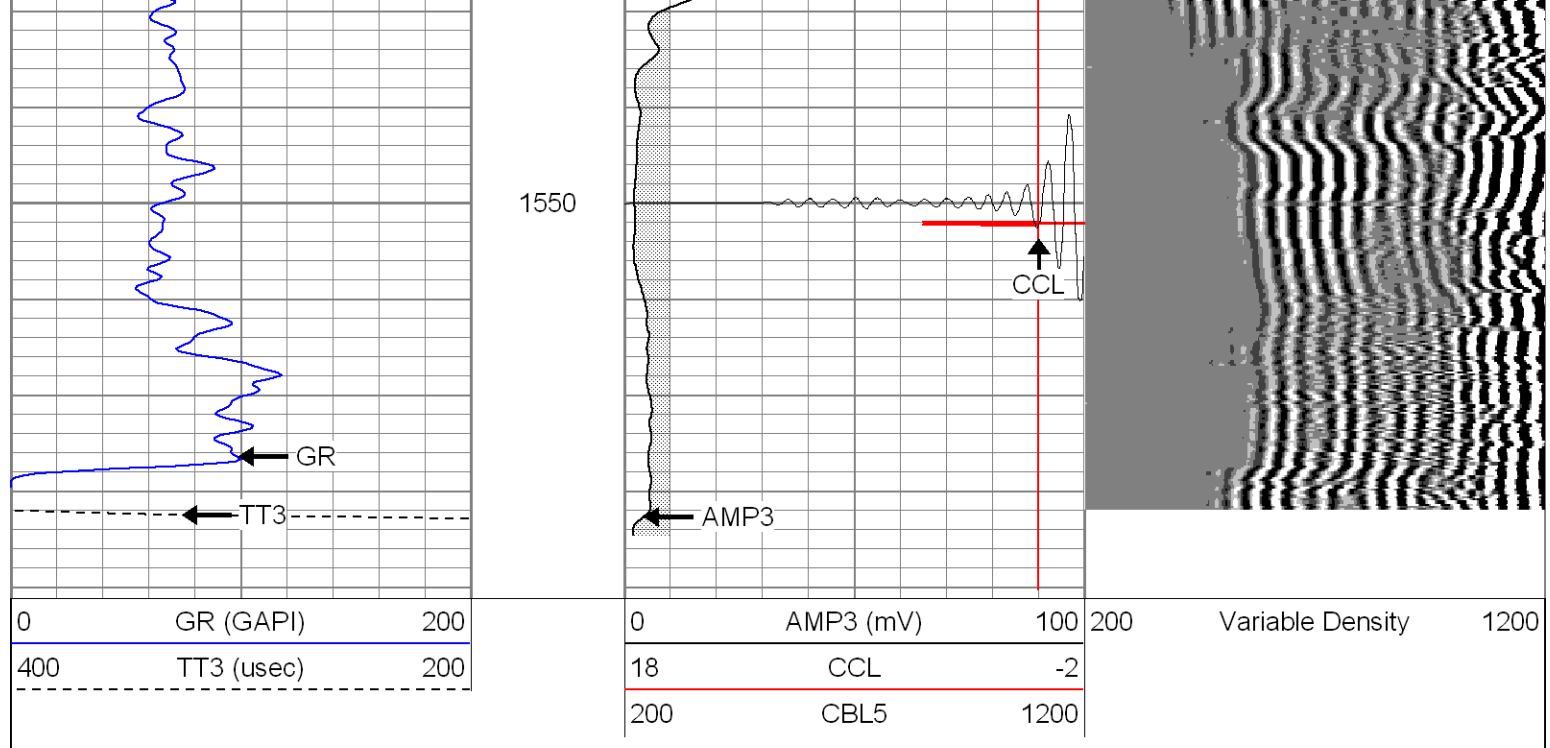
1000

1050





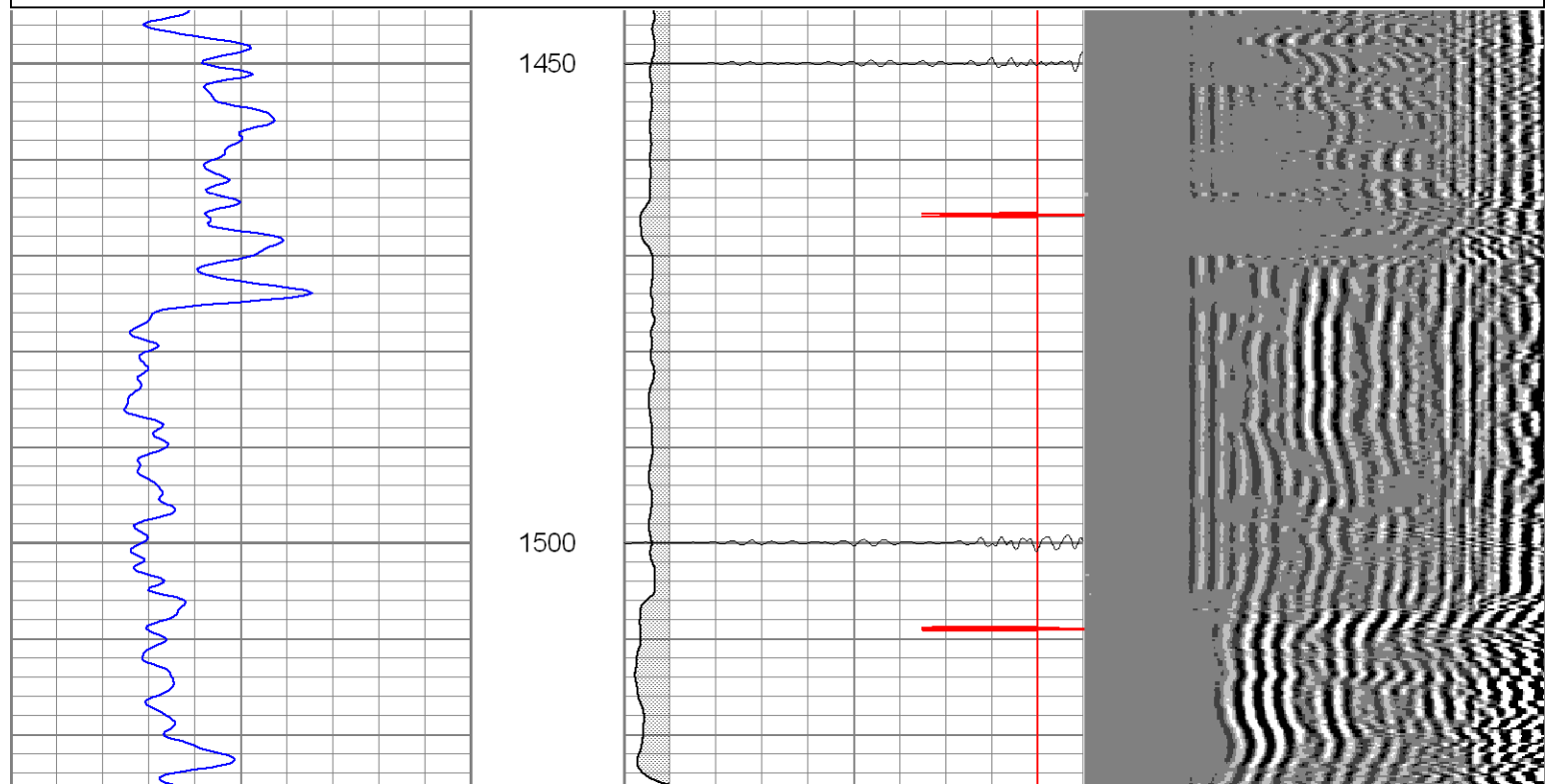
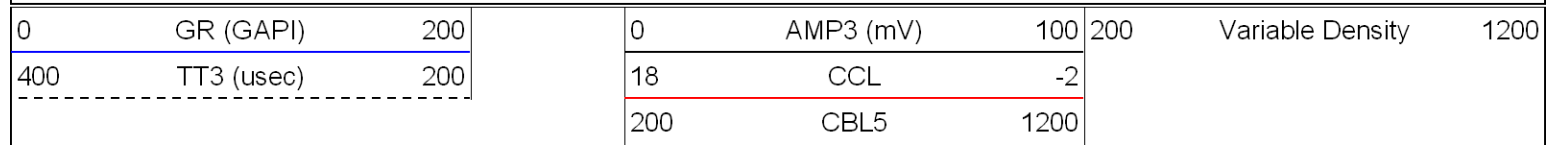


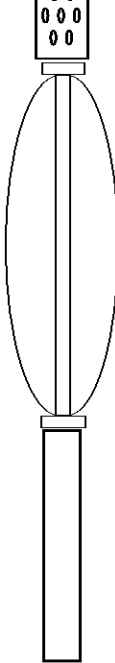


Patterson

Repeat Section

Database File: settler121604b.db
 Dataset Pathname: pass1
 Presentation Format: cblrt
 Dataset Creation: Thu Dec 16 11:27:01 2004 by Log Warrior 7.0 STD Cas
 Charted by: Depth in Feet scaled 1:240



CCL	0.70		CENT-X (1)	3.00	1.69	25.00
			CCL-T2 (Titan2)	1.91	2.25	15.00
Dataset: /field/well/run1/_plots/_jobs_/cbl Total Length: 15.41 ft Total Weight: 180.00 lb O.D. 2.25 in						

Cement Bond Log Calibration Report				
Serial Number:	Titan2			
Tool Model:	2			
Performed:	Mon Dec 06 10:22:37 2004			
Depth:	377.484	ft		
Casing Diameter:	5.5	in		
	3' Spacing		5' Spacing	
Signal Zero:	1		1	mV
Calibrated Amplitude:	85		85	mV
Reading at Signal Zero:	-0.02		0.0181641	V
Reading in Free Pipe:	1.6		1.8	V
Gain:	51.8519		47.1424	
Offset:	2.03704		0.143701	
Gamma Ray Calibration Report				
Serial Number:	Titan2			
Tool Model:	T2			
Performed:	Wed Jul 30 10:50:23 2003			
Calibrator Value:	200.0	GAPI		
Background Reading:	54.0	cps		
Calibrator Reading:	219.0	cps		
Sensitivity:	1.1500	GAPI/cps		