



SUPERIOR
Black Lick, Pa.
Mercer, Pa.
Wooster, Oh.
Cleveland, Ok.
Trinidad, Co.

CEMENT BOND GAMMA RAY LOG

Company El Paso E&P Company, L.P.

Well VPR "C" -123

Field Purgatoire River

County Las Animas

State CO

Location: API # : 05 071 09011 00

3401' FNL & 1109' FEL

Other Services
Temp

SEC 14 TWP 35S RGE 67W

Elevation

Permanent Datum Ground Level Elevation 8018'

Log Measured From Ground Level

Drilling Measured From Ground Level

K.B. -----
D.F. -----
G.L. 8018'

Date 2-23-07

Run Number One

Depth Driller 2525'

Depth Logger 2450'

Bottom Logged Interval 2448'

Top Log Interval Surface

Open Hole Size 7 7/8"

Type Fluid Water

Density / Viscosity ///

Max. Recorded Temp. 125F

Estimated Cement Top 108'

Time Well Ready Portable Mast

Time Logger on Bottom 12:30PM

Equipment Number T0698

Location Trinidad

Recorded By J Sisneros

Witnessed By

Run Number

Bit From To

Size

Weight

From To

Size

Wgt/Ft

Top Bottom

8 5/8"

00

00

00

00

00

00

00

5 1/2"

00

00

00

00

00

00

00

00

00

00

00

00

00

00

00

00

00

00

00

00

00

00

00

00

00

00

00

00

00

00

00

00

00

00

00

00

00

00

00

00

00

00

00

00

00

00

00

00

00

00

00

00

00

00

00

00

00

00

00

00

00

00

00

00

00

00

00

00

00

00

00

00

00

00

00

00

00

00

00

00

00

00

00

00

00

00

00

00

00

00

00

00

00

00

00

00

00

00

00

00

00

00

00

00

00

00

00

00

00

00

00

00

00

00

00

00

00

00

00

00

00

00

00

00

00

00

00

00

00

00

00

00

00

00

00

00

00

00

00

00

00

00

00

00

00

00

00

00

00

00

00

00

00

00

00

00

00

00

00

00

00

00

00

00

00

00

00

00

00

00

00

00

00

00

00

00

00

00

00

00

00

00

00

00

00

00

00

00

00

00

00

00

00

00

00

00

00

00

00

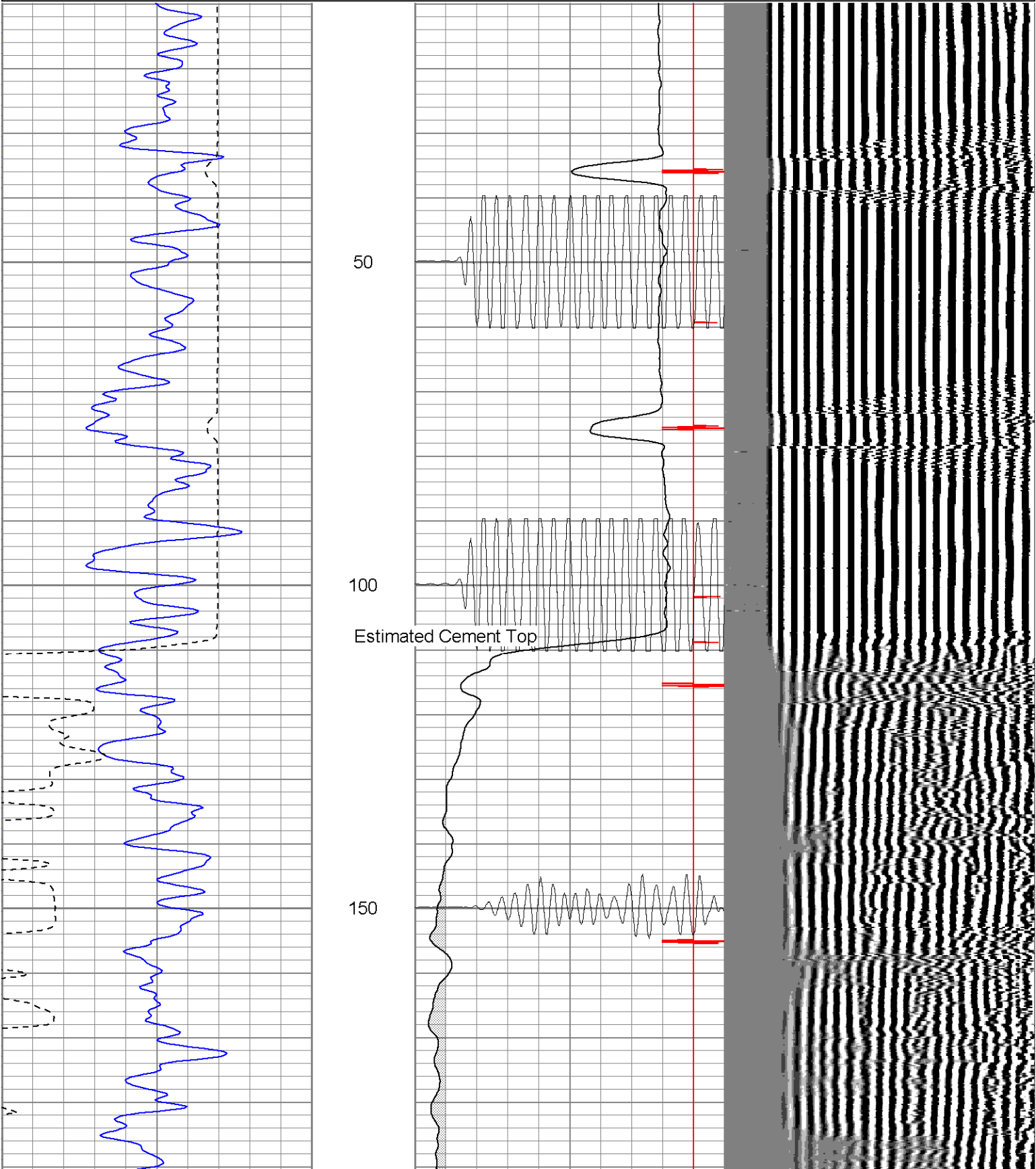


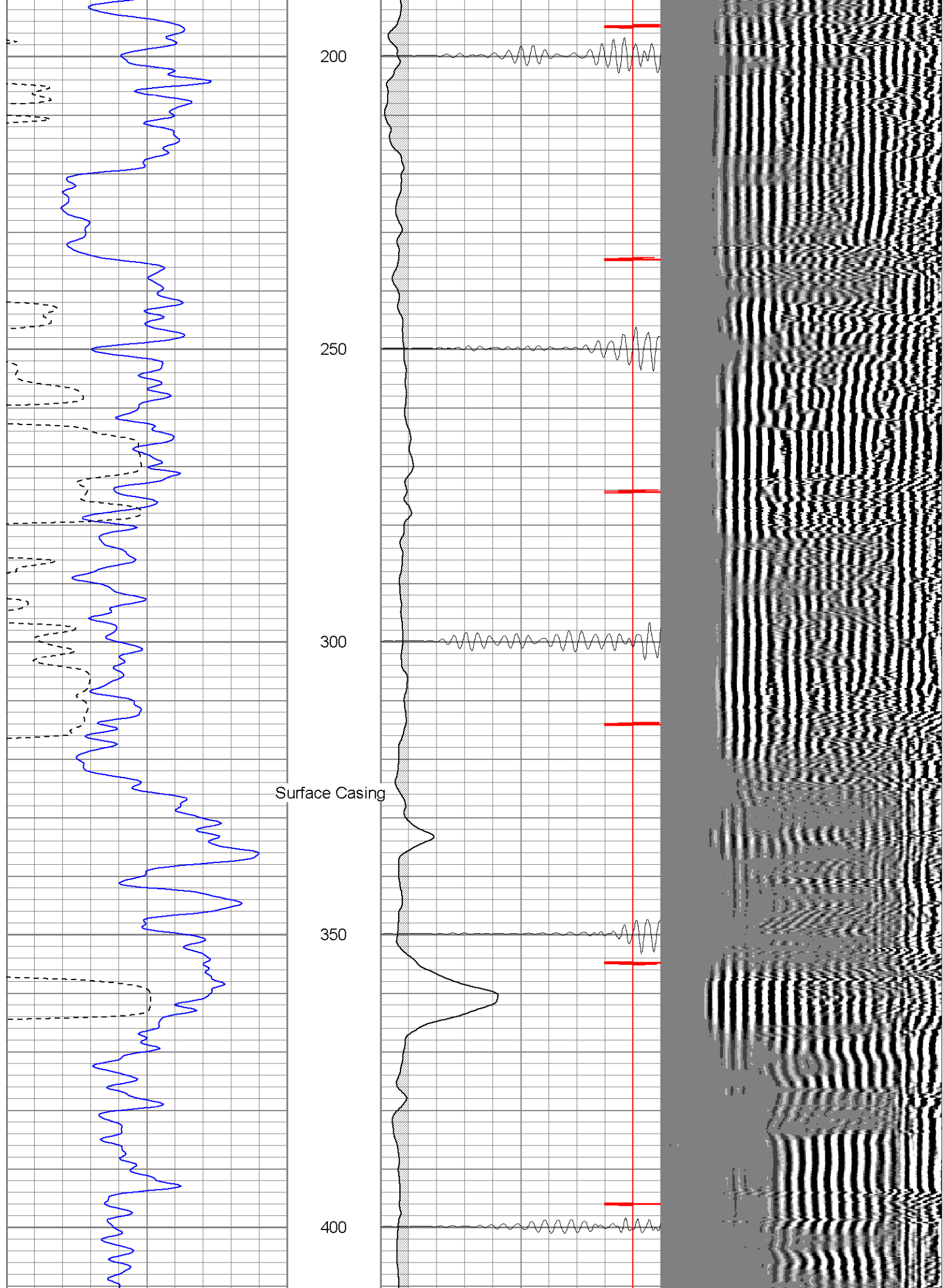
SUPERIOR
Black Lick, Pa.
Mercer, Pa.
Wooster, Oh.
Cleveland, Ok.
Trinidad, Co.

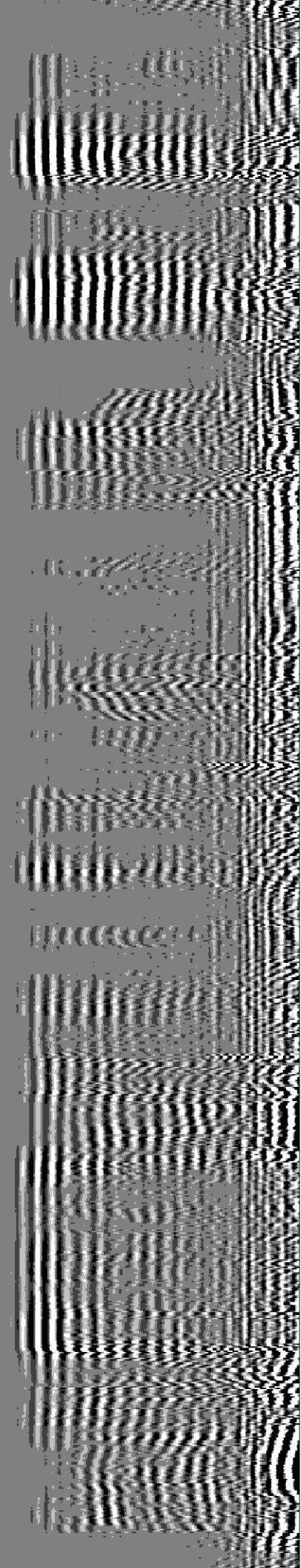
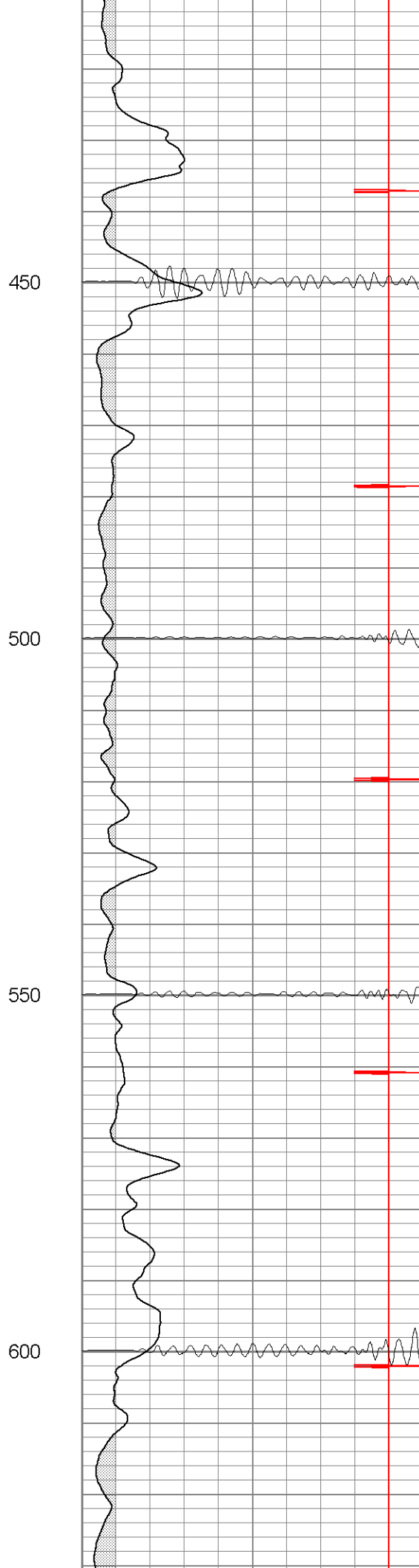
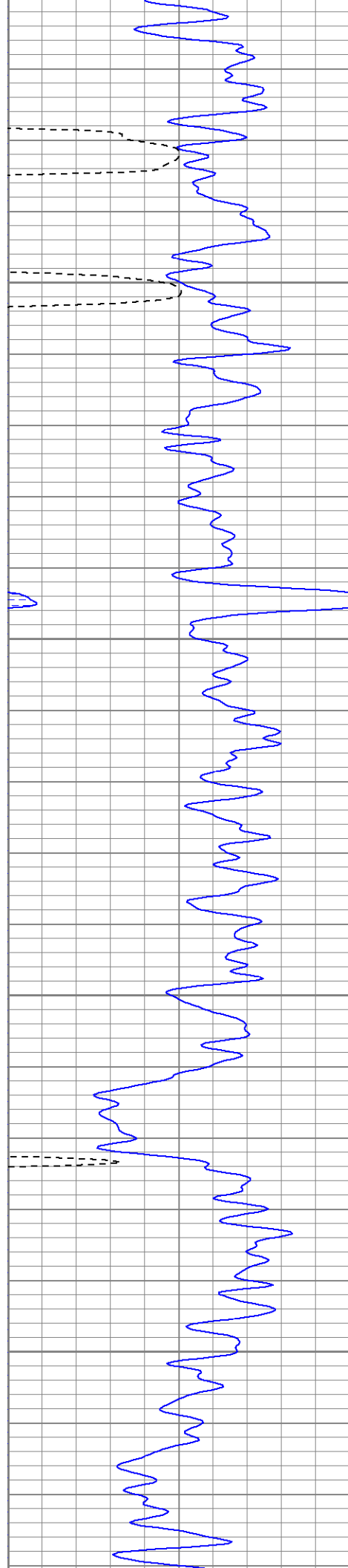
Main Pass

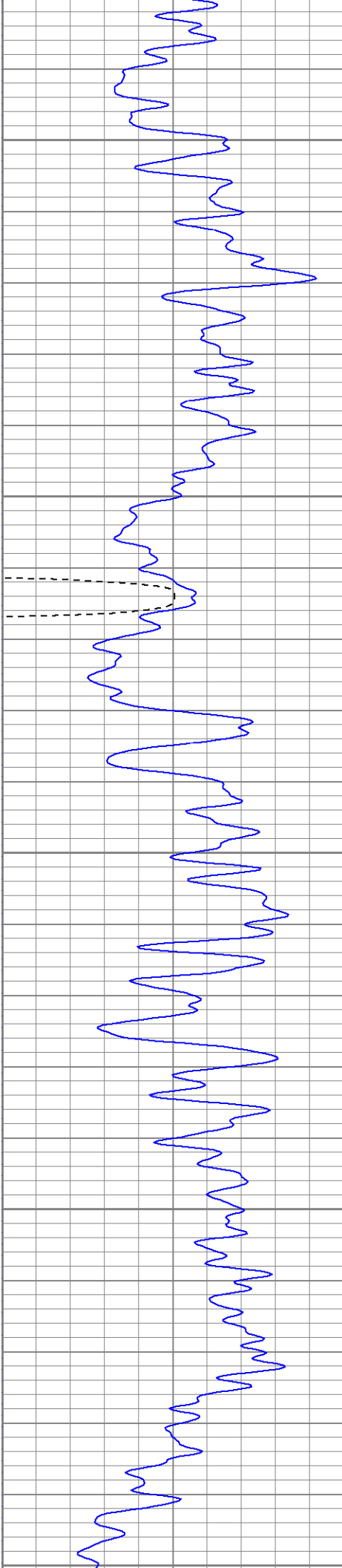
Database File: vprc12322307b.db
Dataset Pathname: pass2
Presentation Format: cblrt
Dataset Creation: Fri Feb 23 12:57:25 2007 by Log Open-Cased 060407
Charted by: Depth in Feet scaled 1:240

0	GR (GAPI)	200	0	AMP3 (mV)	100	200	Variable Density	1200
200	GR (GAPI)	400	18	CCL	-2			
400	TT3 (usec)	200	200	CBL5	1200			









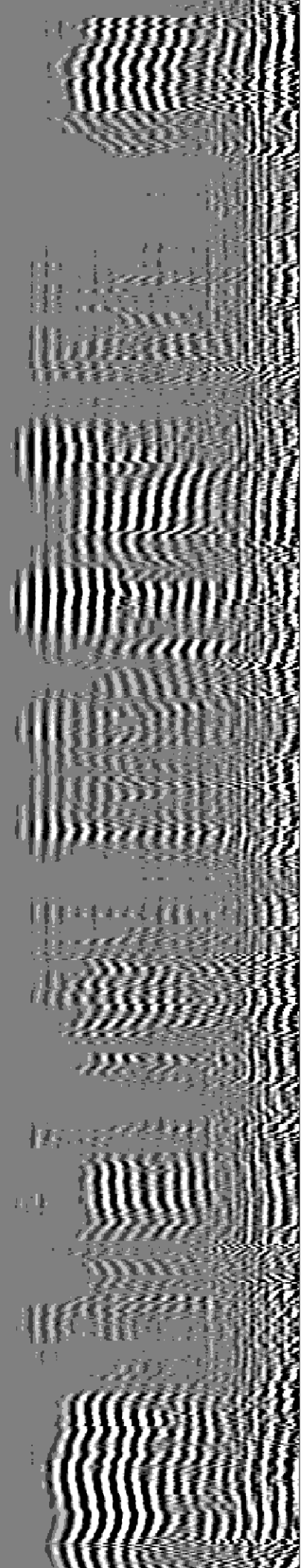
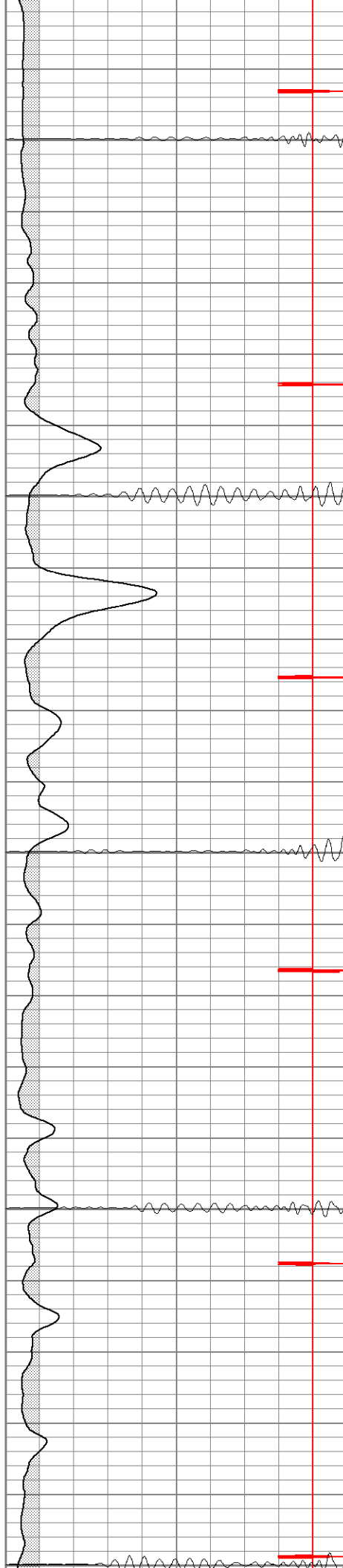
650

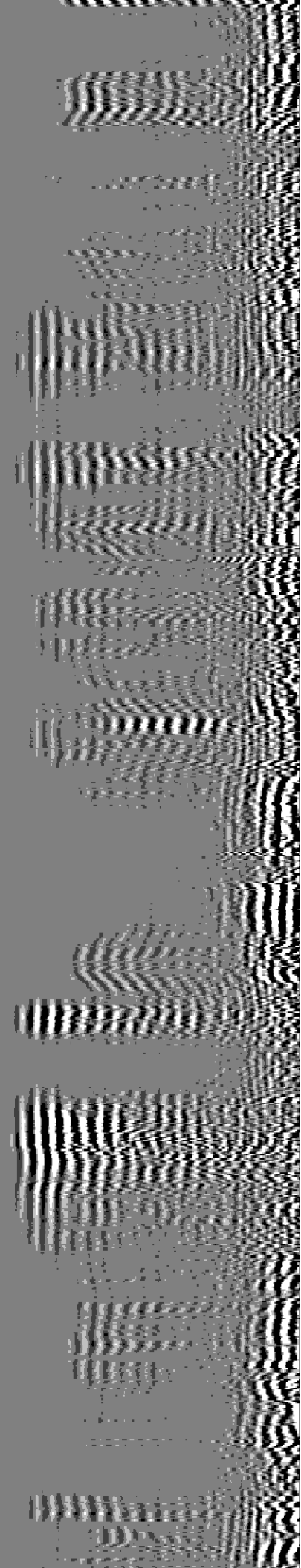
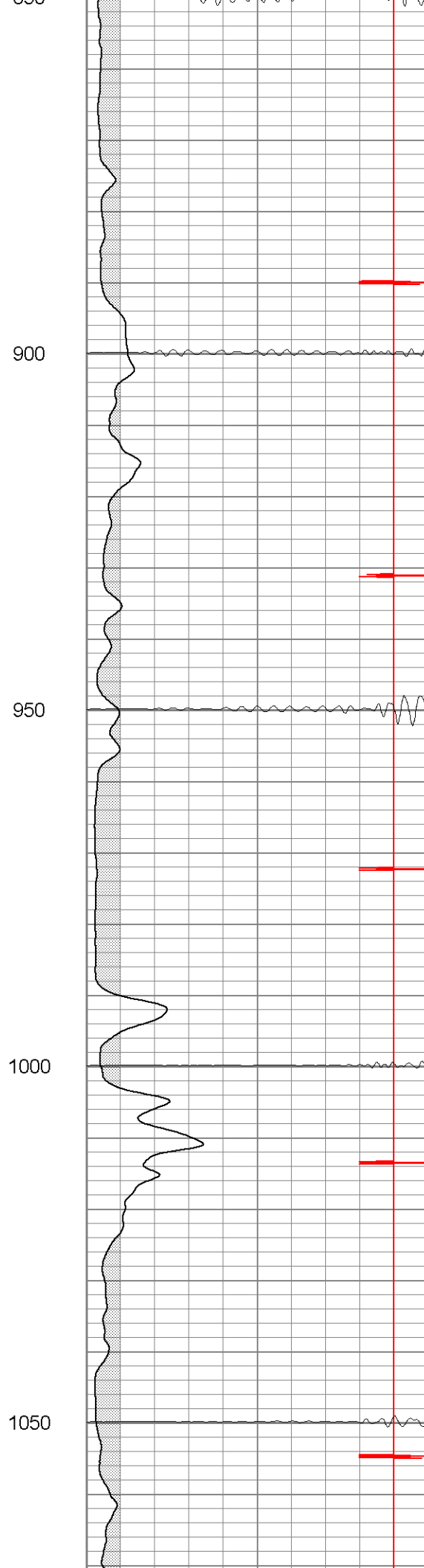
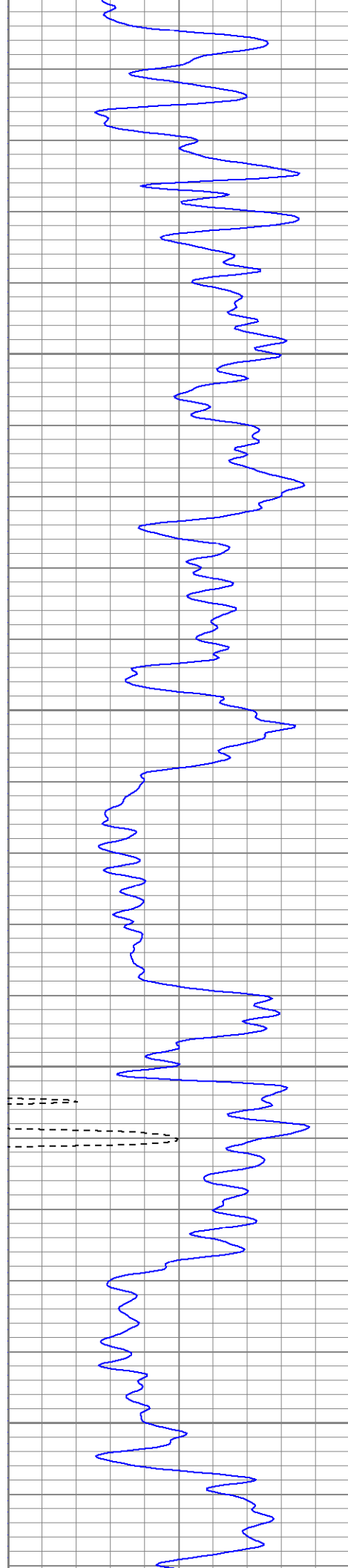
700

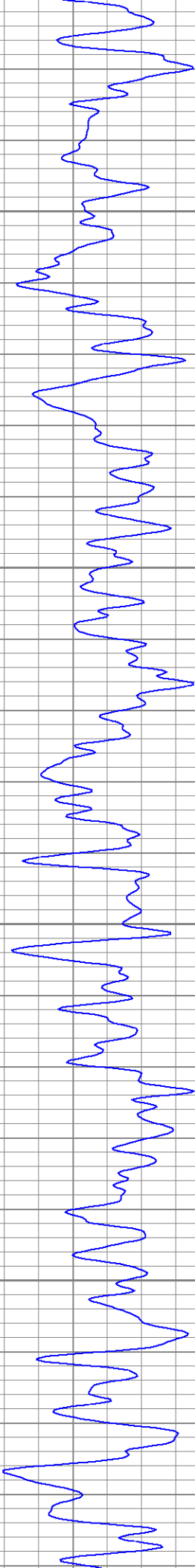
750

800

850





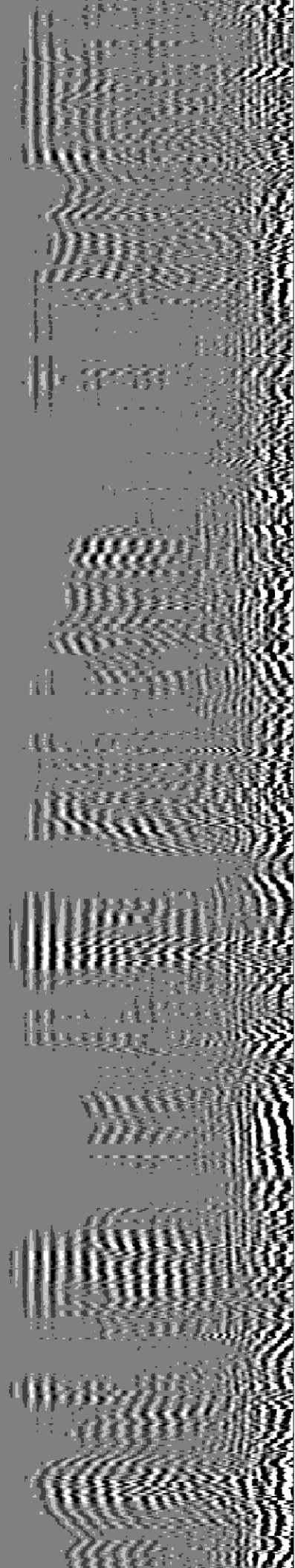
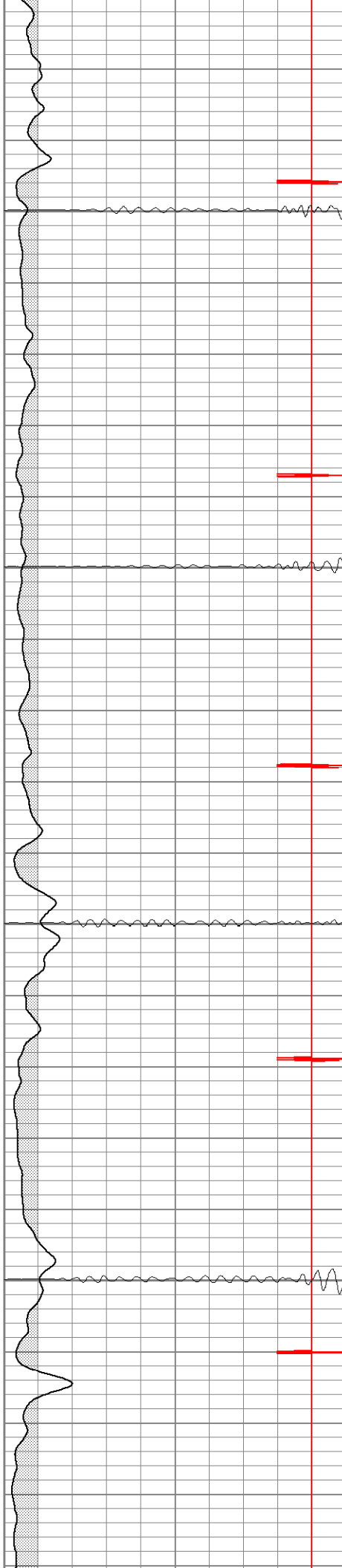


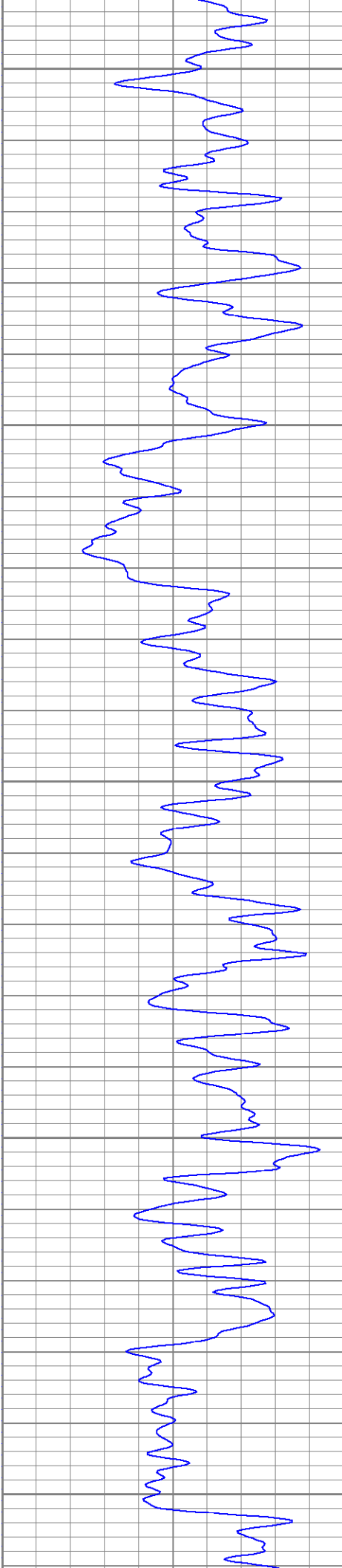
1100

1150

1200

1250





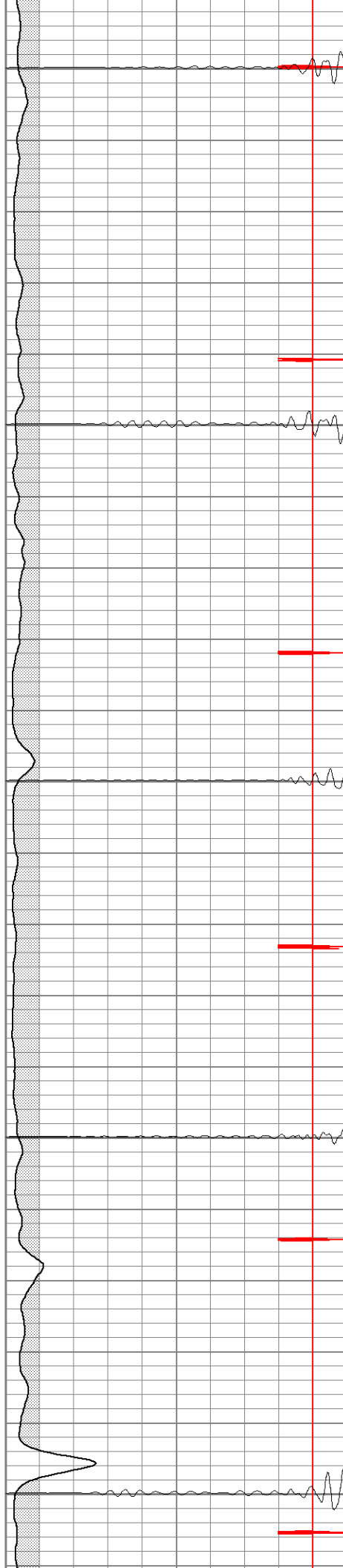
1300

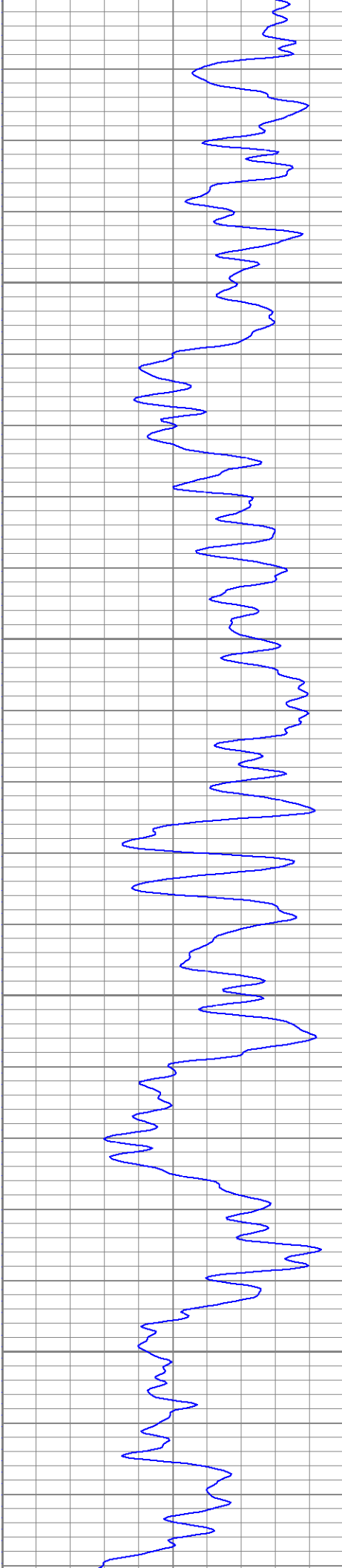
1350

1400

1450

1500



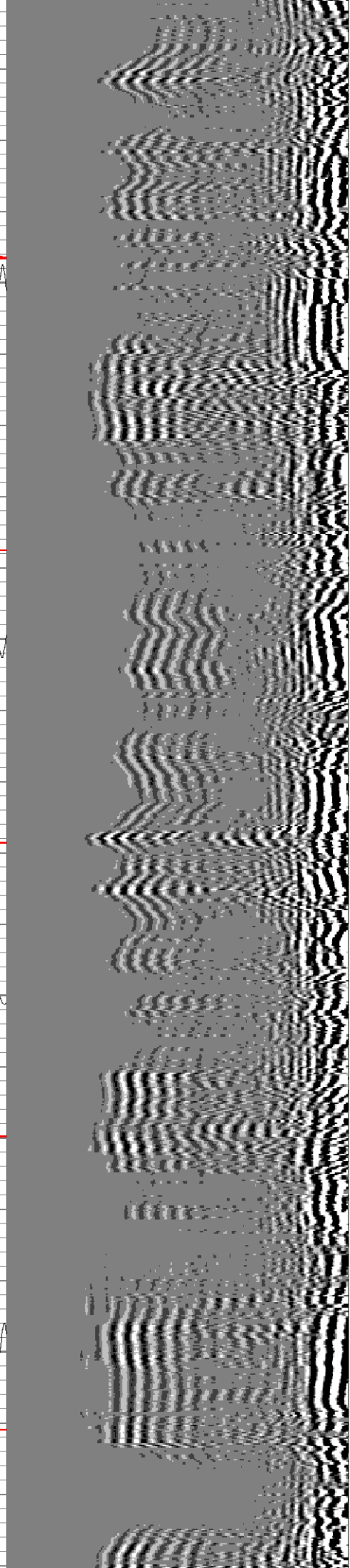
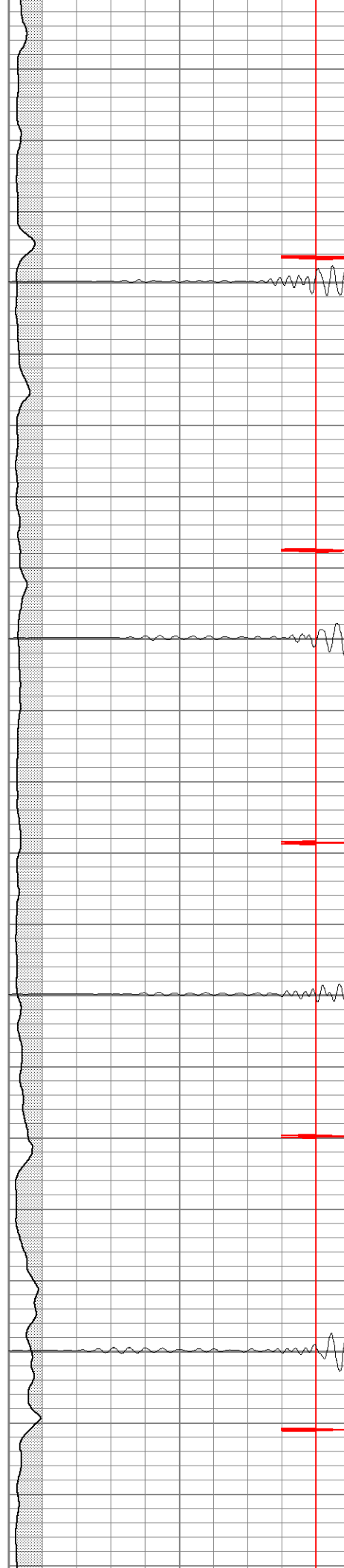


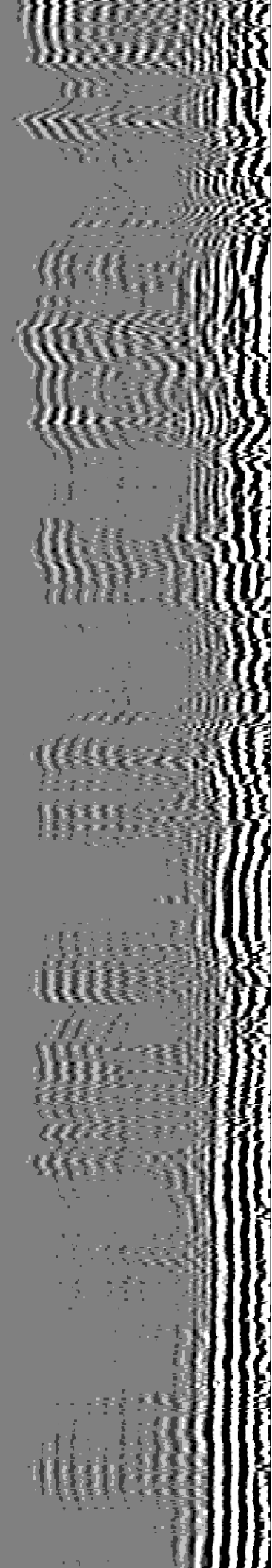
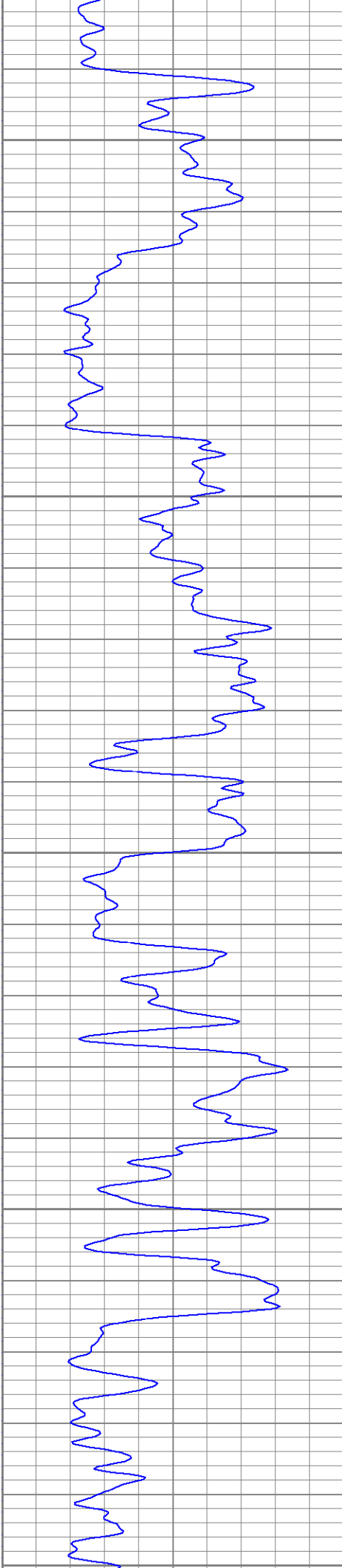
1550

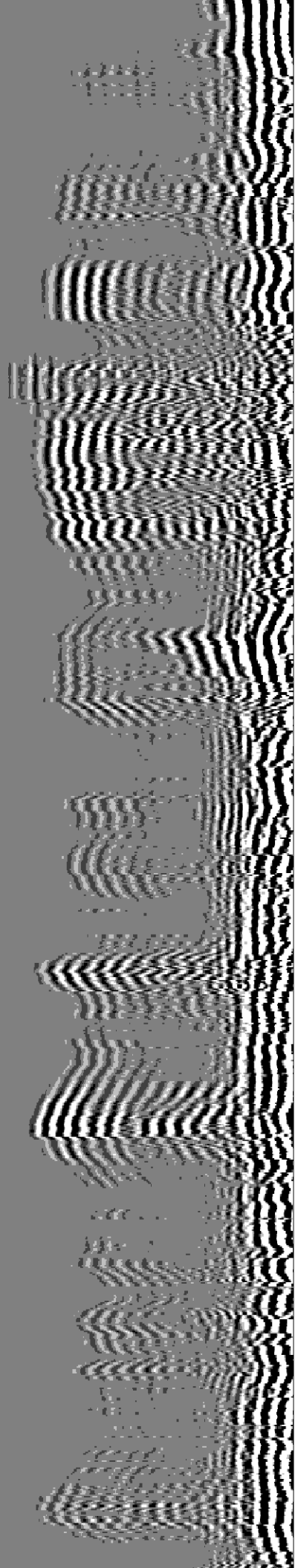
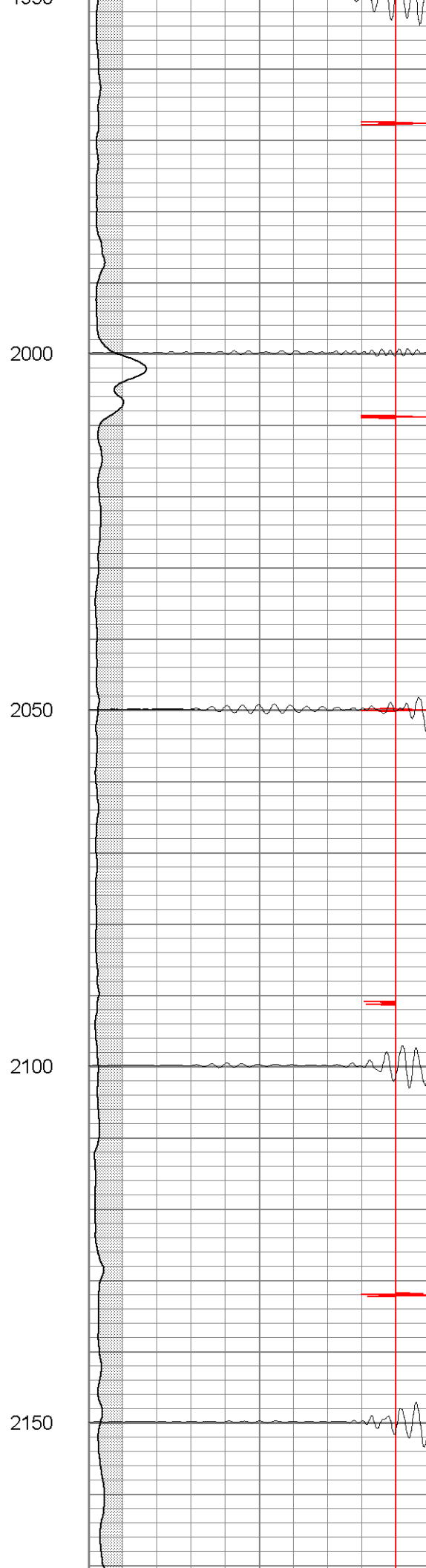
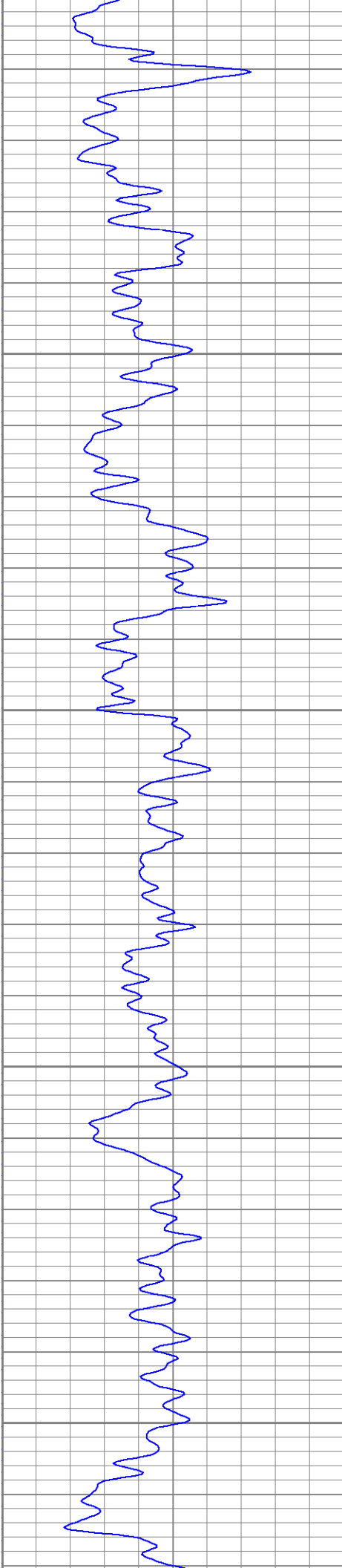
1600

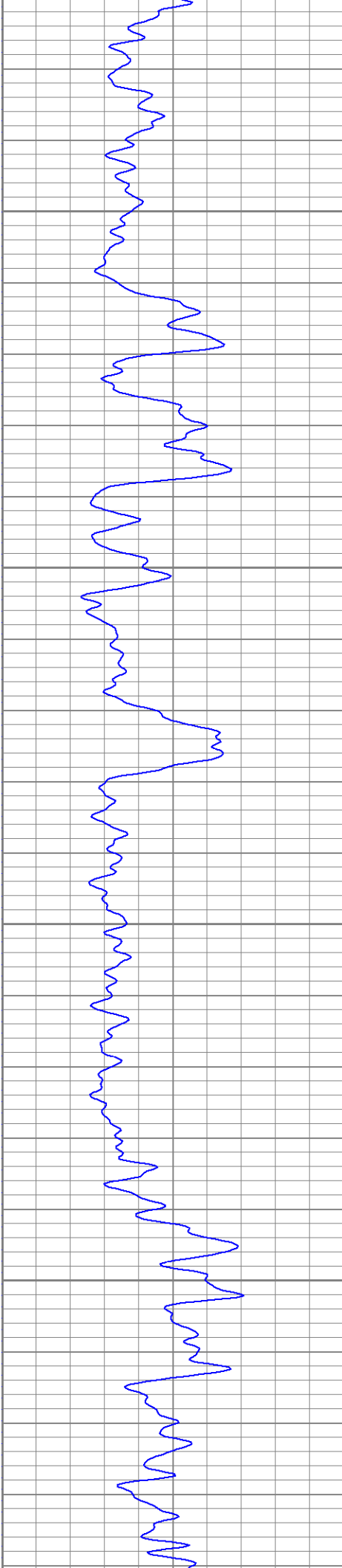
1650

1700







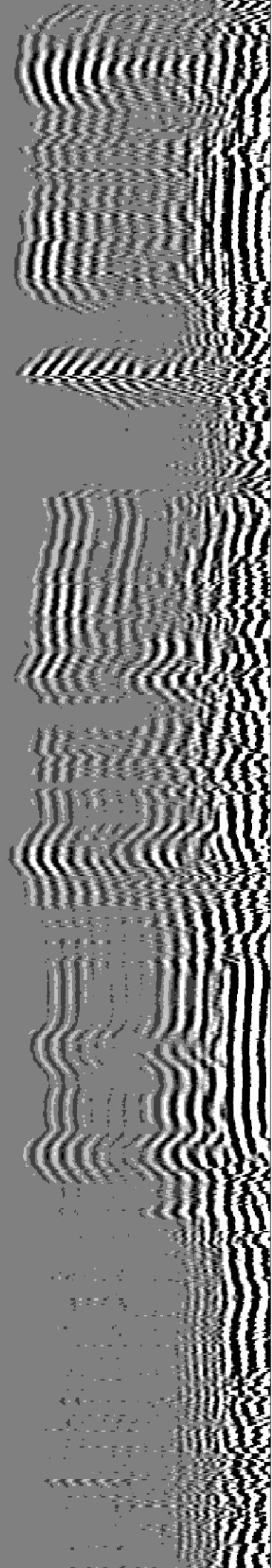


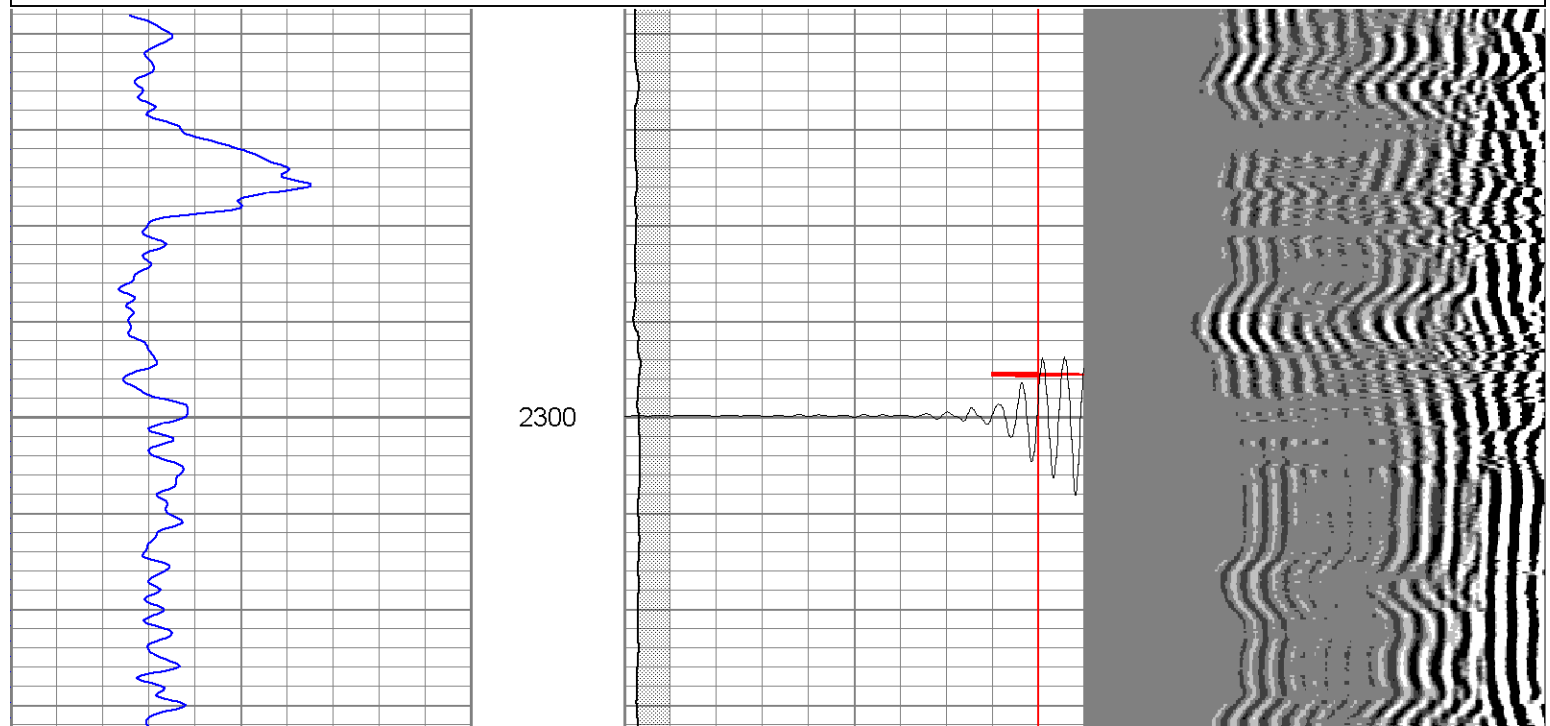
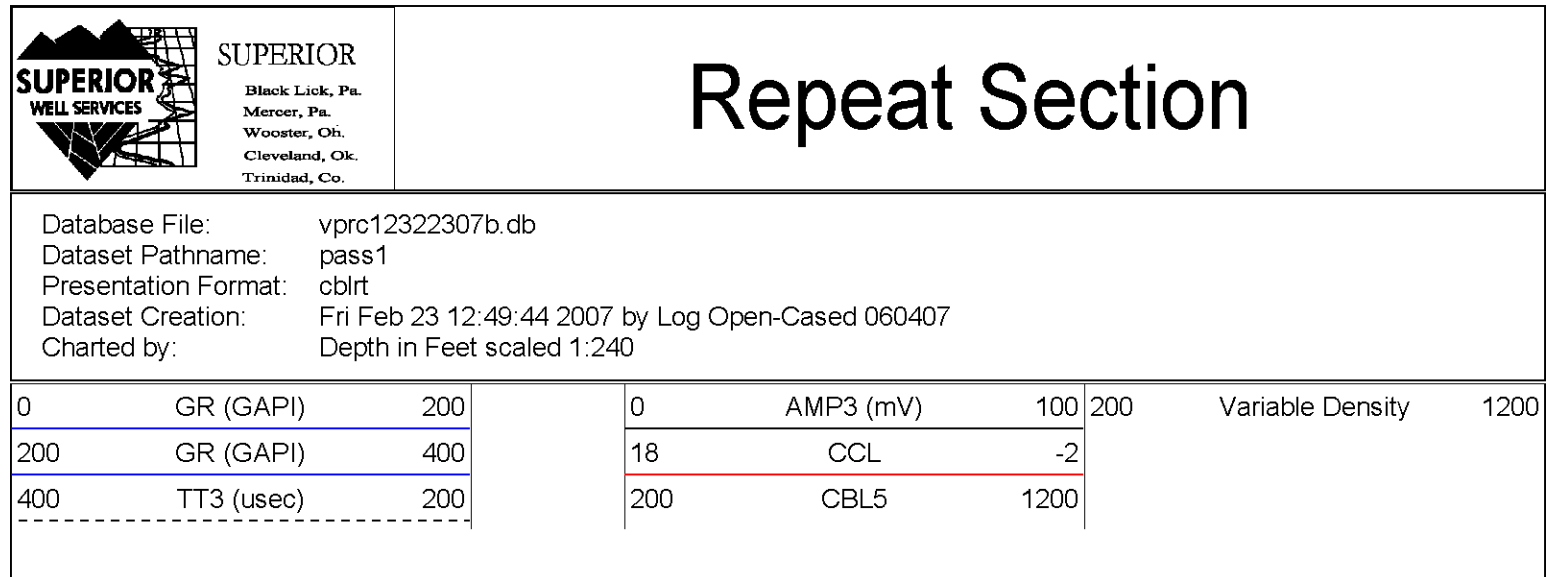
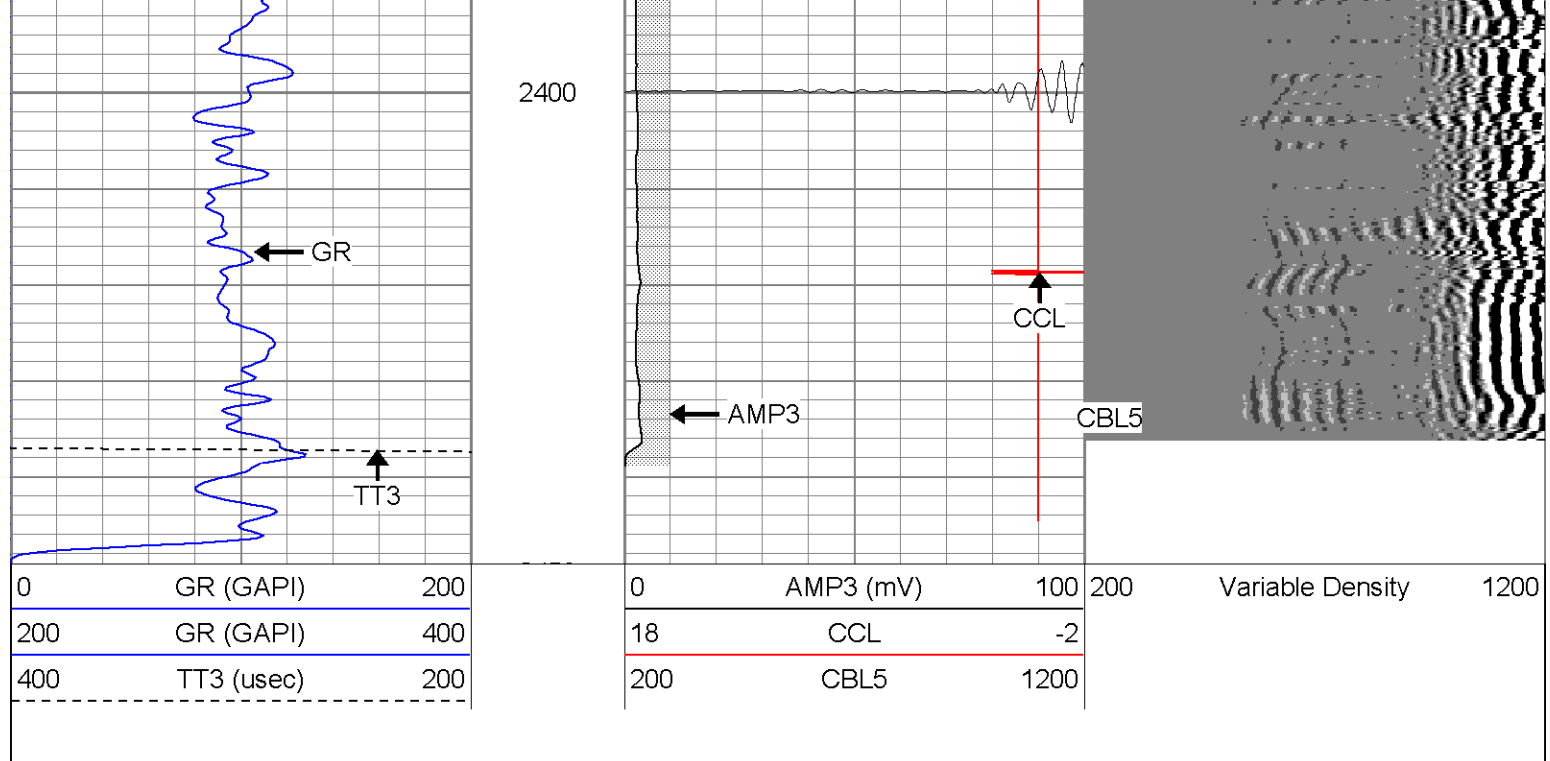
2200

2250

2300

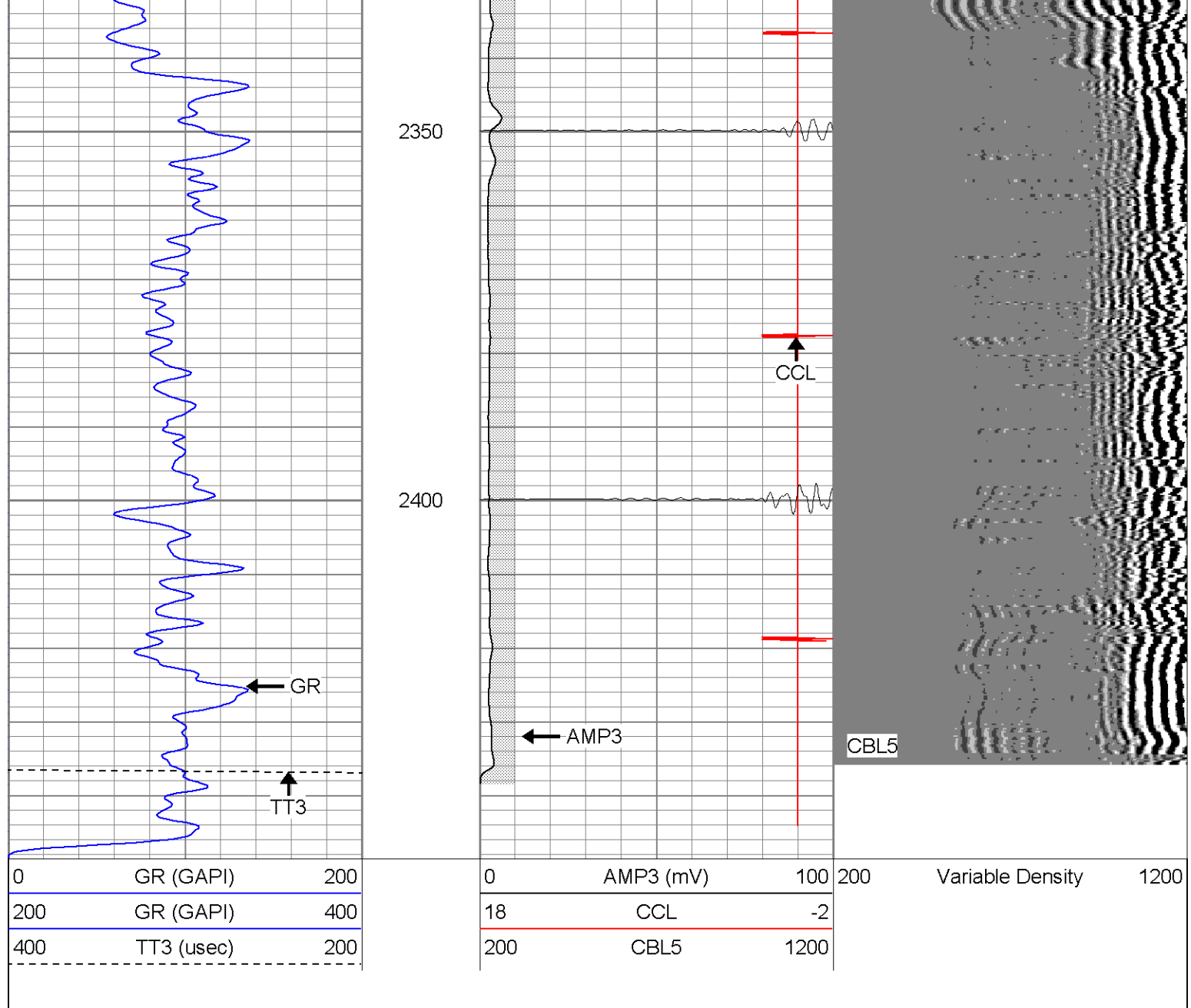
2350





Repeat Section

Database File: vprc12322307b.db
 Dataset Pathname: pass1
 Presentation Format: cblrt
 Dataset Creation: Fri Feb 23 12:49:44 2007 by Log Open-Cased 060407
 Charted by: Depth in Feet scaled 1:240



Calibration Report

Database File: vprc12322307b.db
Dataset Pathname: pass1
Dataset Creation: Fri Feb 23 12:49:44 2007 by Log Open-Cased 060407

Gamma Ray Calibration Report

Serial Number: Titan2.75
Tool Model: 2.75
Performed: Fri Jan 26 10:30:12 2007

Calibrator Value: 200.0 GAPI

Background Reading: 40.0 cps
Calibrator Reading: 240.0 cps

Sensitivity: 1.1000 GAPI/cps

Cement Bond Log Calibration Report

Serial Number: Titan4
Tool Model: 4
Performed: Fri Jan 26 11:14:49 2007

1054.62	ft
5.5	in
3' Spacing	5' Spacing

0	1	mV
85	85	mV
0.00161133	0.0143555	V
1.27	1.65081	V

67.0142	51.3306
0.25	0.263125

Sensor	Offset (ft)	Schematic	Description	Len (ft)	OD (in)	Wt (lb)
CHD	20.38		CHD-None (0)	0.75	1.50	5.00
CENT	19.63		CENT-X (2)	3.00	1.69	25.00
WVF5	12.82		CBL-4 (Titan4)	8.15	2.25	110.00
WVF3	11.82					
CENT	8.48		CENT-X (1)	3.00	1.69	25.00
CCL	4.27		CCL-2.75 (Titan2.75)	1.71	2.75	15.00
GR	1.42		GR-2.75 (Titan2.75) Two Point	3.77	2.75	25.00

Dataset: vprc12322307b.db: field/well/run1/pass1
Total Length: 20.38 ft
Total Weight: 205.00 lb
O.D. 2.75 in