

**Patterson**

**CEMENT BOND  
GAMMA RAY**

Company XTO Energy Inc.  
Well Apache Canyon 07-05  
Field Purgatorie River  
County Las Animas  
State CO

Company XTO Energy Inc.  
Well Apache Canyon 07-05  
Field Purgatorie River  
County Las Animas State CO

Location:	API # : 05 071 08652 00	Other Services
SEC 07 TWP 34S RGE 67W		
Permanent Datum	Ground Level	Elevation 7862'
Log Measured From	Ground Level	
Drilling Measured From	Ground Level	

Date				2/21/06			
Run Number				one			
Depth Driller				2340'			
Depth Logger				2238'			
Bottom Logged Interval				2234'			
Top Log Interval				Surf.			
Open Hole Size				7 7/8"			
Type Fluid				water			
Density / Viscosity				///			
Max. Recorded Temp.				///			
Estimated Cement Top				Surf.			
Time Well Ready				8:50			
Time Logger on Bottom				9:00			
Equipment Number				T244			
Location				Trinidad			
Recorded By				Worley			
Witnessed By							
Borehole Record				Tubing Record			
Run Number	Bit	From	To	Size	Weight	From	To
Casing Record	Size			Wgt/Ft		Top	Bottom
Surface String	8 5/8"					00	229'
Prot. String							
Production String	5 1/2"					00	NA
Liner							

<<< Fold Here >>>

All interpretations are opinions based on inferences from electrical or other measurements and we cannot and do not guarantee the accuracy or correctness of any interpretation, and we shall not, except in the case of gross or willful negligence on our part, be liable or responsible for any loss, costs, damages, or expenses incurred or sustained by anyone resulting from any interpretation made by any of our officers, agents or employees. These interpretations are also subject to our general terms and conditions set out in our current Price Schedule.

Comments

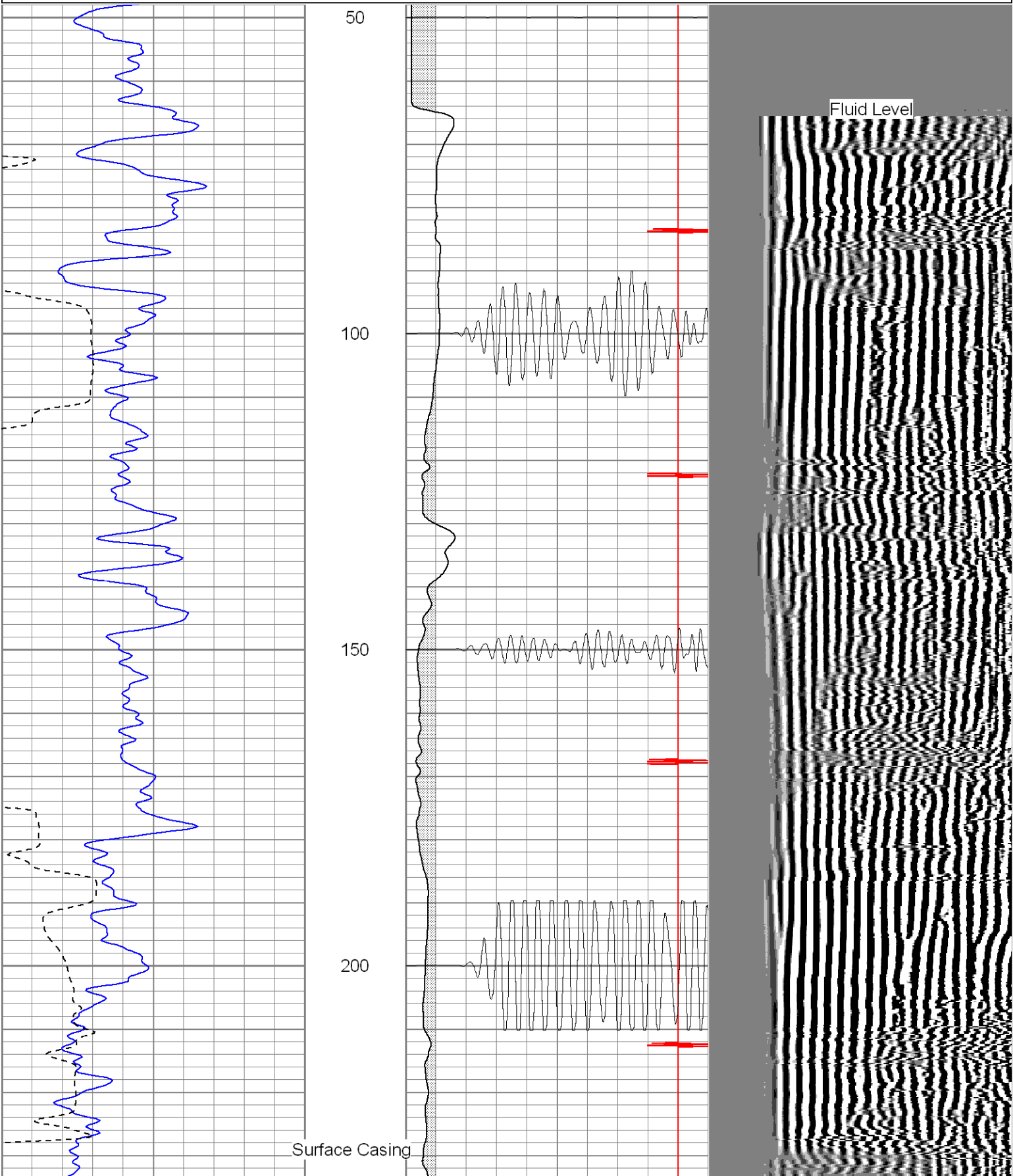
Left Just Before Weston Towards Bosque Del Oso, Right On Torres Canyon,  
Two and Half Miles To Y, At Y Stay Right, One Mile Turn Left To Location.

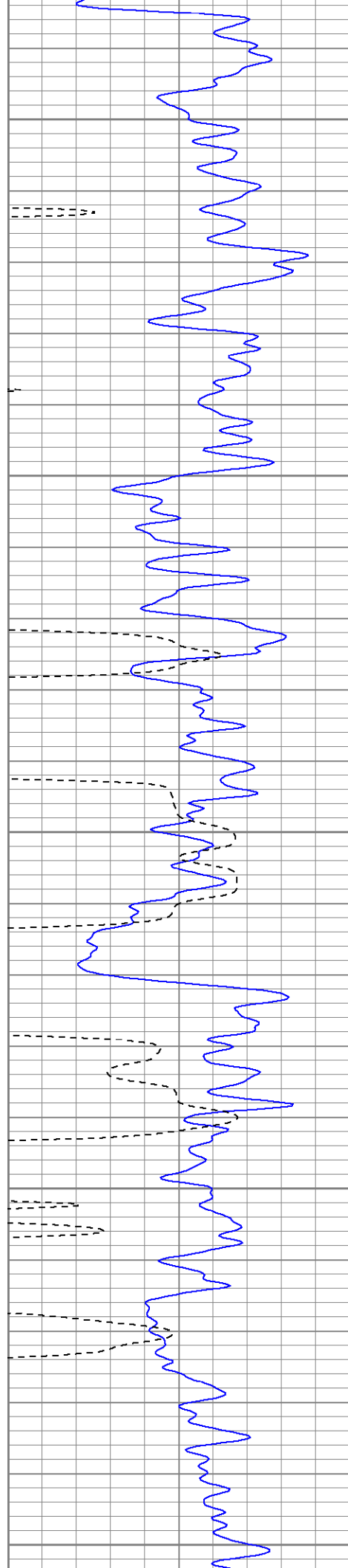
**Patterson**

**Main Pass**

Database File: ac07-05b22106.db  
Dataset Pathname: pass2.1  
Presentation Format: cblrt  
Dataset Creation: Tue Feb 21 10:27:00 2006 by Calc Warrior 7.0 STD Cas  
Charted by: Depth in Feet scaled 1:240

0	GR (GAPI)	200	0	AMP3 (mV)	100	200	Variable Density	1200
400	TT3 (usec)	200	18	CCL	-2			
-----			200	CBL5	1200			





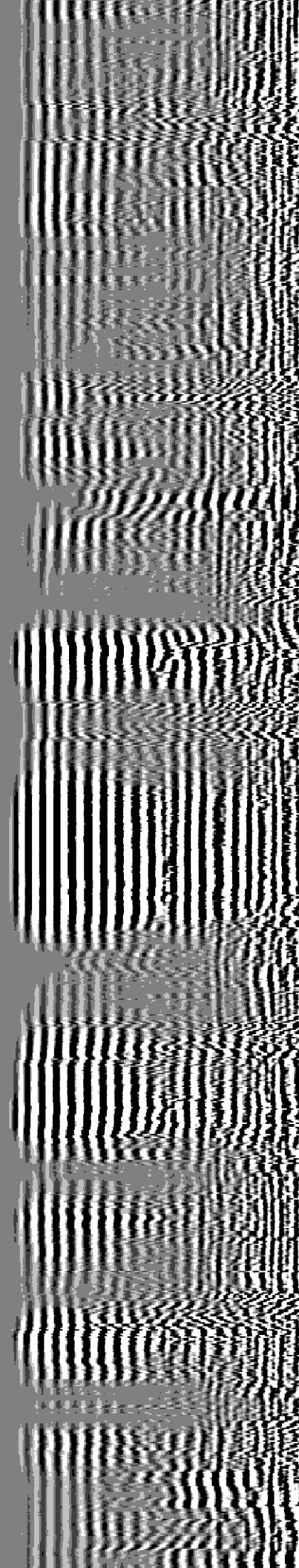
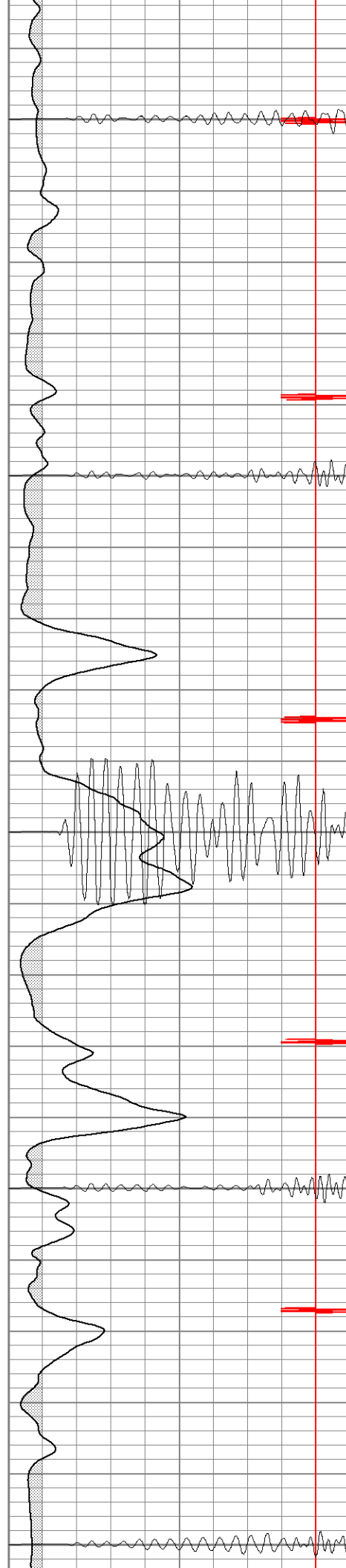
250

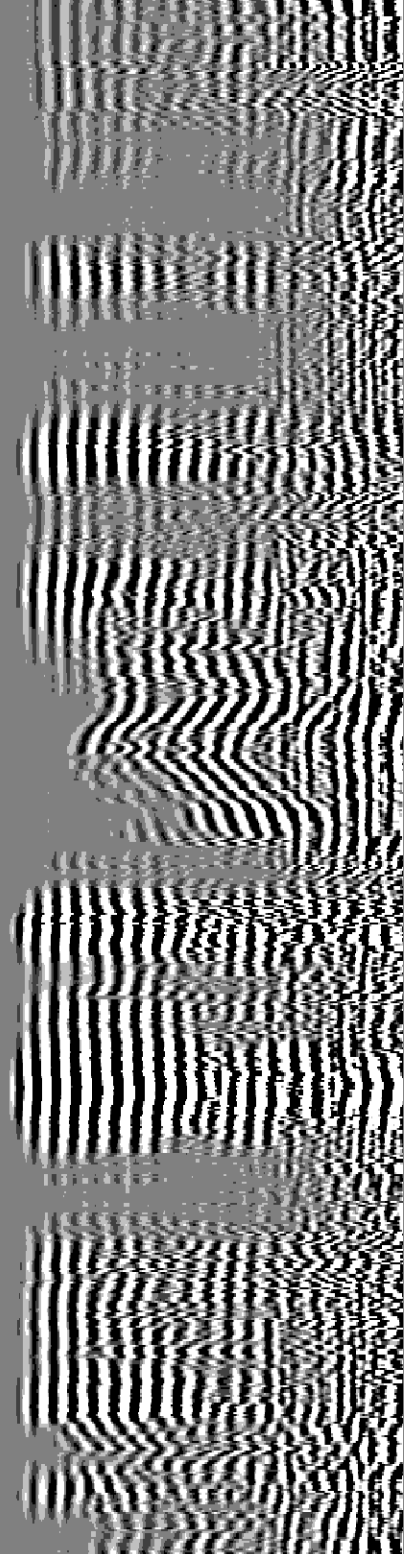
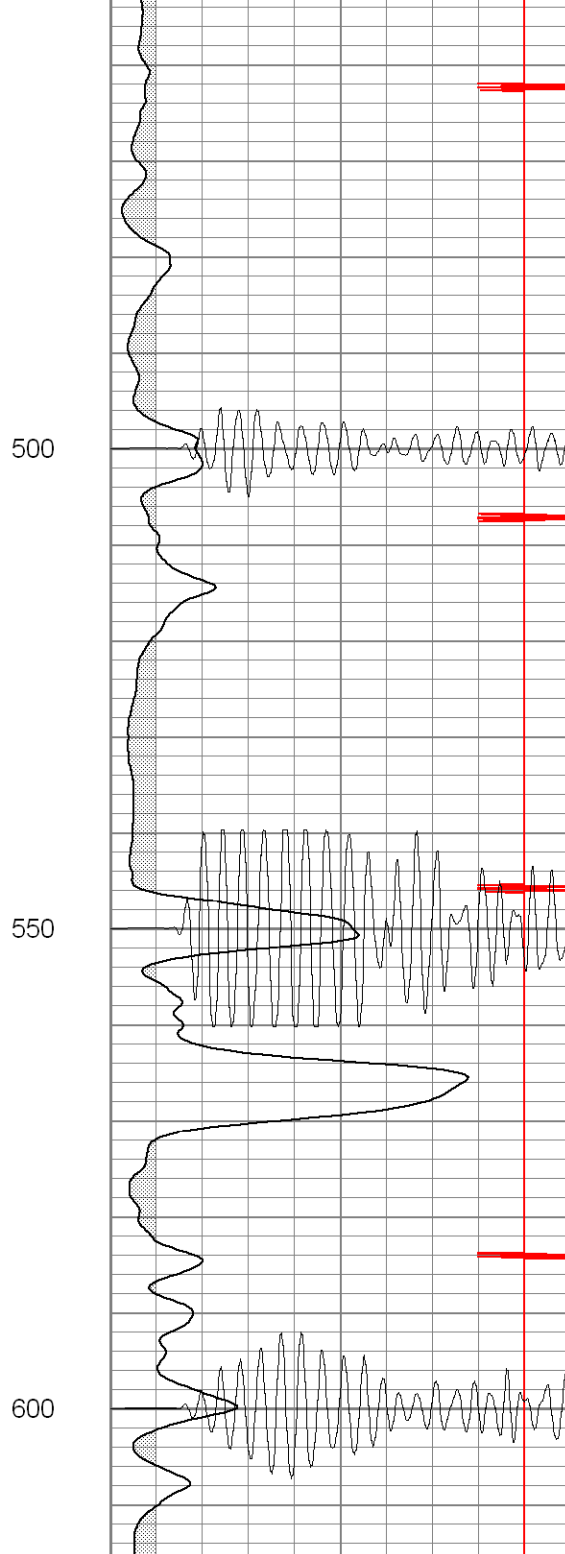
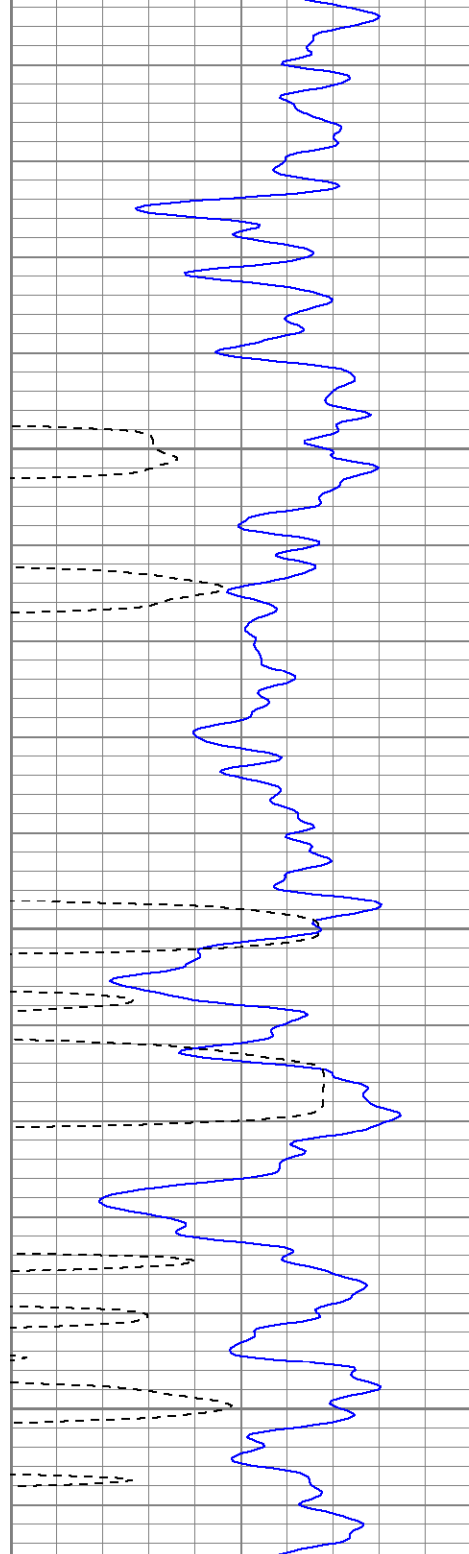
300

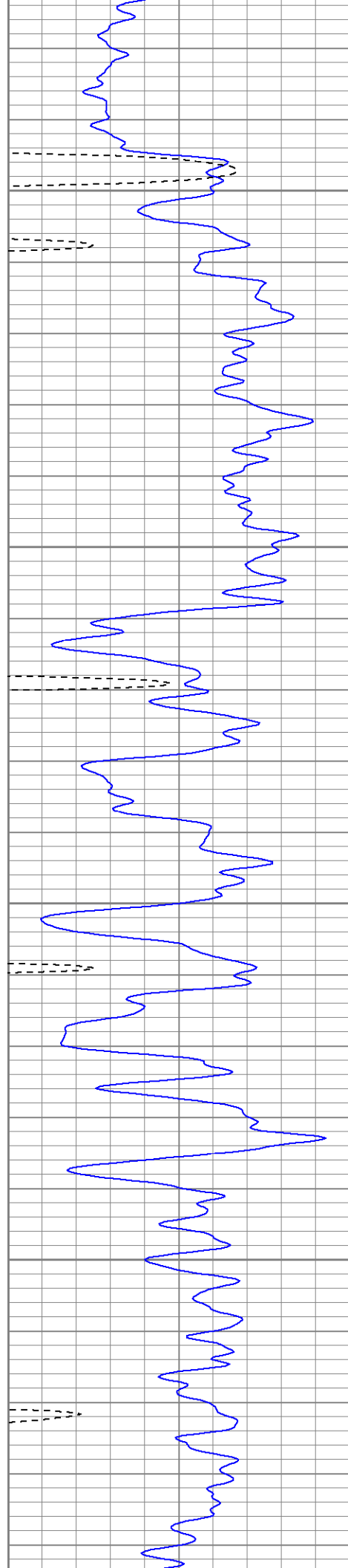
350

400

450





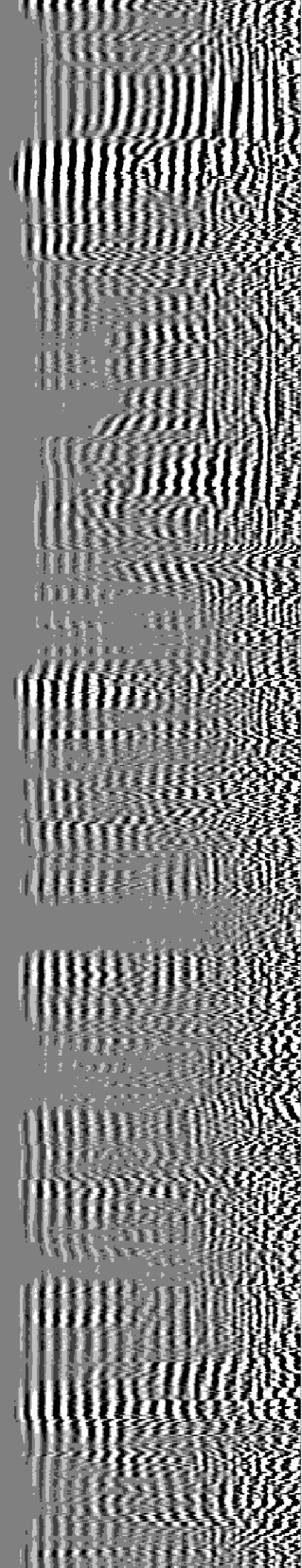
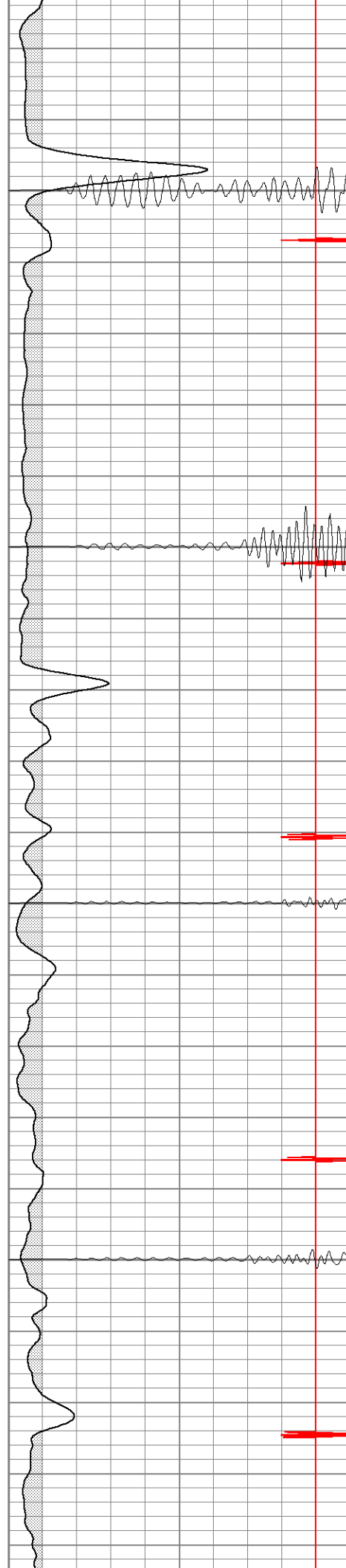


700

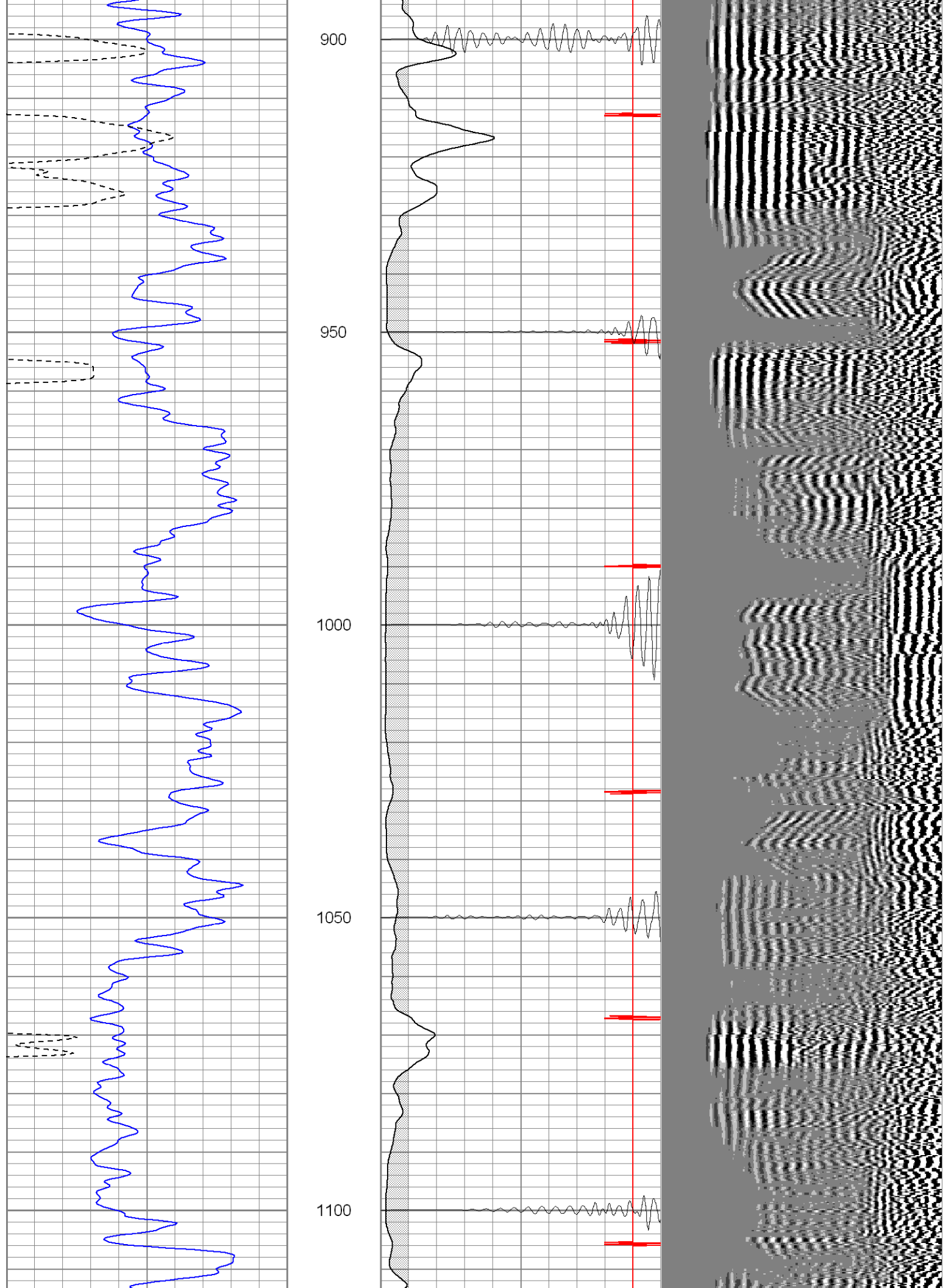
750

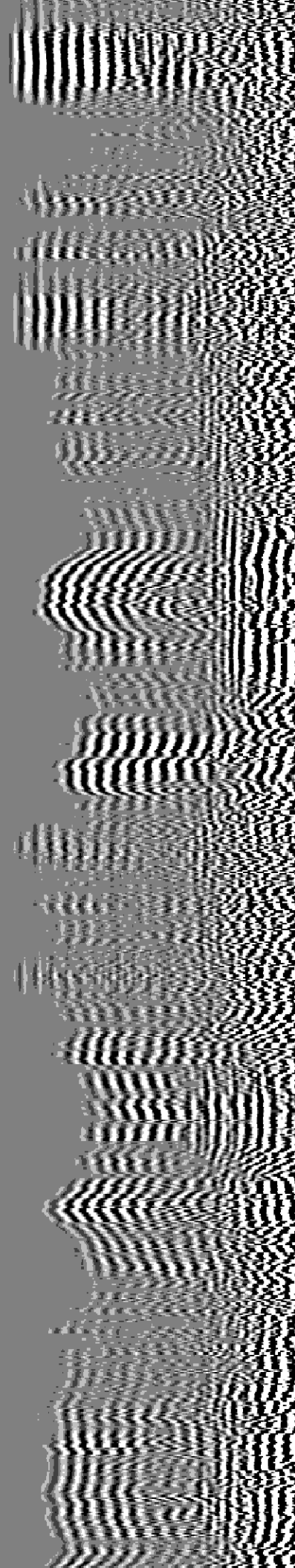
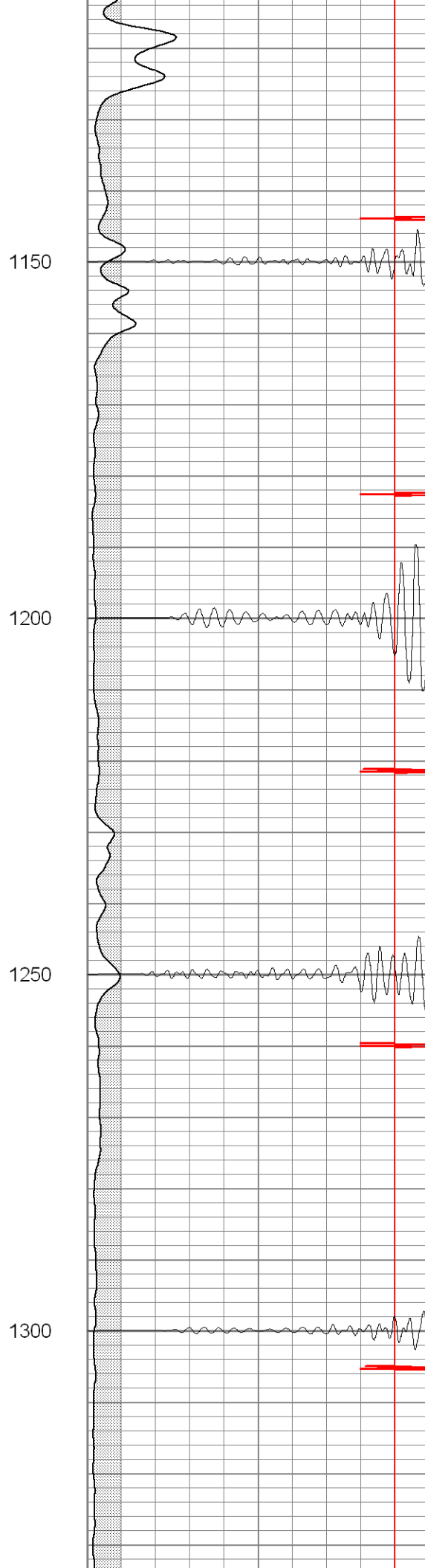
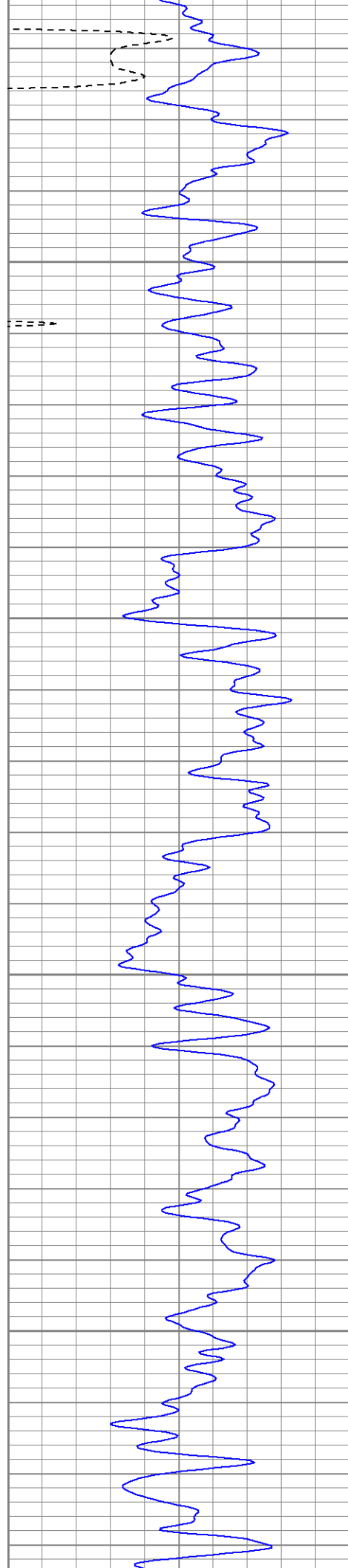
800

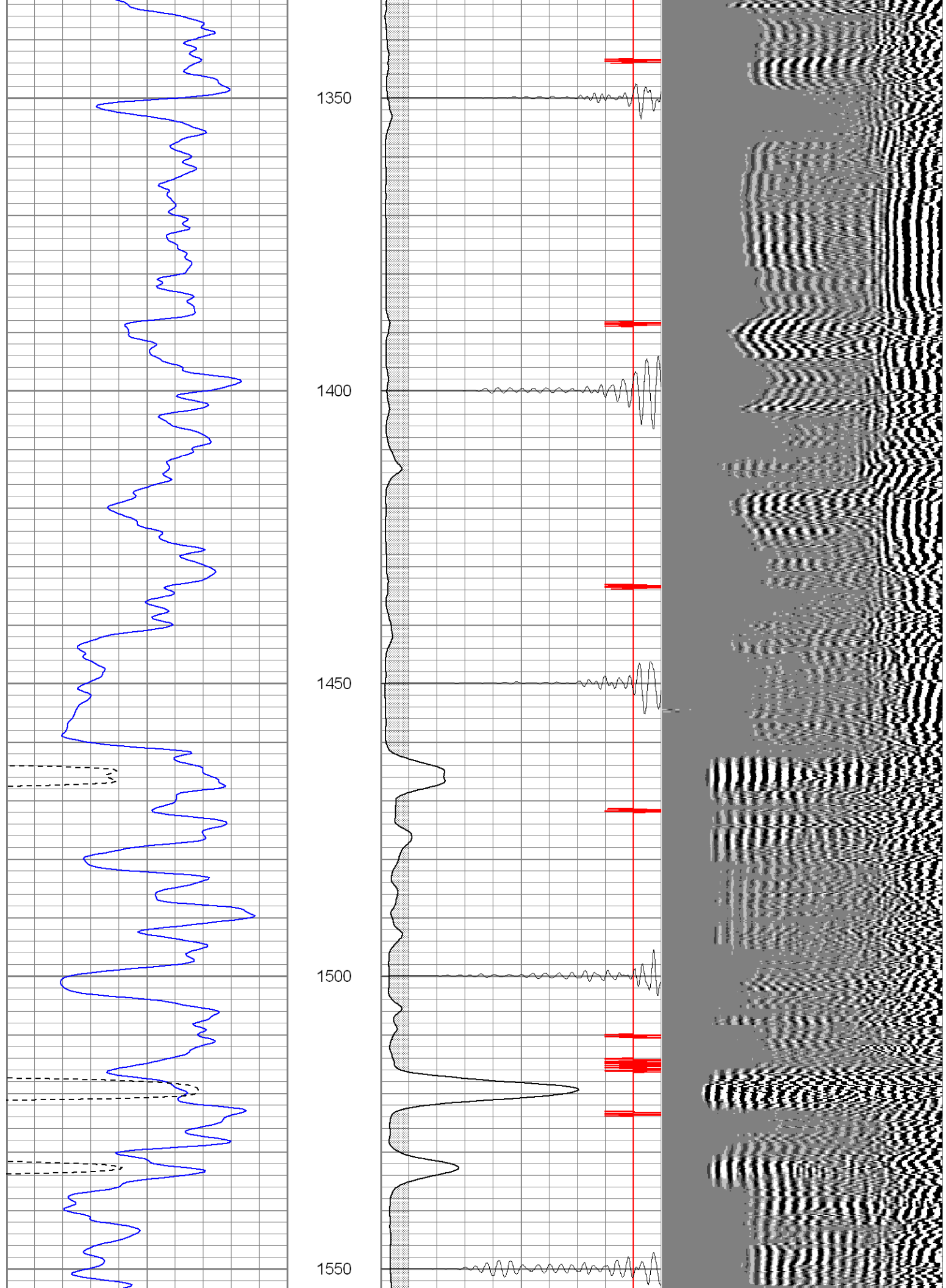
850



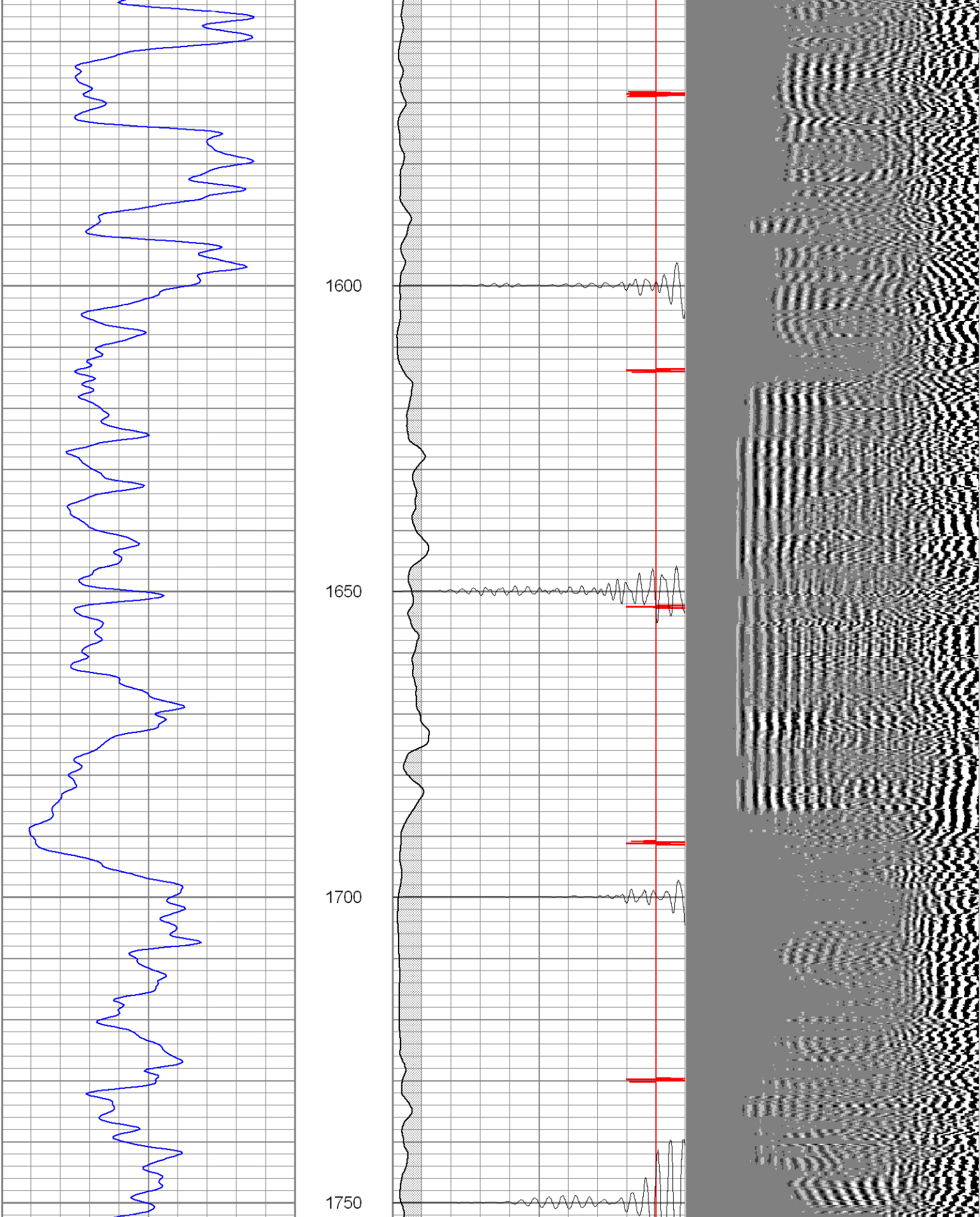


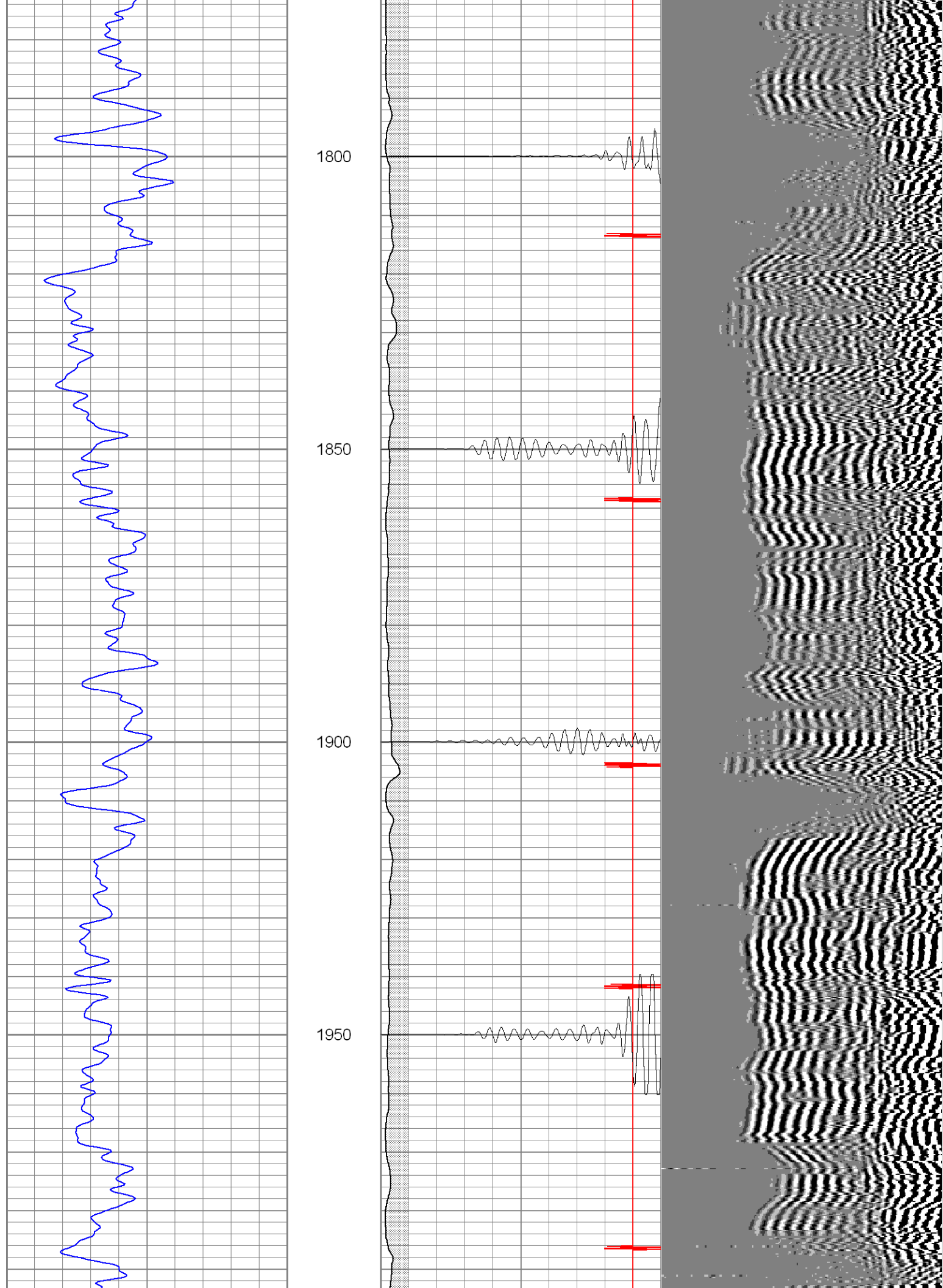


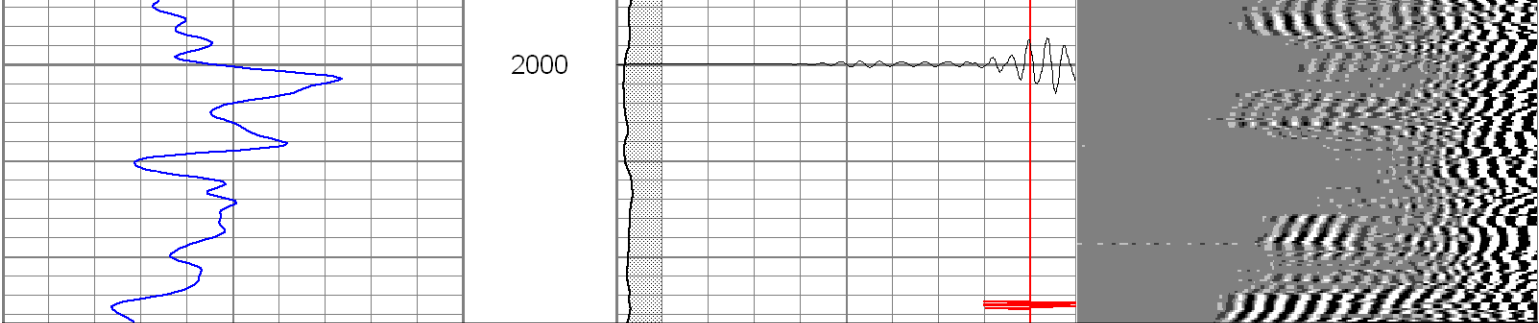


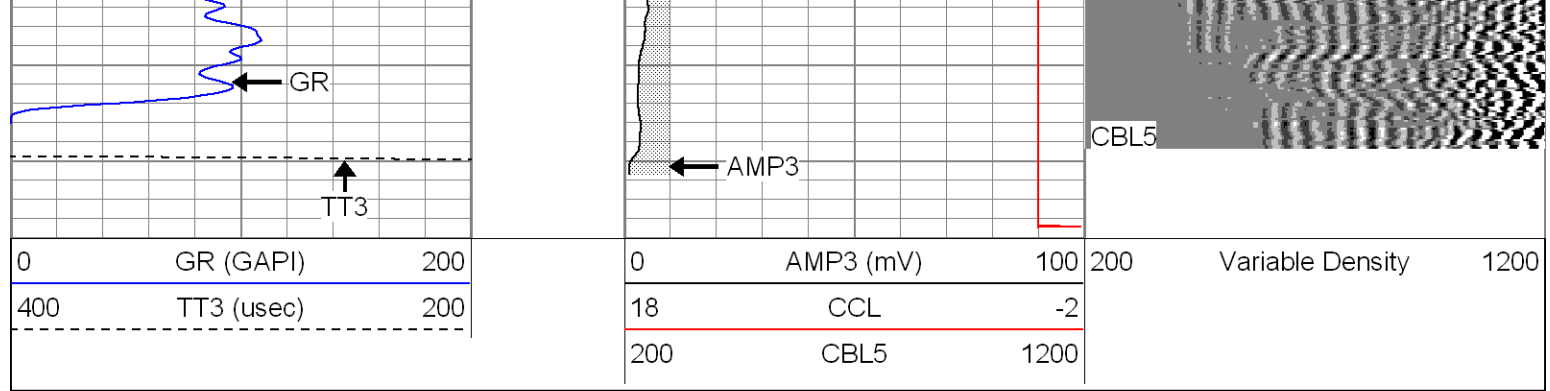








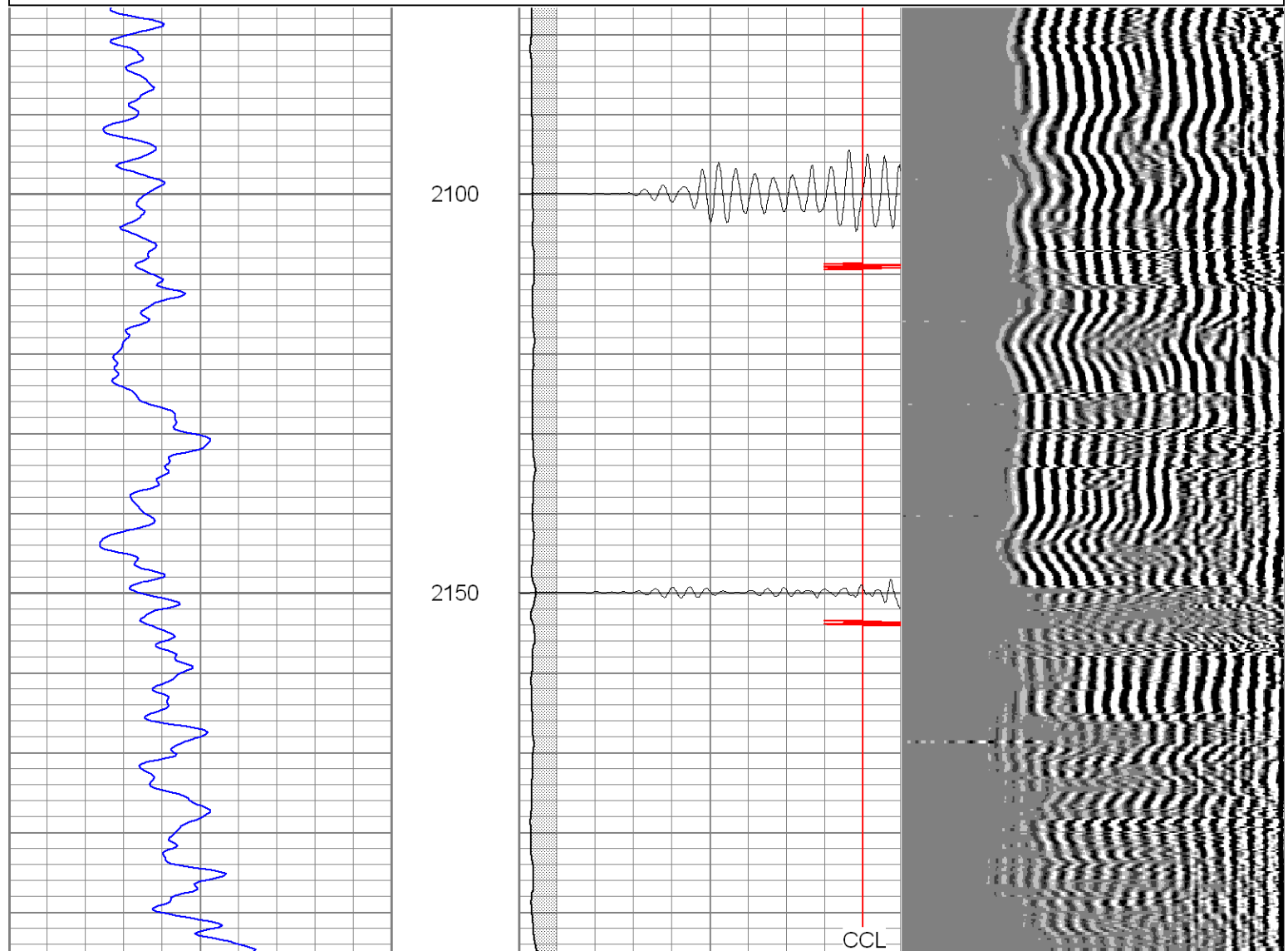
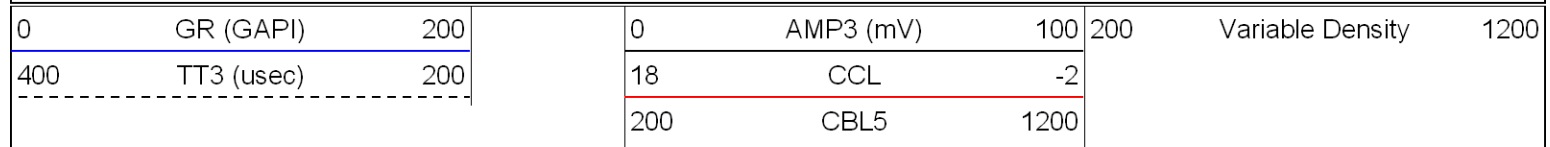




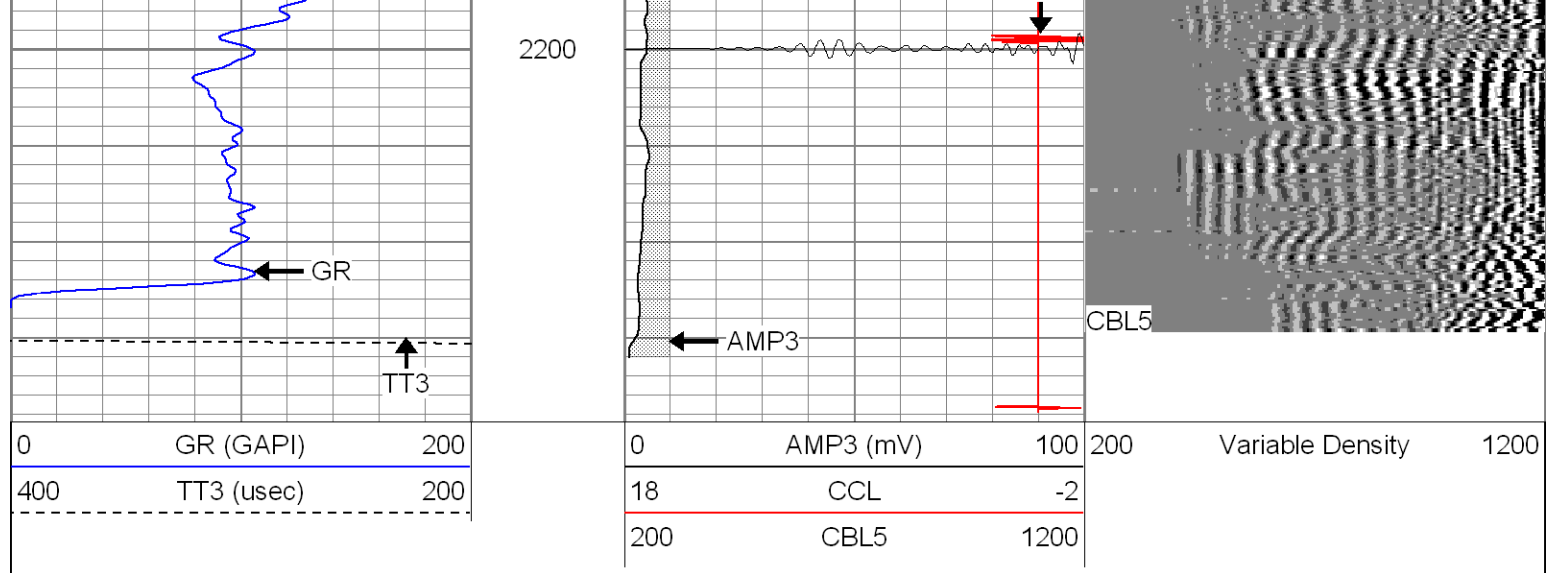
**Patterson**

# Repeat Section

Database File: ac07-05b22106.db  
 Dataset Pathname: pass1.1  
 Presentation Format: cblrt  
 Dataset Creation: Tue Feb 21 10:28:31 2006 by Calc Warrior 7.0 STD Cas  
 Charted by: Depth in Feet scaled 1:240







### Cement Bond Log Calibration Report

Serial Number:	Titan5		
Tool Model:	2		
Performed:	Tue Feb 21 09:07:46 2006		
Depth:	0	ft	
Casing Diameter:	0	in	
	3' Spacing	5' Spacing	
Signal Zero:	0	0	mV
Calibrated Amplitude:	85	85	mV
Reading at Signal Zero:	-0.02	0	V
Reading in Free Pipe:	1.5	1.5	V
Gain:	55.9211	56.6667	
Offset:	1.11842	0	

### Gamma Ray Calibration Report

Serial Number:	Titan5	
Tool Model:	T2	
Performed:	Mon Jan 30 08:59:20 2006	
Calibrator Value:	1.0	GAPI
Background Reading:	0.0	cps
Calibrator Reading:	1.0	cps
Sensitivity:	1.2000	GAPI/cps