



SUPERIOR
Black Lick, Pa.
Mercer, Pa.
Wooster, Oh.
Cleveland, Ok.
Trinidad, Co.

DUAL INDUCTION LOG

Company XTO Energy Inc.
Well New Elk 36-03
Field Purgatoire River
County Las Animas State Colorado

Location: API # : 05 071 09135 00

368' FNL & 1876 FWL

SEC 36 TWP 33S RGE 68W

Permanent Datum Ground Level Elevation 7588'
Log Measured From Ground Level
Drilling Measured From Ground Level

Other Services
CDL
NEUTRON
Elevation
K.B. -----
D.F. -----
G.L. 7588'

Date	3-15-07		
Run Number	One		
Depth Driller	1900'		
Depth Logger	1900'		
Bottom Logged Interval	1896'		
Top Log Interval	Surface Casing		
Casing Driller	8 5/8" @ 688'		
Casing Logger	688'		
Bit Size	7 7/8"		
Type Fluid in Hole	Water		
Density / Viscosity	///		
pH / Fluid Loss	///		
Source of Sample	///		
Rm @ Meas. Temp	///		
Rmf @ Meas. Temp	///		
Rmc @ Meas. Temp	///		
Source of Rmf / Rmc	///		
Rm @ BHT	///		
Time Circulation Stopped	1:00 P.M.		
Time Logger on Bottom	3:15 P.M.		
Maximum Recorded Temperature			
Equipment Number	T701		
Location	Trinidad		
Recorded By	M. Norton		
Witnessed By	Mr. Don Johnson		

<<< Fold Here >>>

All interpretations are opinions based on inferences from electrical or other measurements and we cannot and do not guarantee the accuracy or correctness of any interpretation, and we shall not, except in the case of gross or willful negligence on our part, be liable or responsible for any loss, costs, damages, or expenses incurred or sustained by anyone resulting from any interpretation made by any of our officers, agents or employees. These interpretations are also subject to our general terms and conditions set out in our current Price Schedule.

Comments

Well Directions:

Second Bosque entrance four miles past weston turn left, at Y stay right on Apache Canbyon, drive to camp ground stay left thru gate, first left end on location.



SUPERIOR

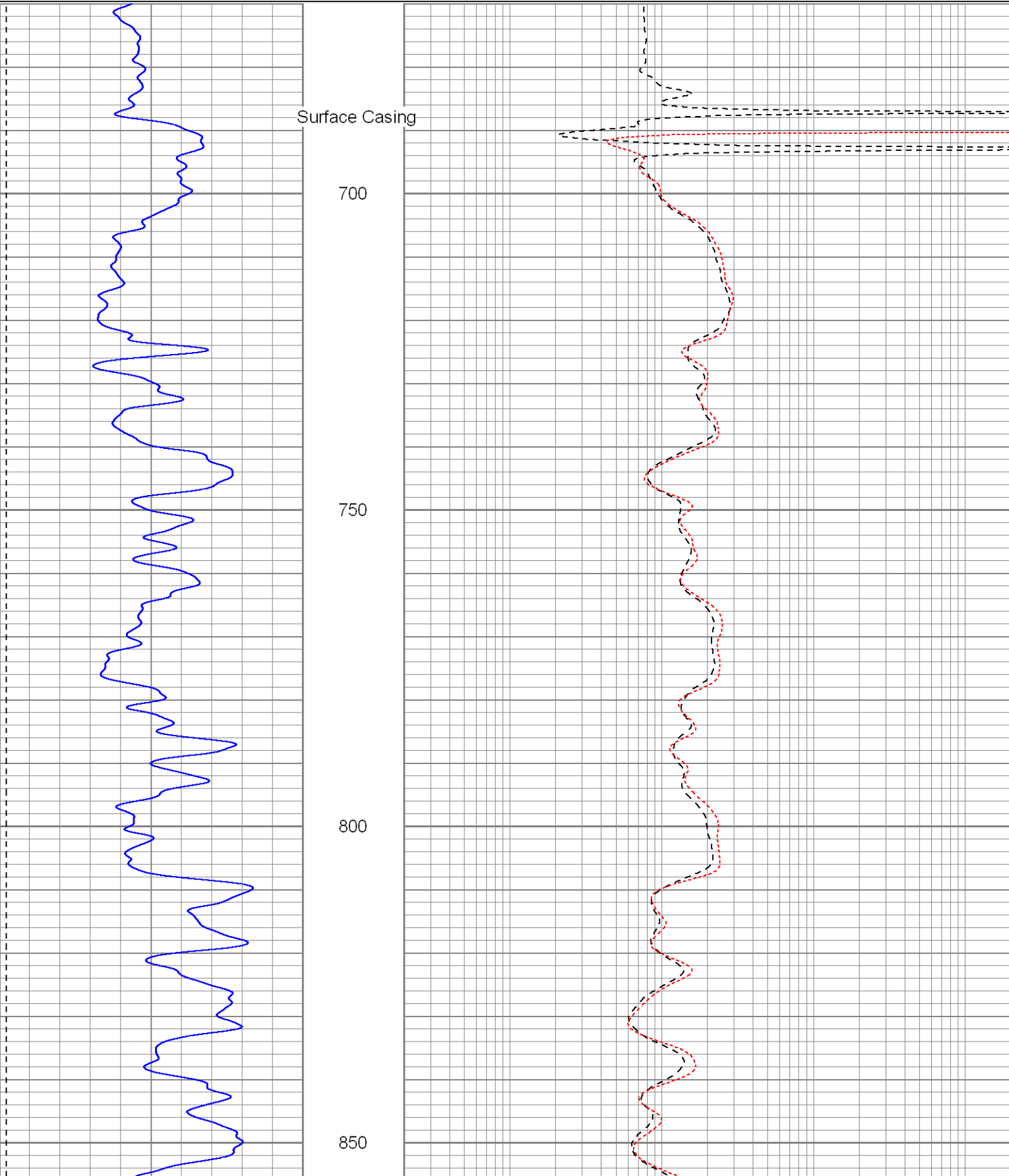
Black Lick, Pa.
Mercer, Pa.
Wooster, Oh.
Cleveland, Ok.
Trinidad, Co.

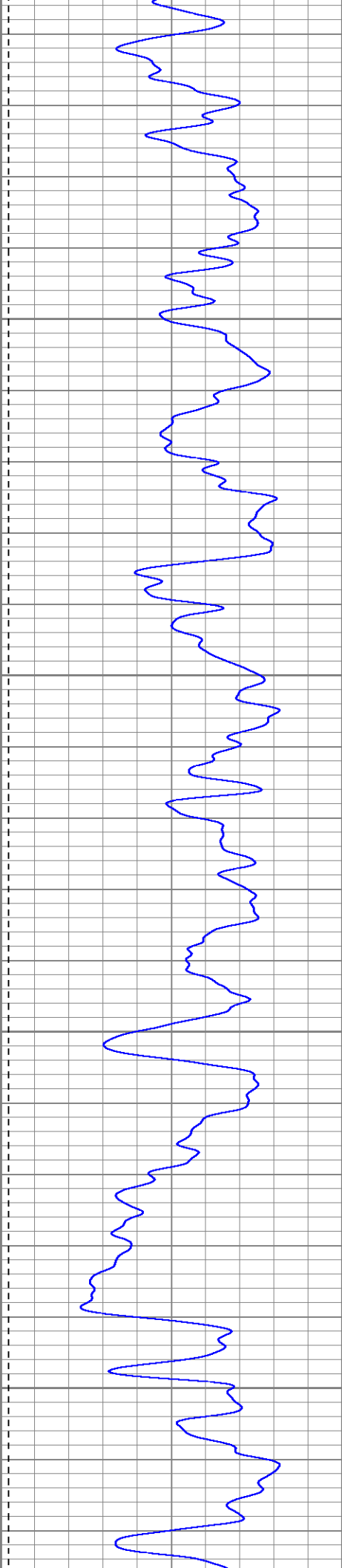
Main Pass

Database File: xtone3603.db
Dataset Pathname: pass2.1
Presentation Format: dil
Dataset Creation: Thu Mar 15 16:27:20 2007 by Calc Open-Cased 061129
Charted by: Depth in Feet scaled 1:240

0	GR (GAPI)	200
-100	SP (mV)	100

0.2	RILD (Ohm-m)	2000
0.2	RILM (Ohm-m)	2000
0.2	RLL3 (Ohm-m)	2000



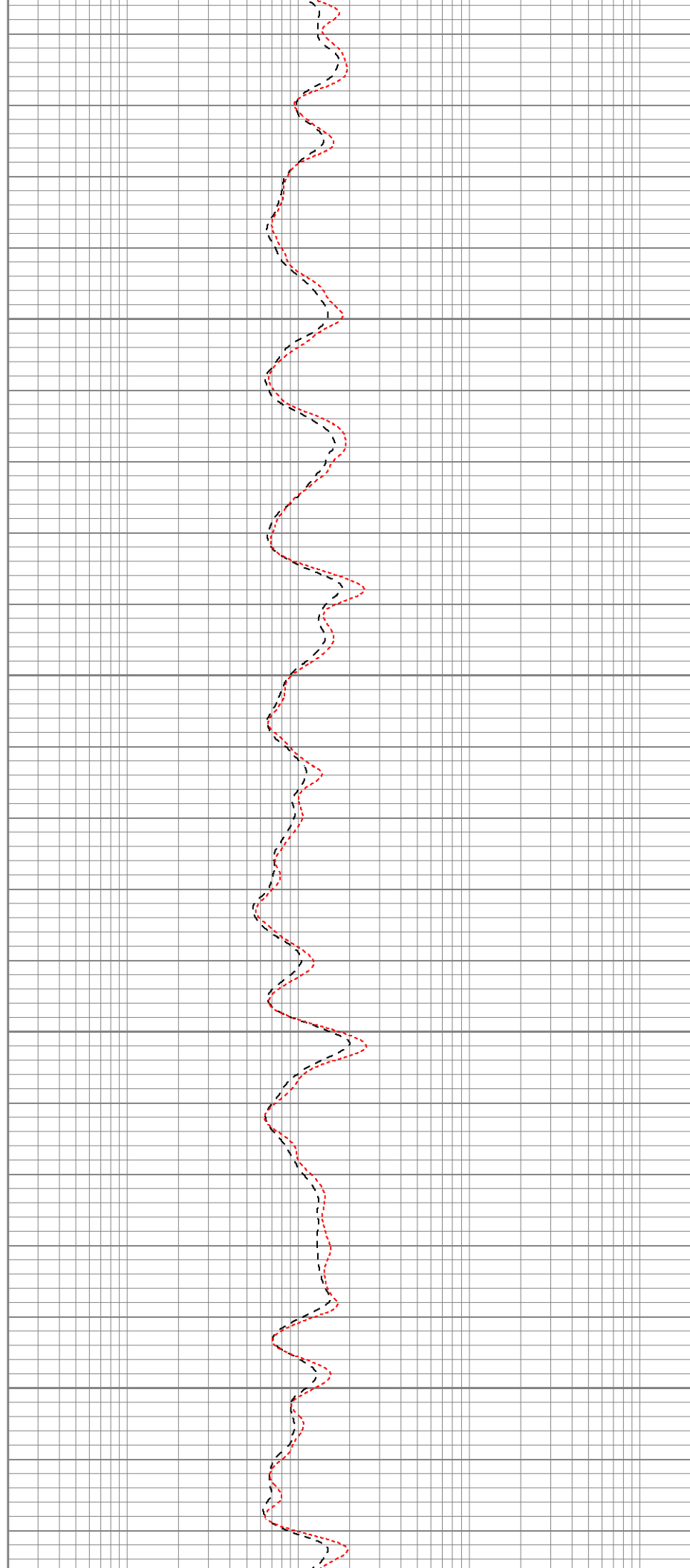


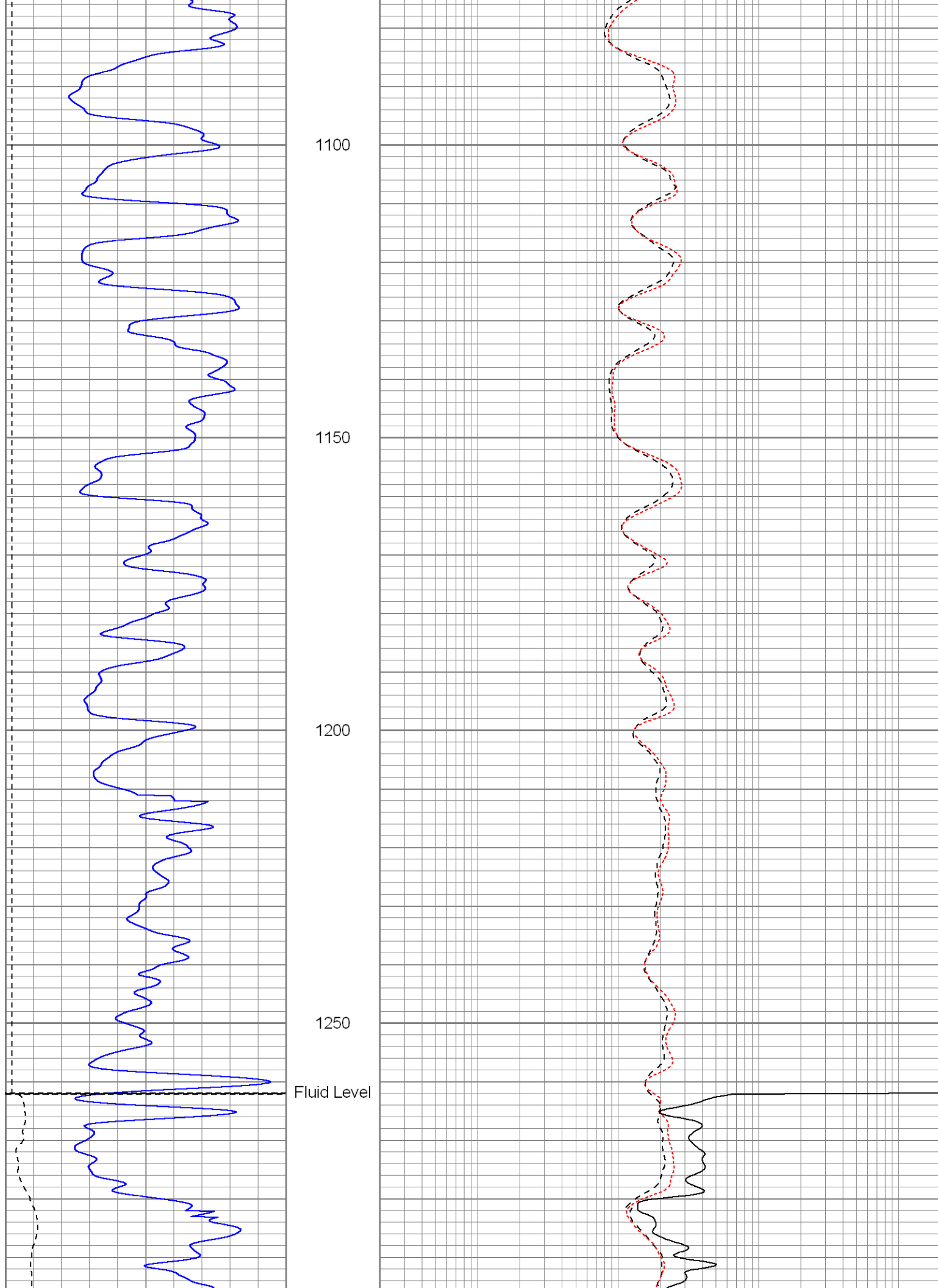
900

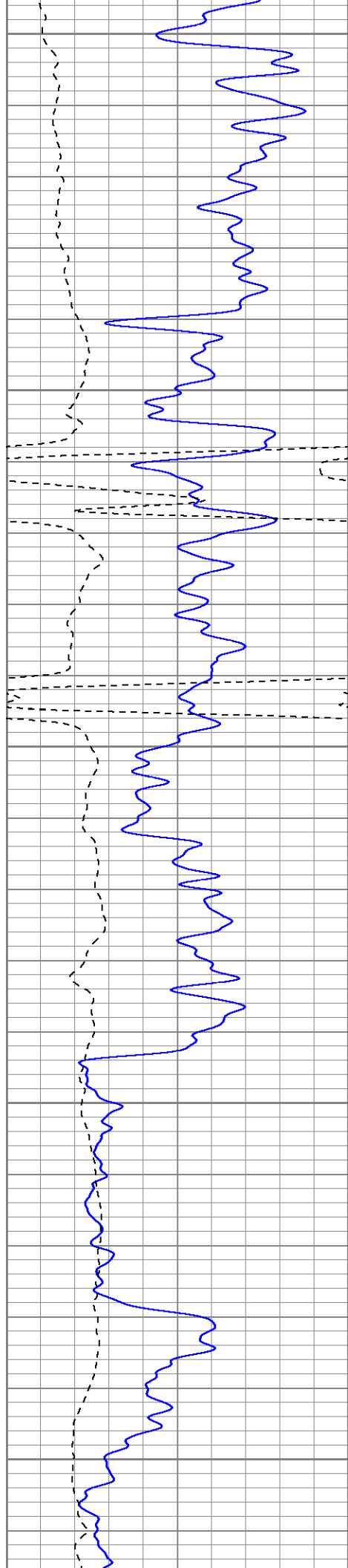
950

1000

1050







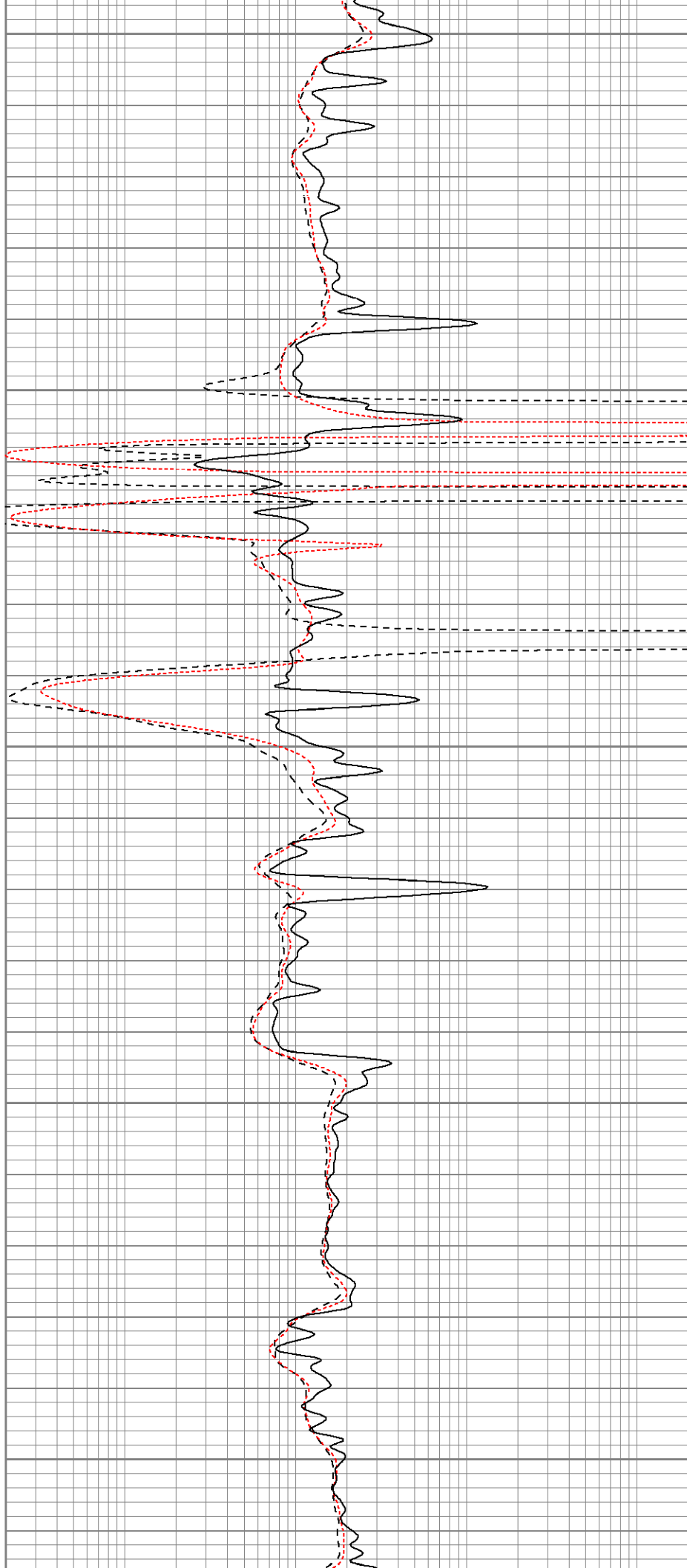
1300

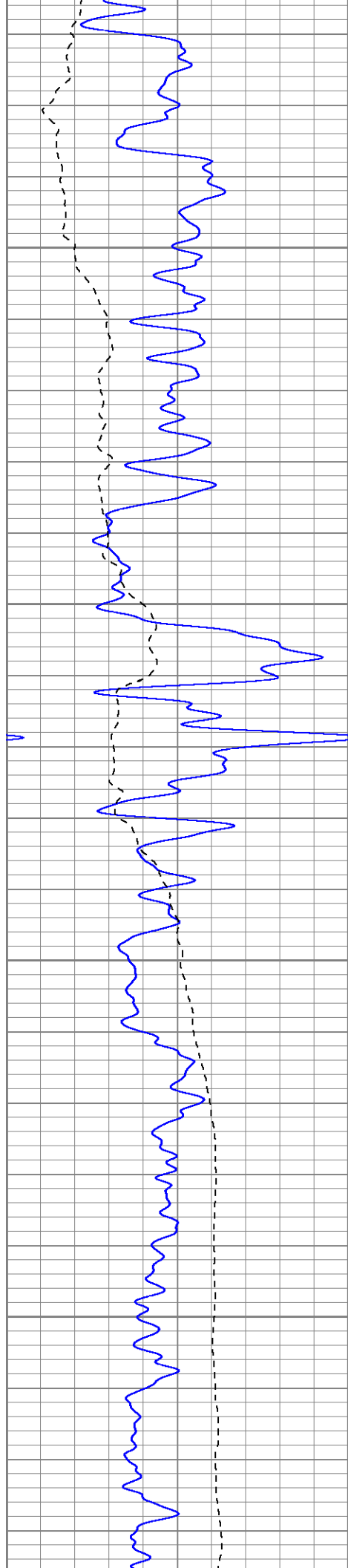
1350

1400

1450

1500



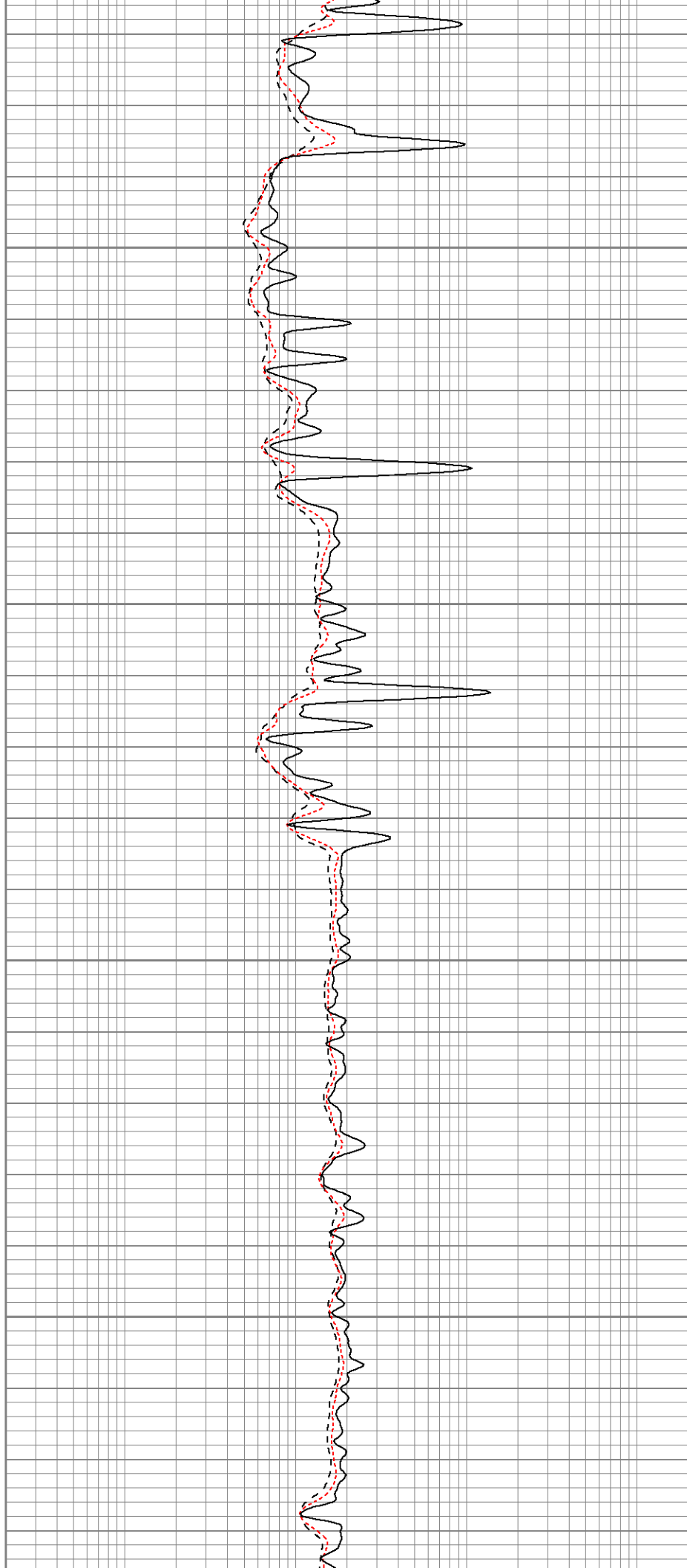


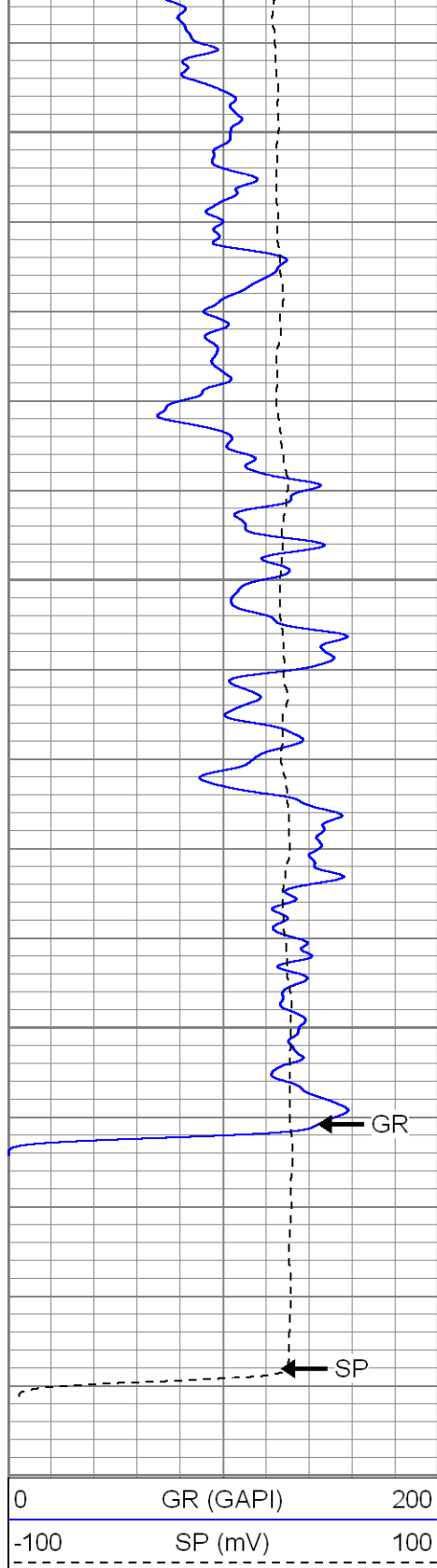
1550

1600

1650

1700



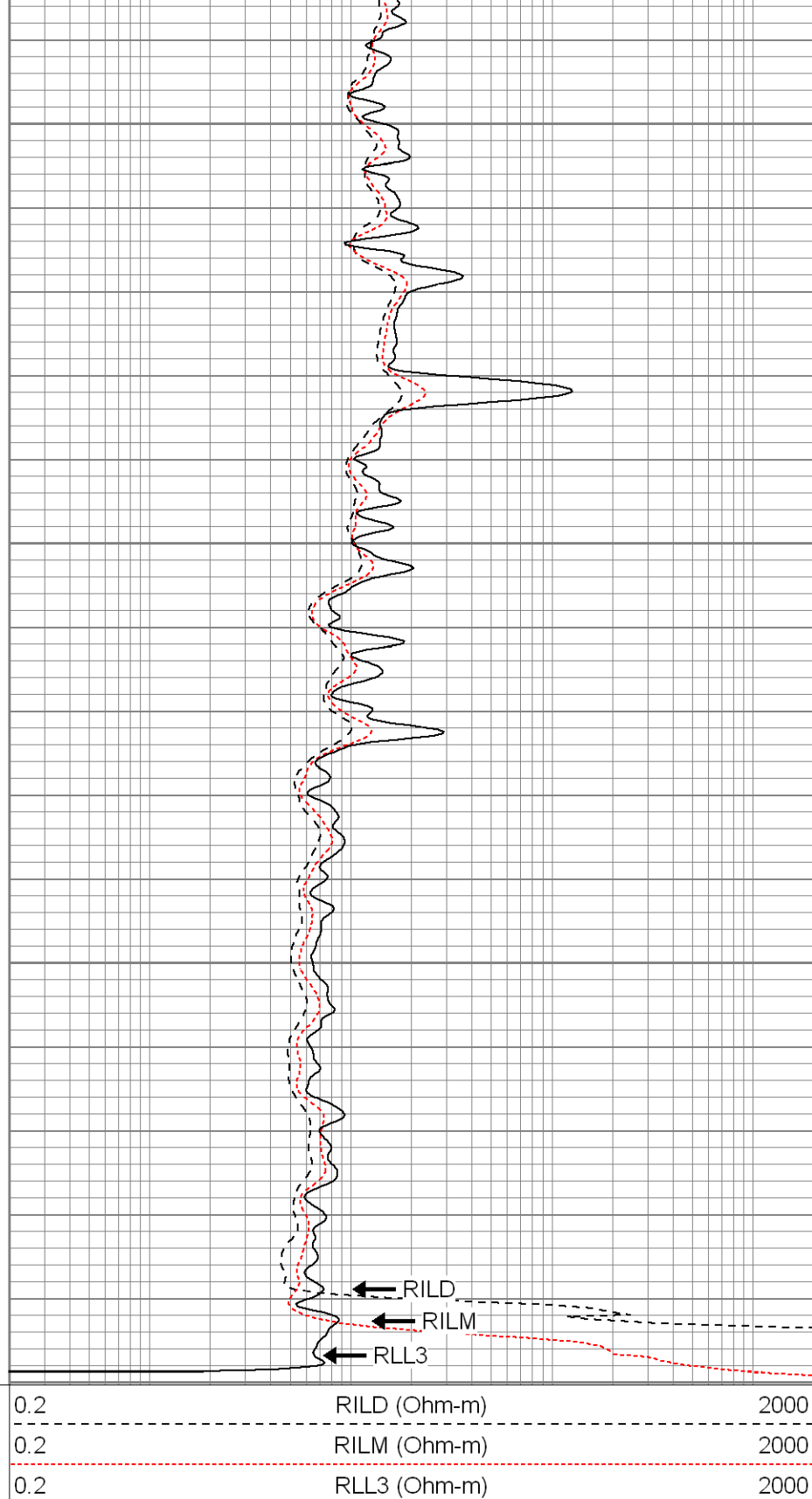


1750

1800

1850

1900



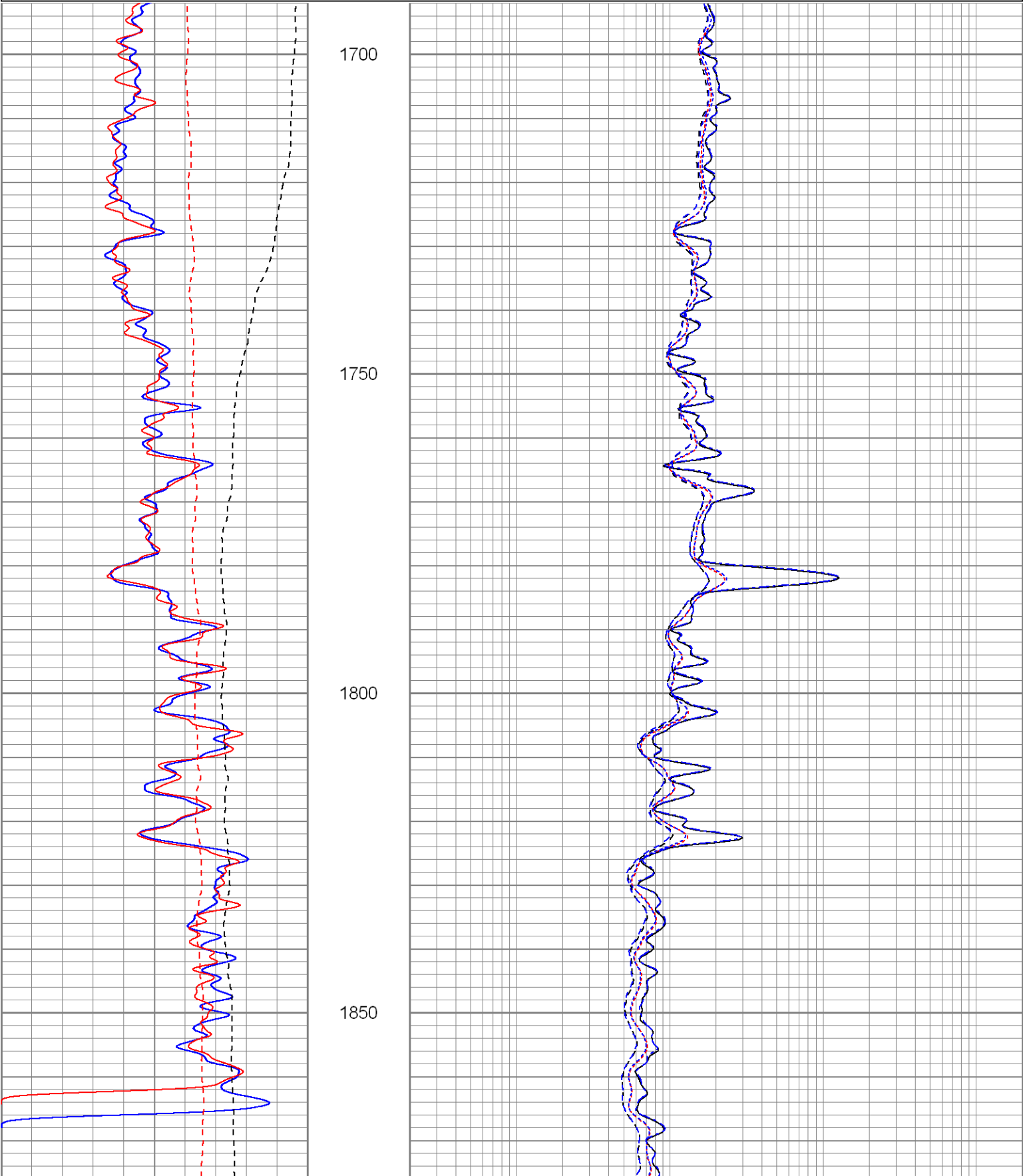
SUPERIOR

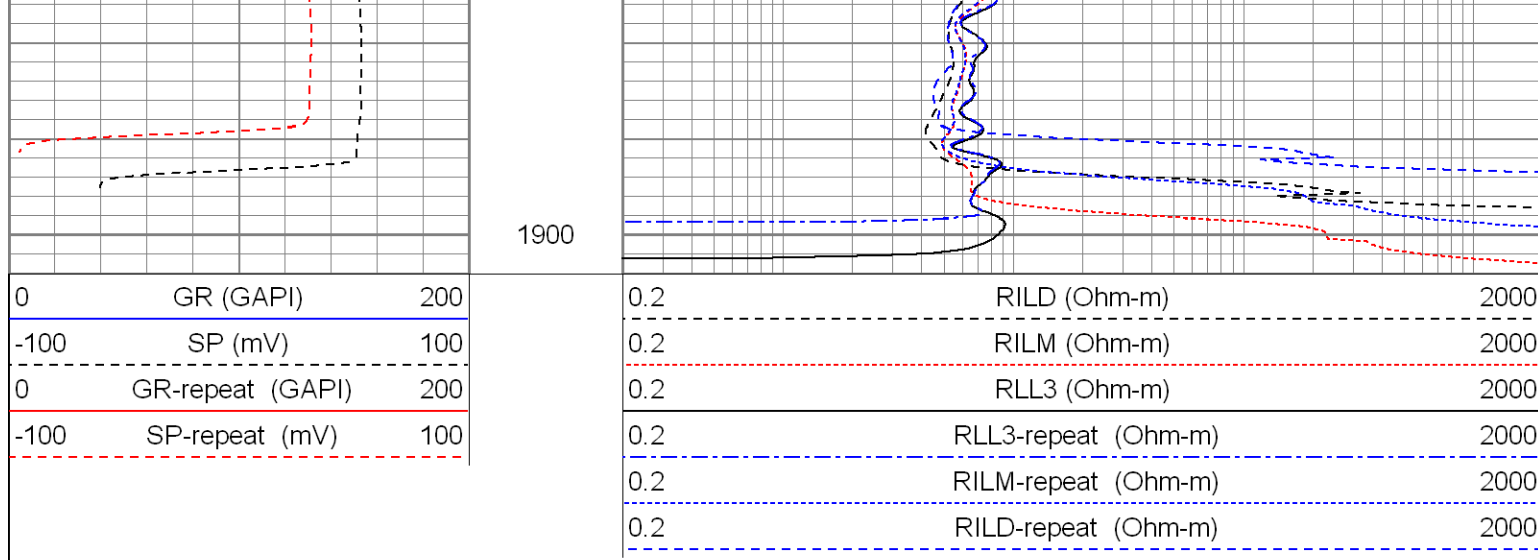
Black Lick, Pa.
 Mercer, Pa.
 Wooster, Oh.
 Cleveland, Ok.
 Trinidad, Co.

Repeat Section

Database File: xtone3603.db
 Dataset Pathname: pass1.1
 Presentation Format: dil
 Dataset Creation: Thu Mar 15 15:45:14 2007 by Calc Open-Cased 061129

Charted by:			Depth in Feet scaled 1:240		
0	GR (GAPI)	200	0.2	RILD (Ohm-m)	2000
-100	SP (mV)	100	0.2	RILM (Ohm-m)	2000
0	GR-repeat (GAPI)	200	0.2	RLL3 (Ohm-m)	2000
-100	SP-repeat (mV)	100	0.2	RLL3-repeat (Ohm-m)	2000
			0.2	RILM-repeat (Ohm-m)	2000
			0.2	RILD-repeat (Ohm-m)	2000





Calibration Report		
Database File:	xtone3603.db	
Dataset Pathname:	pass2	
Dataset Creation:	Thu Mar 15 15:36:42 2007 by Log Open-Cased 061129	

Dual Induction Calibration Report

Serial-Model:	5375-G
Surface Cal Performed:	Sun Feb 18 13:17:13 2007
Downhole Cal Performed:	Sun Feb 18 13:17:56 2007

Surface Calibration								
Loop:	Readings			References			Results	
	Air	Loop		Air	Loop		m	b
Deep	0.008	0.626	V	0.000	500.000	mmho-m	809.126	-6.267
Medium	0.010	0.748	V	0.000	550.000	mmho-m	745.979	-7.704
Internal:	Zero	Cal		Zero	Cal		m	b
Deep	0.008	0.626	V	0.000	500.000	mmho-m	809.454	-6.433
Medium	0.011	0.748	V	0.000	550.000	mmho-m	746.838	-8.278

Downhole Calibration								
Internal:	Readings			References			Results	
	Zero	Cal		Zero	Cal		m	b
Deep	-0.588	499.807	mmho-m	0.163	499.960	mmho-m	0.999	0.750
Medium	-0.423	549.681	mmho-m	0.565	549.932	mmho-m	0.999	0.987
Shallow	2.508	0.017	V	500.000	2.000	Ohm-m	125.000	-3.000

Compensated Density Calibration Report

Serial-Model:	901-2.75POH
Source / Verifier:	/
Master Calibration Performed:	Fri Mar 09 13:09:49 2007

Master Calibration					
	Density		Far Detector	Near Detector	
Magnesium	1.710	g/cc	966.13	494.39	cps
Aluminum	2.590	g/cc	173.30	243.84	cps

Spine Angle = 67.64

Density/Spine Ratio = 0.474

Size

Reading

Small Ring
Large Ring7.95
17.00in
in1.92
4.15V
V

Neutron Calibration Report

Serial Number: 802
 Tool Model: 2.75POH
 Performed: Fri Feb 09 08:32:01 2007

Calibrator Value: 1 NAPI

Calibrator Reading: 1 cps

Sensitivity: 1 NAPI/cps

Gamma Ray Calibration Report

Serial Number: 804
 Tool Model: 2.75POH
 Performed: Fri Feb 09 00:46:24 2007

Calibrator Value: 1.0 GAPI

Background Reading: 0.0 cps
 Calibrator Reading: 1.0 cps

Sensitivity: 0.4000 GAPI/cps

Sensor	Offset (ft)	Schematic	Description	Len (ft)	OD (in)	Wt (lb)
GR	37.84		None	0.75	1.50	5.00
			GR-2.75POH (804) Probe	3.73	2.75	43.00
NEU	32.30		NEU-2.75POH (802) Probe Epithermal	4.75	2.75	58.00
LSD	24.47		CDL-2.75POH (901) Probe	8.43	2.75	106.00
DCAL	24.19					
SSD	23.95		Probe	0.89	3.50	20.00
CILD	10.60		DIL-G (5375) Gearhart	20.83	4.00	345.00
SP	10.60					

