



COMPENSATED DENSITY
COMPENSATED NEUTRON
DUAL INDUCTION

PHOENIX SURVEYS, INC.

Company Merit Energy Company		Location		Other Services			
Well McLeod 8		SHL: 2003' FSL & 1854' FEL NW SE		None			
Field Wattenberg		BHL: 2686' FSL & 1350' FEL					
County Weld		Sec. 29, Twp. 4N, Rge. 66W					
State/Province Colorado							
Permanent Datum	GL	Elevation					
Log Measured From	KB	4770					
Drilling Measured From	KB						
		K.B. 4785					
		D.F. 4784					
		G.L. 4770					
Date	January 13, 2007						
Run Number	1						
Depth Driller	7545						
Depth Logger	7561						
Bottom Logged Interval	7561						
Top Log Interval	Casing						
Casing Driller	418						
Casing Logger	418						
Bit Size	7-7/8"						
Type Fluid in Hole	Chem-Gel						
Density / Viscosity	10.0 / 55						
pH / Fluid Loss	8.5 / 8.0						
Source of Sample	Flowline						
Rm @ Meas. Temp	3.71 @ 60° F						
Rmt @ Meas. Temp	3.08 @ 60° F						
Rmc @ Meas. Temp	4.39 @ 60° F						
Source of Rmt / Rmc	Measure / Calc						
Rm @ BHT	1.01 @ 207° F						
Time Circulation Stopped	2130						
Time Logger on Bottom	1200						
Maximum Recorded Temperature	204° F						
Equipment Number	4078						
Location	Brighton, CO						
Recorded By	Ian Harris						
Witnessed By	Andy Peterson						
	Dik Son						

<<< Fold Here >>>

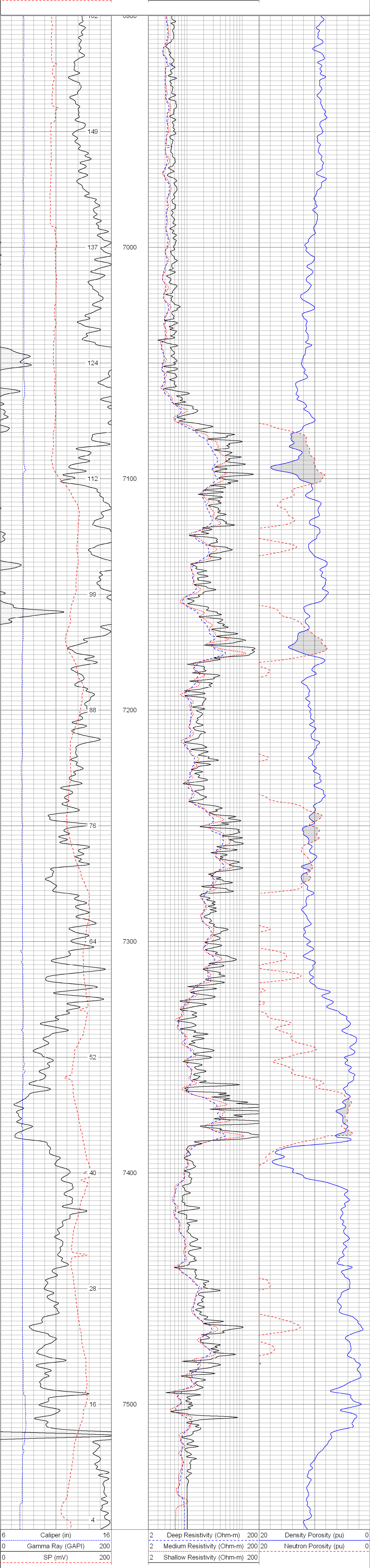
All interpretations are opinions based on inferences from electrical or other measurements and we cannot and do not guarantee the accuracy or correctness of any interpretation, and we shall not, except in the case of gross or willful negligence on our part, be liable or responsible for any loss, costs, damages, or expenses incurred or sustained by anyone resulting from any interpretation made by any of our officers, agents or employees. These interpretations are also subject to our general terms and conditions set out in our current Price Schedule.

Comments

Annular volume calculated for 4.5" casing
Patterson-UTI Drilling Rig 103
Thank you for using Phoenix Surveys!!
API #: 05-123-24162-00
No Repeat Due To Hole Conditions

Database File: 6729.db
Dataset Pathname: pass2.1
Presentation Format: pdc
Dataset Creation: Sat Jan 13 21:39:52 2007 by Calc Open-Cased 051020
Charted by: Depth in Feet scaled 1:240

6	Caliper (in)	16	2	Deep Resistivity (Ohm-m)	200	20	Density Porosity (pu)	0
0	Gamma Ray (GAPI)	200	2	Medium Resistivity (Ohm-m)	200	20	Neutron Porosity (pu)	0
0	SP (mV)	200	2	Shallow Resistivity (Ohm-m)	200			



6	Caliper (in)	16	2	Deep Resistivity (Ohm-m)	200	20	Density Porosity (pu)	0
0	Gamma Ray (GAPI)	200	2	Medium Resistivity (Ohm-m)	200	20	Neutron Porosity (pu)	0
0	SP (mV)	200	2	Shallow Resistivity (Ohm-m)	200			