

Company		XTO Energy, Inc.	
Well		Golden Eagle 34-07	
Field		Purgatoire River	
County		Las Animas	
State		CO	
Company		XTO Energy, Inc.	
Well		Golden Eagle 34-07	
Field		Purgatoire River	
County		Las Animas	
State		CO	
Location:		API # : 05 071 08816 00	
SEC 34 TWP 33S RGE 67W		1793' FNL & 1729' FEL	
Permanent Datum		Ground Level	
Log Measured From		Ground Level	
Drilling Measured From		Ground Level	
Other Services		Elevation	
		K.B. -----	
		D.F. -----	
		G.L. 7196'	
Date		7-14-06	
Run Number		One	
Depth Driller		1885'	
Depth Logger		1826'	
Bottom Logged Interval		1824'	
Top Log Interval		Surface	
Open Hole Size		7 7/8"	
Type Fluid		Water	
Density / Viscosity		///	
Max. Recorded Temp.		101F	
Estimated Cement Top		Surface	
Time Well Ready		7:50AM	
Time Logger on Bottom		8:00AM	
Equipment Number		1875	
Location		Trinidad	
Recorded By		E. Ray	
Witnessed By		Mr. Doug Wood	
Run Number		Borehole Record	
Bit		From	
To		Size	
Weight		From	
To		Tubing Record	
Casing Record		Size	
Surface String		8 5/8"	
Prot. String		Wgt/Ft	
Production String		Top	
Liner		Bottom	
		218'	
		00	
		N/A	

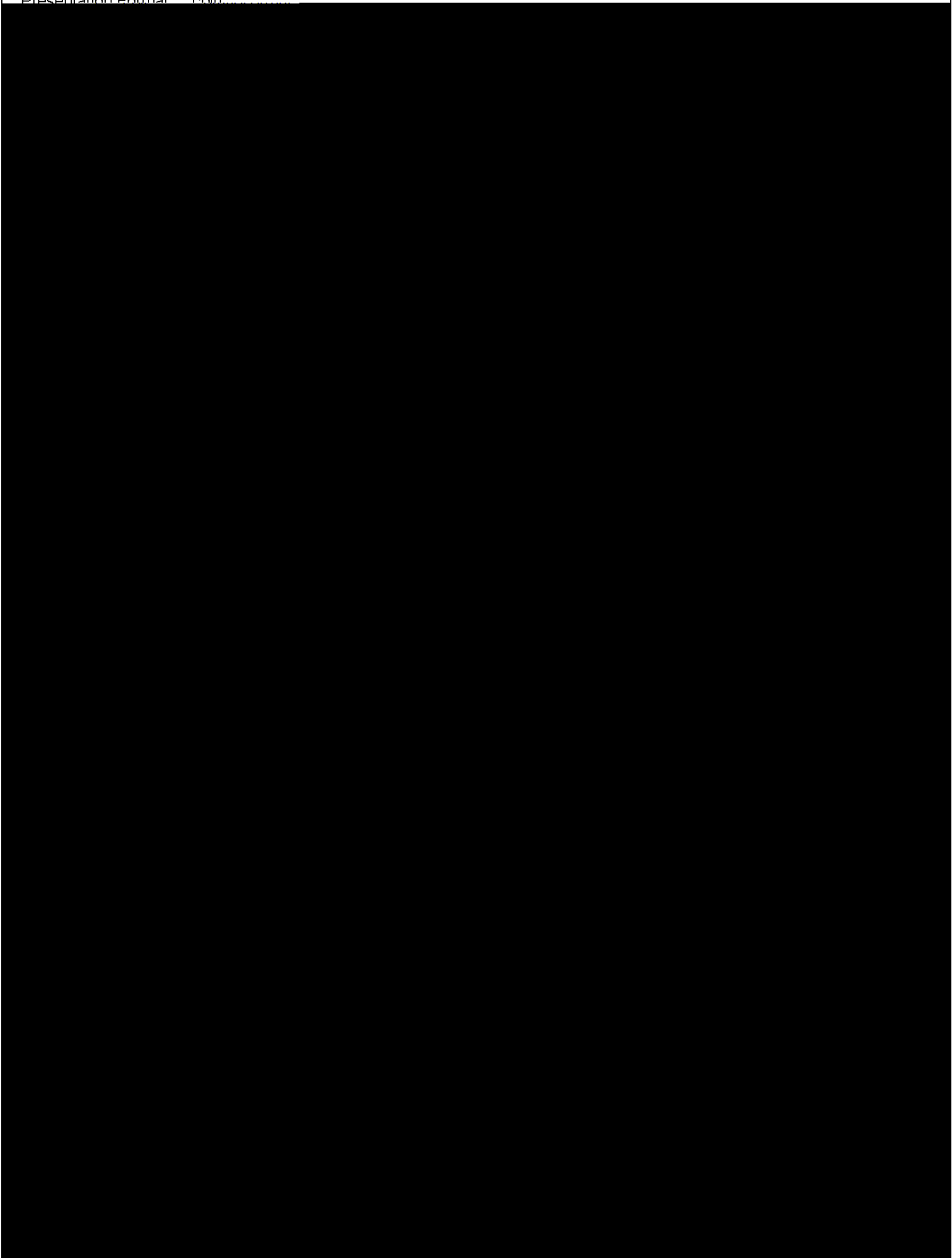
<<< Fold Here >>>

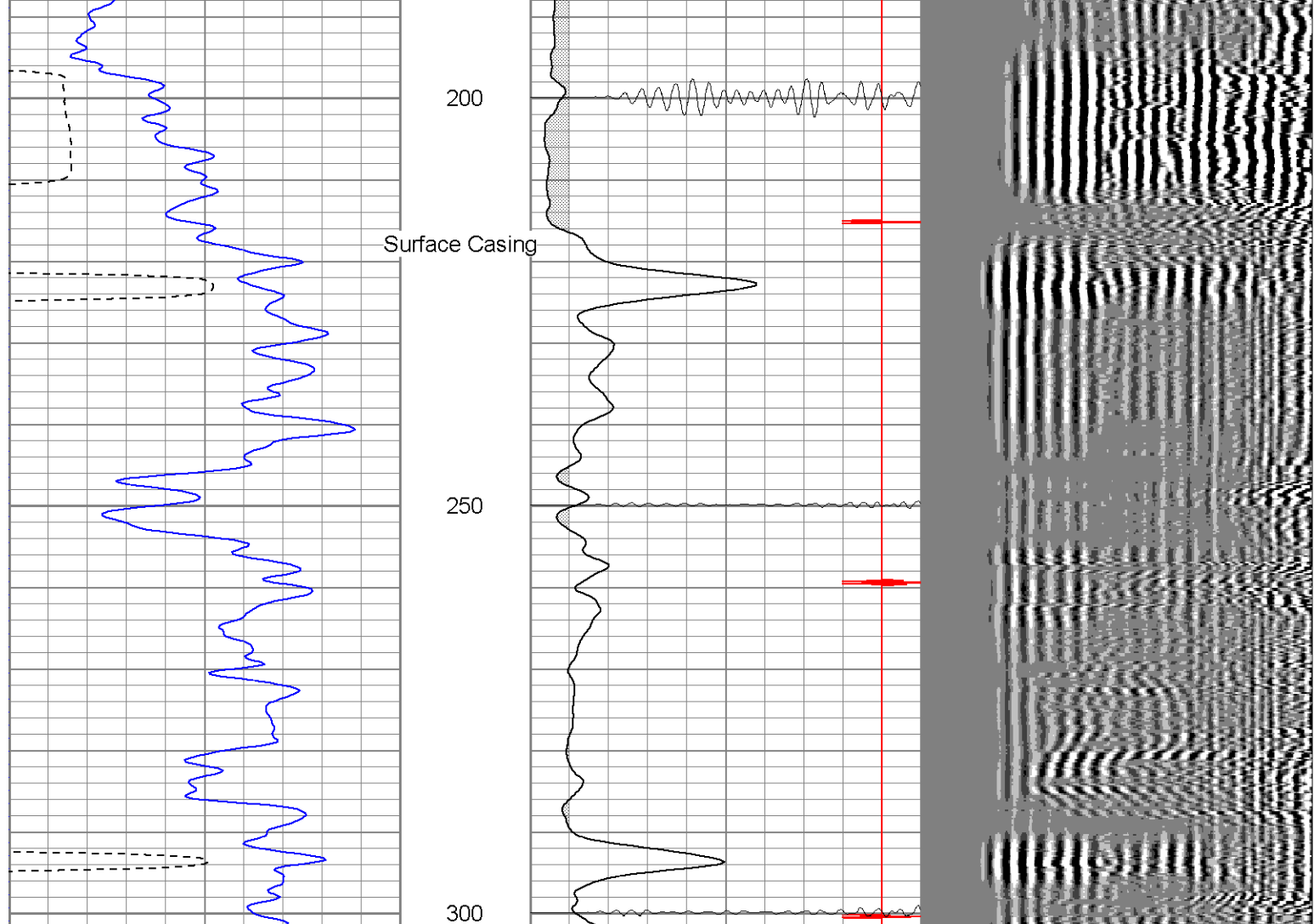
All interpretations are opinions based on inferences from electrical or other measurements and we cannot and do not guarantee the accuracy or correctness of any interpretation, and we shall not, except in the case of gross or willful negligence on our part, be liable or responsible for any loss, costs, damages, or expenses incurred or sustained by anyone resulting from any interpretation made by any of our officers, agents or employees. These interpretations are also subject to our general terms and conditions set out in our current Price Schedule.

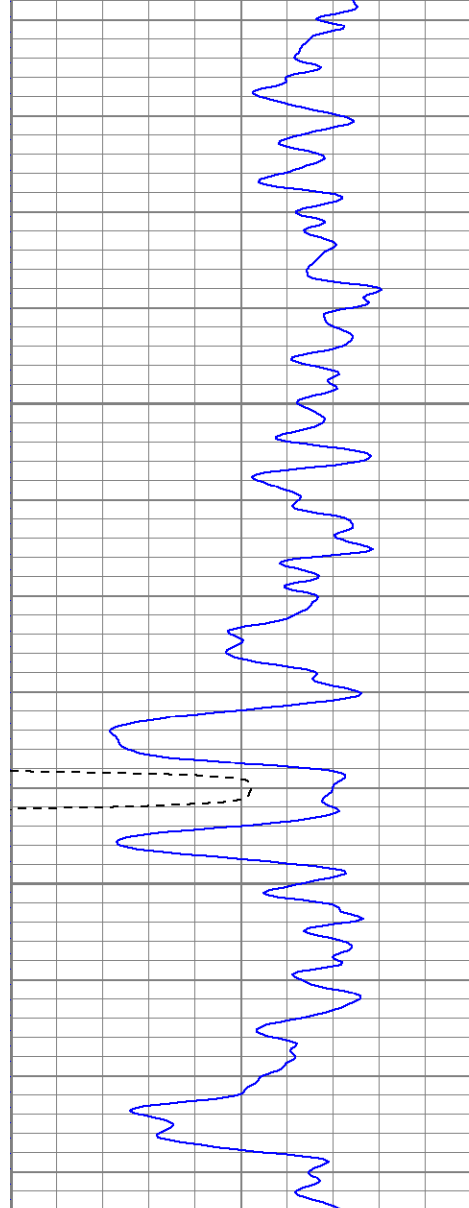
Comments

Turn Left @ 1st Bosque, Right @ Cherry Canyon, @ first Y Stay Right,
Stay on Main Road, End on Location

Database File: ge340771406b.db
Dataset Pathname: pass2
Presentation Format: chlr

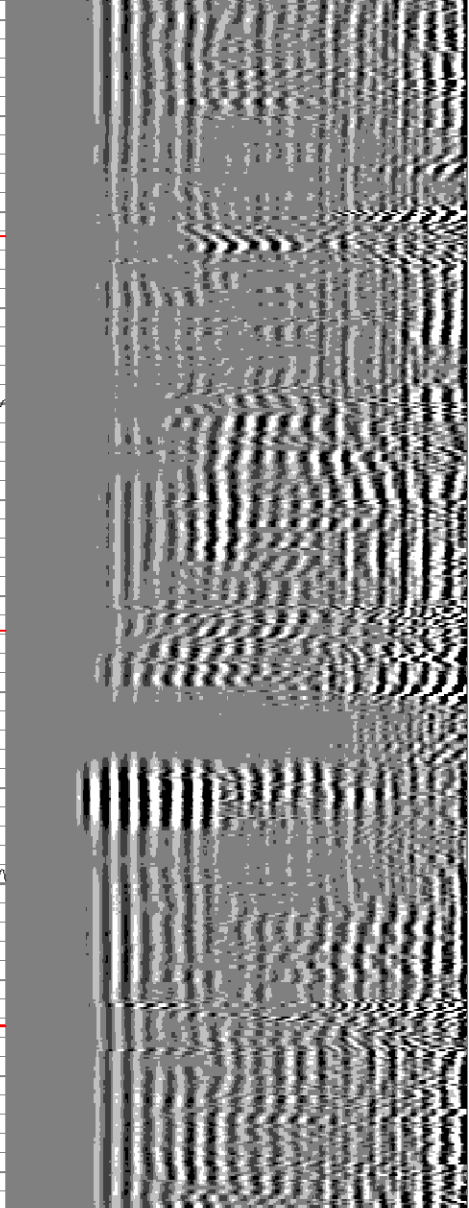
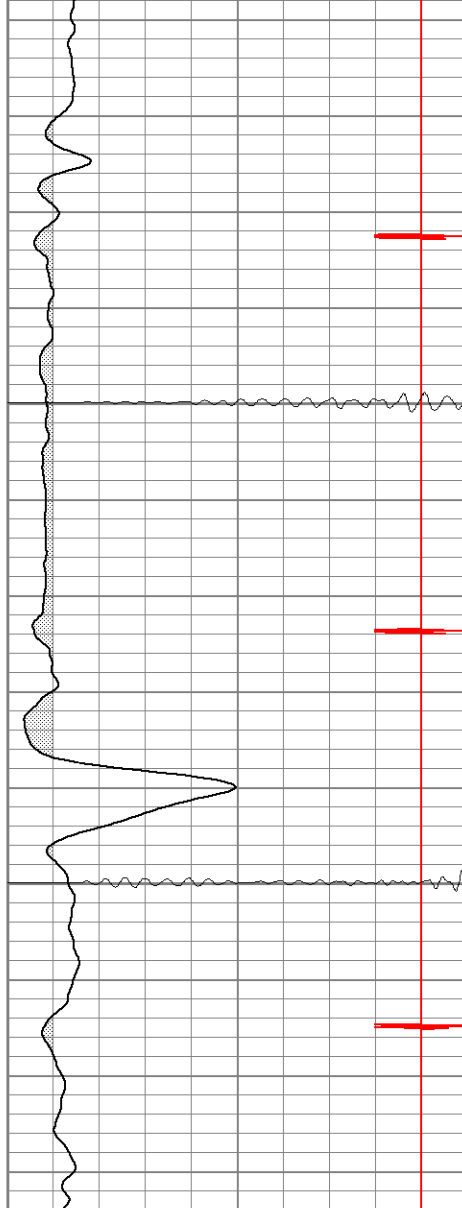


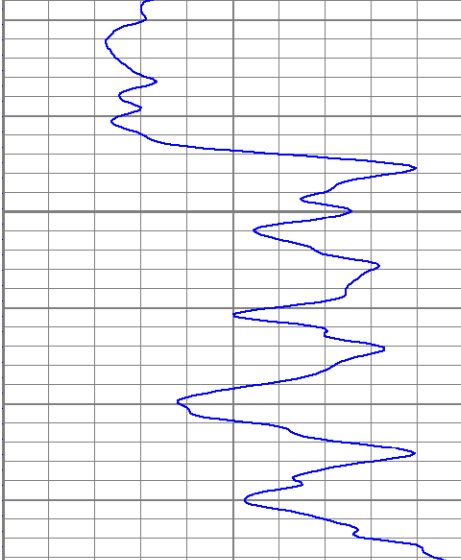




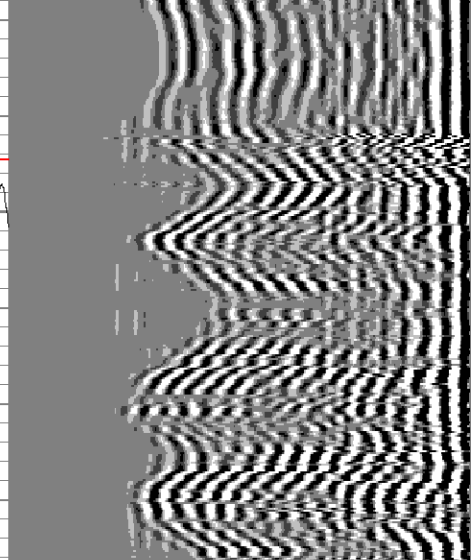
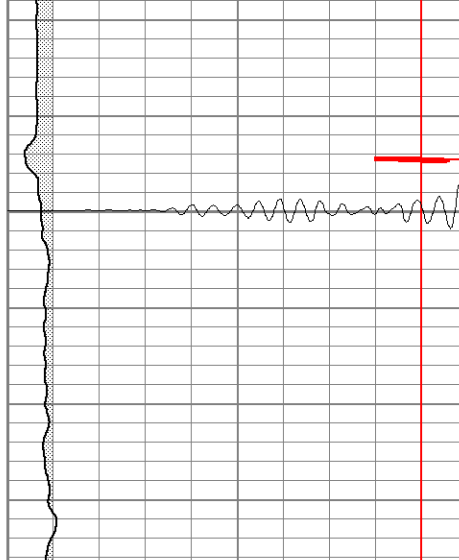
450

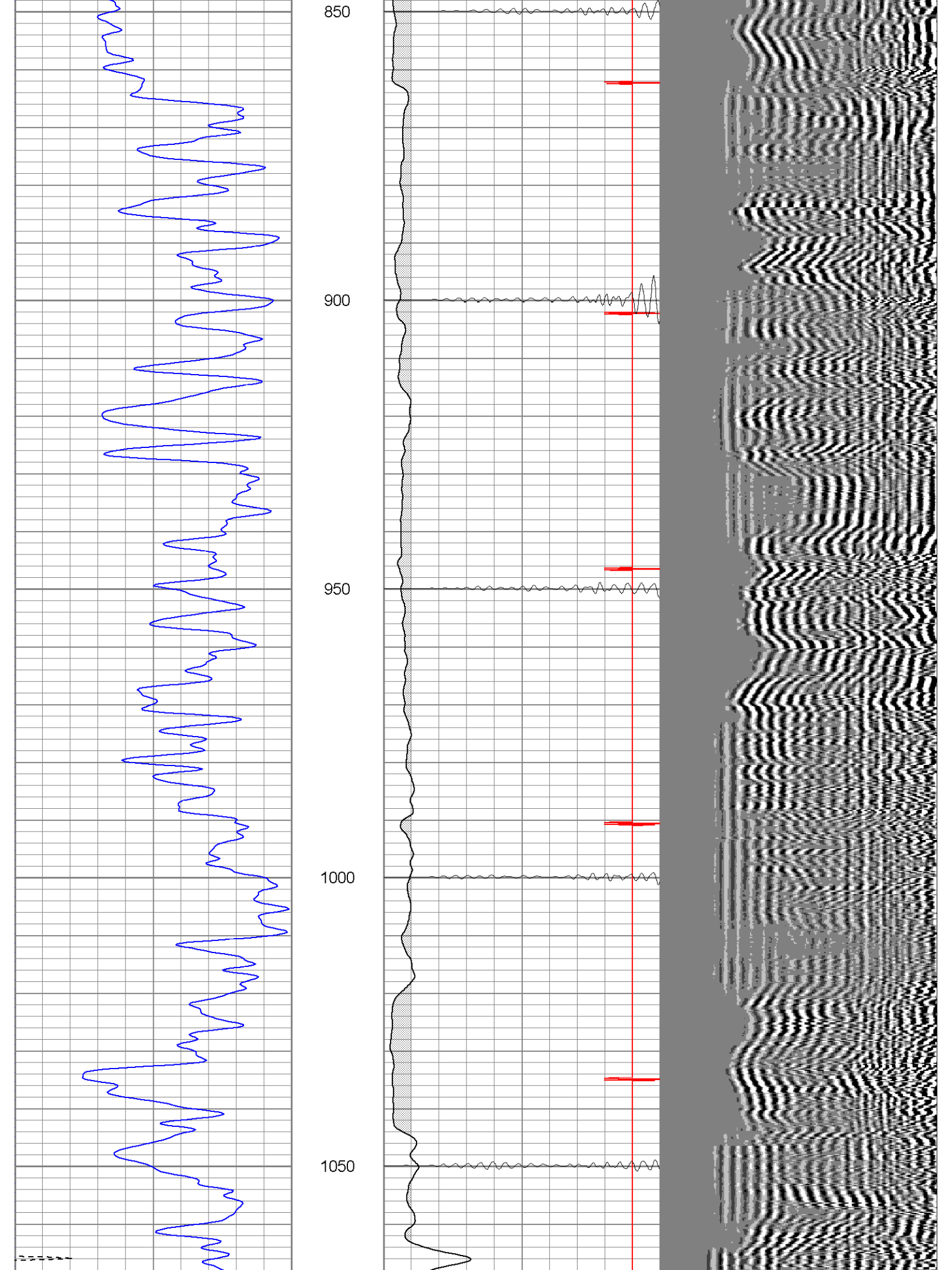
500

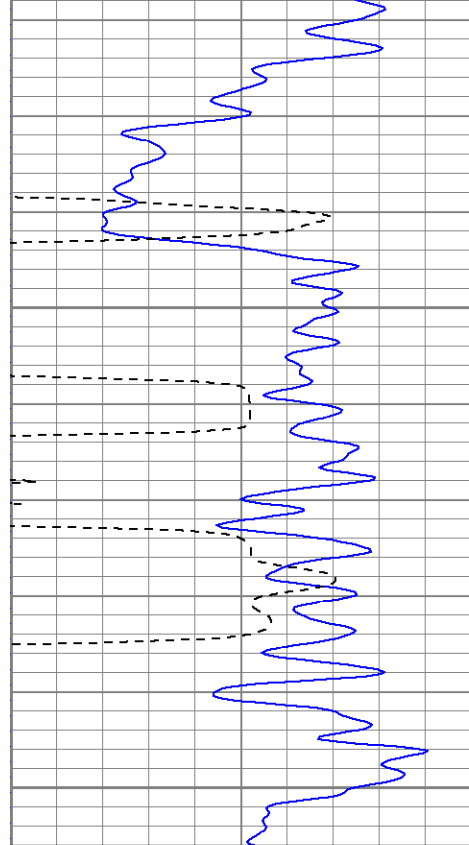




650

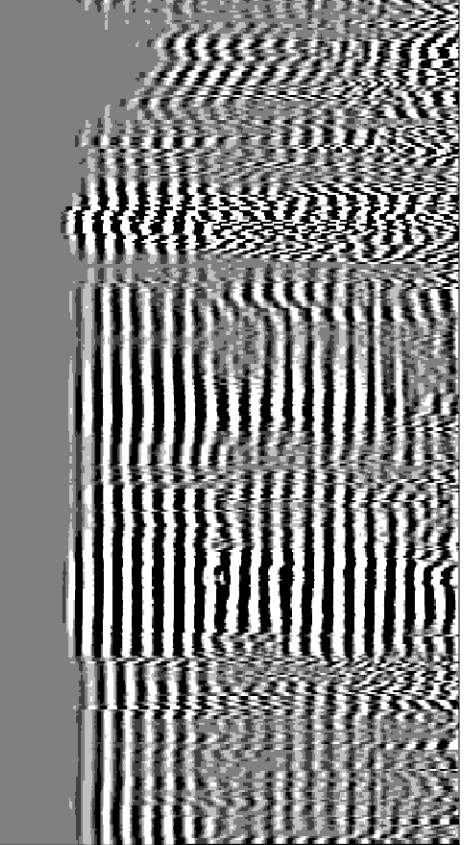
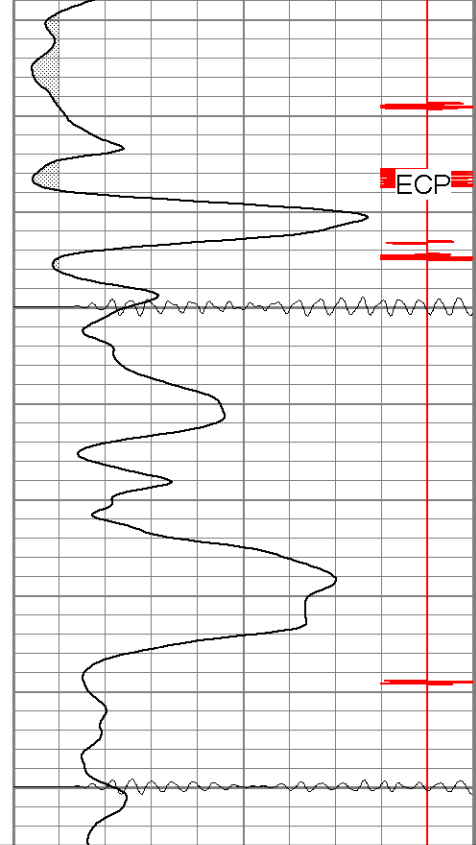


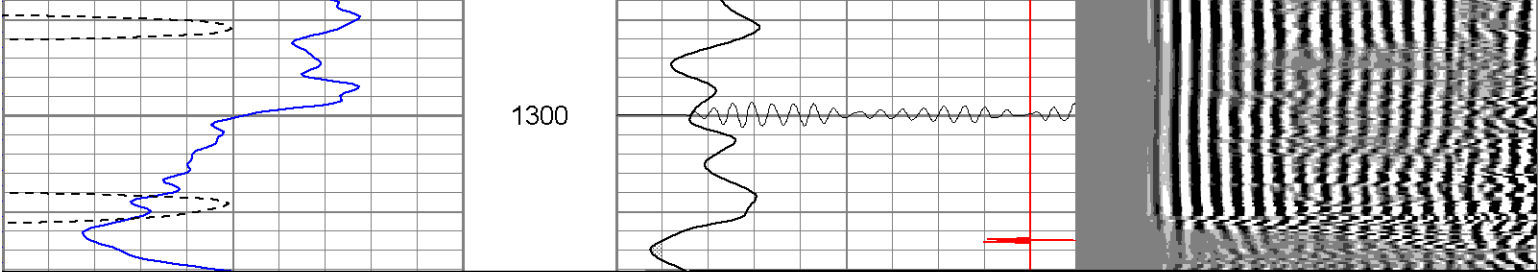


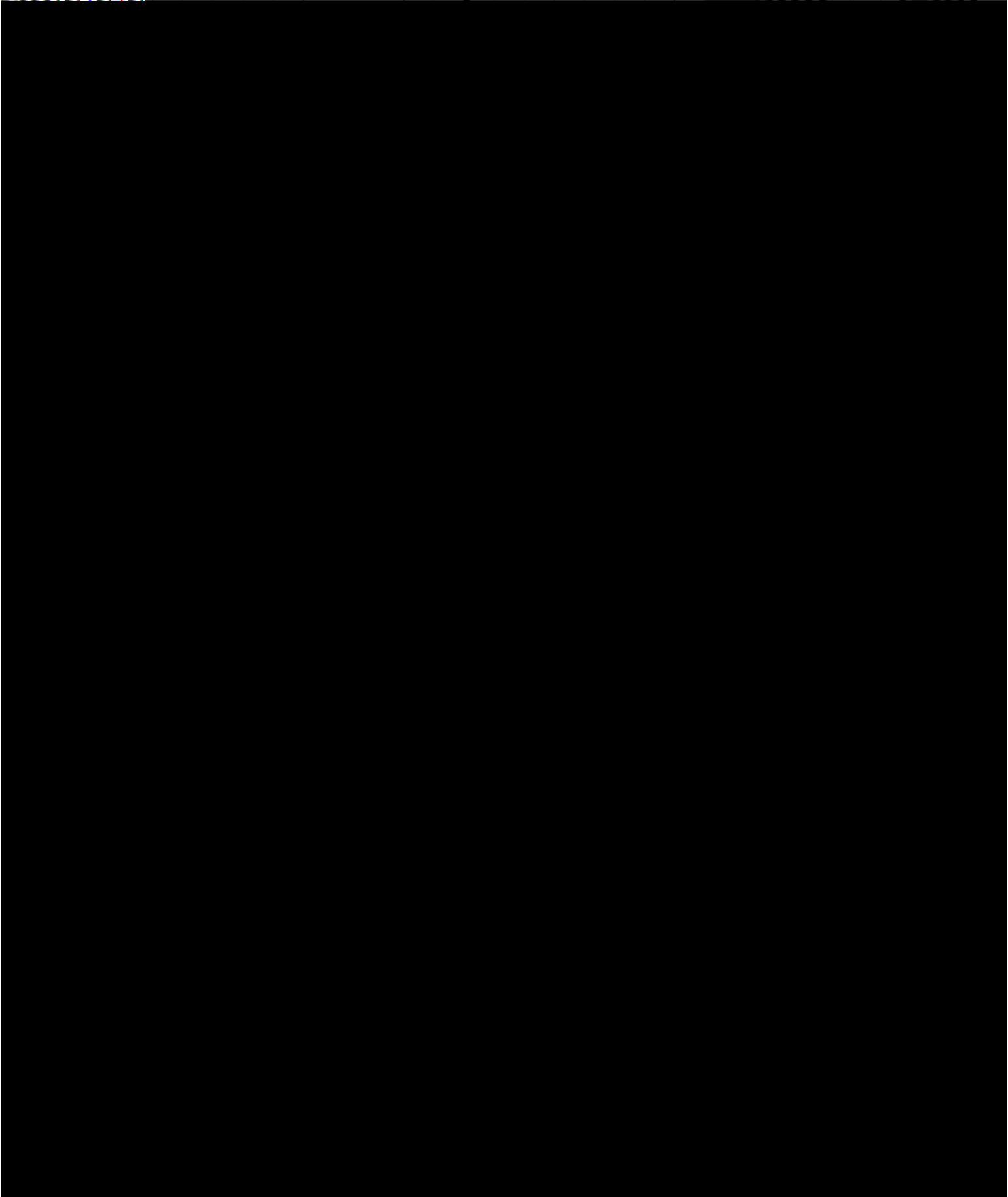
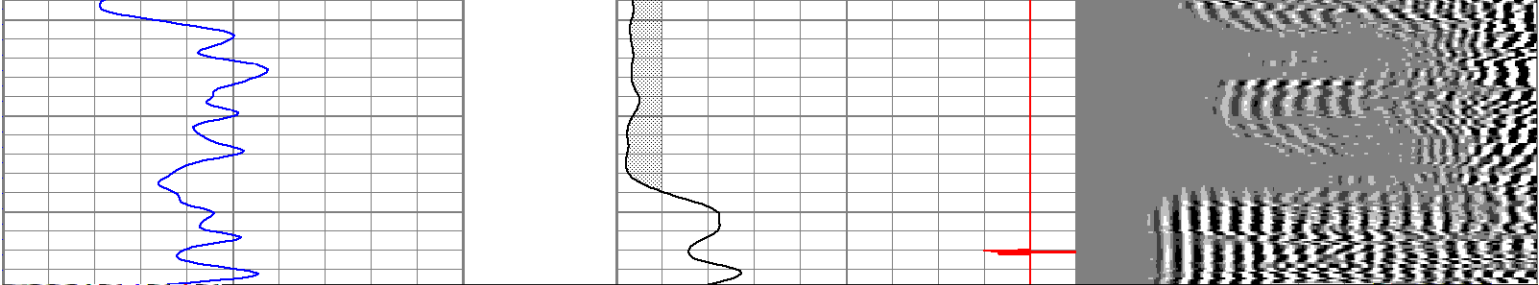


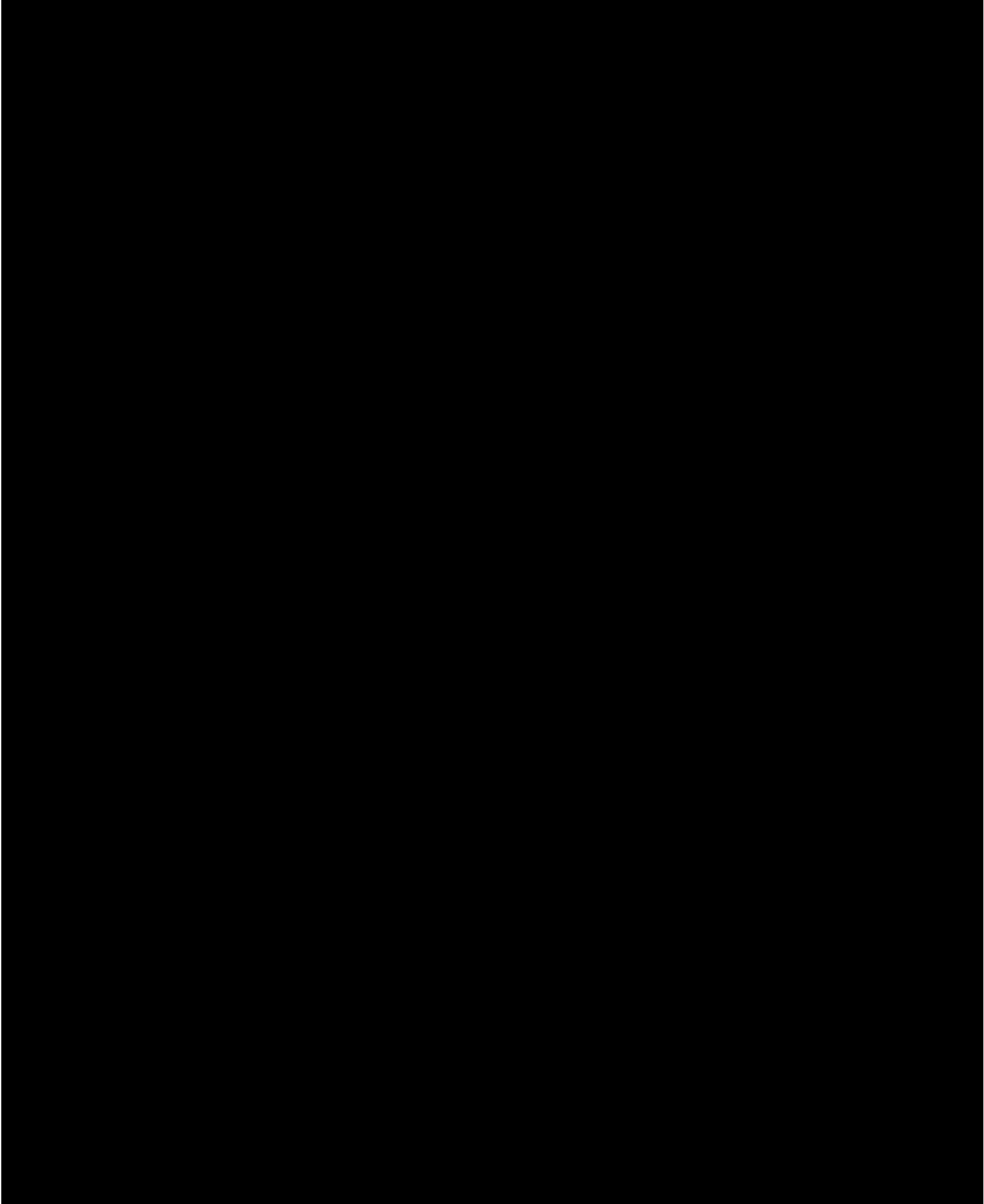
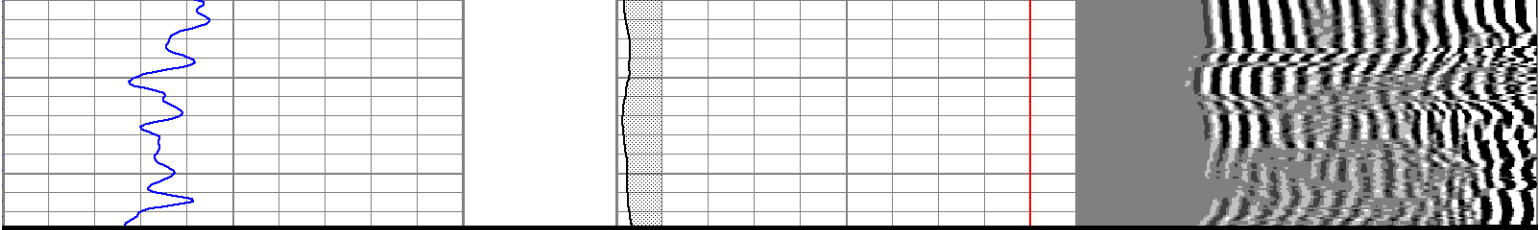
1100

1150









Calibrator Value:	200.0	CAL
Background Reading:	40.0	cps
Calibrator Reading:	240.0	cps
Sensitivity:	1.1000	GAPI/cps

Cement Bond Log Calibration Report

Serial Number:	Titan4
Tool Model:	4
Performed:	Wed Jun 21 12:37:33 2006

Depth:	1054.62	ft
Casing Diameter:	5.5	in