

Company XTO Energy
Well Golden Eagle
Field Purgatoire R
County Las Animas

Location:

899' FNL

SEC 33 TWP :

Permanent Datum Group
Log Measured From Group
Drilling Measured From Group

Company XTO Energy Inc.
Well Golden Eagle 33-01
Field Purgatoire River
County Las Animas
State Colorado

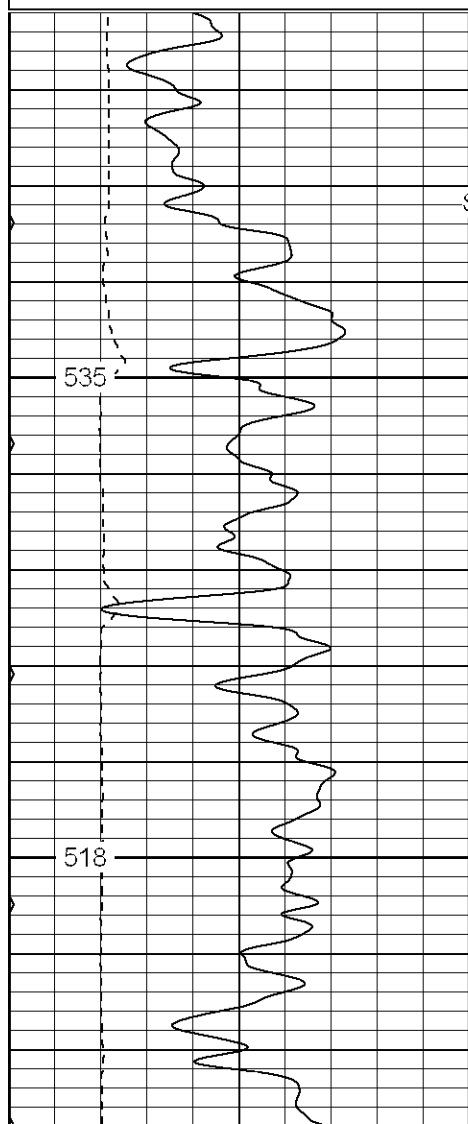
Date 07-10-06

| | |
|------------------------------|-----------------|
| Run Number | One |
| Depth Driller | 2125' |
| Depth Logger | 2126' |
| Bottom Logged Interval | 2110' |
| Top Log Interval | Surface Casing |
| Casing Driller | 8 5/8" @ 536' |
| Casing Logger | 532' |
| Bit Size | 7 7/8" |
| Type Fluid in Hole | Water |
| Density / Viscosity | /// |
| pH / Fluid Loss | /// |
| Source of Sample | /// |
| Rm @ Meas. Temp | /// |
| Rmf @ Meas. Temp | /// |
| Rmc @ Meas. Temp | /// |
| Source of Rmf / Rmc | /// |
| Rm @ BHT | /// |
| Time Circulation Stopped | 3:00 a.m. |
| Time Logger on Bottom | 6:00 a.m. |
| Maximum Recorded Temperature | 110 |
| Equipment Number | T677 |
| Location | Trinidad |
| Recorded By | L. Smith |
| Witnessed By | Mr. Don Johnson |

Database File: xtoge3301.db
 Dataset Pathname: pass2.1
 Presentation Format: cdl
 Dataset Creation: Mon Jul 10 07:31:02 2006 by Calc Warrior 7.0 STD Ope
 Charted by: Depth in Feet scaled 1:240

| | | |
|---|-----------|-----|
| 0 | GR (GAPI) | 200 |
| 6 | DCAL (in) | 16 |
| 0 | MINMK | 80 |

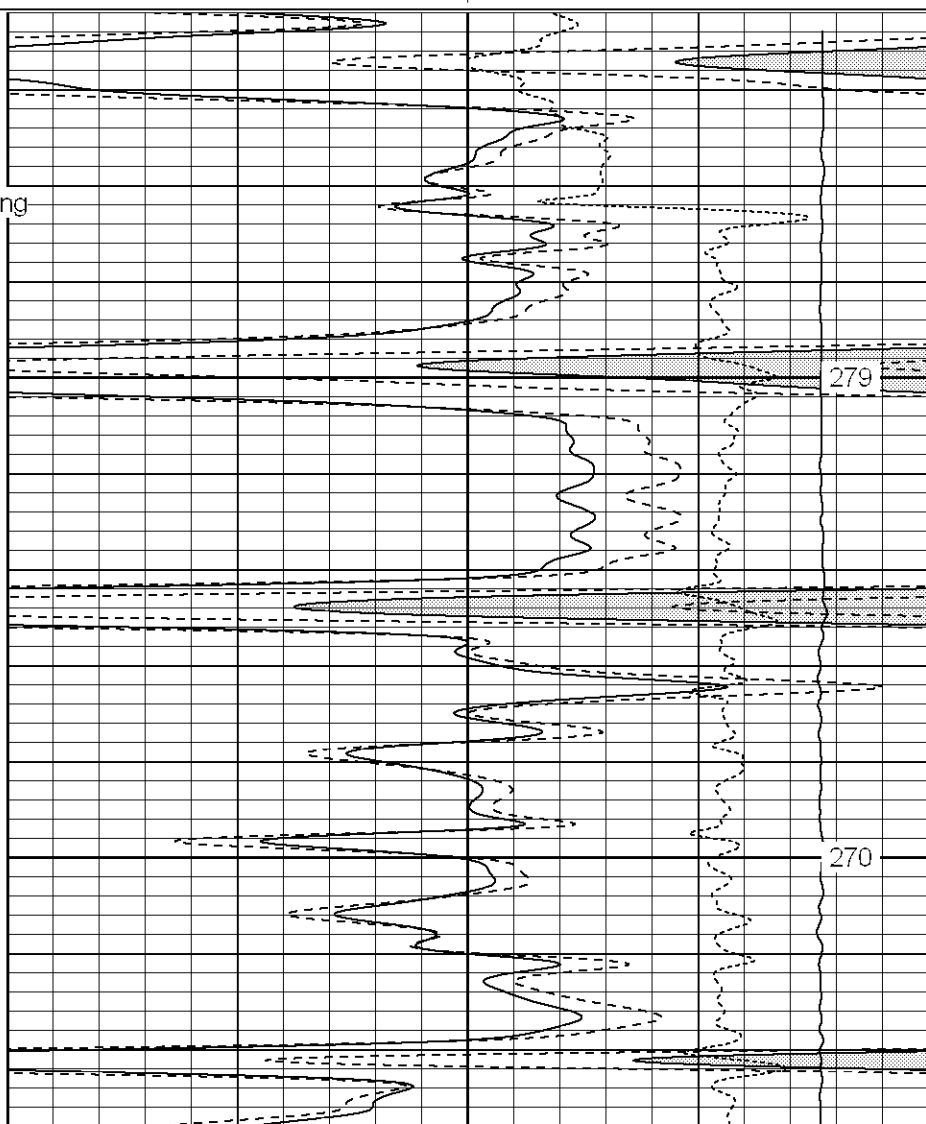
| | | |
|------|-------------|-----|
| 2 | RHOB (g/cc) | 3 |
| 1 | RHOB (g/cc) | 2 |
| 30 | DPOR (pu) | -10 |
| -0.5 | RHOC (g/cc) | 0.5 |
| 4000 | LTEN (lb) | 0 |

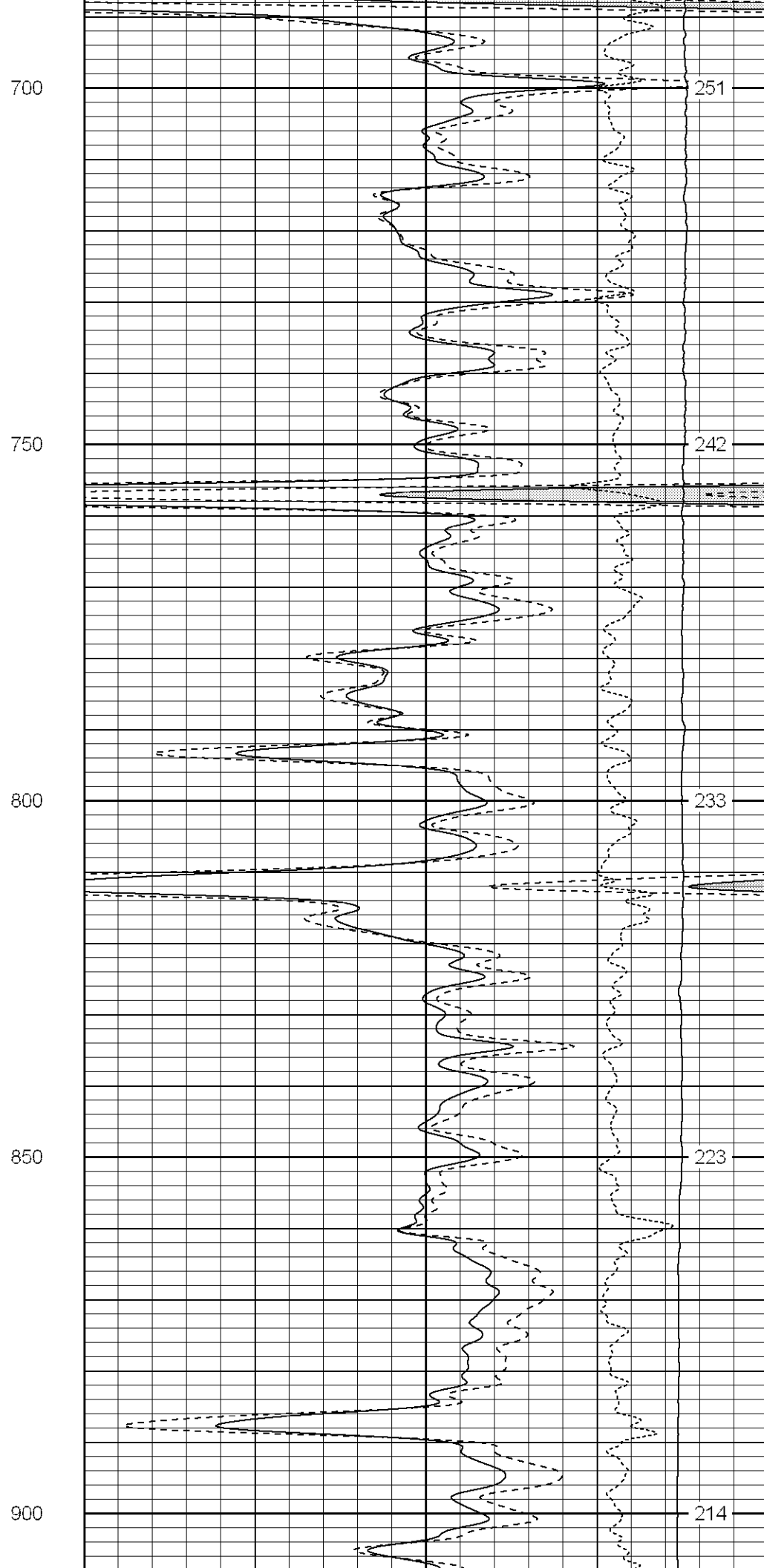
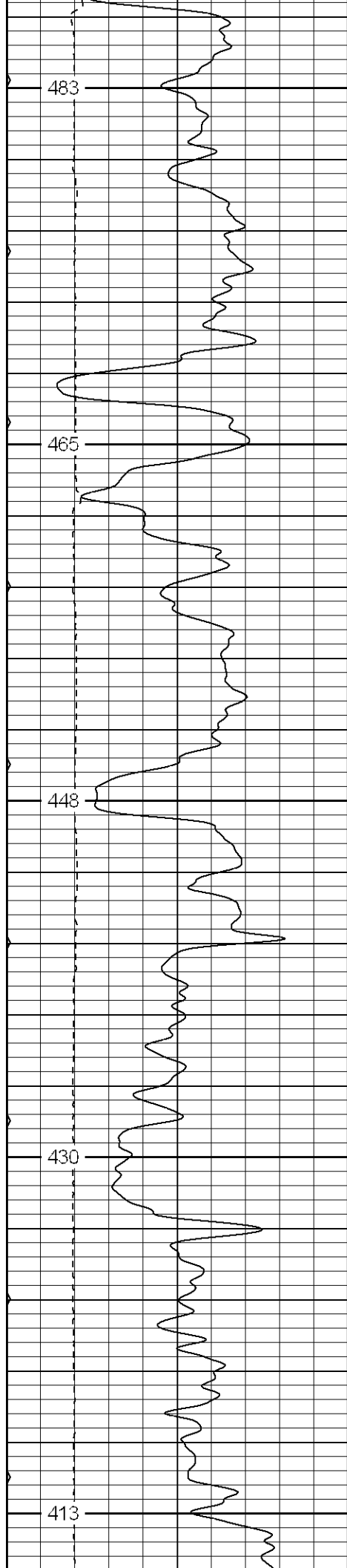


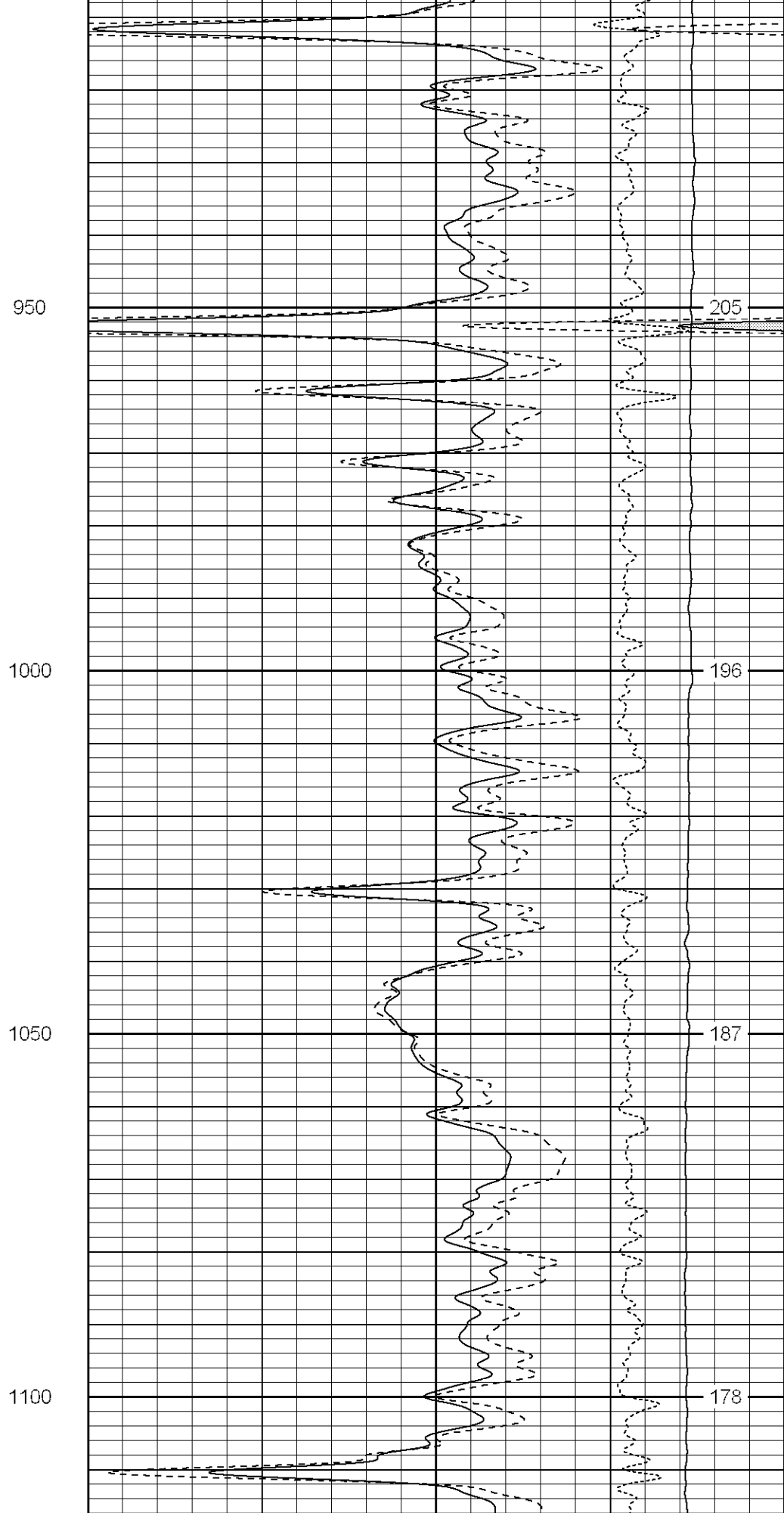
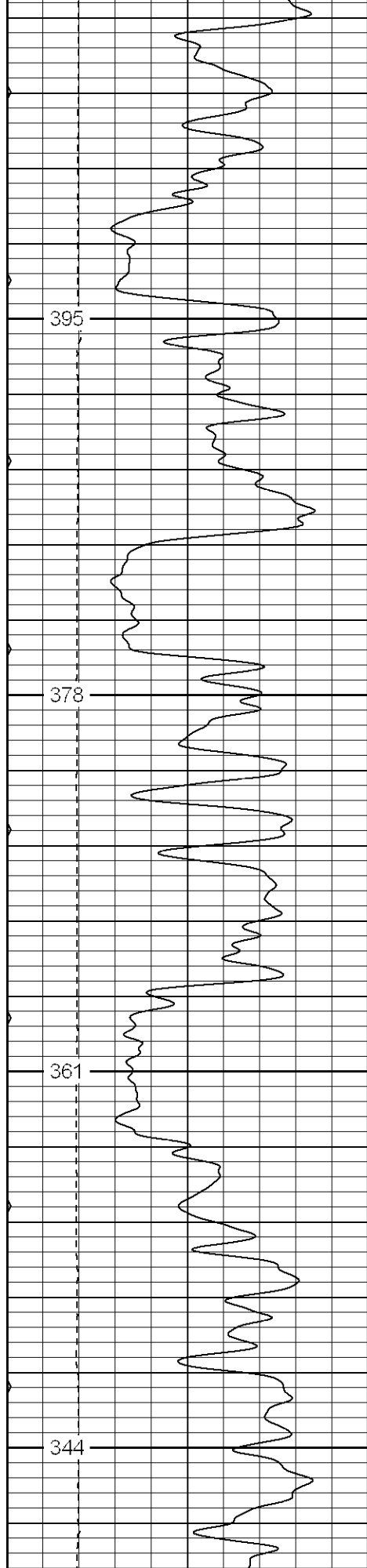
Surface Casing

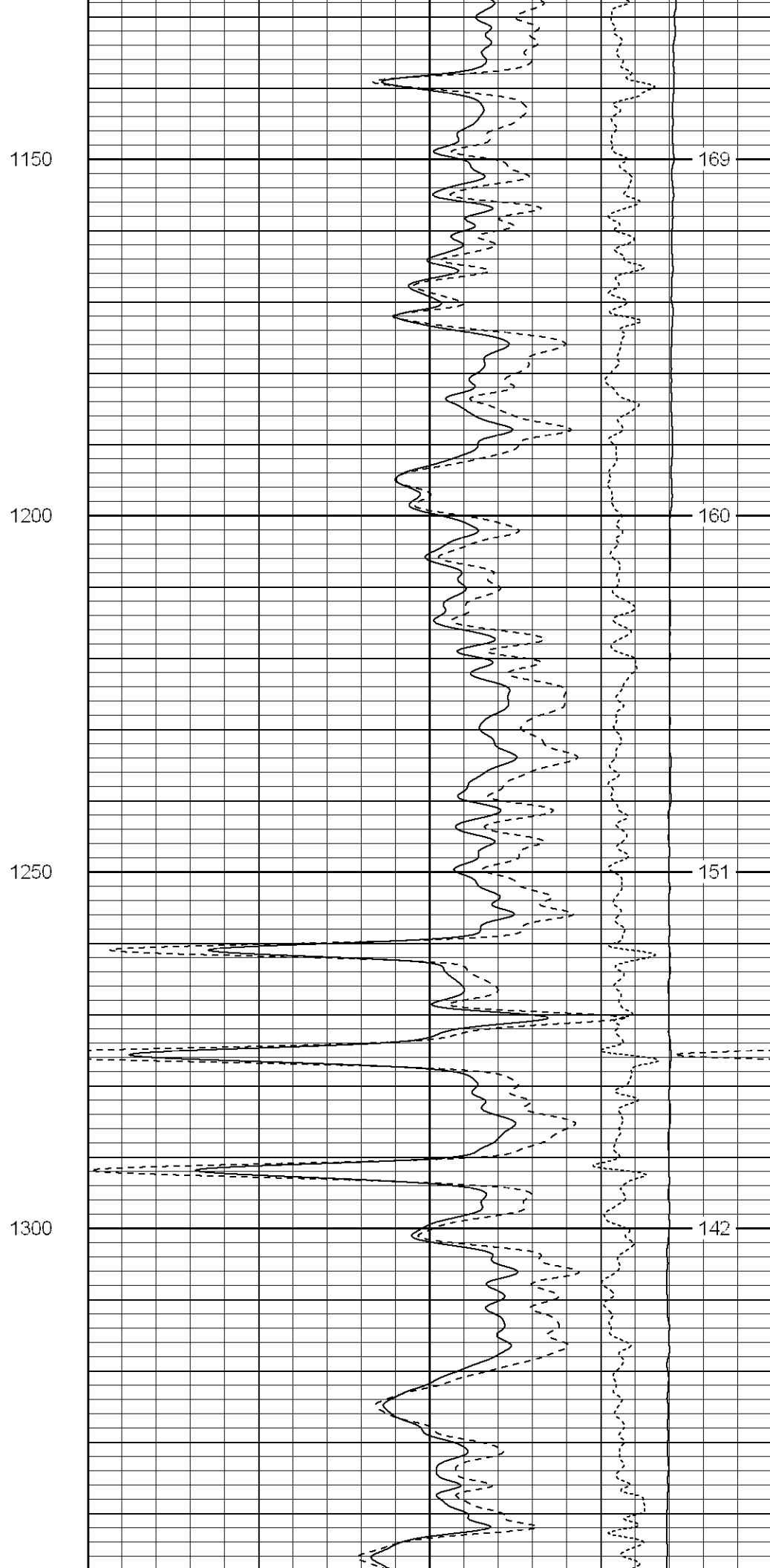
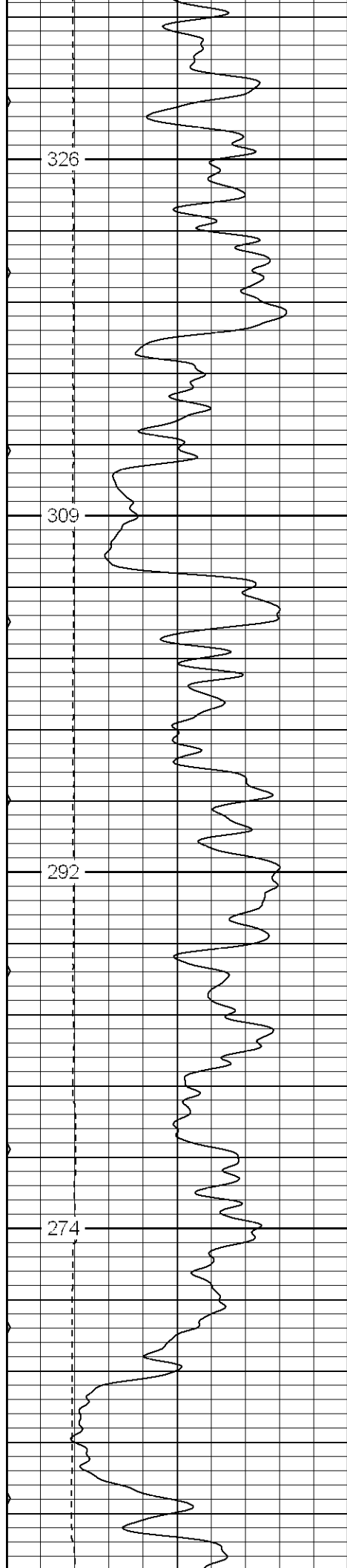
550

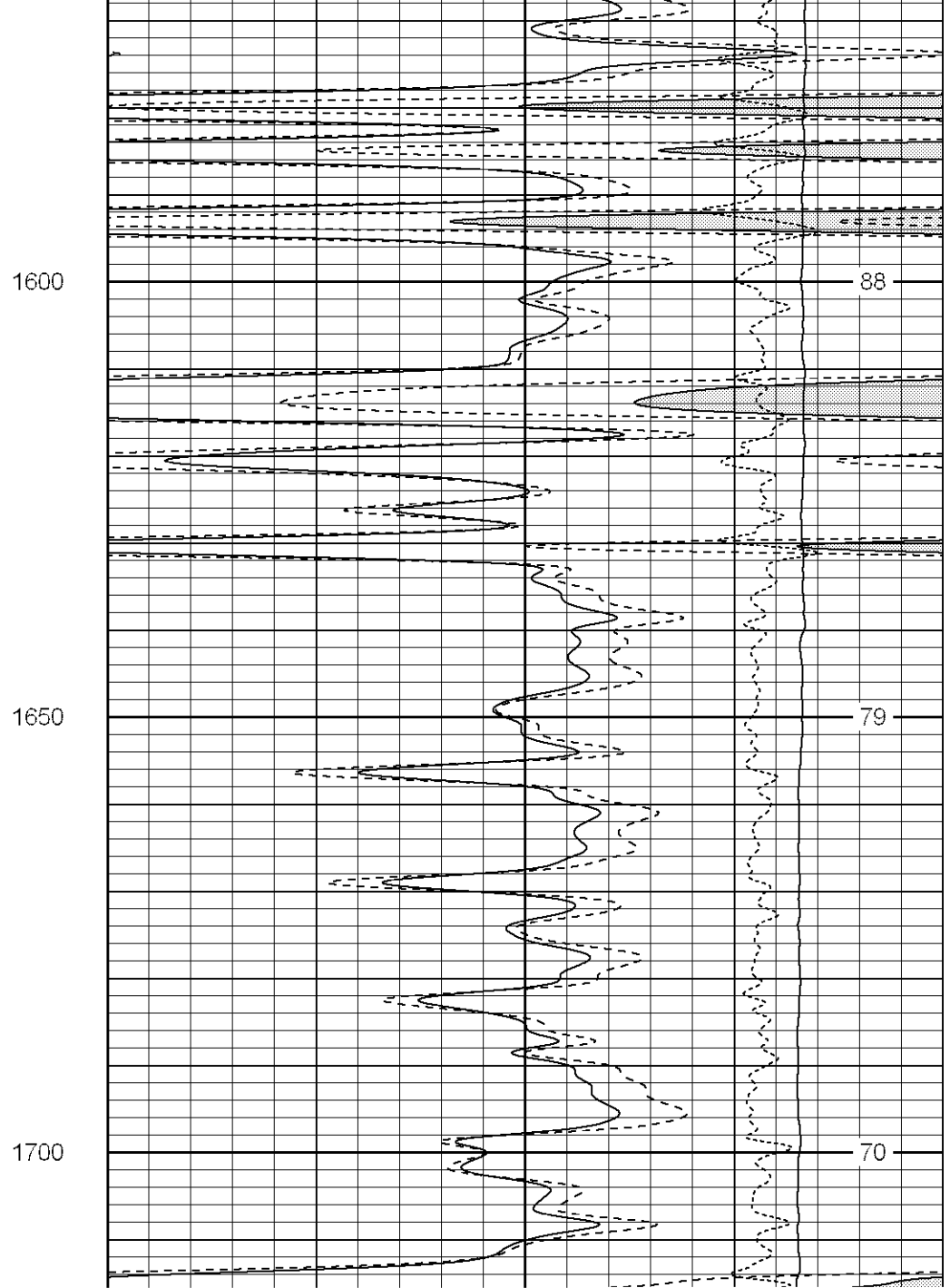
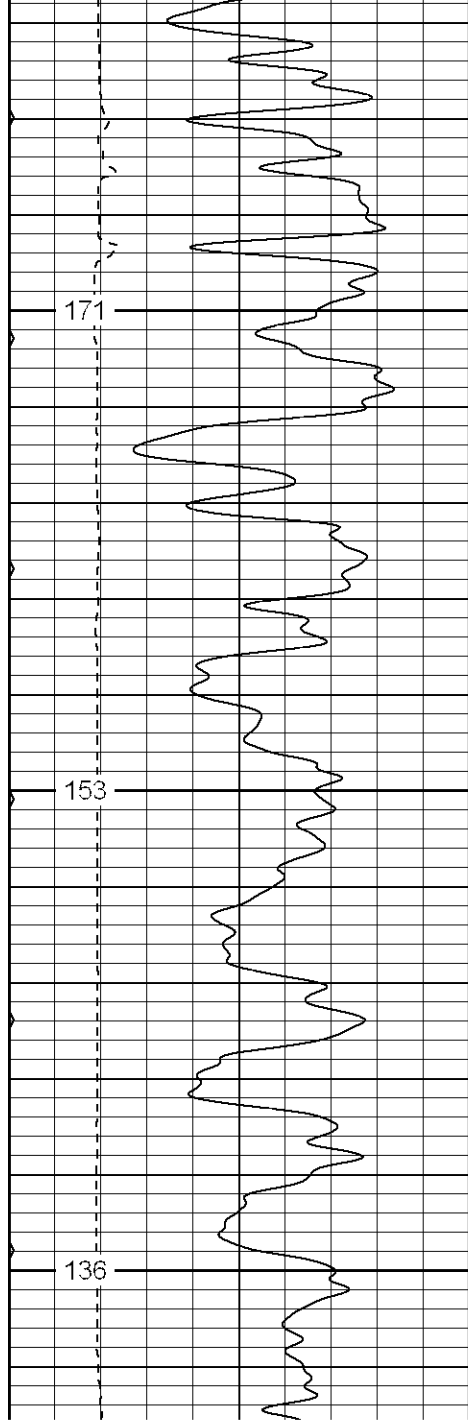
600

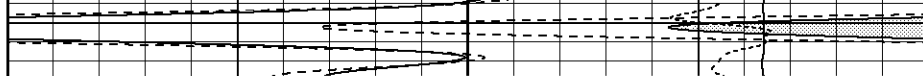
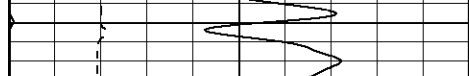


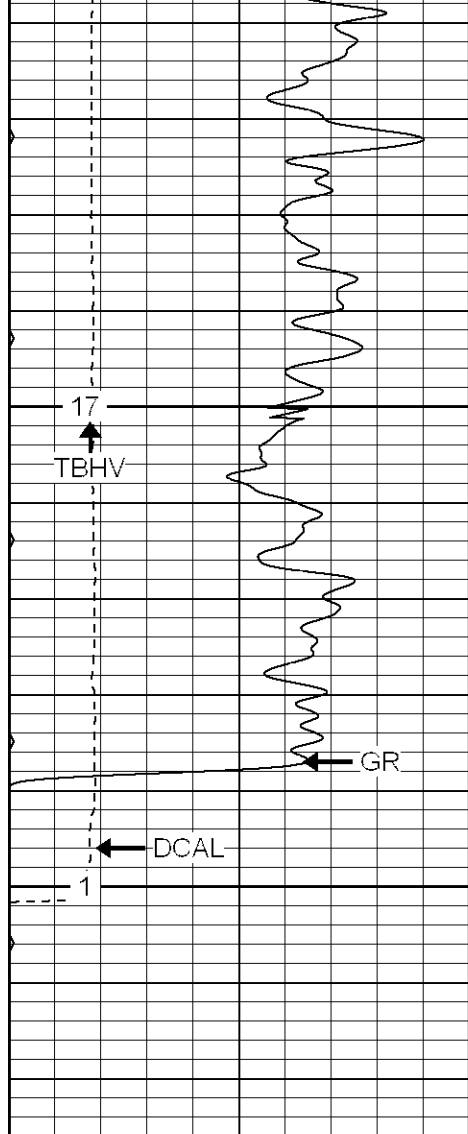








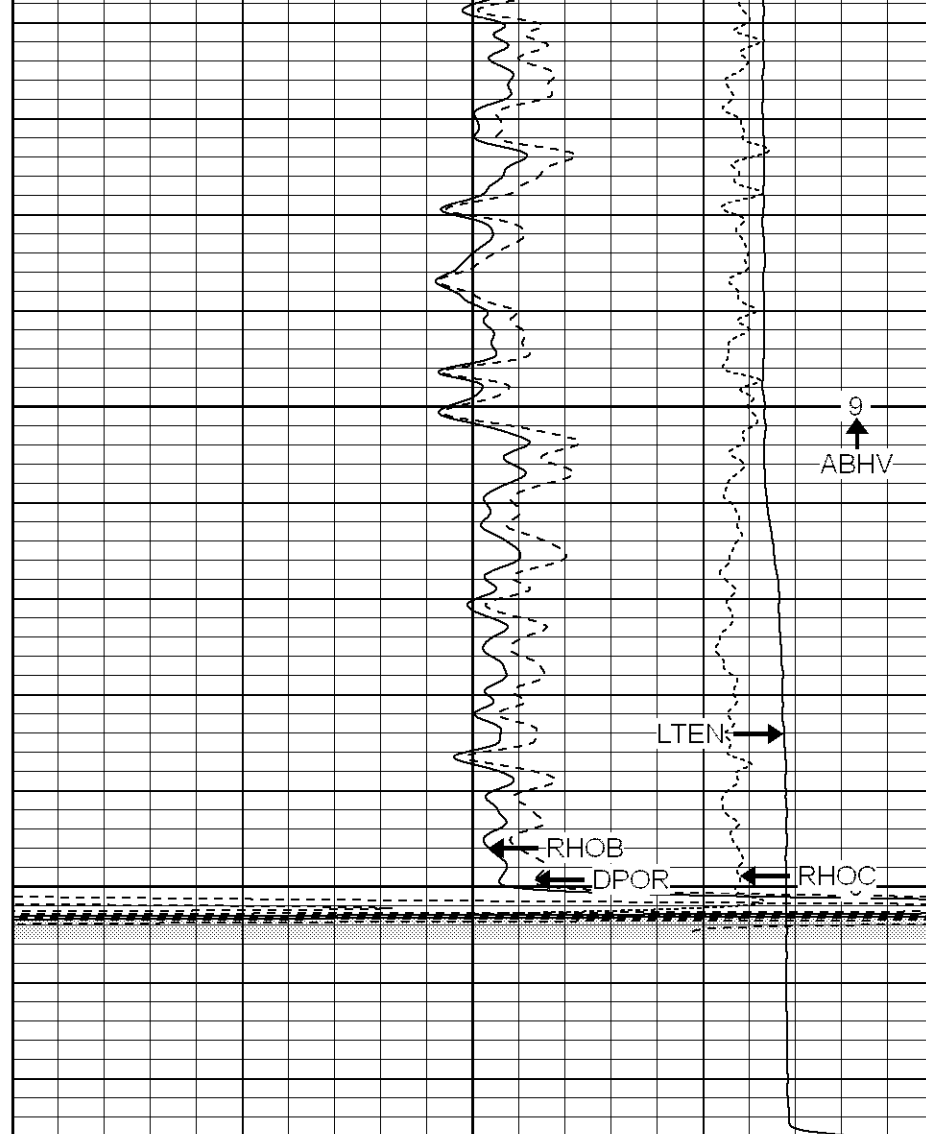




| | | |
|---|-----------|-----|
| 0 | GR (GAPI) | 200 |
| 6 | DCAL (in) | 16 |
| 0 | MINMK | 80 |

2050

2100



| | | |
|------|-------------|-----|
| 2 | RHOB (g/cc) | 3 |
| 1 | RHOB (g/cc) | 2 |
| 30 | DPOR (pu) | -10 |
| -0.5 | RHOC (g/cc) | 0.5 |
| 4000 | LTEN (lb) | 0 |

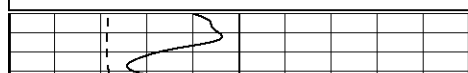
Patterson

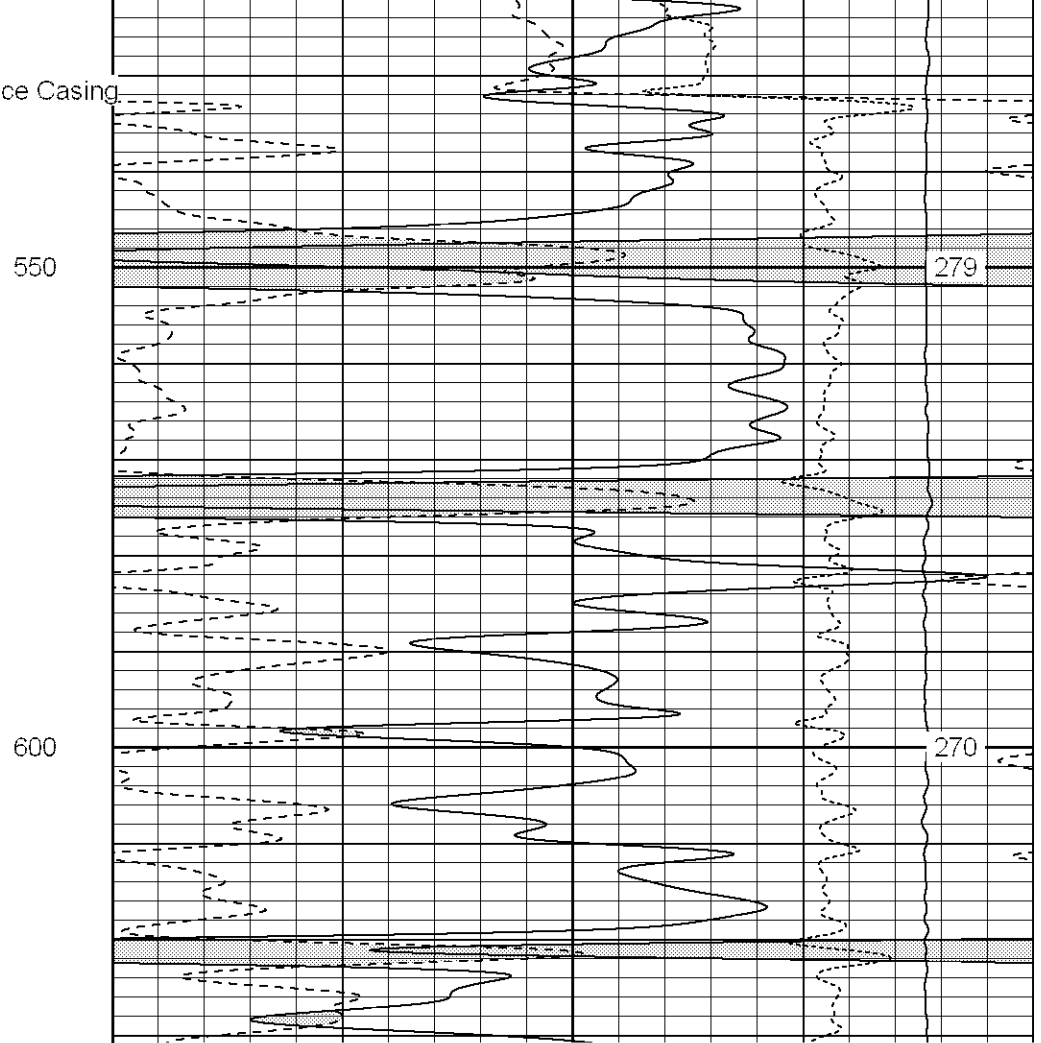
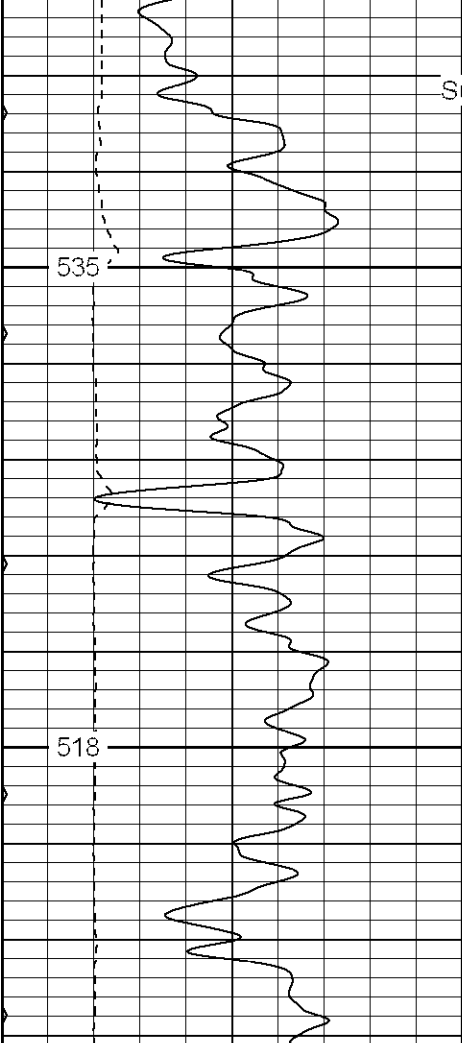
Main Pass

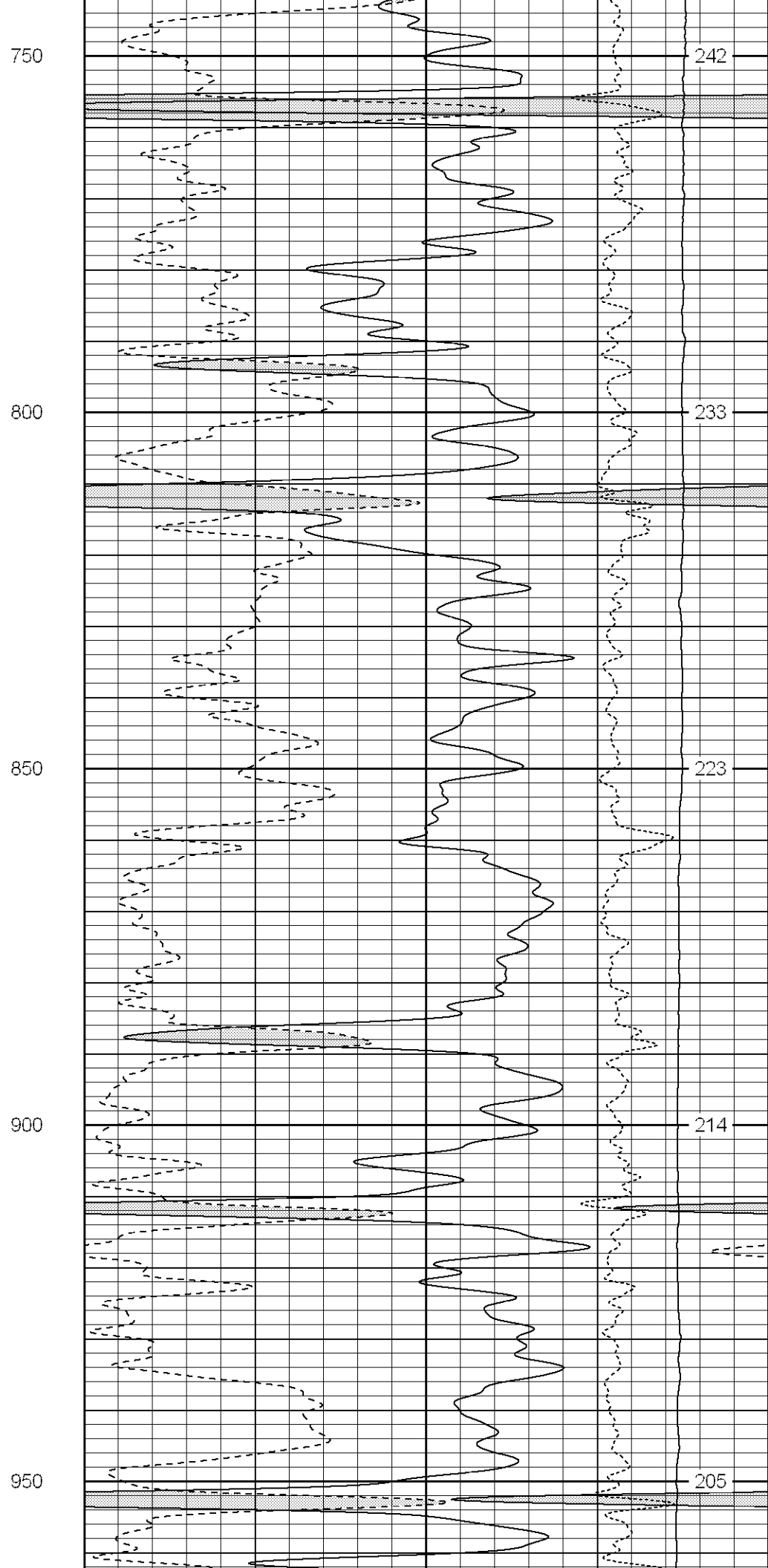
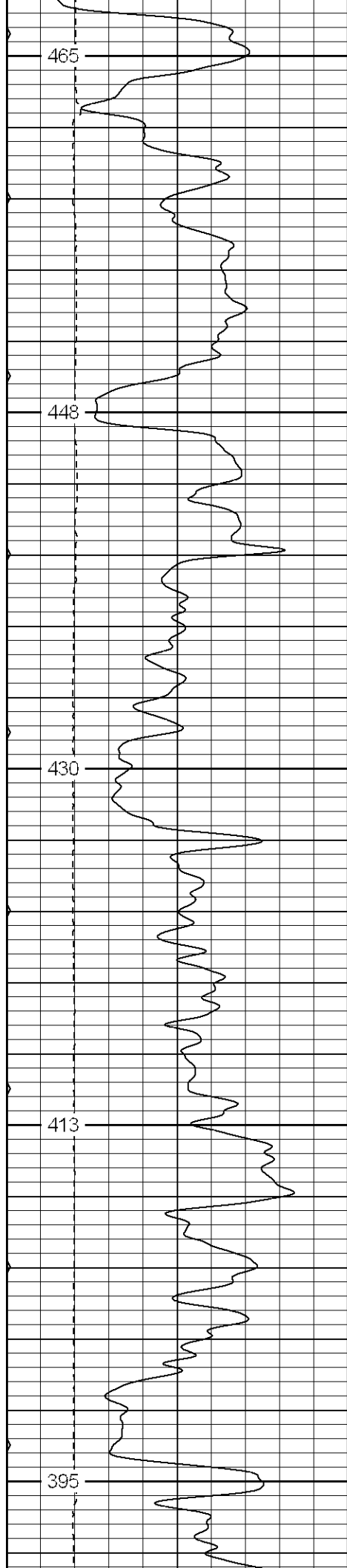
Database File: xtoge3301.db
 Dataset Pathname: pass2.1
 Presentation Format: odnl
 Dataset Creation: Mon Jul 10 07:31:02 2006 by Calc Warrior 7.0 STD Ope
 Charted by: Depth in Feet scaled 1:240

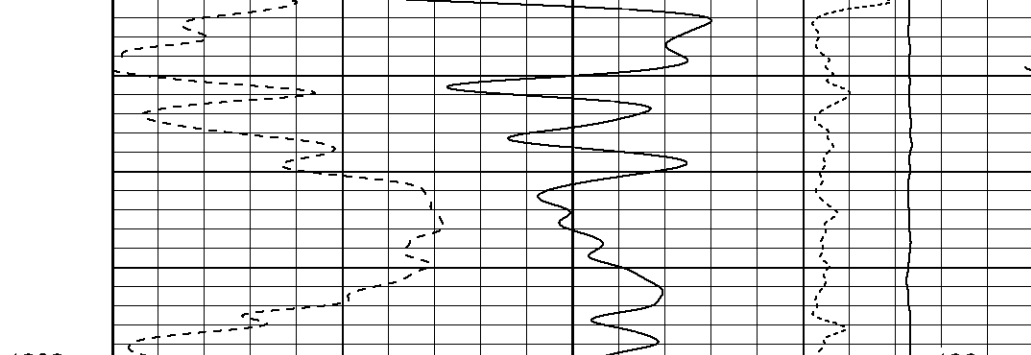
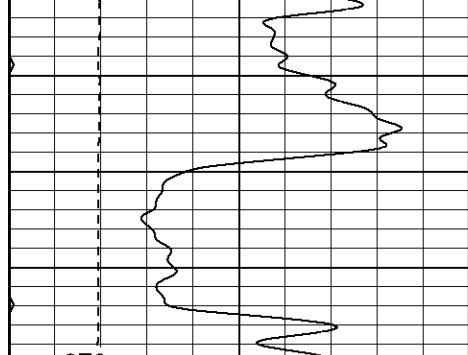
| | | |
|---|-----------|-----|
| 0 | GR (GAPI) | 200 |
| 6 | DCAL (in) | 16 |
| 0 | MINMK | 80 |

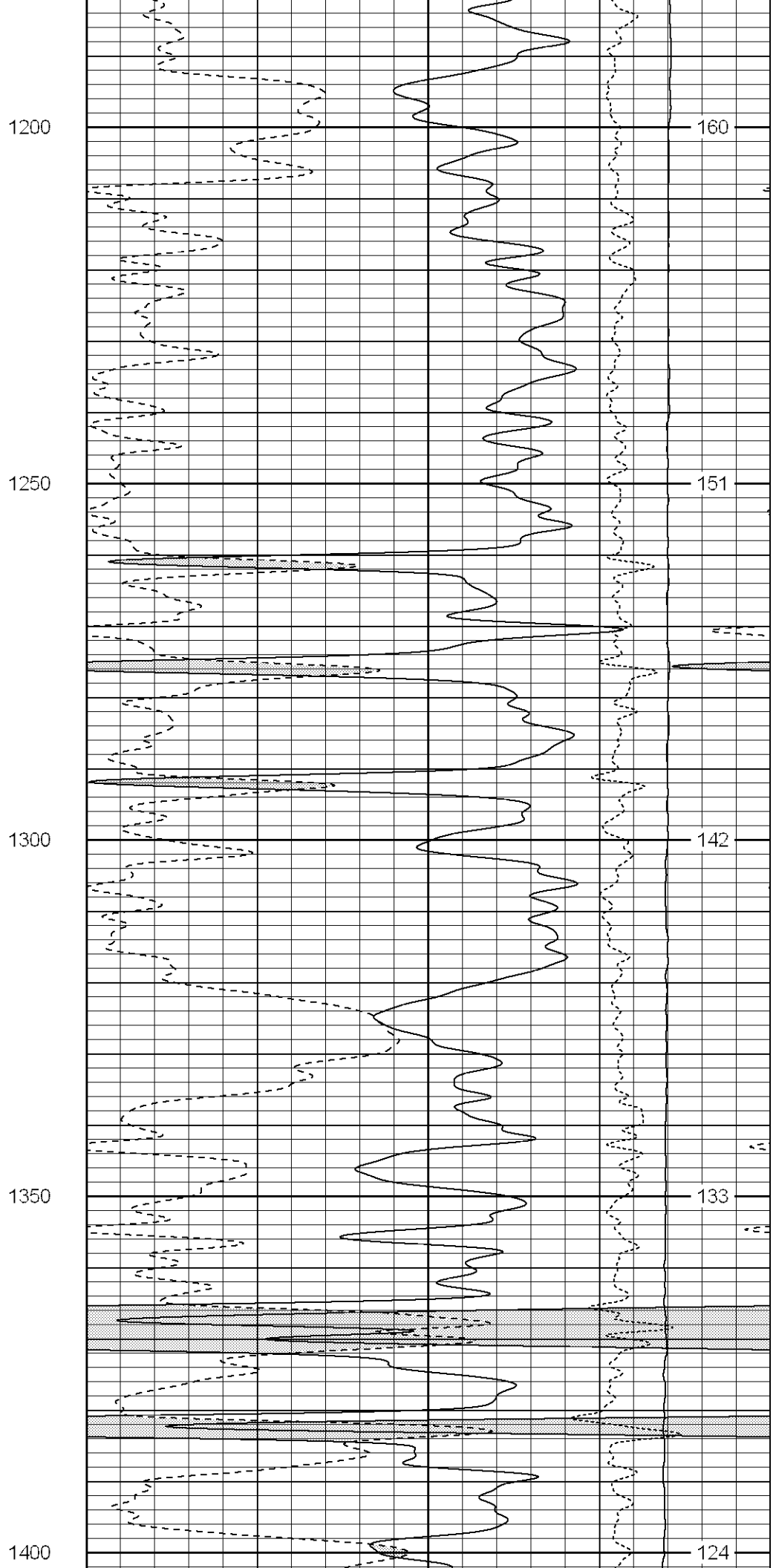
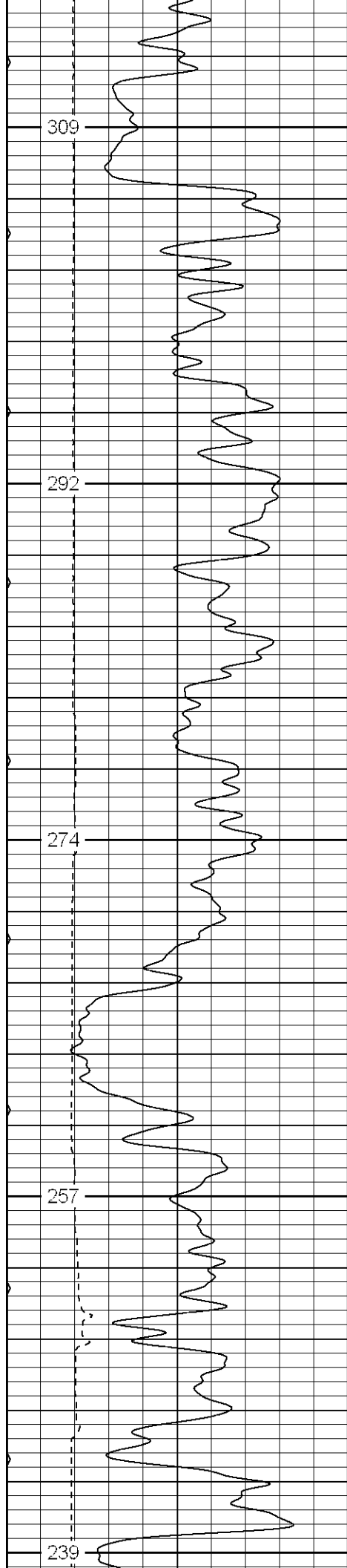
| | | |
|------|-------------|-----|
| 30 | NPOR (pu) | -10 |
| 30 | DPOR (pu) | -10 |
| -0.5 | RHOC (g/cc) | 0.5 |
| 4000 | LTEN (lb) | 0 |

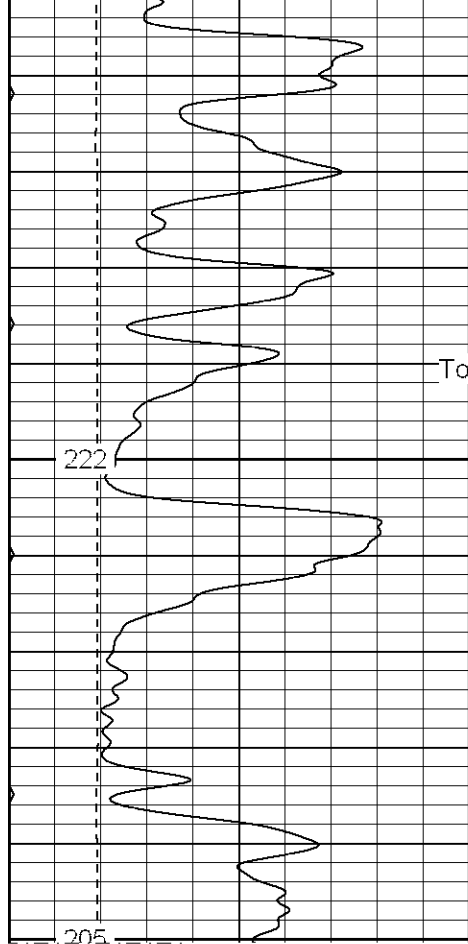








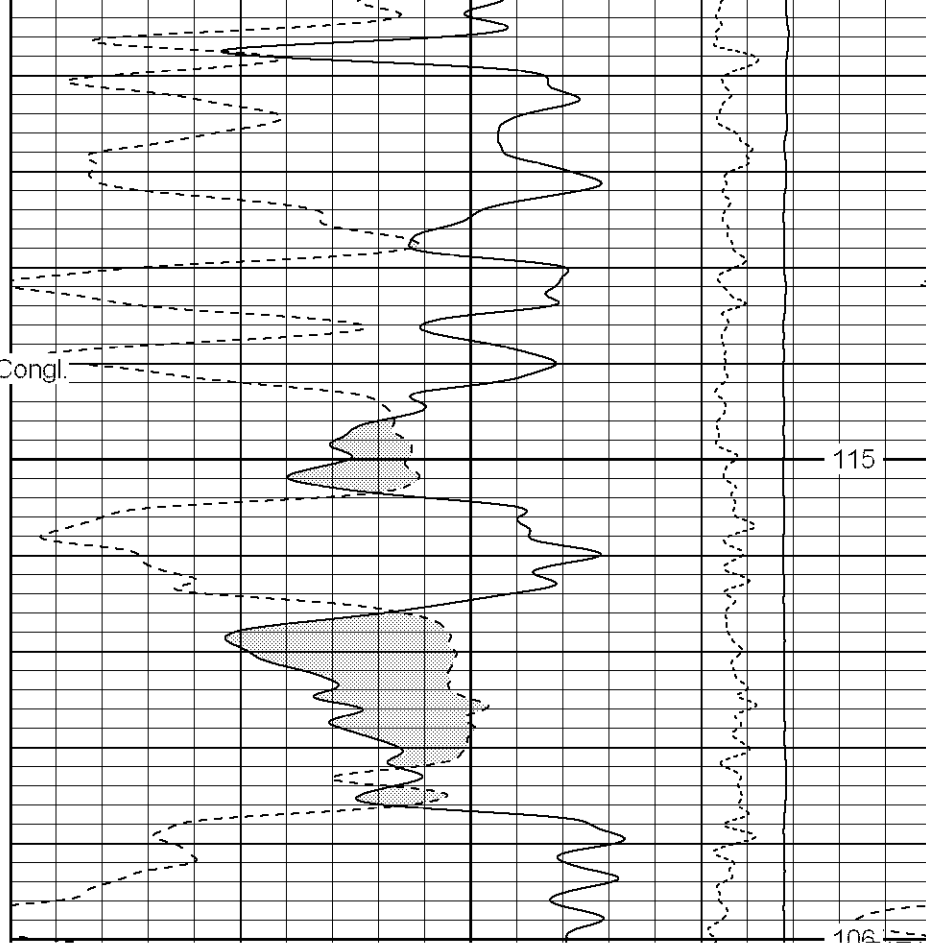


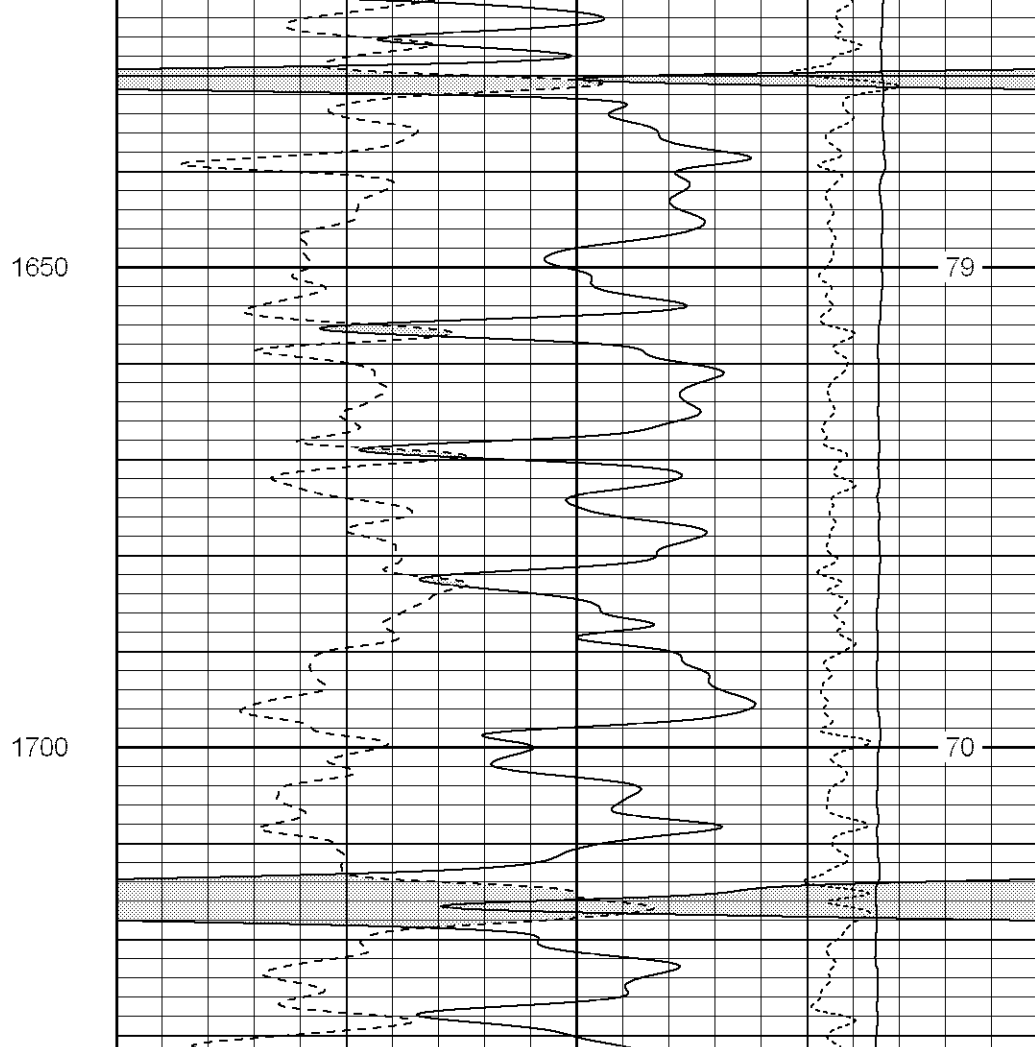
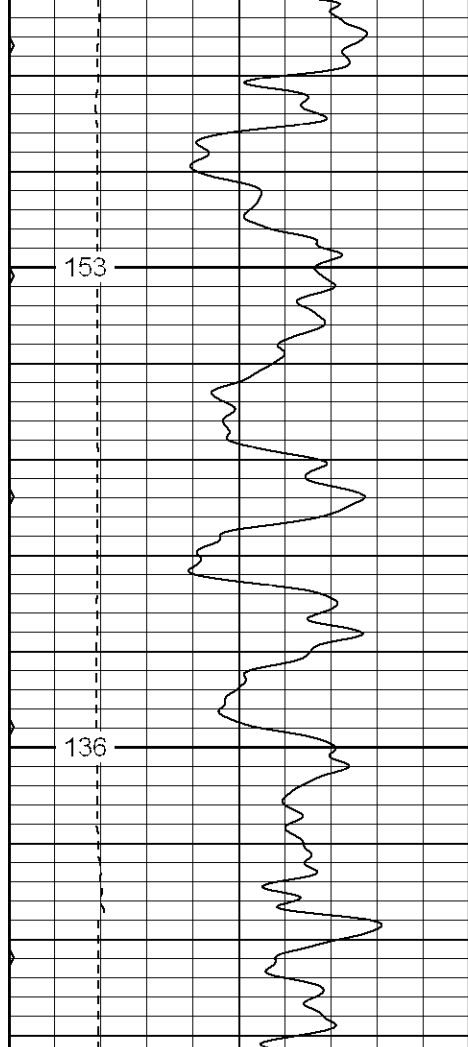


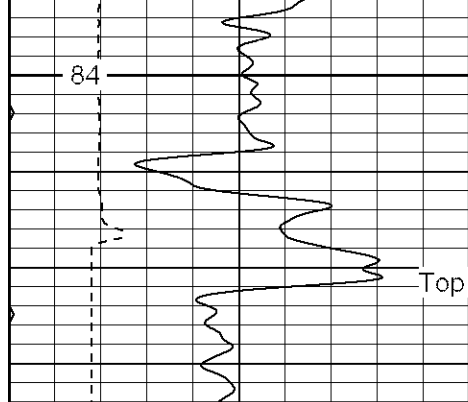
Top Of Raton Congl.

1450

1500

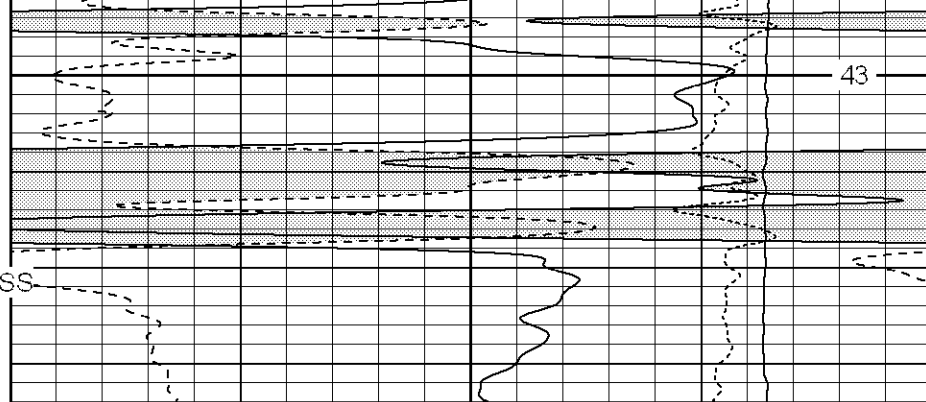


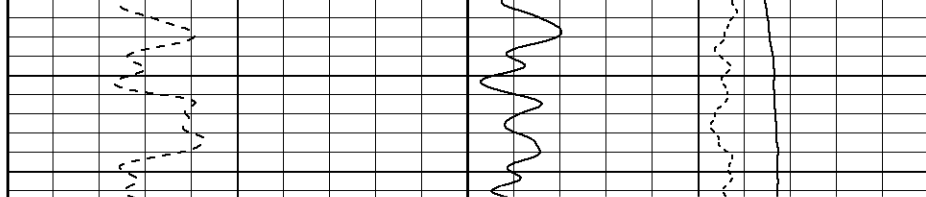
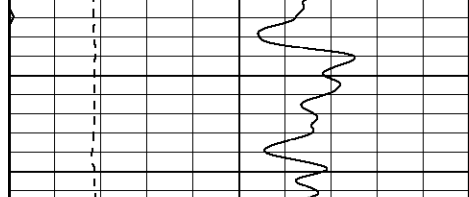


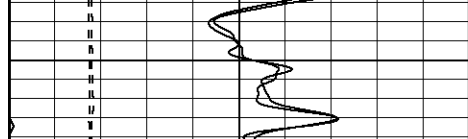


1850

Top Of Trinidad SS



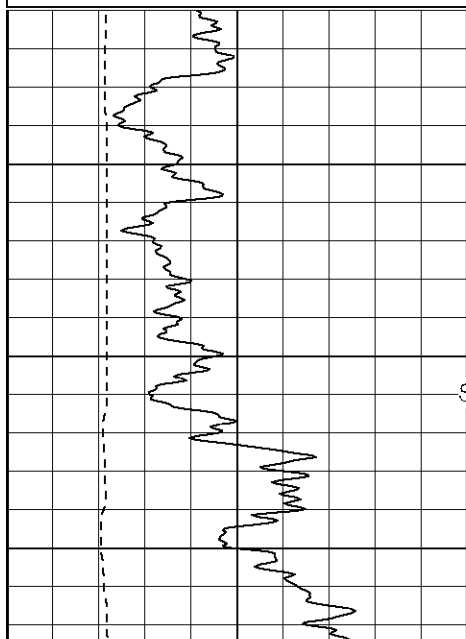




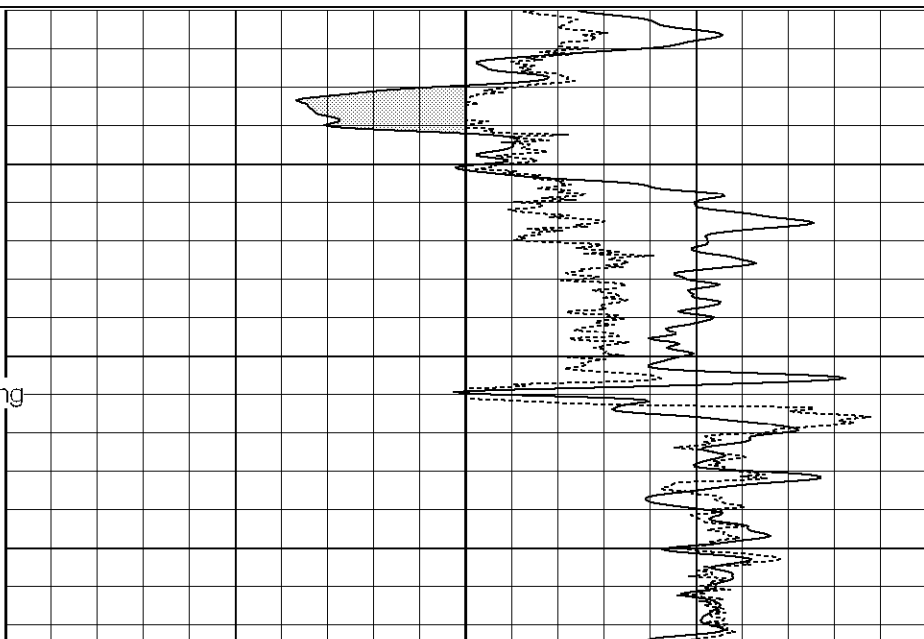
Database File: xtoge3301.db
Dataset Pathname: pass2.2
Presentation Format: cdlhr
Dataset Creation: Mon Jul 10 10:13:20 2006 by Calc Warrior 7.0 STD Ope
Charted by: Depth in Feet scaled 1:120

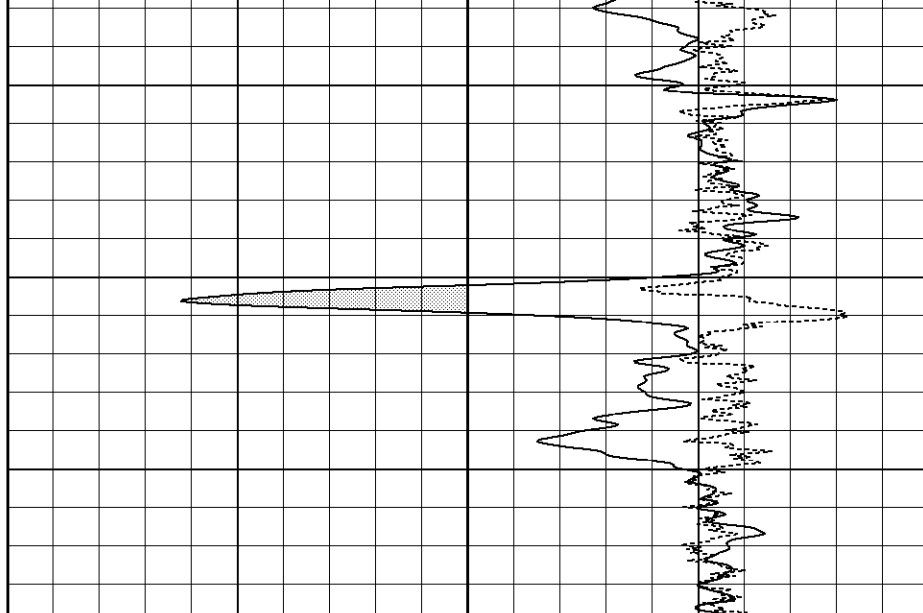
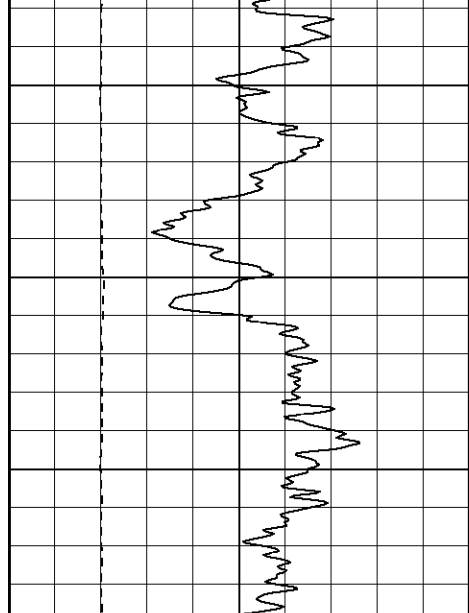
| | | |
|---|-----------|-----|
| 0 | GR (GAPI) | 200 |
| 6 | DCAL (in) | 16 |

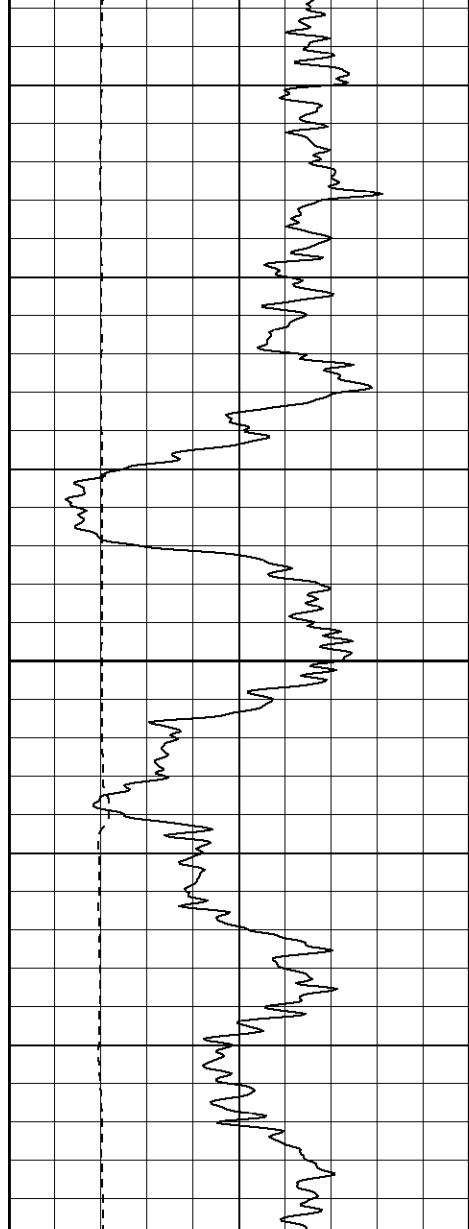
| | | |
|------|-------------|-----|
| 1 | RHOB (g/cc) | 3 |
| -0.5 | RHOC (g/cc) | 0.5 |



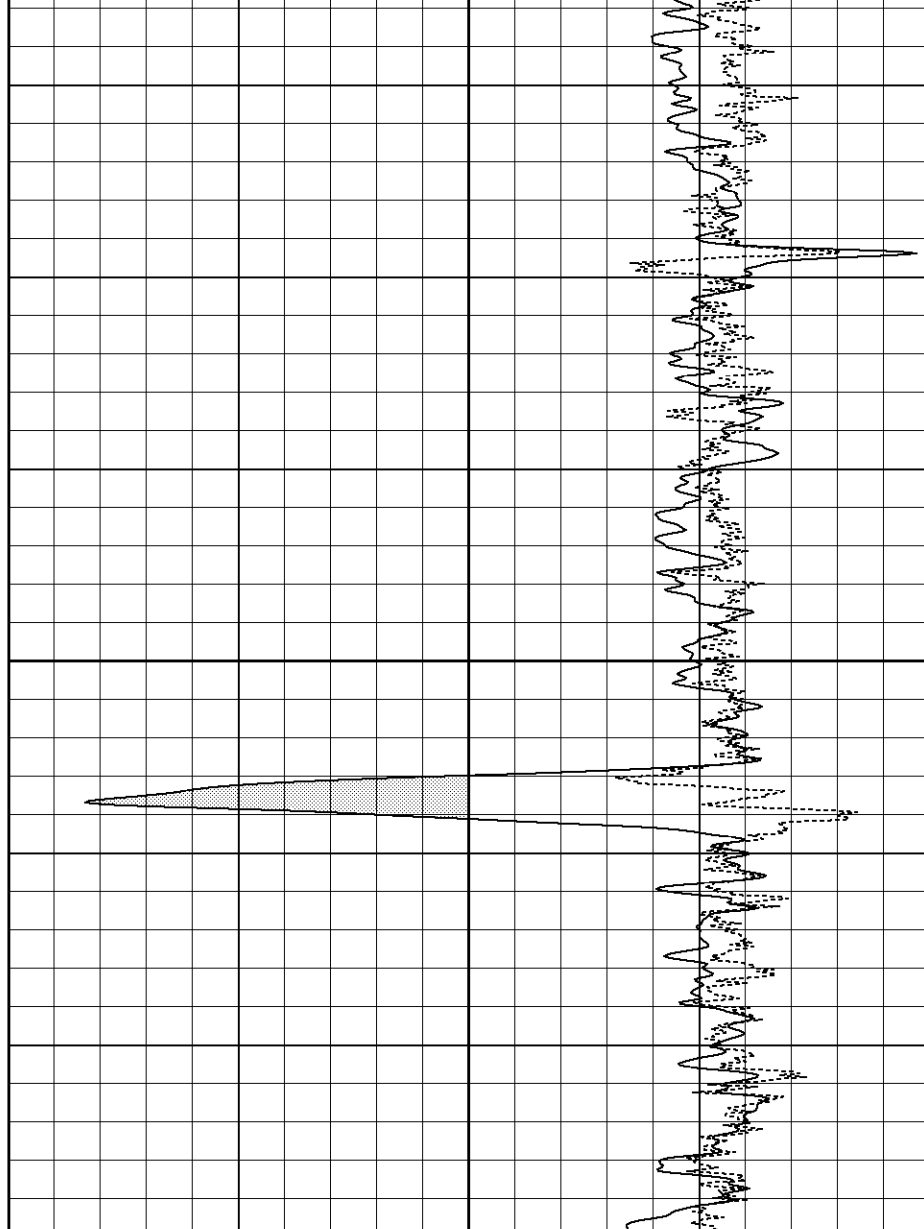
Surface Casing

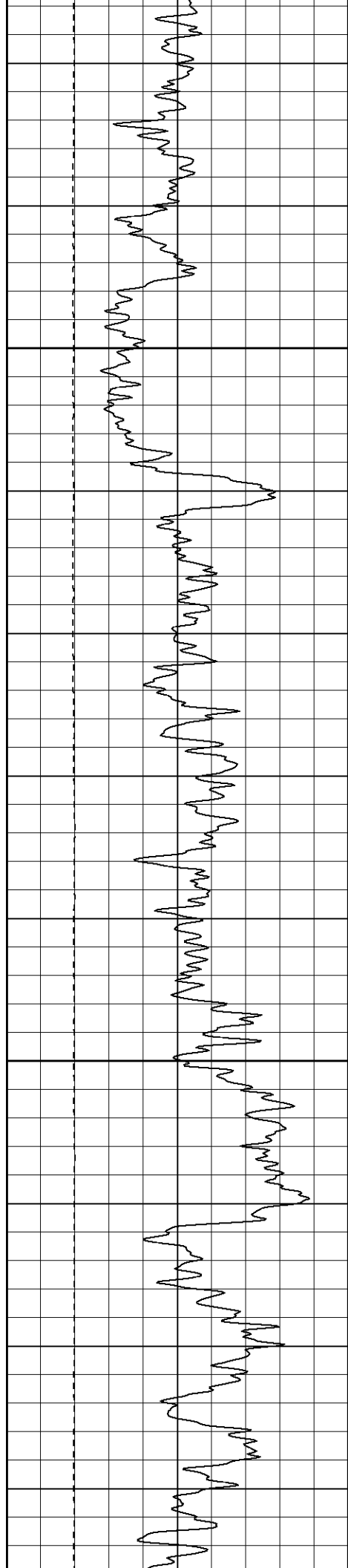






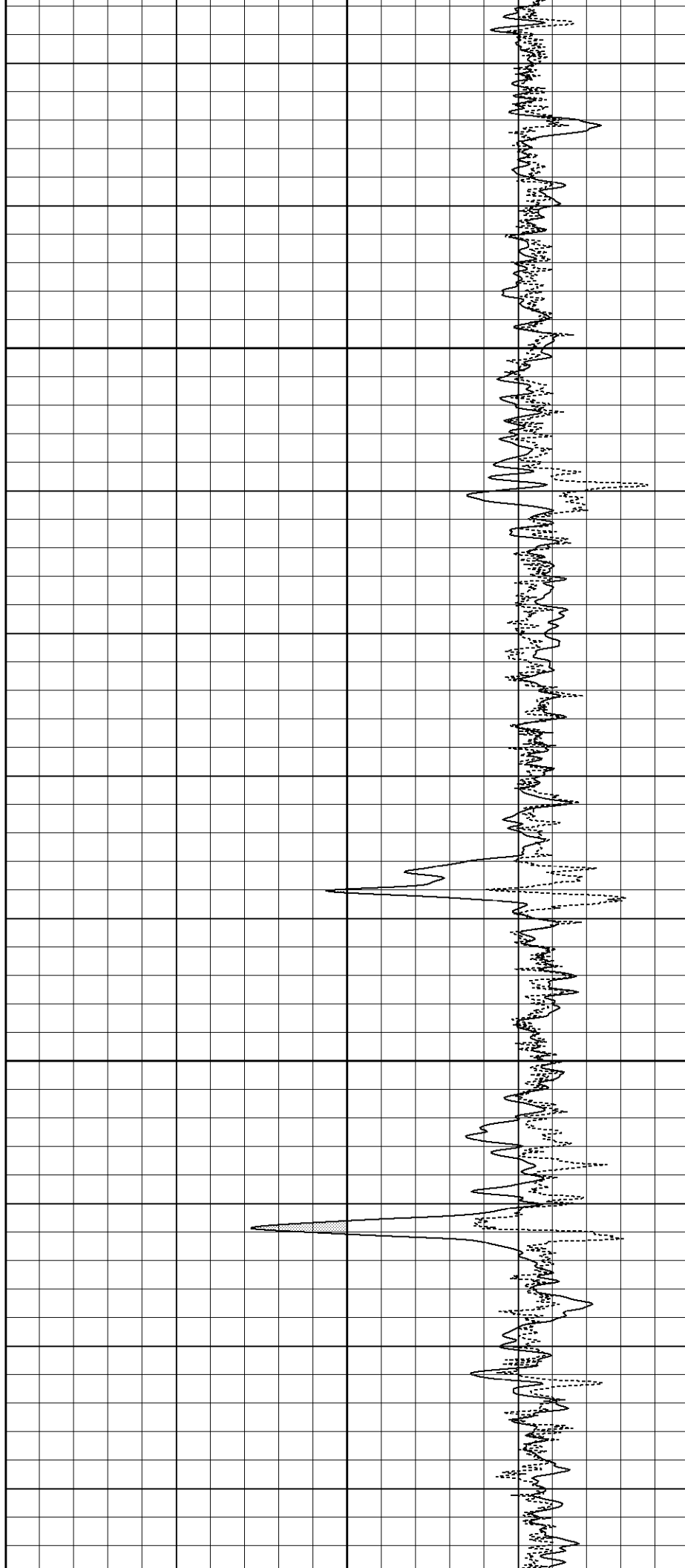
750



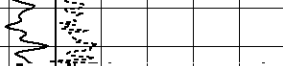
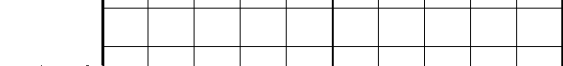
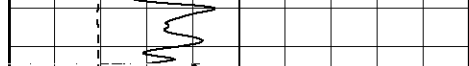


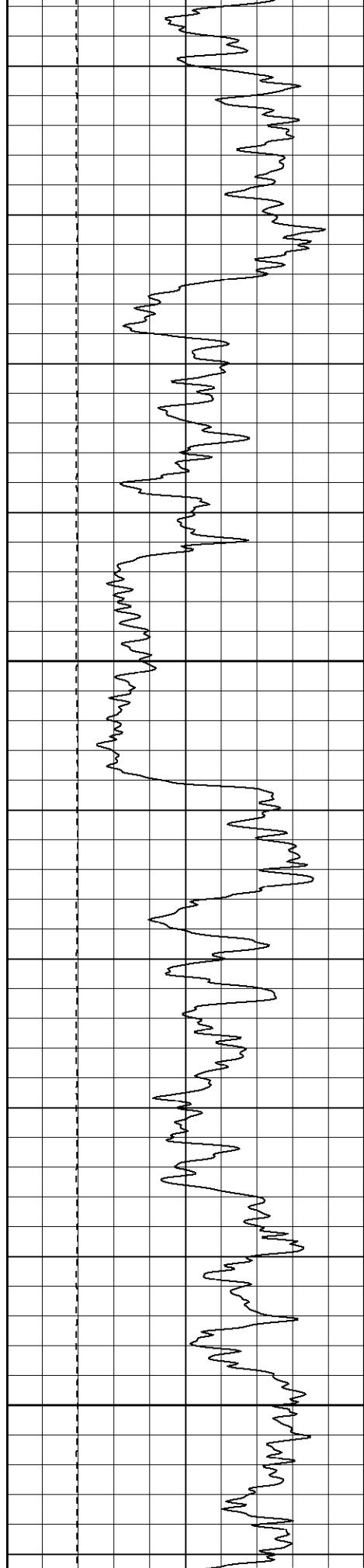
850

900



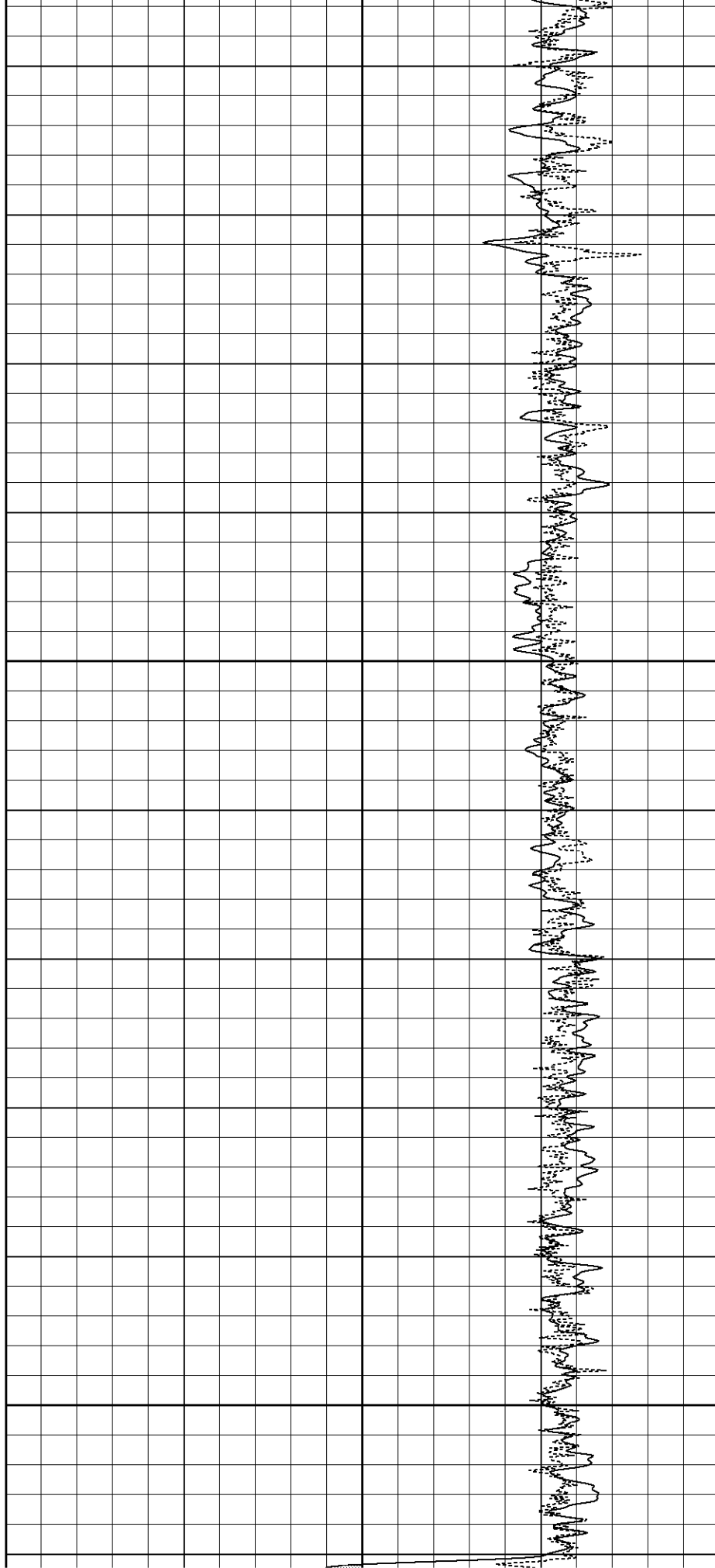


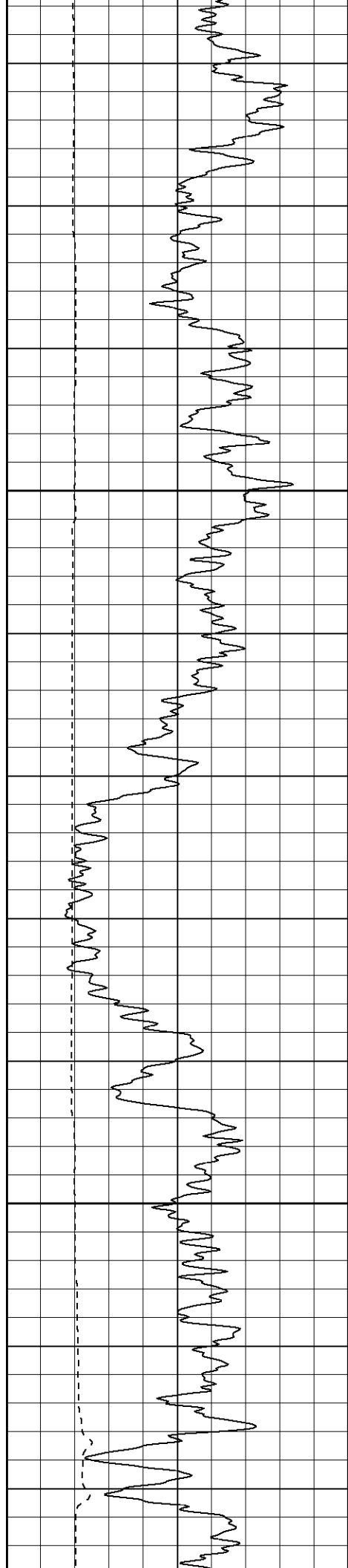




1200

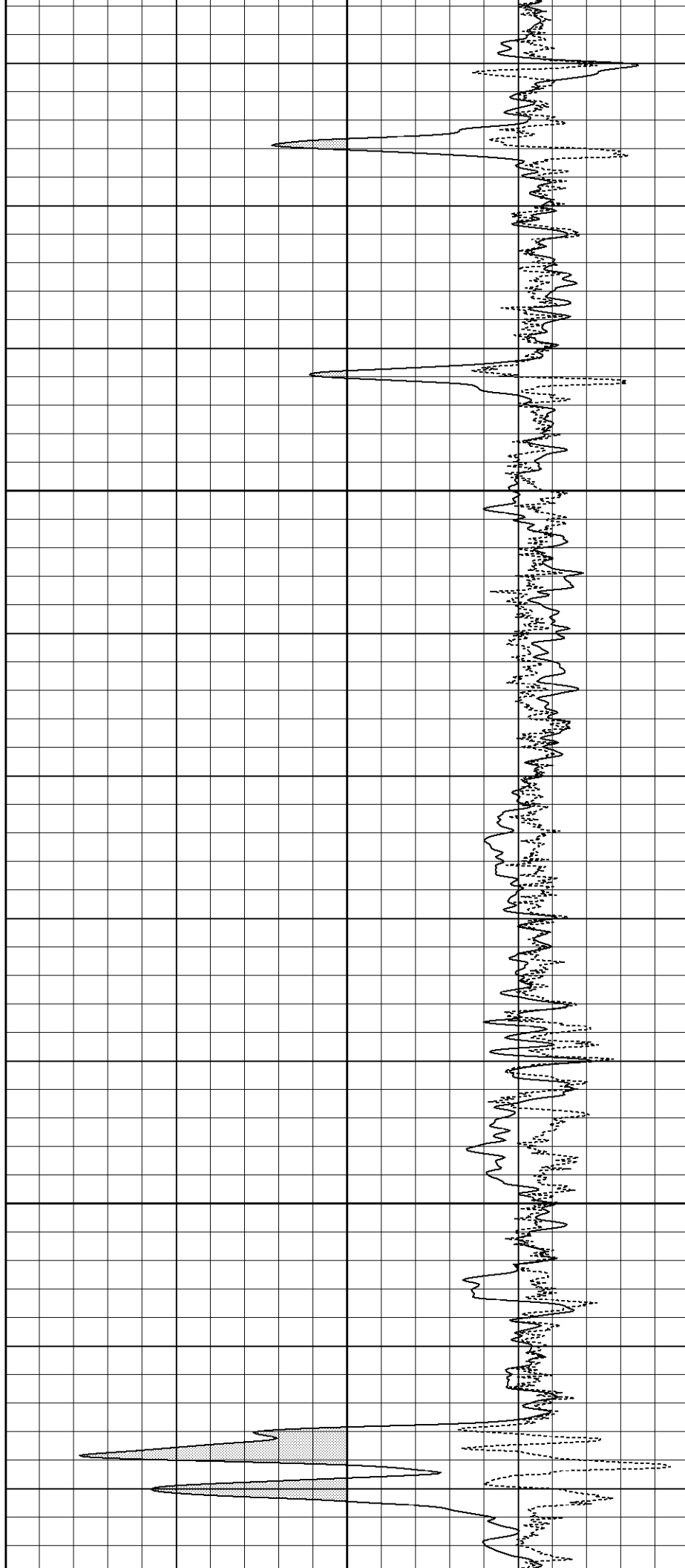
1250

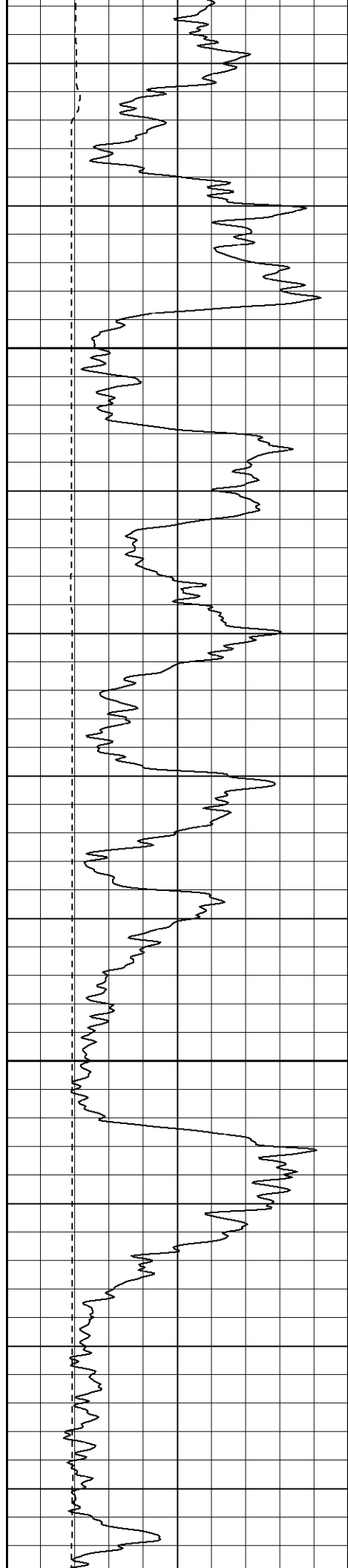




1300

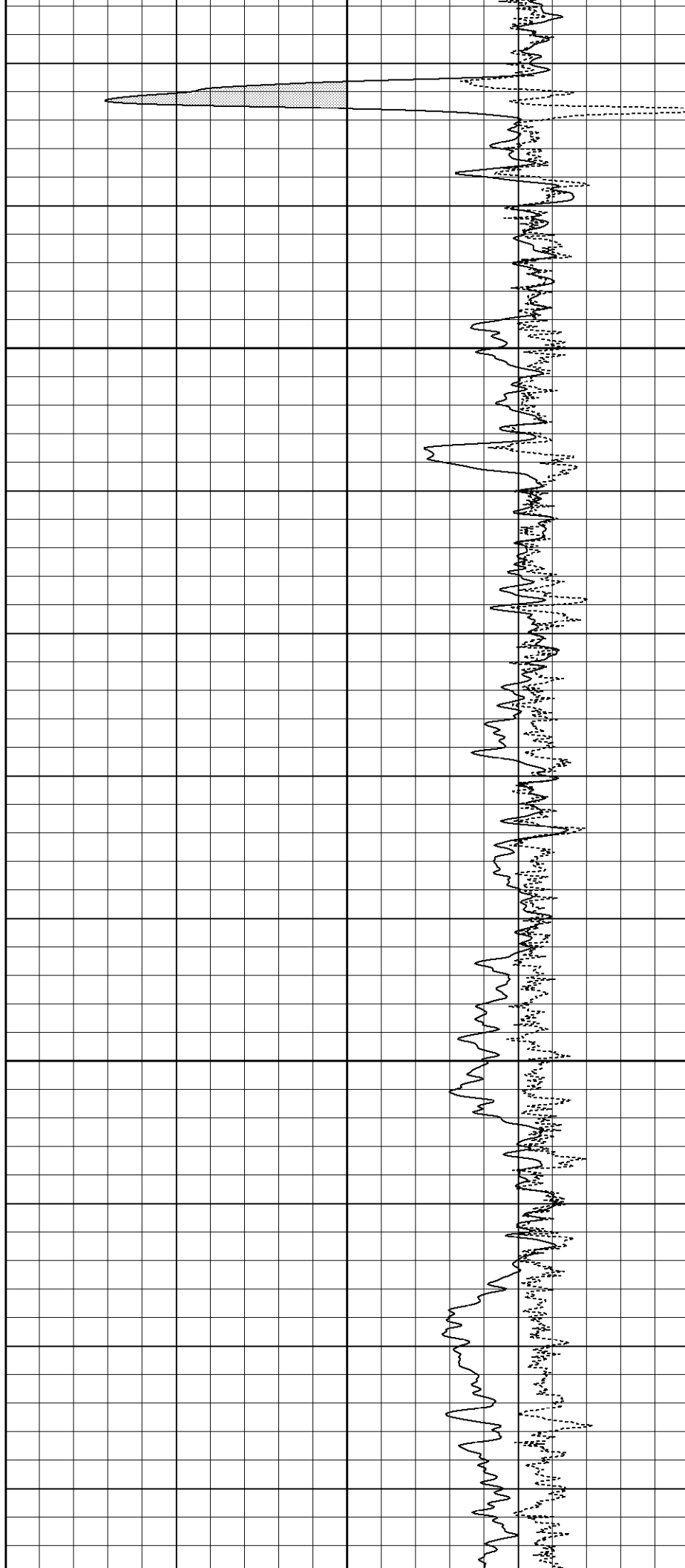
1350

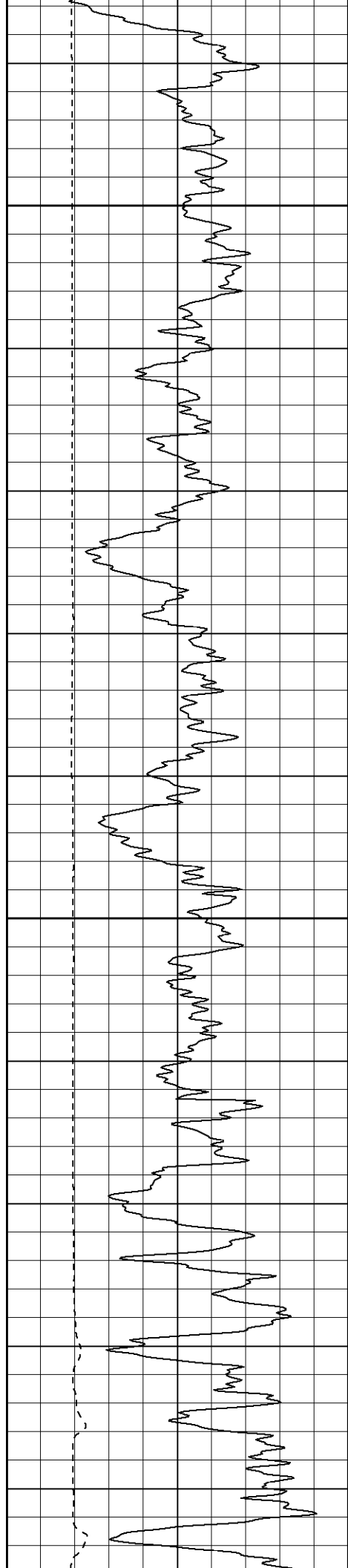




1400

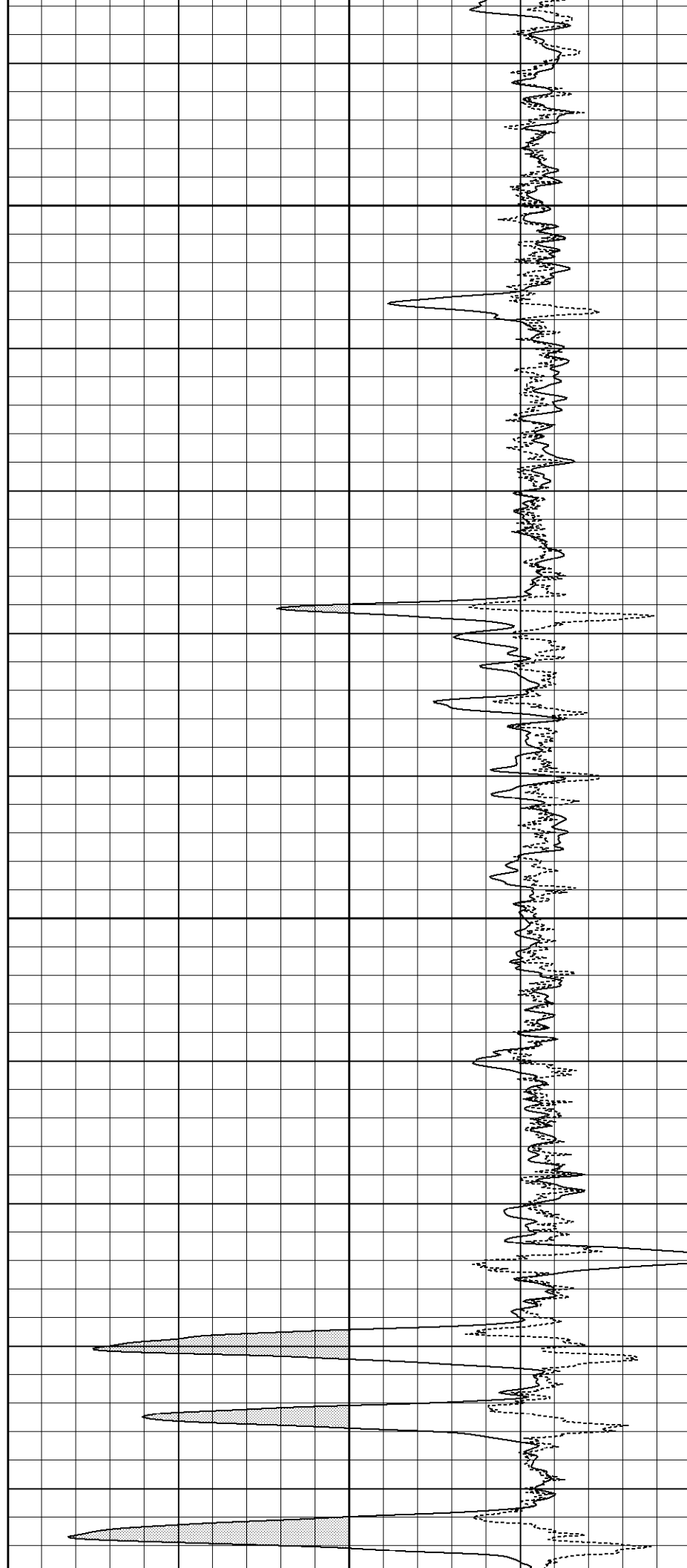
1450

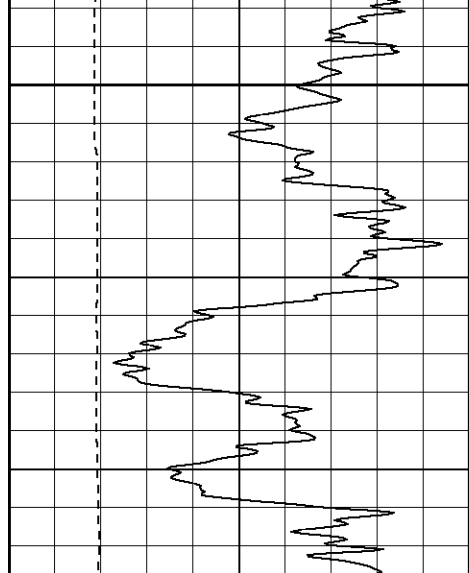




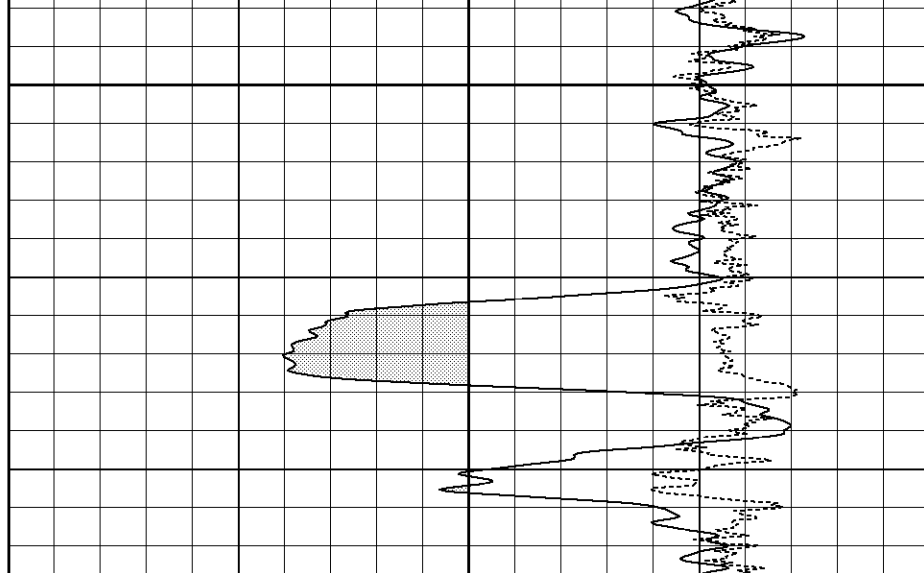
1500

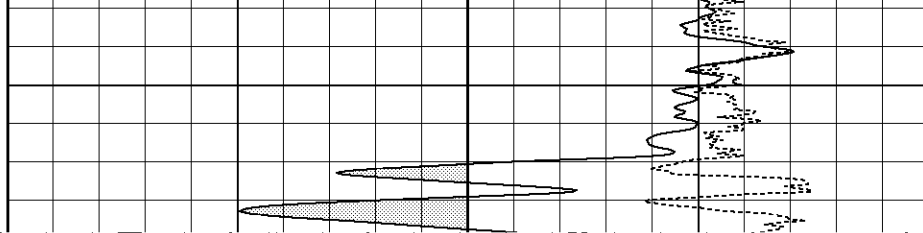
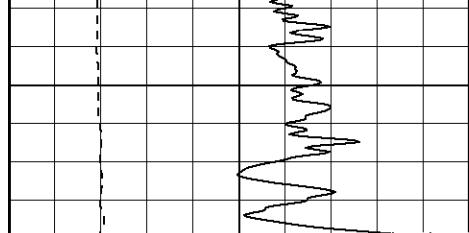
1550

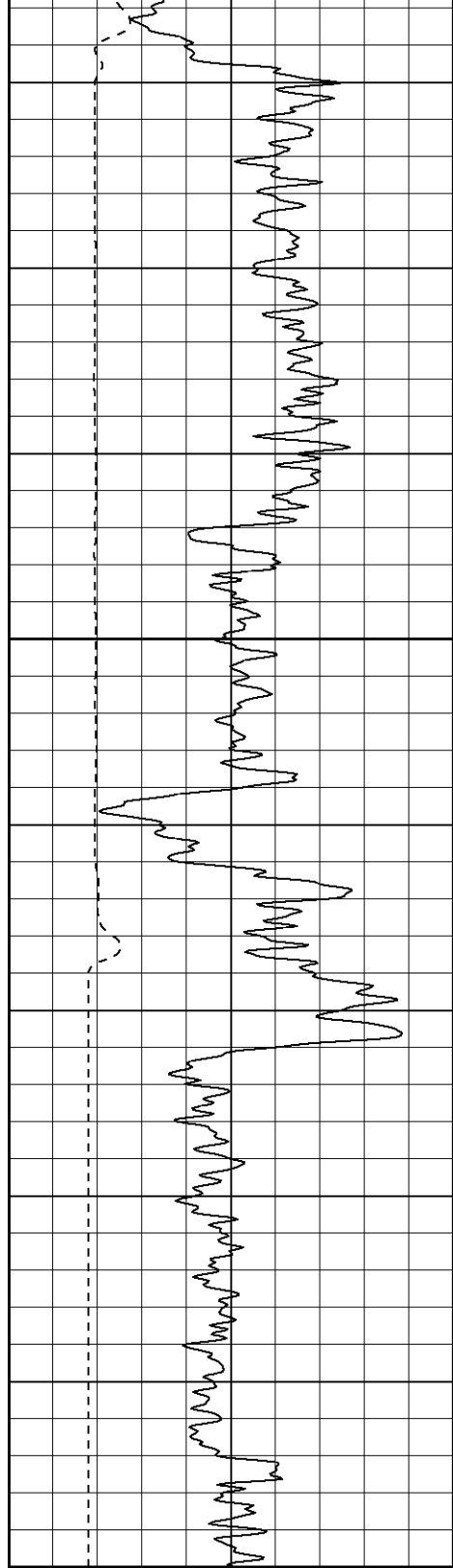




1600

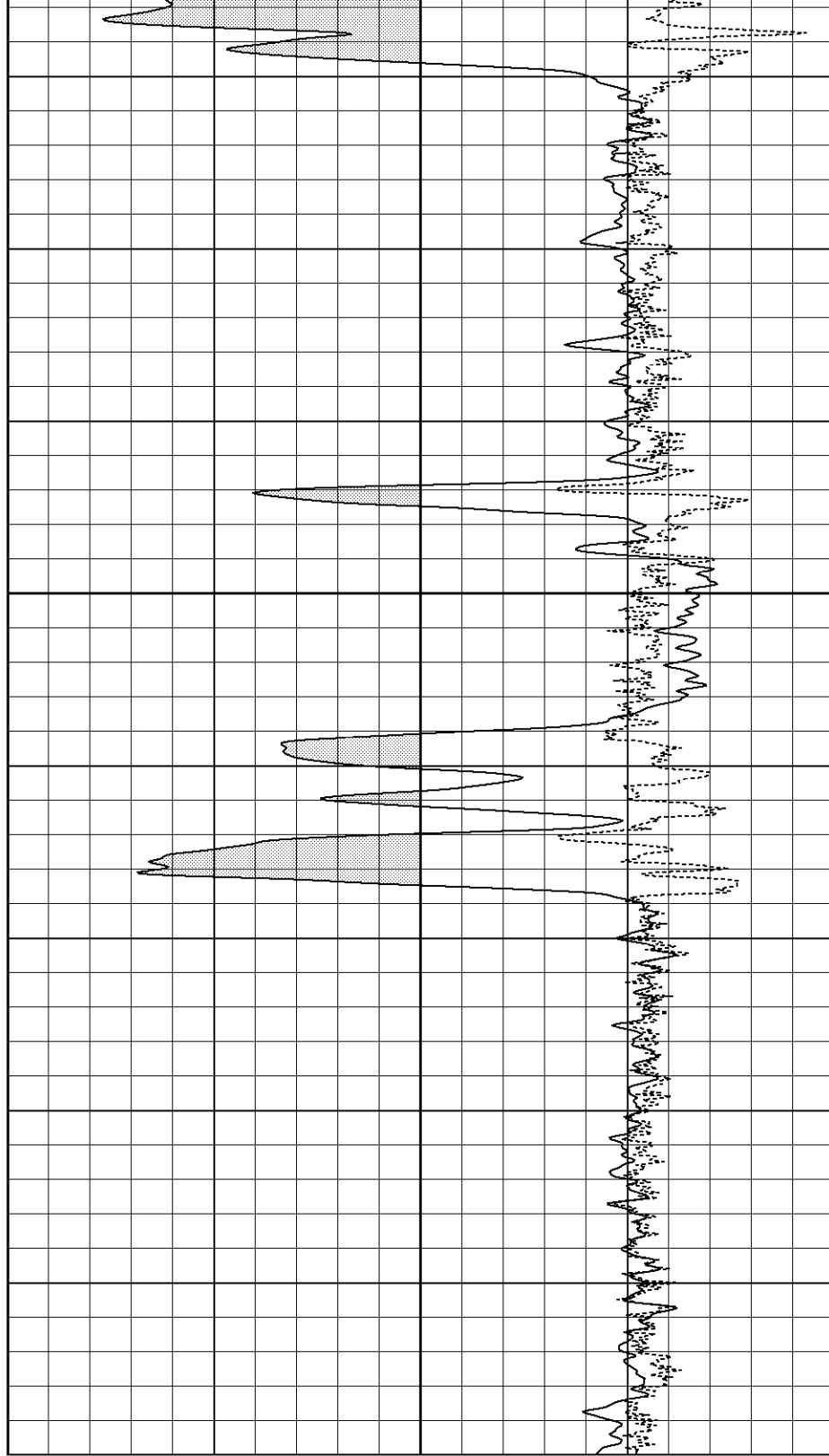


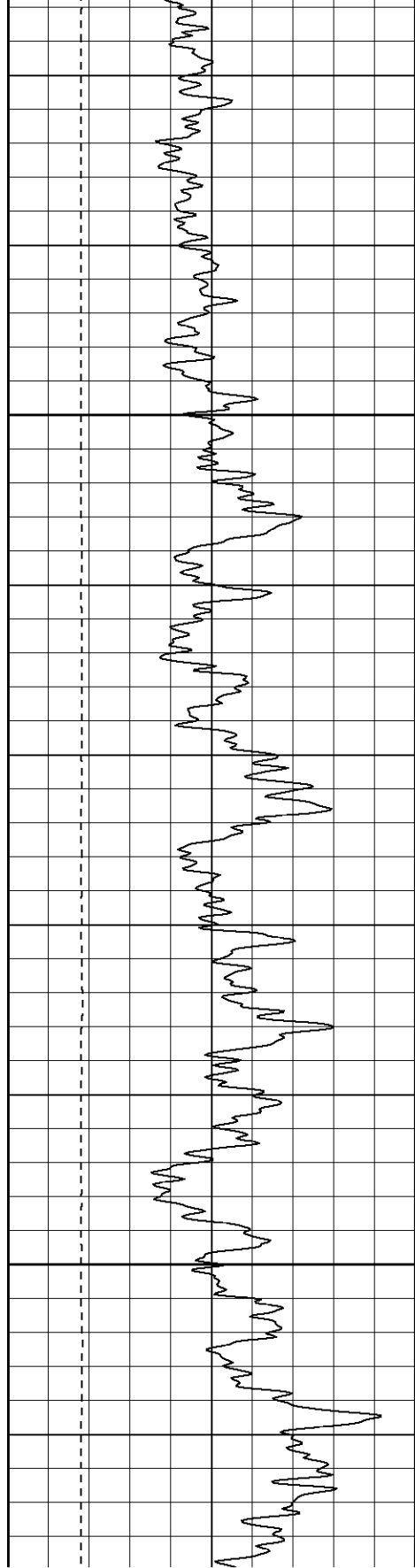




1850

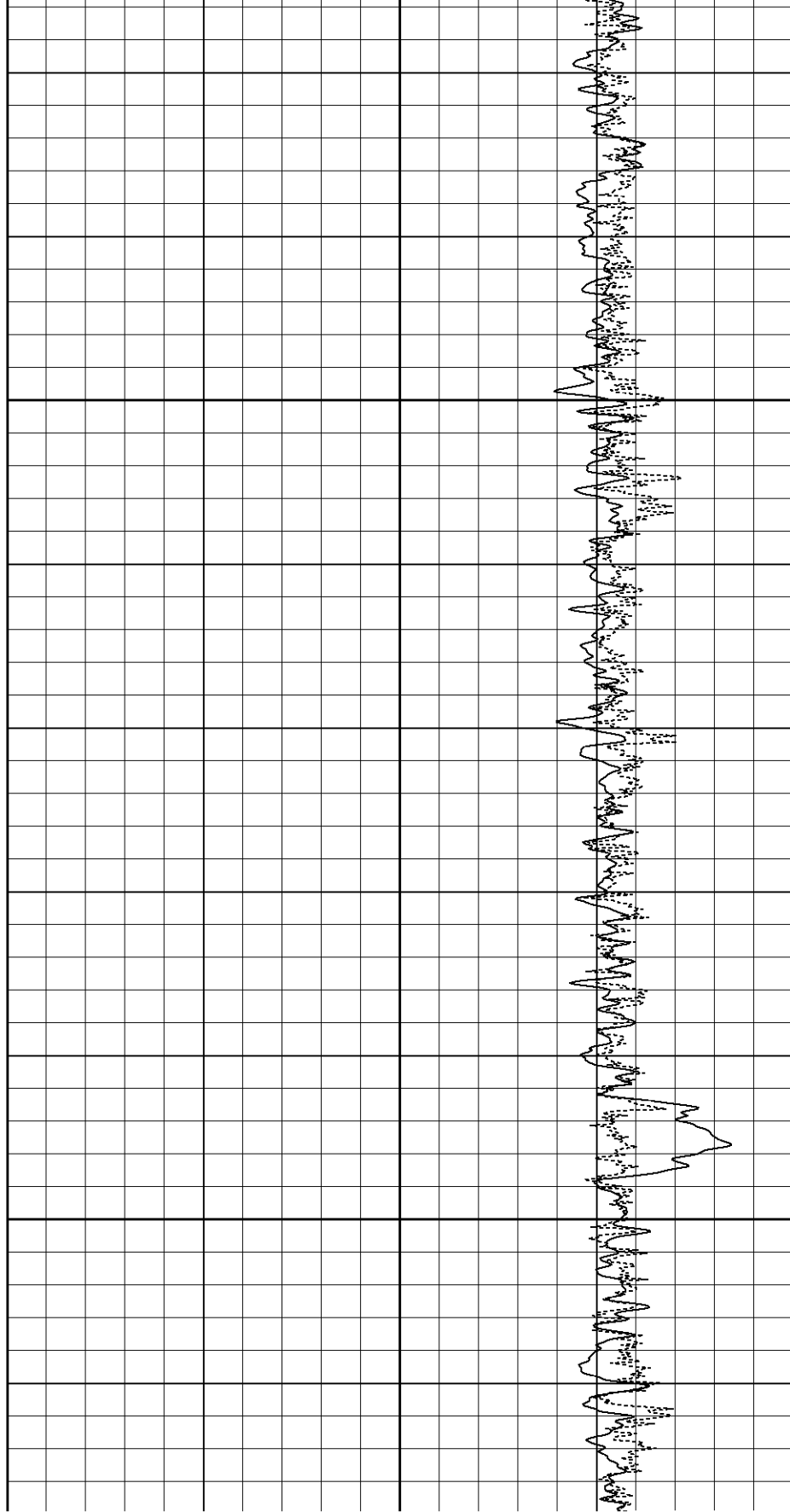
1900

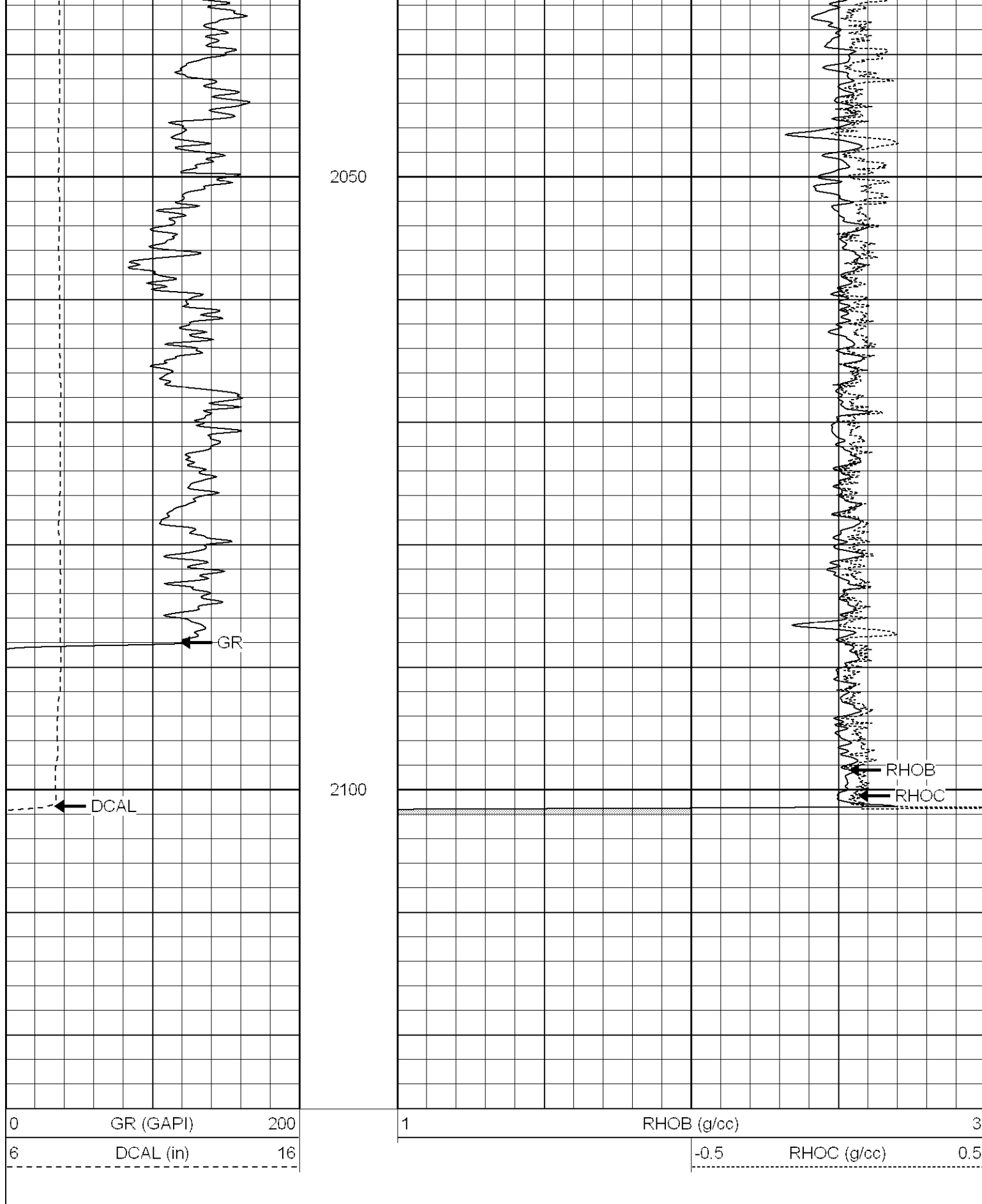




1950

2000





Dual Induction Calibration Report

Serial-Model:

5375-G

| Surface Calibration | | | | | | | | |
|---------------------|-------|-------|---|------------|---------|--------|---------|--------|
| Readings | | | | References | | | Results | |
| Loop: | Air | Loop | | Air | Loop | | m | b |
| Deep | 0.007 | 0.626 | V | 0.000 | 500.000 | mmho-m | 808.448 | -6.054 |
| Medium | 0.010 | 0.749 | V | 0.000 | 550.000 | mmho-m | 744.284 | -7.677 |
| Internal: | Zero | Cal | | Zero | Cal | | m | b |
| Deep | 0.007 | 0.626 | V | 0.000 | 500.000 | mmho-m | 808.280 | -5.935 |
| Medium | 0.010 | 0.749 | V | 0.000 | 550.000 | mmho-m | 744.155 | -7.535 |


| Downhole Calibration | | | | | | | | |
|----------------------|--------|---------|--------|------------|---------|--------|---------|--------|
| Readings | | | | References | | | Results | |
| Internal: | Zero | Cal | | Zero | Cal | | m | b |
| Deep | -0.286 | 500.148 | mmho-m | -0.118 | 499.985 | mmho-m | 0.999 | 0.168 |
| Medium | -0.377 | 549.918 | mmho-m | -0.141 | 549.955 | mmho-m | 1.000 | 0.236 |
| Shallow | 2.509 | 0.018 | V | 500.000 | 2.000 | Ohm-m | 199.883 | -1.536 |

| |
|----------------------------------------|
| Compensated Density Calibration Report |
|----------------------------------------|

| | |
|-------------------------------|--------------------------|
| Serial-Model: | 902-2.75POH |
| Source / Verifier: | / |
| Master Calibration Performed: | Fri Jul 07 09:05:02 2006 |

| Master Calibration | | | | | |
|---------------------|---------|------|-----------------------------|---------------|-----|
| | Density | | Far Detector | Near Detector | |
| Magnesium | 1.710 | g/cc | 937.76 | 456.53 | cps |
| Aluminum | 2.590 | g/cc | 165.85 | 225.46 | cps |
| Spine Angle = 67.84 | | | Density/Spine Ratio = 0.470 | | |
| | Size | | Reading | | |

| | | |
|---------------------|--------|----------|
| Background Reading: | 0.0 | cps |
| Calibrator Reading: | 1.0 | cps |
| Sensitivity: | 0.6000 | GAPI/cps |

| Sensor | Offset (ft) | Schematic | Description | Len (ft) | OD (in) | Wt (lb) |
|--------|-------------|------------------------------------------------------------------------------------|---------------------------------------|----------|---------|---------|
| CHD | 39.37 |  | None | 0.75 | 1.50 | 5.00 |
| GR | 37.64 | | GR-2.75POH (804) Probe | 3.73 | 2.75 | 43.00 |
| NEU | 32.10 | | NEU-2.75POH (802) Probe Epithermal | 4.75 | 2.75 | 58.00 |
| LSD | 24.47 | | CDL-2.75POH (902) Probe | 8.43 | 2.75 | 106.00 |
| DCAL | 24.19 | | Probe | 0.89 | 3.50 | 20.00 |
| SSD | 23.95 | | | | | |
| 10pin | 21.72 | | | | | |
| CILD | 10.60 | | | | | |
| SP | 10.60 | | DIL-G (5375) Gearhart | 20.83 | 4.00 | 345.00 |
| CILM | 6.89 | | | | | |
| RLL3 | 1.70 | | | | | |

| | |
|---------------|----------------------------------|
| Dataset: | /field/well/run1/_plots/_jobs_/d |
| Total Length: | 39.37 ft |
| Total Weight: | 577.00 lb |
| O.D. | 4.00 in |