

Patterson

**CEMENT BOND
GAMMA RAY**

CompanyXTO Energy Inc.		Company XTO Energy Inc.	
Well	Hill Ranch 22-16	Well	Hill Ranch 22-16
Field	Purgatorie River	Field	Purgatorie River
County	Las Animas	County	Las Animas
State	CO	State	CO
Location:		AP1 # : 05 071 08792 00	
SEC 22 TWP 34S RGE 67W		423' FSL & 379' FEL	
Permanent Datum	Ground Level	Elevation	7820'
Log Measured From	Ground Level		
Drilling Measured From	Ground Level	Elevation	7820'
Date		9/22/06	
Run Number	one		
Depth Driller	2450'		
Depth Logger	2271'		
Bottom Logged Interval	2267'		
Top Log Interval	Surf.		
Open Hole Size	7 7/8"		
Type Fluid	water		
Density / Viscosity	///		
Max. Recorded Temp.	///		
Estimated Cement Top	2036'		
Time Well Ready	ROA		
Time Logger on Bottom	10:11		
Equipment Number	T244		
Location	Trinidad		
Recorded By	Worley		
Witnessed By			
Borehole Record		Tubing Record	
Run Number	Bit	From	To
		Size	Weight
			From
			To
Casing Record	Size	Wgt/Ft	Top
Surface String	8 5/8"		00
Prot. String			
Production String	5 1/2"		00
Liner			NA

<<< Fold Here >>>

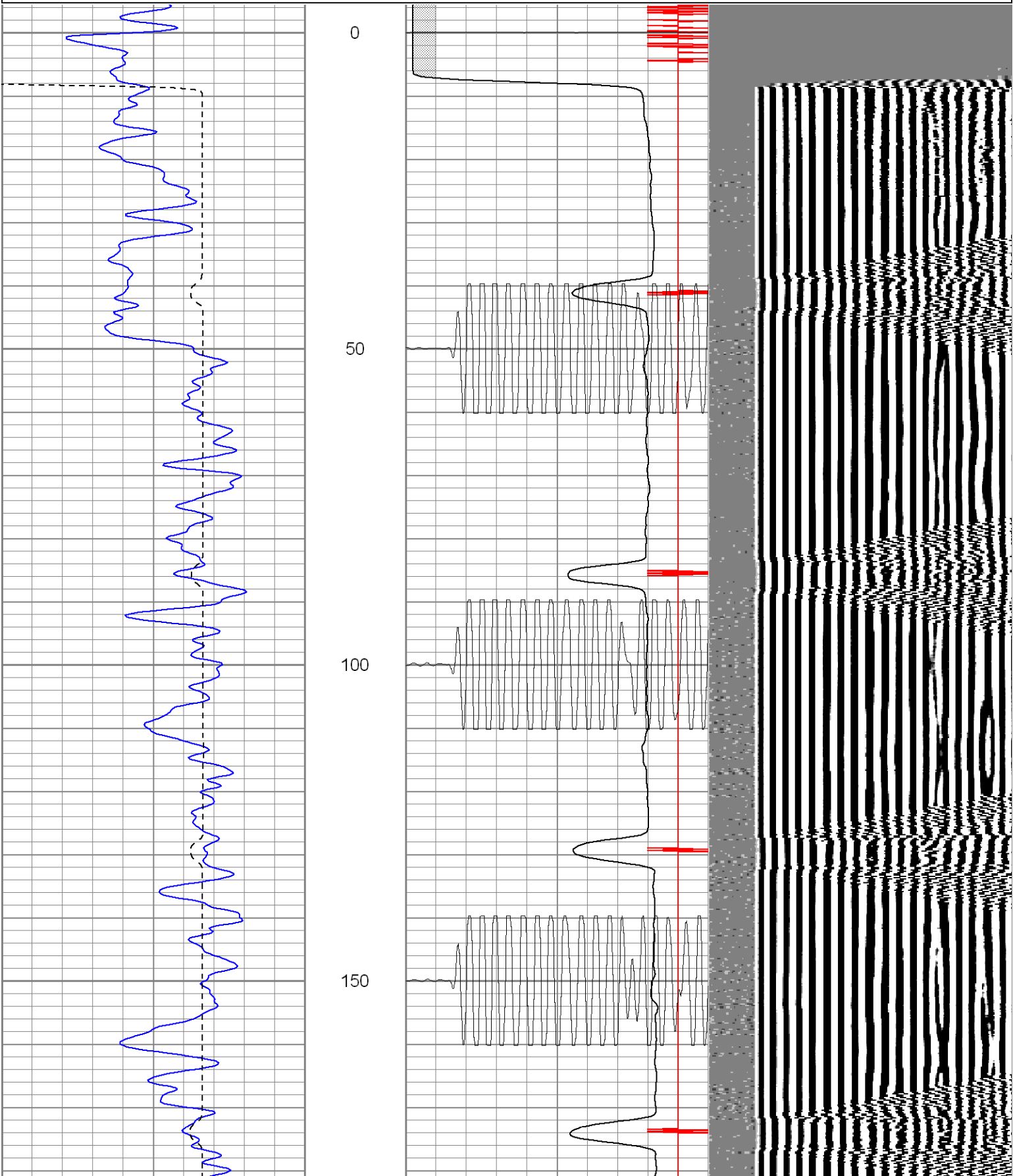
All interpretations are opinions based on inferences from electrical or other measurements and we cannot and do not guarantee the accuracy or correctness of any interpretation, and we shall not, except in the case of gross or willful negligence on our part, be liable or responsible for any loss, costs, damages, or expenses incurred or sustained by anyone resulting from any interpretation made by any of our officers, agents or employees. These interpretations are also subject to our general terms and conditions set out in our current Price Schedule.

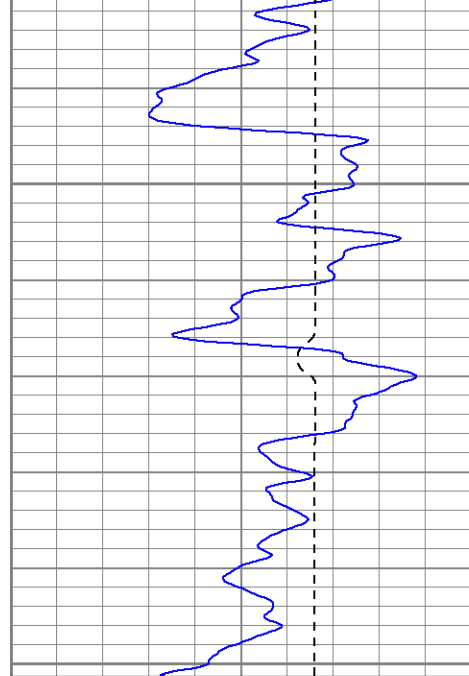
Comments

Up Lorencito Canyon 5.4 miles, turn right on road to XTO, stay on main road to white dumpster, turn right and stay on main road, go past compressor station stay on main road, drive thru Hill Ranch 22-12 location, take next right to Y and go left then next left to location.

Database File: hr22-16b92206.db
Dataset Pathname: pass2
Presentation Format: cblrt
Dataset Creation: Fri Sep 22 10:20:21 2006 by Log Warrior 7.0 STD Cas
Charted by: Depth in Feet scaled 1:240

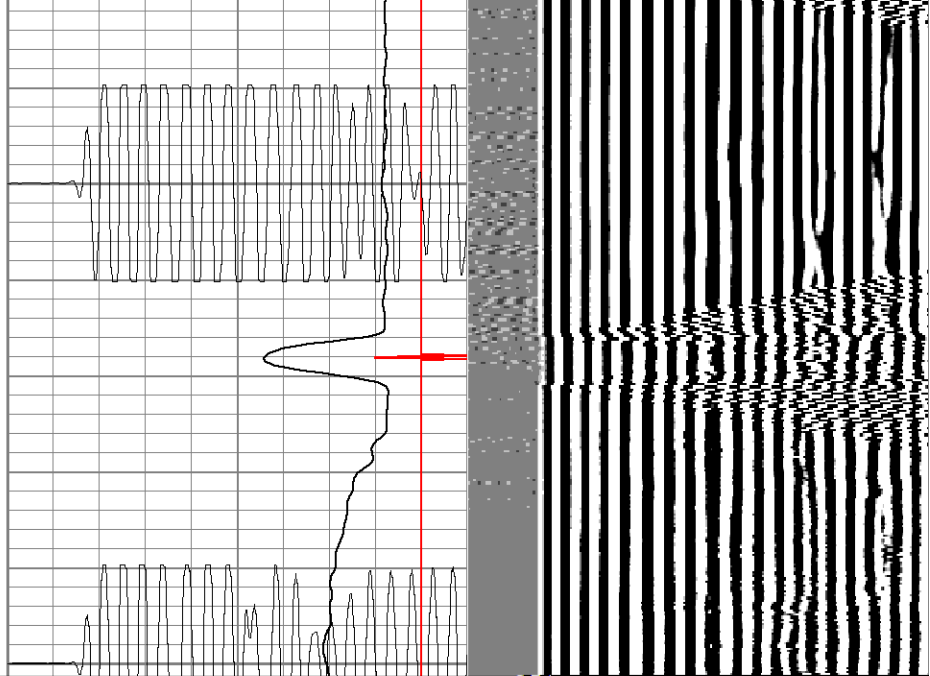
0	GR (GAPI)	200	0	AMP3 (mV)	100	200	Variable Density	1200
400	TT3 (usec)	200	18	CCL	-2			
			200	CBL5	1200			

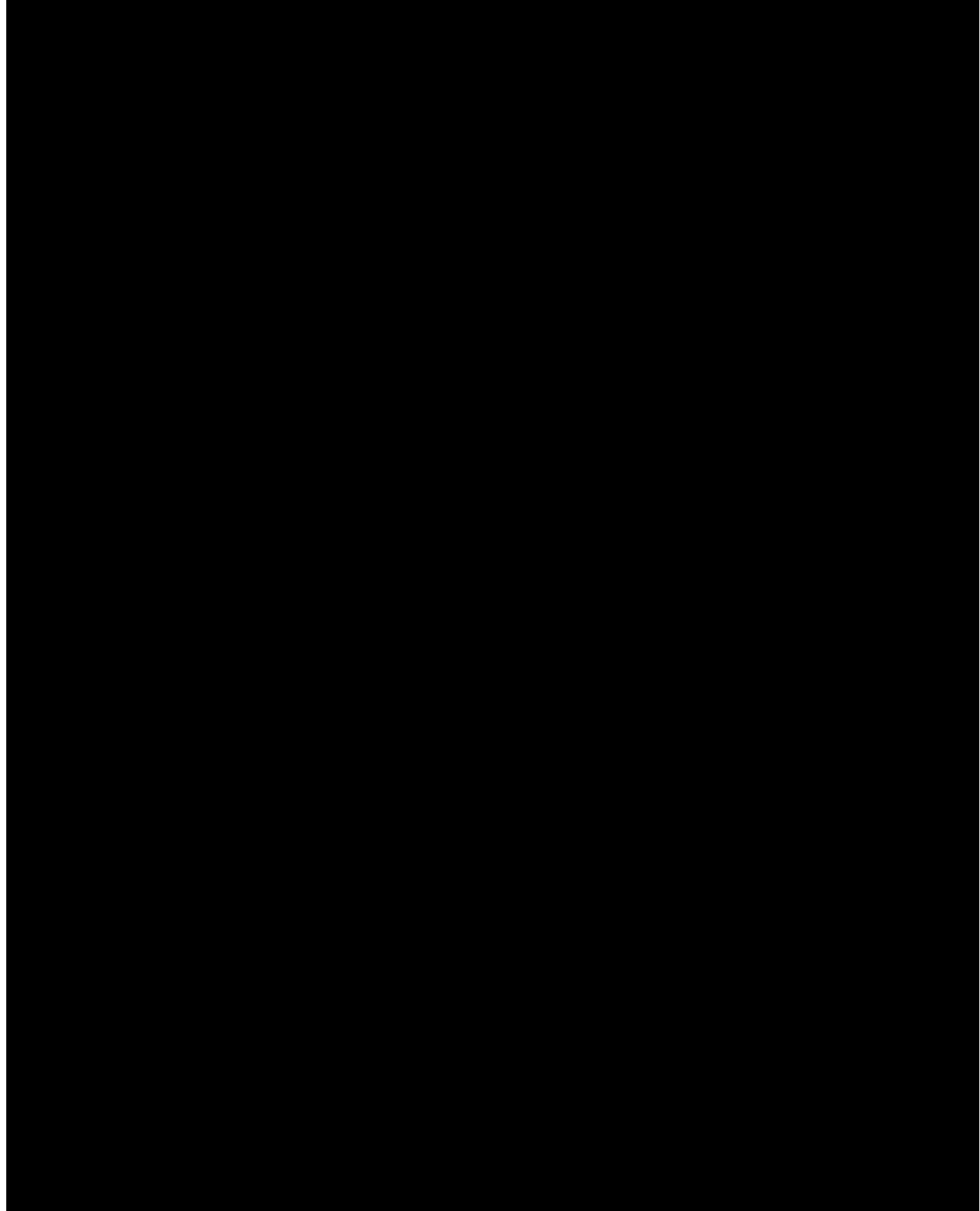
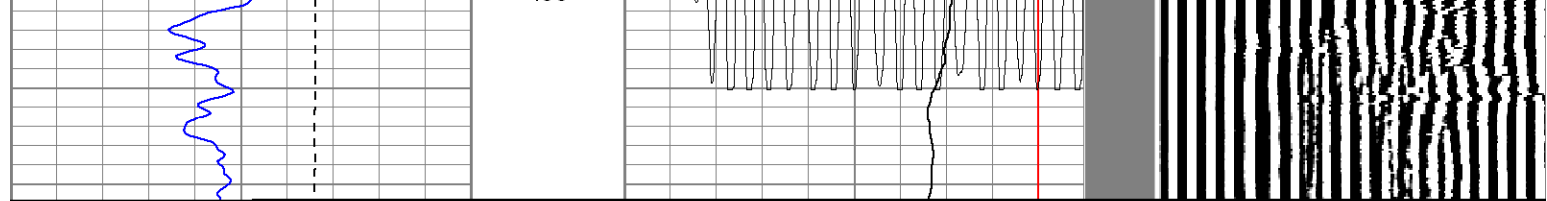


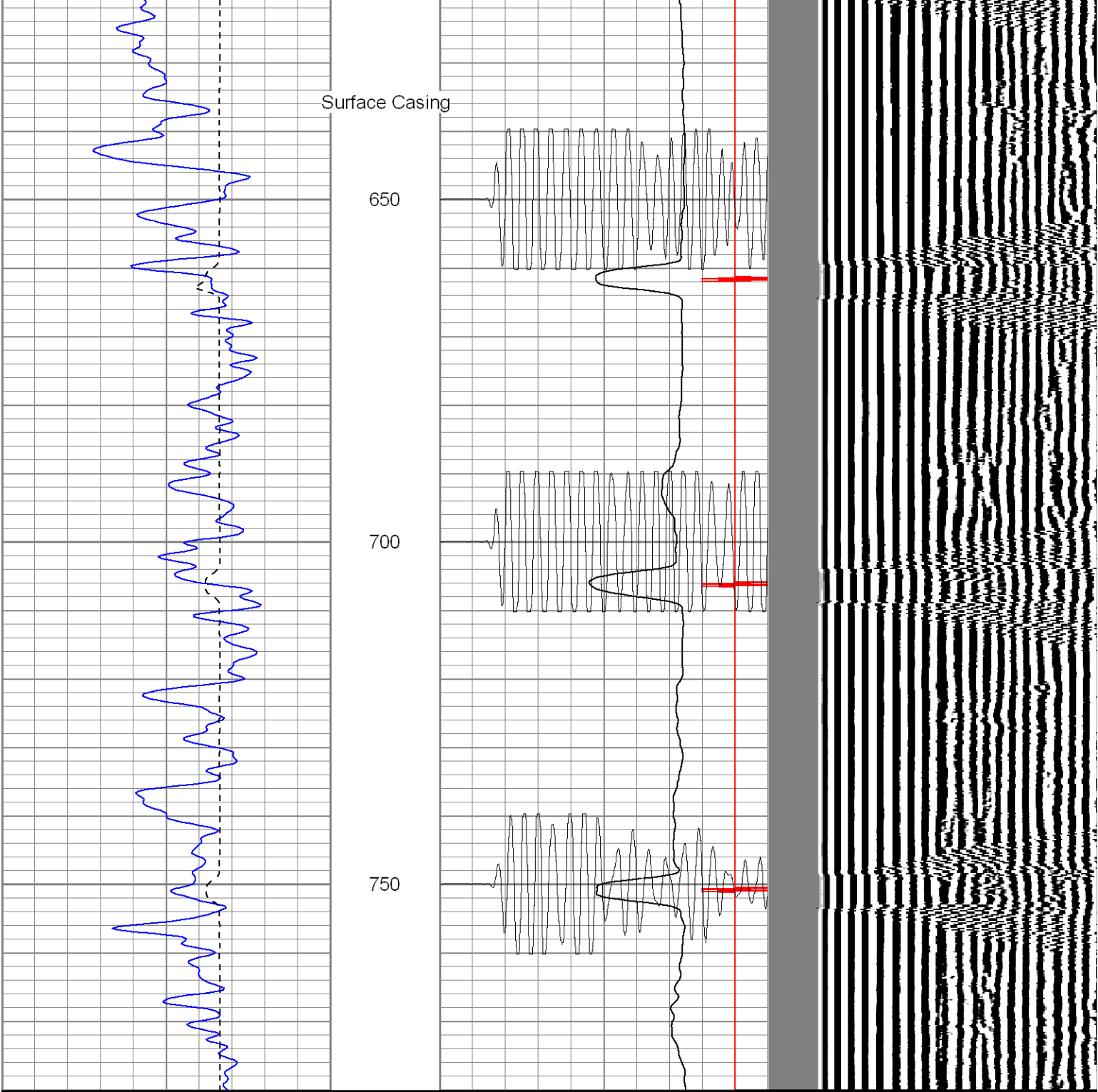


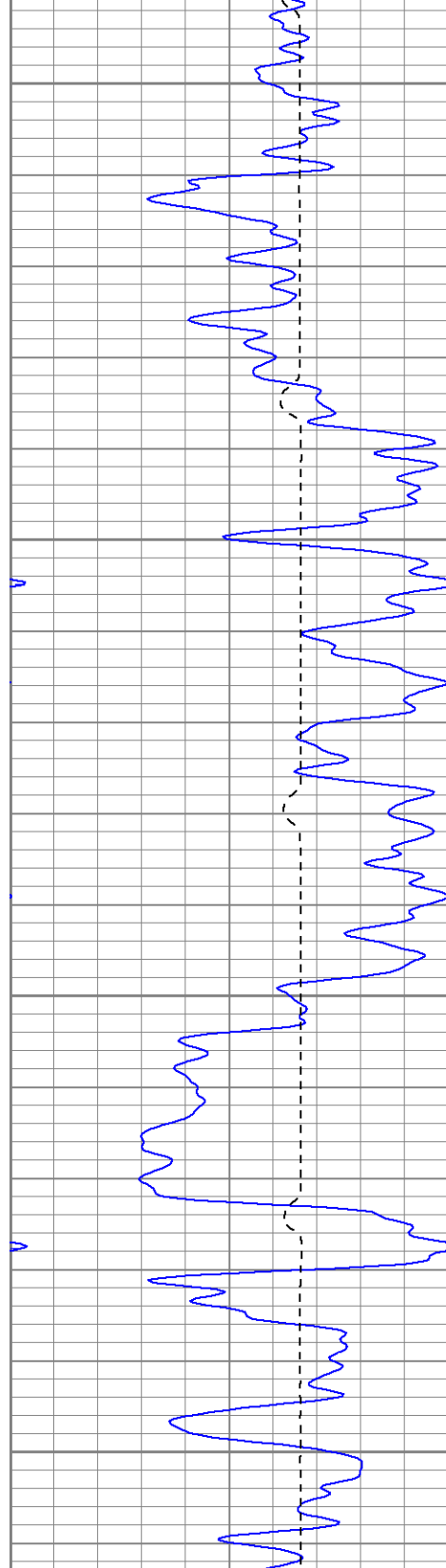
200

250







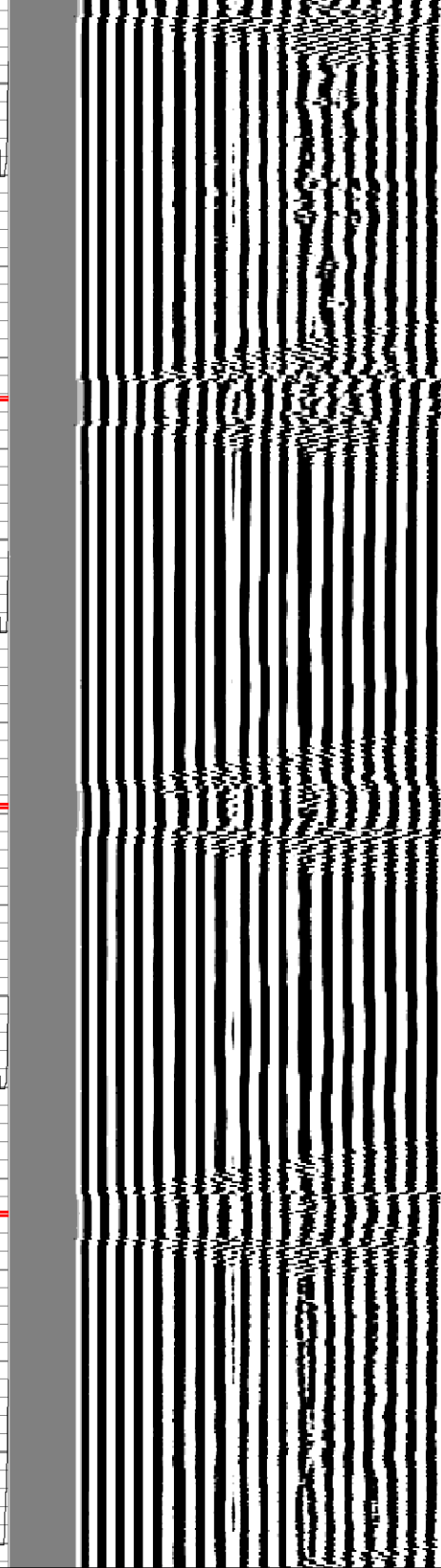


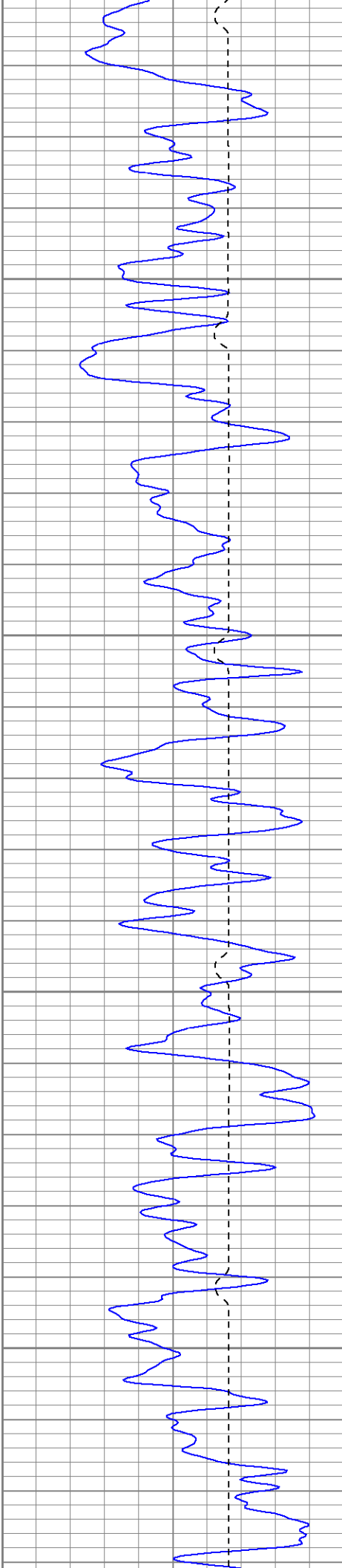
850

900

950

1000



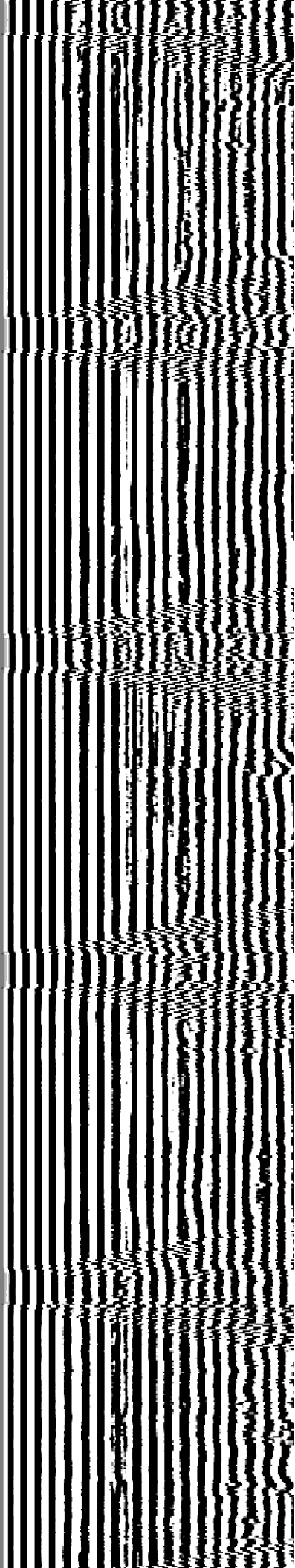
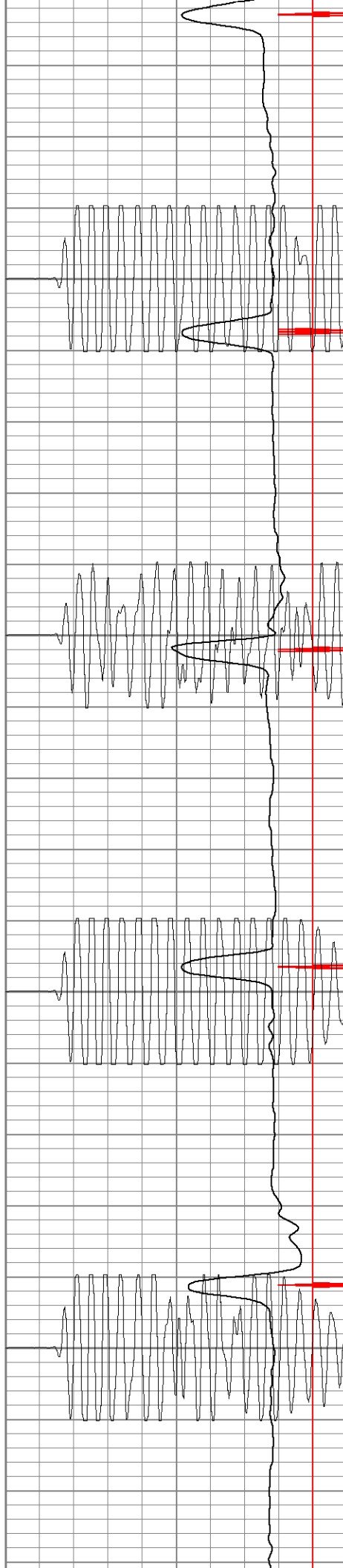


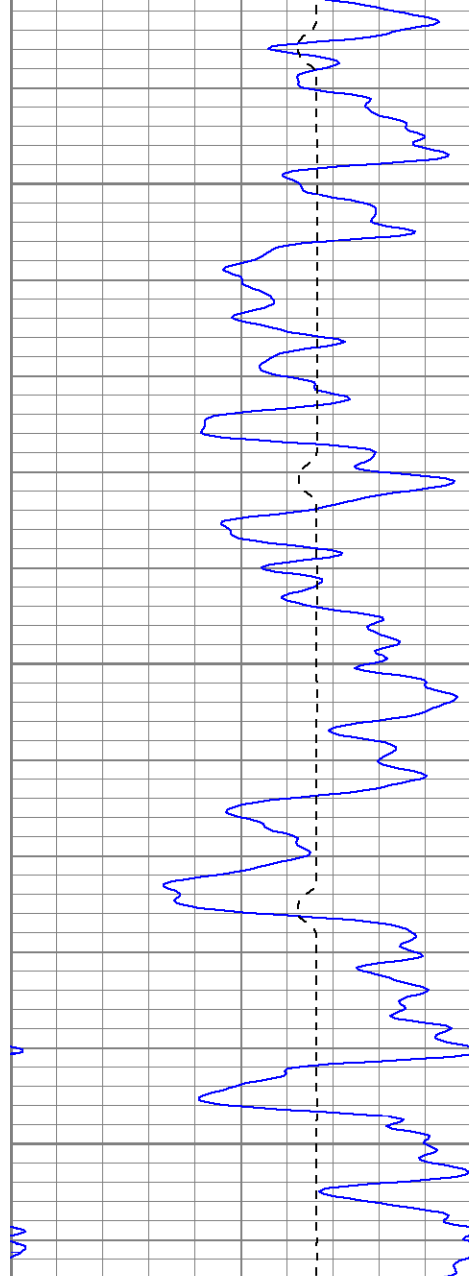
1100

1150

1200

1250

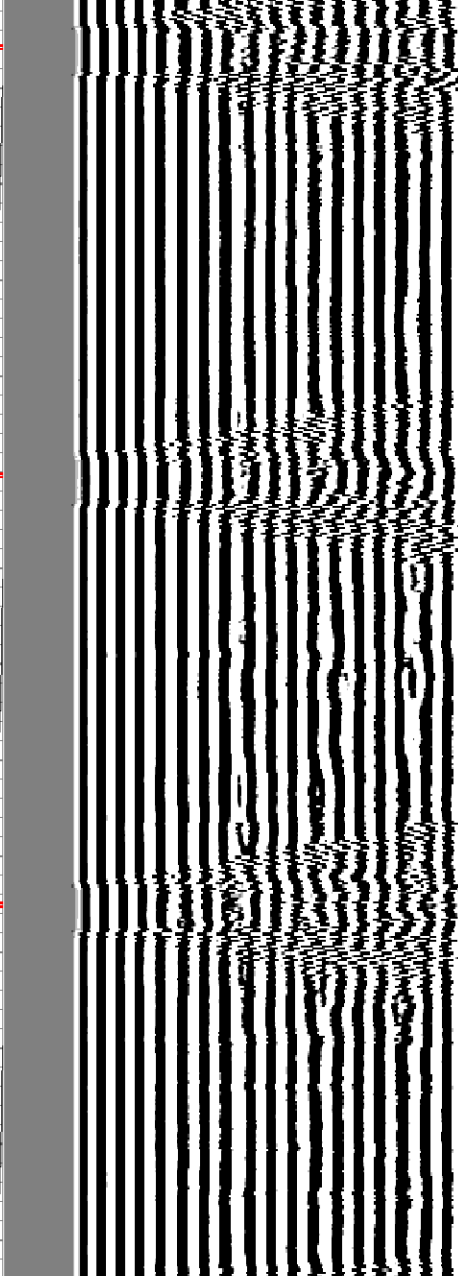
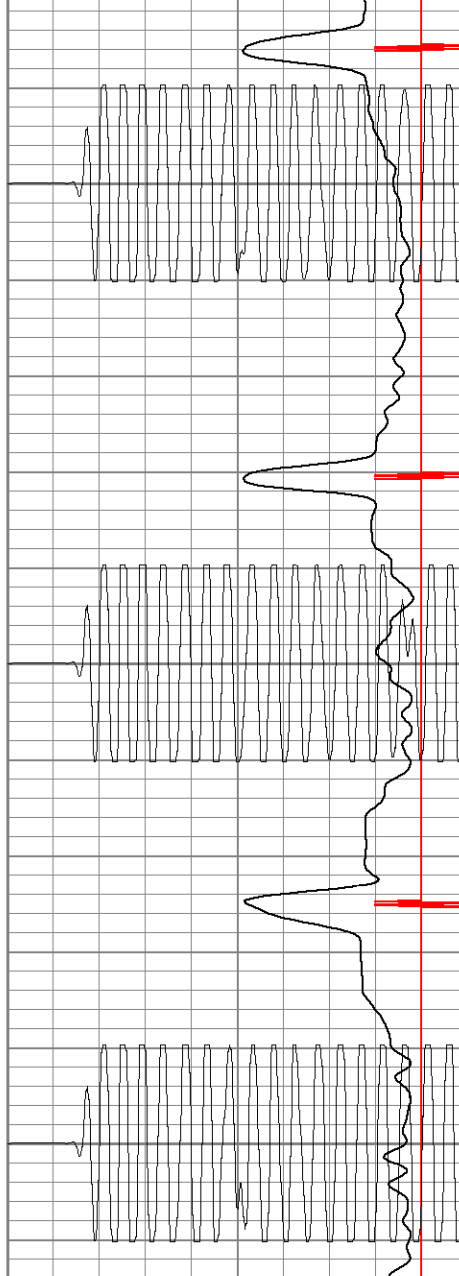


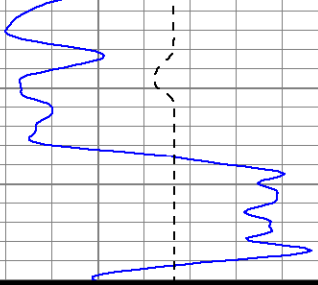


1300

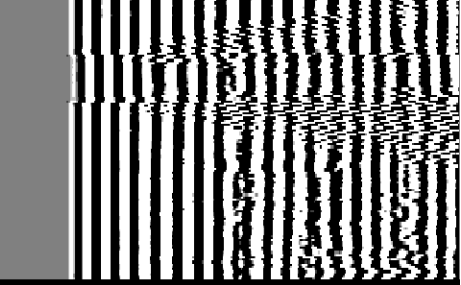
1350

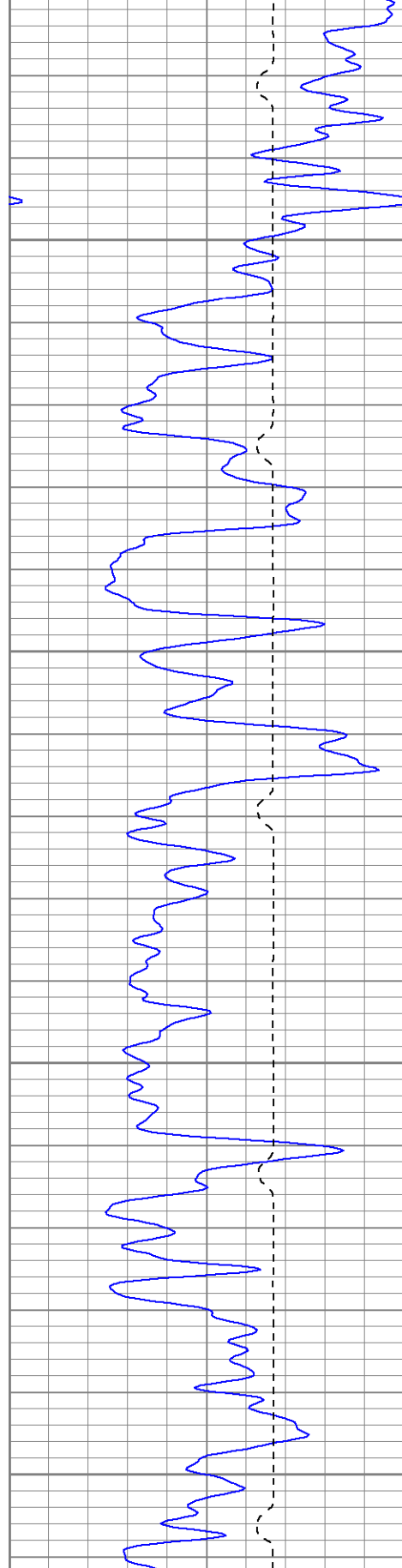
1400





1000



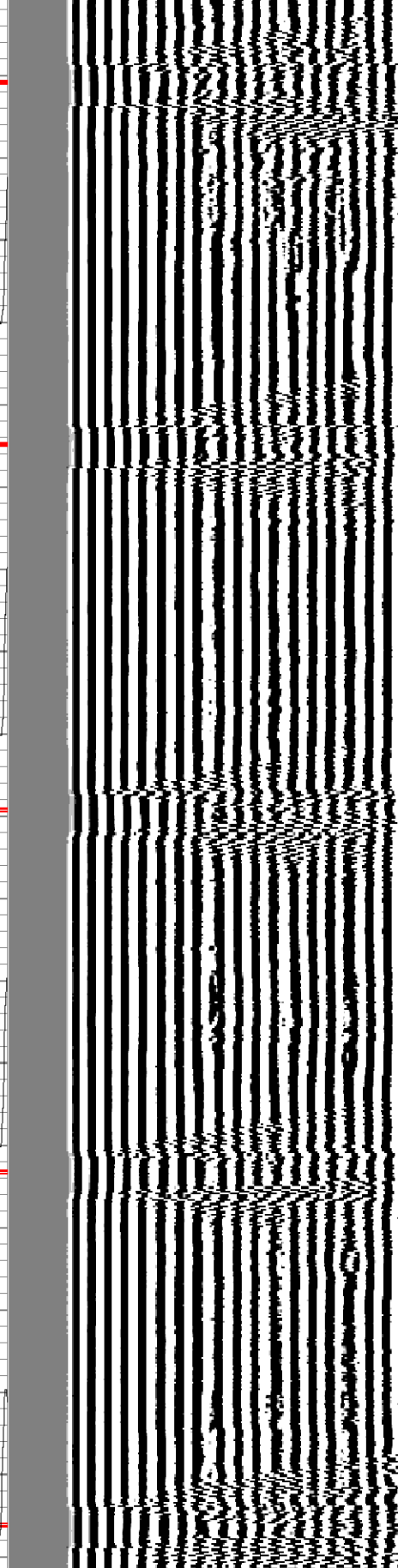


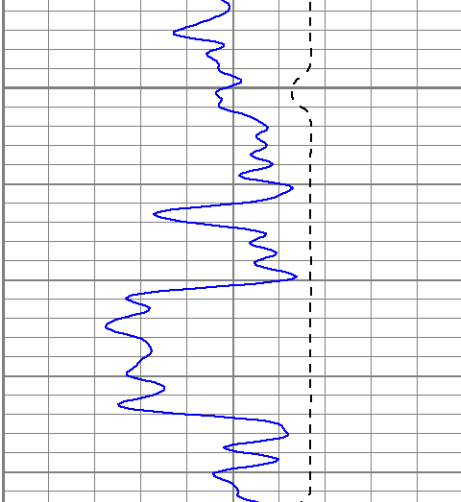
1750

1800

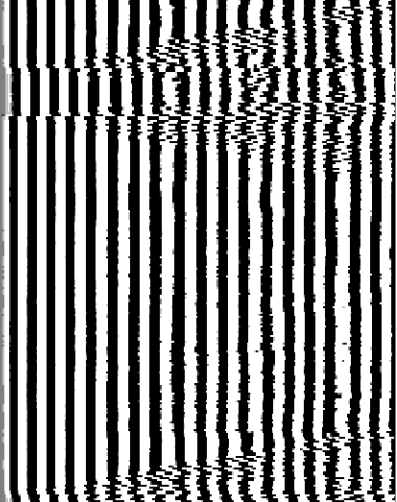
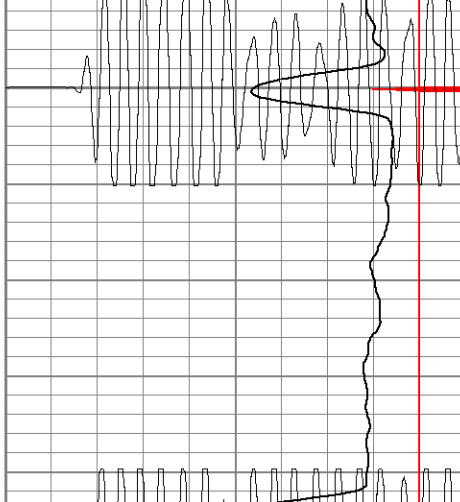
1850

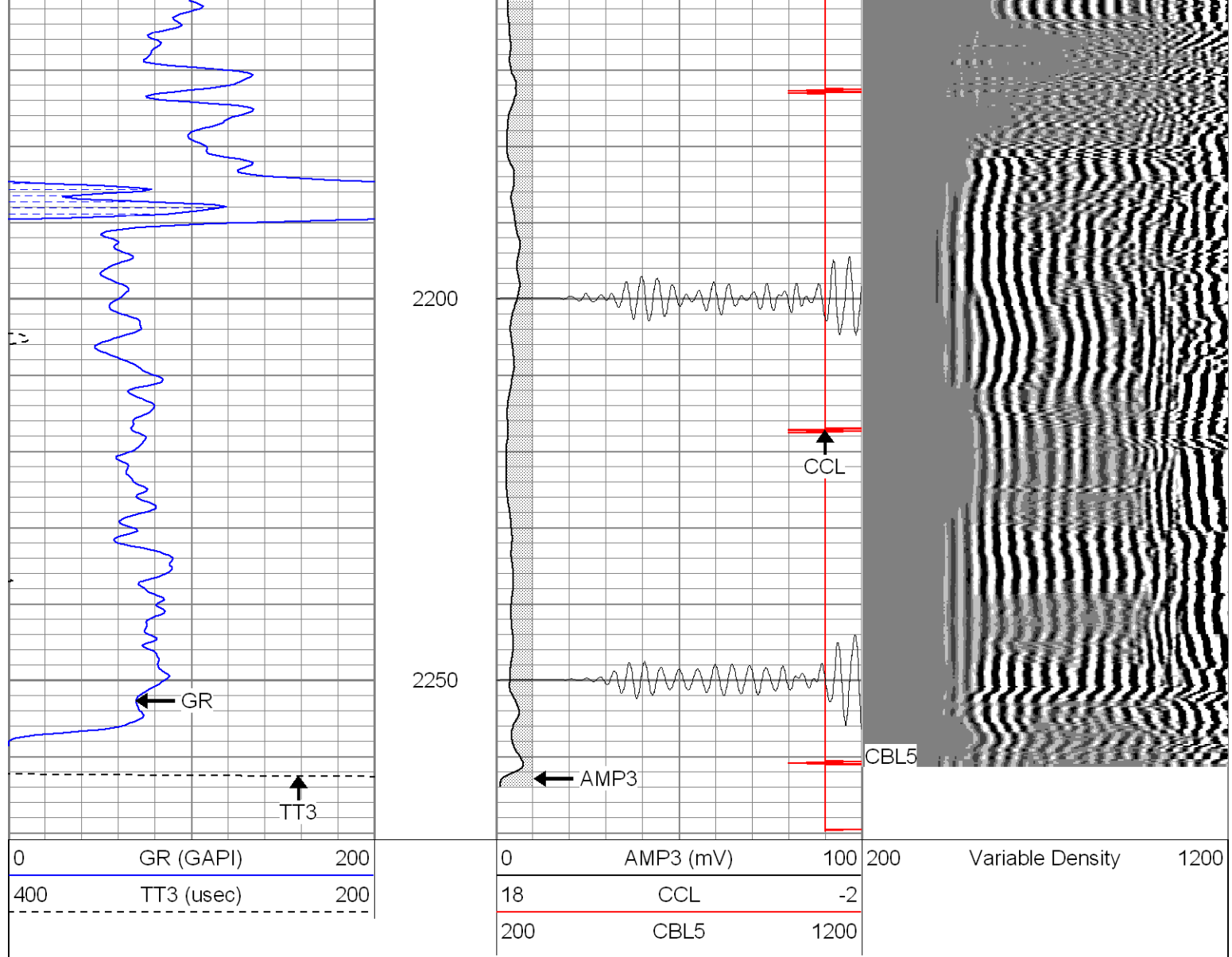
1900





1950

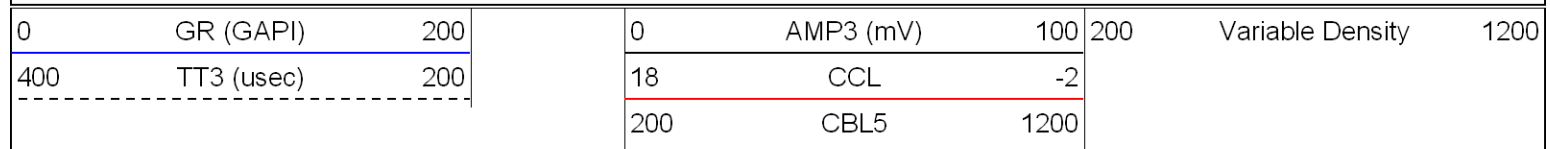


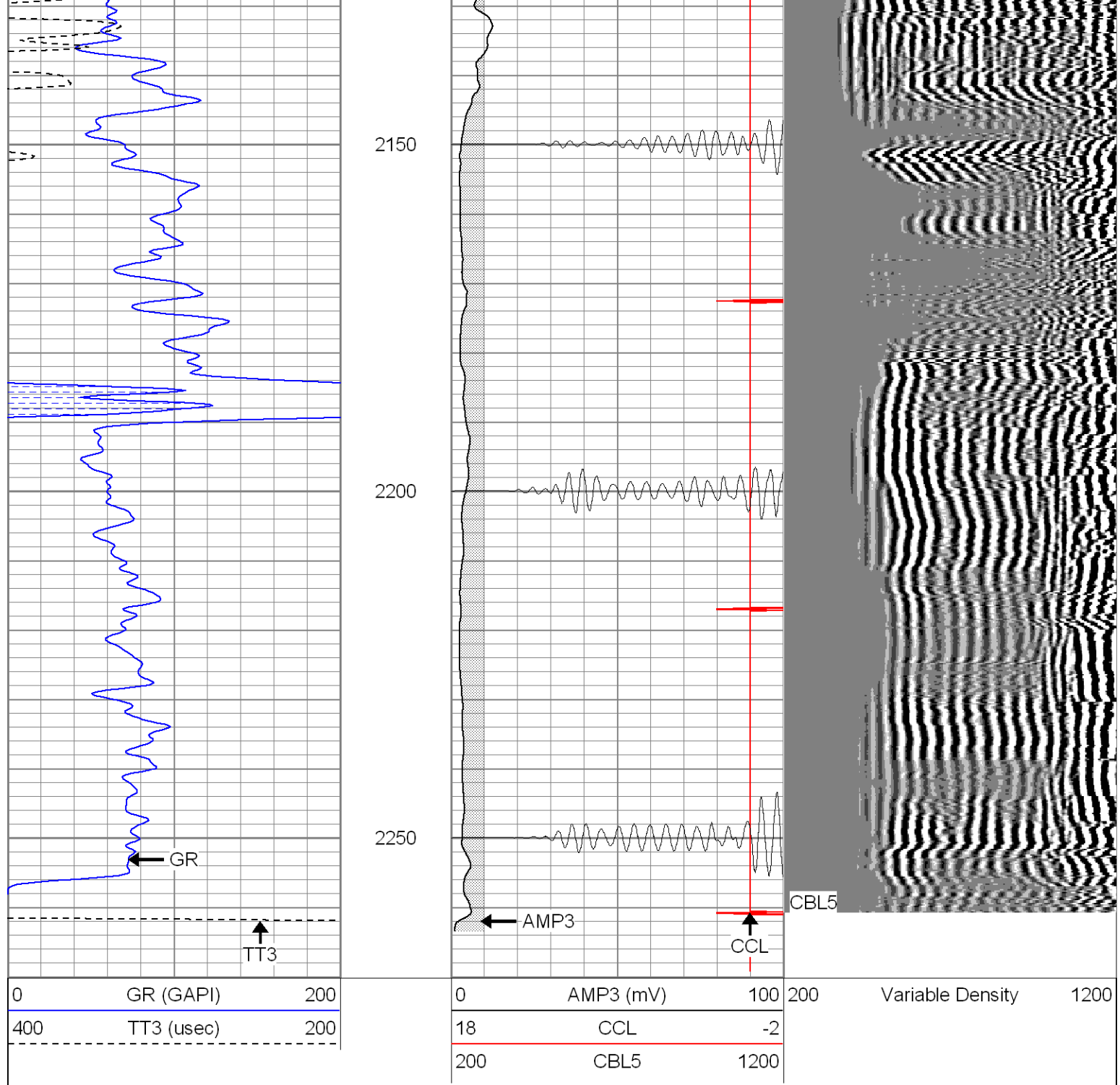


Patterson

Repeat Section

Database File: hr22-16b92206.db
 Dataset Pathname: pass1
 Presentation Format: cblrt
 Dataset Creation: Fri Sep 22 10:14:46 2006 by Log Warrior 7.0 STD Cas
 Charted by: Depth in Feet scaled 1:240





Cement Bond Log Calibration Report

Serial Number: Titan5
 Tool Model: 2
 Performed: Wed Sep 13 11:20:21 2006

Depth: 210.983 ft
 Casing Diameter: 5.5 in

3' Spacing

5' Spacing

Signal Zero:	0	0	mV
Calibrated Amplitude:	85	85	mV
Reading at Signal Zero:	-0.02	0.00866699	V
Reading in Free Pipe:	1.4	1.4	V

Gain:	59.8592	61.0925
Offset:	1.10718	0.520488

Offset: 1.19718 -0.529488

Gamma Ray Calibration Report

Serial Number:	Titan5	
Tool Model:	T2	
Performed:	Thu Aug 17 10:26:00 2006	
Calibrator Value:	1.0	GAPI
Background Reading:	0.0	cps
Calibrator Reading:	1.0	cps
Sensitivity:	1.2000	GAPI/cps