

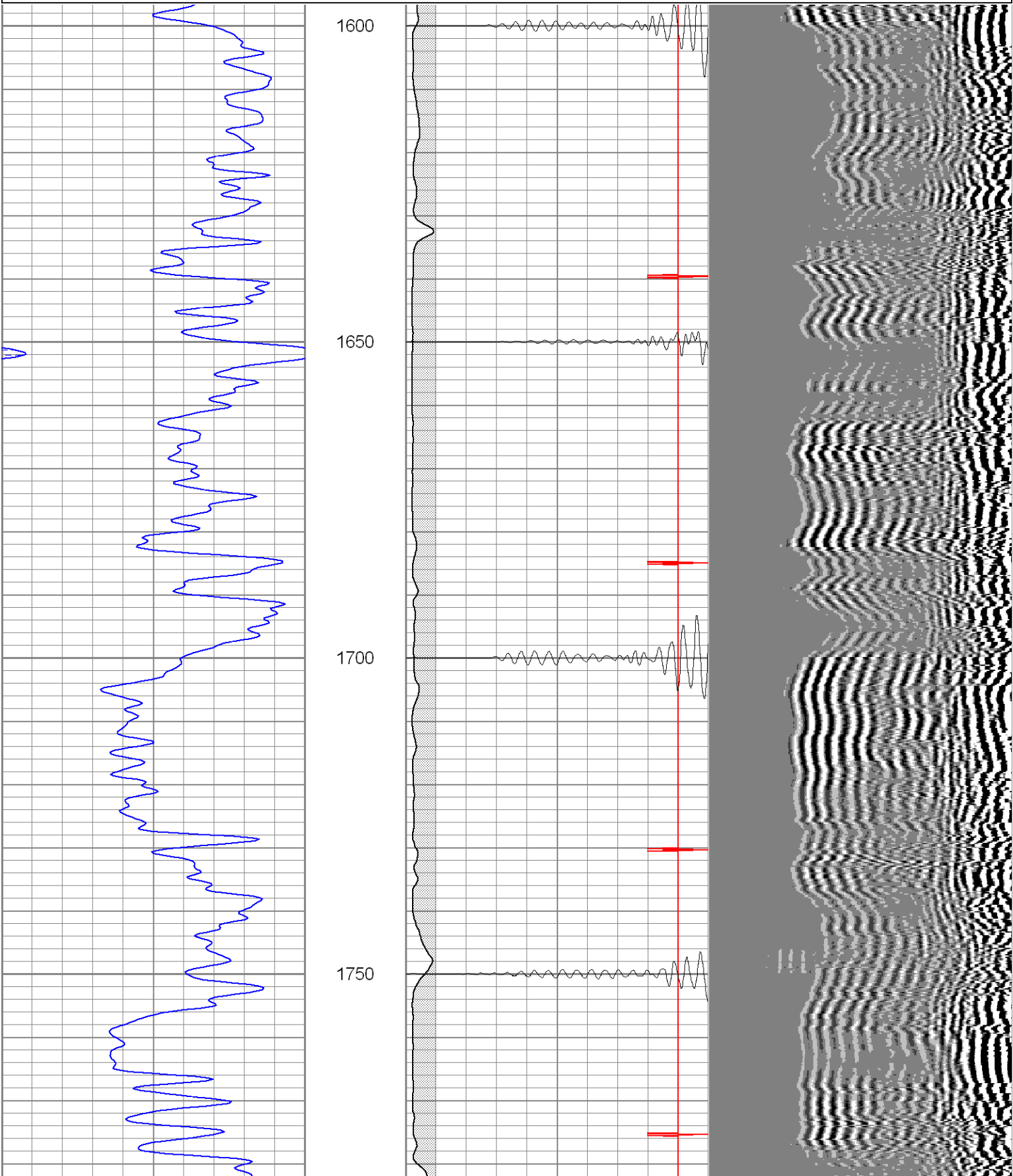
CEMENT BOND GAMMA RAY

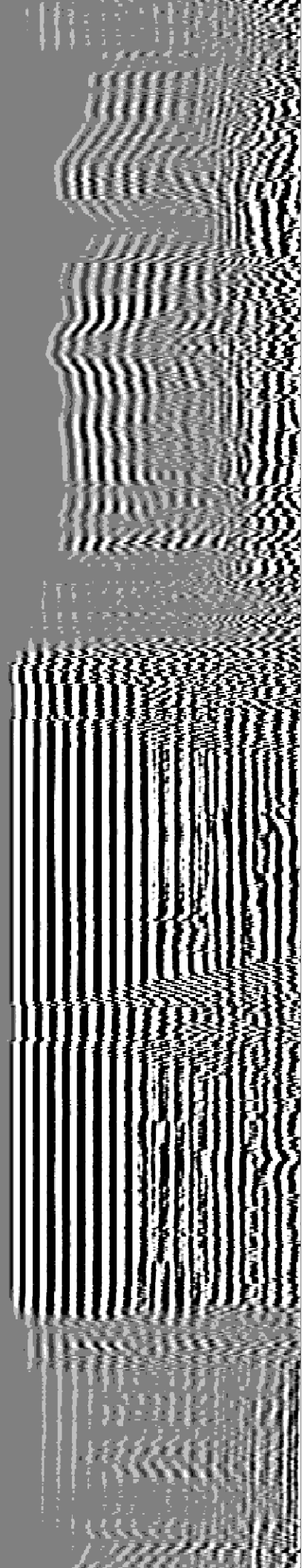
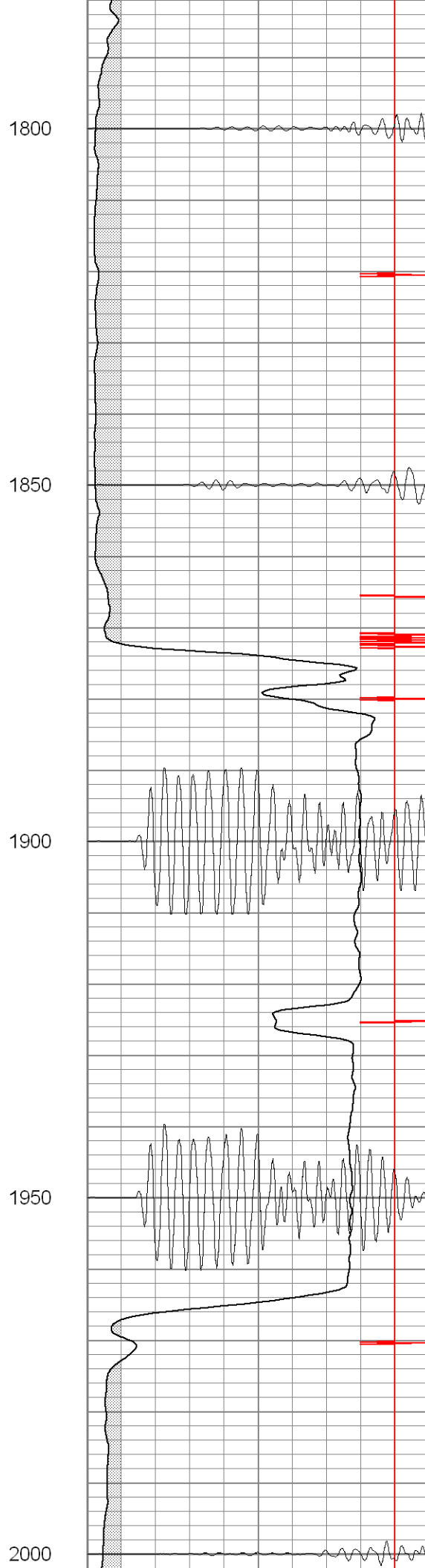
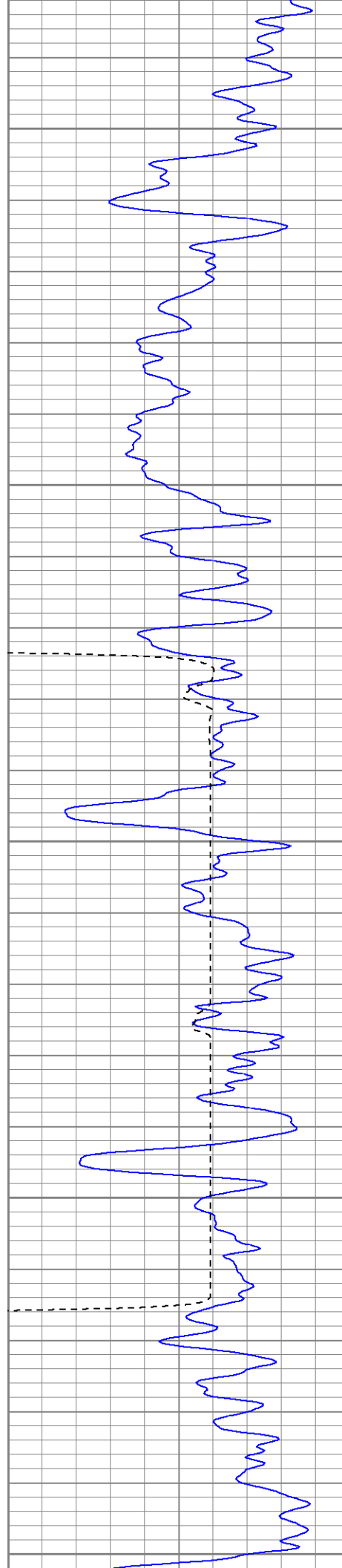
| |
|--|
| <<< Fold Here >>> |
| All interpretations are opinions based on inferences from electrical or other measurements and we cannot and do not guarantee the accuracy or correctness of any interpretation, and we shall not, except in the case of gross or willful negligence on our part, be liable or responsible for any loss, costs, damages, or expenses incurred or sustained by anyone resulting from any interpretation made by any of our officers, agents or employees. These interpretations are also subject to our general terms and conditions set out in our current Price Schedule. |
| Comments |
| Dead Horse, Take Middle Road drive Thru HR 17-02, At Bottom Of Hill Go Left, Drive Thru One Location Take Next Right Up Hill, Dead End On Location. |

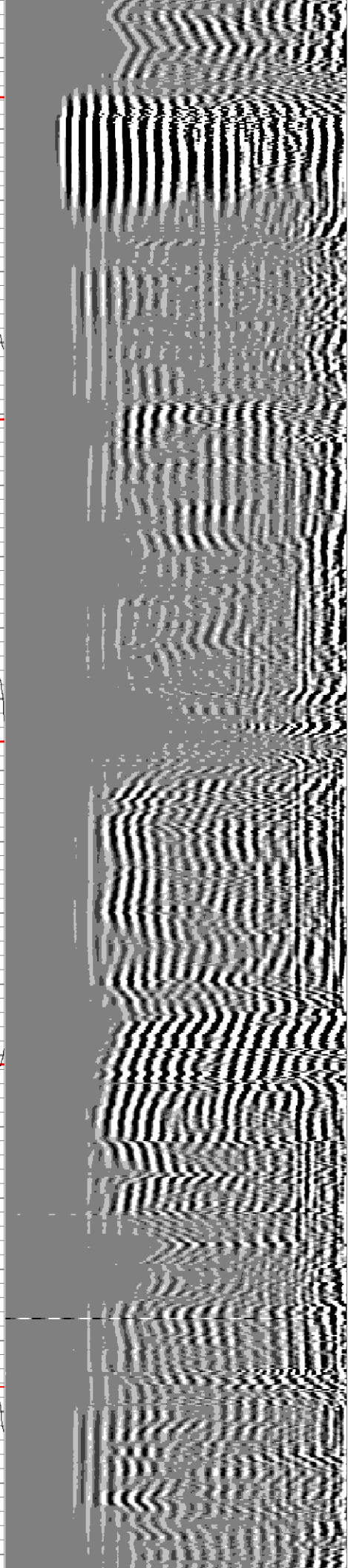
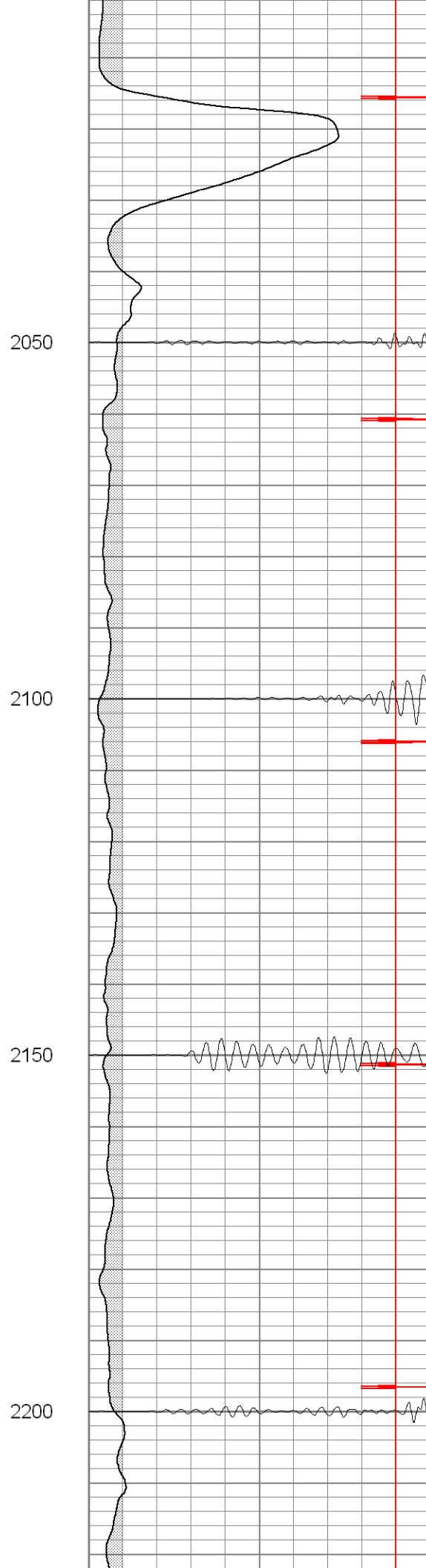
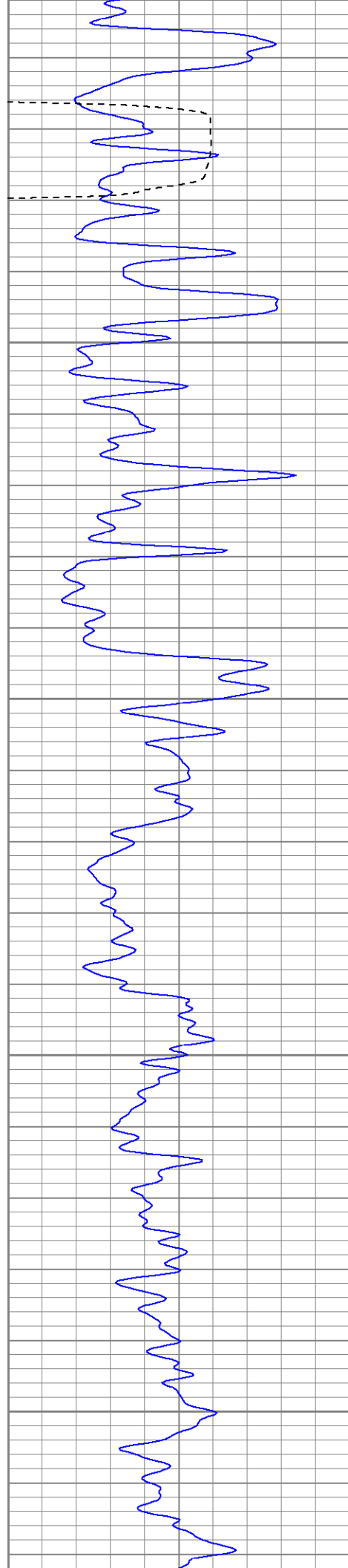
Main Pass

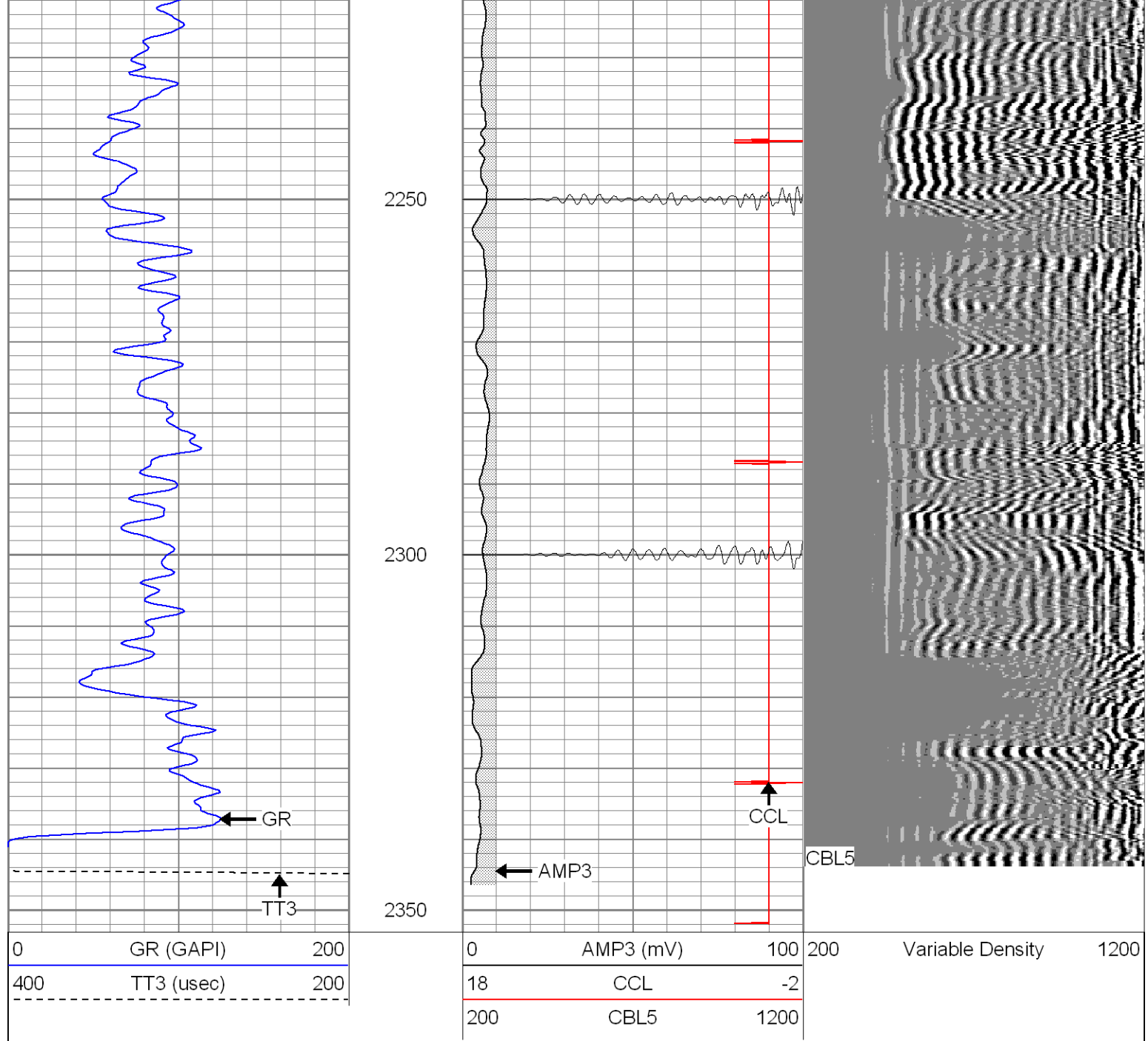
Database File: hr15-11pb120805.db
Dataset Pathname: pass3.1
Presentation Format: cblrt
Dataset Creation: Thu Dec 08 10:20:02 2005 by Calc Warrior 7.0 STD Cas
Charted by: Depth in Feet scaled 1:240

| | | | | | | | | |
|-----|------------|-----|-----|-----------|------|-----|------------------|------|
| 0 | GR (GAPI) | 200 | 0 | AMP3 (mV) | 100 | 200 | Variable Density | 1200 |
| 400 | TT3 (usec) | 200 | 18 | CCL | -2 | | | |
| | | | 200 | CBL5 | 1200 | | | |





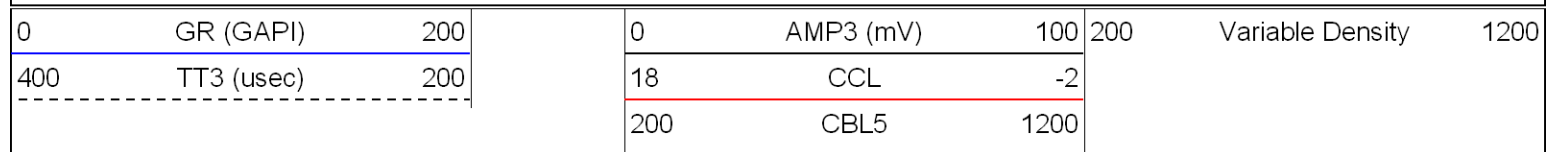


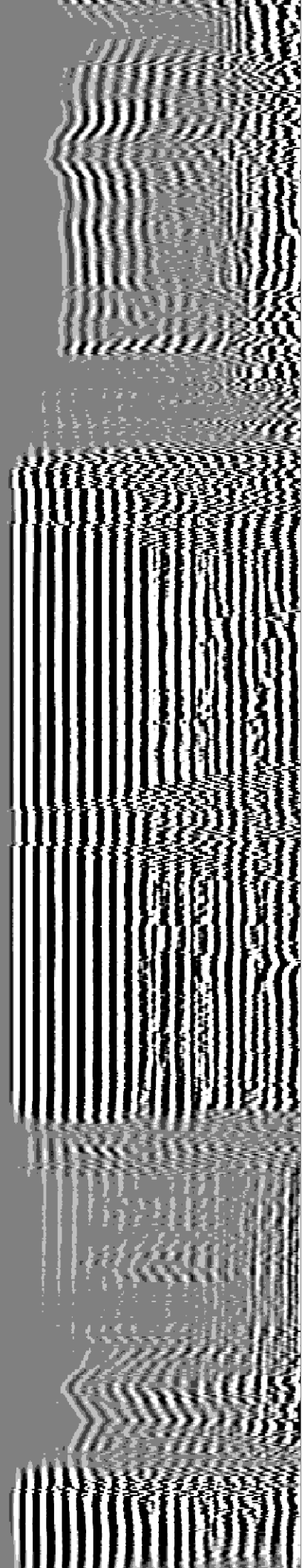
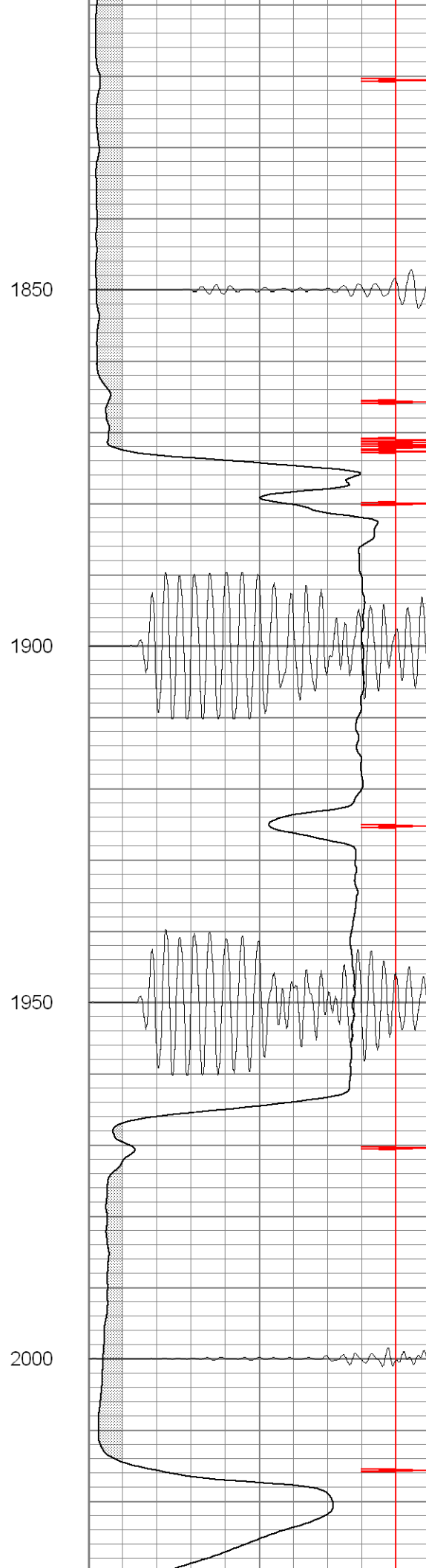
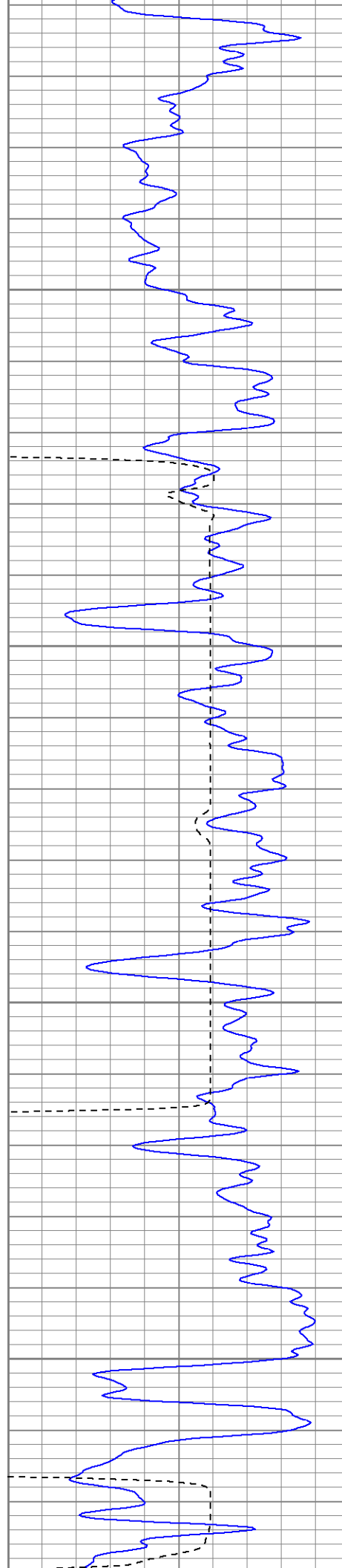


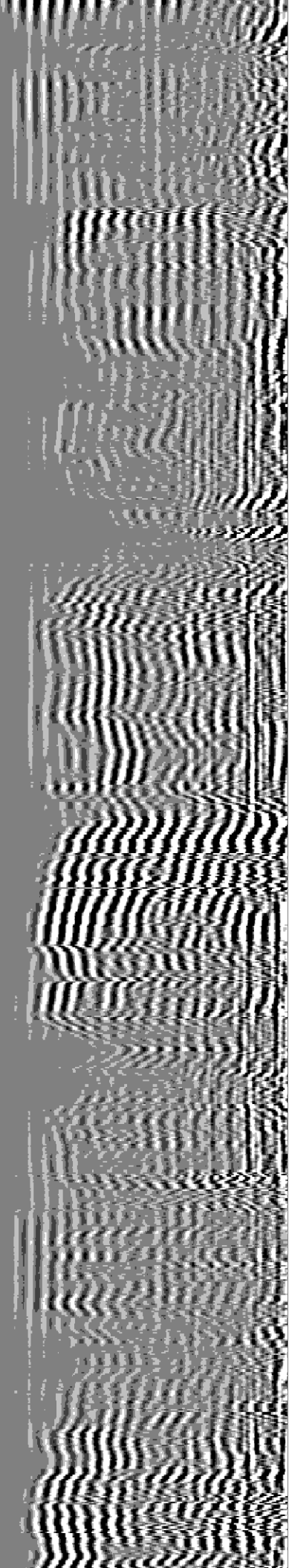
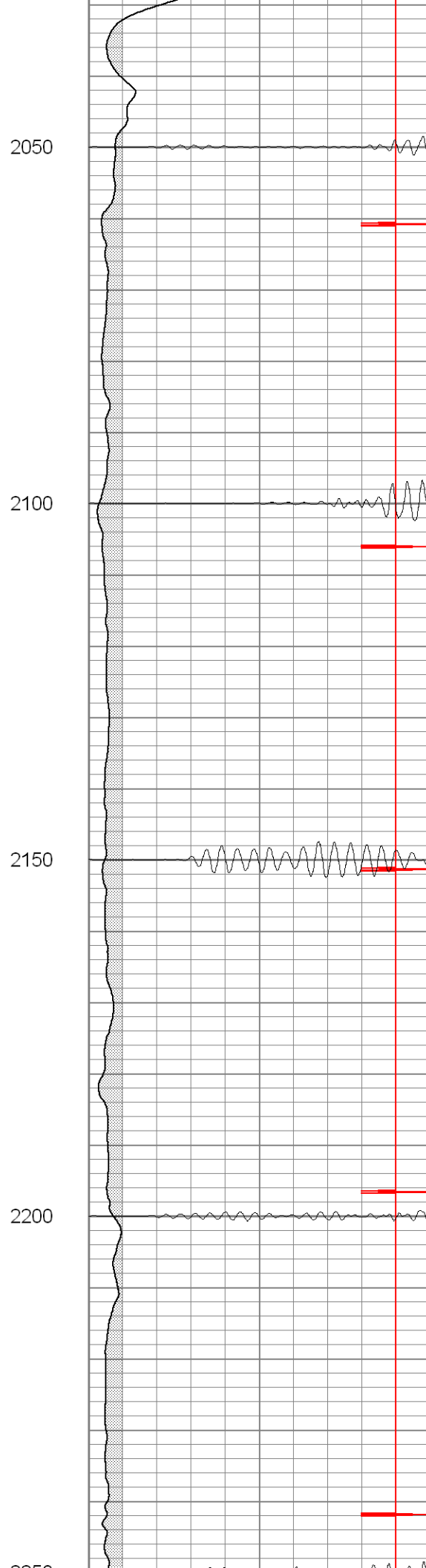
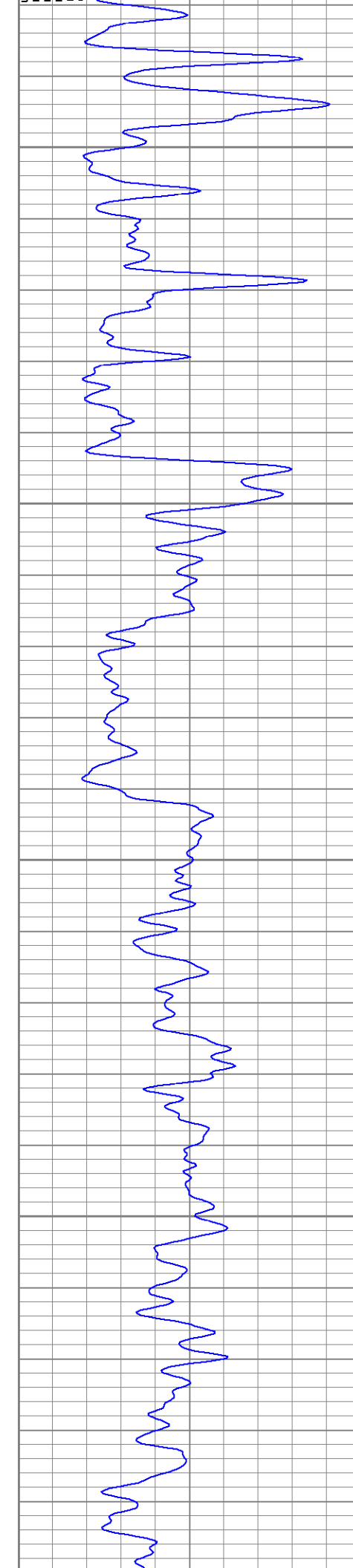
Patterson

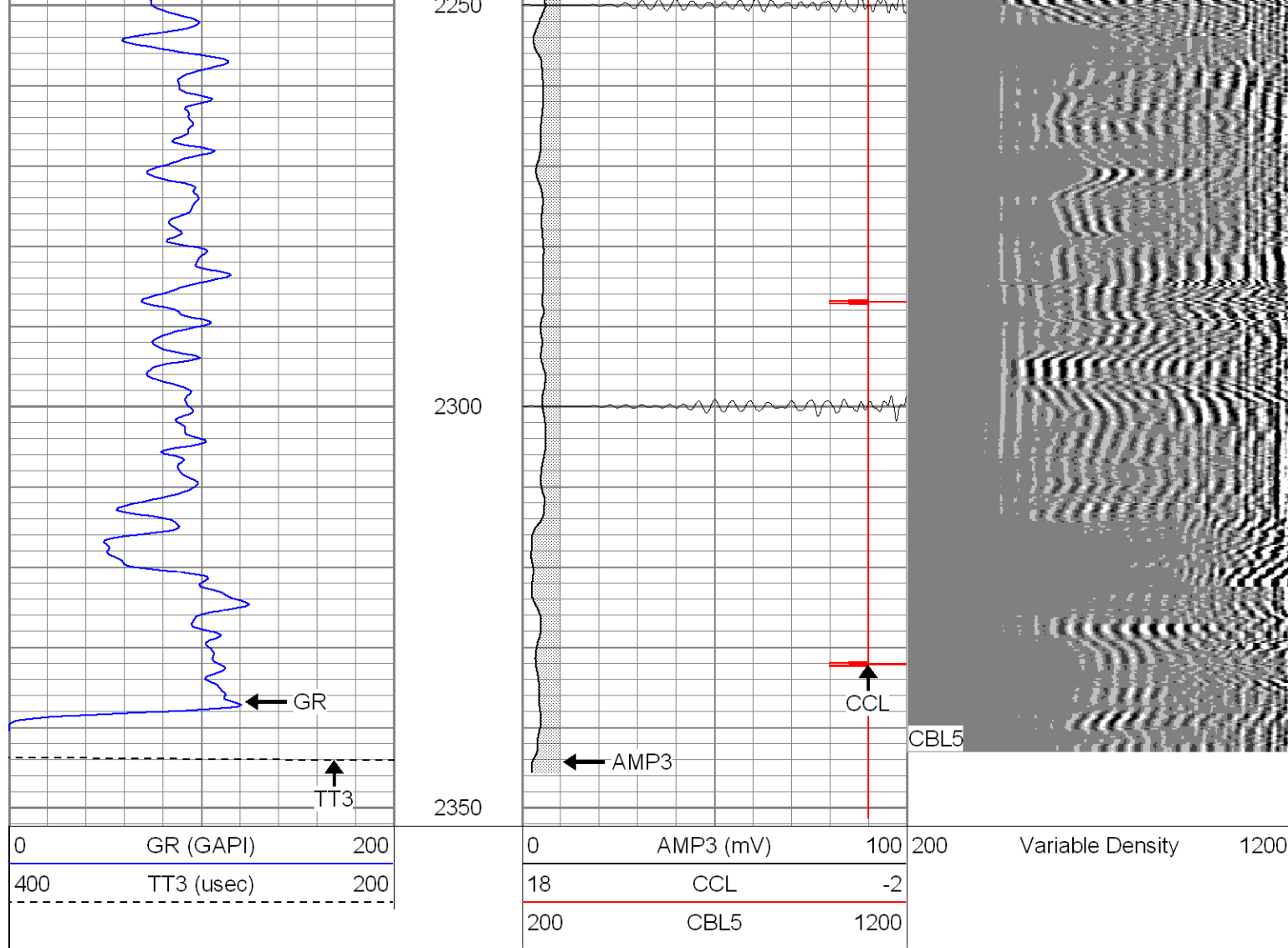
Repeat Section

Database File: hr15-11pb120805.db
 Dataset Pathname: pass2.1
 Presentation Format: cblrt
 Dataset Creation: Thu Dec 08 09:47:14 2005 by Calc Warrior 7.0 STD Cas
 Charted by: Depth in Feet scaled 1:240









Cement Bond Log Calibration Report

| | | | |
|-------------------------|--------------------------|------------|----|
| Serial Number: | Titan5 | | |
| Tool Model: | 2 | | |
| Performed: | Thu Dec 08 09:31:26 2005 | | |
| Depth: | 2158.27 | ft | |
| Casing Diameter: | 5.5 | in | |
| | 3' Spacing | 5' Spacing | |
| Signal Zero: | 0 | 0 | mV |
| Calibrated Amplitude: | 85 | 85 | mV |
| Reading at Signal Zero: | -0.04 | 0 | V |
| Reading in Free Pipe: | 1.3 | 1.24607 | V |
| Gain: | 63.4328 | 68.2145 | |
| Offset: | 2.53731 | 0 | |

Gamma Ray Calibration Report

| | | |
|---------------------|--------------------------|------|
| Serial Number: | Titan5 | |
| Tool Model: | T2 | |
| Performed: | Thu Dec 08 09:28:23 2005 | |
| Calibrator Value: | 1.0 | GAPI |
| Background Reading: | 0.0 | cps |
| Calibrator Reading: | 1.0 | cps |

Sensitivity:

1.3000

GAPI/cps