



SUPERIOR
Black Lick, Pa.
Mercer, Pa.
Wooster, Oh.
Cleveland, Ok.
Trinidad, Co.

CEMENT BOND GAMMA RAY 1000 PSI

Company XTO Energy Inc.
Well Apache Canyon 11-06V
Field Purgatorie River
County Las Animas
State CO

Company XTO Energy Inc.
Well Apache Canyon 11-06V
Field Purgatorie River
County Las Animas
State CO

Location: API #: 05 071 09276 00
1907' FNL & 1786' FWL
SEC 11 TWP 34S RGE 68W
Permanent Datum Ground Level Elevation 8648'
Log Measured From Ground Level
Drilling Measured From Ground Level
Other Services
PRES
CONTROL
Elevation
K.B. -----
D.F. -----
G.L. 8648'

Date	7/12/07	one			
Run Number		2650'			
Depth Driller		2549'			
Depth Logger		2545'			
Bottom Logged Interval		Surf.			
Top Log Interval		7 7/8"			
Open Hole Size		water			
Type Fluid		///			
Density / Viscosity		///			
Max. Recorded Temp.		630'			
Estimated Cement Top		4:14			
Time Well Ready		4:22			
Time Logger on Bottom		0703			
Equipment Number		Trinidad			
Location		Worley			
Recorded By		Mr. Maxwell			
Witnessed By					
Run Number	Bit	From	To	Size	Weight
					From
					To
Casing Record	Size	Wgt/Ft	Top	Bottom	
Surface String	8 5/8"		00	496'	
Prot. String					
Production String	5 1/2"		00	NA	
Liner					

<<< Fold Here >>>

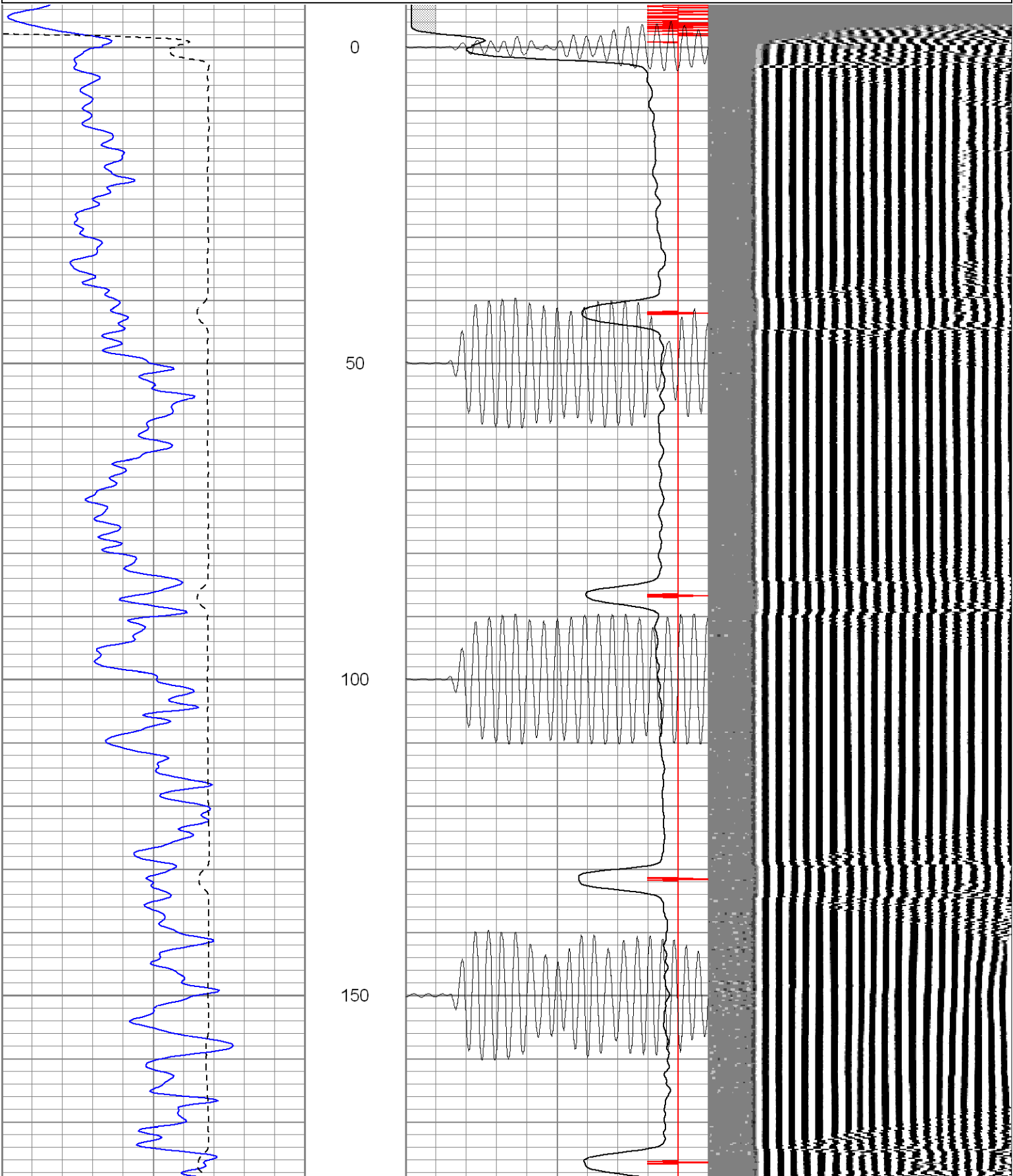
All interpretations are opinions based on inferences from electrical or other measurements and we cannot and do not guarantee the accuracy or correctness of any interpretation, and we shall not, except in the case of gross or willful negligence on our part, be liable or responsible for any loss, costs, damages, or expenses incurred or sustained by anyone resulting from any interpretation made by any of our officers, agents or employees. These interpretations are also subject to our general terms and conditions set out in our current Price Schedule.

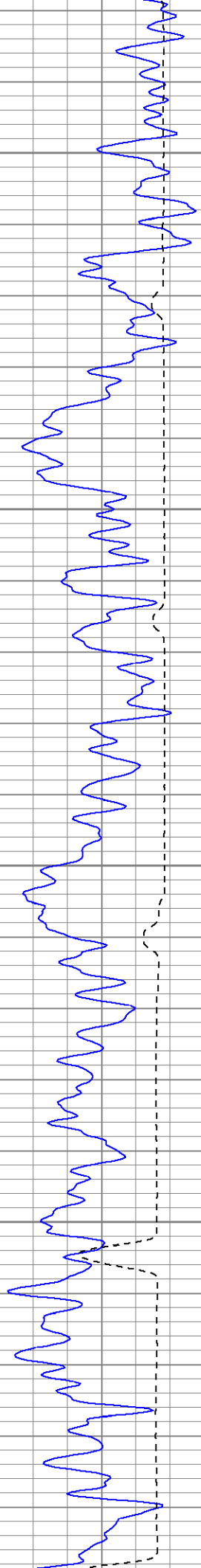
Comments

First Bosque entrance just before Weston, turn right on Torres Canyon, stay on main road to Radio Tower, stay right, second left to location.

Database File: ac11-06vb71207.db
Dataset Pathname: pass2.1
Presentation Format: cblrt
Dataset Creation: Thu Jul 12 17:28:50 2007 by Calc Std Casedhole 07051
Charted by: Depth in Feet scaled 1:240

0	GR (GAPI)	200	0	AMP3 (mV)	100	200	CBL5	1200
400	TT3 (usec)	200	18	CCL	-2			
			200	CBL5	1200			



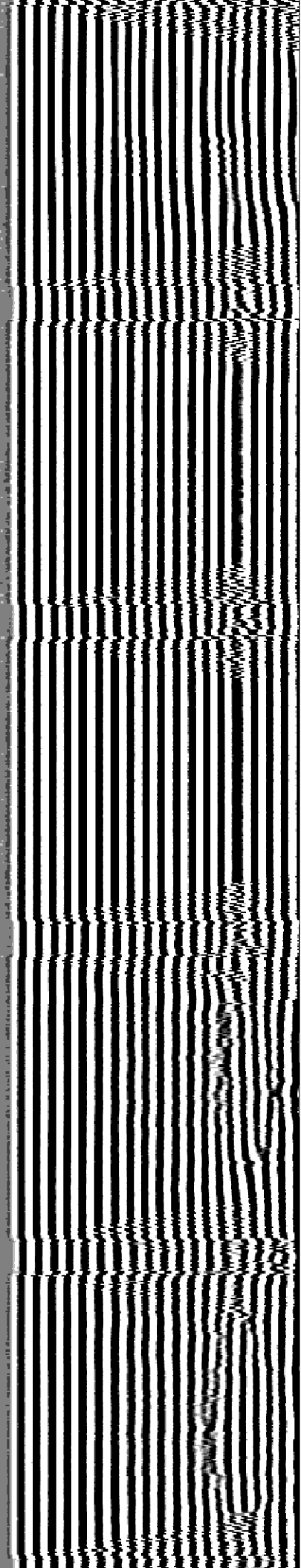
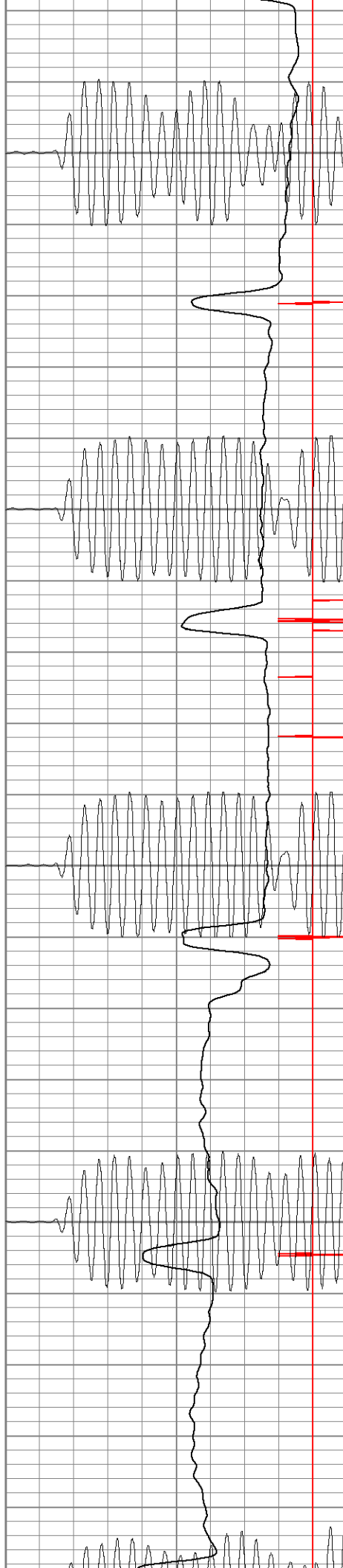


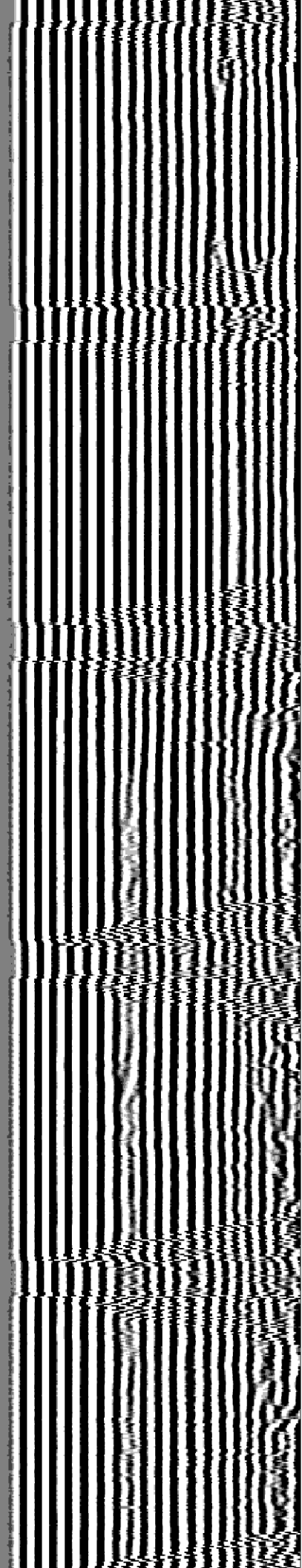
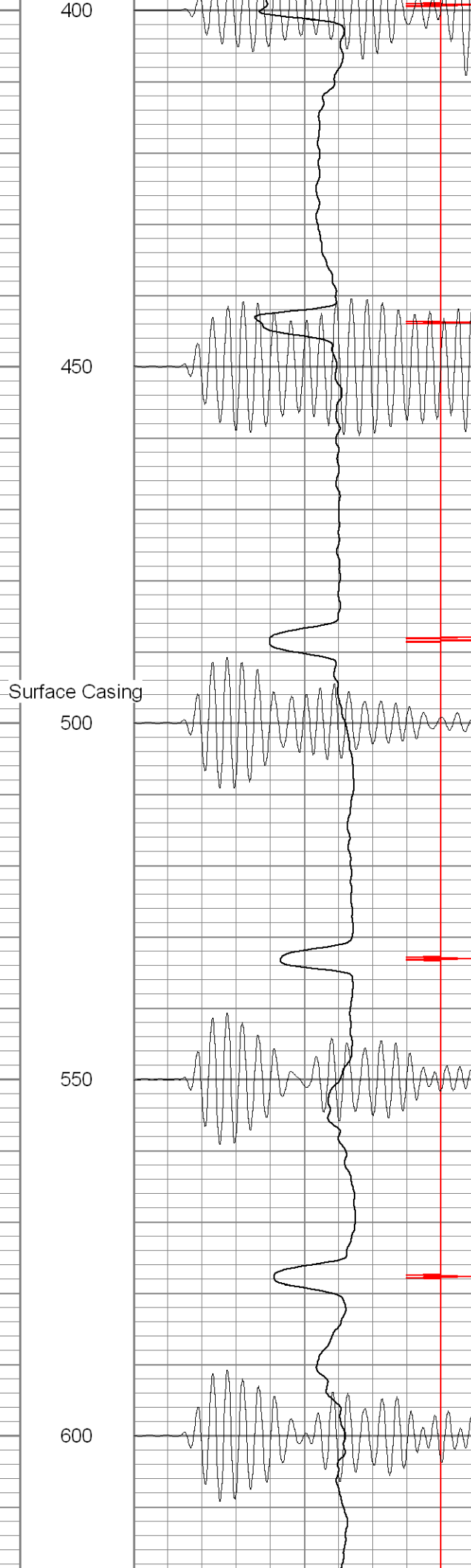
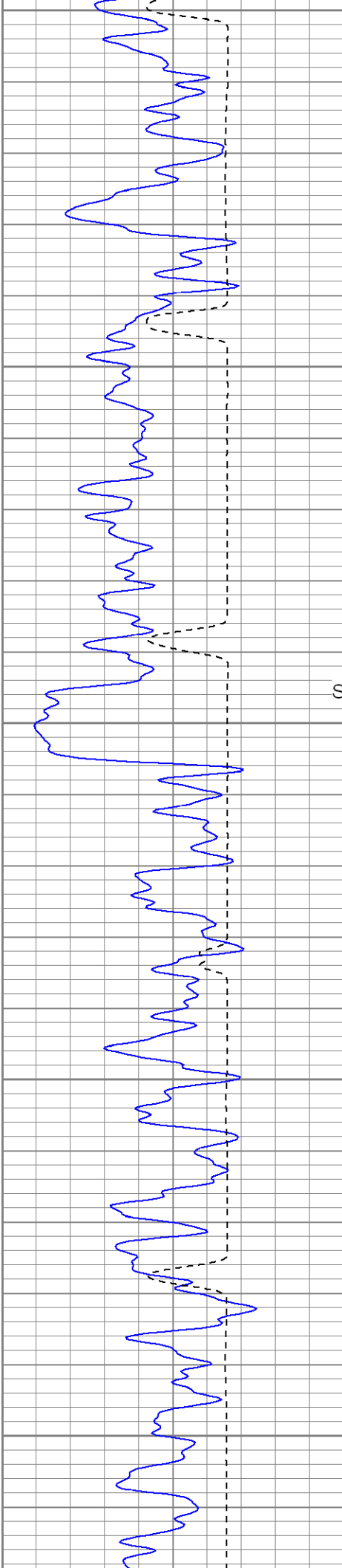
200

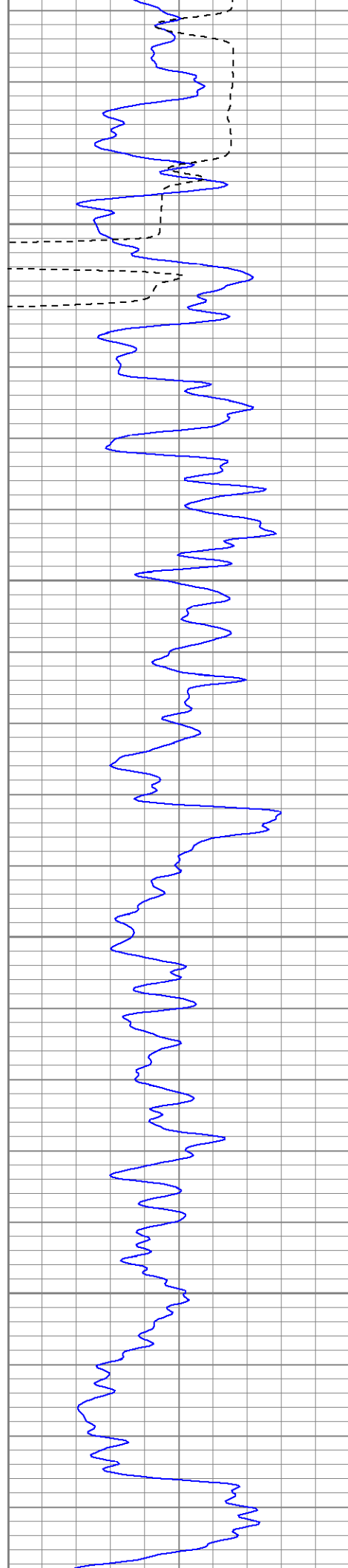
250

300

350







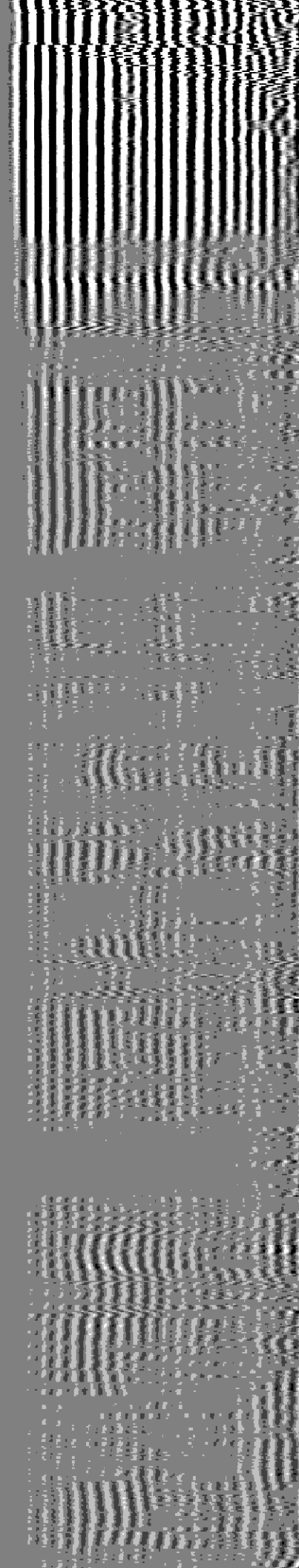
Estimated Top Of Cement

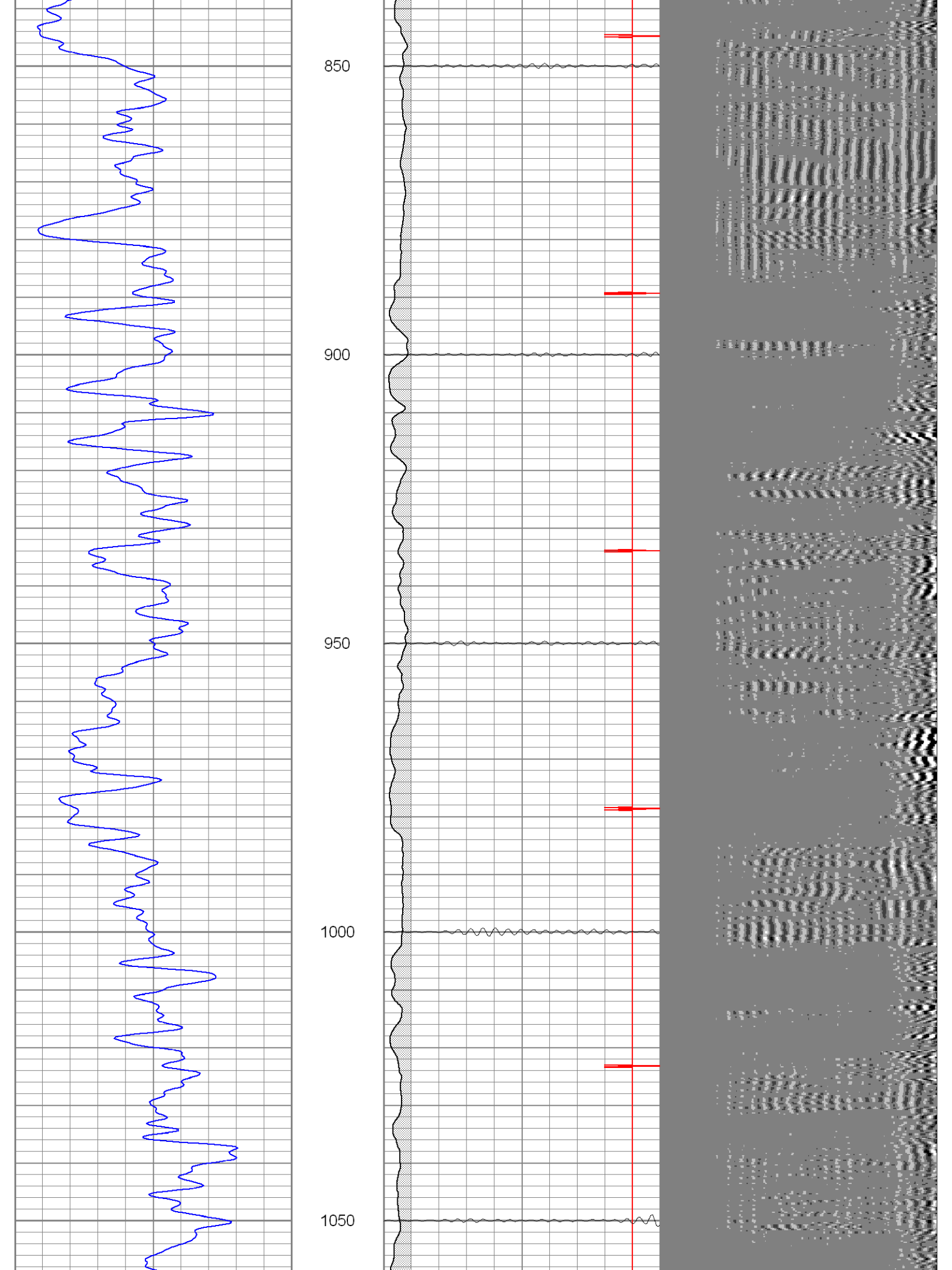
650

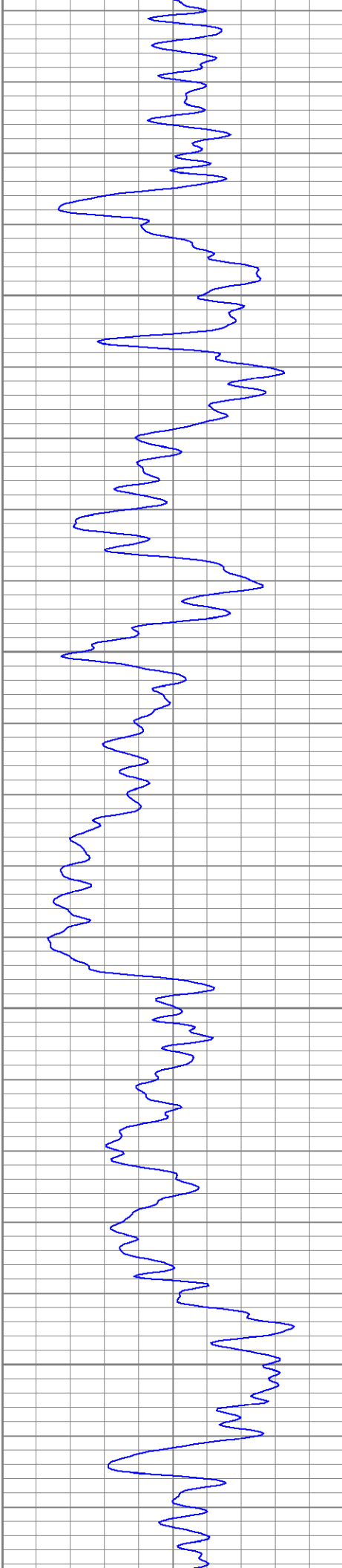
700

750

800





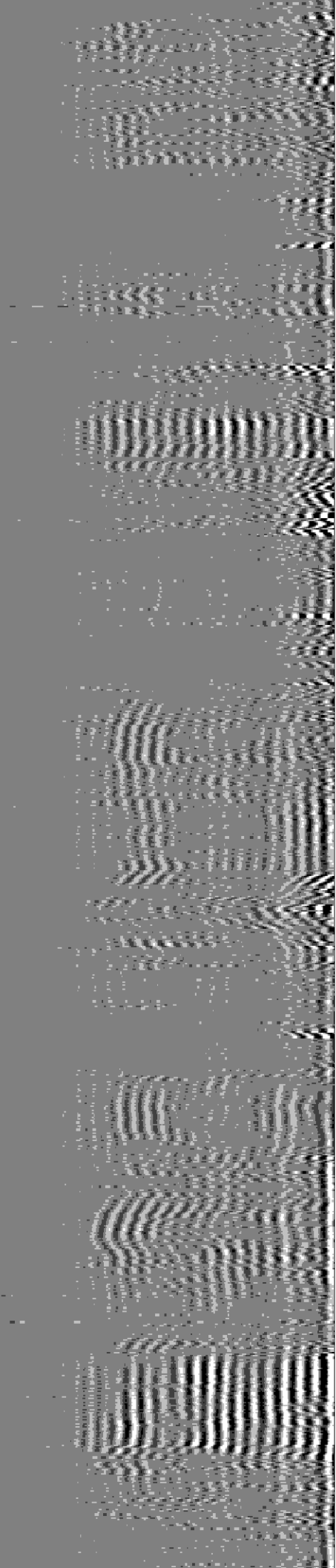


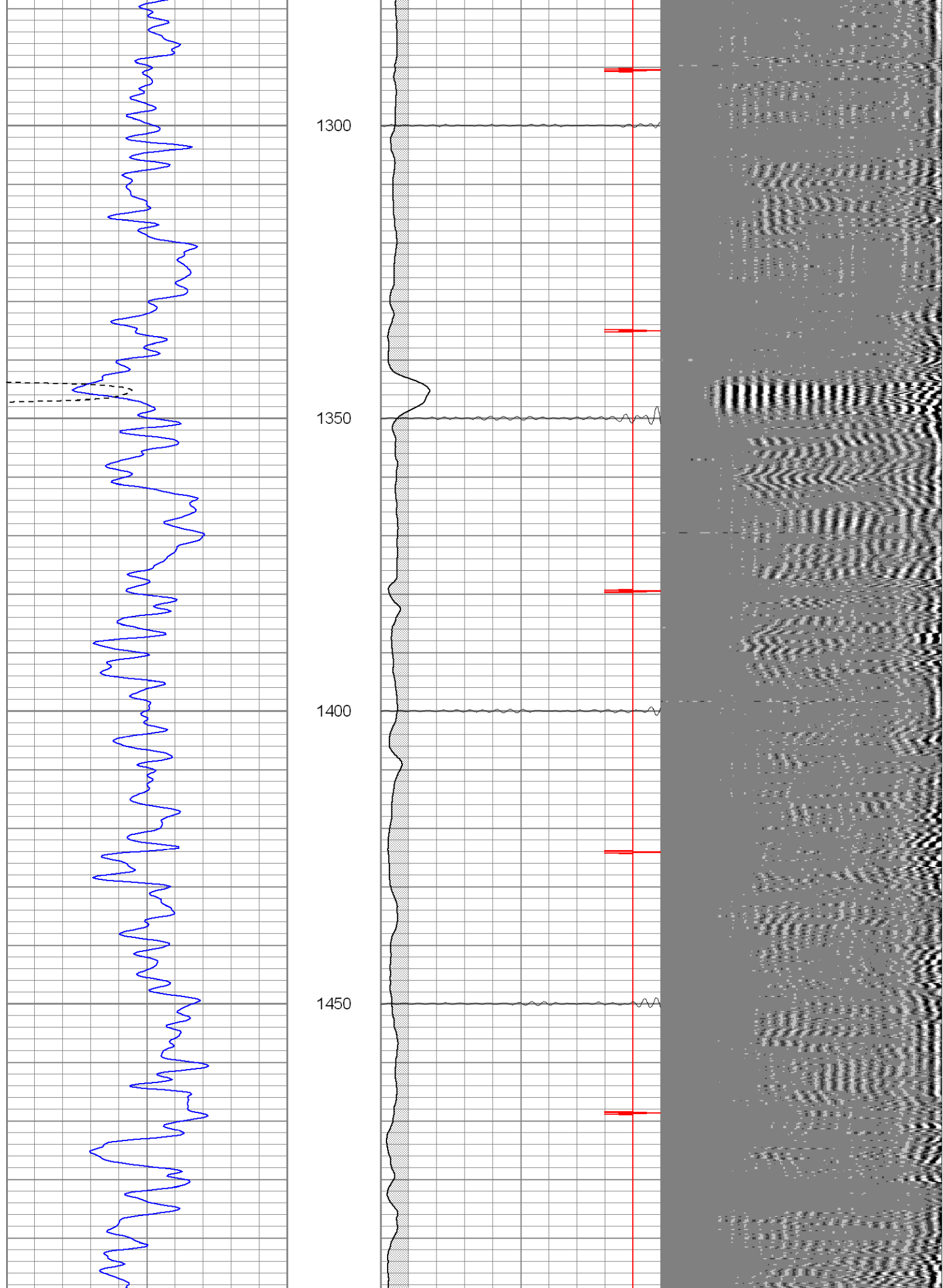
1100

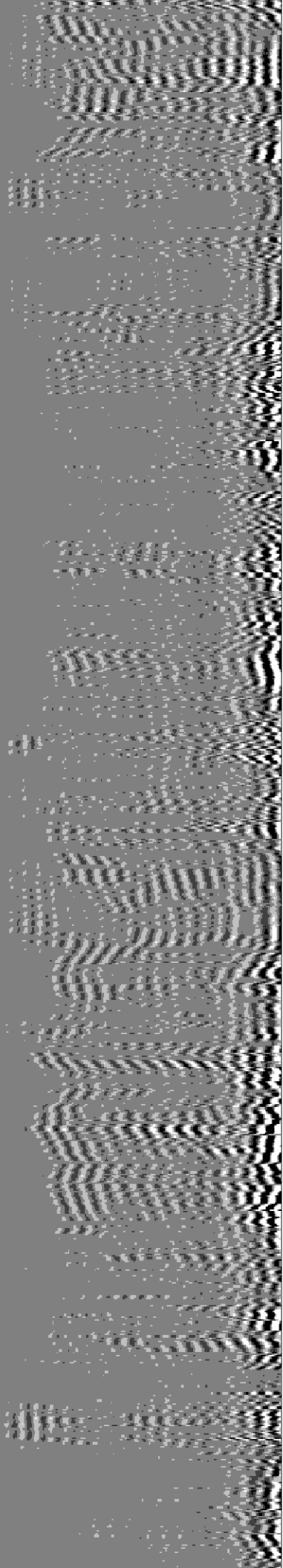
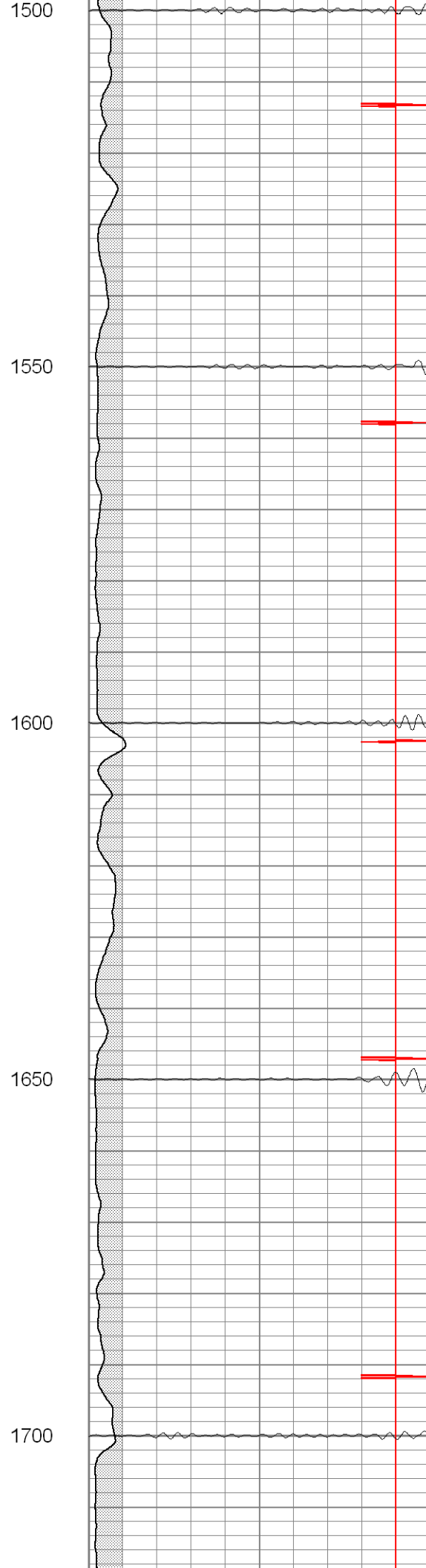
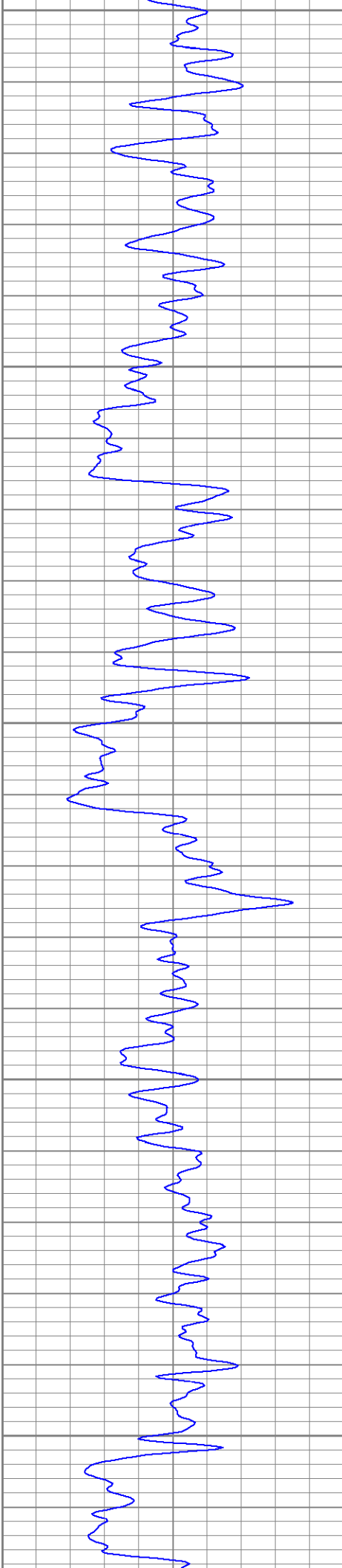
1150

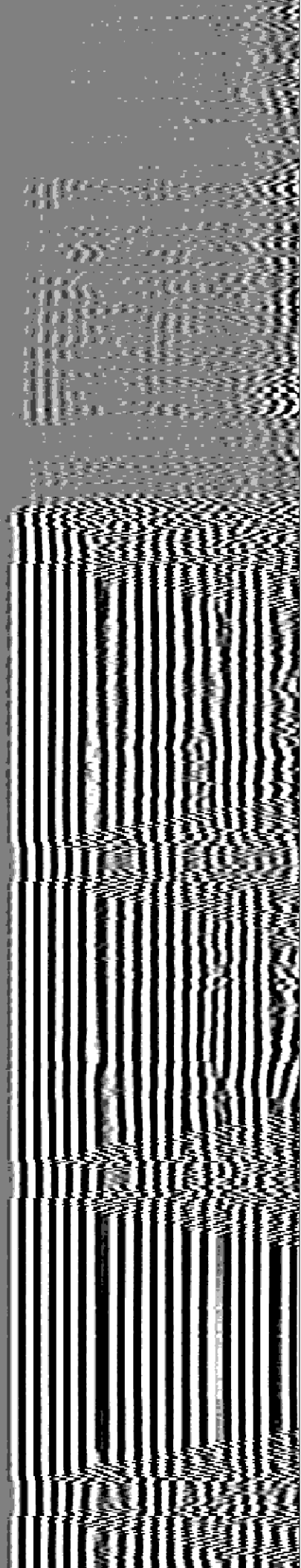
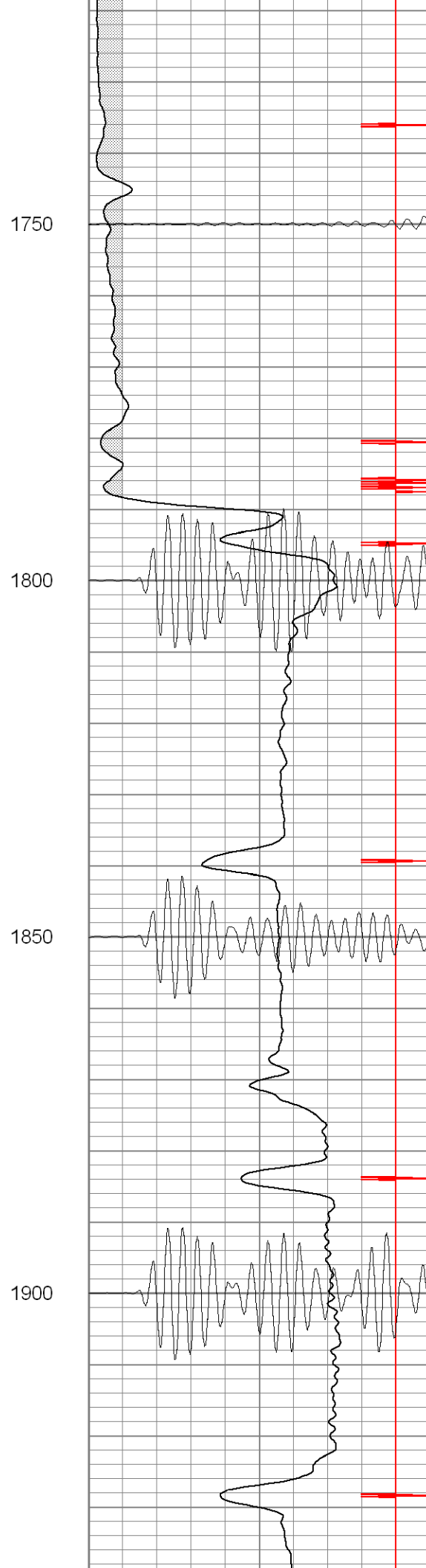
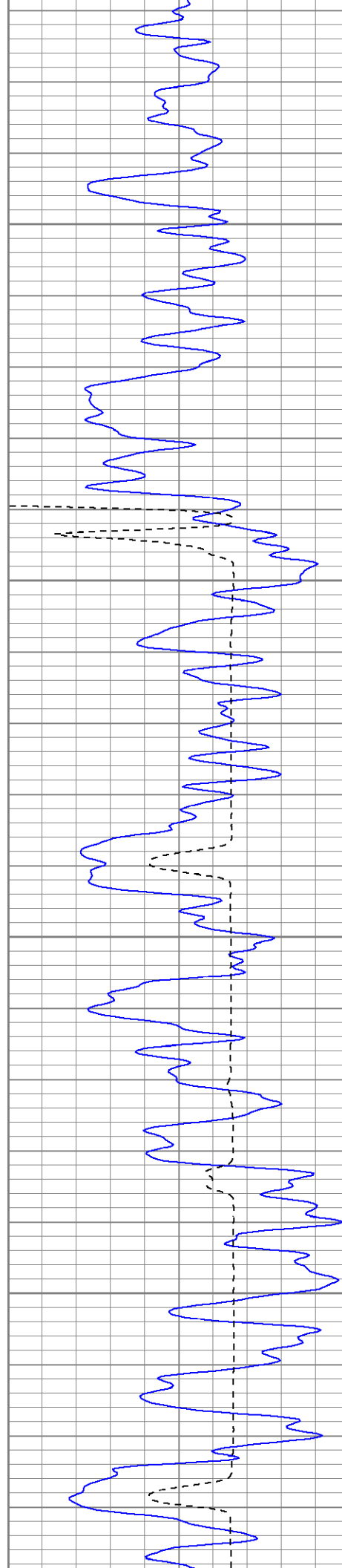
1200

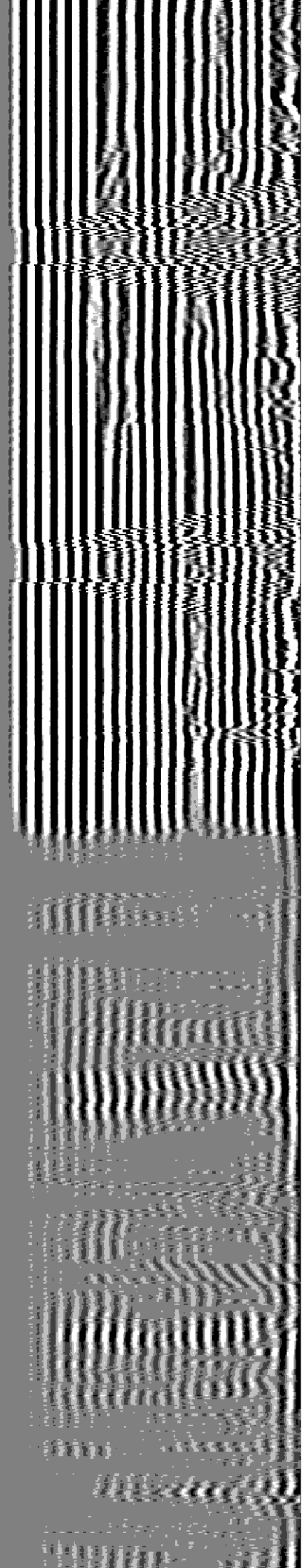
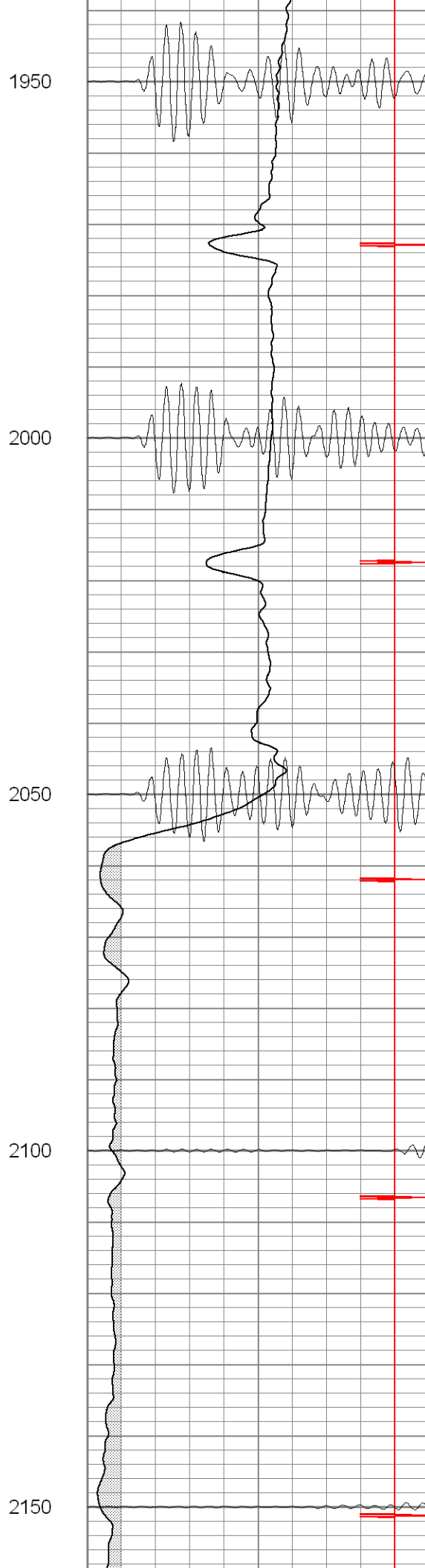
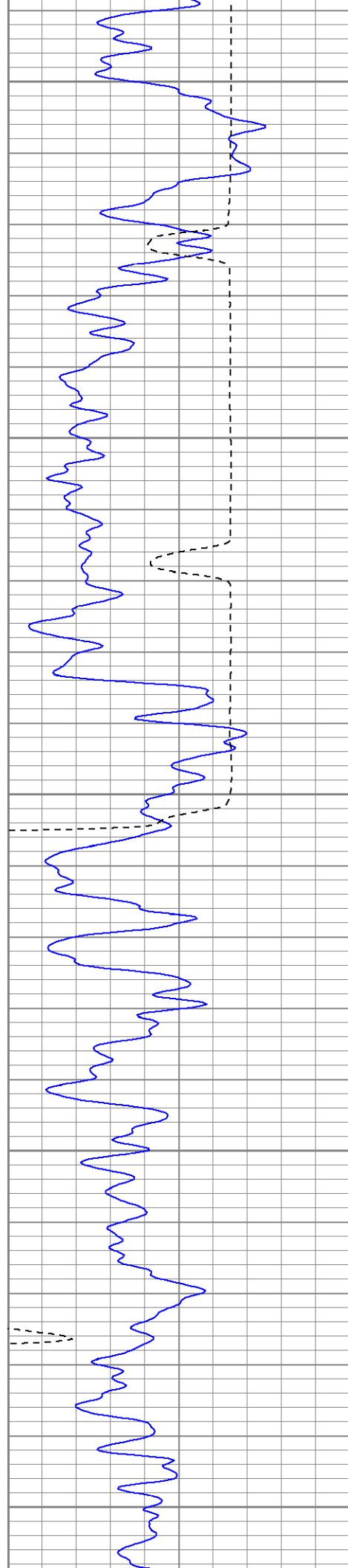
1250

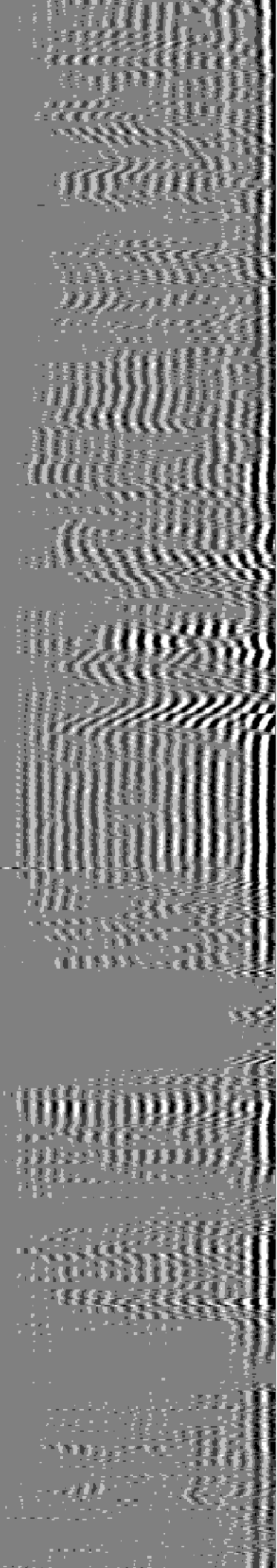
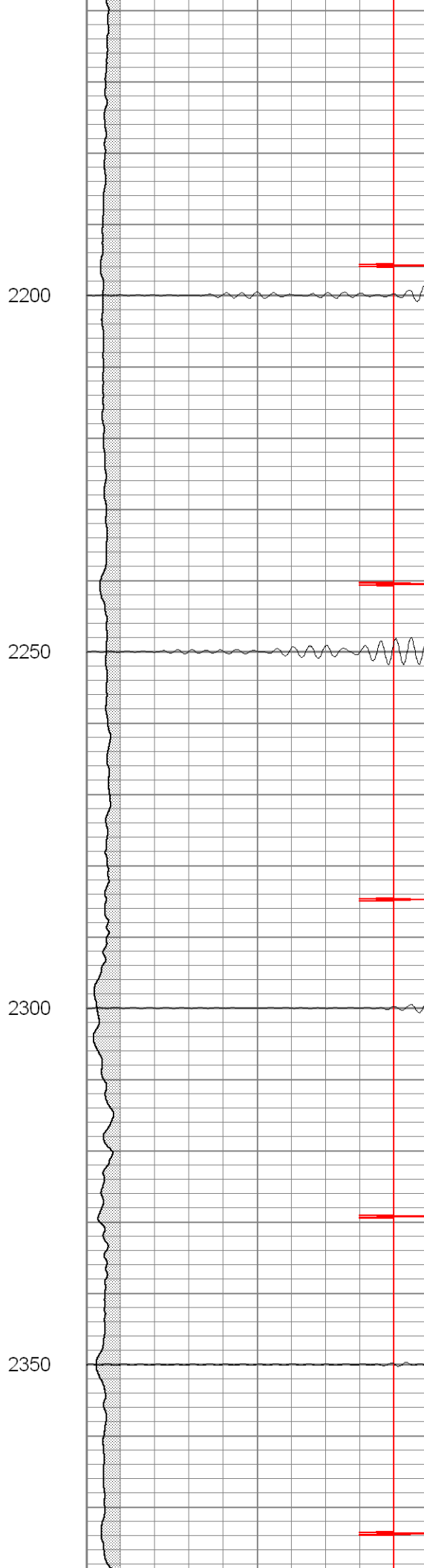
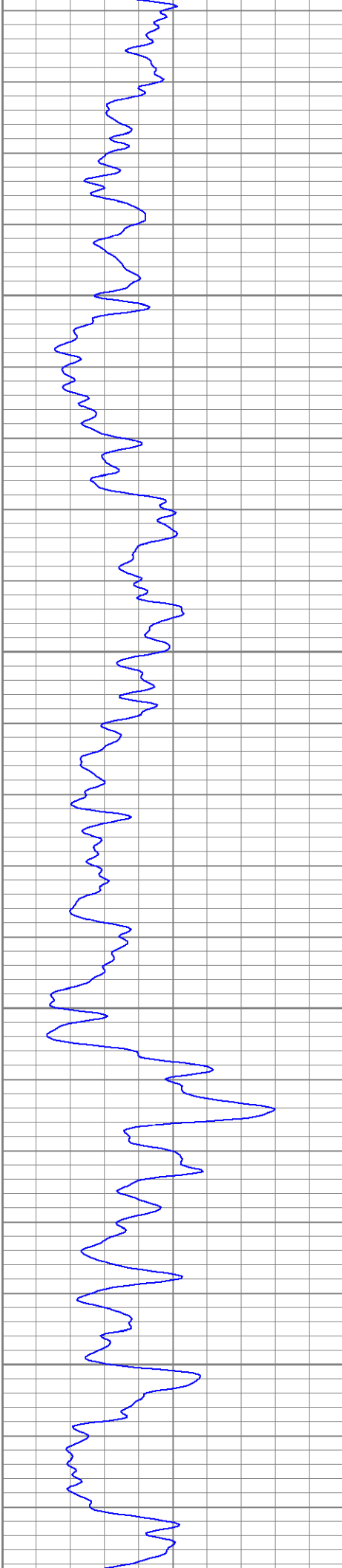


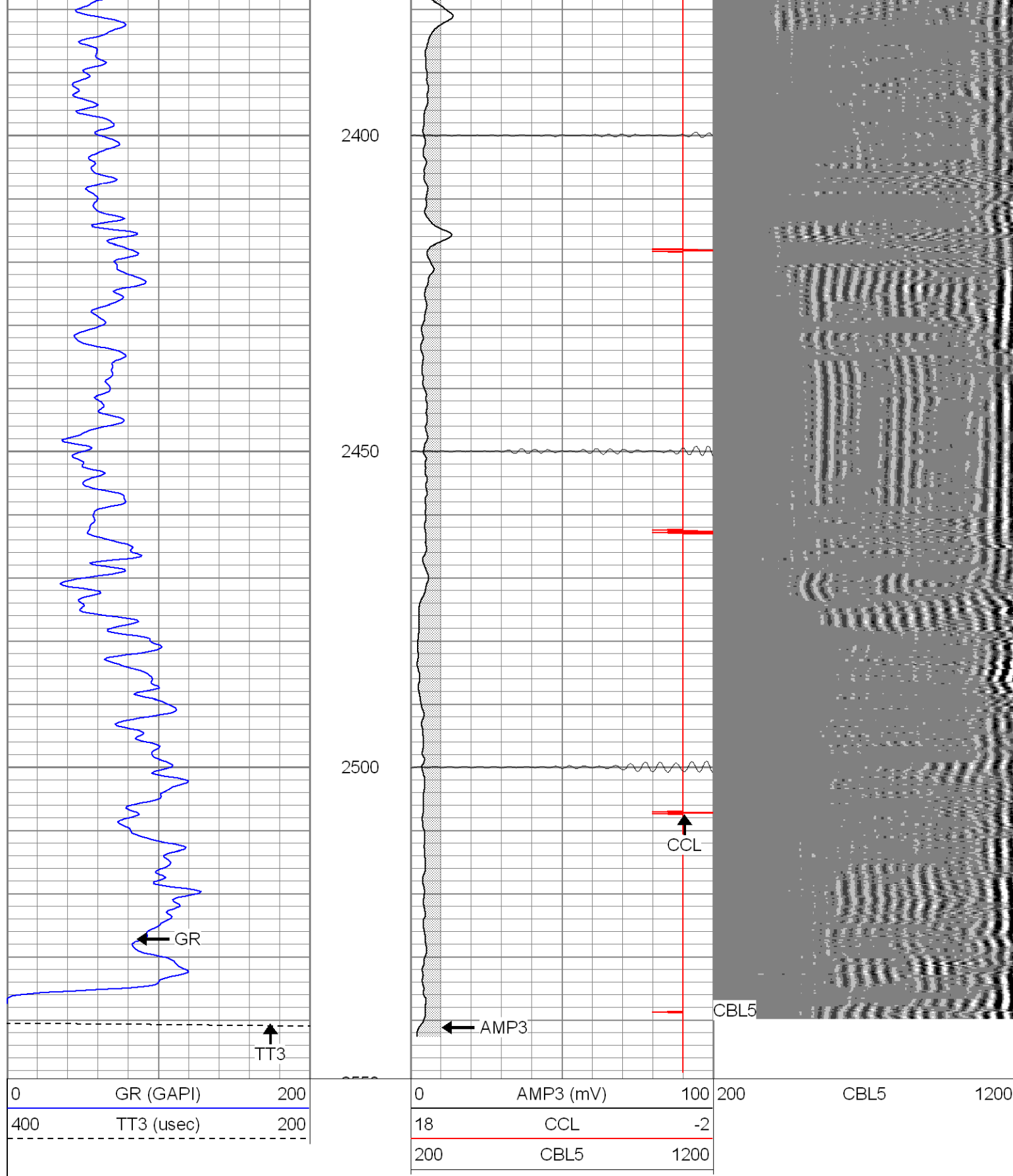










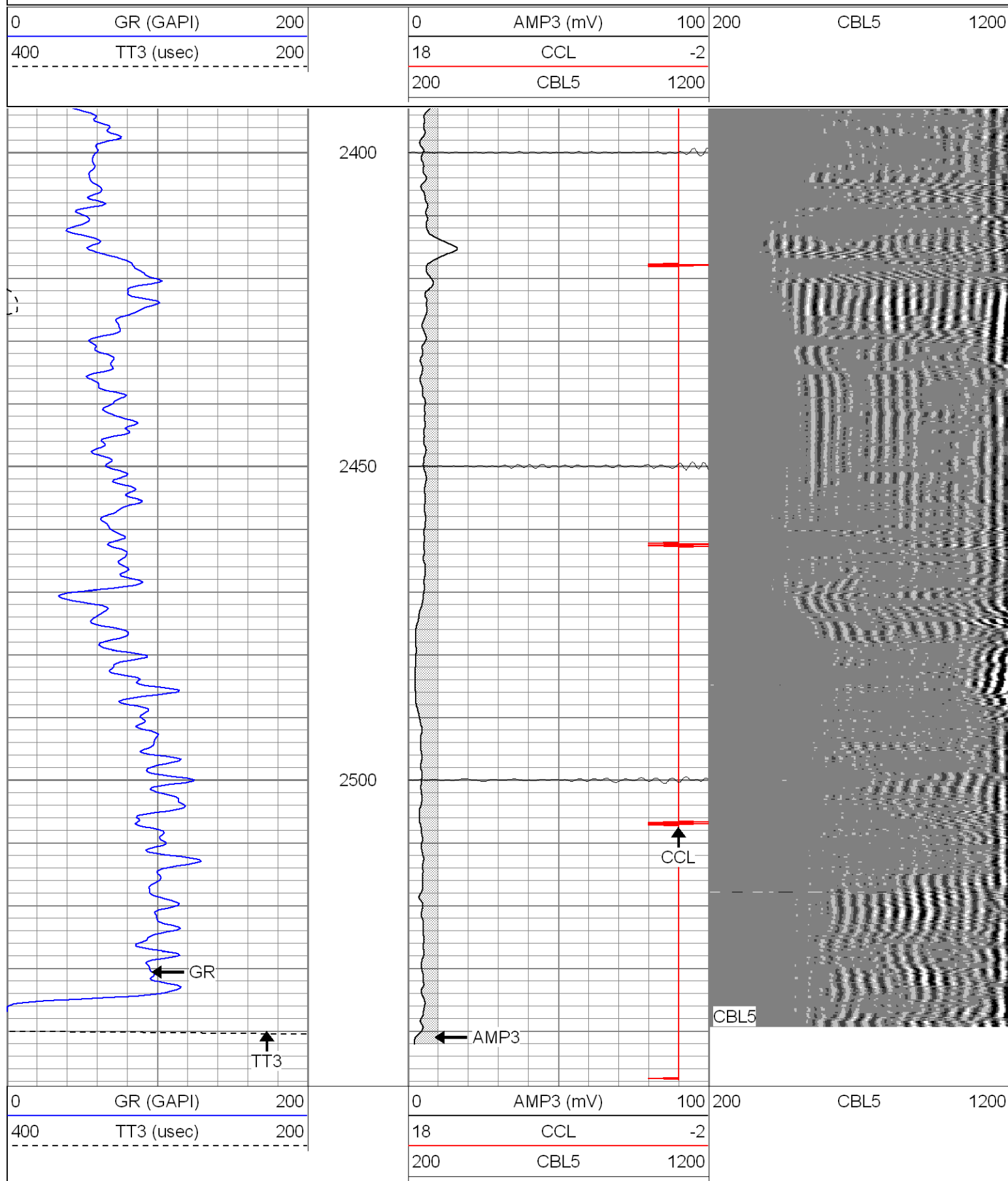


SUPERIOR

Black Lick, Pa.
Mercer, Pa.
Wooster, Oh.
Cleveland, Ok.
Trinidad, Co.

Repeat Section 0 PSI

Database File: ac11-06vb71207.db
Dataset Pathname: pass1.1



Calibration Report

Database File: ac11-06vb71207.db
Dataset Pathname: pass1.1
Dataset Creation: Thu Jul 12 17:30:57 2007 by Calc Std Casedhole 07051

Cement Bond Log Calibration Report

Serial Number:	Titan2		
Tool Model:	T2		
Performed:	Thu Jul 12 08:49:58 2007		
Depth:	0	ft	
Casing Diameter:	0	in	
	3' Spacing	5' Spacing	
Signal Zero:	0	0	mV
Calibrated Amplitude:	85	85	mV
Reading at Signal Zero:	-0.04	0	V
Reading in Free Pipe:	1.48	1.6	V
Gain:	55.9211	53.125	
Offset:	2.23684	0	

Gamma Ray Calibration Report

Serial Number:	TITAN2	
Tool Model:	T2	
Performed:	Tue Jul 03 10:53:05 2007	
Calibrator Value:	1.0	GAPI
Background Reading:	0.0	cps
Calibrator Reading:	1.0	cps
Sensitivity:	1.5000	GAPI/cps