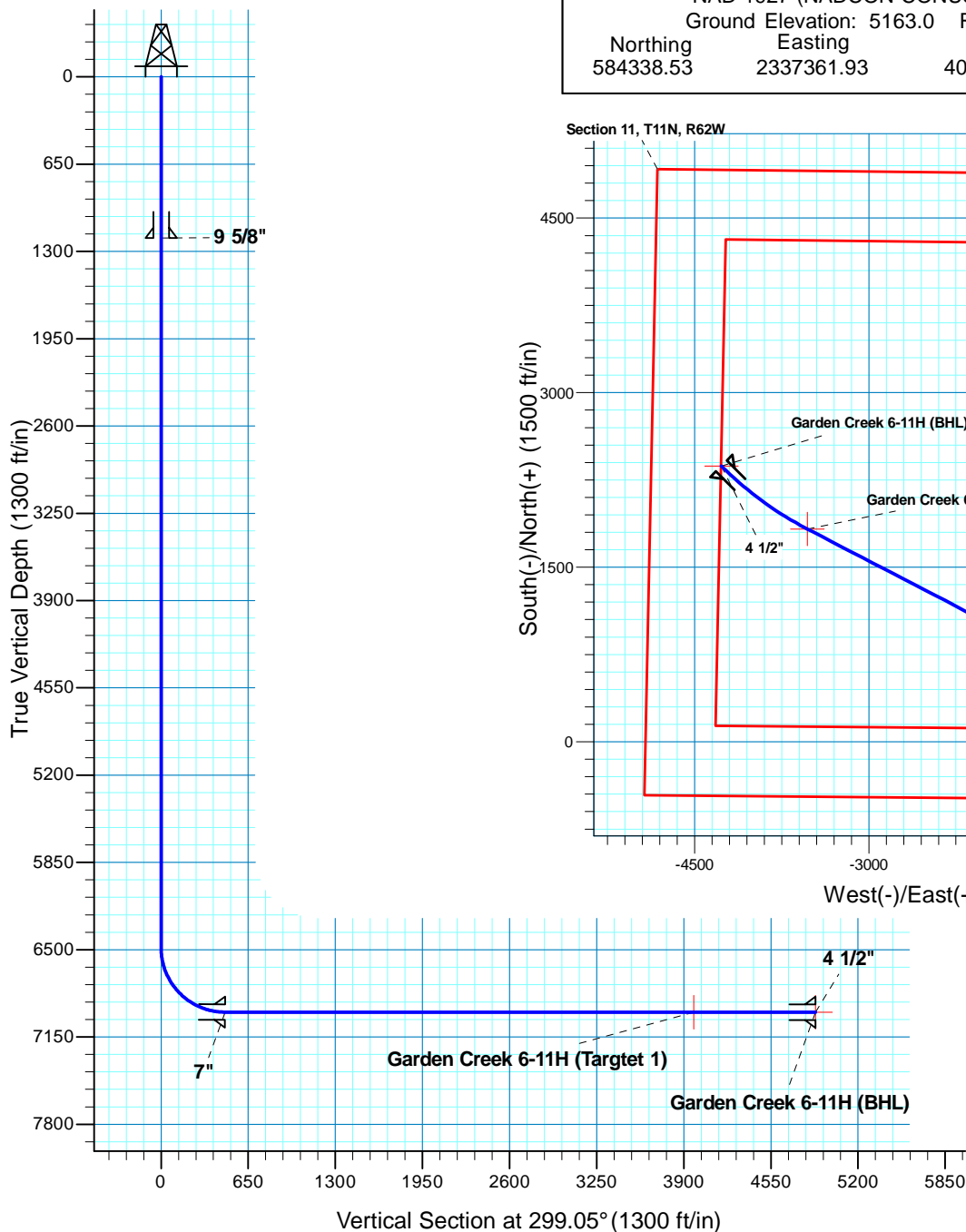


# Garden Creek 6-11H

Section 11 T11N R62W  
Weld County, CO



Surface Location			
NAD 1927 (NADCON CONUS) Colorado North 501			
Ground Elevation: 5163.0 RIG @ 5188.0ft (True 30)			
Northing	Easting	Latitude	Longitude
584338.53	2337361.93	40° 55' 51.701 N	104° 16' 44.839 W



**T M**  
Azimuths to True North  
Magnetic North: 8.80°  
Magnetic Field  
Strength: 53623.6snT  
Dip Angle: 67.62°  
Date: 1/15/2010  
Model: IGRF200510

Project: DJ - Hereford Ranch  
Site: Garden Creek 06-11H  
Well: Garden Creek 6-11H  
Plan: APD

## SECTION DETAILS

Sec	MD	Inc	Azi	TVD	+N/-S	+E/-W	DLeg	TFace	VSec	Target
1	0.0	0.00	0.00	0.0	0.0	0.0	0.00	0.00	0.0	
2	6487.5	0.00	0.00	6487.5	0.0	0.0	0.00	0.00	0.0	
3	7237.5	90.00	297.40	6965.0	219.7	-423.9	12.00	297.40	477.3	
4	10735.1	90.00	297.40	6965.0	1829.3	-3529.1	0.00	0.00	3973.4	Garden Creek 6-11H (Target 1)
5	11654.7	90.00	315.02	6965.0	2370.5	-4268.2	1.92	90.00	4882.2	Garden Creek 6-11H (BHL)

## TARGET DETAILS

Name	TVD	+N/-S	+E/-W	Northing	Easting	Latitude	Longitude	Shape
Garden Creek 6-11H (BHL)	6965.0	2370.5	-4268.2	586650.00	2333061.55	40° 56' 15.119 N	104° 17' 40.448 W	Point
Garden Creek 6-11H (Target 1)	6965.0	1829.3	-3529.1	586119.06	2333808.02	40° 56' 9.773 N	104° 17' 30.818 W	Po int