



SUPERIOR
WELL SERVICES
Black Lick, Pa.
Mercer, Pa.
Wooster, Oh.
Cleveland, Ok.
Trinidad, Co.

CEMENT BOND GAMMA RAY LOG

Company		XTO Energy Inc.	
Well		Apache Canyon 31-12	
Field		Purgatorie River	
County		Las Animas	
State		CO	
Location:		API # : 05 071 09120 00 2482' FSL & 331' FWL	
SEC 31 TWP 33S RGE 67W		Other Services Pressure Control	
Permanent Datum		Ground Level	Elevation 7743'
Log Measured From		Ground Level	K.B. ----- D.F. ----- G.L. 7743'
Drilling Measured From		Ground Level	
Date	3-21-07		
Run Number	One		
Depth Driller	2200'		
Depth Logger	2152'		
Bottom Logged Interval	2150'		
Top Log Interval	Surface		
Open Hole Size	7 7/8"		
Type Fluid	Water		
Density / Viscosity	///		
Max. Recorded Temp.	115F		
Estimated Cement Top	696'		
Time Well Ready	Portable Mast		
Time Logger on Bottom	3:00PM		
Equipment Number	T0698		
Location	Trinidad		
Recorded By	J Sisneros		
Witnessed By	Mr. Mike Polley		
Borehole Record		Tubing Record	
Run Number	Bit	From	To
		Size	Weight
		From	To
Casing Record	Size	Wgt/Ft	Top
Surface String	8 5/8"		00
Prot. String			
Production String	5 1/2"		00
Liner			N/A

<<< Fold Here >>>

All interpretations are opinions based on inferences from electrical or other measurements and we cannot and do not guarantee the accuracy or correctness of any interpretation, and we shall not, except in the case of gross or willful negligence on our part, be liable or responsible for any loss, costs, damages, or expenses incurred or sustained by anyone resulting from any interpretation made by any of our officers, agents or employees. These interpretations are also subject to our general terms and conditions set out in our current Price Schedule.

Comments

Turn at Bosque 4 mi.past weston, up Ciruela Canyon, stay right at windmill, stay on main road, second drive thru location.



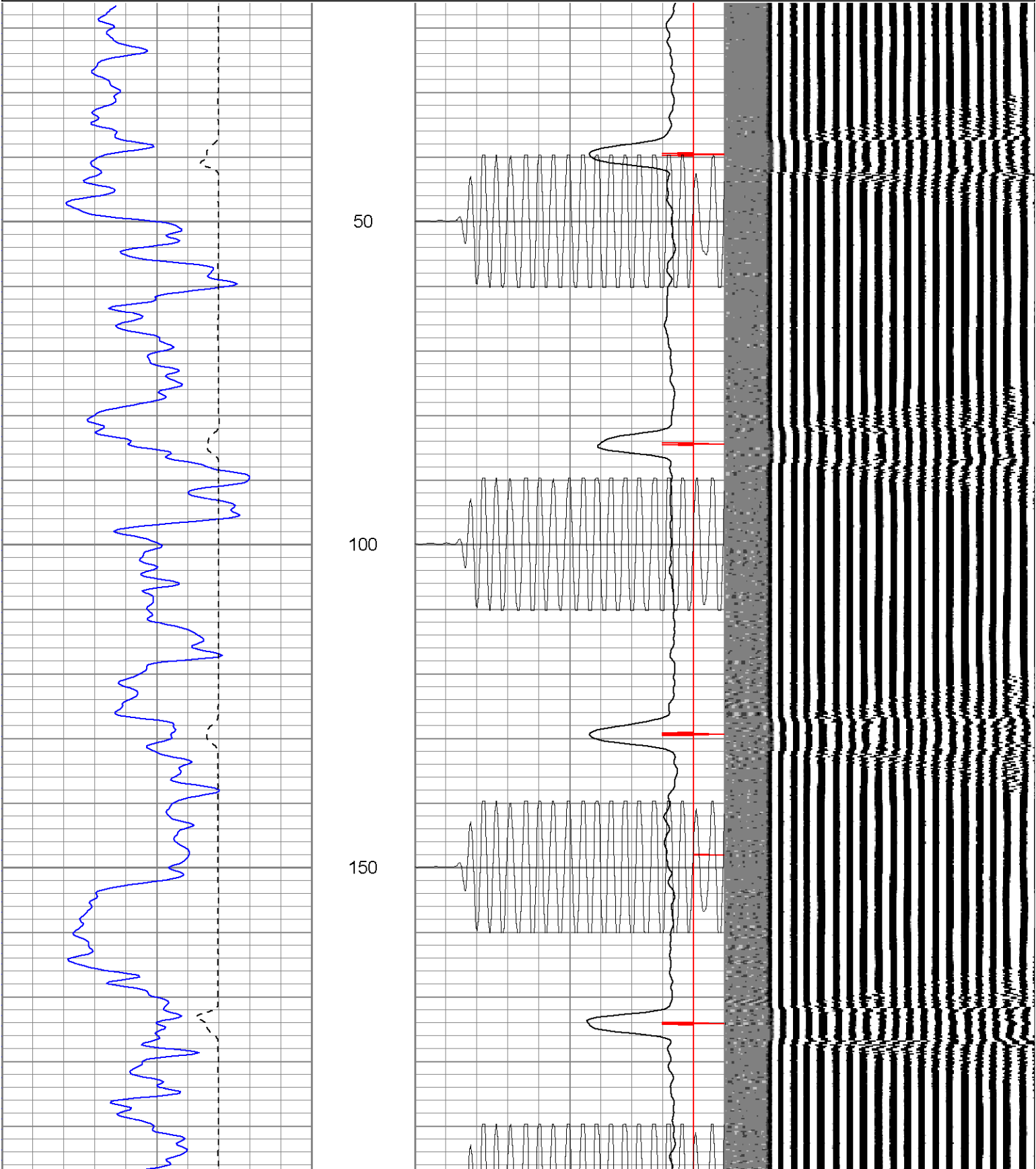
SUPERIOR

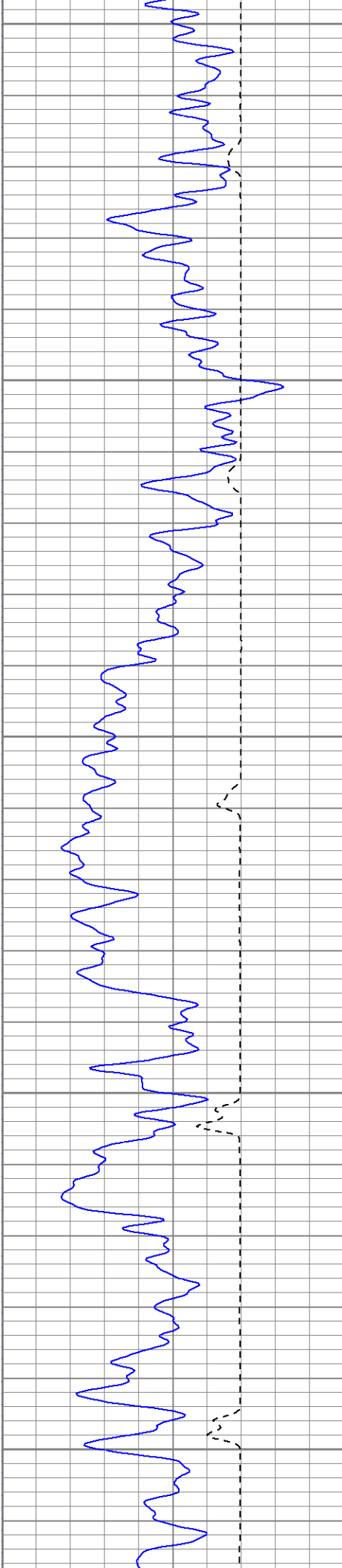
Black Lick, Pa.
Mercer, Pa.
Wooster, Oh.
Cleveland, Ok.
Trinidad, Co.

Main Pass (1000PSI)

Database File: ac311232107b.db
Dataset Pathname: pass2.1
Presentation Format: cblrt
Dataset Creation: Wed Mar 21 15:39:27 2007 by Calc Open-Cased 060407
Charted by: Depth in Feet scaled 1:240

0	GR (GAPI)	200	0	AMP3 (mV)	100	200	Variable Density	1200
200	GR (GAPI)	400	18	CCL	-2			
400	TT3 (usec)	200	200	CBL5	1200			





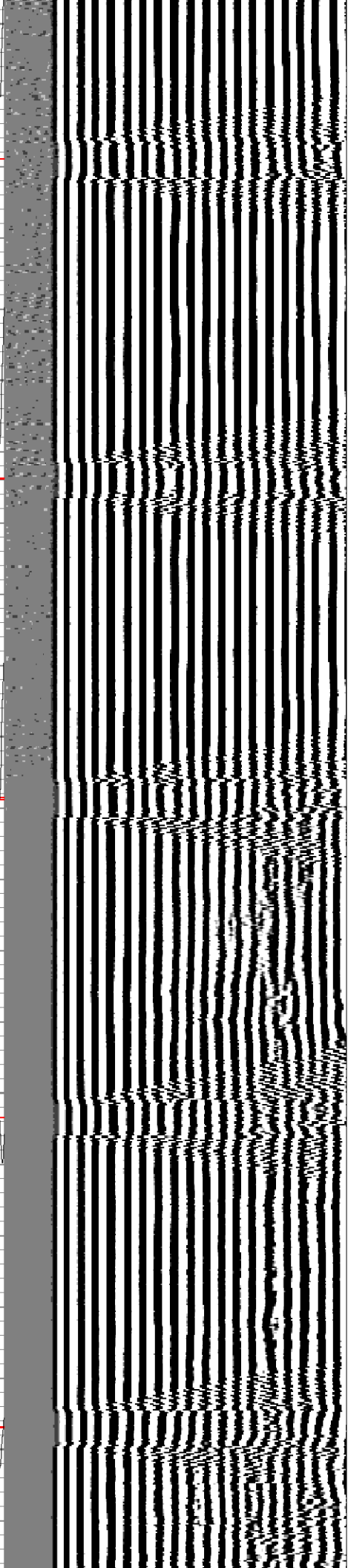
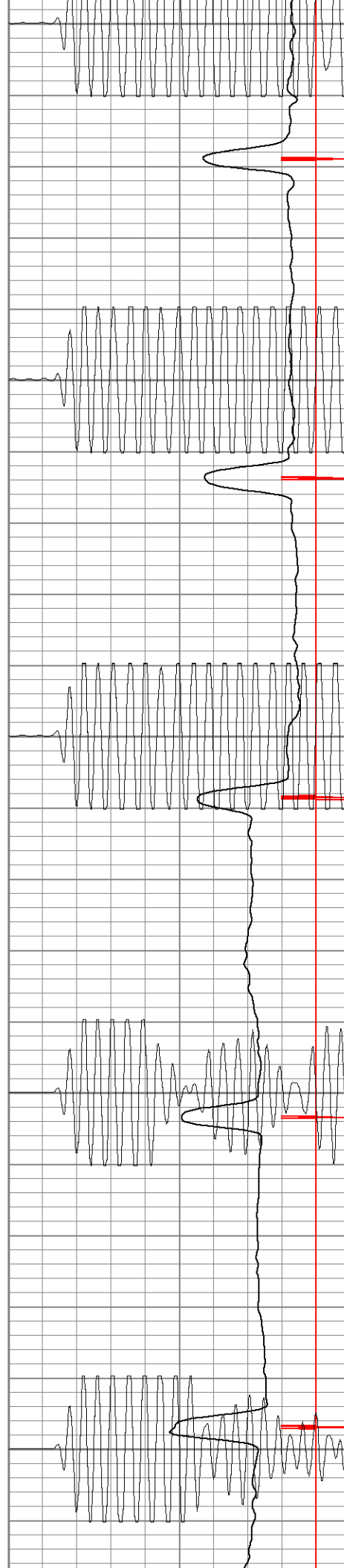
200

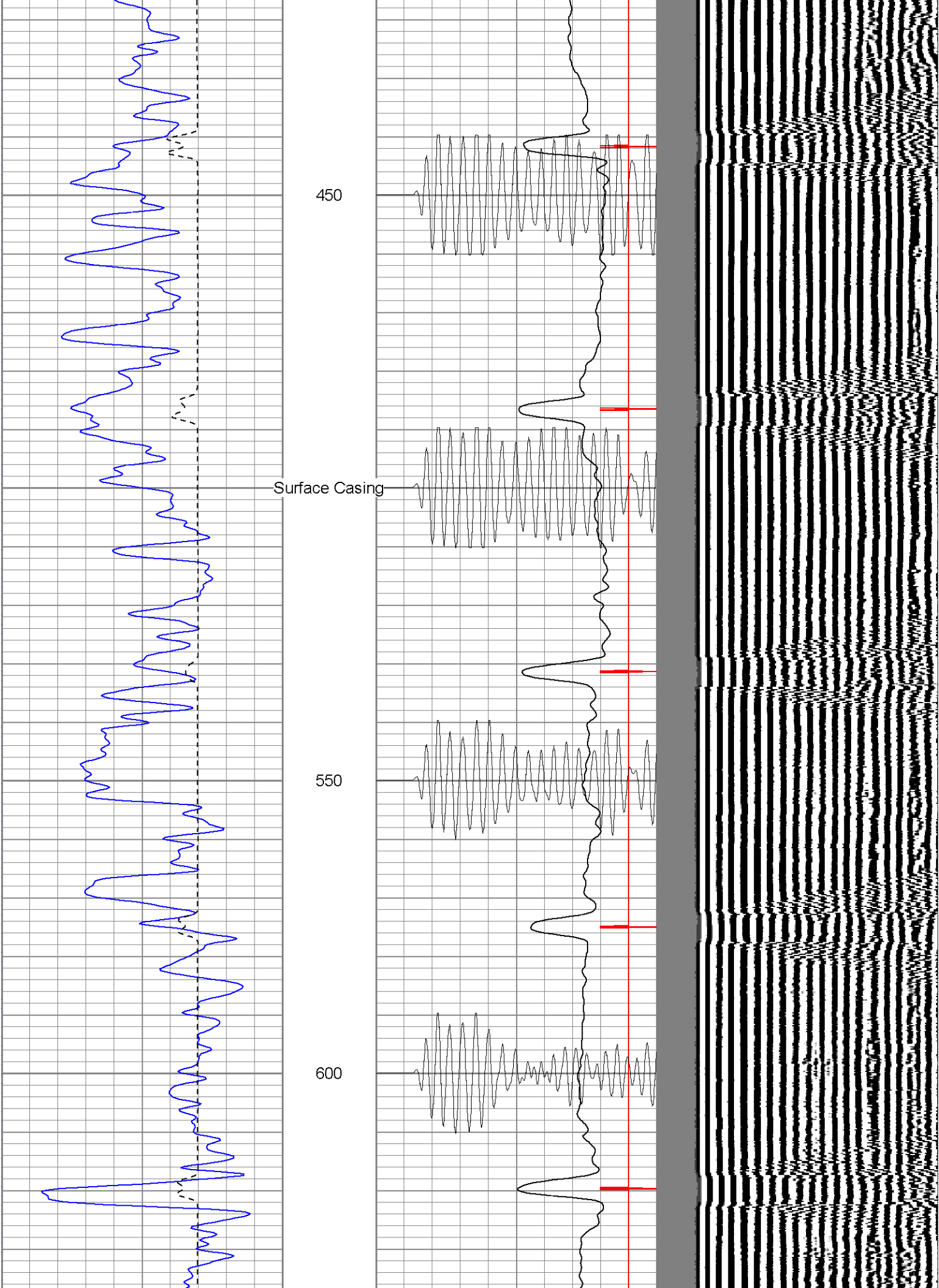
250

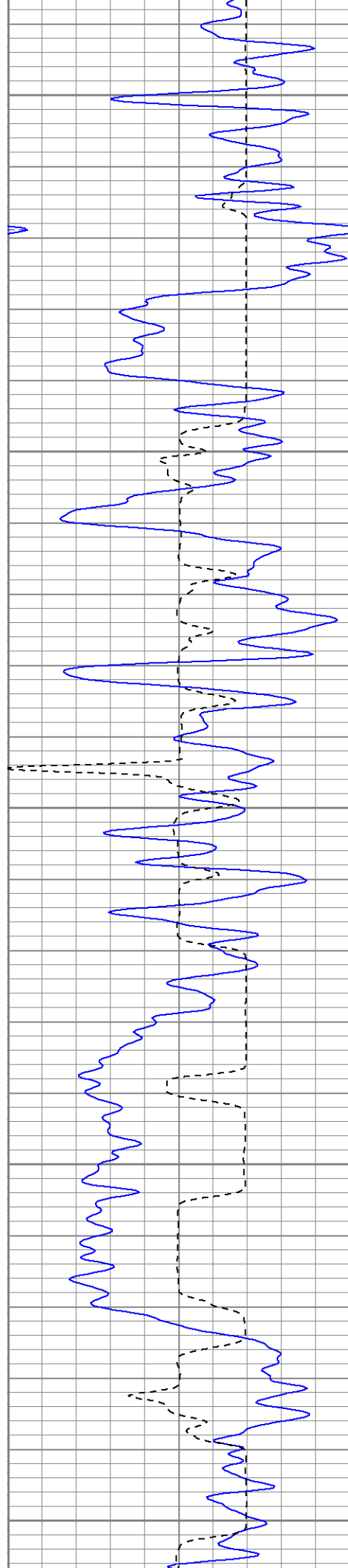
300

350

400







650

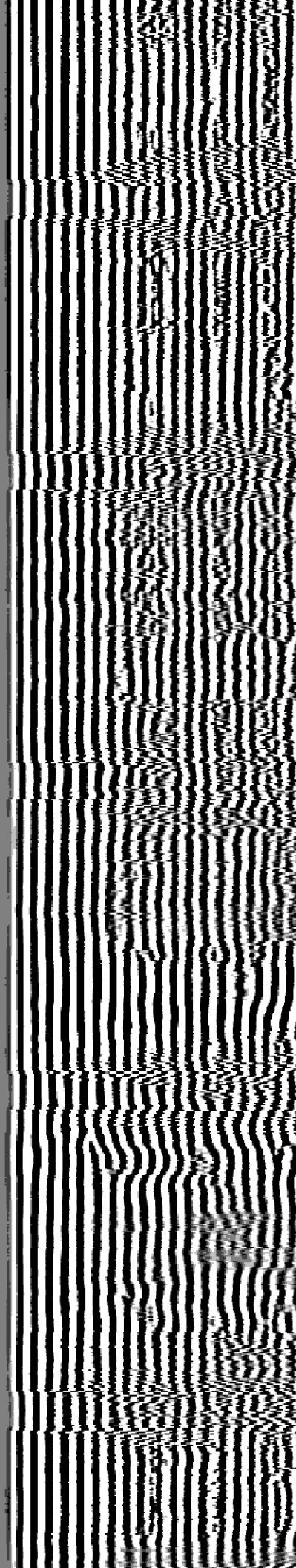
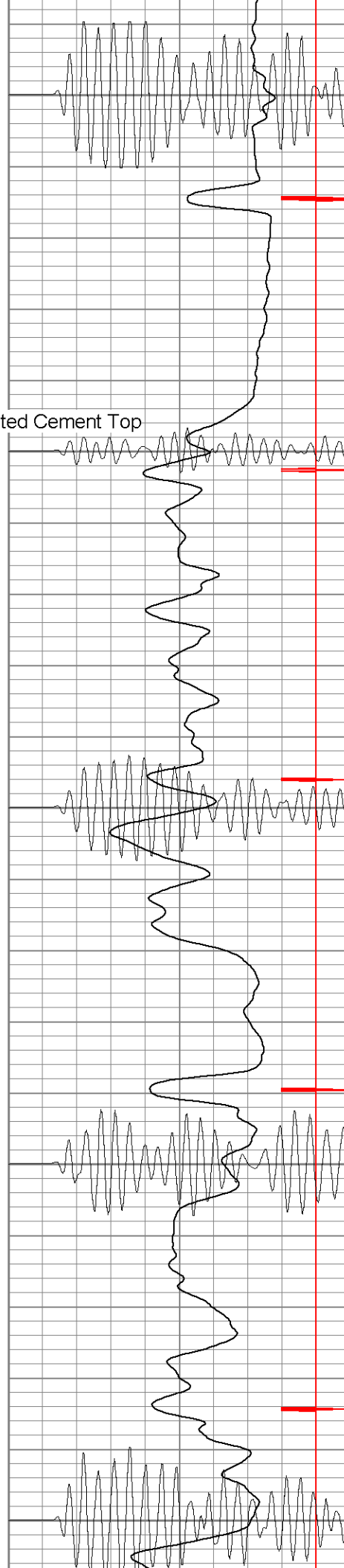
Estimated Cement Top

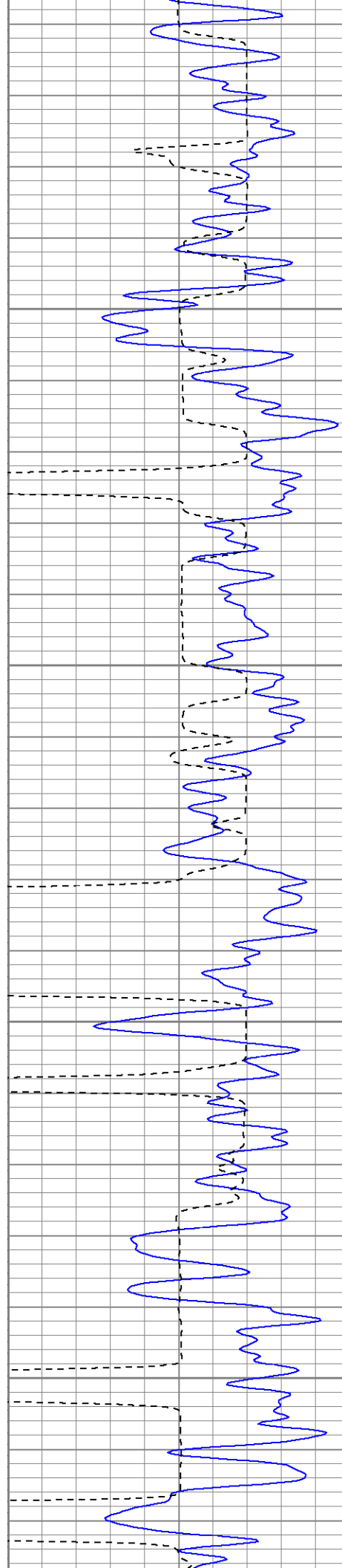
700

750

800

850



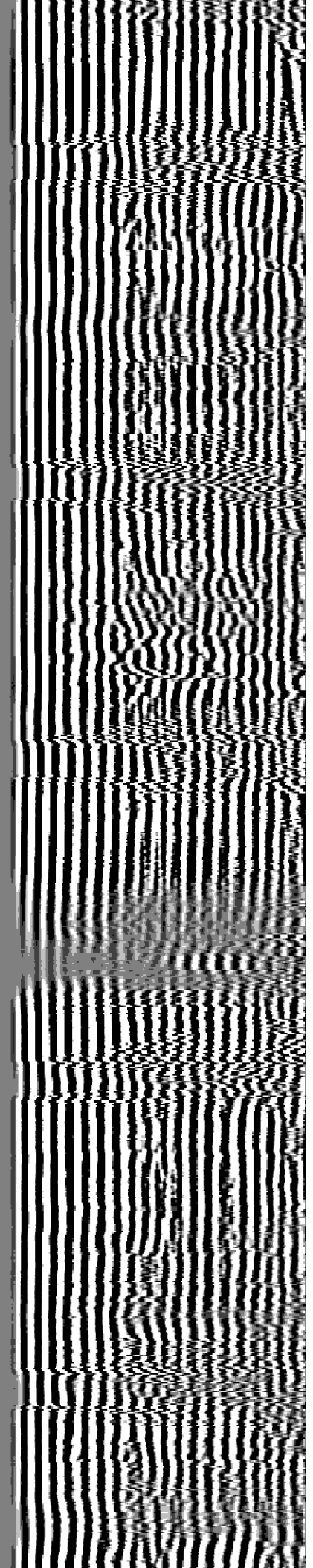
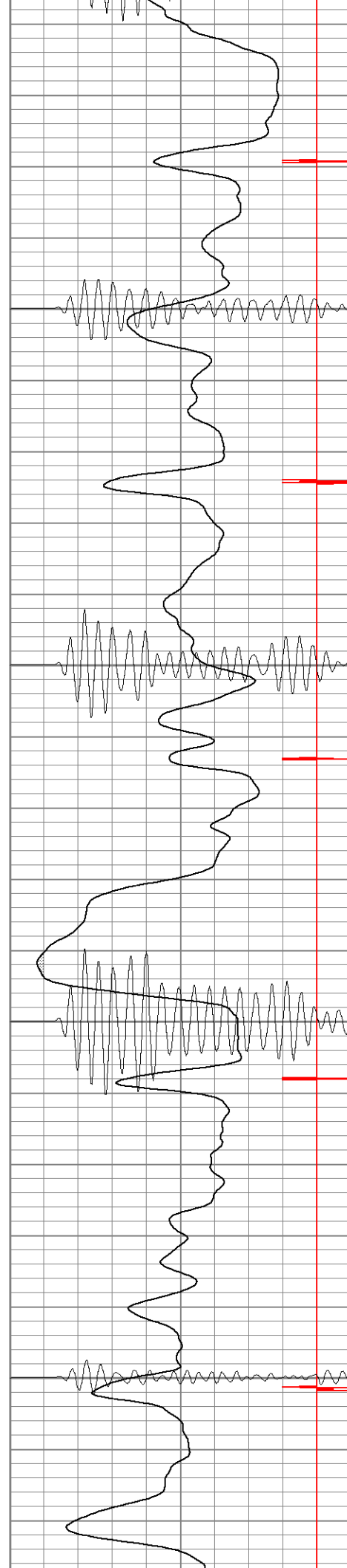


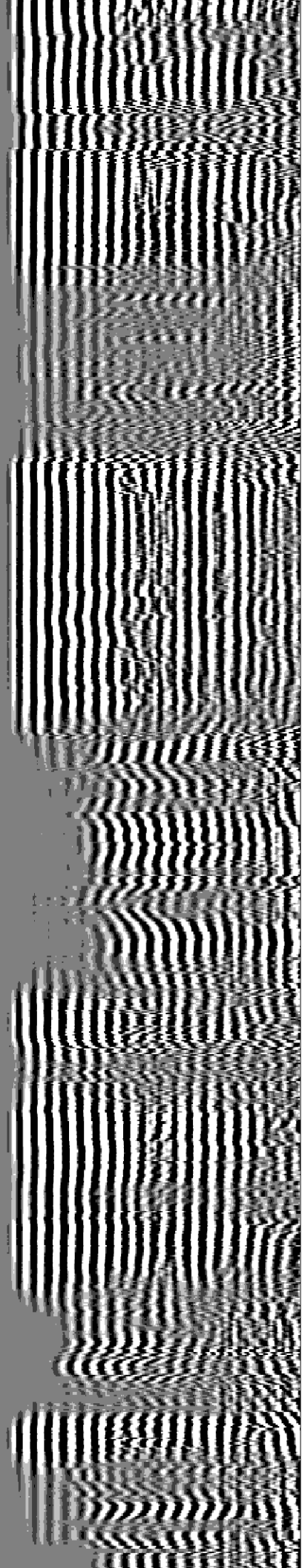
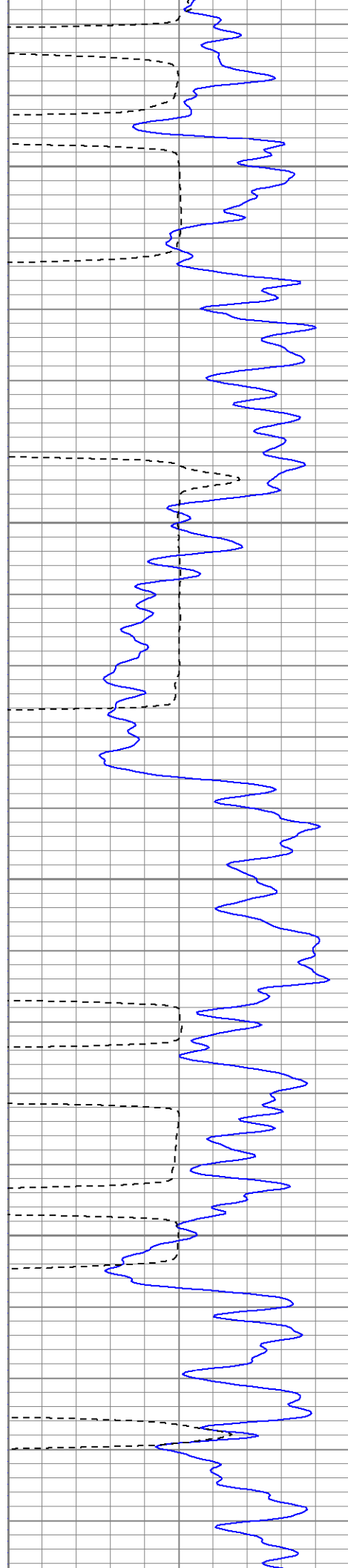
900

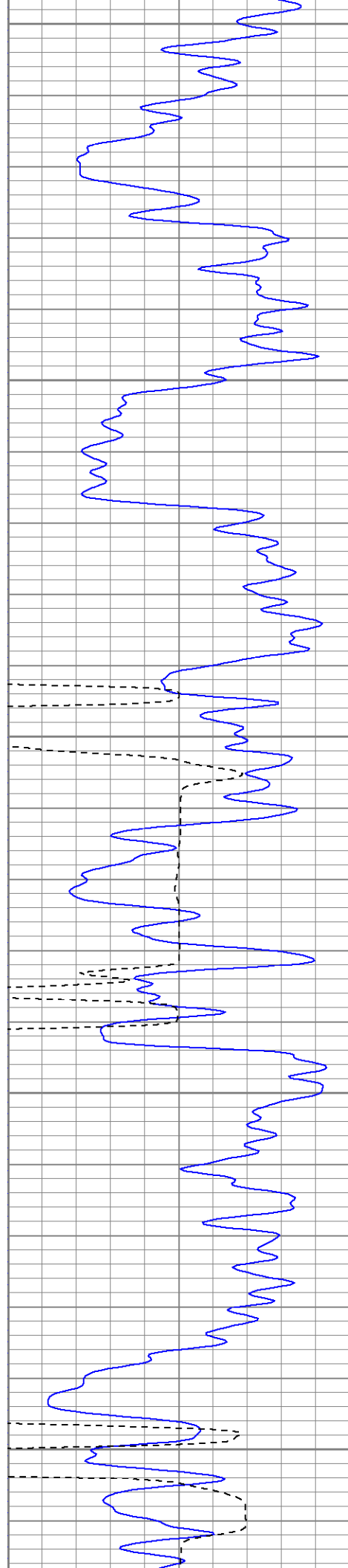
950

1000

1050







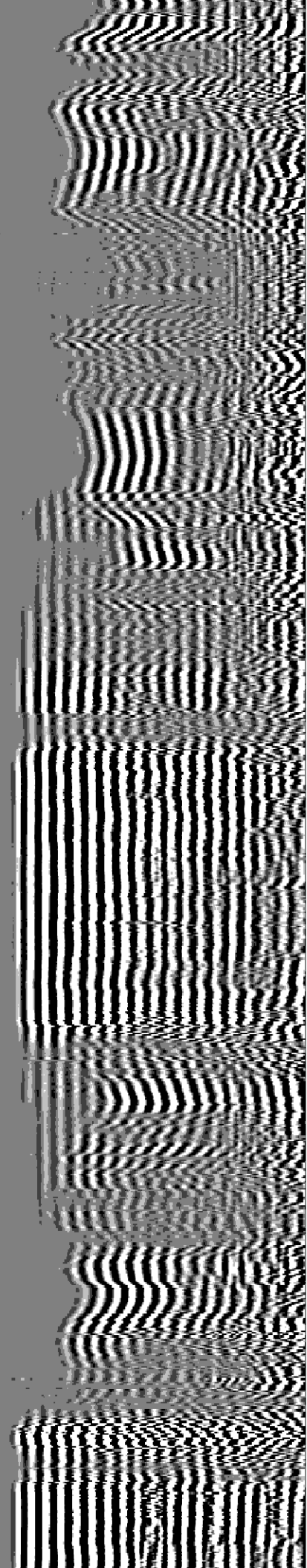
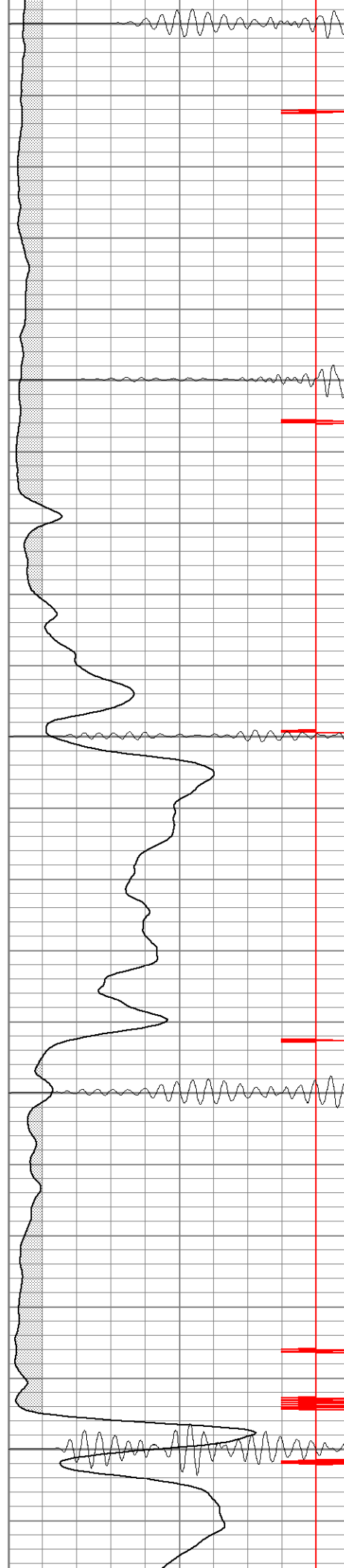
1300

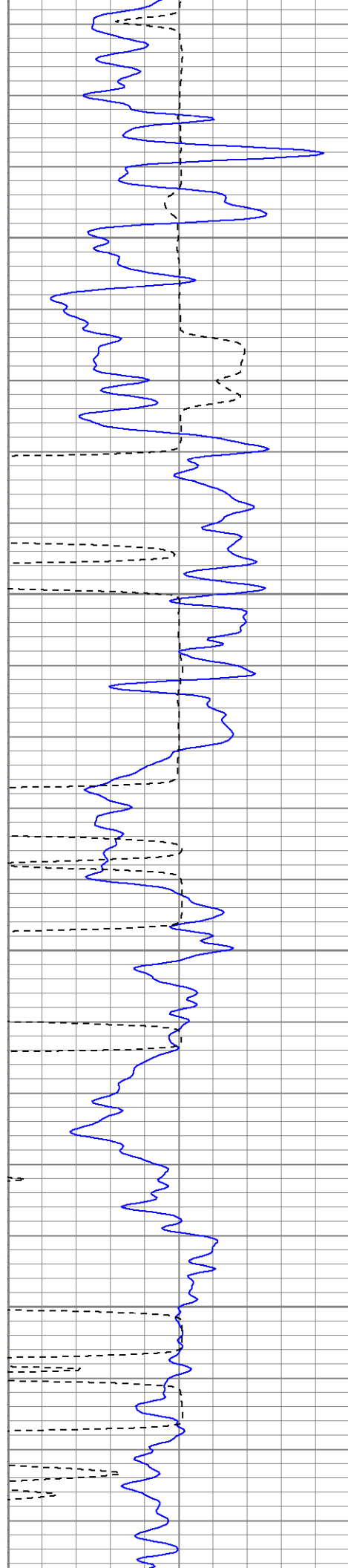
1350

1400

1450

1500



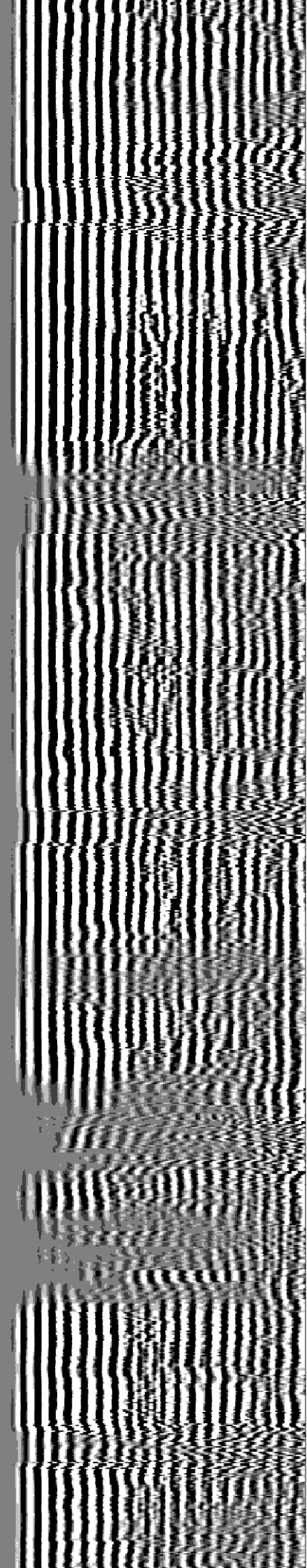
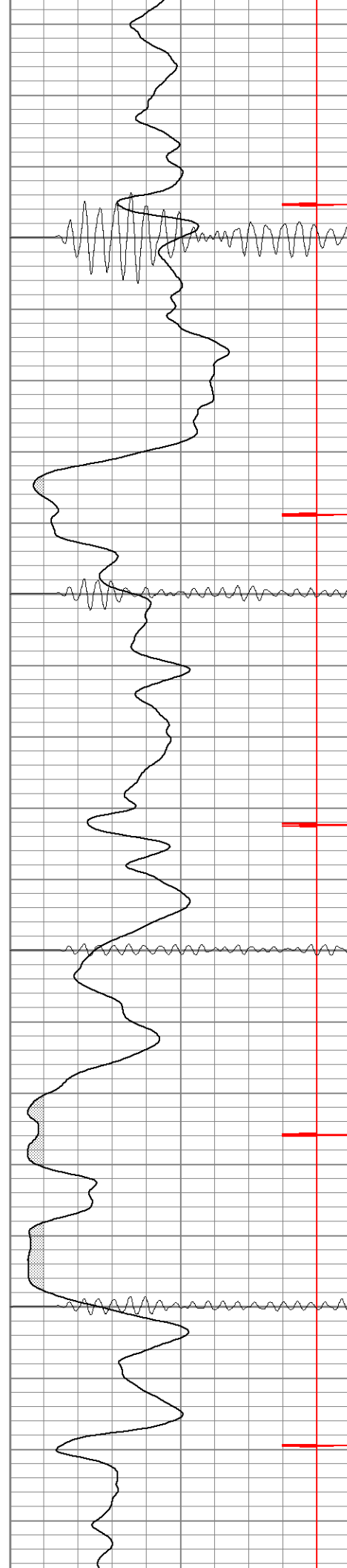


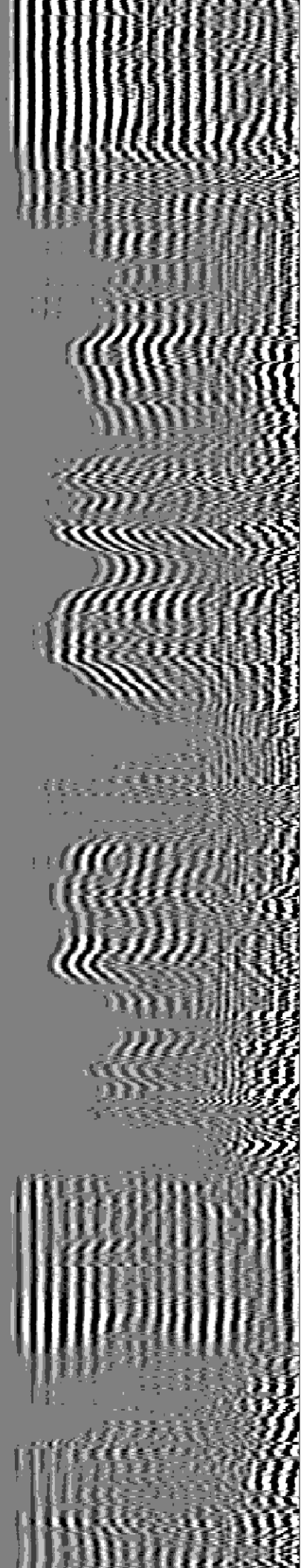
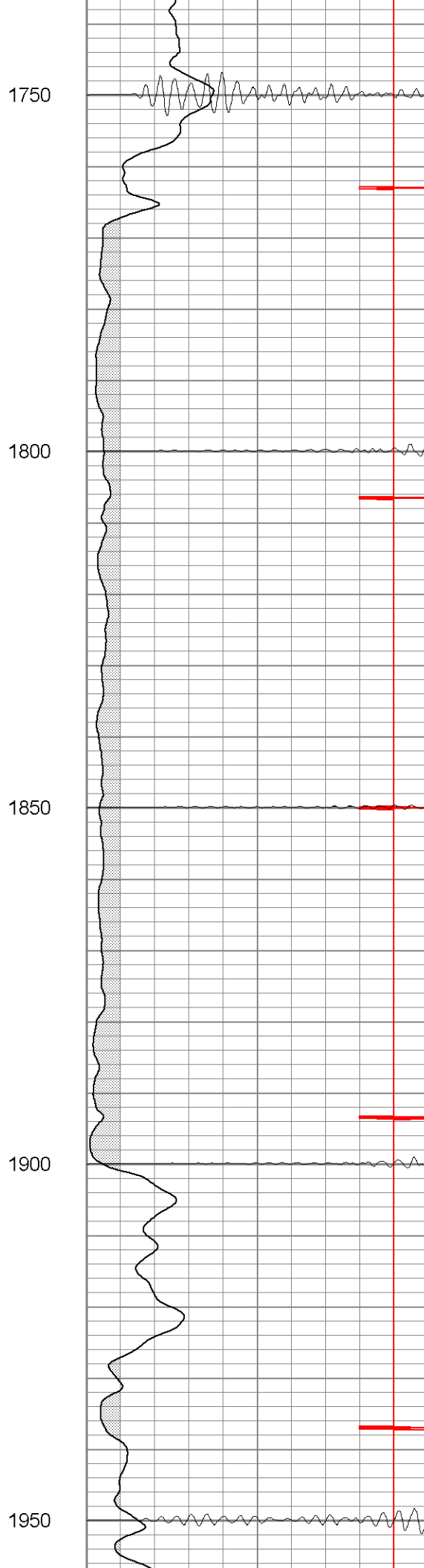
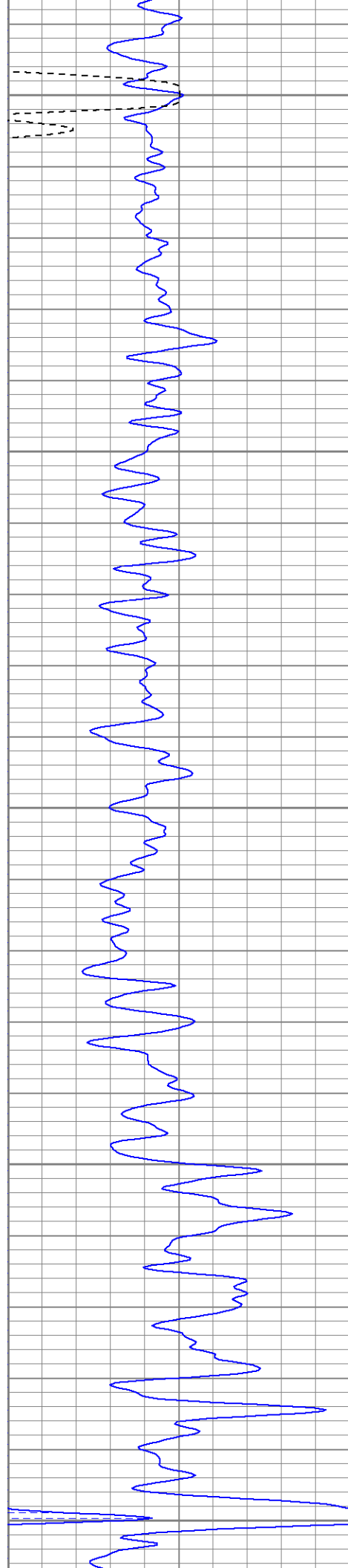
1550

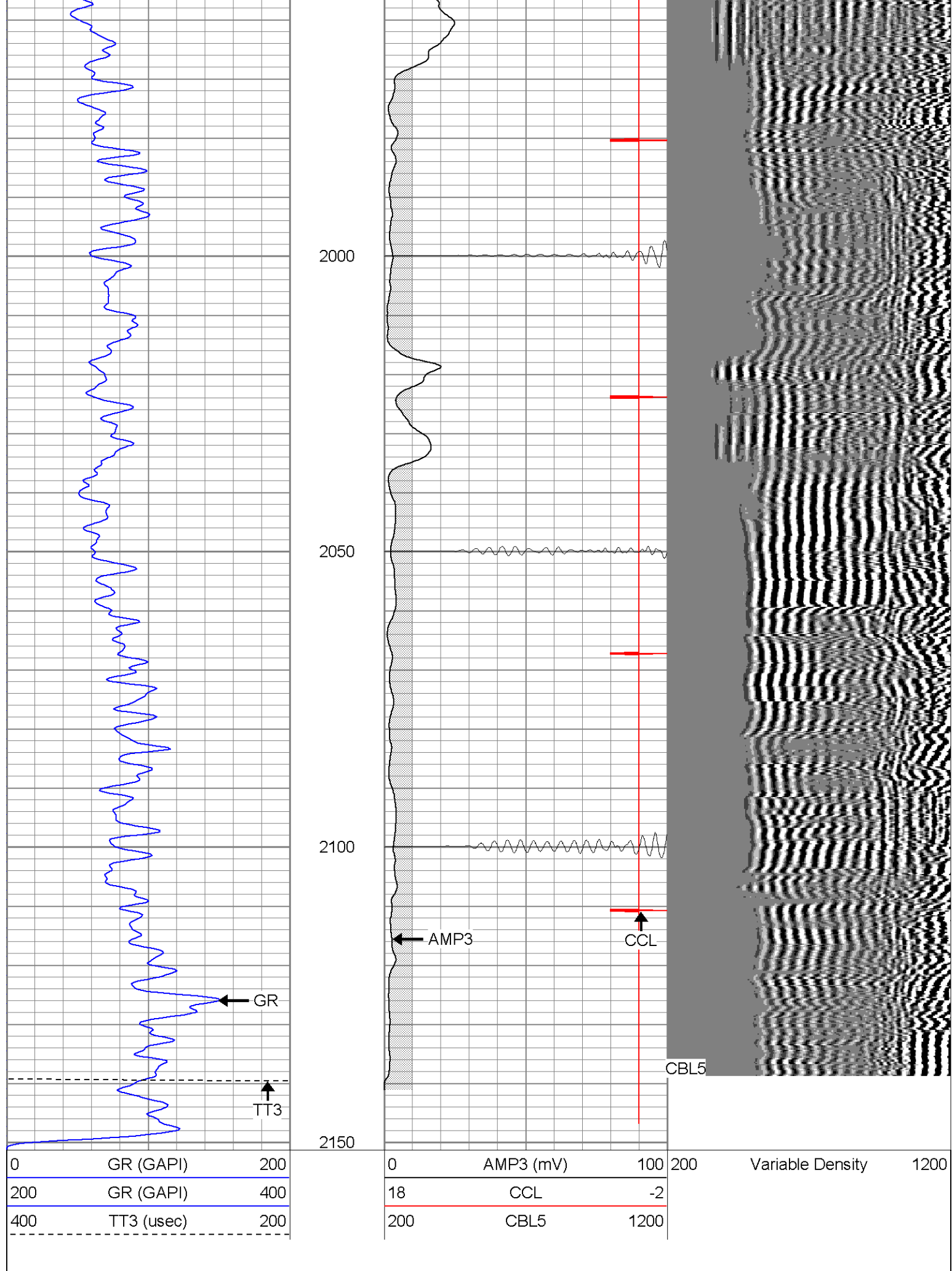
1600

1650

1700









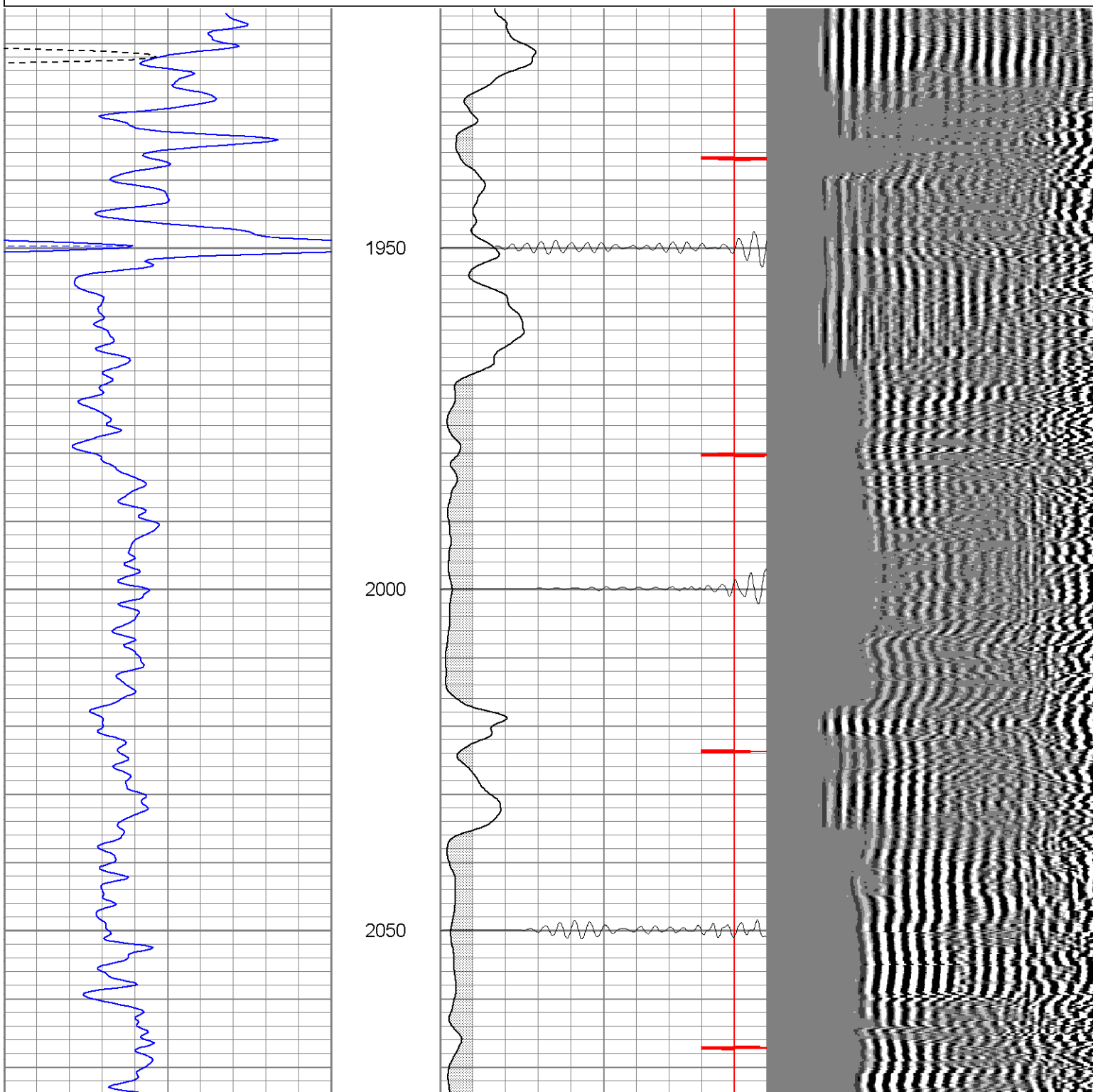
SUPERIOR

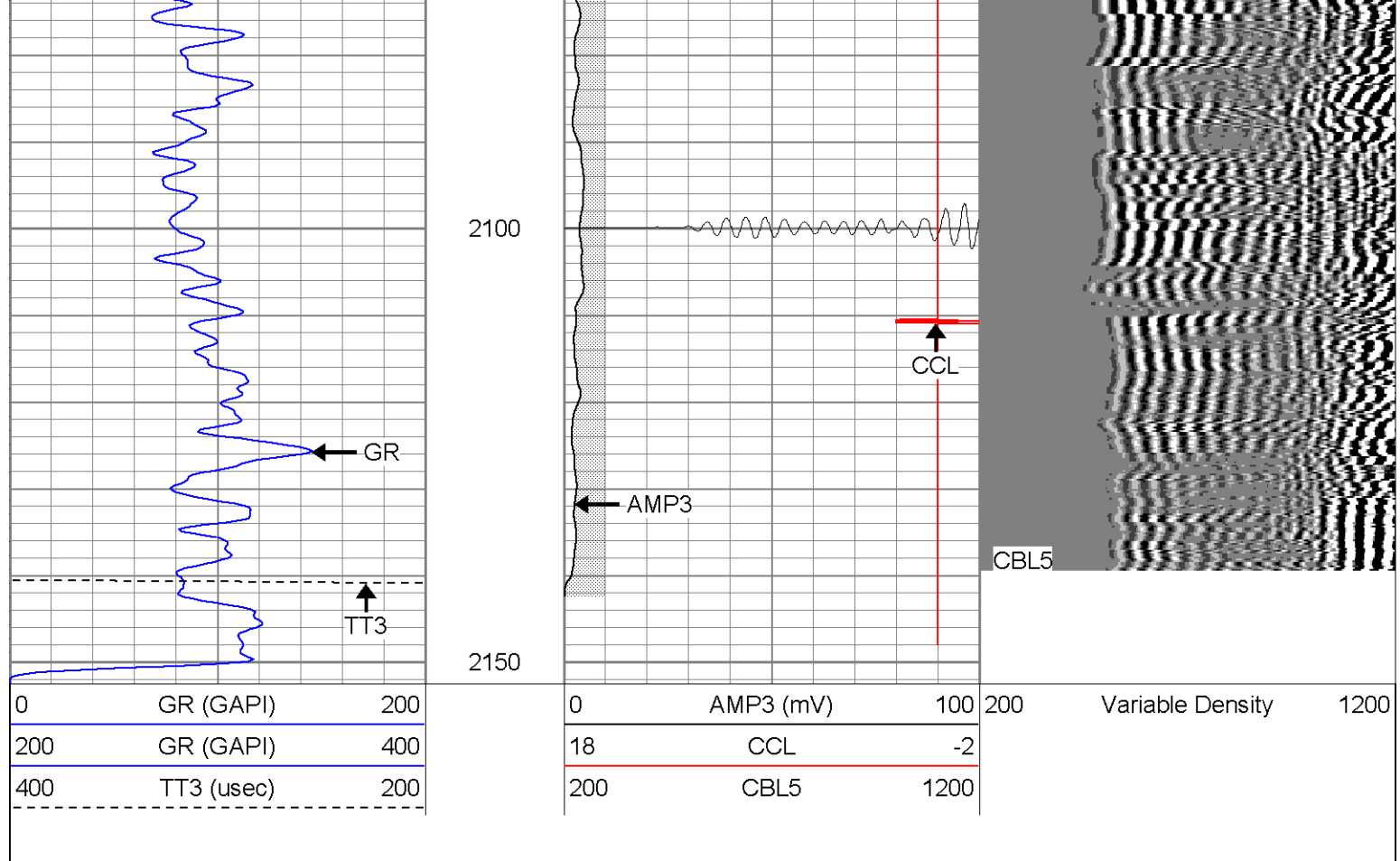
Black Lick, Pa.
Mercer, Pa.
Wooster, Oh.
Cleveland, Ok.
Trinidad, Co.

Repeat Section (0PSI)

Database File: ac311232107b.db
Dataset Pathname: pass1
Presentation Format: cblrt
Dataset Creation: Wed Mar 21 14:11:48 2007 by Log Open-Cased 060407
Charted by: Depth in Feet scaled 1:240

0	GR (GAPI)	200	0	AMP3 (mV)	100	200	Variable Density	1200
200	GR (GAPI)	400	18	CCL	-2			
400	TT3 (usec)	200	200	CBL5	1200			





Calibration Report

Database File: ac311232107b.db
 Dataset Pathname: pass1
 Dataset Creation: Wed Mar 21 14:11:48 2007 by Log Open-Cased 060407

Gamma Ray Calibration Report

Serial Number: Titan2.75
 Tool Model: 2.75
 Performed: Wed Mar 07 08:33:06 2007

Calibrator Value: 200.0 GAPI

Background Reading: 40.0 cps
 Calibrator Reading: 240.0 cps

Sensitivity: 1.1000 GAPI/cps

Cement Bond Log Calibration Report

Serial Number: Titan4
 Tool Model: 4
 Performed: Thu Mar 08 08:32:41 2007

Depth: 1054.62 ft
 Casing Diameter: 5.5 in

	3' Spacing	5' Spacing	
Signal Zero:	0	1	mV
Calibrated Amplitude:	85	85	mV
Reading at Signal Zero:	0.00161133	0.0143555	V
Reading in Free Pipe:	1.27	1.65081	V
Gain:	67.0142	51.3306	

Offset:

0.25

0.263125

Sensor	Offset (ft)	Schematic	Description	Len (ft)	OD (in)	Wt (lb)
CHD	20.38		CHD-None (0)	0.75	1.50	5.00
CENT	19.63		CENT-X (2)	3.00	1.69	25.00
WVF5	12.82		CBL-4 (Titan4)	8.15	2.25	110.00
WVF3	11.82					
CENT	8.48		CENT-X (1)	3.00	1.69	25.00
CCL	4.27		CCL-2.75 (Titan2.75)	1.71	2.75	15.00
GR	1.42		GR-2.75 (Titan2.75) Two Point	3.77	2.75	25.00
Dataset: ac311232107b.db: field/well/run1/pass1 Total Length: 20.38 ft Total Weight: 205.00 lb O.D. 2.75 in						