



**SUPERIOR**  
Black Lick, Pa.  
Mercer, Pa.  
Wooster, Oh.  
Cleveland, Ok.  
Trinidad, Co.

## CEMENT BOND

Company XTO Energy Inc.  
Well Golden Eagle 32-08  
Field Purgatorie River  
County Las Animas  
State CO

Company XTO Energy Inc.  
Well Golden Eagle 32-08  
Field Purgatorie River  
County Las Animas  
State CO

Location: API #: 05 071 09107 00

2857' FNL & 758' FEL

SEC 32 TWP 33S RGE 67W

Permanent Datum Ground Level Elevation 7743'  
Log Measured From Ground Level  
Drilling Measured From Ground Level

Other Services  
Pressure  
Control  
Elevation  
K.B. ---  
D.F. ---  
G.L. 7743'

Date

6-15-07

Run Number

Two

Depth Driller

2360'

Depth Logger

1836'

Bottom Logged Interval

1834'

Top Log Interval

Surface

Open Hole Size

7 7/8

Type Fluid

Water

Density / Viscosity

///

Max. Recorded Temp.

///

Estimated Cement Top

664'

Time Well Ready

ROA

Time Logger on Bottom

8:30AM

Equipment Number

T0698

Location

Trinidad

Recorded By

J. Sineros

Witnessed By

Mr. Terry Maxwell

| Borehole Record   |     |             |    | Tubing Record |        |        |             |
|-------------------|-----|-------------|----|---------------|--------|--------|-------------|
| Run Number        | Bit | From        | To | Size          | Weight | From   | To          |
| Casing Record     |     |             |    |               |        |        |             |
| Surface String    |     | Size 8 5/8" |    | Wgt/Ft        |        | Top 00 | Bottom 495' |
| Prot. String      |     |             |    |               |        |        |             |
| Production String |     | 5.5"        |    |               |        | 00     |             |
| Liner             |     |             |    |               |        |        |             |

<<< Fold Here >>>

All interpretations are opinions based on inferences from electrical or other measurements and we cannot and do not guarantee the accuracy or correctness of any interpretation, and we shall not, except in the case of gross or willful negligence on our part, be liable or responsible for any loss, costs, damages, or expenses incurred or sustained by anyone resulting from any interpretation made by any of our officers, agents or employees. These interpretations are also subject to our general terms and conditions set out in our current Price Schedule.

### Comments

Lower Bosque, First right at Cherry Canyon, stay left at Y, stay on main road for 4 miles, first drive thru location.

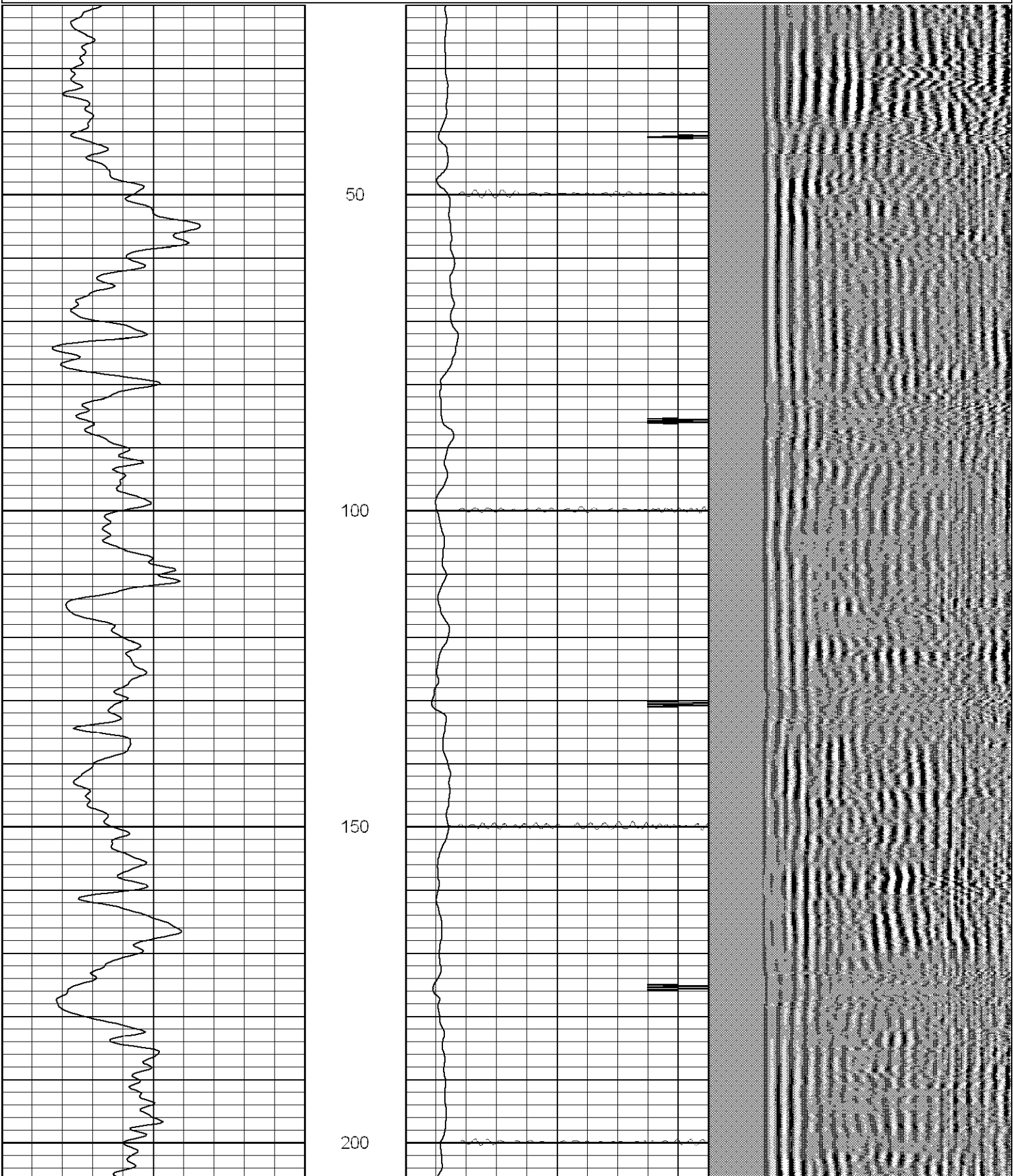


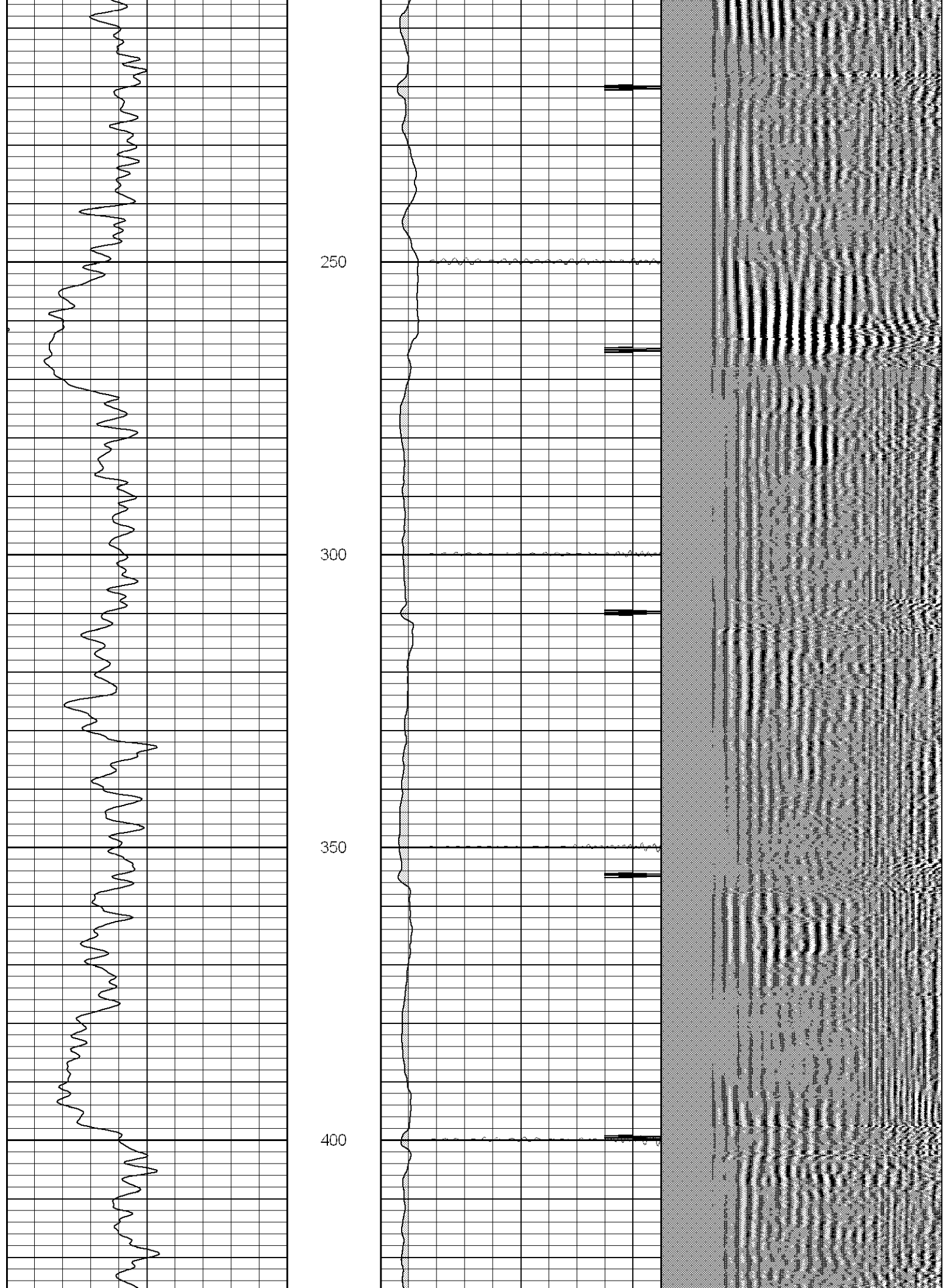
**SUPERIOR**

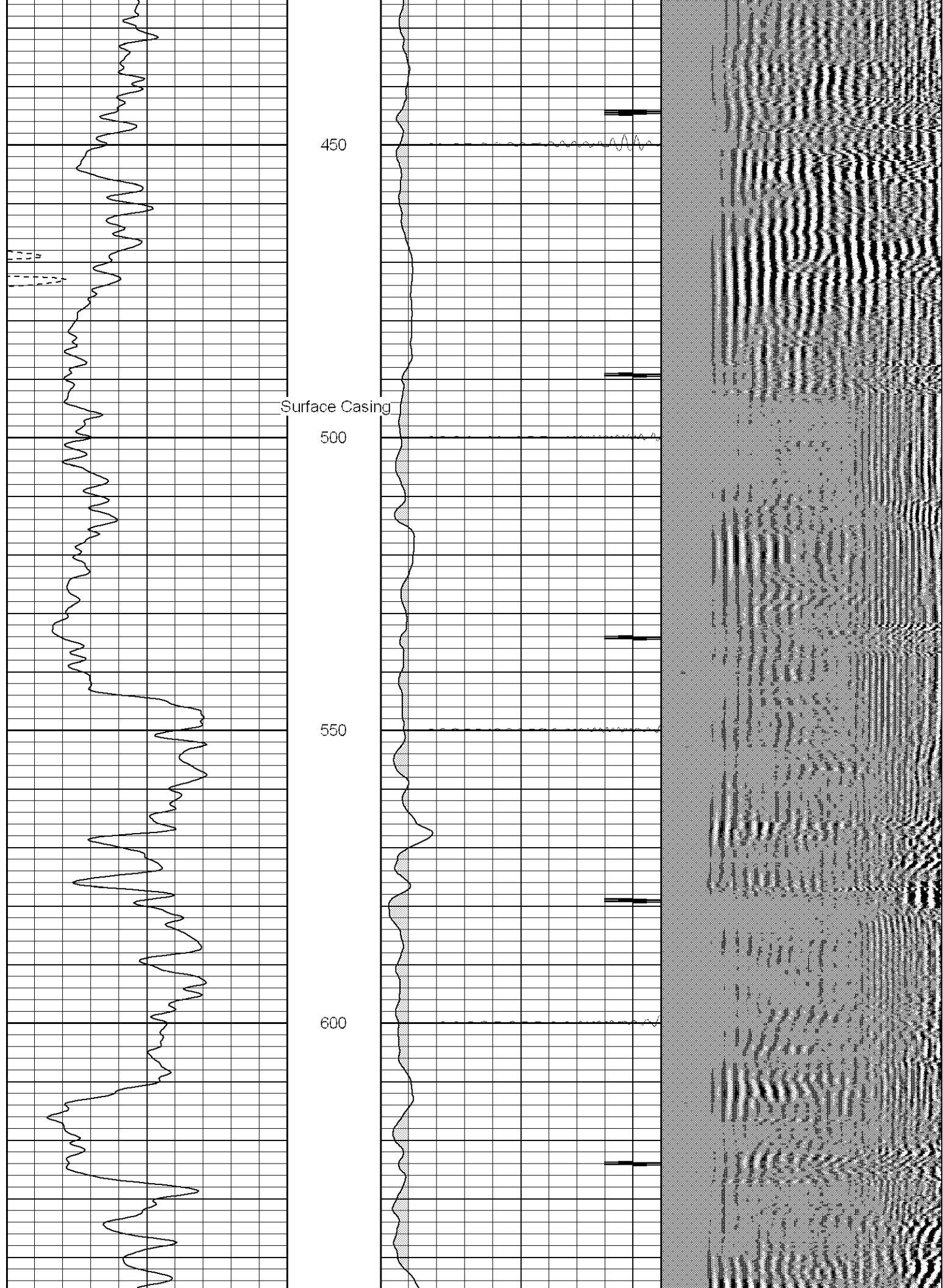
Black Lick, Pa.  
Mercer, Pa.  
Wooster, Oh.  
Cleveland, Ok.  
Trinidad, Co.

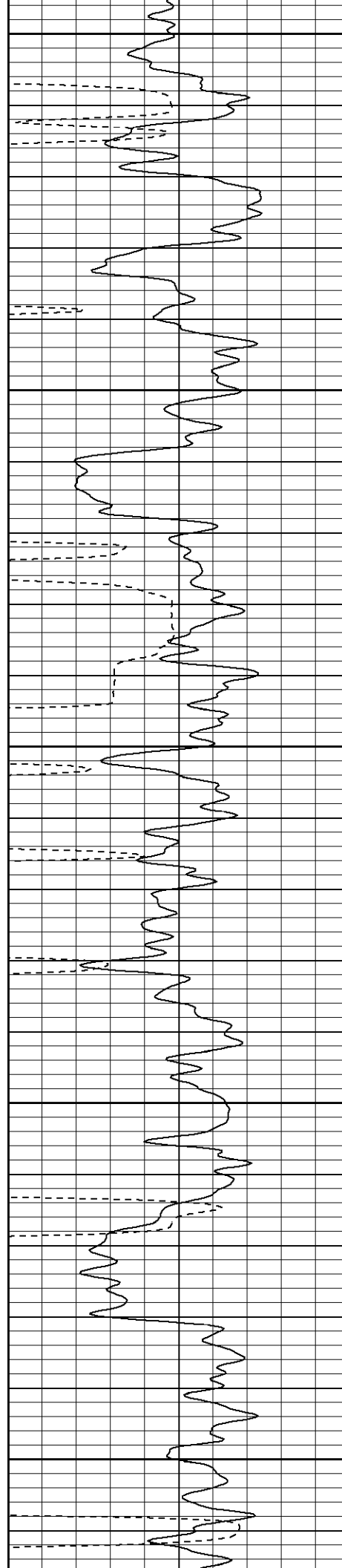
# Main Pass (1000PSI)

|     |            |     |     |           |      |     |                  |      |
|-----|------------|-----|-----|-----------|------|-----|------------------|------|
| 0   | GR (GAPI)  | 200 | 0   | AMP3 (mV) | 100  | 200 | Variable Density | 1200 |
| 400 | TT3 (usec) | 200 | 18  | CCL       | -2   |     |                  |      |
|     |            |     | 200 | CBL5      | 1200 |     |                  |      |









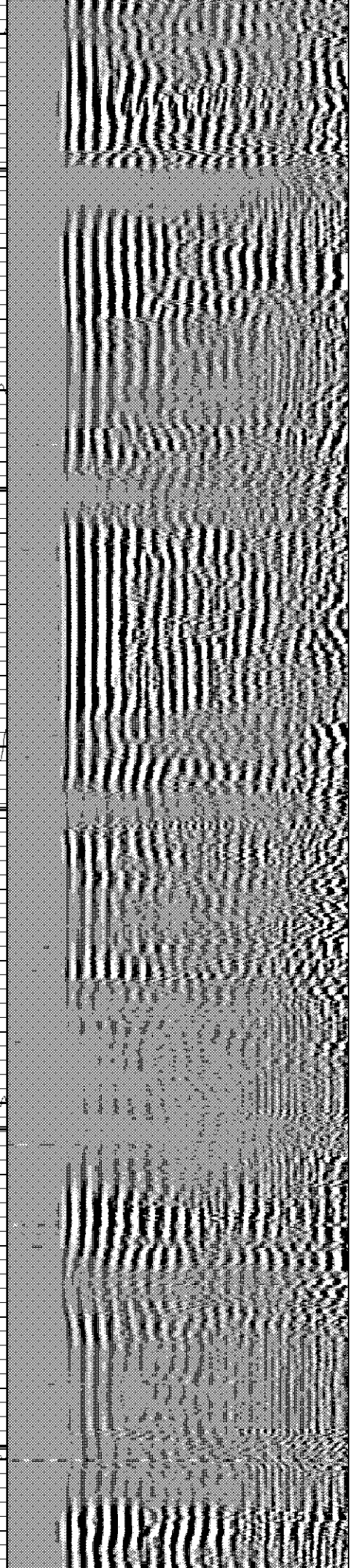
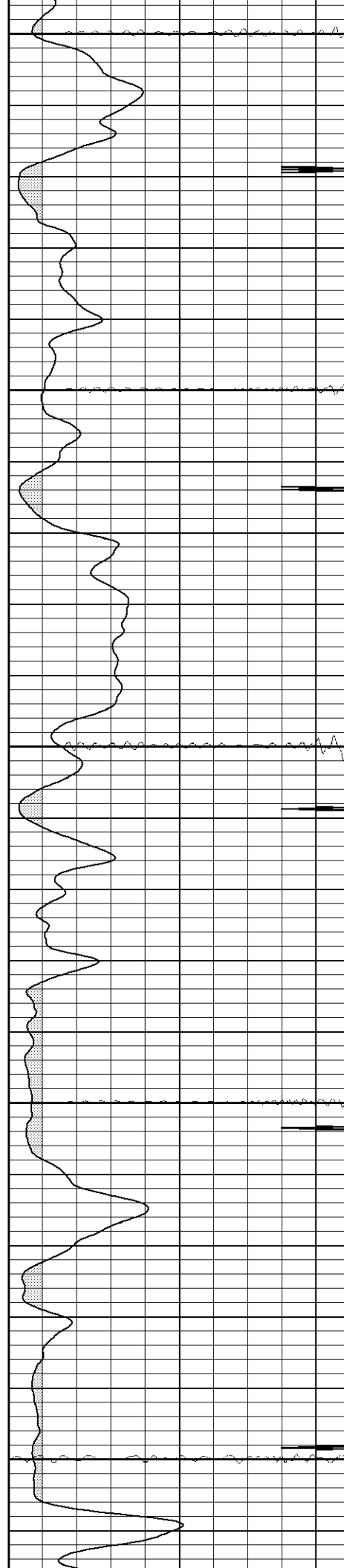
650

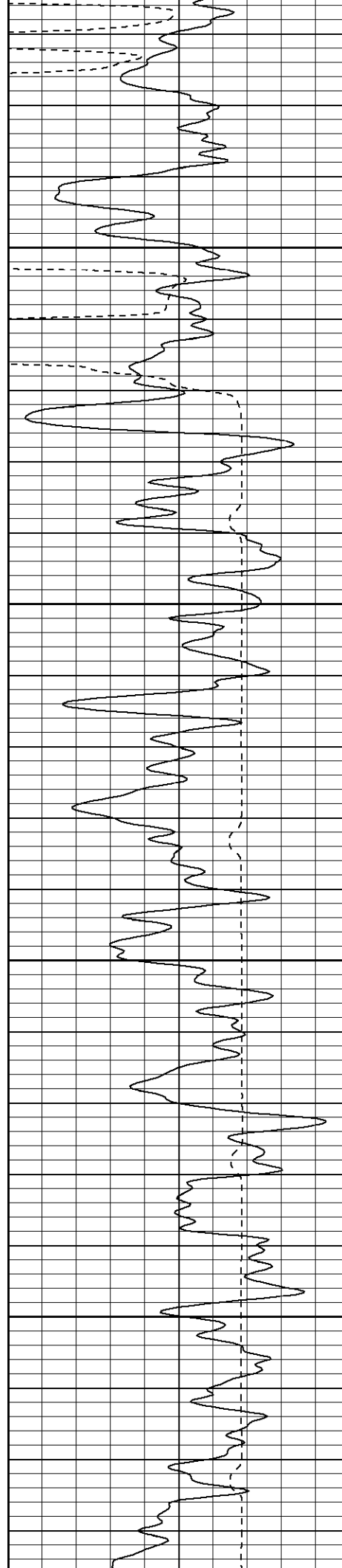
700

750

800

850



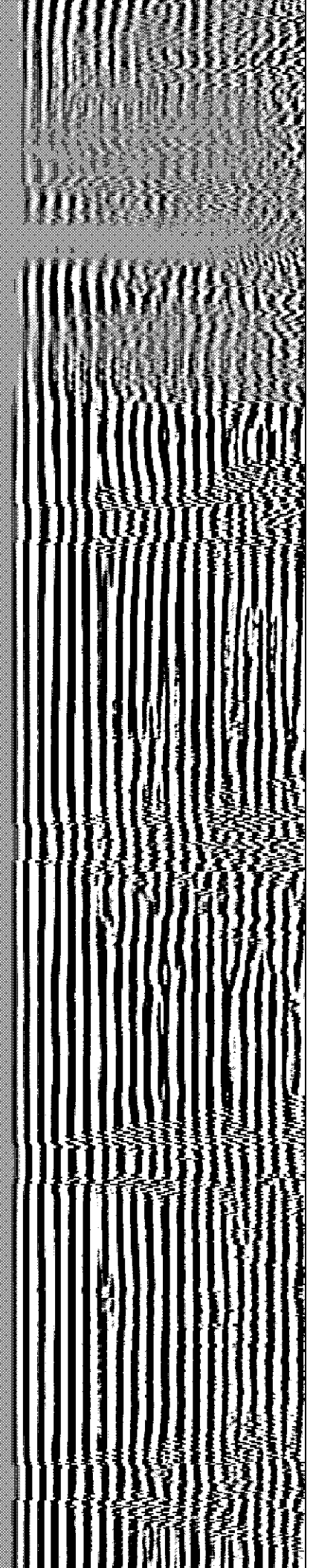
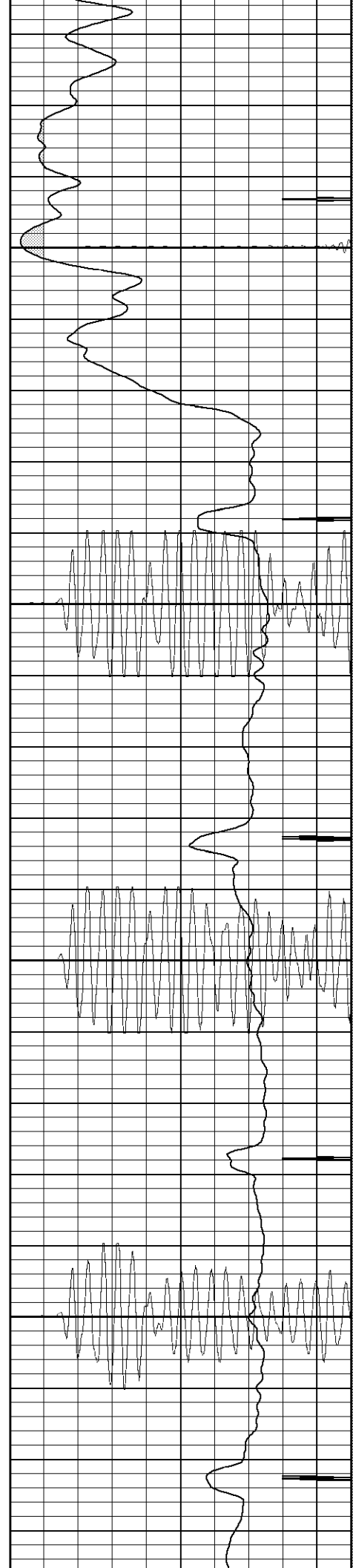


900

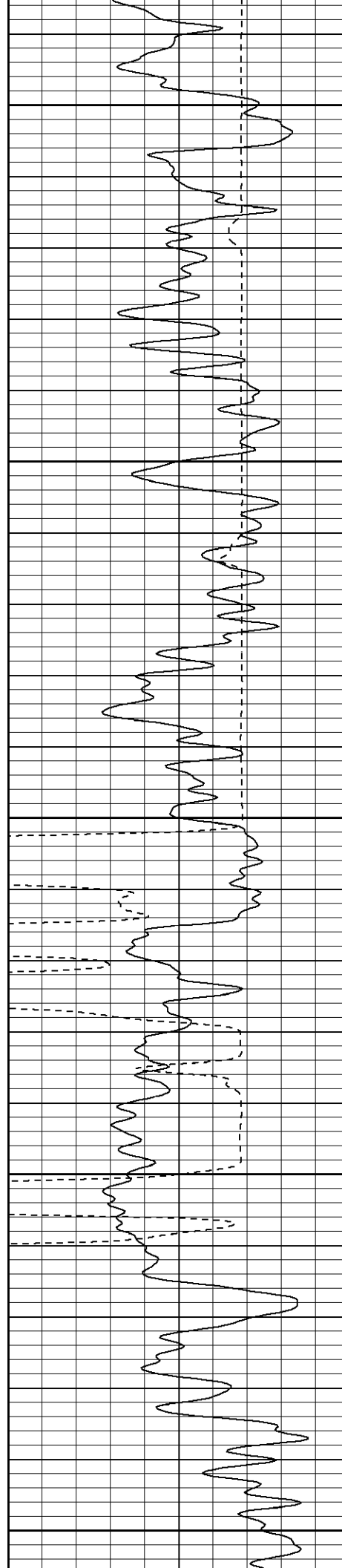
950

1000

1050







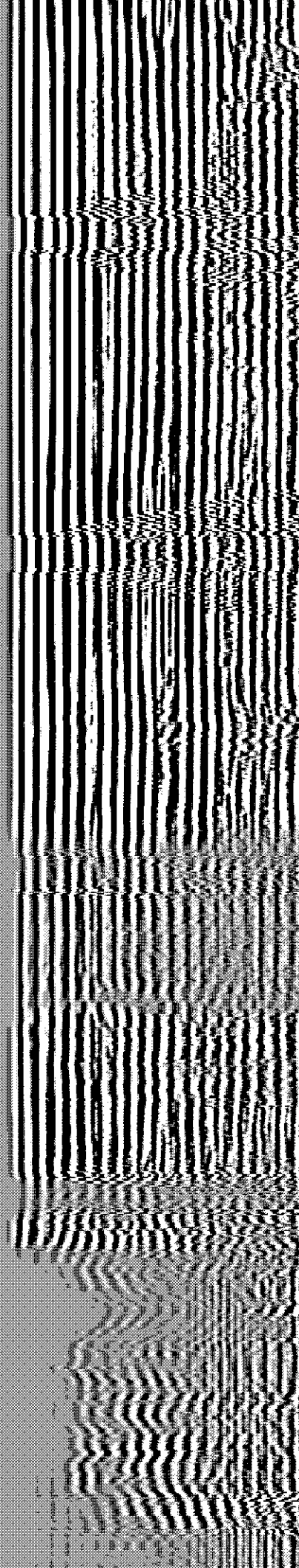
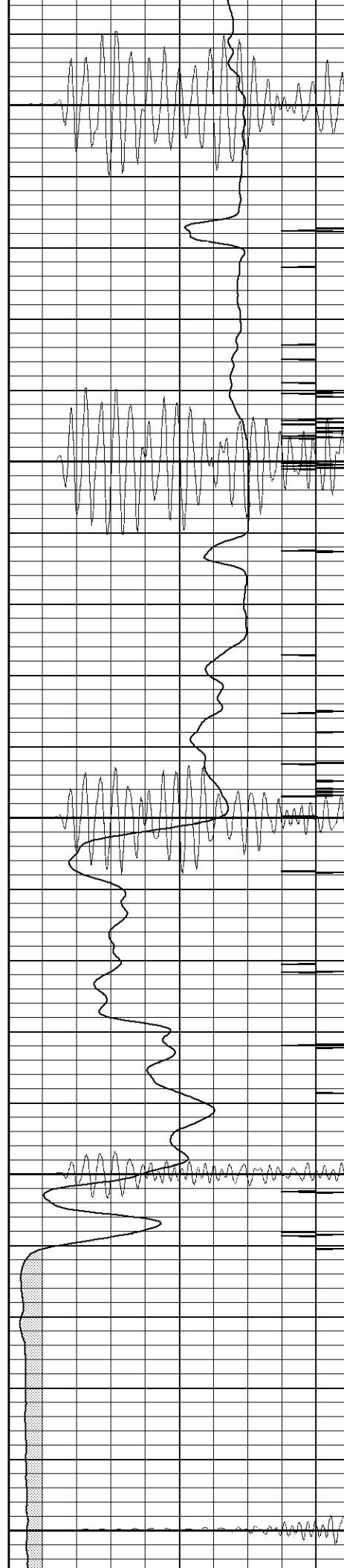
1100

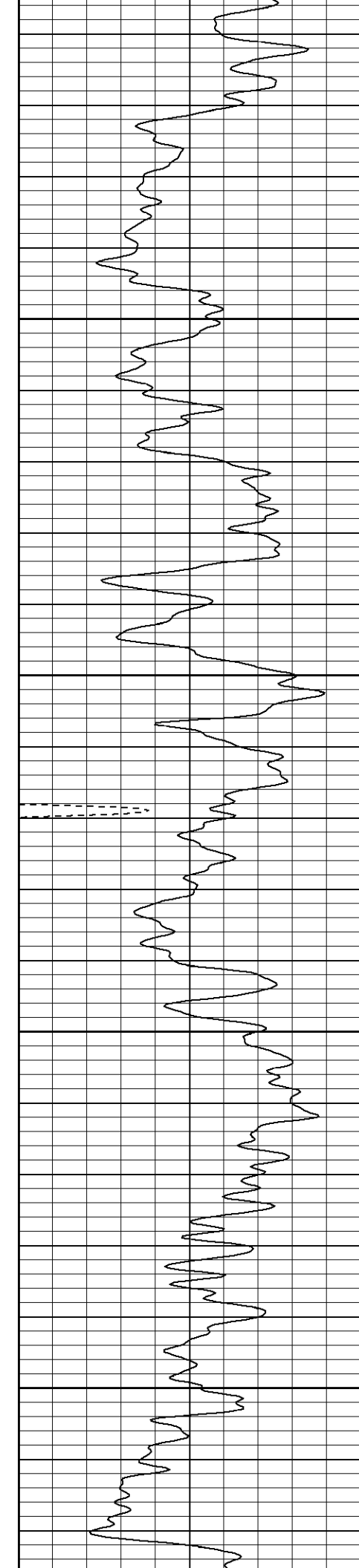
1150

1200

1250

1300



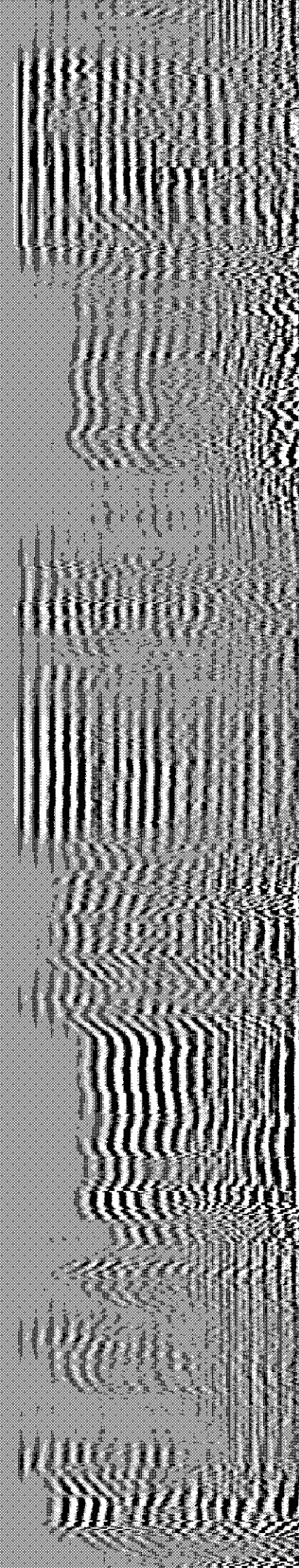


1350

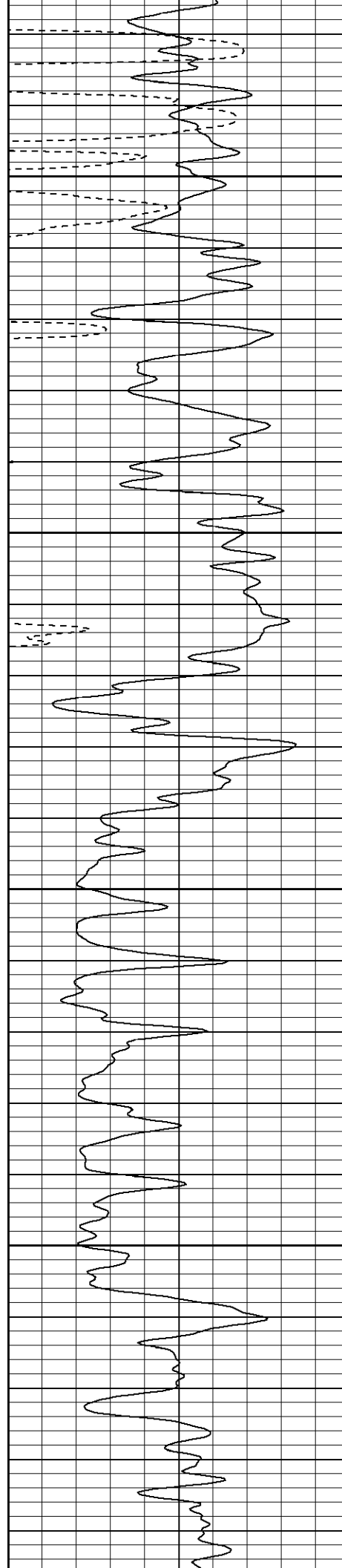
1400

1450

1500





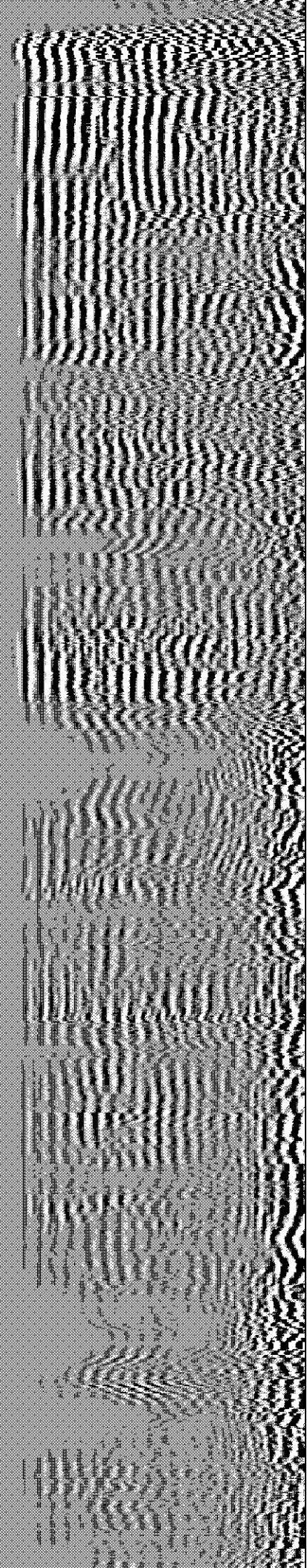
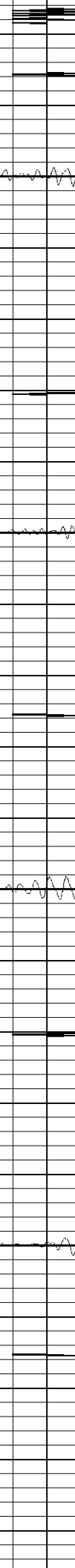
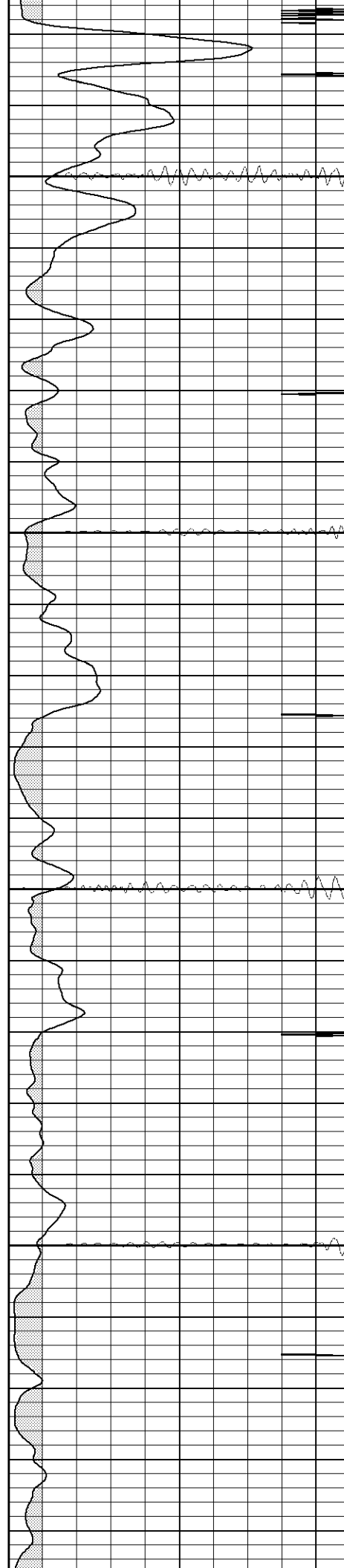


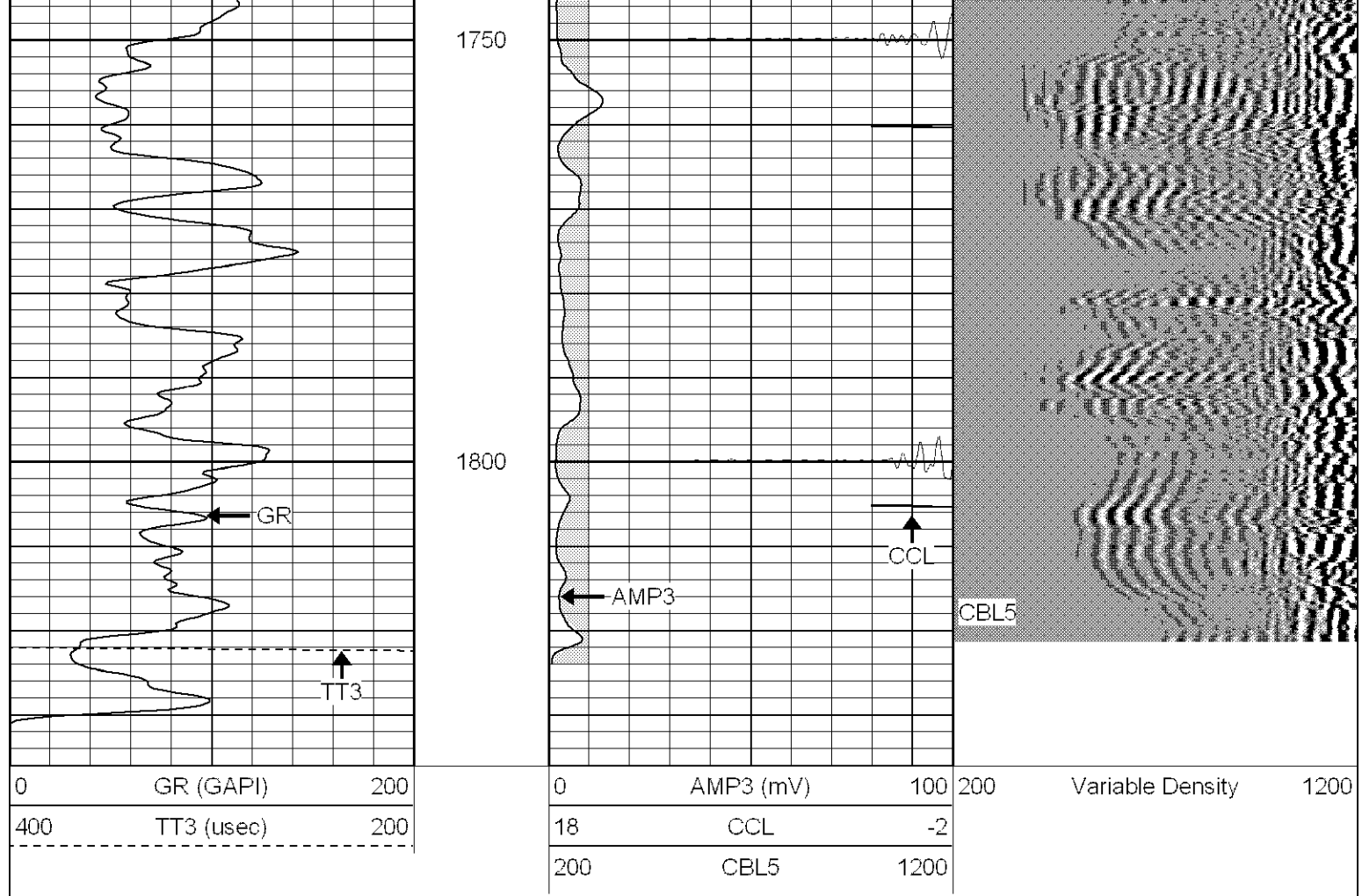
1550

1600

1650

1700



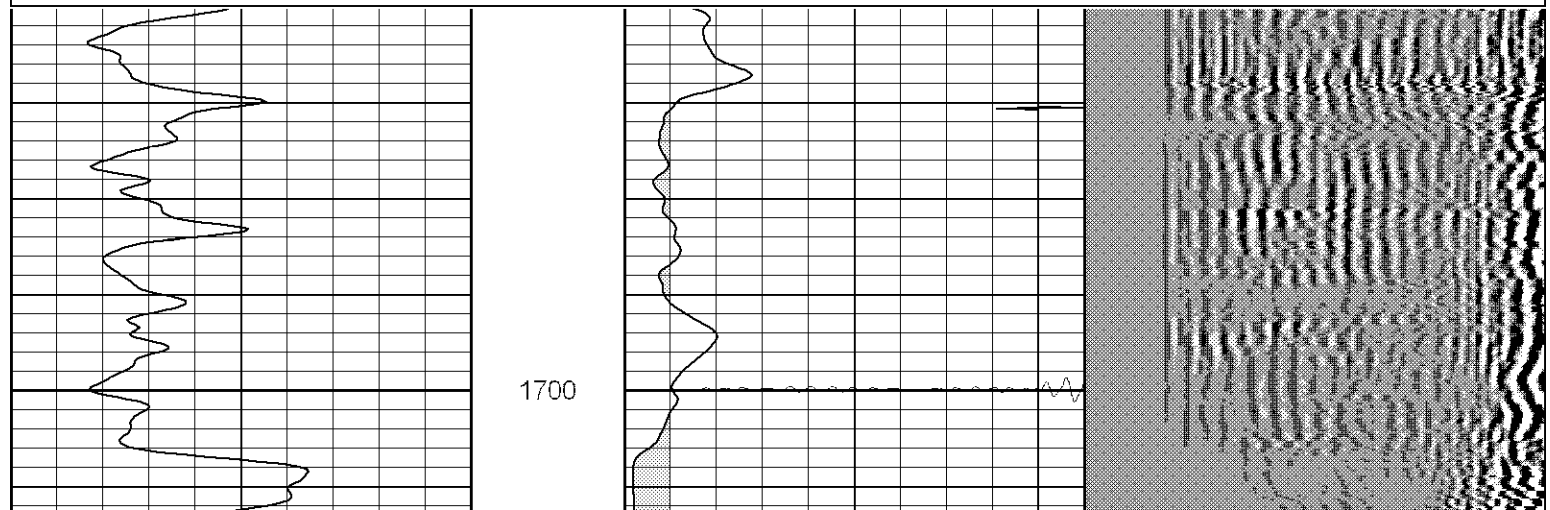
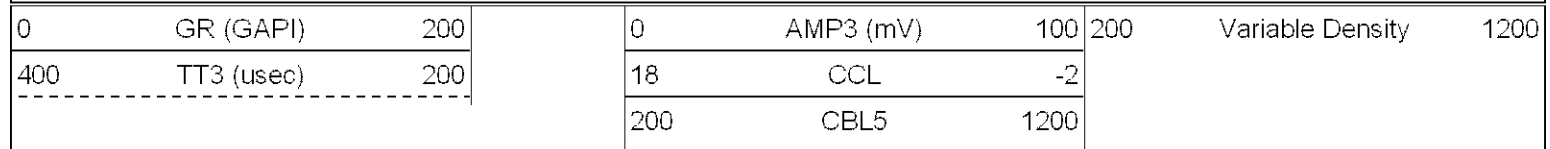


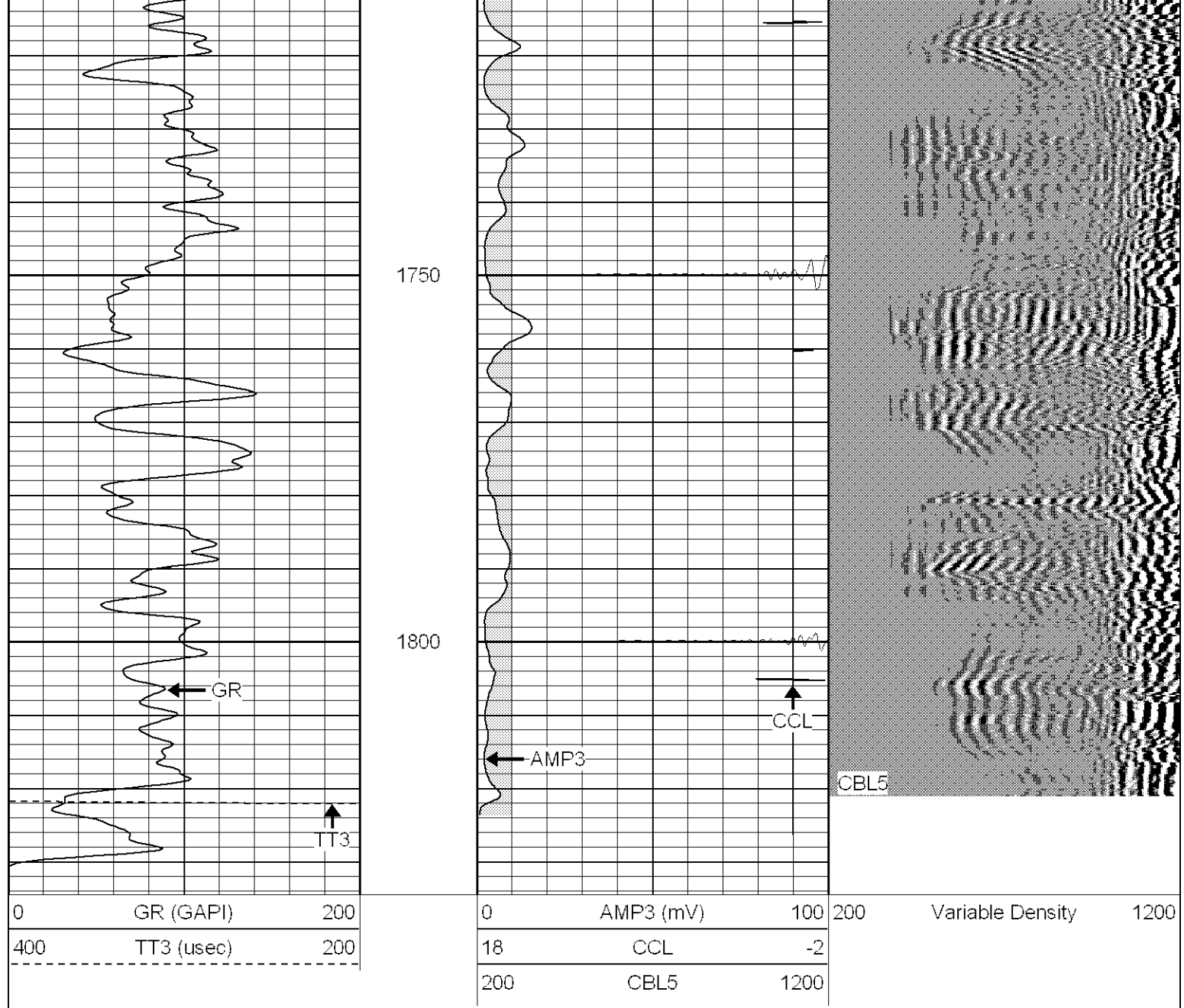
**SUPERIOR**

Black Lick, Pa.  
Mercer, Pa.  
Wooster, Oh.  
Cleveland, Ok.  
Trinidad, Co.

# Repeat Section (0PSI)

Database File: ge320861507b.db  
Dataset Pathname: pass1  
Presentation Format: cblrt  
Dataset Creation: Fri Jun 15 09:25:49 2007 by Log Open-Cased 061129  
Charted by: Depth in Feet scaled 1:240





### Calibration Report

Database File: ge320861507b.db  
 Dataset Pathname: pass1  
 Dataset Creation: Fri Jun 15 09:25:49 2007 by Log Open-Cased 061129

### Gamma Ray Calibration Report

Serial Number: Slimhole  
 Tool Model: SH  
 Performed: Sun Jun 13 13:33:21 1993

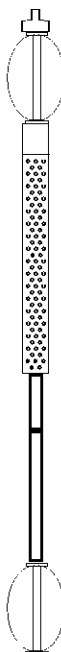
Calibrator Value: 1.0 GAPI

Background Reading: 0.0 cps  
 Calibrator Reading: 1.0 cps

Sensitivity: 1.0000 GAPI/cps

### Cement Bond Log Calibration Report

Serial Number: Titan4  
 Tool Model: T4  
 Performed: Thu Jun 07 09:33:17 2007

| Sensor       | Offset (ft)    | Schematic  | Description   | Len (ft) | OD (in) | Wt (lb) |
|--------------|----------------|--|---|----------|---------|---------|
|              |                |  | CHD-None (0)  | 0.75     | 1.50    | 5.00    |
|              |                |  | CENT-X (2)  | 3.00     | 1.69    | 25.00   |
| WVF5<br>WVF3 | 13.45<br>12.45 |  | CBL-T4 (Titan4)                                     | 8.15     | 2.25    | 110.00  |
| CCL          | 7.99           |  | CCL-TS (Slimhole)<br>1 11/16" Titan Slimhole GR/CCL | 1.83     | 1.69    | 10.00   |
| GR           | 4.43           |  | GR-SH (Slimhole)                                    | 4.28     | 1.69    | 28.00   |
|              |                |  | CENT-X (1)  | 3.00     | 1.69    | 25.00   |
|              |                | Dataset:   | ge320861507b.db: field/well/run1/pass1              |          |         |         |
|              |                | Total Length:  | 21.02 ft  |          |         |         |
|              |                | Total Weight:  | 203.00 lb   |          |         |         |
|              |                | O.D.   | 2.25 in   |          |         |         |